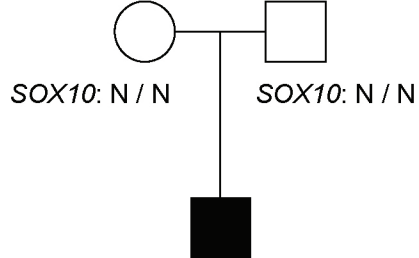


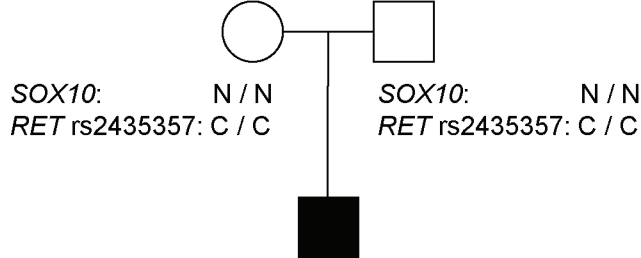
A



SOX10: **p.Met112Ile** / N  
 RET rs2435357: C / C

with Hirschsprung disease

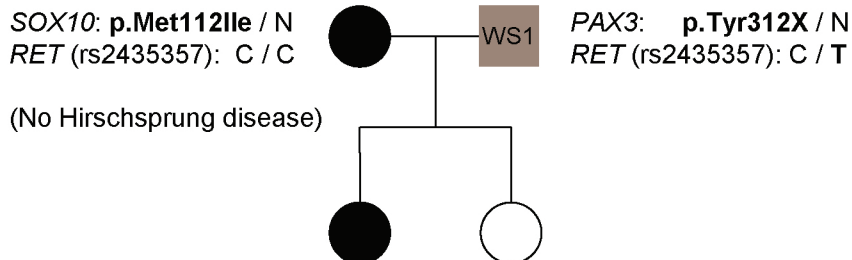
B



SOX10: **p.Met112Ile** / N  
 RET rs2435357: C / C

(No Hirschsprung disease)

C



SOX10: **p.Met112Ile** / N  
 PAX3: N / N  
 RET rs2435357: C / T

SOX10: N / N  
 PAX3: N / N  
 RET rs2435357: C / T

(No Hirschsprung disease)