



Reduced sphingosine kinase-1 and enhanced sphingosine 1-phosphate lyase expression demonstrate deregulated sphingosine 1-phosphate signaling in Alzheimer's disease.

Johnatan Ceccom, Najat Loukh, Valérie Lauwers-Cances, Christian Touriol, Yvan Nicaise, Catherine Gentil, Emmanuelle Uro-Coste, Stuart Pitson, Claude Alain Maurage, Charles Duyckaerts, et al.

► To cite this version:

Johnatan Ceccom, Najat Loukh, Valérie Lauwers-Cances, Christian Touriol, Yvan Nicaise, et al.. Reduced sphingosine kinase-1 and enhanced sphingosine 1-phosphate lyase expression demonstrate deregulated sphingosine 1-phosphate signaling in Alzheimer's disease.. *Acta Neuropathologica Communications*, 2014, 2 (1), pp.12. 10.1186/2051-5960-2-12 . inserm-00941846

HAL Id: inserm-00941846

<https://inserm.hal.science/inserm-00941846>

Submitted on 4 Feb 2014

HAL is a multi-disciplinary open access archive for the deposit and dissemination of scientific research documents, whether they are published or not. The documents may come from teaching and research institutions in France or abroad, or from public or private research centers.

L'archive ouverte pluridisciplinaire **HAL**, est destinée au dépôt et à la diffusion de documents scientifiques de niveau recherche, publiés ou non, émanant des établissements d'enseignement et de recherche français ou étrangers, des laboratoires publics ou privés.

RESEARCH

Open Access

Reduced sphingosine kinase-1 and enhanced sphingosine 1-phosphate lyase expression demonstrate deregulated sphingosine 1-phosphate signaling in Alzheimer's disease

Johnatan Ceccom^{1,2}, Najat Loukh¹, Valérie Lauwers-Cances⁵, Christian Touriol⁶, Yvan Nicaise¹, Catherine Gentil⁵, Emmanuelle Uro-Coste^{1,6}, Stuart Pitson⁷, Claude Alain Maurage^{8,9,10}, Charles Duyckaerts¹¹, Olivier Cuvillier^{3,4†} and Marie-Bernadette Delisle^{1,6*†}

Abstract

Background: The accumulation of beta amyloid (A β) peptides, a hallmark of Alzheimer's disease (AD) is related to mechanisms leading to neurodegeneration. Among its pleiotropic cellular effects, A β accumulation has been associated with a deregulation of sphingolipid metabolism. Sphingosine 1-phosphate (S1P) derived from sphingosine is emerging as a critical lipid mediator regulating various biological activities including cell proliferation, survival, migration, inflammation, or angiogenesis. S1P tissue level is low and kept under control through equilibrium between its synthesis mostly governed by sphingosine kinase-1 (SphK1) and its degradation by sphingosine 1-phosphate lyase (SPL). We have previously reported that A β peptides were able to decrease the activity of SphK1 in cell culture models, an effect that could be blocked by the prosurvival IGF-1/IGF-1R signaling.

Results: Herein, we report for the first time the expression of both SphK1 and SPL by immunohistochemistry in frontal and entorhinal cortices from 56 human AD brains. Immunohistochemical analysis revealed a decreased expression of SphK1 and an increased expression of SPL both correlated to amyloid deposits in the entorhinal cortex. Otherwise, analysis of brain tissue extracts showed a decrease of SphK1 expression in AD brains whereas SPL expression was increased. The content of IGF-1R, an activator of SphK1, was found decreased in AD brains as well as S1P₁, the major receptor for S1P.

Conclusions: Collectively, these results highlight the importance of S1P in AD suggesting the existence of a global deregulation of S1P signaling in this disease from its synthesis by SphK1 and degradation by SPL to its signaling by the S1P₁ receptor.

Keywords: Alzheimer's disease, Sphingolipids, Beta amyloid, Sphingosine kinase-1, Sphingosine 1-phosphate lyase, Neuropathology

* Correspondence: delisle.b@chu-toulouse.fr

†Equal contributors

¹CHU Toulouse, Service d'Anatomie Pathologique, 31059 Toulouse, France

⁶Inserm, UMR 1037, 31432 Toulouse, France

Full list of author information is available at the end of the article

Background

Alzheimer's disease (AD) is a devastating neurodegenerative disorder which is characterized by two principal features: i) intracellular accumulation of hyperphosphorylated tau protein constituting neurofibrillary tangles (NFT) and neuropil threads; and ii) extracellular accumulation of β -amyloid ($A\beta$) peptide, major component of diffuse, focal and stellate deposits – the focal deposit constituting the core of the senile plaques [1]. These lesions are likely implicated in neuronal death and synaptic dysfunction associated with cerebral atrophy and cognitive impairment, characteristics of AD [2]. According to the stage of the disease, they can be confined to a specific location (i.e. entorhinal cortex, hippocampus) or be widely distributed in the brain [3-5]. Even if definite causes are not clearly identified, several molecular mechanisms have been involved in the pathogenesis of AD: mutations of APP or of presenilins, epsilon 4 allele of ApoE, excessive $A\beta$ production and/or

reduced removal, tau protein abnormalities, oxidative stress and lipid metabolism alteration [6-9].

Sphingolipids are ubiquitous lipid components of membranes that are metabolized to form signaling molecules associated with cellular processes important for health and disease [10,11] (Figure 1). One of the most important of these metabolites is sphingosine 1-phosphate (S1P), which regulates pleiotropic biological activities such as proliferation, survival, migration, inflammation, or angiogenesis [10,11]. S1P is generated from sphingosine, the backbone component of all sphingolipids and a proapoptotic sphingolipid [12] in a reaction mainly catalyzed by the sphingosine kinase isoform 1, SphK1 [13]. In turn, SphK1 can be activated by multiple stimuli as IGF-1 signaling [14]. The balance between the levels of S1P and its metabolic precursors ceramide and sphingosine has been regarded as a switch that could determine whether a cell proliferates or dies [15]. S1P can be secreted and signal as

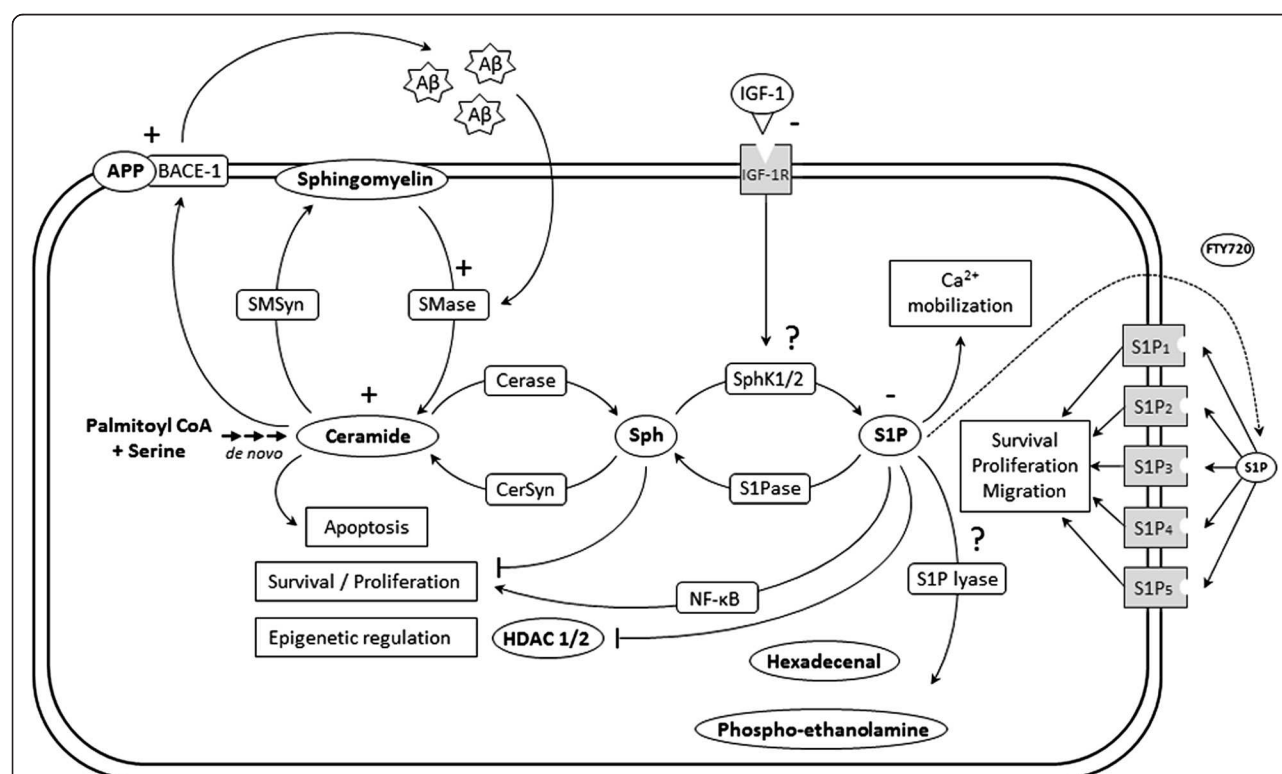


Figure 1 Schematic representation of the sphingolipid rheostat in AD context. Ceramide can be generated *de novo* or by hydrolysis of sphingomyelin by sphingomyelinase. Ceramide is subsequently metabolized by ceramidase to generate sphingosine which in turn produces sphingosine 1-phosphate through phosphorylation by sphingosine kinase-1 and sphingosine kinase-2. All these reactions are reversible. Sphingosine 1-phosphate can be catabolized into hexadecenal + phospho-ethanolamine by the action of sphingosine 1-phosphate lyase. Sphingosine 1-phosphate exerts intracellular signaling which can promote, calcium mobilization, epigenetic modulation and survival effects. S1P has also extracellular effects by signaling through 5 G protein-coupled receptors. The agonist FTY720 can bind S1P_{1,3,4,5}. IGF-1/IGF-1R signaling pathway is able to activate SphK1, inducing its translocation to the plasma membrane. In AD, $A\beta$ peptide is able to upregulate sphingomyelinase activity which consequently increases the level of ceramide. In turn, ceramide stabilizes BACE-1 which increases APP cleavage leading to generation of $A\beta$ peptide [22]. S1P level as IGF-1R level are decreased in AD [23]. SMSyn, sphingomyelin synthase; SMase, sphingomyelinase; Cerase, ceramidase; CerSyn, ceramide synthase; Sph, sphingosine; SphK1/2, sphingosine kinase 1/2; S1Pase, sphingosine 1-phosphate phosphatase.

a ligand of five high-affinity G protein-coupled receptors (GPCR), named S1P₁₋₅ [16]. These receptors differ in their tissue distribution and the specific effect of S1P is driven by the predominance of the S1P receptor subtypes expressed [16]. Intracellular functions of S1P also exist with recent studies linking S1P to epigenetic regulation, calcium mobilization or activation of NF- κ B [11,17,18]. Importantly, the agonist-induced S1P production as well as its downstream effects can be disrupted by inhibition of SphK1 gene expression or enzymatic activity illustrating that SphK1 plays a crucial role in the observed cellular effects played by S1P [19]. S1P can irreversibly be degraded into hexadecenal and ethanolamine phosphate by sphingosine 1-phosphate lyase (SPL) [20]. Interestingly, recent clinical observations have suggested an inverse relationship between SPL and SphK1 activities on the level of S1P in prostate cancer specimens implying that the overall increased S1P level commonly observed in cancer does not merely reflect overexpression of SphK1 activity, but could also be a consequence of loss of SPL expression [21].

In the brain, alteration of sphingolipid metabolism is believed to be essential for neuronal function as evidenced in a number of severe disorders besides AD including Niemann Pick disease, amyotrophic lateral sclerosis, Parkinson and AIDS dementia [24]. With regard to AD, most of the post-mortem studies have examined the level of ceramide and sphingosine, the pro-apoptotic precursors of sphingosine 1-phosphate, or enzymes responsible for their generation such as acid sphingomyelinase (which degrades sphingomyelin to ceramide) or acid ceramidase (which converts ceramide to sphingosine). For instance, acid sphingomyelinase activity and ceramide content are increased in the frontotemporal area [25-28]. A positive correlation was found between acid sphingomyelinase activity and A β or phosphorylated tau in this region, suggesting that increased ceramide levels are associated with AD pathology [24]. The involvement of sphingosine is unclear with either increased [25,29] or decreased [22,26] content in AD as compared to normal brains. On the contrary, one clinical study has reported a decrease in S1P expression in AD tissues [22]. Interestingly, this decrease of S1P level was negatively correlated with A β and phosphorylated tau protein levels [22]. Moreover, ceramide level has been reported to be increased in CSF from patients with moderate severity of AD [30] whereas low levels of plasmatic ceramide have been reported in the early stages of memory impairment [31,32]. Thus, the levels of these sphingolipids might be related to disease stage and represent an interesting pool of biomarkers for AD.

In cell culture models, a wealth of studies have firmly established the deleterious effect of ceramide on glial and neuronal cells exposed to A β peptides [26,33,34]. In addition to mediate the pro-apoptotic effect of A β , ceramide can also promote A β biogenesis by activating and

stabilizing BACE-1 [35]. Conversely, S1P protects neuronal cells from apoptosis [36] notably in response to A β peptides [33]. Moreover, SphK1/S1P signaling was found to be a major transducer of two important growth factors, IGF-I and TGF- β 1, whose neuroprotective effects against A β are well recognized [33,37-39]. With regard to the S1P receptors S1P₁₋₅ [11], their contribution to AD has not yet been investigated. However, FTY720, an agonist of S1P_{1,3,4,5}, developed as an immunomodulatory drug and currently prescribed for multiple sclerosis, is able to restore passive avoidance memory in a rat model of AD as efficiently as Memantine, a finding supporting the existence of a direct action of this drug on neurons through S1P receptors [40].

Herein, we report for the first time the expression of SphK1 and SPL, the two main enzymes controlling the level of S1P, in frontal and entorhinal cortices of brains from AD patients, and their interaction with A β deposits distribution in the cortical layers. The expression of SphK1 and SPL was also assessed by western blot on brain tissue extracts together with SphK2, the minor isoform of sphingosine kinase, and S1P₁, the most important S1P receptor and IGF-1R, whose activation promotes activation of SphK1 and production of S1P.

Methods

Human brain tissues

Human brain tissues were provided by certified French biological resource centers from Lille (DC-2008-642), Paris (DC-2009-957) and Toulouse (AC-2009-973), and by the national brain bank GIE Neuro-CEB (AC-2007-5). This study is compliant with the Helsinki Declaration and has been approved by CPP (Comité de protection des personnes du Sud-Ouest et Outre-Mer I) ethical committee (PHRC 1802, #1-09-54). Post-mortem tissues from 56 AD patients were included in the immunohistochemical study (Table 1). Once extracted, hemi-brains were fixed with formalin (4% in PBS) during approximately 1 month. Samples from frontal and entorhinal cortices were embedded in paraffin. These blocks were cut serially to obtain 4 μ M sections. The diagnosis of AD was made according to current criteria of NIA – Alzheimer's Association [41]. The assessment included Braak and Thal staging. For immunoblots, fresh samples (independent from those used for immunohistochemical study) from frontal cortex and hippocampus of 4 AD cases and 3 non demented age-matched controls were used (Table 2).

Immunohistochemistry

Paraffin-embedded, formalin-fixed sections were deparaffinized in xylene, rehydrated in graded ethanol and washed for 5 min with Tris buffer saline (pH 7.6). Antigen retrieval was performed by immersing sections in boiling EDTA buffer (pH 9.0). Endogenous peroxidase

Table 1 Characteristics of patients included in the immunohistochemistry study

Variable	AD patients (N=56)
Age at death (years)	
Median [IQR]	80.0 [72.0-87.0]
Range	56.0, 96.0
Sex – n of patients (%)	
Female	37 (66.1)
Male	19 (33.9)
Post mortem interval	
Median [IQR]	26.5 [19.0-34.0]
Range	3.0, 96.0
Missing (n)	4
Braak Stage – n of patients (%)	
IV	1 (1.8)
V-VI	55 (98.2)
Thal – n of patients (%)	
2	2 (3.57)
3	5 (8.93)
4	16 (28.57)
5	33 (58.93)

Table 2 Characteristics of patients included in the immunoblot study

Variable	Controls (N = 3)	AD patients (N = 4)
Age at death (years)		
Median [IQR]	73.0 [69.0-92.0]	73.0 [72.0-73.0]
Range	69.0-92.0	72.0, 89.0
Sex – n of patients (%)		
Female	1 (33.3)	2 (50.0)
Male	2 (66.6)	2 (50.0)
Post mortem interval		
Median [IQR]	36.5 [10.0-63.0]	56.5 [44.0-59.0]
Range	10.0-63.0	44.0, 59.0
Missing (n)	1	
Braak Stage – n of patients (%)		
0	2 (66.6)	
II	1 (33.3)	
VI		4 (100.0)
Thal – n of patients (%)		
0	3 (100.0)	
4		1 (25.0)
5		3 (75.0)

and alkaline phosphatase were blocked by incubation of the sections for 10 min in Dual Endogenous Enzyme Block (Dako, Denmark). Double staining was carried out to evaluate the expression of SphK1 and the density of amyloid deposits (n = 56). Double staining was also carried out to evaluate the expression of SPL together with the density of amyloid deposits in 10 cases randomly selected. Sections were initially incubated with primary antibody directed against amyloid beta (mouse clone 6 F/3D, 1:100, Dako) during 2 hours at room temperature (RT). Sections were washed twice during 7 minutes in Tris-buffered NaCl solution with Tween 20 (pH 7.6, Dako). Immunostaining was revealed using BrightVision poly HRP-Anti-Mouse IgG (Immunologic, Netherland) during 30 min at RT and treated with diaminobenzidine/hydrogen peroxide (DAB) for 10 minutes (DAB + Liquid, Dako). Sections were rinsed for 5 minutes in tap water and then rinsed rapidly in distilled water. After this first step, sections were washed for 10 minutes with Tris buffer saline (pH 7.6) before incubation with primary antibody directed against SphK1 (rabbit polyclonal, 1:500, [21,42]) or SPL (rabbit polyclonal #HPA023086, 1:250, Sigma Aldrich) overnight at 4°C. The sections were washed twice during 7 minutes in Tris-buffered NaCl solution with Tween 20 (pH 7.6, Dako). Immunostaining was exposed using BrightVision poly AP-Anti-Rabbit IgG (Immunologic, Netherland) during 30 minutes at RT and treated with Liquid Fast Red (Abcam) for 30 minutes. Sections were counter-stained with hematoxylin in alcohol solution. Slides were then mounted in Faramount Aqueous Mounting Medium (Dako).

Qualitative and quantitative examination

Once mounted, slides were scanned with a digital scanner NanoZoomer (HAMAMATSU, Réf: 2.0-RS: C10730-13) to obtain high resolution virtual slides. Digitalized slides were analyzed with NDP View 2.0 software (HAMAMATSU). Morphometric investigation was carried out by two observers (M. B. Delisle & J. Ceccom) to determine the numerical density of amyloid deposits and of neurons expressing SphK1 or SPL at two levels: negative or mild (+) and strong (++) among the different cortical layers. Columns constituted of contiguous microscopic fields, from the pial surface to the white matter were drawn on each slide. As the fields were examined at a magnification of x400, each field was 300 µM × 150 µM in size. As the thickness of the cortex appeared to be variable between the different sections, after the counting step, the columns were standardized to 10 fields [43]. Field 1 corresponded to the cortex immediately under the pial surface and field 10 reached the white matter (Additional file 1). In each field, the number of profiles of Aβ deposits, of neurons and of neurons expressing low level (+) and high level (++) of

SphK1 and of SPL was counted and reported on a database. For A β deposits, focal and diffuse plaques were recorded separately according to published discriminating features [1].

Preparation of human brain homogenates and Western blotting

Frozen tissue samples were pulverized with “Mikro-Dismembrator” (Sartorius, France) and resuspended in lysis SDS sample buffer (50 mM Tris-HCl pH 6.8, 5% SDS, 10% glycerol and Complete EDTA-free protease inhibitor cocktail (Roche)). Samples were sonicated at 4°C then centrifuged at $13,000 \times g$ for 10 minutes. Total protein concentration was assessed on the supernatant with the BCA Protein Assay (Interchim). Samples were prepared for electrophoresis by adding 5% β -mercaptoethanol, 0.05% bromophenol blue and heating at 98°C for 3 minutes. Sixty μ g of total proteins were loaded into each lane of a 10% polyacrylamide gel and electrophoresed at 50 V in a MiniProtean Tetra System (Bio-Rad Laboratories, Irvine, CA, USA). After migration and 10 min of transfer with the Transblot Turbo (Bio-Rad Laboratories), nitrocellulose membranes were blocked with 4% skimmed milk, and washed 3 times with Tris-buffered saline buffer containing 0.05% Tween-20 (TBST). Blots were probed with either SphK1 (rabbit polyclonal #71700, 1:1000, Abcam), SphK2 (rabbit polyclonal #37977, 1:1000, Abcam), SPL (rabbit polyclonal #HPA023086, 1:2,000, Sigma Aldrich), S1P1 (rabbit clone EPR4538(2) #NBP1-95120, 1:5,000, Novus) and IGF-1R (mouse clone 3G5C1 #MAB10693, 1:2,000, Abnova) antibodies. After an overnight incubation at 4°C, the membranes were washed with TBST, labeled with a peroxidase-conjugated anti-rabbit or anti-mouse (dilution 1:3,000) secondary antibody (Clontech) and revealed by chemiluminescence (Clarity kit, Bio Rad). The density of the band of β -actin (anti- β -actin monoclonal antibody, AC-15, Sigma-Aldrich, 1:10,000) was used to normalize the signals.

Data analysis

Statistical analysis was carried out with a multilevel linear mixed model to take into account non independent data (eight fields into two cerebral areas per subject were studied). Due to the poor representativeness of fields 1 (non tissular zone and pial surface) and 10 (proximal white matter), they were not included in statistical analysis. As a strong relationship between the number of neurons and SphK1 expression was guaranteed because of mathematical coupling (ie the number of neuron expressing SphK1 in a specific field depends on the number of neurons observed in this same field), the relation between total number of neurons and SphK1 expression was estimated using the method of Oldham [44]. Correlations were estimated as significant at $p < 0.05$. The analysis was

performed using “Stata 11.2 Statistical Software” (Stata Corporation, College Station, TX, USA).

Results

Immunohistochemical study

Most of the subjects were staged Braak V-VI and Thal 4 to 5, therefore the packing density of neurofibrillary tangles and senile plaques was high (Table 1). Cortical thickness variability was noticed and could be related to atrophy which is a common feature in AD. Morphological study showed a distribution of cortical layers over the 10 fields standardized columns which was consistent with literature [1,43]. For instance, in frontal and entorhinal cortex, cortical layer I was principally found in fields 1 and 2, cortical layers II & III were mostly represented in fields 2 to 6, layer IV was confined in fields 6 to 8, and layers V & VI was found in fields 7 to 10. The distribution of neurons over cortical layers was different as expected and did not follow the same pattern in the two studied cortical regions. Namely, in frontal cortex, the number of neurons was constant over layers II to V whereas their packing density was more fluctuant in entorhinal cortex. The distribution of A β deposits was consistent with the laminar distribution previously reported [1,43], namely a higher numerical density in cortical layers II and III (data not shown). Moreover, in our cohort, focal deposits were more represented than diffuse ones in frontal ($\beta = 1.7$; $p < 0.001$) and entorhinal ($\beta = 1.08$; $p < 0.001$) cortices, which is consistent with advanced stage of AD. SphK1/SPL staining was mainly observed in neurons (Figure 2).

Correlation between density of neurons and A β deposits

The packing density of neurons and A β deposits were uncorrelated in the frontal cortex ($\beta = 0.049$; $p = 0.67$) and inversely correlated in the entorhinal cortex ($\beta = -0.34$; $p = 0.019$). This negative correlation was only related to the presence of focal deposits ($\beta = -0.39$; $p = 0.021$) while diffuse ones were not found to impact the density of neurons ($\beta = -0.17$; $p = 0.645$). These results indicate an overall effect of A β focal deposits on neuronal density solely observable in entorhinal cortex which is consistent with morphological observations characteristics of end stage AD patients.

Correlation between A β deposits and SphK1 expression in AD brain

The packing density of neurons in which SphK1 expression was high (SphK1++) was not correlated with A β deposits density in the frontal cortex ($\beta = 0.04$; $p = 0.62$) whereas it was inversely correlated in the entorhinal cortex ($\beta = -0.77$; $p < 0.001$) (Figure 3). This negative correlation was only related to the presence of focal deposits ($\beta = -0.88$; $p < 0.001$) while diffuse ones were not found to impact the density of neurons expressing Sphk1 at high level ($\beta = -0.33$; $p = 0.218$).

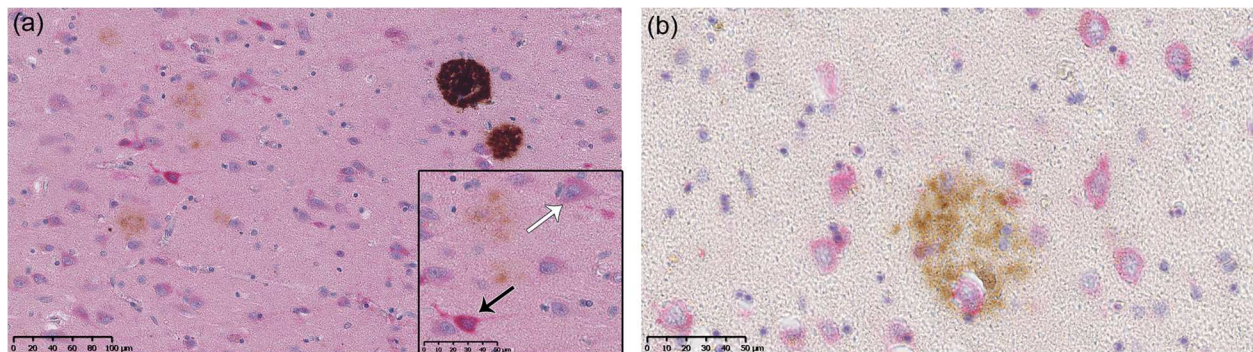


Figure 2 Immunohistochemical study of SphK1/SPL expression and A β deposits. **(a)** Double labeling of SphK1 and A β in AD brain section from entorhinal cortex. Diffuse and focal deposits are seen in different areas. X200. Inset: Strongly stained neurons (SphK1++, black arrow) and mild stained neurons (SphK1+, white arrow) are clearly distinguishable. X400 **(b)** Double labeling of SPL and A β in AD brain section from entorhinal cortex. A senile plaque is mainly surrounded by strong labeled neurons (SLP++). X400.

Correlation between A β deposits and SPL expression in AD brain

The packing density of neurons with strong expression of SPL (SPL++) and the packing density of A β deposits were not correlated in the frontal cortex ($\beta = -0.11$; $p = 0.72$) whereas a significant correlation was found in the entorhinal cortex ($\beta = 0.49$; $p = 0.014$) (Figure 4). This positive correlation was only related to the presence of focal deposits ($\beta = 0.85$; $p = 0.004$) while diffuse ones were not found to impact the density of neurons expressing SPL at high level ($\beta = -0.47$; $p = 0.43$).

Correlation between SphK1 expression and total neurons in AD brain

Statistical analysis revealed that SphK1 expression and total density of neurons were correlated in frontal cortex ($\beta = 0.54$; $p < 0.001$) and entorhinal cortex ($\beta = 0.27$; $p < 0.001$).

Immunoblot analysis

Each tissue lysate from frontal cortex and temporal cortex in the hippocampal area of AD and control brains (Table 2) was prepared to quantify the amount of SphK1 and SPL protein. In line with the immunohistochemistry analysis, there was a marked decrease in SphK1 content in AD extracts as compared to control (Figure 5). On the contrary, SPL expression was higher in AD extracts as compared to control especially in entorhinal cortex (Figure 5). We next assessed the level of SphK2, the other sphingosine kinase isoform but its expression was not different between AD and control samples (data not shown). Importantly, the expression of the S1P₁ receptor, which notably mediates cell survival in response to S1P in various cell systems and whose expression is ubiquitous, was reduced in frontal and entorhinal cortex (Figure 5). Finally, a marked decrease in IGF-R1 expression was observed in AD samples (Figure 5).

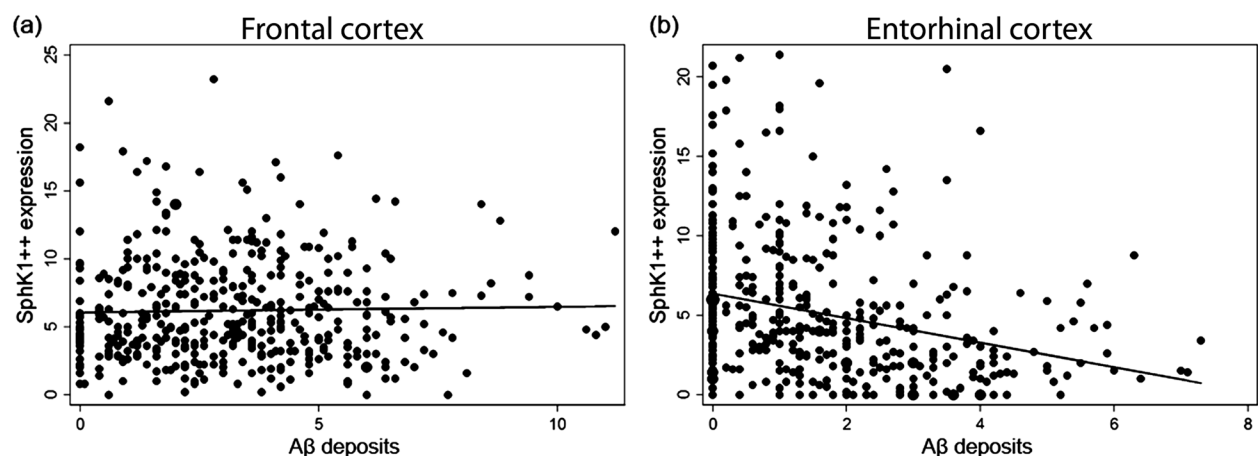
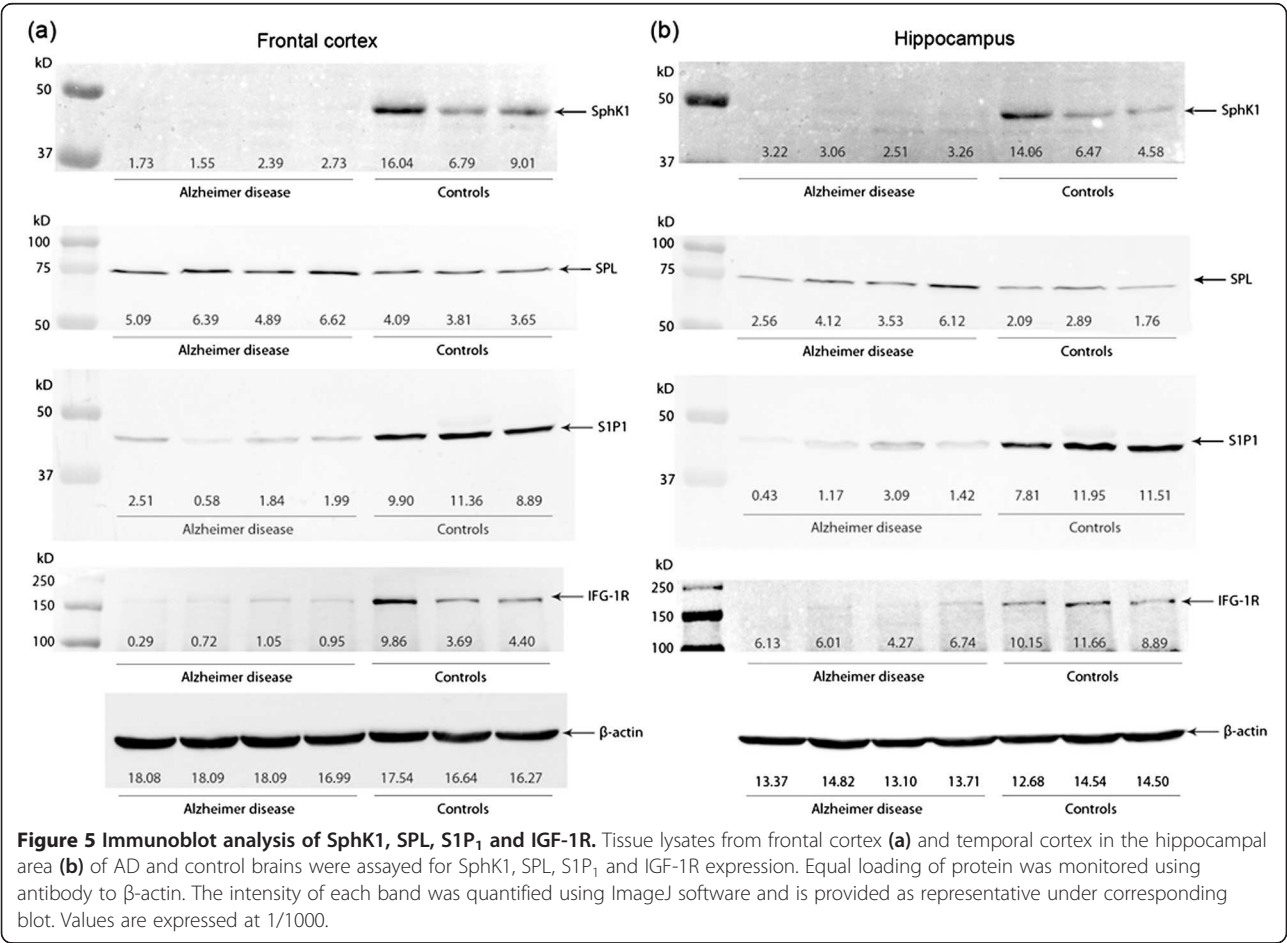
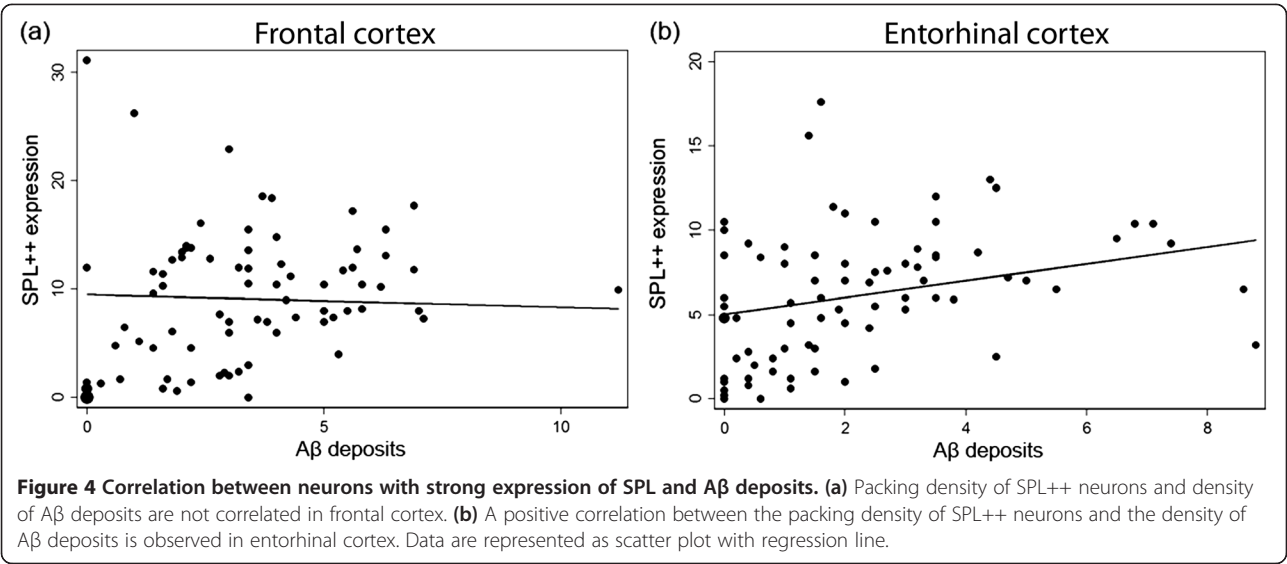


Figure 3 Correlation between neurons with strong expression of SphK1 and A β deposits. **(a)** Packing density of SphK1++ neurons and density of A β deposits are not correlated in frontal cortex. **(b)** A negative correlation between the packing density of SphK1++ neurons and the density of A β deposits is observed in entorhinal cortex. Data are represented as scatter plot with regression line.



Discussion

While cancers are associated with alterations of cellular cycle inducing anarchic proliferation, neurodegenerative diseases are on the contrary associated with a cellular deregulation leading to neuronal death. As recently shown in a cohort study, elderly people suffering from cancer have a reduced risk of AD dementia and *vice versa* [45]. This observation underlines the existence of a relationship between these two major mechanisms of cellular function impairment. Interestingly, SphK1 overexpression leading to increase S1P signaling has been demonstrated to have an important role in cancer initiation, progression and resistance to therapeutics [13], whereas high levels of ceramide have been reported in AD brains [24]. Thus, in cancer and neurodegenerative diseases like AD, two opposite cellular fate outcomes could result from the imbalance of ceramide/S1P biostat [15]. Recently, Brizuela and coworkers reported that SphK1 expression was upregulated whereas SPL expression was downregulated in prostatic cancer. This original result showed that abnormal S1P level in prostatic malignant cells was not only related to overproduction by SphK1 but also to an important impairment of the elimination pathway provided by SPL [21]. In our study we reported the opposite situation, and showed for the first time that in AD, SphK1 expression was downregulated whereas SPL expression was upregulated. As a consequence of this deregulation, S1P levels should be decreased in cells and drive them to neurodegenerative processes.

In 2010, He and coworkers provided crucial information about the levels of ceramide and S1P in AD brains and assessed the expression level of enzymes implicated in ceramide/S1P metabolism but not SphK1 nor SPL [22]. The authors showed that A β was able to interact with sphingomyelinase and could induce *in fine* a decrease of S1P level. On the other hand, *in vitro* studies showed that A β , under oligomeric or fibrillary form, could trigger ceramide mediated apoptosis [22,46]. The lack of information about SphK1 and SPL in AD and their direct involvement in S1P metabolism led us to investigate their expression within AD brains and to assess their possible relationship with A β deposits which represent one of the principal hallmarks of this disease.

Western blot analysis showed that SphK1 expression was reduced in AD brains compared to non demented controls. This observation supports the idea that neuropathologic processes related to AD and especially A β accumulation may induce deleterious effects on the expression of principal actors of the sphingosine 1-phosphate metabolism. SphK2 which is largely less implicated in the overall production of S1P than SphK1 did not show any particular modification of its expression in AD brains which is consistent with literature [47]. Morphologically, SphK1 expression was dramatically decreased within neurons populating

fields in which the density of A β deposit was the highest. These fields corresponded predominately to cortical layers II, III where neuritic plaques are preferentially found [43] and extended to layer IV. This result was significant for neurons from entorhinal cortex that are very vulnerable [48], whereas neurons from frontal cortex seemed to be more resilient to A β toxicity. However, the packing density of total neurons in frontal and entorhinal cortices was correlated with the packing density of neurons with high expression of SphK1. As SphK1 expression is related to survival effects, its downregulation in AD could induce an opposite outcome. We previously showed that SphK1 activity was also reduced when cultured cells were exposed to fibrillary A β 25-35 [33]. All these results tend to demonstrate that A β deposits are directly involved in the reduction of S1P production by modulating the expression and the activity of SphK1 and could eventually shift the death/survival balance in favor of neurodegenerative processes.

Inversely, SPL which is the final enzyme in the sphingolipid degradative pathway controls the only exit point for sphingolipid intermediates. In addition to regulating S1P levels, SPL is a gatekeeper of a critical node of lipid metabolic flow [20]. In our study, Western Blot examination of SPL expression showed a higher level of this enzyme in AD brains compared to controls. This observation suggests that SPL could be highly deregulated in AD and is consistent with literature that reported upregulation of SPL mRNA expression in AD brains correlated to progression of dementia [28]. Our immunohistological study on ten AD cases confirmed these data and provided complementary information. A β deposits packing density was not correlated with high expression of SPL within neurons from frontal cortex but was positively correlated with high expression of SPL within neurons from entorhinal cortex. Notably, SPL deficiency leads to resistance against apoptosis induced by chemotherapy or nutriment starvation [21,49]. In AD, two single nucleotide polymorphisms were detected in the *sgpl1* gene in late-onset AD, which suggests that variation in *sgpl1* expression and/or function may confer susceptibility to late-onset AD [50]. Our data indicates that increase of SPL expression in AD could be one of the consequences of A β accumulation. Hexadecenal and phospho-ethanolamine produced by SPL from S1P degradation have been reported to induce apoptosis, among other effects [51]. As suggested by Aguilar and Saba in 2012, SPL upregulation may be involved in accumulation of hexadecenal which could induce neurological and cognitive defects in some pathologies as for example in Sjögren-Larsson syndrome. This hypothesis suggests an important involvement of SPL deregulation in the pathogenesis of AD and leads to consider this enzyme as a promising therapeutic target.

SphK1 activation is modulated by many agonists including IGF-1 which induces the translocation of SphK1

to the plasma membrane [52]. In a previous study, we showed that the deleterious effect of A β exposition on SphK1 activity could be reversed by adjunction of IGF-1 to the culture medium [33]. Here we show that IGF-1R expression is dramatically reduced in frontal and hippocampal regions of AD cases compared to controls. This result is consistent with literature [23] and introduces a possible candidate for mediating signaling between A β and SphK1. Post-mortem studies on AD brains showed that IGF-1 deficiency and resistance is related to the stage of the disease and then could be considered as causal in the pathogenesis of AD [23]. IGF-1R impairments lead to brain amyloidosis in rodents and IGF-1R confers to cells the ability to reduce exogenously applied oligomers [53,54]. This suggests that IGF-1R disorders are involved in A β accumulation and subsequent synaptic loss [55]. Here, we face a vicious circle in which A β induces a deregulation of IGF-1 signaling that in turn leads to overproduction of A β .

As S1P is able to trigger intracellular signaling pathways, it is also involved in an extracellular autocrine/paracrine signaling through five S1P receptors. Now well described, these receptors are involved in a wide range of signaling pathways including proliferation, survival, migration and cell-cell interactions [16]. Here we focused on S1P₁ as it is the most represented in brain and its activation can lead to an increase of survival/prevention of apoptosis through PI3K and Akt signaling [56]. The important decrease of S1P₁ expression in AD cases reported in our study could be related to a deregulation of S1P extracellular signaling induced by A β accumulation. This hypothesis is consistent with recent study which showed that FTY720, an agonist of S1P receptors with high affinity for S1P₁ was able to reverse behavioral impairment in rat model of AD [40].

Conclusion

In conclusion, our data extend previous *in vitro* findings regarding the effect of A β deposits on sphingolipid rheostat and show for the first time the decreased expression of SphK1 in AD brains. They provide the first evidence of increased expression of SPL related to amyloid deposits in a human neurodegenerative disease. Taken together, these original data reveal an imbalance in SphK1/SPL system which might play a crucial role in neurodegenerative disease. As cells are very sensitive to variations of S1P levels, the assessment of such variations in AD or early stages of memory impairment could be a promising prognostic tool as a biomarker in fluids.

Consent

Written informed consent was obtained from the patient for the publication of this report and any accompanying images as required in the concerned authorized biological resource centers.

Additional file

Additional file 1: Virtual slides and counting method. (a) Virtual slide obtained from hippocampal area section. The section is double labeled for SphK1 and A β . (b) Representative scale matrix designed on entorhinal cortex used for neurons and A β deposits counting. Boxes extend from pial surface to white matter.

Competing interests

The authors declare that they have no competing interests.

Authors' contributions

NL and YN carried out double labeling immunoassays and immunoblot experiments and participated in drafting the manuscript. CG and VLC performed statistical analysis and data interpretation. VLC participated in the conception of the study. CT carried out immunoblot experiment, analyzed data and participated in the conception of the study and drafting of the manuscript. SP provided SphK1 antibody and participated in drafting the manuscript. CAM, CD and EUC provided biological material and associated data for staging, participated in drafting and reviewing the manuscript. CD participated in the conception of the methodology used in the study. JC, MBD and OC conceptualized the design of the study, analyzed and interpreted data, and wrote the manuscript. JC managed the conduct of experiments. All authors read and approved the final manuscript.

Acknowledgements

This work was supported by a grant from the Clinical Research Hospital Program from the French Ministry of Health (PHRC 2010, n° 18_02) and the Fondation Plan Alzheimer. The authors would like to thank Sabrina Leclerc-Turbant and Marie-Claire Artaud-Botté from the GiE Neuro-CEB, Pr Anne Gomez-Brouchet, Dr Virginie Lavielle-Guilloteau, Pr Norbert Telmon and Pr Bruno Vellas and their team for their advices and assistance. Virtual slides were performed with scanning equipment from CMEAB.

Author details

¹CHU Toulouse, Service d'Anatomie Pathologique, 31059 Toulouse, France. ²Université de Toulouse III, Faculté de Médecine Rangueil, 31062 Toulouse, France. ³CNRS, Institut de Pharmacologie et de Biologie Structurale, Toulouse, France. ⁴Université de Toulouse, UPS, IPBS, Toulouse, France. ⁵Service d'épidémiologie, CHU Toulouse, 31059 Toulouse, France. ⁶Inserm, UMR 1037, 31432 Toulouse, France. ⁷Centre for Cancer Biology, SA Pathology, Frome Road, Adelaide, SA 5000, Australia. ⁸Inserm, UMR 837, 59045 Lille, France. ⁹CHU Lille, Service de Pathologie, 59037 Lille, France. ¹⁰Université Lille Nord de France, 59000 Lille, France. ¹¹Laboratoire de Neuropathologie et Centre de Recherche de l'ICM, Hôpital de la Salpêtrière, 75013 Paris, France.

Received: 9 January 2014 Accepted: 18 January 2014

Published: 27 January 2014

References

- Duyckaerts C, Delatour B, Potier MC: Classification and basic pathology of Alzheimer disease. *Acta Neuropathol* 2009, **118**:5–36.
- Nelson PT, Alafuzoff I, Bigio EH, et al: Correlation of Alzheimer disease neuropathologic changes with cognitive status: a review of the literature. *J Neuropathol Exp Neurol* 2012, **71**:362–381.
- Braak H, Alafuzoff I, Arzberger T, Kretschmar H, Del Tredici K: Staging of Alzheimer disease-associated neurofibrillary pathology using paraffin sections and immunocytochemistry. *Acta Neuropathol* 2006, **112**:389–404.
- Braak H, Braak E: Neuropathological staging of Alzheimer-related changes. *Acta Neuropathol* 1991, **82**:239–259.
- Thal DR, Rub U, Orantes M, Braak H: Phases of A beta-deposition in the human brain and its relevance for the development of AD. *Neurology* 2002, **58**:1791–1800.
- Farooqui AA, Horrocks LA, Farooqui T: Interactions between neural membrane glycerophospholipid and sphingolipid mediators: a recipe for neural cell survival or suicide. *J Neurosci Res* 2007, **85**:1834–1850.
- Hartmann T, Kuchenbecker J, Grimm MO: Alzheimer's disease: the lipid connection. *J Neurochem* 2007, **103**(Suppl 1):159–170.

8. Marquer C, Devaues V, Cossec JC: **Local cholesterol increase triggers amyloid precursor protein-Bace1 clustering in lipid rafts and rapid endocytosis.** *FASEB J* 2011, **25**:1295–1305.
9. Yankner BA, Lu T, Loerch P: **The aging brain.** *Annu Rev Pathol* 2008, **3**:41–66.
10. Hannun YA, Obeid LM: **Principles of bioactive lipid signalling: lessons from sphingolipids.** *Nat Rev Mol Cell Biol* 2008, **9**:139–150.
11. Spiegel S, Milstien S: **Sphingosine-1-phosphate: an enigmatic signalling lipid.** *Nat Rev Mol Cell Biol* 2003, **4**:397–407.
12. Cuvillier O: **Sphingosine in apoptosis signaling.** *Biochim Biophys Acta* 2002, **1585**:153–162.
13. Pitson SM: **Regulation of sphingosine kinase and sphingolipid signaling.** *Trends Biochem Sci* 2011, **36**:97–107.
14. Spiegel S, Cuvillier O, Edsall LC: **Sphingosine-1-phosphate in cell growth and cell death.** *Ann N Y Acad Sci* 1998, **845**:11–18.
15. Cuvillier O, Prianov G, Kleuser B: **Suppression of ceramide-mediated programmed cell death by sphingosine-1-phosphate.** *Nature* 1996, **381**:800–803.
16. Rosen H, Gonzalez-Cabrera PJ, Sanna MG, Brown S: **Sphingosine 1-phosphate receptor signaling.** *Annu Rev Biochem* 2009, **78**:743–768.
17. Alvarez SE, Harikumar KB, Hait NC, et al: **Sphingosine-1-phosphate is a missing cofactor for the E3 ubiquitin ligase TRAF2.** *Nature* 2010, **465**:1084–1088.
18. Hait NC, Allegood J, Maceyka M: **Regulation of histone acetylation in the nucleus by sphingosine-1-phosphate.** *Science* 2009, **325**:1254–1257.
19. Cuvillier O: **Downregulating sphingosine kinase-1 for cancer therapy.** *Expert Opin Ther Targets* 2008, **12**:1009–1020.
20. Aguilar A, Saba JD: **Truth and consequences of sphingosine-1-phosphate lyase.** *Adv Biol Regul* 2012, **52**:17–30.
21. Brizuela L, Ader I, Mazerolles C, Bocquet M, Malavaud B, Cuvillier O: **First evidence of sphingosine 1-phosphate lyase protein expression and activity downregulation in human neoplasm: implication for resistance to therapeutics in prostate cancer.** *Mol Cancer Ther* 2012, **11**:1841–1851.
22. He X, Huang Y, Li B, Gong CX, Schuchman EH: **Deregulation of sphingolipid metabolism in Alzheimer's disease.** *Neurobiol Aging* 2010, **31**:398–408.
23. Rivera EJ, Goldin A, Fulmer N, Tavares R, Wands JR, de la Monte SM: **Insulin and insulin-like growth factor expression and function deteriorate with progression of Alzheimer's disease: link to brain reductions in acetylcholine.** *J Alzheimers Dis* 2005, **8**:247–268.
24. Mielke MM, Lyketsos CG: **Alterations of the sphingolipid pathway in Alzheimer's disease: new biomarkers and treatment targets?** *Neuromolecular Med* 2010, **12**:331–340.
25. Bandaru VV, Troncoso J, Det W: **ApoE4 disrupts sterol and sphingolipid metabolism in Alzheimer's but not normal brain.** *Neurobiol Aging* 2009, **30**:591–599.
26. Cutler RG, Kelly J, Storie K: **Involvement of oxidative stress-induced abnormalities in ceramide and cholesterol metabolism in brain aging and Alzheimer's disease.** *Proc Natl Acad Sci USA* 2004, **101**:2070–2075.
27. Han X, MH D, McKeel DW Jr, Kelley J, Morris JC: **Substantial sulfatide deficiency and ceramide elevation in very early Alzheimer's disease: potential role in disease pathogenesis.** *J Neurochem* 2002, **82**:809–818.
28. Katsel P, Li C, Haroutunian V: **Gene expression alterations in the sphingolipid metabolism pathways during progression of dementia and Alzheimer's disease: a shift toward ceramide accumulation at the earliest recognizable stages of Alzheimer's disease?** *Neurochem Res* 2007, **32**:845–856.
29. Pettegrew JW, Panchalingam K, Hamilton RL, McClure RJ: **Brain membrane phospholipid alterations in Alzheimer's disease.** *Neurochem Res* 2001, **26**:771–782.
30. Sato H, Tomimoto H, Ohtani R, et al: **Astroglial expression of ceramide in Alzheimer's disease brains: a role during neuronal apoptosis.** *Neuroscience* 2005, **130**:657–666.
31. Mielke MM, Bandaru WR, Haughey NJ, Rabins PV, Lyketsos CG, Carlson MC: **Serum sphingomyelins and ceramides are early predictors of memory impairment.** *Neurobiol Aging* 2010, **31**:17–24.
32. Mielke MM, Haughey NJ, Bandaru VVR, et al: **Plasma ceramides are altered in mild cognitive impairment and predict cognitive decline and hippocampal volume loss.** *Alzheimers & Dementia* 2010, **6**:378–385.
33. Gomez-Bouchet A, Pchejetski D, Let B: **Critical role for sphingosine kinase-1 in regulating survival of neuroblastoma cells exposed to amyloid-beta peptide.** *Mol Pharmacol* 2007, **72**:341–349.
34. Lee JT, Xu J, Lee JM, et al: **Amyloid-beta peptide induces oligodendrocyte death by activating the neutral sphingomyelinase-ceramide pathway.** *J Cell Biol* 2004, **164**:123–131.
35. Puglielli L, Ellis BC, Saunders AJ, Kovacs DM: **Ceramide stabilizes beta-site amyloid precursor protein-cleaving enzyme 1 and promotes amyloid beta-peptide biogenesis.** *J Biol Chem* 2003, **278**:19777–19783.
36. Edsall LC, Cuvillier O, Twitty S, Spiegel S, Milstien S: **Sphingosine kinase expression regulates apoptosis and caspase activation in PC12 cells.** *J Neurochem* 2001, **76**:1573–1584.
37. Carro E, Torres-Aleman I: **The role of insulin and insulin-like growth factor I in the molecular and cellular mechanisms underlying the pathology of Alzheimer's disease.** *Eur J Pharmacol* 2004, **490**:127–133.
38. Flanders KC, Ren RF, Lippa CF: **Transforming growth factor-betas in neurodegenerative disease.** *Prog Neurobiol* 1998, **54**:71–85.
39. Tesseur I, Zou K, Esposito L, et al: **Deficiency in neuronal TGF-beta signaling promotes neurodegeneration and Alzheimer's pathology.** *J Clin Invest* 2006, **116**:3060–3069.
40. Hemmati F, Dargahi L, Nasoohi S, et al: **Neurorestorative effect of FTY720 in a rat model of Alzheimer's disease: comparison with memantine.** *Behav Brain Res* 2013, **252C**:415–421.
41. Montine TJ, Phelps CH, Beach TG, et al: **National Institute on Aging-Alzheimer's Association guidelines for the neuropathologic assessment of Alzheimer's disease: a practical approach.** *Acta Neuropathol* 2012, **123**:1–11. doi:10.1007/s00401-011-0910-3.
42. Pitson SM, Moretti PA, Zebol JR, et al: **Activation of sphingosine kinase 1 by ERK1/2-mediated phosphorylation.** *EMBO J* 2003, **22**:5491–5500.
43. Duyckaerts C, Hauw JJ, Bastenaire F: **Laminar distribution of neocortical senile plaques in senile dementia of the Alzheimer type.** *Acta Neuropathol* 1986, **70**:249–256.
44. Tu YK, Gilthorpe MS: **Revisiting the relation between change and initial value: a review and evaluation.** *Stat Med* 2007, **26**:443–457. doi:10.1002/sim.2538.
45. Musicco M, Adorni F, Di Santo S, et al: **Inverse occurrence of cancer and Alzheimer disease: a population-based incidence study.** *Neurology* 2013, **81**:322–328.
46. Malaplate-Armand C, Florent-Bechard S, Youssef I, et al: **Soluble oligomers of amyloid-beta peptide induce neuronal apoptosis by activating a cPLA2-dependent sphingomyelinase-ceramide pathway.** *Neurobiol Dis* 2006, **23**:178–189.
47. Takasugi N, Sasaki T, Suzuki K, et al: **BACE1 activity is modulated by cell-associated sphingosine-1-phosphate.** *J Neurosci* 2011, **31**:6850–6857.
48. Gomez-Isla T, Price JL, McKeel DW Jr, Morris JC, Growdon JH, Hyman BT: **Profound loss of layer II entorhinal cortex neurons occurs in very mild Alzheimer's disease.** *J Neurosci* 1996, **16**:4491–4500.
49. Colie S, Codogno P, Levade T, Andrieu-Abadie N: **Regulation of cell death by sphingosine 1-phosphate lyase.** *Autophagy* 2010, **6**:426–427.
50. Morgan AR, Turic D, Jehu L, et al: **Association studies of 23 positional/functional candidate genes on chromosome 10 in late-onset Alzheimer's disease.** *Am J Med Genet B Neuropsych Genet* 2007, **144B**:762–770.
51. Kumar A, Byun HS, Bittman R, Saba JD: **The sphingolipid degradation product trans-2-hexadecenal induces cytoskeletal reorganization and apoptosis in a JNK-dependent manner.** *Cell Signal* 2011, **23**:1144–1152.
52. Alvarez SE, Milstien S, Spiegel S: **Autocrine and paracrine roles of sphingosine-1-phosphate.** *Trends Endocrinol Metab* 2007, **18**:300–307.
53. Carro E, Trejo JL, Gerber A: **Therapeutic actions of insulin-like growth factor I on APP/PS2 mice with severe brain amyloidosis.** *Neurobiol Aging* 2006, **27**:1250–1257.
54. Carro E, Trejo JL, Spuch C, Bohl D, Heard JM, Torres-Aleman I: **Blockade of the insulin-like growth factor I receptor in the choroid plexus originates Alzheimer's-like neuropathology in rodents: new cues into the human disease?** *Neurobiol Aging* 2006, **27**:1618–1631.
55. Zhao WQ, Lacor PN, Chen H, et al: **Insulin receptor dysfunction impairs cellular clearance of neurotoxic oligomeric Aβ.** *J Biol Chem* 2009, **284**:18742–18753.
56. Brinkmann V: **Sphingosine 1-phosphate receptors in health and disease: mechanistic insights from gene deletion studies and reverse pharmacology.** *Pharmacol Ther* 2007, **115**:84–105.

doi:10.1186/2051-5960-2-12

Cite this article as: Ceccom et al.: Reduced sphingosine kinase-1 and enhanced sphingosine 1-phosphate lyase expression demonstrate deregulated sphingosine 1-phosphate signaling in Alzheimer's disease. *Acta Neuropathologica Communications* 2014 **2**:12.