



HAL
open science

Assessment of cardiac time intervals using high temporal resolution real-time spiral phase contrast with UNFOLD-SENSE

Grzegorz Kowalik, Daniel Knight, Jennifer Steeden, Oliver Tann, Freddy Odille, David Atkinson, Andrew Taylor, Vivek Muthurangu

► To cite this version:

Grzegorz Kowalik, Daniel Knight, Jennifer Steeden, Oliver Tann, Freddy Odille, et al.. Assessment of cardiac time intervals using high temporal resolution real-time spiral phase contrast with UNFOLD-SENSE. *Journal of Cardiovascular Magnetic Resonance*, 2014, 16 (Suppl 1), pp.W15. inserm-00932144

HAL Id: inserm-00932144

<https://inserm.hal.science/inserm-00932144>

Submitted on 16 Jan 2014

HAL is a multi-disciplinary open access archive for the deposit and dissemination of scientific research documents, whether they are published or not. The documents may come from teaching and research institutions in France or abroad, or from public or private research centers.

L'archive ouverte pluridisciplinaire **HAL**, est destinée au dépôt et à la diffusion de documents scientifiques de niveau recherche, publiés ou non, émanant des établissements d'enseignement et de recherche français ou étrangers, des laboratoires publics ou privés.

WORKSHOP PRESENTATION

Open Access

Assessment of cardiac time intervals using high temporal resolution real-time spiral phase contrast with UNFOLD-SENSE

Grzegorz T Kowalik^{1*}, Daniel S Knight^{1,2}, Jennifer A Steeden¹, Oliver Tann^{1,3}, Freddy Odille^{4,5}, David Atkinson⁶, Andrew Taylor^{1,3}, Vivek Muthurangu^{1,3}

From 17th Annual SCMR Scientific Sessions
New Orleans, LA, USA. 16-19 January 2014

Background

Cardiac time intervals (CTI) provide information about systolic and diastolic function and can be measured using mitral valve (MV) and LV outflow tract (LVOT) Doppler velocity curves. Velocity curves produced by gated phase-contrast (PC) MR are not suitable for measurement of CTI due to distortion secondary to averaging across multiple heartbeats. Therefore, we developed a novel real-time spiral UNFOLD-SENSE PCMR sequence with high temporal resolution necessary to measure CTI. The purpose of this study was to i) validate CTI measurement against Doppler and; ii) assess CTI during exercise.

Methods

All subjects were imaged using uniform density spiral PCMR real-time sequence (voxel: 3.5×3.5 mm, TR/TE: 7.41/1.97 ms, 10 interleaves for fully sampled k-space, $B_0 = 1.5T$). A novel interleaved acquisition was implemented to allow a combination of UNFOLD with SENSE. UNFOLD filtering (-3dB cut-off frequency at ≈ 25 Hz) was performed on blocks of 20 frames with each frame containing a single alternating interleave ($R = 10$). After UNFOLD the effective acceleration was 5x. As the pair of interleaves acquired in each block was different (i.e. block 1: interleaves 1 & 6, block 2: interleaves 2 & 7), combining 5 adjacent blocks produced a fully sampled k-space used to create coils sensitivity maps. Thus, SENSE reconstruction was performed on groups of 100 frames. The resultant sequence had a temporal resolution ≈ 14.8 ms. 15 healthy volunteers

were recruited for the validation study and underwent Doppler echo and both our real-time PCMR sequence and a conventional high temporal resolution (≈ 10 ms) gated PCMR. Ten volunteers were recruited for the exercise study, in which subjects were imaged prone to facilitate the alternating weighted knee flexion exercise. Mean-velocity data at the MV and LVOT were extracted and used to calculate ejection time, isovolumic contraction time, isovolumic relaxation time (Figure 1).

Results

The protocol was successfully performed in all volunteers and the reconstruction produced good quality images (Figure 1) that allowed subsequent measurement of CTI. There was good agreement for all CTI between UNFOLD-SENSE data and Doppler. However, there was poor agreement between gated PCMR and Doppler. The exercise study showed a mean increase in heart rate of $\approx 30\%$. All CTI were significantly lower ($P < 0.05$) during exercise (Table 1).

Conclusions

We have shown that using a novel real-time PCMR sequence it is possible to accurately quantify CTI. Importantly, it significantly outperforms gated PCMR, as there is no averaging of the velocity curves across multiple heartbeats. Furthermore, we have shown that it is possible to measure the change in CTI in response to exercise with MR.

Funding

GK funded by Siemens Medical Systems, DK funded by British Heart Foundation, JAS funded by British Heart Foundation, AT funded by the National Institute for

¹Institute of Cardiovascular Science, UCL Centre for Cardiovascular Imaging, London, UK

Full list of author information is available at the end of the article

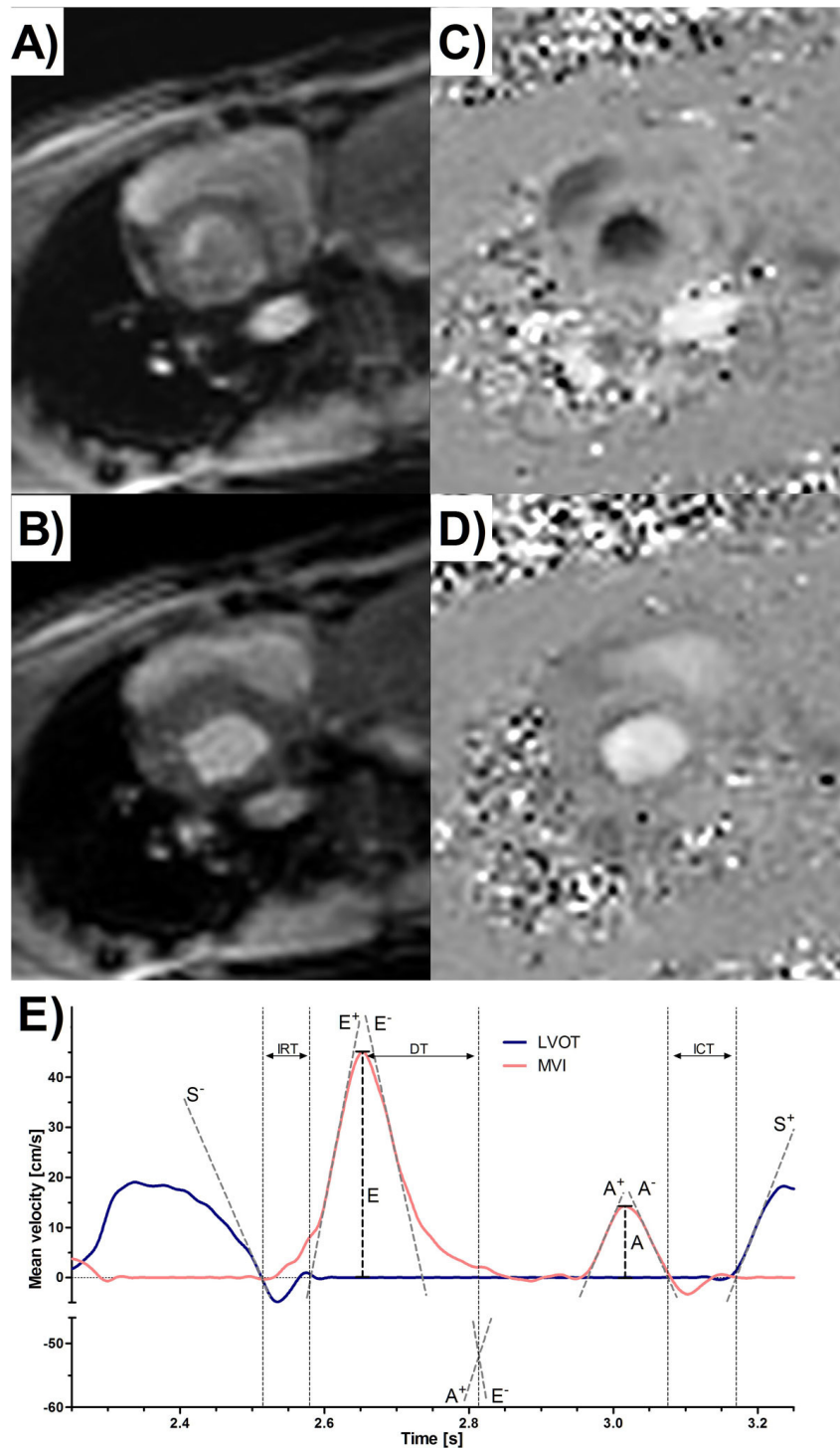


Figure 1 Example of magnitude (A, B) and phase (C, D) images reconstructed with the new reconstruction and for data acquired at systole (A, C) and diastole (B, D) periods for the same subject. E) Plot of left ventricular outflow tract (LVOT) and mitral valve inflow (MVI) velocity curves. The start and end of the S, E and A waves are delineated by the horizontal axis intercepts of tangent lines drawn on the ascending (+ superscript) and descending (- superscript) slopes of the respective waves. These are then used to calculate: IRT - isovolumic relaxation time, ICT - isovolumic contraction time and ET - ejectiontime as shown.

Table 1 Combined validation (Bland-Altman and correlation analyses) and exercise (mean \pm standard deviation and P values of paired two-tailed t-test) results.

		ICT	IRT	ET
Echo		46.4 \pm 12.6	73.8 \pm 14.7	301.1 \pm 21.4
Gated		39.6 \pm 12.3	56.7 \pm 12.5	310.3 \pm 20.9
UNFOLD-SENSE	Mean [ms]	45.0 \pm 11.6	74.1 \pm 9.3	306.0 \pm 19.0
	Bias [ms]	-1.4 \pm 5.6	0.3 \pm 9.6	4.9 \pm 11.7
	Correlation	r = 0.898	r = 0.793	r = 0.849
Rest		55.9 \pm 21.3	66.8 \pm 8.1	276.8 \pm 20.1
Stress		42.6 \pm 19.5	57.9 \pm 9.5	264.8 \pm 21.4
Paired two-tailed t-test		P = 0.0307	P = 0.0213	P = 0.0067

Health Research, VM funded by British Heart Foundation, The work was carried out with support of the GOSH/ICH NIHR Biomedical Research Centre.

Authors' details

¹Institute of Cardiovascular Science, UCL Centre for Cardiovascular Imaging, London, UK. ²Royal Free Campus, UCL Division of Medicine, London, UK. ³Cardiorespiratory Unit, Great Ormond Street Hospital for Children, London, UK. ⁴U947, INSERM, Nancy, France. ⁵Université de Lorraine, Nancy, France. ⁶Center for Medical Imaging, UCL Division of Medicine, London, UK.

Published: 16 January 2014

doi:10.1186/1532-429X-16-S1-W15

Cite this article as: Kowalik *et al.*: Assessment of cardiac time intervals using high temporal resolution real-time spiral phase contrast with UNFOLD-SENSE. *Journal of Cardiovascular Magnetic Resonance* 2014 16(Suppl 1):W15.

Submit your next manuscript to BioMed Central and take full advantage of:

- Convenient online submission
- Thorough peer review
- No space constraints or color figure charges
- Immediate publication on acceptance
- Inclusion in PubMed, CAS, Scopus and Google Scholar
- Research which is freely available for redistribution

Submit your manuscript at
www.biomedcentral.com/submit

