



HAL
open science

Myocardium T1 measurement using single and multi-shot SMART1Map acquisition: pros and cons

Pauline Ferry, Anne Menini, Glenn Slavin, Jeff Stainsby, Damien Mandry, Laurent Bonnemains, Jacques Felblinger, Marine Beaumont

► **To cite this version:**

Pauline Ferry, Anne Menini, Glenn Slavin, Jeff Stainsby, Damien Mandry, et al.. Myocardium T1 measurement using single and multi-shot SMART1Map acquisition: pros and cons. *Journal of Cardiovascular Magnetic Resonance*, 2014, 16 (Suppl 1), pp.P69. <inserm-00932143>

HAL Id: inserm-00932143

<https://inserm.hal.science/inserm-00932143v1>

Submitted on 16 Jan 2014

HAL is a multi-disciplinary open access archive for the deposit and dissemination of scientific research documents, whether they are published or not. The documents may come from teaching and research institutions in France or abroad, or from public or private research centers.

L'archive ouverte pluridisciplinaire **HAL**, est destinée au dépôt et à la diffusion de documents scientifiques de niveau recherche, publiés ou non, émanant des établissements d'enseignement et de recherche français ou étrangers, des laboratoires publics ou privés.



HAL Authorization

POSTER PRESENTATION

Open Access

Myocardium T1 measurement using single and multi-shot SMART1Map acquisition: pros and cons

Pauline Ferry^{1,2*}, Anne Menini^{1,2}, Glenn S Slavin³, Jeff A Stainsby⁴, Damien Mandry^{1,5}, Laurent Bonnemains^{1,5}, Jacques Felblinger^{1,6}, Marine Beaumont^{2,7}

From 17th Annual SCMR Scientific Sessions
New Orleans, LA, USA. 16-19 January 2014

Background

The recently published method SMART1Map[1] has proposed a new true T1 measurement technique. It consists in a 2D saturation-recovery prepared balanced-SSFP sequence which allows different acquisition schemes depending on the number of repetition (shot) used. Single-shot acquisition duration is short but cardiac motion blur can occur due to long acquisition window duration. Two-shot acquisition time allows an acquisition window twice smaller but inter acquisition window motion can occur. Note that single-shot scheme allows to acquire an additional point when magnetization has not yet undergone any saturation pulse, thus corresponding to an infinite saturation delay time (T_{∞}). In this study, we compared both schemes on healthy volunteers to determine the most appropriate strategy for a large range of T1 values measurement at 3T.

Methods

Our study was carried out in 6 volunteers on a 3T MR scanner (GE, Signa HDxt) using SMART1Map on one mid-cavity short-axis, in end-diastole, in breath-hold. Single-shot (matrix = 128*224) and two-shot (matrix = 160*224) strategies leading to 5 time points ranging from 50 ms to 2966 ms \pm 473 ms were performed. We considered three data-sets: single-shot, two-shot and two-shot plus T_{∞} from single-shot. Breath-hold duration, chance of inter and/or intra acquisition motions, and spatial resolution were assessed for the different acquisition schemes. Post-processing T_{∞} was annotated with 9900 ms for fitting. For each data-set, pixel-wise

T1 maps were generated. Data were fitted using a 3-parameter model. Due to sequence scheme, MR signal is likely to follow theoretical equation $S(t) = M_0 - M_0(1 - \cos\theta)\exp(-t/T_1)$, usually modeled as $S(t) = A - B \cdot \exp(-t/T_1)$. On each T1 map, only the septum was encompassed for analysis, to overcome susceptibility or B1 effects on the lateral wall. For each ROI, average T1 with standard deviation were assessed. Data-set's mean T1 values with standard error of the mean (n = 6) were calculated; mean T1 standard deviations were also reported.

Results

Myocardium is better defined on the two-shot plus T_{∞} data-set compared to others (Figure 1). Mean T1 value decreases when adding the T_{∞} to the two-shot data-set (Figure 2).

Conclusions

Due to its long acquisition window, single-shot might lead to blurring limiting for focal T1 assessment. With a shorter acquisition window, two-shot acquisition is potentially more reliable, particularly when heart rate increases (shorter diastole period). However it suffers from poorly sampled recovery curves leading to noisy T1 maps. Adding T_{∞} , from single-shot acquisition, to two-shot data-set allowed to stabilize fitting and resulted in better agreement with previous studies (myocardium T1 range: from 1471 \pm 31 ms[2] to 1501 \pm 69 ms[3]).

Funding

FEDER, Région Lorraine, France.

¹IADI, Lorraine University, Vandoeuvre les Nancy, France
Full list of author information is available at the end of the article

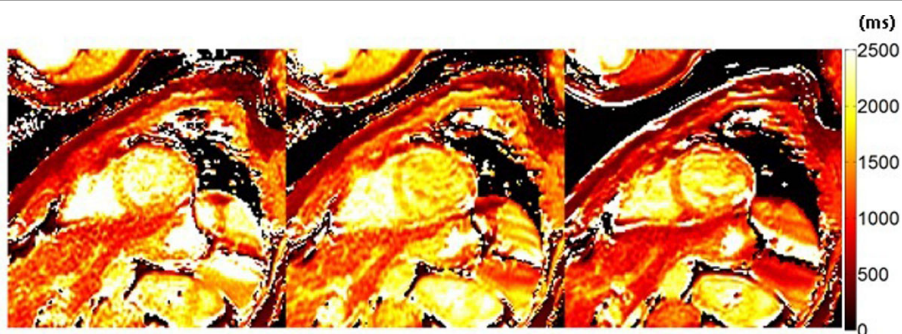


Figure 1 T1 maps. a, two-shot acquisition scheme. b, single-shot acquisition scheme. c, two-shot plus T^∞ scheme.

	Single-shot	Two-shot	Two-shot plus T^∞
Breath-hold duration	short (~12s)	long (~24s)	long
Chance of inter acquisition motion	low	high	high
Motion blur (Acquisition window duration)	high (229ms)	low (139ms)	low
Spatial resolution	low	high	high
Acquisition of fully recovered magnetization (T^∞)	yes	no	yes
Mean T1 value	1771ms \pm 27ms	1717ms \pm 68ms	1417ms \pm 21ms
Mean T1 standard deviation	236ms	378ms	199ms

Figure 2 Sequences characteristics.

Authors' details

¹IADI, Lorraine University, Vandoeuvre les Nancy, France. ²U947, Inserm, Nancy, France. ³GE Healthcare, Bethesda, Maryland, United States. ⁴GE Healthcare, Toronto, Ontario, Canada. ⁵CHU, Nancy, France. ⁶CIT 801, Inserm, Nancy, France. ⁷CIC-IT, CHU, Nancy, France.

Published: 16 January 2014

References

1. Slavin, Stainsby : *JCMR* 2012.
2. Stanisz: *MRM* 2005.
3. Fitts: *MRM* 2012.

doi:10.1186/1532-429X-16-S1-P69

Cite this article as: Ferry et al.: Myocardium T1 measurement using single and multi-shot SMART1Map acquisition: pros and cons. *Journal of Cardiovascular Magnetic Resonance* 2014 **16**(Suppl 1):P69.

Submit your next manuscript to BioMed Central and take full advantage of:

- Convenient online submission
- Thorough peer review
- No space constraints or color figure charges
- Immediate publication on acceptance
- Inclusion in PubMed, CAS, Scopus and Google Scholar
- Research which is freely available for redistribution

Submit your manuscript at
www.biomedcentral.com/submit

