



High epiregulin expression in human U87 glioma cells relies on IRE1 α and promotes autocrine growth through EGF receptor.

Gregor Auf, Arnaud Jabouille, Maylis Delugin, Sylvaine Guérit, Raphael Pineau, Sophie North, Natalia Platonova, Marlène Maitre, Alexandre Favereaux, Peter Vajkoczy, et al.

► To cite this version:

Gregor Auf, Arnaud Jabouille, Maylis Delugin, Sylvaine Guérit, Raphael Pineau, et al.. High epiregulin expression in human U87 glioma cells relies on IRE1 α and promotes autocrine growth through EGF receptor.. BMC Cancer, 2013, 13 (1), pp.597. 10.1186/1471-2407-13-597 . inserm-00922900

HAL Id: inserm-00922900

<https://inserm.hal.science/inserm-00922900>

Submitted on 31 Dec 2013

HAL is a multi-disciplinary open access archive for the deposit and dissemination of scientific research documents, whether they are published or not. The documents may come from teaching and research institutions in France or abroad, or from public or private research centers.

L'archive ouverte pluridisciplinaire **HAL**, est destinée au dépôt et à la diffusion de documents scientifiques de niveau recherche, publiés ou non, émanant des établissements d'enseignement et de recherche français ou étrangers, des laboratoires publics ou privés.

RESEARCH ARTICLE

Open Access

High epiregulin expression in human U87 glioma cells relies on IRE1 α and promotes autocrine growth through EGF receptor

Gregor Auf^{1,2,3}, Arnaud Jabouille^{1,2}, Maylis Delugin^{1,2}, Sylvaine Guérit^{1,2}, Raphael Pineau², Sophie North^{1,2}, Natalia Platonova^{1,2}, Marlène Maitre^{4,5}, Alexandre Favereaux^{4,6}, Peter Vajkoczy³, Masaharu Seno⁷, Andreas Bikfalvi^{1,2}, Dmitri Minchenko⁸, Oleksandr Minchenko^{8*} and Michel Moenner^{1,2*}

Abstract

Background: Epidermal growth factor (EGF) receptors contribute to the development of malignant glioma. Here we considered the possible implication of the EGFR ligand epiregulin (EREG) in glioma development in relation to the activity of the unfolded protein response (UPR) sensor IRE1 α . We also examined EREG status in several glioblastoma cell lines and in malignant glioma.

Methods: Expression and biological properties of EREG were analyzed in human glioma cells *in vitro* and in human tumor xenografts with regard to the presence of ErbB proteins and to the blockade of IRE1 α . Inactivation of IRE1 α was achieved by using either the dominant-negative strategy or siRNA-mediated knockdown.

Results: EREG was secreted in high amounts by U87 cells, which also expressed its cognate EGF receptor (ErbB1). A stimulatory autocrine loop mediated by EREG was evidenced by the decrease in cell proliferation using specific blocking antibodies directed against either ErbB1 (cetuximab) or EREG itself. In comparison, anti-ErbB2 antibodies (trastuzumab) had no significant effect. Inhibition of IRE1 α dramatically reduced EREG expression both in cell culture and in human xenograft tumor models. The high-expression rate of EREG in U87 cells was therefore linked to IRE1 α , although being modestly affected by chemical inducers of the endoplasmic reticulum stress. In addition, IRE1-mediated production of EREG did not depend on IRE1 RNase domain, as neither the selective dominant-negative invalidation of the RNase activity (IRE1 kinase active) nor the siRNA-mediated knockdown of XBP1 had significant effect on EREG expression. Finally, chemical inhibition of c-Jun N-terminal kinases (JNK) using the SP600125 compound reduced the ability of cells to express EREG, demonstrating a link between the growth factor production and JNK activation under the dependence of IRE1 α .

Conclusion: EREG may contribute to glioma progression under the control of IRE1 α , as exemplified here by the autocrine proliferation loop mediated in U87 cells by the growth factor through ErbB1.

Background

Malignant gliomas are highly aggressive tumors and their treatment still remains a challenging issue. The moderate efficacy of current clinical approaches underline the need for new therapeutic strategies [1]. Some of these focus on the inhibition of EGF receptors, collectively referred to as the ErbB/HER tyrosine kinase receptor family [2]. This

receptor family comprises four related members, ErbB1 to ErbB4, which are bound and activated by a set of thirteen distinct EGF-related peptide growth factors [2].

Amplification of ErbB1 and alteration of its activity are important contributors to glioma development [3,4]. For these reasons, phase II trials for high-grade gliomas have been targeting ErbB1 by using either humanized antibodies directed against the receptor extracellular domain (cetuximab, trade name Erbitux®), or pharmacological inhibitors of its protein kinase activity (erlotinib, gefinitib) [1,3,4]. The participation of the

* Correspondence: ominchenko@yahoo.com; michel.moenner@u-bordeaux1.fr

⁸Palladin Institute of Biochemistry, National Academy of Science of Ukraine, Kyiv, Ukraine

¹Inserm, LAMC, UMR 1029, Talence F-33400, France

Full list of author information is available at the end of the article

three others EGF receptors (ErbB2-ErbB4) in glioma progression by deregulation of ErbB signaling networks has also been considered [4-7].

The possible involvement of the EGF-like growth factors in glioma development was also questioned. An occasional increase of EGF, TGF- α or HB-EGF expression has been reported in malignant gliomas. Up-regulation of these growth factors may sustain autocrine loops [8-11] and contribute to tumor cell proliferation, invasion, survival and resistance to therapy [2,4].

REG is a growth regulating peptide and a member of the EGF family mainly observed in placenta and peripheral blood macrophages in normal human tissues [12]. At the molecular level, REG activates ErbB1 and ErbB4 homodimers as well as heterodimeric combinations of these two proteins and other EGF receptors [13,14]. REG binds to ErbB1 with a lower affinity than EGF while exhibiting a higher mitogenic potential. This apparent inconsistency was explained by the prolonged stimulation of its receptors [13,15]. Because of its broad binding spectrum to ErbB proteins and high biological potency, REG represents an influential activator of ErbB-dependent signaling networks in cancer. REG is up-regulated in carcinoma cell lines [12] and is associated to the progression of breast, bladder and pancreatic carcinomas [16-18]. REG is also an independent predictor of liver and lung metastasis in colorectal and bladder cancers, respectively [19,20].

To our knowledge, a single study considered REG expression in glioma [21]. Previously, we showed that inhibition of the Unfolded Protein Response (UPR) sensor IRE1 α (also named ERN1) down-regulated the expression of several pro-angiogenic growth factors in a glioma model [22]. Interestingly, the level of REG transcripts was also strongly reduced in these conditions (GEO database, accession n° GSE22385), raising the hypothesis that its expression may be related to the endoplasmic reticulum (ER) physiology. Since REG contributes to the angiogenesis process as well as to tumor metastasis in breast carcinoma models [23], we further considered its possible relationship to IRE1 α and to glioma development and analyzed its status in several glioblastoma cell lines and in malignant glioma.

Methods

Reagents

Culture media were from Invitrogen (Cergy-Pontoise, France). Antibodies against ErbB1 were purchased from BD Biosciences (San Diego, USA). Anti-ErbB2 and anti-phospho-JNK (Thr183/Tyr185) were from Cell Signaling (Saint-Quentin-en-Yvelines, France). Anti-phospho-Tyr1173-ErbB1 was from Millipore (Molsheim, France). Anti- β -actin and anti-JNK antibodies were from Santa Cruz Biotechnology (Santa Cruz, USA). Recombinant REG, monoclonal

and polyclonal antibodies against REG and control mouse monoclonal (isotype IgG₁) antibodies were from R&D Systems (Minneapolis, USA). Secondary goat-anti-mouse antibodies coupled to biotin or to peroxidase were from DAKO (Trappes, France). Humanized anti-ErbB1 (Erbbitux®, cetuximab) and anti-ErbB2 (Herceptin®, trastuzumab) antibodies were kindly provided by Merck Serono (Darmstadt, Germany) and by Roche (Mannheim, Germany), respectively. Primers are indicated in Additional file 1.

Cloning

The dominant-negative IRE1 RNase mutant (IRE1 Δ 899; GenBank accession number JQ425696) was obtained by truncation of the carboxy-terminal 78 amino acids of IRE1 α . The mutant was obtained by inserting a gatc motif at position 2812 of the BglII restriction site ²⁷⁹⁹tctgtcagagatc "gatc" tcctccgagccatgagaaataa²⁸³³. The frameshift insertion generates a stop codon 19 bases later. The wild type IRE1 α amino acids sequence at positions 896–907 is –SVRDLLRAMRNK– and the C-terminal sequence of the mutant is –SVDRSPPSHEK–COO[–]. The final sequence was controlled by DNA sequencing and was cloned in a pcDNA3 plasmid before transfection in U87wt cells and selection at 800 μ g/ml G418.

Cell culture

U87-MG (U87wt) cells were from ATCC (HTB-14). SF126 and SF188 cells were kindly provided by Dr. M. Czabanka (Charité Universitätsmedizin, Berlin). Cells were grown at 37°C, 10% CO₂ in DMEM, 4.5 g/l glucose supplemented with 10% FBS, L-glutamine and antibiotics. Empty plasmid U87 (U87Ctrl) cells, U87 IRE1dn (U87dn) cells [22] and U87 IRE1 Δ 899 (U87 Δ 899) cells were grown in the presence of 500 μ g/ml G418 and were used at passages 8–13 after transfection. The immortalized human astrocyte NHA/TS cell line and its tumorigenic NHA/TSR counterpart were kindly provided by Drs K. Sasai and S. Tanaka and were grown as reported [24].

Proliferation and migration assays

Proliferation assay was performed in 96-well plates with DMEM containing 1% FCS and 30 ng/ml REG. Serial propagation of cells in the absence of serum was developed as previously reported [25]. Briefly, cells were plated at 10 000 cells/cm² in fibronectin-precoated 24-well plates. The serum-free complete medium consisted of a 1 to 1 mixture of DME/F12 medium, 1 mg/ml fatty acid free BSA, 50 μ g/ml high-density lipoproteins, 5 μ g/ml transferrin, 5 μ g/ml insulin with or without 10 ng/ml REG. The medium was renewed every 3 days and cells were passaged after 9 days of culture. Cells were counted by using a cell counter (Coultronics, Margency, France). The transwell migration assays was performed as described previously [22]. Results were analyzed after

counting of at least 15 fields of $150\ \mu\text{m}^2$ each per condition and by three independent investigators.

Immunoblot analysis

Subconfluent cells were lysed at 4°C with 100 mM Tris-HCl pH 7.5, 150 mM NaCl, 1 mM EDTA, 1 mM Na_3VO_4 , 5 mM NaF, protease inhibitors (P8340; Sigma), SDS 1%. The cytosolic fraction was obtained by centrifugation for 2 min at 7000 rpm. After migration on SDS-PAGE, proteins were transferred to a nitrocellulose membrane and probed using antibodies against phospho- and total ErbB proteins, phospho- and total JNK proteins, β -actin or α -tubulin. Primary antibodies were revealed with a secondary HRP-antibody and detected by ELS Western blotting detection reagents (Amersham), or with a secondary antibody coupled to IRDye 800CW using the Odyssey infrared imaging system (Li-Cor Biosciences, Nebraska, US).

ELISA against EREG

Conditioned media were obtained after a 16 h-incubation of cells in serum-free medium containing 1 mg/ml BSA. Proteins were precipitated in the presence of 80% ammonium sulfate, solubilized and dialyzed against PBS. A sandwich-type ELISA was developed for detection of human EREG using 3 $\mu\text{g}/\text{ml}$ goat polyclonal antibodies for coating on 96-well plates and a mouse monoclonal anti-EREG (1 $\mu\text{g}/\text{ml}$) as the second antibody. Presence of EREG was indirectly measured using goat anti-mouse antibodies coupled to biotin and revelation was carried out using streptavidin peroxidase and the TMB substrate. Standard curves were obtained using recombinant hEREG and assays were performed in duplicate or triplicate. Measures were obtained with a SPECTRAMax spectrophotometer and calculations were developed from linear curves ($r > 0.98$).

Gene expression analysis

Total RNAs extraction, real-time quantitative PCR (qPCR) and PCR analyses were carried out as previously described [22] using HPRT1, S16, α -tubulin and β -actin as reference genes. Experiments were performed in triplicate or tetraplicate from two or three independent cell cultures or from chicken and mouse tissues as indicated below. XBP1 splicing was monitored as reported before [22].

Small interfering RNA knockdown experiments

U87 cells were plated at a density of 10^5 cells per well in six-well plates. Small interfering RNA (siRNA) against human IRE1 α (5'-GCGUCUUUACUACGUAAUCU-3') was from Eurofins MWG Operon (Ebersberg, Germany). ON-TARGETplus siRNA against XBP-1 (GCUCUUUCCUUAUGUAUAC) and non-targeting siRNA (#D-001810-01-20) were from Dharmacon (Lafayette, CO). Transfection

was performed for 48 h using lipofectamine RNAiMAX (Invitrogen) in accordance with the manufacturer's protocol, with siRNA at a final concentration of 100 nM.

Xenograft models

The Chorio-allantoic membrane (CAM) assay was developed as previously described [22]. At day 4 after implantation, tumors were excised from the CAM and pooled ($n = 5$ for each condition) before RNA extraction using Trizol reagent. Intracranial implantation was performed as follows: U87, SF126, SF188, NHA/TS and NHATSR cells were orthotopically implanted in 8–9 weeks of age RAG2/ γ_c immunodeficient mice [22]. Cells (2.5×10^5 cells, 3 μl) were implanted in the striatum of the left cerebral hemisphere, 0.1 mm posterior to bregma, 2.2 mm lateral and 3 mm in depth. For Kaplan–Meier survival analyses, 18 mice were implanted with U87Ctrl cells and half of them were treated by subcutaneous injection of 400 μg Erbitux® three times a week from day 4 to day 32 post-implantation. *In vivo* experiments were performed at the animal facility Université Bordeaux 1 (agreement n° B33-522-2) according to ethical criteria approved by the Ministère de l'Enseignement Supérieur et de la Recherche (MESR).

Laser-capture microdissection

Tumors were xenografted in mice as described above. Brains were recovered at different times and frozen at -80°C . Tissue sections (30 μm) were obtained at -20°C using a CM3050 S microtome (Leica) and were mounted on PEN-membrane 1 mm glass slides (P.A.L.M. Microlaser Technologies AG, Bernried, Germany) that had been pretreated to inactivate RNase. Frozen sections were fixed by incubation for 1 min in pre-cooled (-20°C) 80% ethanol and stained with H&E for 30 s. Sections were then rinsed with RNase-free water for 30 s, dehydrated in a series of pre-cooled ethanol baths (30 s in 50%, 70% and 1 min in 100%) and air-dried. Immediately after dehydration, LCM was performed using a PALM MicroBeam microdissection system version 4.0-1206 equipped with a P.A.L.M. RoboSoftware (P.A.L.M. Microlaser Technologies AG, Bernried, Germany). Microdissection was performed at 5X or 20X magnification. Total volumes of tumor tissues captured on one single cap were in the 0.8- to 8.7 $\times 10^6\ \mu\text{m}^3$ range and random areas were chosen within tumors. RNA samples with a RNA-Integrity Number (RIN) above 8 were kept for qPCR analyses after NanoDrop and Agilent validation. Three tumors were analyzed for each condition and qPCR were carried out in triplicates. Primers specifically recognized cognate human sequences and did not significantly cross-react with any mouse sequences as determined both in total mouse brain tissues and mouse brain sections obtained by LCM. Control qPCR were also performed from tumor tissues after omitting the reverse

transcriptase step, giving no detectable signals after 40 complete run cycles.

Results

REG expression in U87 glioma cells

Expression of REG and HB-EGF, two members of the EGF family, was analyzed in U87 cells in culture conditions. Using transcriptome analysis, we observed that the two transcripts were abundant both in wild type U87 (U87wt) cells and in cells transfected with the empty vector (U87Ctrl cells), whereas ~100-fold (REG) and 8-fold (HB-EGF) decreases were monitored in cells expressing an IRE1α dominant-negative protein (U87dn cells) (Figure 1a). Similar results were obtained by qPCR in independent cell cultures as well as in U87wt

cells transfected with small interfering RNAs targeting IRE1α (si.IRE1α) (Figure 1a). Thus, both dominant-negative and siRNA knockdown approaches led to a significant decrease in REG mRNAs in cells under-expressing IRE1α. As positive controls, SPARC and THBS1 genes were upregulated to different extents. Consistent values were obtained at the protein level by using an ELISA against REG (Figure 1b). U87Ctrl cells released ~270 pg of diffusible REG per million cells daily, whereas REG immunoreactivity was undetectable in U87dn cell-conditioned media (< 20 pg per million cells per day).

Presence of REG and HB-EGF mRNAs in U87 cells was also monitored in human tumor xenografts using the chicken chorio-allantoic membrane (CAM) and the

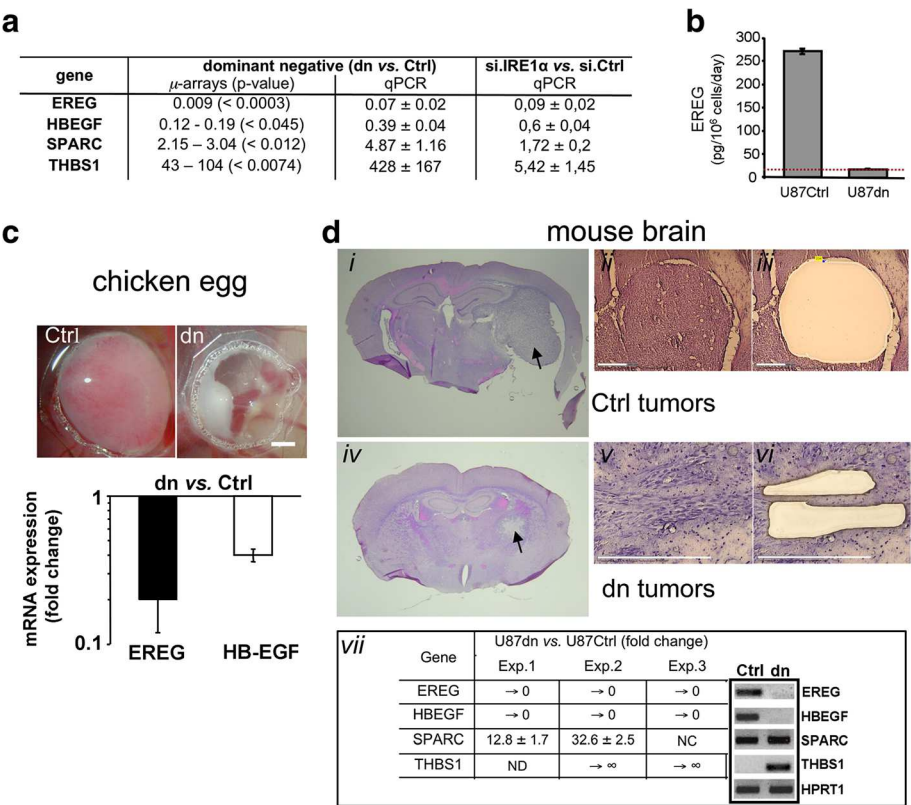


Figure 1 Expression analyses of REG and HB-EGF in IRE1α-deficient cells. Analyses were performed using either the dominant-negative strategy (U87dn vs. U87Ctrl cells) or the siRNA IRE1α knockdown methodology. **(a)** Fold-increase in gene expression was examined from microarray data (GEO, #GSE22385) and by qPCR. For knockdown analysis, IRE1α siRNA-transfected U87wt cells were compared to nontargeting siRNA-treated cells (si.Ctrl). SPARC and THBS1 mRNA levels were given for comparison. qPCR mean values were ± SD. **(b)** REG protein levels in cell-conditioned media as determined by ELISA. Results are mean values ± SD. The dotted line represents the limit of detection of the measure. **(c)** The chicken egg model. Cells were deposited onto the chicken CAM and tumors were allowed to grow for 4 days. Upper panel: microphotographs of U87Ctrl- and U87dn-derived tumors at day 4. Bar = 2 mm. Lower panel: variation of REG and HB-EGF transcripts levels in U87dn vs. U87Ctrl tumors as measured by qPCR. Data are mean values of five pooled tumors ± SD. **(d)** Mouse model. Cells were intracranially implanted into the left frontal lobe and tumors were collected at d28 (U87Ctrl) and at d43 (U87dn) post-implantation. Brain sections were stained with H&E (i, iv). Aspect of tumors before (ii, v) and after (iii, vi) LCM (Bars = 300 μm). Tumor areas were dissected inside the tumor core in control animals (ii, iii) and multiple tumor cell bundles were collected in infiltrative dn tumors (v, vi). Gene expression analyses (vii) were carried out by qPCR using HPRT1 as reference. Results are fold-increase ± SD of triplicates in three independent experiments (Exp. 1–3). NC, no change; → 0, No Ct value obtained with U87dn tumors; → ∞, value > 3 000; ND, value could not be determined. Visualization of amplicons after 40 cycles of qPCR (panel vii, right).

mouse brain models. U87Ctrl and U87dn cells were implanted onto the CAM and tumors were grown for 4 days. Under these conditions, U87dn-tumors were small and merely avascular, compared to massive and angiogenic U87Ctrl-tumors (Figure 1c, upper panel) [22]. Tumors were then excised and total mRNA was extracted for qPCR analysis. EREG and HB-EGF mRNAs were present in smaller amounts (~5- and ~2.5-fold decreases, respectively) in U87dn-derived tumors as compared to U87Ctrl tumors (Figure 1c, lower panel). These transcripts were also quantified in the orthotopic glioma implantation model in mice using LCM coupled to qPCR analysis (Figure 1d). In these conditions, EREG and HB-EGF mRNAs were readily detected in U87Ctrl-derived tumors but not in U87dn-derived tumors (Figure 1d, panel vii). Thus, mRNA production of these growth factors occurred in an IRE1 α -dependent manner in U87 glioma cells.

EREG induced glioma cell proliferation and migration

The effect of EREG on U87 cells was examined in cell cultures at low serum concentration. U87dn cells incubated

for three days in the presence of EREG underwent notable scattering, which was not observed with U87Ctrl cells (Figure 2a). Such an effect has already been described using HeLa epithelial cells [15]. In addition to its morphological effect, EREG induced proliferation and migration of the two cell variants, these effects being more important in U87dn cells (Figure 2b). These results suggest the presence of functional ErbB proteins on the membrane of U87 cells.

Transcript and protein expression levels of ErbB1-4 were analyzed comparatively and quantitatively in the two cell types. EREG was reported to bind preferentially to ErbB1 and ErbB4, whereas ErbB2 does not bind any known ligand but contributes as a co-receptor to signal transduction [13,14]. Transcriptomic and qPCR analyses indicated that the respective amounts of ErbB1, ErbB3 and ErbB4 mRNAs are similar in the two U87 cell variants (Figure 2c), the level of ErbB3 transcript being almost undetectable. Besides, the amount of ErbB2 mRNA increased by ~1.5- to 4-fold in U87dn cells vs. U87Ctrl cells. Only ErbB1 and ErbB2 proteins were detected by

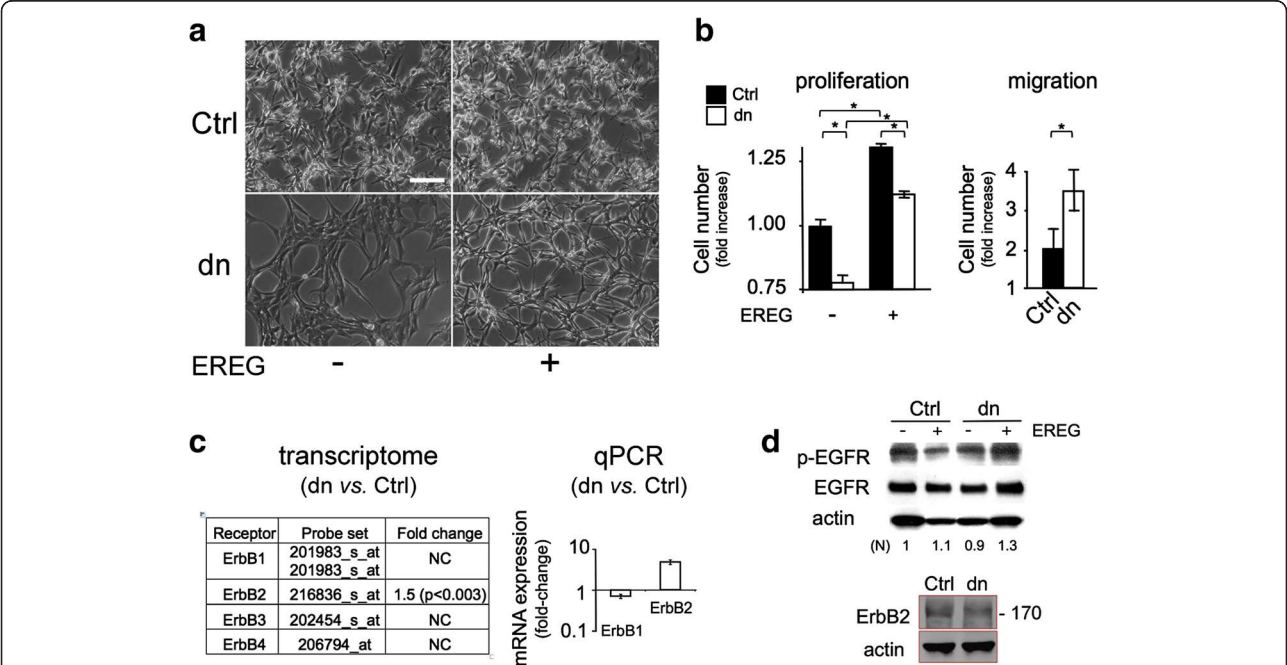


Figure 2 Differential effects of EREG on morphology, growth and migration of U87Ctrl and U87dn cells. (a) Morphological changes are selectively induced by EREG on U87dn cells. Cells were grown in the presence of 1% FCS with or without 30 ng/ml EREG. Photomicrographs of U87Ctrl and U87dn cells are shown after 3 days in culture. Bar = 50 μ m. (b) Effects of EREG on U87 cell proliferation and migration. In the proliferation assay, cells were grown for four days. The total cell number was reported as fold-increase of the standard value (1.00) obtained with U87Ctrl cells in the absence of EREG. Results are the mean of triplicates \pm SD. Mann-Whitney was performed for significance (*; $p < 0.05$). In the Transwell migration assay, cells were deposited in the migration chamber for 15 h and were then allowed to migrate for 9 h in the absence of serum, with or without EREG. Results were expressed as fold increase \pm SD of the number of migrating cells in the presence vs. absence of EREG (*; $p < 0.05$). (c) EGF receptors are expressed in U87Ctrl and U87dn cells. Differential expression of ErbB1-4 mRNAs in U87dn versus U87Ctrl cells as depicted by transcriptomic (GEO, GSE22385; AffyID probe set numbers are indicated) and qPCR analyses. (d) Presence of EGFR (ErbB1) and ErbB2 proteins in U87Ctrl and U87dn cells. For EGFR detection, cells were pre-incubated for 3 h in the absence of serum and were then stimulated or not with 30 ng/ml EREG for 20 min. Immunoblotting was performed using antibodies against EGFR, phospho-Tyr1173-EGFR (p-EGFR), ErbB2 or β -actin. Signal intensities of p-EGFR bands were quantified and normalized (N) to β -actin. The 1.0 value is used as the reference.

Table 1 Erbitux inhibits EREG-mediated proliferation of U87 cells

	No antibody	Erbitux [®] (anti-ErbB1)	Herceptin [®] (anti-ErbB2)
U87Ctrl	130.1±4.4	98.3±8.6(*)	125.6±7.9 (ns)
U87dn	144.3±3.3	104.3±3.9(*)	131.6±8.8 (ns)

Cells were plated at 7,500 cells/cm² in 96-well culture dishes and were grown in the presence of 1% FCS in the presence or absence of EREG (30 ng/ml), Erbitux[®] (200 µg/ml; cetuximab) and Herceptin[®] (830 µg/ml; trastuzumab). Cells were counted in triplicate after four days of culture. EREG-induced cell proliferation was presented as mean percentage ± SD of the total cell number measured in the absence of EREG (100% reference value). Mann-Whitney was performed for significance: Erbitux[®] vs. no antibody (*; $p \leq 0.05$); Herceptin[®] vs. no antibody (ns, not significant; $p > 0.05$).

immunoblotting (Figure 2d; data not shown), which is consistent with results reported by others in this cell model [6,26]. Finally, treatment of U87Ctrl and U87dn cells with EREG stimulated phosphorylation of the EGFR (ErbB1) protein at Tyr-1173 residue (~10% and ~40% increases in the two cell variants, respectively).

Next, we investigated the respective contribution of ErbB1 and ErbB2 to cell proliferation promoted by EREG. Cells were incubated in the presence of EREG under low-serum conditions, with or without inhibitory antibodies directed against either ErbB1 (Erbitux[®]) or ErbB2 (Herceptin[®]). As shown in Table 1, Erbitux[®] almost completely abrogated EREG-induced cell proliferation of U87Ctrl and U87dn cells, whereas Herceptin[®] had no significant effect. Thus, the effect of EREG on U87 cell proliferation was mediated mainly through ErbB1.

In order to validate the existence of an EREG autocrine loop, a serial propagation of U87 cells was performed for four passages in a serum-free medium in the absence of growth factors. The culture medium was designed to allow better detection of endogenous growth promoting activities, including those of the EGF family [25]. Again, stimulation with EREG in these conditions resulted in a significantly higher growth rate of both U87Ctrl and U87dn cells (Table 2). This effect was reverted by adding

Table 2 Autocrine loop induced by EREG in U87 cells

	Division time in days (R value)	
	U87Ctrl	U87dn
no treatment	2.73 (0.99)	5.08 (1.00)
EREG	2.20 (1.00)	2.86 (0.99)
EREG/Erbitux [®]	3.08 (1.00)	4.50 (1.00)
anti-EREG	3.12 (1.00)	4.76 (0.99)

Cells were plated at 10 000 cells/cm² in 24-well plates and grown for four successive passages in serum-free condition in the presence or absence of 10 ng/ml EREG, with or without antibodies anti-ErbB1 (Erbitux[®], 200 µg/ml) or anti-EREG (5 µg/ml). Cells were counted at each passage and division times were presented as best slopes obtained after four passages (29 days of growth) and from a series of triplicate experiments. Regression lines include the origin (R, correlation coefficient). Control mouse monoclonal antibody (isotype IgG1) had no significant effect.

either Erbitux[®] or anti-EREG antibodies. Interestingly, EREG blocking antibodies also consistently increased by 14% the U87Ctrl cell division time in the absence of exogenous EREG and this effect was not observed in U87dn cells under-expressing EREG. Thus, U87Ctrl cells, but not U87dn cells, actively stimulated themselves by producing both EREG and ErbB1.

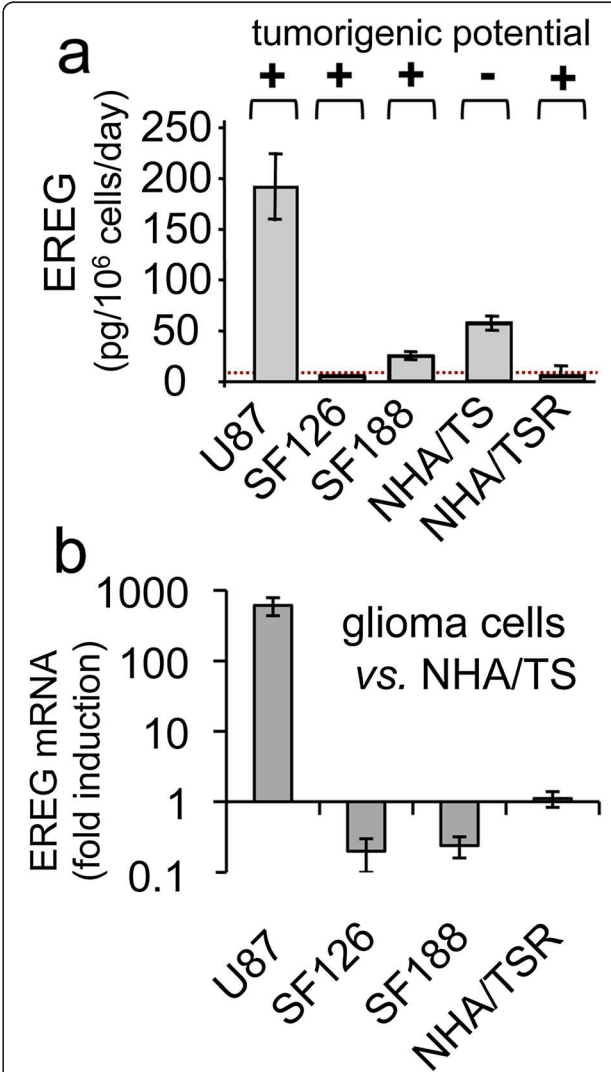


Figure 3 Expression of EREG in human glioma cell lines. (a) EREG immunoreactivity was measured by ELISA in culture media conditioned by glioblastoma cell lines (U87, SF126, SF188), immortalized/non-tumorigenic human astrocytes (NHA/TS) and the NHA/TS tumor variant expressing the *Hras* oncogene (NHA/TSR). The dotted line represents the limit of detection of the measure. The tumorigenic potential of each cell type was evaluated by immunohistochemistry after intracranial implantation of 250 000 cells and analysis of tumor progression at days 10, 20, 30 and 60 post-implantation. (+) tumorigenic, (–) not tumorigenic. **(b)** EREG mRNA expression was represented as fold induction in glioma cells vs. NHA/TS cells. qPCR was performed using HPRT1 as reference gene.

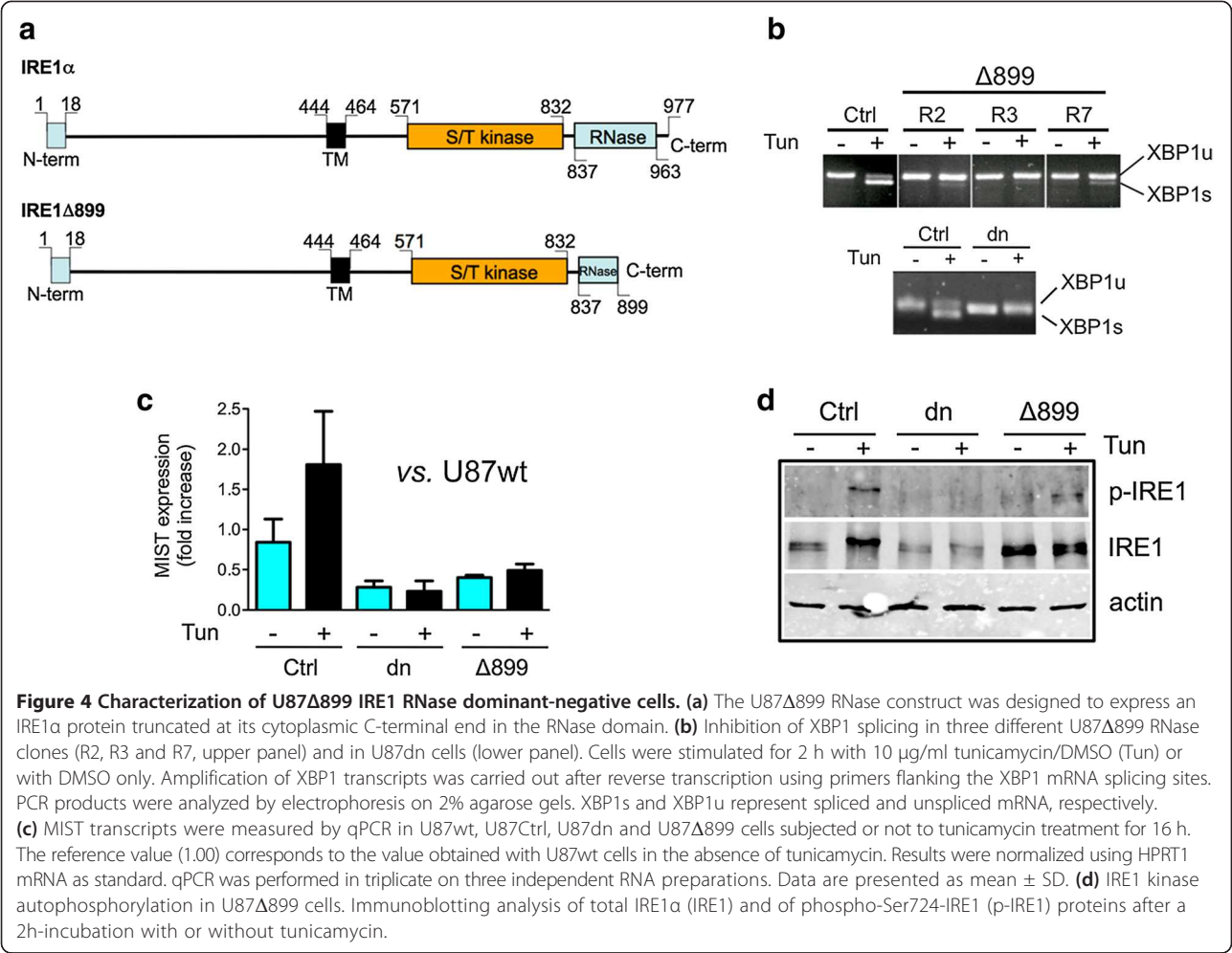
The autocrine effect of EREG was then examined in a xenograft tumor model. After implantation of U87wt cells in mice brain, animals were treated for four weeks with or without Erbitux® and tumor aggressiveness was determined. As shown in Additional file 2, no significant effect of Erbitux® was evidenced in this experimental setting (see also ref. [27]), which may result of a limited antibody delivery to tumor tissues. Besides, the autocrine contribution of EREG is likely to be reduced in the U87 glioma model, as these fast-growing tumors secrete other growth-promoting and angiogenic polypeptides and may exploit alternative signaling pathways for expansion [22,28].

EREG expression and glioma malignancy

EREG mRNA and protein levels were monitored in several human glioma cell lines. As shown in Figure 3a, U87wt, SF126 and SF188 cells were highly tumorigenic in the orthotopic implantation model in mice and released highly variable amounts of EREG protein (up to

200-fold differences). Moreover, non-tumorigenic NHA/TS human astrocytes produced about five-times more EREG than their highly oncogenic *Hras*-transformed (NHA/TSR) counterparts. These results are consistent with those obtained at the mRNA levels (Figure 3b) and indicated that the release of EREG by these glioma cell lines did not strictly correlate with tumor malignancy.

We then evaluated the clinical significance of EREG expression in human gliomas, of which a significant percentage accumulates high levels of ErbB proteins. We documented EREG mRNA production by transcriptome mining using the Gene Expression Omnibus (GEO) and Oncomine databases (Additional file 3). Microarray analyses of gliomas at different grades of malignancy indicated that EREG transcripts were detected in highly variable amounts in tumor tissues, although no clear relationship was established between EREG mRNA levels and the glioma grade or brain tumor type. Individual cases presenting EREG upregulation were also observed by using PCR approaches in both anaplastic



astrocytoma and glioblastoma, as compared to normal brain tissues [21].

REG expression in relation to IRE1 α

The relationship identified between IRE1 α invalidation and the decrease in REG mRNA level was further monitored in U87 glioma cells incubated with tunicamycin, an antibiotic that inhibits N-linked protein glycosylation and triggers ER-stress. In order to assess the respective effects of the protein kinase and RNase cytoplasmic domains of IRE1 α on REG expression, we designed an IRE1 α mutant (IRE1 Δ 899) truncated by 78 amino acids at the C-terminal and invalidated for RNase activity (Figure 4a). Three cell clones (R2, R3 and R7) were selected for their expression of the artificial IRE1 α isoform and inhibition of $\geq 90\%$ of XBP1 pre-messenger splicing under tunicamycin treatment (Figure 4b). Low levels of MIST1 transcripts were consistently detected in U87 Δ 899 cells (Figure 4c), in keeping with the fact that MIST1 is a target gene of the mature XBP1 transcription factor [29]. Conversely, IRE1 α autophosphorylation (phospho-Ser724-IRE1) was still effective in U87 Δ 899 clones and was upregulated with tunicamycin (Figure 4d).

Thus, the IRE1 Δ 899 construct acts as a selective dominant-negative mutant of IRE1 RNase and does not notably affect IRE1 kinase activity.

Kinetic expression of REG was analyzed in U87 cell mutants. REG mRNA levels were similar in U87Ctrl and in U87 Δ 899 cells in basal conditions and were transiently and modestly (~ 2.5 -fold) increased in the two cell variants in response to either tunicamycin (Figure 5a) or thapsigargin (not shown) treatments. Again, U87dn mutant cells defective in both IRE1 kinase and IRE1 RNase activities produced much lower amounts of REG under basal condition, a partial recovery of REG transcript accumulation being observed after 4 to 8 h of incubation with tunicamycin (Figure 5a). Thus, invalidation of IRE1 RNase activity did not compromise REG expression whereas the absence of both kinase and RNase functions strongly affected its production. siXBP1 knockdown, which achieved significant silencing of the XBP1 gene, confirmed that REG expression was independent of the IRE1 RNase/XBP1 axis (Figure 5b).

Since JNK activation can be controlled by IRE1 α kinase activity [30], we further investigated REG production in the presence of the specific pan-JNK inhibitor

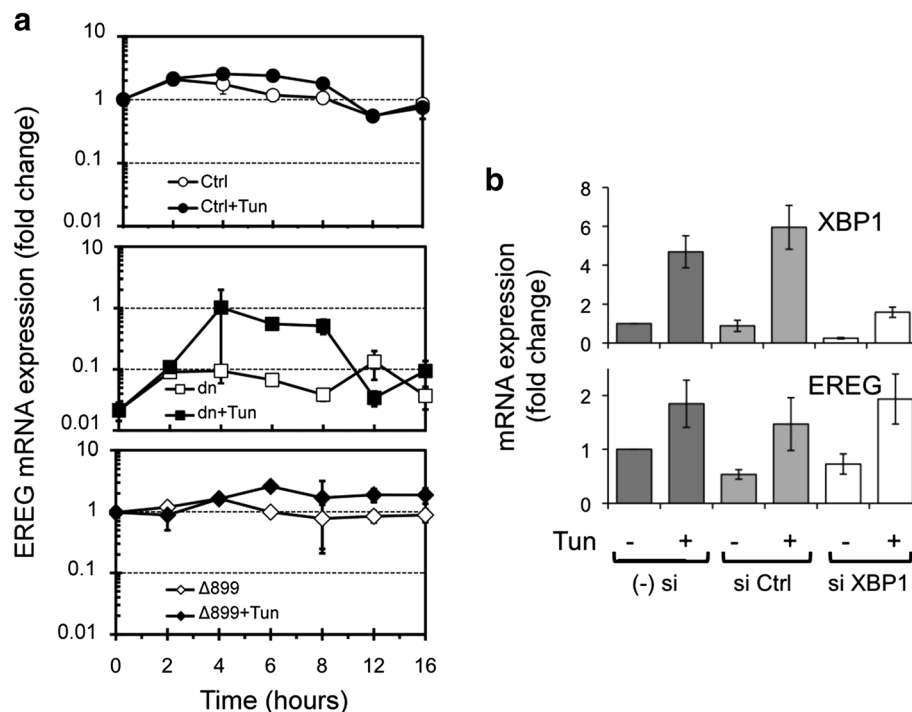


Figure 5 REG mRNA expression in U87 cells is independent of IRE1 RNase activity and of XBP1. **(a)** Kinetic analysis of the expression of REG transcripts by U87Ctrl, U87dn and U87 Δ 899 cells with or without tunicamycin (Tun). qPCR values were presented as fold-increase relative to the reference value obtained in U87Ctrl cells at the beginning of the experiment (t=0). HPRT1 was used as the internal standard and values are represented as the mean of triplicate experiments \pm SD. **(b)** siRNA knockdown experiments. mRNA expression of XBP1 and REG in XBP1 siRNA-transfected (si XBP1), nontarget siRNA-transfected cells (si Ctrl) or in untransfected U87wt cells (- si). After transfection, U87wt cells were incubated for 6 h with or without 10 μ g/ml tunicamycin. Presence of mRNA was monitored by qPCR. Results were expressed as fold-change relative to untransfected U87 cells without tunicamycin and were normalized using HPRT1 mRNA detection.

SP600125. Notably, inhibition of JNK compromises tunicamycin-mediated induction of EREG in both U87Ctrl and U87Δ899 cells after 6 h of incubation (Figure 6a). Thus, involvement of the JNK pathway for IRE1-dependent regulation of EREG was irrespective of the IRE1 RNase status. Moreover, tunicamycin partially restored the ability of U87dn cells to accumulate EREG transcripts and this inducible effect was also strongly hindered by treatment with SP600125. Thus, both IRE1-dependent and IRE1-independent pathways may converge in U87 cells toward JNK signaling and EREG expression under tunicamycin treatment. This is also consistent with the fact that JNK phosphorylation was increased by tunicamycin in all cell variants, including U87dn cells (Figure 6b).

Discussion

EREG is a member of the EGF-like growth factor family acting through ErbB tyrosine-kinase receptors and

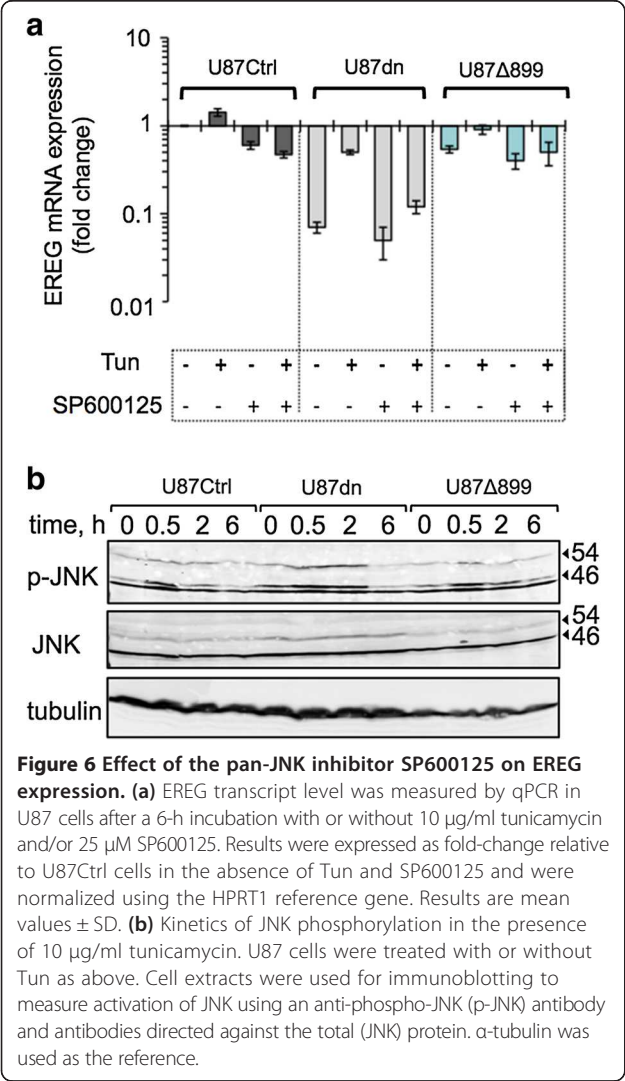
functionally associated to cell proliferation, survival and migration of a wide range of cell types [2,12,31,32]. Its reported functions in mammals include tissue protection, role in development, reproduction, tissue repair and immune-related responses [33-36]. EREG protein is synthesized as a 163 amino-acid transmembrane precursor and is converted to a diffusible peptide by proteolytic cleavage [12]. Its activities require binding to ErbB1 or ErbB4 transmembrane receptors and transduction signaling through their dimeric combinations with any members of the ErbB family [2,13].

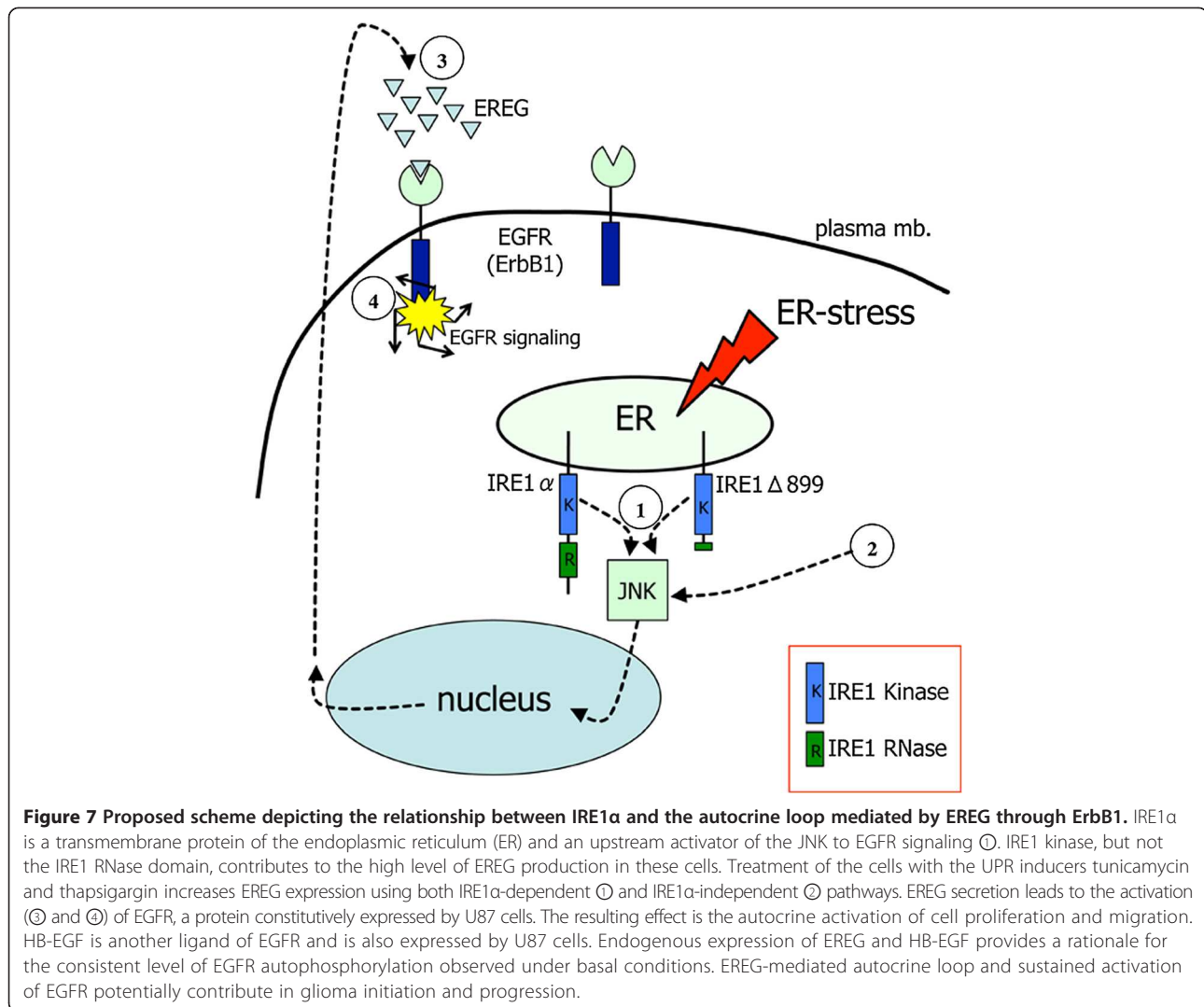
Increased expression of EREG was associated to carcinoma growth, invasion and angiogenesis [16,19,20,23,37] and correlated with poor prognosis [18]. However, the possible implication of EREG in glioma development has not yet been addressed, even though the pathological significance of EGFR has been well established in this pathology. High numbers of wild type or mutated ErbB1 receptors were often detected in primary glioblastomas and in WHO grade II and III oligodendrogliomas [3,4]. The upregulation of the three other ErbB family members in malignant glioma has also been documented [4,5,7].

In this work, EREG expression analyses were performed in several glioma cell lines and were also inventoried in high-grade gliomas from the GEO and Oncomine databases. Both practical and database approaches led to convergent results and indicated that gliomas, as reported for breast cancers [16], produced EREG in highly variable amounts. Same disparities were also observed in gliomas when considering other EGF-like peptides [9,10]. The reasons underlying these modulations likely reflect the wide heterogeneity of gliomas and the possible intervention of a set of transcription factors involved in EREG expression and tumor progression [38-44].

We also showed that the U87 glioma cell line expressed EREG under the dependence of the UPR sensor IRE1α. Inhibition of IRE1α activity, either conducted at the mRNA (siRNA knockdown) or protein (dominant-negative strategy) levels, down-regulated EREG transcript accumulation. In addition, chemical inducers of the UPR such as thapsigargin [45], tunicamycin (this work) or Npi-0052 [46], promote EREG mRNA accumulation in cells, which again suggest a functional link between ER-dependent signaling and EREG expression (see Figure 7, summary illustration).

IRE1α is a bifunctional kinase/RNase enzyme. We evaluated the possible contribution of IRE1 RNase to EREG expression by using a C-terminal truncated IRE1α mutant whose production in cells led to RNase inhibition while maintaining IRE1α autophosphorylation capabilities. Using this mutant, we observed that EREG was expressed at similar rate in RNase-deficient cells as in control cells. In addition, siRNA-mediated knockdown of XBP1 had no significant impact on EREG transcript





levels. Thus, the high production of EREG in U87 cells is subordinated to the presence of IRE1α but is not significantly affected after blockade of either IRE1 RNase or XBP1 functions.

Since IRE1 kinase activity is an upstream mediator of JNK signaling [30], we used the pan-JNK inhibitor SP600125 in order to examine the possible involvement of the IRE1/JNK transduction pathway as an alternative to the IRE1 RNase-dependent axis for production of EREG. The two pathways can be functionally dissociated [47,48], which is consistent with the fact that IRE1α autophosphorylation status in U87 cells does not strictly correlated with the IRE1 RNase-mediated splicing of pre-XBP1 mRNA [22]. As reported here, SP600125 decreased EREG mRNA expression in wild type cells and in cells selectively blocked for IRE1 RNase activity, suggesting that both the IRE1 kinase domain and JNK contributed to EREG expression. Two transcription factors activated downstream of JNK signaling (egr-1 and c-jun

[38,44,49]) were found to modulate EREG expression thus providing a possible molecular link between activation of IRE1α and EREG expression. Interestingly, we showed that U87dn cells expressing low to undetectable amounts of IRE1α also responded to tunicamycin treatment by increasing JNK phosphorylation and EREG mRNA accumulation. Therefore, IRE1-independent pathways may also converge on EREG expression through JNK signaling. Several possible explanations may support this result, including the existence of secondary stimulatory loops mediated by cytokines production independently of the UPR [49,50].

U87 cells release EREG in high amounts and selectively co-express ErbB1 and ErbB2 proteins, but not ErbB3 and ErbB4 proteins. The presence of an autocrine loop mediated by EREG through ErbB1 was demonstrated by the fact that anti-ErbB1 and anti-EREG antibodies (but not anti-ErbB2 antibodies) reduced the basal cell proliferation rate in culture, which was not observed

in IRE1 α -deficient cells underexpressing EREG. Such an autocrine effect mediated by EREG has also been reported in normal cells [31,32]. In addition, other EGF-like ligands such as TGF α and HB-EGF are involved in self-activation loops in gliomas producing ErbB1 [2,9-11].

Conclusion

Our data strongly support the view that autostimulatory effects involving EREG expression under the control of IRE1 α may be expected in different subtypes of gliomas. Over-production of EREG may occasionally contribute to glioma cell growth and migration as well as to secondary effects in brain cancer pathology, including vascular remodeling and reactive gliosis [23,51].

Additional files

Additional file 1: Primers used in this study.

Additional file 2: Kaplan-Meier survival analysis of mice bearing U87Ctrl brain tumors and treated with Erbitux®. Mice implanted in brain with U87Ctrl cells were treated three times a week from day 4 to day 32 after implantation either with 400 μ g/ml of anti-human EGFR antibody (Erbitux®) or with PBS (n = 9).

Additional file 3: EREG mRNA expression in glioma: a survey of the literature. (a) Reports of EREG expression in cells and tissues as depicted in GEO Omnibus (<http://www.ncbi.nlm.nih.gov/geo/>). (b) Analysis of the Oncomine database (<http://www.oncomine.org>) for the modulation of expression of EREG transcript in malignant glioma.

Abbreviations

CAM: Chorio-allantoic membrane; EREG: Epiregulin; HB-EGF: Heparin-binding epidermal growth factor-like growth factor; HPRT: Hypoxanthine-guanine phosphoribosyl transferase; IRE1: Inositol-requiring enzyme 1; LCM: Laser Capture Microdissection; SPARC: Secreted protein acidic and rich in cysteine; THBS: Thrombospondin.

Competing interests

The authors declare no conflict of interest. Roche and Merck Serono were informed of the results of the study but did not contribute to any phase of the study design, analysis, interpretation of the data, or writing of the manuscript.

Authors' contributions

GA, AJ, SG, OM and MM designed the research; DM, OM and NP performed cDNA cloning and subcloning; GA, AJ, MD, SG, DM, OM, SN and MM carried out cell culture, qPCR and protein expression analyses; GA and AJ developed siRNA experiments; GA, AJ, MD, RP performed *in vivo* experiments; MMaitre and AF performed laser microdissection experiments; PV, MS, AB, OM and MM provided unique research material and analytic tools; GA, AJ, MD, SG, RP, SN, MMaitre, MS, DM, OM and MM analyzed data; OM and MM wrote the paper and the other authors critically reviewed the manuscript. The final version of the manuscript was approved by all authors.

Acknowledgements

This work was supported by grants from Ministère de la Recherche et de la Technologie, INSERM; from the Ligue Nationale contre le Cancer (Comité de la Gironde) and by ARC grants #1097 and #5FI20101201935 to MM. The LCM platform at Inserm U862 was financed by the Fondation pour la Recherche Médicale. GA is a recipient of Bonus Qualité Recherche (Université Bordeaux 1) and was also supported by the European Consortium for Tumor Angiogenesis Research (Angiotargeting). French-Ukrainian exchanges were supported by DNIPro program to OM and MM.

Author details

¹Inserm, LAMC, UMR 1029, Talence F-33400, France. ²University Bordeaux, Talence F-33400, France. ³Department of Neurosurgery, Charité, Virchow Medical Center, Humboldt University, Berlin, Germany. ⁴University Bordeaux, Bordeaux F-33077, France. ⁵Inserm, U862, Bordeaux F-33077, France. ⁶CNRS, UMR5297, IINS, Bordeaux F-33077, France. ⁷University Okayama, Okayama, Japan. ⁸Palladin Institute of Biochemistry, National Academy of Science of Ukraine, Kyiv, Ukraine.

Received: 7 April 2013 Accepted: 10 December 2013

Published: 13 December 2013

References

- Ricard D, Idubai A, Ducray F, Lahutte M, Hoang-Xuan K, Delattre JY: **Primary brain tumours in adults.** *Lancet* 2012, **379**(9830):1984–1996.
- Citri A, Yarden Y: **EGF-ERBB signalling: towards the systems level.** *Nat Rev Mol Cell Biol* 2006, **7**(7):505–516.
- Kleihues P, Burger PC, Aldape KD, Brat DJ, Biernat W, Bigner DD, Nakazato Y, Plate KH, Giangaspero F, von Deimling A, et al: **WHO Classification of Tumours of the Central Nervous System.** 4th edition. Lyon: IARC; 2007.
- Huang PH, Xu AM, White FM: **Oncogenic EGFR signaling networks in glioma.** *Sci Signal* 2009, **2**(87):re6.
- Torp SH, Gulati S, Johannessen E, Dalen A: **Coexpression of c-erbB 1–4 receptor proteins in human glioblastomas. An immunohistochemical study.** *J Exp Clin Cancer Res* 2007, **26**(3):353–359.
- Stommel JM, Kimmelman AC, Ying H, Nabioullin R, Ponugoti AH, Wiedemeyer R, Stegh AH, Bradner JE, Ligon KL, Brennan C, et al: **Coactivation of receptor tyrosine kinases affects the response of tumor cells to targeted therapies.** *Science* 2007, **318**(5848):287–290.
- Andersson U, Guo D, Malmer B, Bergenheim AT, Brannstrom T, Hedman H, Henriksson R: **Epidermal growth factor receptor family (EGFR, ErbB2-4) in gliomas and meningiomas.** *Acta Neuropathol* 2004, **108**(2):135–142.
- Bhowmick DA, Zhuang Z, Wait SD, Weil RJ: **A Functional Polymorphism in the EGF Gene Is Found with Increased Frequency in Glioblastoma Multiforme Patients and Is Associated with More Aggressive Disease.** *Cancer Res* 2004, **64**:1220–1223.
- Ekstrand AJ, James CD, Caveness WK, Seliger B, Pettersson RF, Collins VP: **Genes for epidermal growth factor receptor, transforming growth factor alpha, and epidermal growth factor and their expression in human gliomas in vivo.** *Cancer Res* 1991, **51**(8):2164–2172.
- Mishima K, Higashiyama S, Asai A, Yamaoka K, Nagashima Y, Taniguchi N, Kitanaka C, Kirino T, Kuchino Y: **Heparin-binding epidermal growth factor-like growth factor stimulates mitogenic signaling and is highly expressed in human malignant gliomas.** *Acta Neuropathol* 1998, **96**(4):322–328.
- Ramnarain DB, Park S, Lee DY, Hatanpaa KJ, Scoggin SO, Otu H, Libermann TA, Raisanen JM, Ashfaq R, Wong ET, et al: **Differential gene expression analysis reveals generation of an autocrine loop by a mutant epidermal growth factor receptor in glioma cells.** *Cancer Res* 2006, **66**(2):867–874.
- Toyoda H, Komurasaki T, Uchida D, Morimoto S: **Distribution of mRNA for human epiregulin, a differentially expressed member of the epidermal growth factor family.** *Biochem J* 1997, **326**(Pt 1):69–75.
- Shelly M, Pinkas-Kramarski R, Guarino BC, Waterman H, Wang LM, Lyass L, Alimandi M, Kuo A, Bacus SS, Pierce JH, et al: **Epiregulin is a potent pan-ErbB ligand that preferentially activates heterodimeric receptor complexes.** *J Biol Chem* 1998, **273**(17):10496–10505.
- Komurasaki T, Toyoda H, Uchida D, Morimoto S: **Epiregulin binds to epidermal growth factor receptor and ErbB-4 and induces tyrosine phosphorylation of epidermal growth factor receptor, ErbB-2, ErbB-3 and ErbB-4.** *Oncogene* 1997, **15**(23):2841–2848.
- Toyoda H, Komurasaki T, Uchida D, Takayama Y, Isobe T, Okuyama T, Hanada K: **Epiregulin. A novel epidermal growth factor with mitogenic activity for rat primary hepatocytes.** *J Biol Chem* 1995, **270**(13):7495–7500.
- Revillion F, Lhotellier V, Hornez L, Bonnetterre J, Peyrat JP: **ErbB/HER ligands in human breast cancer, and relationships with their receptors, the bio-pathological features and prognosis.** *Ann Oncol* 2008, **19**(1):73–80.
- Zhu Z, Kleeff J, Friess H, Wang L, Zimmermann A, Yarden Y, Buchler MW, Korc M: **Epiregulin is Up-regulated in pancreatic cancer and stimulates pancreatic cancer cell growth.** *Biochem Biophys Res Commun* 2000, **273**(3):1019–1024.

18. Thogersen VB, Sorensen BS, Poulsen SS, Orntoft TF, Wolf H, Nexø E: A subclass of HER1 ligands are prognostic markers for survival in bladder cancer patients. *Cancer Res* 2001, **61**(16):6227–6233.
19. Watanabe T, Kobunai T, Yamamoto Y, Kanazawa T, Konishi T, Tanaka T, Matsuda K, Ishihara S, Nozawa K, Eshima K, et al: Prediction of liver metastasis after colorectal cancer using reverse transcription-polymerase chain reaction analysis of 10 genes. *Eur J Cancer* 2010, **46**(11):2119–2126.
20. Nicholson BE, Frierson HF, Conaway MR, Seraj JM, Harding MA, Hampton GM, Theodorescu D: Profiling the evolution of human metastatic bladder cancer. *Cancer Res* 2004, **64**(21):7813–7821.
21. Hide T, Takezaki T, Nakatani Y, Nakamura H, Kuratsu JI, Kondo T: Combination of a Pdgfra inhibitor and an EGFR-signaling inhibitor prevents tumorigenesis of oligodendrocyte-lineage derived glioma-initiating cells. *Stem Cells* 2011, **29**(4):590–599.
22. Auf G, Jabouille A, Guerit S, Pineau R, Delugin M, Bouchecareilh M, Magnin N, Favereaux A, Maitre M, Gaiser T, et al: Inositol-requiring enzyme 1alpha is a key regulator of angiogenesis and invasion in malignant glioma. *Proc Natl Acad Sci U S A* 2010, **107**(35):15553–15558.
23. Gupta GP, Nguyen DX, Chiang AC, Bos PD, Kim JY, Nadal C, Gomis RR, Manova-Todorova K, Massague J: Mediators of vascular remodelling co-opted for sequential steps in lung metastasis. *Nature* 2007, **446**(7137):765–770.
24. Sasai K, Akagi T, Aoyanagi E, Tabu K, Kaneko S, Tanaka S: O6-methylguanine-DNA methyltransferase is downregulated in transformed astrocyte cells: implications for anti-glioma therapies. *Mol Cancer* 2007, **6**:36.
25. Drogat B, Bouchecareilh M, North S, Petitbois C, Deleris G, Chevet E, Bikfalvi A, Moennner M: Acute L-glutamine deprivation compromises VEGF-a upregulation in A549/8 human carcinoma cells. *J Cell Physiol* 2007, **212**(2):463–472.
26. Lammering G, Valerie K, Lin PS, Mikkelsen RB, Contessa JN, Feden JP, Farnsworth J, Dent P, Schmidt-Ullrich RK: Radiosensitization of malignant glioma cells through overexpression of dominant-negative epidermal growth factor receptor. *Clin Cancer Res* 2001, **7**(3):682–690.
27. Mishima K, Johns TG, Luwor RB, Scott AM, Stockert E, Jungbluth AA, Ji XD, Suvarna P, Voland JR, Old LJ, et al: Growth suppression of intracranial xenografted glioblastomas overexpressing mutant epidermal growth factor receptors by systemic administration of monoclonal antibody (mAb) 806, a novel monoclonal antibody directed to the receptor. *Cancer Res* 2001, **61**(14):5349–5354.
28. Hagedorn M, Javerzat S, Gilges D, Meyre A, de Lafarge B, Eichmann A, Bikfalvi A: Accessing key steps of human tumor progression in vivo by using an avian embryo model. *Proc Natl Acad Sci U S A* 2005, **102**(5):1643–1648.
29. Acosta-Alvear D, Zhou Y, Blais A, Tsikitis M, Lents NH, Arias C, Lennon CJ, Kluger Y, Dynlacht BD: XBP1 controls diverse cell type- and condition-specific transcriptional regulatory networks. *Mol Cell* 2007, **27**(1):53–66.
30. Urano F, Wang X, Bertolotti A, Zhang Y, Chung P, Harding HP, Ron D: Coupling of stress in the ER to activation of JNK protein kinases by transmembrane protein kinase IRE1. *Science* 2000, **287**(5453):664–666.
31. Shirakata Y, Komurasaki T, Toyoda H, Hanakawa Y, Yamasaki K, Tokumaru S, Sayama K, Hashimoto K: Epiregulin, a novel member of the epidermal growth factor family, is an autocrine growth factor in normal human keratinocytes. *J Biol Chem* 2000, **275**(8):5748–5753.
32. Taylor DS, Cheng X, Pawlowski JE, Wallace AR, Ferrer P, Molloy CJ: Epiregulin is a potent vascular smooth muscle cell-derived mitogen induced by angiotensin II, endothelin-1, and thrombin. *Proc Natl Acad Sci U S A* 1999, **96**(4):1633–1638.
33. Lee D, Pearsall RS, Das S, Dey SK, Godfrey VL, Threadgill DW: Epiregulin is not essential for development of intestinal tumors but is required for protection from intestinal damage. *Mol Cell Biol* 2004, **24**(20):8907–8916.
34. Hsieh M, Lee D, Panigone S, Horner K, Chen R, Theologis A, Lee DC, Threadgill DW, Conti M: Luteinizing hormone-dependent activation of the epidermal growth factor network is essential for ovulation. *Mol Cell Biol* 2007, **27**(5):1914–1924.
35. Fan HY, Liu Z, Shimada M, Sterneck E, Johnson PF, Hedrick SM, Richards JS: MAPK3/1 (ERK1/2) in ovarian granulosa cells are essential for female fertility. *Science* 2009, **324**(5929):938–941.
36. Shirasawa S, Sugiyama S, Baba I, Inokuchi J, Sekine S, Ogino K, Kawamura Y, Dohi T, Fujimoto M, Sasazuki T: Dermatitis due to epiregulin deficiency and a critical role of epiregulin in immune-related responses of keratinocyte and macrophage. *Proc Natl Acad Sci U S A* 2004, **101**(38):13921–13926.
37. Regales L, Gong Y, Shen R, de Stanchina E, Vivanco I, Goel A, Koutcher JA, Spassova M, Ouerfelli O, Mellingerhoff IK, et al: Dual targeting of EGFR can overcome a major drug resistance mutation in mouse models of EGFR mutant lung cancer. *J Clin Invest* 2009, **119**(10):3000–3010.
38. Sauer L, Gitenay D, Vo C, Baron VT: Mutant p53 initiates a feedback loop that involves Egr-1/EGF receptor/ERK in prostate cancer cells. *Oncogene* 2010, **29**(18):2628–2637.
39. Cho MC, Choi HS, Lee S, Kim BY, Jung M, Park SN, Yoon DY: Epiregulin expression by Ets-1 and ERK signaling pathway in Ki-ras-transformed cells. *Biochem Biophys Res Commun* 2008, **377**(3):832–837.
40. Kim HS, Kim MS, Hancock AL, Harper JC, Park JY, Poy G, Perantoni AO, Cam M, Malik K, Lee SB: Identification of novel Wilms' tumor suppressor gene target genes implicated in kidney development. *J Biol Chem* 2007, **282**(22):16278–16287.
41. Hayashida T, Takahashi F, Chiba N, Brachtel E, Takahashi M, Godin-Heymann N, Gross KW, Vivanco MM, Wijendran V, Shioda T, et al: HOXB9, a gene overexpressed in breast cancer, promotes tumorigenicity and lung metastasis. *Proc Natl Acad Sci U S A* 2010, **107**(3):1100–1105.
42. Orso F, Penna E, Cimino D, Astanina E, Maione F, Valdembrì D, Giraudo E, Serini G, Sisoni M, De Bortoli M, et al: AP-2alpha and AP-2gamma regulate tumor progression via specific genetic programs. *FASEB J* 2008, **22**(8):2702–2714.
43. Li X, Massa PE, Hanidu A, Peet GW, Aro P, Savitt A, Mische S, Li J, Marcu KB: IKKalpha, IKKbeta, and NEMO/IKKgamma are each required for the NF-kappa B-mediated inflammatory response program. *J Biol Chem* 2002, **277**(47):45129–45140.
44. Charalambous CT, Hannigan A, Tsimbouri P, McPhee GM, Wilson JB: Latent membrane protein 1-induced EGFR signalling is negatively regulated by TGF alpha prior to neoplasia. *Carcinogenesis* 2007, **28**(8):1839–1848.
45. Pereira ER, Liao N, Neale GA, Hendershot LM: Transcriptional and post-transcriptional regulation of proangiogenic factors by the unfolded protein response. *PLoS One* 2010, **5**(9):e12521.
46. Sloss CM, Wang F, Palladino MA, Cusack JC Jr: Activation of EGFR by proteasome inhibition requires HB-EGF in pancreatic cancer cells. *Oncogene* 2010, **29**(21):3146–3152.
47. Ding WX, Ni HM, Gao W, Yoshimori T, Stolz DB, Ron D, Yin XM: Linking of autophagy to ubiquitin-proteasome system is important for the regulation of endoplasmic reticulum stress and cell viability. *Am J Pathol* 2007, **171**(2):513–524.
48. Kato H, Nakajima S, Saito Y, Takahashi S, Katoh R, Kitamura M: mTORC1 serves ER stress-triggered apoptosis via selective activation of the IRE1-JNK pathway. *Cell Death Differ* 2012, **19**(2):310–320.
49. Hoffmann E, Ashouri J, Wolter S, Doerrie A, Dittich-Breiholz O, Schneider H, Wagner EF, Troppmair J, Mackman N, Kracht M: Transcriptional regulation of EGR-1 by the interleukin-1-JNK-MKK7-c-Jun pathway. *J Biol Chem* 2008, **283**(18):12120–12128.
50. Menu P, Mayor A, Zhou R, Tardivel A, Ichijo H, Mori K, Tschopp J: ER stress activates the NLRP3 inflammasome via an UPR-independent pathway. *Cell Death Dis* 2012, **3**:e261.
51. Smith GM, Strunz C: Growth factor and cytokine regulation of chondroitin sulfate proteoglycans by astrocytes. *Glia* 2005, **52**(3):209–218.

doi:10.1186/1471-2407-13-597

Cite this article as: Auf et al.: High epiregulin expression in human U87 glioma cells relies on IRE1α and promotes autocrine growth through EGF receptor. *BMC Cancer* 2013 **13**:597.

Submit your next manuscript to BioMed Central and take full advantage of:

- Convenient online submission
- Thorough peer review
- No space constraints or color figure charges
- Immediate publication on acceptance
- Inclusion in PubMed, CAS, Scopus and Google Scholar
- Research which is freely available for redistribution

Submit your manuscript at
www.biomedcentral.com/submit

