



**HAL**  
open science

## **Lipidosterolic extract of serenoa repens modulates the expression of inflammation related-genes in benign prostatic hyperplasia epithelial and stromal cells.**

Nanor Sirab, Grégoire Robert, Virginie Fasolo, Aurélien Descazeaud, Francis Vacherot, Alexandre de La Taille, Stéphane Terry

### ► To cite this version:

Nanor Sirab, Grégoire Robert, Virginie Fasolo, Aurélien Descazeaud, Francis Vacherot, et al.. Lipidosterolic extract of serenoa repens modulates the expression of inflammation related-genes in benign prostatic hyperplasia epithelial and stromal cells.. International Journal of Molecular Sciences, 2013, 14 (7), pp.14301-20. 10.3390/ijms140714301 . inserm-00858813

**HAL Id: inserm-00858813**

**<https://inserm.hal.science/inserm-00858813v1>**

Submitted on 6 Sep 2013

**HAL** is a multi-disciplinary open access archive for the deposit and dissemination of scientific research documents, whether they are published or not. The documents may come from teaching and research institutions in France or abroad, or from public or private research centers.

L'archive ouverte pluridisciplinaire **HAL**, est destinée au dépôt et à la diffusion de documents scientifiques de niveau recherche, publiés ou non, émanant des établissements d'enseignement et de recherche français ou étrangers, des laboratoires publics ou privés.

Article

8 **Lipidosterolic extract of *Serenoa repens* modulates the**  
9 **expression of inflammation related-genes in benign prostatic**  
10 **hyperplasia epithelial and stromal cells**

11 **Nanor Sirab<sup>1</sup>, Grégoire Robert<sup>1,2</sup>, Virginie Fasolo<sup>3</sup>, Aurélien Descazeaud<sup>4</sup>,**  
12 **Francis Vacherot<sup>1,5,†,\*</sup>, Alexandre de la Taille<sup>1,5,7,†,\*</sup>, Stéphane Terry<sup>1,6,†,\*</sup>**

13  
14 <sup>1</sup> INSERM, Unité 955, Equipe 7, Créteil, F-94000, France

15 sirabnanor@gmail.com (N.S.)

16 <sup>2</sup> CHU de Bordeaux, Service d'urologie, université Bordeaux Segalen, Bordeaux, France.

17 E-Mail: gregoire.robert@chu-bordeaux.fr (G.R.)

18 <sup>3</sup> Qiagen Marseille, F-13288 Marseille, France E-Mail: fasolo@ipsogen.com (V.F.)

19 <sup>4</sup> Hôpital Dupuytren, CHU de Limoges, Service d'urologie, F-87000 Limoges, France. E-Mail:

20 aureliendescazeaud@gmail.com (A.D.)

21 <sup>5</sup> Université Paris Est Créteil, Créteil, F-94000, France. E-Mail: vacherot@u-pec.fr (F.V.)

22 <sup>6</sup> Institut Curie, Centre de Recherche, CNRS UMR3244, Paris, F-75248, France. E-Mail:

23 stephane.terry@curie.fr (S.T.)

24 <sup>7</sup> AP-HP, Hôpital H. Mondor – A. Chenevier, Service d'urologie, F-94000, France. E-Mail:

25 adelataille@hotmail.com (A.D.T)

26 <sup>†</sup>These authors contributed equally to this work.

27  
28 \*correspondence: stephane.terry@gmail.com; adelataille@hotmail.com; vacherot@u-pec.fr; Tel.: 33-  
29 1-49-81-3656 ; Fax: 33-1-49-81-3533.

30 *Received: / Accepted: / Published:*

**Abstract**

Despite the high prevalence of histological Benign Prostatic Hyperplasia (**BPH**) in elderly men, little is known regarding the molecular mechanisms and networks underlying the development and progression of the disease. Here, we explored the effects of a phytotherapeutic agent, Lipidosterolic extract of the dwarf palm plant *Serenoa repens* (**LSESr**), on the mRNA gene expression profiles of two representative models of BPH, BPH1 cell line and primary stromal cells derived from BPH. Treatment of these cells with LSESr significantly altered gene expression patterns as assessed by comparative gene expression profiling on gene chip arrays. The expression changes were manifested 3h following in vitro administration of LSESr suggesting a rapid action for this compound. Among the genes most consistently affected by LSESr treatment, we found numerous genes that were categorized as part of proliferative, apoptotic, and inflammatory pathways. Validation studies using quantitative real-time PCR confirmed the deregulation of genes known to exhibit key roles in these biological processes including *IL1B*, *IL1A*, *CXCL6*, *IL1R1*, *PTGS2*, *ALOX5*, *GAS1*, *PHLDA1*, *IL6*, *IL8*, *NFkBIZ*, *NFKB1*, *TFRC*, *JUN*, *CDKN1B* and *ERBB3*. Subsequent analyses also indicated that LSESr treatment can impede the stimulatory effects of certain proinflammatory cytokines such as IL6, IL17 and IL15 in these cells. These results suggest that LSESr may be useful to treat BPH that manifest inflammation characteristics. This also supports a role for inflammation in BPH presumably by mediating the balance between apoptosis and proliferation.

**Keywords:** Benign prostatic hyperplasia, inflammation, phytotherapy, *Serenoa repens*, gene expression analysis

## 1. Introduction

The histological definition of benign prostatic hyperplasia (**BPH**) refers to an overgrowth and increased proliferation of the epithelial and stromal components of the transition zone and of the peri-urethral area of the prostatic gland. The prevalence of histological BPH is over 70% at 60 years of age and over 90% at 70 years of age [1]. Although androgen and estrogen may contribute to the development of histological BPH, the molecular mechanisms leading to pathogenesis of BPH remain poorly understood [2].

From recent *in vitro* and *in vivo* studies, the notion emerged that chronic prostatic inflammation (**CPI**) could play a major role in the development of BPH [3, 4, 5]. The correlation between CPI and hypertrophic prostate was first reported in 1968 and was extensively described since the early 70s [6]. In 2005, a sub-group analysis of the MTOPS (Medical Therapy of Prostatic Symptoms) study confirmed that CPI could be associated with a higher prostate volume and an increased risk for BPH complication such as acute urinary retention [7]. The REDUCE (REduction by DUtasteride of prostate Cancer Events) study, reported in 2008, confirmed a link between CPI and the International Prostate Symptom Score (**IPSS**) score [8]. Recently, we examined potential relationships between BPH and CPI, and found that CPI associated with a higher IPSS score (21 vs 12) and a larger prostate volume (77 vs 62 cc) [4]. Thus, inflammation may represent a promising target in BPH management. Non-steroidal anti-inflammatory treatments (**NSAIDs**) and cyclooxygenase-2 (COX-2) inhibitors have shown positive effects on the lower urinary tract symptoms (**LUTS**) attributable to BPH [9, 10]. However, these therapeutic agents may not be adapted to all/most BPH patients due to their gastrointestinal and cardiovascular side effects.

The lipidoSterolic extract of the American dwarf palm plant, *Serenoa repens* (**LSESr**), has been used for the last 25 years for the treatment of LUTS suggestive of BPH (permixon). LSESr is essentially made of a complex mixture of fatty acids of which the free forms account for a mean of 83.5g/100g of extract [11]. This mixture includes oleic, lauric, myristic, linoleic and palmitic acids. LSEr also contains a small proportion of phytosterols, aliphatic alcohols and polyprenic compounds.

Several mechanisms of action have been proposed for this phytotherapeutic agent, including an inhibitory effect directed to 5 $\alpha$ -reductase [11, 12, 13], anti-estrogenic effect [14], anti-proliferative / pro-apoptotic action mediated by growth factors inhibition [13, 15, 16, 17]. An anti-inflammatory effect has also been suggested in various settings; LSESr potentially antagonizing the cyclooxygenase-2 (COX-2) and 5-lipoxygenase (5-LOX) metabolites production or suppressing the expression of inflammatory mediators such as MCP-1 and VCAM-1 [18, 19, 20, 21] Here, we describe our experience in testing benign human prostate epithelial and stromal cell models for their responsiveness to LSESr by analyzing LSESr-induced changes of gene expression profiles and cell behavior in cultures.

The histological definition of benign prostatic hyperplasia (**BPH**) refers to an overgrowth and increased proliferation of the epithelial and stromal components of the transition zone and of the peri-urethral area of the prostatic gland. The prevalence of histological BPH is over 70% at 60 years of age and over 90% at 70 years of age [1]. Although androgen and estrogen may contribute to the development of histological BPH, the molecular mechanisms leading to pathogenesis of BPH remain poorly understood [2].

From recent *in vitro* and *in vivo* studies, the notion emerged that chronic prostatic inflammation (**CPI**) could play a major role in the development of BPH [3, 4, 5]. The correlation between CPI and hypertrophic prostate was first reported in 1968 and was extensively described since the early 70s [6]. In 2005, a sub-group analysis of the MTOPS (Medical Therapy of Prostatic Symptoms) study confirmed that CPI could be associated with a higher prostate volume and an increased risk for BPH complication such as acute urinary retention [7]. The REDUCE (REduction by DUtasteride of prostate Cancer Events) study, reported in 2008, confirmed a link between CPI and the International Prostate Symptom Score (**IPSS**) score [8]. Recently, we examined potential relationships between BPH and CPI, and found that CPI associated with a higher IPSS score (21 vs 12) and a larger prostate volume (77 vs 62 cc) [4]. Thus, inflammation may represent a promising target in BPH management.

Non-steroidal anti-inflammatory treatments (**NSAIDs**) and cyclooxygenase-2 (**COX-2**) inhibitors have shown positive effects on the lower urinary tract symptoms (**LUTS**) attributable to BPH [9, 10]. However, these therapeutic agents may not be adapted to all/most BPH patients due to their gastrointestinal and cardiovascular side effects.

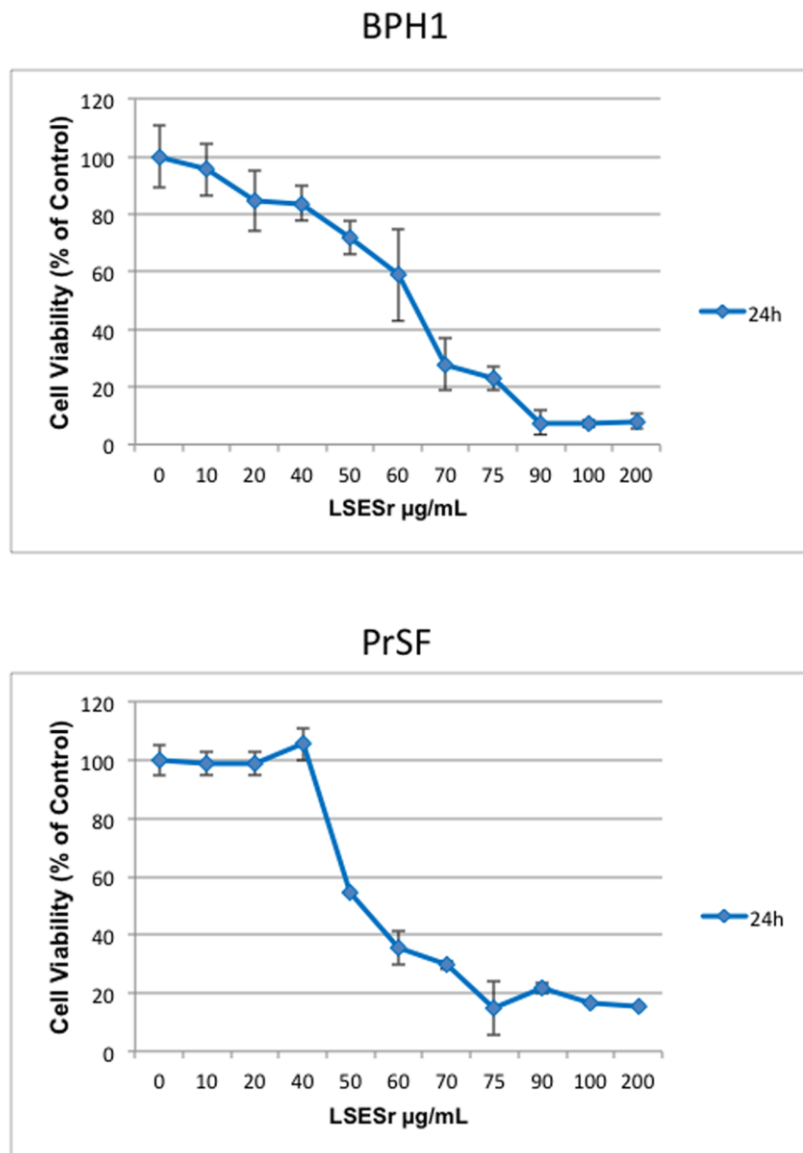
The lipidoSterolic extract of the American dwarf palm plant, *Serenoa repens* (**LSESr**), has been used for the last 25 years for the treatment of LUTS suggestive of BPH (permixon). LSESr is essentially made of a complex mixture of fatty acids of which the free forms account

## **2. Results**

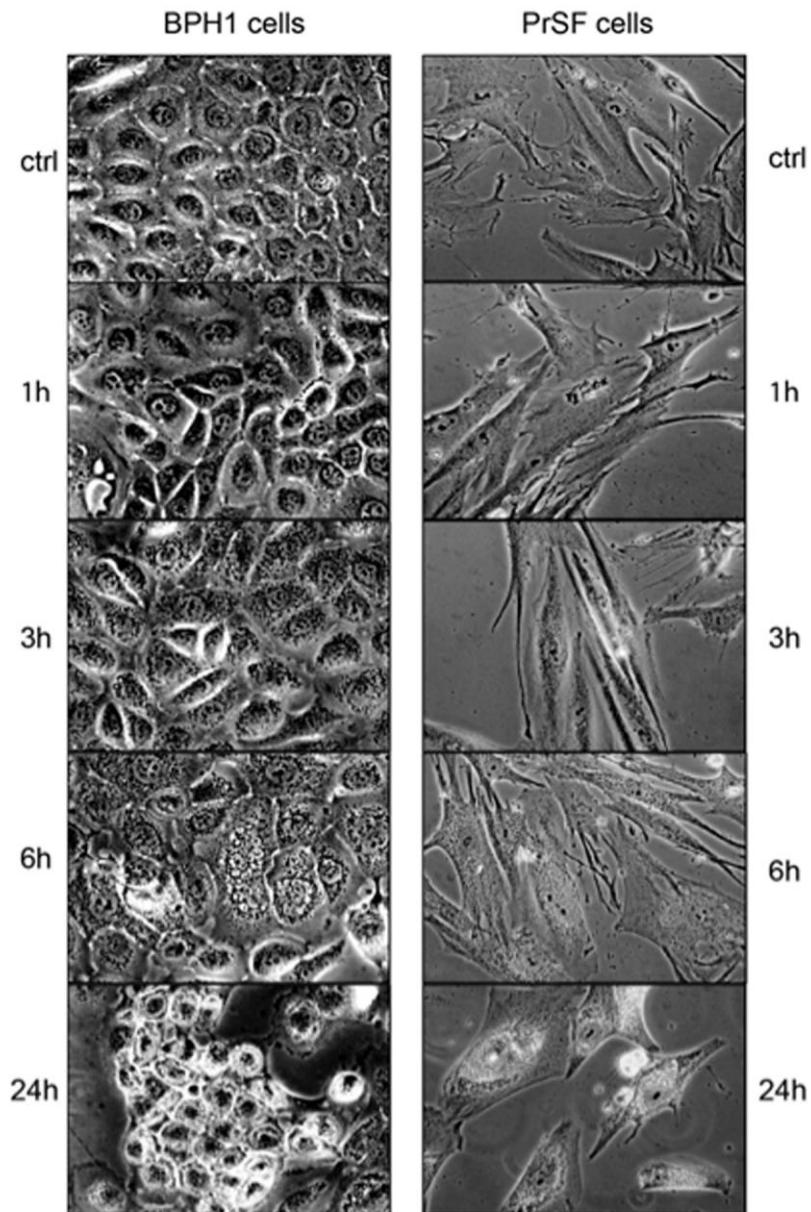
### ***2.1. LSESr affects cell viability in cultured human epithelial and stromal cells derived from BPH.***

We first evaluated the effect of LSESr on cell viability of the available immortalized BPH-1 human prostate epithelial cells as well as in primary stromal fibroblasts (PrSF) isolated in our site. Cells were exposed to LSESr for 24h with doses ranging from 10 to 200µg/mL, and viability was assessed using MTT assay. In these conditions, LSESr showed a dose-dependent cytotoxic effect with cells showing almost 100% decrease of cell viability when exposed to the 100µg/mL dose or above (Figure 1a). Stromal and epithelial cells respond similarly to LSESr. The estimated 50% lethal concentration (LC50) was 60µg/mL for BPH1 cells and 50µg/mL for PrSF. Since drastic effects were evident at 24h following treatment, we wondered whether the cells show any early morphological changes after exposure to LSESr. Light microscope analysis revealed cytoplasmic vesicles in BPH epithelial and stromal cells, as early as 3 hours of LSESr supplementation and increasing with time (Figure 1b).

**Figure 1a.** MTT assay showing dose ranging (10 to 200 µg/mL) effect of lipidosterolic extract of *Serenoa repens* (LSESr) at 24h on the cell viability of BPH1 immortalized epithelial cell line (left) and PrSF primary culture of stromal cells (right). The mean value of the optical density (OD) measured in the control condition (0) was defined as 100% survival with other conditions reported as a percent of the control. Error bars show standard error of the mean.



**Figure 1b.** Microscopic observation of BPH1 epithelial cells (left) and PrSF stromal cells (right) after 1h, 3h, 6h and 24h exposure to LSESr as compared to untreated cells (0h). Phase contrast photomicrographs (40x) show the accumulation of vesicles in the cytoplasm of both cell types after 3h of exposure to LSESr. In this experiment, the final concentration of LSESr is 60 $\mu$ g/mL for epithelial cells and 50 $\mu$ g/mL for stromal cells.





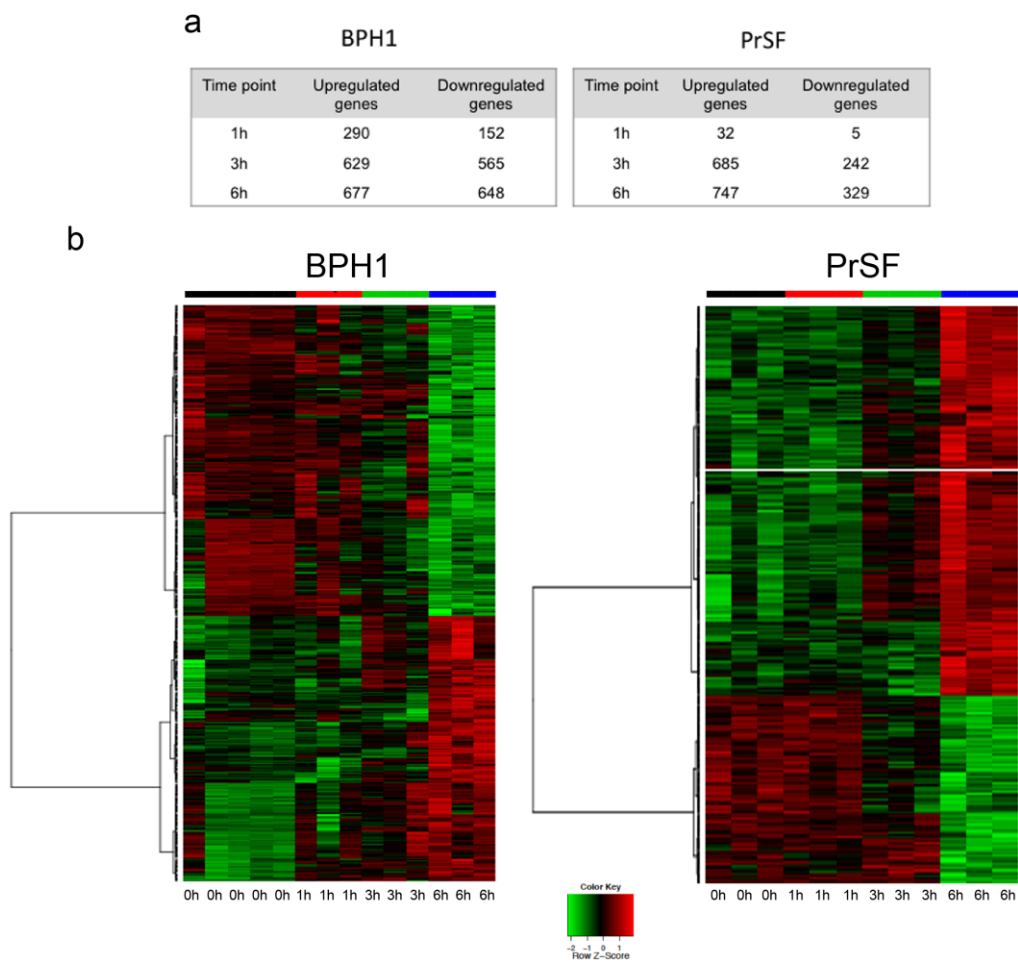
## **2.2. Gene Expression Profiling of BPH epithelial and stromal cells treated with LSESr.**

### **2.2.1. LSESr induces changes in gene expression pattern in BPH epithelial and stromal cells.**

We explored the dynamic effect of LSESr on gene expression profiles of stromal and epithelial BPH cells. Using Affimetrix human U133 Plus 2.0 Arrays, gene expression profiles were successfully obtained from BPH1 epithelial cell line and PrSF stromal cells exposed to LSESr for 1, 3 or 6 hours, and compared to untreated control cells.

A first explorative analysis by hierarchical clustering incorporating genes most significantly deregulated indicated substantial differences between treated and untreated cells, and between different time points (not shown). In both cell types, clustering of deregulated genes demonstrated that 3h and 6h exposures were more closely related, while separated from untreated and 1h exposure. On further analysis, we inspected for differentially expressed genes in the different time points relative to untreated cells (Table S1a and S1b). 140 of the differentially expressed genes were in common between both cell types (Table S1c), however only a few seemed similarly up or downregulated at the respective time points such as *GAS1* (growth arrest-specific 1) and *CDKN1B* (cyclin-dependent kinase inhibitor 1B (p27, Kip1)). This information argues for distinct cell responses in the two models. The maximum number of differentially expressed genes in both cell types was observed after 6 hours of LSESr treatment (Figure 2a). Similarly, in the epithelial cells, 677 genes were up-regulated and 648 were down-regulated upon 6h exposure to LSESr (Figure 2b). In the stromal cells, 747 genes were up-regulated and 329 genes were down-regulated after 6 hours exposure to the LSESr (Figure 2a and b).

**Figure 2.** Microarray profiling of gene expression in control (0h) and LSESr treated BPH epithelial (left) and stromal (right) cells. BPH cells are treated in three replicates for 1, 3 and 6 hours by LSESr (60 µg/mL for BPH1, 50 µg/mL for PrSF). (a) Differential analysis representing the number of up/down-regulated genes at 0h, 1h, 3h, and 6h (b) Heat maps demonstrating the relative level of differentially expressed genes after 6h exposure to LSESr. An FDR adjusted p-value represents the significance of the enrichment. Only annotations with a significant FDR adjusted p-value of <0.05 are shown.



### 2.2.2. Changes in apoptosis, proliferation and inflammation related processes revealed by Gene Ontology (GO) analysis.

We then wondered whether the gene expression patterns in epithelial and stromal cells treated by LSESr are related to any particular biological function. To this end, we applied GSA (gene set analysis) [22] to investigate overrepresented pathways among genes with up or down-regulation in treated cells. We found that the majority of genes deregulated by LSESr exposure are involved in several biological processes as defined by Gene Ontology (GO) databases. This included cellular metabolism, cell cycle and differentiation, apoptosis, organ morphogenesis, hormone secretion, angiogenesis, phosphorylation, signal transduction, cellular responses to pathogens and external stimulus (Table S1d and S1e). Furthermore, using the DAVID functional annotation, we found that among functional terms that gather several of these processes, apoptosis, proliferation and inflammation terms were greatly affected, although the inflammation group failed to demonstrate statistical significance in the surveyed stromal cells (Figure 3a). Overall, 160 genes and 155 genes were found in these categories for epithelial and stromal cells, respectively. Other biological processes potentially associated with inflammation were consistently perturbed in BPH1 cells (e.g. leukocytes chemotaxis, leukocyte migration, cytokine production, immune system development, regulation of response to stimulus)(Table S1d) and in PrSF cells to a lesser extent (e.g. cytokine production, leukocyte activation, regulation of i kappab kinase nf kappab cascade) (Table S1e).

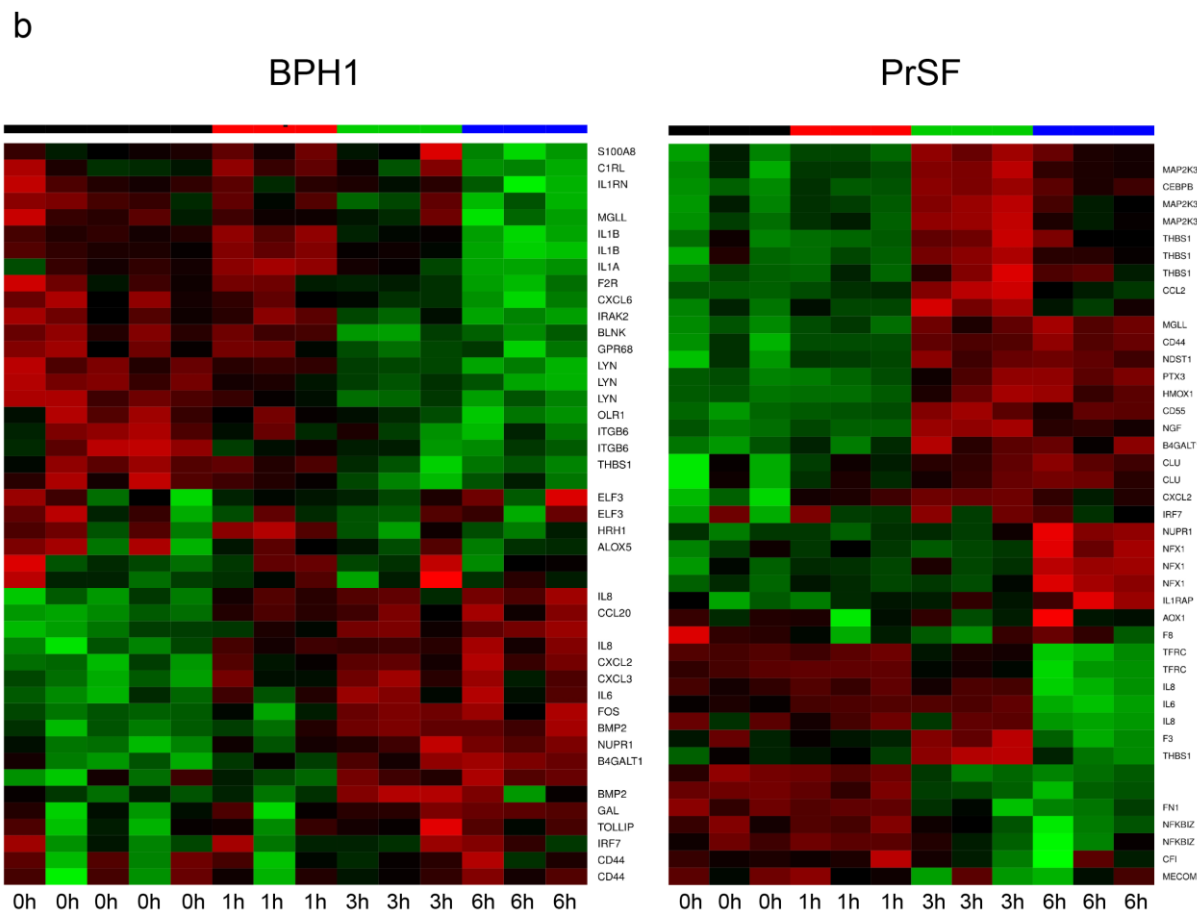
Of the proliferation markers markedly affected after 6 hours of treatment in BPH1 epithelial cells, *PHLDA1* (pleckstrin homology-like domain, family A, member 1) was down-regulated (FC = -1.1), whereas *GAS1* and *DEDD* (death effector domain containing) expressions were augmented (Fold Changes (FC) = 1.45 and 0.77, respectively) (Supplementary Figure 1a, Table S1f, S1g and Table 1). In PrSF stromal cells, a significant decrease in *ERBB3* expression (v-erb-b2 erythroblastic leukemia viral oncogene homolog 3 (avian)) and *JUN* (jun proto-oncogene) was observed as compared with untreated cells (FC = -0.97 and -0.76, respectively). Moreover, genes well known for their anti-proliferative and/or pro-apoptotic effect, such as *CDKN1B* (FC = 0.84) and *GAS1* (FC = 0.73), were

up-regulated in this cell type upon exposure to LSESr (Supplementary Figure 1b and Table S1h and S1i, and Table 1).

**Figure 3.** Gene Ontology (GO) analysis. **(a)** DAVID analysis for differentially regulated genes which belong to the categories of inflammation, apoptosis and regulation of proliferation in at least one time point. Gene Ontology (GO) based annotation was used to perform functional enrichment analysis using DAVID tools. **(b)** Heat maps of significantly differentially expressed genes involved in the inflammation process in BPH epithelial cells (left) and PrSF cells (right) treated by LSESr at different time-points as compared to control. Genes significantly up-regulated are in red and down-regulated are in green. Black bar is for control (0h), red for 1h, green for 3h and blue for 6h of exposure to LSESr.

**a**

GOID	Term	Regulated genes number in BPH1	P value	Regulated genes number in PrSF	p value
GO:0006954	Inflammation	35	0.05	31	0.09
GO:0006915	Apoptosis	68	2.7E-3	74	6.4E-5
GO:0008285	Anti-proliferation	57	7.9E-7	54	4.2E-7



### 2.2.3. LSESr perturbs expression of inflammation-related genes in BPH epithelial and stromal cells.

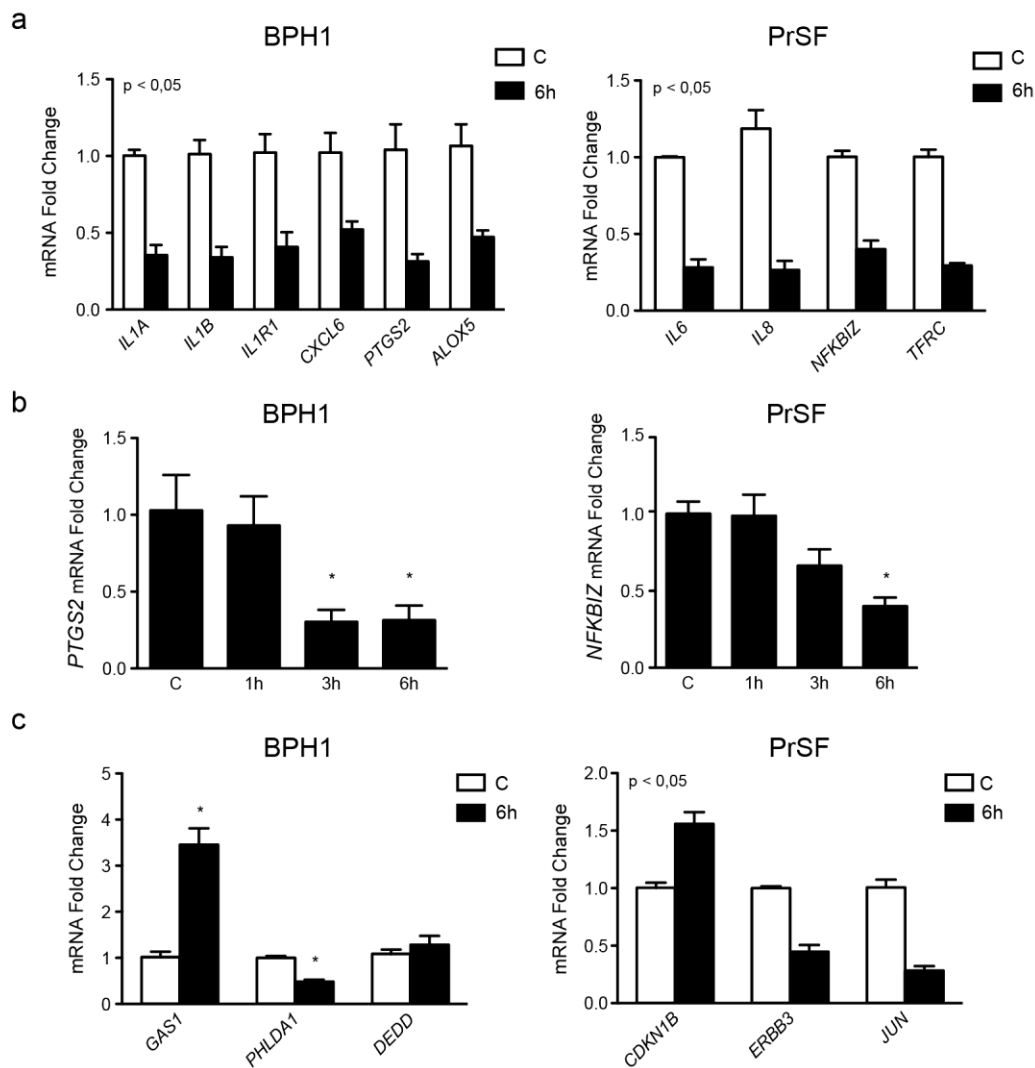
We then sought to appreciate further the effect of LSESr on inflammation-related genes by analyzing their expression at the different time points. Generated heatmaps showed a marked deregulation of the genes in both epithelial and stromal cells following LSESr exposure (Figure 3b). Among the genes affected in epithelial cells treated for 6 hours, we observed substantial down-regulation ( $-1.67 \leq FC \leq -0.58$ ) of *IL1A* (interleukin 1, alpha), *IL1B* (interleukin 1, beta), *CXCL6* (chemokine (C-X-C motif) ligand 6), *ALOX5* (arachidonate 5-lipoxygenase) *IL1R1* (interleukin 1 receptor, type I) and *PTGS2* (prostaglandin-endoperoxide synthase 2, commonly referred to as COX2) while *NFKB1A* (nuclear factor of kappa light polypeptide gene enhancer in B-cells inhibitor, alpha) was up-regulated in this setting (Figure 3b; Table 1; Table S1a and S1j).

With regards to stromal cells, genes such as *IL6* (interleukin 6), *IL8* (interleukin 8), *NFKB2* (nuclear factor of kappa light polypeptide gene enhancer in B-cells inhibitor, zeta) as well as *TFRC* (transferrin

receptor (p90, CD71) were found as being consistently down-regulated ( $-1.69 \leq FC \leq -1.1$ ) after 6 hours treatment with LSESr (Figure 3b; Table 1; Table S1b and S1k). These results suggest that LSESr treatment in both BPH cell types modulated the expression of genes involved in inflammation, cell growth and survival pathways.

To ascertain this finding, we then chose a set of genes from the previous lists, and their mRNA expression was inspected by real time RT-PCR for deregulation upon 6h treatment. 10 genes were selected based upon their putative role in the inflammation pathways (*IL1A*, *IL1B*, *CXCL6*, *IL1R1*, *ALOX5* and *PTGS2* for epithelial cells, *IL6*, *IL8*, *NFKBIZ* and *TFRC* for stromal cells) and 6 additional genes were selected for their potential involvement in apoptosis/proliferation pathways (*DEDD*, *PHLDA1*, *GAS1*, *CDKN1B*, *ERBB3* and *JUN*). The results obtained from these experiments were highly consistent with the microarray data, thus validating the previous experiments (Table 1). As shown in Figure 4, the mRNA expression of 15 out of 16 selected genes was significantly affected by the exposure to LSESr including all the inflammatory related genes presenting with pronounced decrease in expression detected at 6h time point (Figure 4a). We also noted an apparent time-dependent regulation for some of these genes including *PTGS2* (COX2) in BPH1 cells, and *NFKBIZ* in PrSF cells (Figure 4b). Significant increase in the expression levels of *GAS1* (FC = 1.79) and *CDKN1B* (FC = 0.64), genes specific for cell growth suppression was also detected in BPH1 and PrSF, respectively (Figure 4c). In contrast less remarkable expression changes were found for *DEDD*, although we could note a trend to augmented expression as expected from the microarray results.

**Figure 4.** Real Time PCR (RT-PCR) measurements confirming the results of the Microarray study. **(a)** qRT-PCR analysis for mRNA expression of some inflammatory markers in BPH1 cells (left): *IL1B*, *IL1A*, *IL1R1*, *CXCL6*, *ALOX5*, *PTGS2* and *ALOX5* and in PrSF cells (right) *IL6*, *IL8*, *NFKBIZ* and *TFRC*. **(b)** RT-PCR showing a time-dependent regulation of mRNA expression by LSESr. The transcript expression of *PTGS2* in BPH1 cells (left) was decreased significantly after 3 and 6 hours of LSESr supplementation. *NFKBIZ* down-regulation in PrSF cells was significant only after 6 hours. **(c)** qRT-PCR analysis for mRNA expression of Apoptosis and cell cycle related genes (*GAS1*, *CDKN1B*, *PHLDA1*, *ERBB3*, *DEDD* and *JUN*). Bars, SD for 3 experiments, each performed in duplicate; \*P < 0.05, \*\*P < 0.01



**Table 1:** List of selected genes significantly upregulated or downregulated at 6h of treatment with LSESr

<b>BPH1 cells</b>				
<b>Gene</b>	<b>Description</b>	<b>FC (MA*)</b>	<b>FC (qPCR**)</b>	<b>Representative GO TERMS</b>
<b>CXCL6</b>	chemokine (C-X-C motif) ligand 6	-1.67	-0.94	inflammatory response, immune response, chemotaxis, defense response
<b>IL1A</b>	interleukin 1, alpha	-1.02	-1.49	inflammatory response, immune response, defense response, cell proliferation
<b>IL1B</b>	interleukin 1, beta	-1.13	-1.56	inflammatory response, immune response, defense response, cell proliferation, apoptosis
<b>IL1R1</b>	interleukin 1 receptor	-0.78	-1.29	immune response, defense response, cytokine-mediated signaling pathway
<b>PTGS2</b>	prostaglandin-endoperoxide synthase 2	-1.21	-1.67	fatty acid metabolic process, inflammatory response, cell proliferation, apoptosis
<b>ALOX5</b>	arachidonate 5-lipoxygenase	-0.58	-1.08	fatty acid metabolic process, defense response, inflammatory response
<b>PHLDA1</b>	pleckstrin homology-like domain, family A, member 1	-1.10	-1.04	apoptosis, cell death, glycoprotein metabolic process
<b>GAS1</b>	growth arrest-specific 1	1.45	1.79	cell proliferation, cell cycle arrest, apoptosis, cell morphogenesis
<b>DEDD</b>	death effector domain containing	0.77	0.36	apoptosis, cell death, transcription
<b>CDKN1B</b>	cyclin-dependent kinase inhibitor 1B (p27, Kip1)	0.50	NS	cyclin-dependent protein kinase inhibitor, apoptosis, proliferation, cell cycle arrest
<b>PrSF cells</b>				
<b>Gene</b>	<b>Description</b>	<b>FC (MA*)</b>	<b>FC (qPCR**)</b>	<b>Representative GO TERMS</b>
<b>IL6</b>	interleukin 6 (interferon, beta 2)	-1.69	-1.83	inflammatory response, immune response, proliferation, chemotaxis, defense response
<b>IL8</b>	interleukin 8	-1.81	-1.91	inflammatory response, immune response, proliferation, chemotaxis, defense response
<b>NFkBIZ</b>	nuclear factor of kappa light polypeptide gene enhancer in B-cells inhibitor, zeta	-1.11	-1.32	inflammatory response, regulation of transcription, defense response
<b>TFRC</b>	transferrin receptor (p90, CD71)	-1.23	-1.77	endocytosis, vesicle-mediated transport, inflammatory response, defense response
<b>ERBB3</b>	v-erb-b2 erythroblastic leukemia viral oncogene homolog 3 (avian)	-0.97	-1.16	cell surface receptor linked signal transduction, apoptosis, proliferation
<b>JUN</b>	jun oncogene	-0.76	-1.81	apoptosis, cell death, proliferation, transcription
<b>CDKN1B</b>	cyclin-dependent kinase inhibitor 1B (p27, Kip1)	0.84	0.64	cyclin-dependent protein kinase inhibitor, apoptosis, proliferation, cell cycle arrest
<b>GAS1</b>	growth arrest-specific 1	0.73	NS	cell proliferation, cell cycle arrest, apoptosis, cell morphogenesis

\*Log<sub>2</sub> Fold changes from Microarray gene profiles were calculated as the difference between the log<sub>2</sub> transformed normalized mean probe intensities from untreated vs treated cells of three independent experiments.

\*\*Log<sub>2</sub> Fold changes from real-time qPCR as assessed using values from  $-(\Delta\Delta CT)$  derived from three independent experiments. Untreated conditions served as calibrator and TBP as reference housekeeping gene. NS ; not significant.



### **2.3. LSESr impedes the effects of pro-inflammatory factors on proliferation in BPH epithelial and stromal cells.**

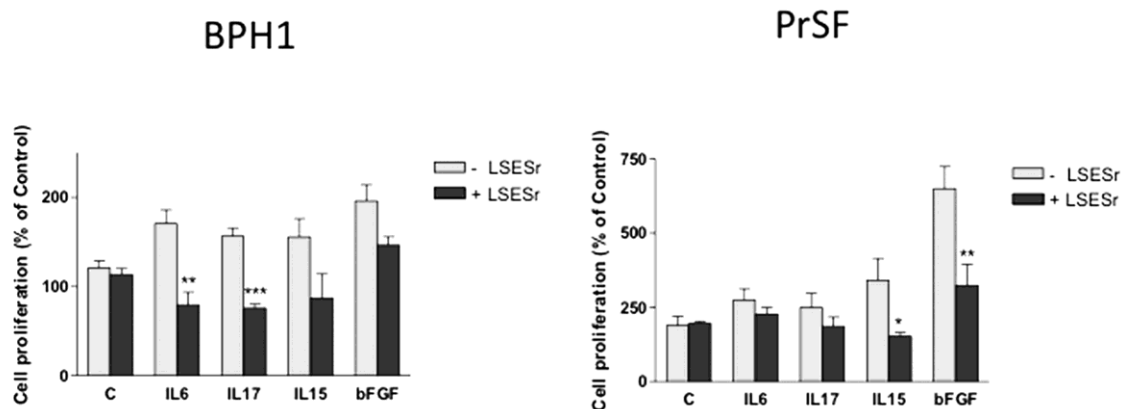
Previous findings are consistent with an inhibitory role of LSESr on the intrinsic inflammatory gene expression pattern in cultures of BPH epithelial and stromal cells. It is worth noting that chronic inflammation in BPH is assumed to mediate epithelial/stromal interactions. Thus, a variety of cytokines and growth factors may be released by inflammatory cells, presumably regulating the differentiation and the growth of stromal and epithelial BPH cells. In an attempt to further appreciate the anti-inflammatory activity of LSESr, we examined cell proliferation in cultures of BPH-1 and PrSF cells that were supplemented with bFGF (basic Fibroblast Growth Factor) or cytokines (10 µg/mL) in the presence or absence of LSESr, at concentration below LC50 in order to limit its potential effects on apoptosis. A set of interleukins defined as pro-inflammatory in BPH including IL6, IL15 and IL17 were selected for these experiments. In BPH1 cells, adjunction of these pro-inflammatory signals alone seemed to stimulate cell proliferation as assessed by BrdU incorporation (Figure 5a, left). The addition of 50µg/mL of LSESr to the culture medium of the stimulated cells resulted in a seeming decrease of the proliferation index. Statistical significance was achieved in cells stimulated by IL6 and IL17. With regards to stromal cells, bFGF and IL15 induced cell proliferation relative to control cells and LSESr 40µg/mL was sufficient to significantly impair the proliferation in cells supplemented with IL15 and bFGF (Figure 5a, right).

These results suggested that the inflammatory response and proliferation processes might be linked in BPH cells, at least to some extent, and that LSESr can disturb this link. To test further this possibility, we assessed the transcript expression of different inflammatory-related genes in cultures of BPH1 or PrSF cells supplemented with IL17 and IL15, respectively, in the presence or absence of LSESr. In these conditions, we found that LSESr treatment down-regulated genes such as *PTGS2*, *IL1B* and *NFKB1* in the epithelial cells receiving IL17 supplement (Figure 5b). Expression of *IL8*, *IL1B* and *NFKB1* was likewise reduced in stromal primary cells receiving IL15 supplement. These findings

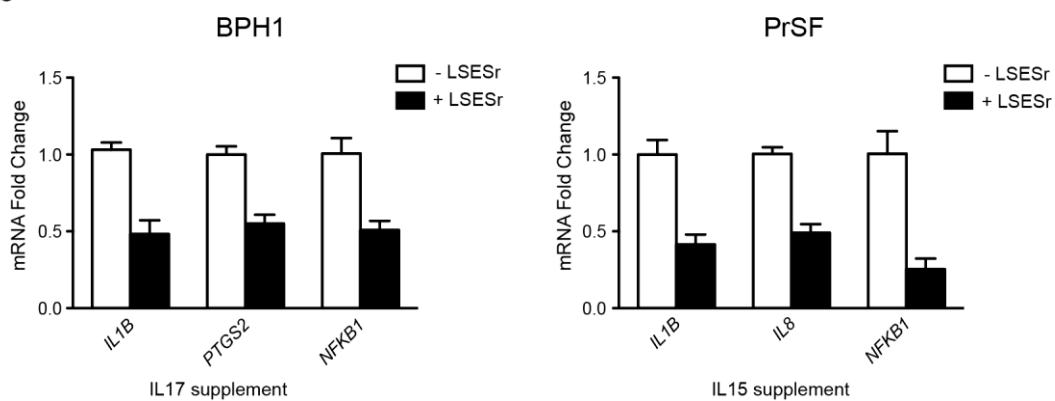
suggest that LSESr might suppress inflammation/proliferation processes mediated by pro-inflammatory factors in both BPH epithelial and stromal cells.

**Figure 5.** Effects of LSESr in BPH epithelial and stromal cells stimulated by inflammatory factors. **(a)** BrdU incorporation assay investigating cell proliferation index. Cells were treated with 10 ng/mL of recombinant human IL6, IL17, IL15 or bFGF for 24 hours in presence or absence of LSESr. **(b)** qRT-PCR analysis for mRNA expression of some inflammatory markers in epithelial cells stimulated by IL17 (left), or in stromal cells stimulated by IL15 (right) in the presence or absence of LSESr. In BPH1 cells, *PTGS2*, *IL1B* and *NFkB1* were down-regulated by LSESr.

**a**



**b**



#### 2.4. Discussion

The Lipidosterolic extract of *Serenoa repens* (LSESr) is the most widely studied and prescribed phytotherapeutic agent for the treatment of lower urinary tract symptoms (LUTS) in BPH, mainly because of positive comparisons to  $\alpha$ -blockers and  $5\alpha$ -reductase inhibitors [12]. However, its precise mechanisms of action remain to be elucidated. In this study, we explored the consequences of LSESr treatment on gene expression patterns in cultures of BPH epithelial and stromal cells, which represent the two predominant cell contingents in BPH. To our knowledge, this study is the first to report gene expression profiling in BPH cells treated by LSESr. We confirmed the anti-inflammatory role of LSESr and provide new evidence that LSESr affects various inflammatory genes and pathways with putative roles in BPH pathology [3]. The pathogenesis of BPH is age-related and dependent upon the presence of androgens [2]. The prevalence of BPH increases with age, whereas levels of circulating androgens generally decline. Thus, although androgen may play a permissive role in BPH, other molecular processes are certainly involved in the initiation and development of BPH. The chronic prostatic inflammation (CPI) might be a good candidate in this regard [3, 4, 23]. As a corollary, it would appear at first quite relevant to treat the urinary symptoms of BPH with anti-inflammatory agents, such as NSAIDs and COX-2 inhibitors [10, 24, 25]. However, these drugs are not recommended for a chronic condition such as BPH because of their important side-effects. Therefore, the interest rises for using phytotherapeutic agents in LUTS treatment as substitute of synthetic molecules. LSESr plant extract, which is believed to have certain anti-inflammatory effects, has been prescribed for more than 25 years without any major side effect being reported. Vela Navarette *et al* first described LSESr effect on prostate inflammatory status in a clinical study showing a significant reduction in the number of B-lymphocytes (58.2 vs 91.4;  $p=0.097$ ) and other immune response markers (TNF $\alpha$  and IL-1 $\beta$ ) after treatment [26]. In our study, we used two suitable models derived from BPH specimens to further investigate the regulatory mechanisms underlying BPH and to study the immediate effects of LSESr on the two major components of this pathology. Our gene expression

survey indicated that LSESr greatly influences genes belonging to immune response, apoptosis and cell proliferation pathways. Such deregulation was hardly detectable after one hour of treatment while the maximum number of deregulated genes was observed after 6 hours of treatment. Accumulation of cytoplasmic vesicles was apparent after 3h LSESr exposure suggesting rapid entry of LSESr into cells along with potential changes in the lipid composition of membranes.

Notably, multiple inflammation functional pathways, such as Cytokines family, Glucocorticoid/PPAR signaling, MAPK signaling, TNF superfamily and COX/LOX pathways, seemed to be affected by LSESr treatment. Some of these genes encode for molecules assumed to be key mediators in the inflammation process such as *IL6*, *IL8* in stromal cells [27, 28, 29, 30], or *IL1A*, *IL1B* and their receptor *IL1RI* in epithelial cells. Earlier work suggested that LSESr could perturb the production of COX-2 and 5-LOX metabolites [18]. Our microarray study further supports the down-modulation of *PTGS2* (which encodes the protein COX-2) and *ALOX5* (which encodes the protein 5-LOX) in the epithelial cells. *CXCL6*, which is also down-regulated in LSESr-treated BPH1 cells, encodes a protein with pro-angiogenic properties and chemoattractant for neutrophils [31]. Interestingly, an anti-inflammatory effect of LSESr was proposed in previous work focusing on the inflammation mediators MCP-1/CCL2 and VCAM-1 [20] in various cell populations including neutrophils, vascular endothelial and myofibroblast cells. *TFRC* has been proposed as a tumor biomarker in a wide spectrum of malignancies, including B-cell lymphoma, pancreatic, esophageal, cervical as well as prostate cancers [32, 33, 34, 35, 36, 37]. In macrophages, its expression is induced following pro-inflammatory signals *via* an NF- $\kappa$ B-dependent mechanism that also involves HIF-1 activation [38]. Of further interest is that among the genes consistently perturbed by LSESr treatment, at least 7 were well-known transcriptional targets of NF- $\kappa$ B (*IL1B*, *IL1A*, *IL6*, *IL8*, *IL1RAP*, *PTGS2*, *NFKBIZ*). In many diseases and cell types, the nuclear factor of kappa beta (NF- $\kappa$ B) has been incriminated as a master regulator of biological processes especially cell growth, proliferation and inflammation [39, 40, 41]. Clearly, future studies should be performed to gain further insights into this effect.

BPH is defined by an exacerbated growth of stromal and epithelial cells of the prostate consecutive to alterations in cell proliferation, differentiation and apoptosis. Our data confirmed previous suggestions for the anti-proliferative and pro-apoptotic actions of LSESr [15, 17], and in a manner that seems closely related to an anti-inflammatory response in BPH cells. Interleukin-mediated growth of BPH cells was found to be affected by LSESr treatment. Inflammation may disrupt the intricate balance between cell growth and cell death homeostasis resulting in increased proliferation, and apoptosis reduction [3, 23, 31]. Thus, when testing new compounds in the setting of BPH, one should consider cross-modulations occurring between these 3 biological processes. Although, as yet unvalidated experimentally, our MicroArray analysis herein reveals that multiple metallothionein (MT) members were consistently upregulated in both the PrSF and BPH1 cells treated with LSESr (Table S1a-c). This could be especially relevant biologically since MTs proteins are assumed to regulate a number of cellular processes including gene expression, apoptosis, proliferation, differentiation and inflammation [42, 43]. Clearly, this finding gives reason to consider whether these factors might play a role in BPH or in the response to LSESr.

Collectively, our findings provide support for the view that the inflammatory response and proliferation/apoptosis pathways might be related in BPH pathogenesis, and LSESr interferes with these processes. Although promising, these findings remain to be clarified in the *in vivo* setting. Existing animal models could help in this respect [44, 45, 46]. To confirm the anti-inflammatory effect of the LSESr in BPH patients, it would also be necessary to collect prostatic tissue before and after treatment to perform the same microarray analysis. Such investigations are facing ethical concerns partly due to the invasiveness of the prostatic biopsies. As a surrogate, a placebo randomized clinical trial evaluating the effects of LSESr on non-invasive biomarkers could be proposed. Such clinical studies may suffer from the lack of non-invasive biomarkers for optimal patient stratification and monitoring of disease progression. Other than PSA, which seems specific for prostate tissue, but not for BPH, there is currently no reliable biomarker available for this disease. A few candidates are

promising such as C-reactive protein, IL6, and low sTNF-RII associated with increased risk of BPH [5, 29]. Interestingly, IL8 and CXCL6 appearing in this study were previously proposed as potential predictive markers of BPH [30, 31, 47]. Moreover, *PTGS2*, *TFRC*, *JUN*, *ILA*, *ILB*, *NFKBIZ*, *CDKN1B* and *GAS1*, although not considered as prostate specific genes, can all achieve substantial levels in BPH cells. This supports the need for further evaluation.

### 3. Experimental Section

#### *Cell culture*

Human hyperplastic cell line BPH1 was purchased from the German Collection of Microorganisms and Cell Cultures (DSMZ, Braunschweig, Germany). Cells were maintained in RPMI 1640 culture medium (Life Technologies, Cergy-Pontoise, France) enriched by 20% fetal bovine serum (FBS), 20 ng/mL testosterone, 1% insulin-transferrin-selenium, 100 units/mL penicillin and 100 µg/mL streptomycin.

Primary cultures of BPH stromal cells were obtained from surgical BPH tissues by collagenase digestion. Briefly, the prostatic tissue was washed with HBSS and diced into small pieces. The diced tissue was incubated for 6 hours at 37°C in MCDB131 medium (Life Technologies) containing 300U/mL collagenase (Roche Diagnostics, Mannheim, Germany), 50µg/mL DNase I (Roche Diagnostics), 0,03% pronase and 0,08% trypsin inhibitor (Sigma, St Louis, MO). After digestion, stromal fibroblasts/myofibroblasts were separated from epithelial cells by differential centrifugation. Supernatant enriched with stromal cells was then washed by HBSS and resuspended in MCDB131 supplemented with L-glutamine, penicillin/streptomycin, 2.5 µg/L fungizone, and 10% FBS. The separated cells, primary stromal fibroblasts (**PrSF**), were then incubated at 37°C in 5% CO<sub>2</sub>. The cells were serially passaged two to five times before being used in the experiments to eliminate any contamination by epithelial cells.

*Lipidosterolic extract of Serenoa repens*

Lipidosterolic extract of *Serenoa repens* (LSESr) (Permixon<sup>®</sup>, Pierre Fabre Médicament, Castres, France) was dissolved before use at 100 mg/mL in pure ethanol to obtain a homogeneous solution.

*Cell viability assay*

Cell viability was assessed by using 3-(4,5-Dimethylthiazol-2-yl)-2,5-diphenyl-2*H*-tetrazolium bromide (MTT) solution (Sigma-Aldrich, St Louis, MO, USA) to study the cytotoxicity of LSESr on both epithelial and stromal cell types. Briefly, cells were seeded in 96-well plates at a density of  $10^4$  cells/well. Twenty-four hours later, cells were treated with increasing concentrations of LSESr ranging from 10 to 200  $\mu\text{g/mL}$  and were incubated for 24 hours. MTT was added with a final concentration of 1 mg/mL and incubated for 2 hours at 37°C. MTT formazan crystals were dissolved in isopropanol and the optical density (OD) was measured at 540 nm wavelength using a microplate reader multiskan (Thermo Fisher Scientific, Waltham, MA). The cell viability was expressed as the percentage of the OD in cells with LSESr treatment versus untreated control. The 50% lethal concentration (LC50) of LSESr was determined from the obtained graphs as the concentration which reduced cell survival to 50%. The results were generated from three independent experiments and each experiment was performed in triplicate.

*Cell proliferation assay*

Proliferation assay using a BromodeoxyUridine (BrdU) Cell Proliferation Kit (Perkin Elmer, MA, USA) was performed to assess the effect of LSESr on proliferation index in both cell types. Cells were seeded in 96-well plates in 4 replicates at a density of  $10^4$  cells/well, allowed to attach for 24 hours. Then, cells were treated with various recombinant human interleukins: IL6, IL17, IL15 (purchased from R&D Systems (Minneapolis, MN)) and basic Fibroblast growth factor (bFGF) (kindly provided by Pr. Jean Delbé) for 24 hours at a final concentration of 10 ng/mL alone or in combination with LSESr. BrdU labeling solution was added to the treated cells and incubated for 18 hours. After

removal of the culture medium, the cells were fixed, permeabilized and the DNA was denatured. Anti-BrdU-Eu antibody solution was added and the signal was developed with tetramethyl-benzidine solution in darkness. Europium fluorescence emission was measured to determine the proliferation index of the cells using Wallac victor<sup>3</sup> 1420 Multilabel counter (Perkin-Elmer, 91945 Courtaboeuf, France).

#### *Microarray hybridization and analysis*

Epithelial and stromal cells of BPH were seeded in flasks. Twenty-four hours later, cells were treated with LSESr at a concentration equal to the 50% lethal concentration. Cells were then incubated for 1, 3 and 6 hours before RNA extraction. The experiments were performed in three replicates and untreated cells were used as control.

Total RNA was extracted from cell cultures using TRIzol reagent and Purelink RNA extraction kit (Life Technologies). RNA quality was assessed to have an RNA integrity number (RIN) of at least nine using an Agilent BioAnalyzer (Agilent Technologies, Santa Clara, CA). Total RNA was further purified and treated as described by the manufacturer of the microarrays (Affymetrix, Cleveland, OH, USA), and hybridized on Affymetrix GeneChip Human genome U133 Plus 2.0 Arrays.

Each microarray contained 54000 probe sets that included a total of 47000 genes. Target preparation, hybridization, and signal acquisition were done according to standard Affymetrix protocols. Each sample and hybridization underwent a quality control evaluation by using internal housekeeping genes (*beta-actin* and *GAPDH*), *poly-A* spike-in controls and the prokaryotic controls (*bioB*, *bioC*, *bioD* and *cre*). Quality control was considered good with a 3'/5' ratio of *beta-actin* and *GAPDH* expression were . The background subtraction, expression summary, and normalization of gene signals were carried out using the robust multi-array analysis (RMA) method. For further normalization and analysis the expression signals were transformed to log-scale. The log-expression values were normalized such that the average of expression of those genes expressed in all samples was identical. Expression Fold Change (FC) for indicated genes is expressed as differences between Log<sub>2</sub> normalized expression



(treated cells) and Log<sub>2</sub> normalized expression (untreated cells). Genes were filtered and analyzed using unsupervised hierarchical cluster analysis. Further processing included differential and functional analysis to identify the most significant biological processes and signaling pathways altered by LSESr treatment. For the differential analysis, the Benjamini and Yekutieli (BY) multiple comparison method was used to control the false discovery rate (FDR) in the analyses [48]. A p-value <0.05 after correction was considered significant. Gene Ontology (GO) was used to examine the common processes or underlying biological themes based on GSA (Gene Set analysis) and DAVID (<http://david.abcc.ncifcrf.gov/>). Comparison analysis of GO categories: Biological Processes, Molecular Functions and Cellular Components (<http://www.geneontology.org>) for each time point as compared to untreated control was expected to identify the differentially expressed genes within a biological context.

#### *Quantitative Real-Time PCR (RT-PCR)*

Five hundred nanograms (500ng) of total mRNA were processed to generate cDNA from random primers by reverse transcription using Superscript II (Life Technologies). RT-PCR was performed using SYBR green dye on an Applied Biosystems 7900 Real-time PCR system (Applied Biosystems, Foster City, CA). The following amplification conditions were used: 10 min at 94°C, followed by 40 cycles of 30 sec at 94°C and 30 sec at 60°C. The amount of each target gene related to the housekeeping gene Tata-binding protein (*TBP*) for each sample was determined using the comparative threshold cycle Ct method. The relative expression level of the target gene was calculated based on the difference in Ct values  $2^{(-\Delta\Delta Ct)}$ , between samples obtained from different treatment conditions and the reference sample representing untreated cells. Primer sequences are depicted in Supplementary Table S2. Data were expressed as mean values (SD) derived from duplicate within each of three separate experiments. For Comparisons between groups, Non-parametric tests were applied in order to assess for potential differences between control and treatment conditions. P values < 0.05 were considered

significant. Statistical tests were performed by using GraphPad Prism 4.0 software (GraphPad Software, La Jolla, CA).

#### **4. Conclusions**

By exploiting two *in vitro* cellular models of BPH, this study provided valuable insights into the potential anti-inflammatory role of LSESr in BPH management. At the same time, it continues to support the notion that inflammation is an important process in the pathogenesis of BPH. Further investigations are now necessary to determine the precise molecular basis of LSESr effects on inflammation in BPH. In addition, clinical studies using randomized, placebo-controlled, long-term trials are needed in order to test the anti-inflammatory effect of LSESr in human situation.

#### **Author contributions:**

N.S., F.V., A.D.T. designed research

N.S., V.F., G.R., A.D, and F.V. performed research

N.S., V.F., F.V., A.D.T. and S.T. analyzed data

N.S, G.R., and S.T. wrote the manuscript with input from all-coauthors

#### **Acknowledgments**

This work was supported by INSERM and Université Paris Est Creteil. We thank the “Institut de Recherche Pierre Fabre” (Toulouse, France) for providing lipidosterolic extract of *Serenoa repens* and advice all along this study.

#### **Conflict of Interest**

The authors declare no conflict of interest.

## References

1. Carter, H.B.; Coffey, D.S. The prostate: an increasing medical problem. *The Prostate* **1990**, *16*, 39-48.
2. Lee, K.L.; Peehl, D.M. Molecular and cellular pathogenesis of benign prostatic hyperplasia. *The Journal of urology* **2004**, *172*, 1784-1791.
3. Kramer, G.; Mitteregger, D.; Marberger, M. Is benign prostatic hyperplasia (BPH) an immune inflammatory disease? *European urology* **2007**, *51*, 1202-1216.
4. Robert, G.; Descazeaud, A.; Nicolaiew, N.; Terry, S.; Sirab, N.; Vacherot, F.; Maille, P.; Allory, Y.; de la Taille, A. Inflammation in benign prostatic hyperplasia: a 282 patients' immunohistochemical analysis. *The Prostate* **2009**, *69*, 1774-1780.
5. Schenk, J.M.; Kristal, A.R.; Neuhausser, M.L.; Tangen, C.M.; White, E.; Lin, D.W.; Thompson, I.M. Serum adiponectin, C-peptide and leptin and risk of symptomatic benign prostatic hyperplasia: results from the Prostate Cancer Prevention Trial. *The Prostate* **2009**, *69*, 1303-1311.
6. Hubner, G. [Inflammation of the hypertrophic prostate]. *Zeitschrift fur Urologie und Nephrologie* **1968**, *61*, 801-804.
7. Roehrborn, C.G. Combination medical therapy for lower urinary tract symptoms and benign prostatic hyperplasia. *Reviews in urology* **2005**, *7 Suppl 8*, S43-51.
8. Nickel, J.C.; Roehrborn, C.G.; O'Leary, M.P.; Bostwick, D.G.; Somerville, M.C.; Rittmaster, R.S. The relationship between prostate inflammation and lower urinary tract symptoms: examination of baseline data from the REDUCE trial. *European urology* **2008**, *54*, 1379-1384.
9. Minnery, C.H.; Getzenberg, R.H. Benign prostatic hyperplasia cell line viability and modulation of jm-27 by doxazosin and Ibuprofen. *The Journal of urology* **2005**, *174*, 375-379.
10. Falahatkar, S.; Mokhtari, G.; Pourreza, F.; Asgari, S.A.; Kamran, A.N. Celecoxib for treatment of nocturia caused by benign prostatic hyperplasia: a prospective, randomized, double-blind, placebo-controlled study. *Urology* **2008**, *72*, 813-816.
11. Raynaud, J.P.; Cousse, H.; Martin, P.M. Inhibition of type 1 and type 2 5alpha-reductase activity by free fatty acids, active ingredients of Permixon. *The Journal of steroid biochemistry and molecular biology* **2002**, *82*, 233-239.
12. Bayne, C.W.; Donnelly, F.; Ross, M.; Habib, F.K. Serenoa repens (Permixon): a 5alpha-reductase types I and II inhibitor-new evidence in a coculture model of BPH. *The Prostate* **1999**, *40*, 232-241.
13. Di Silverio, F.; Monti, S.; Sciarra, A.; Varasano, P.A.; Martini, C.; Lanzara, S.; D'Eramo, G.; Di Nicola, S.; Toscano, V. Effects of long-term treatment with Serenoa repens (Permixon) on the concentrations and regional distribution of androgens and epidermal growth factor in benign prostatic hyperplasia. *The Prostate* **1998**, *37*, 77-83.
14. Di Silverio, F.; D'Eramo, G.; Lubrano, C.; Flammia, G.P.; Sciarra, A.; Palma, E.; Caponera, M.; Sciarra, F. Evidence that Serenoa repens extract displays an antiestrogenic activity in prostatic tissue of benign prostatic hypertrophy patients. *European urology* **1992**, *21*, 309-314.
15. Vacherot, F.; Azzouz, M.; Gil-Diez-De-Medina, S.; Colombel, M.; De La Taille, A.; Lefrere Belda, M.A.; Abbou, C.C.; Raynaud, J.P.; Chopin, D.K. Induction of apoptosis and inhibition of cell proliferation by the lipido-sterolic extract of Serenoa repens (LSESr, Permixon) in benign prostatic hyperplasia. *The Prostate* **2000**, *45*, 259-266.
16. Paubert-Braquet, M.; Cousse, H.; Raynaud, J.P.; Mencia-Huerta, J.M.; Braquet, P. Effect of the lipidosterolic extract of Serenoa repens (Permixon) and its major components on basic

- fibroblast growth factor-induced proliferation of cultures of human prostate biopsies. *European urology* **1998**, *33*, 340-347.
17. Vela-Navarrete, R.; Escribano-Burgos, M.; Farre, A.L.; Garcia-Cardoso, J.; Manzarbeitia, F.; Carrasco, C. Serenoa repens treatment modifies bax/bcl-2 index expression and caspase-3 activity in prostatic tissue from patients with benign prostatic hyperplasia. *The Journal of urology* **2005**, *173*, 507-510.
  18. Paubert-Braquet, M.; Mencia Huerta, J.M.; Cousse, H.; Braquet, P. Effect of the lipidic lipidosterolic extract of Serenoa repens (Permixon) on the ionophore A23187-stimulated production of leukotriene B4 (LTB4) from human polymorphonuclear neutrophils. *Prostaglandins, leukotrienes, and essential fatty acids* **1997**, *57*, 299-304.
  19. Bonvissuto, G.; Minutoli, L.; Morgia, G.; Bitto, A.; Polito, F.; Irrera, N.; Marini, H.; Squadrito, F.; Altavilla, D. Effect of Serenoa repens, lycopene, and selenium on proinflammatory phenotype activation: an in vitro and in vivo comparison study. *Urology* **2011**, *77*, 248 e249-216.
  20. Latil, A.; Libon, C.; Templier, M.; Junquero, D.; Lantoine-Adam, F.; Nguyen, T. Hexanic lipidosterolic extract of Serenoa repens inhibits the expression of two key inflammatory mediators, MCP-1/CCL2 and VCAM-1, in vitro. *BJU international* **2012**, *110*, E301-307.
  21. Vela Navarrete, R.; Garcia Cardoso, J.V.; Barat, A.; Manzarbeitia, F.; Lopez Farre, A. BPH and inflammation: pharmacological effects of Permixon on histological and molecular inflammatory markers. Results of a double blind pilot clinical assay. *European urology* **2003**, *44*, 549-555.
  22. Subramanian, A.; Tamayo, P.; Mootha, V.K.; Mukherjee, S.; Ebert, B.L.; Gillette, M.A.; Paulovich, A.; Pomeroy, S.L.; Golub, T.R.; Lander, E.S.; Mesirov, J.P. Gene set enrichment analysis: a knowledge-based approach for interpreting genome-wide expression profiles. *Proceedings of the National Academy of Sciences of the United States of America* **2005**, *102*, 15545-15550.
  23. Bostanci, Y.; Kazzazi, A.; Momtahn, S.; Laze, J.; Djavan, B. Correlation between benign prostatic hyperplasia and inflammation. *Current opinion in urology* **2013**, *23*, 5-10.
  24. Di Silverio, F.; Bosman, C.; Salvatori, M.; Albanesi, L.; Proietti Pannunzi, L.; Ciccariello, M.; Cardi, A.; Salvatori, G.; Sciarra, A. Combination therapy with rofecoxib and finasteride in the treatment of men with lower urinary tract symptoms (LUTS) and benign prostatic hyperplasia (BPH). *European urology* **2005**, *47*, 72-78; discussion 78-79.
  25. Addla, S.K.; Adeyoju, A.B.; Neilson, D.; O'Reilly, P. Diclofenac for treatment of nocturia caused by nocturnal polyuria: a prospective, randomised, double-blind, placebo-controlled crossover study. *European urology* **2006**, *49*, 720-725.
  26. Vela Navarrete, R.; Garcia Cardoso, J.; Barat, A.; Manzarbeitia, F.; Lopez Farre, A. Effects of the lipido-sterolic extract of Serenoa repens (Permixon) on infiltrating cells and inflammatory markers in prostatic tissues from BPH patients. *European urology* **2002**, *62*.
  27. Steiner, G.E.; Newman, M.E.; Paikl, D.; Stix, U.; Memaran-Dagda, N.; Lee, C.; Marberger, M.J. Expression and function of pro-inflammatory interleukin IL-17 and IL-17 receptor in normal, benign hyperplastic, and malignant prostate. *The Prostate* **2003**, *56*, 171-182.
  28. Liu, L.; Li, Q.; Han, P.; Li, X.; Zeng, H.; Zhu, Y.; Wei, Q. Evaluation of interleukin-8 in expressed prostatic secretion as a reliable biomarker of inflammation in benign prostatic hyperplasia. *Urology* **2009**, *74*, 340-344.
  29. Schenk, J.M.; Kristal, A.R.; Neuhausser, M.L.; Tangen, C.M.; White, E.; Lin, D.W.; Kratz, M.; Thompson, I.M. Biomarkers of systemic inflammation and risk of incident, symptomatic benign prostatic hyperplasia: results from the prostate cancer prevention trial. *American journal of epidemiology* **2010**, *171*, 571-582.
  30. Penna, G.; Mondaini, N.; Amuchastegui, S.; Degli Innocenti, S.; Carini, M.; Giubilei, G.; Fibbi, B.; Colli, E.; Maggi, M.; Adorini, L. Seminal plasma cytokines and chemokines in prostate inflammation: interleukin 8 as a predictive biomarker in chronic prostatitis/chronic pelvic pain

- syndrome and benign prostatic hyperplasia. *European urology* **2007**, *51*, 524-533; discussion 533.
31. Begley, L.A.; Kasina, S.; MacDonald, J.; Macoska, J.A. The inflammatory microenvironment of the aging prostate facilitates cellular proliferation and hypertrophy. *Cytokine* **2008**, *43*, 194-199.
  32. Ryschich, E.; Huszty, G.; Knaebel, H.P.; Hartel, M.; Buchler, M.W.; Schmidt, J. Transferrin receptor is a marker of malignant phenotype in human pancreatic cancer and in neuroendocrine carcinoma of the pancreas. *Eur J Cancer* **2004**, *40*, 1418-1422.
  33. O'Donnell, K.A.; Yu, D.; Zeller, K.I.; Kim, J.W.; Racke, F.; Thomas-Tikhonenko, A.; Dang, C.V. Activation of transferrin receptor 1 by c-Myc enhances cellular proliferation and tumorigenesis. *Molecular and cellular biology* **2006**, *26*, 2373-2386.
  34. Wada, S.; Noguchi, T.; Takeno, S.; Kawahara, K. PIK3CA and TFRC located in 3q are new prognostic factors in esophageal squamous cell carcinoma. *Annals of surgical oncology* **2006**, *13*, 961-966.
  35. Song, J.Y.; Lee, J.K.; Lee, N.W.; Jung, H.H.; Kim, S.H.; Lee, K.W. Microarray analysis of normal cervix, carcinoma in situ, and invasive cervical cancer: identification of candidate genes in pathogenesis of invasion in cervical cancer. *International journal of gynecological cancer : official journal of the International Gynecological Cancer Society* **2008**, *18*, 1051-1059.
  36. Schlomm, T.; Hellwinkel, O.J.; Bunn, A.; Ruschhaupt, M.; Lubke, A.M.; Chun, F.K.; Simon, R.; Budaus, L.; Erbersdobler, A.; Graefen, M.; Huland, H.; Poustka, A.; Sultmann, H. Molecular cancer phenotype in normal prostate tissue. *European urology* **2009**, *55*, 885-890.
  37. Essaghir, A.; Demoulin, J.B. A minimal connected network of transcription factors regulated in human tumors and its application to the quest for universal cancer biomarkers. *PloS one* **2012**, *7*, e39666.
  38. Tacchini, L.; Gammella, E.; De Ponti, C.; Recalcati, S.; Cairo, G. Role of HIF-1 and NF-kappaB transcription factors in the modulation of transferrin receptor by inflammatory and anti-inflammatory signals. *The Journal of biological chemistry* **2008**, *283*, 20674-20686.
  39. DiDonato, J.A.; Mercurio, F.; Karin, M. NF-kappaB and the link between inflammation and cancer. *Immunological reviews* **2012**, *246*, 379-400.
  40. Pasparakis, M. Role of NF-kappaB in epithelial biology. *Immunological reviews* **2012**, *246*, 346-358.
  41. Paule, B.; Terry, S.; Kheuang, L.; Soyeux, P.; Vacherot, F.; de la Taille, A. The NF-kappaB/IL-6 pathway in metastatic androgen-independent prostate cancer: new therapeutic approaches? *World journal of urology* **2007**, *25*, 477-489.
  42. Blindauer, C.A.; Leszczyszyn, O.I. Metallothioneins: unparalleled diversity in structures and functions for metal ion homeostasis and more. *Natural product reports* **2010**, *27*, 720-741.
  43. Swindell, W.R. Metallothionein and the biology of aging. *Ageing research reviews* **2011**, *10*, 132-145.
  44. Paubert-Braquet, M.; Richardson, F.O.; Servent-Saez, N.; Gordon, W.C.; Monge, M.C.; Bazan, N.G.; Authie, D.; Braquet, P. Effect of *Serenoa repens* extract (Permixon) on estradiol/testosterone-induced experimental prostate enlargement in the rat. *Pharmacological research : the official journal of the Italian Pharmacological Society* **1996**, *34*, 171-179.
  45. Kim, J.; Yanagihara, Y.; Kikugawa, T.; Ji, M.; Tanji, N.; Masayoshi, Y.; Freeman, M.R. A signaling network in phenylephrine-induced benign prostatic hyperplasia. *Endocrinology* **2009**, *150*, 3576-3583.
  46. Rick, F.G.; Schally, A.V.; Block, N.L.; Nadji, M.; Szepeshazi, K.; Zarandi, M.; Vidaurre, I.; Perez, R.; Halmos, G.; Szalontay, L. Antagonists of growth hormone-releasing hormone (GHRH) reduce prostate size in experimental benign prostatic hyperplasia. *Proceedings of the National Academy of Sciences of the United States of America* **2011**, *108*, 3755-3760.

47. Castro, P.; Xia, C.; Gomez, L.; Lamb, D.J.; Ittmann, M. Interleukin-8 expression is increased in senescent prostatic epithelial cells and promotes the development of benign prostatic hyperplasia. *The Prostate* **2004**, *60*, 153-159.
48. Reiner, A.; Yekutieli, D.; Benjamini, Y. Identifying differentially expressed genes using false discovery rate controlling procedures. *Bioinformatics* **2003**, *19*, 368-375.