



HAL
open science

Hyposplenism revealed by *Plasmodium malariae* infection.

Benjamin Hommel, Alexandre Galloula, Anne Simon, Pierre Buffet

► **To cite this version:**

Benjamin Hommel, Alexandre Galloula, Anne Simon, Pierre Buffet. Hyposplenism revealed by *Plasmodium malariae* infection.. *Malaria Journal*, 2013, 12 (1), pp.271. <10.1186/1475-2875-12-271>. <inserm-00853146>

HAL Id: inserm-00853146

<https://inserm.hal.science/inserm-00853146v1>

Submitted on 22 Aug 2013

HAL is a multi-disciplinary open access archive for the deposit and dissemination of scientific research documents, whether they are published or not. The documents may come from teaching and research institutions in France or abroad, or from public or private research centers.

L'archive ouverte pluridisciplinaire **HAL**, est destinée au dépôt et à la diffusion de documents scientifiques de niveau recherche, publiés ou non, émanant des établissements d'enseignement et de recherche français ou étrangers, des laboratoires publics ou privés.



HAL Authorization

CASE REPORT

Open Access

Hyposplenism revealed by *Plasmodium malariae* infection

Benjamin Hommel^{1*}, Alexandre Galloula², Anne Simon² and Pierre Buffet^{1,3}

Abstract

Background: Hyposplenism, due to splenectomy, inherited red blood cell disorders or acquired conditions such as celiac disease, has an important impact on the severity of malaria, especially in non-immune patients. Conversely, that malaria may reveal functional hyposplenism has not been described previously.

Methods: A 31-year old gardener was diagnosed with an uncomplicated attack of *Plasmodium malariae* 11 years after leaving the endemic area. In addition to trophozoites and schizonts, thick and thin smears also showed Howell-Jolly bodies, pointing to functional hyposplenism. This was later confirmed by the presence of a calcified spleen in the context of S/β + sickle-cell syndrome in a patient previously unaware of this condition.

Conclusion: Malaria may reveal hyposplenism. Although Howell-Jolly bodies are morphologically similar to nuclei of young *Plasmodium* trophozoite, distinction on smears is based on the absence of cytoplasm and irregular size of Howell-Jolly bodies. In the patient reported here, hyposplenism was revealed by the occurrence of *P. malariae* infection relatively late in life. Timely diagnosis of hyposplenism resulted in the implementation of appropriate measures to prevent overwhelming infection with capsulated bacteria. This observation highlights the importance of diagnosing hyposplenism in patients with malaria despite the morphological similarities between ring nuclei and Howell-Jolly bodies on thick smears.

Keywords: Hyposplenism, *Plasmodium malariae*, Howell Jolly bodies, Sickle cell syndrome, Malaria

Background

Hyposplenism corresponds to the impairment of splenic function. This is a serious condition because the spleen plays a major role in immunological and mechanical defences against infections. Diagnosis of spleen dysfunction is based on the measure of its filtering function. The gold standard is the measure of phagocytosis of colloid particles in the spleen using radioisotopic methods. However, quantification of morphological alterations or deformability [1] of circulating red blood cells is a more practical marker [2]. Howell-Jolly bodies are small nuclear remnants from erythroblasts that cannot be removed from red blood cells if the spleen is absent. In sickle cell disease, there is a strong correlation [3] between the number of red blood cells harbouring Howell-Jolly bodies, or the number of “pitted cells” (i.e., red blood cells containing small vesicles)

in circulation and the intensity of functional hyposplenism. In *Plasmodium* infections, the spleen contributes to innate resistance and limits the magnitude of parasitaemia. This is particularly well established in *Plasmodium falciparum* infection [4]. For other species, such as *Plasmodium malariae*, the influence of hyposplenism on the outcome of infection is poorly documented. Here, is the clinical history report of a patient in whom chronic infection with *P. malariae* (11 years after leaving the endemic area) revealed functional hyposplenism and a major sickle cell syndrome.

Methods

A 31-year-old gardener was admitted to an emergency department in December 2010. He had moved from Mali to France in 1999 and had never travelled back to Africa or to any tropical country. The patient had a surgical history of inguinal abscess. He had no medication, smoked tobacco for 14 years and did not drink alcohol. Between 2006 and 2009, he experienced episodes of chronic fever and asthenia. On physical examination the patient was febrile with a temperature of 39°C had a 119-beat per

* Correspondence: benjaminhommel@hotmail.fr

¹Parasitology-Mycology Laboratory, Assistance Publique Hôpitaux de Paris, Groupe Hospitalier Pitié-Salpêtrière, 47 Boulevard de l'Hôpital, 75651, Paris, Cedex 13, France

Full list of author information is available at the end of the article

minute pulse and a blood pressure of 147/97 mmHg. He reported headache, myalgia and lumbar pain. The rest of physical examination was normal.

The patient was admitted to the internal medicine department. He mentioned repeated flu-like syndromes in the previous three months and recent episodes of rhythmic fever occurring once every three days. At admission, physical examination was unremarkable and main laboratory parameters were: leucocytosis, white blood cells $11.9 \times 10^9/l$ N (4.0-10.0), microcytic anaemia with haemoglobin 11.5 g/dl N (13.0-17.5) and mean corpuscular volume 72 fl N (80-100), platelets $252 \times 10^9/l$ N (150-400), creatinaemia 81 $\mu\text{mol/l}$ N (62-106), and inflammatory syndrome with C-reactive protein 33 mg/l N (<5) and ferritinaemia 2,020 $\mu\text{g/l}$ N (30-300).

Thin and thick smears were performed from venous blood. The rosette-like aspect of a schizont (Figure 1A), the small size of the erythrocyte-hosting gametocytes on the thin smear (Figure 1B) and the absence of Maurer or Schüffner dots were highly suggestive of *P. malariae* infection, latter confirmed by a positive polymerase chain reaction with primers specific for *P. malariae* [5]. This diagnosis was consistent with the very long incubation period and the rhythm of fever.

Initially, the small, round, purple bodies on the thick smear were interpreted as the nuclei of young trophozoites (rings), thereby strengthening the diagnosis. However, the absence of cytoplasm in contact with these bodies and their markedly variable size contradicted this interpretation. Study of the thin smear confirmed that the bodies

corresponded instead to typical Howell-Jolly bodies [6-8]. The thin smear also showed morphological abnormalities of red cells: microcytosis, anisochromasia, target cells and schistocytes, raising the hypothesis of an associated haemoglobin disorder. Liquid chromatography of haemoglobin revealed a S/ β + sickle cell syndrome (HbS 60% and heterozygous beta thalassaemia β + with HbA2 6.5% HbF 6.1%) [9].

The patient had no abdominal surgery scars. Due to the presence of Howell-Jolly bodies and the S/ β + sickle cell syndrome, a computed tomography scan of the abdominal region was performed and showed an atrophic calcified spleen (Figure 2).

The malaria attack resolved rapidly with a three-day course of oral chloroquine. Clinical and laboratory markers returned to normal in one week. The patient was discharged after being vaccinated for encapsulated bacteria (*Streptococcus pneumoniae*, *Haemophilus influenzae* and *Neisseria meningitidis*) and provided with long-term oral beta-lactams to prevent potential complications of asplenia [10]. Malaria prophylaxis was recommended in case of travel to Africa.

Conclusion

In patients with sickle cell anaemia, repeated sequestration crises leading to infarctions generally result in early splenic atrophy with calcifications [11]. This evolution is almost constant in adult patients with homozygous sickle cell disease but is less frequent in patients with the S/ β + sickle cell syndrome [11]. Progressive hyposplenism and

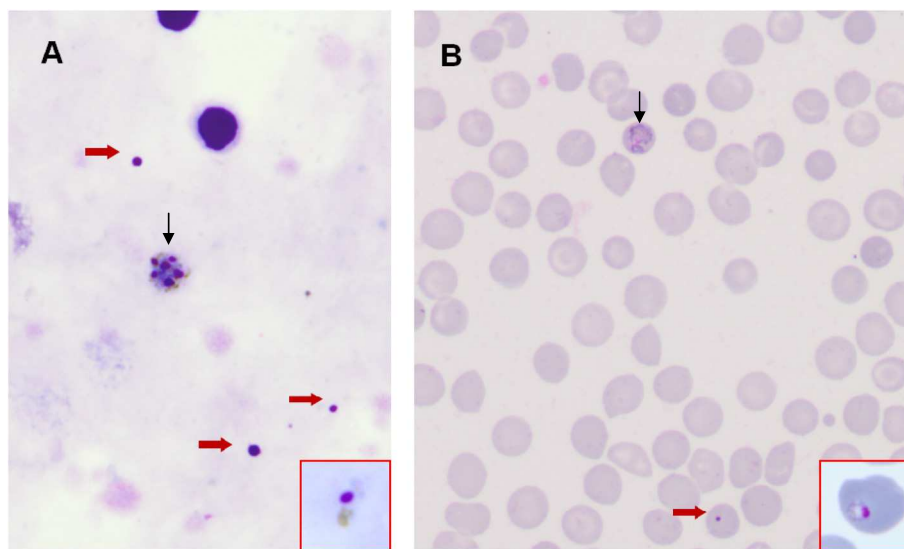


Figure 1 Diagnosis of *Plasmodium malariae* infection and presence of Howell-Jolly bodies. Thick (A) and thin (B) smear at admission (original magnification $\times 1000$, Giemsa -R staining). In red squares, a sample of *P. malariae* rings showing morphological similarities between ring nuclei and Howell-Jolly bodies. The absence of cytoplasm is key for the differential diagnosis. **A.** Two leukocyte nuclei, the rosette-like aspect (vertical arrow) of the schizont (*Plasmodium malariae*), and several Howell-Jolly bodies (red arrows). **B.** Small size of the erythrocyte hosting a *P. malariae* gametocyte (vertical arrow) and uninfected red blood cells showing microcytosis, anisochromasia, and target aspect.

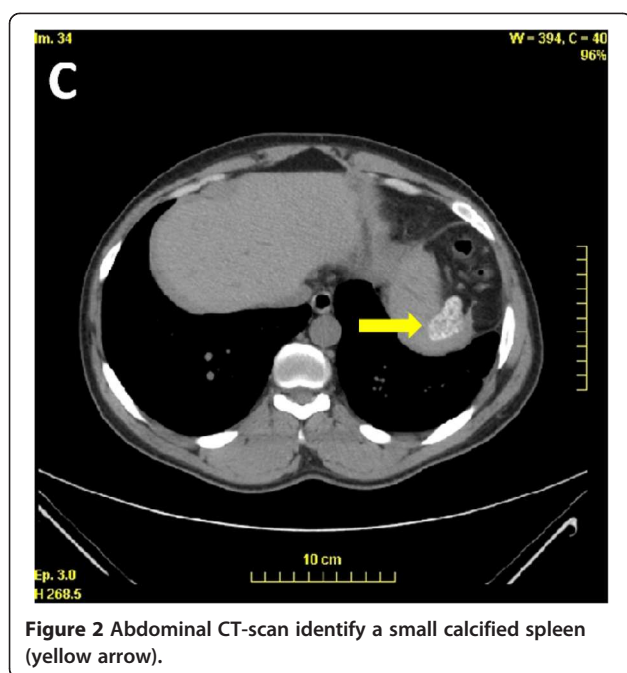


Figure 2 Abdominal CT-scan identify a small calcified spleen (yellow arrow).

splenic atrophy in this patient were revealed by a malaria episode, and occurred relatively late in life. Sickle cell trait, i.e., the heterozygote form, is protective against severe and fatal *P. falciparum* infections [12], whereas in homozygosity, protection against severe malaria is counterbalanced by hyposplenism which appears during childhood [13,14]. This observation suggests the existence of a similarly balanced influence of the presence of HbS on the evolution of infection with *P. malariae*.

Much less is known on the impact of anatomical or functional hyposplenism on the course of infections with *Plasmodium vivax*, *Plasmodium ovale*, *Plasmodium knowlesi* and *P. malariae* than on the more frequent *P. falciparum* [8,15]. Indeed, *P. falciparum* infection is more frequently severe and fatal in non-immune splenectomized patients [4,8]. *Plasmodium malariae* infection can be severe in patients with splenectomy or functional asplenia [16-18]. Here the patient experienced only mild symptoms. It is assumed that in *P. malariae* as observed with *P. falciparum* patients who acquired immunity before becoming asplenic, uncomplicated attacks are more frequent than severe malaria [4].

Presence of Howell-Jolly bodies on a blood sample is a fairly specific indicator of hyposplenism [19,20]. In this patient their presence on the thick/thin smear was due to sickle cell anaemia but presence of Howell-Jolly bodies is also associated with several diseases: bone marrow transplantation (40%), celiac disease (33-76%), HIV infection/AIDS 36 (%), alcoholic liver disease (37-100%) and systemic lupus erythematosus (7.5%) [2]. The prevalence of hyposplenism is generally underestimated and the diagnosis often overlooked. This has potentially severe

consequences in infectious diseases in general, and in malaria in particular. Detecting hyposplenism can thus be life-saving as it triggers the adoption of appropriate preventive measures against overwhelming infections [2].

This observation highlights the importance of diagnosing hyposplenism in patients with malaria despite the morphological similarities between ring nuclei and Howell-Jolly bodies on thick smears.

Consent

Consent was granted by patient for the publication of this case report.

Competing interests

PB is supported by the Bill & Melinda Gates Foundation and SANOFI. BH, AS and AG declare that they have no competing interests.

Authors' contributions

BH and PB wrote the manuscript with contribution of AS. AG made the diagnosis. AG and AS were responsible for the patient's care and treatment and reviewed the manuscript. PB and BH made the microbiological diagnosis. All authors read and approved the final manuscript.

Author details

¹Parasitology-Myecology Laboratory, Assistance Publique Hôpitaux de Paris, Groupe Hospitalier Pitié-Salpêtrière, 47 Boulevard de l'Hôpital, 75651, Paris, Cedex 13, France. ²Hôpital Pitié-Salpêtrière, Service de Médecine Interne, Boulevard de l'hôpital, 75651, Paris, Cedex 13, France. ³INSERM, UMR-S 945, Paris, France.

Received: 25 May 2013 Accepted: 7 July 2013

Published: 2 August 2013

References

1. Prendki V, Ndour PA, Jais X, Ciceron L, Settegrana C, Buffet P: **Reduced deformability of circulating erythrocytes: a marker of hyposplenism.** *Am J Hematol* 2012, **87**:E81-E82.
2. Di Sabatino A, Carsetti R, Corazza GR: **Post-splenectomy and hyposplenic states.** *Lancet* 2011, **378**:86-97.
3. Rogers ZR, Wang WC, Luo Z, Iyer RV, Shalaby-Rana E, Dertinger SD, Shulkin BL, Miller JH, Files B, Lane PA, Thompson BW, Miller ST, Ware RE: **BABY HUG: Biomarkers of splenic function in infants with sickle cell anemia: baseline data from the BABY HUG Trial.** *Blood* 2011, **117**:2614-2617.
4. Bach O, Baier M, Pullwitt A, Fosiko N, Chagaluka G, Kalima M, Pfister W, Straube E, Molyneux M: **Falciparum malaria after splenectomy: a prospective controlled study of 33 previously splenectomized Malawian adults.** *Trans R Soc Trop Med Hyg* 2005, **99**:861-867.
5. Snounou G: **Detection and identification of the four malaria parasite species infecting humans by PCR amplification.** *Methods Mol Biol* 1996, **50**:263-291.
6. Schnitzer B, Sodeman T, Mead ML, Contacos PG: **Pitting function of the spleen in malaria: ultrastructural observations.** *Science* 1972, **177**:175-177.
7. Robertson DA, Bullen AW, Hall R, Losowsky MS: **Blood film appearances in the hyposplenism of coeliac disease.** *Br J Clin Pract* 1983, **37**:19-22.
8. Buffet PA, Safeukui I, Deplaine G, Brousse V, Prendki V, Thellier M, Turner GD, Mercereau-Pujalon O: **The pathogenesis of Plasmodium falciparum malaria in humans: insights from splenic physiology.** *Blood* 2011, **117**:381-392.
9. Weatherall DJ: **Genetic variation and susceptibility to infection: the red cell and malaria.** *Br J Haematol* 2008, **141**:276-286.
10. Davidson RN, Wall RA: **Prevention and management of infections in patients without a spleen.** *Clin Microbiol Infect* 2001, **7**:657-660.
11. Ozgen A, Akata D, Arat A, Ozdogan M, Akhan O, Ozmen MN: **Splenic calcifications in heterozygote sickle cell patients.** *Abdom Imaging* 1999, **24**:188-190.
12. Williams TN, Mwangi TW, Wambua S, Peto TE, Weatherall DJ, Gupta S, Recker M, Penman BS, Uyoga S, Macharia A, Mwacharo JK, Snow RW, Marsh K: **Negative epistasis between the malaria-protective effects of alpha + -thalassemia and the sickle cell trait.** *Nat Genet* 2005, **37**:1253-1257.

13. Komba AN, Makani J, Sadarangani M, Ajala-Agbo T, Berkley JA, Newton CR, Marsh K, Williams TN: **Malaria as a cause of morbidity and mortality in children with homozygous sickle cell disease on the coast of Kenya.** *Clin Infect Dis* 2009, **49**:216–222.
14. Pearson HA, McIntosh S, Ritchey AK, Lobel JS, Rooks Y, Johnston D: **Developmental aspects of splenic function in sickle cell diseases.** *Blood* 1979, **53**:358–365.
15. Luzzatto L: **Sickle cell anaemia and malaria.** *Mediterr J Hematol Infect Dis* 2012, **4**:e2012065.
16. Petersen E, Hogh B, Marbiah NT, Hanson AP: **The effect of splenectomy on immunity to *Plasmodium malariae* and *P. falciparum* in a malaria immune donor.** *Trop Med Parasitol* 1992, **43**:68–69.
17. Tapper ML, Armstrong D: **Malaria complicating neoplastic disease.** *Arch Intern Med* 1976, **136**:807–810.
18. Toma E: **Malaria in splenectomized patients.** *Clin Infect Dis* 1993, **17**:936–937.
19. Groom AC, Schmidt EE, MacDonald IC: **Microcirculatory pathways and blood flow in spleen: new insights from washout kinetics, corrosion casts, and quantitative intravital videomicroscopy.** *Scanning Microsc* 1991, **5**:159–173. discussion 173–154.
20. Grover R, Wethers DL: **Spleen dysfunction in hemoglobinopathies determined by pitted red cells.** *Am J Pediatr Hematol Oncol* 1988, **10**:340–343.

doi:10.1186/1475-2875-12-271

Cite this article as: Hommel *et al.*: Hyposplenism revealed by *Plasmodium malariae* infection. *Malaria Journal* 2013 **12**:271.

Submit your next manuscript to BioMed Central and take full advantage of:

- Convenient online submission
- Thorough peer review
- No space constraints or color figure charges
- Immediate publication on acceptance
- Inclusion in PubMed, CAS, Scopus and Google Scholar
- Research which is freely available for redistribution

Submit your manuscript at
www.biomedcentral.com/submit

