



On the spatiotemporal dynamics and couplings across epileptogenic networks

Timothée Proix, Viktor Jirsa

► To cite this version:

Timothée Proix, Viktor Jirsa. On the spatiotemporal dynamics and couplings across epileptogenic networks. the Twenty Second Annual Computational Neuroscience Meeting: CNS*2013, Jul 2013, paris, France. pp.P196. inserm-00842301

HAL Id: inserm-00842301

<https://inserm.hal.science/inserm-00842301>

Submitted on 8 Jul 2013

HAL is a multi-disciplinary open access archive for the deposit and dissemination of scientific research documents, whether they are published or not. The documents may come from teaching and research institutions in France or abroad, or from public or private research centers.

L'archive ouverte pluridisciplinaire **HAL**, est destinée au dépôt et à la diffusion de documents scientifiques de niveau recherche, publiés ou non, émanant des établissements d'enseignement et de recherche français ou étrangers, des laboratoires publics ou privés.

POSTER PRESENTATION

Open Access

On the spatiotemporal dynamics and couplings across epileptogenic networks

Timothée Proix*, Viktor Jirsa

From Twenty Second Annual Computational Neuroscience Meeting: CNS*2013
 Paris, France. 13-18 July 2013

For patients with partial epilepsy, one or several brain regions generate seizures ('epileptogenic zone' [1]), which may recruit other regions that are themselves non-epileptogenic. For these patients, the epileptogenic zone can sometimes be surgically removed and thus must be precisely delineated using intracranial EEG, giving us a deeper insight into the spatiotemporal dynamic of the seizure.

Intracranial EEG times series show that brain regions and seizures may display a large variability in dynamics: (i) some seizures recruit more brain regions than others,

(ii) the delays between the onset of the seizure in the epileptogenic zone and other areas can change on a time scale of several seconds, (iii) recruited areas exhibit different levels of coherence with the epileptogenic zone according to their position.

Here we propose a model able to reproduce these 3 features (for other macroscopic models of seizures see [2,3]). Our network model comprises two neural masses autonomously able to produce epileptic seizure. We symmetrically coupled two of these neural mass models on a slow time scale (several seconds) and studied

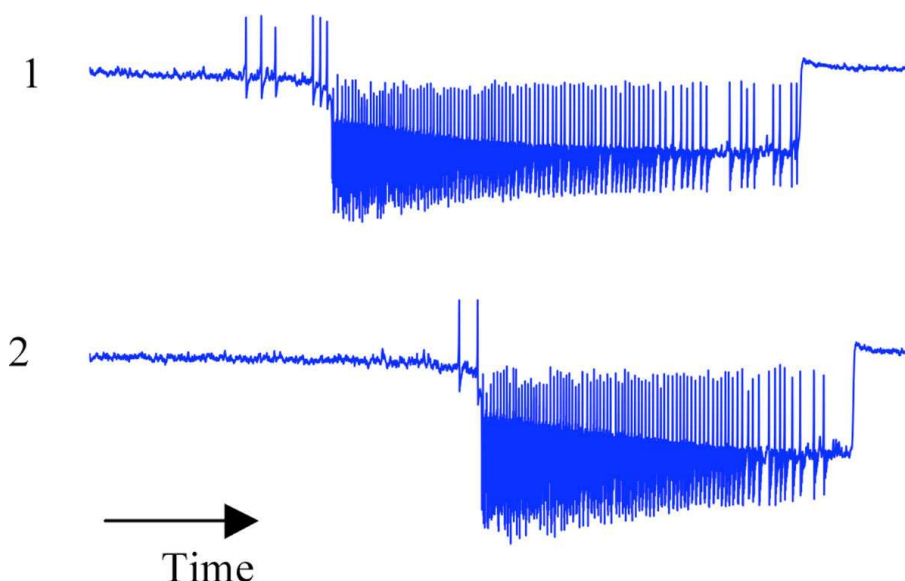


Figure 1 Simultaneous times series of two coupled neural masses. The neural mass 1 starts first the seizure and then recruits the neural mass 2.

* Correspondence: timothee.proix@etu.univ-amu.fr
 Institut de neuroscience des systèmes, Inserm UMR 1106, 13005 Marseille, France

systematically the effect of two parameters : the epileptogenicity of the neural masses and the coupling values between neural masses. By choosing specific values of these parameters, we reproduce each of the features above (see Figure 1). We mathematically reduced the network model to uncover the essential mechanisms underlying a coupling acting on a slow time scale.

Acknowledgements

This research has been supported by the James S. McDonnell Foundation.

Published: 8 July 2013

References

1. Bartolomei F, Guye M, Gavaret M, Regis J, Wendling F, Raybaud C, Chauvel P: **The presurgical evaluation of epilepsies.** *Rev Neurol (Paris)* 2002, **158**(Pt 2):4555-4564.
2. Wendling F, Bartolomei F, Bellanger F, Chauvel P: **Epileptic fast activity can be explained by a model of impaired GABAergic dendritic inhibition.** *Eur J Neurosci* 2002, **15**:1499-508.
3. Suffczynski P, Kalitzin S N, Lopes Da Silva F H: **Dynamics of non-convulsive epileptic phenomena modeled by a bistable neuronal network.** *Neuroscience*. 2004, **126**(2):467-484.

doi:10.1186/1471-2202-14-S1-P196

Cite this article as: Proix and Jirsa: On the spatiotemporal dynamics and couplings across epileptogenic networks. *BMC Neuroscience* 2013 **14** (Suppl 1):P196.

Submit your next manuscript to BioMed Central and take full advantage of:

- Convenient online submission
- Thorough peer review
- No space constraints or color figure charges
- Immediate publication on acceptance
- Inclusion in PubMed, CAS, Scopus and Google Scholar
- Research which is freely available for redistribution

Submit your manuscript at
www.biomedcentral.com/submit

