



Limoniastrum guyonianum aqueous gall extract induces apoptosis in human cervical cancer cells involving p16INK4A re-expression related to UHRF1 and DNMT1 down-regulation.

Mounira Krifa, Mahmoud Alhosin, Christian Muller, Jean-Pierre Gies, Leila Chekir-Ghedira, Kamel Ghedira, Yves Mély, Christian Bronner, Marc Mousli

► To cite this version:

Mounira Krifa, Mahmoud Alhosin, Christian Muller, Jean-Pierre Gies, Leila Chekir-Ghedira, et al.. Limoniastrum guyonianum aqueous gall extract induces apoptosis in human cervical cancer cells involving p16INK4A re-expression related to UHRF1 and DNMT1 down-regulation.. Journal of Experimental and Clinical Cancer Research, 2013, 32 (1), pp.30. 10.1186/1756-9966-32-30 . inserm-00839325

HAL Id: inserm-00839325

<https://inserm.hal.science/inserm-00839325>

Submitted on 27 Jun 2013

HAL is a multi-disciplinary open access archive for the deposit and dissemination of scientific research documents, whether they are published or not. The documents may come from teaching and research institutions in France or abroad, or from public or private research centers.

L'archive ouverte pluridisciplinaire **HAL**, est destinée au dépôt et à la diffusion de documents scientifiques de niveau recherche, publiés ou non, émanant des établissements d'enseignement et de recherche français ou étrangers, des laboratoires publics ou privés.



RESEARCH

Open Access

Limoniastrum guyonianum aqueous gall extract induces apoptosis in human cervical cancer cells involving p16^{INK4A} re-expression related to UHRF1 and DNMT1 down-regulation

Mounira Krifa^{1,2}, Mahmoud Alhosin¹, Christian D Muller³, Jean-Pierre Gies¹, Leila Chekir-Ghedira², Kamel Ghedira², Yves Mély¹, Christian Bronner^{4†} and Marc Mousli^{1*†}

Abstract

Several reports have described the potential effects of natural compounds as anti-cancer agents *in vitro* as well as *in vivo*. The aim of this study was to evaluate the anti-cancer effect of *Limoniastrum guyonianum* aqueous gall extract (G extract) and luteolin in the human cervical cancer HeLa cell line, and, if so, to clarify the underlying mechanism. Our results show that G extract and luteolin inhibited cell proliferation and induced G2/M cell cycle arrest in a concentration and time-dependent manner. Both natural products induced programmed cell death as confirmed by the presence of hypodiploid G0/G1 cells. These effects are associated with an up-regulation of the expression of the tumor suppressor gene p16^{INK4A} and a down-regulation of the expression of the anti-apoptotic actor UHRF1 and its main partner DNMT1. Moreover, G extract- and luteolin-induced UHRF1 and DNMT1 down-regulation is accompanied with a global DNA hypomethylation in HeLa cell line. Altogether our results show that G extract mediates its growth inhibitory effects on human cervical cancer HeLa cell line likely via the activation of a p16^{INK4A}-dependent cell cycle checkpoint signalling pathway orchestrated by UHRF1 and DNMT1 down-regulation.

Keywords: Apoptosis, Epigenetic modifications, Gall extract, Tumor suppressor genes, UHRF1

Introduction

Natural products derived from plants have received extensive attention as potential anti-cancer agents over few decades. Most of current anti-cancer drugs such as camptothecin, vincristine, taxol, etoposide and paclitaxel are plant-derived compounds [1,2]. These bioactive phytochemicals are known to exert their anti-cancer activity through different mechanisms, including altered carcinogen metabolism, induction of DNA repair systems, immune activation, suppression of cell cycle progression and induction of apoptosis. Several studies have shown that natural products rich in polyphenols have strong chemopreventive and chemotherapeutic properties in

different types of cancer cells [3,4]. Flavonoids, polyphenolic compounds found in plant-derived dietary components, exhibit multiple biological activities, including anticarcinogenic activity. Luteolin, one of the most effective flavonoids, can delay or block the development of cancer cells *in vitro* and *in vivo* via inhibition of tumor cell proliferation, induction of cell cycle arrest and apoptosis by inhibiting enzymes involved in cell activation such as phosphodiesterases kinases and DNA topoisomerases [5].

Methylation of CpG islands is an important component of the epigenetic code and a number of genes become abnormally methylated during tumorigenesis. A hypermethylation of the tumor suppressor gene p16^{INK4A} at its CpG-rich promoter regions and subsequent inactivation of the p16^{INK4A} gene have been reported in several haematological and solid cancers [6,7]. This hypermethylation targets the expression of specific genes involved in the DNA damage response including, the retinoblastoma protein (pRB) [8]. More recently, many studies have reported that

* Correspondence: marc.mousli@unistra.fr

†Equal contributors

¹UMR CNRS 7213, Laboratoire de Biophotonique et Pharmacologie, Faculté de Pharmacie, Université de Strasbourg, 74 Route du Rhin, CS 60024, Illkirch, Cedex F-67401, France

Full list of author information is available at the end of the article

UHRF1 serves as a fidelity factor for the maintenance of the DNA methylation pattern throughout cell duplication [9,10]. The Set and Ring Associated domain (SRA domain) of UHRF1 has the unique feature to recognize a particular state of DNA, *i.e.*, hemi-methylated. The SRA-DNA interaction may serve as an anchor to keep UHRF1 at a hemi-methylated CpG site where it recruits the DNMT1 for DNA methylation maintenance [9,11]. Thus, UHRF1 plays a fundamental role in the inheritance of the DNA epigenetic marks from the mother cell to the daughter cells. It also appears that preventing the transmission of these marks via knock-down of UHRF1 leads to an activation of pro-apoptotic pathways [9,12-16]. In agreement with this hypothesis, UHRF1 down-regulation has been shown to inhibit cell growth and induces apoptosis of colorectal cancer through p16^{INK4A} up-regulation [17]. Some bioactive plants components have been shown to have cancer inhibition activities by reducing DNA hypermethylation of key cancer-causing genes through their DNA methyltransferase (DNMT) inhibition properties [18]. In this context, recently we found that the epigallocatechin-3-gallate (EGCG), a natural anti-cancer drug induces G1 cell arrest and apoptosis in Jurkat cells by down-regulating UHRF1 and DNMT1 expression, with subsequent up-regulation of p16^{INK4A} gene [19].

L. guyonianum has been used in traditional medicines to treat gastric infections. It has also been employed as an anti-bacterial drug in the treatment of bronchitis [20]. *L. feei* has been similarly used in the treatment of bronchitis and stomach infections [21]. Previous investigations revealed that methanol extract from *L. feei* leaves contained potential anti-fungal constituents that could be employed against *Candida albicans* and anti-bacterial constituents useful against *E. coli* [22]. More recently, our laboratory demonstrated that *L. guyonianum* aqueous gall extract was able to induce splenocyte proliferation and to stimulate macrophage activation [23].

Chemical investigation of *Limoniastrum* genus has been reported in literature. Indeed, bioguided fractionation of leaves extract from *Limoniastrum feei* led to the isolation of several polyphenolic constituents such as Gallic acid, Epigallocatechin gallate, Quercetin and Myricetin [24]. A subsequent article noted that ethyl acetate extract of *L. guyonianum* contained galocatechin, epigallocatechin, and epigallocatechin-3-O-gallate [25]. Several groups have reported that epigallocatechin gallate exhibited antitumor effects that were discovered from various cancer cell lines, animal models and clinical studies [26]. For example, *in vivo* studies showed that epigallocatechin gallate administration decreased H1299 xenograft tumor growth [27]. Furthermore, myricetin treatment significantly inhibited the tumor growth on T24 bladder cancer xenografts model [28]. In the same way, it was demonstrated that gallic acid plays a critical role as an anticancer agent *in vivo*

by decreasing MNNG/HOS xenograft tumor growth in Balb/C mice [29].

The aim of this study was to determine, in HeLa cervical cancer cell line, whether *Limoniastrum guyonianum* aqueous gall extract and luteolin, one of the most common flavonoids, could target UHRF1 and DNMT1 expression with subsequent cell cycle arrest and apoptosis via up-regulation of p16^{INK4A} gene. Our results show that G extract and luteolin cause G2/M cell cycle arrest and trigger apoptosis likely through the inhibition of UHRF1/DNMT1 tandem expression, followed by an up-regulation of p16^{INK4A}.

Materials and methods

Materials

Limoniastrum guyonianum samples were collected from El Hamà at Gabbes (a region situated in southern Tunisia). Dr. Fethia Skhiri (Department of Botany, Higher Institute of Biotechnology, University of Monastir) performed sample identification and verification according to the Tunisian Guide on Flora [30]. A voucher specimen (#L.g-10.09) was preserved for future reference. Luteolin (> 90% of purity) was purchased from Extrasynthese (Genay, France). 3-(4,5-dimethylthiazol-2-yl)-2,5-diphenyltetrazoliumbromide (MTT) was from Euromedex (Mundolsheim, France), propidium iodide (PI), Tris Buffered Saline with tween 20 (TBST) and dimethylsulfoxide (DMSO) from Sigma-Aldrich (St. Quentin Fallavier, France). Dulbecco's Modified Eagle's Medium (DMEM), fetal calf serum (FCS), trypsin and L-glutamine were purchased from Invitrogen Life Technologies (Cergy Pontoise, France). Folin-Ciocalteu phenol reagent was obtained from BDH laboratory (Poole, England). Sodium carbonate (Na₂CO₃) was purchased from Acros Organics (Geel, Belgium). Nitrite sodium (NaNO₂) and aluminum chloride (AlCl₃) were procured from Aldrich (Steinheim, Germany).

Preparation of plant extract

The collected gall samples were shade-dried, powdered, and then stored in a tightly closed container for further use. When needed, powdered gall (100 g) was extracted in boiling water (1 L) for 15–20 min and after filtration, the aqueous extract was frozen and then lyophilized and kept at 4°C. The total aqueous extract concentrate yield (per gram dried plant material) was determined using the formula: 100 x weight (g) of dried extract/dry-weight (g) of plant material. The actual percentage yield in this study was 17.8%. From this material, extract solutions containing different concentrations from 100 to 300 µg/ml were then prepared for use in the evaluation of their cytotoxic and pro-apoptotic effects on HeLa cells. The polyphenol content of *L. guyonianum* gall aqueous extract was quantified by the Folin-Ciocalteu method [31,32] and was expressed as gallic acid equivalent. Aliquots of test sample (100 µl) were mixed with 2.0 ml of 2% Na₂CO₃ and

incubated at room temperature for 2 min. After the addition of 100 μ l of 50% Folin-Ciocalteu phenol reagent, the reaction tube was incubated for 30 min at room temperature, and finally absorbance was read at 720 nm. A known volume of the extract was placed in a 10 ml volumetric flask to estimate flavonoid content [33]. After addition of 75 μ l of NaNO₂ (5%), 150 μ l of freshly prepared AlCl₃ (10%), and 500 μ l of NaOH (1 N), the volume was adjusted with distilled water until 2.5 ml. After 5 min incubation, the total absorbance was measured at 510 nm. Quercetin was used as a standard for constructing a calibration curve.

The method described by [34] was used for the determination of tannin content of samples. Extraction of tannins was achieved by dissolving 5 g of sample in 50 ml of distilled water in a conical flask, allowing the mixture to stand for 30 min with shaking the flask at 10 min intervals, and then centrifuging at 5000 g to obtain a supernatant (tannin extract). The extract was diluted to 100 ml in a standard flask using distilled water. Five milliliters of the diluted extract and 5 ml of standard tannic acid (0.1 g/L) were measured into different 50 ml volumetric flasks. One milliliter of Folin-Denis reagent was added to each flask followed by 2.5 ml of saturated sodium carbonate solution. The solutions were made up to the 50 ml mark with distilled water and incubated at room temperature (20–30°C) for 90 min. The absorption of these solutions was measured against the reagent blank (containing 5 ml distilled water in the place of the extract or the standard tannic acid solution) at 760 nm wavelength. Tannin content was calculated in triplicates as: sample reading/standard reading \times 20 [35].

Cell culture

The human cervical cancer cell line HeLa was obtained from the American Type Culture Collection (Rockville, Maryland, USA) and maintained in a humidified incubator with 5% CO₂ at 37°C, and grown in DMEM (Dulbecco's Modified Eagle's Medium). The medium was supplemented with 10% (v/v) fetal calf serum (FCS, Biowhitaker, Lonza, Belgium), 2 mM glutamine, 100 U/ml penicillin and 50 mg/ml streptomycin (Sigma St. Louis, MO).

Cell proliferation and apoptosis assays

Cells were seeded in 96-well cell culture plates at a density of 0.5×10^4 cells/well, grown for 24 hours and exposed to different concentrations of G extract or luteolin for 24 hours. Cell proliferation rate was then assessed by colorimetric assay using the CellTiter 961 Aqueous One Solution Cell Proliferation Assay (MTT), following the manufacturer's recommendations. Early and late apoptosis were monitored by flow cytometry (Guava PCA-96 Merck/Millipore, Molsheim, France). To discriminate between negative and positive events in the analysis, a non-stained control sample from each

culture condition always accompanied acquisition of the stained cells to define their cut off. Gates were drawn around the appropriate cell populations using a forward scatter (FSC) versus side scatter (SSC) acquisition dot plot. Late apoptotic cells are double labelled by Annexin V and 7-AAD (Guava Nexin Reagent kit Merck/Millipore). Cytometers performances are checked weekly using the Guava easyCheck Kit 4500–0025 (Merck/Millipore/Guava Hayward, CA, USA).

Cell cycle analysis

Cells were seeded in 96-well cell culture plates at a density of 0.5×10^4 cells/well and grown for 24 hours, then exposed to different concentrations of G extract or luteolin for 24 hours. Cells were then washed with phosphate-buffered saline (PBS), trypsin detached then fixed with paraformaldehyde (1%). After 30 min incubation at room temperature, 5 μ l of propidium iodide was added in each well (1 μ g/ml). Cellular DNA content was assessed by capillary cytometry (Guava EasyCyte 96 Plus). Data were analyzed on the Guava CytoSoft™ Express Pro software (Merck/Millipore/Guava Tech). CytoSoft Express Pro was used to identify the three cell cycle phases and calculate relevant statistics, including population percentages (subG1, G0/G1, S and G2/M phases).

Quantification of DNA methylation

HeLa cells were treated with G extract (200 μ g/ml) or luteolin (25 μ M) for 48 hours. DNA was purified using QIAamp® DNA Kit. The content of methylated DNA was determined using 200 ng of DNA from untreated cells, treated cells with G extract or luteolin, as described by the manufacturer; Sigma's Imprint® Methylated DNA Quantification Kit.

Western blot analysis

HeLa cells (6×10^5) were seeded into 6-well cell culture plates and grown for 24 hours. Cells were treated with different concentrations of G extract or luteolin for 24 and 48 hours. The cells were then harvested, centrifuged to discard the DMEM medium, washed with cold PBS (phosphate buffered saline), resuspended in RIPA buffer (25 mM Tris, pH 7.6, 150 mM NaCl, 1% NP-40, 1% sodium deoxycholate and 0.1% SDS; Sigma–Aldrich, USA) containing protease inhibitors. Equal amounts of total protein were separated on 10–12% polyacrylamide gel and electrophoretically transferred to a nitrocellulose membrane. After blocking with 5% non-fat dry milk or 3% BSA (Bovine Serum Albumin) and tween 20 in PBS, the nitrocellulose membranes were incubated with either a mouse monoclonal anti-UHRF1 antibody (Proteogenix, Oberhausbergen, France), a mouse monoclonal anti-DNMT1 (clone 60B1220.1, Proteogenix), and a rabbit

polyclonal anti-p16^{INK4A} antibody (DeltaBiolabs, Gilroy, CA) according to the manufacturer's instructions (4°C, overnight). Membranes were thereafter incubated with the appropriate horseradish peroxidase-conjugated secondary antibody (diluted to 1:10,000 for anti-mouse antibodies and 2: 10,000 for anti-rabbit antibody) at room temperature for 45 minutes. The membranes were then washed with TPBS five times. Signals were detected by chemiluminescence using the ECL Plus detection system (Amersham, GE Healthcare UK Limited).

Statistical analysis

Data were analyzed with student's *t*-test and presented as mean value \pm *S.E.M* of three independent measurements in separate experiments.

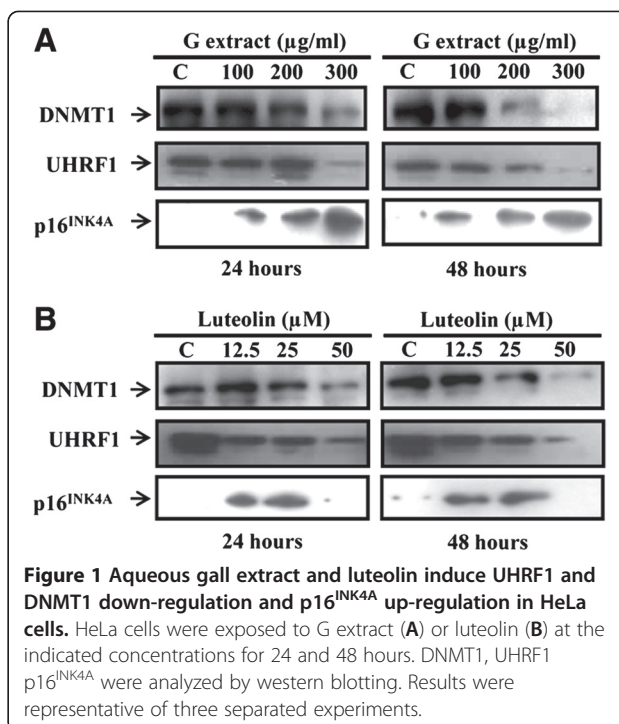
Results

Aqueous gall extract content

Aqueous gall extract from *L. guyonianum* was the subject of a chemical study with the aim of having a global idea in their composition. The metabolites contents of the tested extract are presented in Table 1. Quantitative phytochemical analysis showed that the extract contained an important quantity of flavonoids, polyphenols, and tannins. In fact, 1 mg of G extract was equivalent to 85 μ g of gallic acid and 460 μ g of quercetin. The higher content of tannins was also recorded in the extract with 77.5 mg/100 g.

Aqueous gall extract and luteolin induce UHRF1 and DNMT1 down-regulation and p16^{INK4A} up-regulation associated with a reduced global DNA methylation

The present study was undertaken to investigate the effect of G extract on the expression of UHRF1/DNMT1 tandem known to be involved in gene expression regulation via DNA methylation [9,11]. HeLa cells were treated with different concentrations (100, 200 and 300 μ g/ml) of G extract for 24 and 48 hours. As shown in Figure 1A, treating the cells with 300 μ g/ml of G extract for 24 hours induced a significant decrease in the expression of UHRF1, DNMT1 and this expression was abolished after 48 hours of treatment. Cells treatment with 200 μ g/ml of G extract also induced a significant decrease of UHRF1 and DNMT1 expressions but only after exposure for 48 hours whereas at 100 μ g/ml there was no effect. Several studies have been shown that UHRF1



negatively regulates the expression of the p16^{INK4A} tumor suppressor gene [19,36]. Thus, we aimed to know whether G extract and luteolin could affect the expression of p16^{INK4A} in HeLa cell line. Our results showed that G extract induced a dose dependently up-regulation of p16^{INK4A} expression (Figure 1A). This effect was associated with the G extract-induced down-regulation of UHRF1 and DNMT1 expression (Figure 1A). Quantitative phytochemical analysis of G extract showed that flavonoids are the major compounds present in this extract, which suggest that G extract-induced effect on UHRF1 and DNMT1 expression could be attributed, at least in part to these compounds. In order to obtain evidence for this hypothesis, the effect of luteolin, a dietary flavonoid on the expression of UHRF1, DNMT1 and p16^{INK4A} proteins has been investigated. As shown in Figure 1B, treating cells with luteolin induced a dose and time down-regulation of UHRF1. Indeed, UHRF1 expression was significantly decreased after 24 hours treatments and approximately disappeared at 50 μ M after 48 hours (Figure 1B). For DNMT1, only 50 μ M induced a significant decrease of DNMT1 expressions after incubation for 24 hours. After treatment of cells for 48 hours, DNMT1 expression was significantly decreased at 25 μ M and totally abolished at 50 μ M whereas at 12.5 μ M there was no effect (Figure 1B).

Next, we wanted to determine whether the reduced UHRF1 and DNMT1 levels in G extract and luteolin-treated HeLa cells are correlated with an effect on genomic DNA methylation. We assessed global genomic DNA

Table 1 Phytochemical composition of aqueous gall (G) extract from *L.guyonianum*

Metabolites	Extract content (μ g)
Flavonoids (Quercetin equivalent)	460 \pm 14
Polyphenols (Gallic acid equivalent)	85 \pm 6
Tannis (mg/100g tannic acid)	77 \pm 5

Values are means \pm *S.E.M*. of three independent experiments.

methylation by Imprint® Methylated DNA Quantification assay. As shown in Table 2, a general decrease in genomic DNA methylation was evidenced by both natural products. Indeed, our results demonstrate that G extract and luteolin inhibited DNA methylation as compared to untreated cells (Table 2) with percent inhibition of $42.4\% \pm 1.6\%$ and $46.5\% \pm 1.1\%$ in the presence of G extract and luteolin, respectively. Altogether, these findings showed that both G extract and luteolin were able to decrease UHRF1 and DNMT1 expression leading to a reduced genomic DNA methylation which could induce the re-expression of the *p16^{INK4A}* tumor suppressor gene.

G extract and luteolin inhibit cell growth and induce cell cycle arrest of HeLa cells

Considering that *p16^{INK4A}* tumor suppressor gene is a downstream target of UHRF1 and a negative regulator of cell proliferation [17,36], we then wanted to determine whether G extract- or luteolin-induced up-regulation of *p16^{INK4A}* leads to cell proliferation inhibition and cell cycle arrest. As illustrated in Figure 2, exposure of HeLa cells to G extract (A) or luteolin (B) inhibited cell proliferation in a dose- and time-dependent manner. The IC_{50} values were determined graphically and the inhibition percentages were calculated. Inhibition of proliferation of HeLa cells, by G extract, reached a maximum of 79.6% and 59.7% at a concentration of 300 $\mu\text{g/ml}$ after 48 and 24 hours of incubation, respectively (Figure 2A). IC_{50} values were 170 $\mu\text{g/ml}$ and 140 $\mu\text{g/ml}$ of G extract after 24 and 48 hours treatment, respectively. Interestingly, G extract had no effect on normal human keratinocytes when cells were treated with similar concentrations for 24 and 48 hours (Figure 2C). This suggests that G extract specifically targets cancer cells.

Luteolin was also able to induce cytotoxicity in HeLa cells (Figure 2B) with an IC_{50} value of 21.8 μM after 24 hours. At 50 μM , luteolin decreased proliferation of HeLa cells by 83.8% and 85.9% after 24 hours and 48 hours of incubation, respectively. These results indicate

Table 2 Effects of aqueous gall extract and luteolin on global methylated DNA in HeLa cells

Average of absorbance (nm)	Methylated DNA (% of control)	
MC	0.662 ± 0.030	$259.90^* \pm 4.9$
C	0.283 ± 0.001	100.00
G200	0.152 ± 0.003	$53.53^* \pm 1.52$
L25	0.163 ± 0.005	$57.60^* \pm 2.29$

Total DNA was isolated from HeLa cancer cells using QIAamp® DNA Kit. the content of methylated DNA was determined using 200 ng of DNA from untreated cells (C), treated cells with 200 $\mu\text{g/ml}$ of G extract (G200 or with 25 μM of luteolin(L25) for 48 hours and the commercial methylated control (MC) (Imprint Methylated DNA Quantification Kit) Values are means \pm S.E.M. of three independent experiments. Statistically significant, * $P < 0.001$ (versus the untreated cells).

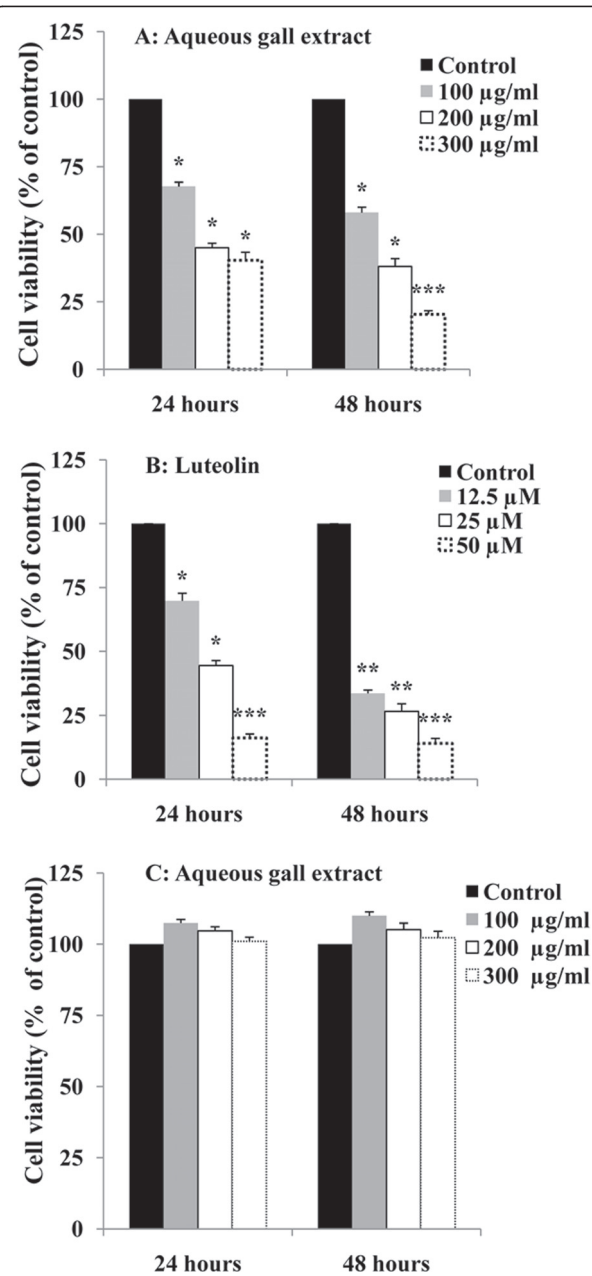


Figure 2 Aqueous gall extract and luteolin inhibit HeLa cell proliferation. HeLa cells and primary cultured human foreskin keratinocytes were treated with different concentrations of G extract (A and C) or luteolin (B) for 24 and 48 hours. Cell proliferation rate was assessed by colorimetric measurements using the MTT assay. The absolute value obtained for each G extract- or luteolin-treated sample is expressed in a second step as percent relative to the corresponding absolute value obtained for the untreated sample and set at 100. Values are means \pm S.E.M. of three independent experiments. Statistically significant, * $P < 0.05$, ** $P < 0.01$, *** $P < 0.001$ (versus the corresponding untreated group).

that both natural products induce a dose-dependent cell growth inhibition of HeLa cells.

Because cell proliferation is a consequence of the progression of the cells through the different phases of the cell cycle, we next determined the effects of G extract and luteolin on the cell cycle distribution (Figure 3). HeLa cells were incubated in the presence and/or absence of different concentrations of G extract (A) or luteolin (B) for 24 hours. Treatment of HeLa cells with the extract caused an increase in G2/M peaks and a decrease in the S and G0/G1-phases fraction in a concentration-dependent manner (Figure 3A). Indeed, the percentage of cells in the G0/G1 phase was decreased from 50.1% (control) to 32.3% at 300 µg/ml whereas an accumulation of the cell population was observed in the G2/M from 7.5% in untreated cells to 19.6% at the same concentration. Similarly to G extract, treatment of HeLa cells with luteolin caused an increase in G2/M phase and a decrease in the G0/G1-phase fraction in a concentration-dependent manner (Figure 3B). It appears therefore that G extract is able to inhibit the proliferation of HeLa cells by promoting cell cycle arrest at the G2/M phase.

G extract and luteolin induce apoptosis in HeLa cells

UHRF1 down-regulation has been shown to induce apoptosis in cancer cells [37]. Moreover, it has recently been demonstrated that UHRF1 down-regulation inhibits cell growth and induces apoptosis of colorectal cancer through p16^{INK4A} up-regulation [17]. Thus, we next investigated whether G extract- or luteolin-induced UHRF1 down-regulation and p16^{INK4A} up-regulation could induce apoptosis in HeLa cells. As shown in Figure 4, increasing concentrations of both products are associated with increasing number of apoptotic cells. Indeed, the percentage of apoptotic cells significantly increased from 8.6 (control) to 46.4% at 200 µg/ml and 54.4% at 300 µg/ml of G extract (Figure 4A), and to 37.2% at 25 µM and 49.2% at 50 µM of luteolin (Figure 4B). As expected, the calculated half-maximal effect of G extract on apoptosis was 170 µg/ml for 24 hours of treatment. Hence, these data were consistent with those obtained from cell proliferation assays (Figure 2). As a next step, cell cycle phase distribution analysis was focused on the detection of specific G0/G1 apoptotic cells; as shown in Figure 4, increasing concentrations of G extract led to increasing number of hypodiploid sub-G0/G1 cells (Figure 4C). Thus, G extract induced an increase in sub-G1 peak in a concentration-dependent manner ranged from 10.2% to 27.6% at concentrations of 100 and 300 µg/ml, respectively. At 50 µM of luteolin, an increment from 8.1% (control) 23.5% was observed in subG1 phase (Figure 4D). Finally, all these results suggest the occurrence of apoptosis in

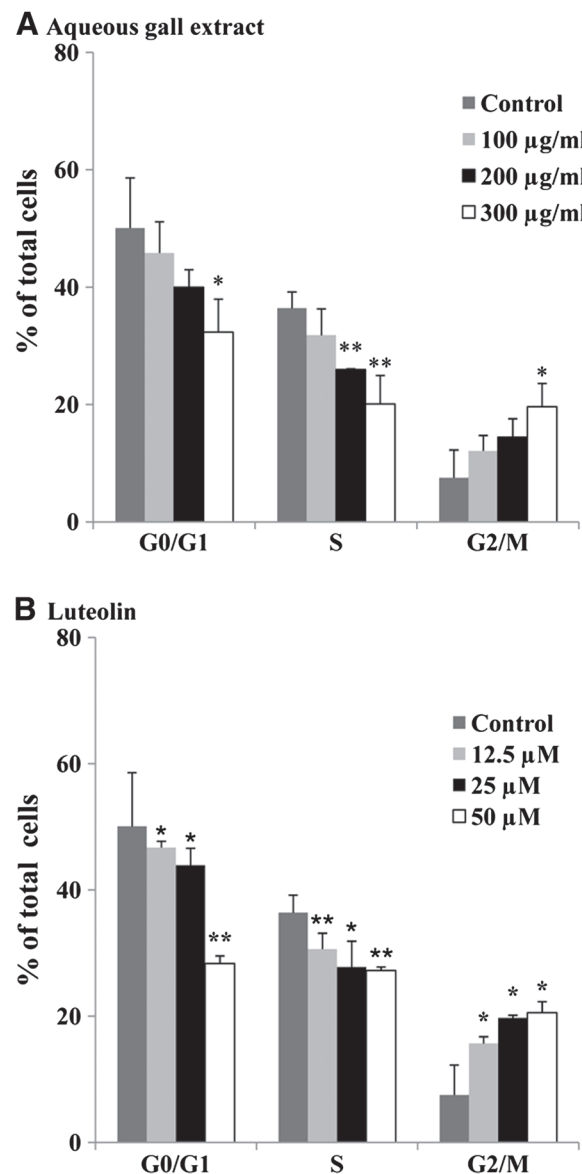


Figure 3 Aqueous gall extract and luteolin arrest cell cycle progression. Cells were treated with different concentrations of aqueous gall extract (A) or luteolin (B) for 24 hours. Cell cycle distribution was assessed by a capillary cytometry detection assay. Cell number in G0/G1, S or G2/M phase was determined and expressed as percent relative to the total cell number. Values are means ± S.E.M. of three experiments. Statistically significant, * $P < 0.05$, ** $P < 0.01$, (versus the corresponding untreated group).

HeLa cells related to UHRF1 down-regulation and p16^{INK4A} up-regulation when exposed to G extract or luteolin.

Discussion

Several studies have reported that plant-derived natural products have cancer chemopreventive and chemotherapeutic properties. Polyphenol-rich fruits and vegetables

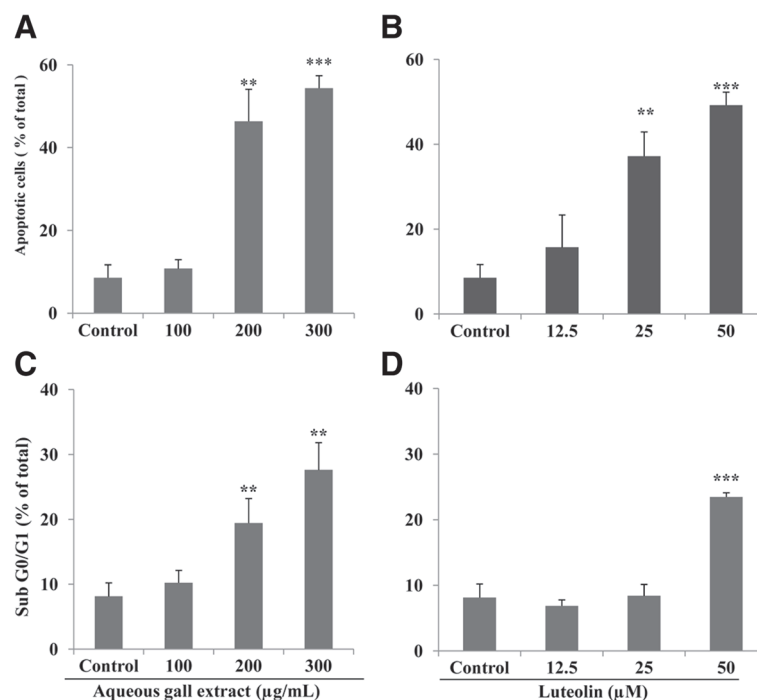


Figure 4 Aqueous gall extract and luteolin induce HeLa apoptosis. Cells were treated with different concentrations of aqueous gall extract (A, C) or luteolin (B, D) for 24 hours. Cell apoptosis rate was assessed by capillary cytometry using the Annexin V-FITC staining assay. The number of apoptotic cells is expressed as percent relative to the total cell number. Cell number in subG0/G1 phase was determined and expressed as percent relative to the total cell number. Values are means \pm S.E.M. of three experiments. Statistically significant, * $P < 0.05$, ** $P < 0.01$, *** $P < 0.001$ (versus the corresponding untreated group).

have been suggested to have anti-cancer properties in several cancers [3,38]. The aim of the present study was to determine the anti-proliferative and pro-apoptotic potential of G extract, a source rich in polyphenols (63%, data not shown) on the human cervical cancer HeLa cell line and if so, to characterize the mechanism involved. The present study indicates that G extract markedly inhibited proliferation of human cervical cancer HeLa cell line in a concentration-dependent manner. The G extract-induced growth inhibitory effect is associated with an arrest of the cell cycle progression in G2/M phase as shown by the cell phase distribution. In addition, G extract promoted in a concentration-dependent manner these cells towards apoptosis as indicated by annexin V labelling and by the increase in hypodiploid sub-G0/G1 cell population. In order to characterize the mechanism involved in the anti-proliferative and pro-apoptotic signalling pathway activated by G extract, the expression of the anti-apoptotic UHRF1, its main partner DNMT1 and the cell cycle inhibitor $p16^{INK4A}$ was determined. The present findings indicate that G extract caused a marked and concentration-dependent up-regulation of $p16^{INK4A}$ suggesting that this cell cycle checkpoint regulator is a key mediator of the

pro-apoptotic activity of G extract in HeLa cells. In addition, G extract also caused a parallel down-regulation of the anti-apoptotic UHRF1 and its partner DNMT1. Similarly, the natural anti-cancer drug, epigallocatechin-3-gallate has been shown to induce $p16^{INK4A}$ re-expression-dependent pro-apoptotic pathway via the down-regulation of UHRF1 in Jurkat cells [19]. Moreover, a recently published study has shown that UHRF1 depletion in cancer cells causes G2/M cell cycle arrest and apoptosis accompanied with phosphorylation of cyclin-dependent kinase 1 (CDK1) [37] which is in agreement with our present data. UHRF1 is an oncogene protein known to bind to methylated DNA and to recruit the DNMT1 to regulate tumor suppressor gene expression including $p16^{INK4A}$ [38]. Here, we showed that G extract decreased the expression UHRF1 as well as DNMT1. This effect was accompanied with an up-regulation of tumor suppressor gene $p16^{INK4A}$. As UHRF1 is a negative regulator of $p16^{INK4A}$ expression involving DNMT1 [19,36], our results suggest that the mechanism of action of G extract involves, at least in part, a down-regulation of UHRF1 with subsequent down-regulation of DNMT1 leading to an up-regulation of $p16^{INK4A}$ gene inducing G2/M cell cycle arrest. In agreement with this hypothesis, we have recently shown that curcumin inhibited melanoma cell

proliferation and cell cycle progression by accumulating cells at the G2/M-phase with decreased expression of UHRF1 and DNMT1 and enhanced expression of p21, a p16^{INK4A}-homolog [39]. Furthermore, because of CDK1 is required for progression of cells from the G2 phase into and through mitosis, down regulation of UHRF1 after cell treatment with G extract might also induce CDK1 phosphorylation and causes the G2/M cell cycle arrest and apoptosis as previously described in UHRF1 depleted cells [37].

Considering that G extract has a high quantity of polyphenolic compounds, we hypothesized that these products could be involved in the anti-proliferative and pro-apoptotic effects on HeLa cells. So, in order to obtain evidence for this hypothesis, the dietary flavonoid luteolin has been used in this study. Several studies have shown that flavonoids have anti-cancer effect on cancer cells involving several mechanisms including, cancer cells elimination, cell-cycle progression inhibition and induction of apoptosis [40-42]. Our results indicate that luteolin inhibits cell proliferation, arrests cell cycle progression and induces apoptosis in HeLa cells. A similar mechanism has also been involved in the effect of luteolin on cell cycle and apoptosis in HeLa cancer cells [43]. It has been shown that luteolin is able to induce G2/M cell cycle arrest and apoptosis in human oesophageal squamous cell carcinoma cell line (KYSE-510) cells in a dose- and time-dependent manner through p73-dependent up-regulation of p21^{waf1} and down-regulation of cyclin B1 [44]. In the present study, we found that luteolin induced cell cycle arrest and apoptosis in HeLa cells associated with a decrease in the expression of UHRF1 and DNMT1 and an increase in the expression of p16^{INK4A}. As p73 is a negative regulator of UHRF1 [45] and a positive regulator of p16^{INK4A} [46], luteolin-induced UHRF1/p16^{INK4A} deregulation observed in HeLa cells could be a result of p73 up-regulation. Similarly, Aronia melanocarpa juice, rich resource in polyphenols has been shown to induce p73-dependent pro-apoptotic pathway involving UHRF1 down-regulation in the p53- deficient acute lymphoblastic leukemia Jurkat cell line [3]. UHRF1 plays an important role in cancer progression through epigenetic mechanisms. However, several reports indicated that UHRF1 contributes to silencing of tumor suppressor genes by recruiting DNMT1 to their promoters. Conversely, demethylation of tumor suppressor gene promoters has been ascribed to some anti-cancer natural products such as epigallocatechin-3-O-gallate [47,48]. Our data showed that both luteolin and G extract were able to down regulate UHRF1 and DNMT1 expressions in HeLa cells. This effect was associated with re-expression of tumor suppressor gene p16^{INK4A}. Unexpectedly, p16^{INK4A} was totally repressed at the higher concentration (50 μ M) of luteolin which could result from p16^{INK4A} protein denaturation and/or degradation at this

concentration. In agreement with this suggestion, luteolin has been shown to up-regulate p21 expression at low concentrations and to down-regulate its expression at high concentrations [49].

Emerging evidence suggests that dietary natural products are involved in epigenetic modifications, especially DNA methylation leading to reduce the risk of cancer [50,51]. Here, we examined the effect of G extract and luteolin on the global DNA methylation in HeLa cells. Our results reveal that the levels of global DNA methylation were reduced in HeLa cells by about 42.4% and 46.5% in the presence of G extract and luteolin for two days, respectively. This effect was associated with a sharp decrease in the expression of DNMT1. The inhibition of DNA methylation as well as UHRF1 and DNMT1 down-regulation and the re-expression of p16^{INK4A} may be ascribed to several compounds found in G extract. Preliminary results of phytochemical screening revealed the presence of polyphenols. Furthermore, it was reported that *L. guyonianum* ethyl acetate extract contains epigallocatechin-3-O-gallate [52]. This biologically active substance could induce p16^{INK4A} re-expression through UHRF1 and DNMT1 depletion [19]. Our data support the idea that the DNA methylation process can be reversed in cancer cells by bioactive phytochemicals. Indeed, it has been shown that apple polyphenols has potent DNA demethylation activity in colorectal cancers by reducing DNMT1 expression with a subsequent activation of TSGs such as p16^{INK4A} [53]. In the same way, it has been shown that grape seed proanthocyanidins, an anti-carcinogenic product, caused a reduced global DNA methylation in skin cancer cells related to a decrease in the level of DNMT1 and an increase in the level of p16^{INK4A} [18]. Considering that UHRF1 binds to methylated promoter of p16^{INK4A} [54] and that UHRF1 interacts with DNMT1 and regulates its expression [36], it is likely that G extract and luteolin induce in cervical cancer cells a down-regulation of UHRF1 with subsequent decrease of DNMT1 expression causing demethylation of p16^{INK4A} promoter.

Conclusion

This is the first report which shows that G extract induces apoptosis related to a reduced DNA methylation likely by acting on the epigenetic integrator UHRF1 and its main partner DNMT1. By using cervical cancer HeLa cell line, we have shown that G extract inhibits cell proliferation and arrests cell cycle progression at the G2/M phase which could be through re-expression the tumor suppressor gene p16^{INK4A}.

Abbreviations

G extract: Aqueous gall extract; DNMT1: DNA methyltransferase1; TSGs: Tumor suppressor genes; UHRF1: Ubiquitin-like, containing PHD and RING finger domains, 1.

Competing interests

The authors declare that they have no competing interests.

Authors' contributions

MK, MA, CB and MM designed the experiments and the draft. CDM, JPG, LCG, KG and YM equally contributed to the writing the article. All authors read and approved the final manuscript.

Acknowledgements

This work was supported by the Agence National de la Recherche (ANR Fluometadn) and by the Fondation pour la Recherche Médicale (FRM DCM20111223038).

Author details

¹UMR CNRS 7213, Laboratoire de Biophotonique et Pharmacologie, Faculté de Pharmacie, Université de Strasbourg, 74 Route du Rhin, CS 60024, Illkirch, Cedex F-67401, France. ²Unité de Pharmacognosie/Biologie Moléculaire 99/UR/07-03. Faculté de Pharmacie de Monastir, Rue Avicenne 5000, Monastir, Tunisie. ³UMR CNRS 7200, Laboratoire d'Innovation Thérapeutique, Université de Strasbourg, Faculté de Pharmacie, 74 route du Rhin, 67401, Illkirch, France. ⁴Institut de Génétique et de Biologie Moléculaire et Cellulaire, CNRS/INSERM, Parc d'innovation, 1 rue Laurent Fries, Illkirch, Cedex 67404, France.

Received: 18 March 2013 Accepted: 17 May 2013

Published: 20 May 2013

References

- Cragg GM, Newman DJ: Plants as a source of anti-cancer agents. *J Ethnopharmacol* 2005, **100**:72–79.
- Srivastava V, Negi AS, Kumar JK, Gupta MM, Khanuja SP: Plant-based anticancer molecules: a chemical and biological profile of some important leads. *Bioorg Med Chem* 2005, **13**:5892–5908.
- Sharif T, Alhosen M, Auger C, Minker C, Kim JH, Etienne-Selloum N, Borjes P, Gronemeyer H, Lobstein A, Bronner C, et al: Aronia melanocarpa juice induces a redox-sensitive p73-related caspase 3-dependent apoptosis in human leukemia cells. *PLoS One* 2012, **7**(3):e32526.
- Ali R, Mirza Z, Ashraf GM, Kamal MA, Ansari SA, Damanhour GA, Abuzenadah AM, Chaudhary AG, Sheikh IA: New anticancer agents: recent developments in tumor therapy. *Anticancer* 2012, **32**:2999–3005.
- Russo P, Del Bufalo A, Cesario A: Flavonoids acting on DNA topoisomerases: recent advances and future perspectives in cancer therapy. *Curr Med Chem* 2012, **19**:5287–5293.
- Lee JJ, Ko E, Cho J, Park HY, Lee JE, Nam SJ, Kim DH, Cho EY: Methylation and immunoexpression of p16(INK4a) tumor suppressor gene in primary Breast Cancer tissue and their quantitative p16(INK4a) Hypermethylation in plasma by real-time PCR. *Korean T Pathol* 2012, **46**:554–561.
- Herman JG, Merlo A, Mao L, Lapidus RG, Issa JP, Davidson NE, Sidransky D, Baylin SB: Inactivation of the CDKN2/p16/MTS1 gene is frequently associated with aberrant DNA methylation in all common human cancers. *Cancer Res* 1995, **55**:4525–4530.
- Serrano M: The tumor suppressor protein p16INK4a. *Exp Cell Res* 1997, **237**:7–13.
- Avvakumov GV, Walker JR, Xue S, Li Y, Duan S, Bronner C, Arrowsmith CH, Dhe-Paganon S: Structural basis for recognition of hemi-methylated DNA by the SRA domain of human UHRF1. *Nature* 2008, **455**:822–825.
- Bronner C, Achour M, Arima Y, Chataigneau T, Saya H, Schini-Kerth VB: The UHRF family: oncogenes that are druggable targets for cancer therapy in the near future? *Pharmacol Ther* 2007, **115**:419–434.
- Bostick M, Kim JK, Esteve PO, Clark A, Pradhan S, Jacobsen SE: UHRF1 plays a role in maintaining DNA methylation in mammalian cells. *Science* 2007, **317**:1760–1764.
- Chen H, Ma H, Inuzuka H, Diao J, Lan F, Shi YG, Wei W, Shi Y: DNA Damage regulates UHRF1 Stability via the SCFbeta-TrCP E3 Ligase. *Mol Cell Biol* 2013, **33**(6):1139–1148.
- Muto M, Kanari Y, Kubo E, Takabe T, Kurihara T, Fujimori A, Tatsumi K: Targeted disruption of Np95 gene renders murine embryonic stem cells hypersensitive to DNA damaging agents and DNA replication blocks. *J Biol Chem* 2002, **277**:34549–34555.
- Muto M, Fujimori A, Nenoi M, Daino K, Matsuda Y, Kuroiwa A, Kubo E, Kanari Y, Utsuno M, Tsuji H, et al: Isolation and characterization of a novel human radiosensitivity gene, NP95. *Radiat Res* 2006, **166**:723–733.
- Li XL, Meng QH, Fan SJ: Adenovirus-mediated expression of UHRF1 reduces the radiosensitivity of cervical cancer HeLa cells to gamma-irradiation. *Acta Pharmacol Sin* 2009, **30**:458–466.
- Mistry H, Tamblyn L, Butt H, Sisgoreo D, Gracias A, Larin M, Gopalakrishnan K, Hande MP, McPherson JP: UHRF1 is a genome caretaker that facilitates the DNA damage response to gamma-irradiation. *Genome Integr* 2010, **1**(1):7.
- Wang F, Yang YZ, Shi CZ, Zhang P, Moyer MP, Zhang HZ, Zou Y, Qin HL: UHRF1 promotes cell growth and metastasis through repression of p16(ink4a) in colorectal cancer. *Ann Surg Oncol* 2012, **19**(8):2753–2762.
- Vaid M, Prasad R, Singh T, Jones V, Katiyar SK: Grape seed proanthocyanidins reactivate silenced tumor suppressor genes in human skin cancer cells by targeting epigenetic regulators. *Toxicol Appl Pharmacol* 2012, **263**(1):122–130.
- Achour M, Mousli M, Alhosen M, Ibrahim A, Peluso J, Muller CD, Schini-Kerth VB, Hamiche A, Dhe-Paganon S, Bronner C: Epigallocatechin-3-gallate up-regulates tumor suppressor gene expression via a reactive oxygen species-dependent down-regulation of UHRF1. *Biochem Biophys Res Commun* 2012, **430**(1):208–212.
- Le Floch E: Contribution à une étude ethnobotanique de la flore tunisienne. Tunisie: ministère de l'enseignement supérieur et de la recherche scientifique; 1983:192.
- Belboukhari N, Cheriti A: Analysis and isolation of saponins from Limoniastrum feei by LC-UV. *Chem of Nat Com* 2009, **45**:756–758.
- Belboukhari N, Cheriti A: Anti-microbial activity of aerial part crude extracts from Limoniastrum feei. *Asian J of Plant Sci* 2005, **4**:496–498.
- Krifa M, Bouhlel I, Ghedira-Chekir L, Ghedira K: Immunomodulatory and cellular anti-oxidant activities of an aqueous extract of Limoniastrum guyonianum gall. *J of Ethnoph* 2013, **146**:243–249.
- Chaabi M, Beghidja N, Benayache S, Lobstein A: Activity-guided isolation of antioxidant principles from Limoniastrum feei (Girard) Batt. *Z Naturforsch C* 2008, **63**:801–807.
- Trabelsi N, Oueslati S, Falleh H, Waffo-Teguo P, Papastamoulis Y, Merillon JM, Abdely C, Ksouri R: Isolation of powerful antioxidants from the medicinal halophyte limoniastrum guyonianum. *Food Chem*, **135**:1419–1424.
- Lemarie F, Chang CW, Blatchford DR, Amor R, Norris G, Tetley L, McConnell G, Dufes C: Antitumor activity of the tea polyphenol epigallocatechin-3-gallate encapsulated in targeted vesicles after intravenous administration. *Nanomedicine* 2013, **8**:181–192.
- Li GX, Chen YK, Hou Z, Xiao H, Jin H, Lu G, Lee MJ, Liu B, Guan F, Yang Z, et al: Pro-oxidative activities and dose-response relationship of (–)-epigallocatechin-3-gallate in the inhibition of lung cancer cell growth: a comparative study in vivo and in vitro. *Carcinogenesis* 2010, **31**(5):902–910.
- Sun F, Zheng XY, Ye J, Wu TT, Wang J, Chen W: Potential anticancer activity of myricetin in human T24 bladder cancer cells both in vitro and in vivo. *Nutr Cancer* 2012, **64**(4):599–606.
- Liang CZ, Zhang X, Li H, Tao YQ, Tao LJ, Yang ZR, Zhou XP, Shi ZL, Tao HM: Gallic acid induces the apoptosis of human osteosarcoma cells in vitro and in vivo via the regulation of mitogen-activated protein kinase pathways. *Cancer Biother Radiopharm* 2012, **27**(10):701–710.
- Pottier-Alapetite G: Flore de la Tunisie: angiospermes, dicotyledones, apétales, dialypétales, tunisie: ministère de l'enseignement supérieur et de la recherche scientifique et ministère de l'agriculture. Tunisie; 1979:210.
- Chattopadhyay SK, Kumar S: Identification and quantification of two biologically active polyisoprenylated benzophenones xanthochymol and isoxanthochymol in Garcinia species using liquid chromatography-tandem mass spectrometry. *J Chromatogr B Analyt Technol Biomed Life Sci* 2006, **844**:67–83. Epub 2006 Aug 2022.
- Yuan YV, Bone DE, Carrington MF: Antioxidant activity of dulce (Palmaria palmata) extract evaluated in vitro. *Food Chem* 2005, **91**:485–494.
- Zhishen J, Mengcheng T, Jianming W: The determination of flavonoid contents in mulberry and their scavenging effects on superoxide radicals. *Food Chem* 1999, **64**:555–559.
- Pearson D: The chemical analysis of foods. London: Churchill Livingstone; 1976.
- Nwabueze TU: Effect of process variables on trypsin inhibitor activity (TIA) phytic acid and tannin content of extruded African bread fruit-corn-soy mixtures: a response surface analysis. *LWT* 2007, **40**:21–29.
- Achour M, Jacq X, Ronde P, Alhosen M, Charlot C, Chataigneau T, Jeanblanc M, Macaluso M, Giordano A, Hughes AD, et al: The interaction of the SRA domain of ICBP90 with a novel domain of DNMT1 is involved in the regulation of VEGF gene expression. *Oncogene* 2008, **27**:2187–2197.

37. Tien AL, Senbanerjee S, Kulkarni A, Mudbhary R, Goudreau B, Ganesan S, Sadler KC, Ukomadu C: **UHRF1 depletion causes a G2/M arrest, activation of DNA damage response and apoptosis.** *Biochem J* 2011, **435**(1):175–185.
38. Alhosin M, Sharif T, Mousli M, Etienne-Selloum N, Fuhrmann G, Schini-Kerth VB, Bronner C: **Down-regulation of UHRF1, associated with re-expression of tumor suppressor genes, is a common feature of natural compounds exhibiting anti-cancer properties.** *J Exp Clin Cancer Res* 2011, **30**(15):41.
39. Abusnina A, Keravis T, Yougbare I, Bronner C, Lugnier C: **Anti-proliferative effect of curcumin on melanoma cells is mediated by PDE1A inhibition that regulates the epigenetic integrator UHRF1.** *Mol Nutr Food Res* 2011, **55**(11):1677–1689.
40. Choi JA, Kim JY, Lee JY, Kang CM, Kwon HJ, Yoo YD, Kim TW, Lee YS, Lee SJ: **Induction of cell cycle arrest and apoptosis in human breast cancer cells by quercetin.** *Int J Oncol* 2001, **19**:837–844.
41. Mu C, Jia P, Yan Z, Liu X, Li X, Liu H: **Quercetin induces cell cycle G1 arrest through elevating Cdk inhibitors p21 and p27 in human hepatoma cell line (HepG2).** *Methods Find Exp Clin Pharmacol* 2007, **29**:179–183.
42. Ujiki MB, Ding XZ, Salabat MR, Bentrem DJ, Golkar L, Milam B, Talamonti MS, Bell RH Jr, Iwamura T, Adrian TE: **Apigenin inhibits pancreatic cancer cell proliferation through G2/M cell cycle arrest.** *Mol Cancer* 2006, **5**:76.
43. Xie F, Lang Q, Zhou M, Zhang H, Zhang Z, Zhang Y, Wan B, Huang Q, Yu L: **The dietary flavonoid luteolin inhibits Aurora B kinase activity and blocks proliferation of cancer cells.** *Eur J Pharm Sci* 2012, **15**: 46(5):388–396.
44. Zhang Q, Zhao XH, Wang ZJ: **Cytotoxicity of flavones and flavonols to a human esophageal squamous cell carcinoma cell line (KYSE-510) by induction of G2/M arrest and apoptosis.** *Toxicol In Vitro* 2009, **23**:797–807.
45. Alhosin M, Abusnina A, Achour M, Sharif T, Muller C, Peluso J, Chataigneau T, Lugnier C, Schini-Kerth VB, Bronner C, Fuhrmann G: **Induction of apoptosis by thymoquinone in lymphoblastic leukemia Jurkat cells is mediated by a p73-dependent pathway which targets the epigenetic integrator UHRF1.** *Biochem Pharmacol* 2010, **79**(9):1251–1260.
46. Boominathan L: **Some facts and thoughts: p73 as a tumor suppressor gene in the network of tumor suppressors.** *Mol Cancer* 2007, **6**:27.
47. Nandakumar V, Vaid M, Katiyar SK: **(-)-Epigallocatechin-3-gallate reactivates silenced tumor suppressor genes, Cip1/p21 and p16INK4a, by reducing DNA methylation and increasing histones acetylation in human skin cancer cells.** *Carcinogenesis* 2011, **32**:537–544.
48. Medina-Franco JL, Lopez-Vallejo F, Kuck D, Lyko F: **Natural products as DNA methyltransferase inhibitors: a computer-aided discovery approach.** *Mol Divers* 2011, **15**(2):293–304.
49. Chiang CT, Way TD, Lin JK: **Sensitizing HER2-overexpressing cancer cells to luteolin-induced apoptosis through suppressing p21(WAF1/CIP1) expression with rapamycin.** *Mol Cancer Ther* 2007, **6**:2127–2138.
50. Davis CD, Uthus EO: **DNA methylation, cancer susceptibility, and nutrient interactions.** *Exp Biol Med (Maywood)* 2004, **229**:988–995.
51. Huang J, Plass C, Gerhauser C: **Cancer chemoprevention by targeting the epigenome.** *Curr Drug Targets* 2011, **12**(13):1925–1956.
52. Trabelsi N, Oueslati S, Falleh H, Waffo-Taguo P, Papastamoulis Y, Mârillon J-M, Abdellly C, Ksouri R: **Isolation of powerful antioxidants from the medicinal halophyte *Limoniastrum guyonianum*.** *Food Chemistry* 2012, **135**:1419–1424.
53. Fini L, Selgrad M, Fogliano V, Graziani G, Romano M, Hotchkiss E, Daoud YA, De Vol EB, Boland CR, Ricciardiello L: **Annurca apple polyphenols have potent demethylating activity and can reactivate silenced tumor suppressor genes in colorectal cancer cells.** *J Nutr* 2007, **137**:2622–2628.
54. Unoki M, Nishidate T, Nakamura Y: **ICBP90, an E2F-1 target, recruits HDAC1 and binds to methyl-CpG through its SRA domain.** *Oncogene* 2004, **23**:7601–7610.

doi:10.1186/1756-9966-32-30

Cite this article as: Krifa et al.: *Limoniastrum guyonianum* aqueous gall extract induces apoptosis in human cervical cancer cells involving p16^{INK4A} re-expression related to UHRF1 and DNMT1 down-regulation. *Journal of Experimental & Clinical Cancer Research* 2013 **32**:30.

Submit your next manuscript to BioMed Central and take full advantage of:

- **Convenient online submission**
- **Thorough peer review**
- **No space constraints or color figure charges**
- **Immediate publication on acceptance**
- **Inclusion in PubMed, CAS, Scopus and Google Scholar**
- **Research which is freely available for redistribution**

Submit your manuscript at
www.biomedcentral.com/submit

