

SUPPLEMENTARY INFORMATION

Molecular characteristics of Human Endogenous Retrovirus type-W (HERV-W) in schizophrenia and bipolar disorder.

TABLE OF CONTENT:

| | |
|--|-------------|
| I. Complementary Statistical analyses | P. 2 |
| TABLE S1: HERV-W RNA RELATIVE EXPRESSION OF THE MSRV SUBTYPE, ALL CONTROLS | |
| TABLE S2: RELATIVE EXPRESSION OF THE MSRV SUBTYPE, CONTROLS WITH NEGATIVE CRP (C-) | |
| TABLE S3: HERV-W RNA RELATIVE EXPRESSION AND DNA COPY NUMBERS STATISTICAL ANALYSES EXCLUDING BIPOLAR DISORDER PATIENTS TREATED WITH VALPROATE. | |
| II. Sequence analyses | P. 3 |
| FIGURE S1: SEQUENCE ALIGNEMENTS WITH THE PROBE | P3-14 |
| FIGURE S1A: HC RNA | P3-4 |
| FIGURE S1B: HC DNA | P5-6 |
| FIGURE S1C: BD RNA | P7-8 |
| FIGURE S1D: BD DNA | P9-10 |
| FIGURE S1E: SZ RNA | P11-12 |
| FIGURE S1F: SZ DNA | P13-14 |
| FIGURE S2: PHYLOGENETIC TREE REPRESENTATION OF ALIGNED CLONES WITH RELATED HERV-W AND DISTANT HERV-K ENV GENE SEQUENCES: | P15-17 |
| FIGURE S2A: RNA AND DNA CLONES FROM BD | P15 |
| FIGURE S2B: RNA AND DNA CLONES FROM SZ | P16 |
| FIGURE S2C: RNA AND DNA CLONES FROM HC | P17 |

I. Complementary Statistical analyses:

Table S1: HERV-W RNA relative expression of the MSRV subtype, all controls

| Variables | BP,N=91 | SZ,N=45 | Controls,N=73 | P for all | P BP vs TEM | P BP vs SZ | P SZ vs TEM |
|-----------|------------|------------|---------------|-------------------------------------|-------------|------------|-------------|
| | Mean(SD) | | | P value Kruskal Wallis/Mann Whitney | | | |
| RNA | 1.62 (4.6) | 0.84 (0.5) | 0.65 (0.6) | <0.0001 | <0.0001 | 0.01 | 0.012 |
| DNA | 0.61(0.3) | 0.55(0.3) | 0.77(0.3) | 0.0005 | 0.0016 | 0.575 | 0.0003 |

Table S2: HERV-W relative expression of the MSRV subtype, Controls with negative CRP (C-)

| Variables | BP,N=91 | SZ,N=45 | Controls,N=46 | P for all | P BP vs TEM | P BP vs SZ | P SZ vs TEM |
|-----------|------------|------------|---------------|-------------------------------------|-------------|------------|-------------|
| | Mean(SD) | | | P value Kruskal Wallis/Mann Whitney | | | |
| RNA | 1.62 (4.6) | 0.84 (0.5) | 0.62 (0.6) | <0.0001 | <0.0001 | 0.01 | 0.007 |
| DNA | 0.60(0.3) | 0.55(0.3) | 0.77(0.3) | 0.0015 | 0.003 | 0.575 | 0.0006 |

Table S3: HERV_W RNA relative expression and DNA copy numbers of the MSRV subtype. Statistical analyses excluding Bipolar Disorder Patients treated with Valproate.

| Variables | BP,N=68 | SZ,N=45 | Controls,N=73 | P for all | P BP vs TEM | P BP vs SZ | P SZ vs TEM |
|-----------|------------|------------|---------------|-------------------------------------|-------------|------------|-------------|
| | Mean(SD) | | | P value Kruskal Wallis/Mann Whitney | | | |
| RNA | 1.71 (5.3) | 0.84 (0.5) | 0.65 (0.6) | <0.0001 | <0.0001 | 0.087 | 0.007 |
| DNA | 0.61(0.3) | 0.55(0.3) | 0.77(0.3) | 0.0009 | 0.006 | 0.468 | 0.0003 |

II. Sequence analyses

Figure S1: Sequence alignments with the HERV-W/MSRV-env specific Probe

Figure S1A: HC RNA

```

MSRVqPCR p      10      20
                TTCTTCAAATGGAGCCCCAGATGCAG
                AAGAAGTTTACCTCGGGGTCTACGTC

1. RNA-H12_1    40      50
[ 104 ]        TTCTTCAAATGGAGCCCCAGATGCAG>
                |||
MSRVqPCR p      TTCTTCAAATGGAGCCCCAGATGCAG

2. RNA-H12_1    40      50
[ 104 ]        TTCTTCAAATGGAGCCCCAGATGCAG>
                |||
MSRVqPCR p      TTCTTCAAATGGAGCCCCAGATGCAG

3. RNA-H12_1    40      50
[ 104 ]        TTCTTCAAATGGAGCCCCAGATGCAG>
                |||
MSRVqPCR p      TTCTTCAAATGGAGCCCCAGATGCAG

4. RNA-H12_1    40      50
[ 104 ]        TTCTTCAAATGGAGCCCCAGATGCAG>
                |||
MSRVqPCR p      TTCTTCAAATGGAGCCCCAGATGCAG

5. RNA-H12_1    40      50
[ 104 ]        TTCTTCAAATGGAGCCCCAGATGCAG>
                |||
MSRVqPCR p      TTCTTCAAATGGAGCCCCAGATGCAG

6. RNA-H12_6    40      50
[ 104 ]        TTCTTCAAATGGAGCCCCAGATGCAG>
                |||
MSRVqPCR p      TTCTTCAAATGGAGCCCCAGATGCAG

7. RNA-H12_8    40      50
[ 104 ]        TTCTTCAAATGGAGCCCCAGATGCAG>
                |||
MSRVqPCR p      TTCTTCAAATGGAGCCCCAGATGCAG

8. RNA-H12_9    40      50

```

```
[ 104 ] TTCTTCAAATGGAGCCCCAGATGCAG->
MSRVqPCR p |TTTTTTTTTTTTTTTTTTTTTTTTTTTT|
TTCTTCAAATGGAGCCCCAGATGCAG

9. RNA-H16_1 40 50
[ 104 ] TTCTTCAAATGGAGCCCCAGATGCAG->
MSRVqPCR p |TTTTTTTTTTTTTTTTTTTTTTTTTTTT|
TTCTTCAAATGGAGCCCCAGATGCAG

10. RNA-H16_ 40 50
[ 104 ] TTCTTCAAATGGAGCCCCAGATGCAG->
MSRVqPCR p |TTTTTTTTTTTTTTTTTTTTTTTTTTTT|
TTCTTCAAATGGAGCCCCAGATGCAG

11. RNA-H16_ 40 50
[ 104 ] TTCTTCAAATGGAGCCCCAGATGCAG->
MSRVqPCR p |TTTTTTTTTTTTTTTTTTTTTTTTTTTT|
TTCTTCAAATGGAGCCCCAGATGCAG

12. RNA-H16_ 40 50
[ 104 ] TTCTTCAAATGGAGCCCCAGATGCAG->
MSRVqPCR p |TTTTTTTTTTTTTTTTTTTTTTTTTTTT|
TTCTTCAAATGGAGCCCCAGATGCAG

13. RNA-H16_ 40 50
[ 104 ] TTCTTCAAATGGAGCCCCAGATGCAG->
MSRVqPCR p |TTTTTTTTTTTTTTTTTTTTTTTTTTTT|
TTCTTCAAATGGAGCCCCAGATGCAG

14. RNA-H1_1 40 50
[ 104 ] TTCTTCAAATGGAGCCCCAGATGCAG->
MSRVqPCR p |TTTTTTTTTTTTTTTTTTTTTTTTTTTT|
TTCTTCAAATGGAGCCCCAGATGCAG

15. RNA-H1_1 40 50
[ 104 ] TTCTTCAAATGGAGCCCCAGATGCAG->
MSRVqPCR p |TTTTTTTTTTTTTTTTTTTTTTTTTTTT|
TTCTTCAAATGGAGCCCCAGATGCAG

16. RNA-H1_2 40 50
[ 104 ] TTCTTCAAATGGAGCCCCAGATGCAG->
MSRVqPCR p |TTTTTTTTTTTTTTTTTTTTTTTTTTTT|
TTCTTCAAATGGAGCCCCAGATGCAG

17. RNA-H1_3 40 50
[ 104 ] TTCTTCAAATGGAGCCCCAGATGCAG->
MSRVqPCR p |TTTTTTTTTTTTTTTTTTTTTTTTTTTT|
TTCTTCAAATGGAGCCCCAGATGCAG

18. RNA-H12_ 40 50
[ 100 ] TTCTTCAAATGGAGCCCCAGATGCA->
MSRVqPCR p |TTTTTTTTTTTTTTTTTTTTTTTTTTTT|
TTCTTCAAATGGAGCCCCAGATGCA
```

```

19. RNA-H16_      40      50
[ 100 ] TTCTTCAAATGGANCCCCAGATGCAG>
          |||
MSRVqPCR p TTCTTCAAATGGAGCCCCAGATGCAG

20. RNA-H1_8     40      50
[ 100 ] TTCTTCAAATGGAGCCCCAGATGCA>
          |||
MSRVqPCR p TTCTTCAAATGGAGCCCCAGATGCA

21. RNA-H12_    130     120     110
[ 98 ] <TTCTTCAAATGGAACCCAGATGCAG
          |||
MSRVqPCR p TTCTTCAAATGGAGCCCCAGATGCAG

22. RNA-H12_    40      50
[ 98 ] TTCTTCAAATGGAACCCAGATGCAG>
          |||
MSRVqPCR p TTCTTCAAATGGAGCCCCAGATGCAG

23. RNA-H12_    40      50
[ 98 ] TTCTTCAAATGGAACCCAGATGCAG>
          |||
MSRVqPCR p TTCTTCAAATGGAGCCCCAGATGCAG

24. RNA-H16_    130     120     110
[ 98 ] <TTCTTCAAATGGAACCCAGATGCAG
          |||
MSRVqPCR p TTCTTCAAATGGAGCCCCAGATGCAG

25. RNA-H16_    130     120     110
[ 98 ] <TTCTTCAAATGGAACCCAGATGCAG
          |||
MSRVqPCR p TTCTTCAAATGGAGCCCCAGATGCAG

26. RNA-H16_    40      50
[ 98 ] TTCTTCAAATGGAACCCAGATGCAG>
          |||
MSRVqPCR p TTCTTCAAATGGAGCCCCAGATGCAG

27. RNA-H16_    40      50
[ 98 ] TTCTTCAAATGGAACCCAGATGCAG>
          |||
MSRVqPCR p TTCTTCAAATGGAGCCCCAGATGCAG

28. RNA-H1_1    40      50
[ 98 ] TTCTTCAAATGGAACCCAGATGCAG>
          |||
MSRVqPCR p TTCTTCAAATGGAGCCCCAGATGCAG

29. RNA-H1_1    130     120     110
[ 98 ] <TTCTTCAAATGGAACCCAGATGCAG
          |||
MSRVqPCR p TTCTTCAAATGGAGCCCCAGATGCAG

30. RNA-H1_1    130     120     110
[ 98 ] <TTCTTCAAATGGAACCCAGATGCAG
          |||
MSRVqPCR p TTCTTCAAATGGAGCCCCAGATGCAG

31. RNA-H1_7    40      50
[ 98 ] TTCTTCAAATGGAACCCAGATGCAG>
          |||
MSRVqPCR p TTCTTCAAATGGAGCCCCAGATGCAG

32. RNA-H16_    130     120     110
[ 92 ] <TTCTTCAAACGGAACCCAGATGCAG
          |||
MSRVqPCR p TTCTTCAAATGGAGCCCCAGATGCAG

33. RNA-H12_    320     330
[ 88 ] TTCTTCAAATGGAGCCCCAGA--CAG>
          |||
MSRVqPCR p TTCTTCAAATGGAGCCCCAGATGCAG

```

Figure S1B: HC DNA

```

MSRVqPCR p      10      20
                TTCTTCAAATGGAGCCCCAGATGCAG
                AAGAAGTTTACCTCGGGGTCTACGTC

1. DNA-H12_1      40      50
[ 104 ]          TTCTTCAAATGGAGCCCCAGATGCAG>
                |||
MSRVqPCR p      TTCTTCAAATGGAGCCCCAGATGCAG

2. DNA-H12_5      40      50
[ 104 ]          TTCTTCAAATGGAGCCCCAGATGCAG>
                |||
MSRVqPCR p      TTCTTCAAATGGAGCCCCAGATGCAG

3. DNA-H16_1      40      50
[ 104 ]          TTCTTCAAATGGAGCCCCAGATGCAG>
                |||
MSRVqPCR p      TTCTTCAAATGGAGCCCCAGATGCAG

4. DNA-H16_1      40      50
[ 104 ]          TTCTTCAAATGGAGCCCCAGATGCAG>
                |||
MSRVqPCR p      TTCTTCAAATGGAGCCCCAGATGCAG

5. DNA-H16_1      40      50
[ 104 ]          TTCTTCAAATGGAGCCCCAGATGCAG>
                |||
MSRVqPCR p      TTCTTCAAATGGAGCCCCAGATGCAG

6. DNA-H16_140   50      60
[ 104 ]          TTCTTCAAATGGAGCCCCAGATGCAG>
                |||
MSRVqPCR p      TTCTTCAAATGGAGCCCCAGATGCAG

7. DNA-H16_5     40      50
[ 104 ]          TTCTTCAAATGGAGCCCCAGATGCAG>
                |||
MSRVqPCR p      TTCTTCAAATGGAGCCCCAGATGCAG

8. DNA-H16_8     40      50
[ 104 ]          TTCTTCAAATGGAGCCCCAGATGCAG>
                |||
MSRVqPCR p      TTCTTCAAATGGAGCCCCAGATGCAG

9. DNA-H1_13     40      50
[ 104 ]          TTCTTCAAATGGAGCCCCAGATGCAG>
                |||
MSRVqPCR p      TTCTTCAAATGGAGCCCCAGATGCAG

10. DNA-H1_1     40      50
[ 104 ]          TTCTTCAAATGGAGCCCCAGATGCAG>
                |||
MSRVqPCR p      TTCTTCAAATGGAGCCCCAGATGCAG

11. DNA-H12_    130     120     110
[ 98 ]          <TTCTTCAAATGGAACCCAGATGCAG
                |||
MSRVqPCR p      TTCTTCAAATGGAGCCCCAGATGCAG

12. DNA-H12_     40      50
[ 98 ]          TTCCTCAAATGGAGCCCCAGATGCAG>
                |||
MSRVqPCR p      TTCTTCAAATGGAGCCCCAGATGCAG

13. DNA-H12_     40      50
[ 98 ]          TTCCTCAAATGGAGCCCCAGATGCAG>
                |||
MSRVqPCR p      TTCTTCAAATGGAGCCCCAGATGCAG

14. DNA-H16_40   50      60
[ 98 ]          TTCTTCAAATGGAACCCAGATGCAG>
                |||
MSRVqPCR p      TTCTTCAAATGGAGCCCCAGATGCAG

15. DNA-H16_40   50      60
[ 98 ]          TTCCTCAAATGGAGCCCCAGATGCAG>
                |||
MSRVqPCR p      TTCTTCAAATGGAGCCCCAGATGCAG

16. DNA-H16_     40      50
[ 98 ]          TTCTTCAAATGGAACCCAGATGCAG>
                |||
MSRVqPCR p      TTCTTCAAATGGAGCCCCAGATGCAG

17. DNA-H1_1     130     120     110
[ 98 ]          <TTCCTCAAATGGAGCCCCAGATGCAG
                |||
MSRVqPCR p      TTCTTCAAATGGAGCCCCAGATGCAG

18. DNA-H1_7     40      50
[ 98 ]          TTCCTCAAATGGAGCCCCAGATGCAG>
                |||
MSRVqPCR p      TTCTTCAAATGGAGCCCCAGATGCAG

```

```
19. DNA-H1_1      40      50
[ 96 ] TTCTTCAAATGGAGCCCCAGATG-AG>
      |||
MSRVqPCR p TTCTTCAAATGGAGCCCCAGATGCAG

20. DNA-H1_4      40      50
[ 96 ] TTCTTCAAATGGAGCCCCAGATG-AG>
      |||
MSRVqPCR p TTCTTCAAATGGAGCCCCAGATGCAG

21. DNA-H12_      40      50
[ 92 ] TTCTTAAATTGGAGCCCCAGATGCAG>
      |||
MSRVqPCR p TTCTTCAAATGGAGCCCCAGATGCAG

22. DNA-H12_      40      50
[ 92 ] TTCTTAAATTGGAGCCCCAGATGCAG>
      |||
MSRVqPCR p TTCTTCAAATGGAGCCCCAGATGCAG

23. DNA-H12_      40      50
[ 92 ] TTCTTAAATTGGAGCCCCAGATGCAG>
      |||
MSRVqPCR p TTCTTCAAATGGAGCCCCAGATGCAG

24. DNA-H12_      40      50
[ 92 ] TTCTTAAATTGGAGCCCCAGATGCAG>
      |||
MSRVqPCR p TTCTTCAAATGGAGCCCCAGATGCAG

25. DNA-H12_      40      50
[ 92 ] TTCTTCAAATTGAGCCTCAGATGCAG>
      |||
MSRVqPCR p TTCTTCAAATGGAGCCCCAGATGCAG

26. DNA-H12_      40      50
[ 92 ] TTCTTCAAATTGAGCCTCAGATGCAG>
      |||
MSRVqPCR p TTCTTCAAATGGAGCCCCAGATGCAG

27. DNA-H16_ 130      120      110
[ 92 ] <TTCTTAAATTGGAGCCCCAGATGCAG
      |||
MSRVqPCR p TTCTTCAAATGGAGCCCCAGATGCAG

28. DNA-H16_ 40      50      60
[ 92 ] TTCTTAAATTGGAGCCCCAGATGCAG>
      |||
MSRVqPCR p TTCTTCAAATGGAGCCCCAGATGCAG

29. DNA-H16_ 130      120      110
[ 92 ] <TTCTTAAATTGGAGCCCCAGATGCAG
      |||
MSRVqPCR p TTCTTCAAATGGAGCCCCAGATGCAG
30. DNA-H16_      40      50
[ 92 ] TTCTTAAATTGGAGCCCCAGATGCAG>
      |||
MSRVqPCR p TTCTTCAAATGGAGCCCCAGATGCAG

31. DNA-H16_      40      50
[ 92 ] TTCTTAAATTGGAGCCCCAGATGCAG>
      |||
MSRVqPCR p TTCTTCAAATGGAGCCCCAGATGCAG

32. DNA-H1_1 130      120      110
[ 92 ] <TTCTTAAATTGGAGCCCCAGATGCAG
      |||
MSRVqPCR p TTCTTCAAATGGAGCCCCAGATGCAG

33. DNA-H1_1      40      50
[ 92 ] TTCTTAAATTGGAGCCCCAGATGCAG>
      |||
MSRVqPCR p TTCTTCAAATGGAGCCCCAGATGCAG

34. DNA-H1_3 130      120      110
[ 92 ] <TTCTTAAATTGGAGCCCCAGATGCAG
      |||
MSRVqPCR p TTCTTCAAATGGAGCCCCAGATGCAG

35. DNA-H1_6      40      50
[ 92 ] TTCTTAAATTGGAGCCCCAGATGCAG>
      |||
MSRVqPCR p TTCTTCAAATGGAGCCCCAGATGCAG

36. DNA-H1_9 130      120      110
[ 92 ] <TTCTTAAATTGGAGCCCCAGATGCAG
      |||
MSRVqPCR p TTCTTCAAATGGAGCCCCAGATGCAG
```

Figure S1C: BD RNA

```

MSRVqPCR p      10      20
                TTCTTCAAATGGAGCCCAGATGCAG
                AAGAAAGTTTACCTCGGGGTCTACGTC

1. RNA70_10.    40      50
[ 104 ]        TTCTTCAAATGGAGCCCAGATGCAG>
                |||
MSRVqPCR p      TTCTTCAAATGGAGCCCAGATGCAG

2. RNA70_13.    40      50
[ 104 ]        TTCTTCAAATGGAGCCCAGATGCAG>
                |||
MSRVqPCR p      TTCTTCAAATGGAGCCCAGATGCAG

3. RNA70_15.    40      50
[ 104 ]        TTCTTCAAATGGAGCCCAGATGCAG>
                |||
MSRVqPCR p      TTCTTCAAATGGAGCCCAGATGCAG

4. RNA70_16.    40      50
[ 104 ]        TTCTTCAAATGGAGCCCAGATGCAG>
                |||
MSRVqPCR p      TTCTTCAAATGGAGCCCAGATGCAG

5. RNA71_3.n     40      50
[ 104 ]        TTCTTCAAATGGAGCCCAGATGCAG>
                |||
MSRVqPCR p      TTCTTCAAATGGAGCCCAGATGCAG

6. RNA71_6.n     40      50
[ 104 ]        TTCTTCAAATGGAGCCCAGATGCAG>
                |||
MSRVqPCR p      TTCTTCAAATGGAGCCCAGATGCAG

7. RNA71_9.n     40      50
[ 104 ]        TTCTTCAAATGGAGCCCAGATGCAG>
                |||
MSRVqPCR p      TTCTTCAAATGGAGCCCAGATGCAG

8. RNA71_16.     40      50
[ 100 ]        NTCTTCAAATGGAGCCCAGATGCA->
                |||
MSRVqPCR p      TTCTTCAAATGGAGCCCAGATGCA

9. RNA71_7.n0    50      60
[ 100 ]        CTCTTCAAATGGAGCCCAGATGCA->
                |||
MSRVqPCR p      TTCTTCAAATGGAGCCCAGATGCA

10. RNA66_1.     40      50
[ 98 ]         TTCTTCAAATGGATCCCAGATGCAG>
                |||
MSRVqPCR p      TTCTTCAAATGGAGCCCAGATGCAG

11. RNA66_10    130     120     110
[ 98 ]        <TTCTTCAAATGGAACCCAGATGCAG
                |||
MSRVqPCR p      TTCTTCAAATGGAGCCCAGATGCAG

12. RNA66_12     40      50
[ 98 ]        TTCTTCAAATGGAACCCAGATGCAG>
                |||
MSRVqPCR p      TTCTTCAAATGGAGCCCAGATGCAG

13. RNA66_15    130     120     110
[ 98 ]        <TTCTTCAAATGGAACCCAGATGCAG
                |||
MSRVqPCR p      TTCTTCAAATGGAGCCCAGATGCAG

14. RNA66_16     40      50
[ 98 ]        TTCTTCAAATGGAACCCAGATGCAG>
                |||
MSRVqPCR p      TTCTTCAAATGGAGCCCAGATGCAG

15. RNA66_2.     40      50
[ 98 ]        TTCTTCAAATGGAACCCAGATGCAG>
                |||
MSRVqPCR p      TTCTTCAAATGGAGCCCAGATGCAG

16. RNA66_5.    130     120     110
[ 98 ]        <TTCTTCAAATGGAACCCAGATGCAG
                |||
MSRVqPCR p      TTCTTCAAATGGAGCCCAGATGCAG

17. RNA66_6.     40      50
[ 98 ]        TTCTTCAAATGGAACCCAGATGCAG>
                |||
MSRVqPCR p      TTCTTCAAATGGAGCCCAGATGCAG

18. RNA66_7.    130     120     110
[ 98 ]        <TTCTTCAAATGGAACCCAGATGCAG
                |||
MSRVqPCR p      TTCTTCAAATGGAGCCCAGATGCAG
    
```



```

19. RNA66_8.      40      50
[ 98 ] TTCTTCAAATGGAACCCAGATGCAG>
      |||
MSRVqPCR p TTCTTCAAATGGAGCCCAGATGCAG

20. RNA70_1.130  120      110
[ 98 ] <TTCTTCAAATGGAACCCAGATGCAG
      |||
MSRVqPCR p TTCTTCAAATGGAGCCCAGATGCAG

21. RNA70_12     40      50
[ 98 ] TTCTTCAAATGGAACCCAGATGCAG>
      |||
MSRVqPCR p TTCTTCAAATGGAGCCCAGATGCAG

22. RNA70_14     40      50
[ 98 ] TTCTTCAAATGGAACCCAGATGCAG>
      |||
MSRVqPCR p TTCTTCAAATGGAGCCCAGATGCAG

23. RNA70_4.     320     330
[ 98 ] TTCTTCAAATGGAACCCAGATGCAG>
      |||
MSRVqPCR p TTCTTCAAATGGAGCCCAGATGCAG

24. RNA70_5.     40      50
[ 98 ] TTCTTCAAATGGAACCCAGATGCAG>
      |||
MSRVqPCR p TTCTTCAAATGGAGCCCAGATGCAG

25. RNA70_6.     40      50
[ 98 ] TTCTTCAAATGGAACCCAGATGCAG>
      |||
MSRVqPCR p TTCTTCAAATGGAGCCCAGATGCAG

26. RNA70_7.     40      50
[ 98 ] TTCTTCAAATGGAACCCAGATGCAG>
      |||
MSRVqPCR p TTCTTCAAATGGAGCCCAGATGCAG

27. RNA70_9.    130     120     110
[ 98 ] <TTCTTCAAATGGAACCCAGATGCAG
      |||
MSRVqPCR p TTCTTCAAATGGAGCCCAGATGCAG

28. RNA71_12    40      50     60
[ 98 ] TTCTTCAAATGGAACCCAGATGCAG>
      |||
MSRVqPCR p TTCTTCAAATGGAGCCCAGATGCAG

29. RNA71_5.     40      50
[ 98 ] TTCTTCAAATGGAACCCAGATGCAG>
      |||
MSRVqPCR p TTCTTCAAATGGAGCCCAGATGCAG

30. RNA66_13    40      50
[ 92 ] TTCTTCAAATGGAACCCAGATGCAG>
      |||
MSRVqPCR p TTCTTCAAATGGAGCCCAGATGCAG

31. RNA66_3.     40      50
[ 92 ] TTCTTCAAATGGAACCCAGATGCAG>
      |||
MSRVqPCR p TTCTTCAAATGGAGCCCAGATGCAG

32. RNA66_9.     40      50
[ 92 ] TTCTTCAAATGGAACCCAGATGCAG>
      |||
MSRVqPCR p TTCTTCAAATGGAGCCCAGATGCAG

33. RNA71_11    40      50
[ 92 ] TTCTTCAAATGGAACCCAGATGCAG>
      |||
MSRVqPCR p TTCTTCAAATGGAGCCCAGATGCAG

34. RNA71_15    40      50
[ 92 ] TTCTTCAAATGGAACCCAGATGCAG>
      |||
MSRVqPCR p TTCTTCAAATGGAGCCCAGATGCAG

35. RNA71_8.    130     120     110
[ 92 ] <TTCTTCAAATGGAACCCAGATGCAG
      |||
MSRVqPCR p TTCTTCAAATGGAGCCCAGATGCAG

36. RNA70_11    320     330
[ 88 ] TTCTTCAAATGGAGCCCAGATGCAG>
      |||
MSRVqPCR p TTCTTCAAATGGAGCCCAGATGCAG

37. RNA70_2.     40      50
[ 88 ] TTCTTCAAATGGAGCCCAGATGCAG>
      |||
MSRVqPCR p TTCTTCAAATGGAGCCCAGATGCAG

38. RNA70_8.     320     330
[ 88 ] TTCTTCAAATGGAGCCCAGATGCAG>
      |||
MSRVqPCR p TTCTTCAAATGGAGCCCAGATGCAG

39. RNA71_4.130  120     110
[ 88 ] <TTCTTCAAATGGAGCCCAGATGCAG
      |||
MSRVqPCR p TTCTTCAAATGGAGCCCAGATGCAG

```

Figure S1D: BD DNA

```

MSRVqPCR p   TTCTTCAAATGGAGCCCCAGATGCAG
              10      20
              AAGAAGTTTACCTCGGGTCTACGTC

1. DNA66_14.  40      50
[ 104 ]      TTCTTCAAATGGAGCCCCAGATGCAG>
              |||
MSRVqPCR p   TTCTTCAAATGGAGCCCCAGATGCAG

2. DNA66_4.n  40      50
[ 104 ]      TTCTTCAAATGGAGCCCCAGATGCAG>
              |||
MSRVqPCR p   TTCTTCAAATGGAGCCCCAGATGCAG

3. DNA66_7.n  40      50
[ 104 ]      TTCTTCAAATGGAGCCCCAGATGCAG>
              |||
MSRVqPCR p   TTCTTCAAATGGAGCCCCAGATGCAG

4. DNA66_9.n  40      50
[ 104 ]      TTCTTCAAATGGAGCCCCAGATGCAG>
              |||
MSRVqPCR p   TTCTTCAAATGGAGCCCCAGATGCAG

5. DNA70_9.n  40      50
[ 104 ]      TTCTTCAAATGGAGCCCCAGATGCAG>
              |||
MSRVqPCR p   TTCTTCAAATGGAGCCCCAGATGCAG

6. DNA66_5.n  40      50
[ 98 ]      TTCTTCAAATGGAGCCCCAGATGCAG>
              |||
MSRVqPCR p   TTCTTCAAATGGAGCCCCAGATGCAG

7. DNA70_11. 130     120     110
[ 98 ]      <TTCTTCAAATGGAAACCCAGATGCAG
              |||
MSRVqPCR p   TTCTTCAAATGGAGCCCCAGATGCAG

8. DNA70_12.  40      50
[ 98 ]      TTCTTCAAATGGAAACCCAGATGCAG>
              |||
MSRVqPCR p   TTCTTCAAATGGAGCCCCAGATGCAG

9. DNA70_5.n  40      50
[ 98 ]      TTCTTCAAATGGAGCCCCAGATGCAG>
              |||
MSRVqPCR p   TTCTTCAAATGGAGCCCCAGATGCAG

10. DNA71_12  40      50
[ 98 ]      TTCTTCAAATGGAAACCCAGATGCAG>
              |||
MSRVqPCR p   TTCTTCAAATGGAGCCCCAGATGCAG

11. DNA66_8.  40      50
[ 96 ]      TTCTTCAAATGGAGCCCCAGATG-AG>
              |||
MSRVqPCR p   TTCTTCAAATGGAGCCCCAGATGCAG

12. DNA70_2.  40      50
[ 96 ]      TTCTTCAAATGGAGCCCCAGATG-AG>
              |||
MSRVqPCR p   TTCTTCAAATGGAGCCCCAGATGCAG

13. DNA71_15  40      50
[ 96 ]      TTCTTCAAATGGAGCCCCAGATG-AG>
              |||
MSRVqPCR p   TTCTTCAAATGGAGCCCCAGATGCAG

14. DNA71_4.  40      50
[ 96 ]      TTCTTCAAATGGAGCCCCAGATG-AG>
              |||
MSRVqPCR p   TTCTTCAAATGGAGCCCCAGATGCAG

15. DNA71_6.  40      50
[ 96 ]      TTCTTCAAATGGAGCCCCAGATG-AG>
              |||
MSRVqPCR p   TTCTTCAAATGGAGCCCCAGATGCAG

16. DNA66_11  40      50
[ 92 ]      TTCTTAAATTGGAGCCCCAGATGCAG>
              |||
MSRVqPCR p   TTCTTCAAATGGAGCCCCAGATGCAG

17. DNA66_13  40      50
[ 92 ]      TTCTTAAATTGGAGCCCCAGATGCAG>
              |||
MSRVqPCR p   TTCTTCAAATGGAGCCCCAGATGCAG

18. DNA66_15  40      50
[ 92 ]      TTCTTAAATTGGAGCCCCAGATGCAG>
              |||
MSRVqPCR p   TTCTTCAAATGGAGCCCCAGATGCAG

```

```

19. DNA70_1. 130      120      110
[ 92 ] <TTCTTAAATTGGAGCCCCAGATGCAG
      ||||| || |||||
MSRVqPCR p TTCTTCAAATGGAGCCCCAGATGCAG

20. DNA70_10. 40      50
[ 92 ] TTCTTAAATTGGAGCCCCAGATGCAG>
      ||||| || |||||
MSRVqPCR p TTCTTCAAATGGAGCCCCAGATGCAG

21. DNA70_13. 130      120      110
[ 92 ] <TTCTTAAATTGGAGCCCCAGATGCAG
      ||||| || |||||
MSRVqPCR p TTCTTCAAATGGAGCCCCAGATGCAG

22. DNA70_16. 40      50
[ 92 ] TTCTTAAATTGGAGCCCCAGATGCAG>
      ||||| || |||||
MSRVqPCR p TTCTTCAAATGGAGCCCCAGATGCAG

23. DNA70_4.130      120      110
[ 92 ] <TTCTTAAATTGGAGCCCCAGATGCAG
      ||||| || |||||
MSRVqPCR p TTCTTCAAATGGAGCCCCAGATGCAG

24. DNA70_8. 130      120      110
[ 92 ] <TTCTTAAATTGGAGCCCCAGATGCAG
      ||||| || |||||
MSRVqPCR p TTCTTCAAATGGAGCCCCAGATGCAG

25. DNA71_10. 130      120      110
[ 92 ] <TTCTTAAATTGGAGCCCCAGATGCAG
      ||||| || |||||
MSRVqPCR p TTCTTCAAATGGAGCCCCAGATGCAG

26. DNA71_11. 40      50
[ 92 ] TTCTTAAATTGGAGCCCCAGATGCAG>
      ||||| || |||||
MSRVqPCR p TTCTTCAAATGGAGCCCCAGATGCAG

27. DNA71_13. 40      50
[ 92 ] TTCTTAAATTGGAGCCCCAGATGCAG>
      ||||| || |||||
MSRVqPCR p TTCTTCAAATGGAGCCCCAGATGCAG

28. DNA71_14. 40      50
[ 92 ] TTCTTAAATTGGAGCCCCAGATGCAG>
      ||||| || |||||
MSRVqPCR p TTCTTCAAATGGAGCCCCAGATGCAG

29. DNA71_2. 130      120      110
[ 92 ] <TTCTTAAATTGGAGCCCCAGATGCAG
      ||||| || |||||
MSRVqPCR p TTCTTCAAATGGAGCCCCAGATGCAG

30. DNA71_3. 40      50
[ 92 ] TTCTTAAATTGGAGCCCCAGATGCAG>
      ||||| || |||||
MSRVqPCR p TTCTTCAAATGGAGCCCCAGATGCAG

31. DNA71_5. 40      50
[ 92 ] TTCTTAAATTGGAGCCCCAGATGCAG>
      ||||| || |||||
MSRVqPCR p TTCTTCAAATGGAGCCCCAGATGCAG

32. DNA71_7. 40      50
[ 92 ] TTCTTAAATTGGAGCCCCAGATGCAG>
      ||||| || |||||
MSRVqPCR p TTCTTCAAATGGAGCCCCAGATGCAG

33. DNA71_8. 40      50
[ 92 ] TTCTTAAATTGGAGCCCCAGATGCAG>
      ||||| || |||||
MSRVqPCR p TTCTTCAAATGGAGCCCCAGATGCAG

```

Figure S1E: SZ RNA

```

MSRVqPCR p   TTCTTCAAATGGAGCCCAGATGCAG
              10      20
              AAGAAGTTTACCTCGGGTCTACGTC

1. RNA11_10.   40      50
[ 104 ]   TTCTTCAAATGGAGCCCAGATGCAG>
           |||
MSRVqPCR p   TTCTTCAAATGGAGCCCAGATGCAG

2. RNA11_11.   40      50
[ 104 ]   TTCTTCAAATGGAGCCCAGATGCAG>
           |||
MSRVqPCR p   TTCTTCAAATGGAGCCCAGATGCAG

3. RNA11_12.   40      50
[ 104 ]   TTCTTCAAATGGAGCCCAGATGCAG>
           |||
MSRVqPCR p   TTCTTCAAATGGAGCCCAGATGCAG

4. RNA11_14.   40      50
[ 104 ]   TTCTTCAAATGGAGCCCAGATGCAG>
           |||
MSRVqPCR p   TTCTTCAAATGGAGCCCAGATGCAG

5. RNA11_15.   40      50
[ 104 ]   TTCTTCAAATGGAGCCCAGATGCAG>
           |||
MSRVqPCR p   TTCTTCAAATGGAGCCCAGATGCAG

6. RNA11_2.n   40      50
[ 104 ]   TTCTTCAAATGGAGCCCAGATGCAG>
           |||
MSRVqPCR p   TTCTTCAAATGGAGCCCAGATGCAG

7. RNA11_3.n   40      50
[ 104 ]   TTCTTCAAATGGAGCCCAGATGCAG>
           |||
MSRVqPCR p   TTCTTCAAATGGAGCCCAGATGCAG

8. RNA11_6.n   40      50
[ 104 ]   TTCTTCAAATGGAGCCCAGATGCAG>
           |||
MSRVqPCR p   TTCTTCAAATGGAGCCCAGATGCAG

9. RNA11_8.n   40      50
[ 104 ]   TTCTTCAAATGGAGCCCAGATGCAG>
           |||
MSRVqPCR p   TTCTTCAAATGGAGCCCAGATGCAG

10. RNA11_9.   40      50
[ 104 ]   TTCTTCAAATGGAGCCCAGATGCAG>
           |||
MSRVqPCR p   TTCTTCAAATGGAGCCCAGATGCAG

11. RNA16_10   40      50
[ 104 ]   TTCTTCAAATGGAGCCCAGATGCAG>
           |||
MSRVqPCR p   TTCTTCAAATGGAGCCCAGATGCAG

12. RNA16_2.   40      50
[ 104 ]   TTCTTCAAATGGAGCCCAGATGCAG>
           |||
MSRVqPCR p   TTCTTCAAATGGAGCCCAGATGCAG

13. RNA16_3.   40      50
[ 104 ]   TTCTTCAAATGGAGCCCAGATGCAG>
           |||
MSRVqPCR p   TTCTTCAAATGGAGCCCAGATGCAG

14. RNA16_9.   40      50
[ 104 ]   TTCTTCAAATGGAGCCCAGATGCAG>
           |||
MSRVqPCR p   TTCTTCAAATGGAGCCCAGATGCAG

15. RNA23_12   40      50
[ 104 ]   TTCTTCAAATGGAGCCCAGATGCAG>
           |||
MSRVqPCR p   TTCTTCAAATGGAGCCCAGATGCAG

16. RNA23_16   40      50
[ 104 ]   TTCTTCAAATGGAGCCCAGATGCAG>
           |||
MSRVqPCR p   TTCTTCAAATGGAGCCCAGATGCAG

17. RNA23_2.   40      50
[ 104 ]   TTCTTCAAATGGAGCCCAGATGCAG>
           |||
MSRVqPCR p   TTCTTCAAATGGAGCCCAGATGCAG

18. RNA23_4.   40      50
[ 104 ]   TTCTTCAAATGGAGCCCAGATGCAG>
           |||
MSRVqPCR p   TTCTTCAAATGGAGCCCAGATGCAG

```

```

19. RNA23_6.      40      50
[ 104 ] TTCTTCAAATGGAGCCCCAGATGCAG>
          |||
MSRVqPCR p TTCTTCAAATGGAGCCCCAGATGCAG

20. RNA23_9.      40      50
[ 104 ] TTCTTCAAATGGAGCCCCAGATGCAG>
          |||
MSRVqPCR p TTCTTCAAATGGAGCCCCAGATGCAG

21. RNA32_10     40      50
[ 104 ] TTCTTCAAATGGAGCCCCAGATGCAG>
          |||
MSRVqPCR p TTCTTCAAATGGAGCCCCAGATGCAG

22. RNA32_11     40      50
[ 104 ] TTCTTCAAATGGAGCCCCAGATGCAG>
          |||
MSRVqPCR p TTCTTCAAATGGAGCCCCAGATGCAG

23. RNA32_12     40      50
[ 104 ] TTCTTCAAATGGAGCCCCAGATGCAG>
          |||
MSRVqPCR p TTCTTCAAATGGAGCCCCAGATGCAG

24. RNA32_13     40      50
[ 104 ] TTCTTCAAATGGAGCCCCAGATGCAG>
          |||
MSRVqPCR p TTCTTCAAATGGAGCCCCAGATGCAG

25. RNA32_14     40      50
[ 104 ] TTCTTCAAATGGAGCCCCAGATGCAG>
          |||
MSRVqPCR p TTCTTCAAATGGAGCCCCAGATGCAG

26. RNA32_16     40      50
[ 104 ] TTCTTCAAATGGAGCCCCAGATGCAG>
          |||
MSRVqPCR p TTCTTCAAATGGAGCCCCAGATGCAG

27. RNA32_3.     40      50
[ 104 ] TTCTTCAAATGGAGCCCCAGATGCAG>
          |||
MSRVqPCR p TTCTTCAAATGGAGCCCCAGATGCAG

28. RNA32_4.     130     120     110
[ 104 ] <TTCTTCAAATGGAGCCCCAGATGCAG
          |||
MSRVqPCR p TTCTTCAAATGGAGCCCCAGATGCAG

29. RNA32_5.     40      50
[ 104 ] TTCTTCAAATGGAGCCCCAGATGCAG>
          |||
MSRVqPCR p TTCTTCAAATGGAGCCCCAGATGCAG

30. RNA32_7.     40      50
[ 104 ] TTCTTCAAATGGAGCCCCAGATGCAG>
          |||
MSRVqPCR p TTCTTCAAATGGAGCCCCAGATGCAG

31. RNA32_8.     40      50
[ 104 ] TTCTTCAAATGGAGCCCCAGATGCAG>
          |||
MSRVqPCR p TTCTTCAAATGGAGCCCCAGATGCAG

32. RNA32_9.     40      50
[ 104 ] TTCTTCAAATGGAGCCCCAGATGCAG>
          |||
MSRVqPCR p TTCTTCAAATGGAGCCCCAGATGCAG

33. RNA23_10     40      50
[ 100 ] TTCTTCAAATGGAGCCCCAGATGCA>
          |||
MSRVqPCR p TTCTTCAAATGGAGCCCCAGATGCA

34. RNA11_16     40      50
[ 98 ] TTCTTCAAATGGAGCCCCAGAGGCAG>
          |||
MSRVqPCR p TTCTTCAAATGGAGCCCCAGATGCAG

35. RNA11_4.     40      50
[ 98 ] TTCTTCAAATGGAGCCCCAGAGGCAG>
          |||
MSRVqPCR p TTCTTCAAATGGAGCCCCAGATGCAG

36. RNA23_3.     40      50
[ 98 ] TTCTTCAAATGGAGCTCCAGATGCAG>
          |||
MSRVqPCR p TTCTTCAAATGGAGCCCCAGATGCAG

37. RNA23_5.     40      50
[ 98 ] TTCTTCAAATGGAGCCCCAGAGGCAG>
          |||
MSRVqPCR p TTCTTCAAATGGAGCCCCAGATGCAG

38. RNA16_11     40      50
[ 88 ] TTCTTCAAATGGAGCCCCAGA--CAG>
          |||
MSRVqPCR p TTCTTCAAATGGAGCCCCAGATGCAG

```

Figure S1F: SZ DNA

```

MSRVqPCR p   TTCTTCAAATGGAGCCCAGATGCAG
              10      20
              AAGAAGTTTACCTCGGGTCTACGTC

1. DNA16_1.n   40      50
[ 104 ]       TTCTTCAAATGGAGCCCAGATGCAG>
              |||
MSRVqPCR p   TTCTTCAAATGGAGCCCAGATGCAG

2. DNA23_11.  40      50
[ 104 ]       TTCTTCAAATGGAGCCCAGATGCAG>
              |||
MSRVqPCR p   TTCTTCAAATGGAGCCCAGATGCAG

3. DNA23_15.  40      50
[ 104 ]       TTCTTCAAATGGAGCCCAGATGCAG>
              |||
MSRVqPCR p   TTCTTCAAATGGAGCCCAGATGCAG

4. DNA16_11. 130     120     110
[ 98 ]       <TTCTTCAAATGGAGCCCAGATGCAG
              |||
MSRVqPCR p   TTCTTCAAATGGAGCCCAGATGCAG

5. DNA23_9.n  40      50
[ 98 ]       TTCTTCAAATGGAGCCCAGATGCAG>
              |||
MSRVqPCR p   TTCTTCAAATGGAGCCCAGATGCAG

6. DNA32_1.n  40      50
[ 98 ]       TTCTTCAAATGGAGCCCAGAGGCAG>
              |||
MSRVqPCR p   TTCTTCAAATGGAGCCCAGATGCAG

7. DNA11_2.n  40      50
[ 96 ]       TTCTTCAAATGGAGCCCAGATG-AG>
              |||
MSRVqPCR p   TTCTTCAAATGGAGCCCAGATGCAG

8. DNA11_3.n  40      50
[ 96 ]       TTCTTCAAATGGAGCCCAGATG-AG>
              |||
MSRVqPCR p   TTCTTCAAATGGAGCCCAGATGCAG

9. DNA11_6.n 130     120     110
[ 96 ]       <TTCTTCAAATGGAGCCCAGATG-AG
              |||
MSRVqPCR p   TTCTTCAAATGGAGCCCAGATGCAG

10. DNA-VIP3  40      50
[ 92 ]       TTCTTAAATTGGAGCCCAGATGCAG>
              |||
MSRVqPCR p   TTCTTCAAATGGAGCCCAGATGCAG

11. DNA11_1.  40      50
[ 92 ]       TTCTTCAAATTGAGCCTCAGATGCAG>
              |||
MSRVqPCR p   TTCTTCAAATGGAGCCCAGATGCAG

12. DNA11_12  40      50
[ 92 ]       TTCTTCAAATTGAGCCTCAGATGCAG>
              |||
MSRVqPCR p   TTCTTCAAATGGAGCCCAGATGCAG

13. DNA11_14 130     120     110
[ 92 ]       <TTCTTAAATTGGAGCCCAGATGCAG
              |||
MSRVqPCR p   TTCTTCAAATGGAGCCCAGATGCAG

14. DNA11_15  40      50
[ 92 ]       TTCTTAAATTGGAGCCCAGATGCAG>
              |||
MSRVqPCR p   TTCTTCAAATGGAGCCCAGATGCAG

15. DNA11_16 130     120     110
[ 92 ]       <TTCTTCAAATTGAGCCTCAGATGCAG
              |||
MSRVqPCR p   TTCTTCAAATGGAGCCCAGATGCAG

16. DNA11_7.  40      50
[ 92 ]       TTCTTAAATTGGAGCCCAGATGCAG>
              |||
MSRVqPCR p   TTCTTCAAATGGAGCCCAGATGCAG

17. DNA11_8.  40      50
[ 92 ]       TTCTTAAATTGGAGCCCAGATGCAG>
              |||
MSRVqPCR p   TTCTTCAAATGGAGCCCAGATGCAG

18. DNA16_8. 130     120     110
[ 92 ]       <TTCTTAAATTGGAGCCCAGATGCAG
              |||
MSRVqPCR p   TTCTTCAAATGGAGCCCAGATGCAG

```

```
19. DNA23_14. 40 50
[ 92 ] TTCTTCAAATTGGAGCCCAGATGCAG>
      |||
MSRVqPCR p TTCTTCAAATGGAGCCCAGATGCAG

20. DNA23_2. 130 120 110
[ 92 ] <TTCTTAAATTGGAGCCCAGATGCAG
      |||
MSRVqPCR p TTCTTCAAATGGAGCCCAGATGCAG

21. DNA23_4. 40 50
[ 92 ] TTCTTAAATTGGAGCCCAGATGCAG>
      |||
MSRVqPCR p TTCTTCAAATGGAGCCCAGATGCAG

22. DNA23_8. 130 120 110
[ 92 ] <TTCTTAAATTGGAGCCCAGATGCAG
      |||
MSRVqPCR p TTCTTCAAATGGAGCCCAGATGCAG

23. DNA32_12. 40 50
[ 92 ] TTCTTAAATTGGAGCCCAGATGCAG>
      |||
MSRVqPCR p TTCTTCAAATGGAGCCCAGATGCAG

24. DNA32_15. 130 120 110
[ 92 ] <TTCTTAAATTGGAGCCCAGATGCAG
      |||
MSRVqPCR p TTCTTCAAATGGAGCCCAGATGCAG

25. DNA32_2. 40 50
[ 92 ] TTCTTAAATTGGAGCCCAGATGCAG>
      |||
MSRVqPCR p TTCTTCAAATGGAGCCCAGATGCAG

26. DNA32_3. 40 50
[ 92 ] TTCTTCAAATTGAGCCTCAGATGCAG>
      |||
MSRVqPCR p TTCTTCAAATGGAGCCCAGATGCAG

27. DNA32_7. 40 50
[ 92 ] TTCTTAAATTGGAGCCCAGATGCAG>
      |||
MSRVqPCR p TTCTTCAAATGGAGCCCAGATGCAG

28. DNA32_8. 40 50
[ 92 ] TTCTTAAATTGGAGCCCAGATGCAG>
      |||
MSRVqPCR p TTCTTCAAATGGAGCCCAGATGCAG
```

Figure S2: Phylogenetic tree representation of aligned clones with related HERV-W and distant HERV-K env gene sequences:

Figure S2A: RNA and DNA clones from BD

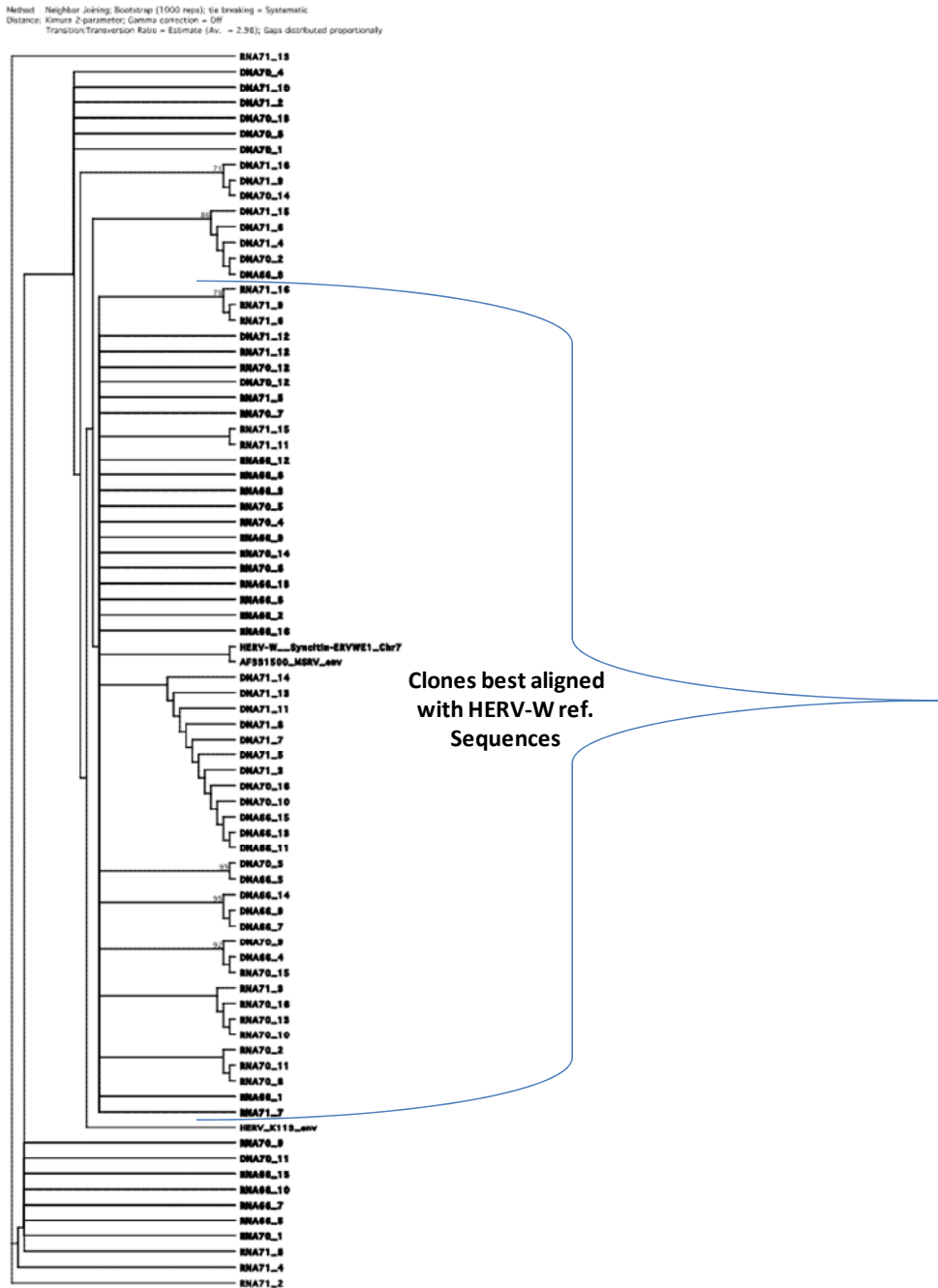


Figure S2B: RNA and DNA clones from SZ

Method: Neighbor Joining; Bootstrap (1000 reps); tie breaking = Systematic
Distance: Kimura 2-parameter; Gamma correction = Off
Transition:Transversion Ratio = Estimate (Av. = 2.75); Gaps distributed proportionally

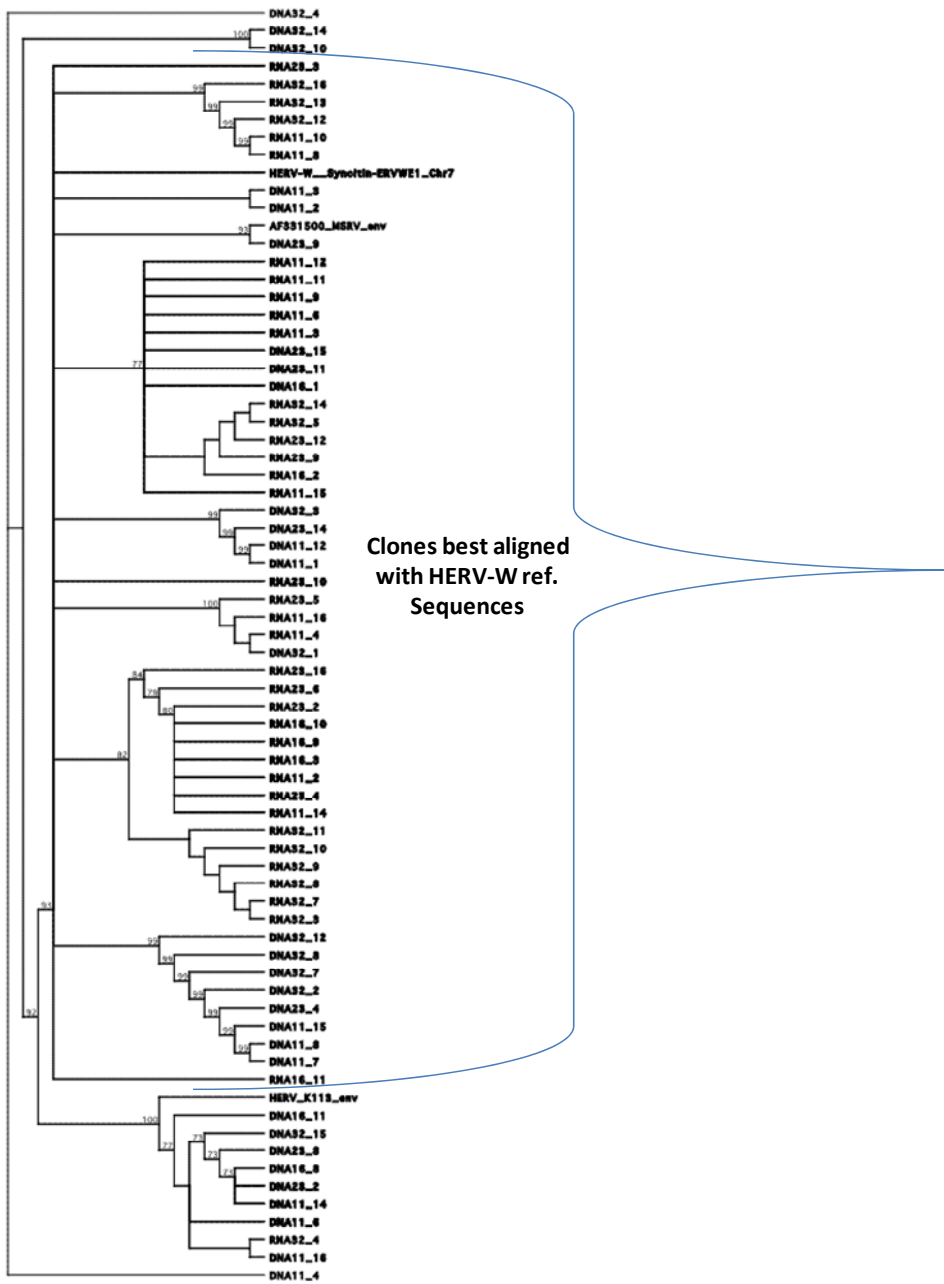


Figure S2C: RNA and DNA clones from HC

Method: Neighbor Joining; Bootstrap (1000 reps); tree breaking = Systematic
Distance: Kimura 2-parameter; Gamma correction = Off
Transition/Transversion Ratio = Estimate (Av. = 3.02); Gaps distributed proportionally

