



HAL
open science

Contribution in analyzing directional propagation flow in EEG recordings investigating entropic methods and realistic physiological models

Chunfeng Yang, Régine Le Bouquin Jeannès, Jean-Jacques Bellanger, Fabrice
Wendling, Huazhong Shu

► **To cite this version:**

Chunfeng Yang, Régine Le Bouquin Jeannès, Jean-Jacques Bellanger, Fabrice Wendling, Huazhong Shu. Contribution in analyzing directional propagation flow in EEG recordings investigating entropic methods and realistic physiological models. Biomedical Engineering and Informatics 2011, Oct 2011, Shanghai, China. pp.703 - 707, 10.1109/BMEI.2011.6098416 . inserm-00770251

HAL Id: inserm-00770251

<https://inserm.hal.science/inserm-00770251>

Submitted on 4 Jan 2013

HAL is a multi-disciplinary open access archive for the deposit and dissemination of scientific research documents, whether they are published or not. The documents may come from teaching and research institutions in France or abroad, or from public or private research centers.

L'archive ouverte pluridisciplinaire **HAL**, est destinée au dépôt et à la diffusion de documents scientifiques de niveau recherche, publiés ou non, émanant des établissements d'enseignement et de recherche français ou étrangers, des laboratoires publics ou privés.

Contribution in analyzing directional propagation flow in EEG recordings investigating entropic methods and realistic physiological models

Chunfeng Yang^{1,2,4}, Régine Le Bouquin Jeannès^{1,2,4},
Jean-Jacques Bellanger^{1,2,4}, Fabrice Wendling^{1,2,4}

¹U642, INSERM

²LTSI, Université de Rennes 1
Rennes, France

⁴Centre de Recherche en Information Biomédicale sino-français (CRIBs)

Huazhong Shu^{3,4}, *Senior Member, IEEE*

³Laboratory of Image Science and Technology, School of
Computer Science and Engineering
Southeast University
Nanjing, China

Abstract—Our objective is to analyze EEG signals recorded with depth electrodes during seizures in patients with drug-resistant epilepsy. Usually, different phases are observed during the seizure process, including a fast onset activity (FOA). We aim to determine how cerebral structures get involved during this FOA, in particular whether some structures can “drive” some other structures. We compare a transfer entropy based measure with a measure related to linear Granger causality index to detect causal interdependences in multivariate signals generated either by a linear autoregressive model or by a physiology-based model of coupled neuronal populations. Experimental simulation results support the relevance of the new measure for characterizing the information flow for direct and indirect relations.

Keywords - EEG signal; transfer entropy; physiology-based model; causality

I. INTRODUCTION

Epilepsy is a neurological disorder characterized by repetitive seizures. In 30% of cases, seizures remain drug-resistant and considerably affect all aspects of the patient’s life [1]. Drug-resistant epilepsies are often partial, with an epileptogenic zone (EZ) located in a relatively circumscribed brain area. For these partial epilepsies, surgical treatment can be considered. The difficulty that arises is then to determine the organization of the EZ and, thus, the part of the brain that should be excised to remove seizures. In some patients, the pre-surgical evaluation may include recording of intracerebral electroencephalographic (iEEG) signals using intracerebral depth electrodes. The analysis of such signals which remains a difficult task is aimed at determining which sites of the brain belong to the EZ, prior to surgery. In this context, signal processing techniques can provide some quantitative information that cannot be easily obtained by visual inspection. This is typically the case of correlation (wide-sense) measures that proved useful for assessment of functional couplings between distant brain sites. Besides functional connectivity, effective connectivity provides complementary information on the directionality of couplings, *i.e.* the way one neural population does influence another one. A concept of causality between time series was proposed and formulated by Granger [2] and led to the so-called Granger Causality Index (GCI).

Recently, a theoretical information measure named Transfer Entropy (TE) was proposed to identify the direction of the information flow and to quantify the strength of coupling between complex systems [3]. This “model-free” technique is based on the transition probabilities between states of the considered systems from output signals. This method has been applied and tested in some nonlinear benchmark models and real EEG signals with no ground reference [4, 5]. In this paper, we derive a transfer entropy based measure (named DTE) and compare it to a Linear Granger Causality Index based measure (named DLGCI) on the basis of a physiologically-plausible model used as ground-truth.

II. METHODS AND MATERIALS

A. Linear Granger Causality Index

Granger causality is classically tested in the context of linear regression models [2]. Let X and Y be two random zero-mean signals whose time observations (realizations) are denoted $x(t)$ and $y(t)$, $t=1,2,\dots,T$, where T is the signal length. If we model independently each observation $x(t)$ and $y(t)$ by introducing an univariate AR model of order p [6], we have

$$x(t) = \sum_{k=1}^p \alpha_x(k)x(t-k) + u_x(t) \quad (1)$$

$$y(t) = \sum_{k=1}^p \alpha_y(k)y(t-k) + u_y(t) \quad (2)$$

where $u_x(t)$ and $u_y(t)$ are white Gaussian noises realizations. If we model conjointly the pair $(x(t), y(t))$ by bivariate AR models of order p , we write

$$x(t) = \sum_{k=1}^p \alpha_{xx}(k)x(t-k) + \sum_{k=1}^p \alpha_{xy}(k)y(t-k) + w_x(t) \quad (3)$$

$$y(t) = \sum_{k=1}^p \alpha_{yx}(k)x(t-k) + \sum_{k=1}^p \alpha_{yy}(k)y(t-k) + w_y(t) \quad (4)$$

where $w_x(t)$ and $w_y(t)$ are white Gaussian noises realizations. The LGCI from y to x is evaluated by

$$LGCI_{y \rightarrow x} = \ln \frac{\text{var}(u_x(t))}{\text{var}(w_x(t))}. \quad (5)$$

Considering the more complicated issue of real data [7], we define a selective index of the flow direction, named DLGCI, as

$$DLGCI_{y \rightarrow x} = \frac{LGCI_{y \rightarrow x} - LGCI_{x \rightarrow y}}{|LGCI_{y \rightarrow x}| + |LGCI_{x \rightarrow y}|} \quad (6)$$

if the denominator is non null. Otherwise, this index is set to zero.

B. Transfer Entropy

In the sequel, $u_n^{(p)}$ denotes a p -tuple $[u_n, u_{n-1}, \dots, u_{n-p+1}]$.

Considering a k^{th} -order Markov process X , the conditional probability measures (continuous or discrete) are such that:

$$\forall k' > k: P_{X_{n+1}/X_n^{(k)}=x_n^{(k)}}(dx_{n+1}) = P_{X_{n+1}/X_n^{(k')}=x_n^{(k')}, Y_n^{(l)}=y_n^{(l)}}(dx_{n+1}). \quad (7)$$

The relation in (7) can be extended to the case of ‘‘Markov interdependence’’ of two random processes X and Y . In the same way, the absence of information flow from Y to X can be formalized by

$$P_{X_{n+1}/X_n^{(k)}=x_n^{(k)}}(\cdot) = P_{X_{n+1}/X_n^{(k)}=x_n^{(k)}, Y_n^{(l)}=y_n^{(l)}}(\cdot). \quad (8)$$

So, in this absence of information flow, the Y process values $y_n^{(l)}$ have not influence on the X transition probabilities from state value $x_n^{(k)}$ to state value x_{n+1} . The deviation from this assumption can be quantified using the Kullback entropy, which leads to the definition of the transfer entropy

$$TE_{X \rightarrow Y} = \int_{\mathbb{R}^{k+l+1}} P_{X_{n+1}, X_n^{(k)}, Y_n^{(l)}}(dx_{n+1}, dx_n^{(k)}, dy_n^{(l)}) \times \log_2 \left[\frac{dP_{X_{n+1}/X_n^{(k)}=x_n^{(k)}, Y_n^{(l)}=y_n^{(l)}}}{dP_{X_{n+1}/X_n^{(k)}=x_n^{(k)}}} \right](x_{n+1}) \quad (9)$$

where the ratio in (9) corresponds to a derivative of the conditional measure in the numerator with respect to the conditional measure in the denominator. This measure is not symmetric ($TE_{X \rightarrow Y} \neq TE_{Y \rightarrow X}$). The value of k can be determined heuristically from the autocorrelation function of X . For the parameter l , a natural choice is to take $l=1$, if we consider that the current state of the driving system is sufficient to modify the dynamics of the driven one. The estimation of TE from the observations (x_n, y_n) , $n=1, \dots, N$, can be obtained [3] using a discrete kernel estimation of $(X_{n+1}, X_n^{(k)}, Y_n^{(l)})$ distribution:

$$\hat{P}(x_{n+1}, x_n^{(k)}, y_n^{(l)}) \propto \sum_m \Theta \left(\left| \begin{pmatrix} x_{n+1} - x_{m+1} \\ x_n^{(k)} - x_m^{(k)} \\ y_n^{(l)} - y_m^{(l)} \end{pmatrix} \right| - r \right) \quad (10)$$

$$\triangleq C_{n,r}, \quad n = k+1, \dots, N-1$$

which depends on a neighborhood size (radius r). Then, it can be used to compute the estimation

$$\widehat{TE}_{y \rightarrow x} = \sum_n \hat{P}(x_{n+1}, x_n^{(k)}, y_n^{(l)}) \log_2 \frac{\hat{P}(x_{n+1} | x_n^{(k)}, y_n^{(l)})}{\hat{P}(x_{n+1} | x_n^{(k)})} \quad (11)$$

Practically, the estimations of conditional probabilities in (11) are computed from estimated joint probabilities in (10).

The function $\Theta(\cdot)$ is defined by the step kernel

$\Theta(x > 0) = 1$, $\Theta(x \leq 0) = 0$; the norm $|\cdot|$ is the maximum

distance norm and the summation is performed for $m \in [k+1, \dots, N-1]$ by excluding some evident redundancies.

The value of r is chosen in the linear region of the curve $\ln C(r)$ vs. $\ln r$ obtained as an average of n over $C_{n,r}$. As previously, we define a selective index of the flow direction, named DTE, by

$$DTE_{y \rightarrow x} = \frac{TE_{y \rightarrow x} - TE_{x \rightarrow y}}{|TE_{y \rightarrow x}| + |TE_{x \rightarrow y}|} \quad (12)$$

if the denominator is non null. Otherwise, this index is set to 0.

C. Model of iEEG Signals Generation

We used a physiology-based time continuous (Stochastic Differential Equation) model to represent the electrical field activity of some distant - and possibly coupled - neuronal populations. Each of them generates a local field activity that can be converted to an iEEG signal in a proximal electrode using a quasi-static transfer function [8]. In the model, each population contains three subpopulations of neurons that mutually interact via excitatory or inhibitory feedback linking main pyramidal cells and two other types of local interneurons. Since pyramidal cells are excitatory neurons that project their axons to other areas of the brain, the model accounts for this organization by using the average pulse rate of action potentials from the main cells of one population i as an excitatory input to main cells inputs of another population j . In addition, this connection from population i to j is represented by a parameter K^{ij} which is proportional to the number of corresponding axonal links. Appropriate setting of this parameter allows for building systems where the neuronal populations are unidirectionally or bidirectionally coupled. Other introduced parameters are intra-population parameters. They include excitatory and inhibitory gains in feedback loops as well as coefficients related to the numbers of synaptic contacts between subpopulations. These parameters are adjusted to control the intrinsic activity of each population (normal background versus epileptic activity).

III. RESULTS

Simulations were carried out 100 times on 4096-point signals (which corresponds to 8 s of real EEG signals in current acquisition systems). In the following tables, the first value represents the mean of the indicator and the value in parentheses is the standard deviation. Simulation models were of two types: a “black box” linear three-population model (subsection A) and a physiological non linear three-population model (subsection B). Indices DLGCI (6) and DTE (12) were estimated for populations pairs by using LGCI and TE respectively in place of their theoretical values.

A. Linear System

For the linear stochastic system we considered, the following three signals were generated:

$$\begin{cases} x_1(t) = 0.95\sqrt{2}x_1(t-1) - 0.9025x_1(t-2) + w_1(t) \\ x_2(t) = -0.5x_1(t-1) + w_2(t) \\ x_3(t) = 0.8x_2(t-2) + w_3(t) \end{cases} \quad (13)$$

where $w_j(t)$, $j=1,2,3$, were independent white Gaussian noises with zero means and unit variances. For each pair of signals, k and l were estimated by Akaike’s criterion.

- *Results on LGCI and DLGCI*

The means and standard deviations of these indices are reported in Table I. From Table I, when a causality relation exists (e.g. $x_1 \rightarrow x_2$, $x_1 \rightarrow x_3$, $x_2 \rightarrow x_3$), the corresponding *LGCI* reveals an important value, and when there is no causal relation ($x_2 \rightarrow x_1$, $x_3 \rightarrow x_1$, $x_3 \rightarrow x_2$), the *LGCI* remains close to zero. In the same way, the selective index *DLGCI* correctly points up all information flow directions (see Table II) with the same order of magnitude.

$x_i \rightarrow x_j$	$i=1$	$i=2$	$i=3$
$j=1$	-	0.0010 (0.0019)	0.0016 (0.0023)
$j=2$	0.8802 (0.0619)	-	0.0115 (0.0071)
$j=3$	0.4644 (0.0376)	0.8782 (0.0469)	-

$x_i \rightarrow x_j$	Value
$x_1 \rightarrow x_2$	0.9977
$x_1 \rightarrow x_3$	0.9931
$x_2 \rightarrow x_3$	0.9741

- *Results on TE and DTE*

From the Section II.B, the estimation of TE also depends on the neighborhood size (radius r). The results of the mean of $C_{n,r}$ with respect to n vs. r (in \ln scale) between signals x_1 and x_2 are plotted in Fig. 1A. The corresponding TE values vs. $\ln r$

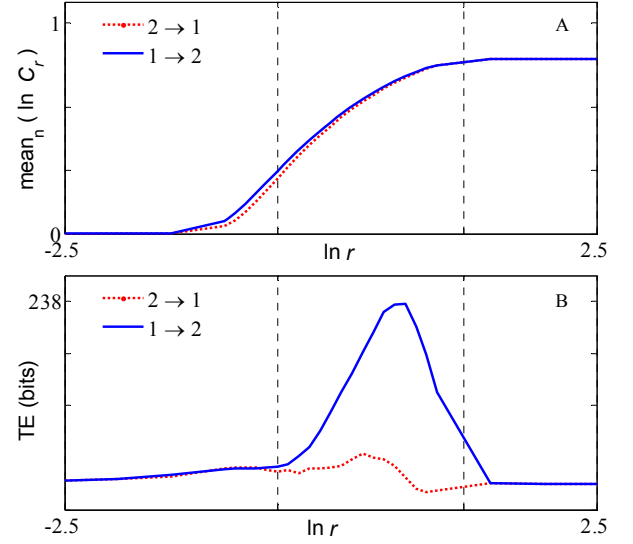


Fig. 1. Results of Transfer Entropy between signals x_1 and x_2 in linear system. A. Plot of the mean of $C_{n,r}$ with respect to n vs. r (in \ln scale), where C_n and r denote average joint probability and radius in the state space respectively. B. Plot of TE (bits) vs. radius r (in \ln scale), for direction of flow $1 \rightarrow 2$ (blue solid line) and $2 \rightarrow 1$ (red dotted line).

TABLE III
RESULTS ON TE IN LINEAR SYSTEM

$x_i \rightarrow x_j$	$i=1$	$i=2$	$i=3$
$j=1$	-	-1.8172 (1.2036)	15.5103 (2.2014)
$j=2$	235.1368 (9.0220)	-	4.0365 (1.0664)
$j=3$	91.4938 (4.5943)	40.4462 (2.3031)	-

TABLE IV
RESULTS ON DTE IN LINEAR SYSTEM

$x_1 \rightarrow x_2$	1.0000
$x_1 \rightarrow x_3$	0.7101
$x_2 \rightarrow x_3$	0.8185

are plotted in Fig. 1B. From this figure, we can find that TE can correctly point out the information flow direction in the linear region (delimited by the two vertical dash lines). For all pairs of signals, the parameters k and l were in the range $[2; 7]$, and $r \in [1; 2.2]$. In Table III, TE values correspond to the optimal values of r for the different pairs. From this table, we note a very high value of *TE* from signal 1 to signal 2 compared to the other ones. The strong relation is highlighted in Table IV using *DTE*, and this index is also successful in drawing up the complete propagation graph.

B. Physiology-based Model

The model described in Section II.C was used to simulate long duration signals (400 s) for a fixed connectivity pattern (“ground truth”) among neuronal populations, as illustrated in Fig. 2A and Fig. 2B. Sampling rate was equal to 256 Hz. Model parameters were such that a fast quasi-sinusoidal (25 Hz) activity (similar to that observed at seizure onset) was

generated by the three populations when they were unidirectionally coupled (Fig. 2C). The coupling parameters were such as: $K^{12} = K^{23} = K = 1500$.

- *Results on LGCI and DLGCI*

From Tables V and VI, when no causal relation exists, *i.e.* $P_2 \rightarrow P_1$, $P_3 \rightarrow P_1$ and $P_3 \rightarrow P_2$, the averaged *LGCI* are very similar (around 0.006). In comparison, $LGCI_{P_1 \rightarrow P_2}$ is much greater, but $LGCI_{P_1 \rightarrow P_3}$ and $LGCI_{P_2 \rightarrow P_3}$ are not so important in spite of the relation between populations 2 and 3. As for *DLGCI*, this index allows detecting the causal relation between populations 2 and 3, but, in this particular case, it fails in detecting the indirect relation from population 1 to 3.

- *Results on TE and DTE*

Simulations were carried out with the following parameters: $k = 16$, $l = 1$ and $r \in [0.2; 3.0]$. From Tables VII and VIII, it comes out that all information flows are correctly detected ($P_1 \rightarrow P_2$, $P_1 \rightarrow P_3$ and $P_2 \rightarrow P_3$). $DTE_{P_1 \rightarrow P_2}$ and $DTE_{P_2 \rightarrow P_3}$ are significant and the indicator succeeded in finding the indirect causal relation $P_1 \rightarrow P_3$ which was not the case with the *LGCI* based measure.

C. Disconnected Populations

For pairs of disconnected populations ($K^{ij} = K^{ji} = 0$, results not reported here), *DLGCI* and *DTE* are theoretically equal to zero, but an error in estimating *LGCI* and *TE* can induce large errors in *DLGCI* and *DTE* estimations. This is not a major issue. It only implies to first test the existence of a statistically significant link between *X* and *Y* (without searching directionality information) before measuring *DLGCI* and/or *DTE*. A standard method to perform this test is to use the *H2* regression index as in [9].

IV. CONCLUSION

In this paper, we focused on extracting information on the flow direction in multi-channel EEG recordings. For *iEEG* signals simulated by a physiologically-plausible model, the *TE* based approach performs better than the *LGCI* based one, particularly in the detection of indirect causal relations. Furthermore, the *DTE* index places emphasis on the direction of propagation. In a future work, we plan to test other types of epileptic signatures and to extend this study to the case of bidirectional flows.

ACKNOWLEDGMENT

This work was supported by China Scholarship Council (CSC) under Grant No. 2008609145.

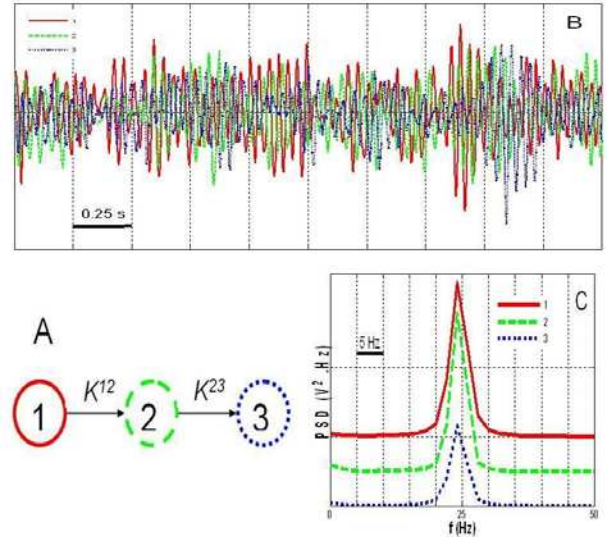


Fig. 2. Simulated signals. A. Considered scenario for connectivity among neuronal populations. Epileptic activity in population 2 (resp. 3) is caused by excitatory drive from population 1 (resp. 2). B. An example of output signals when populations are coupled. Time delays are not constant over time. C. Power spectral densities (PSD) of the signals are similar and match those observed in depth-EEG signals at the onset of seizures.

TABLE V
RESULTS ON LGCI IN PHYSIOLOGY-BASED MODEL

$P_i \rightarrow P_j$	$i = 1$	$i = 2$	$i = 3$
$j = 1$	-	0.0064 (0.0046)	0.0058 (0.0054)
$j = 2$	0.0209 (0.0099)	-	0.0062 (0.0047)
$j = 3$	0.0059 (0.0057)	0.0107 (0.0073)	-

TABLE VI
RESULTS ON DLGCI IN PHYSIOLOGY-BASED MODEL

$P_1 \rightarrow P_2$	0.5311
$P_1 \rightarrow P_3$	0.0085
$P_2 \rightarrow P_3$	0.2663

TABLE VII
RESULTS ON TE IN PHYSIOLOGY-BASED MODEL

$P_i \rightarrow P_j$	$i = 1$	$i = 2$	$i = 3$
$j = 1$	-	-0.1384 (0.3601)	0.1237 (0.1662)
$j = 2$	2.9467 (1.0288)	-	0.1405 (0.1672)
$j = 3$	0.3689 (0.1487)	0.3474 (0.1579)	-

TABLE VIII
RESULTS ON DTE IN PHYSIOLOGY-BASED MODEL

$P_1 \rightarrow P_2$	1.0000
$P_1 \rightarrow P_3$	0.4978
$P_2 \rightarrow P_3$	0.4241

REFERENCES

- [1] J. J. Engel, P. C. Van Ness, T. B. Rasmussen, and L. M. Ojemann, Outcome with respect to epileptic seizures. New York: Raven Press, 1993.
- [2] C. W. J. Granger, "Investigating causal relations by econometric models and cross-spectral methods," *Econometrica*, vol. 37, pp. 424-438, 1969.
- [3] T. Schreiber, "Measuring information transfer," *Physical review letters*, vol. 85, pp. 461-464, 2000.
- [4] S. Sabesan, K. Narayanan, A. Prasad, L. D. Iasemidis, A. Spanias, and K. Tsakalis, *Information Flow in Coupled Nonlinear Systems: Application to the Epileptic Human Brain*. New York: Springer, 2007.
- [5] S. Sabesan, L. Good, K. Tsakalis, A. Spanias, D. Treiman, and L. Iasemidis, "Information Flow and Application to Epileptogenic Focus Localization From Intracranial EEG," *IEEE transactions on neural systems and rehabilitation engineering: a publication of the IEEE Engineering in Medicine and Biology Society*, vol. 17, pp. 244-253, 2009.
- [6] C. M. Hurvich and C. L. Tsai, "A corrected Akaike information criterion for vector autoregressive model selection," *Journal of time series analysis*, vol. 14, pp. 271-279, 1993.
- [7] J. W. H. Schnupp, T. M. Hall, R. F. Kokelaar, and B. Ahmed, "Plasticity of temporal pattern codes for vocalization stimuli in primary auditory cortex," *Journal of Neuroscience*, vol. 26, pp. 4785-4795, 2006.
- [8] F. Wendling, A. Hernandez, J. J. Bellanger, P. Chauvel, and F. Bartolomei, "Interictal to ictal transition in human temporal lobe epilepsy: insights from a computational model of intracerebral EEG," *Journal of Clinical Neurophysiology*, vol. 22, pp. 343-356, 2005.
- [9] F. Wendling, F. Bartolomei, J. J. Bellanger, and P. Chauvel, "Interpretation of interdependencies in epileptic signals using a macroscopic physiological model of the EEG," *Clinical neurophysiology*, vol. 112, pp. 1201-1218, 2001.