



## **Restoration of regulatory and effector T cell balance and B cell homeostasis in systemic lupus erythematosus patients through vitamin D supplementation.**

Benjamin Terrier, Nicolas Derian, Yoland Schoindre, Wahiba Chaara, Guillaume Geri, Noël Zahr, Kubéraka Mariampillai, Michelle Rosenzwajg, Wassila Carpentier, Lucile Musset, et al.

### **► To cite this version:**

Benjamin Terrier, Nicolas Derian, Yoland Schoindre, Wahiba Chaara, Guillaume Geri, et al.. Restoration of regulatory and effector T cell balance and B cell homeostasis in systemic lupus erythematosus patients through vitamin D supplementation.. Arthritis Research and Therapy, 2012, 14 (5), pp.R221. 10.1186/ar4060 . inserm-00768700

**HAL Id: inserm-00768700**

**<https://inserm.hal.science/inserm-00768700>**

Submitted on 23 Dec 2012

**HAL** is a multi-disciplinary open access archive for the deposit and dissemination of scientific research documents, whether they are published or not. The documents may come from teaching and research institutions in France or abroad, or from public or private research centers.

L'archive ouverte pluridisciplinaire **HAL**, est destinée au dépôt et à la diffusion de documents scientifiques de niveau recherche, publiés ou non, émanant des établissements d'enseignement et de recherche français ou étrangers, des laboratoires publics ou privés.

RESEARCH ARTICLE

Open Access

# Restoration of regulatory and effector T cell balance and B cell homeostasis in systemic lupus erythematosus patients through vitamin D supplementation

Benjamin Terrier<sup>1,2,3</sup>, Nicolas Derian<sup>1,2</sup>, Yoland Schoindre<sup>4</sup>, Wahiba Chaara<sup>1,2,5</sup>, Guillaume Geri<sup>1,2,3</sup>, Noël Zahr<sup>6</sup>, Kubéraka Mariampillai<sup>7</sup>, Michelle Rosenzweig<sup>1,2,3,5</sup>, Wassila Carpentier<sup>8</sup>, Lucile Musset<sup>9</sup>, Jean-Charles Piette<sup>7</sup>, Adrien Six<sup>1,2,5</sup>, David Klatzmann<sup>1,2,3,5</sup>, David Saadoun<sup>1,2,3,7</sup>, Cacoub Patrice<sup>1,2,3,7</sup> and Nathalie Costedoat-Chalumeau<sup>1,2,3,7\*†</sup>

## Abstract

**Introduction:** Systemic lupus erythematosus (SLE) is a T and B cell-dependent autoimmune disease characterized by the appearance of autoantibodies, a global regulatory T cells (Tregs) depletion and an increase in Th17 cells. Recent studies have shown the multifaceted immunomodulatory effects of vitamin D, notably the expansion of Tregs and the decrease of Th1 and Th17 cells. A significant correlation between higher disease activity and lower serum 25-hydroxyvitamin D levels [25(OH)D] was also shown.

**Methods:** In this prospective study, we evaluated the safety and the immunological effects of vitamin D supplementation (100 000 IU of cholecalciferol per week for 4 weeks, followed by 100 000 IU of cholecalciferol per month for 6 months.) in 20 SLE patients with hypovitaminosis D.

**Results:** Serum 25(OH)D levels dramatically increased under vitamin D supplementation from  $18.7 \pm 6.7$  at day 0 to  $51.4 \pm 14.1$  ( $p < 0.001$ ) at 2 months and  $41.5 \pm 10.1$  ng/mL ( $p < 0.001$ ) at 6 months. Vitamin D was well tolerated and induced a preferential increase of naïve CD4<sup>+</sup> T cells, an increase of regulatory T cells and a decrease of effector Th1 and Th17 cells. Vitamin D also induced a decrease of memory B cells and anti-DNA antibodies. No modification of the prednisone dosage or initiation of new immunosuppressant agents was needed in all patients. We did not observe SLE flare during the 6 months follow-up period.

**Conclusions:** This preliminary study suggests the beneficial role of vitamin D in SLE patients and needs to be confirmed in randomized controlled trials.

## Introduction

Systemic lupus erythematosus (SLE) is a systemic autoimmune disease characterized by skin, joint, neurological and kidney involvement and serositis. Therapeutic management depends on the type and severity of organ involvement and includes nonsteroidal anti-inflammatory drugs, hydroxychloroquine, corticosteroids, and immunosuppressive agents [1]. Nevertheless, long-term suppressive

corticosteroids and/or immunosuppressive agents remain associated with morbidity and mortality [2]. SLE is a T and B cell-dependent disease characterized by the appearance of a variety of autoantibodies, some of which are pathogenic [1,3]. T cells are needed to initiate and sustain the secretion of antibodies by B cells, in particular to histones and double-stranded DNA [4]. SLE is also associated with global depletion of regulatory T cells (Tregs) [5], an increase in T helper lymphocytes producing IL-17 (Th17 cells) [6,7] and an increased expression of IFN-inducible genes [8].

\* Correspondence: nathalie.costedoat@gmail.com

† Contributed equally

<sup>1</sup>UPMC Université Paris 6, UMR 7211, F-75013 Paris, France

Full list of author information is available at the end of the article

Vitamin D from the skin and diet is metabolized in the liver to 25-hydroxyvitamin D (25(OH)D), which is used to determine a patient's vitamin D status; 25(OH)D is metabolized in the kidneys by the enzyme 25-hydroxyvitamin D-1 $\alpha$ -hydroxylase (CYP27B1) to its active form, 1,25-dihydroxyvitamin D. Recent studies have shown the multifaceted immunomodulatory effects *in vitro* of active vitamin D (calcitriol or 1,25-dihydroxyvitamin D), which is the ligand of the vitamin D receptor, notably the expansion of Tregs, which are able to suppress proliferation of effector T cells [9], and the decrease of Th1 and Th17 cells [9,10]. Active vitamin D inhibits B cell activation and differentiation into plasmablasts and immunoglobulin production [10-12]. Active vitamin D has also been shown to inhibit the activation and maturation of dendritic cells [13]. In addition, studies have shown a significant correlation between higher SLE activity and lower serum 25(OH)D levels [13,14]. These findings provide a rationale for considering vitamin D supplementation as an immunomodulatory agent for SLE.

We report here on the findings of a preliminary prospective monocenter open-label study designed to assess the safety and immunological effects of oral vitamin D supplementation in patients with SLE. We showed that vitamin D supplementation modulates Tregs and effector T cell balance by increasing Tregs and decreasing the Th17 and Th1 cells, and it decreases memory B cells and anti-dsDNA levels.

## Materials and methods

### Patients

This prospective study included consecutive SLE patients from the Department of Internal Medicine at Pitié-Salpêtrière Hospital (<http://www.clinicaltrials.gov> NCT01413230). Patients were eligible for the study when they met at least four of the 1997 American College of Rheumatology criteria for SLE [15]. Inclusion criteria for the study were as follows: 1) inactive disease or mild to moderate active disease indicated by a score  $\leq 8$  in the Safety of Estrogens in Lupus Erythematosus National Assessment-Systemic Lupus Erythematosus Disease Activity Index (SELENA-SLEDAI), and 2) stable dosage of prednisone and/or immunosuppressive agents for at least 1 and/or 3 months, respectively. Pregnant patients and those planning pregnancy, and patients who had previously received B cell-targeted therapy were excluded. Disease activity was assessed using SELENA-SLEDAI [16].

### Study design

Between 1 September and 31 November 2010, we assessed 24 SLE patients for eligibility (twenty-two women and two men, mean age  $\pm$  SD, 31  $\pm$  8 years). Their serum 25(OH)D level was measured. Hypovitaminosis D was defined as

serum 25(OH)D  $< 30$  ng/mL, while vitamin D sufficiency was defined as serum levels between 30 and 100 ng/mL [17]. Those with hypovitaminosis D ( $< 30$  ng/mL) were placed on the following schedule of oral vitamin D supplementation: 100,000 IU of cholecalciferol per week for 4 weeks, followed by 100,000 IU of cholecalciferol per month for 6 months. All supplemented patients were screened before vitamin D supplementation (Day 0, or D0), and 2 and 6 months (M2 and M6) after the beginning of vitamin D supplementation. All but four patients received hydroxychloroquine (200 or 400 mg daily) and/or oral prednisone ( $\leq 15$  mg/day, median dosage 5 mg/day). Three patients received a stable dosage of immunosuppressive agents. The study was approved by the institutional ethics committee, the Comité de protection des personnes Ile-de-France VI, in the Pitié-Salpêtrière Hospital (Paris, France) and informed consent was obtained from all patients.

At each visit, the SELENA-SLEDAI was recorded. Routine measurements were made of 25(OH)D levels, antinuclear antibodies by indirect immunofluorescence on HEp2 cells (Immunoconcepts, Sacramento CA, USA), anti-dsDNA antibodies levels by ELISA (DiaSorin, Saluggia, Italy), complement C3 and C4 levels, complete blood count, serum creatinine, proteinuria and hematuria. Serum 25(OH)D was measured in serum samples by means of a radioimmunoassay after simple extraction with acetonitrile, as described previously [18].

The primary endpoint of this study was safety. Safety endpoints included the occurrence of hypercalcemia, hyperphosphoremia or lithiasis. Secondary outcomes included changes from baseline in T cell and B cell homeostasis, and cytokines and gene expression profiles, in peripheral blood mononuclear cells (PBMCs), and clinical efficacy assessment using the SELENA-SLEDAI.

### Flow cytometry

PBMC subsets (CD3<sup>+</sup>, CD4<sup>+</sup>, CD8<sup>+</sup> T lymphocytes, CD19<sup>+</sup> B lymphocytes and CD3<sup>+</sup>CD56<sup>+</sup> NK cells) counts (cells/ $\mu$ L) were established from fresh blood samples using CYTOSTAT tetraCHROME kits with Flowcount fluorescents beads as an internal standard and tetra CXP software with a Navios cytometer according to the manufacturer's instructions (Beckman Coulter, Villepinte, France). Subsets of these cells were analyzed using multicolor flow cytometry and monoclonal antibodies (mAbs) directly conjugated to various fluorescent markers. PBMCs were also stained with the following conjugated mAbs at predetermined optimal dilutions for 30 minutes at 4°C: CD3-ECD, CD4-PCy7, CD4-ECD, CD8-PCy7, CD8-APC, CD10-APC, CD16-FITC, CD19-ECD, CD27-PE, CD28-FITC, CD45RO-FITC, CD45RA-APC, CD56-PE, HLA-DR-PCy7 (Beckman Coulter), CD25-PE, CD38-PCy7, CD56-FITC, CD62L-FITC, IgD-FITC (BD Pharmingen, Le-Pont-de-Claix, France),

CCR7-PE and LAP-PE (R&D systems, Lille, France), CD127-FITC (eBioscience, Paris, France) and GITR-PE and CD25-APC (Miltenyi Biotec, Paris, France). Intracellular detection of FoxP3 and CD152 (CTLA4) was performed on fixed and permeabilized cells using appropriate buffer (eBioscience for FoxP3, BD Pharmingen for CD152). Cell acquisition and analysis by flow cytometry were performed using a Navios Cytometer (Beckman Coulter). Instrument setting parameters (gains, compensations, and threshold) were set with machine software (CXP Software; Beckman Coulter) in conjunction with calibration beads (Flow-set beads, Cytocomp kit, and CYTO-TROL Control Cells). Machine reproducibility was verified with standardized beads (Flow-check). Data were analyzed with CXP analysis software and Kaluza software (Beckman Coulter).

For detection of intracellular cytokine production, PBMCs were stimulated with 50 ng/mL phorbol myristate acetate (PMA) and 1 mM ionomycin in the presence of Golgi-Plug (BD Pharmingen) for 4 hours and then stained with anti-IL-4-FITC, anti-IFN- $\gamma$ -FITC, anti-IL-10-PE (BD Pharmingen), or anti-IL-17A-Alexa Fluor 647 (eBioscience) after fixation and permeabilization, according to the manufacturer's instructions. Culture supernatants from PBMCs stimulated in the absence of Golgi-Plug were harvested and immediately frozen at -80°C.

### Statistical analyses

We compared measures taken at baseline (before the vitamin D supplementation) with those taken at M2 and M6 after the initiation of vitamin D supplementation, using the Wilcoxon signed-rank test. All tests were two-sided with a 0.05 significance level. Graphing and statistical analyses were performed using Prism software (GraphPad Software, Inc.).

## Results

### Study design and participants

Out of the 24 patients screened for serum 25(OH)D levels, 20 patients (83%) had hypovitaminosis D and were included in this prospective study. The baseline characteristics of the 20 patients are listed in Table 1. All patients completed the 6 months follow-up period.

### Safety and clinical and biological efficacy of vitamin D supplementation

Serum 25(OH)D levels dramatically increased under vitamin D supplementation from  $18.7 \pm 6.7$  at D0 to  $51.4 \pm 14.1$  ( $P < 0.001$ ) at M2 and to  $41.5 \pm 10.1$  ng/mL ( $P < 0.001$ ) at M6 (Figure 1A). Treatment was safe, with no significant increase of serum calcium and phosphorous and no occurrence of lithiasis. Although not statistically significant, disease activity assessed by the SELENA-SLEDAI slightly decreased from  $2.9 \pm 2.5$  at D0 to  $2.6 \pm 2.5$  at M2

**Table 1 Patient characteristics**

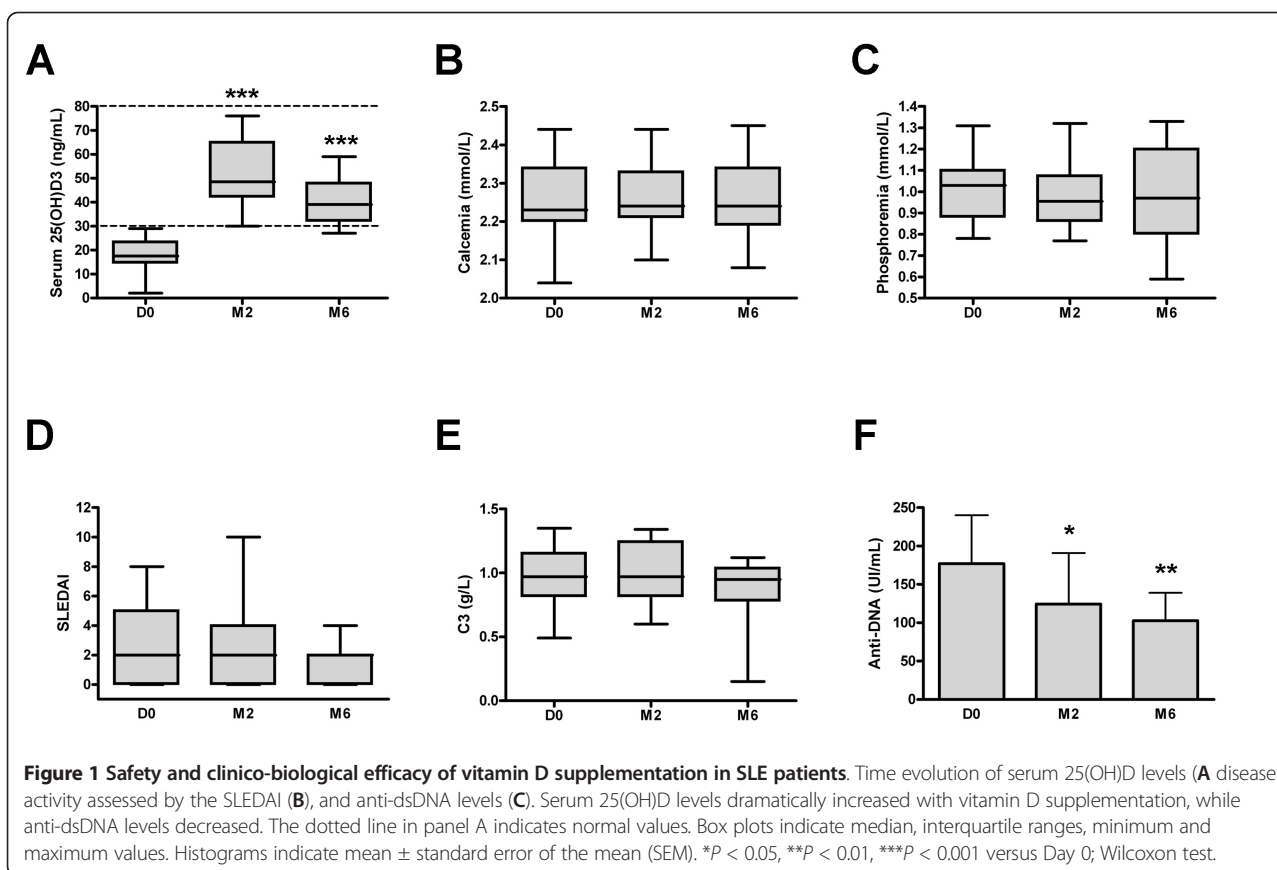
Characteristics	N = 20
<b>Epidemiology</b>	
Age, y, mean $\pm$ SD	31 $\pm$ 8
Female gender, n (%)	20 (100)
<b>Previous SLE manifestations</b>	
Skin, n (%)	11 (55)
Joints, n (%)	9 (45)
Serositis, n (%)	4 (20)
Kidney, n (%)	11 (55)
Central nervous system, n (%)	1 (5)
SELENA-SLEDAI at Day 0, mean (range)	2 (0 to 8)
<b>25-Hydroxyvitamin D levels</b>	
Mean $\pm$ SD, ng/mL	22 $\pm$ 11
25(OH)D $\leq$ 10 ng/mL, n (%)	1 (5)
11 < 25(OH)D $\leq$ 20 ng/mL, n (%)	11 (55)
21 < 25(OH)D $\leq$ 30 ng/mL, n (%)	8 (40)
<b>Associated treatments*</b>	
Prednisone, n (%)	14 (70)
Prednisone, median, mg/day (range)	5 (0 to 15)
Hydroxychloroquine, n (%)	17 (85)
Azathioprine, n (%)	2 (10)
Mycophenolate mofetil, n (%)	1 (5)

\*At the time of the study. SLE: systemic lupus erythematosus; SELENA-SLEDAI: Safety of Estrogens in Lupus Erythematosus National Assessment-Systemic Lupus Erythematosus Disease Activity Index; 25(OH)D: 25-hydroxyvitamin D.

( $P = 0.67$ ) and to  $1.9 \pm 1.8$  at M6 ( $P = 0.16$ ) (Figure 1B). C3 complement fraction levels remained stable during follow-up, while anti-dsDNA levels decreased from  $177 \pm 63$  at D0 to  $124 \pm 67$  at M2 ( $P < 0.05$ ) and to  $103 \pm 36$  IU/mL at M6 ( $P < 0.01$ ) (Figures 1C). No patients required modification of the prednisone dosage or initiation of new immunosuppressant agents. We did not observe SLE flare during the 6 months follow-up period.

### Peripheral blood lymphocytes with vitamin D supplementation

The impact of vitamin D supplementation on the proportion and the absolute number of CD3<sup>+</sup> T cells, CD4<sup>+</sup> and CD8<sup>+</sup> T cells, CD19<sup>+</sup> B cells and CD3<sup>+</sup>CD56<sup>+</sup> NK cells is shown in Figure 2. The mean proportions and absolute numbers at baseline were  $80 \pm 8\%$  and  $810 \pm 274/\text{mm}^3$  for CD3<sup>+</sup> T cells,  $42 \pm 7\%$  and  $412 \pm 157/\text{mm}^3$  for CD4<sup>+</sup> T cells,  $37 \pm 12\%$  and  $356 \pm 128/\text{mm}^3$  for CD8<sup>+</sup> T cells,  $12 \pm 6\%$  and  $138 \pm 89/\text{mm}^3$  for CD19<sup>+</sup> B cells and  $6 \pm 5\%$  and  $61 \pm 46/\text{mm}^3$  for CD3<sup>+</sup>CD56<sup>+</sup> NK cells. At M2 and M6, the proportion and absolute number of CD3<sup>+</sup> T cells, CD4<sup>+</sup> and CD8<sup>+</sup> T cells and CD3<sup>+</sup>CD56<sup>+</sup> NK cells remained stable, while CD19<sup>+</sup> B cell frequency and counts significantly decreased at M2 ( $P < 0.05$  for both) (Figure 2).



### Vitamin D supplementation induces a preferential increase of naïve CD4<sup>+</sup> T cells and a decrease of effector memory CD8<sup>+</sup> T cells and memory B cells

Naïve CD4<sup>+</sup> T cells increased in frequency without reaching the significance level ( $P = 0.09$  and  $P = 0.10$ , respectively) and in absolute number ( $P = 0.05$  and  $P < 0.01$ , respectively) at M2 and M6 with vitamin D supplementation, while other CD4<sup>+</sup> T cell subsets remained stable. Effector memory CD8<sup>+</sup> T cells decreased in frequency ( $P = 0.02$  and  $P = 0.01$ , respectively) but not in absolute number ( $P = 0.11$  and  $P = 0.55$ , respectively) at M2 and M6 with vitamin D supplementation (Figure 3A).

Using IgD and CD27 surface markers, we also observed a decrease in IgD<sup>+</sup>CD27<sup>+</sup> class-switched memory B cell frequency ( $P < 0.05$ ) and absolute number ( $P = 0.06$ ) at M2 and in IgD<sup>+</sup>CD27<sup>+</sup> memory B cell frequency ( $P = 0.11$  and  $P < 0.001$ , respectively) and absolute number ( $P < 0.05$  and  $P < 0.01$ , respectively) at M2 and M6, while IgD<sup>+</sup>CD27<sup>+</sup> marginal zone-like B cell frequency increased at M6 ( $P < 0.001$ ) (Figure 3B).

### Vitamin D supplementation induces a significant increase of regulatory T cells

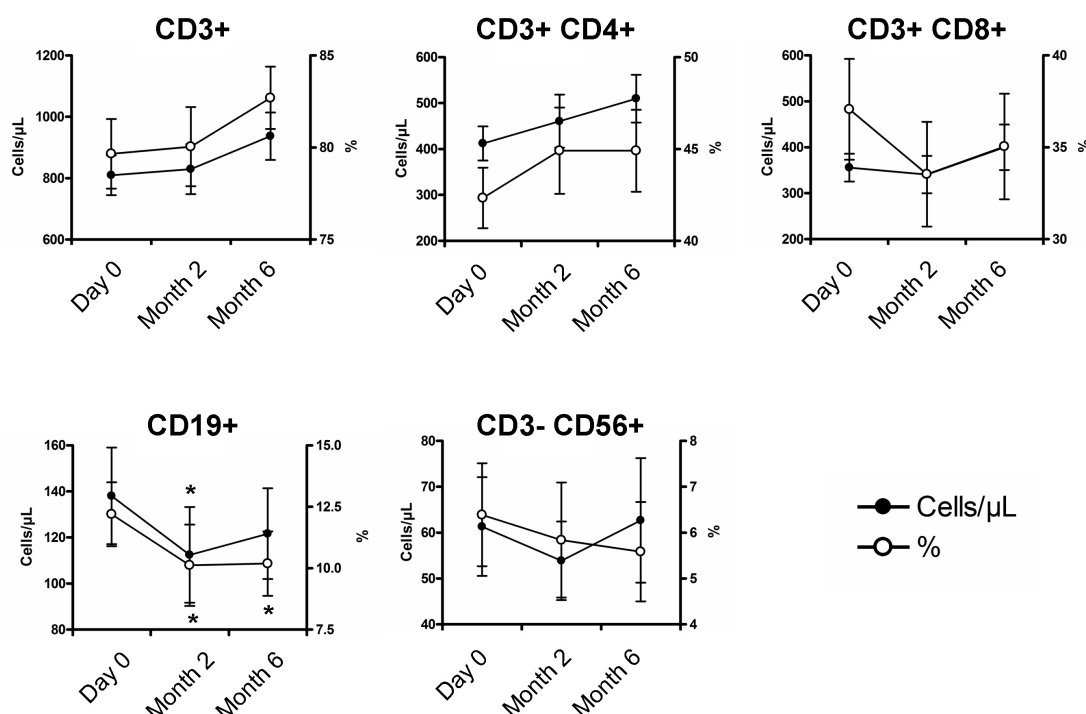
The impact of vitamin D supplementation on CD3<sup>+</sup>CD4<sup>+</sup>CD25<sup>hi</sup>CD127<sup>+</sup>FoxP3<sup>+</sup> Tregs and Treg subsets was

evaluated (Figure 4A). The percentage and absolute count of Tregs at baseline was  $3.5 \pm 1.2\%$  and  $15 \pm 8$  cells/ $\mu$ L. The percentage of Tregs was increased at  $4.6 \pm 1.3\%$  at M2 ( $P < 0.001$ ) and  $4.3 \pm 1.4\%$  at M6 ( $P < 0.01$ ), and the absolute count of Tregs was increased at  $23 \pm 14$  cells/ $\mu$ L ( $P < 0.05$ ) and  $25 \pm 14$  cells/ $\mu$ L ( $P < 0.01$ ), respectively (Figure 4B). Analysis of CD45RA and CD25 expression on CD4<sup>+</sup> T cells revealed that this increase concerned both resting and activated memory Tregs (Figure 4B). The increase in Tregs was associated with an increased expression of molecules associated with Treg suppression (that is, CTLA4, GITR and LAP) (Figure 4C).

### Vitamin D supplementation induces a significant decrease of effector Th1 and Th17 cells

Decreases were observed in Th1 cells from  $16.9 \pm 6.7\%$  at D0 to  $11.0 \pm 5.1\%$  at M2, and to  $13.6 \pm 6.5\%$  at M6 ( $P < 0.01$  and  $P < 0.05$ , respectively), in IFN-producing CD8<sup>+</sup> T cells from  $35.3 \pm 13.2\%$  at D0 to  $26.8 \pm 12.5\%$  at M2, and to  $29.7 \pm 13.4\%$  at M6 ( $P < 0.05$  and  $P = 0.06$ , respectively), and in Th17 from  $2.0 \pm 1.1\%$  at D0 to  $1.6 \pm 0.9\%$  at M2 and to  $2.0 \pm 1.3\%$  at M6 ( $P < 0.01$  and  $P = 0.81$ , respectively) after vitamin D supplementation. The Th2 cells remained stable during follow-up (Figure 5).





**Figure 2 Evolution of peripheral blood lymphocytes with vitamin D supplementation.** Time evolution of the proportion and the absolute number of CD3<sup>+</sup> T cells, CD4<sup>+</sup> and CD8<sup>+</sup> T cells, CD19<sup>+</sup> B cells and CD3<sup>-</sup>CD56<sup>+</sup> NK cells. At 2 and 6 months, the proportion and absolute number of CD3<sup>+</sup> T cells, CD4<sup>+</sup> and CD8<sup>+</sup> T cells and CD3<sup>-</sup>CD56<sup>+</sup> NK cells remained stable, while the CD19<sup>+</sup> B cell frequency and count significantly decreased at 2 months. Mean  $\pm$  standard error of the mean (SEM) is shown. \* $P < 0.05$  versus Day 0; Wilcoxon test.

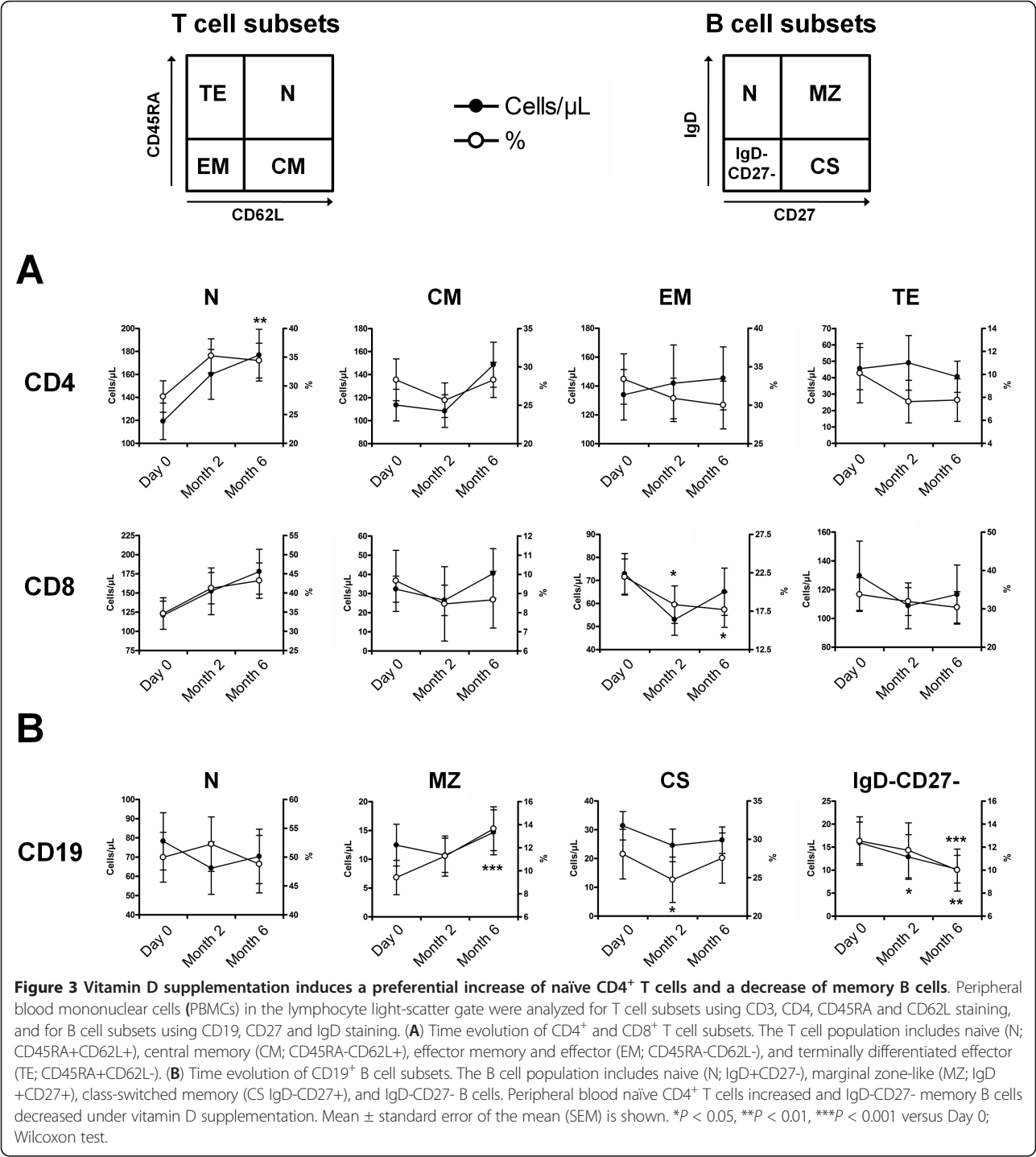
## Discussion

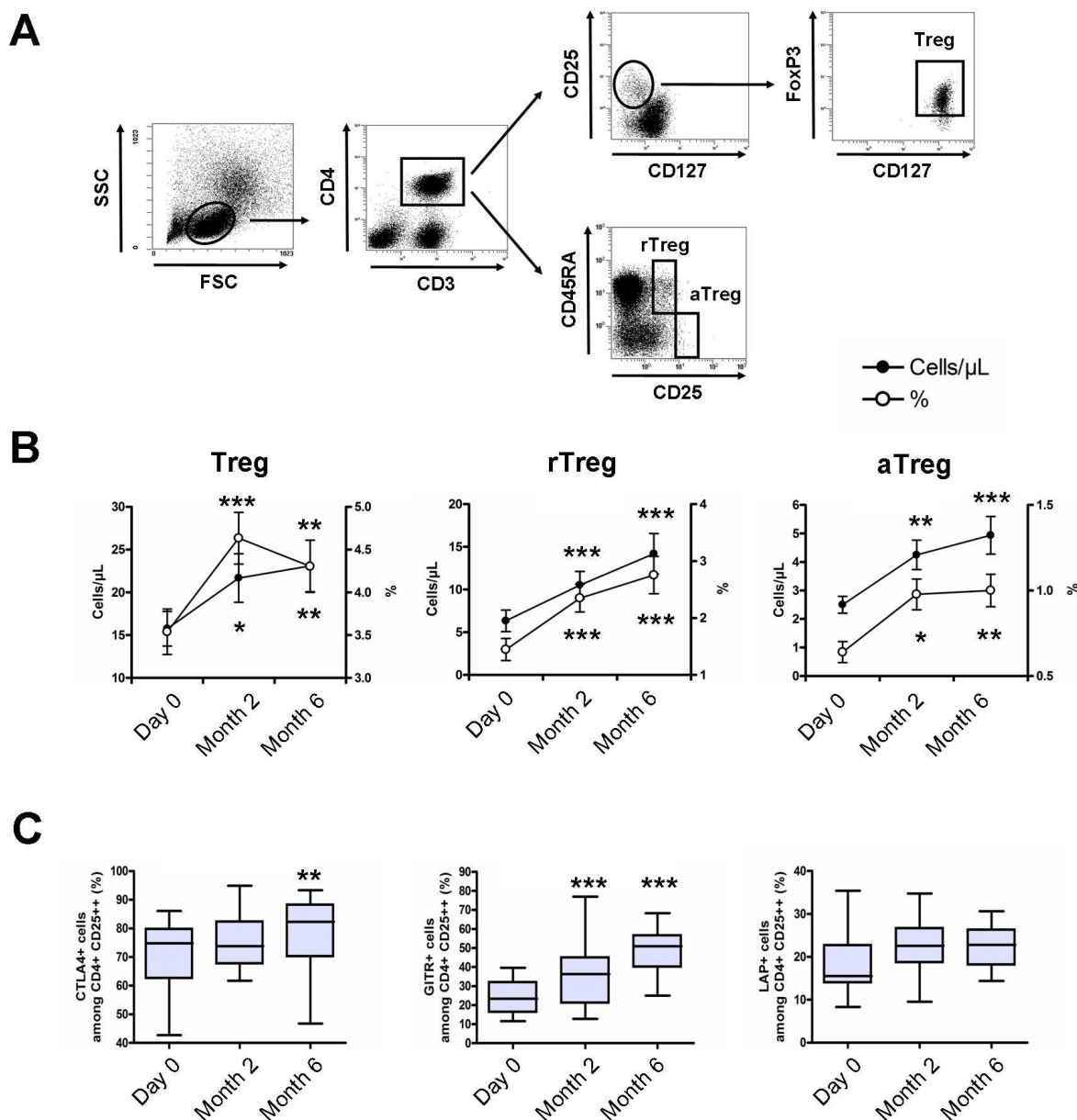
No study to date has assessed the *in vivo* benefit of vitamin D supplementation in SLE patients. For the first time, we assessed the safety and the immunological effects of vitamin D supplementation in patients with SLE. We demonstrated that vitamin D was safe and induced a decrease of memory B cells, an increase of Tregs and a decrease of effector Th1 and Th17 cells.

First, we confirmed the high frequency of hypovitaminosis D in SLE patients. Recent studies have highlighted vitamin D insufficiency in SLE patients, with approximately 65% of the patients showing serum 25(OH)D levels < 30 ng/mL [19-21]. In the present study, we aimed to reach the recommended serum 25(OH)D ranges for bone metabolism, that is, 30 to 80 ng/mL, within the first 2 months. The schedule of vitamin D administration that we choose included a first phase of intensive supplementation for one month, followed by a maintenance phase. Regarding the evolution of serum levels of 25(OH)D, calcium and phosphorous and the occurrence of clinical events, this regimen was effective

and safe. We included only SLE patients with low disease activity (SLEDAI  $\leq 8$ ) because we wanted to determine the specific effects of vitamin D in the absence of initiation or modification of associated therapy, such as an increase of the prednisone dosage or the use of immunosuppressive agents.

We demonstrated that vitamin D supplementation induced a beneficial effect *in vivo* on the perturbations of B cell and T cell homeostasis associated with SLE, by increasing Tregs and decreasing Th17 and Th1 cells, and memory B cells. Interestingly, the increase of Tregs concerned both resting Tregs and activated memory Tregs according to CD45RA and CD25 expression [22]. Our findings are supported by recently reported *in vitro* studies. 1,25(OH)<sub>2</sub> vitamin D3, the active form of vitamin D, was shown to exert a marked inhibitory effect on adaptive immune cells, by inhibiting the T cell proliferation [23,24], the expression of IL-2 [24,25] and IFN- $\gamma$  mRNA and protein in T cells [9,26,27], while promoting Th2-cell responses *in vitro* [28]. In our *in vivo* study, we did not observe a significant increase of Th2 cells under vitamin



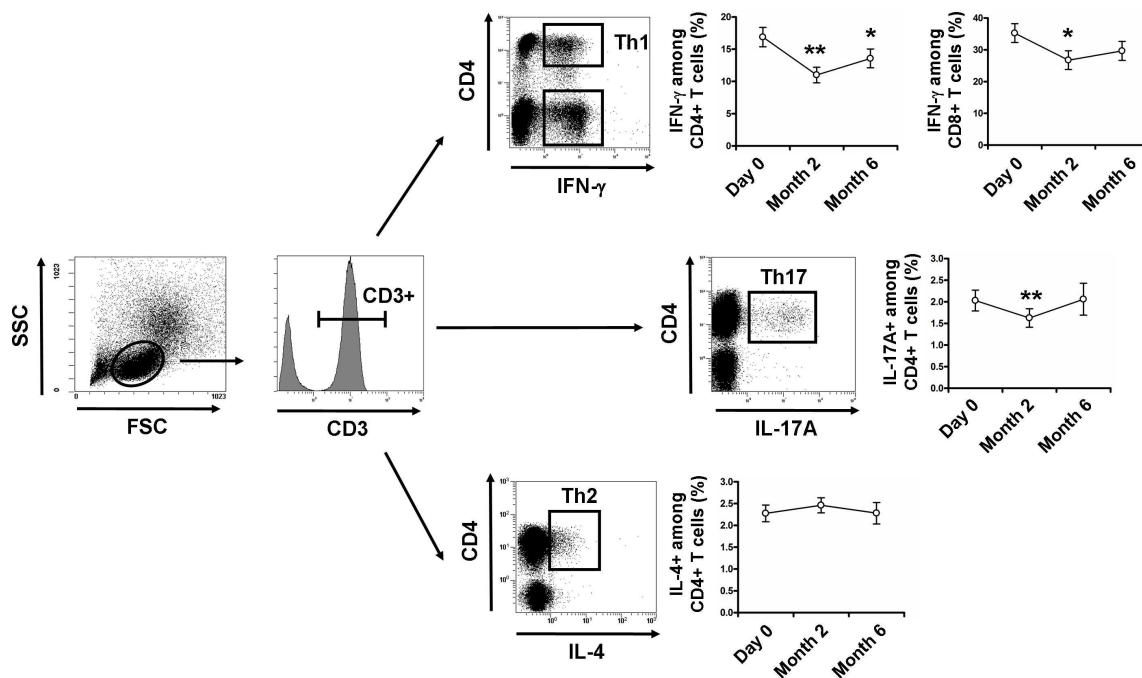


**Figure 4 Vitamin D supplementation induces a significant increase of regulatory T cells.** (A) Peripheral blood mononuclear cells (PBMCs) in the lymphocyte light-scatter gate were analyzed for CD3, CD4, CD25, CD127, CD45RA and FoxP3 staining. Regulatory T cells (Tregs), resting Tregs (rTregs) and activated memory Tregs (aTregs) were defined as CD3<sup>+</sup>CD4<sup>+</sup>CD25<sup>hi</sup>CD127<sup>+</sup>FoxP3<sup>+</sup> cells, CD3<sup>+</sup>CD4<sup>+</sup>CD25<sup>hi</sup>CD45RA<sup>+</sup> cells and CD3<sup>+</sup>CD4<sup>+</sup>CD25<sup>hi</sup>CD45RA<sup>+</sup> cells, respectively. (B) Time evolution of peripheral blood Tregs, rTregs and aTregs in percentage and absolute number. (C) Time evolution of CTLA4, GITR and LAP expression by Tregs. Peripheral blood Tregs, rTregs and aTregs increased under vitamin D supplementation, as did the expression of molecules associated with suppression of Tregs. Mean  $\pm$  standard error of the mean (SEM) is shown in panel B. Box plots in panel C indicate median, interquartile ranges, minimum and maximum values. \*P < 0.05, \*\*P < 0.01, \*\*\*P < 0.001 versus Day 0; Wilcoxon test.

Although too preliminary to be presented in the present study, we have performed a transcriptome analysis of PBMCs at D0 versus M2 after vitamin D supplementation on ten randomly selected patients, in

order to provide additional insights into the immunological effects of vitamin D in SLE (Additional file 1). Using independent component analysis (ICA) [33] and gene set enrichment analysis (GSEA) dataset [34,35],





**Figure 5 Vitamin D supplementation induces a significant decrease in Th1 and Th17 cells.** Peripheral blood mononuclear cells (PBMCs) were stimulated for 4 hours with Phorbol myristate acetate (PMA) and ionomycin. After gating on CD3<sup>+</sup> T cells, frequencies of IFN-γ-producing CD4<sup>+</sup> (Th1) and CD8<sup>+</sup> T cells, IL-17A-producing CD4<sup>+</sup> T cells (Th17) and IL-4-producing CD4<sup>+</sup> T cells (Th2) were analyzed with vitamin D supplementation. Th1, IFN-γ-producing CD8<sup>+</sup> T cells and Th17 cells decreased after 2 months of vitamin D supplementation. Mean ± standard error of the mean (SEM) is shown. \**P* < 0.05, \*\**P* < 0.01, \*\*\**P* < 0.001 versus Day 0; Wilcoxon test.

we identified 48 molecular signatures that were differentially expressed between D0 and M2, with 34 up- and 14 down-regulated signatures (see Figure S1 inAdditional file 1. This preliminary finding suggests an effect of vitamin D supplementation on the immune system. Among the identified signatures, we observed the down-regulation of RNA polymerase functions and histone expression and the up-regulation of the TP53/CDKN1A-related pathway that represent interesting pathways to explore in the future, owing to their possible involvement with a decrease in the accumulation of autoantigens and the activation and proliferation of autoreactive T and B lymphocytes. Also, the up-regulation of the TP53/CDKN1A-related pathway is interesting because CDKN1A is a potent cyclin-dependent kinase inhibitor that functions as a regulator of cell cycle progression [36].

## Conclusions

Vitamin D supplementation provides beneficial immunological effects in patients with SLE, with a decrease of

memory B cells and effector T cells and an increase of regulatory T cells. Our results must be interpreted with caution in the absence of well-designed randomized controlled trials, particularly for a relevant clinical endpoint. In addition, we focused on the immunological effects of vitamin D after two months and six months of supplementation, but earlier time points should bring additional information, particularly for gene expression analysis, calling for further studies.

## Significance and innovation

Vitamin D supplementation using 100,000 IU of cholecalciferol per week for 4 weeks, followed by 100,000 IU of cholecalciferol per month for 6 months, was well tolerated.

Vitamin D induced a preferential increase of naïve CD4<sup>+</sup> T cells, an increase of regulatory T cells, a decrease of effector Th1 and Th17 cells, and a decrease of memory B cells and anti-DNA antibodies.

This preliminary study suggests a beneficial role of vitamin D in SLE patients and needs to be confirmed in randomized controlled trials.

## Additional material

**Additional file 1: Microarray gene expression profile analysis.** This file contains additional material and a methods section that describes microarray gene expression profile analysis, and Figure S1 that illustrates clustering analysis of significant modulated signatures in patients at month 2 compared to baseline.

## Abbreviations

APC: allophycocyanin; CDKN1A: cyclin-dependent kinase inhibitor 1A; ECD: Phycoerythrin-Texas Red; ELISA: enzyme-linked immunosorbent assay; FITC: fluorescein isothiocyanate; FoxP3: forkhead box P3; GSEA: gene set enrichment analysis; ICA: independent component analysis; IFN: interferon; IL: interleukin; 25(OH)D: 25-hydroxyvitamin D; PBMC: peripheral blood mononuclear cell; PCy7: Phycoerythrin-Cyanin 7; PE: Phycoerythrin; PMA: phorbol myristate acetate; SLENA-SLEDAI: Safety of Estrogens in Lupus Erythematosus National Assessment-Systemic Lupus Erythematosus Disease Activity Index; SLE: systemic lupus erythematosus; Th17: T helper lymphocytes producing IL-17; Tregs: regulatory T cells.

## Acknowledgements

BT was supported by the *Fondation pour la Recherche Médicale* (FRM), the *Agence Nationale pour la Recherche sur le Sida et les Hépatites* (ANRS) and the *Société Nationale Française de Médecine Interne* (SNFMI).

## Author details

<sup>1</sup>UPMC Université Paris 6, UMR 7211, F-75013 Paris, France. <sup>2</sup>Centre National de la Recherche Scientifique (CNRS), UMR 7211, Paris, France. <sup>3</sup>INSERM, UMRS959; Groupe Hospitalier Pitié-Salpêtrière, 47 boulevard de l'Hôpital, 75013 Paris, France. <sup>4</sup>Department of Internal Medicine, Hôpital Foch, 40 rue Worth, 92150 Suresnes, France. <sup>5</sup>Department of Biotherapy, Groupe Hospitalier Pitié-Salpêtrière, 47 boulevard de l'Hôpital, 75013 Paris, France. <sup>6</sup>Department of Pharmacology, Groupe Hospitalier Pitié-Salpêtrière, 47 boulevard de l'Hôpital, 75013 Paris, France. <sup>7</sup>Department of Internal Medicine, Groupe Hospitalier Pitié-Salpêtrière, 47 boulevard de l'Hôpital, 75013 Paris, France. <sup>8</sup>P3S post-genomic platform, Groupe Hospitalier Pitié-Salpêtrière, 47 boulevard de l'Hôpital, 75013 Paris, France. <sup>9</sup>Department of Immunology, Groupe Hospitalier Pitié-Salpêtrière, 47 boulevard de l'Hôpital, 75013 Paris, France.

## Authors' contributions

BT, ND, YS, GG, PC and NCC devised and performed experiments; BT, PC and NCC provided patient referrals; BT, ND, YS, WC, GG, NZ, KM, MR, WC, LM, JCP, AS, DK, DS, PC and NCC interpreted results; and BT, PC and NCC designed the research and wrote the paper. All authors have read and approved the manuscript for publication.

## Competing interests

The authors declare that they have no competing interests.

Received: 10 March 2012 Revised: 10 July 2012

Accepted: 5 September 2012 Published: 17 October 2012

## References

- Rahman A, Isenberg DA: **Systemic lupus erythematosus.** *N Engl J Med* 2008, **358**:929-939.
- Cervera R, Khamashta MA, Font J, Sebastiani GD, Gil A, Lavilla P, Mejia JC, Aydinoglu AO, Chwalinska-Sadowska H, de Ramon E, Fernandez-Nebro A, Galeazzi M, Valen M, Mathieu A, Houssiau F, Caro N, Alba P, Ramos-Casals M, Ingelmo M, Hughes GR: **Morbidity and mortality in systemic lupus erythematosus during a 10-year period: a comparison of early and late manifestations in a cohort of 1,000 patients.** *Medicine (Baltimore)* 2003, **82**:299-308.
- Dorner T, Jacobi AM, Lee J, Lipsky PE: **Abnormalities of B cell subsets in patients with systemic lupus erythematosus.** *J Immunol Methods* 2011, **363**:187-197.
- Eilat D, Naparstek Y: **Anti-DNA autoantibodies: a puzzle of autoimmune phenomena.** *Immunol Today* 1999, **20**:339-342.
- Miyara M, Amoura Z, Parizot C, Badoual C, Dorgham K, Trad S, Nochy D, Debre P, Piette JC, Gorochov G: **Global natural regulatory T cell depletion in active systemic lupus erythematosus.** *J Immunol* 2005, **175**:8392-8400.
- Crispin JC, Tsokos GC: **Interleukin-17-producing T cells in lupus.** *Curr Opin Rheumatol* 2010, **22**:499-503.
- Apostolidis SA, Crispin JC, Tsokos GC: **IL-17-producing T cells in lupus nephritis.** *Lupus* 2011, **20**:120-124.
- Bennett L, Palucka AK, Arce E, Cantrell V, Borvak J, Banchereau J, Pascual V: **Interferon and granulopoiesis signatures in systemic lupus erythematosus blood.** *J Exp Med* 2003, **197**:711-723.
- Jeffery LE, Burke F, Mura M, Zheng Y, Qureshi OS, Hewison M, Walker LS, Lammas DA, Raza K, Sansom DM: **1,25-Dihydroxyvitamin D3 and IL-2 combine to inhibit T cell production of inflammatory cytokines and promote development of regulatory T cells expressing CTLA-4 and FoxP3.** *J Immunol* 2009, **183**:5458-5467.
- Mora JR, Iwata M, von Andrian UH: **Vitamin effects on the immune system: vitamins A and D take centre stage.** *Nat Rev Immunol* 2008, **8**:685-698.
- Linker-Israeli M, Elstner E, Klinenberg JR, Wallace DJ, Koeffler HP: **Vitamin D (3) and its synthetic analogs inhibit the spontaneous in vitro immunoglobulin production by SLE-derived PBMC.** *Clin Immunol* 2001, **99**:82-93.
- Chen S, Sims GP, Chen XX, Gu YY, Lipsky PE: **Modulatory effects of 1,25-dihydroxyvitamin D3 on human B cell differentiation.** *J Immunol* 2007, **179**:1634-1647.
- Ben-Zvi I, Aranow C, Mackay M, Stanevsky A, Kamen DL, Marinescu LM, Collins CE, Gilkeson GS, Diamond B, Hardin JA: **The impact of vitamin D on dendritic cell function in patients with systemic lupus erythematosus.** *PLoS One* 2010, **5**:e9193.
- Amital H, Szekanecz Z, Szucs G, Danko K, Nagy E, Csepány T, Kiss E, Rovinsky J, Tuchynova A, Kozakova D, Doria A, Corocher N, Agmon-Levin N, Barak V, Orbach H, Zandman-Goddard G, Shoenfeld Y: **Serum concentrations of 25-OH vitamin D in patients with systemic lupus erythematosus (SLE) are inversely related to disease activity: is it time to routinely supplement patients with SLE with vitamin D?** *Ann Rheum Dis* 2010, **69**:1155-1157.
- Hochberg MC: **Updating the American College of Rheumatology revised criteria for the classification of systemic lupus erythematosus.** *Arthritis Rheum* 1997, **40**:1725.
- Petri M, Kim MY, Kalunian KC, Grossman J, Hahn BH, Sammaritano LR, Lockshin M, Merrill JT, Belmont HM, Askanase AD, McCune WJ, Heath-Holmes M, Dooley MA, Von Feldt J, Friedman A, Tan M, Davis J, Cronin M, Diamond B, Mackay M, Sigler L, Fillius M, Rupel A, Licciardi F, Buyon JP: **Combined oral contraceptives in women with systemic lupus erythematosus.** *N Engl J Med* 2005, **353**:2550-2558.
- Souberbielle JC, Body JJ, Lappe JM, Plebani M, Shoenfeld Y, Wang TJ, Bischoff-Ferrari HA, Cavalier E, Ebeling PR, Fardellone P, Gandini S, Gruson D, Guerin AP, Heickendorff L, Hollis BW, Ish-Shalom S, Jean G, von Landenberg P, Largura A, Olsson T, Pierrot-Deseilligny C, Pilz S, Tincani A, Vcalour A, Zittermann A: **Vitamin D and musculoskeletal health, cardiovascular disease, autoimmunity and cancer: Recommendations for clinical practice.** *Autoimmun Rev* 2010, **9**:709-715.
- Hollis BW, Kamerud JQ, Selvaag SR, Lorenz JD, Napoli JL: **Determination of vitamin D status by radioimmunoassay with an 125I-labeled tracer.** *Clin Chem* 1993, **39**:529-533.
- Ritterhouse LL, Crowe SR, Niewold TB, Kamen DL, Macwana SR, Roberts VC, Dedek AB, Harley JB, Scofield RH, Guthridge JM, James JA: **Vitamin D deficiency is associated with an increased autoimmune response in healthy individuals and in patients with systemic lupus erythematosus.** *Ann Rheum Dis* 2011, **70**:1569-1574.
- Wu PW, Rhew EY, Dyer AR, Dunlop DD, Langman CB, Price H, Sutton-Tyrrell K, McPherson DD, Edmundowicz D, Kondos GT, Ramsey-Goldman R: **25-hydroxyvitamin D and cardiovascular risk factors in women with systemic lupus erythematosus.** *Arthritis Rheum* 2009, **61**:1387-1395.
- Kamen DL, Cooper GS, Bouali H, Shaftman SR, Hollis BW, Gilkeson GS: **Vitamin D deficiency in systemic lupus erythematosus.** *Autoimmun Rev* 2006, **5**:114-117.
- Miyara M, Yoshioka Y, Kitoh A, Shima T, Wing K, Niwa A, Parizot C, Tafin C, Heike T, Valeyre D, Mathian A, Nakahata T, Yamaguchi T, Nomura T, Ono M, Amoura Z, Gorochov G, Sakaguchi S: **Functional delineation and differentiation dynamics of human CD4+ T cells expressing the FoxP3 transcription factor.** *Immunity* 2009, **30**:899-911.

23. Lemire JM, Adams JS, Sakai R, Jordan SC: **1 alpha,25-dihydroxyvitamin D3 suppresses proliferation and immunoglobulin production by normal human peripheral blood mononuclear cells.** *J Clin Invest* 1984, **74**:657-661.
24. Rigby WF, Stacy T, Fanger MW: **Inhibition of T lymphocyte mitogenesis by 1,25-dihydroxyvitamin D3 (calcitriol).** *J Clin Invest* 1984, **74**:1451-1455.
25. Lemire JM, Adams JS, Kermani-Arab V, Bakke AC, Sakai R, Jordan SC: **1,25-Dihydroxyvitamin D3 suppresses human T helper/inducer lymphocyte activity in vitro.** *J Immunol* 1985, **134**:3032-3035.
26. Reichel H, Koeffler HP, Tobler A, Norman AW: **1 alpha,25-Dihydroxyvitamin D3 inhibits gamma-interferon synthesis by normal human peripheral blood lymphocytes.** *Proc Natl Acad Sci USA* 1987, **84**:3385-3389.
27. Rigby WF, Yirinec B, Oldershaw RL, Fanger MW: **Comparison of the effects of 1,25-dihydroxyvitamin D3 on T lymphocyte subpopulations.** *Eur J Immunol* 1987, **17**:563-566.
28. van Etten E, Mathieu C: **Immunoregulation by 1,25-dihydroxyvitamin D3: basic concepts.** *J Steroid Biochem Mol Biol* 2005, **97**:93-101.
29. Daniel C, Sartory NA, Zahn N, Radeke HH, Stein JM: **Immune modulatory treatment of trinitrobenzene sulfonic acid colitis with calcitriol is associated with a change of a T helper (Th) 1/Th17 to a Th2 and regulatory T cell profile.** *J Pharmacol Exp Ther* 2008, **324**:23-33.
30. Gorman S, Kuritzky LA, Judge MA, Dixon KM, McGlade JP, Mason RS, Finlay-Jones JJ, Hart PH: **Topically applied 1,25-dihydroxyvitamin D3 enhances the suppressive activity of CD4+CD25+ cells in the draining lymph nodes.** *J Immunol* 2007, **179**:6273-6283.
31. Penna G, Roncari A, Amuchastegui S, Daniel KC, Berti E, Colonna M, Adorini L: **Expression of the inhibitory receptor ILT3 on dendritic cells is dispensable for induction of CD4+Foxp3+ regulatory T cells by 1,25-dihydroxyvitamin D3.** *Blood* 2005, **106**:3490-3497.
32. Baeke F, Korf H, Overbergh L, Verstuyf A, Thorrez L, Van Lommel L, Waer M, Schuit F, Gysemans C, Mathieu C: **The vitamin D analog, TX527, promotes a human CD4+CD25highCD127low regulatory T cell profile and induces a migratory signature specific for homing to sites of inflammation.** *J Immunol* 2011, **186**:132-142.
33. Chiappetta P, Roubaud MC, Torresani B: **Blind source separation and the analysis of microarray data.** *J Comput Biol* 2004, **11**:1090-1109.
34. Subramanian A, Tamayo P, Mootha VK, Mukherjee S, Ebert BL, Gillette MA, Paulovich A, Pomeroy SL, Golub TR, Lander ES, Mesirov JP: **Gene set enrichment analysis: a knowledge-based approach for interpreting genome-wide expression profiles.** *Proc Natl Acad Sci USA* 2005, **102**:15545-15550.
35. Mootha VK, Lindgren CM, Eriksson KF, Subramanian A, Sihag S, Lehar J, Puigserver P, Carlsson E, Ridderstrale M, Laurila E, Houstis N, Daly MJ, Patterson N, Mesirov JP, Golub TR, Tamayo P, Spiegelman B, Lander ES, Hirschhorn JN, Altshuler D, Groop LC: **PGC-1alpha-responsive genes involved in oxidative phosphorylation are coordinately downregulated in human diabetes.** *Nat Genet* 2003, **34**:267-273.
36. Goulvestre C, Chereau C, Nicco C, Mouthon L, Weill B, Batteux F: **A mimic of p21WAF1/CIP1 ameliorates murine lupus.** *J Immunol* 2005, **175**:6959-6967.

doi:10.1186/ar4060

**Cite this article as:** Terrier et al.: Restoration of regulatory and effector T cell balance and B cell homeostasis in systemic lupus erythematosus patients through vitamin D supplementation. *Arthritis Research & Therapy* 2012 **14**:R221.

**Submit your next manuscript to BioMed Central and take full advantage of:**

- Convenient online submission
- Thorough peer review
- No space constraints or color figure charges
- Immediate publication on acceptance
- Inclusion in PubMed, CAS, Scopus and Google Scholar
- Research which is freely available for redistribution

Submit your manuscript at  
www.biomedcentral.com/submit

