



HAL
open science

Adaptive weighted fusion of multiple MR sequences for brain lesion segmentation

Florence Forbes, Senan Doyle, Daniel Garcia-Lorenzo, Christian Barillot,
Michel Dojat

► **To cite this version:**

Florence Forbes, Senan Doyle, Daniel Garcia-Lorenzo, Christian Barillot, Michel Dojat. Adaptive weighted fusion of multiple MR sequences for brain lesion segmentation. 2010 IEEE International Symposium on Biomedical Imaging: From Nano to Macro, Apr 2010, Rotterdam, Netherlands. pp.69-72, 10.1109/ISBI.2010.5490413 . inserm-00723807

HAL Id: inserm-00723807

<https://inserm.hal.science/inserm-00723807v1>

Submitted on 14 Aug 2012

HAL is a multi-disciplinary open access archive for the deposit and dissemination of scientific research documents, whether they are published or not. The documents may come from teaching and research institutions in France or abroad, or from public or private research centers.

L'archive ouverte pluridisciplinaire **HAL**, est destinée au dépôt et à la diffusion de documents scientifiques de niveau recherche, publiés ou non, émanant des établissements d'enseignement et de recherche français ou étrangers, des laboratoires publics ou privés.

ADAPTIVE WEIGHTED FUSION OF MULTIPLE MR SEQUENCES FOR BRAIN LESION SEGMENTATION

F. Forbes, S. Doyle

D. Garcia-Lorenzo, C. Barillot

M. Dojat

INRIA Grenoble Rhône-Alpes, LJK
Mistis team
Montbonnot, France

INRIA Rennes Bretagne Atlantique
Visages team
Rennes, France

INSERM
GIN
Grenoble, France

ABSTRACT

We propose a technique for fusing the output of multiple Magnetic Resonance (MR) sequences to robustly and accurately segment brain lesions. It is based on a Bayesian multi-sequence Markov model that includes weight parameters to account for the relative importance and control the impact of each sequence. The Bayesian framework has the advantage of allowing 1) the incorporation of expert knowledge on the *a priori* relevant information content of each sequence and 2) a weighting scheme which is modified adaptively according to the data and the segmentation task under consideration. The model, applied to the detection of multiple sclerosis and stroke lesions shows promising results.

Index Terms— MRI, segmentation, brain lesion, Bayesian model, MRF, variational EM

1. INTRODUCTION

The delineation and quantification of brain lesions is critical to establishing patient prognosis, and for charting the development of pathology over time. Typically, this is performed manually by a medical expert, however automatic methods have been proposed (see [13] for review) to alleviate the tedious, time consuming and subjective nature of manual delineation. Automated or semi-automated brain lesion detection methods can be classified according to their use of multiple sequences, *a priori* knowledge about the structure of normal brain, tissue segmentation models, and whether or not specific lesion types are targeted. A common feature is that most methods are based on the initial identification of *candidate regions* for lesions. In most approaches, normal brain tissue *a priori* maps are used to help identify regions where the damaged brain differs, and the lesion is identified as an outlier.

Existing methods frequently avail of complementary information from multiple sequences. For example, lesion voxels may appear atypical in one modality and normal in another. This is well known and implicitly used by neuroradiologists when examining data. Within a mathematical framework, multiple sequences enable the superior estimation of tissue classes in a higher dimensional space. However, given that the information content and discriminative power to detect lesions varies between different MR sequences, the question remains as to how to best combine the multiple channels. Depending on the task at hand, it might be beneficial to weight the various sequences differently.

In this paper, rather than trying to detect lesion voxels as outliers from a normal tissue model, we adopt an incorporation strategy. We propose to modify the tissue segmentation model so that

lesion voxels become inliers for the modified model and can be identified as a genuine model component. Compared to *robust estimation* approaches (eg. [14]) that consist of down-weighting the effect of outliers on the main model estimation, we aim to increase the weight of candidate lesion voxels to overcome the problem of under-representation of the lesion class.

We introduce weight parameters in the segmentation model and then solve the issue of prescribing values for these weights by developing a Bayesian framework. This has the advantage to avoid the specification of *ad-hoc* weight values and to allow the incorporation of expert knowledge through a weight prior distribution. We provide an estimation procedure based on a variational Expectation Maximization (EM) algorithm to produce the corresponding segmentation. Furthermore, in the absence of explicit expert knowledge, we show how the weight prior can be specified to guide the model toward lesion identification. Experiments on artificial and real lesions of various sizes are reported to demonstrate the good performance of our approach.

2. A WEIGHTED MULTI-SEQUENCE MARKOV MODEL

We consider a set V of N voxels and denote by $\mathbf{y} = \{\mathbf{y}_1, \dots, \mathbf{y}_N\}$ the intensity values observed at each voxel. Each $\mathbf{y}_i = \{y_{i1}, \dots, y_{iM}\}$ is itself a vector of M intensity values corresponding to M different MR sequences. For brain tissue segmentation, we denote by $\mathbf{z} = \{\mathbf{z}_1, \dots, \mathbf{z}_N\}$ the hidden classes (generally 3 tissues plus some possible additional classes to account for lesions) and by \mathcal{Z} the set in which \mathbf{z} takes its values. Typically, the \mathbf{z}_i 's take their values in $\{1 \dots K\}$. We consider nonnegative weights $\omega = \{\omega_i, i \in V\}$ in a state space denoted by \mathcal{W} and with $\omega_i = \{\omega_{i1}, \dots, \omega_{iM}\}$. In our general setting the weights are sequence and voxel-specific. The rationale is that relevant information is not usually uniformly localized so that the weights cannot be fixed equally for all the voxels in a given sequence but may depend on the location in the brain. Spatial dependencies between voxels are then introduced through Markov Random Field (MRF) modelling. Denoting $\psi = \{\beta, \phi\}$ additional parameters, we assume that the joint distribution $p(\mathbf{y}, \mathbf{z}, \omega; \psi)$ is a MRF with the following energy function:

$$H(\mathbf{y}, \mathbf{z}, \omega; \psi) = H_{\mathbf{Z}}(\mathbf{z}; \beta) + H_{\mathbf{W}}(\omega) + \sum_{i \in V} \log g(\mathbf{y}_i | \mathbf{z}_i, \omega_i; \phi) \quad (1)$$

where the energy term $H_{\mathbf{W}}(\omega)$ involving only ω does not depend on ψ and the $g(\mathbf{y}_i | \mathbf{z}_i, \omega_i; \phi)$ s are probability density functions of \mathbf{y}_i . The three terms in this energy are further specified below.

Data term. The data term $\sum_{i \in V} \log g(\mathbf{y}_i | \mathbf{z}_i, \omega_i; \phi)$ in (1) corresponds to the modelling of tissue dependent intensity distributions. We consider M -dimensional Gaussian distributions with diagonal covari-

ance matrices. For each class k , ${}^t(\mu_{k1}, \dots, \mu_{kM})$ is the mean vector and $\{s_{k1}, \dots, s_{kM}\}$ the covariance matrix components. When $\mathbf{z}_i = k$, then $\mathcal{G}(y_{im}; \mu_{\mathbf{z}_i m}, s_{\mathbf{z}_i m})$ represents the Gaussian distribution with mean μ_{km} and variance s_{km} . The whole set of Gaussian parameters is denoted by $\phi = \{\mu_{km}, s_{km}, k = 1 \dots K, m = 1 \dots M\}$. Our data term is then defined by setting

$$g(\mathbf{y}_i | \mathbf{z}_i, \omega_i; \phi) = \prod_{m=1}^M \mathcal{G}(y_{im}; \mu_{\mathbf{z}_i m}, \frac{s_{\mathbf{z}_i m}}{\omega_{im}}),$$

which is proportional to $\prod_{m=1}^M \mathcal{G}(y_{im}; \mu_{\mathbf{z}_i m}, s_{\mathbf{z}_i m})^{\omega_{im}}$. Intuitively, the impact of a larger ω_{im} is to give more importance to the intensity value y_{im} in the model. Typically an integer ω_{im} greater than one would correspond to increase ω_{im} times the number of voxels with intensity value y_{im} . When the weights are all one, a standard multivariate Gaussian case is recovered.

Missing data term. The missing data term $H_{\mathbf{Z}}(\mathbf{z}; \beta)$ in (1) is set to a standard Potts model, with external field ξ and spatial interaction parameter η , whose energy is

$$H_{\mathbf{Z}}(\mathbf{z}; \beta) = \sum_{i \in V} (\xi_{\mathbf{z}_i} + \sum_{j \in \mathcal{N}(i)} \eta \langle \mathbf{z}_i, \mathbf{z}_j \rangle),$$

where $\mathcal{N}(i)$ denotes the voxels neighboring i and $\langle \mathbf{z}_i, \mathbf{z}_j \rangle$ is 1 when $\mathbf{z}_i = \mathbf{z}_j$ and 0 otherwise. $\beta = \{\xi, \eta\}$ with $\xi = \{{}^t(\xi_{i1} \dots \xi_{iK}), i \in V\}$ being a set of real-valued K -dimensional vectors and η a real positive value.

Parameter prior term. The weights are assumed independent from the other parameters ψ and independent across modalities. The simplest choice is to define a prior $p(\omega) = \prod_{m=1}^M \prod_{i \in V} p(\omega_{im})$ where each $p(\omega_{im})$ is a Gamma distribution with hyperparameters α_{im} (shape) and γ_{im} (inverse scale). This corresponds to

$$H_W(\omega) = \sum_{m=1}^M \sum_{i \in V} ((\alpha_{im} - 1) \log \omega_{im} - \gamma_{im} \omega_{im}).$$

In practice, the set of hyperparameters is fixed so that the modes of each prior $p(\omega_{im})$ are located at some *expert weights* $\{\omega_{im}^{exp}, m = 1 \dots M, i \in V\}$ accounting for some external knowledge, if available. Formally, we set $\alpha_{im} = \gamma_{im} \omega_{im}^{exp} + 1$. The expert weights can be chosen according to the specific task. For example, when voxels with typical lesion intensities are not numerous enough to attract a model component, increasing the expert weight for some of them will help in biasing the model toward the identification of a lesion class.

3. ESTIMATION BY VARIATIONAL BAYESIAN EM

The joint distribution of the observations \mathbf{y} and the missing variables \mathbf{z} is governed by the weights $\omega \in \mathcal{W}$ and parameters $\psi \in \Psi$, which are both unknown and need to be estimated within the segmentation procedure. Our procedure must then provide point estimates for the ψ while accounting for prior knowledge on ω . A natural solution is to adopt an Expectation-Maximization (EM) framework in which the weights ω are considered as additional missing variables, but this results in an intractable E-step for our model. We therefore propose to use an EM variant similar to the Variational Bayesian EM presented in [1]. Our framework varies slightly from the case of conjugate exponential models described in [1] and more importantly, our presentation offers the possibility to deal with extra parameters (the Gaussian means and variances in our setting) for which no prior information is available. As a consequence, the variational Bayesian M-step of [1] is transferred into our E-step while our M-step has no equivalent in the formulation of [1]. It follows that our E-step becomes an approximate E-step which can be further decomposed into two stages, respectively E-Z and E-W in which the goal is to update probability distributions q_Z and q_W in turn on \mathcal{Z} and \mathcal{W} respectively. At iteration r , with $q_W^{(r-1)}$ and $\psi^{(r)}$ representing current

estimations, the E-step decomposes into:

$$\mathbf{E}\text{-Z: } q_Z^{(r)} \propto \exp\left(E_{q_W^{(r-1)}}[\log p(\mathbf{z} | \mathbf{y}, \mathbf{W}; \psi^{(r)})]\right) \quad (2)$$

$$\mathbf{E}\text{-W: } q_W^{(r)} \propto \exp\left(E_{q_Z^{(r)}}[\log p(\omega | \mathbf{y}, \mathbf{Z}; \psi^{(r)})]\right). \quad (3)$$

The corresponding **M-step** is

$$\mathbf{M: } \psi^{(r+1)} = \arg \max_{\psi \in \Psi} E_{q_Z^{(r)} q_W^{(r)}}[\log p(\mathbf{y}, \mathbf{Z}, W; \psi)]. \quad (4)$$

Then step (2) leads to $q_Z^{(r)}(\mathbf{z}) = p(\mathbf{z} | \mathbf{y}, E_{q_W^{(r-1)}}[W]; \psi^{(r)})$ which remains intractable but for which a number of approximation techniques are available. In particular, we use a mean-field like algorithm as described in [3]. Among the three different schemes available in [3], all correspond to a product approximation but only one (the so-called mean field scheme) can be seen as a standard variational approximation.

In step (3), the choice of independent Gamma priors for $H_W(\omega)$, has the advantage of producing a product of independent *conjugate* Gamma distributions for $q_W^{(r)}(\omega)$. The expectation $E_{q_W^{(r)}}[W_{im}]$ denoted by $\bar{\omega}_{im}^{(r)}$ becomes:

$$\bar{\omega}_{im}^{(r)} = \frac{\alpha_{im} + \frac{1}{2}}{\gamma_{im} + \frac{1}{2} \sum_{k=1}^K \delta(y_{im}, \mu_{km}^{(r)}, s_{km}^{(r)}) q_{Z_i}^{(r)}(k)}, \quad (5)$$

where $\delta(y, \mu, s) = (y - \mu)^2/s$ is the squared Mahalanobis distance between y and μ (when the variance is s) and $q_{Z_i}^{(r)}(k)$ stands for $q_Z^{(r)}(\mathbf{Z}_i = k)$. For a given sequence m , expression (5) shows that the expected weight $\bar{\omega}_{im}^{(r)}$ at voxel i is lower when $\bar{\delta}(y_{im}) = \sum_{k=1}^K \delta(y_{im}, \mu_{km}^{(r)}, s_{km}^{(r)}) q_{Z_i}^{(r)}(k)$ is higher. The quantity denoted by $\bar{\delta}(y_{im})$ can be interpreted as the expectation, with regard to $q_{Z_i}^{(r)}$ of the Mahalanobis distance between y_{im} and the mean of its tissue class. A large $\bar{\delta}(y_{im})$ is typical of a model outlier while a small $\bar{\delta}(y_{im})$ corresponds to an inlier. The value of $\bar{\omega}_{im}^{(r)}$ also depends on the expert weight through $\alpha_{im} = \gamma_{im} \omega_{im}^{exp} + 1$. The higher ω_{im}^{exp} the higher $\bar{\omega}_{im}^{(r)}$ is. It appears then that the value of the expected weight as given by (5) is a balance between the atypicality of the voxel and the expert weighting for this voxel.

The M-step (4) can be divided into two independent steps leading respectively to $\beta^{(r+1)}$ and $\phi^{(r+1)}$. The maximization over β corresponds to the M-step obtained for a standard Hidden MRF model and can be solved using a mean field like approximation as in [3]. For the updating of ϕ , the maximization leads straightforwardly to

$$\mu_{km}^{(r+1)} = \frac{\sum_{i=1}^N q_{Z_i}^{(r)}(k) \bar{\omega}_{im}^{(r)} y_{im}}{\sum_{i=1}^N q_{Z_i}^{(r)}(k) \bar{\omega}_{im}^{(r)}}$$

$$\text{and } s_{km}^{(r+1)} = \frac{\sum_{i=1}^N q_{Z_i}^{(r)}(k) \bar{\omega}_{im}^{(r)} (y_{im} - \mu_{km}^{(r+1)})^2}{\sum_{i=1}^N q_{Z_i}^{(r)}(k)}, \text{ where it appears}$$

that voxels with small expected weights have small impact on the Gaussian parameter values. As justified in [9] par.7.5.3, we can then replace the divisor $\sum_{i=1}^N q_{Z_i}^{(r)}(k)$ in the $s_{km}^{(r+1)}$ formula by

$$\sum_{i=1}^N q_{Z_i}^{(r)}(k) \bar{\omega}_{im}^{(r)}.$$

4. RESULTS

Lesion segmentation procedure. Following the intuition that lesion voxels should be weighted more to be appropriately identified, we propose to set the expert weights to a value $\omega_{\mathcal{L}}$ greater than 1 for all voxels in a region \mathcal{L} while the others are weighted 1. To determine region \mathcal{L} , we propose to apply our algorithm with $K = 3$, considering only the three normal tissue classes (with all ω_{im}^{exp} and γ_{im} set to 1). In this preliminary step, the ξ parameters in the MRF prior are set to $\xi_{ik} = \log f_{ik}$ where f_{ik} is the normalized value given by a normal tissue atlas. We used the ICBM452 probabilistic atlas from The International Consortium for Brain Mapping¹. The interaction parameter η is also fixed as specified below. In such a three-class model, lesions voxels are likely to appear as outliers and then assigned a low weight. Identifying these outliers can then be done directly by thresholding the estimated weights as given by (5) or equivalently the expected Mahalanobis distances $\delta(y_{im})$. In our experiments, the threshold for the weights is found using a chi-squared percentile to be specified below (see [9] 7.3 for justification). The region \mathcal{L} is deduced by thresholding the more informative weight map (according to medical expertise, T1, Flair or DW in our experiments). We note that the selected voxels are not just outliers with respect to the tissue model, but also with respect to the MRF and prior atlas model. The candidate region is refined using additional intensity constraints, as in [14, 6, 7].

The lesion segmentation can then be carried out using our model with $K = 4$ classes. In this second step, we propose to set γ_{im} s according to: $\gamma_{im} = \gamma_{\mathcal{L}}$ for all $i \in V$ and $\gamma_{im} = \gamma_{\bar{\mathcal{L}}}$ for all $i \notin V$, where $\gamma_{\mathcal{L}}$ and $\gamma_{\bar{\mathcal{L}}}$ are values to be specified. The γ_{im} parameters are related to the variance of the weight priors and therefore express the confidence in prior expert knowledge. A high γ_{im} induces a higher impact of the prior in the estimation process. In practice, this means that a high γ_{im} will constrain successive weight estimations to the vicinity of the initial expert weight ω_{im}^{exp} . We propose setting $\gamma_{\bar{\mathcal{L}}}$ to a high value (e.g. $\gamma_{\bar{\mathcal{L}}} = 1000$) so as to express our a priori trust in the estimation of the normal brain tissue classes from the preliminary first step. The $\gamma_{\mathcal{L}}$ value is then set to a lower value to allow the corresponding average weights $\bar{\omega}_{im}$ to vary more. As regards the external field parameters ξ , they are considered constant over voxels so that ξ reduces to a single vector ${}^t(\xi_1 \dots \xi_K)$, that is estimated. Also, to carry out the lesion segmentation algorithm with $K = 4$, an initial classification is required. It is computed, from the result of the preceding 3-class segmentation, by assigning all the voxels in \mathcal{L} to the lesion class and by using the final segmentation obtained with the 3-class model to initialize the normal tissue classes. It follows that our method requires the choice of four values: the chi-squared percentile, the weight value $\omega_{\mathcal{L}}$, the $\gamma_{\mathcal{L}}$ value that expresses confidence in the prior and the interaction parameter η . Using simulated data, we first perform a number of experiments to assess the sensitivity of our method to these parameter values. Following this analysis, not reported here, we propose to set the chi-squared percentile as follows, so as to limit the number of false positives in \mathcal{L} . For different levels of the chi-squared percentile varying from 99% to 99.999%, we compute the percentage of voxels in the corresponding \mathcal{L} . We then select the region \mathcal{L} for which this percentage is closest to 0.4%. If this percentage is greater than 0.4%, the expert weight $\omega_{\mathcal{L}}$ is fixed to $\omega_{\mathcal{L}} = 2$ and it is set to $\omega_{\mathcal{L}} = 10$ otherwise. Large values of $\omega_{\mathcal{L}}$ make the lesion class more representative and handles the possibility of very small lesions, while a small $\omega_{\mathcal{L}}$ ensures that the weighting of a large candidate lesion region does not affect the estimation of other classes. We set $\gamma_{\mathcal{L}} = 10$ to allow some flexibility in the weight

estimation. The Potts prior is specified by fixing η , as suggested in [2], to some increasing values from 0.1 to 0.2 to be more robust to noise.

Results on simulated data. We consider simulated images with multiple sclerosis (MS) lesions, from the BrainWeb database², for varying levels of nonuniformity and noise. We use three co-registered modalities (T1-weighted, T2-weighted and PD sequences), with three types of lesions (mild, moderate and severe). The noise level is set successively to 3%, 5%, 7% and 9%. The nonuniformity level is set to 0%. Dealing with nonuniformities is important when delineating lesions but this issue is reported in future work (see Section 5). The obtained Dice similarity coefficients (DSC) [5] are reported in Table 1. To our knowledge, very few other BrainWeb MS results exist in the literature. A recent paper [7] provides results for all lesion loads, three non-uniformity levels and the above levels of noise. Another paper [10] reports results for the three lesion loads but only in the 3% noise 0% nonuniformity case while [6] reports DSC values for all above levels of noise but only in the moderate lesion case. Note however, that the results in [6] cannot be directly compared to ours as a number of slices were removed (61 of 181 were kept) before processing, which tends to produce DSC's overestimated by a few percent. For the 3%, 5%, 7% and 9% noise cases reduced to 61 slices, [6] obtained respectively 77%, 77%, 75% and 73%. We then apply the method described in [14] using the EMS software package³. We use the default setting of a 3D polynomial of order 4 with a Mahalanobis threshold of 3. The results from these methods and the gain in DSC values using ours are reported in Table 1. These values show the good performance of our method. However, it appears that the segmentation quality decreases as the noise level increases. For comparison, when applying our method on data previously denoised with the Non Local Means method [4], we observe significantly higher DSC's especially for 7% and 9% noise levels and mild lesions.

Real data sets. We use co-registered T1-weighted, T2-weighted and Flair sequences (voxel size $1mm^2 \times 3mm$) from three patients with MS for which the lesions were manually delineated by an expert. As an illustration, we show also how the method can be applied on a stroke data set for which three co-registered sequences (T2, DW and Flair) were available (voxel size $1mm^2 \times 5mm$). In all cases, the images are pre-processed for denoising [4] and inhomogeneity intensity correction [8]. For the MS data, we obtain DSC values of 82% (patient 1), 56% (patient 2) and 45% (patient 3) using our method and 57%, 54% and 46% using the EMS package [14]. The segmentation for patient 3 is shown in Figure 1. For comparison, for three sequences, T1-w, T2-w and PD, the authors in [14] report a best DSC of 45% over 20 data sets. In [11], using PD, T2 and Flair images, an average DSC of 78% \pm 12 over 23 data sets is obtained with a method that requires human intervention in addition to parameter tuning. The result obtained for the stroke example is shown in Figure 2 (b) (the DSC is 63%). To report other results on stroke lesions, using single T1 sequences for eight real cases, an average DSC of 64% \pm 10 is found in [13].

5. DISCUSSION

We propose an adaptive weighting scheme for multiple MR sequences for Brain lesion segmentation. It uses a tissue segmentation model and is not specific to a lesion type. Our approach differs from the mainstream approaches in that lesion voxels are not considered solely as outliers to be detected. The general idea is to first identify voxels that would not be well represented by a normal tissue model

¹http://www.loni.ucla.edu/Atlases/Atlas_Detail.jsp?atlas_id=6

²<http://www.bic.mni.mcgill.ca/brainweb/>

³<http://www.medicalimagecomputing.com/EMS>

| Method | 3% | 5% | 7% | 9% |
|------------------|----------------|-----------|-----------------|-----------------|
| Mild lesions | | | | |
| AWEM | 68 (+1) | 49 (-21) | 36 (+2) | 12 (+8) |
| [7] | 67 | 70 | 34 | 0 |
| [14] | 56 | 33 | 13 | 4 |
| [10] | 52 | NA | NA | NA |
| Moderate lesions | | | | |
| AWEM | 86 (+7) | 80 (-1) | 73 (+14) | 64 (+27) |
| [7] | 72 | 81 | 59 | 29 |
| [14] | 79 | 69 | 52 | 37 |
| [10] | 63 | NA | NA | NA |
| Severe lesions | | | | |
| AWEM | 92 (+7) | 86 (-2) | 78 (+6) | 68 (+27) |
| [7] | 79 | 88 | 72 | 41 |
| [14] | 85 | 72 | 56 | 41 |
| [10] | 82 | NA | NA | NA |

Table 1. DSC results (%) on MS Brain Web simulated data, for various lesion sizes and noise levels. Comparison of different methods: AWEM for our Adaptive Weighted EM, Garcia-Lorenzo & al.'s method [7], Van Leemput & al.'s method [14] and Rousseau & al.'s method [10]. The corresponding gain/loss over the best comparable results is given in parenthesis. NA means not available.

in order to use them to bias, via the weight prior specification, the model toward the identification of a lesion class. The weight prior, and in particular the expert weights, require selection. We propose an automatic selection method and future work includes investigating other settings, particularly in relation to targeting specific lesion types. More generally, robustness to intensity nonuniformity could be provided by incorporating the local estimation principle of [12]. Another interesting generalization would be to use full covariance matrices for the Gaussian intensity distributions to handle possible strong correlations between the different sequences. They would result in more complex estimation formulas but this could be an important refinement for applications using temporal multi-sequence data (eg. follow-up of lesions). As a generalization of Gaussian mixtures, our model has larger modelling capabilities. It is entirely based on a mathematical framework in which each step is theoretically well-founded. Its ability to provide good results, when application related expertise is difficult to formalize, is particularly promising for medical applications. Therefore, it has advantages over other methods that include ad-hoc processing while being open to incorporation of more task dependent information.

6. REFERENCES

- [1] M. Beal and Z. Ghahramani. *The variational Bayesian EM Algorithm for incomplete data: with application to scoring graphical model structures*. Bayesian Statistics. Oxford University Press, 2003.
- [2] J. Besag. On the statistical analysis of dirty pictures. *J. Roy. Statist. Soc. Ser. B*, 48(3):259–302, 1986.
- [3] G. Celeux, F. Forbes, and N. Peyrard. EM procedures using mean field-like approximations for Markov model-based image segmentation. *Pat. Rec.*, 36(1):131–144, 2003.
- [4] P. Coupe, P. Yger, S. Prima, P. Hellier, C. Kervrann, and C. Barillot. An Optimized Blockwise Non Local Means Denoising Filter for 3D Magnetic Resonance Images. *IEEE Transactions on Medical Imaging*, 27(4):425–441, April 2008.
- [5] L. R. Dice. Measures of the amount of ecologic association between species. *Ecology*, 26:297–302, 1945.
- [6] O. Freifeld, H. Greenspan, and J. Goldberger. Lesion detection in noisy MR brain images using constrained GMM and active contours. In *IEEE ISBI*, pages 596–599, 2007.
- [7] D. Garcia-Lorenzo, L. Lecoecur, D.L. Arnold, D. L. Collins, and C. Barillot. Multiple Sclerosis lesion segmentation using an automatic multimodal graph cuts. In *MICCAI*, pages 584–591, 2009.
- [8] J-F. Mangin. Entropy minimization for automatic correction of intensity nonuniformity. *Mathematical Methods in Biomedical Image Analysis, IEEE Workshop on*, 0:162, 2000.
- [9] G.J. McLachlan and D. Peel. *Finite Mixture Models*. Wiley, 2000.
- [10] F. Rousseau, F. Blanc, J. de Seze, L. Rumbac, and J.P. Armspach. An a contrario approach for outliers segmentation: application to multiple sclerosis in MRI. In *IEEE ISBI*, pages 9–12, 2008.
- [11] B. R. Sajja, S. Datta, R. He, M. Mehta, R. K. Gupta, J. S. Wolinsky, and P. A. Narayana. Unified approach for multiple sclerosis lesion segmentation on brain MRI. *Ann. Biomed. Eng.*, 34(1):142–151, 2006.
- [12] B. Scherrer, F. Forbes, C. Garbay, and M. Dojat. Fully Bayesian Joint Model for MR Brain Scan Tissue and Structure Segmentation. In *MICCAI*, pages 1066–1074, 2008.
- [13] M.L. Seghier, A. Ramlackhansingh, J. Crinion, A.P. Leff, and C. J. Price. Lesion identification using unified segmentation-normalisation models and fuzzy clustering. *Neuroimage*, 41:1253–1266, 2008.
- [14] K. Van Leemput, F. Maes, D. Vandermeulen, A. Colchester, and P. Suetens. Automated segmentation of multiple sclerosis lesions by model outlier detection. *IEEE trans. Med. Im.*, 20(8):677–688, 2001.

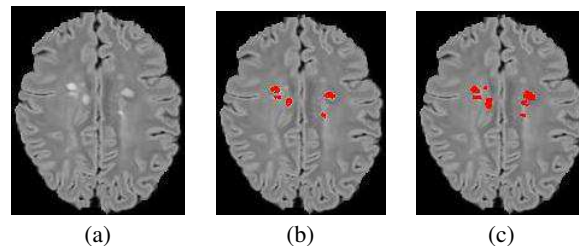


Fig. 1. Real MS data, patient 3. (a): Flair image. (b): identified lesions with our approach (DSC 45%). (c): ground truth .

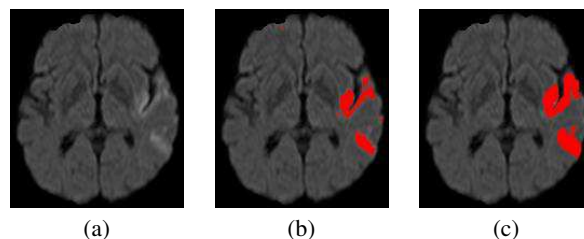


Fig. 2. Real stroke data. (a): DW image. (b): identified lesions with our approach (DSC 63%). (c): ground truth.