



**HAL**  
open science

# A comprehensive framework for the detection of individual brain perfusion abnormalities using Arterial Spin Labeling

Camille Maumet, Pierre Maurel, Jean-Christophe Ferré, Christian Barillot

► **To cite this version:**

Camille Maumet, Pierre Maurel, Jean-Christophe Ferré, Christian Barillot. A comprehensive framework for the detection of individual brain perfusion abnormalities using Arterial Spin Labeling. International Conference on Medical Image Computing and Computer Assisted Intervention (MICCAI), Oct 2012, Nice, France. pp.542-549. inserm-00720593

**HAL Id: inserm-00720593**

**<https://inserm.hal.science/inserm-00720593v1>**

Submitted on 16 Oct 2012

**HAL** is a multi-disciplinary open access archive for the deposit and dissemination of scientific research documents, whether they are published or not. The documents may come from teaching and research institutions in France or abroad, or from public or private research centers.

L'archive ouverte pluridisciplinaire **HAL**, est destinée au dépôt et à la diffusion de documents scientifiques de niveau recherche, publiés ou non, émanant des établissements d'enseignement et de recherche français ou étrangers, des laboratoires publics ou privés.

# A comprehensive framework for the detection of individual brain perfusion abnormalities using Arterial Spin Labeling

Camille Maumet<sup>1,2,3,4</sup>, Pierre Maurel<sup>1,2,3,4</sup>, Jean-Christophe Ferré<sup>1,2,3,4,5</sup>,  
Christian Barillot<sup>1,2,3,4</sup>

1. University of Rennes 1, Faculty of medicine, F-35043 Rennes, France
2. INSERM, U746, F-35042 Rennes, France
3. CNRS, IRISA, UMR 6074, F-35042 Rennes, France
4. Inria, VISAGES project-team, F-35042 Rennes, France
5. CHU Rennes, Department of Neuroradiology, F-35033 Rennes, France

**Abstract.** Arterial Spin Labeling (ASL) enables measuring cerebral blood flow in MRI without injection of a contrast agent. Perfusion measured by ASL carries relevant information for patients suffering from pathologies associated with singular perfusion patterns. However, to date, individual identification of abnormal perfusion patterns in ASL usually relies on visual inspection or manual delineation of regions of interest.

In this paper, we introduce a new framework to automatically outline patterns of abnormal perfusion in individual patients by means of an ASL template. We compare two models of normal perfusion and assess the quality of detections comparing an *a contrario* approach to the Generalized Linear Model (GLM).

## 1 Introduction

Perfusion is the process through which the blood provides nutrients and oxygen to the tissues by means of micro-circulation. ASL is a recent MRI technique [8] that allows perfusion measurement and quantification of Cerebral Blood Flow (CBF). Contrary to Dynamic Susceptibility weighted Contrast (DSC) imaging – the most validated technique to measure perfusion with MRI – ASL does not rely on the injection of an exogenous contrast agent. In a few words, blood water is labeled with a radio-frequency pulse in the neck and, after a delay called inversion time, a labeled image of the brain is acquired. The difference between the label image and a control image, acquired without labeling, leads to a perfusion weighted image. Due to the low signal to noise ratio (SNR) of the ASL sequence, a single pair of control and label image is not sufficient to measure perfusion, the acquisition is usually repeated several times leading to  $R$  pairs of images. Perfusion information is then extracted by averaging. A model is applied to this image to obtain a quantification of CBF. ASL is particularly well suited for longitudinal studies or studies of patients with difficult venous access such as children. Its non-invasiveness makes ASL the method of choice

for the study of perfusion of healthy subjects. However this comes at the cost of low SNR and lower spatial resolution than DSC.

Today, ASL studies are able to outline differential patterns of perfusion in pathological populations, including Alzheimer disease [2] or schizophrenic patients. At the same time, the interest of ASL in the study of individual patients presenting singular perfusion abnormalities was also demonstrated. In these pathologies, the highly variable pathological patterns preclude group analysis. Abnormal patterns of perfusion must then be identified at the subject level. It is for instance the case of tumors, strokes or multiple sclerosis lesions. For patients diagnosed with tumors, the clinician is interested by hyperperfusions that would reveal the grade of the tumor [12]. In this context, perfusion abnormality studies usually rely on comparing the level of perfusion in the lesion to the contralateral normal tissue. This method is based on manual regions of interest delineations, a time-consuming task prone to inter-expert variability.

The aim of this paper is to present an automatic framework to identify hypoperfused and hyperperfused regions in individual patients by comparison to a model of normal perfusion. In [9], we investigated the ability to detect hypoperfused and hyperperfused regions on patients using a template of normal perfusion. Here we propose a new model that takes into account the first level variance and we focus on quantitative evaluation of this framework.

Section 2 presents the method developed, that focuses on two aspects : the computation of an appropriate model for normal perfusion and the selection of an adequate test to detect perfusion abnormalities at the subject level. In Section 3 the framework is evaluated based on 12 subjects diagnosed with brain tumors using a perfusion template derived from 35 healthy subjects. False positive rates (FPR) are estimated and the quality of detections are assessed.

## 2 Material and Methods

### 2.1 ASL template: a model of normal perfusion

Given  $perf_i^v$ ,  $i \in 1..N$ , a set of perfusion maps in a group of  $N$  control subjects, we want to compute a model of normal perfusion  $Perf^v$ , referred as the perfusion template. This model is specific to each voxel  $v$ . For ease of notation, the  $v$  superscript is omitted in the following.

In [10] or [9] the perfusion signal  $Perf$ , is modeled by the normal distribution:

$$Perf \sim N(\mu_{pop}, \sigma_{pop}^2). \quad (1)$$

The population mean,  $\mu_{pop}$ , and variance,  $\sigma_{pop}^2$ , are approximated by  $\hat{\mu}_{pop}$  and  $\hat{\sigma}_{pop}^2$ , the sample mean and variance of the perfusion maps in the control group.

However, the above specified model ignores the error made when estimating the perfusion maps  $perf_i$  as the average of  $R$  repeats (control minus label pairs). This error is dependent on the first level variance that has shown to carry relevant information in group fMRI studies [3]. To simplify the model, we consider that

all subjects in the template group have the same first level variance  $\sigma_{sub,tpl}^2$ .  $Perf$  is then modeled by the normal distribution:

$$Perf \sim N(\mu_{pop}, \sigma_{pop}^2 + \sigma_{sub,tpl}^2). \quad (2)$$

The first level variance,  $\sigma_{sub,i}^2$ , can be approximated by  $\hat{\sigma}_{sub,i}^2 = \frac{\hat{\sigma}_{rep,i}^2}{R}$ , where  $\hat{\sigma}_{rep,i}^2$  is the sample variance over the  $R$  repeats for the  $i^{th}$  subject. The first level variance in the template group  $\sigma_{sub,tpl}^2$  is estimated by  $\hat{\sigma}_{sub,tpl}^2 = \frac{\sum_{i=1}^N \hat{\sigma}_{sub,i}^2}{N}$ . In this model,  $\sigma_{pop}^2$  can no longer be estimated as the sample variance of the perfusion maps in the control group since this estimate includes first level variance. To correct for this bias,  $\sigma_{pop}^2$  can be approximated by the method of moments [5] subtracting the control subjects first level variance,  $\sigma_{sub,tpl}^2$ , from the sample variance. Negative variance estimates are avoided by enforcing positivity of  $\hat{\sigma}_{pop}^2$ .

## 2.2 Detection of hypoperfused and hyperperfused regions in a single subject

Given the model of normal perfusion  $Perf$ , we are interested in drawing conclusions about a new observation  $perf_{N+1}$ , for instance a patient map.

**Uncorrected probability maps:** Assuming Gaussian errors, (3) presents the best linear unbiased estimator of the patient versus group effect  $\beta$ , ignoring the first level variance:

$$\hat{\beta} = perf_{N+1} - \hat{\mu}_{pop}, \quad \text{Var}(\hat{\beta}) = \sigma_{pop}^2 \times \left(\frac{1}{N} + 1\right). \quad (3)$$

This model is at the basis of the well-known two-sample t-test group analysis. Since  $\hat{\sigma}_{pop}^2$  is estimated by the sample variance, this model is also valid in case of homoscedasticity (same first level variance for all subjects).

The best linear unbiased estimator of the patient versus group effect,  $\beta$ , with explicit first level variance, is expressed in (4).

$$\hat{\beta} = perf_{N+1} - \hat{\mu}_{pop}, \quad \text{Var}(\hat{\beta}) = \frac{\sigma_{pop}^2 + \sigma_{sub,tpl}^2}{N} + \sigma_{pop}^2 + \sigma_{sub,N+1}^2 \quad (4)$$

The first level variance,  $\sigma_{sub,N+1}^2$ , can be approximated by  $\hat{\sigma}_{sub,N+1}^2 = \frac{\hat{\sigma}_{rep,N+1}^2}{R}$ . Assuming that a unique patient map cannot be of better quality than the template maps,  $\sigma_{sub,N+1}^2$  is constrained to be greater or equal to  $\sigma_{sub,tpl}^2$ .

Ignoring the error on the variance estimates, under the null hypothesis that  $perf_{N+1}$  follows the template distribution,  $\frac{\hat{\beta}}{\sqrt{\text{Var}(\hat{\beta})}}$  follows a standard normal distribution. To the aim of discriminating hypoperfusions from hyperperfusions, positive and negative effects are studied separately.

**GLM-FDR** Most of the GLM approach has been described in the previous section. However, given the large number of voxels found in a typical ASL image a correction for multiple comparisons is required to ensure an acceptable FPR. The False Discovery Rate (FDR) algorithm insures that no more than a ratio  $q$  (usually  $q = 0.05$ ) of detections are false positives. In GLM experiments, the data is usually pre-smoothed with a Gaussian kernel.

**A contrario** : The *a contrario* approach, introduced in [7], is inspired from the Gestalt laws of perception. This theory has later been applied to medical image processing [1, 11]. In our context, the *a contrario* method uses the uncorrected p-value map and takes an original approach to account for multiple comparison. The inference is done by looking into a spherical neighborhood. In the first step, the uncorrected p-value map is thresholded using a predefined set of p-values,  $L = \{p_1 \dots p_T\}$ , to generate a set of binary maps referred as rare event maps. For instance with a p-value of 0.001, voxels verifying  $p < 0.001$  are outlined as rare events. Then, for each rare event maps, the number  $k^v$  of rare events found in a neighborhood around each voxel  $v$  is computed. The probability  $\pi_i^v$  of having  $k^v$  or more rare events is then estimated considering that the number of rare events in the neighborhood comes from a binomial distribution:  $\pi_i^v = P(X \geq k^v)$ , where  $X \sim B(n, p_i)$ ,  $p_i \in L$  and  $n$  is the number of voxels in the studied neighborhood. For the sake of multiple comparisons correction, a number of false alarm (NFA) map is then computed by  $NFA_v = VT \min(\pi_i^v)$  where  $V$  is the total number of voxels.  $VT$  therefore corresponds to the total number of tests. Voxels verifying  $NFA < 1$  are outlined as detection. Due to the neighborhood constraint, a voxel can be detected both as hyperperfused and hypoperfused. To avoid this confusing situation, a voxel cannot be outlined as hyperperfused (rep. hypoperfused) if its value is smaller (resp. greater) than the template mean. In this paper we worked with the following set of p-values  $P = \{0.001, 0.005\}$ .

## 3 Results

### 3.1 Data

**Data** : 36 healthy volunteers and 14 patients diagnosed with brain tumors were involved in this study. Data acquisition was performed on a 3T Siemens Verio MR scanner with a 32-channel head-coil. The imaging protocol included a 3D T1-weighted anatomical sequence (T1) (TR: 1900 ms, TE: 2.27 ms, resolution:  $1 \times 1 \times 1$  mm<sup>3</sup>), a PICORE Q2TIPS sequence with crusher gradients (TR: 3000 ms, TE: 18 ms, resolution:  $3 \times 3$  mm<sup>2</sup>, slice thickness: 7 mm, TI: 1700 ms,  $TI_{wd}$ : 700 ms, R = 60). In addition to these sequences, the patients also underwent a 3D T1 post gadolinium (T1-Gd) sequence (TR: 1900 ms, TE: 2.27 ms, resolution:  $1 \times 1 \times 1$  mm<sup>3</sup>) and a T2 FLAIR sequence (TR: 9000 ms, TE: 90 ms, resolution:  $0.69 \times 0.69$  mm<sup>2</sup>, slice thickness: 4 mm). Three subjects (1 control, 2 patients) were excluded for abnormally low signal.

**Pre-processing** : Image pre-processing was performed using the Matlab toolbox SPM8 (Wellcome Department of Imaging Neuroscience, University College, London). The anatomical image of each subject was segmented using the unified segmentation. For each subject, an anatomical brain mask was created, excluding voxels with less than 50% of brain tissue in subsequent statistical analyses. A six-parameter rigid-body registration of the ASL volumes was carried out in order to reduce undesired effects due to subject motion. Coregistration on grey matter map was then performed based on mutual information. The average of unlabeled volumes was used to estimate the geometrical transformation to apply to each volume. The 60 unlabeled and labeled ASL volumes were pair-wise subtracted and averaged in order to obtain a perfusion weighted map per subject. A standard kinetic model [4] was then applied in order to get ASL CBF.

In order to account for inter-subject variations in CBF, each map was normalised by the mean perfusion value computed from all voxels containing more than 70% of GM [10]. In patients, tumorous tissue was excluded from the calculation. Spatial normalisation parameters estimated during the segmentation step were then applied to the T1 and ASL CBF map in order to normalise the subjects into the ICBM template space [6].

### 3.2 Influence of first level variance in the model of normal perfusion

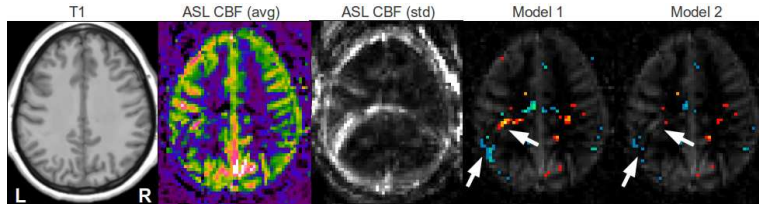
**Quantitative comparison:** We compared the basic model of normal perfusion, presented in (1), to the model with explicit first level variance estimation, outlined in (2), by means of FPR estimation. FPR estimates were computed by leave-one-out cross-validation on the control group using the tests specified in (3) and (4). Given the absence of correction for multiple comparisons the theoretical FPR was therefore equal to the selected p-value:  $p=0.05$ .

With the basic model (1) the FPR was 6.5%, outlining the error made by ignoring first level variance. With the model including first level variance (2), the FPR was reduced to 4.3%. Though the difference was not strong, the FPR of the model including first level variance was closer to the theoretical FPR. Moreover, benefits could potentially be larger in the study of patients presenting more pronounced patterns of noise. As an example, the following subsection illustrates the benefits in a single subject presenting strong ghosting artefacts.

**Qualitative comparison:** Figure 1 illustrates the benefits of the explicit modeling of first level variance. The ghosting and motion artefacts, outlined by white arrows, indeed corresponds to regions of high standard deviation. Including the first level variance in the model reduces the artefactual detections and enables the comparison of individuals with different patterns of noise.

### 3.3 Validation of detections

**Metrics definition :** Quantitative evaluation of the detections and comparison between detection methods are challenging tasks. This is mainly because, like in



**Fig. 1.** False positive detections in a control subject perfusion map presenting ghosting artefacts. From left to right: T1, ASL CBF, standard deviation of ASL CBF, ASL CBF with hypo- (winter color-map) and hyper-perfusions (hot color-map) overlaid for the basic model (Model 1) and for the model including first level variance (Model 2).

many other medical imaging problems, the ground truth is not clearly stated. We chose to evaluate this framework on patients diagnosed with tumor pathology because perfusion abnormalities are better understood in this context. Based on clinical knowledge, we set the following rules to get an idea of the specificity and sensitivity of the methods. It is however important to keep in mind that in the absence of a known delineation of the actual hyperperfusion and hypoperfusion, true specificity and sensitivity cannot be calculated:

- **pseudo-specificity:** According to clinical knowledge, in the absence of metastasis, the perfusion abnormalities should be confined to the affected tissue (tumor and oedema) identifiable on T1-Gd and T2. The proportion of the non-affected tissue undetected was used as a measure of pseudo-specificity.
- **pseudo-sensitivity:** Though hyperperfused regions can be extended out of the T1-Gd hyper-signal, these hypersignals are nevertheless indicative of the presence of hyperperfusions [12]. The proportion of the hyper-signal in T1-Gd detected as hyperperfusion was used as a measure of pseudo-sensitivity.

Tumor segmentation was done using a semi-automated method based of the T2 and T1-Gd images and visually inspected by an expert neuro-radiologist. One subject was excluded in the pseudo-specificity calculation because its T1-Gd hyper-signal was located in the cerebellum out of the coverage of the template.

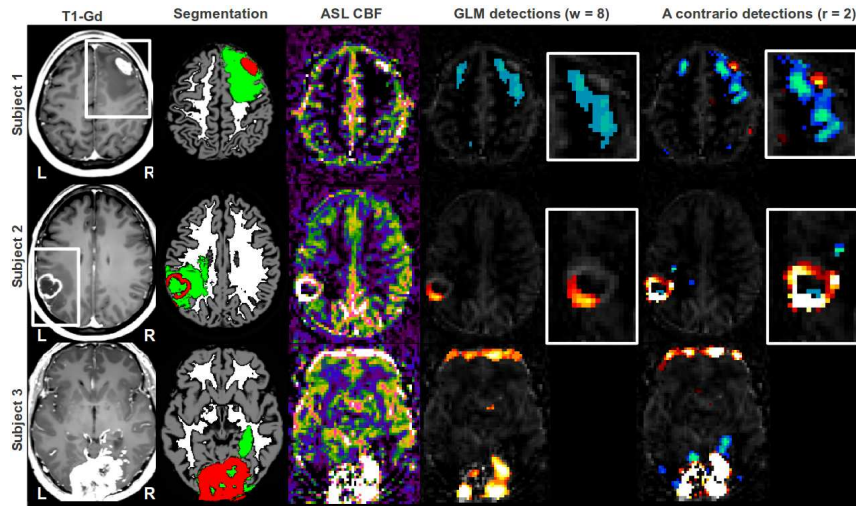
**Quantitative evaluation:** Table 1 presents the pseudo-specificity and pseudo-sensitivity obtained with different parameters. Based on these criteria we cannot identify a method as being definitely better than the other. This study however outlines the different behaviors of the two methods. The GLM with FDR correction appears to be more conservative with a smaller FPR at the cost of false negatives. According to these measures, the choice of the method will therefore depend on the application as a trade-off between specificity and sensitivity.

**Qualitative comparison:** Though the quantitative analysis did not outline significant difference between the *a contrario* and the GLM methods, there are however strong differences when looking at the detections patient by patient. We

**Table 1.** Pseudo-sensitivity and pseudo-specificity of detections for GLM with different full width at half maximum  $w$  (in  $\text{mm}^3$ ) smoothing kernels and *a contrario* methods with different sphere radii  $r$  (in voxels).

	GLM					<i>a contrario</i>	
	$w = 2$	$w = 4$	$w = 6$	$w = 8$	$w = 10$	$r = 1$	$r = 2$
<i>pseudo – sensitivity</i>	0.29	0.31	0.32	<b>0.33</b>	0.34	0.37	<b>0.53</b>
<i>pseudo – specificity</i>	0.98	0.97	0.96	<b>0.95</b>	0.94	0.96	<b>0.89</b>

chose three subjects to illustrate this argument. Figure 2 presents the detections obtained by GLM with smoothing kernel of 8 and *a contrario* with sphere radius of 2 which are the parameters leading to the best visual results for each method. Subject 1 is affected by a tumor in the right frontal lobe. The hypoperfusion of the oedema is detected by both the GLM and the *a contrario* methods. However only the latter is able to outline the central hyperperfusion. Subject 2, presents a left temporal glioblastoma characterised by a ring shaped hypersignal. While the *a contrario* approach detects most of the hypersignal ring, the GLM detection is restricted to the area presenting the highest level of hyperperfusion. Subject 3 suffers from a meningioma of both occipital lobes, the hyperperfusion is correctly detected by both methods. The *a contrario* method detects additional hypoperfusions in the oedema. Both methods detect an artefactual hyperperfusion, due



**Fig. 2.** Detection of perfusion abnormalities based on GLM and *a contrario* methods on 3 representative patients with brain tumors. From left to right: T1-Gd, Segmentation in GM (grey), WM (white), oedema and necrosis (green) and T1-Gd hypersignal (red), ASL CBF with hypoperfusions (winter color-map) and hyperperfusions (hot color-map) overlaid, close-ups in the regions outlined by a white frame in the T1-Gd.



to motion, in the frontal lobe. The *a contrario* approach also detects artefactual hypoperfusions due to motion in the occipital lobe.

## 4 Conclusion

We have presented a comprehensive framework for the detection of brain perfusion abnormalities in individual patients by comparison to a template of healthy subjects. We outlined the interest of modeling the first level variance in the perfusion models. In future work, this might ease the analysis of patient data characterised by a higher level of motion and related artefacts. It also opens the field to comparison between ASL sequences displaying different patterns of noise. We applied this model to 12 patients suffering from brain tumors and compared an original method, the *a contrario* approach, to the classical GLM with FDR correction. Quantitative analysis outlined the conservativeness of the GLM, leading to a low FPR at the cost of more false negatives. In radiological practice, the FPR is however less pregnant since false positives can easily be ruled out by a clinician. In a qualitative analysis we pointed out the benefits of the *a contrario* approach: a better conservation of the hypoperfusions and hyperperfusions boundaries and a greater sensitivity. This increase in sensitivity might be crucial in the study of pathologies presenting more subtle patterns of abnormal perfusion such as multiple sclerosis.

## References

1. Aguerrebere, C., Sprechmann, P., et al.: A-contrario localization of epileptogenic zones in SPECT images. In: ISBI. pp. 570–573. IEEE (2009)
2. Alsop, D.C., Detre, J.A., Grossman, M.: Assessment of Cerebral Blood Flow in Alzheimers Disease by Spin-Labeled Magnetic Resonance Imaging. *Annals of neurology* 47(1), 93–100 (2000)
3. Beckmann, C.F., Jenkinson, M., Smith, S.M.: General multilevel linear modeling for group analysis in FMRI. *NeuroImage* 20(2), 1052–63 (2003)
4. Buxton, R.B., Frank, L.R., et al.: A general kinetic model for quantitative perfusion imaging with arterial spin labeling. *MRM* 40(3), 383–96 (1998)
5. Chen, G., Saad, Z.S., et al.: Fmri group analysis combining effect estimates and their variances. *NeuroImage* 60(1), 747–765 (2012)
6. Crinion, J., Ashburner, J., et al.: Spatial normalization of lesioned brains: performance evaluation and impact on fmri analyses. *NeuroImage* 37(3), 866–75 (2007)
7. Desolneux, A., Moisan, L., Morel, J.: A grouping principle and four applications. *TPAMI* 25(4), 508–513 (2003)
8. Detre, J., Leigh, J., et al.: Perfusion imaging. *MRM* 23, 37–45 (1992)
9. Maumet, C., Maurel, P., et al.: A contrario detection of focal brain perfusion abnormalities based on an ASL template. In: ISBI. pp. 1176–1179 (2012)
10. Petr, J., Ferre, J.C., et al.: Construction and evaluation of a quantitative arterial spin labeling brain perfusion template at 3t. In: ISBI. pp. 1035–1038. IEEE (2011)
11. Rousseau, F., Blanc, F., et al.: An a contrario approach for outliers segmentation: Application to Multiple Sclerosis in MRI. ISBI pp. 9–12 (2008)
12. Weber, M.A., Zoubaa, S., et al.: Diagnostic performance of spectroscopic and perfusion MRI for distinction of brain tumors. *Neurology* 66(12), 1899–906 (2006)