



HAL
open science

Stepwise development of MAIT cells in mouse and human.

Emmanuel Martin, Emmanuel Treiner, Livine Duban, Lucia Guerri, H el ene Laude, C ecile Toly, Virginie Premel, Anne Devys, Ivan C. Moura, Florence Tilloy, et al.

► **To cite this version:**

Emmanuel Martin, Emmanuel Treiner, Livine Duban, Lucia Guerri, H el ene Laude, et al.. Stepwise development of MAIT cells in mouse and human.. PLoS Biology, 2009, 7 (3), pp.e54. 10.1371/journal.pbio.1000054 . inserm-00707793

HAL Id: inserm-00707793

<https://inserm.hal.science/inserm-00707793>

Submitted on 13 Jun 2012

HAL is a multi-disciplinary open access archive for the deposit and dissemination of scientific research documents, whether they are published or not. The documents may come from teaching and research institutions in France or abroad, or from public or private research centers.

L'archive ouverte pluridisciplinaire **HAL**, est destin ee au d ep ot et  a la diffusion de documents scientifiques de niveau recherche, publi es ou non,  emanant des  tablissements d'enseignement et de recherche fran ais ou  trangers, des laboratoires publics ou priv es.

Stepwise Development of MAIT Cells in Mouse and Human

Emmanuel Martin^{1,2}✉, Emmanuel Treiner^{1,2,3}✉, Livine Duban^{1,2}✉, Lucia Guerri^{1,2}, H el ene Laude^{1,2}, C ecile Toly^{1,2}, Virginie Premel^{1,2}, Anne Devys⁴, Ivan C. Moura^{1,2}, Florence Tilloy^{1,2}, St ephane Cherif¹, Gabriella Vera^{1,2}, Sylvain Latour⁵, Claire Soudais^{1,2}, Olivier Lantz^{1,2*}

1 Laboratoire d'Immunologie, Institut Curie, Paris, France, 2 INSERM U932, Institut Curie, Paris, France, 3 Avenir INSERM U925, Facult e de M edecine, Amiens, France, 4  tablissement Fran ais du Sang (EFS), Nantes, France, 5 INSERM, Unit  768, H opital Necker-Enfants Malades, Paris, France

Mucosal-associated invariant T (MAIT) cells display two evolutionarily conserved features: an invariant T cell receptor (TCR) α (iTCR α) chain and restriction by the nonpolymorphic class Ib major histocompatibility complex (MHC) molecule, MHC-related molecule 1 (MR1). MR1 expression on thymus epithelial cells is not necessary for MAIT cell development but their accumulation in the gut requires MR1 expressing B cells and commensal flora. MAIT cell development is poorly known, as these cells have not been found in the thymus so far. Herein, complementary human and mouse experiments using an anti-humanV α 7.2 antibody and MAIT cell-specific iTCR α and TCR β transgenic mice in different genetic backgrounds show that MAIT cell development is a stepwise process, with an intra-thymic selection followed by peripheral expansion. Mouse MAIT cells are selected in an MR1-dependent manner both in fetal thymic organ culture and in double iTCR α and TCR β transgenic RAG knockout mice. In the latter mice, MAIT cells do not expand in the periphery unless B cells are added back by adoptive transfer, showing that B cells are not required for the initial thymic selection step but for the peripheral accumulation. In humans, contrary to natural killer T (NKT) cells, MAIT cells display a na ive phenotype in the thymus as well as in cord blood where they are in low numbers. After birth, MAIT cells acquire a memory phenotype and expand dramatically, up to 1%–4% of blood T cells. Finally, in contrast with NKT cells, human MAIT cell development is independent of the molecular adaptor SAP. Interestingly, mouse MAIT cells display a na ive phenotype and do not express the ZBTB16 transcription factor, which, in contrast, is expressed by NKT cells and the memory human MAIT cells found in the periphery after birth. In conclusion, MAIT cells are selected by MR1 in the thymus on a non-B non-T hematopoietic cell, and acquire a memory phenotype and expand in the periphery in a process dependent both upon B cells and the bacterial flora. Thus, their development follows a unique pattern at the crossroad of NKT and $\gamma\delta$ T cells.

Citation: Martin E, Treiner E, Duban L, Guerri L, Laude H, et al. (2009) Stepwise development of MAIT cells in mouse and human. *PLoS Biol* 7(3): e1000054. doi:10.1371/journal.pbio.1000054

Introduction

Unconventional T cells include several T cell receptor (TCR) $\alpha\beta^+$ major histocompatibility complex (MHC) class Ib restricted, as well as TCR $\gamma\delta^+$ subsets in both mice and humans [1,2]. They usually display tissue-specific location and are endowed with “natural memory” phenotype and functions, such as the ability to mount rapid responses in the face of a pathogenic challenge. Several pathways of development have been described for these T cell subsets, which show various degree of dependency from the thymus as well as variable requirement for their restricting MHC molecule. At one end of the spectrum, natural killer T (NKT) cells are selected, expand, and acquire their innate-like phenotype and functions in the thymus [3,4]. On the other hand, unconventional (type b) intra-epithelial lymphocytes (IEL) ontogeny can show minimal dependency upon the thymus, as they can escape the thymus at a very early stage and migrate into the gut mucosa where they achieve maturation [5]. They may even develop directly from bone marrow-derived precursors in specific intestinal lymphoid aggregates called cryptopatches [6,7]. Interestingly, both NKT and type b IEL development, phenotype, and functions are seemingly independent from any exogenous antigens such as those derived from the intestinal bacterial flora [8–10]. Finally, it has been recently demonstrated that mouse T10/T22-restricted $\gamma\delta$ T cells are

able to mature and exit the thymus in the absence of their selecting element, but that thymic selection endows them with a memory phenotype and new effector functions [11].

Among unconventional T cells, only two subsets display both a TCR and selecting MHC class Ib molecules highly conserved between species, the NKT cells and the mucosal-associated invariant T (MAIT) cells (reviewed in [3,4,12]). Indeed, these two populations express highly restricted TCR repertoires consisting of an invariant TCR α chain (mouseV α 14/humanV α 24-J α 18 for NKT cells; and mV α 19/hV α 7.2-J α 33 for MAIT cells). Both subsets are selected by

Academic Editor: Vincenzo Cerundolo, Weatherall Institute of Molecular Medicine, United Kingdom

Received September 17, 2008; **Accepted** January 23, 2009; **Published** March 10, 2009

Copyright:   2009 Martin et al. This is an open-access article distributed under the terms of the Creative Commons Attribution License, which permits unrestricted use, distribution, and reproduction in any medium, provided the original author and source are credited.

Abbreviations: FTOC, fetal thymic organ culture; LP, lamina propria; MAIT, mucosal-associated invariant T; MHC, major histocompatibility complex; MLN, mesenteric lymph node; MR1, MHC-related molecule 1; NKT, natural killer T; TCR, T cell receptor; wt, wild type

* To whom correspondence should be addressed. E-mail: olivier.lantz@curie.net

  These authors contributed equally to this work.

Author Summary

White blood cells, or lymphocytes, play an important role in defending the body from infection and disease. T lymphocytes come in many varieties with diverse functions. Mucosal-associated invariant T (MAIT) cells constitute a subset of unconventional T lymphocytes, characterized by their invariant T cell receptor (TCR) α chain and their requirement for the nonpolymorphic class Ib (MHC) molecule, MR1. MAIT cells are extremely abundant in human blood and mucosae. Contrary to mainstream T cells, their development requires B cells and commensal microbial flora. To shed light on the little-understood MAIT cells, we used new tools, including an antibody that we recently developed to detect human MAIT cells, and we were able to show that MAIT cell development is a stepwise process, with an intra-thymic selection followed by peripheral expansion. We show that thymic selection is MR1 dependent but requires neither B cells nor the commensal flora, which are both necessary for the expansion in the periphery. In contrast with the other evolutionarily conserved invariant subset, the natural killer T (NKT) cells, we found that MAIT cells exit the thymus as “naïve” cells before becoming antigen-experienced memory cells and expanding in number to represent a significant 1%–4% of peripheral T cells in human blood. In mice, we found that MAIT cells remain naïve and do not expand substantially. We conclude that MAIT cell development follows a unique scheme, where, unlike NKT cells, MAIT cell selection and expansion are uncoupled events that are mediated by distinct cell types in different compartments.

hematopoietic cells expressing evolutionarily conserved non-polymorphic MHC class Ib molecules, encoded in humans in a MHC paralogous region on Chromosome 1: CD1d for NKT cells [13] and MHC-related molecule 1 (MR1) for MAIT cells [14]. NKT cells accumulate in the liver and the spleen, independently of the presence of any exogenous stimuli such as the normal bacterial flora [8], while MAIT cells accumulate primarily in the intestinal lamina propria (LP), in a process independent on the commensal flora [14]. MAIT cell function is unknown, but the unusual features of these cells and their evolutionary conservation suggest an important role at the interface between innate and adaptive immunity, probably in the intestinal immune system.

For NKT cells, the molecular basis of their specific development begins to be unraveled: contrary to mainstream T cells and $\gamma\delta$ T cells, NKT cell development requires the integrity of the SLAM/SAP/fyn pathway with the involvement of homotypic interactions of SLAM receptor family members and CD1d expression on CD4⁺/CD8⁺ (DP) thymocytes [15]. Consequently, NKT cells are absent in mice and humans deficient in the molecular adaptor SAP [16–19]. In addition, mouse and human NKT cells specifically express the ZBTB16 transcription factor very early on during their development and the absence of this factor in luxoid mice leads to a quasi-disappearance of the NKT cells as only a very few number of naïve NKT remains [20,21].

Little is currently known about MAIT cell development. They are absent from *nude* mice [22], but MAIT cells are not in sufficiently large number in the thymus for detection by highly sensitive reverse transcription-(RT)-PCR methods in either humans or wild-type (wt) mice ([22] and unpublished data). Previous studies on MAIT cell selection have been based on the measure of the number of these cells in the periphery (in the mesenteric lymph-node [MLN] and in the LP) [14]. MAIT cell development does not require expression

of their selecting element on thymus epithelial cells, but the presence of MR1 on B cells is probably necessary for accumulation of MAIT cells in the gut LP [14]. It is therefore unclear whether MR1-dependent selection of MAIT cells really occurs in the thymus, and if so, whether B cells and/or the bacterial flora are required for MAIT cell development in the thymus or peripheral accumulation in the gut.

Herein, we investigated MAIT cell development in both humans and mice. In humans, we used an anti-V α 7.2 monoclonal antibody (mAb) generated in our laboratory to track normal unmanipulated MAIT cells. MAIT cells are rare and display a naïve phenotype both in human thymus and cord blood, while they are abundant and show a homogeneous memory/effector-like phenotype in the blood of all healthy subjects tested. In mice, the over-expression of one of the TCR chains was sufficient to increase the frequency of MAIT cells in central and peripheral lymphoid organs in an MR1-dependent manner. Fetal thymic organ culture (FTOC) and phenotypic studies of the thymus in these mice demonstrated that MAIT cells are selected in the thymus in the absence of B cells and bacterial products. However, most mouse MAIT cells remained naïve in the periphery. The complementary data obtained from humans and mice indicate that MAIT cells are exported from the thymus as naïve cells and subsequently become memory and expand, following interactions with B cells and the commensal flora, in an SAP-independent manner. Thus, MAIT cells use a developmental pathway distinct from both known unconventional T cell subsets and mainstream T cells, showing that they represent a unique subset with its own features.

Results

Frequency and Phenotype of V α 7.2 Expressing T Cells in Human Blood

As MAIT cells are defined by the use of an invariant iV α 7.2-J α 33 TCR α chain, we developed a monoclonal antibody (3C10) recognizing the TCR α V α 7.2 segment by immunizing Balb/c mice with a recombinant V α 7.2-J α 33/V β 13 recombinant protein (see Methods). We then used this antibody to measure the number of cells expressing the V α 7.2 segment in blood T cells from healthy donors by assessing the proportion and phenotype of 3C10⁺ cells in the CD4, CD8 β and DN subsets of CD3⁺/TCR $\gamma\delta$ ^{neg} lymphocytes (Figure 1A). Most 3C10⁺ DN (which also includes CD8 $\alpha\alpha$ cells) T cells were also found to display strong expression of the CD161 (NKR1A) marker, and the percentage of 3C10⁺/CD161^{hi} T cells in the DN + CD8 $\alpha\alpha$ subset ($40.3 \pm 21\%$, $m \pm SD$; range = 1–98%) was very high. In CD8 β T cells, the proportion of 3C10⁺/CD161^{hi} cells was variable but significant ($7.8 \pm 5.5\%$; 0.2–26.3), while within CD4 T cells, the proportion of 3C10⁺/CD161^{hi} cells was low ($0.34 \pm 0.34\%$; 0–1.4), with only a minority of 3C10⁺ T cells also expressing CD161. Reverse transcription (RT)-PCR and polyclonal sequencing of V α 7.2-C α amplicons obtained from the different FACS-sorted subsets showed that the canonical iV α 7.2-J α 33 sequence segregated with the 3C10⁺/CD161^{hi} cells (Figure S1 and unpublished data). The presence of 3C10⁺/CD161^{neg} CD4 and CD8 β T cells with no canonical sequence expression demonstrates that 3C10 monoclonal antibody (mAb) is not a clonotypic antibody, but is instead specific for the V α 7 segments, which can be used by mainstream T cells. We were

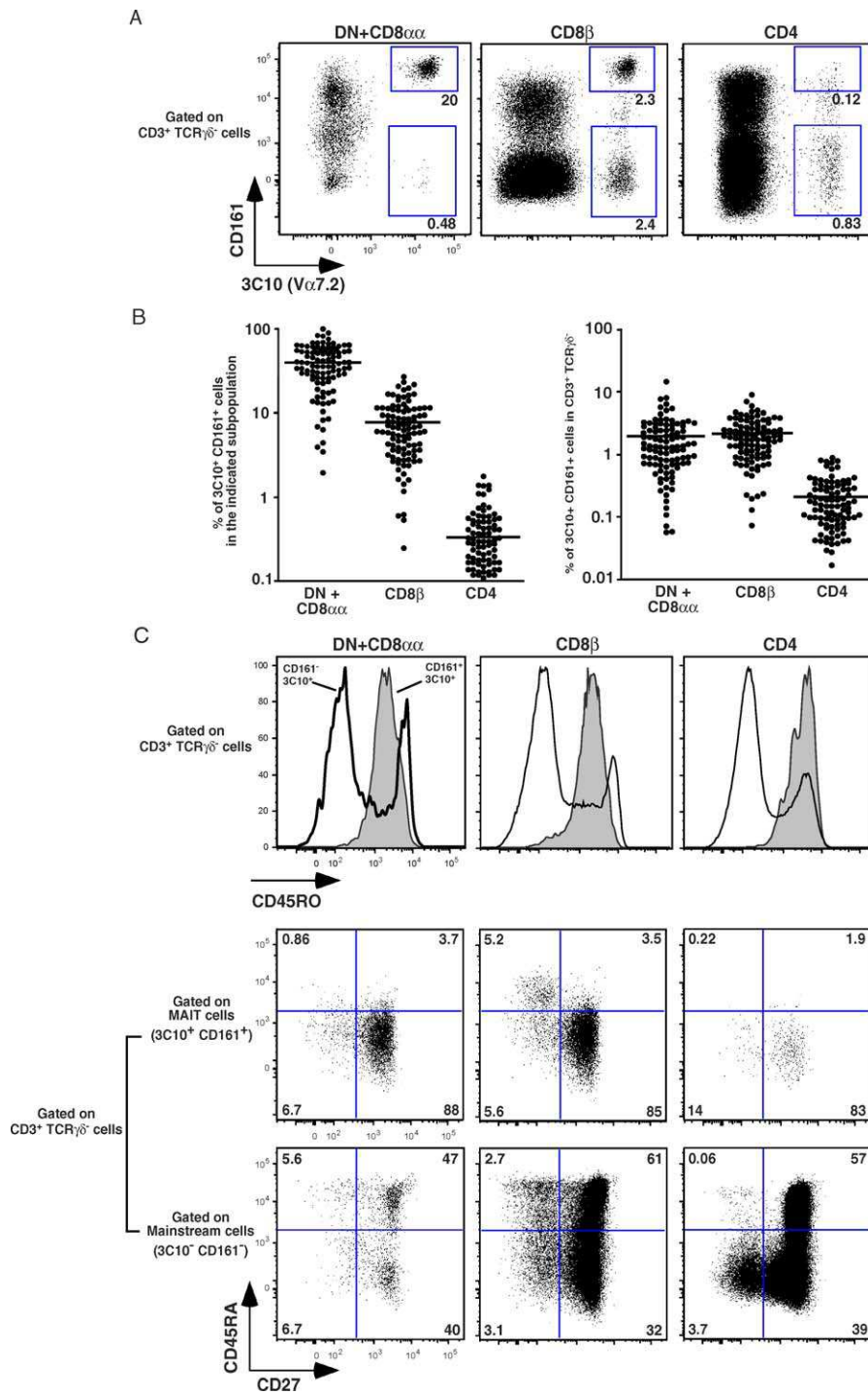


Figure 1. Frequency and Phenotype of V α 7.2 Expressing T Cells in Human Blood

(A) Representative 3C10 and CD161 staining gated on $\alpha\beta$ TCR T cells in DN (+CD8 $\alpha\alpha$), CD8 β , and CD4 populations. Percentages of 3C10⁺CD161⁺ and 3C10⁺CD161⁻ are boxed.

(B) Percentage of 3C10⁺CD161⁺ cells in indicated DN, CD8 β , and CD4 populations (left panel); percentage of DN, CD8 β , and CD4 3C10⁺CD161⁺ cells present in the $\alpha\beta$ TCR T cells (right panel) both estimated by FACS analysis on 104 healthy blood samples. Each dot represents a donor.

(C) Representative FACS staining of 3C10⁺CD161⁺ and 3C10⁺CD161⁻ cells in DN, CD8 β , and CD4 populations (left, center, and right panels, respectively): expression of CD45RO gated on $\alpha\beta$ TCR T cells (upper panels) and expression of CD27 versus CD45RA gated on MAIT cells (middle panels) and mainstream T cells (lower panels).

doi:10.1371/journal.pbio.1000054.g001

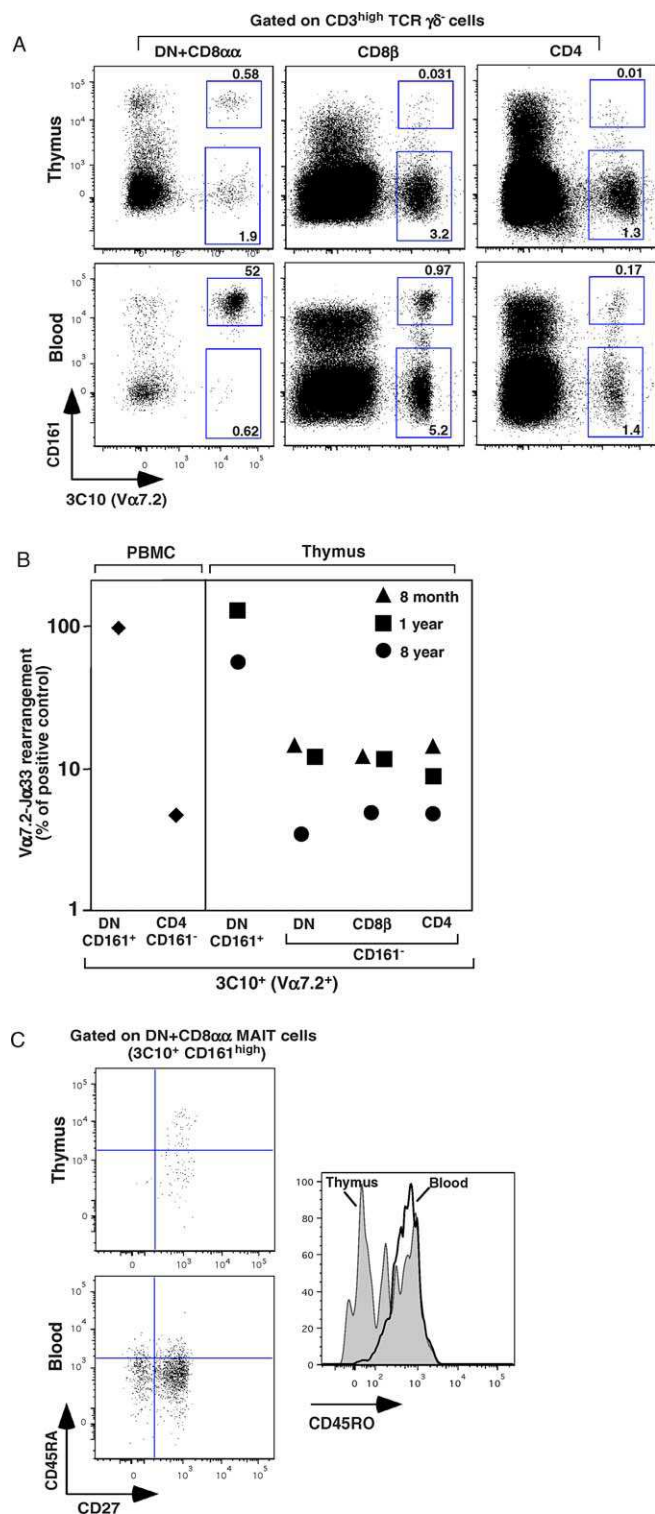


Figure 2. MAIT Cells Are Present in Human Thymus

(A) Representative 3C10 and CD161 staining gated on mature $CD3^{hi}$ T cells in DN, CD8 β , and CD4 populations in the thymus of a 5-y-old patient, upper panel. The corresponding blood analysis is shown in the lower panel. Percentages are indicated in the quadrants.

(B) Quantitative PCR analysis of $iV\alpha 7.2$ -J $\alpha 33$ segment expression normalized to $C\alpha$ gene expression, on sorted $3C10^{+}CD161^{+}$ DN and $3C10^{+}CD161^{-}$ DN, CD8 β , or CD4 populations in the thymus of three different patients (aged 8 months, 1 y, and 8 y). $3C10^{+}CD161^{+}$ DN and $3C10^{+}CD161^{-}$ CD4 fractions from PBMC were used as positive and negative controls respectively (left panel). The 100% value was defined as that obtained with the $3C10^{+}CD161^{+}$ DN sample from the PBMC,

which contains 100 % MAIT cells, whereas the background was defined as the value for $3C10^{+}CD161^{-}$ CD4 cells, which have no canonical sequence. The values for the different samples were normalized with respect to these controls.

(C) Representative staining of CD27 versus CD45RA gated on DN MAIT cells in thymus and PBMC (upper and lower left panels, respectively). CD45RO expression by MAIT cells (histogram) in thymus and PBMCs. Representative of three independent experiments. doi:10.1371/journal.pbio.1000054.g002

surprised to observe that a significant proportion of $CD8\alpha^{+}/3C10^{+}/CD161^{+}$ T cells also expressed the CD8 β molecule, in conflict with our previous findings [22]. However, a careful analysis showed that the MFI for CD8 β in $3C10^{+}/CD161^{hi}$ T cells was only one-quarter to one-sixth that in $3C10^{-}/CD161^{-}$ T cells (Figure S2), suggesting that we missed this subset of cells in our previous FACS-sorting experiments. Interestingly, no such difference in MFI was seen for CD8 α (Figure S2), suggesting that at least some of the $CD8\alpha\beta^{+}/3C10^{+}/CD161^{+}$ MAIT cells also express the CD8 $\alpha\alpha$ molecule. These results show that MAIT cells can be identified as $3C10^{+}/CD161^{hi}$ T cells, and confirm that they are abundant within the DN and CD8 $\alpha\alpha^{+}$ subsets, and scarce in the CD4 $^{+}$ T cell subset. However, a large number of these cells may also express an intermediate level of CD8 $\alpha\beta$.

The high numbers of DN+CD8 $\alpha\alpha$ and CD8 β MAIT cells were similar in 104 blood donors, whereas the CD4 subset contained only one-tenth as many such cells (Figure 1B). In adult blood, these cells displayed a homogenous $CD45RA^{neg}/RO^{+}/27^{+}/62L^{lo}/CCR7^{-}/CXCR6^{+}$ phenotype (Figure 1C and unpublished data) suggesting that blood MAIT cells are memory cells that can migrate into the intestinal tissues.

MAIT Cells Are Present in the Human Thymus

We used the aforementioned staining strategy to assess the presence of MAIT cells in the human thymus, and observed some $3C10^{+}$ DN or single-positive CD8 β and CD4 T cells (Figure 2A, upper panels). However, by contrast to what was observed with blood (Figure 2A, lower panels), most of the $3C10^{+}$ cells in the thymus did not express CD161. To assess the identity of these cells, we quantified $V\alpha 7.2$ -J $\alpha 33$ amplicons in sorted CD161-positive and CD161-negative DN, CD4 and CD8 β $3C10^{+}$ thymocytes, using $CD161^{neg}/CD4^{+}$ and $CD161^{+}/DN$ blood $3C10^{+}$ T cells as negative and positive controls, respectively. In two of the three thymuses studied we found a small excess of J $\alpha 33$ usage (8%–12%) in the $CD161^{neg}$ $3C10^{+}$ thymocytes (Figure 2B). By contrast, J $\alpha 33$ was used by 50% to 100 % of the few $3C10^{+}/CD161^{hi}$ DN thymocytes in the two thymuses containing $3C10^{+}/CD161^{hi}$ T cells. Almost half of this small number of $3C10^{+}/CD161^{hi}$ cells had a naïve ($CD45RO^{lo}$, $CD45RA^{+}$, $CD27^{+}$) phenotype (Figure 2C) ruling out the possibility of blood contamination or recirculating cells. The presence of a few naïve T cells expressing the canonical $iV\alpha 7.2$ -J $\alpha 33$ TCR α chain in the thymus suggests that MAIT cells develop within the human thymus, although this remains to be definitively demonstrated. We therefore used mouse models for the further characterization of MAIT cell ontogeny.

MAIT Cells Ontogeny in Mice Transgenic for the $iV\alpha 19$ TCR α , MAIT Cell $V\beta 6$ TCR β Chains or Both

Mice have very few MAIT cells and the lack of an antibody specific for the invariant $mV\alpha 19$ TCR α chain precludes the direct analysis of MAIT cells *in vivo* or *ex vivo*. We therefore generated mice expressing an invariant $mV\alpha 19$ -J $\alpha 33$ TCR α

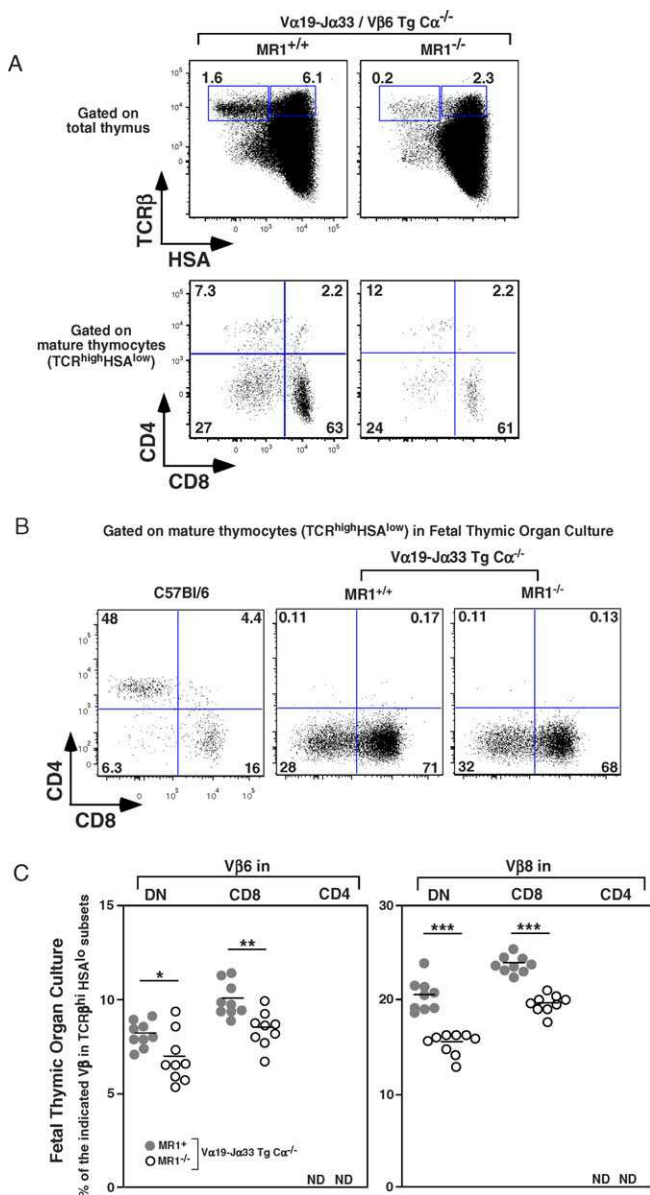


Figure 3. Intra-Thymic Development of MAIT Cells in Mice

(A) Representative HSA and TCR β staining (upper panel) and CD8 and CD4 staining gated on mature thymocytes (lower panel) in $iV\alpha 19$ -J $\alpha 33$ /V $\beta 6$ transgenic mice in a $MR1^{+/+} C\alpha^{-/-}$ or $MR1^{-/-} C\alpha^{-/-}$ background (left and right panel, respectively). Percentages of mature T cells ($TCR^{\text{hi}}HSA^{\text{lo}}$) and intermediate T cells ($TCR^{\text{hi}}HSA^{\text{hi}}$) are boxed, (upper panel). Representative of six mice in each group.

(B) Representative CD8 and CD4 staining gated on mature T cells in C57Bl/6 and $iV\alpha 19$ -J $\alpha 33$ transgenic mice in a $MR1^{+/+}$ or $MR1^{-/-} C\alpha^{-/-}$ background in FTOC.

(C) Frequency of V $\beta 6$ and V $\beta 8$ expression in mature T cells ($TCR^{\text{hi}}HSA^{\text{lo}}$) in DN, CD8, and CD4 subsets from FTOC of $iV\alpha 19$ -J $\alpha 33$ transgenic $C\alpha^{-/-}$ mice in the presence (gray circle) or not of (white circle) $MR1$ background. Each dot represents an individual fetal thymus. Representative of two independent experiments. *, $p = 0.02$; **, $p = 0.002$; ***, $p < 0.0001$; ND, not detected. doi:10.1371/journal.pbio.1000054.g003

chain transgene (Tg). A detailed analysis of these mice and their phenotype are provided as supporting information (see Figure S3A and Text S1). As also shown by others [23], the transgenic over-expression of the invariant TCR α chain induces a clear $MR1$ -dependent bias in V β chain segment usage towards V $\beta 6$ and V $\beta 8$, reproducing the MAIT cell

repertoire of our $iV\alpha 19$ T-T hybridoma [22]. Comparison of V $\beta 6$ /V $\beta 8$ bias in the presence or absence of $MR1$ provided us with an estimate of T cell selection by $MR1$: at least 50% of the T cells in these mice are $MR1$ restricted (see Figure S3B, S3C, and Text S1). As shown by others [23] and in the Supporting Information (Figure S3C) $MR1$ -restricted T cells are found in the thymus of $iV\alpha 19 C\alpha^{-/-}$ Tg mice as indicated by a $MR1$ dependent V $\beta 6$ and/or V $\beta 8$ bias observed in all CD4/CD8/DN T cell subsets.

The forced transgenic expression of a TCR α chain greatly modifies T cell ontogeny [24,25]. We therefore used an alternative strategy based on the transgenic expression of a V $\beta 6^{+}$ TCR β chain from one of the $iV\alpha 19$ T-T hybridoma. As shown previously for mainstream T cells [26] and NKT cells [27], the frequency of the $iV\alpha 19$ -J $\alpha 33$ TCR α chain was increased in these mice in a $MR1$ -dependent manner (see Figure S3D and Text S1).

To further increase the proportion of MAIT cells and to decrease the unwanted TCR specificities due to the endogenous TCR β chains, we crossed the TCR α Tg and TCR β Tg mice together in the presence or absence of $MR1$. The thymuses of the resulting mice were a little smaller than those of wt, in both backgrounds (53 mean [M] ± 26 , \pm standard deviation [SD], $n = 15$). In the presence of $MR1$, the mature thymocytes ($TCR^{\text{hi}}/HSA^{\text{lo}}$) were in low numbers in comparison with B6 mice and were mostly DN and CD8 with a concomitant reduction in the CD4 T cell subset (Figure 3A). In the absence of $MR1$, the frequency and number of mature ($TCR^{\text{hi}}/HSA^{\text{lo}}$) thymocytes decreased by a factor of six to eight, indicating that $MR1$ -restricted MAIT cells are present in the thymus of the $MR1^{+}$ TCR $\alpha\beta$ double Tg mice. Importantly, peripheral T cells from these mice strongly up-regulated CD69 expression when cocultured with murine $MR1$ -transfected fibroblasts, confirming that these cells are indeed reactive towards $MR1$ (S. Huang, EM, S. Kim, L. Yu, CS, et al., unpublished data).

MAIT Cells Are Found in FTOC

In all the mice studied above, the mature thymocytes were in very small numbers and could be recirculating T cells generated elsewhere. We therefore studied FTOC from $iV\alpha 19$ Tg $C\alpha^{-/-}$ mice in the presence or not of $MR1$ to demonstrate formally the intra-thymic development of MAIT cells. Negligible numbers of CD4 T cells were generated whereas the proportion of CD8 and DN T cells was very high among the mature ($TCR^{\text{hi}}/HSA^{\text{lo}}$) thymocytes (Figure 3B), similarly to the phenotype found in the adult thymus of mice of the same genetic background although the number of DN cells was lower in adult thymus (Figure S4). Both DN and CD8 T cells displayed a V $\beta 6$ and V $\beta 8$ bias that was dependent on $MR1$ expression as shown by the significant decrease in V $\beta 6$ ($p < 0.023$ and 0.002 for DN and CD8, respectively) and V $\beta 8$ ($p < 0.0001$) expression in the absence of $MR1$ (Figure 3C). This $MR1$ dependent V $\beta 6/8$ usage bias indicates a $MR1$ dependent selection of many T cells in these FTOC of $iV\alpha 19$ Tg mice. Altogether, these experiments formally demonstrate the existence of an intra-thymic development pathway for MAIT cells.

Monoclonal $MR1$ -Dependent MAIT Cells Are Found in the Thymus in the Absence of B Cells

We have previously shown that accumulation of MAIT cells in the periphery depends on the presence of B cells [14]. In

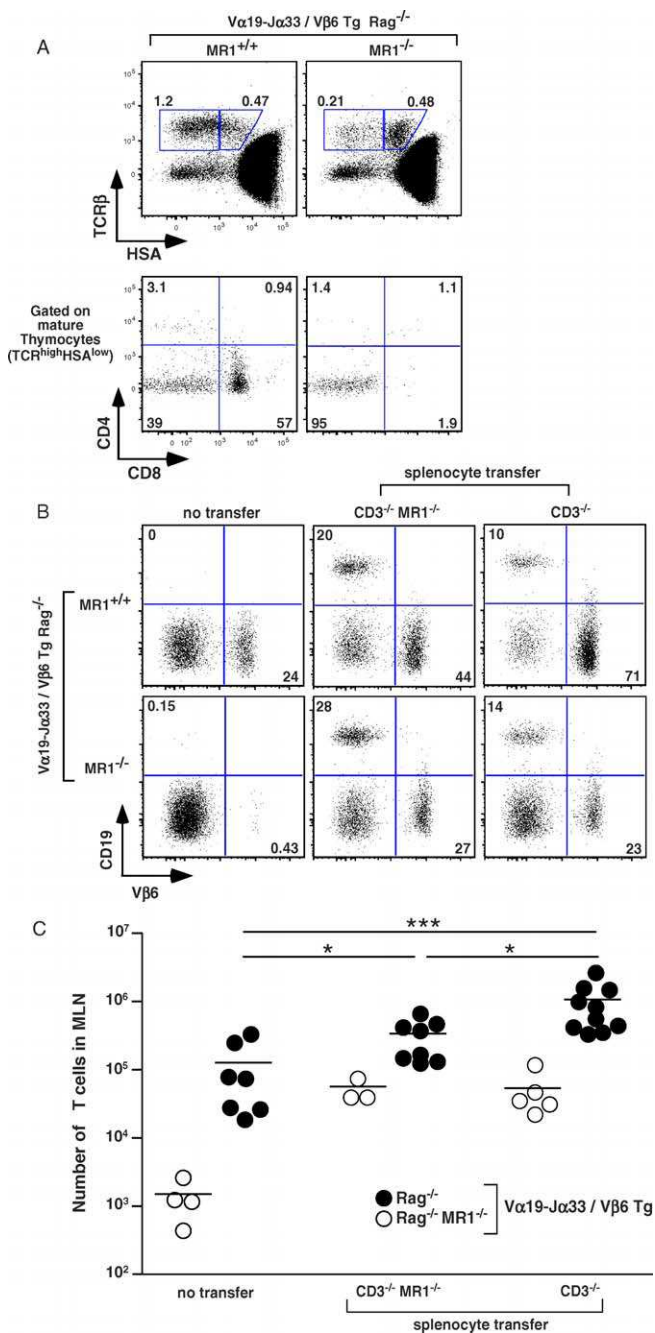


Figure 4. B Cells Are Not Required for Intra-Thymic MAIT Cell Development although B Cells Induce Peripheral Expansion of MAIT Cells (A) Representative HSA and TCR β staining (upper panel) and CD8 and CD4 staining gated on mature thymocytes (lower panel) in $iV\alpha 19$ - $J\alpha 33$ / $V\beta 6$ transgenic mice in a $MR1^{+/+}$ or $MR1^{-/-}$ $Rag^{-/-}$ background (left and right panel, respectively). Percentages of mature and intermediate T cells are boxed (upper panel). Representative of four mice in each group. (B) Representative $V\beta 6$ and CD19 staining gated on MLN lymphocytes from $iV\alpha 19$ / $V\beta 6$ double transgenic $Rag^{-/-}$ mice on a $MR1^{+/+}$ (upper panels) or $MR1^{-/-}$ (lower panels) background without (left panels) or 14 d after $MR1^{-/-}$ or $MR1^{+/+}$ $CD3\epsilon^{-/-}$ splenocyte transfer. Representative of three to ten mice per group. (C) Absolute numbers of T lymphocytes in the MLN of the different groups analyzed: $MR1^{+/+}$ (filled circles) and $MR1^{-/-}$ (open circles) $iV\alpha 19$ / $V\beta 6$ double Tg $Rag^{-/-}$ mice, without or after $MR1^{-/-}$ or $MR1^{+/+}$ $CD3\epsilon^{-/-}$ splenocyte transfer. * $p < 0.021$; *** $p = 0.0007$. doi:10.1371/journal.pbio.1000054.g004

contrast with the presence of around 1% B cells in adult thymus, no CD19⁺ cells were detected in the FTOC (unpublished data), suggesting that B cells may not be necessary for thymic MAIT cell selection. To further address the role of B cells in MAIT cell ontogeny, we crossed the $iV\alpha 19$ TCR α and $V\beta 6$ TCR β Tg lines onto a $RAG^{-/-}$ background, thereby generating mice producing monoclonal MAIT cells in the absence of B cells. In the presence of $MR1$, the thymus was extremely small ($4\text{--}6 \times 10^5$ cells) with very few mature (TCR β^{hi} /HSA $^{\text{lo}}$) cells (Figure 4A, left upper panel), which were either DN or CD8, and only a minimal number of CD4 T cells (Figure 4A, left lower panel). As T cells do not develop at all in the absence of the restricting MHC molecule in mice transgenic for classical TCRs [28,29], this result is compatible with $MR1$ expression on cells other than B cells. In accordance with this hypothesis, $RAG^{-/-}$ TCR $\alpha\beta$ double TCR transgenic mice harbored no mature thymocytes in the absence of $MR1$ (Figure 4A, right upper and lower panels). Thus, MAIT cells can develop intra-thymically in a $MR1$ -dependent but B cell-independent fashion.

B Cells Induce Peripheral Expansion of Monoclonal MAIT Cells in Transgenic Mice

The periphery of $MR1^{-/-}$ $RAG^{-/-}$ TCR $\alpha\beta$ double Tg mice was almost completely devoid of mature T cells ($1.5 \pm 0.5 \times 10^3$, $m \pm$ standard error [SE], $n = 4$) (Figure 4B, upper left panel, and 4C), whereas in the presence of $MR1$ only a small subset of T cells was found in the MLN ($1.3 \pm 0.5 \times 10^5$, $n = 7$), blood or spleen (Figure 4B upper right panel, 4C, and unpublished data). This suggests that in the absence of B cells, selected MAIT cells are not able to expand and accumulate in the periphery. To directly assess this issue, we performed the following “add-back” experiment: we injected splenocytes devoid of T cells from $MR1^{+/+}$ or $MR1^{-/-}$ $CD3\epsilon^{-/-}$ mice intravenously into $MR1^{+/+}$ or $MR1^{-/-}$ $RAG^{-/-}$ TCR $\alpha\beta$ double Tg mice, and counted the T cells in the MLN after 2 wk. As shown in Figure 4B (lower panel), the splenocytes transfer allowed the same level of reconstitution of B cells in both $MR1^{+/+}$ and $MR1^{-/-}$ background. The transfer of either $MR1^{-/-}$ or $MR1^{+/+}$ B cells into $MR1$ deficient hosts allowed a clear expansion of the T cells, which however remains in low numbers ($5.5 \pm 1.3 \times 10^4$, $n = 3$ and $5.4 \pm 1.8 \times 10^4$, $n = 5$, respectively) (Figure 4B, lower middle and right panels, and Figure 4C). This expansion, which was similar with $MR1^{-/-}$ and $MR1^{+/+}$ B cells, could either be related to some trophic effect of the B cells or to the modifications of the lymphoid organs they induced. By contrast, when $MR1^{+/+}$ B cells were transferred into $MR1^{+/+}$ $RAG^{-/-}$ $\alpha\beta$ TCR double Tg mice, we found much higher number of T cells ($1 \pm 0.26 \times 10^6$, $n = 10$) in the periphery (Fig 4B, 4C, and unpublished data). However, $MR1$ deficient B cell transfer also induced some T cell expansion ($3.4 \pm 0.8 \times 10^5$, $n = 8$) in the periphery of the $MR1^{+/+}$ TCR $\alpha\beta$ double Tg mice. Thus, noncognate interactions (or $MR1$ -independent cognate interactions with membrane molecules exclusively expressed by B cells) between MAIT and B cells might be sufficient to allow MAIT cell expansion. Alternatively, the $MR1^{\text{neg}}$ B cells may have captured some $MR1$ molecules from the $MR1^{+/+}$ hosts [30] as they are in a “sea” of $MR1^{+/+}$ cells. However, the much larger number (8-fold with $MR1^{+/+}$ B cells versus 2.7-fold with $MR1^{-/-}$ B cells) of MAIT cells found after the transfer of B cells into $MR1^{+/+}$ $RAG^{-/-}$ $\alpha\beta$ TCR double Tg mice suggests that cognate interactions are likely involved.

Therefore, in mice where MAIT cells are selected in the thymus but do not expand in the periphery, the adoptive transfer of MR1⁺ B cells is sufficient to promote their accumulation. Interestingly, in all cases MAIT cells acquired a memory (CD44^{hi}) phenotype after transfer of B cells (unpublished data). The acquisition of a memory phenotype might be related to a “homeostatic” expansion due to the sudden provision of selecting niches. In any cases, although it could be argued that the splenocyte mixture we injected contains both B cells and other cell types, such as dendritic cells or macrophages, the latter are already present in the host mice before transfer and are obviously not able to induce the peripheral accumulation of MAIT cells. We can therefore formally conclude that B cells are necessary to allow MAIT cells accumulation in the MLN of these monoclonal Tg mice, either through survival, expansion, and/or addressing of MAIT cells to the intestinal territory.

Human Cord Blood Contains Naïve MAIT Cells

The accumulation of murine MAIT cells in the intestinal compartment also requires the presence of the commensal flora [14]. The generation of MAIT cells in FTOC in the absence of exogenous ligand suggests that the commensal flora is necessary not for thymic selection but for the migration and/or peripheral expansion of MAIT cells. We investigated this issue in humans by studying the presence and the phenotype of MAIT cells in immunologically naïve cord blood. The number of CD161^{hi}/3C10⁺ MAIT cells was small but measurable in cord blood DN and CD8β T cells (Figure 5A). Polyclonal sequencing of sorted CD161^{hi}/3C10⁺ DN cord blood lymphocytes confirmed the presence of the canonical sequence (Figure S6). Strikingly, unlike their adult counterparts, these cord blood MAIT cells displayed a naïve (CD45RA^{hi}/CD27^{hi}/CD45RO^{lo}) phenotype (Figure 5B), making the possibility of a materno-fetal transfusion highly unlikely and demonstrating the presence of naïve MAIT cells in human cord blood. Altogether, these results suggest that MAIT cells acquire CD161 expression right before (or concomitantly to) their exit from the thymus, and remain naïve until birth. Colonization with commensal bacteria after birth induces the expansion and/or final maturation of MAIT cells in the periphery.

Mouse MAIT Cells Display a Naïve Phenotype

We next addressed the question of the naïve/memory status of mouse MAIT cells, which are in much lower number than human MAIT cells. Indeed, in the different Tg mice studied above, the DN and CD8 mature thymocytes are mostly naïve (CD44^{lo}/CD122^{lo}), while the low numbers of CD4 T cells are constantly CD44^{hi} (Figure S7). As shown and discussed in Figure S5, some of the Vβ6⁺ CD4 T cells found in iVα19 Tg mice are not MR1 restricted but classical MHC class II dependent. To avoid this confounding variable and to increase the proportion of MR1 restricted T cells, we crossed our Tg mice to TAP^{-/-}Ii^{-/-} double KO mice, which, being devoid of classical MHC molecules, would select lower number of mainstream T cells. In the absence of classical MHC molecule (Cα^{-/-}TAP^{-/-}Ii^{-/-}), the MLN T cells found in the iVα19/Vβ6 double Tg mice displayed a naïve (CD44^{lo}) (Figure 5B) and CD122^{lo} (unpublished data) phenotype. In the absence of MR1, the proportion and the number of CD8 T cells greatly decreased (Figures 5C and S8A) and some

increase in CD44 expression was observed with a concomitant increased usage of endogenous Vβ segments (Figure S8B). These results suggest that, in the absence of MR1, pairing of the iVα19 TCRα chain with endogenous TCRβ chains allows selection and peripheral expansion. The proportion and the phenotype of the few CD4 T cells found in these mice remained unchanged in MR1⁺ or MR1⁻ mice indicating that many of these cells were not MR1 dependent.

To further address the question of the naïve/memory phenotype of MAIT cells, we sorted CD44^{hi} and CD44^{lo/int} T cell subsets from the MLN of TAP^{-/-}Ii^{-/-} (to enrich in MAIT cells) and Vβ6 Tg mice on a MR1⁺ or MR1⁻ background and quantified the amount of iVα19 transcripts. In both strain of mice, we found that the iVα19 transcripts largely segregated in the CD44^{lo/int} fraction, confirming that wt polyclonal MAIT cells indeed display a naïve phenotype in mice (Figure 5D).

Altogether, these results indicate that murine MAIT cells, like their human counterparts, are selected by MR1 in the thymus without acquiring a memory phenotype. However, they remain naïve in the periphery, even in the presence of B cells and the commensal flora. The difference in number and phenotype of MAIT cells between humans and mice might then be related to the absence of peripheral expansion in the latter.

Molecular Basis of the Distinct Requirement for MAIT Cells and NKT Cells Development

Contrary to mainstream T cells, NKT cells express the ZBTB16 transcription factor from the first stage of their differentiation in the thymus. In mice deficient for this transcription factor, NKT cells remain naïve, do not expand, and do not colonize the effector organs such as the liver but are found in small numbers in the LN [20,21]. The transgenic forced expression of ZBTB16 controlled by a CD4 promoter induces an effector phenotype in conventional CD4 T cells, indicating that ZBTB16 expression is probably the result of the productive interaction of the iVα14 TCR with CD1d and is responsible for the effector/memory phenotype of NKT cells. The only T cell subset expressing the ZBTB16 transcription factor in addition to the NKT cells was the human MAIT cells [21]. However, we found that mouse MAIT cells did not express ZBTB16 in the periphery (Figure 6A), in accordance with their naïve phenotype. Thus, in contrast with NKT cells, which express ZBTB16 at the early stages of their thymic selection/expansion, ZBTB16 expression in MAIT cells is not related to their selection process. The expression of this transcription factor in MAIT cells is probably linked to an activation step followed by the acquisition of a memory phenotype and peripheral expansion.

Although both NKT cells and MAIT cells are selected on hematopoietic cells, the former subset expands and acquires a memory phenotype within the thymus, whereas MAIT cells seemingly show a more conventional selection process. We sought to investigate the molecular basis for this divergence by studying the SAP-dependency of MAIT cells development. Indeed, CD1d-restricted NKT cells ontogeny involves signaling through the SAP/Fyn/NF-κB signaling pathway, which is triggered by homotypic interactions between SLAM family molecules expressed both on developing NKT cells and selecting cortical thymocytes [15]. We therefore measured the number of MAIT cells in five SAP-deficient patients: whereas

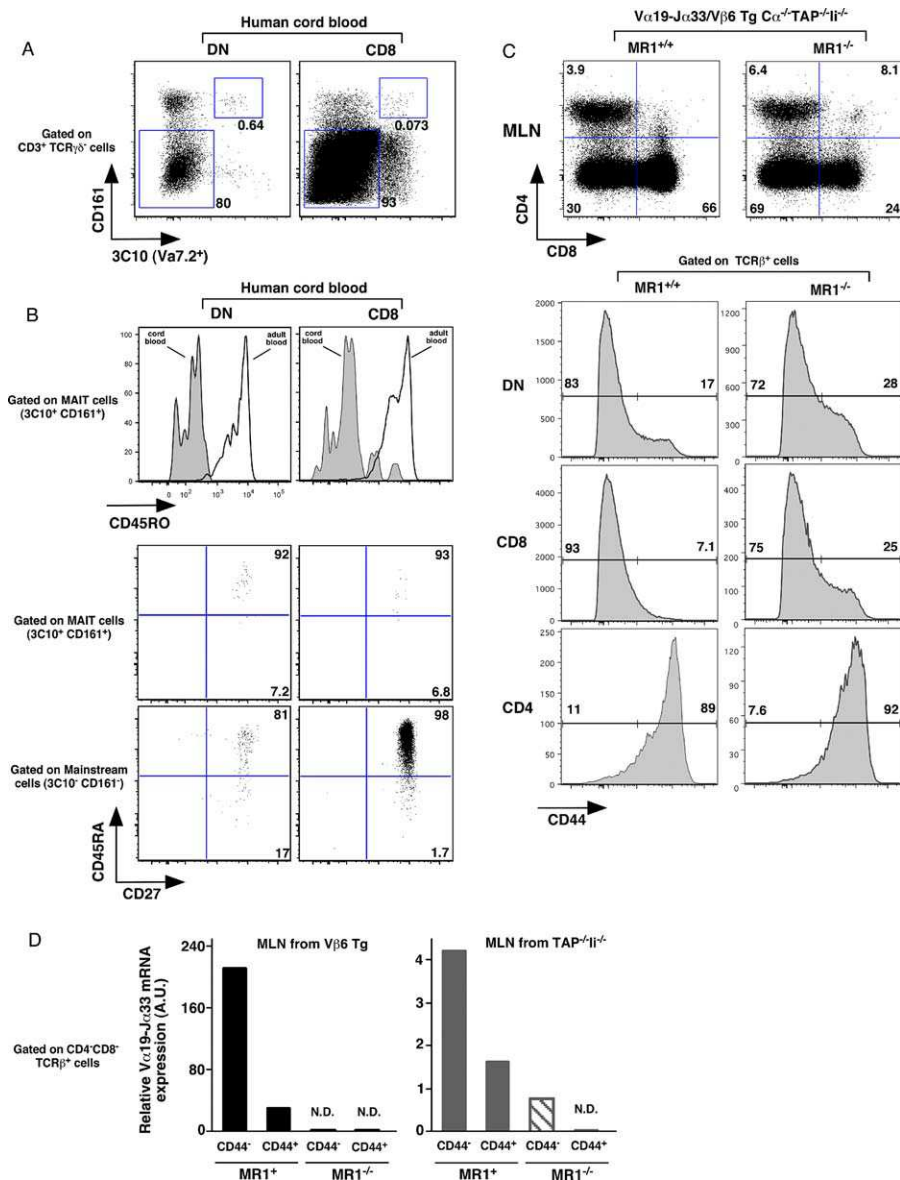


Figure 5. MAIT Cells from Human Cord Blood and Mouse MAIT Cells Display a Naïve Phenotype

(A) Representative 3C10 and CD161 staining gated on $\alpha\beta$ TCR T cells in DN (+CD8 $\alpha\alpha$) and CD8 β populations in human cord blood (left and right panel, respectively). The percentages of MAIT cells (3C10⁺CD161⁺) and mainstream T cells (3C10⁻CD161⁻) are boxed.

(B) Representative CD45RO expression on DN and CD8 β MAIT cells (left and right panels, respectively) in human cord blood and adult blood (upper panel). Expression of CD27 versus CD45RA is gated on MAIT cells (middle panel) or on mainstream T cells (lower panel).

(C) Representative CD8 and CD4 staining of MLN from $iV\alpha 19/V\beta 6$ double transgenic $C\alpha^{-/-}/TAP^{-/-}/Ii^{-/-}$ either on MR1^{+/+} (left panels) or MR1^{-/-} (right panels) in upper panel; lower panel expression of CD44 gated on DN, CD8, and CD4 $\alpha\beta$ TCR T.

(D) Quantitative PCR analysis of $iV\alpha 7.2-J\alpha 33$ segment expression normalized to $C\alpha$ gene expression on sorted CD44^{int} and CD44^{hi} DN cells from the MLN of V $\beta 6$ transgenic mice (left panel) and of $TAP^{-/-}/Ii^{-/-}$ mice (right panel) on MR1^{+/+} or MR1^{-/-} background as noted.

doi:10.1371/journal.pbio.1000054.g005

no V α 24 NKT cells could be found in these patients, as previously described [16–18,31], MAIT cells were present in normal numbers (Figure 6B and 6C), indicating a probable lack of involvement of the SLAM/SAP/Fyn pathway in MAIT cell development. Interestingly, ZBTB16 was normally expressed by MAIT cells from SAP-deficient patients, confirming that the SLAM/SAP/Fyn pathway is not involved in the induction of this transcription factor expression (Figure 6D). Thus, MAIT cell development clearly diverges from CD1d-restricted NKT cells, despite their common selection on hematopoietic cells [14].

Discussion

MAIT cells constitute a new subset of MHC class Ib-restricted T lymphocytes conserved among mammals. In this study, we provide for the first time, to our knowledge, phenotypic data on human MAIT cells. We show that they can be tracked by costaining with an anti-V α 7 antibody (3C10) and CD161, allowing us to assess their frequency in the peripheral blood of healthy subjects. Blood MAIT cells are numerous (at least one order of magnitude higher than NKT cells), in accordance with our previous estimates [22]. As previously published, a majority of MAIT cells display a

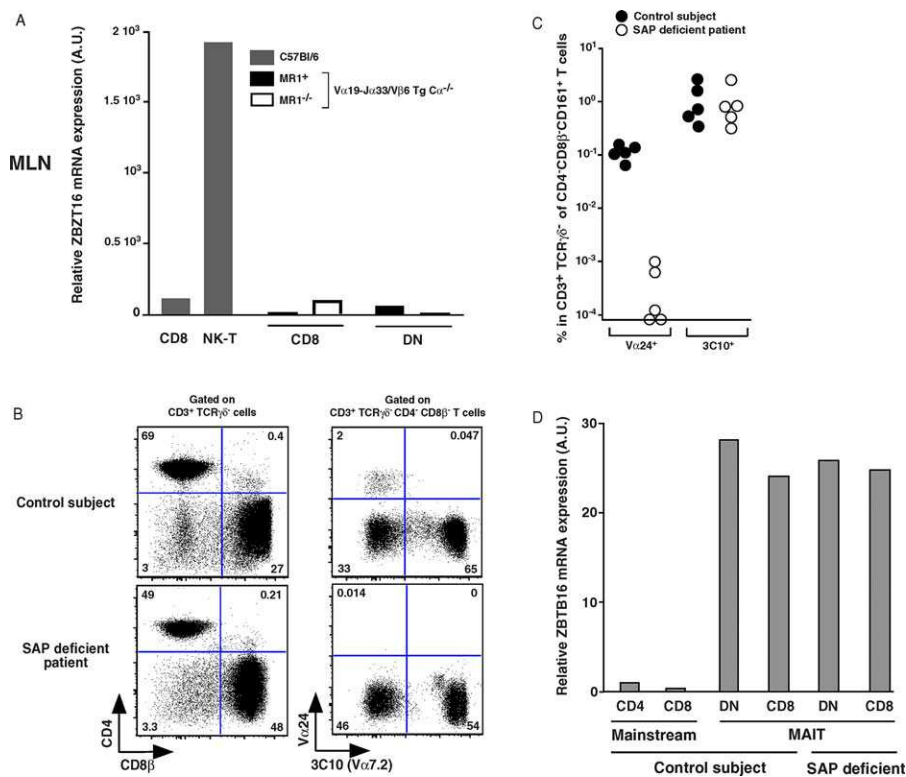


Figure 6. The *zbtb16* Transcription Factor Is Absent in Murine MAIT Cells but Expressed in MAIT Cells from Control Subjects and SAP Deficient Patients (A) Quantitative PCR analysis of *zbtb16* expression normalized to GAPDH gene expression on sorted CD8 and NKT cells from C57Bl/6 mice (left and grey) and from sorted CD8 and DN cells from *iVα19-Jα33/Vβ6* transgenic mice in a *MR1^{+/+}Cα^{-/-}* or *MR1^{-/-}Cα^{-/-}* background (right and black and white). (B) Representative CD8β and CD4 staining on gated αβTCR T cells (left panels); 3C10 and CD161 staining gated on DN+CD8αα αβTCR T cells (right panels) from a SAP deficient patient (lower panels) and a control subject (upper panels). (C) Percentage of specific NKT cells (Vα24) and MAIT (3C10) cells in control subjects and SAP deficient patients gated on DNCD161⁺CD3⁺TCRγδ⁻ T cells; each dot represents an individual. (D) Quantitative PCR analysis of *zbtb16* expression normalized to GAPDH gene expression on sorted mainstream CD4 and CD8 T cells and DN and CD8 MAIT specific cells from control subject and from sorted DN and CD8 MAIT specific cells from SAP deficient patient. doi:10.1371/journal.pbio.1000054.g006

CD4⁻CD8⁻ (DN) or CD8αα phenotype, but few of them are CD4⁺. We now show that MAIT cells can express intermediate levels of CD8αβ, which were missed in our first characterization. The low level of CD8αβ expression may allow developing CD8αβ⁺ MAIT cells to escape negative selection. These data imply that selection of MAIT cells is independent of coreceptors, but that an Ag-driven process induces differential expansion of the different subsets, as also suggested by the differences in Vβ usage between DN/CD8 and CD4 T cells in the MLN and LP of *iVα19* TCRα Tg mice.

Two other groups have generated *iVα19* TCRα Tg mice [23,32,33]: in only one of these studies [23], the comparison was made between *MR1⁺* and *MR1*-deficient backgrounds allowing the distinction between selection-driven features and those related to the transgenic artifact. Our results are similar in terms of organ cellularity, CD4/CD8/DN subset distribution, and Vβ6/8 bias. The careful study of the phenotype of our mice in the different background allowed us to show that MAIT cells are DN and CD8 and not much CD4. We also observed no significant expression of NK1.1, CD25, CD69, or ICOS on the T cells of *iVα19* or Vβ6 single or double Tg mice (unpublished data). Moreover, we studied the phenotype of wt murine MAIT cells and found that NK1.1 is expressed on <30%–50% of MAIT cells from the LP of wt C57Bl/6 mice (unpublished data). Most significantly, unmani-

pulated human MAIT cells express none of these markers, given that CD161 (NKR-P1A) is not the human ortholog of NK1.1 (NKR-P1B/C in B6 mice). The differences observed between our mice and those studied in previous investigations are probably due to experimental procedures, such as differences in the transgenic vectors used or to differences in the commensal flora of different animal facilities as MAIT cells require commensal flora to expand [14]. In any case, we believe that these markers, including NK1.1 in particular, cannot be used to reliably track MAIT cells in vivo.

We have previously shown that MAIT cells accumulate in the MLN and the gut LP. However, MAIT do not accumulate in sufficient numbers in the thymus of wt mice to be detectable by sensitive reverse transcription (RT)-PCR methods, precluding the possibility to discriminate between intra-thymic selection per se and peripheral expansion. Moreover, it has been suggested recently that the development of some unconventional intra-epithelial lymphocyte (IEL) T cell populations requires a functional thymus but actually takes place in the gut mucosa [5,7], while T10/T22-restricted γδ T cells can mature and migrate in the periphery in the absence of thymic selection [11]. Herein, we demonstrate for the first time, to our knowledge, that MAIT cells are indeed selected in the thymus in an *MR1*-dependent manner, but that B cells and bacteria are not required for their initial intra-thymic

generation, whereas both are necessary in the periphery for MAIT cell expansion. Therefore, MAIT use a unique stepwise developmental pathway that is distinct from both NKT and conventional T cells.

Our data clearly demonstrate that B cells are not the selecting cells in the thymus, but are necessary for the accumulation of MAIT cells in the MLN and LP, by promoting either expansion, survival, and/or addressing to the gut compartment. We have previously shown that MAIT cells are selected on non-T hematopoietic cells [14]; therefore our data implicate most probably myeloid cells such as macrophages or dendritic cells in intra-thymic MAIT cell selection.

Recent data from Bendelac and coworkers and from our own lab show that MAIT cells and NKT cells exclusively share the expression of the transcription factor PZLF (ZBTB16) [21], emphasizing a close lineage relationship between these two distinct subsets. However, the data presented in this paper nonetheless describe profound differences during the ontogeny of these two populations. We clearly show that MAIT cell selection is not accompanied by activation (as is the case with NKT cells [34,35]), since it does not lead to local expansion and acquisition of a memory phenotype. Accordingly, ZBTB16 was not expressed by mouse MAIT cells (Figure 6A), which display a naïve phenotype while human MAIT cells acquired ZBTB16 together with a memory phenotype after birth. It has been also shown recently that the ontogeny of NKT cells is heavily dependent upon homotypic interactions between SLAM family members and the SAP signaling pathway [15]. We show here that MAIT cells development is apparently unaffected by SAP mutations in humans, and this might be related to the fact that postselection MAIT cells display a naïve phenotype in both humans (Figure 2C) and mice (Figure 5C). In agreement with the mouse data showing that SAP deficiency does not prevent the expression of the ZBTB16 molecule at the early stages of NKT ontogeny, ZBTB16 expression in MAIT cells was unaffected in SAP deficient patients.

The absence of ZBTB16 expression by mouse MAIT cells could be related to the cleanness of the animal facilities, which would not provide the ligand or inflammatory context necessary for MAIT cell expansion. Alternatively, one key genetic component may be missing in mice because of the genetic bottleneck that laboratory mouse strains have been through without selection pressure by the putative function mediated by the MAIT cells. Finally, how ZBTB16 expression is acquired in the thymus by NKT cells and in the periphery by human MAIT cells is an open question. It is probably related to the context of the interactions between the α TCR and the selecting element.

The acquisition of a memory phenotype by human MAIT cells after birth is most likely linked to the colonization of the gut (and other mucosae) with the commensal flora. We speculate that B cells provide the link between the gut bacterial flora and MAIT cells. Direct or indirect (via epithelial cells or dendritic cells [36,37]) interactions between B cells and bacteria in the gut could either induce MR1 expression and/or endow B cells with specific costimulatory properties, akin to the SLAM-mediated costimulation of developing NKT cells. However, the absence of ZBTB16 expression, and the concomitant naïve phenotype of mouse MAIT cells implicate that some other signals are required for

their full innate-like differentiation. The dependency upon bacteria of MAIT cell expansion provides another example of the strong mutualism between the commensal flora and the development of the mammalian immune system [38].

In conclusion, we show here that besides their similarities, MAIT cell ontogeny is clearly different from NKT cells. Postselection NKT thymocytes already display innate-like properties, with a high frequency and a memory phenotype, whereas postselection MAIT cells are still naïve and need contacts with both B cells and bacteria to expand, acquire a memory phenotype in human, and accumulate in the gut. In this respect, they may be compared to $V\delta 2^+$ T cells, which appear in blood as naïve but become memory soon after birth [39,40]. The striking high frequency of MAIT cells in the blood of healthy subjects suggest that they play a prominent role in various diseases, either of infectious, tumoral, or auto-immune origin.

Methods

Mice. CD3 ϵ -deficient B6 mice, C α deficient mice (N9 to C57Bl/6 [B6]) and Ii $^{-/-}$ (B6/129) mice were obtained from the CNRS CDTA central animal facility (Orléans, France). TAP $^{-/-}$ mice in a B6/129 background were obtained from the Jackson laboratory. C α $^{-/-}$, Ii $^{-/-}$, and TAP $^{-/-}$ mice were intercrossed to obtain double and triple deficient mice. MR1 $^{-/-}$ mice have been described elsewhere [14]. MR1 $^{-/-}$ mice, kindly provided by S. Gilfillan, were backcrossed for more than ten generations onto B6 mice. They were also crossed to TAP $^{-/-}$ /Ii $^{-/-}$ mice. All the TAP $^{-/-}$ /Ii $^{-/-}$ mice had a mixed B6/129 background. iV α 19-J α 33 and V β 6 transgenic mice were obtained as previously described [41] by cloning PCR products obtained from a V α 19/V β 6 T-T hybridoma cDNA into the TCR alpha or beta shuttle vector [26]. The TCR α and TCR β constructs were injected into B6/DBA2 F1 and B6 eggs, respectively, at the CNRS transgenic facility (C. Goujet, Villejuif, France). Three iV α 19 TCR α founder lines were backcrossed for at least ten generations onto C α $^{-/-}$ B6 mice before further crossing. Most of the results were obtained with two founder lines expressing six and eight copies of the transgene. At this stage, these two founder lines were also crossed with the V β 6 TCR β Tg lines. They were also crossed with the RAG2 $^{-/-}$ CD45.1 B6 line and then with the V β 6 TCR β Tg B6 lines to obtain iV α 19/V β 6 RAG $^{-/-}$ CD45.1 B6 lines. The CD45.1 allotype marker was also introduced into one of the iV α 19 C α $^{-/-}$ B6 lines. The two TCR α Tg lines were also crossed with C α $^{-/-}$ /TAP $^{-/-}$ /Ii $^{-/-}$. The MR1-deficient allele in a B6 background was introduced into all lines. All mice were housed in our SPF colony and genotyped by PCR or FACS staining, as appropriate. Live animal experiments were done in accordance with the guidelines of the French Veterinary Department.

3C10 anti-TCR α V α 7.2 segment monoclonal antibody generation. The canonical TCR α chain and the associated V β 13 TCR β chains were cloned (ET and OL), from an iV α 7.2-J α 33 T cell clone (J.F. Davodeau, ET, M. Bonneville, and OL, unpublished data). Using this template, L. Teyton (SCRI) generated a recombinant heterodimeric protein, which was used to immunize Balb/c mice. After fusion with SP2/0, hybridoma specifically staining a high proportion of CD3 $^{+}$ DN and a proportion of CD8 α but few CD4 T cells were selected and cloned. The 3C10 hybridoma was chosen for further characterization because, according to quantitative PCR, the V α 7.2-J α 33 TCR α chain segregated with the 3C10 positive fraction in DN T cells. When transfectants expressing different mouse TCR α and TCR β chains and a chimeric human iV α 7.2-mouse C α were stained with the 3C10 supernatant, only transfectants harboring the V α 7.2 segment displayed positive staining demonstrating that 3C10 was not an anti-TCR β chain antibody (unpublished data). Quantitative PCR analysis of the 3C10 $^{+}$ and 3C10 $^{-}$ fractions using primers for all V α segments, demonstrated the absence of significant cross-reactivity between the 3C10 mAb and other V α segments (unpublished data). The 3C10 antibody was biotinylated and detected with streptavidin PE-Cy7 (BD Pharmingen).

Cell preparation. Cell suspensions were prepared from thymus, spleen, peripheral or mesenteric lymph nodes, and gut LPL as previously described [14].

Flow cytometry. Flow cytometry was performed with directly conjugated antibodies (BD Pharmingen) according to standard

techniques with analysis on FACS Aria and LSRII flow cytometers (Becton Dickinson). DAPI and a 405-nm excitation were used to exclude dead cells. The following antibodies, mostly from BD Pharmingen or eBiosciences, were used in mice: anti-CD45.2-Fitc (104), anti-CD3 ϵ -PC7 (145–2C11), anti-CD5-APC (Ly-1), anti-V β 6-PE (RR4–7), anti-CD44-PE or APC (IM-7), anti-CD45.1-PE (A20), anti- β TCR-PC5 (H57–597), anti-CD19-PE, Fitc or APC-Cy7 (1D3), anti-CD8 α -APC-Cy7 (Ly-2), and anti-CD4-PE-Texas Red (L3T4).

For human stainings, the following were used: anti-CD4-APC-Cy7 (RP4-T4), anti-CD3 ϵ -Alexa 700 (UCHT1), anti-TCR $\gamma\delta$ -PC5 (IM-MU510), anti-CD8 β -PE Texas Red (2ST8.5H7), anti-CD45RO-Fitc (UCHL1), anti-CD45RA-PE (HI100), anti-CD27-Fitc (M-T271), anti-CCR7-PE (150503), anti-CD62L-PE (Dreg 56), anti-CXCR6-PE (56811), anti-CD161-APC (DX12), and anti-CD8 α -PE Alexa700 (RPA-T8).

Human samples. Fragments of human thymuses were operating residues from children undergoing cardiac surgery. Thymuses were cut into small pieces in cold 0.5% BSA PBS. The resulting cell suspension was centrifuged to exclude aggregates. The supernatant was recovered and the cells were washed again with 0.5% BSA PBS. Thymocytes were then counted and labeled.

Blood samples were obtained from healthy donors from the blood bank in accordance with institutional regulations.

Adoptive transfer. Spleens from CD3 ϵ ⁺ MR1⁺ mice were harvested and 10⁷ splenocytes were IV injected into MR1⁺ or MR1⁻ TCR $\alpha\beta$ double Tg Rag⁺ mice. 2 wk later, the blood, spleen, and MLN were harvested and analyzed by FACS.

FTOC. iV α 19 Tg C α ⁻ MR1⁻ or MR1⁺ female mice were caged one night with the respective genotype male mice. Pregnant female mice were sacrificed at day 14. Uterine corns were harvested in CO₂-independent medium supplemented with 5% FCS and penicillin/streptomycin (Invitrogen). Fetal thymuses were harvested and cultured in 300 μ l of IMDM medium supplemented with 10% FCS, 50 μ M beta-mercaptoethanol, 10 mM Hepes, 1 mM Sodium pyruvate, 2 mM L-glutamine, and penicillin/streptomycin in transwell plates from Costar (0.4 μ m, 12 wells). The medium was changed every 3 d over a period of 6–8 d.

Amplification, cloning, and sequencing of V α 19-J α 33 junctions and V β 6 segments. Molecular biology methods: RNA extraction, reverse transcription, TCR primers, PCR methods, and quantitative polyclonal PCR and polyclonal sequencing were carried out as previously described [14,22].

Supporting Information

Figure S1. The Canonical Sequence of MAIT Cells Is Found only in the 3C10⁺CD161⁺ Population

Sequence of V α 7.2-C α amplicons obtained after polyclonal sequencing, with a specific V α 7.2 primer, of $\alpha\beta$ TCR T cells sorted from either 3C10⁺CD161^{high} or 3C10⁺CD161^{lo} cells in DN, CD8 β , and CD4 subsets. Representative of four independent experiments.

Found at doi:10.1371/journal.pbio.1000054.sg001 (866 KB PDF).

Figure S2. CD8 β Mean Fluorescence Intensity on MAIT Cells

Representative staining of MAIT cells (3C10⁺CD161^{high}) and mainstream T cells (3C10⁺CD161^{lo}) gated on CD4⁻ $\alpha\beta$ TCR T cells in PBMCs (upper panel). Representative CD8 α /CD8 β staining gated on mainstream CD4⁻ T cell and CD4⁻ MAIT cells (left and right middle panels, respectively). CD8 α and CD8 β expression by CD4⁻ mainstream T cells or CD4⁻ MAIT cells (left and right lower panels, respectively). Percentages of mainstream T and MAIT cells are boxed, upper panel. Representative of three independent experiments.

Found at doi:10.1371/journal.pbio.1000054.sg002 (98 KB PDF).

Figure S3. Phenotype of iV α 19-J α 33 and V β 6 Transgenic Mice

(A) Absolute number of mature T cells in lymphoid organs of C57Bl/6 (black square) and iV α 19-J α 33 transgenic mice in a C α ⁻ (gray circle) or C α ⁻TAP⁻Ii⁻ (black circle) background. Mononuclear cells from thymus (a), spleen (b), peripheral lymph nodes (PLN) (c), MLN (d), and gut LP (e) were harvested as described, counted, and the percentage of TCR β ⁺ cells was determined by FACS analysis. Each dot represents an individual mouse.

(B) Frequency of V β 6 (left panel) and V β 8 (right panel) in DN, CD8, and CD4 populations, analyzed by FACS analysis, in $\alpha\beta$ TCR T cells in the MLN (upper panel) and LP (lower panel) of C57Bl/6 and iV α 19-J α 33 transgenic mice in a C α ⁻ or C α ⁻TAP⁻Ii⁻ background.

(C) V β 6 (left panel) and V β 8 (right panel) bias in transgenic mice in DN, CD8, and CD4 populations on different backgrounds, analyzed by FACS, in mature thymocytes of C57Bl/6 and iV α 19-J α 33 transgenic

mice on a C α ⁻ or C α ⁻MR1⁻ (white circle) background. Each dot represents an individual mouse.

(D) Quantitative PCR analysis of iV α 19-J α 33 segment expression normalized with respect to C α gene expression on sorted DN, CD8, or CD4 T cells from thymocytes or MLN lymphocytes of MR1⁺ or MR1⁻ C57Bl/6 mice. Each dot represents an individual mouse.

Found at doi:10.1371/journal.pbio.1000054.sg003 (149 KB PDF).

Figure S4. Bias in the Coreceptor Usage in the Thymus of iV α 19-J α 33 Transgenic Mice

Representative CD8/CD4 staining gated on total thymus (upper panels) and on mature thymocytes (TCR β ^{high} HSA^{low}) (lower panels) of C57Bl/6 and iV α 19-J α 33 transgenic mice on a MR1^{+/+} or MR1^{-/-} C α ⁻ background either (left, middle, and right panels, respectively). Percentages of CD4, CD8, and DN T cells populations are boxed. Representative of ten independent experiments.

Found at doi:10.1371/journal.pbio.1000054.sg004 (71 KB PDF).

Figure S5. V β 6 and V β 8 Bias in Transgenic Mice on Different Backgrounds

Frequency of V β 6 (left panel) and V β 8 (right panel) in DN, CD8, and CD4 populations, analyzed by FACS, in $\alpha\beta$ TCR T cells from the MLN of C57Bl/6 (black square) and iV α 19-J α 33 transgenic mice on a C α ⁻ (gray circle) or C α ⁻MR1⁻ (white circle) background; upper panels. Frequency of V β 6 (left panel) and V β 8 (right panel) in DN, CD8, and CD4 populations, analyzed by FACS, in $\alpha\beta$ TCR T cells from the MLN of C57Bl/6 (black square) and C α ⁻TAP⁻Ii⁻ (black circle) or C α ⁻TAP⁻Ii⁻MR1⁻ (white circle) background; lower panels. Each dot represents an individual mouse.

Found at doi:10.1371/journal.pbio.1000054.sg005 (76 KB PDF).

Figure S6. The Canonical Sequence of MAIT Cells Is Found on the 3C10⁺CD161^{high} DN Human Cord Blood T Cells

Sequence of V α 7.2-J α 33 amplicons obtained after polyclonal sequencing, with a specific V α 7.2 primer, of 3C10⁺CD161^{hi} DN and 3C10⁺CD161^{lo} CD8 $\alpha\beta$ TCR T cells sorted from cord blood. Representative of two separate experiments.

Found at doi:10.1371/journal.pbio.1000054.sg006 (229 KB PDF).

Figure S7. MAIT Cells Display a Naive Phenotype

Representative staining of CD44 expression on DN, CD8, and CD4 gated on mature T cells (TCR^{hi}HSA^{lo}) from the thymus left part; and from TCR^{hi} T cells from MLN right part, in C57Bl/6 and V β 6, iV α 7.2-J α 33/ C α ⁻ and in iV α 19-J α 33/V β 6/ C α ⁻ transgenic mice. Shaded grey histogram is on an MR1^{+/+} background while black line is on an MR1^{-/-} background.

Found at doi:10.1371/journal.pbio.1000054.sg007 (323 KB PDF).

Figure S8. The Absence of Classical MHC Molecules Show a Dramatic MR1 Dependant CD8 Profile of MAIT Cells

(A) Absolute numbers of mature T cells from the thymus and the MLN of iV α 19-J α 33/V β 6/C α ⁻/TAP⁻Ii⁻ transgenic mice on a MR1^{+/+} (black diamond) or MR1^{-/-} (white diamond) background.

(B) Representative CD44 and a pool of endogenous V β staining of DN, CD8, and CD4 gated on TCR β ^{hi} T cells from MLN of C57Bl/6 (upper panel) and iV α 19-J α 33/V β 6/ C α ⁻/TAP⁻/Ii⁻ transgenic mice on a MR1^{+/+} (middle panel) or MR1^{-/-} (lower panel) background.

Found at doi:10.1371/journal.pbio.1000054.sg008 (188 KB PDF).

Text S1. Description and Discussion of the iV α 19 TCR α Chain and V β 6 TCR β Chain Single Transgenic Mice

Found at doi:10.1371/journal.pbio.1000054.sd001 (68 KB DOC).

Acknowledgments

We wish to thank M. Garcia, C. Billerit, S. Laigneau, and I. Grandjean for managing the mouse colonies in Paris; Z. Maciorowski and C. Guerin for cell sorting; D. Mendes Da Cruz and M. Dussiot for thymus samples; C. Picard for immunodeficient patient samples; L. Teyton for the recombinant iV α 7.2/V β 13 protein; and J.F. Davodeau and M. Bonneville for growing the iV α 7.2 clone. We thank M. Bonneville and K. Benlagha for discussions and reviewing the manuscript.

Author contributions. EM, ET, LG, CS, and OL conceived and designed the experiments. EM, ET, LD, LG, HL, CT, VP, AD, ICM, FT, SC, GV, and CS performed the experiments. EM, ET, LD, LG, HL, CT,

ICM, CS, and OL analyzed the data. SL and OL contributed reagents/materials/analysis tools. CS and OL wrote the paper.

Funding. This work was supported by grants from INSERM, Action incitative (ACI) “physiologie integrative,” Agence Nationale pour la Recherche (ANR), and Section Médicale de l’Institut Curie. The development of the 3C10 antibody was funded in part by Innate-Pharma (Marseille, France). OL is supported by la Ligue Contre le

Cancer as an “équipe labellisée.” The funders had no role in study design, data collection and analysis, decision to publish, or preparation of the manuscript.

Competing interests. OL laboratory has received funding from Innate-Pharma, which co-owns the filled patent for the 3C10 antibody. EM has received salary through this funding.

References

- Hayday AC (2000) γ δ cells: a right time and a right place for a conserved third way of protection. *Annu Rev Immunol* 18: 975–1026.
- Bendelac A, Bonneville M, Kearney JF (2001) Autoreactivity by design: innate B and T lymphocytes. *Nat Rev Immunol* 1: 177–186.
- Bendelac A, Savage PB, Teyton L (2007) The biology of NKT cells. *Annu Rev Immunol* 25: 297–336.
- Treiner E, Lantz O (2006) CD1d- and MR1-restricted invariant T cells: of mice and men. *Curr Opin Immunol* 18: 519–526.
- Lambole F, Arcangeli ML, Joret AM, Pasqualetto V, Cordier C, et al. (2006) The thymus exports long-lived fully committed T cell precursors that can colonize primary lymphoid organs. *Nat Immunol* 7: 76–82.
- Rocha B (2007) The extrathymic T-cell differentiation in the murine gut. *Immunol Rev* 215: 166–177.
- Naito T, Shiohara T, Hibi T, Suematsu M, Ishikawa H (2008) ROR γ t is dispensable for the development of intestinal mucosal T cells. *Mucosal Immunology* 1: 198–207.
- Park SH, Benlagha K, Lee D, Balish E, Bendelac A (2000) Unaltered phenotype, tissue distribution and function of Valpha14(+) NKT cells in germ-free mice. *Eur J Immunol* 30: 620–625.
- Kawaguchi-Miyashita M, Shimizu K, Nanno M, Shimada S, Watanabe T, et al. (1996) Development and cytolytic function of intestinal intraepithelial T lymphocytes in antigen-minimized mice. *Immunology* 89: 268–273.
- Kawaguchi M, Nanno M, Umesaki Y, Matsumoto S, Okada Y, et al. (1993) Cytolytic activity of intestinal intraepithelial lymphocytes in germ-free mice is strain dependent and determined by T cells expressing gamma delta T-cell antigen receptors. *Proc Natl Acad Sci U S A* 90: 8591–8594.
- Jensen KD, Su X, Shin S, Li L, Youssef S, et al. (2008) Thymic selection determines gammadelta T cell effector fate: antigen-naïve cells make interleukin-17 and antigen-experienced cells make interferon gamma. *Immunity* 29: 90–100.
- Treiner E, Duban L, Moura IC, Hansen T, Gilfillan S, et al. (2005) Mucosal-associated invariant T (MAIT) cells: an evolutionarily conserved T cell subset. *Microbes Infect* 7: 552–559.
- Bendelac A (1995) CD1: presenting unusual antigens to unusual T lymphocytes. *Science* 269: 185–186.
- Treiner E, Duban L, Bahram S, Radosavljevic M, Wanner V, et al. (2003) Selection of evolutionarily conserved mucosal-associated invariant T cells by MR1. *Nature* 422: 164–169.
- Griewank K, Borowski C, Rietdijk S, Wang N, Julien A, et al. (2007) Homotypic interactions mediated by Slamf1 and Slamf6 receptors control NKT cell lineage development. *Immunity* 27: 751–762.
- Borowski C, Bendelac A (2005) Signaling for NKT cell development: the SAP-FynT connection. *J Exp Med* 201: 833–836.
- Nichols KE, Hom J, Gong SY, Ganguly A, Ma CS, et al. (2005) Regulation of NKT cell development by SAP, the protein defective in XLP. *Nat Med* 11: 340–345.
- Pasquier B, Yin L, Fondaneche MC, Relouzat F, Bloch-Queyrat C, et al. (2005) Defective NKT cell development in mice and humans lacking the adapter SAP, the X-linked lymphoproliferative syndrome gene product. *J Exp Med* 201: 695–701.
- Veillette A, Dong Z, Latour S (2007) Consequence of the SLAM-SAP signaling pathway in innate-like and conventional lymphocytes. *Immunity* 27: 698–710.
- Kovalovsky D, Uche OU, Eladad S, Hobbs RM, Yi W, et al. (2008) The BTB-zinc finger transcriptional regulator PLZF controls the development of invariant natural killer T cell effector functions. *Nat Immunol* 9: 1055–1064.
- Savage AK, Constantinides MG, Han J, Picard D, Martin E, et al. (2008) The transcription factor PLZF directs the effector program of the NKT cell lineage. *Immunity* 29: 391–403.
- Tilloy F, Treiner E, Park SH, Garcia C, Lemonnier F, et al. (1999) An invariant T cell receptor alpha chain defines a novel TAP-independent major histocompatibility complex class Ib-restricted alpha beta T cell subpopulation in mammals. *J Exp Med* 189: 1907–1921.
- Kawachi I, Maldonado J, Strader C, Gilfillan S (2006) MR1-restricted V alpha 19i mucosal-associated invariant T cells are innate T cells in the gut lamina propria that provide a rapid and diverse cytokine response. *J Immunol* 176: 1618–1627.
- Terrence K, Pavlovich CP, Matechak EO, Fowlkes BJ (2000) Premature expression of T cell receptor (TCR)alpha beta suppresses TCRgammadelta gene rearrangement but permits development of gammadelta lineage T cells. *J Exp Med* 192: 537–548.
- Erman B, Feigenbaum L, Coligan JE, Singer A (2002) Early TCRalpha expression generates TCRalphagamma complexes that signal the DN-to-DP transition and impair development. *Nat Immunol* 3: 564–569.
- Jorgensen JL, Esser U, Fazekas de St Groth B, Reay PA, Davis MM (1992) Mapping T-cell receptor-peptide contacts by variant immunization of single-chain transgenics. *Nature* 355: 224–230.
- Viret C, Lantz O, He X, Bendelac A, Janeway CA Jr. (2000) A NK1.1+ thymocyte-derived TCR beta-chain transgene promotes positive selection of thymic NK1.1+ alpha beta T cells. *J Immunol* 165: 3004–3014.
- Grandjean I, Duban L, Bonney EA, Corcuff E, Di Santo JP, et al. (2003) Are major histocompatibility complex molecules involved in the survival of naïve CD4+ T cells? *J Exp Med* 198: 1089–1102.
- Killeen N, Moriarty A, Teh HS, Littman DR (1992) Requirement for CD8-major histocompatibility complex class I interaction in positive and negative selection of developing T cells. *J Exp Med* 176: 89–97.
- Davis DM (2007) Intercellular transfer of cell-surface proteins is common and can affect many stages of an immune response. *Nat Rev Immunol* 7: 238–243.
- Chung B, Aoukaty A, Dutz J, Terhorst C, Tan R (2005) Signaling lymphocytic activation molecule-associated protein controls NKT cell functions. *J Immunol* 174: 3153–3157.
- Okamoto N, Kanie O, Huang YY, Fujii R, Watanabe H, et al. (2005) Synthetic alpha-mannosyl ceramide as a potent stimulant for an NKT cell repertoire bearing the invariant Valpha19-Jalpha26 TCR alpha chain. *Chem Biol* 12: 677–683.
- Croxford LJ, Miyake S, Huang YY, Shimamura M, Yamamura T (2006) Invariant Va19i T cells regulate autoimmune inflammation. *Nat Immunol* 7: 987–994.
- Bendelac A (1995) Positive selection of mouse NK1+ T cells by CD1-expressing cortical thymocytes. *J Exp Med* 182: 2091–2096.
- Benlagha K, Kyin T, Beavis A, Teyton L, Bendelac A (2002) A thymic precursor to the NK T cell lineage. *Science* 296: 553–555.
- Iliev ID, Matteoli G, Rescigno M (2007) The yin and yang of intestinal epithelial cells in controlling dendritic cell function. *J Exp Med* 204: 2253–2257.
- He B, Xu W, Santini PA, Polydorides AD, Chiu A, et al. (2007) Intestinal bacteria trigger T cell-independent immunoglobulin A(2) class switching by inducing epithelial-cell secretion of the cytokine APRIL. *Immunity* 26: 812–826.
- Ley RE, Hamady M, Lozupone C, Turnbaugh PJ, Ramey RR, et al. (2008) Evolution of mammals and their gut microbes. *Science* 320: 1647–1651.
- De Rosa SC, Andrus JP, Perfetto SP, Mantovani JJ, Herzenberg LA, et al. (2004) Ontogeny of gamma delta T cells in humans. *J Immunol* 172: 1637–1645.
- Parker CM, Groh V, Band H, Porcelli SA, Morita C, et al. (1990) Evidence for extrathymic changes in the T cell receptor gamma/delta repertoire. *J Exp Med* 171: 1597–1612.
- Lantz O, Grandjean I, Matzinger P, Di Santo JP (2000) Gamma chain required for naïve CD4+ T cell survival but not for antigen proliferation. *Nat Immunol* 1: 54–58.