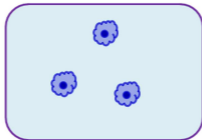




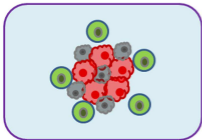


Dormancy  
therapy



**Cellular dormancy**

-  Single tumor cell
-  Activated tumor cell
-  Apoptotic cell
-  Lymphocyte



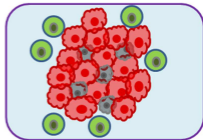
**Dormant micrometastases**

*Balancing between apoptosis and mitosis*  
*Balanced by immune system*

Angiogenic switch



Dormancy therapy



**Micrometastases development**