



HAL
open science

Multifaceted population structure and reproductive strategy in *Leishmania donovani* complex in one Sudanese village.

Virginie Rougeron, Thierry de Meeûs, Mallorie Hide, Georges Le Falher, Bruno Bucheton, Jacques Dereure, Sayda H. El-Safi, Alain Dessein, Anne-Laure Bañuls

► To cite this version:

Virginie Rougeron, Thierry de Meeûs, Mallorie Hide, Georges Le Falher, Bruno Bucheton, et al.. Multifaceted population structure and reproductive strategy in *Leishmania donovani* complex in one Sudanese village.. PLoS Neglected Tropical Diseases, 2011, 5 (12), pp.e1448. 10.1371/journal.pntd.0001448 . inserm-00691457

HAL Id: inserm-00691457

<https://inserm.hal.science/inserm-00691457>

Submitted on 26 Apr 2012

HAL is a multi-disciplinary open access archive for the deposit and dissemination of scientific research documents, whether they are published or not. The documents may come from teaching and research institutions in France or abroad, or from public or private research centers.

L'archive ouverte pluridisciplinaire **HAL**, est destinée au dépôt et à la diffusion de documents scientifiques de niveau recherche, publiés ou non, émanant des établissements d'enseignement et de recherche français ou étrangers, des laboratoires publics ou privés.

Multifaceted Population Structure and Reproductive Strategy in *Leishmania donovani* Complex in One Sudanese Village

Virginie Rougeron^{1*}, Thierry De Meeûs^{2,3,9}, Mallorie Hide¹, Georges Le Falher⁴, Bruno Bucheton², Jacques Dereure^{1,5}, Sayda H. El-Safi⁶, Alain Dessein⁷, Anne-Laure Bañuls¹

1 Laboratoire MIVEGEC (UMR IRD 224-CNRS 5290-Université Montpellier 1), Montpellier, France, **2** UMR 177 IRD-CIRAD, Centre International de Recherche-Développement sur l'Élevage en zone Subhumide (CIRDES), 01 BP 454, Bobo-Dioulasso, Burkina-Faso, **3** CNRS, Délégation Languedoc-Roussillon, Montpellier, France, **4** Centre Hospitalier, Gui de Chaulliac, Montpellier, France, **5** Centre Hospitalier Universitaire Service de Parasitologie - Mycologie, Montpellier, France, **6** Department of Microbiology and Parasitology, Faculty of Medicine, Khartoum University, Khartoum, Sudan, **7** Université de la Méditerranée - INSERM UMR 906, Marseille, France

Abstract

Leishmania species of the subgenus *Leishmania* and especially *L. donovani* are responsible for a large proportion of visceral leishmaniasis cases. The debate on the mode of reproduction and population structure of *Leishmania* parasites remains opened. It has been suggested that *Leishmania* parasites could alternate different modes of reproduction, more particularly clonality and frequent recombinations either between related individuals (endogamy) or between unrelated individuals (outcrossing) within strongly isolated subpopulations. To determine whether this assumption is generalized to other species, a population genetics analysis within *Leishmania donovani* complex strains was conducted within a single village. The results suggest that a mixed-mating reproduction system exists, an important heterogeneity of subsamples and the coexistence of several genetic entities in Sudanese *L. donovani*. Indeed, results showed significant genetic differentiation between the three taxa (*L. donovani*, *L. infantum* and *L. archibaldi*) and between the human or canine strains of such taxa, suggesting that there may be different imbricated transmission cycles involving either dogs or humans. Results also are in agreement with an almost strict specificity of *L. donovani* stricto sensu to human hosts. This empirical study demonstrates the complexity of population structure in the genus *Leishmania* and the need to pursue such kind of analyses at the smallest possible spatio-temporal and ecological scales.

Citation: Rougeron V, De Meeûs T, Hide M, Le Falher G, Bucheton B, et al. (2011) Multifaceted Population Structure and Reproductive Strategy in *Leishmania donovani* Complex in One Sudanese Village. PLoS Negl Trop Dis 5(12): e1448. doi:10.1371/journal.pntd.0001448

Editor: Hechmi Louzir, Institut Pasteur de Tunis, Tunisia

Received: March 3, 2011; **Accepted:** November 6, 2011; **Published:** December 20, 2011

Copyright: © 2011 Rougeron et al. This is an open-access article distributed under the terms of the Creative Commons Attribution License, which permits unrestricted use, distribution, and reproduction in any medium, provided the original author and source are credited.

Funding: The authors thank the French National Reference Center of Leishmania for providing the samples. They are grateful to the Institut de Recherche pour le Développement and the Centre National de la Recherche Scientifique for their support. This study was also supported by a French National Project, ANR 06-SEST-20 IAEI. The funders had no role in the study design, data collection and analysis, decision to publish, or preparation of the manuscript.

Competing Interests: The authors have declared that no competing interests exist.

* E-mail: rougeron.virginie@gmail.com

⁹ These authors contributed equally to this work.

Introduction

Leishmaniasis are worldwide vector-borne diseases of humans and domestic animals, caused by protozoan parasites of the genus *Leishmania*. These parasitic infections are a serious public health problem, with about 350 million persons at risk and 2,357,000 new cases per year [1]. The genus *Leishmania* totals approximately 20 described species causing human infections (reviewed in [2]) with a wide variety of clinical symptoms: cutaneous, visceral, mucocutaneous, mucosal and post-kala-azar dermal (PKDL) leishmaniasis. Visceral leishmaniasis is the most severe form of the disease, which can be lethal if it goes untreated. It is the most widespread leishmaniasis form, especially in India, Bangladesh, Nepal, Sudan, Ethiopia and Brazil [1,3,4]. In this study, we focused on human and canine samples collected in Sudan, where visceral leishmaniasis is endemic in the eastern and southern parts of the country and has claimed the lives of thousands of people [5].

Visceral leishmaniasis is mainly caused by species from the *Leishmania donovani* complex [6]. Multilocus enzyme electrophoresis

[MLEE] studies generated the description of three different species in this complex: *L. donovani* in the Old World, *L. infantum* in the Old World and the New World (also named *L. chagasi* there), and *L. archibaldi* in Sudan and Ethiopia [7,8]. In Sudan, the taxonomic status of these three species has been challenged using several different molecular markers, such as random amplified polymorphic DNA [RAPD], restriction fragment length polymorphism [RFLP] and microsatellites [9,10]. On the basis of both sequencing and microsatellite analysis, Jamjoom et al. proposed that *Leishmania donovani* sensu lato was the only cause of visceral leishmaniasis in East Africa (the three species falling in one clade), including Sudan [11]. Lukes et al. [12], by a multifactorial genetic analysis that includes DNA sequences of protein-coding genes as well as noncoding segments, microsatellites, restriction-fragment length polymorphisms, and randomly amplified polymorphic DNAs, suggested that *Leishmania infantum* and *L. donovani* were the only recognized species of the *L. donovani* complex [12]. It was even recently suggested that the only valid name is *L. donovani* [13].

Author Summary

Leishmaniasis are a serious public health problem, especially in developing countries, caused by *Leishmania* parasites and transmitted by sandfly bites. More information is needed on the population biology of these pathogens for diagnostic and epidemiological inquiries and for drug and vaccine elaboration. For studies dealing with the population genetics, exploring the genetic patterns of such organisms at microgeographic scales is fundamental. In this context, we made a population genetic study, based on 20 microsatellite loci, on 61 strains of *Leishmania donovani* complex collected in a Sudanese village, Babar El Fugara, during the epidemic of 1996–2000. Results showed that considering the whole sample as a single population was not adequate because of the coexistence of several genetic entities and a genetic differentiation between the human or canine strains. In addition, our findings suggested that clonality may have a strong impact on the *L. donovani* complex, unlike other *Leishmania* species. This study demonstrates the need to pursue population genetics studies in *Leishmania* species from sampling designs that control maximum possible confounding factors and to elaborate such kinds of analyses at the smallest possible spatio-temporal and ecological scales.

Nowadays, with the development of elaborated experimental techniques and sophisticated statistical tools, our understanding of the evolutionary processes that govern the propagation of these parasites is continuously improving. Since 1990, *Leishmania* parasites have been recognized as presenting a basic clonal mode of reproduction associated with rare recombination events [14,15,16]. However, recent studies based on population genetic analyses of *Leishmania* species in different environments showed strong levels of homozygosity and little amount of multilocus repeated genotypes (MLGs) [17,18,19,20,21], an observation incompatible with a strict or predominant clonal mode of reproduction [22]. More specifically, our team has proposed that *Leishmania* parasites could alternate different modes of reproduction: clonality in both vertebrate host and insect vector and recombination (recombination between related or unrelated individuals, or even interspecific recombinations) within the vector [21,23]. The need to work within different species and at finer scales was also suggested, as the study published in Rougeron et al. showed a heterogeneity at the scale studied (country) [20,23]. Working at finer scales indeed allows much more precise inferences to be made and a predominantly sexual signature in the genetic data. The objective of the present study was to explore such issues in another taxon, *Leishmania donovani* sensu lato within a sample collected in a single Sudanese village. We therefore analyzed the population structure of 61 *L. donovani* s.l. strains, collected in Babar El Fugara, a village of the Atbara River region on the Sudan-Ethiopian border, at 20 polymorphic microsatellite loci. The results of this work suggest that *L. donovani* complex is a heterogeneous taxon, that dogs are not infected by the same entities as human hosts and that the different units that compose this complex are probably strongly subdivided with a significant impact of sexual recombination between related individuals. We discuss sampling strategy issues regarding further studies and insist on the need to narrow as much as possible the spatio-temporal and ecological sampling scales.

Materials and Methods

Study site, parasites, cultures and DNA extraction

A census of the village population was conducted by Bucheton et al. [24], making personal and clinical data available. From 1997 to 2000, 61 isolates of *Leishmania donovani* complex were collected and then cultured. We obtained the samples for this study from the “the French National Reference Center of *Leishmania*”, under the agreement of Dr. Alain Dessein.

The 61 strains from Sudan were isolated from dogs (ten strains) and humans (51 strains) and characterized using the MLEE technique by Dereure et al. [25]. Thirty-three strains were identified as *L. donovani*, 17 strains as *L. infantum* and 11 strains as *L. archibaldi* (see supplementary data Table S1). Promastigotes were cultured at 26°C by weekly subpassages in RPMI 1640 medium, buffered with 25 mM HEPES, 2 mM NaHCO₃ and supplemented with 20% heat-inactivated fetal calf serum, 2 mM glutamine, 100 U/ml penicillin and 100 µg/mL streptomycin. Cultures were harvested by centrifugation and stored at –80°C until DNA extraction. Genomic DNA was extracted using the DNeasy Blood and Tissues Kit (Qiagen, Courtaboeuf, France), following the manufacturer’s recommendations.

Genotyping

The 20 microsatellite loci investigated (15 already published [26] and five developed in the laboratory) are listed in Supplementary data Table S1. The 61 strains (and M9702, as *L. chagasi* outgroup) under study were amplified according to the following conditions. Every 30-µL reaction mix was composed of 1 µL of each primer (10 µM), the forward being labelled, 100 ng template DNA, 0.9 µL dNTP mix (5 mM), 3 µL buffer 10× and 0.3 µL *Taq Polymerase* (Roche Diagnostics, 5 UI/µL). Amplifications were carried out in a thermal cycler using the following reaction conditions: 35 cycles of 94°C for 30 s, annealing temperature of each locus (see Table 1) for 1 min, 72°C for 1 min and a final extension step of 72°C for 10 min. The reaction products were visualized on a 1.5% agarose gel stained with EZ VISION™ DNA Dye (Amresco). Fluorescence-labelled PCR products were sized on Applied Biosystems Prism 310, with a Genescan 500 LIZ internal size standard. All 61 isolates were genotyped at all 20 loci.

Statistical analysis

Data were processed through Create V 1.1 [27] to convert the data for different usage. We mainly analysed data with Fstat Version 2.9.3.2 software (Goudet 2002, updated from Goudet [28]), which computes estimates and tests the significance of the following population genetics parameters. Genetic polymorphism was measured by the number of alleles per locus (N_a) and by Nei’s unbiased estimate of genetic diversity within subsamples H_s [29]. We estimated Wright’s F statistics [30] with Weir and Cockerham’s method [31]: F_{IS} measures the relative inbreeding of individuals due to the local non-random union of gametes in each subpopulation, and F_{ST} measures the relative inbreeding in subpopulations attributable to the subdivision of the total population into subpopulation of limited size. F_{ST} thus also measures genetic differentiation between subpopulations. F_{IS} ranges between –1 and 1: a negative value corresponds to an excess of heterozygotes, a positive value to heterozygote deficiency; 0 is expected under panmixia. The significance of the departure from 0 was tested by 10,000 randomisations of alleles within subpopulations (to test random mating) and individuals across subsamples (for differentiation). The statistic used for random mating (Hardy-Weinberg Equilibrium) testing was simply Weir

Table 1. Description of the 20 microsatellite loci used in this study for *Leishmania donovani* complex.

Locus	Locus abbreviation	GenBank Accession no.	Allele size (bp)	Chromosome	T _a (°C)	N _a	H _s	F _{IS}
DPB1	D1	AF182167	143–147	8	59	4	0.544	0.970
DPB2	D2	AF182167	235–245	8	59	6	0.526	0.688
HG	HG	AF170105	187–203	12	55,2	6	0.725	0.887
Rossi1	R1	X76394	101–115	8	59	5	0.534	0.724
Rossi2	R2	X76393	143–163	14	57	5	0.657	0.077
LIST7021*	L21	AF427869	216–228	36	54	3	0.423	0.884
LIST7024*	L24	AF427872	198–222	30	59	7	0.786	0.020
LIST7025*	L25	AF427873	168–212	10	56	8	0.373	0.122
LIST7026*	L26	AF427874	207–221	13	56	2	0.300	0.672
LIST7027*	L27	AF427875	185–191	26	59	4	0.501	0.967
LIST7028*	L28	AF427876	151–153	36	58	2	0.450	0.016
Locus	Locus abbreviation	GenBank Accession no.	Allele size (bp)	Chromosome	T _a (°C)	N _a	H _s	F _{IS}
LIST7029*	L29	AF427877	172–176	30	56	3	0.374	0.869
LIST7030*	L30	AF427878	175–177	17	59	2	0.341	0.904
LIST7031*	L31	AF427879	164–208	10	54	3	0.290	0.208
LIST7033*	L33	AF427881	176–206	25	58	6	0.611	0.866
LIST7034*	L34	AF427882	143–171	12	54	5	0.254	0.677
LIST7035*	L35	AF427883	185–199	23	56	3	0.376	0.956
LIST7037*	L37	AF427885	171–201	21	58	5	0.562	0.067
LIST7038*	L38	AF427886	128–146	26	56	3	0.326	0.598
LIST7039*	L39	AF427887	190–192	30	58	3	0.537	0.847
Mean ± standard error				...		4.25±1.74	0.475±0.15	0.584±0.3

The following parameters are described: name, abbreviation, Genebank accession number, allele size (bp), chromosome localization, thermocycling conditions (annealing temperature, T_a), genetic variation (alleles number, N_a), average estimate within-sample gene diversity H_s, and deviation from panmixia measured as F_{IS}. The loci noted by "*" were developed by Jamjoom *et al.* [26]. doi:10.1371/journal.pntd.0001448.t001

and Cockerham's estimator f (F_{IS} and F_{ST}). For the genetic differentiation test, we used the log likelihood ratio G -based test of Goudet *et al.* [32] summed over all loci. Confidence intervals were estimated by bootstrapping over loci or jack-knifing over populations with Fstat as described in De Meeûs *et al.* [33].

Genetic diversity, as measured by Nei's H_s, can lower the maximum possible value for F_{ST}. According to classical formulation (e.g. [34] $F_{ST} = (Q_S - Q_T) / (1 - Q_T)$, where Q_S is the probability to sample twice the same allele in a subpopulation and Q_T is the probability to sample twice the same allele in different subpopulations. If a population was totally subdivided, then the probability to sample twice the same allele in two different subpopulations should be null and thus F_{ST} should be equal to the probability to sample twice the same allele in a subpopulation Q_S. H_s being the probability to sample two alleles that are different hence $Q_S = 1 - H_s$. The maximum possible value for F_{ST} in a sample with a given H_s can thus be estimated as $1 - H_s$ and a corrected version of F_{ST} as $F_{ST}' = F_{ST} / (1 - H_s)$ [33,35].

Data were heterogeneous regarding *Leishmania* species (as recognized by MLEE typing), year of sampling and host species. To assess the possible contribution of these factors to genetic partitioning (Wahlund effect), we compared F_{IS} obtained with four different sampling strategies. The first sampling strategy considered each *Leishmania* species-year of sampling–host species combinations as different subsamples (14 subsamples, "All separated" strategy). The second strategy ignored the *Leishmania*

species distinction (six subsamples, "Species fused" strategy). The third strategy ignored the year of sampling (six subsamples, "Years fused" strategy) and the fourth one ignored the host species (10 subsamples, "Hosts fused" strategy). For significant difference testing, we undertook planned paired Wilcoxon signed rank tests between "All separated" and each of the other three strategies ordered as above with sequential Bonferroni correction (multiplying the P -values by 3, 2 and 1, respectively). Unilateral ("All separated" has a smaller F_{IS} than the other three strategies) Wilcoxon signed rank tests were undertaken under R [36]. Differentiation between the relevant units controlled for the other factors were then undertaken with paired subsample differentiation tests (F_{ST} estimation and G -based randomisation test). When two values were obtained for the same type of differentiation (e.g. differentiation between *L. archibaldi* and *L. infantum* in 1997 and 1998), these values were combined with an unweighted mean for F_{ST} (e.g. over years) and Stouffer's Z test (Whitlock, 2005) for P -values as recommended [37].

Linkage disequilibrium between pairs of loci (non-random association of alleles at different loci) was assessed with a randomisation test (genotypes at two loci are associated at random a number of times) using Fstat software Version 2.9.3.2 software (Goudet 2002, updated from Goudet [28]). The statistic used was the log likelihood ratio G summed over all subpopulations, known to be more powerful than other combinatory procedures [37]. Because there are as many tests as locus pairs tested (here 15×14/

2 = 190), we expected $0.05 \times 190 \sim 9.5$ significant tests under the null hypothesis of no linkage disequilibrium at significance level $\alpha = 0.05$. Thus we used the unilateral (“greater”) exact binomial test to check if there was significantly more than 5% significant tests in the 190 tests series under R [36].

The BAPS version 5.1 software identifies a hidden structure within populations (admixture) through a Bayesian analysis [38]. This software was used to detect possible Wahlund effects and has been successfully applied to other parasites [21,39,40]. The BAPS software uses stochastic optimization to infer the posterior mode of genetic structure. To obtain the best distribution of the entire population, we ran the program 50 times in order to obtain the right number of clusters. The same approach has been applied within *L. donovani* 1997, *L. donovani* 1998 and *L. infantum* from humans for which enough individuals were available. Each of the three samples was submitted to a clustering exploration by BAPS with a maximum number of clusters set (19, 13 and 12, respectively, these values corresponding to the number of individuals in each sample). F_{IS} was recalculated in each best distribution identified by BAPS and noted F_{IS-C} . Then, for the three samples corresponding to the three species of *Leishmania*, the F_{IS-C} was compared with the initial F_{IS} using a unilateral Wilcoxon signed-rank test for paired data (with the software R), the pairing units being the 20 loci. If F_{IS-C} is significantly lower than F_{IS} , it is probable that the initial subsamples were composed of several genetically distinct entities (e.g. geographical micro-structure or subpopulations).

Since we got the data’s prevalence from Dereure et al. study [25], the prevalences were compared for each *Leishmania* species between humans and dogs (50 human strains and 20 dog strains), and the significance was tested using an exact Fisher test under the software R [36].

A Neighbor-Joining (NJ) tree [41] was constructed out of a Cavalli-Sforza and Edwards genetic distance matrix [42]. The robustness of tree topology was obtained by bootstrap resampling of loci, with 500 replications per set. We used PHYLIP software (version 3.5c; J. Felsenstein, Department of Genetics, University of Washington, Seattle, 1993) and the tree was edited using TreeDyn software [43].

Simulations were also handled with Easypop 2.0.1 (Balloux 2006, updated from Balloux 2001 [44]) to find possible sets of parameters fitting our observations.

Ethical statement

The approval for human strain study was obtained by both the federal and state Ministries of Health and by the Faculty of Medicine of Khartoum. Approval of the project to be performed was also approved for each field visit by the village committee, which included elected delegates from all ethnic groups and as well elected citizens. Since an important proportion of the population in Barbar El Fugara was illiterate, oral informed consent was obtained after the aim of the study was explained to study participants in their own language by a translator. For child participants, oral consent was obtained from their parents. The verbal consent was also obtained in the presence of the ethic group leader, who eventually provide more explanations if required. After verbal informed consent obtained from the patient, the clinician recorded it on a written form.

Results

We obtained clear electrophoregrams for all genotypes at all 20 loci investigated, with only one or two alleles per strain at each locus, which excludes events of aneuploidy (for which we would

have also expected individuals with no alleles, three or four alleles). The genotypes obtained are presented in supplemental Table S1. The data showed a low level of genetic diversity, with an average number of alleles per locus of 4.25 ± 1.74 , ranging from 2 (LIST7026, LIST7028 and LIST7030) to 8 (LIST7025) and a mean genetic diversity $H_S = 0.475 \pm 0.148$ (Table 1).

Phylogenic analysis and genetic differentiation

The dendrogram, based on 20 polymorphic microsatellite loci, represented in Figure 1 underlined two main clusters. Cluster A (36% bootstraps) regroups strains from *L. infantum* and *L. donovani*. Cluster B (sustained by a bootstrap of 32%) corresponded to *L. archibaldi* taxon and three *L. infantum* from dogs. It has to be noticed that other studies have observed, using microsatellite method, small bootstrap for large clusters and important bootstrap values only for small clusters for *L. braziliensis* [45] and *L. infantum* [46].

F_{IS} comparisons between “All separated” strategy and the three others gave significant differences, as illustrated in Figure 2, meaning each factor, *Leishmania* species, year of sampling and host species in order of importance, displays a significant signature on the apportioning of genetic information. Consequently, each *Leishmania* species of each year and each host species must be considered as separate subsamples. It has to be noticed that the significant results we obtained cannot come from an insufficient number of samples. Indeed, the significant differences evidenced are statistically valid and ignoring it might lead to overlook important ecological processes currently involved in the population biology of these *Leishmania* “lineages”. Moreover, these differentiations were confirmed by paired subsample differentiation tests, as indicated in Table 2. All *Leishmania* species are genetically different. Species differentiation seems very pronounced between *L. donovani* and *L. archibaldi* ($F_{ST}' \sim 0.767$) and smaller for the two other pairs ($F_{ST}' \sim 0.2-0.3$) (Table 2). Temporal differentiation seems only to affect *L. donovani* in humans. Considering the host origin, a weak and marginally non-significant differentiation is found between human and dog strains for *L. archibaldi*, while a strong differentiation seems to affect *L. infantum* strains between the two host species (Table 2).

Clinical forms (visceral versus PKDL in humans, see Supplementary Table S1) could only be compared for *L. donovani* in 1997 and 1998 where no differentiation could be evidenced ($F_{ST} \sim 0$, P -value > 0.4 in both cases). Consequently, clinical forms were not considered further in our analyses.

Prevalence comparisons

The data’s prevalence from Dereure et al. [25] was compared for each *Leishmania* species between humans and dogs (50 human strains and 20 dog strains). The results, presented in Table 3, show that *L. donovani* is clearly found in humans rather than in dogs (P -value = 0.001), that *L. infantum* displays a tendency to infect dogs more often (P -value = 0.04), while the difference is not significant for *L. archibaldi* (P -value = 0.2). If Bonferroni adjusted, only *L. donovani* test stays significant (P -value = 0.003).

Linkage disequilibrium study

This analysis was undertaken over all the data but considering each *Leishmania* species, year of sampling and host species combination as a distinct subsample. This provided 19 locus pairs out of 190 tests in significant linkage. This is far above the 5% expected under the null hypothesis (P -value = 0.0001). These significant tests involved 18 of the 20 loci. Within each *Leishmania* species, small subsample sizes limited the power of the test. For *L. archibaldi* (very small subsamples of four and seven individuals in dogs and human hosts respectively) only five tests out of 190 were

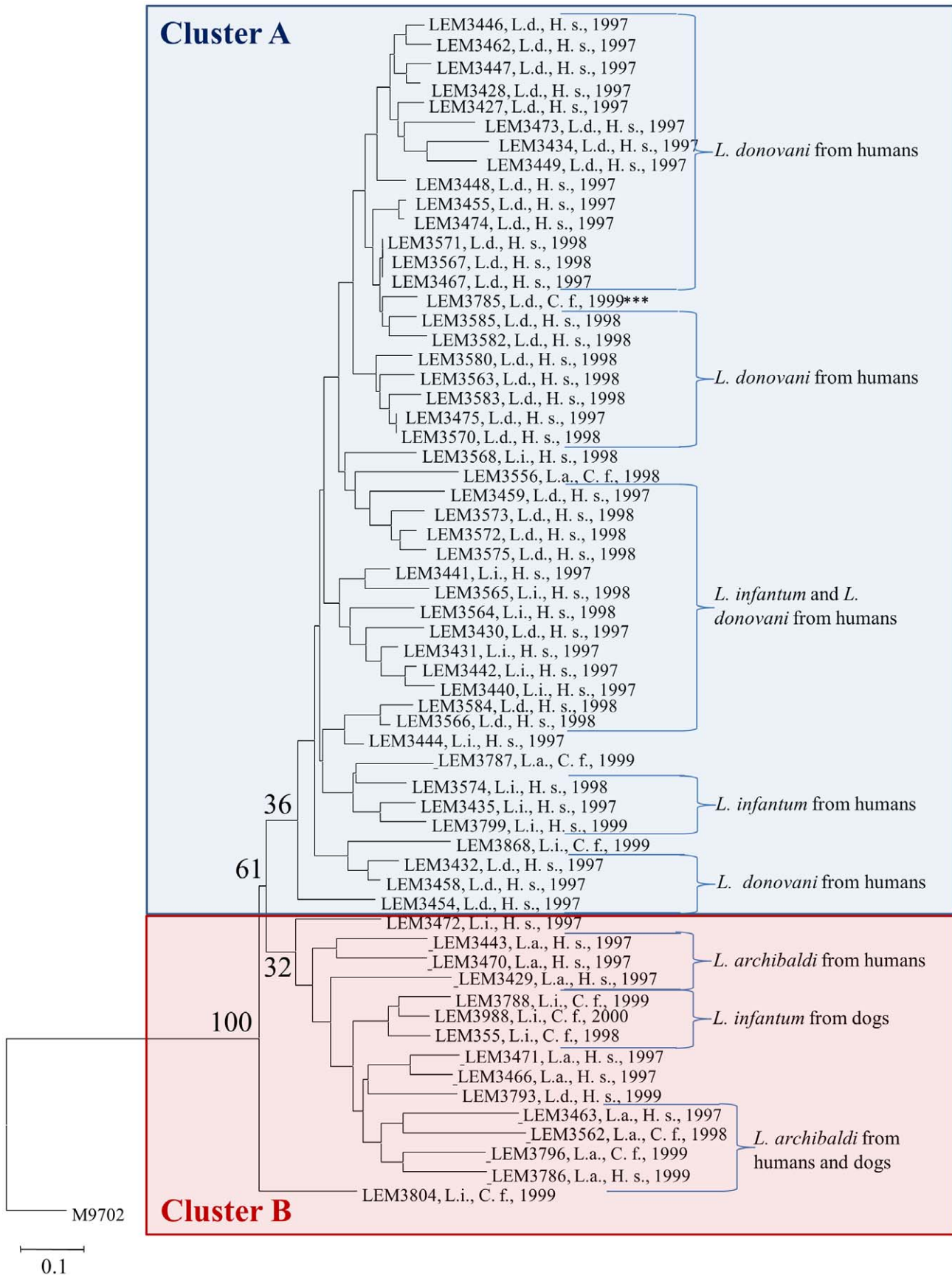


Figure 1. Genetic distance relationships among 61 strains of the *Leishmania donovani* complex in Sudan. Neighbor-Joining tree depicting genetic distance relationships based on Cavalli-Sforza's chord distances among 61 strains of the *Leishmania donovani* complex based on 20 polymorphic microsatellite loci. *Leishmania chagasi* M9702 reference strain was used as outgroup. Values on the nodes represent the percentage of bootstrap replicates over loci ($n = 500$). Samples from the species *L. archibaldi*, *L. donovani* and *L. infantum* are noted "L. a.", "L. d.", and "L. i." respectively. Hosts are noted "H. s." for *Homo sapiens* and "C. f." for *Canis familiaris*. The majority of *L. archibaldi* strains are grouped in cluster B. Cluster A contains almost all the *L. donovani* strains. *L. infantum* strains are distributed in the two clusters. The single *L. donovani* strain (LEM3785) genotyped from a dog is noted "****". doi:10.1371/journal.pntd.0001448.g001

significant (P -value = 1). In *L. donovani* 22 tests were significant (P -value = 0.0003) and in *L. infantum* 19 tests were significant (P -value = 0.0034). There is thus a global linkage at a genome-wide scale in the three *Leishmania* species populations.

Genetic diversity and heterozygote deficiency within *Leishmania* species

For each *Leishmania* species, a global and highly significant heterozygote deficit, highly variable across loci, was observed (Figure 3). These heterozygote deficits significantly decrease (P -values < 0.005) in the best partitions found by BAPS for the two species for which such analyses could be done (*L. donovani* and *L. infantum*) (Table 4 and Figure 4). Simulations, undertaken using the software EasyPop, provided patterns convergent with the pattern observed for some parameter sets only for very high clonal rates (minimum $c = 0.99$) and strong Wahlund effects (pooling one

representative of each strongly isolated subpopulation into one subsample). Nevertheless, in each of these simulations, fairly numerous multilocus genotypes (MLGs) appeared, in contrast to the real data, where on the whole data set only two MLGs (2 observations of two samples presented the same multilocus genotypes) were observed. Consequently, something else is occurring. Finally, using the NJ Tree pattern of Figure 1, keeping only *L. donovani* strains belonging to most homogeneous clusters (no leaf longer than 0.1, see Figure 1) and subdividing it into subclusters belonging to the same year indeed produced lower $F_{IS} \sim 0.27$, but still with a very strong variance across loci (ranging from -0.1 to 0.7), no significant linkage disequilibrium and a reasonable proportion of MLGs (one repeated twice and a second repeated three times) but very small subsample sizes. It has to be noticed, that the global same topology of the NJ tree using Cavalli Sforza distances has been obtained using shared allele distances,

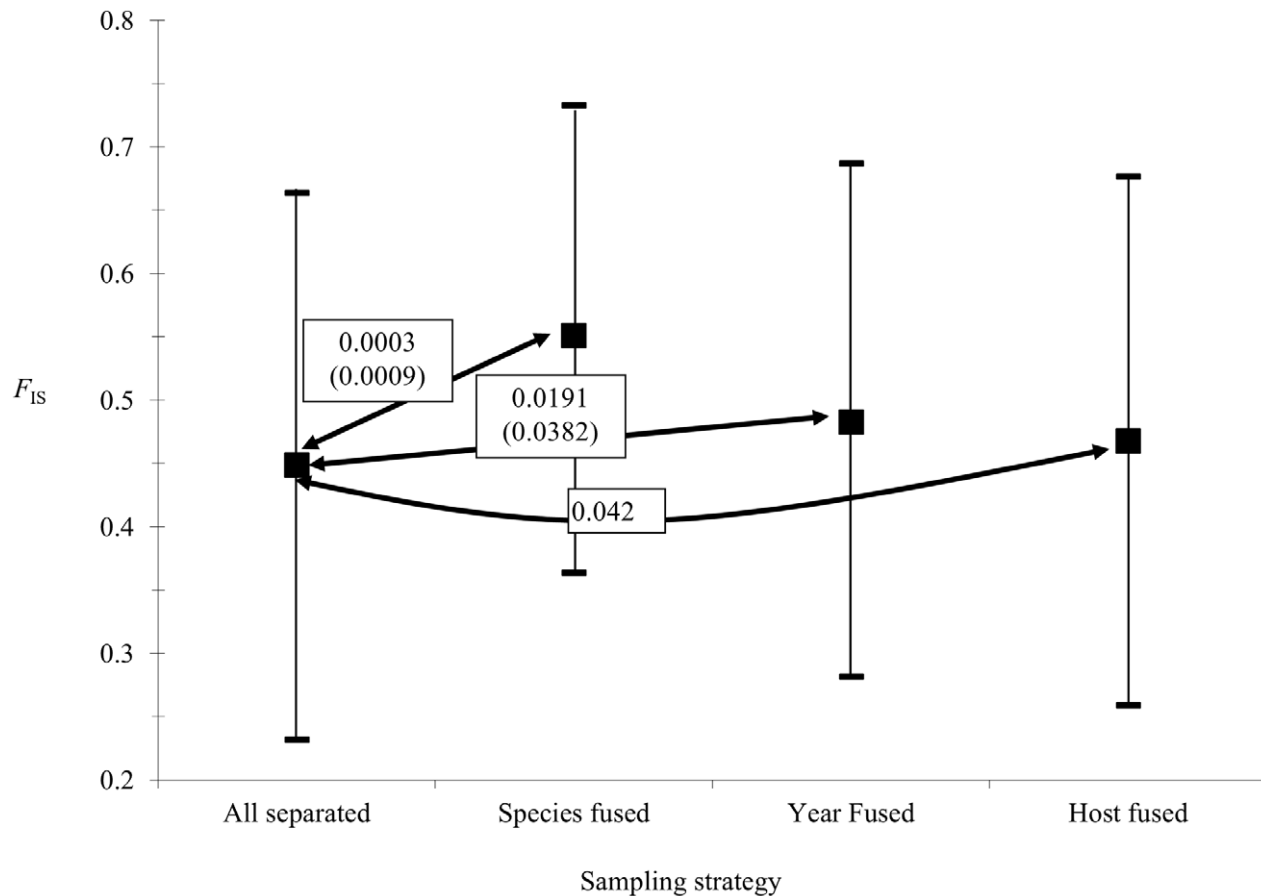


Figure 2. F_{IS} estimations between four sampling strategies. Comparison of F_{IS} estimated between the "All separated" strategy and the other three sampling strategies as defined in the text. Wilcoxon signed rank test P -values between pairs of strategies, as indicated by double arrows, are provided with the corresponding sequential Bonferroni corrected value in brackets. The 95% confidence intervals were obtained by bootstrapping over loci.

doi:10.1371/journal.pntd.0001448.g002

Table 2. Differentiation measures (F_{ST}) and testing (P -value) between different *Leishmania donovani* sl strains.

Comparison	Sub-samples	F_{ST}	P -value	H_s	F_{ST}'
Species	<i>L. archibaldi</i> vs <i>L. donovani</i> (1997, human)	0.4758	0.0001	0.3800	0.7674
	<i>L. archibaldi</i> vs <i>L. infantum</i> (1997, human)	0.3738	0.0013	0.4050	0.6282
	<i>L. archibaldi</i> vs <i>L. infantum</i> (1999, human)	-0.0464	0.3970		
	Mean (<i>L. archibaldi</i> vs <i>L. infantum</i> , human)	0.1637	0.0103	0.5205	0.3414
	<i>L. donovani</i> vs <i>L. infantum</i> (1997, human)	0.1738	0.0001	0.3240	0.2571
	<i>L. donovani</i> vs <i>L. infantum</i> (1998, human)	0.1386	0.0015	0.3210	0.2041
Years	Mean (<i>L. donovani</i> vs <i>L. infantum</i> , human)	0.1562	0.0001	0.3225	0.2306
	1997 vs 1998 (<i>L. donovani</i> , human)	0.1017	0.0001	0.2780	0.1409
	1997 vs 1998 (<i>L. infantum</i> , human)	-0.0495	0.7725		
Hosts	1998 vs 1999 (<i>L. archibaldi</i> , dog)	-0.1943	0.6624		
	In <i>L. archibaldi</i> , ignoring years	0.0495	0.0708	0.5850	0.1193
	In <i>L. infantum</i> , ignoring years	0.2872	0.0009	0.4210	0.4960

|: Irrelevant.

These estimations have been calculated according to the species (as defined by MLEE), year of sampling and host species and controlling for the other factors (only possible on some occasions). As year of sampling did not seem to greatly influence differentiation in *L. archibaldi* and *L. infantum*, years were ignored in host species comparisons in these two species (no possible tests otherwise). The results from comparable analyses were combined with an unweighted mean (for mean F_{ST}) and Stouffer's Z test [62] (for P -value). H_s and Standardised values for F_{ST} , $F_{ST}' = F_{ST}/(1 - H_s)$ are also given when appropriate.

doi:10.1371/journal.pntd.0001448.t002

and also the Minimum Evolution tree using either Cavali Sforza and shared allele distances.

Discussion

Despite the latest studies in this area, the debate on population structure and *Leishmania* reproductive mode is far from being settled and therefore deserves further investigation. Recent publications on different *Leishmania* species and in different environments seriously challenge the view that the species of the genus should display a predominantly clonal genetic signature because of important homozygosity levels and rarity of MLGs [17,18,19,20,21]. As suggested for *L. braziliensis* [21], these parasites could alternate different modes of reproduction: clonality in both vertebrate host and insect vector and sexual recombination (similar to other kinetoplastid parasites, such as *Trypanosoma brucei* s.l. [47], or other Trypanosomatidae such as *Crithidia bombi* [48]) between genetically related cells (endogamy) resulting in high levels of inbreeding. Most of these studies also revealed strong heterogeneities within *Leishmania* subsamples that probably results from Wahlund effects (mixture of differentiated true populations),

because strains were collected at too large spatial and/or temporal scales. To prevent such possible biases, we selected a sample of *L. donovani*, collected at a village scale, reducing the risk of hidden substructuring.

In this Sudanese village, the validity of the distinction between *L. donovani* sensu stricto, *L. archibaldi* and *L. infantum*, be it a true species, a subspecies or any other taxonomic level, is supported by our results, in contradiction with recent papers [9,11,13,49]. As shown here, ignoring such delimitations dangerously biases genetic data interpretation. It remains that taxonomic distinction based on isoenzymes does not seem very clear as can be seen from Figure 1 and it would be worth trying other kind of markers as MultiLocus Sequencing Typing or MultiLocus Sequencing Analysis [50] to clarify this issue.

Another significant subdivision arose between dogs and human hosts, particularly regarding *L. infantum* and to a much lesser extent *L. archibaldi*. Gene flow (gene flow) appears much reduced between dogs and human hosts for *L. infantum* and two different kinds of cycles must be present here, involving probably different vector's species and reservoirs. For *L. archibaldi* the difference is much less obvious but may be as a result of modest sampling sizes. In *L. donovani*, the greater specificity of strains to human (Table 3) and the resulting reduced number of strains found in dog did not allow for such testing. Nevertheless, the single *L. donovani* strain (LEM3785) genotyped from a dog did not show any originality as regard to its human counterparts (Figure 1). This apparent strong specificity for human hosts would mean, at least for *L. donovani*, that dogs are not a significant reservoir for these pathogens, in agreement with the anthroponotic feature of this species.

Time also appeared as a significant subdividing factor but only for *L. donovani*. The simplest interpretation being that, as patient once diagnosed are treated, a drop in subpopulation size may occur in the following year, thus leading to a genetic differentiation as a result of a bottleneck or of the replacement of empty places by other strains. Genetic diversities being not significantly different between 1998 and 1999 (Wilcoxon signed rank test, P -value = 0.27), the second hypothesis appears more likely.

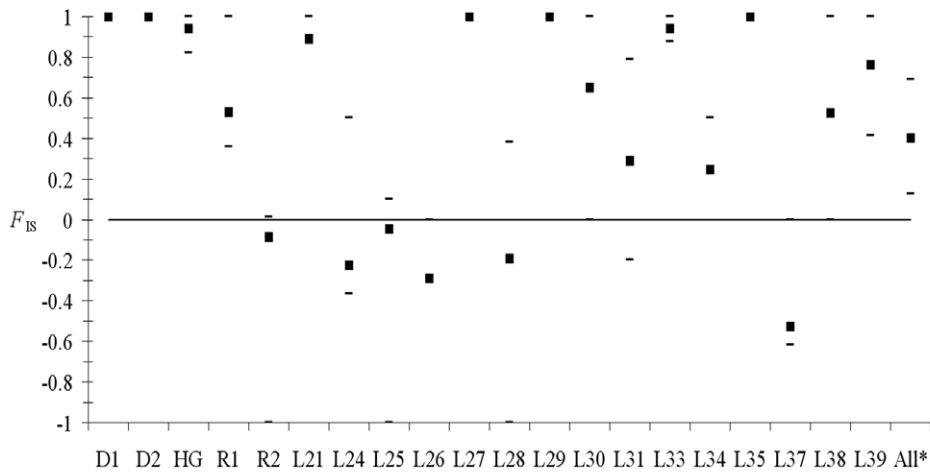
Table 3. Comparison between prevalence on humans and dogs for the different species of *Leishmania*.

Parasite	Host	Infected	Non infected	P -value
<i>L. archibaldi</i>	Humans	7	45	0.169
	Dogs	6	14	
<i>L. donovani</i>	Humans	33	19	0.001
	Dogs	4	16	
<i>L. infantum</i>	Humans	12	40	0.044
	Dogs	10	10	

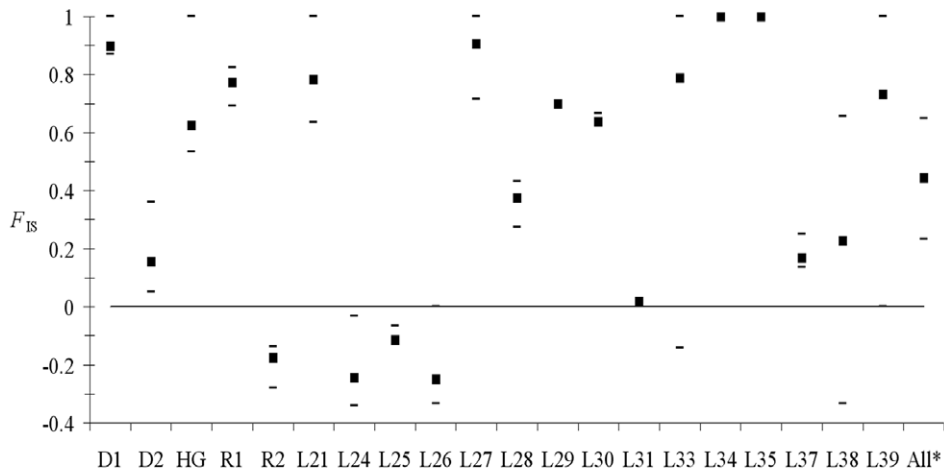
P -values correspond to the results obtained with the Fisher's exact test [25].

doi:10.1371/journal.pntd.0001448.t003

L. donovani



L. infantum



L. archibaldi

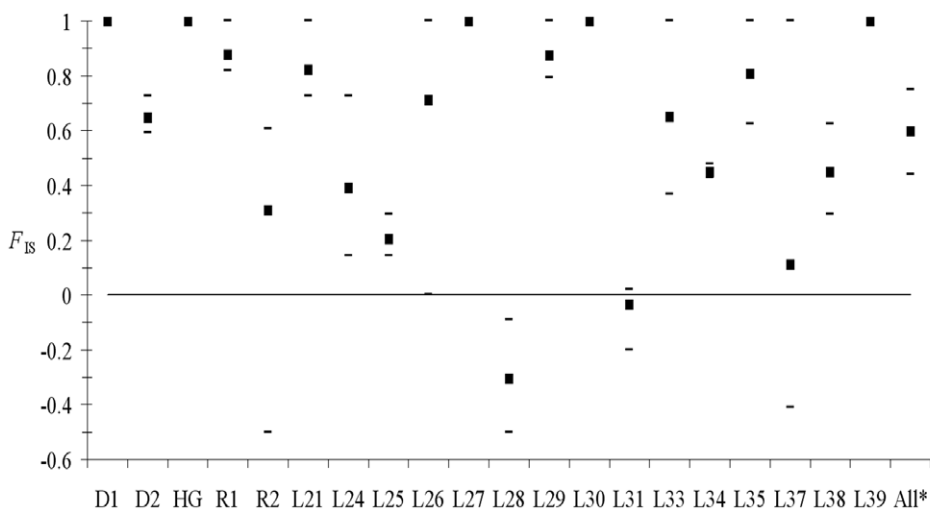


Figure 3. F_{IS} variation across loci and mean value for the three *Leishmania* species. The confidence intervals are the values obtained for dogs and humans for *L. archibaldi* and *L. infantum* and are minimum and maximum values obtained in 1997, 1998 or 1999 for *L. donovani*, except for F_{IS} over all loci (All*) where confidence intervals (CI) are the 95% CI obtained after bootstrap over the loci. doi:10.1371/journal.pntd.0001448.g003

Failing to consider all the above factors as relevant resulted in a very odd F_{IS} distribution as illustrated by Supplementary Figure S1.

Our data, and especially the NJTree approach, also suggest that hybridization between the different taxa is not impossible, though rare enough to prevent homogenization, but frequent enough to enhance heterogeneity within each cluster that could be defined.

An interesting point to notice is the absence of genetic differentiation obtained between *L. donovani* clinical forms (visceral leishmaniasis and PKDL, $F_{ST} \sim 0$, P -value > 0 in 1997 and 1998). Indeed, this result could suggest that the development of PKDL in treated patients is more likely linked to host's factors than to parasite's factors. This potential association between PKDL and host has already been suggested by Blackwell J.M.'s team. Indeed, results of this study proposed a genetic association between the polymorphism at IFNGR1 and the susceptibility of patients after treatments to PKDL (and not to visceral leishmaniasis) [51].

Regarding the reproductive strategy and population structure of these parasites, further studies should focus on the effect of individual hosts to detail the respective contribution of population differentiation as well as clonal, endogamic and outcrossing modes of reproduction in the genotypic distribution of these parasites. Nonetheless, clonality does not totally explain the strong variance across F_{IS} loci, that displayed a much wider range than what was observed for the much more homozygous *L. braziliensis* [21]. Our simulation approach suggested that obtaining the F_{IS} and its variance across loci with very few MLGs, as in the real data, was impossible to achieve. The existence of a strongly structured hierarchical meta-population, with for instance the individual hosts playing the role of micro-populations for the parasites, in combination with occasional gene flow between different genetically distant entities (species hybridizations) and/or different cycle types (zoonotic vs. anthroponotic), could explain the pattern observed on our microsatellite loci. However, as previously said, this requires further investigation. We cannot exclude the possible

disturbing role played by gene conversion known to occur in *Leishmania* [52] though we do not favour much such a hypothesis. If gene conversion is a genome wide process in *Leishmania* (genomic conversion) we would have expected a much more homogeneous homozygosity across loci than what was observed. Some loci are indeed almost always homozygous while some others display substantial amounts of heterozygosity (Figure 3). If gene conversion is site specific, we would expect it to preferentially affect coding sequences and its surrounding more than non coding zones. A glance at the localisation in the chromosome of markers did not suggest that microsatellite markers situated closer to coding sequences were more prone to display positive F_{IS} than the other microsatellites. Moreover, even if the correlation between species is good, it can be seen that it is not perfect and that some loci with $F_{IS} \sim 1$ in one species can display a fairly lower F_{IS} in another. This does not strongly support the site specific DNA conversion hypothesis. But here again, further studies would be worth being undertaken on that issue.

Null alleles are often encountered in population genetics studies. They may be frequent in allozymes [53,54] and in DNA markers such as microsatellites [55,56,57]. In our data, no blank has ever been observed in the genotypes (no missing data, i.e. all individuals were amplified at all loci), which, given the high homozygosity encountered (increased probability of blank homozygotes), makes the null allele explanation very unlikely.

Rarity of MLGs, variable but globally positive F_{IS} and strong heterogeneity within subsamples seem to be the rule for *L. donovani* as such a pattern was already reported in Eastern Africa [19]. Such results suggest the existence of strongly differentiated hidden entities. A different pattern was found in *L. donovani* from the Indian subcontinent [58] where all loci appeared weakly polymorphic, dominated by a single MLG with a few variants at one locus and, in spatially and temporally homogeneous subsamples no deviation from panmixia. Just as if this subcontinent had been colonised by one of the entities we are dealing with Africa.

The village Babar El Fugara is characterized by an epidemic context, with the occurrence of several epidemic episodes. The

Table 4. Description of the clusters identified using the software BAPS.

	Subsamples	Individuals per cluster	Number of clusters	P
<i>L. donovani</i>	1997	10	1	0.986
		2	3	
	1	2		
	1998	4	2	
		3	1	
	2	1		
<i>L. infantum</i>	Human hosts	6	1	0.813
		3	1	
		2	1	
		1	1	

Number of clusters, their size and probability of best partition (P) during BAPS analyses of *L. donovani* samples in 1997 and 1998 and of *L. infantum* from human hosts (other subsamples were too small).

doi:10.1371/journal.pntd.0001448.t004

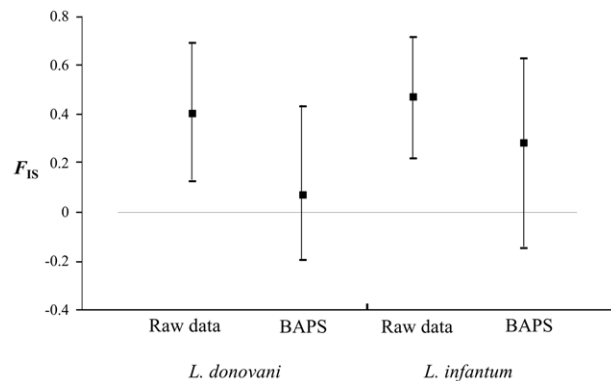


Figure 4. F_{IS} for *L. donovani* and *L. infantum* strains in the entire population and within subdivisions. These subdivisions have been identified by the software BAPS. The 95% confidence intervals were obtained by bootstrapping over loci. The decrease of F_{IS} in the subdivisions suggests a Wahlund effect. doi:10.1371/journal.pntd.0001448.g004

genetic diversity revealed by our results is not due to the arrival of a new variant but more likely was already present. Indeed, during this epidemic, all the population have been exposed to the disease and only ¼ develop visceral leishmaniasis. This observation means that the majority of the population is probably asymptomatic and constitute a reservoir for the transmission [24]. In this context, this suggested the need to pursue research in order to identify which reservoir could be involved in the maintenance of the diversity and the transmission cycles (vectors or mammal reservoirs).

To conclude on this population genetics study within the *L. donovani* complex, it clearly appears that considering the whole sample as a single population was not adequate. In addition, our findings suggested that clonality may have a stronger impact on the *L. donovani* complex than on *L. braziliensis*. It also suggested that exploring the possible strong impact of the host individual (sandfly or mammal hosts) was worth trying and indeed represents a too often neglected factor in *Leishmania* population studies in particular and in pathogenic microbes in general [22,33,59,60,61]. These results demonstrate the need to pursue population genetics studies in *Leishmania* species from sampling designs that control maximum possible confounding factors. These parasites indeed seem to be subdivided at very narrow spatio-temporal and ecological (host) scales.

Supporting Information

Figure S1 F_{IS} for each of the loci in the entire population of *L. donovani* complex. There is a large heterozygote deficiency at each locus. (TIF)

References

1. WHO (2002) Leishmaniasis.
2. Bañuls AL, Hide M, Prugnolle F (2007) *Leishmania* and the leishmaniasis: a parasite genetic update and advances in taxonomy, epidemiology and pathogenicity in humans. *Advances in Parasitology* 64: 1–109.
3. WHO (2002) Annul report. Geneva.
4. Prevalence CiDca (2010) Parasites. Leishmaniasis.
5. Seaman J, Mercer AJ, Sondorp E (1996) The epidemic of visceral leishmaniasis in western Upper Nile, southern Sudan: course and impact from 1984 to 1994. *Int J Epidemiol* 25: 862–871.
6. Lainson R, Ryan L, Shaw JJ (1987) Infective stages of *Leishmania* in the sandfly vector and some observations on the mechanism of transmission. *Mem Inst Oswaldo Cruz* 82: 421–424.
7. Pratlong F, Dereure J, Bucheton B, El-Saf S, Dessein A, et al. (2001) Sudan: the possible original focus of visceral leishmaniasis. *Parasitology* 122: 599–605.
8. Rioux JA, Lanotte G, Serres E, Pratlong F, Bastien P, et al. (1990) Taxonomy of *Leishmania*. Use of isoenzymes. Suggestions for a new classification. *Ann Parasitol Hum Comp* 65: 111–125.
9. El Tai NO, El Fari M, Mauricio I, Miles MA, Oskam L, et al. (2001) *Leishmania donovani*: intraspecific polymorphisms of Sudanese isolates revealed by PCR-based analyses and DNA sequencing. *Exp Parasitol* 97: 35–44.
10. Lewin S, Schonian G, El Tai N, Oskam L, Bastien P, et al. (2002) Strain typing in *Leishmania donovani* by using sequence-confirmed amplified region analysis. *Int J Parasitol* 32: 1267–1276.
11. Jamjoom MB, Ashford RW, Bates PA, Chance ML, Kemp SJ, et al. (2004) *Leishmania donovani* is the only cause of visceral leishmaniasis in East Africa; previous descriptions of *L. infantum* and “*L. archibaldi*” from this region are a consequence of convergent evolution in the isoenzyme data. *Parasitology* 129: 399–409.
12. Lukes J, Mauricio IL, Schonian G, Dujardin JC, Soteriadou K, et al. (2007) Evolutionary and geographical history of the *Leishmania donovani* complex with a revision of current taxonomy. *Proc Natl Acad Sci U S A* 104: 9375–9380.
13. Schonian G, Mauricio I, Cupolillo E (2010) Is it time to revise the nomenclature of *Leishmania*? *Trends in Parasitology* 26: 466–469.
14. Tibayrenc M (1992) *Leishmania*: sex, karyotypes and population genetics. *Parasitol Today* 8: 305–306; author reply 306.
15. Tibayrenc M (1993) Clonality in leishmania. *Parasitol Today* 9: 58.
16. Tibayrenc M, Ayala FJ (2002) The clonal theory of parasitic protozoa: 12 years on. *Trends Parasitol* 18: 405–410.
17. Amro A, Schonian G, Al-Sharabati MB, Azmi K, Nasereddin A, et al. (2009) Population genetics of *Leishmania infantum* in Israel and the Palestinian Authority through microsatellite analysis. *Microbes Infect* 11: 484–492.
18. Chargui N, Amro A, Haouas N, Schonian G, Babba H, et al. (2009) Population structure of Tunisian *Leishmania infantum* and evidence for the existence of

Checklist S1 STROBE checklist. Checklist of items included in this population genetic study. (PDF)

Table S1 Description of data set and microsatellite genotypes. Each sample is detailed by sample code, species attribution by MLEE [25], host, clinical forms (VL for Visceral Leishmaniasis and PKDL for PostKala azar Dermatite Leishmaniasis) and year of collection, and microsatellite genotypes obtained at each locus. (XLS)

Acknowledgments

The authors acknowledge F. Prugnolle, F. Renaud and M. Choisy for helpful discussions and their assistance in analyses and interpretation of the results. We acknowledge A. Dessein’s team for the strains and patient data collection. We also thank the French National Reference Center of *Leishmania* for providing the samples. The authors acknowledge the assistance of Dr. Linda Northup for the correction in English of the manuscript and the IFR-119 platform from Montpellier, France.

Author Contributions

Conceived and designed the experiments: VR TDM A-LB. Performed the experiments: VR. Analyzed the data: VR TDM A-LB. Contributed reagents/materials/analysis tools: VR TDM A-LB MH BB. Wrote the paper: VR TDM A-LB. Samples providers or collectors: BB AD SHE-SJD GLF.

- hybrids and gene flow between genetically different populations. *Int J Parasitol* 39: 801–811.
19. Gelanew T, Kuhls K, Hurissa Z, Weldegebreel T, Hailu W, et al. (2010) Inference of population structure of *Leishmania donovani* strains isolated from different Ethiopian visceral leishmaniasis endemic areas. *PLoS Negl Trop Dis* 4: e889.
20. Rougeron V, De Meeus T, Hide M, Walecx E, Dereure J, et al. (2010) A battery of 12 microsatellite markers for genetic analysis of the *Leishmania* (Viannia) *guyanensis* complex. *Parasitology* 137: 1879–1884.
21. Rougeron V, Meeus TD, Hide M, Walecx E, Bermudez H, et al. (2009) Extreme inbreeding in *Leishmania braziliensis*. *Proceedings of the National Academy of Sciences of the United States of America* 106: 10224–10229.
22. De Meeus T, Lehmann L, Balloux F (2006) Molecular epidemiology of clonal diploids: A quick overview and a short DIY (do it yourself) notice. *Infection Genetics and Evolution* 6: 163–170.
23. Rougeron V, De Meeus T, Kako Ouraga S, Hide M, Banuls AL (2010) “Everything you always wanted to know about sex (but were afraid to ask)” in *Leishmania* after two decades of laboratory and field analyses. *PLoS Pathog* 6.
24. Bucheton B, Kheir MM, El-Safi SH, Hammad A, Mergani A, et al. (2002) The interplay between environmental and host factors during an outbreak of visceral leishmaniasis in eastern Sudan. *Microbes Infect* 4: 1449–1457.
25. Dereure J, El-Safi SH, Bucheton B, Boni M, Kheir MM, et al. (2003) Visceral leishmaniasis in eastern Sudan: parasite identification in humans and dogs; host-parasite relationships. *Microbes Infect* 5: 1103–1108.
26. Jamjoom MB, Ashford RW, Bates PA, Kemp SJ, Noyes HA (2002) Towards a standard battery of microsatellite markers for the analysis of the *Leishmania donovani* complex. *Ann Trop Med Parasitol* 96: 265–270.
27. Coombs JA, Letcher BH, Nislow KH (2008) CREATE: a software to create input files from diploid genotypic data for 52 genetic software programs. *Molecular Ecology Resources* 8: 578–580.
28. Goudet J (1995) FSTAT (Version 1.2): A computer program to calculate F-statistics. *Journal of Heredity* 86: 485–486.
29. Nei M, Chesser RK (1983) Estimation of fixation indices and gene diversities. *Annals of Human Genetics* 47: 253–259.
30. Wright S (1965) The interpretation of population structure by F-statistics with special regard to system of mating. *Evolution* 19: 395–420.
31. Weir BS, Cockerham CC (1984) Estimating F-statistics for the analysis of population structure. *Evolution* 38: 1358–1370.
32. Goudet J, Raymond M, De Meeus T, Rousset F (1996) Testing differentiation in diploid populations. *Genetics* 144: 1933–1940.
33. de Meeus T, McCoy KD, Prugnolle F, Chevillon C, Durand P, et al. (2007) Population genetics and molecular epidemiology or how to “debusquer la bete”. *Infect Genet Evol* 7: 308–332.

34. Rousset F (2004) Genetic Structure and Selection in Subdivided Populations. Princeton: Princeton University Press.
35. Hedrick PW (2005) A standardized genetic differentiation measure. *Evolution* 59: 1633–1638.
36. R-Development-core-team (2010) R: A Language and Environment for Statistical Computing. In: R Foundation for Statistical Computing V, Austria, editor.
37. De Meeus T, Guegan JF, Teriokhin AT (2009) MultiTest V.1.2, a program to binomially combine independent tests and performance comparison with other related methods on proportional data. *BMC Bioinformatics* 10: 443.
38. Corander J, Marttinen P, Siren J, Tang J (2008) Enhanced Bayesian modelling in BAPS software for learning genetic structures of populations. *BMC Bioinformatics* 9: 539.
39. Koffi M, Solano P, Barnabé C, De Meeus T, Bucheton B, et al. (2007) Genetic characterisation of *Trypanosoma brucei* ssp by microsatellite typing: new perspectives for the molecular epidemiology of human African trypanosomiasis. *Infection Genetics and Evolution* 7: 675–684.
40. Ravel S, De Meeus T, Dujardin JP, Zeze DG, Gooding RH, et al. (2007) The tsetse fly *Glossina palpalis palpalis* is composed of several genetically differentiated small populations in the sleeping sickness focus of Bonon, Côte d'Ivoire. *Infection Genetics and Evolution* 7: 116–125.
41. Saitou N, Nei M (1987) The neighbor-joining method: a new method for reconstructing phylogenetic trees. *Molecular biology and evolution* 4: 406–425.
42. Cavalli-Sforza LL, Edwards AWF (1967) Phylogenetic analysis: model and estimation procedures. *American Journal of Human Genetics* 19: 233–257.
43. Chevenet F, Brun C, Bañuls AL, Jacq B, Christen R (2006) TreeDyn: towards dynamic graphics and annotations for analyses of trees. *BMC bioinformatics* 7: 439.
44. Balloux F (2001) EASYPOP (version 1.7): A computer program for population genetics simulations. *Journal of Heredity* 92: 301–302.
45. Oddone RSC, Schönian G, dos Santos de Sousa C, Cupolillo E, Espinosa D, Arevalo J, Noyes H, Mauricio I, Kuhls K (2009) Development of a multilocus microsatellite typing 1 approach for discriminating strains of the *Leishmania* subgenus (*L.*) *Viannia*. *Journal of Clinical Microbiology*.
46. Kuhls K, Keilonat L, Ochsenreither S, Schaar M, Schweynoch C, et al. (2007) Multilocus microsatellite typing (MLMT) reveals genetically isolated populations between and within the main endemic regions of visceral leishmaniasis. *Microbes Infect* 9: 334–343.
47. Tait A, MacLeod A, Tweedie A, Masiga D, Turner CMR (2007) Genetic exchange in *Trypanosoma brucei*: Evidence for mating prior to metacyclic stage development. *Molecular and Biochemical Parasitology* 151: 133–136.
48. Schmid-Hempel R, Salathe R, Tognazzo M, Schmid-Hempel P (2011) Genetic exchange and emergence of novel strains in directly transmitted trypanosomatids. *Infect Genet Evol* 11: 564–571.
49. Mauricio IL, Gaunt MW, Stothard JR, Miles MA (2001) Genetic typing and phylogeny of the *Leishmania donovani* complex by restriction analysis of PCR amplified gp63 intergenic regions. *Parasitology* 122: 393–403.
50. Richter D, Postic D, Sertour N, Livey I, Matuschka FR, et al. (2006) Delineation of *Borrelia burgdorferi* sensu lato species by multilocus sequence analysis and confirmation of the delineation of *Borrelia spielmanii* sp nov. *International Journal of Systematic and Evolutionary Microbiology* 56: 873–881.
51. Mohamed HS, Ibrahim ME, Miller EN, Peacock CS, Khalil EA, et al. (2003) Genetic susceptibility to visceral leishmaniasis in The Sudan: linkage and association with IL4 and IFNGR1. *Genes Immun* 4: 351–355.
52. Mauricio IL, Gaunt MW, Stothard JR, Miles MA (2007) Glycoprotein 63 (gp63) genes show gene conversion and reveal the evolution of Old World *Leishmania*. *Int J Parasitol* 37: 565–576.
53. Gaffney D, Campbell RA (1994) A PCR based method to determine the Kalow allele of the cholinesterase gene: the E1k allele frequency and its significance in the normal population. *J Med Genet* 31: 248–250.
54. Nébavi F, Ayala FJ, Renaud F, Bertout S, Eholié S, et al. (2006) Clonal population structure and genetic diversity of *Candida albicans* in AIDS patients from Abidjan (Cote d'Ivoire) (vol 103, pg 3663, 2006). *Proceedings of the National Academy of Sciences of the United States of America* 103: 5632–5632.
55. Brookfield J (1996) Population genetics. *Curr Biol* 6: 354–356.
56. Paetkau D, Strobeck C (1995) The molecular basis and evolutionary history of a microsatellite null allele in bears. *Mol Ecol* 4: 519–520.
57. Pemberton JM, Slate J, Bancroft DR, Barrett JA (1995) Nonamplifying alleles at microsatellite loci: a caution for parentage and population studies. *Mol Ecol* 4: 249–252.
58. Alam MZ, Kuhls K, Schweynoch C, Sundar S, Rijal S, et al. (2009) Multilocus microsatellite typing (MLMT) reveals genetic homogeneity of *Leishmania donovani* strains in the Indian subcontinent. *Infect Genet Evol* 9: 24–31.
59. Prugnolle F, De Meeus T (2010) Apparent high recombination rates in clonal parasitic organisms due to inappropriate sampling design. *Heredity* 104: 135–140.
60. De Meeus T, Prugnolle F, Agnew P (2009) Lost Sex: The Evolutionary Biology of Parthenogenesis Asexual reproduction in infectious diseases.: Schön I, Martens K, van Dijk P. pp 517–533.
61. Razakandrainibe FG, Durand P, Koella JC, De Meeus T, Rousset F, et al. (2005) “Clonal” population structure of the malaria agent *Plasmodium falciparum* in high-infection regions. *Proceedings of the National Academy of Sciences of the United States of America* 102: 17388–17393.
62. Whitlock MC (2005) Combining probability from independent tests: the weighted Z-method is superior to Fisher's approach. *J Evol Biol* 18: 1368–1373.