



**HAL**  
open science

## The PKC $\theta$ pathway participates in the aberrant accumulation of Fra-1 protein in invasive ER-negative breast cancer cells.

Karine Belguise, Sandrine Milord, Florence Galtier, Gabriel Moquet-Torcy,  
Marc Piechaczyk, Dany Chalbos

### ► To cite this version:

Karine Belguise, Sandrine Milord, Florence Galtier, Gabriel Moquet-Torcy, Marc Piechaczyk, et al.. The PKC $\theta$  pathway participates in the aberrant accumulation of Fra-1 protein in invasive ER-negative breast cancer cells.: PKC $\theta$  pathway stabilises Fra-1. *Oncogene*, 2012, 31 (47), pp.4889-97. 10.1038/onc.2011.659 . inserm-00668852

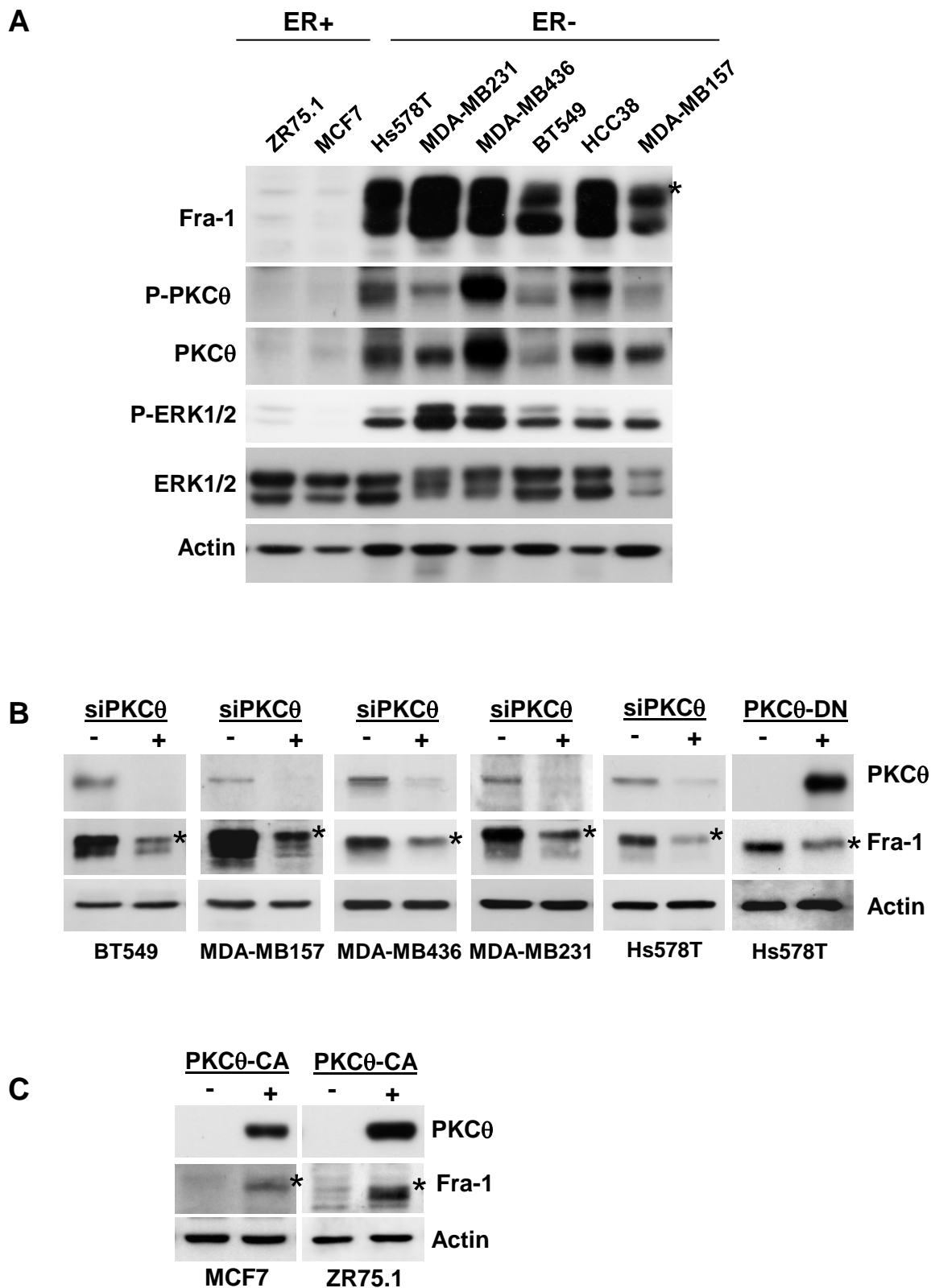
**HAL Id: inserm-00668852**

**<https://inserm.hal.science/inserm-00668852>**

Submitted on 10 Aug 2012

**HAL** is a multi-disciplinary open access archive for the deposit and dissemination of scientific research documents, whether they are published or not. The documents may come from teaching and research institutions in France or abroad, or from public or private research centers.

L'archive ouverte pluridisciplinaire **HAL**, est destinée au dépôt et à la diffusion de documents scientifiques de niveau recherche, publiés ou non, émanant des établissements d'enseignement et de recherche français ou étrangers, des laboratoires publics ou privés.



**Figure 1**

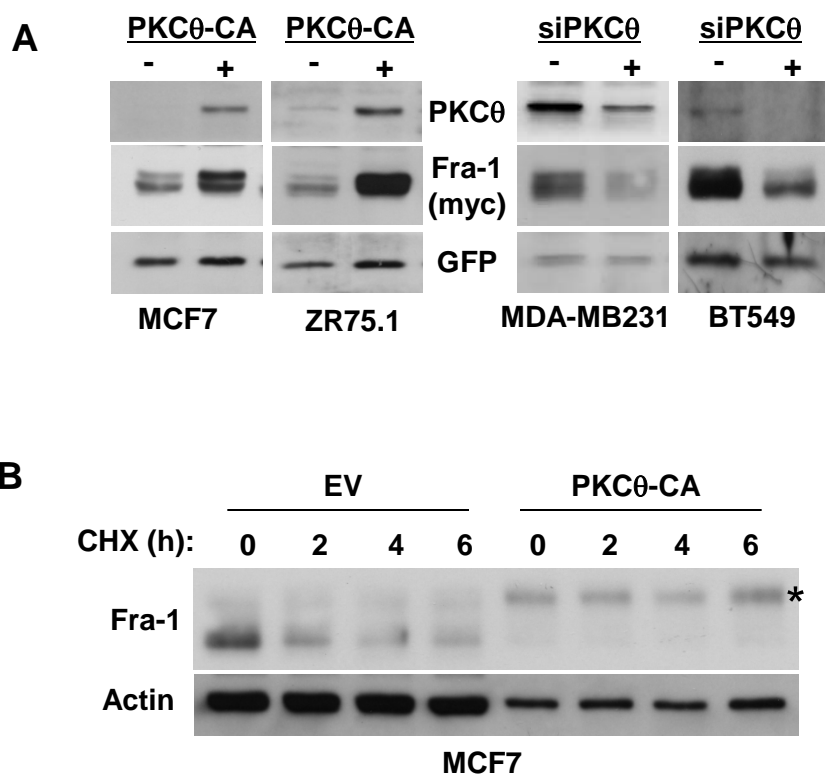


Figure 2

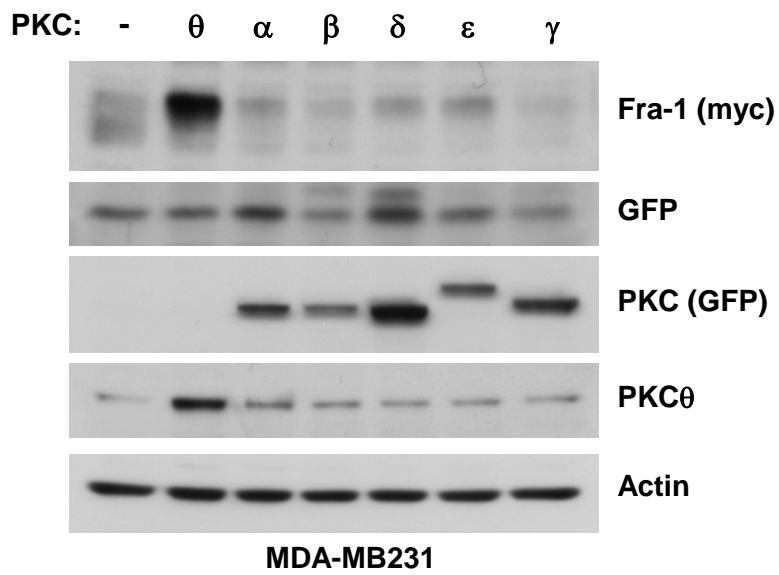
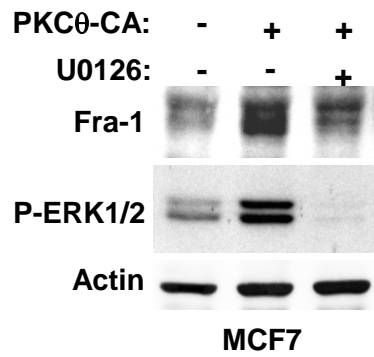
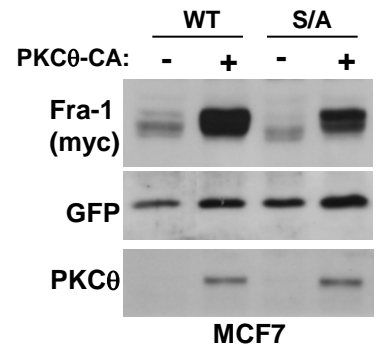
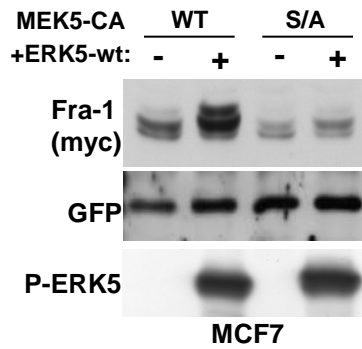
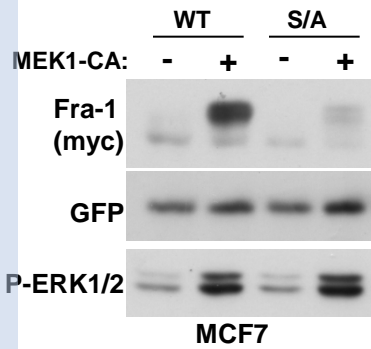


Figure 3

**A**



**B**



**Figure 4**

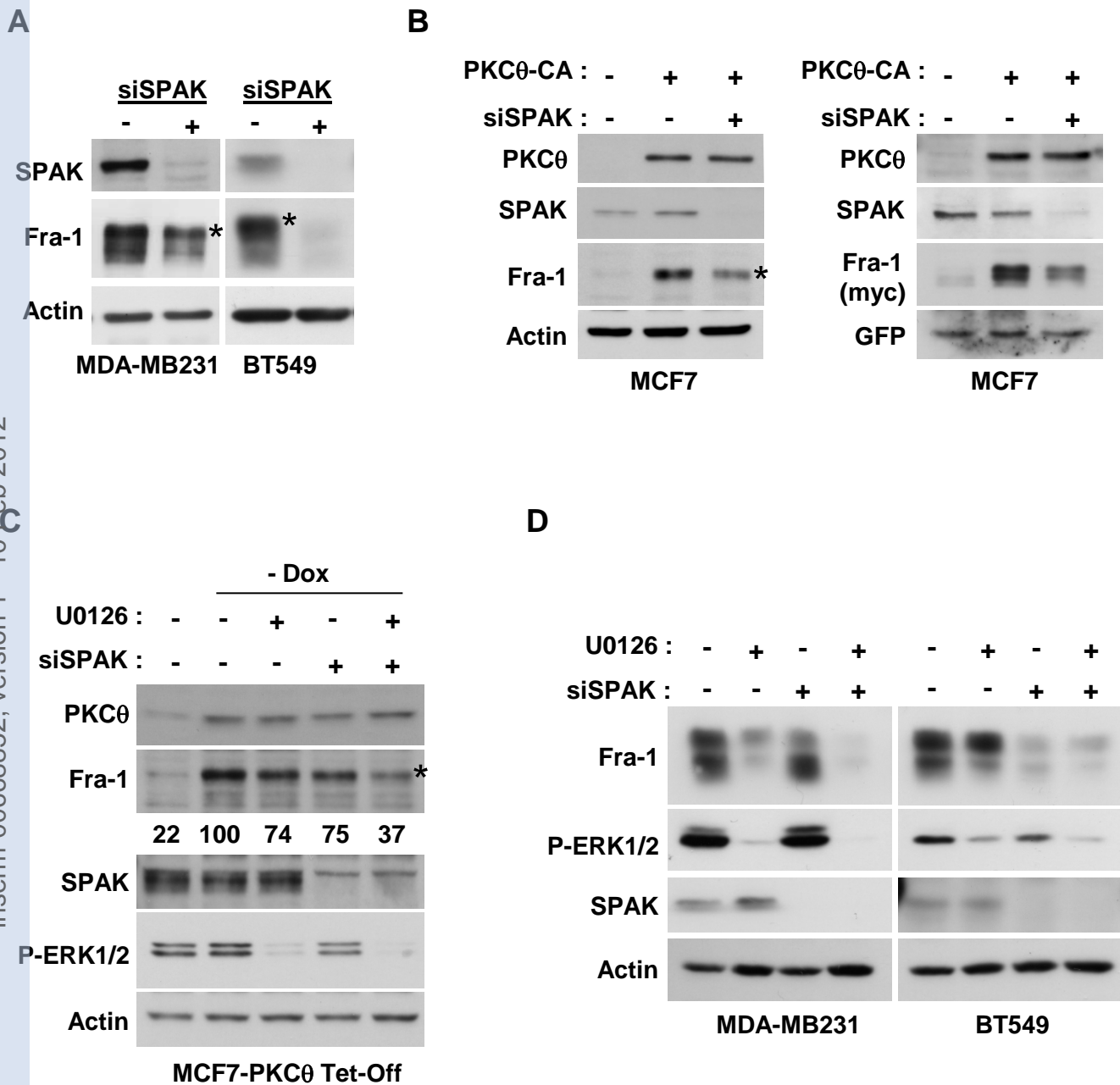
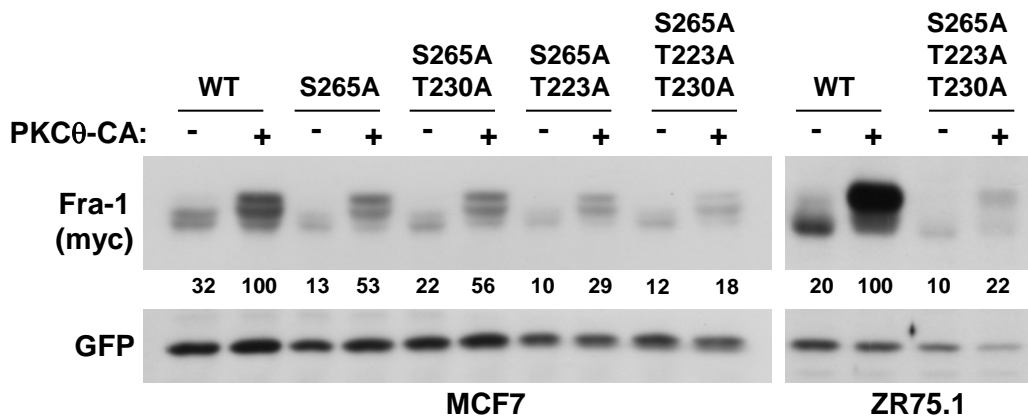
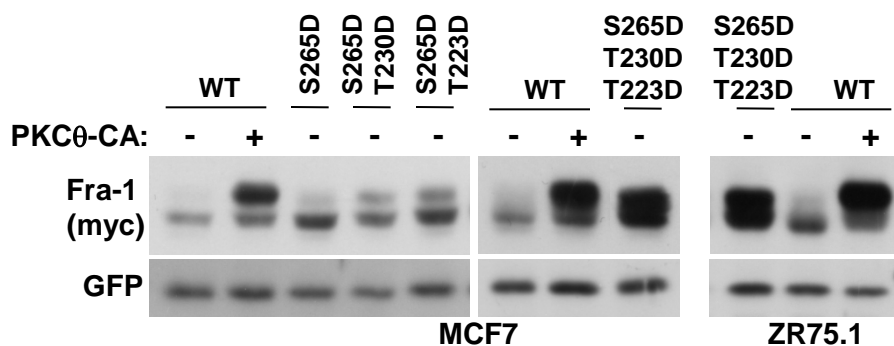


Figure 5

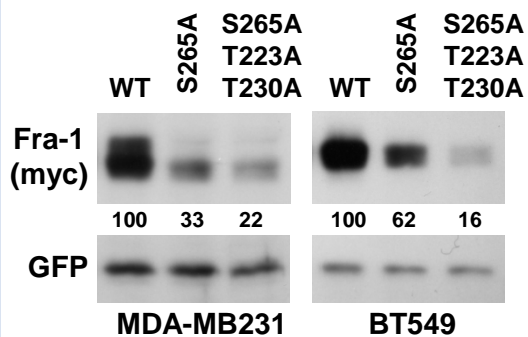
**A**



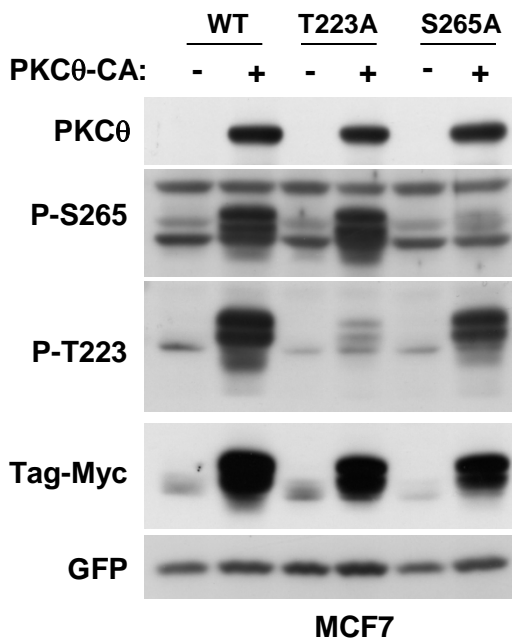
**B**



**C**

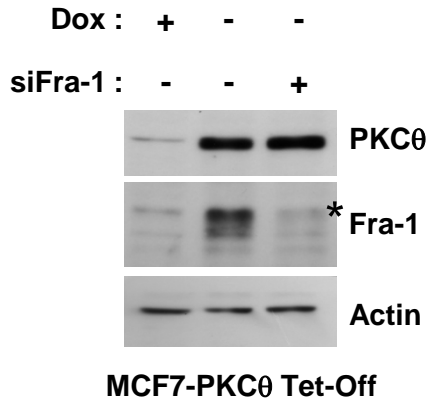


**D**

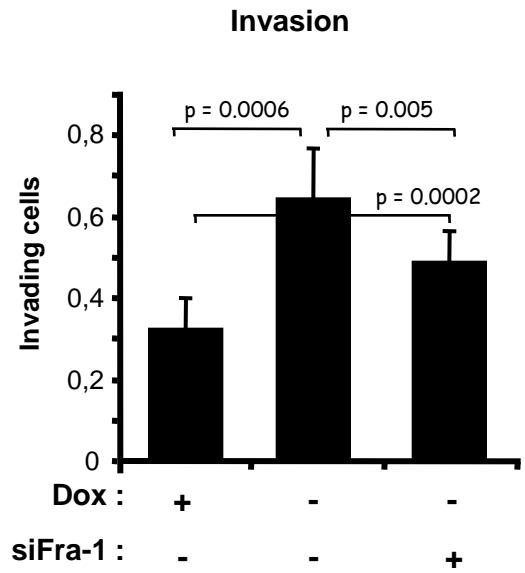


**Figure 6**

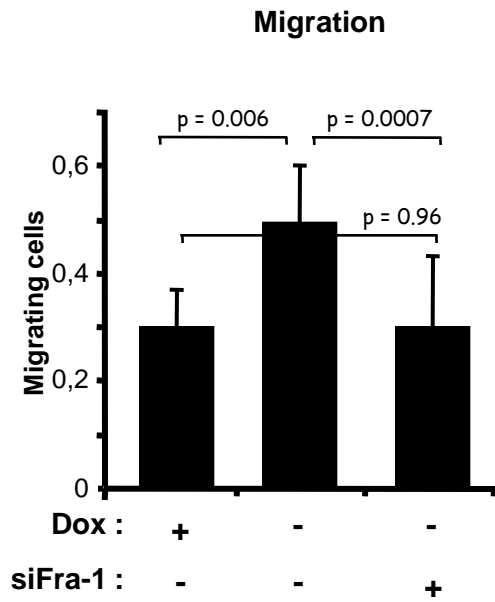
**A**



**B**



**C**



**Figure 7**