



HAL
open science

Preliminary MRI quality assessment and device acceptance guidelines for a multicenter bioclinical study: the GO Glioblastoma Project.

Sylvain Ollivro, Pierre-Antoine Eliat, Eric Hitti, Loan Tran, Jacques D. de Certaines, Hervé Saint-Jalmes

► To cite this version:

Sylvain Ollivro, Pierre-Antoine Eliat, Eric Hitti, Loan Tran, Jacques D. de Certaines, et al.. Preliminary MRI quality assessment and device acceptance guidelines for a multicenter bioclinical study: the GO Glioblastoma Project.. *Journal of Neuroimaging*, 2012, 22 (4), pp.336-42. 10.1111/j.1552-6569.2011.00638.x . inserm-00664039

HAL Id: inserm-00664039

<https://inserm.hal.science/inserm-00664039v1>

Submitted on 30 Jan 2012

HAL is a multi-disciplinary open access archive for the deposit and dissemination of scientific research documents, whether they are published or not. The documents may come from teaching and research institutions in France or abroad, or from public or private research centers.

L'archive ouverte pluridisciplinaire **HAL**, est destinée au dépôt et à la diffusion de documents scientifiques de niveau recherche, publiés ou non, émanant des établissements d'enseignement et de recherche français ou étrangers, des laboratoires publics ou privés.

Preliminary MRI Quality Assessment and device acceptance guidelines for a Multicentre Bio-clinical Study: the GO Glioblastoma Project.

Sylvain Ollivro • Pierre-Antoine Eliat • Eric Hitti • Loan Tran • Jacques D. de Certaines • Hervé Saint-Jalmes

S. Ollivro • P.A. Eliat • E. Hitti • L. Tran • J.D. de Certaines • H. Saint-Jalmes (✉)

PRISM, Université Rennes 1, IFR 140/Biogenouest, 2 Avenue du Professeur Léon Bernard, Rennes, France

E-mail: herve.saint-jalmes@univ-rennes1.fr - phone: (33) 2 23 23 48 49

S. Ollivro • L. Tran • H. Saint-Jalmes

Cancéropôle Grand Ouest, Rennes, France

P.A. Eliat

IFR 140 (Institut Fédératif de Recherche 140 Génétique Fonctionnelle Agronomie et Santé), Université Rennes 1, Rennes, France

S. Ollivro • E. Hitti • H. Saint-Jalmes

INSERM, Université Rennes 1, U642, Laboratoire Traitement du Signal et de l'Image, Rennes, France

J.D. de Certaines • H. Saint-Jalmes

CRLCC, Centre Eugene Marquis, Rennes, France

S. Ollivro • P.A. Eliat • E. Hitti • L. Tran • J.D. de Certaines • H. Saint-Jalmes

Université Européenne de Bretagne, Rennes, France

Abstract

It is a major challenge to guarantee homogeneous acquisition during a prospective multicentre MRI study which makes use of different devices. The goal of the multicentre Grand Ouest Glioblastoma Project was to correlate MRI quantitative parameters with biological markers extracted from image-guided biopsies. Therefore, it was essential to ensure spatial coherence of the parameters as well as the signal intensity and homogeneity. The project included the same MRI protocol implemented on six devices from different manufacturers. The key point was the initial acceptance of the imaging devices and protocol sequences. For this purpose, and to allow comparison of quantitative patient data, we propose a specific method for quality assessment. A common quality control based on 10 parameters was established. Three pulse sequences of the clinical project protocol were applied using three test-objects. A fourth test-object was used to assess T1 accuracy. Although geometry-related parameters, Signal-to-Noise Ratio, uniformity and T1 measurements varied slightly depending on the different devices, they nevertheless remained within the recommendations and expectations of the multicentre project. This kind of quality control procedure should be undertaken as a prerequisite to any multicentre clinical project involving quantitative MRI and comparison of data acquisitions with quantitative biological image-guided biopsies.

Keywords

MRI • Quality Assessment • Multicentre Study • Test-objects

Introduction

Quality-assessment (QA) protocols are now routinely applied to clinical Magnetic Resonance Imaging (MRI) devices. There are usually two main issues involved in QA: checking installation of the new device and longitudinal follow up of MRI system performances. In most cases, these QA procedures are manufacturer-specific, so they cannot be used for multicentre projects involving multiple MRI systems from different manufacturers and operated on different sites. To harmonize test methods, several groups (AAPM, NEMA and COMAC-BME) [1-9] have proposed QA protocols for MRI. The purpose of these longitudinal QA protocols is to monitor the performances of the MRI device [10-14]. Stable technical parameter values lying within the tolerance limits ensure that high-quality reproducible images can be obtained.

The goal of the multicentre Grand Ouest Glioblastoma Project (GOGP) [15] was to correlate MRI quantitative parameters with biological markers extracted from stereotactic image-guided biopsies. Glioblastoma multiforme, the most frequent primary tumour of the central nervous system, remains one of the most lethal human cancers despite intensive research. Analysis of glioblastoma intra-tumour heterogeneity is an original approach since this aspect could provide a key to understanding the origin and recurrence of glioblastoma. The project aims to utilize existing methods such as Dynamic Contrast Enhancement MRI (DCE-MRI) or Texture Analysis, which are able to delimit the boundaries of four different sectors (the necrosis, the tumour, the interface between tumour and parenchyma, isolated infiltrated cells in normal parenchyma) (see Fig. 1). These methods were used in a specific and comparative study of glioblastoma cells belonging to these four sectors in the same patients, using global as well as more specialized approaches (for instance, apoptosis and glioma metabolism) based on the competences of the research consortium involved. The imaging, mechanistic, genomics and proteomics data were correlated to assess their respective

contributions to understanding the growth and recurrence of the tumour. The project was organized into four inter-related Work Packages (WP): WP1: Tumour heterogeneity and margin by quantitative MRI, WP2: Isolation of the different cell populations by primocultures from peroperative computer-guided biopsies, WP3: Genomic and proteomic comparative studies of the four cell populations extracted from four sectors of the glioblastoma, WP4: Comparative biological studies of the cell populations.

For The WP1 of the GOGP including a common MRI protocol implemented on six different MRI devices, a key point is the initial acceptance of imaging devices and sequences. For this purpose, and to allow comparison of quantitative patient data [14], we employed a specific common protocol for device acceptance based on MRI quality assessment. We included 6 different MRI devices located at 6 hospital units up to 300 km apart. The aim of this WP was to find new imaging parameters obtained with non-invasive methods to highlight the heterogeneity of the glioblastoma and enhance the prognostic grading. Several groups have attempted to characterize intracranial tumour tissue with various MRI-MRS parameters such as relaxation time [16, 17], Contrast-Enhanced Dynamic MR Imaging [18], diffusion MRI [19, 20] and *in vivo* MRS [21,22]. These previous approaches were usually seldom coordinated in multicentre studies to establish correlations between parameters extracted from imaging and data from mechanistic, genomic and proteomic analyses. In the present WP, the imaging biomarkers need to be correlated with biological biomarkers extracted from biopsies. Such a programme involves a common acquisition and image processing protocol, which makes it possible to compare images obtained at the different sites and extract quantitative parameters. Moreover, it remains to be established whether these parameters and image-guided biopsy samples refer to the same spatial coordinates. Then, we require quality assessment of the MRI systems to check that the instruments have homogenous and stable characteristics, thus enabling inclusion of patient data in the multicentre project.

Materials and methods

MR Imaging systems

Our study included six different 1.5T MRI devices from three manufacturers (Siemens Medical Solutions, Erlangen, Germany; Philips Medical Systems, Best, Netherlands; General Electric, Milwaukee, USA). These MRI devices were located at six different centres, which needed to participate in data collection over a period of two years. Different radiofrequency head coils were used according to the site. In the following, we refer to the imagers using letters from A to G. Imagers A, E and G were made by the same manufacturer as C, D and F. During the GOGP test period, because of obsolescence, device E was replaced by device F on one site. To allow acceptance of MRI devices in the multicentre project, a QA was performed on each site. A second QA for verification was carried out on some sites. There were two controls on imagers A, B, D and G, and one control on imagers C, E and F.

MR Imaging sequences

The GOGP protocol includes routine imaging sequences as well as specific sequences. Using this protocol, we selected the sequences needed for the quantification of tumour heterogeneity: i) T1W (SE for GE, Philips and Siemens); ii) T2W (Fast Spin Echo for General Electric and Turbo Spin Echo for Philips and Siemens) contrast spin echo sequences acquired for texture analysis purposes [23], which can provide new information not detectable by the radiologist; iii) T1 contrast gradient echo (Spoiled Gradient echo for General Electric, Fast Field Echo-T1 for Philips and FLASH for Siemens) with a 90° flip angle (DYN90) as used for DCE-MRI. This technique allows the calculation and parametric mapping [22] of the fractional vascular, interstitial and cellular volumes of glioblastomas and iv) another set of T1 contrast spin echo sequences with multiple repetition times (T1SE-Multi TR) was included in the QA to validate T1 measurements and physiological parameters extracted from DCE-MRI

data. Other imaging parameters are listed in Table 1. All user accessible filters except for the uniformity one were disabled. For these acceptance tests, all acquisitions were performed in the axial-transverse direction, as this is the slice orientation mainly used for the GOGP protocol. For the image-guided biopsy, two different software applications were used: Brainlab (Feldkirchen, Germany) for sites A, E, F and G, and Medtronic Inc (Minneapolis, USA) for sites B, C and D.

Test-Objects and Image Analysis (see supplementary data 1 for a complete description)

The SpinSafety® test-objects (Spin Safety Ltd, Rennes, France) is a commercially available version of the Eurospin test-objects previously described [1]. The same set of four test-objects was used at the six imaging centres. The GOGP imaging protocol for each patient included dynamic acquisition and T1 measurements using 6 reference tubes containing solutions with known T1s covering values encountered in the brain. Each site received a set of six such tubes. During the GOGP imaging protocol, these tubes were placed around each patient's head (see Fig. 1a) and used as an external reference for T1 correction. During the QA protocol, these tubes were imaged along with the TO4 (see Fig. 1b).

The measurement protocol was developed in accordance with the Eurospin Methods for determining the parameter values following the published recommendations [1, 2, 3, 7, 8, 9]. The total acceptance protocol time for each imager was approximately 2h30 min.

All images were examined by the same QA expert and reported on Excel spreadsheets. Student t-test for the conformity study and Analysis of Variance (ANOVA) were used to obtain statistical data. Reproducibility and repeatability were determined according to the ISO 5725 standard.

MRI devices acceptance guidelines.

To our knowledge, no international guidelines have yet been proposed for the acceptance criteria of MRI devices in such a protocol. Such guidelines would be too dependent on the specific goal of the study. However, based on the few previous studies [12, 25, 26, 27, 28, 29] and as a compromise between technical limitations and optimal requirements under clinical condition, we decided on the following acceptance guidelines for the GOGP based on the 10 selected parameters. We wished to attain an accuracy of around 1 mm for the geometrical parameters to enable a good positioning during neuronavigation. Therefore, the acceptable errors on the geometrical parameters must be in agreement with the values listed on Table 2. These geometrical data are globally better than the mean clinical positioning errors quoted in the literature [25], which range from 1 mm with implantable fiducial markers and point-pair matching to 5 mm with surface matching, while both are measured when redundant fiducial markers are used [25]. To allow a good quantification of the tumour heterogeneity using the DCE-MRI and texture analysis, the signal variations must be as small as possible: 5% of variation seems to be a good compromise. The SNR is a key parameter for the subsequent T1 measurement procedure, which is needed to compute the dynamic contrast enhancement parameters used by the GOGP. Hence, we developed a Monte Carlo simulation under Mathematica® (version 5.1; Wolfram Research, IL, USA) to propagate the noise [30] measured on images to the errors on computed T1 values. The Monte Carlo simulations of the spoiled gradient echo sequence were ran 10 000 times with the addition of random Gaussian noise. The T1 values were computed from the signal equation [31], and the standard deviation on T1 expressed in seconds over the 10 000 runs. Standard deviation of T1 expressed in percentage is plotted against SNR in the range of 25 to 250 and for T1 values ranging from 0.1 to 2 s (see Fig. 5). Considering a maximum T1 of 2s, the simulation shows that a relative error less than 10% on T1 measurement is obtained with a

minimum SNR of 75. Such a relative error is acceptable [14] for the subsequent dynamic quantification procedure.

Results

Table 3 summarizes the main results for the three representative sequences (T2W, T1W and DYN90) of the protocol, reporting the means and standard deviations of the parameter values.

Geometry-related parameters

Spatial resolution (SR) was analysed with an ANOVA test using the sequence as a between-subjects factor (i.e., T2W, T1W and DYN90). We observe no consistent main effect according to the sequences, with means of 0.93, 0.96, and 1.06 for the T2W, T1W and DYN90, respectively. The Student t-test also indicates that spatial resolution measurements are close to the theoretical value of 0.94 mm. Furthermore, as can be seen on Table 4, the results on each device do not exceed our acceptable errors.

Slice thickness (ST) was analysed with an ANOVA test using the sequence as a between-subjects factor (i.e., T2W, T1W and DYN90). We observe a consistent main effect according to the sequences, with means of 5.2 mm, 5.0 mm and 5.8 mm for the T2W, T1W and DYN90, respectively, $F(2, 30) = 12.9$, $p < 0.0001$. The Student t-test also indicates that slice thickness measurements, except for sequence DYN90, are close to the theoretical value of 5 mm, with $p \leq 0.001$. We note that, for this last sequence, the slice thickness is often greater than the acceptable error of our clinical study (Table S2, supplementary data 2).

The other parameters (slice position SP, mean diameter GD1, diameter distortion rate GD2, square side GD3 and diagonal distortion rate GD4) are constant over the sequences and close to the theoretical values. For example, as presented in Table supplementary data 2 S3, mean diameters measured during the quality assessment show a maximum distortion of 2 mm.

This is slightly more (0.1mm) than our acceptable error. The Student t-test also indicates that mean diameter measurements are close to the theoretical value of 190 mm.

MR signal-related parameters

Figure 3 presents the detailed results of measurements on each MRI system (A to G) using the three sequences, yielding SNR values ranging from 76 to 296. The mean SNR ranges from 203 in the case of T2W to 154 in the case of DYN90. The signal variations on frequency (SVF) and readout (SVR) directions (see Table 2) are less than 5%.

Calculated T1

In this study, we analysed the T1 measurements of TO4 and the external reference tubes. As with the other tests, the same TO4 was used at each site. Table 5 reports the mean T1, T1 repeatability and reproducibility variation coefficients for each tube. These statistical data show that the repeatability variation coefficient ranges from 8.9% to 11.4%, and the reproducibility variation coefficient from 7.4% to 13.3%.

The reproducibility of the external reference tubes was also checked. As an example, Fig. 4 gives the results of measurements for one of these tubes taken one year apart at the 6 centres. On this graph, we show the two T1 measurements and the mean T1 for each site. We can see that the general mean for this external reference tube is 416 ms and the reproducibility standard deviation is 24 ms.

Discussion

In the context of a multicentre clinical study (the GOGP), we have developed a protocol to check 10 parameters from signal and geometry-related parameters and T1 assessment. This protocol was disseminated over 6 sites equipped with 1.5T machines from three different manufacturers.

The precise positioning of the phantom in the transverse plane is not an issue since a marker is printed on each object so it can be precisely aligned with the laser of the MRI unit. In this study, we restrict ourselves to transverse acquisitions, while, in common clinical protocols, the imaging of sagittal or coronal incidence is mainly used, which can also be checked through a QA procedure. However, this latter approach would require a time consuming procedure lasting more than three hours, which is difficult to carry out on clinical sites. Moreover, our goal is not to develop a QA procedure to test the machine but rather to enable the inclusion of patient data in a specific clinical protocol. We chose transverse incidence because most of the acquisitions of the GOGP are of this type. The choice of pulse sequence to be used in QA is also dictated by the clinical protocol, which depends mainly on spin echo T1, turbo spin T2 and dynamic T1 Gradient echo acquisitions.

The results of the QA for geometrical parameters are accurate to around 2 mm, which allows a acceptable positioning of the biopsy region by neuronavigation imaging. Distortion results are comparable, being relatively small and independent of the pulse sequences, as shown by the standard deviation values. When comparing the slice thickness results between sequences, DYN90 yields the worst results. Nevertheless, the significantly increased slice thickness compensates for the inherently lower SNR of this short imaging time sequence (less than 30 s), at the expense of the partial volume effect.

The SNR obtained for the DYN90 is again lower than the SNR for the T1W and T2W sequences. During the QA procedure, we obtained a mean measured SNR of 154 for the DYN90 sequence, which corresponds to a maximum error on T1 of 0.02 s and 0.08 s, for T1 values of 1 s and 2s, respectively (See Figure 5). This represents a relative error on the computed T1 of less than 4%, which is acceptable [14] for the subsequent dynamic quantification procedure. It should also be noted that, because we make use of a ratiometric

method [31], the frequency and phase signal variations do not influence these T1 computations.

Moreover, T1 measurements have a good precision in terms of reproducibility and repeatability. This level of precision is mandatory in the T1 measurement procedure of the WP1, since it enables a comparison of the dynamic contrast enhancement parameters obtained at the six centres.

Our choice of sequences for the QA was guided by two principles: first, to have simple sequences that were sufficiently standardized to be implemented without too much difficulty on each device, even from different manufacturers, and, second, to stay as close as possible to the real sequences used in the clinical research protocol we wanted to assess.

The time required for these tests (2h30 for a single control procedure) is not easily available on clinical machines for monthly follow-up throughout the protocol duration (two years for GOGP). One solution could be to shorten the procedure by removing the T1 measurements, which take about 1 hour, and also reduce the number of tested sequences. Performing this “light” procedure lasting about 15 minutes could be used on each system to check the main geometrical parameters and signal-to-noise ratio on a monthly basis during the duration of the project. Another time-consuming task is processing all the data gathered during each QA procedure, which takes about 16 hours. In our study, processing was performed manually, which could lead to possible errors. An automatic analysis and report procedure could avoid this source of errors as well as reduce the amount of time needed for the analysis.

Conclusions

In conclusion, quality assessment testing is mandatory in any clinical research project involving quantitative MRI. In the GOGP protocol, we used six machines from different manufacturers set up on different sites. We propose a method for quality assessment based on

the main pulse sequences of the GOGP clinical protocol using four test-objects to assess geometry, SNR, uniformity parameters and T1 measurements. As a result of these different QA tests, we were able to include patients from the different sites and extract tumour quantification parameters that are comparable irrespective of the origin of the images. In addition, we could make sure that the extracted MR parameters and image-guided biopsy samples referred to the same spatial coordinates. It should be mandatory to generalize the application of this kind of QA procedure from the outset of a multicentre clinical project.

Acknowledgments

The study was supported by “Cancéropôle Grand Ouest” and “Institut National du Cancer” grants. We gratefully acknowledge the “Centre Hospitalier Universitaire” of Angers, Brest, Nantes, Rennes, Poitiers, Tours and the “Centre Hospitalier” of Orléans. SO and LT were supported by a financial grant from Région Bretagne. M.S.N. Carpenter post-edited the English style.

References

1. EEC concerted research project: protocols and test objects for the assesment of MRI equipment. *Magn Reson Imaging*. 1988;6:195-199
2. Lerski RA, McRobbie DW, Straughan K, et al. Multi-center trial with protocols and prototype test objects for the assessment of MRI equipment. *Magn Reson Imaging*. 1988;6:201-214
3. Lerski RA, De Certaines JD. Performance assessment and quality control in MRI by Eurospin test objects and protocols. *Magn Reson Imaging*. 1993;11:817-833

4. Price RR, Axel L, Morgan T, et al. Quality assurance methods and phantoms for magnetic resonance imaging: report of AAPM Nuclear Magnetic Resonance. Task Group No. 1a. *Med Phys.* 1990;17:287-295
5. Lerski RA. Trial of modifications to Eurospin MRI test objects. *Magn Reson Imaging.* 1993;11:835-39
6. Och JG, Clarke GD, Sobol WT, et al. Acceptance testing of magnetic resonance imaging systems: report of AAPM Nuclear Magnetic Resonance Task Group No 6. *Med Phys.* 1992;19:217-229
7. National Electrical Manufacturers Association. Determination of signal-to-noise-ratio (SNR) in Diagnostic *Magnetic Resonance Imaging.* ACR-NEMA 2008
8. National Electrical Manufacturers Association. Determination of Two-Dimensional Geometric Distortion in Diagnostic Magnetic Resonance Images. ACR-NEMA 2008
9. National Electrical Manufacturers Association. Determination of Slice Thickness in Diagnostic Magnetic Resonance Imaging. Ref? Année? ACR-NEMA 2003
10. Ihalainen T, Sipilä O, Savolainen S. MRI quality control: six imagers studied using eleven unified image quality parameters. *Eur Radiol.* 2004;14:1859-1865
11. Colombo P, Baldassarri A, Del Corona M, et al. Multicenter trial for the set-up of a MRI quality assurance programme. *Magn Reson Imaging.* 2004;22:93-101
12. Firbank, M J, Harrison R M, Williams E D, et al. Quality assurance for mri : practical expérience. *BJR* 2000 ;73 :376-383.
13. Friedman L, G H Glover. Report on a Multicenter fMRI Quality Assurance Protocol. *J Magn Reson Imaging.* 2006;23:827-839
14. De Certaines JD, Henriksen O, Spisni A, et al. In vivo measurements of proton relaxation times in human brain, liver, and skeletal muscle: a multicenter MRI study. *Magn Reson Imaging.* 1993;11:841-850

15. Cancéropôle Grand Ouest. Grand Ouest Glioma Project: from the core to beyond the margin. France, 2005
16. Kjaer L, Thomsen C, Gjerris F, et al. Tissue characterization of intracranial tumours by MR imaging. In vivo evaluation of T1 and T2 relaxation behavior at 1.5T. *Acta Radiol.* 1991;32:498-504
17. De Certaines JD. Measurement and meaning of relaxation times: specific and non-specific variations in cancer. *Ann Ist Super Sanita.* 1983;19:107-120
18. Zhu XP, Li KL, Kamaly-Asl ID, et al. Quantification of endothelial permeability, leakage space, and blood volume in brain tumours using combined T1 and T2* contrast-enhanced dynamic MR imaging. *Magn Reson Imaging.* 2000;11:575-585
19. Beppu T, Inoue T, Shibata Y, et al. Fractional anisotropy value by diffusion tensor MRI as a predictor of cell density and proliferation activity of glioblastomas. *Surgical Neurology.* 2005;63:56-61
20. Moffat BA, Chenevert TL, Lawrence TS, et al. Functional diffusion map: A noninvasive MRI biomarker for early stratification of clinical brain tumour response. *PNAS.* 2005;102:5524-5529
21. Croteau D, Scarpace L, Hearshen D, et al. Correlation between Magnetic Resonance Spectroscopy Imaging and Image-guided Biopsies: Semiquantitative and Qualitative Histopathological Analyses of Patients with Untreated Glioma. *Neurosurgery.* 2001;49:823-829
22. Rock JP, Hearshen D, Scarpace L, et al. Correlations between magnetic resonance spectroscopy and image-guided histopathology, with special attention to radiation necrosis. *Neurosurgery.* 2002;51:912-920
23. Herlidou-Même S, Constans JM, Carsin B, et al. MRI texture analysis on texture test objects, normal brain and intracranial tumours. *Magn Reson Imaging.* 2003;21:989-993

22. Tofts PS, Brix G, Buckley DL, et al. Estimating Kinetic parameters from dynamic contrast-enhanced T1-weighted MRI of a diffusible tracer: standardized quantities and symbols. *Magn Reson Imaging*. 1999;10:223-232
23. Wang D, Doddrell M. Geometric Distortion in Structural Magnetic Resonance Imaging. *Current Med Imag Reviews*. 2005;1:49-60
24. National Electrical Manufacturers Association DICOM website. Available at: <http://medical.nema.org/> Accessed July 31, 2010
25. Novotny J. Jr, Novotny J., Vymazal J., Liscak R., Vladyka V. Assessment of the accuracy of Stereotactic Target Localization using MRI: a phantom study. *J.of Radiosurgery*,1998; 1 (2), 99-111.
26. Collewet G, Strzeleck M, Mariette F, Influence of MRI acquisition protocols and image intensity normalization methods on texture classification, *Magn. Reson. Imaging*, 2004, 22, 81-91.
27. Mahmoud-Gonheim D, Alkaabi MK, de Certaines JD, Goettsche FM, The impact of image dynamic range on texture classification of brain white matter, *BMC Medical Imaging*,2008, 8 (18).
28. Novotny J Jr, Vymazal J, Novotny J, Tchalacova D. et al., Does new MRI technology provide better geometrical accuracy during stereotactic imaging?, *J Neurosurg (Suppl)* 2005, 102, 8-13.
29. Willems PWA, Berkelbach van der Sprenkel JW, Tulleken CAF, et al. *Neuronavigation and surgery of intracerebral tumours*. *J Neurol* 2006;253:1123-1136
30. Tofts PS. Quantitative MRI of the brain. Tofts PS, editor. Institute of Neurology, University College London, 2004. p. 68-69.

31. Eliat PA, Dedieu V, Bertino Catherine, et al. Magnetic resonance imaging contrast-enhanced relaxometry of breast tumours: an MRI multicenter investigation concerning 100 patients. *Magn Reson Imaging*. 2004;22:475-481

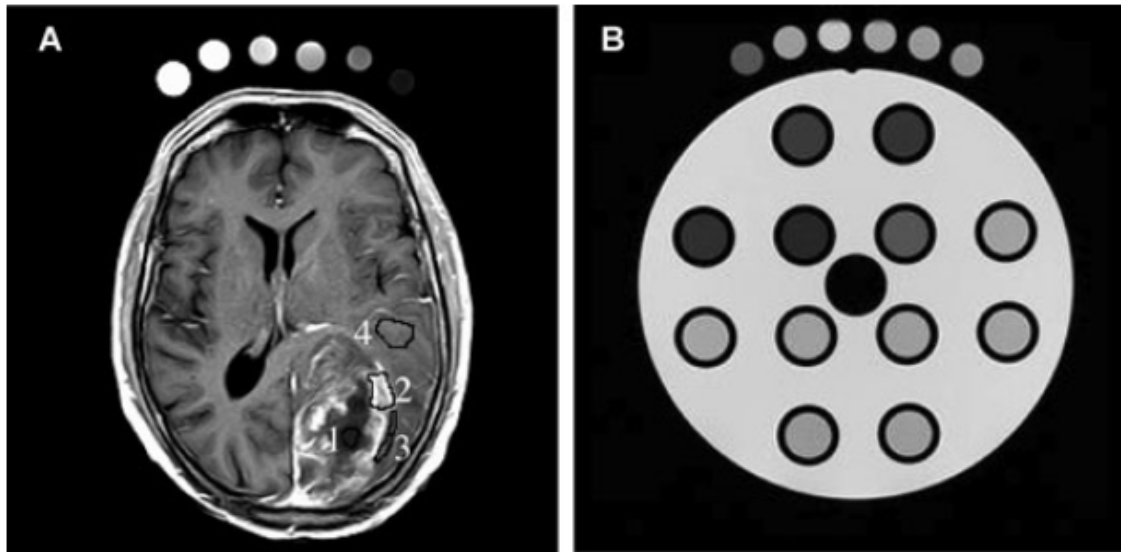


Fig. 1 Fig 1. (A) Postcontrast brain MR image from T1 dynamic series in axial plane. The four regions of the glioblastoma are labeled: (1) necrosis, (2) tumor, (3) interface between tumor and parenchyma, (4) isolated infiltrate cells in a normal parenchyma. (B) TO4 and a set of six tubes.

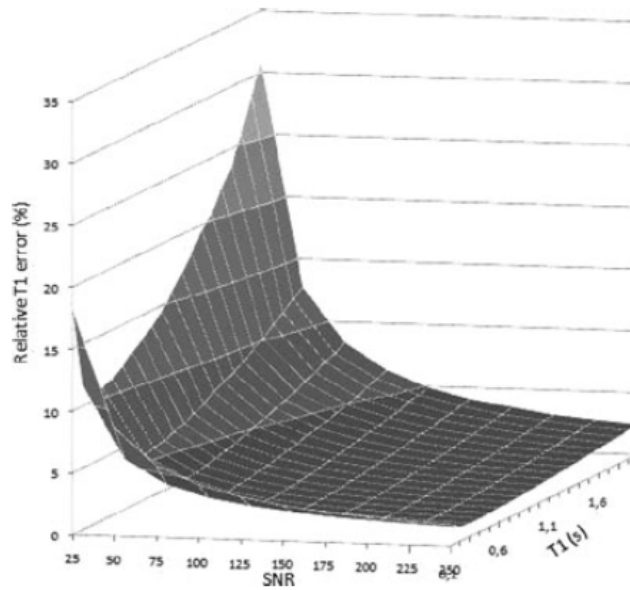


Fig. 2. Relative T1 error plotted against SNR and T1 values for the Dyn90 sequence.

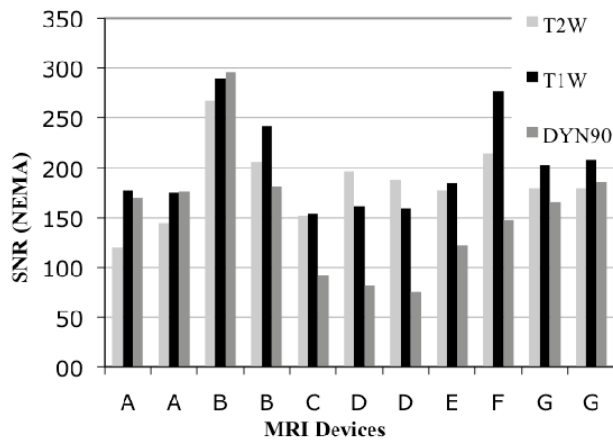


Fig. 3 SNR in different MRI Devices for T2W, T1W and DYN90 sequences

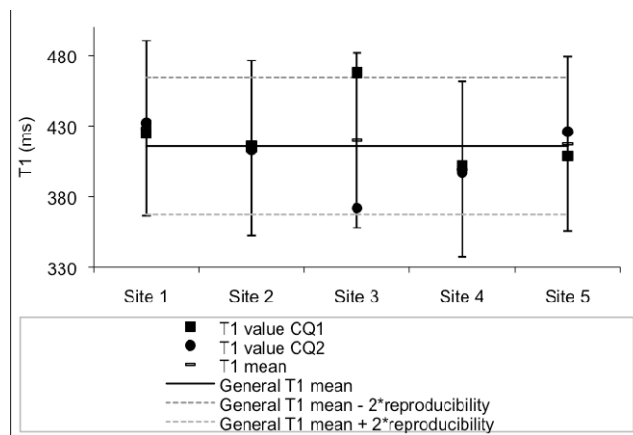


Fig.4 Statistical data for an external reference tube

Table 1. Imaging acquisition parameters. Slice thickness is 5 mm in all sequences

Sequences	TR (ms)	TE (ms)	FOV (mm)	Matrix	Averages	Nb slices	Gap (mm)	Echo train
DYN90	150	5.6	180x240	192x256	1	13	0.5	-
T2W	3000	80	240x240	256x256	2	24	1	18
T1W	440	10	240x240	256x256	2	24	1	-
T1SE-Multi TR	50-100-200-350-750-1000-1500-3000-6000	10	240x240	256x256	1	1	-	-

TR: Repetition Time. TE: Echo Time. FOV: Field Of View.

Table 2. Acceptable errors for T2W, T1W and DYN90 sequences

Parameters	Acceptable Errors
SNR	≥ 75
Frequency signal variations (%)	5%
Phase signal variations (%)	5%
Spatial resolution (0.94 mm)	50%
Slice thickness (5 mm)	20%
Mean diameter (190 mm)	1%
Diameter distortion (%)	1%
Square side distortion (%)	1%
Diagonal Distortion (%)	1%
Slice Position (gap in mm) 1, 0.5*	20%

Table 3. Mean parameter values, standard deviations for T2W, T1W and DYN90 sequences

Parameters	T2W		T1W		DYN90	
	Mea	Std	Mea	Std	Mea	Std
	n		n		n	
SNR	203	45	184	37	154	59
Frequency signal variations (%)	3.8	2.6	4.5	2.6	3.9	2.7
Phase signal variations (%)	3.7	2.7	3.6	2.7	2.7	2.7
Spatial resolution (0.94 mm)	0.93	0.15	0.96	0.15	1.06	0.21
Slice thickness (5 mm)	5.2	0.3	5.0	0.1	5.8	0.5
Mean diameter (190 mm)	189.	0.6	189.	0.6	189.	0.8
	7		7		8	
Diameter distortion (%)	0.6	0.2	0.5	0.2	0.6	0.2
Square side distortion (%)	0.3	0.3	0.2	0.3	0.3	0.3
Diagonal Distortion (%)	0.3	0.3	0.3	0.3	0.2	0.2
Slice Position (gap in mm) 1, 0.5*	0.92	0.15	0.93	0.15	0.51	0.15
					*	

Table 4. Spatial Resolution in mm for the 3 sequences of each MRI device.

MRI Device	Spatial Resolution – theoretical value= 0.94 mm		
	T2W	T1W	DYN90
A	0.83	0.86	0.94
B	0.85	0.87	0.92
C	0.94	0.91	0.93
D	0.96	0.94	0.94
E	0.75	0.83	1.04
F	0.90	0.98	1.16

Tubes	T1 (ms)	Repeatability Variation Coefficient (%)	Reproducibility Variation Coefficient (%)
1	119	9.3	10.8
2	118	8.9	9.9
3	113	10.4	13.3
4	117	9.1	10.8
5	163	10.3	10.1
6	356	9.6	9.3
7	451	10.0	9.7
8	757	11.4	9.6
9	687	9.0	7.6
10	787	9.7	9.4
11	1,013	9.1	7.4
12	731	10.3	8.3

Table 5. T1 Mean Values, Repeatability, and Reproducibility Variation Coefficients for Each Tube of TO4

Supplementary data 1

Test-Objects

The SpinSafety® test-objects (Spin Safety Ltd, Rennes, France) is a commercially available version of the Eurospin test-objects previously described [1]. The same set of four test-objects was used at the six imaging centres. They were filled with a dilute solution of copper sulphate to obtain a T1 of 350 ms at 1.5T and 25°C. Figure S1 presents the transverse MRI slice images of the test-objects. Parameters measured with SpinSafety Test-Object 1 (TO1) and TO4 were considered to control the quality of GOGP sequences used for T1 measurements and quantification, whereas TO2 and TO3 were considered to control the quality of spatial localization and geometry distortions of sequences used for neuronavigation and MRI-guided biopsies [23]. TO1 is a homogeneous cylinder designed to be used for the measurement of signal-related parameters. TO2 is dedicated to the measurement of geometrical parameters; it contains two angled plates and two wedges for measuring slice thickness, two Polymethyl Methacrylate blocks for measuring spatial resolution and four plates in square form used for measuring square and diagonal distortions. TO3 contains two rods used for estimating slice position. TO4 contains 12 tubes filled with solutions having different T1 and T2 relaxation times (see Table S1). The GOGP imaging protocol for each patient included dynamic acquisition and T1 measurements using 6 reference tubes containing solutions with known T1s covering values encountered in the brain. Each site received a set of six such tubes. During the GOGP imaging protocol, these tubes were placed around each patient's head (see Fig. 1) and used as an external reference for T1 correction. During the QA protocol, these tubes were imaged along with the TO4 (see Fig. S1d).

The measurement protocol was developed in accordance with the Eurospin Methods for determining the parameter values following the published recommendations [1, 2, 7, 8, 9]. The four TOs were positioned in a transverse plane at the centre of the head coil. The ten parameters under examination were: signal variations along frequency encoding direction, signal variations along phase encoding direction, Signal-to-Noise Ratio (SNR), slice thickness, slice position, spatial resolution,

mean diameter, circle diameter distortion, square side and diagonal distortions and T1 accuracy (see Table 3). For the three sequences of the protocol (T1W, T2W and DYN90), all these parameters were determined in a transverse plane, using the appropriate TO. Measurement of T1 of the TO4 and the set of six reference tubes was performed with the T1SE-Multi TR. The total acceptance protocol time for each imager was approximately 2h30 min.

Image analysis

Images in DICOM [24] format were transferred by each site onto a central Work Station for processing. Signal variations along the frequency and phase encoding directions were calculated by tracing profiles on TO1 images [2]. SNR was obtained by multiplying the mean signal by the square root of 2 and dividing by the standard deviation of the subtracted image resulting from two successive TO scans [7]. Geometrical distortion in the image plane was determined by measuring the mean diameter, the diameter distortion rate, the square distortion rate and the diagonal distortion rate on the TO2. To determine the slice thickness, an intensity profile was measured through an angle plate of the TO3 to calculate the peak width [9]. 2D spatial resolution was obtained by measuring an intensity profile through a block in TO2. The resolution could then be calculated from the Modulation Transfer Function (MTF) [3]. The relative distance of the angle rods of the TO3 was used to obtain slice position. For T1 measurements, signals of the different tubes of TO4 at different repetition times (TR) were fitted to the signal equation of the saturation recovery method using the Solver Program of Microsoft Excel (version 2003, Microsoft Corporation, Seattle, USA). For one manufacturer, specific tools were developed to restore the initial image intensities needed for T1 measurements. The ImageJ software (W. Rasband, National Institutes of health, USA) was used to analyse all the images. All images were examined by the same QA expert and reported on Excel spreadsheets. Student t-test for the conformity study and Analysis of Variance (ANOVA) were used to obtain statistical data. Reproducibility and repeatability were determined according to the ISO 5725 standard.

Table S1. T1 and T2 values references for the tubes of the T04.

Tubes	T1 (ms)	T2 (ms)
1	119	9
2	118	10
3	112	9
4	117	9
5	166	13
6	353	56
7	450	64
8	779	83
9	706	77
10	787	98
11	1036	124
12	758	84

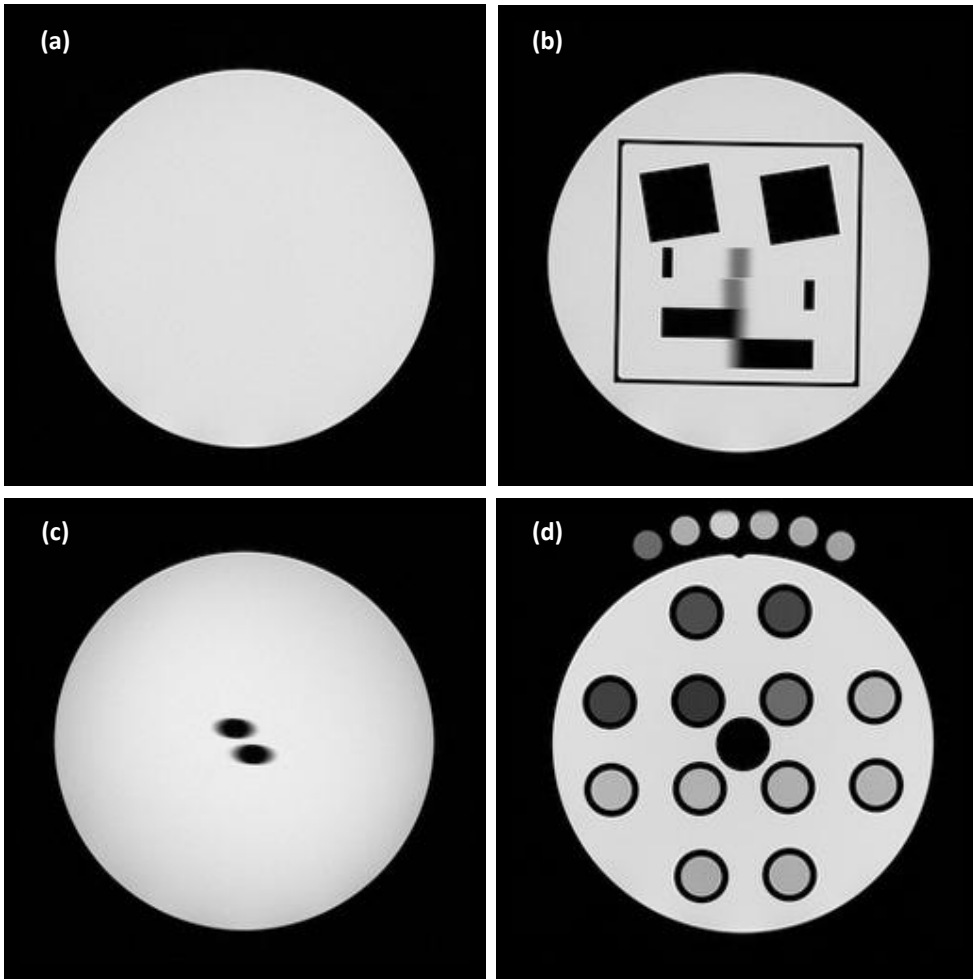


Fig. S1 Transversal MRI slice images of the Test Objects (a) TO1, (b) TO2, (c) TO3, (d) TO4 and a set of six tubes

Supplementary data 2

Parameter	Test Object
Frequency signal variations	TO1
Phase signal variations	TO1
SNR	TO1
Mean diameter	TO2
Diameter distortion	TO2
Square side distortion	TO2
Diagonal distortion	TO2
Slice thickness	TO2
Spatial resolution	TO2
Slice position	TO3
T1 accuracy	TO4

Table S1. Imaging assessment parameters

Table S2: Slice thickness in mm for the 3 sequences of each MRI device.

MRI Device	Slice thickness – theoretical value= 5.00 mm		
	T2W	T1W	DYN90
A	5	4.8	6.4
B	5.2	4.8	5.7
C	5	5	5.5
D	5.9	5.1	6.3
E	5.9	4.9	6.5
F	5.1	4.9	6.5

Table 8: Mean Diameter in mm for the 3 sequences of each MRI device.

Mean Diameter – theoretical value= 190 mm			
MRI Device	T2W	T1W	DYN90
A	189.1	189.6	189.6
B	190.3	190.1	190.2
C	189.8	189.9	190
D	190.3	189.8	190.1
E	189.7	189.5	189.8
F	189.0	188.9	188.0