



Impact of oral melatonin on the electroretinogram cone response.

Anne-Marie Gagné, Konstantin Danilenko, Serge Rosolen, Marc Hébert

► To cite this version:

Anne-Marie Gagné, Konstantin Danilenko, Serge Rosolen, Marc Hébert. Impact of oral melatonin on the electroretinogram cone response.. Journal of Circadian Rhythms, 2009, 7 (1), pp.14. 10.1186/1740-3391-7-14 . inserm-00663562

HAL Id: inserm-00663562

<https://inserm.hal.science/inserm-00663562>

Submitted on 27 Jan 2012

HAL is a multi-disciplinary open access archive for the deposit and dissemination of scientific research documents, whether they are published or not. The documents may come from teaching and research institutions in France or abroad, or from public or private research centers.

L'archive ouverte pluridisciplinaire **HAL**, est destinée au dépôt et à la diffusion de documents scientifiques de niveau recherche, publiés ou non, émanant des établissements d'enseignement et de recherche français ou étrangers, des laboratoires publics ou privés.

Research

Open Access

Impact of oral melatonin on the electroretinogram cone response

Anne-Marie Gagné¹, Konstantin V Danilenko², Serge G Rosolen^{3,4} and Marc Hébert*¹

Address: ¹Centre de Recherche Université Laval Robert-Giffard, Faculty of Medicine, Université Laval, Québec, Canada, ²Institute of Internal Medicine, Siberian Branch of the Russian Academy of Medical Sciences, Novosibirsk, Russia, ³Centre de Recherche - Institut de la Vision UMR S968, INSERM-UPMC Paris 6, Paris, France and ⁴Clinique Vétérinaire Voltaire, Asnières, France

Email: Anne-Marie Gagné - anne-marie.gagne@crulrg.ulaval.ca; Konstantin V Danilenko - kvdani@mail.ru; Serge G Rosolen - sg.rosolen@orange.fr; Marc Hébert* - marc.hebert@crchul.ulaval.ca

* Corresponding author

Published: 19 November 2009

Received: 31 July 2009

Accepted: 19 November 2009

Journal of Circadian Rhythms 2009, **7**:14 doi:10.1186/1740-3391-7-14

This article is available from: <http://www.jcircadianrhythms.com/content/7/1/14>

© 2009 Gagné et al; licensee BioMed Central Ltd.

This is an Open Access article distributed under the terms of the Creative Commons Attribution License (<http://creativecommons.org/licenses/by/2.0>), which permits unrestricted use, distribution, and reproduction in any medium, provided the original work is properly cited.

Abstract

Background: In the eye, melatonin plays a role in promoting light sensitivity at night and modulating many aspects of circadian retinal physiology. It is also an inhibitor of retinal dopamine, which is a promoter of day vision through the cone system. Consequently, it is possible that oral melatonin (an inhibitor of retinal dopamine) taken to alleviate circadian disorders may affect cone functioning. Our aim was to assess the impact of melatonin on the cone response of the human retina using electroretinography (ERG).

Methods: Twelve healthy participants aged between 18 to 52 years old were submitted to a placebo-controlled, double-blind, crossover, and counterbalanced-order design. The subjects were tested on 2 sessions beginning first with a baseline ERG, followed by the administration of the placebo or melatonin condition and then, 30 min later, a second ERG to test the effect.

Results: Following oral melatonin administration, a significant decrease of about 8% of the cone maximal response was observed (mean $6.9 \mu V \pm SEM 2.0$; $P = 0.0065$) along with a prolonged b-wave implicit time of $0.4 ms \pm 0.1$, 50 minutes after ingestion.

Conclusion: Oral melatonin appears to reach the eye through the circulation. When it is administered at a time of day when it is not usually present, melatonin appears to reduce input to retinal cones. We believe that the impact of melatonin on retinal function should be taken into consideration when used without supervision in chronic self-medication for sleep or circadian disorder treatment.

Background

Melatonin is a circulating hormone (N-acetyl-5 methoxytryptamine) produced mostly by the pineal gland at night [1]. Considering that melatonin feeds back to the suprachiasmatic nucleus (SCN), site of the internal clock, where melatonin receptors are also located [2], it is sug-

gested that melatonin may be a regulatory hormone of darkness for the SCN. Of interest, melatonin can also be suppressed by light exposure to the eyes not only in animals but also in humans [3]. Because the production of this hormone is "light sensitive", it is not surprising that it is also produced in the retina by the photoreceptors [4]

and that melatonin MT1 receptors have been localized in the mammalian eye including the human eye [5]. In fact, melatonin is produced by many structures of the eye including the lens [6], the iris, the ciliary body [7] and the lacrimal glands [8]. Moreover, there is strong evidence for the existence of an ocular circadian clock in mammals. This implies the possibility of interactions between retinal processes and the SCN, which could represent an important input in the control of circadian rhythms [9]. For example, it was found that the mouse retina possesses its own circadian clock and that it regulates the circadian pattern of melatonin secretion [10] albeit the latter appears to be also under partial control of the pineal gland [11]. Retinal melatonin appears to play a role in promoting light sensitivity at night and modulating many aspects of circadian retinal physiology such as rod disk shedding [12,13]. Beside melatonin, it has been shown in avian retina that dopamine is produced from specific amacrine cells [14] and in a circadian rhythm manner in the rat retina [15]. In various animal models, while melatonin production is known to increase during the night, dopamine production, triggered by light, is produced mostly during the day [16]. In rodents, these two retinal neuromediators appear to act as mutually inhibitory signals [17,18], so that when melatonin level is high dopamine level is low and when dopamine level is high melatonin level is low. Consequently, melatonin is thought to promote night vision (rod pathway)[19] whereas dopamine appears to promote day vision (cone pathway) [16].

Due to the close link between melatonin and the biological clock, studies have been performed to use it as a possible resynchronizing agent to treat jetlag [20] and sleep disorders with doses ranging from as low as 0.03 mg to as high as 85 mg [21]. Toxicity of melatonin administration on retinal health may, however, represent a concern since this hormone seems to impact the susceptibility to light-induced damage of rat's photoreceptors [22,23]. It could also disturb retinal functioning by interfering with normal dopamine levels necessary to enhance day vision. In fact, a study by Emser and colleagues [24] showed that oral administration of 10 mg of melatonin induces a cone response ERG decline in human. Because the latter study used only a single intensity and only a red flash to test cone function, we were interested in investigating the impact of melatonin on the ERG dynamics of the cone response over a wider range of intensities using conventional white light flashes that allows the production of a luminance response function from which retinal sensitivity can be determined.

Methods

Sample

The study was performed between January-February 2004 in Novosibirsk, Russia, in twelve participants (6 men and

6 women) aged between 18-52 years (mean \pm SEM: 33.4 \pm 4.0 y). All participants were in good general health, non smokers, with normal sleep habits and no transmeridian travel during the last two months. The study was approved by the Ethics Committee of the Institute of Internal Medicine SB RAMS. The participants were fully informed of the nature of the study, and informed consent was obtained.

Design

The study was composed of a placebo-controlled, double-blind, crossover, and counterbalanced-order design. The subjects were tested on 2 sessions separated by 2-7 days (median = 5 days). Each session lasted two hours beginning with a baseline electroretinography (ERG) followed by one of the two treatments (placebo or melatonin) then a second ERG. Half of the subjects began with the placebo whereas half began with 15 mg of melatonin (Natrol® Chatsworth, CA). On the second sessions, the baseline was repeated followed by the other treatment. All sessions were performed between 12:30 and 16:30.

Recording procedure

Upon their arrival at the laboratory, subjects were dilated with 0.5% Tropicamide to ensure maximal pupil dilation and kept in room light (\sim 100 lux) for at least 30 minutes before the baseline ERG recording. During this time Grass gold disk electrodes filled with Grass EC2 electrode cream were installed on the forehead (ground), external canthi (reference for each eye). Active eye electrodes were DTL fibers (Shieldex 33/9 Thread, Statex, Bremen, Germany) placed deep into the conjunctival bag as previously described [25].

The baseline ERG recording always started between 13:00-15:00 and began with a 20-min light adaptation period during which the subject was exposed to a rod saturating white light background of 32 cd·s·m⁻² (\sim 105 lux) delivered by a ganzfeld (Color Dome; Espion system, DIAGNOSYS LLC, Littleton, MA) in order to achieve full field stimulation. During that period, 10 bright flashes [intensity: 0.84 log cd·s·m⁻²] delivered at 1 hertz (Hz) were presented every 5 minutes to monitor light adaptation. After the 20th minutes of the light adaptation period, series of 10-20 flashes (1 Hz frequency) were presented at 7 decreasing intensities ranging from 0.39 log cd·s·m⁻² to -1.45 log cd·s·m⁻² (Table 1). Immediately after the end of the ERG protocol, subject took five melatonin (total of 15 mg) or placebo pills, and the same ERG protocol was repeated 30 min later. During this 30-min period, the subject was kept in room light (about 100 lux).

The white light flashes (10 μ sec in duration) were generated by a tungsten stroboscope driven by a PS22 stimulator (®Grass, Quincy, USA). The flash-evoked bio-potential

Table 1: Routine ERG protocol

Period	Time since start, min	Flash intensity, log cd·s·m ⁻²	N of flashes	Interval, sec.	Ganzfeld background, cd·s·m ⁻²
Adaptation	0	0.84	10	1	32
	5	0.84	10	1	32
	10	0.84	10	1	32
	15	0.84	10	1	32
	20*	0.84	10	1	32
Testing		0.39	10	1	32
		0.10	10	1	32
		-0.21	10	1	32
		-0.61	10	1	32
		-0.90	10	1	32
		-1.10	10-20	1	32
		-1.45	10-20	1	32

* The response obtained at the 20th minute represents the end of the light adaptation and the beginning of the testing period

of the retina was recorded with a band pass of 1-1000 Hz, with an amplification of $\times 10\,000$ times (BIOPAC amplifiers) and averaged on-line by means of AcqKnowledge 3.7.2 software (RC Electronic Inc., USA).

Analysis

The typical cone ERG waveform is composed of a negative component called the a-wave followed by a positive component called the b-wave [26]. By convention, the a-wave implicit time is measured from the stimulus onset to the minimum voltage (trough) of the waveform deflection whereas the b-wave implicit time is measured from the stimulus onset to the maximum voltage (peak) of the waveform inflexion. The a-wave amplitude was measured from baseline to trough, and the b-wave from the trough of the a-wave to the peak of the b-wave. Each b-wave amplitude were then plotted against flash intensities in order to generate the luminance response function from which log K parameter was derived [25]. Vmax represents the ERG maximum b-wave amplitude observed on the data points used to generate the luminance response function whereas log K parameter, which is interpreted as retinal sensitivity, represents the flash intensity necessary to achieve half of Vmax amplitude. Finally, oscillatory potentials (OPs; wavelets observed on the ascending

branch of the b-wave) were extracted from the maximal ERG response (Vmax) by bandpassing off-line the waveforms between 100-500 Hz. Artifact-free responses (e.g blinks) from the two eyes were averaged prior to analysis.

Analysis of variance for repeated measures (rANOVA) was used to assess the effect of Treatment (melatonin vs. placebo) and Time (before vs. after) on the following ERG parameters: Vmax, a-wave and b-wave amplitude and implicit time, log K and sum of OPs. When the rANOVA yielded a positive result (Huynh-Feldt's corrected $P < 0.05$), the significant differences were analysed with Student's paired *t*-test. Mean values are accompanied with the standard errors of the means (\pm SEM).

Results

Figure 1 shows an example of waveforms obtained before and after melatonin administration during adaptation and testing period at every intensity. In Figure 2, the mean ERG b-wave amplitudes obtained from our protocol are plotted against intensities. It can be seen that data before and after the placebo appear identical, whereas data before and after melatonin appear different for: 1) both the single intensity recorded during the light adaptation period and 2) for the first three highest intensities of the

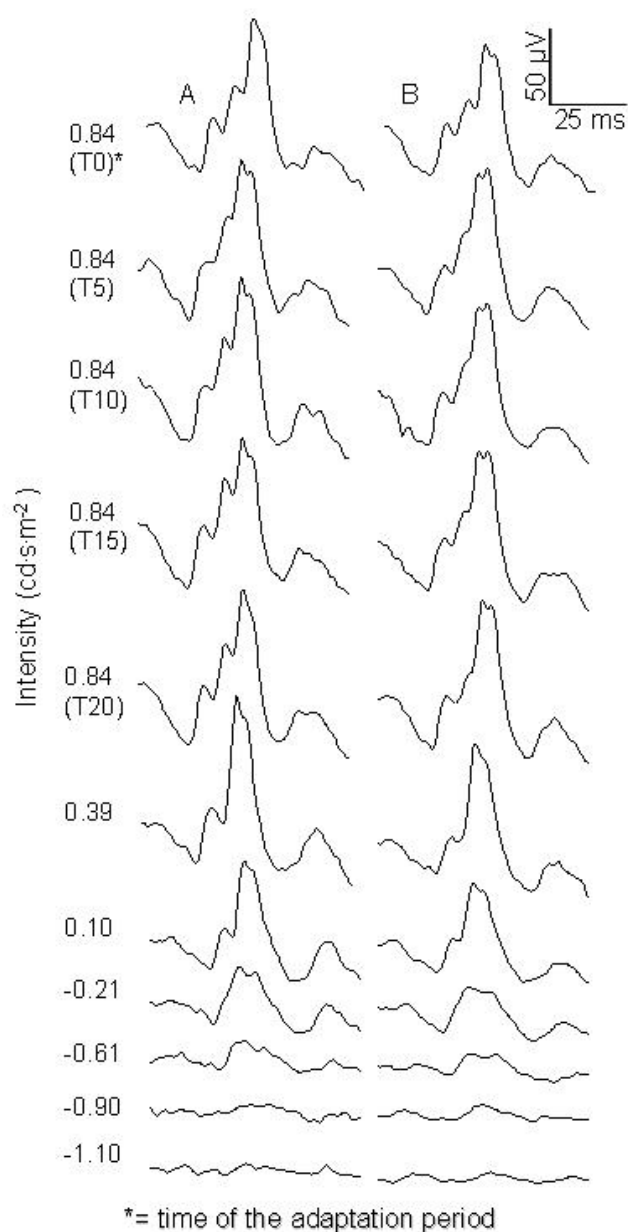


Figure 1
Raw ERG waveforms obtained from a male (18 y.o)
before (A) and after (B) melatonin administration
during adaptation and testing period.

luminance response function. For the adaptation period, rANOVA revealed a significant Treatment by Time interaction for b-wave amplitude ($F_{1,11} = 14$, $P = 0.0032$), b-wave implicit time ($F_{1,11} = 7.1$, $P = 0.022$) and a-wave implicit time ($F_{1,11} = 6.8$, $P = 0.025$). Post-hoc at times 0, 5, 10 and 15 minutes after the beginning of the light adaptation period are presented at Table 2. The b-wave amplitude was

significantly decreased after melatonin administration at T0 ($7.9 \mu V \pm 1.9 \mu V$), T10 ($7.7 \mu V \pm 1.8 \mu V$) and T15 ($8.5 \mu V \pm 2.2 \mu V$). This corresponds to a decrease of 10%, 9% and 10% respectively. Also, a significant increase in the b-wave implicit time after melatonin ingestion was found at T10 only ($0.4 \text{ ms} \pm 0.2 \text{ ms}$). A-wave implicit time was also significantly longer at T0 and T10. No significant result was found after placebo administration at any adaptation times, for any parameter.

For the luminance response function beginning at T20 of the light adaptation period (see Figure 2), rANOVA revealed a significant Treatment by Time Interaction for b-wave amplitude at intensity $0.84 \log \text{ cd} \cdot \text{s} \cdot \text{m}^{-2}$ ($F_{1,11} = 5.2$, $P = 0.043$), $0.39 \log \text{ cd} \cdot \text{s} \cdot \text{m}^{-2}$ ($F_{1,11} = 12.4$, $P = 0.0048$) and $0.1 \log \text{ cd} \cdot \text{s} \cdot \text{m}^{-2}$ ($F_{1,11} = 22.4$, $P = 0.0006$). Student post-hoc tests are presented at Table 2, revealed that melatonin administration diminished the amplitude by 6.2% ($5.2 \mu V \pm 1.7 \mu V$), 7.5% ($6.3 \mu V \pm 2.1 \mu V$) and 9.6% ($5.8 \mu V \pm 1.3 \mu V$) at 0.84 , 0.39 and $0.1 \log \text{ cd} \cdot \text{s} \cdot \text{m}^{-2}$, respectively. Moreover, a significant Treatment by Time interaction was found for the b-wave implicit time ($F_{1,11} = 13.9$, $P = 0.0033$) at $0.84 \log \text{ cd} \cdot \text{s} \cdot \text{m}^{-2}$ for which melatonin caused an increased of $0.4 \text{ ms} \pm 0.1$ ($P = 0.0061$). The only significant result for a-wave was a Treatment by Time interaction for the a-wave implicit time at $0.84 \log \text{ cd} \cdot \text{s} \cdot \text{m}^{-2}$ for which melatonin generated an increase of $0.1 \text{ ms} \pm 0.3$. No significant result was found after placebo administration at any flash intensity or any parameter.

Because the highest b-wave amplitude did not occur in all subjects at the highest flash intensity (it was observed at $0.39 \log \text{ cd} \cdot \text{s} \cdot \text{m}^{-2}$ in 5 subjects) a separate analysis was performed for the maximal ERG response (Vmax). Significant results were found on the Vmax b-wave amplitude and OP's but not on a-wave or log K parameters. rANOVA revealed a significant Treatment by Time interaction for b-wave amplitude ($F_{1,11} = 12.9$, $P = 0.0043$) and implicit time ($F_{1,11} = 20.1$, $P = 0.0009$). Melatonin administration caused a significant (see Table 2) decrease of the Vmax amplitude) of 7.9% ($6.9 \mu V \pm 2.0 \mu V$) along with an increase of $0.4 \text{ ms} \pm 0.1 \text{ ms}$ of the implicit time. The amplitude and implicit time of the three major waves were analyzed: OP2, OP3, and OP4. In some cases (5 participants), only two OPs were detected (OP2 and OP4). However, all the subjects maintained the same number of OPs throughout the study between conditions. Because not all participants demonstrated 3 OPs, we opted to use the sum of OPs for analysis. A significant interaction for Treatment by Time was observed for the Vmax sum of OPs amplitude ($F_{1,11} = 5.51$, $p = 0.039$). This amplitude was reduced after melatonin administration by $6.97 \mu V \pm 2.59 \mu V$ ($P = 0.023$), that is a decrease of 9.9%. The ratio between the Vmax sum of OPs and the respective b-wave amplitude was similar between conditions ($F_{1,11} = 0.40$, P

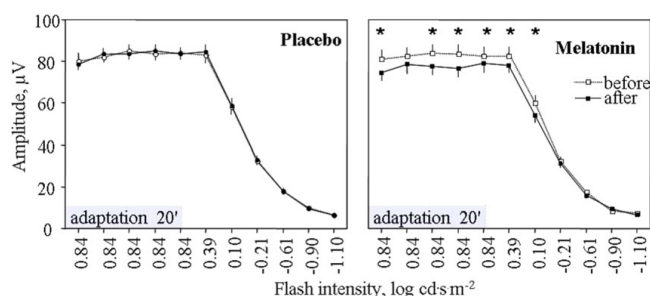


Figure 2
Changes of the amplitude of ERG response after placebo and melatonin in 12 healthy subjects. *indicates significant difference ($P < 0.05$, Student's paired t-test).

> 0.5). At V_{max} , no significant result was found after placebo administration.

Discussion

To our knowledge, this is the first study to assess the impact of exogenous melatonin on the human photopic luminance response function. We observed that oral melatonin administration induces a significant decrease of the maximal cone response as well as a decrease of the sum of OPs. The impact of melatonin on retinal function was quite rapid, as it could readily be observed after 30 minutes and persisted for 50 min post ingestion. The decrease in b-wave and sum of OPs were similar in magnitude, with 6.2% to 10% for the b-wave and 9.9% for the sum of OPs. There was no change in cone sensitivity (K index).

The fact that we observed retinal changes in the present study suggests that oral melatonin administration can reach the eye through the general circulation. This is consistent with a previous study using the ERG technique showing that muscular injection of melatonin could have even more impact on fowl's retinal response (reaching the eye through the circulation) than intraocular injection [27].

Because melatonin was administered at a time of day when it is not usually present, we were able to measure its direct impact on cone functioning without any influence of the normal circadian secretion of melatonin in the eye, which occurs at night. Our results are consistent with those of previous studies. For instance, a study performed on the green iguana demonstrated that administration of melatonin during the subjective day reduces the cone b-wave amplitude in a dose-response manner [28]. In humans, an experiment performed by Rufiange et al. [29] showed a strong correlation between the level of salivary melatonin and the ERG cone maximal response, with circadian change in melatonin levels yielding a cone ERG response reduction in the range of 3% to 16%. Also, Emser et al. [19] reported similar results with a decrease of both the scotopic and the photopic human b-wave using 10 mg of exogenous melatonin. However, in the latter study, the scotopic ERG response was triggered by a bright red LED flash, which likely triggered a mixed cone-rod response. In fact, close inspection of the waveforms presented in the paper by the authors show that photopic and scotopic responses were similar both in shape and amplitude. There is therefore a strong suspicion that the find-

Table 2: An immediate change of the ERG indices after melatonin intake

	period	b-wave amplitude	b-wave IT	a-wave IT
Adaptation period	T0	$P = 0.0014$	NS	$P = 0.046$
	T5	NS	NS	NS
	T10	$P = 0.0014$	$P = 0.028$	$P = 0.042$
	T15	$P = 0.003$	NS	NS
Testing period	0.84	$P = 0.011$	$P = 0.0061$	$P = 0.0036$
	0.39	$P = 0.011$	NS	NS
	0.1	$P = 0.0008$	NS	NS
	-0.21 to -1.1	NS	NS	NS
	V_{max}	$P = 0.0065$	$P = 0.0003$	NS

NS = non significant

ings on the scotopic ERG thus obtained could be attributable to the effect of melatonin on cone functioning.

The way melatonin impacts the cone response is unclear. It has been suggested from the avian model that the presence of melatonin in the circulation could be interpreted by the system as a "night signal" shifting the retina to night vision [11]. But as mentioned earlier, a direct effect on dopamine (especially in day time) must also be considered. Interestingly, a correlation has been found between the dopamine metabolite homovanillic acid (HVA) and the blue cone b-wave amplitude in humans [30]. Among those cocaine-dependant patients, the lower was the presence of HVA in cerebrospinal fluid, the lower was the blue cone b-wave. This is consistent with another study showing that dopamine blockers such as chlorpromazine and fluphenazine can reduce significantly the human ERG cone-dominated response [31].

A mechanism implicating horizontal cells and dopamine could also explain the cone ERG maximal response decrease. These interconnecting neurons help to integrate and regulate the input from multiple photoreceptors. A dopamine reduction due to the presence of melatonin could increase horizontal cell coupling since it has been shown that dopamine antagonists enhance this phenomenon in mudpuppy retina [32]. Knowing that horizontal cells have an inhibitory effect on cones [33], it seems conceivable that increasing horizontal cell coupling (through dopamine inhibition) could provoke a decrease of cone maximal response to light.

However, we cannot exclude the possibility of an alteration of intracellular calcium level by melatonin since this hormone seems to increase the intracellular dispersion of this ion and decrease the gap junction communication between cells. But since this phenomenon has been observed in astrocytes of chick diencephalons, we cannot conclude that melatonin could have the same effect on retinal gap junctions [34].

Regarding the sum of OPs reduction, the origin of this effect is difficult to explain as the exact origin of all OPs is not elucidated yet [35]. In the present study, however, the ratio between the sum of OPs and b-wave amplitude remains similar before and after melatonin, suggesting that OPs were not more affected than the b-wave itself. From our study, we can only conclude that the b-wave and OPs generators are equally affected by melatonin.

Whereas the influence of melatonin on the b-wave was obvious in our study, the effect on the a-wave was not consistent. Since data obtained on primate have shown that the a-wave is generated mostly by photoreceptors [36],

this suggests that exogenous melatonin does not have a profound effect on photoreceptors even though MT1 receptors have been found on human cone photoreceptors [37]. However, there is also the possibility of a type II error considering small amplitude-to-noise ratio of a-wave and our small subjects sample.

Although it would have been interesting to perform the same experiment including rods ERG it is unlikely that we would have observed any difference on rods response. In fact, a preliminary melatonin study (oral administration) performed by our group with beagle dogs did not show any significant change on rods ERG with 80 mg of melatonin whereas a substantial effect on cone response was observed [38]. Moreover, we were interested in testing the impact of melatonin during the daytime (when it is sometimes ingested to treat circadian disorders) that is when day vision generated by cones is most significant.

Because melatonin appears to have a negative impact on cone function, we can suspect that naturally increasing melatonin in the evening may play a role in decreasing the impact of the cone system (day vision) in order to better promote the rod system (night vision) and by doing so, ensuring that the most suitable visual function is enhanced according to the time of the day.

Conclusion

In conclusion, the negative impact of melatonin on cone response may serve to promote night vision. The impact of melatonin on retinal function must be taken into consideration when this compound is used without any supervision in chronic self-medication. Further assessment should be conducted in animal species in order to evaluate a potential effect of chronic use of this compound that is considered as a nutritional (diet) supplement in the United States of America.

Competing interests

The authors declare that they have no competing interests.

Authors' contributions

AMG did most of the redaction of the paper and interpretation of the data and contributed to the statistical analysis.

KVD collected the data, contributed to the design of the study and to the statistical analysis.

SGR contributed to the interpretation of the results and the final revision of the manuscript.

MH contributed to the design of the study, the interpretation of the results and performed the final revisions.

References

1. Moore CB, Siopes TD, Steele CT, Underwood H: **Pineal melatonin secretion, but not ocular melatonin secretion, is sufficient to maintain normal immune responses in Japanese quail (*Coturnix coturnix japonica*).** *Gen Comp Endocrinol* 2002, **126**:352-358.
2. Weaver DR, Stehle JH, Stopa EG, Reppert SM: **Melatonin receptors in human hypothalamus and pituitary: implications for circadian and reproductive responses to melatonin.** *J Clin Endocrinol Metab* 1993, **76**:295-301.
3. Lewy AJ, Wehr TA, Goodwin FK, Newsome DA, Markey SP: **Light suppresses melatonin secretion in humans.** *Science* 1980, **210**:1267-1269.
4. Bernard M, Iuvone PM, Cassone VM, Roseboom PH, Coon SL, Klein DC: **Avian melatonin synthesis: photic and circadian regulation of serotonin N-acetyltransferase mRNA in the chicken pineal gland and retina.** *J Neurochem* 1997, **68**:213-224.
5. Savaskan E, Wirz-Justice A, Olivieri G, Pache M, Krauchi K, Brydon L, Jockers R, Muller-Spahn F, Meyer P: **Distribution of melatonin MT1 receptor immunoreactivity in human retina.** *J Histochem Cytochem* 2002, **50**:519-526.
6. Tan DX, Manchester LC, Hardeland R, Lopez-Burillo S, Mayo JC, Sainz RM, Reiter RJ: **Melatonin: a hormone, a tissue factor, an autocoid, a paracoid, and an antioxidant vitamin.** *J Pineal Res* 2003, **34**:75-78.
7. Rohde BH, McLaughlin MA, Chiou LY: **Existence and role of endogenous ocular melatonin.** *J Ocul Pharmacol* 1985, **1**:235-243.
8. Mhatre MC, van Jaarsveld AS, Reiter RJ: **Melatonin in the lacrimal gland: first demonstration and experimental manipulation.** *Biochem Biophys Res Commun* 1988, **153**:1186-1192.
9. Reme CE, Wirz-Justice A, Terman M: **The visual input stage of the mammalian circadian pacemaking system: I. Is there a clock in the mammalian eye?** *J Biol Rhythms* 1991, **6**:5-29.
10. Tosini G, Menaker M: **The clock in the mouse retina: melatonin synthesis and photoreceptor degeneration.** *Brain Res* 1998, **789**:221-228.
11. McGoogan JM, Cassone VM: **Circadian regulation of chick electroretinogram: effects of pinealectomy and exogenous melatonin.** *Am J Physiol* 1999, **277**:R1418-1427.
12. White MP, Fisher LJ: **Effects of exogenous melatonin on circadian disc shedding in the albino rat retina.** *Vision Res* 1989, **29**:167-179.
13. Besharse JC, Dunis DA: **Methoxyindoles and photoreceptor metabolism: activation of rod shedding.** *Science* 1983, **219**:1341-1343.
14. Dubocovich ML: **Characterization of a retinal melatonin receptor.** *J Pharmacol Exp Ther* 1985, **234**:395-401.
15. Wirz-Justice A, Da Prada M, Reme C: **Circadian rhythm in rat retinal dopamine.** *Neurosci Lett* 1984, **45**:21-25.
16. Witkovsky P: **Dopamine and retinal function.** *Doc Ophthalmol* 2004, **108**:17-40.
17. Tosini G, Dirden JC: **Dopamine inhibits melatonin release in the mammalian retina: in vitro evidence.** *Neurosci Lett* 2000, **286**:119-122.
18. Fujieda H, Scher J, Hamadanizadeh SA, Wankiewicz E, Pang SF, Brown GM: **Dopaminergic and GABAergic amacrine cells are direct targets of melatonin: immunocytochemical study of mt1 melatonin receptor in guinea pig retina.** *Vis Neurosci* 2000, **17**:63-70.
19. Wiechmann AF, Vrieze MJ, Dighe R, Hu Y: **Direct modulation of rod photoreceptor responsiveness through a Mel(1c) melatonin receptor in transgenic *Xenopus laevis* retina.** *Invest Ophthalmol Vis Sci* 2003, **44**:4522-4531.
20. Herxheimer A, Waterhouse J: **The prevention and treatment of jet lag.** *Brj* 2003, **326**:296-297.
21. Arendt J: **Melatonin and the mammalian pineal gland** London: Chapman & Hall; 1995.
22. Sugawara T, Sieving PA, Iuvone PM, Bush RA: **The melatonin antagonist luzindole protects retinal photoreceptors from light damage in the rat.** *Invest Ophthalmol Vis Sci* 1998, **39**:2458-2465.
23. Wiechmann AF, O'Steen WK: **Melatonin increases photoreceptor susceptibility to light-induced damage.** *Invest Ophthalmol Vis Sci* 1992, **33**:1894-1902.
24. Emser W, Dechoux R, Weiland M, Wirz-Justice A: **Melatonin decreases the amplitude of the b-wave of the human electroretinogram.** *Experientia* 1993, **49**:686-687.
25. Hebert M, Lachapelle P, Dumont M: **Reproducibility of electroretinograms recorded with DTL electrodes.** *Doc Ophthalmol* 1995, **91**:333-342.
26. Brown BH: **Waveform analysis of surface electrode EMG's used to give independent control signals from adjacent muscles.** *Med Biol Eng* 1968, **6**:653-658.
27. Lu J, Zoran MJ, Cassone VM: **Daily and circadian variation in the electroretinogram of the domestic fowl: effects of melatonin.** *J Comp Physiol A* 1995, **177**:299-306.
28. Miranda-Anaya M, Bartell PA, Menaker M: **Circadian rhythm of iguana electroretinogram: the role of dopamine and melatonin.** *J Biol Rhythms* 2002, **17**:526-538.
29. Rufiange M, Dumont M, Lachapelle P: **Correlating retinal function with melatonin secretion in subjects with an early or late circadian phase.** *Invest Ophthalmol Vis Sci* 2002, **43**:2491-2499.
30. Roy A, Roy M, Berman J, Gonzalez B: **Blue cone electroretinogram amplitudes are related to dopamine function in cocaine-dependent patients.** *Psychiatry Res* 2003, **117**:191-195.
31. Holopigian K, Clewener L, Seiple W, Kupersmith MJ: **The effects of dopamine blockade on the human flash electroretinogram.** *Doc Ophthalmol* 1994, **86**:1-10.
32. Dong CJ, McReynolds JS: **The relationship between light, dopamine release and horizontal cell coupling in the mud-puppy retina.** *J Physiol* 1991, **440**:291-309.
33. Baylor DA, Fuortes MG: **Electrical responses of single cones in the retina of the turtle.** *J Physiol* 1970, **207**:77-92.
34. Peters JL, Cassone VM, Zoran MJ: **Melatonin modulates intercellular communication among cultured chick astrocytes.** *Brain Res* 2005, **1031**:10-19.
35. Wachtmeister L: **Oscillatory potentials in the retina: what do they reveal.** *Prog Retin Eye Res* 1998, **17**:485-521.
36. Heynen H, van Norren D: **Origin of the electroretinogram in the intact macaque eye-II. Current source-density analysis.** *Vision Res* 1985, **25**:709-715.
37. Meyer P, Pache M, Loeffler KU, Brydon L, Jockers R, Flammer J, Wirz-Justice A, Savaskan E: **Melatonin MT-1-receptor immunoreactivity in the human eye.** *Br J Ophthalmol* 2002, **86**:1053-1057.
38. SG Rosolen CC, Saucet J, Rigaudière F, LeGargasson J-F, Lachapelle P, Danilenko K, Hebert M: **Effect of melatonin in the dog's ERG.** In *ARVO; Fort Lauderdale The Association for Research in Vision and Ophthalmology*; 2004.

Publish with **BioMed Central** and every scientist can read your work free of charge

"BioMed Central will be the most significant development for disseminating the results of biomedical research in our lifetime."

Sir Paul Nurse, Cancer Research UK

Your research papers will be:

- available free of charge to the entire biomedical community
- peer reviewed and published immediately upon acceptance
- cited in PubMed and archived on PubMed Central
- yours — you keep the copyright

Submit your manuscript here:
http://www.biomedcentral.com/info/publishing_adv.asp

