



**HAL**  
open science

**aes, the gene encoding the esterase B in Escherichia coli,  
is a powerful phylogenetic marker of the species.**

Mathilde Lescat, Claire Hoede, Olivier Clermont, Louis Garry, Pierre Darlu,  
Pierre Tuffery, Erick Denamur, Bertrand Picard

► **To cite this version:**

Mathilde Lescat, Claire Hoede, Olivier Clermont, Louis Garry, Pierre Darlu, et al.. aes, the gene encoding the esterase B in Escherichia coli, is a powerful phylogenetic marker of the species.. BMC Microbiology, 2009, 9 (1), pp.273. 10.1186/1471-2180-9-273 . inserm-00663545

**HAL Id: inserm-00663545**

**<https://inserm.hal.science/inserm-00663545>**

Submitted on 27 Jan 2012

**HAL** is a multi-disciplinary open access archive for the deposit and dissemination of scientific research documents, whether they are published or not. The documents may come from teaching and research institutions in France or abroad, or from public or private research centers.

L'archive ouverte pluridisciplinaire **HAL**, est destinée au dépôt et à la diffusion de documents scientifiques de niveau recherche, publiés ou non, émanant des établissements d'enseignement et de recherche français ou étrangers, des laboratoires publics ou privés.

Research article

Open Access

## ***aes*, the gene encoding the esterase B in *Escherichia coli*, is a powerful phylogenetic marker of the species**

Mathilde Lescat<sup>1</sup>, Claire Hoede<sup>1</sup>, Olivier Clermont<sup>1</sup>, Louis Garry<sup>1</sup>, Pierre Darlu<sup>2</sup>, Pierre Tuffery<sup>3</sup>, Erick Denamur<sup>1</sup> and Bertrand Picard<sup>\*4</sup>

Address: <sup>1</sup>INSERM U722 and Université Paris 7, Paris, France, <sup>2</sup>INSERM U535, Villejuif, France, <sup>3</sup>INSERM U436 and Université Paris 7, Paris, France and <sup>4</sup>INSERM U722 and Université Paris 13, Paris, France

Email: Mathilde Lescat - mathilde.lescat@inserm.fr; Claire Hoede - claire\_hoede@yahoo.fr; Olivier Clermont - olivier.clermont@inserm.fr; Louis Garry - louis.garry@inserm.fr; Pierre Darlu - pierre.darlu@inserm.fr; Pierre Tuffery - pierre.tuffery@univ-paris-diderot.fr; Erick Denamur - erick.denamur@inserm.fr; Bertrand Picard\* - bertrand.picard@avc.aphp.fr

\* Corresponding author

Published: 29 December 2009

Received: 27 January 2009

BMC Microbiology 2009, 9:273 doi:10.1186/1471-2180-9-273

Accepted: 29 December 2009

This article is available from: <http://www.biomedcentral.com/1471-2180/9/273>

© 2009 Lescat et al; licensee BioMed Central Ltd.

This is an Open Access article distributed under the terms of the Creative Commons Attribution License (<http://creativecommons.org/licenses/by/2.0>), which permits unrestricted use, distribution, and reproduction in any medium, provided the original work is properly cited.

### Abstract

**Background:** Previous studies have established a correlation between electrophoretic polymorphism of esterase B, and virulence and phylogeny of *Escherichia coli*. Strains belonging to the phylogenetic group B2 are more frequently implicated in extraintestinal infections and include esterase B<sub>2</sub> variants, whereas phylogenetic groups A, B1 and D contain less virulent strains and include esterase B<sub>1</sub> variants. We investigated esterase B as a marker of phylogeny and/or virulence, in a thorough analysis of the esterase B-encoding gene.

**Results:** We identified the gene encoding esterase B as the acetyl-esterase gene (*aes*) using gene disruption. The analysis of *aes* nucleotide sequences in a panel of 78 reference strains, including the *E. coli* reference (ECOR) strains, demonstrated that the gene is under purifying selection. The phylogenetic tree reconstructed from *aes* sequences showed a strong correlation with the species phylogenetic history, based on multi-locus sequence typing using six housekeeping genes. The unambiguous distinction between variants B<sub>1</sub> and B<sub>2</sub> by electrophoresis was consistent with *Aes* amino-acid sequence analysis and protein modelling, which showed that substituted amino acids in the two esterase B variants occurred mostly at different sites on the protein surface. Studies in an experimental mouse model of septicaemia using mutant strains did not reveal a direct link between *aes* and extraintestinal virulence. Moreover, we did not find any genes in the chromosomal region of *aes* to be associated with virulence.

**Conclusion:** Our findings suggest that *aes* does not play a direct role in the virulence of *E. coli* extraintestinal infection. However, this gene acts as a powerful marker of phylogeny, illustrating the extensive divergence of B2 phylogenetic group strains from the rest of the species.

### Background

In humans, *Escherichia coli* strains can be commensal (part of the normal intestinal microbiota) and/or the cause of various infectious diseases (intestinal and extraintestinal

infections) [1]. The extent of commensal or virulent properties displayed by a strain is determined by a complex balance between the status of the host and the production of virulence factors in the bacteria. The role of the intrinsic

virulence of the isolates needs to be clarified and molecular markers of virulence are required to predict the invasiveness of clinical strains isolated during the course of extraintestinal infection or patient colonization.

*E. coli* has a clonal genetic structure and exhibits a low level of recombination [2]. *E. coli* strains can be categorised into four main phylogenetic groups, A, B1, B2, and D. These groups have been defined based on proteic (multi-locus enzyme electrophoresis including the electrophoresis of esterases [3]) and genetic markers (restriction fragment length polymorphism [4], random amplified polymorphic DNA [4] and multi-locus sequence typing (MLST) [5,6]). Seven types of esterases (A, B, C, D, I, F and S), differing in their ability to hydrolyse synthetic substrates and their sensitivity to di-isopropyl fluorophosphate, have been identified by separation on polyacrylamide agarose gels [7-9]. The most frequently observed type in this group of enzymes corresponds to esterase B (EC 3.1.1.1). This protein shows two types of electrophoretic mobility: B<sub>1</sub> from M<sub>f</sub> = 74 to M<sub>f</sub> = 66 and B<sub>2</sub> from M<sub>f</sub> = 63 to M<sub>f</sub> = 57 [9]. Strains with type B<sub>2</sub> esterase belong to the phylogenetic group B2, whereas those with type B<sub>1</sub> esterase belong to the non-B<sub>2</sub> phylogenetic groups [10]. Several studies have shown a correlation between long-term evolutionary history (strain phylogeny) and virulence in *E. coli*, with most extraintestinal *E. coli* pathogens (including urinary tract infection strains) belonging to just one of the four main *E. coli* phylogenetic groups, the phylogenetic group B2 [11-13]. This correlation suggests a possible link between esterase polymorphism and extraintestinal virulence in an asexual species with a low level of recombination. Esterase B allozymes therefore appear to act as efficient molecular markers of virulence dividing *E. coli* strains into two genetically distinct groups, which differ significantly in their pathogenicity. However, the direct role of esterase B, or of its B<sub>1</sub> and/or B<sub>2</sub> allozymes, in the virulence process remains unknown.

The aims of this study were (i) to identify the gene encoding esterase B, (ii) to analyse its polymorphic counterparts in relation to *E. coli* clonal structure, (iii) to identify a potential physical link between this genetic locus and regions known to be associated with pathogenicity in the *E. coli* genome, and (iv) to test a potential direct role of esterase B in virulence in a mouse model of extraintestinal infection.

## Results and Discussion

### The acetyl esterase gene (*aes*) encodes esterase B

Seven candidate genes encoding proteins with predicted esterase activity were identified, based on their respective PM and pI values, using the MaGe system [14] (*aes* [15], *yddV*, *glpQ*, *ndk*, *yzhH* and *cpdA*). Of these, *Aes* exhibited several characteristics particularly reminiscent of esterase

B: i) a major esterase domain, ii) a theoretical pI of 4.72 for the K-12 strain protein (esterase B<sub>1</sub>, pI ranging from 4.5 to 4.8) and 5.18 for CFT073 protein (esterase B<sub>2</sub>, pI ranging from 4.85 to 5.0), and iii) the presence of a serine in the active site [9]. The inactivation of *aes* by gene disruption in K-12 MG1655 and CFT073 strains and complementation of the mutant strains with the *aes* gene confirmed that *Aes* was esterase B (Additional file 1: Fig. S1 and data not shown).

We then studied the correlation between *Aes* sequences and esterase B electrophoretic polymorphism. The comparison of the *Aes* phylogenetic tree with the theoretical and observed pI values and the esterase B electrophoretic mobilities (M<sub>f</sub> values) for the 72 ECOR strains [10] is shown in Fig. 1. Overall analysis of the tree confirmed separation of esterase B into two variants: esterase B<sub>1</sub> and esterase B<sub>2</sub>. Indeed, the *Aes* tree showed a clear distinction between *Aes* from the phylogenetic group B2 strains and *Aes* proteins from other strains, separated by a long branch, well supported by bootstrap (83%). Moreover, the characterisation of the phylogenetic group B2, based on *Aes* polymorphism, was consistent with the pI and M<sub>f</sub> values of esterase B<sub>2</sub> (pI: 4.85 to 5.0 and M<sub>f</sub> 57 to M<sub>f</sub> 62), which were previously demonstrated to be specific to the phylogenetic group B2. Likewise, the characterisation of the phylogenetic groups A, B1 and D, based on *Aes* polymorphism, correlated with the pI and M<sub>f</sub> values of esterase B<sub>1</sub> (pI: 4.60 to 4.80 and M<sub>f</sub> 68 to M<sub>f</sub> 72) [10]. Amino-acid substitutions detected from the branches of the *Aes* tree were analysed taking into account variation in esterase B mobility and pI values [16] (Fig. 1). In most cases, for the *Aes* phylogenetic group B2 strains, substitutions of acidic to neutral, neutral to basic or acidic to basic amino acids corresponded to increases in pI (from 4.85 to 5.00) and decreases in M<sub>f</sub> values (from 62 to 57) among esterase B variants. However, there were some discrepancies. For example, the substitution of a basic amino acid in the ECOR 53 and 60 strains by a neutral amino acid in the ECOR 61 and 62 strains (R?C) corresponded to a faster migration in the ECOR 61 and 62 strains (M<sub>f</sub> values 62 versus 60), with no effect on pI (4.85) (Fig. 1).

A more complex pattern of polymorphism was found among the A, B1 and D phylogenetic group strains. Taking the most frequent esterase B electrophoretic variant (pI: 4.60 and M<sub>f</sub> 70) detected in the phylogenetic group A and D strains, an acidic to neutral amino-acid change (E?G) led to an increase in pI (from 4.60 to 4.75) and a decrease of M<sub>f</sub> (from 70 to 68) of the esterase B variant, as expected. This amino-acid change was detected in 11 strains in the phylogenetic group A (Fig. 1). In contrast, several discrepancies were found among strains belonging to the phylogenetic B1 group: *Aes* polymorphism included several substitutions of neutral to neutral amino



age ratio  $\omega$  (dN/dS) for all sites and all lineages at 0.18. The likelihood ratio test suggested that *aes* was under strong global purifying selection (compared to the neutral hypothesis which is  $\omega = 0$ ). The M1a, M2a, M7 and M8 models, estimating the selection on specific codons, confirmed that the vast majority (91%) of the sites are under negative selection. Finally, the branch-site model A did not detect positive selection along the branch separating group B2 from group non-B2 strains. Thus, the use of several tests for selection has shown that the evolution of *aes* has been driven essentially by purifying selection, as observed for the housekeeping genes used in the MLST (data not shown); no positively selected site was identified for the branch separating esterase B<sub>2</sub> from esterase B<sub>1</sub> strains. Previous studies based on whole genome sequencing data using PAML have not identified *aes* to be under positive selection [17,18].

Visual comparison of the phylogenetic history of *aes* with that of the six concatenated housekeeping genes, reflecting the species phylogeny, revealed a similar topology with four main phylogenetic groups (Fig. 2). Indeed, all strains belonging to the B2 phylogenetic group were clustered in a monophyletic group (bootstrap 99%) with ECOR 66 at its base, as observed in the MLST tree. Likewise, two sub-groups were observed for phylogenetic group D, one of which was associated with the phylogenetic group B2 (ECOR 35, 36, 38, 39, 40, 41) (bootstrap 85%), also observed in the MLST tree. Phylogenetic group A also constituted two sub-groups, although these were not sister groups. By contrast, the B1 phylogenetic group was monophyletic overall, with only two strains (ECOR 4 and ECOR 47) clearly misclassified (Fig. 2).

We used a recently developed technique ("TreeOfTree") allowing the level of congruence between phylogenetic trees to be tested [19]. We tested each individual housekeeping gene tree, the MLST tree, and the *aes* tree. All the bootstraps are low enough (less than 67%) to suggest that all the gene trees can be viewed as not incongruent, the *aes* gene tree itself clustering with *pabB* and *trpA* gene trees with very low bootstrap (44%) (Fig. 3). Thus, *aes* tree topology showed that *aes* is a powerful marker of the species phylogeny, as observed for each housekeeping gene used in the MLST scheme.

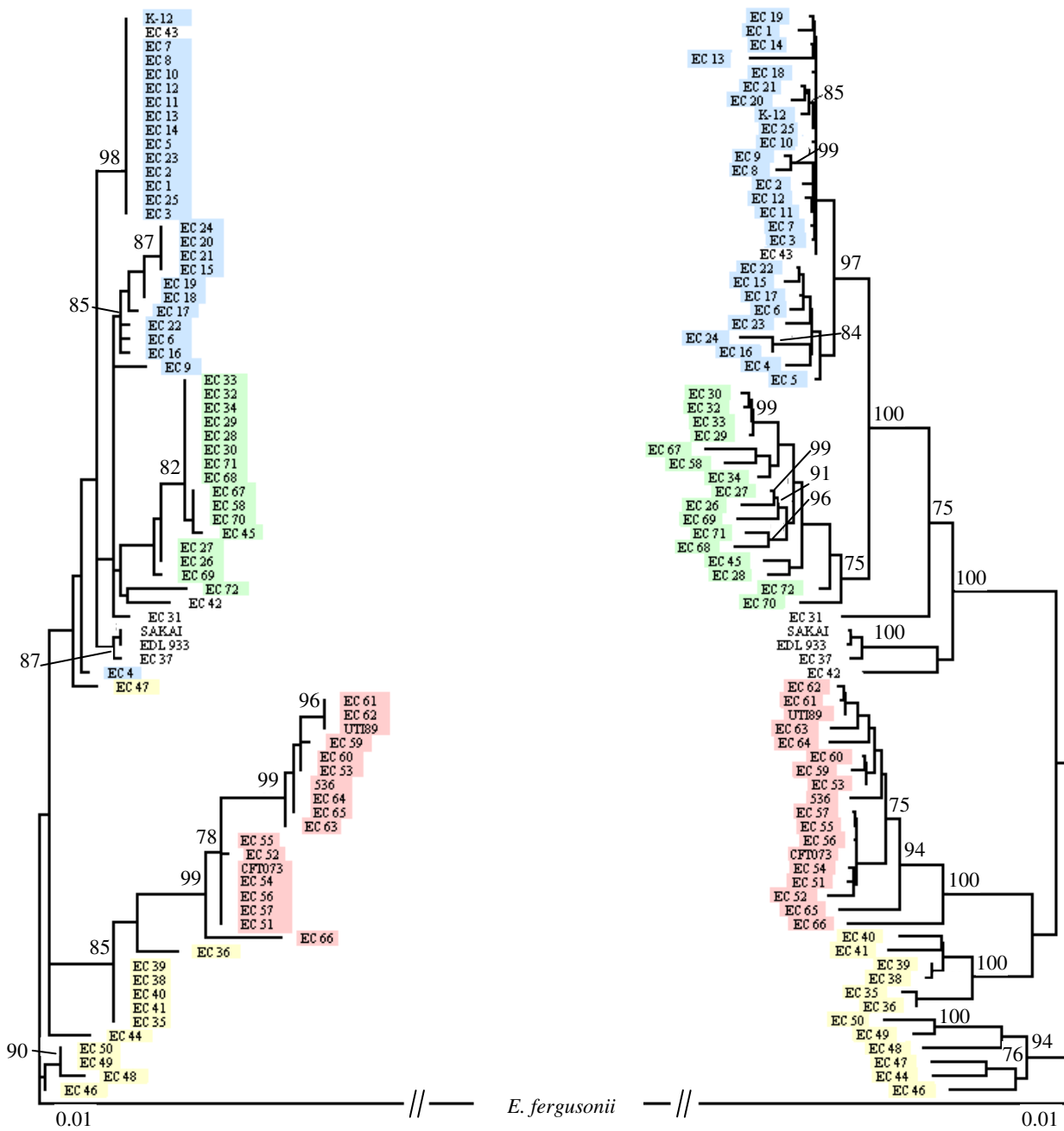
*Aes* B<sub>1</sub> and B<sub>2</sub> protein variants were then compared by protein modelling. We found that residues S 157, D 254 and H 284 had a geometry similar to that of the esterase catalytic site. Thirty-eight polymorphic sites were identified by comparing the 319 *Aes* amino-acid sequences obtained for the 72 ECOR strains and six reference strains. For four of these sites, variation has become fixed in both B<sub>1</sub> and B<sub>2</sub> types, with the identified residues differing between the two types at each site. These polymorphisms could thus be

used to distinguish between the types: the B<sub>1</sub> conserved amino acids A 53, M 64, E 73 and C 78 correspond to the B<sub>2</sub> conserved amino acids V, R, K and Y, respectively. These four polymorphic sites were found on the long B2/non B2 branch in the proteic tree, explaining the observed high bootstrap (83%) (Fig. 1). Fig. 4 shows the location of 24 additional sites at the protein surface with observed amino-acid variants for either type B<sub>1</sub> (green) or type B<sub>2</sub> (red). No one site was polymorphic for both B<sub>1</sub> and B<sub>2</sub> types. But for all the polymorphic sites within types B<sub>1</sub> and B<sub>2</sub>, some of the amino-acid variants are shared by the two types. Consequently, these sites cannot be considered to be specific to either one type or the other and cannot be used to distinguish between the two types of protein. Polymorphic sites were clustered, localised at the surface and were not found in the active site, consistent with previous observations of similarity in the catalytic activity of B<sub>1</sub> and B<sub>2</sub> esterases with synthetic substrates [7,9]. These differences in location of the polymorphic sites between the two variants support the divergence of the B2 phylogenetic group strains from the A, B1 and D phylogenetic groups strains within this species.

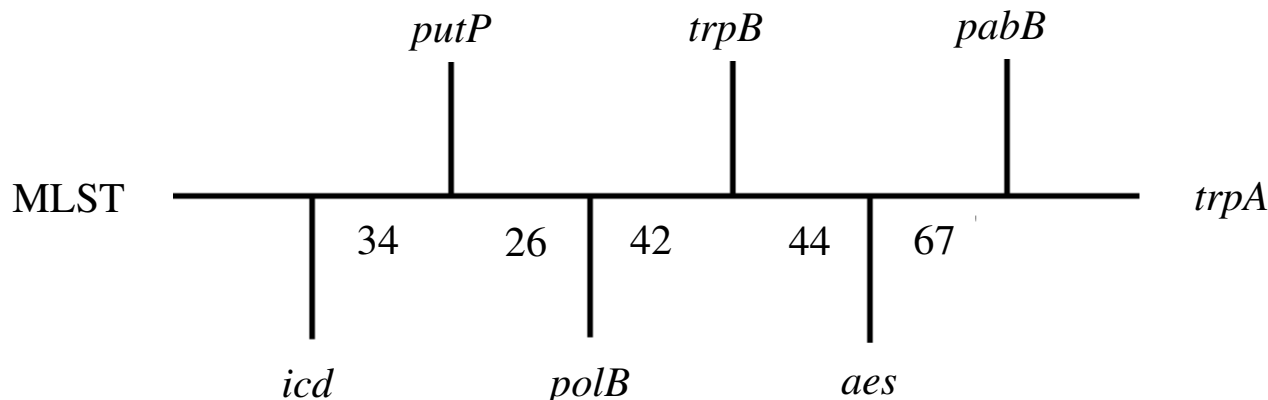
#### **Is *Aes* involved in virulence?**

The previously observed correlation between electrophoretic esterase B polymorphism and the distinction between B2 and non-B2 phylogenetic group strains [10] - and thus with the extraintestinal virulence of the strains - suggested a putative role for the enzyme, or certain variants, as a virulence factor. The esterase B hydrolase function may have a direct role in the colonization or invasion of the eukaryotic cells as it was observed for esterases in other bacteria [20,21]. Indeed, esterase B<sub>2</sub> variants belonging to phylogenetic group B2 may confer higher levels of virulence to the strain during extraintestinal infection. There are several examples of proteins with variants playing different roles in extraintestinal infections: the adhesins FimH [22], PapG [23] and the somatic antigen O [24,25].

Previous studies of *Aes* have not demonstrated a role of the protein in virulence. Firstly, experimental studies characterising *Aes* as an enzyme with esterase activity have demonstrated the inhibitory interaction of *Aes* with MalT, a transcriptional regulator of the maltose regulon. These findings suggested a role for *Aes* in the regulation of maltose metabolism [15,26]. *Aes* may also play a role in the regulation of raffinose metabolism by inhibiting  $\alpha$ -galactosidase [27]. However, these data were obtained from overexpression of *aes* from plasmids, thus raising the question of their relevance *in vivo*. An illustration of *aes* overexpression from the plasmid pACS2 [28] is shown in Additional file 1: Fig. S1. Secondly, a previous study of *aes* expression in the K-12 strain *in vitro* did not find significant effects on expression under the various metabolic,



**Figure 2**  
**Phylogenetic trees for the 72 ECOR strains and six *E. coli* reference strains.** The trees were constructed from (A) *aes* sequences and (B) multi-locus sequence typing of six housekeeping genes representing the species phylogeny (*trpA*, *trpB*, *pabB*, *putP*, *icd* and *polB*) [5], obtained using PHYML procedure [50]. *E. fergusonii* was used as an outgroup. Bootstraps are shown for values higher than 70%. Strains studied and belonging to phylogenetic groups A (blue boxed), B1 (green boxed), B2 (red boxed), D (yellow boxed) and UG (white boxed) are indicated.



**Figure 3**

**Tree representing the distance matrix generated from comparisons between gene tree structures.** Gene tree structure comparisons were between trees based on *aes* sequences, six individual housekeeping genes (*trpA*, *trpB*, *pabB*, *putP*, *icd* and *polB*) and multi-locus sequence typing (concatenation of the six housekeeping genes), with distances derived from path-length difference. Numbers are bootstraps.

stress or environmental conditions tested <http://genexpdb.ou.edu/>, with the exception of *aes* overexpression observed in strains cultured in the presence of acetate [29]. Interestingly, esterase B exhibits Michaelis-Menten kinetics for the hydrolysis of 1-naphthyl acetate [9]. Finally, *aes* expression was found to be homogeneous across 10 representative strains of *E. coli/Shigella* cultured in 869 medium [30].

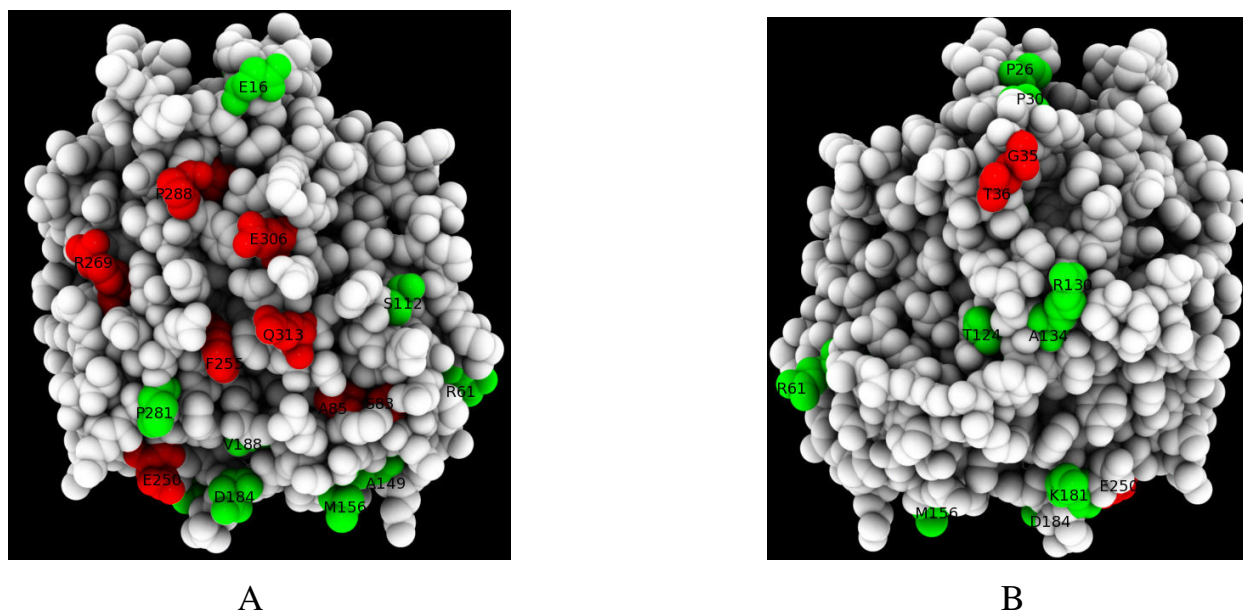
Our previous findings from the study of the genetic sequence surrounding *aes* did not suggest a role for the encoded protein in virulence. Indeed, comparisons, using the MaGe system, of 75 kbp of sequence upstream and downstream from *aes* in the 20 strains of *E. coli* [31] showed that *aes* is not located in/or adjacent to any regions linked to extraintestinal pathogenicity specific to B2 strains (Additional file 2: Table S1).

To gain insight into Aes function we tested the mutants under different conditions. Firstly, we studied the *in vitro* growth of parent-type strains and their respective mutants on several carbon sources. We did not observe any difference between parent-type strains K-12 or CFT073 and their respective mutants K-12  $\Delta$ *aes* and CFT073  $\Delta$ *aes* in competition studies with LB and gluconate minimum media (data not shown). Additionally, growth of the strains CFT073, K-12, CFT073  $\Delta$ *aes* and K-12  $\Delta$ *aes*, in the presence of different carbon sources, was the same for par-

ent and mutant strains. These results suggested that Aes does not play a role in regulation of the growth of the strains in these conditions. Secondly, we studied whether Aes is involved in the virulence of *E. coli in vivo* using a septicemia mouse model. Kaplan-Meier curves obtained for CFT073 and its mutants CFT073  $\Delta$ *aes* and CFT073  $\Delta$ *aes*:Cm were similar, suggesting that Aes is not involved in the virulence process ( $p = 0.87$ ) (Additional file 1: Fig. S2).

### Conclusion

Selection tests and phylogenetic analyses indicate that *aes* is under purifying selection, showing a similar evolutionary history to that of the species. The differences in electrophoretic properties between the variant types B<sub>1</sub> and B<sub>2</sub> were consistent with analyses of the amino-acid sequence tree for Aes and protein structure models obtained for these variants. These findings illustrated the marked divergence of the B2 phylogenetic group from the A, B1 and D phylogenetic groups in this species. This confirms the classical characteristics of esterases as excellent markers in the study of population genetics for prokaryotes, particularly *Enterobacteriaceae* [32], and eukaryotes such as *Drosophila spp* [33]. Findings from an *in vivo* experimental model of septicemia did not show direct involvement of Aes in extraintestinal virulence. Moreover, we did not find any virulence-associated genes in the chromosomal region surrounding *aes*. Thus, esterase B does not appear to play



**Figure 4**  
**Models of the Aes protein variants.** Of the 38 polymorphic sites identified, only the 24 sites at the protein surface are represented. Polymorphic sites are in green for carboxylesterase type B<sub>1</sub> and red for type B<sub>2</sub>. The views A and B correspond to two opposite faces of the structure obtained by a rotation of 180° around the Y axis. Images were generated using PMG [57].

a direct role as a virulence factor in *E. coli* extraintestinal infection, but may serve as an informative marker of phylogeny.

## Methods

### Bacterial strains

We used *E. coli* K-12 MG1655 (phylogenetic group A) and CFT073 (phylogenetic group B2) reference strains, their mutants, K-12  $\Delta$ *aes* (obtained from the KEIO collection [34]) and CFT073  $\Delta$ *aes* (obtained during the course of this study) and the *aes* complemented mutant strains K-12  $\Delta$ *aes* pACS2 [28] and CFT073  $\Delta$ *aes* pACS2 for the identification of the esterase B-encoding gene. The strains K-12 MG1655, CFT073 and their *aes* mutants were also used for the investigation of the putative role of esterase B. We used the 72 strains from the *E. coli* reference (ECOR) collection, encompassing commensal and pathogenic strains representative of the genetic diversity of the species [35], and four additional pathogenic reference strains (536, UTI89, Sakai and EDL 933) for the sequencing of *aes*. The *E. fergusonii* strain ATCC 35469<sup>T</sup>, the most closely related species to *E. coli* [36], was used as an outgroup.

### Candidate gene selection using bioinformatic tools

The MaGe (Magnifying Genome) software program [14] was used for candidate gene selection and comparative analysis of genetic sequences surrounding *aes*. The MaGe

software program allows gene annotation and comparative analysis of available *E. coli* and closely related genomes, with visualisation of *E. coli* genome annotations enhanced by a synchronized display of synteny groups in the other genomes chosen for comparison [14]. Protein motifs and domains can be identified using the InterPro databank [37]. Candidate genes were obtained after the selection of proteins showing esterase motifs and compatible molecular weights (from 15,000 to 60,000 Da) and pI values (from 4.0 to 5.5) [9].

### Inactivation of the *aes* gene and control experiments

Inactivation was carried out as previously described [38], using a PCR product obtained with primers *aes*W1 (5'-TTTCATGGCAGTGGTTCCTTACAATGACGTAATTTGAAAGGAGTTTTGCGTTAGGCTGGAGCTGCTTC-3') and *aes*W2 (5'-GCCACGCCGGAACATATCGAAATGATGGCTAATCTTGTTGCCGCGTATCGCATATGAAATATCCTCCTTAG-3'). The PCR product contained (i) the FRT-flanked chloramphenicol acetyltransferase (*cat*) gene responsible for chloramphenicol resistance and (ii) the adjacent sequences homologous to the 5' and 3' flanking regions of *aes*. Inactivation of the *aes* gene was confirmed by PCR using the following primers: *aes*1 (5'-ACTGAGCGGCGAATGTTAACA-3') and *aes*2 (5'-ATTGTCTGGAGACGCTGGAA-3'), targeting sequences upstream and downstream from the *aes* gene,



respectively; and c1 (5'-TTATACGCAAGGCGACAAGG-3') and c2 (5'-GATCTTCCGTCACAGGTAGG-3'), targeting sequences within *cat* gene. The antibiotic resistance gene was removed using the pCP20 plasmid [38].

Complementation analysis of the mutant strains was carried out by electroporation of the multicopy plasmid pACS2 [28] containing the *aes* gene under its native promoter.

The esterase B phenotype was investigated by vertical slab polyacrylamide gel electrophoresis of crude extracts of parent type, mutant and complemented mutant strains, using 12% (w/v) acrylamide and discontinuous Tris/glycine buffer, pH 8.7. Esterase activity was detected by testing for the hydrolysis of 1-naphthyl acetate, as previously described [39].

#### **Nucleotide sequencing, sequence alignments and selection tests**

The *aes* gene was amplified by PCR, using the primers *aes1* and *aes2* (see above). The resulting 1250 bp PCR product was then sequenced by the Sanger method [40]. We compared *aes* sequences of 894 bp by sequence alignment using the ClustalW program [41]. The 72 *aes* sequences of the ECOR strains have GenBank accession numbers [GQ167069](#) to [GQ167140](#).

Amino-acid sequences deduced from the nucleotide sequences of *aes* were also analysed. After the generation of the maximum likelihood tree (see below), amino-acid substitutions for each branch of the *Aes* tree were identified by comparison of consensus sequences between different branches using the SEAVIEW program [42].

We tested for selection with code ML, implemented in PAML [43,44]. Using a maximum likelihood algorithm, PAML assigns likelihood scores to the data according to the various models of selection. Assignment of a higher likelihood score to a model incorporating selection than to a null model without selection and a significant likelihood ratio test are indicative of selection. The overall Ka/Ks ratio (or  $\omega$ , dN/dS), reflecting selective pressure on a protein-encoding gene, was estimated using the M0 model (one-ratio) [45] for all isolate sequences, with the *E. fergusonii* sequence as an outgroup. We also used the M1a (null) and M2a (positive selection) models [46,47] and the more powerful M7 and M8 models [46,48] to detect positive selection on specific codons (sites). We used the branch-site model A [47,49] for the B2/non-B2 partition. This model is based on the hypothesis that positive selection occurs only in certain branches/lineages.

#### **Tree reconstruction**

Maximum-likelihood phylogenetic trees were all reconstructed using the PHYML program [50] and the GTR+G+I model. This general model is not necessarily the most parsimonious one. However, we also wanted to obtain the bootstrap support values for each partition. Given that (i) the most parsimonious model may differ from one bootstrap resampling to another, and (ii) a very long computer processing time would be required to choose the best model among the 88 possible models for each of the 500 resamplings, we chose a less time-consuming strategy, simply selecting the most general model (GTR+G+I) for all resamplings. We checked that the trees remain the same for the different models, whether the most parsimonious or the most general model is used. Additional file 2: Table S2 gives the different parsimonious models, and their estimated parameters, selected by the Akaike criterion (jMODELTEST version 0.1.1, written by Posada [51], available at <http://darwin.uvigo.es/software/jmodeltest.html>).

#### **Tree comparisons**

We compared the phylogenetic history of *aes* to the phylogenetic history of the strains, based on the concatenated nucleotide sequences of six housekeeping genes (*trpA*, *trpB*, *pabB*, *putP*, *icd* and *polB*) and individual gene sequences, as described elsewhere [19]. Briefly, each phylogenetic tree  $T_i$  is firstly transformed into a tree-distance matrix  $D_i$ , the distance between two strains being the number of branches with positive length connecting them along the tree. The resulting tree distance matrix  $D_i$  allows the initial tree structure  $T_i$  to be recovered, independently of branch length. Two tree distance matrices ( $D_i$  and  $D_j$ ) (corresponding to two gene trees  $i$  and  $j$ ) can be compared by calculating the Euclidian distance between them ( $\delta_{ij}$ ) [52]. A low  $\delta_{ij}$  value means that the similarity between the two tree distance matrices  $D_i$  and  $D_j$  is high, and, consequently, that their tree structures  $T_i$  and  $T_j$  are close. As several gene tree structures are compared through this Euclidian distance metric, a new distance matrix  $\Delta$  can be built with the  $\delta_{ij}$  elements. This  $\Delta$  matrix can then be transformed into a "tree of gene trees" using a neighbour-joining algorithm [53].

To obtain a support value for each partition of this tree, we applied this same procedure to 500 bootstrapped sets of data, obtaining 500  $\Delta$  matrices and finally, a bootstrapped consensus "tree of gene trees". A high bootstrap support value separating two sets of gene trees allows incongruent sets of gene trees to be identified; however, a low bootstrap value suggests that the two sets of trees are not incongruent or that there is insufficient phylogenetic information to reject the hypothesis of incongruence. The "TreeOfTree" package is available from the website <http://bioinformatics.lif.univ-mrs.fr>.

### Protein structure modelling and analysis

Modelling of the Aes protein structure was based on comparison of the available models from MODBASE [54] with models previously obtained using the Tasser-Lite homology modelling server [55,56]. Although some differences were observed between the models obtained by these two independent approaches, in particular in the N terminus region, the best models proposed by Tasser-Lite and MODBASE were similar overall. Given that our aim was to determine only the approximate location of the Aes polymorphism within the protein structure, the MODBASE model was used for further analysis. The model was finally tested to ensure that it contains an active site consistent with esterase activity. This was carried out using the 3D MSS-Sites program <http://bioserv.rpbs.jussieu.fr/> [57] and the Catalytic Site Atlas [58]. Polymorphic sites were identified by sequence alignment using ClustalW [41] for B<sub>1</sub> and B<sub>2</sub> variants separately.

Theoretical pIs of Aes were calculated using the program compute pI of the ExPASy home page [http://www.expasy.ch/tools/pi\\_tool.html](http://www.expasy.ch/tools/pi_tool.html).

### In vitro growth studies

Competition studies of parent strains K-12 and CFT073, with their respective mutants K-12  $\Delta$ aes:Kan and CFT073  $\Delta$ aes:Cm (1/1 ratio), were performed in Luria Bertani (LB) and gluconate minimum liquid media. Gluconate minimal medium mimics the intestinal environment [59]. For each medium and for each competition experiment, bacteria were plated on media with or without the appropriate antibiotic and counted after 2 h (exponential phase) and 18 h (stationary phase). Each experiment was repeated twice. Biolog GN2 (Biolog, Inc., Hayward, CA) plates were used to detect carbon utilisation of 95 substrates. Utilisation of various C sources is coupled to the reduction of a tetrazolium dye and generation of a purple colour [60]. Each strain was grown in LB medium, washed and resuspended to an optical density of 0.01 at 600 nm in mineral medium [60]. Plates were incubated at 37°C and colour changes were measured by changes in optical density (measured on a Tecan microplate reader) at a wavelength of 600 nm. The cut-off for positive results was an optical density of 0.2.

### Septicaemia mouse model

A mouse model of systemic infection was used to assess the intrinsic virulence of the strains [11]. For each strain, 10 outbred female swiss OF1 mice (3-4 weeks old, 14-16 g) were challenged with a standardized subcutaneous bacterial inoculum ( $2 \times 10^8$  CFU of *E. coli*). Mortality was assessed over seven days following the challenge. Assays were performed using the CFT073 strain as a positive control (killing 10/10 mice), the K-12 strain as a negative control (killing 0/10 mice) [61] and the CFT073  $\Delta$ aes and

CFT073  $\Delta$ aes:Cm mutant strains. Data were analysed using the StatView software to obtain Kaplan-Meier curves; statistical analysis was carried out using the logrank test, with p values < 0.05 considered as significant.

### Authors' contributions

ML carried out the *in silico* and *in vitro* studies of Aes, participated to the *in vivo* studies of Aes and wrote the manuscript. CH contributed to the *in silico* studies. OC contributed to the sequencing. LG carried out *in vivo* studies. PD carried out tree comparisons. PT carried out the structural analysis of the protein. ED participated in the design of the study and wrote the manuscript. BP was involved in the initial design of the study and wrote the manuscript. All authors read and approved the final manuscript.

### Authors' Information

ML and CH are PhD students, OC is a research engineer, LG is a technician. PD, PT, ED and BP are researchers.

### Additional material

#### Additional file 1

**Supplemental figures.** A figure showing the electrophoretic patterns of esterases from various *E. coli* strains. Fig. S1: Polyacrylamide gel electrophoresis of Aes. Gels were stained using 1-naphthyl acetate hydrolysis to detect esterase activity. Esterases B was detected in strains K-12 (lane 1) and K-12  $\Delta$ aes pACS2 (lane 3), but not in strain K-12  $\Delta$ aes (lane 2), thus confirming that aes encodes esterase B. The dilution factor used for the crude extract of the complemented strain K-12  $\Delta$ aes pACS2 was 40 times greater than that of the parent and mutant strains due to overexpression of the aes gene on the plasmid. This did not allow us to detect esterase A in the complemented strain, whereas it was clearly visible for the K-12 and K-12  $\Delta$ aes strains. Fig. S2: Kaplan-Meier curves showing the comparative scores of virulence in the mouse model of septicaemia as a function of the presence or absence of Aes in the K-12 strain (blue line), CFT073 strain (green line and squares), CFT073  $\Delta$ aes:Cm strain (red line and circles) and CFT073  $\Delta$ aes strain (violet line and triangles). Mice inoculated with K-12 strain were still alive at day 7.

Click here for file

[<http://www.biomedcentral.com/content/supplementary/1471-2180-9-273-S1.PPT>]

#### Additional file 2

**Supplemental Tables.** A table describing the genes surrounding the aes gene. Table S1: List of genes of the strain CFT073 and their characteristics within a total region of 150 kbp surrounding the aes gene. The aes gene and its characteristics are highlighted in red. Table S2: Parsimonious models, and their estimated parameters, selected by the Akaike criterion (jMODELTEST version 0.1.1, written by Posada, 2008, available at <http://darwin.uvigo.es/software/jmodeltest.html>) used for each tree reconstruction.

Click here for file

[<http://www.biomedcentral.com/content/supplementary/1471-2180-9-273-S2.DOC>]

## Acknowledgements

ML was supported by the "Fondation pour la Recherche Médicale". We are grateful to Olivier Tenaillon for advice throughout this study, to Odile Bouvet for metabolic studies and Olivier Meilhac for protein electrophoresis. We acknowledge Evelyne Richet for providing the plasmid bearing the *aes* gene (pACS2).

## References

- Donnenberg M: **Escherichia coli virulence mechanisms of a versatile pathogen.** San Diego, California; 2002.
- Selander RK, Levin BR: **Genetic diversity and structure in Escherichia coli populations.** *Science* 1980, **210(4469)**:545-547.
- Herzer PJ, Inouye S, Inouye M, Whittam TS: **Phylogenetic distribution of branched RNA-linked multicopy single-stranded DNA among natural isolates of Escherichia coli.** *J Bacteriol* 1990, **172(11)**:6175-6181.
- Desjardins P, Picard B, Kaltenbock B, Elion J, Denamur E: **Sex in Escherichia coli does not disrupt the clonal structure of the population: evidence from random amplified polymorphic DNA and restriction-fragment-length polymorphism.** *J Mol Evol* 1995, **41(4)**:440-448.
- Escobar-Paramo P, Sabbagh A, Darlu P, Pradillon O, Vaury C, Denamur E, Lecointre G: **Decreasing the effects of horizontal gene transfer on bacterial phylogeny: the Escherichia coli case study.** *Mol Phylogenet Evol* 2004, **30(1)**:243-250.
- Wirth T, Falush D, Lan R, Colles F, Mensa P, Wieler LH, Karch H, Reeves PR, Maiden MC, Ochman H, et al.: **Sex and virulence in Escherichia coli: an evolutionary perspective.** *Mol Microbiol* 2006, **60(5)**:1136-1151.
- Gouillet P: **An esterase zymogram of Escherichia coli.** *J Gen Microbiol* 1973, **77(1)**:27-35.
- Gouillet P: **Esterase electrophoretic pattern relatedness between Shigella species and Escherichia coli.** *J Gen Microbiol* 1980, **117(2)**:493-500.
- Gouillet P, Picard B, Laget PF: **Purification and properties of carboxylesterase B of Escherichia coli.** *Ann Microbiol (Paris)* 1984, **135A(3)**:375-387.
- Gouillet P, Picard B: **Comparative electrophoretic polymorphism of esterases and other enzymes in Escherichia coli.** *J Gen Microbiol* 1989, **135(1)**:135-143.
- Picard B, Garcia JS, Gouriou S, Duriez P, Brahimi N, Bingen E, Elion J, Denamur E: **The link between phylogeny and virulence in Escherichia coli extraintestinal infection.** *Infect Immun* 1999, **67(2)**:546-553.
- Johnson JR, Delavari P, Kuskowski M, Stell AL: **Phylogenetic distribution of extraintestinal virulence-associated traits in Escherichia coli.** *J Infect Dis* 2001, **183(1)**:78-88.
- Bingen E, Picard B, Brahimi N, Mathy S, Desjardins P, Elion J, Denamur E: **Phylogenetic analysis of Escherichia coli strains causing neonatal meningitis suggests horizontal gene transfer from a predominant pool of highly virulent B2 group strains.** *J Infect Dis* 1998, **177(3)**:642-650.
- Vallenet D, Labarre L, Rouy Z, Barbe V, Bocs S, Cruveiller S, Lajus A, Pascal G, Scarpelli C, Medigue C: **MaGe: a microbial genome annotation system supported by synteny results.** *Nucleic Acids Res* 2006, **34(1)**:53-65.
- Peist R, Koch A, Bolek P, Sewitz S, Kolbus T, Boos W: **Characterization of the *aes* gene of Escherichia coli encoding an enzyme with esterase activity.** *J Bacteriol* 1997, **179(24)**:7679-7686.
- Picard B, Gouillet P, Krishnamoorthy R: **A novel approach to study of the structural basis of enzyme polymorphism. Analysis of carboxylesterase B of Escherichia coli as model.** *Biochem J* 1987, **241(3)**:877-881.
- Petersen L, Bollback JP, Dimmic M, Hubisz M, Nielsen R: **Genes under positive selection in Escherichia coli.** *Genome Res* 2007, **17(9)**:1336-1343.
- Chen SL, Hung CS, Xu J, Reigstad CS, Magrini V, Sabo A, Blasiar D, Bieri T, Meyer RR, Ozersky P, et al.: **Identification of genes subject to positive selection in uropathogenic strains of Escherichia coli: a comparative genomics approach.** *Proc Natl Acad Sci USA* 2006, **103(15)**:5977-5982.
- Schubert S, Darlu P, Clermont O, Wieser A, Magistro G, Hoffmann C, Weinert K, Tenaillon O, Matic I, Denamur E: **Role of intraspecific recombination in the spread of pathogenicity islands within the Escherichia coli species.** *PLoS Pathog* 2009, **5(1)**:e1000257.
- Potter AJ, Kidd SP, Edwards JL, Falsetta ML, Apicella MA, Jennings MP, McEwan AG: **Esterase D is essential for protection of Neisseria gonorrhoeae against nitrosative stress and for bacterial growth during interaction with cervical epithelial cells.** *J Infect Dis* 2009, **200(2)**:273-278.
- Garau G, Lemaire D, Vernet T, Dideberg O, Di Guilmi AM: **Crystal structure of phosphorylcholine esterase domain of the virulence factor choline-binding protein e from Streptococcus pneumoniae: new structural features among the metallo-beta-lactamase superfamily.** *J Biol Chem* 2005, **280(31)**:28591-28600.
- Hommais F, Gouriou S, Amarin C, Bui H, Rahimy MC, Picard B, Denamur E: **The FimH A27V mutation is pathoadaptive for urovirulence in Escherichia coli B2 phylogenetic group isolates.** *Infect Immun* 2003, **71(6)**:3619-3622.
- Lane MC, Mobley HL: **Role of P-fimbrial-mediated adherence in pyelonephritis and persistence of uropathogenic Escherichia coli (UEPC) in the mammalian kidney.** *Kidney Int* 2007, **72(1)**:19-25.
- Plainvert C, Bidet P, Peigne C, Barbe V, Medigue C, Denamur E, Bingen E, Bonacorsi S: **A new O-antigen gene cluster has a key role in the virulence of the Escherichia coli meningitis clone O45:K1:H7.** *J Bacteriol* 2007, **189(23)**:8528-8536.
- Achtman M, Heuzenroeder M, Kusecek B, Ochman H, Caugant D, Selander RK, Vaisanen-Rhen V, Korhonen TK, Stuart S, Orskov F, et al.: **Clonal analysis of Escherichia coli O2:K1 isolated from diseased humans and animals.** *Infect Immun* 1986, **51(1)**:268-276.
- Joly N, Danot O, Schlegel A, Boos W, Richet E: **The Aes protein directly controls the activity of MalT, the central transcriptional activator of the Escherichia coli maltose regulon.** *J Biol Chem* 2002, **277(19)**:16606-16613.
- Mandrich L, Caputo E, Martin BM, Rossi M, Manco G: **The Aes protein and the monomeric alpha-galactosidase from Escherichia coli form a non-covalent complex. Implications for the regulation of carbohydrate metabolism.** *J Biol Chem* 2002, **277(50)**:48241-48247.
- Schlegel A, Danot O, Richet E, Ferenci T, Boos W: **The N terminus of the Escherichia coli transcription activator MalT is the domain of interaction with MalY.** *J Bacteriol* 2002, **184(11)**:3069-3077.
- Liu M, Durfee T, Cabrera JE, Zhao K, Jin DJ, Blattner FR: **Global transcriptional programs reveal a carbon source foraging strategy by Escherichia coli.** *J Biol Chem* 2005, **280(16)**:15921-15927.
- Le Gall T, Darlu P, Escobar-Paramo P, Picard B, Denamur E: **Selection-driven transcriptome polymorphism in Escherichia coli Shigella species.** *Genome Res* 2005, **15(2)**:260-268.
- Touchon M, Hoede C, Tenaillon O, Barbe V, Baeriswyl S, Bidet P, Bingen E, Bonacorsi S, Bouchier C, Bouvet O, et al.: **Organised genome dynamics in the Escherichia coli species results in highly diverse adaptive paths.** *PLoS Genet* 2009, **5(1)**:e1000344.
- Gouillet P, Picard B: **The electrophoretic polymorphism of bacterial esterases.** *FEMS Microbiol Rev* 1995, **16(1)**:7-31.
- Babcock CS, Anderson WW: **Molecular evolution of the Sex-Ratio inversion complex in Drosophila pseudoobscura: analysis of the Esterase-5 gene region.** *Mol Biol Evol* 1996, **13(2)**:297-308.
- Baba T, Ara T, Hasegawa M, Takai Y, Okumura Y, Baba M, Datsenko KA, Tomita M, Wanner BL, Mori H: **Construction of Escherichia coli K-12 in-frame, single-gene knockout mutants: the Keio collection.** *Mol Syst Biol* 2006, **2**:2006 0008.
- Ochman H, Selander RK: **Standard reference strains of Escherichia coli from natural populations.** *J Bacteriol* 1984, **157(2)**:690-693.
- Lawrence JG, Ochman H, Hartl DL: **Molecular and evolutionary relationships among enteric bacteria.** *J Gen Microbiol* 1991, **137(8)**:1911-1921.
- Apweiler R, Attwood TK, Bairoch A, Bateman A, Birney E, Biswas M, Bucher P, Cerutti L, Corpet F, Croning MD, et al.: **The InterPro database, an integrated documentation resource for protein families, domains and functional sites.** *Nucleic Acids Res* 2001, **29(1)**:37-40.

38. Datsenko KA, Wanner BL: **One-step inactivation of chromosomal genes in *Escherichia coli* K-12 using PCR products.** *Proc Natl Acad Sci USA* 2000, **97(12)**:6640-6645.
39. Lanz WW, Williams PP: **Characterization of esterases produced by a ruminal bacterium identified as *Butyrivibrio fibrisolvens*.** *J Bacteriol* 1973, **113(3)**:1170-1176.
40. Sanger F, Nicklen S, Coulson AR: **DNA sequencing with chain-terminating inhibitors.** *Proc Natl Acad Sci USA* 1977, **74(12)**:5463-5467.
41. Chenna R, Sugawara H, Koike T, Lopez R, Gibson TJ, Higgins DG, Thompson JD: **Multiple sequence alignment with the Clustal series of programs.** *Nucleic Acids Res* 2003, **31(13)**:3497-3500.
42. Galtier N, Gouy M, Gautier C: **SEAVIEW and PHYLO\_WIN: two graphic tools for sequence alignment and molecular phylogeny.** *Comput Appl Biosci* 1996, **12(6)**:543-548.
43. Yang Z: **PAML: a program package for phylogenetic analysis by maximum likelihood.** *Comput Appl Biosci* 1997, **13(5)**:555-556.
44. Yang Z: **PAML 4: phylogenetic analysis by maximum likelihood.** *Mol Biol Evol* 2007, **24(8)**:1586-1591.
45. Yang Z, Nielsen R, Hasegawa M: **Models of amino acid substitution and applications to mitochondrial protein evolution.** *Mol Biol Evol* 1998, **15(12)**:1600-1611.
46. Wong WS, Yang Z, Goldman N, Nielsen R: **Accuracy and power of statistical methods for detecting adaptive evolution in protein coding sequences and for identifying positively selected sites.** *Genetics* 2004, **168(2)**:1041-1051.
47. Yang Z, Wong WS, Nielsen R: **Bayes empirical bayes inference of amino acid sites under positive selection.** *Mol Biol Evol* 2005, **22(4)**:1107-1118.
48. Swanson WJ, Nielsen R, Yang Q: **Pervasive adaptive evolution in mammalian fertilization proteins.** *Mol Biol Evol* 2003, **20(1)**:18-20.
49. Zhang J, Nielsen R, Yang Z: **Evaluation of an improved branch-site likelihood method for detecting positive selection at the molecular level.** *Mol Biol Evol* 2005, **22(12)**:2472-2479.
50. Guindon S, Gascuel O: **A simple, fast, and accurate algorithm to estimate large phylogenies by maximum likelihood.** *Syst Biol* 2003, **52(5)**:696-704.
51. Posada D: **jModelTest: phylogenetic model averaging.** *Mol Biol Evol* 2008, **25(7)**:1253-1256.
52. Penny DWE, Steel MA: **Trees from languages and genes are very similar.** *Syst Biol* 1993, **42**:382-384.
53. Saitou N, Nei M: **The neighbor-joining method: a new method for reconstructing phylogenetic trees.** *Mol Biol Evol* 1987, **4(4)**:406-425.
54. Pieper U, Eswar N, Davis FP, Braberg H, Madhusudhan MS, Rossi A, Marti-Renom M, Karchin R, Webb BM, Eramian D, et al.: **MODBASE: a database of annotated comparative protein structure models and associated resources.** *Nucleic Acids Res* 2006:D291-295.
55. Skolnick J, Kihara D, Zhang Y: **Development and large scale benchmark testing of the PROSPECTOR\_3 threading algorithm.** *Proteins* 2004, **56(3)**:502-518.
56. Zhang Y, Skolnick J: **Automated structure prediction of weakly homologous proteins on a genomic scale.** *Proc Natl Acad Sci USA* 2004, **101(20)**:7594-7599.
57. Alland C, Moreews F, Boens D, Carpentier M, Chiusa S, Lonquety M, Renault N, Wong Y, Cantalloube H, Chomilier J, et al.: **RPBS: a web resource for structural bioinformatics.** *Nucleic Acids Res* 2005:W44-49.
58. Porter CT, Bartlett GJ, Thornton JM: **The Catalytic Site Atlas: a resource of catalytic sites and residues identified in enzymes using structural data.** *Nucleic Acids Res* 2004:D129-133.
59. Chang DE, Smalley DJ, Tucker DL, Leatham MP, Norris WE, Stevenson SJ, Anderson AB, Grissom JE, Laux DC, Cohen PS, et al.: **Carbon nutrition of *Escherichia coli* in the mouse intestine.** *Proc Natl Acad Sci USA* 2004, **101(19)**:7427-7432.
60. Bochner BR, Gadzinski P, Panomitros E: **Phenotype microarrays for high-throughput phenotypic testing and assay of gene function.** *Genome Res* 2001, **11(7)**:1246-1255.
61. Johnson JR, Clermont O, Menard M, Kuskowski MA, Picard B, Denamur E: **Experimental mouse lethality of *Escherichia coli* isolates, in relation to accessory traits, phylogenetic group, and ecological source.** *J Infect Dis* 2006, **194(8)**:1141-1150.

Publish with **BioMed Central** and every scientist can read your work free of charge

"BioMed Central will be the most significant development for disseminating the results of biomedical research in our lifetime."

Sir Paul Nurse, Cancer Research UK

Your research papers will be:

- available free of charge to the entire biomedical community
- peer reviewed and published immediately upon acceptance
- cited in PubMed and archived on PubMed Central
- yours — you keep the copyright

Submit your manuscript here:  
[http://www.biomedcentral.com/info/publishing\\_adv.asp](http://www.biomedcentral.com/info/publishing_adv.asp)

