



HAL
open science

Stimulation of angiogenesis resulting from cooperation between macrophages and MDA-MB-231 breast cancer cells: proposed molecular mechanism and effect of tetrathiomolybdate.

Ulrich Joimel, Caroline Gest, Jeannette Soria, Linda-Louise Pritchard, Jérôme Alexandre, Marc Laurent, Emmanuel Blot, Lionel Cazin, Jean-Pierre Vannier, Rémi Varin, et al.

► To cite this version:

Ulrich Joimel, Caroline Gest, Jeannette Soria, Linda-Louise Pritchard, Jérôme Alexandre, et al.. Stimulation of angiogenesis resulting from cooperation between macrophages and MDA-MB-231 breast cancer cells: proposed molecular mechanism and effect of tetrathiomolybdate.. *BMC Cancer*, 2010, 10 (1), pp.375. 10.1186/1471-2407-10-375 . inserm-00617229

HAL Id: inserm-00617229

<https://inserm.hal.science/inserm-00617229>

Submitted on 26 Aug 2011

HAL is a multi-disciplinary open access archive for the deposit and dissemination of scientific research documents, whether they are published or not. The documents may come from teaching and research institutions in France or abroad, or from public or private research centers.

L'archive ouverte pluridisciplinaire **HAL**, est destinée au dépôt et à la diffusion de documents scientifiques de niveau recherche, publiés ou non, émanant des établissements d'enseignement et de recherche français ou étrangers, des laboratoires publics ou privés.

RESEARCH ARTICLE

Open Access

Stimulation of angiogenesis resulting from cooperation between macrophages and MDA-MB-231 breast cancer cells: proposed molecular mechanism and effect of tetrathiomolybdate

Ulrich Joimel^{1*}, Caroline Gest¹, Jeannette Soria^{2,3}, Linda-Louise Pritchard⁴, Jérôme Alexandre^{2,5}, Marc Laurent¹, Emmanuel Blot¹, Lionel Cazin¹, Jean-Pierre Vannier¹, Rémi Varin¹, Hong Li^{1†}, Claudine Soria^{1†}

Abstract

Background: Infiltration by macrophages ($M\phi$) indicates a poor prognosis in breast cancers, in particular by inducing angiogenesis. Our study aimed 1) to investigate the mechanism by which cooperation between $M\phi$ and aggressive breast cancer cells (MDA-MB-231) induces angiogenesis; 2) to examine the effect of tetrathiomolybdate (TM) on this angiogenic activity.

Methods: $M\phi$ coincubated with MDA-MB-231 were used as a model to mimic the inflammatory microenvironment. Angiogenesis induced by the culture media was tested in the chick chorioallantoic membrane (CAM). $M\phi$ phenotype was evaluated by 1) expression of the M1 marker CD80, and secretion of interleukin 10 (IL-10), an M2 marker; 2) capacity to secrete Tumour Necrosis Factor α (TNF α) when stimulated by lipopolysaccharide/interferon γ (LPS/IFN γ); 3) ability to induce MDA-MB-231 apoptosis. To explore the molecular mechanisms involved, cytokine profiles of conditioned media from MDA-MB-231, $M\phi$ and the coculture were characterised by an antibody cytokine array. All experiments were carried out both in presence and in absence of TM.

Results: Incubation of $M\phi$ with MDA-MB-231 induced a pro-angiogenic effect in the CAM. It emerged that the angiogenic activity of the coculture is due to the capacity of $M\phi$ to switch from M1 $M\phi$ towards M2, probably due to an increase in Macrophage Colony Stimulating Factor. This M1-M2 switch was shown by a decreased expression of CD80 upon LPS/IFN γ stimulation, an increased secretion of IL-10, a decreased secretion of TNF α in response to LPS/IFN γ and an inability to potentiate apoptosis. At the molecular level, the angiogenic activity of the coculture medium can be explained by the secretion of CXC chemokines/ELR⁺ and CC chemokines. Although TM did not modify either the M2 phenotype in the coculture or the profile of the secreted chemokines, it did decrease the angiogenic activity of the coculture medium, suggesting that TM inhibited angiogenic activity by interfering with the endothelial cell signalling induced by these chemokines.

Conclusions: Cooperation between $M\phi$ and MDA-MB-231 transformed M1 $M\phi$ to an angiogenic, M2 phenotype, attested by secretion of CXC chemokines/ELR⁺ and CC chemokines. TM inhibited this coculture-induced increase in angiogenic activity, without affecting either $M\phi$ phenotype or cytokine secretion profiles.

* Correspondence: ulrich.joimel@gmail.com

† Contributed equally

¹Laboratoire M.E.R.C.I - EA 3829, Faculté de Médecine et de Pharmacie, Université de Rouen, 22 Bd Gambetta, 76183 Rouen cedex, France

Background

It has become clear that analysis of tumour stroma is of crucial importance to better understanding cancer progression. Cancer cell growth and invasion of surrounding tissues, as well as the metastatic process itself, require the support of the cancer stroma.

Macrophages ($M\phi$) form the major component of the inflammatory infiltrate observed in tumours [1]. They exhibit a distinct phenotype and are termed Tumour-Associated Macrophages (TAM) [2]. Monocytes enter tumours through blood vessels, and a number of tumour-derived chemoattractants are thought to ensure this ongoing recruitment [3,4]. This is also supported by the observation that the levels of chemoattractant proteins in tumours correlate positively with the numbers of TAMs present in these tumours [5]. Classically, it has been accepted that fully activated $M\phi$ have the potential to inhibit tumour development. TAMs that express an M1 phenotype are characterized by a proinflammatory cytokine profile and expression of Major Histocompatibility Complex molecules. They are capable of killing tumour cells mainly by secreting inflammatory cytokines such as Tumour Necrosis Factor α (TNF α). Although associated with better prognosis, immune responses to a tumour are often weak and not able to destroy the tumour completely [6], suggesting that tumours have developed mechanisms for escaping immune surveillance. Further, the presence of $M\phi$ in breast cancer is associated with a poor prognosis [7-10] due to the role of TAMs as promoters of tumour progression and invasion. Increasing evidence also indicates that TAMs enhance angiogenesis, contributing to cancer cell proliferation and dissemination [11-14]. This could explain the positive relationship between high levels of TAMs and breast cancer aggressiveness and their correlation with high vessel density as reported in the literature [15,16].

We have previously shown that the deleterious role of $M\phi$ in cancer progression is due to the cooperation of monocytes with cancer cells [17]. The modifications of $M\phi$ functions in tumours could be explained by a switch of M1 $M\phi$ to M2 $M\phi$, which have protumoral properties, including promotion of angiogenesis, matrix remodelling and suppression of adaptive immunity [18,19]. This indicates a functional plasticity and an *in situ* $M\phi$ reprogramming. The biological mechanism for this switch remains controversial. For Hagemann *et al.* [20,21] and Greten *et al.* [22], the malignant epithelial cancer cells drive nuclear factor kappa-light-chain-enhancer of activated B cells (NF- κ B) activation by TAMs in a way that maintains their immunosuppressive M2 phenotype. Consequently, the blockage of NF- κ B might be expected to switch the M2 $M\phi$ to an M1 phe-

notype. Hence these studies would predict a potential anti-tumour effect of NF- κ B inhibitors by the restoration of M1 immunity, providing a cytotoxic activity. However, the role of NF- κ B in this switch is contested by others. Saccani *et al.* [23] and Bohuslav J *et al.* [24] conversely proposed that during the M1 to M2 $M\phi$ switch, an inactivation of NF- κ B occurs, explaining the absence of TNF α production when $M\phi$ are stimulated by lipopolysaccharide (LPS). This could be due to a massive nuclear localization of the p50 NF- κ B protein resulting in p50/p50 homodimers. Since the p50 homodimers lack the transactivation domain, they compete with the canonical p65/p50 heterodimers for the NF- κ B binding sites on the inflammatory gene promoters, thereby blocking p65/p50 promoter binding and gene transcription.

Thus, although the relationship between inflammation and cancer aggressivity is widely accepted, many of the molecular and cellular mechanisms mediating this relationship remain unclear. The current study was designed to determine the role of the cooperation between $M\phi$ and the aggressive breast cancer cells MDA-MB-231 in angiogenesis promotion. To elucidate the mechanism, we mimicked the inflammatory tumour environment by a coincubation of MDA-MB-231 cells with $M\phi$. Angiogenic activity of the coculture medium was compared with the culture medium from both MDA-MB-231 and $M\phi$ cultured individually in the chick chorioallantoic membrane (CAM) model.

We first determined that the cooperation between $M\phi$ and cancer cells led to a switch of M1 $M\phi$ to the M2 phenotype, known to be angiogenic. Then we explored the potential molecular mechanisms responsible for this angiogenic activity. Results indicate that a wide repertoire of chemokines (CXC-ELR⁺ and CC-chemokines) may drive the neoangiogenesis induced by the cooperative effects of cancer cells and $M\phi$. Finally, tetrathiomolybdate (TM), an oral copper-depleting agent that has been shown to inhibit tumour-cell-induced angiogenesis [25-27] was tested in our model of cooperation between $M\phi$ and MDA-MB-231. This was important to check because the effect of TM has not previously been analysed in this context of inflammation in cancers.

Methods

Cell Culture and Reagents

MDA-MB-231 cells were maintained in RPMI 1640 medium (Eurobio) supplemented with 100 U/ml penicillin (Eurobio), 100 μ g/ml streptomycin (Eurobio), 2 mM L-glutamine (Eurobio) and 10% heat-inactivated foetal calf serum (FCS, Eurobio). All incubations were carried out in a humidified atmosphere at 37°C and 5% CO₂. LPS was purchased from Sigma-Aldrich and human

recombinant interferon γ (IFN γ) from R&D Systems. TM is a gift from Professor F. Sécheresse, Institut Lavoisier (CNRS UMR 8637, Versailles).

Preparation of M ϕ

Human monocytes were isolated as described [28]. Briefly, monocytes were isolated from buffy coats using lymphocyte separation medium (Eurobio). Peripheral blood mononuclear cells were washed three times with phosphate-buffered saline (PBS, Eurobio) and allowed to adhere to Primaria™ cell culture flasks (Becton Dickinson) for 1 h at 37°C. Nonadherent cells were removed. Monocytes were then incubated in AIM-V® medium (Gibco) for 7 days, as recommended for long-term cultivation of human M ϕ [29]. Medium was changed, and nonadherent cells discarded, every 2 days. We found that all monocyte-derived cells isolated this way express the marker CD14, which can be used to distinguish them from cancer cells.

Coculture of MDA-MB-231 cancer cells with M ϕ

Primary human monocyte-derived M ϕ were detached using a 30 min incubation with Accutase™ enzyme cell detachment medium (eBioscience). 2.5×10^3 MDA-MB-231 cells were plated in 96-well culture dishes (7.8×10^4 cells/cm²) and allowed to adhere for 6 h at 37°C. More than 95% of the cells adhered to the wells. Then the same number of M ϕ was added, and cocultures were maintained for 5 days in RPMI 1640 medium supplemented with 100 U/ml penicillin, 100 μ g/ml streptomycin, 2 mM L-glutamine and 10% heat-inactivated FCS. Spent medium was replaced by fresh medium every 24 h. Control groups consisted of 2.5×10^4 MDA-MB-231 alone and of 2.5×10^4 M ϕ alone cultured under the same conditions. Where indicated, after 5 days of incubation the cultures were treated with 1 μ g/ml LPS and 5 ng/ml IFN γ for 24 h to activate the M ϕ . Cultures approached but did not reach confluence during this time.

In vivo angiogenesis assays using the CAM model

All MDA-MB-231 and M ϕ cultures were carried out both in presence and in absence of 5 μ M TM (final concentration). The CAM assay was performed as described by others [30], using conditioned media collected from the cocultures and from individual MDA-MB-231 and M ϕ cultures during the final 24 h of incubation, and stored at -80°C until use. Briefly, fertilized chick eggs (White Leghorn) purchased from the Ferme Avicole HAAS, Kaltenhouse, France, were incubated for 4 days at 37°C and a relative humidity of 80%. During this period, the eggs were positioned with the pointed end down and rotated several times. After this incubation, the shells were cracked open and the embryo eggs placed in plastic culture dishes (Merck-Eurolab) according to an

established shell-less culture technique exposing the CAM to a direct access for experimental manipulation. At day 6 of embryonic development, angiogenic areas were circled with a silicon ring (Weber Métaux). To induce angiogenesis, 33 μ l of either the culture medium to be tested or recombinant human basic Fibroblast Growth Factor (bFGF) (R&D Systems) (positive control) were next placed inside the rings on successive days for 3 days. Treated areas were photographed and the extent of angiogenesis evaluated 24 h after the last treatment: the total number of vessels which had sprouted from the primary vessels of the CAM and the total length of the neoangiogenesis were determined using Saisam software (Microvision Instruments).

Characterization of M ϕ by immunofluorescence analysis

Cultures and cocultures were carried out as described above, except that each cell population was seeded into 8-well Lab-Tek™ II -CC2™ chambers (Nunc) at a density of 5.7×10^4 cells/cm². Five days later, all cultures were treated with 1 μ g/ml LPS and 5 ng/ml IFN γ for 24 h before washing and labelling. M ϕ were identified by examining the expression of CD14, which is a differentiation antigen expressed by monocytes and M ϕ , and of CD80, which is a marker of M1 M ϕ [31]. Expression of these molecules was evaluated by immunofluorescence both before and after activation with 1 μ g/ml LPS and 5 ng/ml IFN γ for 24 h. Breast cancer cells were identified by cytokeratin 19 (CK 19) expression.

Briefly, cells were fixed for 15 min in 4% paraformaldehyde/PBS, then washed and incubated for 30 minutes with PBS containing 5% bovine serum albumin (BSA). For M ϕ identification, samples were incubated with rabbit anti-CD14 polyclonal antibodies at 2 μ g/ml (Abcam) or biotinylated monoclonal anti-human CD80 at 2.5 μ g/ml (Ansell Corporation) for 60 min at room temperature. For identification of breast cancer cells, they were then washed in PBS/1% BSA before incubation with monoclonal anti-human CK 19 (Dako) diluted 1:50 in PBS/1% BSA. Following washing in PBS with 1% BSA, cells were incubated with, respectively, DyLight 488™-conjugated goat anti-rabbit IgG secondary antibody or DyLight 549™-conjugated streptavidin (Thermoscientific) for 60 minutes at room temperature or else Texas-Red labelled goat anti-mouse Ig diluted 1:2000 (AbD Serotec). After final washing, cover slips were mounted with mounting medium (Immunoconcepts). Samples were photographed using a Leica DM 5500B. Controls prepared without primary antibodies confirmed that, under the conditions used, background fluorescence was negligible.

Ability of LPS + IFN γ -activated M ϕ to secrete TNF α

For these experiments, cells cultured as described above were activated on day 5 with 1 μ g/ml LPS and 5 ng/ml

IFN γ for 24 h. These 24-h culture supernatants were then collected and tested for TNF α . Concentrations of TNF α within the supernatants were determined by human TNF α Enzyme-Linked Immunosorbent Assay (ELISA) Ready-Set-go! (eBioscience) using the standard protocol given by the manufacturer, and compared to those of supernatants from non-activated control cultures. TNF α concentrations are expressed in pg/ml. 3 independent experiments were carried out both in presence and in absence of 5 μ M TM.

Ability of M ϕ to induce apoptosis in cocultures

M ϕ and MDA-MB-231 cells were cultured separately and together (coculture) as indicated above for 5 days, in presence or absence of 5 μ M TM. Apoptosis was measured using the ELISAPLUS cell death detection kit (Roche Diagnostics). Briefly, apoptosis-induced Desoxy-Ribonucleic Acid (DNA) fragmentation was evaluated by quantifying the histone-complexed DNA fragments (nucleosomes) found in the cytoplasm, as indicated by the manufacturer. Results are expressed as the adjusted absorbance, A405 minus A490.

Ability of M ϕ to secrete interleukin 10 (IL-10)

For these experiments, supernatants were harvested on day 5 from cells cultured as described above. These 24-h culture supernatants were then tested for IL-10. Concentrations of IL-10 within the supernatants were determined by human IL-10 ELISA Ready-Set-go! (eBioscience) using the standard protocol given by the manufacturer. IL-10 concentrations are expressed in pg/ml. 3 independent experiments were carried out both in presence and in absence of 5 μ M TM.

Cytokine array

The Human Cytokine Antibody Array III kit (RayBiotech) was used to evaluate 42 different cytokines: Epithelial Neutrophil-Activating peptide-78 (ENA-78), Granulocyte Colony-Stimulating Factor (GCSF), Granulocyte-Macrophage Colony Stimulating Factor (GM-CSF), Growth related oncoprotein (GRO), GRO α , I-309, IL-1 α , IL-1 β , IL-2, IL-3, IL-4, IL-5, IL-6, IL-7, IL-8, IL-10, IL-12 p40p70, IL-13, IL-15, IFN γ , Monocyte Chemoattractant Protein-1 (MCP-1), MCP-2, MCP-3, Macrophage Colony Stimulating Factor (MCSF), Macrophage-Derived Chemokine (MDC), Monokine induced by IFN γ (MIG), Macrophage Inflammatory Protein-1 α (MIP-1 α), Regulated on Activation Normal T cell Expressed and Secreted (RANTES), human Stem Cell Factor (SCF), Stromal-Derived Factor-1 (SDF-1), Thymus and Activation-Regulated Chemokine (TARC), Transforming Growth Factor- β 1 (TGF- β 1), TNF α , TNF- β , Epidermal Growth Factor (EGF), Insulin-like Growth Factor-I (IGF-I), Angiogenin, Oncostatin M, Thrombopoietin,

Vascular Endothelial Growth Factor (VEGF), Platelet-Derived Growth Factor-BB (PDGF BB) and Leptin. GRO detects CXC Ligand 1 (CXCL1), CXCL2 and CXCL3; GRO α detects only CXCL1. VEGF detects VEGF-165 and VEGF-121.

Briefly, 1 ml of undiluted supernatants harvested on day 5 from cells cultured as described above were incubated with arrayed antibody membranes, which were then exposed to the specific biotin-antibody cocktail, following the manufacturer's instructions. Signals were detected using labelled streptavidin by exposure on X-ray films. The relative amount of each cytokine present in the coculture medium is presented as the fold increase of the spot intensity in the coculture medium as compared to that of the culture medium of either M ϕ cultured alone (for cytokines which were not secreted by MDA-MB-231), or MDA-MB-231 cultured alone (for cytokines which were not secreted by M ϕ), or else the sum of the two (for cytokines secreted separately by both M ϕ and MDA-MB-231 when cultured individually). The area density of the spots was evaluated using imageJ (written in Java) which was downloaded from the National Centre for Biotechnology Information. Signals were normalized against the positive controls across membranes. Cytokine array experiments were carried out in duplicate.

Results

Angiogenic activity of the M ϕ + MDA-MB-231 coculture medium in the CAM

We found that the conditioned medium from cocultures of M ϕ + MDA-MB-231 induced a more potent angiogenic response in the CAM than that induced by conditioned medium from either M ϕ or MDA-MB-231 cells cultured alone, as shown by the formation of a secondary dense thin capillary network only after treatment with coculture medium (Figure 1A). Indeed, both the number and the cumulative length of the capillaries that sprouted from CAM vessels were significantly increased by the coculture medium (Figure 1-B) ($p < 0.05$). The positive control was bFGF.

Cell densities on day 0 and after 5 days of culture (day 5)

When plating the cells on day 0, more than 95% were adherent (both cancer cells and M ϕ). We next determined the relative proportions of the two cell types in the coculture after 5 days, because MDA-MB-231 is a cell line which proliferates in culture, whereas M ϕ , which are primary cells, do not. We found that in 5 days the number of MDA-MB-231 increased 5.3-fold (standard error of the mean (SEM), ± 0.35) (not shown). In contrast, M ϕ numbers did not change during the 5 days of incubation, and fewer than 10% were found detached, floating in the supernatants. After the

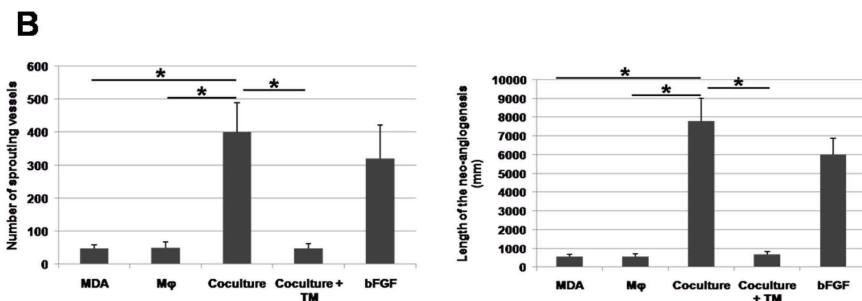
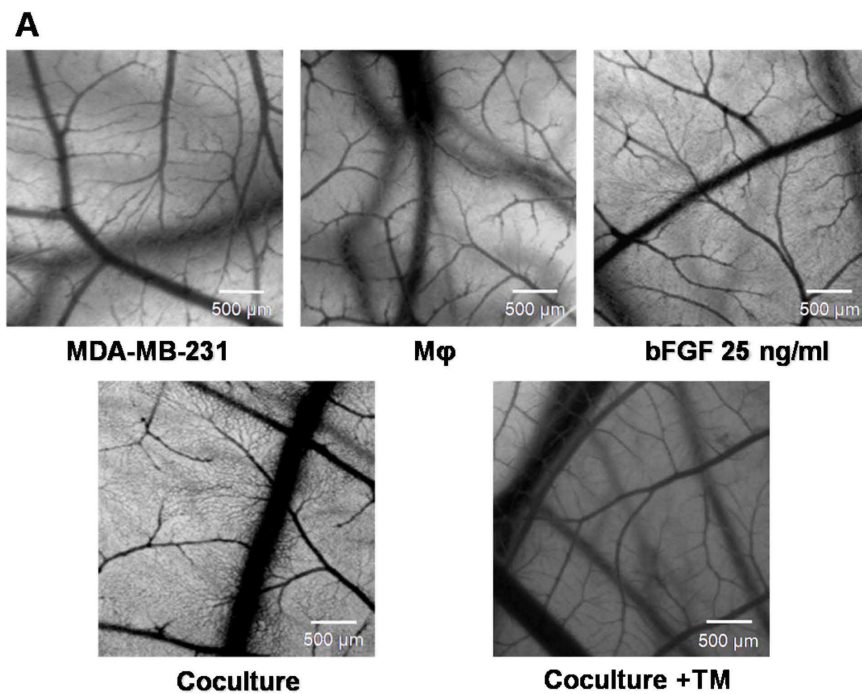


Figure 1 Effect of the cooperation between Mφ and MDA-MB-231 cells on vascularisation of the CAM. MDA-MB-231 cells were seeded at a density of 7.8×10^4 cells/cm², with (coculture) or without the same number of Mφ. Spent medium was replaced by fresh medium every day. After 5 days of incubation, the conditioned media corresponding to the final 24 h of culture were tested for their angiogenic activity as follows: each day, for 3 days, 33 μL of these media were introduced into silicon rings placed on CAMs from 6-day-old chick embryos. bFGF (25 ng/ml) was used as positive control. **Panel A:** Treated areas were photographed 24 h after the last treatment. Note the increase in the CAM of a denser secondary capillary network induced by the coculture medium, in comparison to that induced by conditioned medium from either MDA-MB-231 or Mφ cultured alone. This secondary capillary network was inhibited by the addition of 5 μM TM during the coculture. **Panel B:** total number of vessels that sprouted from the primary vessels of the CAM and total length of the neoangiogenesis. Mean of 3 independent experiments ± SEM. * p < 0.05, Mann-Whitney U test.

5 days of coculture, the ratio of CK 19⁺ (cancer cells) to Mφ was also determined. It was found that 15% of the cells were Mφ, and 85% MDA-MB-231 (not shown).

Modifications of Mφ phenotype induced by coculture

Because the switch of M1 Mφ to the M2 phenotype is known to induce angiogenesis, we investigated the possibility of an M1-M2 switch when Mφ were coincubated

with MDA-MB-231 cells. Immunolabelling of Mφ cultured in presence or absence of MDA-MB-231 showed that all cells isolated as Mφ are CD14 positive. These CD14⁺ cells were found to express CD80 only when activated by LPS/IFNγ, indicating that activation could stimulate them to differentiate towards an M1 phenotype. However, in the cocultures of Mφ with MDA-MB-231 cells, expression of CD80 by these activated Mφ was lost (Figure 2).

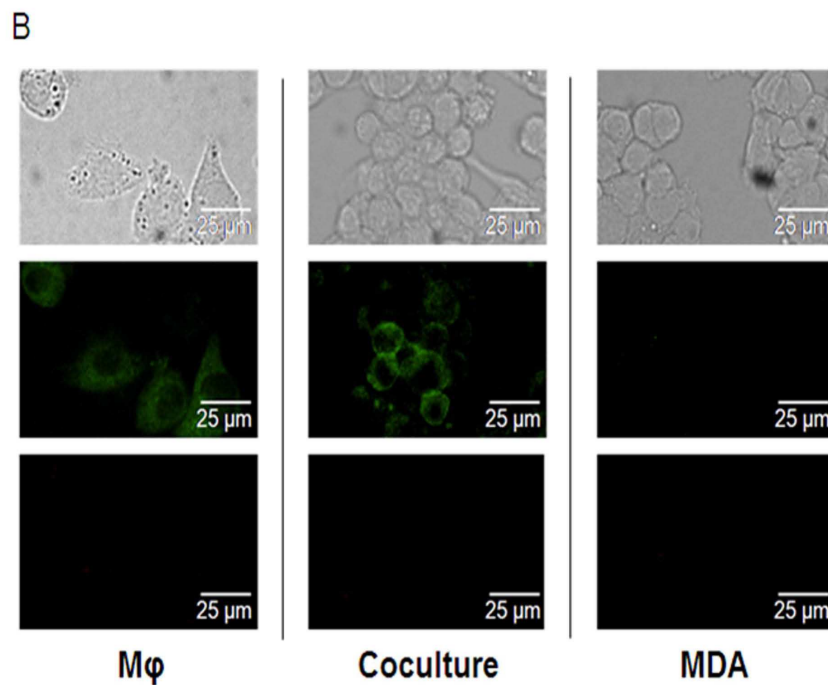
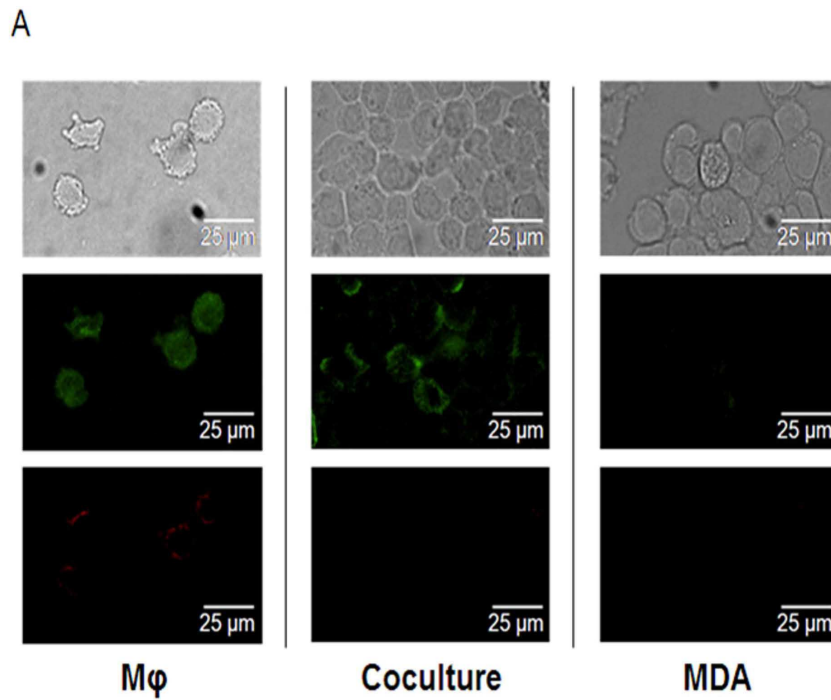
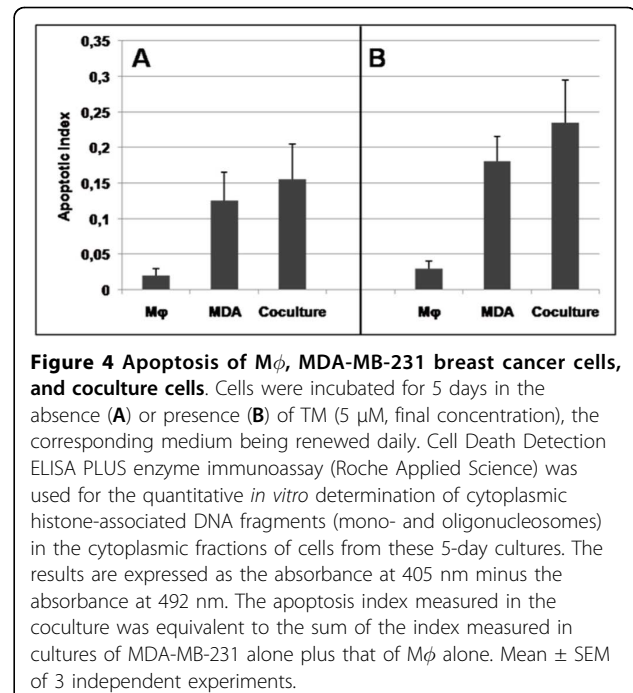
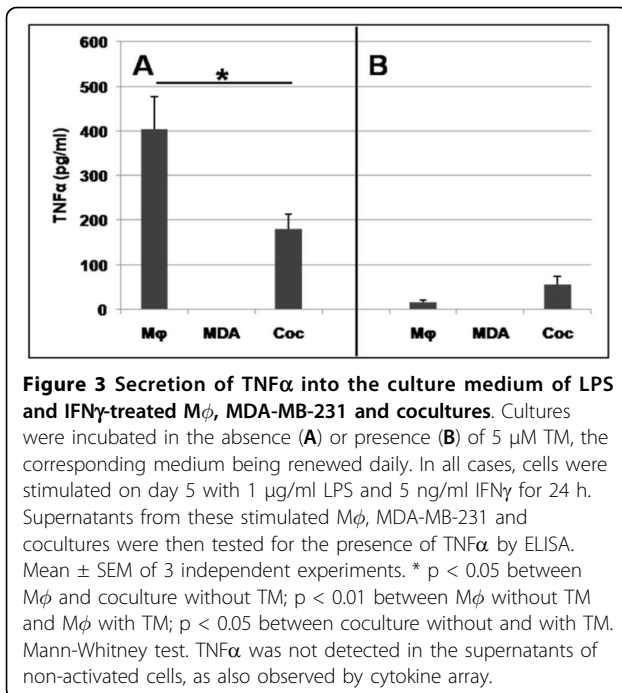


Figure 2 Immunolabelling of Mφ by the monocyte/Mφ marker CD14 and the M1 Mφ marker CD80. Mφ were seeded at a density of 5.7×10^4 cells/cm², with (coculture) or without the same number of MDA-MB-231 cells. In each case, the culture medium was replaced daily. 5 days later, all cultures were treated with 1 μg/ml LPS and 5 ng/ml IFNγ for 24 h before washing and labelling. CD14 fluorescent labelling is green, CD80 is red. **Panel A:** without TM, it can be seen that CD80 was expressed on activated Mφ cultured alone and was not detectable on Mφ in the cocultures. **Panel B:** in presence of TM, no CD80-positive cells were found in any of the cultures.



Effects of coculture on apoptotic activity, TNF α and IL-10 secretion

Without stimulation, M ϕ did not secrete detectable amounts of TNF α . In contrast, as shown in Figure 3, panel A, M ϕ activated by LPS/IFN γ secreted a large amount of TNF α . However, when these M ϕ were cocultured with MDA-MB-231, a decreased secretion of TNF α was observed (180 pg/ml in the coculture medium versus 400 pg/ml in the M ϕ culture). This reduction of TNF α secretion by activated M ϕ is indicative of a change in M ϕ phenotype from M1 to M2.

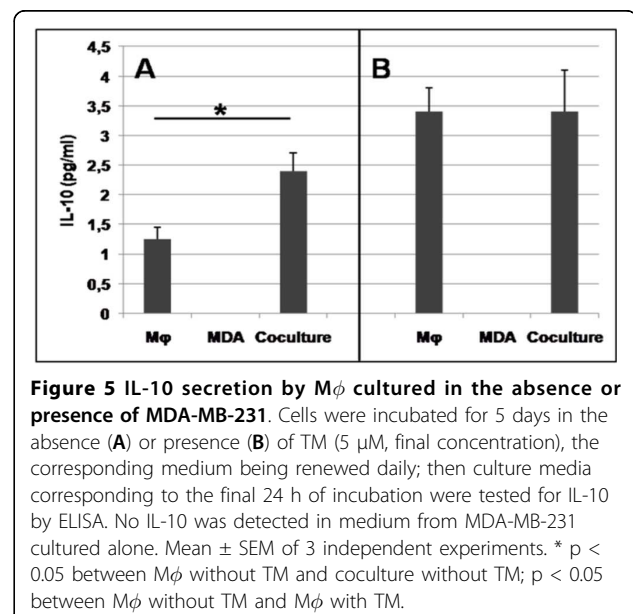
We also found that the coculture of M ϕ with cancer cells did not potentiate the apoptotic activity of the M ϕ . Indeed, as shown in Figure 4, panel A, the apoptosis index measured in the coculture was equivalent to the sum of the index measured in cultures of MDA-MB-231 alone plus that of M ϕ alone.

All these results suggest that M ϕ incubated with MDA-MB 231 lose their M1 phenotype. Furthermore, a switch toward the M2 phenotype is suggested by the cooperation of M ϕ with MDA-MB-231, because the secretion of IL-10 increased approximately twofold in the coculture medium, compared to medium from M ϕ cultured alone (Figure 5).

Molecular mechanism underlying the angiogenic activity induced by the coculture medium

To explore the molecular mechanism responsible for the angiogenic activity that arises from the cooperation between M ϕ and cancer cells, we used an antibody-

cytokine array to analyse the secretion of cytokines and chemokines. Results of this analysis (shown in Figure 6 and Table 1) revealed an increase in the coculture medium, in comparison to the conditioned medium of both M ϕ alone and MDA-MB-231 alone, of the following mediators: CXC chemokines with an ELR motif, chemokines that are known to be angiogenic (such as GRO, GRO α , ENA-78 and IL-8) and chemoattractant chemokines, such as MCP-1 and MCP-3, that can lead to a



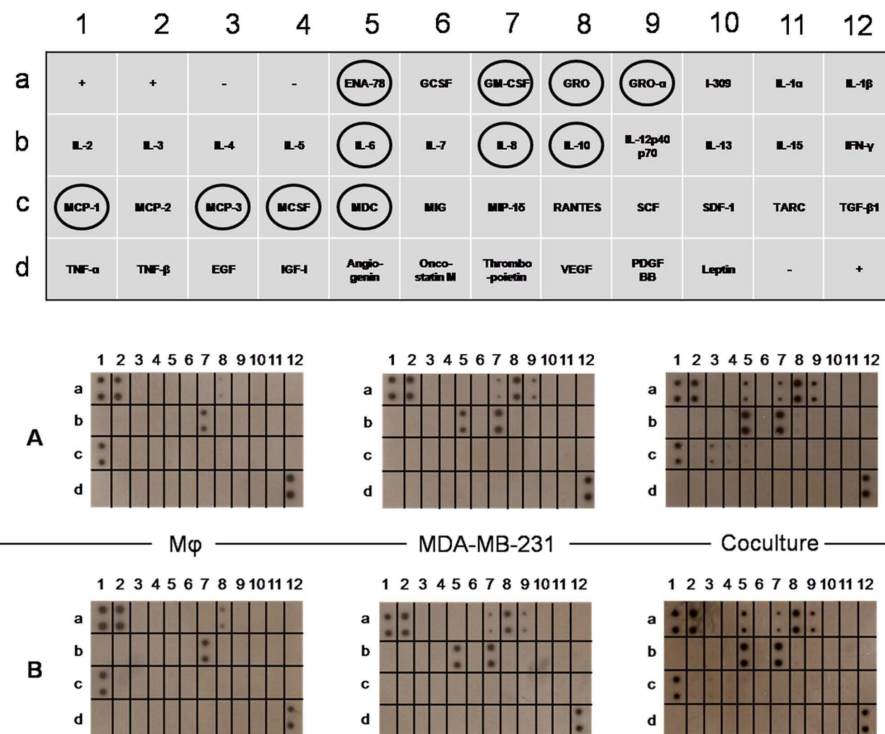


Figure 6 Cytokines secreted by M ϕ , by MDA-MB-231 cells and by the coculture. The assay was performed after 5 days of culture in the absence (A) or presence (B) of 5 μ M TM (final concentration), the corresponding medium being renewed daily. Culture supernatants corresponding to the final 24 h of incubation were then collected and assayed for cytokine production using the Human Cytokine Antibody Array III kit (RayBiotech). Ellipses indicate the coordinates of the secreted cytokines and chemokines. Films were developed from array membranes following incubation with supernatants from either M ϕ cultures, MDA-MB-231 cells or the coculture. Positive controls are located at positions A1, A2, D12. Negative controls are located at positions A3, A4 and D11. This experiment was repeated once with similar results.

positive feed-back. An increased secretion of M-CSF was also found and could be responsible for the switch from M1 to M2. Fold changes of cytokine levels in the coculture medium as compared to culture medium of M ϕ , MDA-MB-231 or the sum of M ϕ + MDA-MB-231 cultured separately are presented in Table 2.

A faint spot indicating a low level of IL-10 production was also observed in the coculture medium, which corroborates the ELISA results suggesting that M ϕ in the coculture acquired the M2 phenotype.

Effect of TM on the angiogenic activity induced by the coculture

As shown in Figure 1, panels A and B, TM inhibited the angiogenesis that was induced in the CAM by the coculture medium: both the total number of sprouting vessels and the cumulative length of those vessels induced by TM-containing coculture medium were similar to those measured with conditioned medium from either monocytes or MDA-MB-231 cells cultured separately in the absence of TM. The observed difference in the effects of coculturing the cells in presence versus absence of TM is highly significant.

We next analysed the mechanism by which TM inhibited the angiogenic activity of the coculture medium. Because the M2 M ϕ phenotype was found to be causally implicated in the angiogenic activity of the coculture medium, we first hypothesized that TM should be able to inhibit the M1-M2 switch observed during the coculture. However, TM did not elicit a change from M2 to M1 phenotype, as shown by the following results: 1) in the coculture medium, whether in the absence or in the presence of TM, CD14+ M ϕ activated by LPS/IFN γ failed to express CD80; and what's more, the expression of CD80 on M ϕ cultured alone was prevented by the addition of TM to the culture medium, as shown in Figure 2A and 2B. 2) TM inhibited by 80% the secretion of TNF α in LPS/IFN γ -stimulated M ϕ cultured either alone or with MDA-MB-231, suggestive of an M2 phenotype (Figure 3). Likewise, TM did not potentiate the apoptotic activity in the coculture, where the apoptosis level was equivalent to the sum of the levels seen in the individual cultures: MDA-MB-231 alone plus M ϕ alone (Figure 4A and 4B). These results indicate that TM does not act by "reversing" the M ϕ phenotype (M2 to M1),

Table 1 Modifications of chemokines induced by coculturing M ϕ with MDA-MB-231 cells

Chemokine	Expressed in		Overexpressed in coculture	Family	Function
	M ϕ	MDA			
ENA 78 (CXCL5)	-	-	+	CXC chemokine with ELR motif	- Pro-angiogenic activity - Neutrophil chemotaxis - Monocyte migration
GM-CSF (CSF2)	-	+	+	Growth factor	- Stimulates stem cells to produce granulocytes and monocytes - Enhances monocytic migration via RhoA and integrin activation, and via MMP expression
GRO (CXCL1, 2, 3)	+	+	+	CXC chemokine with ELR motif	- Angiogenic activity - Increased migration of PBMC/monocytes
GRO α (CXCL1)	-	+	+	CXC chemokine with ELR motif	- Angiogenic activity - Increased migration of PBMC/monocytes
IL-6	-	+	+	Inflammatory cytokine	- Inflammatory cytokine with a well-documented role in cancer - Recruitment of myelo-monocytes
IL-8 (CXCL8)	+	+	+	CXC chemokine with ELR motif	- Migration of neutrophils - Important role in tumour growth, angiogenesis, and metastasis
IL-10	-	-	+	- Anti-inflammatory cytokine	- Anti-inflammatory cytokine produced by M2 M ϕ
MCP-1 (CCL2)	+	-	+	CC chemokine	- Recruitment of monocytes to sites of injury
MCP-3 (CCL7)	-	-	+	CC chemokine	- Inflammatory cytokine
MCSF (CSF1)	-	-	+	Growth factor	- Facilitates monocyte survival, monocyte-to- M ϕ conversion, M ϕ proliferation, M1 to M2 switch
MDC (CCL22)	-	-	+	CC chemokine	-Chemotactic for monocytes

Table 2 Fold increase in cytokine secretion by coculture of monocytes and MDA-MB-231, as compared to the secretion by the two types of cells cultured separately

Cytokines	Fold change
Group 1: cytokines secreted by Mϕ and not by MDA-MB-231: Ratio coculture medium/Mϕ medium	
MCP-1	1.45
Group 2: cytokines secreted by MDA-MB-231 and not by Mϕ Ratio: coculture medium/MDA-MB-231 medium	
GM-CSF	2.82
Gro α	2.96
IL-6	2.68
Group 3: cytokines secreted by both Mϕ and MDA-MB-231 Ratio coculture/(Mϕ medium cultured separately + MDA-MB-231 medium cultured separately)	
Gro	1.80
IL-8	2.35
Group 4: cytokines secreted only in the coculture medium	
ENA-78	
IL-10	
MCP-3	

In every case, the difference of spot intensity between duplicate determinations was <10%. The mean of the 4 spots (2 membranes \times 2 spots per membrane) was used for determining the intensity of expression of each cytokine.

consistent with our observation that IL-10 secretion was increased in TM-treated M ϕ (Figure 5).

Finally, we also tested the action of TM on the secretion of cytokines and chemokines that is induced by the cooperation between cancer cells and M ϕ . No changes were observed when TM was added during the coculture (Figure 6, comparison between panel A without TM and panel B in the presence of TM). The ratio of cytokines secreted in the presence of TM in comparison to its absence did not vary, as the fold change was between 0.85 and 1.15.

Discussion

M ϕ constitute the most abundant immune cell population present in the tumour microenvironment [1]. In many cancers, including breast cancers, it is now widely accepted that the presence of M ϕ is associated with a poor prognosis. An increase in angiogenesis has been considered to be one of the major causes of the deleterious effect of M ϕ in tumours. For example, the density of blood microvessels correlates with the extent of M ϕ infiltration in breast cancer [11]; hence we hypothesized that there was a cooperation between M ϕ and cancer cells to induce this angiogenic process. We therefore developed a model which mimics this cooperation by

culturing M ϕ *in vitro* with the aggressive breast cancer cells MDA-MB-231, analysed the consequences of this cooperation, and investigated the molecular mechanism mediating this angiogenic pathway. The M ϕ population we tested was derived from blood monocytes and thus, at least theoretically, might be anticipated to contain some dendritic cells as well. Although we do not formally exclude this possibility, our protocol for M ϕ preparation does not favour differentiation into dendritic cells. Indeed, neither the classical stimuli for dendritic cell differentiation (IL4 plus GM-CSF [32,33]) nor more recently reported contributory agents (IFN α , TNF α , IL-15, thymic stromal lymphopoietin, Toll-like receptor ligands [34]) were present during the 7-day culture period used to prepare M ϕ for testing. Removal of nonadherent cells during M ϕ generation further disfavours dendritic cell differentiation, given that immature dendritic cells have been shown to be nonadherent cells [35]. Moreover, MDA-MB-231 cells secrete IL-6 (Table 1), which is known to switch the differentiation of monocytes from dendritic cells to M ϕ [36].

We found that the coculture medium induced greater angiogenic activity than did the culture medium of either M ϕ or MDA-MB-231 alone in the CAM model; this enhanced angiogenic activity was evidenced by the formation of a secondary capillary network in the CAM with increases in both total number of capillaries and total length of sprouted vessels. The increased angiogenesis was still seen when coculture medium was diluted 1:2 in order to normalize for the number of cells participating in the secretion of angiogenic factors (not shown).

Next, we confirmed that the coculture of M ϕ with MDA-MB-231 cells induced a switch of M1 M ϕ to an M2 phenotype as shown 1) by the great reduction of CD80 expression under stimulating conditions using LPS and IFN γ on CD14 positive cells (M ϕ) - the fact that LPS markedly potentiated the expression of CD80 by M ϕ has also been observed by Foss *et al.* [37], 2) by the reduction of TNF α secretion by LPS + IFN γ activated M ϕ , suggestive of a reduction in the number of M1 M ϕ during the coculture, and 3) by the increased secretion of IL-10 into the coculture medium, pointing to a switch toward an M2 phenotype. Interestingly, this switch occurred despite the fact that, as shown by the antibody cytokine array, MDA-MB-231 cultured alone produce IL-6, which is an inflammatory cytokine (Figure 4). The M2 phenotype in our model was also characterized by its functional properties: a weak killing activity, and an increase in angiogenesis in the CAM model.

Our results are in good agreement with a number of studies showing that TAMs, which exhibit a predominantly M2-like phenotype [7], can elicit increased angiogenic activity. However, the molecular mechanism

responsible for this angiogenic activity was not totally elucidated. To address the molecular mechanism of the angiogenesis pathway, we investigated the production of pro-inflammatory chemokines and cytokines in cocultures of MDA-MB-231 cells and M ϕ , in comparison to the secretion by MDA-MB-231 or M ϕ cultured separately. Our data (Figure 6 and Table 1) show that the coculture medium contains a number of potent angiogenic factors, as detected by a cytokine-antibodies array. Among the cytokines that are secreted in large amounts into the coculture medium in comparison with the culture medium of resting M ϕ or of MDA-MB-231, we observed a great increase in CXC chemokines with the three amino acids (Glu-Leu-Arg/ELR) immediately amino-terminal to the CXC motif (ELR⁺), which are known to be pro-angiogenic [38]. In particular, an important secretion of the GRO chemokines CXCL1/GRO α , CXCL2/GRO β , CXCL3/GRO γ , as well as CXCL5/ENA-78 and CXCL8/IL-8 was noted. All these chemokines play a significant role in mediating angiogenic activity during tumourigenesis in a variety of cancers [39-44] and have been shown to be of great importance in tumour progression [45,46].

Interestingly, in addition to their angiogenic activity, it has been reported that these chemokines also play a role in monocyte recruitment in inflammation, since the blood monocytes express chemokine receptors, including CXCR2. Besides other functions, the interactions of these receptors with their chemokines induce monocyte arrest and transmigration through the endothelium, which is one of the earliest steps in monocyte recruitment, thereby efficiently regulating inflammation [47]. Therefore our data are suggestive of an autocrine loop, because these chemokines are secreted by M ϕ in cooperation with cancer cells, and they also participate in monocyte recruitment.

In addition, ENA-78 was reported to be an attractant for neutrophils [48], which can also be involved in tumour growth and metastasis [49].

An increase in the proinflammatory cytokine IL-6 was also observed in the coculture medium, whereas a decrease in the secretion of this cytokine would have been expected due to the M2 phenotype of the M ϕ in the coculture. This can be explained by the observation of a constitutive secretion of IL-6 by the MDA-MB-231 cells, which could be responsible for an autocrine loop for IL-6 secretion, as has been proposed for colon cancer [50]. In other words, the observed increase in IL-6 secretion in the cocultures may be produced by the cancer cells themselves.

Our antibody array data also indicated an increase in M-CSF concentration in the coculture medium in comparison to the conditioned media from both M ϕ alone and MDA-MB-231 alone. This increased secretion could

elicit neovascularisation in breast cancer [5,12] and could also contribute to the M1 to M2 switch, since M-CSF-treated monocytes express a substantial part of the M2 transcriptome [51].

We next investigated the effect of TM on the angiogenesis induced by the cooperation between M ϕ and the MDA-MB-231 cancer cells. Several studies emphasize that TM reduces the angiogenic activity induced by tumours [52-58], which is why TM has been proposed in the therapy of cancers. However, the effect of TM has not previously been tested when cancer cells are incubated with M ϕ , which represents a more physiological context: cancer associated with inflammation. We firstly demonstrated that the action of TM cannot be explained by a reversion of the angiogenic M ϕ phenotype (M2 to M1), since CD80 was not detected on cells cultured in presence of TM. We also determined that the addition of TM led to a reduction of LPS/IFN γ -induced TNF α secretion (decrease of more than 80%) and an increase of IL-10 secretion in cocultured cells, and did not increase the apoptotic potential of M ϕ . Pan *et al.* [52] have proposed that TM inhibits angiogenesis through suppression of the NF- κ B signalling cascade. Given that TNF α secretion is NF- κ B dependent, our TNF α results (Figure 3) are consistent with this interpretation, and seem to indicate that TM, like the coculture, induces a switch from M1 to M2. They also suggest that defective activation of NF- κ B could lead to an M2 phenotype.

Finally, we show that, in our model, TM, which inhibits the angiogenic activity of the coculture medium, does not modify the secretion of cytokines and chemokines that is induced by the coculture. Therefore, we rather propose that TM blocks the cell signalling induced by the action of angiogenic chemokines on endothelial cells. This would be in good agreement with the studies of Donate *et al.* [26] and Juarez *et al.* [59], who showed that TM attenuates angiogenesis through the inhibition of superoxide dismutase.

Conclusions

In summary, based on the results and rationale presented here, we conclude that the cooperation between M ϕ and the aggressive breast cancer cells MDA-MB-231 transformed M1 M ϕ to an angiogenic, M2 phenotype. This coculture-induced increase in angiogenic activity, attested by an increased secretion of CXC chemokines, was found to be inhibited by TM. However, TM did not modify the cytokine secretion profile, which suggests that the TM-mediated anti-angiogenic activity may be due to defective cell signalling by these angiogenic chemokines at the level of their endothelial cell targets.

List of abbreviations used

bFGF: basic Fibroblast Growth Factor; CAM: chick chorioallantoic membrane; CK: cytokeratin; DNA: Deoxy-Ribonucleic Acid; EGF: Epidermal Growth Factor; ELISA: Enzyme-Linked Immunosorbent Assay; ENA-78: Epithelial Neutrophil-Activating peptide 78; FCS: foetal calf serum; GCSF: Granulocyte Colony-Stimulating Factor; GM-CSF: Granulocyte-Macrophage Colony Stimulating Factor; GRO: Growth Related Oncogene; HIF: Hypoxia-inducible Factor; IGF-I: Insulin-like Growth Factor-I; IL: interleukin; IFN γ : interferon γ ; LPS: lipopolysaccharide; M ϕ : macrophage; MCP-1: Monocyte Chemotactic Protein-1; MCSF: Macrophage Colony Stimulating Factor; MDC: Macrophage-Derived Chemokine; MIG: Monokine induced by IFN γ ; MIP-1 α : Macrophage Inflammatory Protein-1 α ; NF- κ B: nuclear factor kappa-light-chain-enhancer of activated B cells; PBS: phosphate-buffered saline; PDGF BB: Platelet-Derived Growth Factor-BB; RANTES: Regulated on Activation Normal T cell Expressed and Secreted; SCF: human Stem Cell Factor; SDF-1: Stromal-Derived Factor-1; SEM: standard error of the mean; TAM: Tumour-Associated Macrophages; TARC: Thymus and Activation-Regulated Chemokine; TGF- β 1: Transforming Growth Factor- β 1; TM: tetrathiomolybdate; TNF α : Tumour Necrosis Factor α ; VEGF: Vascular Endothelial Growth Factor.

Acknowledgements

We are grateful to the comité de l'Eure de la Ligue contre le Cancer and to the Association Ti'toine, for financing the fellowship of Ulrich Joimel. We thank the Groupement des Entreprises Françaises dans la Lutte contre le Cancer (GEFLUC) Rouen Normandie and the comité de Seine-Maritime de la Ligue contre le Cancer, who generously supported this work by a program grant from the Cancer Research Campaign.

Author details

¹Laboratoire M.E.R.C.I - EA 3829, Faculté de Médecine et de Pharmacie, Université de Rouen, 22 Bd Gambetta, 76183 Rouen cedex, France. ²Service et Laboratoire d'Oncologie Médicale de L'Hôtel Dieu de Paris, Paris, France. ³UMRS 872 INSERM, Université Pierre et Marie Curie-Paris 6 and Université Paris Descartes, Equipe 18, Centre de Recherche des Cordeliers, Paris, France. ⁴Université Paris-Sud and CNRS FRE 3239, IAL, 7 rue Guy Moquet, BP8, 94801 Villejuif Cedex, France. ⁵Université Paris Descartes, Hôpital Hôtel-Dieu, AP-HP Paris, France.

Authors' contributions

UJ was responsible for this study, designing and executing experiments, interpreting the results and contributing to drafting the manuscript. CG participated in the analysis and interpretation of the results, was involved in writing the manuscript and provided assistance to UJ for the experiments. JS participated in study development and critically reviewed the data, contributing to interpretation of the results and writing the manuscript. LLP contributed to analysis and interpretation of the results and was extensively involved in writing the manuscript. JA was involved in drafting the manuscript and revising it for important intellectual content. ML provided assistance to UJ for the experiments. EB participated in the design of this study, in analysis and interpretation of the results, and in development of the study methods. LC, JPV and RV provided general intellectual support and participated in data discussions. HL and CS were responsible for this study, participating in its design and development, analyzing and interpreting the results, drafting the manuscript and coordinating and overseeing all stages of revision of the manuscript. All authors read and approved the manuscript.

Competing interests

The authors declare that they have no competing interests.

Received: 7 October 2009 Accepted: 17 July 2010

Published: 17 July 2010

References

1. Mantovani A, Schioppa T, Porta C, Allavena P, Sica A: **Role of tumor-associated macrophages in tumor progression and invasion.** *Cancer Metastasis Rev* 2006, **25**(3):315-322.

2. Gottfried E, Faust S, Fritsche J, Kunz-Schughart LA, Andreesen R, Miyake K, Kreutz M: **Identification of genes expressed in tumor-associated macrophages.** *Immunobiology* 2003, **207**(5):351-359.
3. Bailey C, Negus R, Morris A, Ziprin P, Goldin R, Allavena P, Peck D, Darzi A: **Chemokine expression is associated with the accumulation of tumour associated macrophages (TAMs) and progression in human colorectal cancer.** *Clin Exp Metastasis* 2007, **24**(2):121-130.
4. Lin EY, Nguyen AV, Russell RG, Pollard JW: **Colony-stimulating factor 1 promotes progression of mammary tumors to malignancy.** *J Exp Med* 2001, **193**(6):727-740.
5. Saji H, Koike M, Yamori T, Saji S, Seiki M, Matsushima K, Toi M: **Significant correlation of monocyte chemoattractant protein-1 expression with neovascularization and progression of breast carcinoma.** *Cancer* 2001, **92**(5):1085-1091.
6. Brigati C, Noonan DM, Albini A, Benelli R: **Tumors and inflammatory infiltrates: friends or foes?** *Clin Exp Metastasis* 2002, **19**(3):247-258.
7. Mantovani A, Sozzani S, Locati M, Allavena P, Sica A: **Macrophage polarization: tumor-associated macrophages as a paradigm for polarized M2 mononuclear phagocytes.** *Trends Immunol* 2002, **23**(11):549-555.
8. Luo Y, Zhou H, Krueger J, Kaplan C, Lee SH, Dolman C, Markowitz D, Wu W, Liu C, Reisfeld RA, et al: **Targeting tumor-associated macrophages as a novel strategy against breast cancer.** *J Clin Invest* 2006, **116**(8):2132-2141.
9. Sica A, Schioppa T, Mantovani A, Allavena P: **Tumour-associated macrophages are a distinct M2 polarised population promoting tumour progression: potential targets of anti-cancer therapy.** *Eur J Cancer* 2006, **42**(6):717-727.
10. Welm AL, Sneddon JB, Taylor C, Nuyten DS, van de Vijver MJ, Hasegawa BH, Bishop JM: **The macrophage-stimulating protein pathway promotes metastasis in a mouse model for breast cancer and predicts poor prognosis in humans.** *Proc Natl Acad Sci USA* 2007, **104**(18):7570-7575.
11. Lin EY, Li JF, Gnatovskiy L, Deng Y, Zhu L, Grzesik DA, Qian H, Xue XN, Pollard JW: **Macrophages regulate the angiogenic switch in a mouse model of breast cancer.** *Cancer Res* 2006, **66**(23):11238-11246.
12. Ueno T, Toi M, Saji H, Muta M, Bando H, Kuroi K, Koike M, Inadera H, Matsushima K: **Significance of macrophage chemoattractant protein-1 in macrophage recruitment, angiogenesis, and survival in human breast cancer.** *Clin Cancer Res* 2000, **6**(8):3282-3289.
13. Colpaert CG, Vermeulen PB, Benoy I, Soubry A, van Roy F, van Beest P, Goovaerts G, Dirix LY, van Dam P, Fox SB, et al: **Inflammatory breast cancer shows angiogenesis with high endothelial proliferation rate and strong E-cadherin expression.** *Br J Cancer* 2003, **88**(5):718-725.
14. Tsutsui S, Yasuda K, Suzuki K, Tahara K, Higashi H, Era S: **Macrophage infiltration and its prognostic implications in breast cancer: the relationship with VEGF expression and microvessel density.** *Oncol Rep* 2005, **14**(2):425-431.
15. Leek RD, Lewis CE, Whitehouse R, Greenall M, Clarke J, Harris AL: **Association of macrophage infiltration with angiogenesis and prognosis in invasive breast carcinoma.** *Cancer Res* 1996, **56**(20):4625-4629.
16. Torisu H, Ono M, Kiryu H, Furue M, Ohmoto Y, Nakayama J, Nishioka Y, Sone S, Kuwano M: **Macrophage infiltration correlates with tumor stage and angiogenesis in human malignant melanoma: possible involvement of TNFalpha and IL-1alpha.** *Int J Cancer* 2000, **85**(2):182-188.
17. Blot E, Chen W, Vasse M, Paysant J, Denoyelle C, Pille JY, Vincent L, Vannier JP, Soria J, Soria C: **Cooperation between monocytes and breast cancer cells promotes factors involved in cancer aggressiveness.** *Br J Cancer* 2003, **88**(8):1207-1212.
18. Gordon S: **Alternative activation of macrophages.** *Nat Rev Immunol* 2003, **3**(1):23-35.
19. Martinez FO, Sica A, Mantovani A, Locati M: **Macrophage activation and polarization.** *Front Biosci* 2008, **13**:453-461.
20. Hagemann T, Wilson J, Kulbe H, Li NF, Leinster DA, Charles K, Klemm F, Pukrop T, Binder C, Balkwill FR: **Macrophages induce invasiveness of epithelial cancer cells via NF-kappa B and JNK.** *J Immunol* 2005, **175**(2):1197-1205.
21. Hagemann T, Lawrence T, McNeish I, Charles KA, Kulbe H, Thompson RG, Robinson SC, Balkwill FR: **"Re-educating" tumor-associated macrophages by targeting NF-kappaB.** *J Exp Med* 2008, **205**(6):1261-1268.
22. Greten FR, Eckmann L, Greten TF, Park JM, Li ZW, Egan LJ, Kagnoff MF, Karin M: **IKKbeta links inflammation and tumorigenesis in a mouse model of colitis-associated cancer.** *Cell* 2004, **118**(3):285-296.
23. Saccani A, Schioppa T, Porta C, Biswas SK, Nebuloni M, Vago L, Bottazzi B, Colombo MP, Mantovani A, Sica A: **p50 nuclear factor-kappaB overexpression in tumor-associated macrophages inhibits M1 inflammatory responses and antitumor resistance.** *Cancer Res* 2006, **66**(23):11432-11440.
24. Bohuslav J, Kravchenko W, Parry GC, Erlich JH, Gerondakis S, Mackman N, Ulevitch RJ: **Regulation of an essential innate immune response by the p50 subunit of NF-kappaB.** *J Clin Invest* 1998, **102**(9):1645-1652.
25. Pass HI, Brewer GJ, Dick R, Carbone M, Merajver S: **A phase II trial of tetrathiomolybdate after surgery for malignant mesothelioma: final results.** *Ann Thorac Surg* 2008, **86**(2):383-389; discussion 390.
26. Donate F, Juarez JC, Burnett ME, Manuia MM, Guan X, Shaw DE, Smith EL, Timucin C, Braunstein MJ, Batuman OA, et al: **Identification of biomarkers for the antiangiogenic and antitumor activity of the superoxide dismutase 1 (SOD1) inhibitor tetrathiomolybdate (ATN-224).** *Br J Cancer* 2008, **98**(4):776-783.
27. Brewer GJ: **Copper lowering therapy with tetrathiomolybdate as an antiangiogenic strategy in cancer.** *Curr Cancer Drug Targets* 2005, **5**(3):195-202.
28. Von Knethen AA, Brune B: **Delayed activation of PPARgamma by LPS and IFN-gamma attenuates the oxidative burst in macrophages.** *FASEB J* 2001, **15**(2):535-544.
29. Helinski EH, Bielat KL, Ovak GM, Pauly JL: **Long-term cultivation of functional human macrophages in Teflon dishes with serum-free media.** *J Leukoc Biol* 1988, **44**(2):111-121.
30. Ribatti D, Gualandris A, Bastaki M, Vacca A, Iurlaro M, Roncali L, Presta M: **New model for the study of angiogenesis and antiangiogenesis in the chick embryo chorioallantoic membrane: the gelatin sponge/chorioallantoic membrane assay.** *J Vasc Res* 1997, **34**(6):455-463.
31. Badylak SF, Valentin JE, Ravindra AK, McCabe GP, Stewart-Akers AM: **Macrophage phenotype as a determinant of biologic scaffold remodeling.** *Tissue Eng Part A* 2008, **14**(11):1835-1842.
32. Romani N, Gruner S, Brang D, Kampgen E, Lenz A, Trockenbacher B, Konwalinka G, Fritsch PO, Steinman RM, Schuler G: **Proliferating dendritic cell progenitors in human blood.** *J Exp Med* 1994, **180**(1):83-93.
33. Sallusto F, Lanzavecchia A: **Efficient presentation of soluble antigen by cultured human dendritic cells is maintained by granulocyte/macrophage colony-stimulating factor plus interleukin 4 and downregulated by tumor necrosis factor alpha.** *J Exp Med* 1994, **179**(4):1109-1118.
34. Jacobs B, Wuttke M, Papewalis C, Seissler J, Schott M: **Dendritic cell subtypes and in vitro generation of dendritic cells.** *Horm Metab Res* 2008, **40**(2):99-107.
35. Romani N, Reider D, Heuer M, Ebner S, Kampgen E, Eibl B, Niederwieser D, Schuler G: **Generation of mature dendritic cells from human blood. An improved method with special regard to clinical applicability.** *J Immunol Methods* 1996, **196**(2):137-151.
36. Chomarat P, Banchereau J, Davoust J, Palucka AK: **IL-6 switches the differentiation of monocytes from dendritic cells to macrophages.** *Nat Immunol* 2000, **1**(6):510-514.
37. Foss DL, Zilliox MJ, Murtaugh MP: **Differential regulation of macrophage interleukin-1 (IL-1), IL-12, and CD80-CD86 by two bacterial toxins.** *Infect Immun* 1999, **67**(10):5275-5281.
38. Strieter RM, Polverini PJ, Kunkel SL, Arenberg DA, Burdick MD, Kasper J, Dzuiba J, Van Damme J, Walz A, Marriott D, et al: **The functional role of the ELR motif in CXC chemokine-mediated angiogenesis.** *J Biol Chem* 1995, **270**(45):27348-27357.
39. Arenberg DA, Kunkel SL, Polverini PJ, Glass M, Burdick MD, Strieter RM: **Inhibition of interleukin-8 reduces tumorigenesis of human non-small cell lung cancer in SCID mice.** *J Clin Invest* 1996, **97**(12):2792-2802.
40. Arenberg DA, Polverini PJ, Kunkel SL, Shanafelt A, Hesselgesser J, Horuk R, Strieter RM: **The role of CXC chemokines in the regulation of angiogenesis in non-small cell lung cancer.** *J Leukoc Biol* 1997, **62**(5):554-562.
41. Arenberg DA, Keane MP, DiGiovine B, Kunkel SL, Morris SB, Xue YY, Burdick MD, Glass MC, Iannettoni MD, Strieter RM: **Epithelial-neutrophil activating peptide (ENA-78) is an important angiogenic factor in non-small cell lung cancer.** *J Clin Invest* 1998, **102**(3):465-472.
42. Arenberg DA, Keane MP, DiGiovine B, Kunkel SL, Strom SR, Burdick MD, Iannettoni MD, Strieter RM: **Macrophage infiltration in human non-small-**

- cell lung cancer: the role of CC chemokines. *Cancer Immunol Immunother* 2000, **49**(2):63-70.
43. Haghnegahdar H, Du J, Wang D, Strieter RM, Burdick MD, Nanney LB, Cardwell N, Luan J, Shattuck-Brandt R, Richmond A: **The tumorigenic and angiogenic effects of MGSA/GRO proteins in melanoma.** *J Leukoc Biol* 2000, **67**(1):53-62.
 44. Keane MP, Belperio JA, Xue YY, Burdick MD, Strieter RM: **Depletion of CXCR2 inhibits tumor growth and angiogenesis in a murine model of lung cancer.** *J Immunol* 2004, **172**(5):2853-2860.
 45. Strieter RM, Polverini PJ, Arenberg DA, Walz A, Opdenakker G, Van Damme J, Kunkel SL: **Role of C-X-C chemokines as regulators of angiogenesis in lung cancer.** *J Leukoc Biol* 1995, **57**(5):752-762.
 46. Strieter RM, Burdick MD, Mestas J, Gomperts B, Keane MP, Belperio JA: **Cancer CXC chemokine networks and tumour angiogenesis.** *Eur J Cancer* 2006, **42**(6):768-778.
 47. Smith DF, Galkina E, Ley K, Huo Y: **GRO family chemokines are specialized for monocyte arrest from flow.** *Am J Physiol Heart Circ Physiol* 2005, **289**(5):H1976-1984.
 48. Lukacs NW, Hogaboam CM, Kunkel SL, Chensue SW, Burdick MD, Evanoff HL, Strieter RM: **Mast cells produce ENA-78, which can function as a potent neutrophil chemoattractant during allergic airway inflammation.** *J Leukoc Biol* 1998, **63**(6):746-751.
 49. Remedi MM, Donadio AC, Chiabrando GA: **Polymorphonuclear cells stimulate the migration and metastatic potential of rat sarcoma cells.** *Int J Exp Pathol* 2009, **90**(1):44-51.
 50. Li YY, Hsieh LL, Tang RP, Liao SK, Yeh KY: **Interleukin-6 (IL-6) released by macrophages induces IL-6 secretion in the human colon cancer HT-29 cell line.** *Hum Immunol* 2009, **70**(3):151-158.
 51. Martinez FO, Gordon S, Locati M, Mantovani A: **Transcriptional profiling of the human monocyte-to-macrophage differentiation and polarization: new molecules and patterns of gene expression.** *J Immunol* 2006, **177**(10):7303-7311.
 52. Pan Q, Bao LW, Merajver SD: **Tetrathiomolybdate inhibits angiogenesis and metastasis through suppression of the NFkappaB signaling cascade.** *Mol Cancer Res* 2003, **1**(10):701-706.
 53. Sproull M, Brechbiel M, Camphausen K: **Antiangiogenic therapy through copper chelation.** *Expert Opin Ther Targets* 2003, **7**(3):405-409.
 54. Brewer GJ, Merajver SD: **Cancer therapy with tetrathiomolybdate: antiangiogenesis by lowering body copper—a review.** *Integr Cancer Ther* 2002, **1**(4):327-337.
 55. Goodman VL, Brewer GJ, Merajver SD: **Copper deficiency as an anti-cancer strategy.** *Endocr Relat Cancer* 2004, **11**(2):255-263.
 56. Lowndes SA, Harris AL: **The role of copper in tumour angiogenesis.** *J Mammary Gland Biol Neoplasia* 2005, **10**(4):299-310.
 57. Hassouneh B, Islam M, Nagel T, Pan Q, Merajver SD, Teknos TN: **Tetrathiomolybdate promotes tumor necrosis and prevents distant metastases by suppressing angiogenesis in head and neck cancer.** *Mol Cancer Ther* 2007, **6**(3):1039-1045.
 58. Carpenter A, Rassam A, Jennings MH, Robinson-Jackson S, Alexander JS, Erkurun-Yilmaz C: **Effects of ammonium tetrathiomolybdate, an oncolytic/angiolytic drug on the viability and proliferation of endothelial and tumor cells.** *Inflamm Res* 2007, **56**(12):515-519.
 59. Juarez JC, Betancourt O, Pirie-Shepherd SR, Guan X, Price ML, Shaw DE, Mazar AP, Donate F: **Copper binding by tetrathiomolybdate attenuates angiogenesis and tumor cell proliferation through the inhibition of superoxide dismutase 1.** *Clin Cancer Res* 2006, **12**(16):4974-4982.

Pre-publication history

The pre-publication history for this paper can be accessed here:
<http://www.biomedcentral.com/1471-2407/10/375/prepub>

doi:10.1186/1471-2407-10-375

Cite this article as: Joimel et al.: Stimulation of angiogenesis resulting from cooperation between macrophages and MDA-MB-231 breast cancer cells: proposed molecular mechanism and effect of tetrathiomolybdate. *BMC Cancer* 2010 **10**:375.

Submit your next manuscript to BioMed Central and take full advantage of:

- Convenient online submission
- Thorough peer review
- No space constraints or color figure charges
- Immediate publication on acceptance
- Inclusion in PubMed, CAS, Scopus and Google Scholar
- Research which is freely available for redistribution

Submit your manuscript at
www.biomedcentral.com/submit

