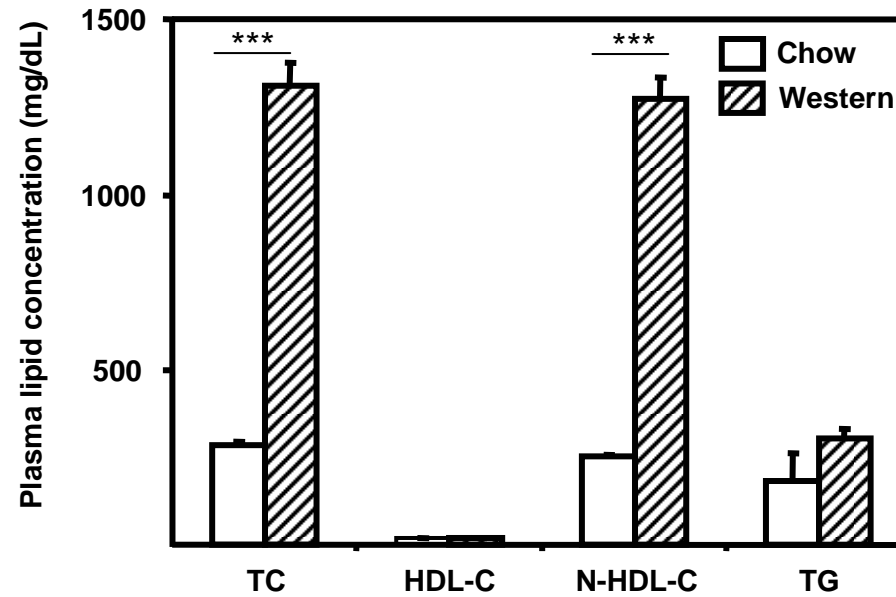


# Supplementary Figure 1

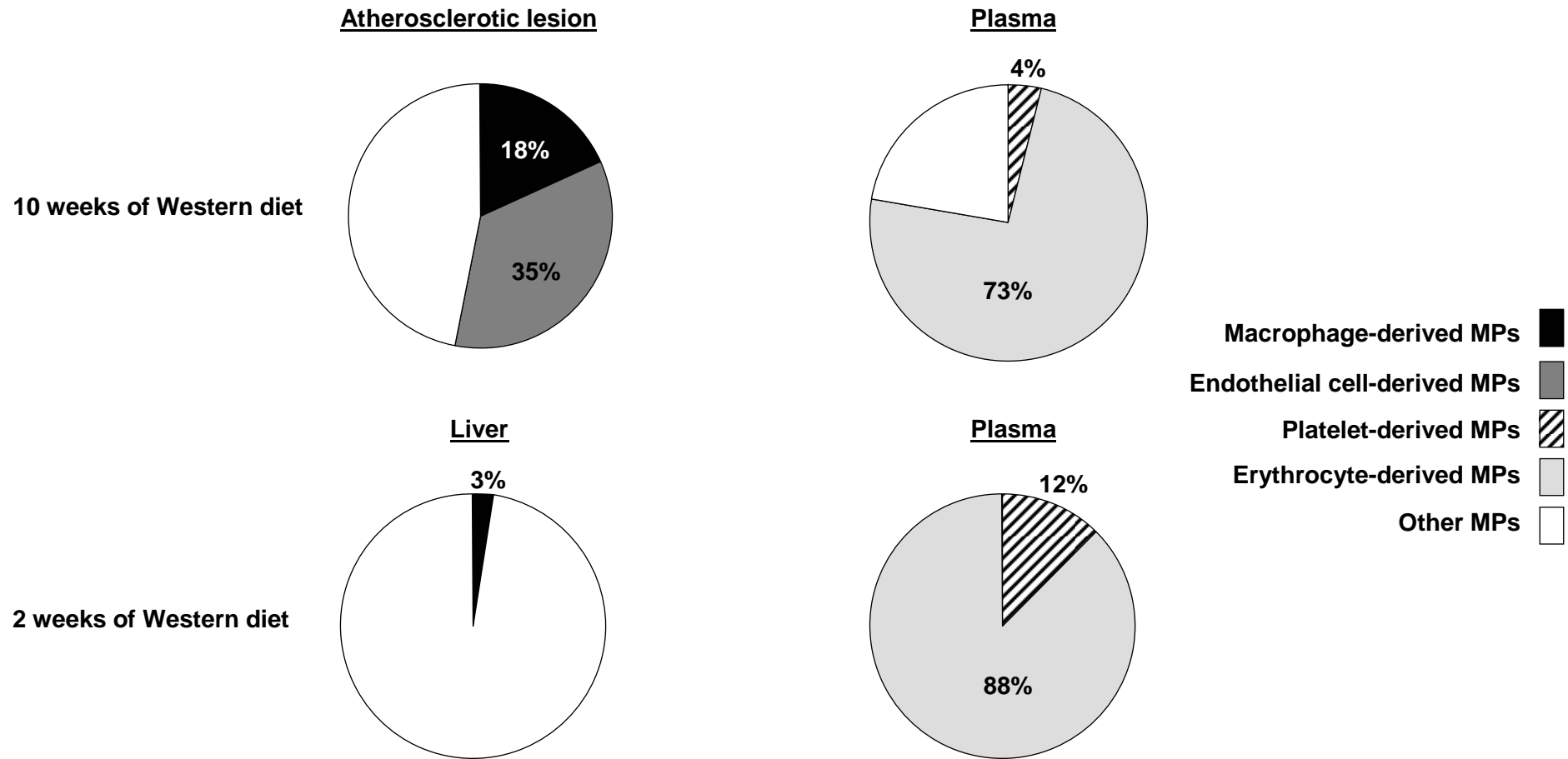


**Supplementary figure 1 : Western diet exacerbates dyslipidaemia in apoE2-KI mice.**

Statistically significant differences are indicated (Mann&Whitney test, \*\*\*  $p < 0.001$ ).

TC : total cholesterol, HDL-C : HDL-cholesterol, N-HDL-C : non-HDL-cholesterol, TG : triglycerides

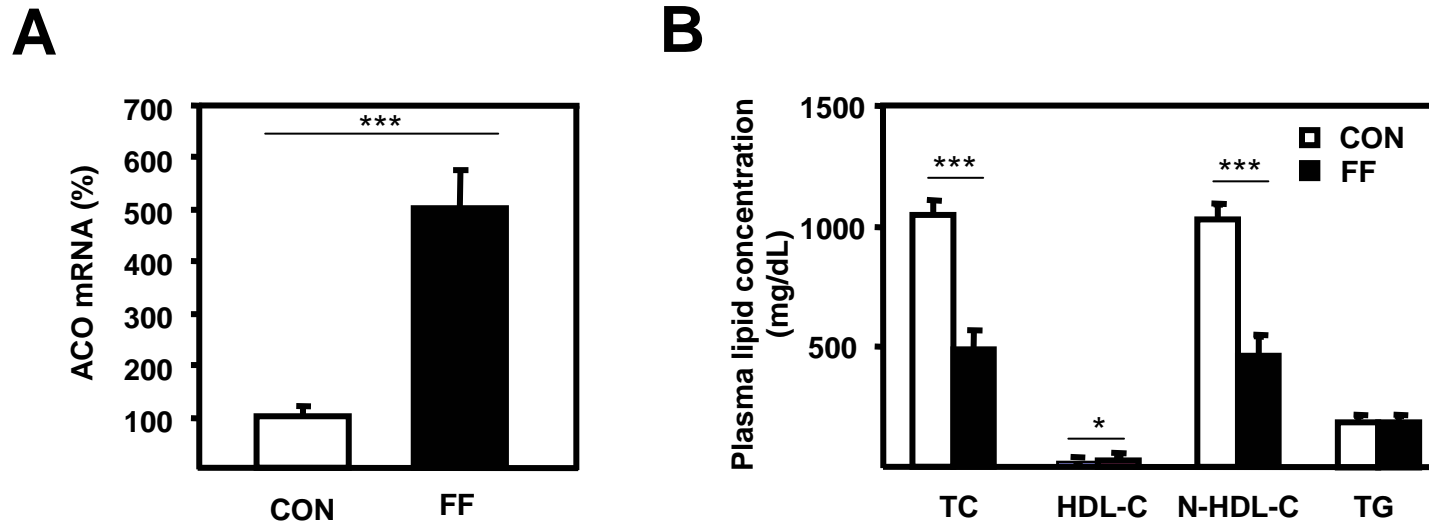
# Supplementary Figure 2



Supplementary figure 2 : MP cell origin distribution on apoE2-KI mice fed a Western diet

Distribution of MPs was measured in atherosclerotic lesions, liver and plasma using specific markers of cell origin, i.e. F4/80 (macrophages), CD144 (endothelial cells), CD41 (platelets) and TER119 (erythrocytes).

# Supplementary Figure 3



**Supplementary figure 3 : Long-term fenofibrate treatment increases hepatic ACO gene expression and improves diet induced-dyslipidaemia in apoE2-KI mice.**

A : ACO mRNA level in the liver.

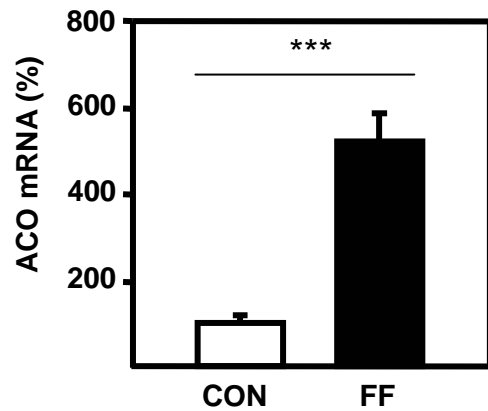
B : Plasma lipid concentrations.

Statistically significant differences are indicated (Mann&Whitney test, \*  $p < 0.05$ , \*\*\*  $p < 0.001$ ).

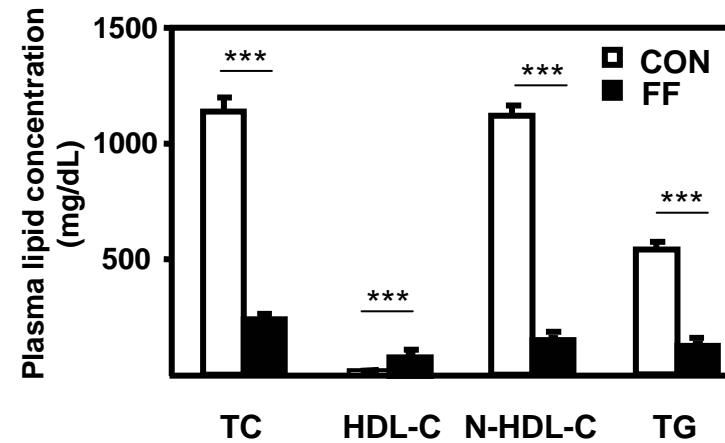
ACO, Acyl CoA oxidase; TC, total cholesterol; HDL-C, high-density lipoprotein cholesterol; N-HDL-C, non-HDL-C; TG, triglycerides.

# Supplementary Figure 4

**A**



**B**



**Supplementary figure 4 : Short-term fenofibrate treatment after long-time Western diet increases hepatic ACO gene expression and improves diet induced-dyslipidaemia in apoE2-KI mice.**

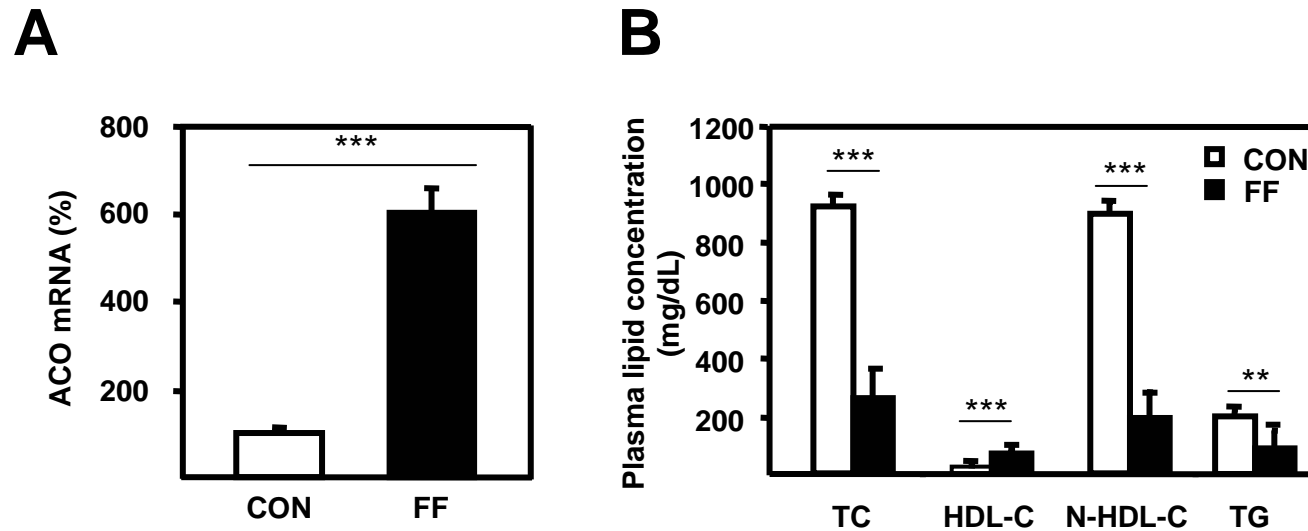
A : ACO mRNA level in the liver.

B : Plasma lipid concentrations.

Statistically significant differences are indicated (Mann&Whitney test, \*\*\*  $p < 0.001$ ).

ACO, Acyl CoA oxidase; TC, total cholesterol; HDL-C, high-density lipoprotein cholesterol; N-HDL-C, non-HDL-C; TG, triglycerides.

# Supplementary Figure 5



**Supplementary figure 5 : Short-term fenofibrate treatment increases hepatic ACO gene expression and improves diet induced-dyslipidaemia in apoE2-KI mice.**

A : ACO mRNA level in the liver.

B : Plasma lipid concentrations.

Statistically significant differences are indicated (Mann&Whitney test, \*\*  $p < 0.01$ , \*\*\*  $p < 0.001$ ).

ACO, Acyl CoA oxidase; TC, total cholesterol; HDL-C, high-density lipoprotein cholesterol; N-HDL-C, non-HDL-C;

TG, triglycerides.