

Intensive Care Medicine

Early rise in circulating Endothelial Protein C Receptor correlates with poor outcome in severe sepsis

Christophe Guillon ^{1,2}, Nathalie Gérard ¹, Véronique Sébille ^{3,4}, Cédric Bretonnière ², Olivier Zambon ², Daniel Villers ² and Béatrice Charreau ¹

¹ INSERM, U643, Nantes, F44000 France; CHU Nantes, Institut de Transplantation et de Recherche en Transplantation, ITERT, Nantes, F44000 France; UMR643 Université de Nantes, Faculté de Médecine, Nantes, F44000 France.

² Service de Réanimation Médicale Polyvalente, CHU de Nantes, F44000 France.

³ EA 4275, Faculté de Pharmacie, Université de Nantes, Nantes, F44000 France.

⁴ Plateforme de Biométrie, CHU de Nantes, F44000 France.

Corresponding author:

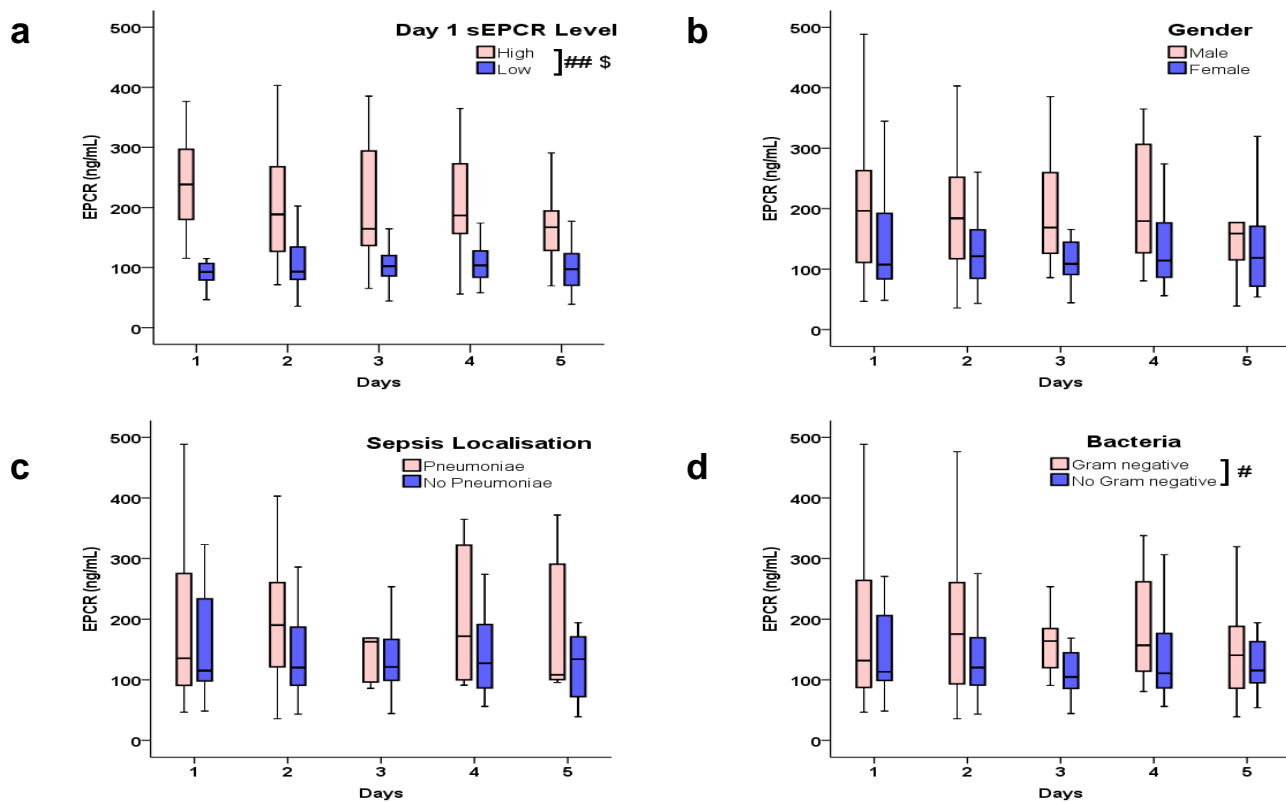
Dr. Christophe GUITTON, M.D.;

Service de Réanimation Médicale Polyvalente ; Hôtel Dieu, CHU de Nantes ; 30 Boulevard Jean Monnet ;
44093 NANTES Cedex 1 ; FRANCE

Phone + 33 2 40 08 73 65 ; Fax + 33 2 40 08 75 50

E-Mail christophe.guillon@chu-nantes.fr

ESM 2 : Supplemental Figure



Time-course (from D1 to D5) analysis of sEPCR in septic patients. sEPCR was measured daily in patients (n=40) with severe sepsis from admission in ICU (D1) to D5. For statistical analysis, repeated measures ANOVA using linear mixed models allowing for random effects with restricted maximum-likelihood estimation were used to assess changes in sEPCR levels over time [“time effect” (TE)], as well as the effect of covariates of interest [“group effect” (GE)]. P-values<0.05 were considered to be statistically significant. sEPCR levels are represented with box plot. Data presented are result from univariate analysis. For GE, statistical difference is indicated as # p<0.05 or ## p<0.01. For TE, statistical difference is indicated as \$ p<0.05. The box plots are interpreted as follows: boxes contain the middle 50% of data, line in the box indicate the median, upper and lower hinges indicate respectively the 75th and 25th percentile and “whiskers” indicate minimum and maximum data values.

Time-course analysis of sEPCR in septic patients (a) According to sEPCR level at D1. High level group (n=20) over median (115ng/mL) and Low level group (n=20) [GE p<0.001; TE p=0.04] **(b) According to gender,** Male (n=16), Female (n=24) [GE p=0.341; TE p=0.845] **(c) According to sepsis site,** pneumoniae (n=11) or not (n=29) [GE P=0.278; TE p=0.597] **(d) According to Gram staining bacteria,** Gram-negative (n=18) or not (n=22) [GE p=0.034; TE p=0.376].