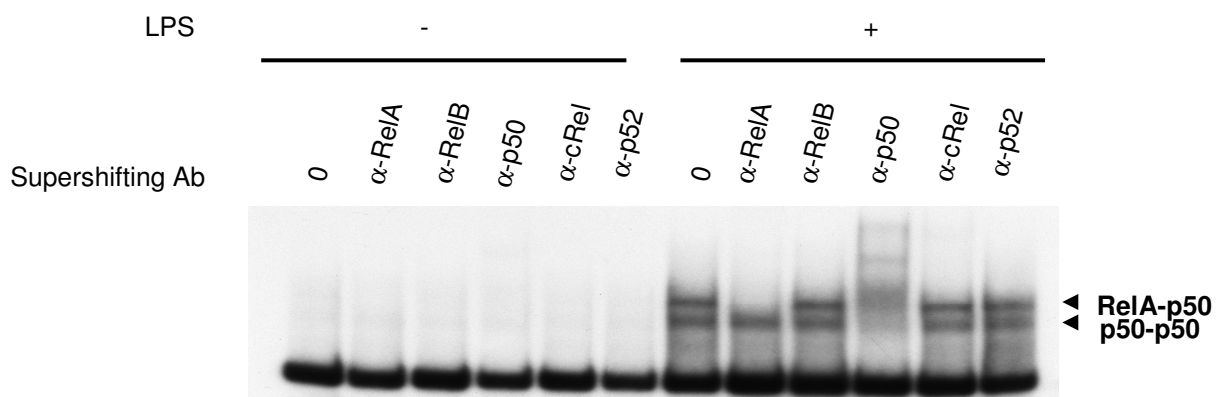


	Mean (pmoles H <sub>2</sub> O <sub>2</sub> /h/10 <sup>5</sup> cells)	<i>sd</i>
<b>DC no stimulation</b>	28,6	0,5
<b>DC + IL4</b>	53,3	4,8
<b>DC + IFN<math>\gamma</math></b>	138,6	5,3

**Table S1 – IL4I1 activity of ex vivo stimulated blood myeloid DC.** Blood myeloid DC were isolated from PBMC using the Miltenyi kit for the negative isolation of BDCA-1 and BDCA-3 positive myeloid DC. Purity of the population was 74.3% CD11c positive cells after magnetic sorting. DC were cultured in the presence of 50 mg/ml GM-CSF and stimulated with 50 ng/ml IFN $\gamma$  or 50 ng/ml IL4 or left unstimulated. IL4I1 activity was measured 48h later.



**Figure S2 – Subunit composition of NF $\kappa$ B DNA-binding complexes induced by LPS treatment of THP1 cells**

For supershift assays, nuclear extracts from THP1 cells either untreated or stimulated with LPS for 2 hours were incubated with the indicated antibodies before incubation with the labeled probe. Results indicate that LPS treatment of THP1 cells induces the DNA binding of two major complexes composed of RelA-p50 and p50-p50 dimers.