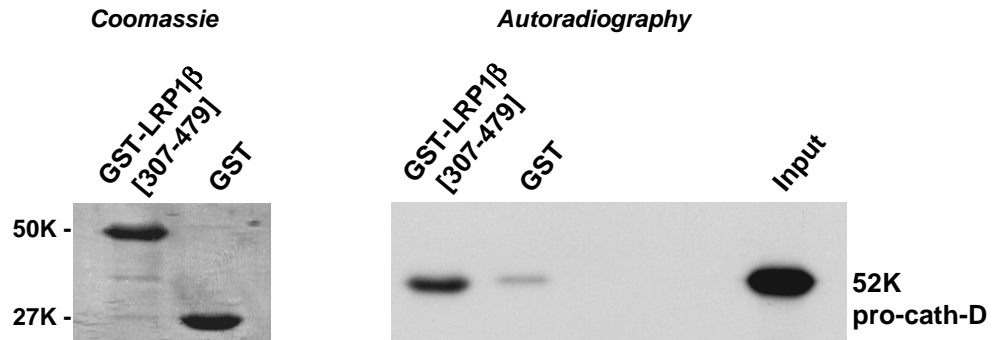


A

1	QIDRGVTHLN	ISGLKMPRGI	AIDWVAGNVY	WTDSGRDVIE	VAQMKGENRK
51	TLISGMIDEP	HAIIVDPLRG	TMYWSDWGNH	PKIETAAMDG	TLRETLVQDN
101	IQWPTGLAVD	YHNERLYWAD	AKLSVIGSIR	LNGTDPIVAA	DSKRGLSHPF
151	SIDVFEDIYI	GVTYINNRVF	KIHKFGHSPL	VNLTGGLSHA	SDVVLYHQHK
201	QPEVTNPCDR	KKCEWLCLLS	PSGPFVCTCPN	GKRLDNGTCV	PVPSPTPPPD
251	APRPGTCNLQ	CFNGGSCFLN	ARRQPKCRCQ	PRYTGDKCEL	DQCWEHCRNG
301	GTCAASPSGM	PTCRCPTGFT	GPKCTQQVCA	GYCANNSTCT	VNQQNQPPQCR
351	CLPGFLG DRC	QYRQCSDGYCE	NFGTCQMAAD	GSRQCRCTAY	FEGRSRCEVNK
401	CSRCEGACV	VNKQSGDVTC	NCTDGRVAPS	CLTCVGHCSN	GGSTMNSKM
451	MPECQCPPHM	TGPRCEEHVF	SQQQPGHIAS	ILIPLLLLLL	LVLVAGVVFV
501	YKRRVQGAKG	FQHQRMTNGA	MNVEIGNPTY	KMYEGGE PDD	VGGLLDADFA
551	LDPDKPTNFT	NPVYATLYMG	GHGSRHSLAS	TDEKRELLGR	GPEDEIGDPL
601	A				

B



C

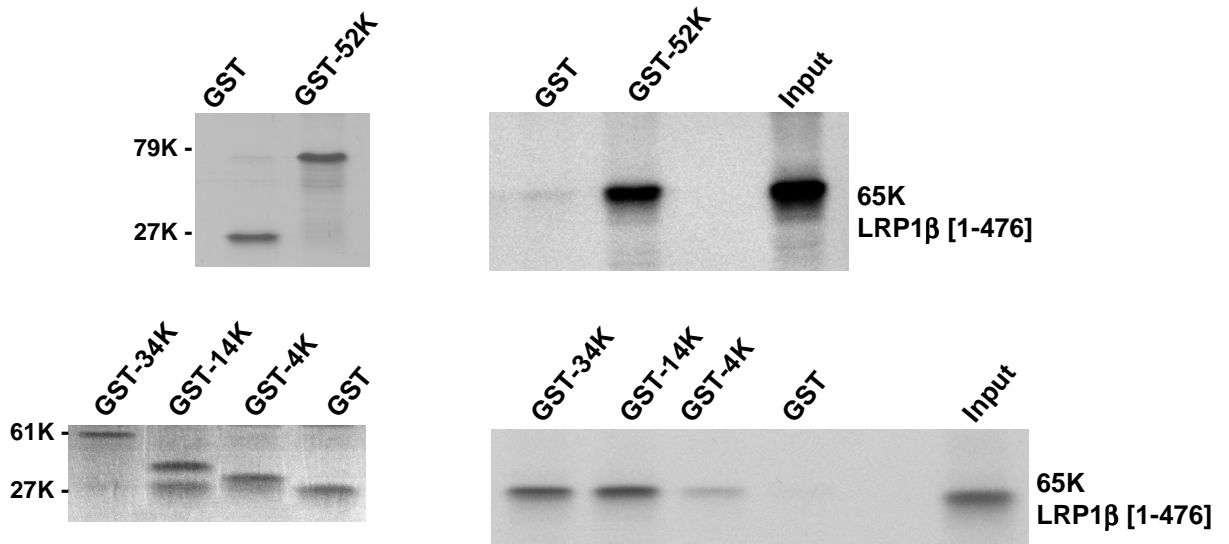


Figure 2