

Recurrent 70.8 Mb 4q22.2q32.3 duplication due to ovarian germinal mosaicism

Lucie Tosca^{1,2,*}, Sophie Brisset¹, François M. Petit³, Laure Lecerc⁴, Ghislaine Rousseau¹, Cécile Bas², Mireille Laroudie⁵, Marie-Laure Maurin¹, Sylvie Tapia⁶, Olivier Picone⁷, Sophie Prevot⁵, Michel Goossens⁸, Philippe Labrunne⁹, Gérard Tachdjian¹²

¹ Service d'histologie, embryologie et cytogénétique Assistance publique - Hôpitaux de Paris (AP-HP), Hôpital Antoine Bécclère, 92140 Clamart,FR

² Modèles de Cellules Souches Malignes et Thérapeutiques INSERM : U935, Université Paris Sud - Paris XI, FR

³ Service de biochimie, hormonologie et génétique Assistance publique - Hôpitaux de Paris (AP-HP), Hôpital Antoine Bécclère, Clamart,FR

⁴ Plate-forme de génomique Hôpital Henri Mondor, Assistance publique - Hôpitaux de Paris (AP-HP), INSERM : U955, FR

⁵ Service d'AnatomoPathologie Assistance publique - Hôpitaux de Paris (AP-HP), Hôpital Antoine Bécclère, Université Paris Sud - Paris XI, Clamart 92141,FR

⁶ Cytogénétique Laboratoire Pasteur Cerba, 95066 Cergy-Pontoise,FR

⁷ Service de gynécologie-obstétrique, médecine de la reproduction Assistance publique - Hôpitaux de Paris (AP-HP), Hôpital Antoine Bécclère, Université Paris Sud - Paris XI, 157, rue de la Porte de Trivaux 92141 Clamart,FR

⁸ Institut Mondor de Recherche Biomédicale INSERM : U955, Université Paris XII Val de Marne, IFR10, FR

⁹ Service de pédiatrie Assistance publique - Hôpitaux de Paris (AP-HP), Hôpital Antoine Bécclère, Université Paris Sud - Paris XI, 92140 Clamart,FR

* Correspondence should be adressed to: Lucie Tosca <lucie.tosca@abc.aphp.fr >

Abstract

A mosaicism is defined by the presence of two or more populations of cells with different genotypes in one individual. Chromosomal germinal mosaicism occurs in germ cells prior to the onset of meiosis. Previously, few studies have described germinal mosaicism. In the present study we report on two siblings who carried identical pure and direct interstitial 4q22.2q32.3 duplication. Procedure investigations included complete clinical description, conventional cytogenetic analysis, fluorescence in situ hybridisation (FISH), comparative genomic hybridisation (CGH) array experiments and microsatellite study searching for parental origin of the duplication. Microarray CGH and further FISH experiments with BAC clones showed the same 70.8Mb direct duplication dup(4)(q22.2q32.3). Molecular studies of the 4q duplication were consistent with maternal origin associated with mitotic or meiotic rearrangements. This structural chromosomal aberration was associated in both cases with increased nuchal translucency, growth retardation and dysmorphism. Cardiopathy and lung malformations were only evident in the first case. These clinical manifestations are similar to those previously reported in previous studies involving pure 4q trisomy of the same region, save thumb and renal abnormalities that were not obvious in the presented cases. The amplified region included genes involved in neurologic development (NEUROG2, MAB21L2, PCDH10/18, GRIA2). The recurrent 4q duplication in these siblings is consistent with a maternal ovarian germinal mosaicism. This is the first description of germinal mosaicism for a large chromosomal duplication and highlights that genetic counselling for apparently de novo chromosome aberration should be taken with care.

MESH Keywords Child, Preschool ; Chromosome Aberrations ; Chromosomes, Human, Pair 4 ; genetics ; Cytogenetic Analysis ; Female ; Gene Duplication ; Gene Rearrangement ; genetics ; Genetic Counseling ; Humans ; Karyotyping ; Microsatellite Repeats ; Mosaicism ; Ovum ; Siblings

Author Keywords chromosome 4 ; duplication ; recurrence ; comparative genomic ; hybridisation microarray ; microsatellites ; ovarian mosaicism.

INTRODUCTION

A mosaicism is defined by the presence of two or more cell lines with different genotypes in one individual, who has developed from a single fertilised egg 1 . Different types of mosaicism exist, such as germinal mosaicism (restricted to the germ cells) or tissue mosaicism. The most common form of mosaicism detected through prenatal diagnosis involves trisomies. Chromosomal germinal mosaicism is rare and occurs in early germ cells (oogonia or spermatogonia) prior to the onset of meiosis 1 . These mitotic errors can be nondisjunctions (abnormality of chromosome number) or the production of structural rearrangements (deletion, duplication, inversion, insertion or translocation). Germinal mosaicism becomes evident when two siblings are born with the same de novo chromosomal abnormality. Germinal mosaicism is independent of maternal age 2 . Few studies in the literature described germinal mosaicism corresponding essentially to aneuploidies and structural chromosomal aberrations including mostly isochromosomes and deletions 3 –19 (for review see Röthlisberger and Kotzot, 2007 20).

In the present study we report two siblings carrying the same pure and direct 4q22.2q32.3 duplication characterised using microarray CGH and due to ovarian germinal mosaicism.

MATERIALS AND METHODS

Clinical report

The first pregnancy of a 24-year-old woman was marked by increased nuchal translucency (4.5 mm) on first-trimester ultrasound examination. Parents were non-consanguineous and both familial histories were unremarkable. Chorionic villi were sampled for chromosomal analysis that showed a large long arm on chromosome 4. This chromosomal abnormality was confirmed on amniotic fluid analysis at 16 weeks. After genetic counselling and according to the French law, termination of pregnancy was performed at 20 weeks of gestation. The female foetus was hypotrophic. Weight, height, head circumference and biparietal diameter were 221.6 g (< 5th percentile), 15 cm (5th percentile), 25 cm (25th percentile) and 14 cm (< 25th percentile), respectively. Physical examination showed cranio-facial dysmorphism with elongated skull, large nose, long philtrum, large mouth with self-effacing cupid arc, badly hemmed ears and neck oedema (Supplementary Figure 1). Internal examination revealed pulmonary lobulation defect with two lobes in the right lung and a single one in the left lung. Interauricular communication was also noted. The placenta was hypotrophic (86.8 g versus around 160 g for normal controls at the same term) but with normal aspect.

During the second pregnancy increased nuchal translucency was again detected (5 mm) on first-trimester ultrasound examination. Chorionic villi were sampled and chromosomes analysis showed an abnormal long arm on chromosome 4 similar to this observed in the first foetus. Regular foetus ultrasound examinations showed normal amniotic fluid volume and were unable to detect any malformations in the foetus whose growth was normal. After several discussions, both parents decided to continue the pregnancy. At 38 weeks of gestation, a boy was vaginally delivered. His weight was 3040 g (< 25th percentile). Physical examination showed general hypotonia and facial dysmorphism with narrow and horizontal palpebral fissures, prominent nose and moderate microretrognathia. At six weeks of age, his weight, height and head circumference were 4 400 g (< 25th percentile), 55.5 cm (< 50th percentile) and 37.5 cm (< 25th percentile), respectively. The smile response was acquired, axial tonus was correct and no other abnormality was specified. Facial dysmorphic features were stable. At the age of 6 months, the boy had no specific medical treatment. His weight, height and head circumference were 7 070 g (-1SD), 64 cm (-1SD) and 42 cm (-1SD), respectively. He was able to catch close objects but not distant ones. He was able to burst into laughter. The seating position was not completely acquired and axial hypotonia was still present. At the age of one year, his weight, height and head circumference were 8 900 g (-1SD), 70 cm (-1SD) and 46 cm (-1SD), respectively. Axial hypotonia was still marked, resulting in mild kyphosis when seating and in the absence of any possibility to stand up. Psychomotricity support was begun. At the age of 32 months, height, weight and head circumference were 80 cm (-3.5 SD), 10 500 kg (-2.5 SD) and 49 cm (-1 SD), respectively. The child was not able to walk alone and still needed some help. He was able to walk on all four limbs and to stand up against a wall or a table. His language was very poor, limited to 2 or 3 disyllabic words, whereas hearing explorations proved normal. Facial dysmorphism was unchanged (Supplementary Figure 2). Educational support was continued.

Conventional cytogenetic analysis

Chromosome analyses were performed from uncultured and cultured trophoblast cells, amniotic cells and peripheral lymphocytes using standard procedures (RHG banding, CBG banding and a high resolution banding technique obtained after cell culture synchronisation and BrdU incorporation).

DNA extraction

Genomic DNA was isolated from peripheral blood (parents's propositus), placenta (case 1) and cultured trophoblast cells (case 2) using Qiagen DNeasy Blood and Tissue Kit (Qiagen, Courtaboeuf, France). The extracted DNA concentrations were estimated using the NanoDrop ND-1 000 spectrophotometer (NanoDrop Technologies). Extracted DNAs were used for array comparative genomic hybridisation and microsatellite analysis.

Array Comparative Genomic Hybridisation (aCGH)

The genomic imbalances of placenta and trophoblast cells were analysed by array comparative genomic hybridisation using 105K oligonucleotide arrays (Hu-105A, Agilent Technologies, Massy, France). All array hybridisations were performed according to the manufacturer's recommended protocols. Briefly, 3µg of genomic DNA were digested with AluI (5 units) and RsaI (5 units) for 2 hours at 37°C and fluorescently labelled with the Agilent Genomic DNA labelling kit PLUS (Agilent Technologies, Massy, France). A male or a female human genomic DNA (Promega, Charbonnière, France) were used as reference. Experiments were done in dye-swap. Cy5-dUTP patient DNA and its gender matched reference labelled with Cy3-dUTP were denatured and pre-annealed with Cot-1 DNA and Agilent blocking reagent prior to hybridisation for 40 hours at 20 rpm in a 65°C rotating hybridisation oven (Agilent Technologies). After washing, the slides were scanned on an Agilent Microarray Scanner. Captured images were processed with Feature Extraction 9.1 software and data

analysis was performed with CGH Analytics 3.5 (Agilent Technologies). Copy number variations were considered significant if there were defined by 3 or more oligonucleotides spanning at least 50 Kb and contained at least one gene and were not identified in The Database of Genomic Variants.

Fluorescence In Situ Hybridisation (FISH)

FISH analyses were performed on trophoblast cells and metaphase spreads from both parental and propositus lymphocytes. The whole-chromosome painting (WCP) probe specific for chromosomes 4 was used according to manufacturer's recommendations (Amplitech, Compiègne, France).

BACs clones specific for the 4q chromosomal region (RP11-397E7 located at 4q21.3, RP11-79M20 located at 4q22.1, RP11-451M10 located at 4q22.1, RP11-16I17 located at 4q22.3, RP11-81J9 located at 4q25, RP11-501E13 located at 4q25, RP11-77P11 located at 4q28.1, RP11-481K16 located at 4q31.21, RP11-301H24 located at 4q31.21, RP11-655B23 located at 4q31.23, RP11-177L7 located at 4q32.3, RP11-18D7 located at 4q35) were used. BAC DNAs were labelled by nick-translation using a FITC-dUTP nucleotide or Rhodamine-dUTP nucleotide (Roche Diagnostics, Rungis, France).

Microsatellite analysis

Thirteen polymorphic markers from chromosome 4 (see location and characteristics in Table 1) were co-amplified by multiplex polymerase chain reaction (PCR). Primer sequences were designed according to GeneDB locus description from The Wellcome Trust Sanger Institute. Multiplex PCR was carried out following standard protocols using 50ng of DNA in 50µl reaction volume and fluorescence dye labelled primers [10pmol each primer, 10mM Tris-HCl (pH 9), 50mM KCl, 2.25mM MgCl₂, 0.2mM each dNTP and 2U Taq Polymerase (Taq Core Kit, MP Biomedicals)]. PCR conditions were denaturation at 95°C for 5 min followed by 20 cycles of 95°C for 40sec, 58°C for 40sec, 72°C for 40sec, and final 72°C extension step for 7 min (Veriti Thermal cycler, Applied Biosystems, Courtaboeuf, France). PCR products were then separated onto an ABI Prism 3130 analyser (AppliedBiosystems) with the GeneScan 500LIZ as size standard. Data were analysed using the GeneMapper 4.0 software (AppliedBiosystems, Courtaboeuf, France).

RESULTS

Conventional cytogenetic analysis

In case 1, direct analysis of trophoblast cells showed an abnormal female 46,XX,add(4) karyotype with an additional chromosomal region located on 4q. In case 2, cytogenetic analyses on trophoblast cells revealed the same abnormal chromosome 4 with an additional region at the long arm (46,XY,add(4)) (Figure 1A). In both cases this was interpreted as representing either a duplication of the long arm 4q or another rearrangement like a translocation or an insertion. Analyses of parents' peripheral blood lymphocytes showed normal standard karyotypes.

DNA microarray assay

CGH analysis showed in both cases a gain of 4q22.2q32.3 region (case 1 in Figure 1B and case 2 in Figure 1C). For both cases, the analysis revealed a proximal breakpoint located on 4q22.2 (position 94 128 982) and a distal breakpoint on 4q32.3 (position 164 941 617). These genomic positions were determined using the version 18 of the Human genome built (<http://genome.ucsc.edu/>). Thus, a 70.8Mb interstitial region was amplified. Analyses revealed other variations (gain or loss) on chromosome 4 and on the other chromosomes. These changes corresponded to copy number variations (CNV) previously reported in the database of genomic variants (<http://projects.tcag.ca/variation/>).

FISH analysis

Whole-chromosome 4 painting probe showed complete hybridisation on normal chromosome 4 and on the abnormal chromosome 4 (Supplementary Figure 3A). No hybridisation signal was detected on any other chromosome. This finding excluded the possibility of an insertion or a translocation. FISH experiments couldn't be realised in case 1 because only uncultured placenta was available.

In case 2, BACs RP11-16I17 (4q22.3), RP11-81J9 (4q25), RP11-77P11 (4q28.1), RP11-481K16 (4q31.21) and RP11-655B23 (4q31.23) gave one signal on normal chromosome 4 and two signals on duplicated chromosome 4. No hybridisation signal of these BACs probes was detected on any other chromosome. Moreover BACs RP11-451M10 (4q22.1), RP11-177L7 (4q32.3) and RP11-18D7 (4q35) showed one signal on both normal chromosome 4 and duplicated one. Thus, we confirmed that the proximal breakpoint was located between BACs RP11-451M10 (4q22.1) and RP11-16I17 (4q22.3) and the distal one between BACs RP11-655B23 (4q31.23) and RP11-177L7 (4q32.3). These results were in accordance with the propositus CGH array profile.

In order to precise the nature of the chromosomal rearrangement, double color hybridisation using BACs probe RP11-501E13 (4q25) and RP11-301H24 (4q31.21) was realised. The position of the hybridisation signals on the duplicated chromosome demonstrated that the

rearrangement was a direct duplication (Supplementary Figure 3B). Schematic representation of BAC probes position is summarised in Supplementary Figure 3C .

In order to exclude low mosaicism for the chromosome 4 duplication, FISH analyses using BACs RP11-301H24 (4q31.21) were performed in parent cells. Two signals were observed in 200 interphase nuclei and 100 metaphases for each parent excluding thus duplication 4q mosaicism in lymphocytes.

Microsatellite analysis

Microsatellite markers analysis was informative for parental origin determination but also in specifying the mechanism of the duplication rearrangement (Table 2). Indeed, D4S427, D4S422, D4S1579 and D4S3334 marker profiles were consistent with maternal origin for both cases (Table 2). As a representative result, D4S3334 analysis is showed in Figure 2A . Moreover, D4S1573, D4S191, D4S3024, D4S427, D4S194 and D4S1579 markers analyses indicated that both duplicated maternal alleles were different for case 1 and were identical for case 2 (Table 2). These results pointed out an interchromosomal rearrangement for case 1 and an intrachromosomal one for case 2. As a representative result, D4S194 analysis is showed in Figure 2B . A possible segregation of these informative microsatellite markers illustrating this recombination is represented in Figure 3 .

In summary, these conventional and molecular cytogenetic experiments allowed a precise characterisation of both sibs chromosomal formula. We concluded that both cases carried a pure and direct dup(4)(q22.2q32.3) of maternal origin. As the maternal karyotype was normal, these results suggested an ovarian germinal mosaicism.

DISCUSSION

We report on two sibs (a female foetus and a 3-year-old male infant) carrying the same structural abnormality with normal parental karyotypes. In both cases, prenatal ultrasound had detected increased nuchal translucency. Both presented facial dysmorphic elements such as long philtrum, large mouth with self-effacing cupid arc, low-set and badly hemmed ears, horizontal palpebral fissures, prominent nose, moderate microretrognathia and microcephaly. They also showed prenatal and/or post-natal growth retardation. These phenotypes were associated with a de novo direct dup(4)(q22.2q32.3). In both cases, CGH array indicated a 70.8Mb duplication size and microsatellites analysis showed that the duplication had maternal origin. Microsatellites analysis also specified that the duplication resulted from an interchromosomal rearrangement in the first case and resulted from an intrachromosomal one in the second case. Thus, these results suggest an ovarian 46,XX/46,XX,dup(4)(q22.2q32.3) mosaicism.

Germinal mosaicism is independent of maternal age 2 and becomes evident when two siblings are born with the same de novo chromosomal abnormality. Numerous studies described germinal mosaicism involving molecular defects such as gene deletion, gene mutation or intragenic intron rearrangements (for review see 1). Cases of germinal mosaicism involving structural and numeric chromosomal rearrangements are rare but described (for review see 20). Chromosomal germinal mosaicism is due to mitotic errors before the onset of meiosis. These errors could be nondisjunctions (abnormality of chromosome number) or the production of structural rearrangements (deletion, duplication, inversion, insertion or translocation). Few studies highlighted parental germinal mosaicism with abnormal number of chromosomes such as trisomy 18 and 21 3-7 or monosomy X 3,8 . Until now, only eleven studies described germinal mosaic involving structural chromosomal aberration 9-19 . Indeed, five studies reported structural abnormality with a maternal mosaicism origin 9,10,11,18,19 . Engel et al. reported a familial pseudo dicentric chromosome (5;21) occurring on maternal germline mosaicism as revealed by microsatellite marker analysis 9 . Another study described sibling cases with a subtelomeric 5,8Mb deletion on chromosome 15 as a result of maternal germinal mosaicism 10 using microarray CGH and polymorphic markers analysis. A recurrent case of chromosome 18 inversion [46,XY,+18,der(18:inv(18))(q10;q10)] was also described as a result of a maternal germinal mosaic 11 . Finally two recurrent deletions [del(16)(q11.3q12.2) and del(22)(q13.3qtel)] were reported 18,19 . Concerning male mosaics, another study reported sibling propositus with chromosome 14 structural abnormalities as a consequence of father testicular mosaicism 12 and two more cases of recurrent paternal deletions on chromosomes 11 and 13, respectively, were described 16,17 . Our report is the first one describing a large duplication rearrangement due to germinal mosaicism. Chromosomal regions around breakpoints didn't contain segmental duplications (UCSC Genome Browser database search) that could favour duplication mechanism. In the present study, six informative microsatellite analysis indicated the occurrence of an allelic crossover during maternal gamete production.

Two hypotheses can be established in order to explain case 1 interchromosomal recombination and case 2 intrachromosomal recombination (Figure 4). First, allelic crossover could have occurred in prophase of first meiotic division (Figure 4A). Indeed theoretical meiotic recombination frequency in the duplicated region having a size of 70.8 Mb is about 70 % 21 . Second, allelic crossover could have occurred during oogonia mitotic division (Figure 4B). However, the first hypothesis is more plausible. In both situations four gamete types could be produced in ovaries to explain our observations. These allelic recombinations in the duplicated 4q region between siblings could explain the phenotype differences observed between both sibs by affecting for example gene regulation.

To our knowledge, seventeen studies described pure 4q duplication region covering the 4q22q32 region 22–38 (total reports included 4q21q35.2 chromosomal region analysed by conventional cytogenetic and FISH experiments, see Supplementary Table 1). No prenatal case has ever been reported.

Comparing clinical features of the 22 patients including ours (Supplementary Table 1) showed occurrence of growth or psychomotor/mental retardation (15/22 reported cases), microcephaly (11/22), dysmorphic elements including epicanthus folds (15/22), prominent nasal bridge (16/22), low set ears (14/22). Short philtrum (9/22) and micrognathia (8/22) are relatively common. It has been suggested that thumb and renal abnormalities could be associated with 4q22q23 and/or 4q25q31.3 region 30 ,31 . At contrary with these authors, we didn't observed thumb nor renal abnormalities in our patients having a 4q22q32 duplication. To our knowledge, the present study is the first report of a pure and recurrent 4q duplication investigated with CGH microarray technology and microsatellite analysis. CGH on chromosomes has been used in the study of Elghezal et al. 32 . CGH array analysis allowed a more precise description of distal and proximal breakpoints thanks to a better resolution of 15kb (average probe spacing). Gene analysis using the UCSC Genome Browser database (<http://genome.ucsc.edu/>) of CGH microarray results listed more than 110 duplicated genes. Thus, it was difficult to correlate observed phenotypes with implicated genes. Nevertheless, several duplicated genes expressed in neurogenesis such as neurogenin 2 (NEUROG2 , 4q25) 39 , mab-21-like 2 (MAB21L2 , 4q31) 40 , protocadherin 10/18 (PCDH10 , 4q28.3 and PCDH18 , 4q31) and glutamate receptor ionotropic AMPA2 (GRIA2 , 4q32q33) 41 could be implicated in the phenotype. In particularity, overexpression of these genes could explain general hypotonia and mental delay observed in the second patient.

In conclusion, this report highlighted that genetic counselling for apparently de novo chromosome aberration should be taken with care with regard to germinal mosaicism. The actual risk for de novo structural aberration taking into account the abortion risk of prenatal diagnostic is estimated around 0.5–1 % 20 .

Acknowledgements:

We thank C. Metay, A. Briand and the technical team for CGH array experiments help and results interpretation. We thank L. Cuisset for microsatellite analysis and A.-E. Mas for case 1 photography. We also thank the DHOS (Direction de l'Hospitalisation et de l'Organisation des Soins) for their support in the development array CGH platform Paris Sud.

References:

- 1 . Zlotogora J . Germ line mosaicism . *Hum Genet* . 1998 ; 102 : 381 - 386
- 2 . Delhanty JD . Mechanisms of aneuploidy induction in human oogenesis and early embryogenesis . *Cytogenet Genome Res* . 2005 ; 111 : 237 - 244
- 3 . Uehara S , Yaegashi N , Maeda T . Risk of recurrence of fetal chromosomal aberrations: analysis of trisomy 21, trisomy 18, trisomy 13, and 45,X in 1,076 Japanese mothers . *J Obstet Gynaecol Res* . 1999 ; 25 : 373 - 379
- 4 . Bruyere H , Rupps R , Kuchinka BD , Friedman JM , Robinson WP . Recurrent trisomy 21 in a couple with a child presenting trisomy 21 mosaicism and maternal uniparental disomy for chromosome 21 in the euploid cell line . *Am J Med Genet* . 2000 ; 94 : 35 - 41
- 5 . Sachs ES , Jahoda MG , Los FJ , Pijpers L , Wladimiroff JW . Trisomy 21 mosaicism in gonads with unexpectedly high recurrence risks . *Am J Med Genet Suppl* . 1990 ; 7 : 186 - 188
- 6 . Mehes K , Kosztolanyi G . A possible mosaic form of delayed centromere separation and aneuploidy . *Hum Genet* . 1992 ; 88 : 477 - 478
- 7 . Conn CM , Cozzi J , Harper JC , Winston RM , Delhanty JD . Preimplantation genetic diagnosis for couples at high risk of Down syndrome pregnancy owing to parental translocation or mosaicism . *J Med Genet* . 1999 ; 36 : 45 - 50
- 8 . Beaulieu Bergeron M , Tran-Thanh D , Fournet JC , Lemyre E , Lemieux N , Bouron-Dal Soglio D . Male pseudohermaphroditism and gonadal mosaicism in a 47,XY,+22 fetus . *Am J Med Genet A* . 2006 ; 140 : 1768 - 1772
- 9 . Engel U , Bohlander SK , Bink K , Hinney B , Laccone F , Bartels I . Pseudo dicentric chromosome (5:21): a rare example of maternal germline mosaicism . *Hum Reprod* . 2001 ; 16 : 63 - 66
- 10 . Rump P , Dijkhuizen T , Sikkema-Raddatz B . Drayer's syndrome of mental retardation, microcephaly, short stature and absent phalanges is caused by a recurrent deletion of chromosome 15(q26.2-->qter) . *Clin Genet* . 2008 ; 74 : 455 - 462
- 11 . Prabhakara K , Wyandt HE , Huang XL , Prasad KS , Ramadevi AR . Recurrent proximal 18p monosomy and 18q trisomy in a family with a maternal pericentric inversion of chromosome 18 . *Ann Genet* . 2004 ; 47 : 297 - 303
- 12 . Masada CT , Olney AH , Fordyce R , Sanger WG . Partial deletion of 14q and partial duplication of 14q in sibs: testicular mosaicism for t(14q;14q) as a common mechanism . *Am J Med Genet* . 1989 ; 34 : 528 - 534
- 13 . Hajianpour A , Murer-Orlando M , Docherty Z . Germ line mosaicism for chromosome 5 Cri-du-chat deletion? . *Am J Hum Genet* . 1991 ; 49 : 217 -
- 14 . Gardner RJ , Dockery HE , Fitzgerald PH . Mosaicism with a normal cell line and an autosomal structural rearrangement . *J Med Genet* . 1994 ; 31 : 108 - 114
- 15 . Chilcote RR , Le Beau MM , Dampier C . Association of red cell spherocytosis with deletion of the short arm of chromosome 8 . *Blood* . 1987 ; 69 : 156 - 159
- 16 . Grossfeld PD , Mattina T , Lai Z . The 11q terminal deletion disorder: A prospective study of 110 cases . *Am J Med Genet Part A* . 2004 ; 129A : 51 - 61
- 17 . Brandriff B , Gordon LA , Crawford BB . Sperm chromosome analysis to assess potential germ cell mosaicism . *Clin Genet* . 1988 ; 34 : 85 - 89
- 18 . Hoo JJ , Lowry RB , Lin CC , Haslam RH . Recurrent de novo interstitial deletion of 16q in two mentally retarded sisters . *Clin Genet* . 1985 ; 27 : 420 - 425
- 19 . Tabolacci E , Zollino M , Lecce R . Two brothers with 22q13.3 deletion syndrome and features suggestive of the Clark-Baraitser syndrome phenotype . *Clin Dysmorphol* . 2005 ; 14 : 127 - 132
- 20 . Röthlisberger B , Kotzot D . Recurrence risk in de novo structural chromosomal rearrangements . *Am J Med Genet A* . 2007 ; 143A : 1708 - 1714
- 21 . Morton NE , Lindsten J , Iselius L , Yee S . Data and theory for a revised chiasma map of man . *Hum Genet* . 1982 ; 62 : 266 - 270
- 22 . Vogel W , Siebers JW , Gunkel J . Phenotypic variation in partial trisomy 4q (author's transl) . *Humangenetik* . 1975 ; 28 : 103 - 112
- 23 . Dutrillaux B , Laurent C , Forabosco A . Partial 4q trisomy. Apropos of 3 cases . *Ann Genet* . 1975 ; 18 : 21 - 27
- 24 . Taylor KM , Francke U , Brown MG , George DL , Kaufhold M . Inverted tandem ("mirror") duplications in human chromosomes: -nv dup 8p, 4q, 22q . *Am J Med Genet* . 1977 ; 1 : 3 - 19
- 25 . Fryns JP , van den Berghe H . Partial duplication of the long arm of chromosome 4 . *Ann Genet* . 1980 ; 23 : 52 - 53
- 26 . Halal F , Vekemans M , Chitayat D . Interstitial tandem direct duplication of the long arm of chromosome 4 (q23–q27) and possible assignment of the structural gene encoding human aspartylglucosaminidase to this segment . *Am J Med Genet* . 1991 ; 39 : 418 - 421

- 27 . Jeziorowska A , Ciesla W , Houck GE Jr . Cytogenetic and molecular identification of a de novo direct duplication of the long arm of chromosome 4(q21.3-->q31.3) . *Am J Med Genet* . 1993 ; 46 : 83 - 87
- 28 . Navarro EG , Romero MC , Exposito IL . De novo interstitial tandem duplication of chromosome 4(q21–q28) . *Am J Med Genet* . 1996 ; 62 : 297 - 299
- 29 . Goodman BK , Capone GT , Hennessey J , Thomas GH . Familial tandem duplication of bands q31.1 to q32.3 on chromosome 4 with mild phenotypic effect . *Am J Med Genet* . 1997 ; 73 : 119 - 124
- 30 . Muraki K , Katano R , Hiraki Y , Ueda K , Fujita H . A case of an interstitial tandem direct duplication of long arm of chromosome 4: 46, XY, dup (4) (q25q31.3) de novo . *Hiroshima J Med Sci* . 1997 ; 46 : 105 - 108
- 31 . Maltby EL , Barnes IC , Bennett CP . Duplication involving band 4q32 with minimal clinical effect . *Am J Med Genet* . 1999 ; 83 : 431 -
- 32 . Elghezal H , Sendi HS , Monastiri K . Large duplication 4q25–q34 with mild clinical effect . *Ann Genet* . 2004 ; 47 : 419 - 422
- 33 . Lin S , Kirk EP , McKenzie F , Francis C , Shalhoub C , Turner AM . De novo interstitial duplication 4(q28.1q35) associated with choanal atresia . *J Paediatr Child Health* . 2004 ; 40 : 401 - 403
- 34 . Hubert E , Sawicka A , Wasilewska E , Midro AT . Partial trisomy of long arm of chromosome 4 as a result of dir dup (4)(q27q31.3) de novo . *Genet Couns* . 2006 ; 17 : 211 - 218
- 35 . Otsuka T , Fujinaka H , Imamura M , Tanaka Y , Hayakawa H , Tomizawa S . Duplication of chromosome 4q: renal pathology of two siblings . *Am J Med Genet A* . 2005 ; 134 : 330 - 333
- 36 . Cernakova I , Kvasnicova M , Lovasova Z . A duplication dup(4)(q28q35.2) de novo in a newborn . *Biomed Pap Med Fac Univ Palacky Olomouc Czech Repub* . 2006 ; 150 : 113 - 116
- 37 . ECARUCA Database ID3940 . (<http://agserver01.azn.nl:8080/ecaruca/ecaruca.jsp>)
- 38 . DECIPHER Database ID251350 . (<https://decipher.sanger.ac.uk/application/>)
- 39 . Ribes V , Stutzmann F , Bianchetti L , Guillemot F , Dolle P , Le Roux I . Combinatorial signalling controls Neurogenin2 expression at the onset of spinal neurogenesis . *Dev Biol* . 2008 ; 321 : 470 - 481
- 40 . Wong RL , Chow KL . Depletion of Mab2111 and Mab2112 messages in mouse embryo arrests axial turning, and impairs notochord and neural tube differentiation . *Teratology* . 2002 ; 65 : 70 - 77
- 41 . Narisawa-Saito M , Iwakura Y , Kawamura M . Brain-derived neurotrophic factor regulates surface expression of alpha-amino-3-hydroxy-5-methyl-4-isoxazolepropionic acid receptors by enhancing the N-ethylmaleimide-sensitive factor/GluR2 interaction in developing neocortical neurons . *J Biol Chem* . 2002 ; 277 : 40901 - 40910

Figure 1

R banding partial karyotype of chromosome 4 from trophoblast cell showing additional material on the long arm of one chromosome 4 (right) (A). Chromosome 4 DNA dye-swap profile from array-based CGH analysis showing gain (duplication) for oligonucleotides located in 4q22.2q32.3 region for case 1 (B) and case 2 (C).

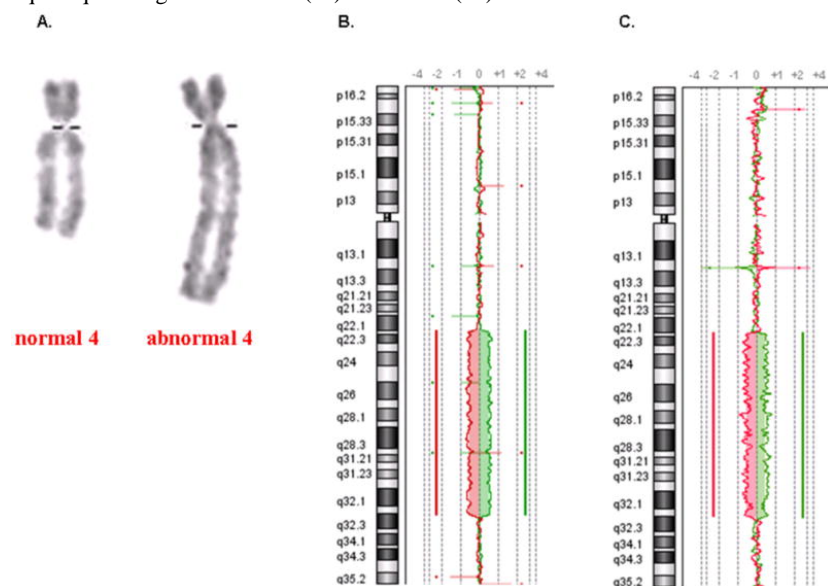


Figure 2

A. D4S3334 microsatellite marker profile showing maternal origin of duplicated alleles for both cases **B.** D4S194 microsatellite marker profile showing an interchromosomal rearrangement for case 1 and an intrachromosomal rearrangement for case 2.

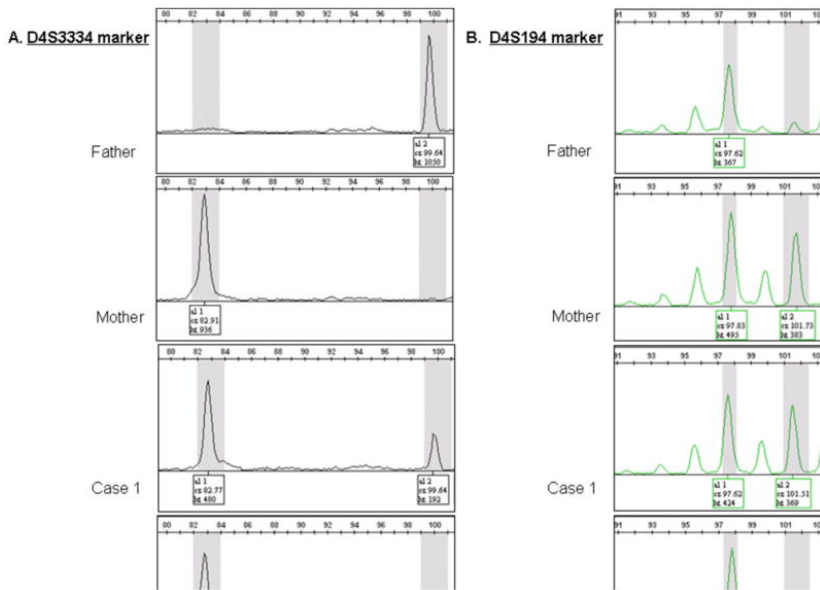


Figure 3

A possible pedigree (blood cells) of the four members of the family with haplotype analysis in the 4q26q28 region (informative markers) showing the allelic recombination. Maternal alleles are circled.

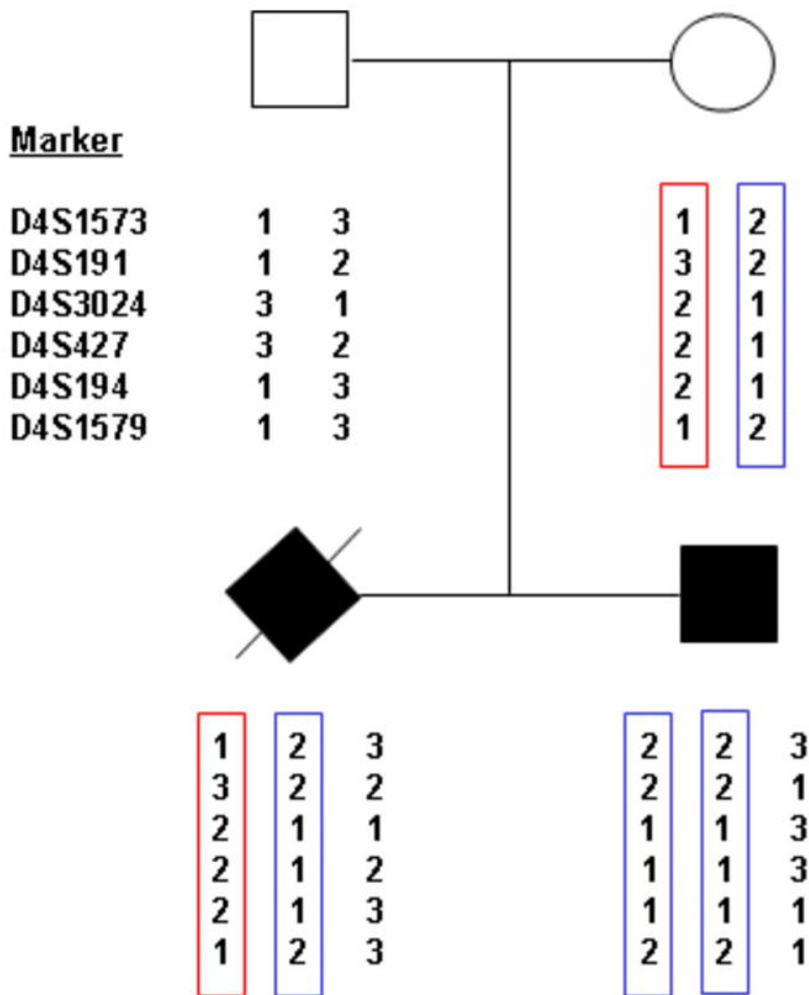


Figure 4

Schematic representation of the two hypotheses explaining chromosome 4 rearrangement during ovarian gametes production. Crossover involving the duplicated segment could result on a meiotic process (**A**) or on a mitotic process (**B**). In both situations, four identical gametes could be produced.

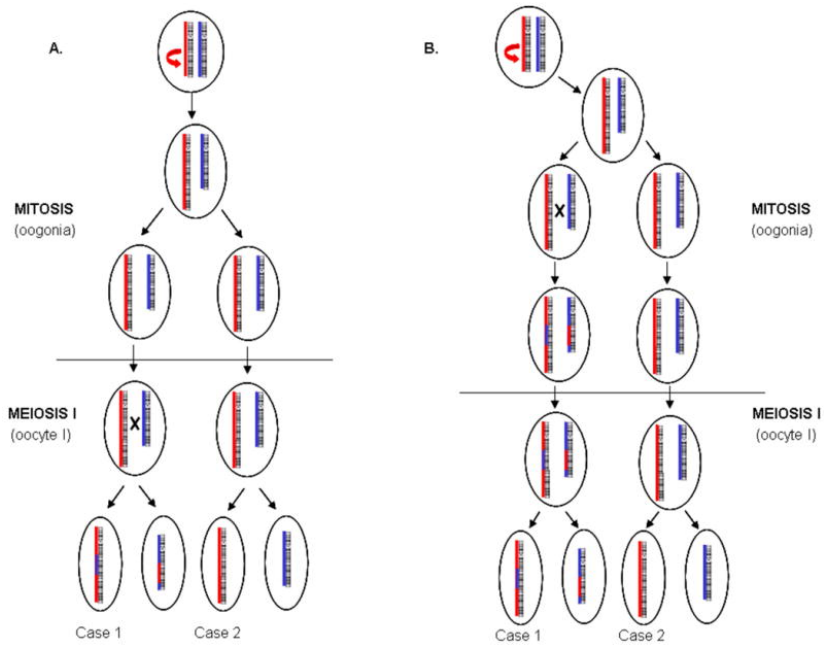


Table 1

Oligonucleotide primer characteristics for microsatellite analysis

Marker name	Chromosome position	GenBank Accession number	Dyes	Forward primer (5'-3')	Reverse primer (5'-3')	Amplicon size (pb)
D4S1573	4q26	Z23890	NED	ACATGGAGAATCTTTTAGTAGCA	CTTTTGAGATACCCCTATCAGT	101–113
D4S191	4q26	L15744 M84926	6FAM	AATAGGGAGCAATAAGGTGT	TTTTTATTATGTTTGCTGCTC	86–90
D4S3024	4q26	Z51607	VIC	CTGGAAGCCAGGTAGGA	AACACTTAGAAGCTTGCAGCC	79–99
D4S427	4q27	Z17128	VIC	GGACCTCCTTGCTTCG	CCCCTTAGGTTGCTTGT	142–166
D4S430	4q27	Z17169	6FAM	GGATGTGAGGAGTTCTGAATTTTG	ACTTTTCTGAGGACCCAGTCTTG	162
D4S194	4q28.1	M84929	VIC	CTAAGGGATGACTATATCCT	GATCTGATTACATGTCCGT	97–109
D4S2959	4q28	Z51165	VIC	AGCTTCCATGGTCATTAGAGT	TAGGGTCTCCAAAGAACAGA	124–156
D4S422	4q28	Z17010	6FAM	GGCAAGACTCCGTCTCAA	TGAAGTAAAATTTGGGAGATTGT	75–97
D4S1579	4q28	Z23955	6FAM	CTTCCTGACTCCCACCTGGTTT	TATGCAGTCACTGGAGCATCCG	151
D4S2939	4q31.2	Z52783	PET	TTTCCACCTGGCCTTAT	CTCTTGAAGCCCTGAAGTTT	137–163
D4S3334	4q31.21	G10535	NED	GGCCAACAGAGCAGGATC	GCCAAGAGAGTGAGACTCCA	84–105
D4S1565	4q31.21	Z23855	NED	CCGTAACACAAAAAACAGATTTCAAG	GGCTGGATAACTCTGAAGAAAGG	158
D4S192	4q31.21	M84927	PET	GATCCTCAAGTGGAGTTTG	TTCAAGCACTGAAAGGGATG	85–95

Table 2

Chromosome 4 microsatellite analyses

Marker	Band	Father		Mother		Case 1			Case 2			Mitotic or meiotic recombination
D4S1573	4q26	1	3	1	2	1	2	3	2	2	3	+
D4S191	4q26	1	2	2	3	2	2	3	1	2	2	+
D4S3024	4q26	1	3	1	2	1	1	2	1	1	3	+
D4S427	4q27	2	3	1	2	1	2	2	1	1	3	+
D4S430	4q27	1	2	1	1	1	1	2	1	1	1	ni
D4S194	4q28.1	1	3	1	2	1	2	3	1	1	1	+
D4S2959	4q28	1	1	1	1	1	1	1	1	1	1	ni
D4S422	4q28	1	1	2	2	1	2	2	1	2	2	ni
D4S1579	4q28	1	3	1	2	1	2	3	1	2	2	+
D4S2939	4q31.2	1	2	2	2	1	2	2	2	2	2	ni
D4S3334	4q31.21	2	2	1	1	1	1	2	1	1	2	ni
D4S1565	4q31.21	1	2	1	1	1	1	2	1	1	1	ni
D4S192	4q31.21	1	1	1	1	1	1	1	1	1	1	ni

1, 2, 3, arbitrary units for allele sizes; ni, not informative