



HAL
open science

Plasma estrone sulfate assay in men: Comparison of radioimmunoassay, mass spectrometry coupled to gas chromatography (GC-MS), and liquid chromatography-tandem mass spectrometry (LC-MS/MS).

Frank Giton, Patrick Caron, René Bérubé, Alain Bélanger, Olivier Barbier,
Jean Fiet

► **To cite this version:**

Frank Giton, Patrick Caron, René Bérubé, Alain Bélanger, Olivier Barbier, et al.. Plasma estrone sulfate assay in men: Comparison of radioimmunoassay, mass spectrometry coupled to gas chromatography (GC-MS), and liquid chromatography-tandem mass spectrometry (LC-MS/MS).: Plasma estrone sulfate assay in men: comparison between four different assay methods. *Clinica Chimica Acta*, 2010, 411 (17-18), pp.1208-13. 10.1016/j.cca.2010.04.022 . inserm-00515188

HAL Id: inserm-00515188

<https://inserm.hal.science/inserm-00515188>

Submitted on 6 Sep 2010

HAL is a multi-disciplinary open access archive for the deposit and dissemination of scientific research documents, whether they are published or not. The documents may come from teaching and research institutions in France or abroad, or from public or private research centers.

L'archive ouverte pluridisciplinaire **HAL**, est destinée au dépôt et à la diffusion de documents scientifiques de niveau recherche, publiés ou non, émanant des établissements d'enseignement et de recherche français ou étrangers, des laboratoires publics ou privés.

Plasma estrone sulfate assay in men: comparison of Radioimmunoassay, Mass Spectrometry coupled to Gas Chromatography (GC-MS), and Liquid Chromatography - Tandem Mass Spectrometry (LC-MS/MS)

Frank Giton^{a, b, *}, Caron Patrick^c, Bérubé René^d, Bélanger Alain^e, Barbier Olivier^c, Jean Fiet^b.

^a AP-HP CIB GHU Sud, Hôpital Henri Mondor, Faculté de Médecine, 8 rue du Général Sarrail, 94010 Créteil, France

^b Inserm IMRB U955 Eq07, CHU Henri Mondor, Faculté de Médecine, 8 rue du Général Sarrail, 94010 Créteil, France

^c Laboratory of Molecular Pharmacology, Centre de Recherches du Centre Hospitalier Universitaire de Québec (CR-CHUQ) and Faculty of Pharmacy, Laval University, Québec City, Québec G1V 4G2, Canada.

^d Bioanalytical services, Centre de Recherche du Centre Hospitalier Universitaire de Québec (CR-CHUQ), Québec City, Québec G1V 4G2, Canada.

^e Laboratory of Molecular Endocrinology and Oncology, Centre de Recherche du Centre Hospitalier Universitaire de Québec (CR-CHUQ) and Faculty of Medicine, Laval University, Québec City, Québec G1V 4G2, Canada.

Acknowledgments:

The authors thank Dr. Noah Hardy for editing the manuscript.

OB lab is supported by funds from the Canadian Institute For Health Research (MOP-84338).

Financial Disclosures: none declared

Corresponding author:

Frank Giton

Centre de Recherches Chirurgicales - Faculté de Médecine, 8 rue du Général Sarrail, 94010 Créteil cedex, France.

Tel: +33 1 49 81 35 58

Fax: +33 1 49 81 35 52

E-mail address: giton@univ-paris12.fr

ABSTRACT

Background: Estrogens are involved in the natural history of the prostate cancer and estrone sulfate, the quantitatively main circulating plasma estrogen in men, has been associated with an aggressive form of this cancer. A convenient and accurate plasma assay of this steroid has become important.

Methods: We simultaneously assayed estrone sulfate in the plasma of one hundred men aged 30-50 years, according to LC-MS/MS, GC-MS after solvolysis of E₁S, radioimmunoassay after a chromatographic purification step, and a direct RIA commercial kit.

Results: Estrone sulfate plasma levels obtained with the first three methods were not significantly different. However, estrone sulfate levels measured by the direct RIA were threefold higher than those obtained by the first three methods. We showed that the excessively high estrone sulfate levels obtained with the direct RIA kit had two origins: interference by high dehydroepiandrosterone sulfate plasma levels in men, and estrone sulfate inaccurate low concentrations in the standards.

Conclusion: The LC-MS/MS method can be considered as an optimum option for clinical laboratory. The GC-MS method requires solvolysis to estrone, but allows simultaneous unconjugated steroid measurement. RIA method, with chromatographic purification, is cumbersome, but less expensive. DSL-5400 kit yielded estrone sulfate plasma levels that were too high.

1. Introduction

Quantitatively, estrone sulfate (E_1S) is the major plasma estrogen in both men and in women [1]. Although this estrogen is not directly active on estrogen receptors, it becomes active in many tissues after hydrolysis [2, 3] and its reduction to active estradiol (E_2) by various 17 β -hydroxysteroid dehydrogenases enzymes [4, 5]. Several tissues, whose prostate, contain the enzyme machinery required to convert E_1S to E_2 [6]. Estrogens appear to be involved in the natural history of prostate cancer (PCa) [7-11]. We previously demonstrated an association between E_1S and aggressive PCa [12]. Therefore to determine the potency of circulating estrogens it is extremely important to determine the real concentrations of this steroid. The use of radioimmunoassay (RIA) has been well documented in the literature. For routine analysis in clinical laboratories, several authors reported RIA methods [13-18]. We described, with accuracy and precision, a specific E_1S radioimmunoassay involving a chromatographic purification C_{18} step [13]. In an attempt to replace this specific but cumbersome RIA assay method, we tried a direct convenient E_1S kit DSL-5400. In the present study, this direct E_1S RIA method was compared with previously described E_1S RIA [13] and with mass spectrometry coupled either with gas chromatography (GC-MS) or liquid chromatography (LC-MS/MS) in plasma samples from men [19].

2. Materials and methods

2.1. Subjects

One-hundred healthy, volunteer men aged 30-50 were recruited in a healthcare center (IRSA, Tours, France). The ethical committee of the institution reviewed and approved the study. Plasma was separated from blood samples collected between 8:00 AM and 10:00 AM after a 12-h overnight fast.

2.2. Methods

Four assay methods, LC-MS/MS, GC-MS, RIA after C₁₈ chromatographic purification, and direct RIA using a DSL-5400 kit, were carried out simultaneously.

2.2.1. Analytical E₁S standards

The E₁S analytical standard used to quantify E₁S by LC-MS/MS, GC-MS, and RIA with chromatography was a sodium salt obtained from Research Plus Laboratory (1887-5; Barnegat, NJ, USA). As ascertained by chemical analysis, this powder contained 40.2 and 6.75 % (w/w) Tris and water, respectively. The deuterated internal standard (E₁S-d₄, or sodium estrone-2, 4, 16, 16-d₄ sulfate) was obtained from C/D/N Isotopes, Inc., (Montréal, Canada).

2.2.2. HPLC-UV analysis of the E₁S standard

To determine whether the stock solution of E₁S contained a significant proportion of the unconjugated estrone steroid (i.e., E₁), HPLC-UV analysis was carried out. For this purpose, the stock solution (255.1 mmol/L) used for the standard curve preparation was diluted five times in ethanol, and 5 µL were injected into the chromatographic system (Alliance 2695, Waters, Milford, MA, USA). E₁ and E₁S were separated with a 5 µm Luna Phenyl Hexyl 75 x 4.6 mm column (Phenomenex, Torrance, CA, USA). In all the analyses, solvent A corresponded to water 4 mM ammonium acetate, solvent B to methanol 0.1 % ammonium acetate, and solvent C to acetonitrile. E₁ and E₁S were eluted at a flow rate of 0.8 mL/min. Initial conditions were 55 % A, 40 % B, and 5 % C, followed by a linear gradient to 10 % A, 85 % B and 5 % C in 6 min. This condition was maintained for 1 min, after which the column was re-equilibrated to initial conditions for an additional 9 min. E₁ and E₁S were detected using a Waters 2996 photo diode array at a wavelength of 200 nm.

2.2.3. Sulfatase hydrolysis

To further ensure the reference concentration, the E₁S standard was subjected to enzymatic sulfatase hydrolysis prior to GC-MS E₁ quantification. For this purpose, 100 µL of a 28.54 nmol/L E₁S solution was incubated at 37°C for 1 hour in the presence of 20 units of human sulfatase (Sigma) in a final volume of 500 µL of a sodium acetate acetic acid buffer (pH 5). The digestion products were then frozen and kept at -80°C until GC-MS quantification. For this purpose, digestion products sustained E₁ derivatization with Pyridine (Pierce) / anhydrous ethyl acetate (500 µL; 1/99; v/v), then pentafluorobenzoyl-Cl (Sigma Aldrich) / anhydrous ethyl acetate, and the final extracts were reconstituted in 50 µL of isooctane and transferred to conical vials for injection into the GC-MS (see 2.2.6.).

2.2.4. LC-MS/MS assay (method I)

Briefly, as previously published [19], plasma samples (100 µL) were diluted in PBS (2 mL) containing a deuterated internal E₁S standard, then solid-phase extracted using Oasis HLB SPE columns. E₁S analytes were eluted in 4 mL of methanol then evaporated at 35°C and reconstituted in 125 µL of methanol:water (50:50, v:v). The chromatographic system consisted of an Alliance 2690 Waters (Milford, MA, USA). Analytes were separated with a 100 x 4.6 mm, 3.5 µm particle size C₁₈ Phenomenex Luna column (Torrance, CA, USA). In all analyses, solvent A corresponded to water 0.1 % ammonium hydroxide, and solvent B to methanol 0.1 % ammonium hydroxide. E₁S was eluted at a flow rate of 1.0 mL/min with a split ratio of 1:4. The initial conditions were 40 % A and 60 % B, followed by a linear gradient to 85 B in 3 min. This condition was maintained for 2 min, and then the column was flushed with 95 % B for 2 min and re-equilibrated to initial conditions for an additional 2 min. E₁S was detected using a Sciex Api 3000 triple quadrupole mass spectrometer equipped with

TurboIonsprayTM source operating in negative ion mode (Applied Biosystems Inc., Foster City, CA, USA), and the MRM measurement through m/z 349 at 269 and m/z 353.2 at 273 transitions for E₁S and E₁S-d₄, respectively [19].

2.2.5. GC-MS assay (method II)

The plasma of 100 male subjects was assayed simultaneously with other human samples in 10 runs.

2.2.5.1 Separation of non-conjugated steroids from conjugated steroids in plasma samples

500 μ L of plasma samples, controls, and standards were added to a methanol solution (50 μ L) containing a mixture of deuterated unconjugated steroid internal standards and 2.69 pmol of deuterated E₁S. The tubes were vortexed for 1 min. Three mL of 1-chlorobutane was added to each tube and mixed. After centrifugation, the aqueous lower phase was frozen and the upper organic phase collected for possible analysis of non-conjugated steroids.

2.2.5.2. Deproteinization of aqueous lower-phase extract obtained from plasma and standard samples

The aqueous lower phases (containing the conjugated steroids of the plasma samples) and the E₁S standard samples were added to pure methanol (3 mL) vortexed for 1 min, and left to stand overnight at -20°C. They were then centrifuged for 30 min at 4°C (3300 t/min). The supernatant was collected and evaporated at 60°C until dryness with a TurboVap® LV concentration workstation (Caliper Life Sciences, Roissy-Charles de Gaulle, France).

2.2.5.3. Acid solvolysis

The dried residues were redissolved in NaCl 9 gr/L (0.5 mL), H₂SO₄ (2N) (0.1 mL), and ethyl acetate (3 mL). After vortexing, the tubes were covered with aluminum paper and let stand at 37°C overnight in a water bath. Ethyl acetate was then added to complete the initial volume, then vortexed for 1 min and centrifuged for 10 min at 2500 t/min. The organic upper phase was collected in a new tube and evaporated to dryness. The dry residue was neutralized with 0.5 mL NaHCO₃ (50 mM) [14].

2.2.6. GC-MS measurement of the free E₁ produced by solvolysis of E₁S. (derived from Labrie, et al., [19])

2.2.6.1. Extraction of free E₁ produced by E₁S solvolysis

1-chlorobutane (2.5 mL) was added to all tubes, which were then vortexed for 2 min. After centrifugation (3300 rpm), the 1-chlorobutane extracts were collected and purified on conditioned Varian LC-Si SPE columns. The columns and adsorbed material were then washed with ethyl acetate / hexane (6 mL; 1/9, v/v). Free E₁ was eluted using ethyl acetate / hexane (4 mL; 1/1, v/v), then evaporated at 60°C.

2.2.6.2. Derivatization of E₁

Pyridine (Pierce) / anhydrous ethyl acetate (500 µL; 1/99; v/v), then pentafluorobenzoyl-Cl (Sigma Aldrich) / anhydrous ethyl acetate (50 µL; 1/10; w/v) were added to the dried residue of free steroids and incubated 30 min at 60°C. After evaporation, a solution of NaHCO₃ (0.5 M; 1 mL) was added to the tubes, which were then let stand for 10 min at room temperature. Hexane (2.5 mL) was then added to them and the mixture vortexed for 2 min. The hexane phases were transferred to new tubes and evaporated at 50°C. The final extracts were reconstituted in 50 µL of isooctane and transferred to conical vials for injection into the GC-MS.

2.2.6.3. GC-MS analysis

The 6890N GC system (Agilent Technologies, Palaiseau, France) for E₁ analysis uses a 50 % phenyl – 50 % methylpolysiloxane Varian VF-17MS capillary column (id: 20 m x 0.15 mm, film thickness 0.15 µm) in splitless mode with helium as the carrier gas. E₁ and deuterated E₁ were detected using an HP 5973N quadrupole mass spectrometer (Agilent Technologies) equipped with a chemical ionization source and operating in single ion monitoring (SIM) mode. The linearity of E₁ measurement was confirmed by plotting the ratio of the E₁ peak response / E₁-d₄ peak response to the concentration of E₁S for each calibration standard.

The injection port and transfer line temperatures were respectively 310 and 300°C. The mass spectrometer source and quadrupole temperatures were respectively 200 and 110°C. The oven temperature was linearly ramped from 110 to 308°C at 22°C/min and held at 308°C for 4.85 min. The two target ions were m/z 464 for E₁ and 468 for E₁-d₄.

2.2.7. RIA with chromatographic separation (method III)

As previously reported [13], after monitored extraction of E₁S, separation of E₁S from DHEAS was carried out by chromatography on C₁₈ Hypersil phase minicolumns (Thermo Fisher, Villebon-sur-Yvette, 91963 Courtaboeuf, France). The chromatographic step was carried out using the Visiprep Vacuum Manifold (Supelco), in order to help the entry of the solvents through the hypersil phase. All the solvents used in the chromatography step were a mixture of methanol/H₂O, 25/75, v/v.

The minicolumns kept in pure methanol, were regenerated by successively adding 6 ml of water, then 12 ml methanol/H₂O, 25/75, v/v, then passed through the phase. The vacuum was

stopped in order to transfer the 0.5 ml of extract, containing the conjugated plasma steroids into the minicolumns.

After introducing the 0.5 ml of re-dissolved extract, 2.5 ml of solvent was immediately added to the minicolumns, but the eluates were not kept. Release the depression and add another volume of 2.5 ml of solvent. Now, this chromatographic eluate was kept, and evaporated to dryness.

After re-dissolving, the purified eluate subjected to RIA, using an E₁S-6-carboxymethyloxime/BSA antibody and tritiated E₁S. After overnight incubation at 25°C, we added dextran-charcoal, incubated 15 min and centrifuged. The supernatants were decanted into the scintillation liquid and counted in a Tri-Card 2300 TR Liquid Scintillation Analyzer (Packard).

2.2.8. Direct RIA method using DSL-5400 kit (method IV)

A direct RIA (DSL-5400 kit, Webster TX, USA) was used according to manufacturer's instructions. Briefly, 0.1 mL of plasma, controls, and standards were added to conical polystyrene tubes, followed by E₁S ¹²⁵I reagent (100 µL) and E₁S anti-serum (100 µL). The mixture was incubated 180 min while stirring at 25°C. A goat anti-rabbit globulin gamma + polyethylene glycol precipitating reagent was then added. After 10 min of incubation, the mixture was centrifuged, the supernatant aspirated, and the tubes counted in a Wallac Wizard 1470 Automatic Gamma Counter (PerkinElmer, Courtaboeuf, France).

2.2.9. DHEAS RIA assay

DHEAS was assayed with a commercial RIA kit (Ref. IM 0729, Immunotech Beckman Coulter, 13009 Marseille, France).

2.3. Statistical analysis

E1S plasma levels comparison using the reported four methods were assessed using the non-parametric Wilcoxon matched pairs test and the non-parametric concordance test of Kendall.

3. Results

3.1. Additional quality controls for the analytical standards

HPLC-UV analysis of the E₁S standard purchased from Research Plus (USA) revealed that it did not contain detectable concentration of unconjugated E₁. Furthermore, no significant differences were observed between the mean \pm SD (n = 5) E₁ concentration obtained after sulfatase hydrolysis of E₁S (29.22 \pm 1.92 nmol/L) and the calculated concentration expected (28.51 nmol/L). This observation further ensured the purity of the E₁S analytical standard.

3.2. Analytical qualities of the four methods

3.2.1. Linearity

The curve-response ratios (varying amounts of E₁ / constant quantities of deuterated E₁) / measured concentration of LC-MS/MS and GC-MS) were linear. For LC-MS/MS, the obtained coefficient of determination r^2 in 10 consecutive runs was > 0.999 ; for GC-MS the r^2 was higher than 0.997.

The concentration ranges of the four methods were the following (in nmol/L): 0.214 to 28.57 for method I, 0.134 to 16.11 for method II, 0.252 to 16.11 for method III, and 0.134 to 67.13 for method IV.

3.2.2. LLOQ

The Lower Limit of Quantification (LLOQ) for E₁S, defined as the lowest concentration of the analyte that could be determined with a signal-to-noise ratio of 10 or greater, were 0.214 nmol/L \pm 0.022 (n = 10) for LC-MS/MS, and 0.134 nmol/L \pm 0.016 (n = 10) for GC-MS. The low detectable dose of E₁S was 0.094 nmol/L \pm 0.014 for RIA ³H, and 0.027 nmol/L for the DSL-5400 kit (table 1).

3.2.3. Precision and accuracy

E₁S inter-day precision and accuracy measured with the methods studied are reported in table 1. On the other hand, inter assay CVs were 4.93, 2.81 and 1.86%, and intra assay CVs were 2.97, 1.65 and 1.15% for LC-MS/MS (method I), when assayed with low (0.64 nmol/L), intermediate (14.28 nmol/L) and high (22.55 nmol/L) quality controls. With GC-MS (method II), inter- and intra-assay CVs (%) were 6.79, 3.19, 2.68, and 4.11, 1.93, 1.63, for quality control samples containing 1.34 nmol/L, 4.03 nmol/L, and 8.06 nmol/L, respectively. With the RIA ³H (method III), inter- and intra-assay CVs (%) were 7.41, 1.96, 2.71, and 6.10, 1.95, 2.67, for quality control samples containing 1.34 nmol/L, 4.03 nmol/L, and 8.06 nmol/L, respectively. The interassay CVs using the DSL-5400 kit (method IV) were < 10 % for low (0.21 nmol/L), medium (1.31 nmol/L), and high concentrations (30.34 nmol/L) of quality control samples (DSL-5400 datasheet; revision date: October 17, 2005).

3.2.4. Recovery

The percentage of recovery after adding two quantities of exogenous E₁S (2.68 and 13.4 pmol) to different male plasma samples (n = 5) were between 97 and 98 % for LC-MS/MS and GC-MS, and between 80 and 115 % for RIA ³H and the DSL-5400 kit.

3.2.5. Specificity

The specificity of the RIA methods depends on the cross-reactivity of the antibody with or without a chromatographic purification step prior to immunoassay. With method III, DHEAS (the principal steroid in plasma, the level of which was highest) cross-reactivity with the anti-E₁S antibody was 0.002 %. Moreover, a pre-chromatographic separation of DHEAS from E₁S on C₁₈ Hypersil phase minicolumns was carried out. For method IV (DSL-5400 kit), the specificity of this direct method was based only on anti-E₁S specificity. The cross-reactivity of the DHEAS was reported to be < 0.1 %. In methods I and II (LC-MS/MS and GC-MS), DHEAS and DHEA are totally separated from E₁S and E₁ respectively, as shown in fig. 1 and 2 and the discrimination of the mass spectrometry was ensure by using the detection at 349.2 m/z for LC-MS/MS and 464.4 m/z for GC-MS.

3.3. E₁S plasma levels comparison using the reported four methods

E₁S values (mean, SD, and concentration ranges in nmol/L) obtained by the four methods are reported in table 2. E₁S mean values obtained with the DSL kit were respectively 3.56-, 3.45-, and 3.37- fold higher than those obtained with LC-MS/MS, GC-MS, and RIA ³H. The mean ratios of the results of GC-MS / LC-MS/MS, RIA ³H / LC-MS/MS, and RIA ³H / GC-MS were respectively 1.03, 1.06, and 1.03.

The Wilcoxon paired test showed no significant difference between E₁S results obtained by GC-MS and LC-MS/MS, whereas significant differences were found between E₁S levels measured by RIA ³H and GC-MS, RIA ³H, and LC-MS/MS. E₁S levels measured with the DSL-5400 kit were significantly higher than those obtained with RIA ³H, LC-MS/MS, and GC-MS.

The regression equations and correlations between the methods studied were the following:

DSL-5400 kit = 1.588 LC-MS/MS + 1.125 ($r = 0.914$); GC-MS = 1.005 LC-MS/MS + 0.01 ($r = 0.991$); RIA $^3\text{H} = 1.089 \text{ LC-MS/MS} - 0.021$ ($r = 0.973$) (fig. 3).

The non-parametric Kendall concordance coefficients were the following: GC-MS and LC-MS/MS: 0.9129; LC-MS/MS and RIA ^3H : 0.9078; DSL-5400 kit and LC-MS/MS: 0.7286.

The much higher E_1S results measured using the DSL-5400 kit could be due to a lack of specificity and/or to a different standardization. We first sought possible interference by DHEAS, whose plasma level is 1000- to 10,000-fold higher than that of E_1S .

For this purpose, 0.05 mL of a 5.12 $\mu\text{mol/L}$ concentration DHEAS solution (physiologic concentration level in man) were added to 0.1 mL of the DSL-5400 E_1S kit standards with theoretical concentrations of 0 - 0.134 - 0.54 - 2.69 - 6.71 - 13.43 nmol/L. All these standards were assayed using the DSL-5400 kit antibody. The results are reported in table 3. The assayed E_1S concentrations in DHEAS overloaded standards were much higher than the E_1S in the same standards overloaded with the absence of E_1S , indicating a cross-reaction of DHEAS with the anti- E_1S antibody of the DSL-5400 kit. The interference was higher as the DHEAS concentration increases. Indeed, the different E_1S levels assayed with the kit minus E_1S assayed with LC-MS/MS is significantly correlated to the plasma DHEAS levels ($r = 0.810$).

Comparatively, the DHEAS in the three other methods do not interfere in the E_1S measurement, because DHEA is well separated from E_1 (after solvolysis in the GC-MS

method) and DHEAS is clearly discriminated from E₁S in the RIA ³H and LC-MS/MS methods.

In addition to the lack of specificity of antibody used, a second source of false determination of E₁S could be the amount of E₁S in the standard of the DSL-5400 kit. Indeed, measurement of standards using LC-MS/MS employed in the establishment of the DSL-5400 kit standard curve gave the following values: 0.129 - 0.35 - 1.89 - 8.57 and 42.94 nmol/L, instead of the following theoretical values: 0.134 - 0.54 - 2.69 - 13.43 and 67.13 nmol/L. Consequently, insufficient specificity and non-equivalent E₁S standards were associated in yielding falsely elevated results obtained with the DSL-5400 kit.

4. Discussion

Our data reveal that direct E₁S assay with the DSL-5400 kit led to significant three-fold higher plasma levels than those obtained by mass spectrometry or RIA after chromatographic purification. Two reasons could likely explain this discrepancy: lack of specificity of the kit anti-E₁S antibody against DHEAS (of which there is a high level in human male plasma) and the inaccurate quantity of E₁S in the kit standards.

Brind *et al.* reported in 1989 and 1990 [15-16] that the high levels of DHEAS, which were 1,000- to 10,000-fold higher than E₁S in human adult plasma, and the probable high cross-reactivity of DHEAS with all anti-E₁S antibodies, may lead to false estimations of E₁S levels, and that DHEAS interference may have accounted for the up to fourfold differences in reported mean normal male values [16]. Our group previously showed [13] that when using an anti-E₁S antibody with cross-reactivity of approximately 0.002 %, omission of the chromatographic step to separate E₁S from DHEAS yielded and overestimation of E₁S in

human plasma. The precise cross-reactivity of the anti-E₁S antibody in the DSL-5400 kit is not reported. A direct E₁S RIA method, similar to those employed in the DSL-5400 kit, was reported previously [20] but the interference of DHEAS in E₁S determination is not provided in this paper. Interference of DHEAS in many direct immunoassays for testosterone in male and female plasma has also been reported previously, due to the considerably higher plasma levels of DHEAS than testosterone, associated with insufficient specificity of the anti-testosterone antibody employed [21]. A very recent paper [22] comparing LC-MS/MS with the DSL-5400 kit also reported higher E₁S using the kit and suggested the interference of DHEAS, but do not proved it.

A comparative study of the DLS-5400 kit and the GC-MS/MS method was recently reported [23]. In 32 plasma samples from eight menopausal women, a good correlation was seen between the two methods ($r = 0.96$). A lower correlation ($r = 0.906$) was obtained in the present study with male sera. The discrepancy between these two studies could be due to the low DHEAS blood concentrations in post-menopausal women, which can be almost 5- to 10-fold lower than in adult men [24].

The cross-reactivity of DHEAS in the E₁S assay with the kit explains the overestimation positively correlated with DHEAS ($r = 0.81$, $n = 100$ samples), and that plasma E₁S level measured with the DSL-5400 kit is much more correlated to DHEAS than E₁S measured with one of the other specific methods.

Moreover, contrary to the validated E₁S reference standards used for standardization of methods I, II, and III, the kit's E₁S standards contained smaller quantities of E₁S than expected, resulting in higher levels of assayed E₁S.

Overall, for measuring E₁S in plasma, LC-MS/MS has the advantages of specificity and practicability, GC-MS has a similar specificity, but requires a solvolysis before E₁ measurement, and RIA ³H is cumbersome, but not so expensive.

5. Conclusion

We report on three plasma E₁S assays, two using mass spectrometry and a more classical RIA after chromatographic purification, which yielded similar for plasma E₁S levels, although RIA ³H gave slightly higher E₁S levels than those obtained with the two other mass spectrometry methods. GC-MS requires solvolysis prior to E₁ assay, whereas LC-MS/MS [19] is more practicable and RIA after chromatographic purification requires a less expensive apparatus, but is cumbersome. According to the material available, these methods could allow accurate plasma E₁S level determination, which is very important and useful in oncology and endocrinology [12, 25] since it is a precursor of unconjugated estrogens.

According to our results, the direct E₁S method of the DSL-5400 kit has led to spurious E₁S results in men 'plasma samples.

Acknowledgments

The authors thank Dr. Noah Hardy for editing the manuscript, and Pr Jacques Callebert (Lariboisière Hospital, Paris) for his analytical assistance.

OB lab is supported by funds from the Canadian Institute For Health Research (MOP-84338).

Financial Disclosures: none declared

List of abbreviations

E₁S: Estrone Sulphate, E₁: Estrone, DHEAS: Dehydroepiandrosterone Sulphate, LC-MS/MS: Liquid Chromatography/Mass Spectrometry/Mass Spectrometry, GC-MS: Gas Chromatography/Mass Spectrometry, RIA: Radio Immuno Assay.

References

- [1] Santner SJ, Feil PD, Santen RJ. In situ estrogen production via the estrone sulfatase pathway in breast tumors: relative importance versus the aromatase pathway. *J Clin Endocrinol Metab* 1984;59:29-33.
- [2] Pasqualini JR, Chétrite G. Activity, regulation and expression of sulfatase, sulfotransferase, and 17 β -hydroxysteroid dehydrogenase in breast cancer, in: R. Pasqualini and Benita S. Katzenellenbogen (Ed), *Hormone-dependent cancer*, Marcel Dekker, inc, New York, Basel, Hong-Kong, 1996, pp 25-80.
- [3] Reed MJ, Purohit A, Woo LW, Newman SP, Potter BV. Steroid sulfatase: molecular biology, regulation, and inhibition. *Endocr Rev* 2005;26:171-202.
- [4] Luu-The V, Tremblay P, Labrie F. Characterization of type 12 17beta-hydroxysteroid dehydrogenase, an isoform of type 3 17beta-hydroxysteroid dehydrogenase responsible for estradiol formation in women. *Mol Endocrinol* 2006;20:437-43.
- [5] Vihko P, Härkönen P, Soronen P et al. 17 beta-hydroxysteroid dehydrogenases--their role in pathophysiology. *Mol Cell Endocrinol* 2004;215:83-8.
- [6] Miki Y, Nakata T, Suzuki T et al. Systemic distribution of steroid sulfatase and estrogen sulfotransferase in human adult and fetal tissues. *J Clin Endocrinol Metab* 2002;87:5760-8.
- [7] Bosland MC. Sex steroids and prostate carcinogenesis: integrated, multifactorial working hypothesis. *Ann N Y Acad Sci* 2006;1089:168-76.

[8] Ho SM. Estrogens and anti-estrogens: key mediators of prostate carcinogenesis and new therapeutic candidates. *J Cell Biochem* 2004;91:491-503.

[9] Cussenot O, Azzouzi AR, Nicolaiew N et al. Combination of polymorphisms from genes related to estrogen metabolism and risk of prostate cancers: the hidden face of estrogens. *J Clin Oncol* 2007;25:3596-602.

[10] Ricke WA, McPherson SJ, Bianco JJ, Cunha GR, Wang Y, Risbridger GP. Prostatic hormonal carcinogenesis is mediated by in situ estrogen production and estrogen receptor alpha signaling. *FASEB J* 2008;22:1512-20.

[11] Risbridger GP, Bianco JJ, Ellem SJ, McPherson SJ. Estrogens and prostate cancer. *Endocr Relat Cancer* 2003;10:187-91.

[12] Giton F, de la Taille A, Allory Y et al. Estrone sulfate (E1S). a prognosis marker for tumor aggressiveness in prostate cancer (PCa). *J Steroid Biochem Mol Biol* 2008;109:158-67.

[13] Giton F, Valleix A, Boudou P et al. Specific radioimmunoassay of estrone sulfate. Application to measurement in male plasma. *J Steroid Biochem Mol Biol* 2002;81:85-94.

[14] Pasqualini JR, Cortes-Prieto J, Chetrite G, Talbi M, Ruiz A. Concentrations of estrone, estradiol and their sulfates, and evaluation of sulfatase and aromatase activities in patients with breast fibroadenoma. *Int J Cancer* 1997;70:639-43.

[15] Brind JL, Chervinsky K, Vogleman JH, Orentreich N. Radioimmunoassay of estrone sulfate in the plasma of normal men after a chromatographic procedure that eliminates dehydroepiandrosterone sulfate interference. *Steroids* 1989;54:21-35.

[16] Brind JL, Chervinsky K, Völgelman JH, Orentreich N. Radioimmunoassay of estrone sulfate in the plasma of normal men after a non-chromatographic procedure that eliminates interference from dehydroepiandrosterone sulfate. *Steroids* 1990;55:32-5.

[17] Ciotti PM, Franceschetti F, Bulletti C, Jasonni VM, Bolelli GF. Rapid and specific RIA of serum estrone sulfate with selective solid phase extraction. *J Steroid Biochem* 1989;32:473-4.

[18] Geisler J, Ekse D, Helle H, Duong NK, Lønning PE. An optimised, highly sensitive radioimmunoassay for the simultaneous measurement of estrone, estradiol and estrone sulfate in the ultra-low range in human plasma samples. *J Steroid Biochem Mol Biol* 2008;109:90-5.

[19] Labrie F, Bélanger A, Bélanger P et al. Metabolism of DHEA in postmenopausal women following percutaneous administration. *J Steroid Biochem Mol Biol* 2007;103:178-88.

[20] Ranadive GN, Mistry JS, Damodaran K et al. Rapid, convenient radioimmunoassay of estrone sulfate. *Clin Chem* 1998;44:244-9.

[21] Middle JG. Dehydroepiandrosterone sulphate interferes in many direct immunoassays for testosterone. *Ann Clin Biochem* 2007;44:173-7.

[22] Corona G, Elia C, Casetta B et al. Liquid chromatography tandem mass spectrometry assay for fast and sensitive quantification of estrone-sulfate. *Clin Chim Acta* 2010;411:574-80

[23] Stanway SJ, Purohit A, Reed MJ. Measurement of estrone sulfate in postmenopausal women: comparison of direct RIA and GC-MS/MS methods for monitoring response to endocrine therapy in women with breast cancer. *Anticancer Res* 2007;27:2765-7.

[24] Orentreich N, Brind JL, Rizer RL, Vogelmann JH. Age changes and sex differences in plasma dehydroepiandrosterone sulfate concentrations throughout adulthood. *J Clin Endocrinol Metab* 1984;59:551-5.

[25] Muir M, Romalo G, Wolf L, Elger W, Schweikert HU. Estrone sulfate is a major source of local estrogen formation in human bone. *J Clin Endocrinol Metab* 2004;89:4685-92.

Table 1

E₁S inter-day precision and accuracy measured with the methods studied.

	LLOQ ± SD (nmol/L)	RE (%)	Level 1 ± SD (nmol/L)	RE (%)	Level 2 ± SD (nmol/L)	RE (%)	Level 3 ± SD (nmol/L)	RE (%)
Method I (n = 10) <i>Theoretical concentration</i>	0.214 ± 0.022 <i>0.214</i>	0	22.49 ± 0.42 <i>22.55</i>	-0.3	14.26 ± 0.40 <i>14.28</i>	-0.2	0.63 ± 0.03 <i>0.64</i>	-1.6
Method II (n = 10) <i>Theoretical concentration</i>	0.134 ± 0.016 <i>0.134</i>	0	7.99 ± 0.23 <i>8.06</i>	-0.9	4.02 ± 0.14 <i>4.03</i>	-0.3	1.33 ± 0.09 <i>1.34</i>	-0.8
Method III (n = 10) <i>Theoretical concentration</i>	0.094 ± 0.014 <i>0.091</i>	3.3	8.12 ± 0.22 <i>8.06</i>	0.8	4.08 ± 0.08 <i>4.03</i>	1.2	1.35 ± 0.10 <i>1.34</i>	0.8
*Method IV (n = 8)	0.027	#	30.34 ± 1.66	#	1.32 ± 0.08	#	0.215 ± 0.03	#

(RE = relative error: mean percentage deviation from theoretical value)

(* : DSL-5400 datasheet; revision date: October 17, 2005)

Table 2

E₁S means, SD, (nmol/L) in the one hundred plasma samples measured with the four methods studied.

	LC-MS/MS	GC-MS	RIA (³ H)	DSL-5400 kit
Mean ± SD (nmol/L)	1.53 ± 0.83	1.58 ± 0.86	1.62 ± 0.95	5.46 ± 1.47
Min-Max (nmol/L)	*0.16-4.81	0.16-4.80	0.19-6.15	2.70-10.88

(* : One plasma sample was measured below the reported LLOQ of the LC-MS/MS method)

Table 3

E₁S concentrations of the E₁S kit standards overloaded with physiological concentrations of DHEAS, compared with overloads with the 0 nmol/L E₁S kit standard.

E ₁ S kit standard theoretical concentrations (nmol/L)	E ₁ S assayed concentrations in DHEAS overloaded standards (nmol/L)	E ₁ S assayed concentrations in standard 0 overloaded standards (nmol/L)
0	0.79	0
0.134	1.13	0.161
0.54	1.75	0.52
2.69	4.90	2.72
6.71	9.81	7.01
13.43	16.95	13.64

Fig. 1. E₁S and DHEAS retention times (min) in LC-MS/MS method.

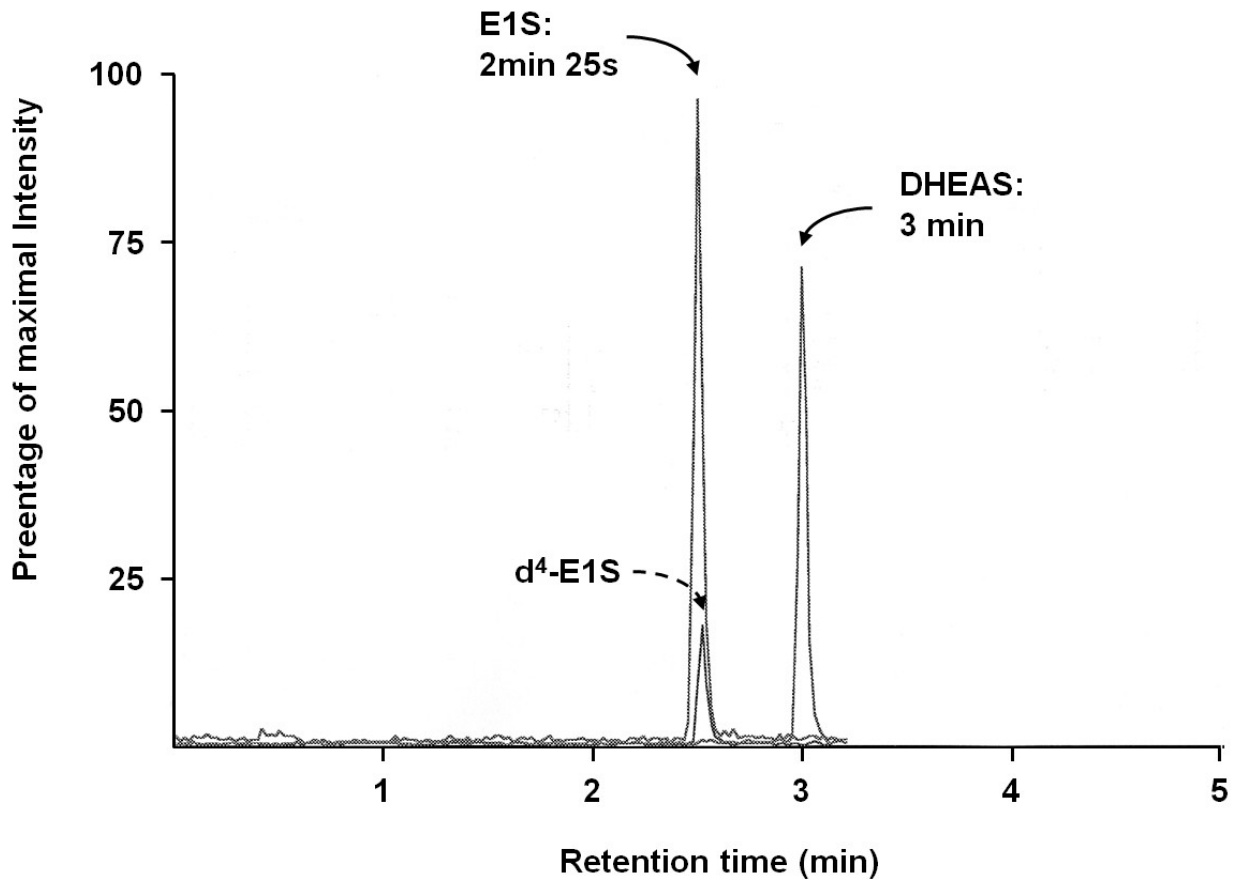


Fig. 2. E₁ and DHEA retention times (min) in GC-MS method after acid solvolysis of E₁S and DHEAS.

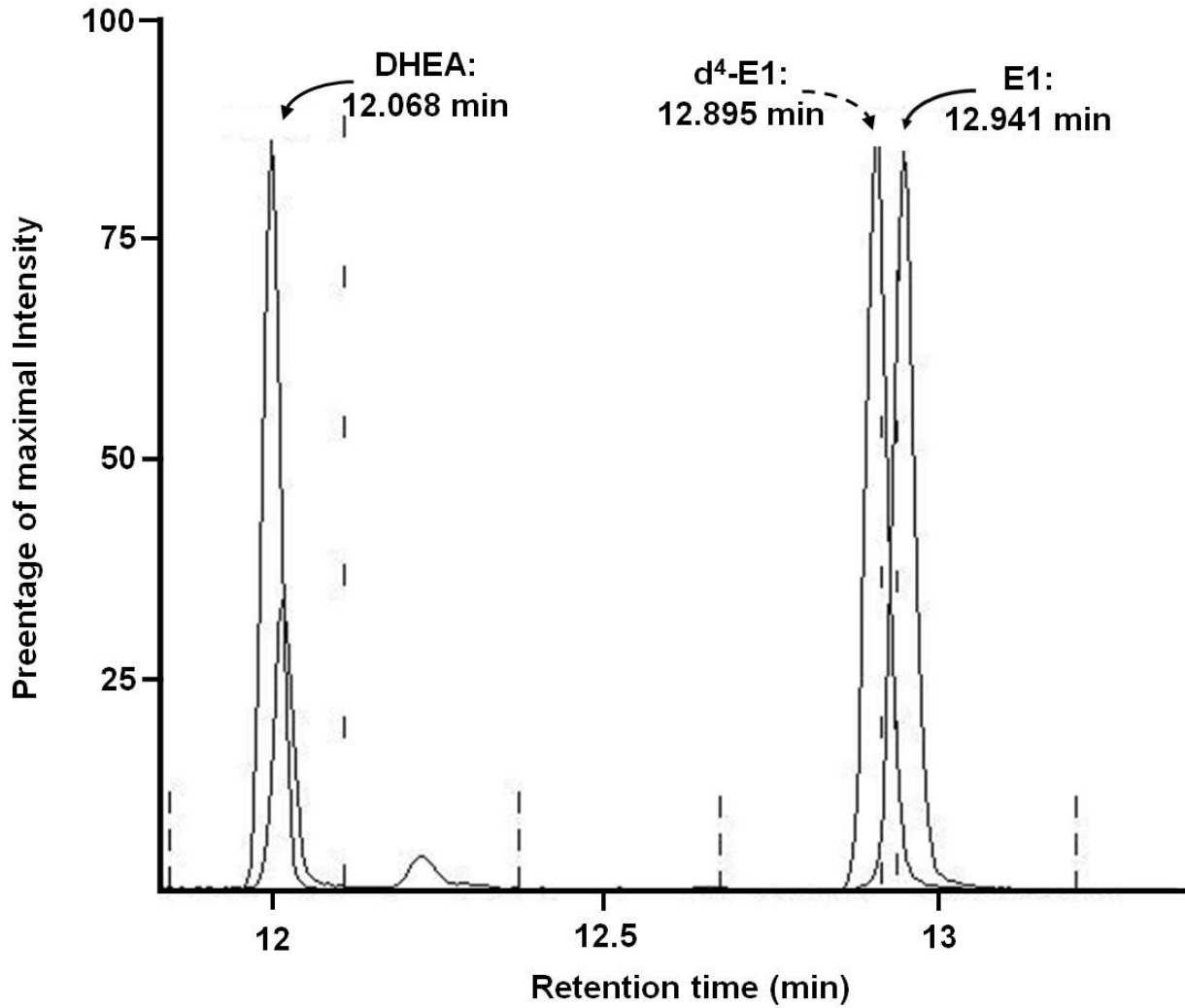


Fig. 3. Correlation plot between E₁S concentrations obtained by LC-MS/MS *versus* GC-MS, RIA after C₁₈ purification step, and direct DSL-5400 commercial kit.

