

## Th17/T<sub>reg</sub> ratio in human graft-versus-host-disease

P Ratajczak<sup>1,2 \*</sup>, A Janin<sup>1,2,3 \*</sup>, R Peffault de Latour<sup>1,2,4,5 §</sup>, C Leboeuf<sup>1,2 §</sup>, A Desveaux<sup>1,2</sup>, K Keyvanfar<sup>5</sup>, M Robin<sup>4</sup>, E Clave<sup>2,6,7</sup>, C Douay<sup>2,6,7</sup>, A Quinquenel<sup>4</sup>, C Pichereau<sup>4</sup>, P Bertheau<sup>1,2,3</sup>, JY Mary<sup>2,8</sup>, and G. Socié<sup>1,2,4</sup>

<sup>1</sup> Inserm, U728, Paris, F-75010, France,

<sup>2</sup> Université Paris 7 - Denis Diderot, Paris, F-75013, France,

<sup>3</sup> AP-HP, Hôpital Saint-Louis, Service de Pathologie, Paris, F-75010, France,

<sup>4</sup> AP-HP, Hôpital Saint-Louis, Service d'Hématologie Greffe, Paris, F-75010, France,

<sup>5</sup> NIH, NHLBI, Hematology Branch, Bethesda, Maryland, USA,

<sup>6</sup> AP-HP, Hôpital Saint-Louis, Laboratoire d'Immunologie et d'Histocompatibilité, Paris, F-75010, France,

<sup>7</sup> Inserm, U940, Paris, F-75010, France,

<sup>8</sup> Inserm, U717, Paris, F-75010, France.

\* Both PR and AJ contributed equally to this study and should be considered co-chairing first authorship.

§ Both RPL and CL contributed equally to this study and should be considered co-chairing authorship.

5 Figures, 3 Tables

Word count: Abstract: 195 words; Text: 3642 words

**Running title: Th17/T<sub>reg</sub> in human GvHD**

Correspondence to: Professor Gérard Socié, MD, PhD

Service d'Hématologie Greffe, & Inserm U728, Hôpital Saint-Louis

1 Av. Vellefaux, 75010 Paris, France.

Phone: +33 1 42 49 98 24; Fax: +33 1 42 49 96 39

E-mail: [gerard.socie@sls.aphp.fr](mailto:gerard.socie@sls.aphp.fr)

## Abstract

Th17 cells have never been explored in human GvHD. We studied the correlation between the presence of Th17 cells in the gastro-intestinal (GI) tract and in the skin with histological and clinical parameters. We first analyzed a cohort of 40 patients with suspected GvHD of the GI tract. TNF, TNF receptors, and Fas expression, and apoptotic cell, CD4<sup>+</sup>IL-17<sup>+</sup> cells (Th17) and CD4<sup>+</sup>Foxp3<sup>+</sup> cells (T<sub>reg</sub>) were quantified. A Th17/T<sub>reg</sub> ratio < 1 correlated both with the clinical diagnosis (p < 0.001), and  $\geq 2$  pathologic grade (p < 0.001). A Th17/T<sub>reg</sub> ratio < 1 also correlated with the intensity of apoptosis of epithelial cells (p = 0.03), Fas expression in the cellular infiltrate (p = 0.003), TNF and TNF receptors expression (p < 0.001). We then assessed Th17/T<sub>reg</sub> ratio in two other independent cohorts; a second cohort of 30 patients and confirmed that Th17/T<sub>reg</sub> ratio < 1 correlated with the pathological grade of GI GvHD. Finally 15 patients with skin GvHD and 11 patients with skin rash but without pathological GvHD were studied. Results in this third cohort of patients with skin disease confirmed those found in patients with GI GvHD. These analyses in 96 patients suggest that Th17/T<sub>reg</sub> ratio could be a sensitive and specific pathological *in situ* biomarker of GvHD.

## Introduction

Graft versus host disease (GvHD) involves dysregulation of inflammatory cytokine cascades and distorted donor cellular response against host alloantigens (reviewed in <sup>1</sup>). The characterization of CD4<sup>+</sup>/interleukin 17 (IL-17)-secreting subset (Th17) and of the regulatory CD4<sup>+</sup>/Foxp3<sup>+</sup> cell (T<sub>reg</sub>) has had a major impact on our understanding of immune processes <sup>2-6</sup>. Th17 and T<sub>reg</sub> might contribute to human autoimmune diseases, including inflammatory bowel disease (IBD) <sup>2-5</sup>. Experimental data suggest a reciprocal relationship between Th17-induced pathology, and T<sub>reg</sub> regulatory role. In murine models, Th17 cells induce autoimmunity through tissue inflammation promotion, and innate immune system mobilization <sup>2-5</sup>. However, in the gut Th17 cells might also have modulatory and protective roles. Murine models provide recent controversial results on the role of Th17 in GvHD <sup>4,7-11</sup>. We are not aware of any published data on Th17 cells in human GvHD. To investigate their potential implication in GvHD-induced inflammation, we studied Th17 and T<sub>reg</sub> in 3 independent cohorts of patients (n=96) who had gut or skin biopsies and their relationship with histological and clinical parameters.

## Patients and methods

### *Patients*

Our primary aim was to study Th17 and Treg populations in the setting of gastro-intestinal (GI) GvHD. Biopsies were performed as diagnostic procedures for digestive symptoms. Clinical grading used the 1994 consensus conference criteria <sup>12</sup> and pathological were performed as previously described <sup>13</sup>. Hospital Saint Louis ethical review board approved the design of this study. Patients with digestive symptoms underwent endoscopy and biopsies before any treatment with steroids. We first took advantage of a first study <sup>13</sup> in which patients biopsies have been extensively studied for Fas, TNF and apoptosis pathways to search for Treg and Th17 infiltration and association with Fas and TNF pathways (if any). Then, we aimed to confirm results of Treg and Th17 localization in an independent cohort of patients with GI GvHD and search for a role (if any) of the intensity of the conditioning regimen. Finally we studied these cell subsets in patient with skin GvHD. Thus, 3 different cohorts of patients (total n=96) were sequentially studied:

1. 40 out of 78 patients from the previously published cohort had available duodenal biopsies. Median age was 34 years. Conditioning regimens (all myeloablative) included total body irradiation (TBI) and cyclophosphamide (n=13), or associated busulfan (Bu) and cyclophosphamide (n=15). Acute lymphoblastic leukemia patients received TBI or Bu with melphalan and cytarabine (n=9). Aplastic

anemia patients received cyclophosphamide and anti-thymocyte globulins. Cyclosporine and methotrexate were used for most patients (n=28). Patients underwent duodenal biopsies for unexplained nausea or vomiting (n= 9) or stage 1-2 diarrhea (n=31).

2. A second cohort of 30 patients with GI biopsy was studied to confirm in an independent series biological results in GI-GvHD. It included:
  - 11 patients (4 males, 7 females; median age 30 years) with pathological GI GvHD who underwent an allogeneic SCT after myeloablative conditioning. Ten patients were grafted for hematological malignancies. All had stage 2 clinical lower GI GvHD at the time of biopsy.
  - 10 patients (6males, 4 females; median age 48 years) who underwent SCT after a reduced intensity conditioning that included fludarabine and 2Gy TBI in 6 patients (according to the Seattle's regimen) and low dose IV busulfan fludarabine and ATG in 4 patients (according to the MD Anderson's regimen). All 10 patients with hematological malignancies had also biopsy-proven GI GvHD (8 patients had stage 1 and 2 patients had stage 2 lower GI GvHD at the time of biopsy).
  - Finally, 9 patients who had no evidence of pathological GvHD at the time of upper GI biopsy were used as controls in this second cohort. These patients (6 males, 3 females; median age 30 years) underwent SCT for hematological malignancies either after a myeloablative (n=5), or a Fludarabine + 2Gy TBI reduced intensity conditioning (n=4) (4 patients had stage 1 lower GI GvHD at the time of biopsy and 5 patients had unexplained nausea / vomiting).
3. Finally, a 3<sup>rd</sup> cohort of 26 patients with skin rash was studied. This series included 10 patients with biopsy-proven acute GVHD, 5 patients with evidence of pathological chronic GvHD and 11 patients without evidence of GvHD after pathological examination of skin biopsies. The 10 patients (7 males, 3 females; median age 34 years) with acute GvHD all underwent SCT for hematological malignancies after a myeloablative conditioning regimen. Four out of the 5 patients with chronic GvHD (3 males, 2 females, median age 43 years) also received a myeloablative conditioning, and all 5 had acute leukemia. Finally among the 11 patients (7 males, 4 females; median age 36 years) without pathological skin GvHD, 9 underwent SCT for malignant diseases and 2 for Fanconi anemia.

### **Methods**

Duodenal biopsies during fiber-optic examination and skin biopsies were performed, as previously described<sup>13-14</sup>. All biopsies were performed before any

steroid treatment, and for GI biopsies two of them used for systematic viral or fungal infection detection. Histological digestive and skin GVHD grading was done as previously described<sup>13</sup>.

TUNEL assay and immunohistochemistry were performed on frozen sections using CD45RA (Dako, Denmark), CD68 (Dako, Denmark), CD95 (Pharmingen, Germany), TNF (Genzyme, United Kingdom), and TNF receptors, TNFr55 and TNFr75 (Ig-G monoclonal antibodies kind gift from MBrockhaus, Switzerland) as primary antibodies. Double immunostainings were performed with Ventana Discovery reagents (Ventana, Arizona). For Foxp3/CD4 or Foxp3/CD8 incubation with monoclonal mouse antibody against human Foxp3 (clone22510, Abcam; dilution1:50), detected by UltraMap detection kit, was followed by incubation with mouse monoclonal antibody against human CD4 (clone4B12, M  narini; dilution1:20) or with monoclonal antibody against human CD8 (cloneCD8/144B, Abcam; dilution1:100) detected by FastRed detection kit. For IL-17/CD4 double immunostaining, incubation with polyclonal rabbit antibody against IL-17 (H-132sc-7927, Santa-Cruz; dilution1:100), detected by UltraMap detection kit, was followed by an incubation with a mouse monoclonal antibody directed against human CD4 (clone 4B12, M  narini; dilution 1:20), detected by FastRed detection kit. Endogenous peroxidase inhibition and nonspecific binding sites blocking were systematically performed. Controls with irrelevant isotypic antibodies, and absence of primary antibody were systematically performed. Double immunofluorescent staining was performed on frozen sections for Foxp3/CD4, IL-17/CD4 and Foxp3/IL-17. Primary antibodies were covalently linked to Alexafluor 488 or Alexafluor 594 using APEX Antibody Labeling Kits (Invitrogen). Sections were incubated in PBS pH 7.4 containing 5% bovine serum albumin for 30 min at room temperature (RT). Monoclonal mouse antibody to CD4 (clone 4B12, M  narini; dilution 1:20), monoclonal mouse antibody to Foxp3 (clone 22510, Abcam; dilution 1:50), or polyclonal rabbit antibody to IL-17 (H-132 sc-7927, Santa-Cruz; dilution 1:100) were applied to sections for 1 hour at RT. Sections were finally mounted in Vectashield medium containing DAPI. CD4 Th17/CD4 T<sub>reg</sub> ratio was expressed as median and inter-quartile range (IQR) of the number of cells per field at 400x magnification.

Examiners were aware of clinical signs and treatment (if any) of the patients at the time of biopsies and for routine GvHD pathological evaluation. However, for Th17/Treg stainings patients were identified by anonymous 7 digits code corresponding to laboratory identification. It is thus unlikely that one examiner could associate patient identification with biopsy code. More importantly, biopsies were independently evaluated by 2 examiners (PR and AJ). In all cases of disagreement between examiners, a common reading was organized to achieve a consensus on count.

### *Flow cytometry and intracellular cytokine staining*

Presence in the peripheral blood mononuclear cells (PBMCs) of CD3<sup>+</sup>CD4<sup>+</sup>IL-17<sup>+</sup> T cells (Th17) and CD3<sup>+</sup>CD4<sup>+</sup>Foxp3<sup>+</sup>CD25<sup>high</sup> (Treg) was evaluated by flow cytometry. PBMCs were separated by density gradient centrifugation with lymphocytes separation medium (Organon, Durham, NC). After cell surface staining, cells were washed and resuspended in fixation/permeabilization solution (BD, Cytotfix/Cytoperm kit; BD pharmingen) and intracellular staining was performed, following the manufacturer's instructions. For the detection of IL-17, PBMCs were incubated for 4 hours with 50 ng/mL phorbol myristate acetate and 750ng/mL ionomycin in the presence of monensin (eBioscience) in tissue culture incubator at 37°C.

Conjugated monoclonal antibodies for human CD3 (clone SK7) and CD4 (clone RPA-T4), were purchased from BD Biosciences. Conjugated monoclonal antibodies for human CD25 (clone BC96), Foxp3 (clone PCH101), and IL-17 (clone eBio64DEC17), were purchased from eBioscience. Monoclonal antibodies were conjugated to either fluorescein isothiocyanate (FITC), phycoerythrin (PE), PE-Cyanin 5 (PE-Cy5), allophycocyanin (APC), allophycocyanin-7 (APC-Cy7), Pacific Blue and Amcyan. Stained cells were all analyzed by a BD LSR II flow cytometer and data were analyzed by FlowJo software (Tree Star).

### *Statistical analyses*

Reproducibility of Th17 and T<sub>reg</sub> counts was assessed through examination of discrepancy levels between the 2 examiners and intraclass correlation estimate with 95% confidence interval<sup>15</sup>. Th17 or T<sub>reg</sub> characteristics (cell numbers or their ratio) were summarized through median level and range. Their ability to predict the existence of a clinical or pathological grade  $\geq 2$  GvHD was assessed through: *Sensitivity*, i.e. proportion of biopsies with a characteristic **lower than** a given limit in patients with acute clinical or pathological grade  $\geq 2$  GvHD. *Specificity*, i.e. proportion of biopsies **with** a characteristic **equal to or higher than** the same limit in patients without acute clinical or pathological grade  $\geq 2$  GvHD. The ability of a characteristic to predict clinical or pathological grade  $\geq 2$  GvHD was tested through 2-sided Fisher exact test, as well as association between Th17/T<sub>reg</sub> ratio with other GvHD pathological markers. For the comparison on proportion of CD4<sup>+</sup>CD25<sup>high</sup>Foxp3<sup>+</sup> cells, of Th17 cells and Th17/T<sub>reg</sub> ratio between the control group and the group with No GvHD on one hand, between the group with No GvHD and the group with acute GvHD on the other hand, Mann-Whitney non parametric test was used. **The same test was used to compare median levels of CD4<sup>+</sup> cell counts, proportion of CD4<sup>+</sup> cells expressing Foxp3 or IL-17 as a function of pathological GvHD grade (0-1 versus 2 or more).**



## Results

Among 100 biopsies evaluated by the 2 examiners (PR, AJ), 96 counts showed a difference of 1 (n=21) or no difference at all (n=75) for Th17 identified by CD4/IL-17 double staining (**Figure 1A,B**). For T<sub>reg</sub> identified by CD4/Foxp3 double staining (**Figure 1C,D**), the corresponding figures were 89, 20 and 69, respectively. Differences were never greater than 2 for Th17 and 3 for T<sub>reg</sub> (3 biopsies). It should be noted that for the 11 discrepancies in Treg evaluation, 10 were for counts above 5. To summarize the high level of reproducibility between examiners, intraclass correlation was estimated to be 0.950 (95% confidence interval 0.927-0.966) for Th17 and 0.937 (95% confidence interval 0.907-0.957) for Treg.

Forty patients with suspected digestive GvHD (nausea/vomiting or diarrhea) had biopsies before any steroid treatment (1<sup>st</sup> cohort); 18 had severe pathologically proven GvHD (pathological stage  $\geq 2$ ) (**Table 1A**). Whatever the severity of acute GvHD, the number of CD4<sup>+</sup> cells did not varied (p=0.63, **Figure 2A**). As identified by CD4/Foxp3 staining, an increased proportion of CD4<sup>+</sup> cells expressing Foxp3 in duodenal biopsies of patients with grade  $\geq 2$  compared with patients with grade  $<2$  was observed (p<0.0001, **Figure 2B**). Conversely, a decreased proportion of CD4<sup>+</sup> cells expressing IL-17 identified by and CD4/IL-17 staining in duodenal biopsies of patients with grade  $\geq 2$  compared with patients with grade  $<2$  was detected (p=0.0013, **Figure 2C**).

The numbers of CD4<sup>+</sup> expressing IL-17 or Foxp3 was low (**Figure 1**): CD4 Th17 ranging from 0 to 8 cells per field with a median of 1 (IQR 0.25-4); CD4 T<sub>reg</sub> median being 4 (IQR 1-6), with a median Th17/T<sub>reg</sub> ratio of  $\frac{1}{2}$  (**Table 1A**). Severe apoptosis, assessed by TUNEL, was found in 29 patients, Fas positive mononuclear cells in 23, significant TNF alpha expression in 20 and TNF receptor 1 in 26 (**Table 1B**).

In the 34 patients with pathological GvHD, CD4 Th17 cells numbers ranged between 0 and 7 with a median of 1, whereas CD4-T<sub>reg</sub> ranged between 0 and 11 with a median of 5 (**Table 1A**). A Th17/T<sub>reg</sub> ratio<1 correlated both with the clinical (sensitivity 74%, specificity 100%, p=0.001), and pathological grade  $\geq 2$  GvHD (sensitivity 94%, specificity 64%, p<0.001). Apoptotic epithelial cells were associated with more than 4 Th17 cells per field in only 3 biopsies but with more than 4 T<sub>reg</sub> cells in 19 out of 34 biopsies. In the 6 biopsies without apoptotic cells, the corresponding figures were 5 and 0, respectively. A similar trend was found for Fas positive mononuclear cells. In the 17 biopsies with Fas negative cells, the corresponding figures were 7 and 1. In 20 biopsies with high TNF alpha

expression, none had more than 4 Th17 cells, while 17 had more than 4 T<sub>reg</sub> cells per field. In 20 biopsies without high TNF expression, the corresponding figures were 8 and 2. As a consequence, a Th17/T<sub>reg</sub> ratio < 1 correlated with the intensity of apoptosis of epithelial cells (quantitative TUNEL assay), with Fas expression in the cellular infiltrate, and interestingly highly correlated with TNF and TNF receptors 1 and 2 expression (p < 0.001 for all) (**Table 1B**).

We next wanted to confirm, in an independent cohort (2<sup>nd</sup> cohort), results concerning Th17 and T<sub>reg</sub> cells in human GI GvHD and to search if the intensity of the conditioning regimen (reduced intensity vs. myeloablative) influences the expression ratio of these 2 cell subsets. As summarized in **Figure 2 and Table 2**, we found nearly the same results than in the previously studied cohort regarding Th17 and T<sub>reg</sub> cell density with regard to GvHD occurrence. However, neither Th17 (p=0.9) or T<sub>reg</sub> cells (p=0.5) numbers, nor Th17/T<sub>reg</sub> were influenced by the type of conditioning regimen.

While Foxp3 has a central role in T<sub>reg</sub> development, it is also clear that Foxp3 upregulation occurs with T cell activation. Thus, as an additional control of the specificity of our results, we used CD8/Foxp3 double staining on the two first cohorts. As shown in Figure 3, CD8<sup>+</sup>Foxp3<sup>+</sup> cells counts were negligible compared with CD8<sup>+</sup> cells in both first and second cohort whatever the GvHD status (median of 1 and 0.5 cells per field for CD8<sup>+</sup>Foxp3<sup>+</sup>, and 30 and 25.5 cells for CD8<sup>+</sup>, respectively) (**Figure 3**).

Since recent experimental results in a mouse model suggest that Th17 cells might be more involved in skin GvHD rather than in GI GvHD <sup>4, 7-11</sup>, we analyzed data in an additional cohort of 25 patients (3<sup>rd</sup> cohort) with acute skin rash or chronic lichenoid skin lesions who underwent skin biopsies (**Figure 4**). As summarized in **Table 3**, we found again similar results regarding Th17 and T<sub>reg</sub> cell ratio with regard to acute GvHD occurrence. Results in chronic GvHD were statistically insignificant with regard to Th17 and T<sub>reg</sub> cell numbers but showed similar trends with regards to Th17/T<sub>reg</sub>.

Finally, we assessed the presence of Th17 and T<sub>reg</sub> subsets in the PBMCs of 31 patients of the second (GI biopsied) and third cohort (skin biopsied). Samples were analyzed from prospectively collected material at a mean of 3 months post transplantation. Five healthy individuals were included as controls. Because some patients were highly lymphopenic after hematopoietic stem cell transplantation, both subsets were detectable in 23 of the 31 patients. Th17 and T<sub>reg</sub> frequencies were then correlated to the presence of GvHD. Within the 23 patients, 8 did not have sign of GvHD at time of sampling while 12 presented



acute and 3 chronic GvHD. The  $T_{reg}$  cell percentage was significantly lower in the 12 patients with acute GvHD than in the 8 patients without GvHD ( $1.6 \pm 0.35\%$  versus  $0.46 \pm 0.1\%$ ;  $p < 0.001$ ) (Figure 5A). For the 3 patients with chronic GvHD, the percentage of  $T_{reg}$  cells was  $1.7 \pm 1.0\%$ . However, we found no correlation between Th17 cell percentage and GvHD occurrence (Figure 5B). The Th17/ $T_{reg}$  ratio was statistically no different between patients with or without signs of acute GvHD ( $p = 0.14$ , Figure 5C).

## Discussion

In total, 96 patients' biopsies have been analyzed here to assess the potential role of Th17 cells in human GvHD. We first explored a cohort of 40 patients with suspected GvHD of the GI tract. Th17/ $T_{reg}$  correlated both with the clinical diagnosis and disease severity as assessed by pathological grade or by the intensity of the alloimmune reaction (apoptosis of epithelial cells, Fas expression, TNF and TNF receptors). We then assessed Th17/ $T_{reg}$  ratio in two other independent cohorts; a second cohort of patients with GI biopsies confirmed that Th17/ $T_{reg}$  ratio  $< 1$  correlated both with the clinical diagnosis and pathological grade irrespective of what the pre-transplant conditioning regimen was. Finally patients with skin GvHD were studied, and results in this last cohort of patients with skin disease confirmed those found in patients with GI-GvHD.

The Th17/ $T_{reg}$  ratio we found in this human GvHD study does not support the hypothesis of a reciprocal relationship between Th17-induced pathology and  $T_{reg}$  regulatory role proposed for autoimmune diseases<sup>2,16</sup>, especially in the GI tract. CD4 Th17 cells have been characterized in situ in human autoimmune diseases including Sjogren's syndrome, Crohn's disease and rheumatoid arthritis in humans<sup>17-20</sup>. In this first study of Th17 in human GvHD we found a lower number of CD4 Th17 cells than in our 5 controls of inflammatory active Crohn's disease. This lower percentage of Th17 in GvHD as compared to Crohn's disease should be kept in mind since this latter disease is usually considered as the prototypic Th1-Th17 GI disease<sup>21</sup>.  $T_{reg}$  cells numbers we detected in the GvHD biopsies are in agreement with Rieger and coworkers study<sup>22</sup> who found a mean of 5.4 cells/field and few  $T_{reg}$  cells around crypts in acute GvHD patients. It is of note however that, contrary to these authors, we did not find increased numbers of  $T_{reg}$  in patients without GvHD.

Today all our knowledge on the role of Th17 cells in GvHD comes from experimental mice studies that lead to divergent conclusions. The role of Th17 has been studied in idiopathic pneumonia syndrome and chronic GvHD rodent models<sup>8-9</sup>. Th17 was most recently studied in experimental acute GvHD. Carlson and coworkers<sup>7</sup> reported that high dose of *in vitro* differentiated Th17

mediated severe cutaneous and pulmonary lesions. Yi and coworkers<sup>11</sup> showed that IL-17<sup>-/-</sup> donor T cells had high Th1 differentiation and induced severe acute GvHD damage. This is in accordance with the results of our human study, where a low Th17/T<sub>reg</sub> ratio also correlated with severe clinical and pathological GvHD, apoptosis intensity and TNF alpha expression. However, a limitation inherent to our human study design is that no sequential biopsies (i.e. in non symptomatic patients, early after transplantation) were performed. Thus recent experimental results of Kapelle and coworkers<sup>4</sup> and of Iclozan and colleagues<sup>23</sup> suggesting that Th17 contributes to the early phase of CD4-mediated GvHD cannot be ascertained in the present study. In another recent study Yi and coworkers<sup>10</sup> used either wild-type mice donor CD4<sup>+</sup> T cells that lead to a predominantly Th1 cell mediated disease that preferentially mediated GVHD tissue damage in the gut and liver. However, when authors used IFN- $\gamma$  <sup>-/-</sup> CD4<sup>+</sup> T cells GvHD that enhanced Th2 and Th17 differentiation and exacerbated tissue damage in the lung and skin; absence of both IL-4 and IFN- $\gamma$  resulted in enhanced Th17 differentiation and preferential, although not exclusive, tissue damage in the skin. The tissue-specific GVHD mediated by Th1, Th2, and Th17 cells was, in part, associated with their tissue-specific migration mediated by differential expression of chemokine receptors. In view of such results and those obtained using Th17-expanded cells that also induced a skin prominent disease, we also analyzed skin biopsies but we did not find evidence for Th17 cells expansion in skin GvHD in humans. It should also be stressed that cyclosporine A use in human to prevent GvHD also inhibit IL-17 secretion<sup>24</sup> and may have altered fate of Th17 cells in human GvHD.

Most recently the relationship between Th17 and T<sub>reg</sub> has gained a further level of complexity. Indeed, CD25<sup>high</sup>Foxp3<sup>+</sup> regulatory T cells might be able to differentiate into IL-17-producing cells<sup>25-26</sup>. This has also to be considered for GvHD analysis in human. However we never found cells co-expressing IL-17 and Foxp3 in human biopsies.

Although this study represents the first one in human GvHD and is based on the analysis of nearly one hundred biopsies, we acknowledge some limitations. First larger number of patients with chronic GvHD should be studied. Second, a biopsy is only able to depict a situation (photography) at a given time post transplant even if this time correspond to early onset of clinical signs. **Analyses we performed on these 2 cell subsets in peripheral blood found no correlation between Th17 cell percentage and GvHD occurrence and the Th17/Treg ratio was not statistically different between patients with or without signs of GvHD.** Thus with the limitation inherent to human studies we cannot rule out that early pathogenetic mechanisms in human GvHD involve a prominent role of the Th17

cell subset. This is particularly relevant in view of recent results by Litjens and coworkers<sup>27</sup> who demonstrated *in vitro* that the repertoire of alloreactive CD4<sup>+</sup> T cells is biased to a Th17 response with an average 24% of alloreactive CD154<sup>+</sup>CD4<sup>+</sup> memory T cells producing IL-17 after polyclonal stimulation. Unexpectedly, in this study mixed cell cultures from HLA-identical donors also generated alloreactive CD154<sup>+</sup>CD4<sup>+</sup> T cells and yielded the highest frequency compared with HLA-non identical combinations.

In conclusion Th17 in human GvHD were not associated with evidence of severe tissue damage at disease onset, but *in situ* quantification of the Th17/T<sub>reg</sub> ratio was a specific marker of human GvHD.

**Acknowledgment:**

This research was supported by a grant from the European Commission StemDiagnostics Contract No LSHB-CT-2007-037703, and by Institut National du Cancer and Cancéropôle Ile de France, Conseil régional Ile de France and Agence de Biomédecine. RPL received a bursary award from the Aplastic Anemia and Myelodysplastic Syndrome International Foundation Mrs. Stéphanie Belhadj for excellent technical assistance.

***Responsibilities***

GS designed the study and with PR and AJ analyzed the data and wrote the manuscript; CL and AD performed immunochemistry analyses; PB contributed to immunohistochemistry analyses; EC and CD collected and prepared PBMC; KK and RPL performed flow cytometry and analyzed data; CP and AQ collected and summarized clinical data; MR PR and RPL recruited patients and participated in manuscript discussion; JYM performed statistical analyses and actively participated to the writing of the manuscript.

## References

1. Socie G, Blazar BR. Acute graft-versus-host disease: from the bench to the bedside. *Blood*. Nov 12 2009;114(20):4327-4336.
2. Bettelli E, Korn T, Oukka M, Kuchroo VK. Induction and effector functions of T(H)17 cells. *Nature*. Jun 19 2008;453(7198):1051-1057.
3. Bettelli E, Oukka M, Kuchroo VK. T(H)-17 cells in the circle of immunity and autoimmunity. *Nat Immunol*. Apr 2007;8(4):345-350.
4. Kappel LW, Goldberg GL, King CG, et al. IL-17 contributes to CD4-mediated graft-versus-host disease. *Blood*. Oct 17 2008.
5. Laurence A, O'Shea JJ. T(H)-17 differentiation: of mice and men. *Nat Immunol*. Sep 2007;8(9):903-905.
6. McGeachy MJ, Cua DJ. Th17 cell differentiation: the long and winding road. *Immunity*. Apr 2008;28(4):445-453.
7. Carlson MJ, West ML, Coghill JM, Panoskaltsis-Mortari A, Blazar BR, Serody JS. In vitro differentiated TH17 cells mediate lethal acute graft-versus-host disease with severe cutaneous and pulmonary pathology. *Blood*. Oct 28 2008.
8. Chen X, Vodanovic-Jankovic S, Johnson B, Keller M, Komorowski R, Drobyski WR. Absence of regulatory T-cell control of TH1 and TH17 cells is responsible for the autoimmune-mediated pathology in chronic graft-versus-host disease. *Blood*. Nov 15 2007;110(10):3804-3813.
9. Mauermann N, Burian J, von Garnier C, et al. Interferon-gamma regulates idiopathic pneumonia syndrome, a Th17+CD4+ T-cell-mediated graft-versus-host disease. *Am J Respir Crit Care Med*. Aug 15 2008;178(4):379-388.
10. Yi T, Chen Y, Wang L, et al. Reciprocal differentiation and tissue-specific pathogenesis of Th1, Th2, and Th17 cells in graft-versus-host disease. *Blood*. Oct 1 2009;114(14):3101-3112.
11. Yi T, Zhao D, Lin CL, et al. Absence of donor Th17 leads to augmented Th1 differentiation and exacerbated acute graft-versus-host disease. *Blood*. Sep 1 2008;112(5):2101-2110.
12. Przepiorka D, Weisdorf D, Martin P, et al. 1994 Consensus Conference on Acute GVHD Grading. *Bone Marrow Transplant*. Jun 1995;15(6):825-828.
13. Socie G, Mary JY, Lemann M, et al. Prognostic value of apoptotic cells and infiltrating neutrophils in graft-versus-host disease of the gastrointestinal tract in humans: TNF and Fas expression. *Blood*. Jan 1 2004;103(1):50-57.
14. Murata H, Janin A, Leboeuf C, et al. Donor-derived cells and human graft-versus-host disease of the skin. *Blood*. Mar 15 2007;109(6):2663-2665.
15. Donner A, Wells G. A comparison of confidence interval methods for the intraclass correlation coefficient. *Biometrics*. Jun 1986;42(2):401-412.

16. Yang J, Chu Y, Yang X, et al. Th17 and natural Treg cell population dynamics in systemic lupus erythematosus. *Arthritis Rheum.* May 2009;60(5):1472-1483.
17. Christodoulou MI, Kapsogeorgou EK, Moutsopoulos NM, Moutsopoulos HM. Foxp3+ T-regulatory cells in Sjogren's syndrome: correlation with the grade of the autoimmune lesion and certain adverse prognostic factors. *Am J Pathol.* Nov 2008;173(5):1389-1396.
18. Fujino S, Andoh A, Bamba S, et al. Increased expression of interleukin 17 in inflammatory bowel disease. *Gut.* Jan 2003;52(1):65-70.
19. Pene J, Chevalier S, Preisser L, et al. Chronically inflamed human tissues are infiltrated by highly differentiated Th17 lymphocytes. *J Immunol.* Jun 1 2008;180(11):7423-7430.
20. Sakai A, Sugawara Y, Kuroishi T, Sasano T, Sugawara S. Identification of IL-18 and Th17 cells in salivary glands of patients with Sjogren's syndrome, and amplification of IL-17-mediated secretion of inflammatory cytokines from salivary gland cells by IL-18. *J Immunol.* Aug 15 2008;181(4):2898-2906.
21. Brand S. Crohn's disease: Th1, Th17 or both? The change of a paradigm: new immunological and genetic insights implicate Th17 cells in the pathogenesis of Crohn's disease. *Gut.* Aug 2009;58(8):1152-1167.
22. Rieger K, Loddenkemper C, Maul J, et al. Mucosal FOXP3+ regulatory T cells are numerically deficient in acute and chronic GvHD. *Blood.* Feb 15 2006;107(4):1717-1723.
23. Iclozan C, Yu Y, Liu C, et al. T helper17 cells are sufficient but not necessary to induce acute graft-versus-host disease. *Biol Blood Marrow Transplant.* Feb;16(2):170-178.
24. Zhang C, Zhang J, Yang B, Wu C. Cyclosporin A inhibits the production of IL-17 by memory Th17 cells from healthy individuals and patients with rheumatoid arthritis. *Cytokine.* Jun 2008;42(3):345-352.
25. Koenen HJ, Smeets RL, Vink PM, van Rijssen E, Boots AM, Joosten I. Human CD25highFoxp3pos regulatory T cells differentiate into IL-17-producing cells. *Blood.* Sep 15 2008;112(6):2340-2352.
26. Lochner M, Peduto L, Cherrier M, et al. In vivo equilibrium of proinflammatory IL-17+ and regulatory IL-10+ Foxp3+ RORgamma + T cells. *J Exp Med.* Jun 9 2008;205(6):1381-1393.
27. Litjens NH, van de Wetering J, van Besouw NM, Betjes MG. The human alloreactive CD4+ T-cell repertoire is biased to a Th17 response and the frequency is inversely related to the number of HLA class II mismatches. *Blood.* Oct 29 2009;114(18):3947-3955.



## **Legend to Table**

**Table 1A:** Th17 and T<sub>reg</sub> numbers in 40 patients with and without clinical or pathological digestive GvHD (1<sup>st</sup> cohort)

**Table 1B:** Correlations of Th17 and T<sub>reg</sub> numbers, and Th17/T<sub>reg</sub> ratio with other GvHD pathological markers (1<sup>st</sup> cohort)

**Table 2:** Th17 and T<sub>reg</sub> numbers in 30 patients with and without pathological digestive GvHD, according to conditioning regimen (2<sup>nd</sup> cohort)

**Table 3:** Th17 and T<sub>reg</sub> numbers in 26 patients with and without pathological cutaneous GvHD (3<sup>rd</sup> cohort)

**Table1 A**

	Total (n=40)	GvHD clinical (final diagnosis)		GvHD pathologically proven			
		No (n=6)	yes (n=34)	No (n=6)	Yes (n=34)	Grade 0-1 (n=22)	Grade 2-4 (n=18)
<b>Th17</b> median (range)	1.0 (0-8)	5.5 (1-8)	1.0 (0-7)	5.5 (4-8)	1.0 (0-7)	2.0 (0-8)	0.5 (0-4)
<b>Treg</b> median (range)	4.0 (0-11)	0.0 (0-1)	5.0 (0-11)	0.0 (0-3)	5.0 (0-11)	2.0 (0-6)	6.5 (0-11)
<b>Th17/Treg*</b> median (range)	0.5 (0.05-16)	9.0 (2-16)	0.4 (0.05-10)	10 (2.3-16)	0.4 (0.05-6)	1.5 (0.13-16)	0.1 (0.05-4)
<b>Th17/Treg &lt;1</b> n (%)	25 (63%)	0 (0%)	25 (74%)	0 (0%)	25 (74%)	8 (36%)	17 (94%)

**Table1 B**

	Th17 >4	Treg >4	Th17/Treg < 1	p <sup>1</sup>
<b><i>Apoptotic epithelial cells (TUNEL)</i></b>				
No (n=6)	5	0	0	0.001
Yes (n=34)	3	19	25	
More than 5 per field (n=29)	0	10	15	0.03
Less than 5 per field (n=11)	8	9	10	
<b><i>Apoptotic cells within the infiltrate (TUNEL)</i></b>				
No (n=19)	8	3	7	0.03
Yes (n=21)	0	16	18	
<b><i>Fas expression within the cellular infiltrate</i></b>				
No (n=17)	7	1	6	0.003
Yes (n=23)	1	18	19	
More than 5 cells per field (n=8)	0	7	1	0.2
Less than 5 cells per field (n=32)	8	12	18	
<b><i>TNF receptor 1</i></b>				
No (n=14)	8	0	3	<0.001
Yes (n=26)	0	19	22	
<b><i>TNF receptor 2</i></b>				
No (15)	8	0	3	<0.001
Yes (n=25)	0	19	22	
<b><i>TNF</i></b>				
Less than 20 cells per field (n=20)	8	2	7	<0.001
More than 20 cells per field (n=20)	0	17	18	

<sup>1</sup> Fischer's exact test for the association of Th17/Treg <1 with the other pathological parameters

Table 2

	Acute GvHD MAC n=11	Acute GvHD RIC n= 10	No GvHD n= 9	GvHD after MAC vs. no GvHD p (Mann Whitney)	GvHD after RIC vs. no GvHD p (Mann Whitney)
Th17median (range)	0 (0-1)	0 (0-2)	3 (2-7)	.0001	.0002
Treg median (range)	3 (1-7)	3.5 (2-6)	0 (0-1)	.0002	.0002
Th17/Treg median (range)	0.25 (0.14-0.50)	0.21 (0.10-0.50)	4.00 (3.00-10.00)	.0001	.0002
Th17/Treg <1* n (%)	11 (100%)	10 (100%)	0 (0%)	<.0001*	<.0001*

\* Fischer exact test

**Table 3**

	<b>Acute GvHD</b>	<b>Chronic GvHD</b>	<b>No GvHD</b>	<b>Acute GvHD vs. no GvHD p (Mann Whitney)</b>	<b>Chronic GvHD vs. no GvHD p (Mann Whitney)</b>
	<b>n= 10</b>	<b>n= 5</b>	<b>n= 11</b>		
<b>Th17</b> median (range)	0 (0-2)	1 (1-2)	2 (1-5)	.0004	.062
<b>Treg</b> median (range)	2.5 (2-5)	3 (2-3)	1 (0-2)	.0003	.25
<b>Th17/Treg</b> median (range)	0.25 (0.17-0.40)	0.50 (0.33-1.00)	2.00 (1.50-4.00)	.0001	.001
<b>Th17/Treg &lt;1*</b> n (%)	10 (100%)	4 (80%)	0 (0%)	<.0001*	<.003*

\* Fischer exact test

## Legends to Figure

### **Figure 1**

#### ***Th17 and T<sub>reg</sub> distribution in gut biopsies of patients with mild and severe GvHD***

Th17 and T<sub>reg</sub> were identified by the expression of IL-17 or Foxp3, respectively in CD4<sup>+</sup> cells using 2-colour immunohistochemistry (IL-17 in brown : A, B; Foxp3 in brown C, D; and CD4 in red; A,B,C,D)

Th17 cells were more numerous in patients with mild GvHD (arrowhead: A) whereas T<sub>reg</sub> were present in patients with severe GvHD (arrowhead: D)

Counts of double immunostained cells were independently assessed by 2 pathologists (PR and AJ) on an Olympus AX 70 microscope with wide-field eyepiece number 26.5. At 400x magnification, this wide-field eyepiece provided a field size of 0.344 mm<sup>2</sup>.

### **Figure 2**

#### ***CD4<sup>+</sup> counts, CD4<sup>+</sup>Foxp3<sup>+</sup> and CD4<sup>+</sup>IL-17<sup>+</sup> cell proportions in duodenal biopsies of patients with grade <2 or ≥ 2 (1<sup>st</sup> and 2<sup>nd</sup> cohorts).***

A, Absolute number of CD4<sup>+</sup> cells per field in the first and second cohorts of duodenal biopsies

B, Percentage of CD4<sup>+</sup> cells expressing Foxp3 in the same cohorts

C, Percentage of CD4<sup>+</sup> cells expressing IL-17 in the same cohorts

An increased proportion of CD4<sup>+</sup> cells express Foxp3 in duodenal biopsies of patients with grade ≥ 2 compared with patients with grade <2 in the two cohorts.

A decreased proportion of CD4<sup>+</sup> cells express IL-17 in duodenal biopsies of patients with grade ≥ 2 compared with patients with grade <2 in the two cohorts.

### **Figure 3**

#### ***CD8<sup>+</sup> and CD8<sup>+</sup>Foxp3<sup>+</sup> cells in duodenal biopsies in the 1<sup>st</sup> and 2<sup>nd</sup> cohorts***

Number of CD8<sup>+</sup> and CD8<sup>+</sup>Foxp3<sup>+</sup> cells in GvHD patients with grade <2 or ≥ 2.

While Foxp3 has a central role in T<sub>reg</sub> development, it is also clear that Foxp3 upregulation occurs with T cell activation. Thus, as a control of the specificity, CD8/Foxp3 double staining was performed on the two first cohorts.

Counts showed that most of the CD8<sup>+</sup> cells are not activated in the 2 independent cohorts of patients who underwent duodenal biopsies.

### **Figure 4**

#### ***Double immunofluorescent staining with IL-17 and Foxp3 in skin biopsies of patients with acute, chronic and no GvHD***

A, Skin biopsies showed infiltrates and apoptotic bodies (arrows) in acute and chronic lichenoid eruption but not in patients without GvHD.



B, Overlay of double immunofluorescent staining with IL-17 (red) and Foxp3 (green) antibodies showed Foxp3 expressing cells in skin biopsies of patients with acute and chronic GVHD and IL17-expressing cells in skin biopsies of patients without GVHD.

C, Enlargement of the stained cells showed that no of them expressed both IL-17 and Foxp3.

### **Figure 5**

#### ***Flow cytometry analyses of Th17, and of T<sub>regs</sub> in the peripheral blood of 31 patients with acute, chronic or no chronic GvHD***

Flow cytometry analyses of Th17, and of T<sub>regs</sub> in the peripheral blood of 23 patients with acute, chronic or no chronic GvHD

PBMCs from healthy controls (n = 5) and patients with GvHD (acute, n=12 and chronic, n=3) or without (n=8) were stained with anti-CD3, anti-CD4, anti-CD25 antibodies followed by intracellular Foxp3 antibody and examined by flow cytometry. Intracellular IL-17 antibody was also examined by flow cytometry after stimulation for 6 hours with PMA and Ionomycine.

A, Frequencies of T<sub>regs</sub> in patients and controls

B, Frequencies of Th17 T cells in patients and controls

C, Th17/T<sub>regs</sub> ratio in patients and controls

The mean value of each group is represented (—).

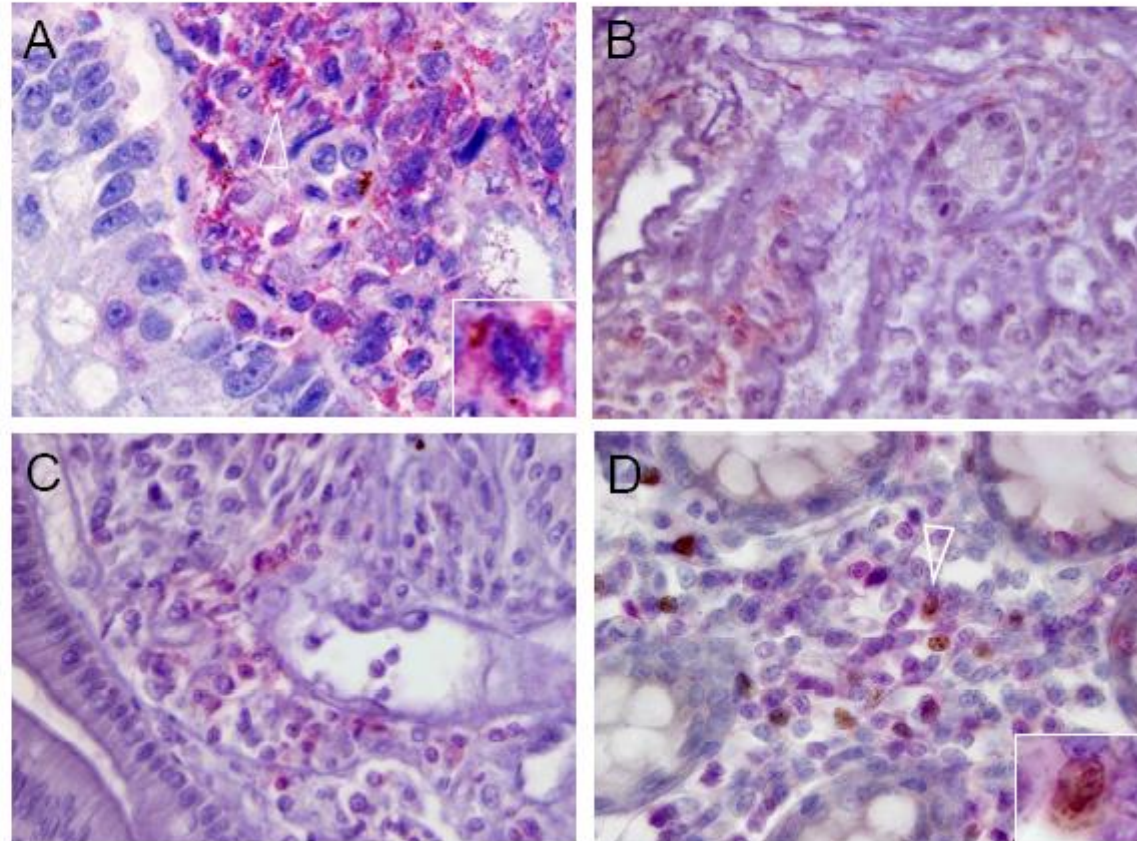
Figure 1

**CD4**  
(membranous, red)  
+  
**IL17**  
(cytoplasmic, brown)

**CD4**  
(membranous, red)  
+  
**FoxP3**  
(nuclear, brown)

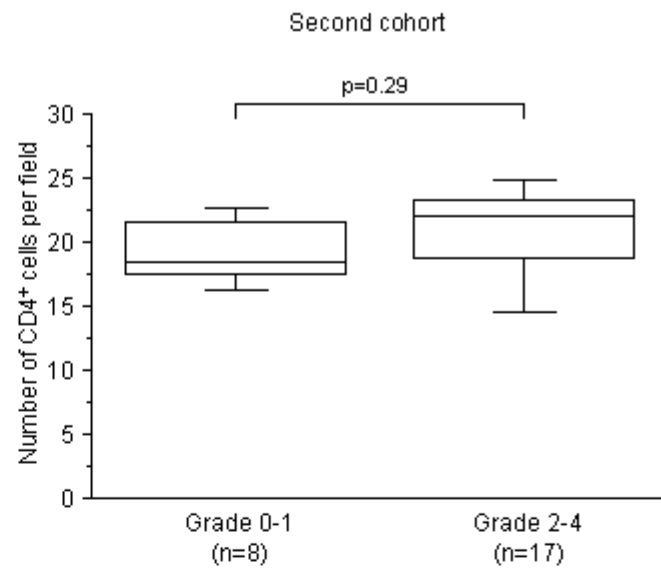
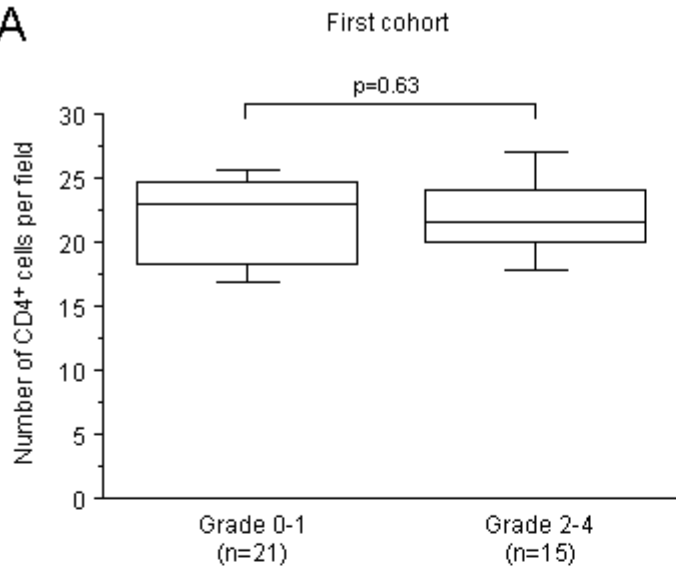
Mild GVHD

Severe GVHD

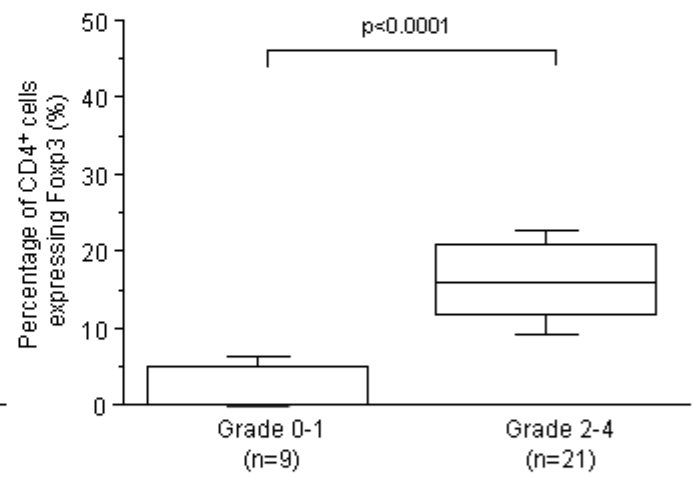
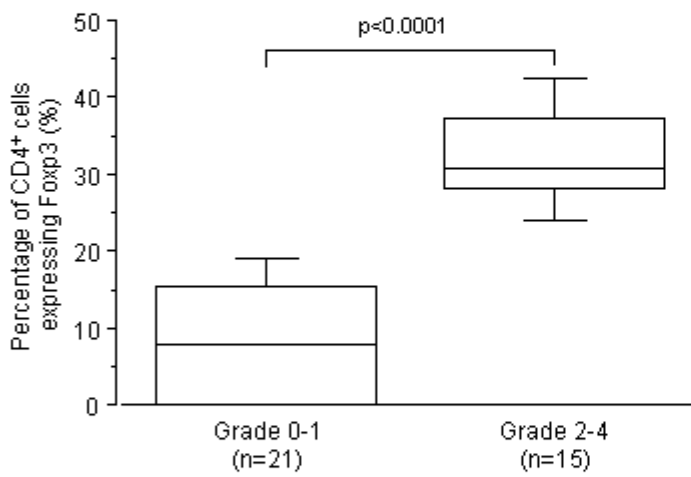


**Figure 2**

**A**



**B**



**C**

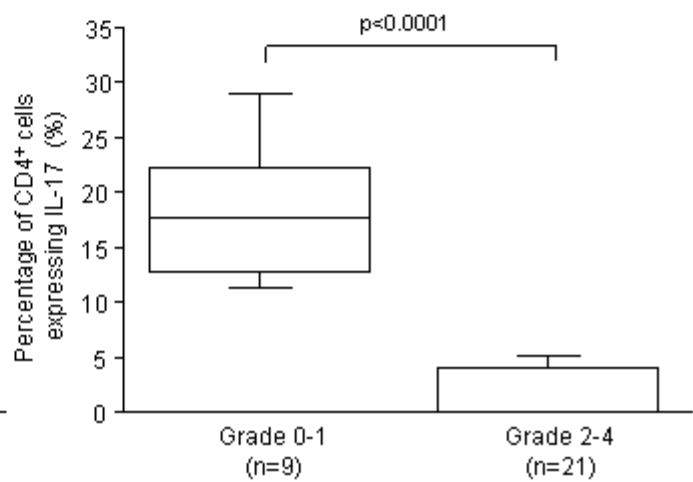
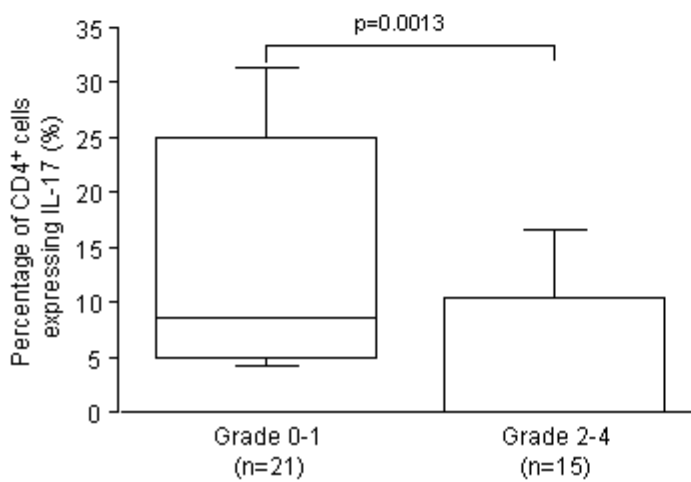


Figure 3

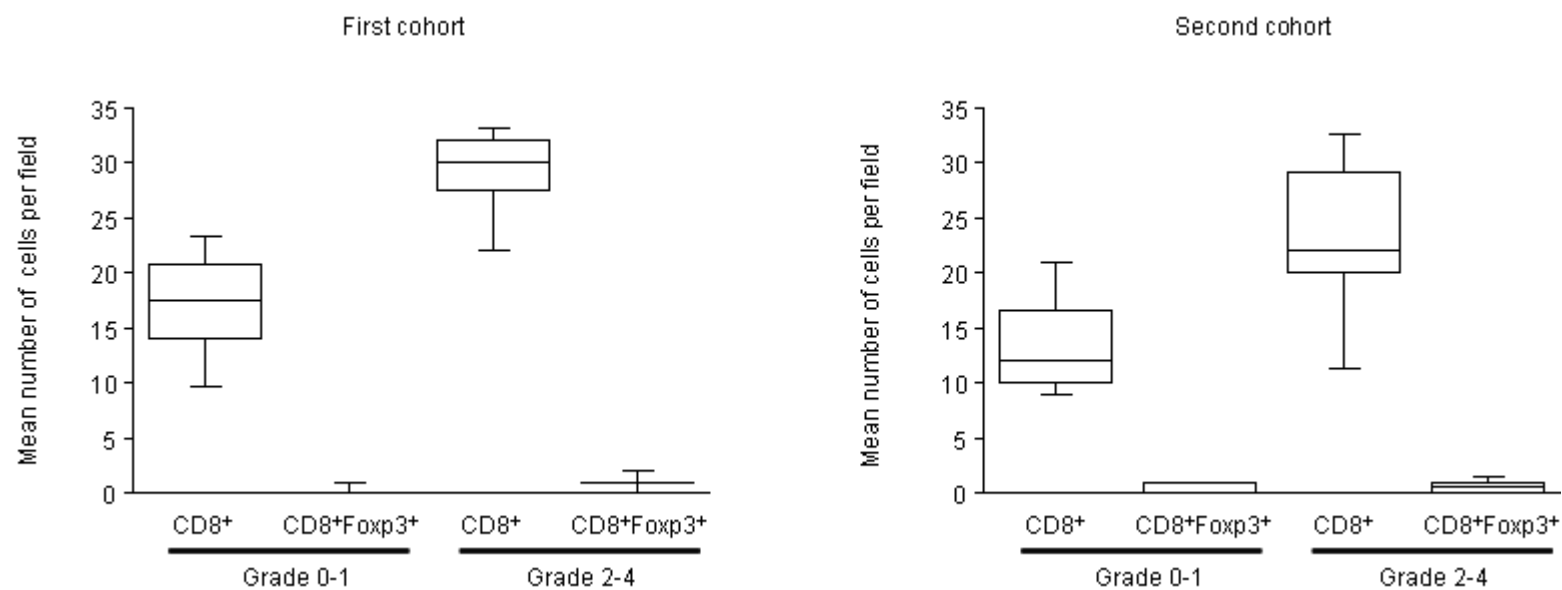


Figure 4

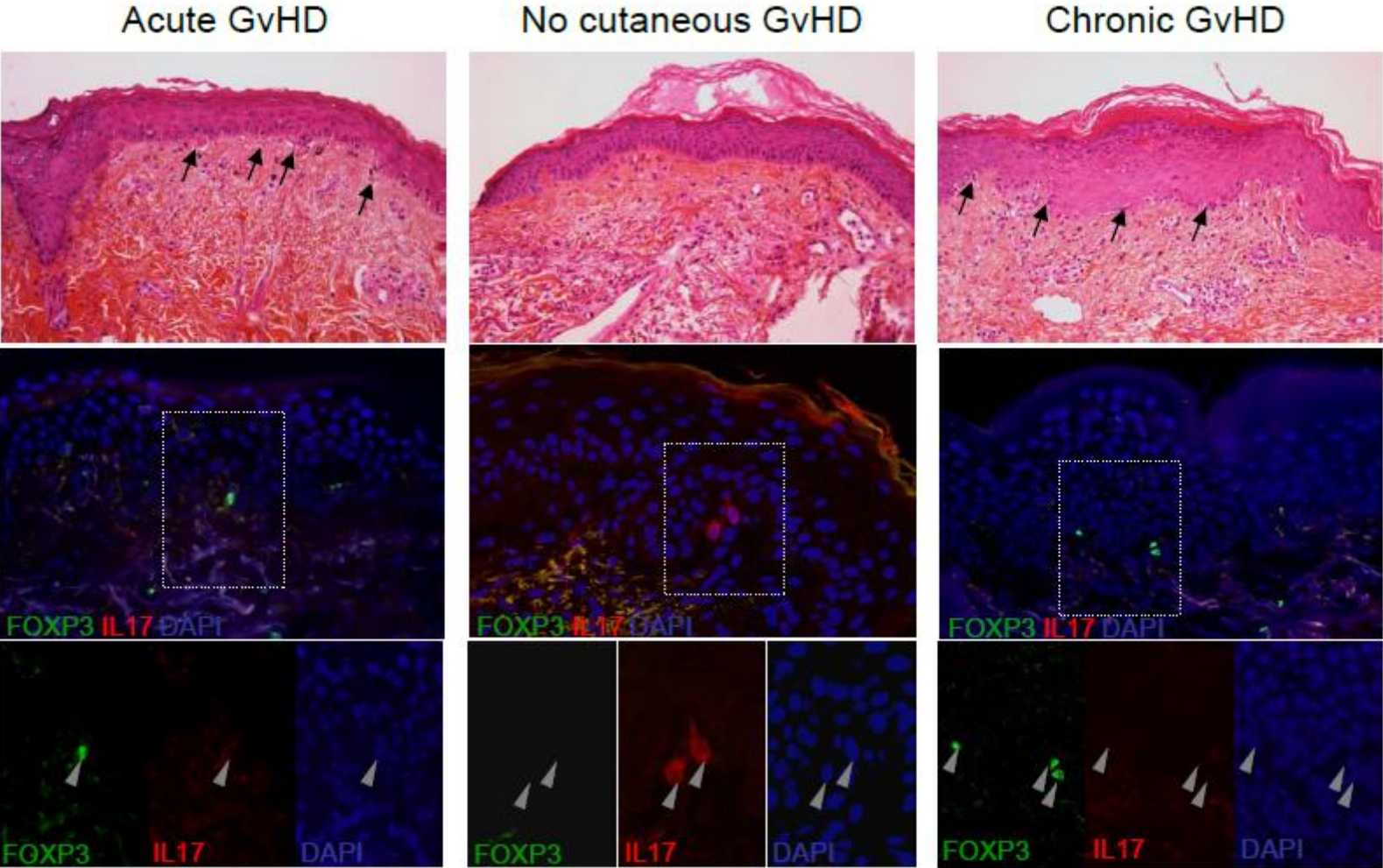


Figure 5a

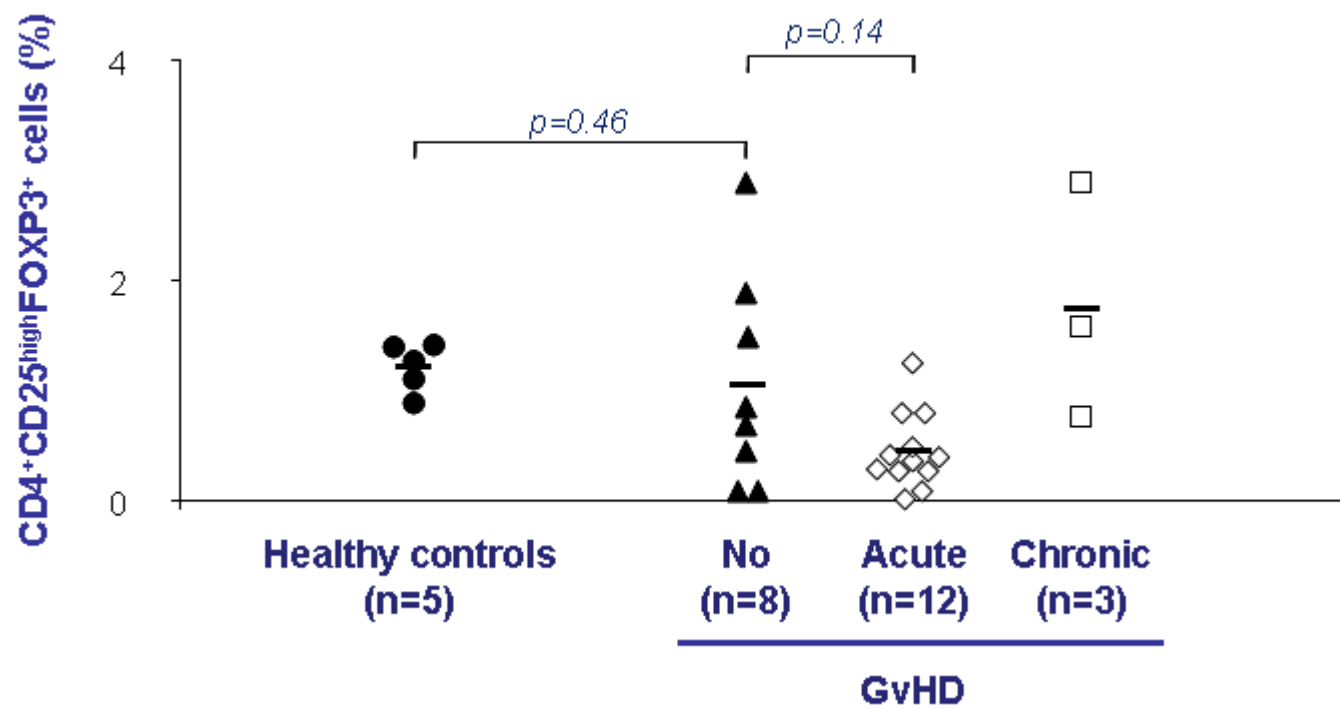




Figure 5b

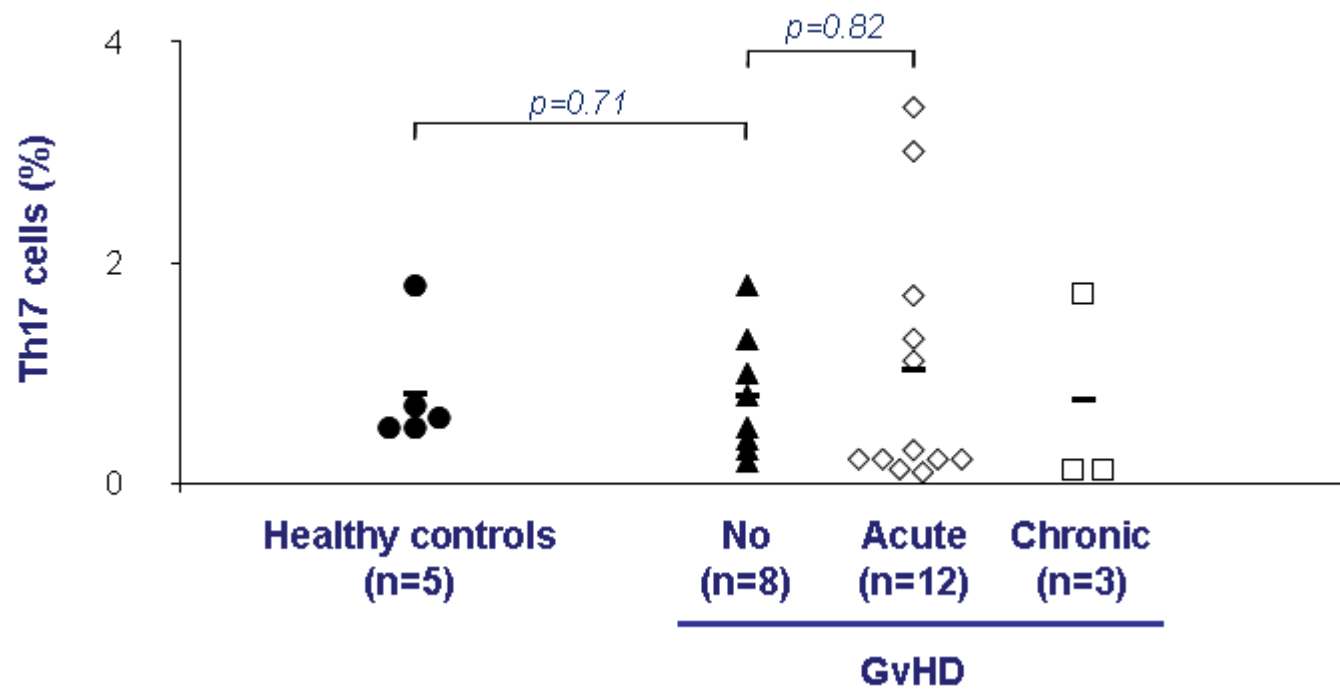


Figure 5c

