



HAL
open science

Clinical review: Practical recommendations on the management of perioperative heart failure in cardiac surgery.

Alexandre Mebazaa, Antonis A. Pitsis, Alain Rudiger, Wolfgang Toller, Dan Longrois, Sven-Erik Ricksten, Ilona Bobek, Stefan de Hert, Georg Wieselthaler, Uwe Schirmer, et al.

► **To cite this version:**

Alexandre Mebazaa, Antonis A. Pitsis, Alain Rudiger, Wolfgang Toller, Dan Longrois, et al.. Clinical review: Practical recommendations on the management of perioperative heart failure in cardiac surgery.. *Critical Care*, 2010, 14 (2), pp.201. 10.1186/cc8153 . inserm-00490416

HAL Id: inserm-00490416

<https://inserm.hal.science/inserm-00490416>

Submitted on 8 Jun 2010

HAL is a multi-disciplinary open access archive for the deposit and dissemination of scientific research documents, whether they are published or not. The documents may come from teaching and research institutions in France or abroad, or from public or private research centers.

L'archive ouverte pluridisciplinaire **HAL**, est destinée au dépôt et à la diffusion de documents scientifiques de niveau recherche, publiés ou non, émanant des établissements d'enseignement et de recherche français ou étrangers, des laboratoires publics ou privés.

REVIEW

Clinical review: Practical recommendations on the management of perioperative heart failure in cardiac surgery

Alexandre Mebazaa¹, Antonis A Pitsis², Alain Rudiger³, Wolfgang Toller⁴, Dan Longrois⁵, Sven-Erik Ricksten⁶, Ilona Bobek⁷, Stefan De Hert⁸, Georg Wieselthaler⁹, Uwe Schirmer¹⁰, Ludwig K von Segesser¹¹, Michael Sander¹², Don Poldermans¹³, Marco Ranucci¹⁴, Peter CJ Karpati¹⁵, Patrick Wouters¹⁶, Manfred Seeberger¹⁷, Edith R Schmid¹⁸, Walter Weder¹⁹ and Ferenc Follath²⁰

Abstract

Acute cardiovascular dysfunction occurs perioperatively in more than 20% of cardiosurgical patients, yet current acute heart failure (HF) classification is not applicable to this period. Indicators of major perioperative risk include unstable coronary syndromes, decompensated HF, significant arrhythmias and valvular disease. Clinical risk factors include history of heart disease, compensated HF, cerebrovascular disease, presence of diabetes mellitus, renal insufficiency and high-risk surgery. EuroSCORE reliably predicts perioperative cardiovascular alteration in patients aged less than 80 years. Preoperative B-type natriuretic peptide level is an additional risk stratification factor. Aggressively preserving heart function during cardiosurgery is a major goal. Volatile anaesthetics and levosimendan seem to be promising cardioprotective agents, but large trials are still needed to assess the best cardioprotective agent(s) and optimal protocol(s). The aim of monitoring is early detection and assessment of mechanisms of perioperative cardiovascular dysfunction. Ideally, volume status should be assessed by 'dynamic' measurement of haemodynamic parameters. Assess heart function first by echocardiography, then using a pulmonary artery catheter (especially in right heart dysfunction). If volaemia and heart function are in the normal range, cardiovascular dysfunction is very likely related to vascular dysfunction. In treating myocardial dysfunction, consider the following options, either alone or in combination: low-to-moderate doses of dobutamine and epinephrine, milrinone or levosimendan. In vasoplegia-induced hypotension, use norepinephrine to maintain adequate perfusion pressure. Exclude hypovolaemia in patients under vasopressors, through repeated volume assessments. Optimal perioperative use of inotropes/vasopressors in cardiosurgery remains controversial, and further large multinational studies are needed. Cardiosurgical perioperative classification of cardiac impairment should be based on time of occurrence (precardiotomy, failure to wean, postcardiotomy) and haemodynamic severity of the patient's condition (crash and burn, deteriorating fast, stable but inotrope dependent). In heart dysfunction with suspected coronary hypoperfusion, an intra-aortic balloon pump is highly recommended. A ventricular assist device should be considered before end organ dysfunction becomes evident. Extra-corporeal membrane oxygenation is an elegant solution as a bridge to recovery and/or decision making. This paper offers practical recommendations for management of perioperative HF in cardiosurgery based on European experts' opinion. It also emphasizes the need for large surveys and studies to assess the optimal way to manage perioperative HF in cardiac surgery.

Introduction and epidemiology

Group recommendations

- More than 20% of patients are expected to have acute cardiovascular dysfunction in the perioperative period of cardiac surgery

- Classification of acute heart failure by European Society of Cardiology/American College of Cardiology Foundation/American Heart Association is not applicable to the perioperative period of cardiac surgery
Acute heart failure (HF) is defined as a rapid onset of symptoms secondary to abnormal cardiac function resulting in an inability to pump sufficient blood at normal end-diastolic pressures. Acute HF presents clinically as cardiogenic shock, pulmonary oedema, or left/right/biventricular congestive HE, sometimes in conjunction with high blood pressure (hypertensive HF)

*Correspondence: alexandre.mebazaa@lrb.aphp.fr

¹Department of Anaesthesia and Intensive care, INSERM UMR 942, Lariboisière Hospital, University of Paris 7 - Diderot, 2 rue Ambroise Paré, 75010 Paris, France
Full list of author information is available at the end of the article

or high cardiac output (CO) [1]. Epidemiological studies have revealed the high morbidity and mortality of hospitalised acute HF patients [2-4], and the European Heart Failure Survey II (EHFS II) [5] and the EFICA study (Epidémiologie Française de l'Insuffisance Cardiaque Aiguë) [6] have provided insights into the epidemiology of those admitted to ICUs. Differentiating between these scenarios perioperatively might be more complex than in non-cardiosurgical settings [7-9], as typical symptoms are often missing, while measured physiologic parameters are influenced by treatment. Additionally, frequently occurring cardiac stunning - a transient, reversible, post-operative contractility impairment - may require inotropic support to prevent tissue hypoperfusion and organ dysfunction.

In a recent prospective survey, the presentation and epidemiology of acute HF were compared in a medical and a cardiosurgical ICU [10]. The clinical course varied considerably in the three specified patient subgroups (medical, elective and emergency cardiosurgical patients), with outcome mostly influenced by co-morbidities, organ dysfunction, and surgical treatment options. The distinction between cardiogenic shock and transient postoperative cardiac stunning - diagnosed in 45% of elective patients - is important as they are associated with different hospital paths and outcomes (Figure 1). Patients with only postoperative stunning can usually be rapidly weaned off inotropic support.

In another study, postcardiotomy cardiogenic shock occurred in only 2% to 6% of all adult cardiosurgical procedures, albeit associated with high mortality rates [11]. Twenty-five percent of patients undergoing elective coronary artery bypass graft (CABG) surgery require inotropic support for postoperative myocardial dysfunction [12]. Transesophageal echocardiography (TEE) shows that right ventricular (RV) dysfunction is present in about 40% of postoperative patients who develop shock [13]. Postoperative cardiovascular dysfunction may also be characterised by unexpectedly low systemic vascular resistance (SVR), that is, vasodilatory shock. These findings could help in the evaluation of therapeutic options [14,15].

Risk stratification

Group recommendations

- Indicators of major clinical risk in the perioperative period are: unstable coronary syndromes, decompensated HF, significant arrhythmias and severe valvular disease
- Clinical risk factors include history of heart disease, compensated HF, cerebrovascular disease, presence of diabetes mellitus, renal insufficiency and high-risk surgery

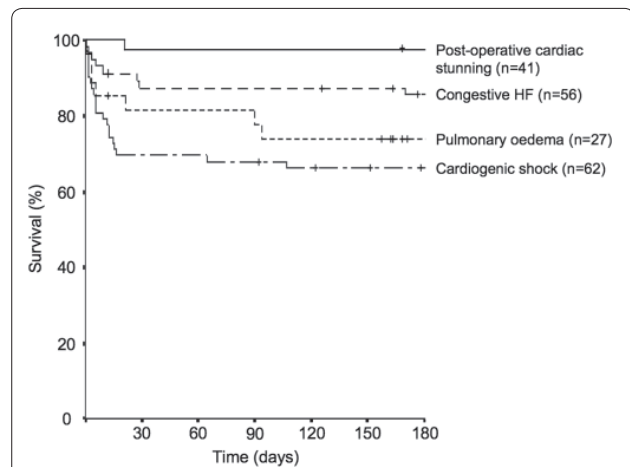


Figure 1. Kaplan Meier curves showing survival rates of ICU patients with different acute heart failure (HF) syndromes over time, starting at the day of ICU admission. The small vertical lines indicate the time points when patients had their last follow-up. The survival curves between the groups are significantly different (log rank $P < 0.001$). Data were derived from [10].

- the EuroSCORE predicts perioperative cardiovascular alteration in cardiac surgery well, although in those older than 80 years it overestimates mortality
- B-type natriuretic peptide level before surgery is an additional risk stratification factor

Risk stratification is increasingly used in open-heart surgery to help adjust available resources to predicted outcome. The latter is mostly calculated by the EuroSCORE (European System for Cardiac Operative Risk Evaluation; Table 1) [16].

As the simple EuroSCORE sometimes underestimates risk when certain combinations of risk factors co-exist, a more complete logistical version has been developed, resulting in more accurate risk prediction for particularly high risk patients. Figure 2 depicts the predicted factors of postoperative low CO syndrome (abscissa) versus the logit score (ordinate) for several combinations of covariate risk factors for low CO syndrome [17].

Table 2 lists other scoring systems besides the EuroSCORE used to assess risk in cardiac surgery. Essentially, according to all risk indices HF constitutes a high risk, and a left ventricular ejection fraction $\leq 35\%$ could be an indicator of adverse outcome [18]. Compared to other risk factors, HF is especially related to poor long-term outcome. Preoperative assessment opens up a 'golden hour' for identification and initiation of therapeutic interventions in patients with myocardial viability, such as coronary revascularization, cardiac resynchronization, and medical therapy. Due to therapeutic advances, the EuroSCORE slightly overestimates the perioperative risk, which is why a project to update the sensitivity of the EuroSCORE is currently being considered [19-24].

Table 1. EuroSCORE: risk factors, definitions and scores [16]

	Definition	Score
Patient-related factors		
Age	Per 5 years or part thereof over 60 years	1
Sex	Female	1
Chronic pulmonary disease	Long-term use of bronchodilators or steroids for lung disease	1
Extracardiac arteriopathy	Any one or more of the following: claudication, carotid occlusion or >50% stenosis, previous or planned intervention on the abdominal aorta, limb arteries or carotids	2
Neurological dysfunction	Disease severely affecting ambulation or day-to-day functioning	2
Previous cardiac surgery	Requiring opening of the pericardium	3
Serum creatinine	>200 µmol/l preoperatively	2
Active endocarditis	Patient still under antibiotic treatment for endocarditis at the time of surgery	3
Critical preoperative state	Any one or more of the following: ventricular tachycardia or fibrillation or aborted sudden death, preoperative cardiac massage, preoperative ventilation before arrival in the anaesthetic room, preoperative inotropic support, intraaortic balloon counterpulsation or preoperative acute renal failure (anuria or oliguria <10 ml/h)	3
Cardiac-related factors		
Unstable angina	Rest angina requiring intravenous nitrates until arrival in the anaesthetic room	2
LV dysfunction	Moderate or LVEF 30 to 50%	1
	Poor or LVEF <30	3
Recent myocardial infarct	<90 days	2
Pulmonary hypertension	Systolic PAP >60 mmHg	2
Operation-related factors		
Emergency	Carried out on referral before the beginning of the next working day	2
Other than isolated CABG	Major cardiac procedure other than or in addition to CABG	2
Surgery on thoracic aorta	For disorder of ascending, arch or descending aorta	3
Postinfarct septal rupture		4

Application of scoring system: 0-2 (low risk); 3-5 (medium risk); 6 plus (high risk). CABG, coronary artery bypass graft; LV, left ventricular; LVEF, left ventricular ejection fraction; PAP, pulmonary arterial pressure.

In addition to scoring systems, levels at hospital admission of B-type natriuretic peptide (BNP) and the amino-terminal fragment of pro-BNP (NT-pro-BNP) are powerful predictors of outcome with regard to in-hospital mortality and re-hospitalization in HF patients [25,26]. In open-heart surgery patients, preoperative BNP levels >385 pg/ml were an independent predictor of postoperative intra-aortic balloon pump (IABP) use, hospital length of stay, and 1-year mortality [27]. In patients undergoing aortic valve replacement, BNP levels >312 pg/ml were an independent predictor of death [28]. Similarly, NT-pro-BNP was shown to be equivalent to the EuroSCORE and more accurate than preoperative left ventricular ejection fraction in predicting postoperative complications [29].

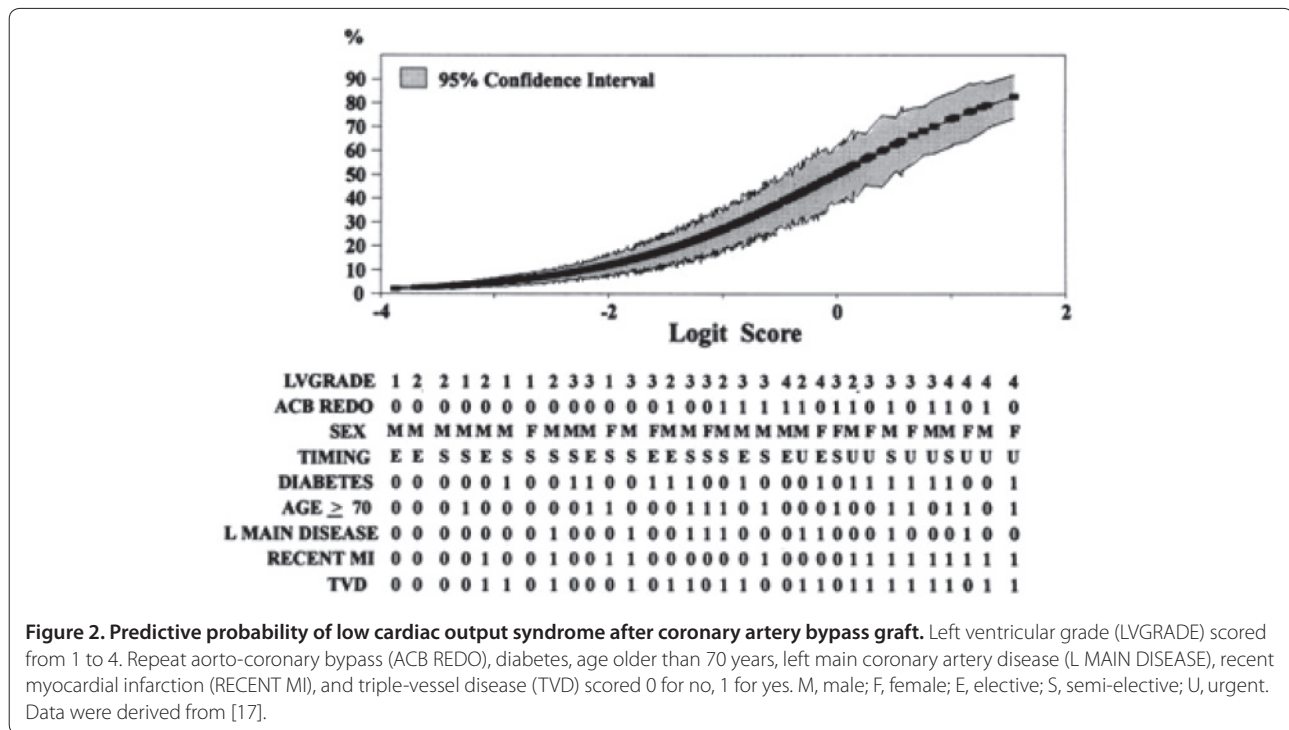
Risk modulation: cardioprotective agents

Group recommendations

- Aggressively preserving heart function during cardiac surgery is a major goal

- Volatile anaesthetics seem to be promising cardioprotective agents
 - Levosimendan, introduced more recently, also seems to have cardioprotective properties
 - Large trials are still needed to assess the best cardioprotective agent(s) and the optimal protocol to adopt
- Besides cardioplegic and coronary perfusion optimisation techniques, cardioprotective agents aim to prevent or diminish the extent of perioperative ischaemia-reperfusion-induced myocardial dysfunction. The mechanisms leading to myocardial injury seem to be free radical formation, calcium overload, and impairment of the coronary vasculature [30].

The ultimate goal of perioperative cardioprotective strategies is to limit the extent and consequences of myocardial ischaemia-reperfusion injury. Protective strategies include preserving and replenishing myocardial high energy phosphate stores, modulating intracellular gradients, and the use of free radical oxygen scavengers and/or antioxidants, and inhibitors of the complement



systems and neutrophil activation. Most of these approaches (using adenosine modulators, cardioplegia solution adjuvants, Na⁺/H⁺ exchange inhibitors, K_{ATP} channel openers, anti-apoptotic agents, and many other drugs with proven or anticipated effects on the complement-inflammation pathways) have been shown to be effective in experimental and even observational clinical settings.

Clinical studies of volatile anaesthetics, which exhibit pharmacological preconditioning effects, have failed to demonstrate unequivocally beneficial effects with regard to the extent of postischaemic myocardial function and damage [31]. The use of a volatile versus intravenous anaesthetic regimen might be associated with better preserved myocardial function with less evidence of myocardial damage [32-35]. The protective effects seemed most pronounced when the volatile anaesthetic was applied throughout the entire surgical procedure [36]. Desflurane and sevoflurane have cardioprotective effects that result in decreased morbidity and mortality compared to an intravenous anaesthetic regimen [37].

Postoperative morbidity and clinical recovery remains to be established. In a retrospective study, cardiac-related mortality seemed to be lower with a volatile anaesthetic regimen, but non-cardiac death seemed to be higher in this patient population, with no difference in 30-day total mortality [38].

Levosimendan is increasingly described as a myocardial protective agent. Its anti-ischaemic effects are mediated by the opening of ATP-sensitive potassium channels [39].

Levosimendan improves cardiac performance in myocardial stunning after percutaneous intervention [40]. The latest meta-analysis, including 139 patients from 5 randomized controlled studies, showed that levosimendan reduces postoperative cardiac troponin release irrespective of cardiopulmonary bypass (CPB; Figure 3). [41] Tritapepe and colleagues [12] showed that levosimendan pre-treatment improved outcome in 106 patients undergoing CABG. A single dose of levosimendan (24 µg/kg over 10 minutes) administered before CPB reduced time to tracheal extubation, overall ICU length of stay and postoperative troponin I concentrations. In another recent study, levosimendan before CPB lowered the incidence of postoperative atrial fibrillation [42]. Due to the complex effects of levosimendan, and such preclinical and clinical results, the term inoprotector has been proposed to describe it [43].

Monitoring

Group recommendations

- The aim of monitoring is the early detection of peri-operative cardiovascular dysfunction and assessment of the mechanism(s) leading to it
- Volume status is ideally assessed by 'dynamic' measures of haemodynamic parameters before and after volume challenge rather than single 'static' measures
- Heart function is first assessed by echocardiography followed by pulmonary arterial pressure, especially in the case of right heart dysfunction

Table 2. Scoring systems used in cardiac surgery

	EF with highest risk	Incidence in high-risk group*	Mortality in high-risk group	Reference
EuroSCORE	<30%	3 of all, ≥6	10.25 to 12.16%	[16]
Pons Score	- (NYHA IV)	10 of all, ≥30	54.4%	[85]
French Score	≤30%	5 of all, >6	21.2%	[86]
Ontario Province Risk Score	<20%	3 of all, ≥8	14.51%	[87]
Cleveland Clinic Score	<35%	3 of all, 10 to 31	44.6%	[88]
Parsonnet Score	<30%	4 of all, ≥20	>20%	[89]

EF, ejection fraction; NYHA, New York Heart Association.

- If both volaemia and heart function are in the normal range, cardiovascular dysfunction is very likely related to vascular dysfunction

Assessing optimal volume status

Heart failure cannot be ascertained unless volume loading is optimal. The evaluation of effective circulating blood volume is more important than the total blood volume. Signs of increased sympathetic tone and/or organ hypoperfusion (increased serum lactate and decreased mixed venous saturation (SvO₂) or central venous O₂ saturation (ScvO₂)) indicate increased oxygen extraction secondary to altered cardiovascular physiology/hypovolaemia.

It is difficult to estimate volume status using single haemodynamic measures. Pressure estimates, such as central venous pressure and pulmonary capillary wedge pressure (PCWP) - previously considered reliable measures of RV and LV preload - are generally insensitive indicators of volaemia; while low values may reflect hypovolaemia, high values do not necessarily indicate volume overload [44-47]. The uncoupling between PCWP and LV end-diastolic pressure can be the consequence of elevated pulmonary vascular resistance, pulmonary venoconstriction, mitral stenosis and reductions in transmural cardiac compliance.

Volumetric estimates of preload seem more predictive of volume status [46]. Transoesophageal echocardiography is used clinically for assessing LV end-diastolic area, while the transpulmonary thermal-dye indicator dilution technique measures intrathoracic blood volume [48], which reflects both changes in volume status and ensuing alteration in CO, a potentially useful clinical indicator of overall cardiac preload [49,50].

In predicting fluid responsiveness in ICU patients, it is preferable to use more reliable dynamic indicators reflecting hypovolaemia than static parameters [51,52]. In particular, stroke volume variation enables real-time prediction and monitoring of LV response to preload enhancement postoperatively and guides volume therapy. By contrast, central venous pressure and PCWP

alterations associated with changes in circulating volumes do not correlate significantly with changes in end-diastolic volume and stroke volume. The 'gold standard' haemodynamic technique guiding volume management in critically ill patients is yet to be determined. Continuous monitoring techniques are more appropriate in assessing the perioperative volume status of HF patients.

Echocardiography

Intraoperative and postoperative transoesophageal echocardiography (TOE) and postoperative transthoracic echocardiography enable bedside visualization of the heart. Echocardiography may immediately identify causes of cardiovascular failure, including cardiac and valvular dysfunction, obstruction of the RV (pulmonary embolism) or LV outflow tract (for example, systolic anterior motion of the anterior mitral valve leaflet), or obstruction to cardiac filling in tamponade. It might differentiate between acute right, left and global HF as well as between systolic and diastolic dysfunction. Transoesophageal echocardiography influences both anaesthetists' and surgeons' therapeutic options, especially perioperatively [53].

Pulmonary artery catheter (Swan-Ganz catheter)

After almost four decades, the pulmonary artery catheter (PAC) remains a monitoring method for directly measuring circulatory blood flow in critically ill patients, including cardiosurgical patients. With regard to managing perioperative HF, the four crucial components remain measurements of heart rate, volaemia, myocardial function and vessel tone.

In RV failure, except if caused by tamponade, a PAC should be introduced after an echocardiographically established diagnosis. PACs can differentiate between pulmonary hypertension and RV ischaemia, necessitating a reduction of RV afterload, as the ischaemic RV is very sensitive to any afterload increase [54]. They are even more important in the worst scenario for the RV: combined increased pulmonary arterial pressure and RV ischaemia.

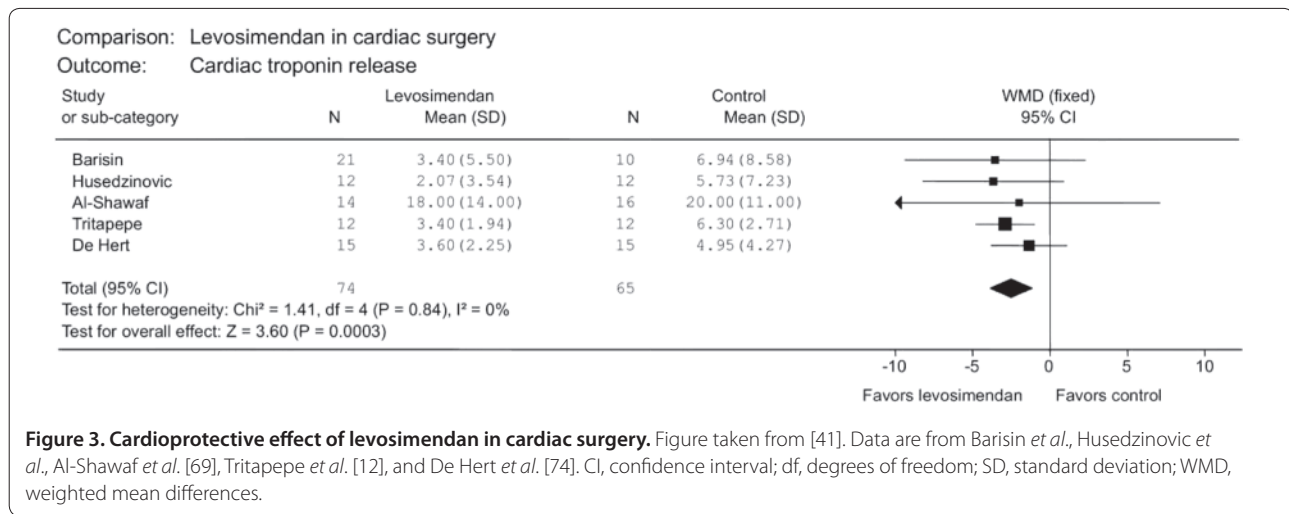


Figure 3. Cardioprotective effect of levosimendan in cardiac surgery. Figure taken from [41]. Data are from Barisin *et al.*, Husedzinovic *et al.*, Al-Shawaf *et al.* [69], Tritapepe *et al.* [12], and De Hert *et al.* [74]. CI, confidence interval; df, degrees of freedom; SD, standard deviation; WMD, weighted mean differences.

Alternative measures of stroke volume

Recently, several devices have been designed to assess cardiac function based on pulse contour analysis of an arterial waveform (Table 3). Their value in assessing the failing heart's function is still under investigation.

Pharmacological treatment of left ventricular dysfunction after cardiac surgery

Group recommendations

- In case of myocardial dysfunction, consider the following three options either alone or combined:
- Among catecholamines, consider low-to-moderate doses of dobutamine and epinephrine: they both improve stroke volume and increase heart rate while PCWP is moderately decreased; catecholamines increase myocardial oxygen consumption
- Milrinone decreases PCWP and SVR while increasing stroke volume; milrinone causes less tachycardia than dobutamine
- Levosimendan, a calcium sensitizer, increases stroke volume and heart rate and decreases SVR
- Norepinephrine should be used in case of low blood pressure due to vasoplegia to maintain an adequate perfusion pressure. Volaemia should be repeatedly assessed to ensure that the patient is not hypovolaemic while under vasopressors
- Optimal use of inotropes or vasopressors in the perioperative period of cardiac surgery is still controversial and needs further large multinational studies

Cardiac surgery may cause acute deterioration of ventricular function during and after weaning from CPB. Pharmacological treatment of low CO and reduced oxygen delivery to vital organs may be required. Inadequate treatment may lead to multiple organ failure, one of the main causes of prolonged hospital stay,

postoperative morbidity and mortality and, thus, increased health care costs. However, excess inotrope usage could also be associated with deleterious effects through complex mechanisms [55].

A wide range of inotropic agents is available. Consensus regarding the pharmacological inotropic treatment for postcardiotomy heart failure and randomized controlled trials focusing on clinically important outcomes are both lacking. The vast majority of reports focus on postoperative systemic haemodynamic effects and, to some extent, on regional circulatory effects of individual inotropic agents. Furthermore, there is a shortage of comparative studies evaluating the differential systemic and regional haemodynamic effects of various inotropes on CO in postoperative HF. Catecholamines and phosphodiesterase inhibitors are two main groups of inotropes used for treatment of cardiac failure in heart surgery [56]. The calcium sensitizer levosimendan has recently become an interesting option for treatment of HF as well as in postcardiotomy ventricular dysfunction.

Catecholamines

All catecholamines have positive inotropic and chronotropic effects. In a comparison of epinephrine with dobutamine in patients recovering from CABG, they had similar effects on mean arterial pressure, central venous pressure, PCWP, SVR, pulmonary vascular resistance, and LV stroke work [57]. Furthermore, when stroke volume was increased comparably, dobutamine increased heart rate more than epinephrine. Epinephrine, dobutamine and dopamine all increase myocardial oxygen consumption (MVO_2) postoperatively [58-60]. However, only with dobutamine is this matched by a proportional increase in coronary blood flow [58,59], suggesting that the other agents may impair coronary vasodilatory reserve postoperatively. Of note, commonly encountered

Table 3. Etiology and investigation of post-cardiopulmonary bypass ventricular dysfunction

Cause	Investigation	Finding
General		
Exacerbation of preoperative ventricular dysfunction with relative intolerance to cardioplegic asystolic, hypoxic arrest	TOE	Global or regional wall motion abnormality
Reperfusion injury	TOE	Global wall motion abnormality
Inadequate myocardial protection (underlying coronary anatomy, route of cardioplegia, type of cardioplegia)	TOE	Global wall motion abnormality
Case/patient specific		
Ischaemia/infarction		
Vessel spasm (native coronaries, internal mammary artery)	ECG, TOE, graft flow	ECG changes, regional wall motion abnormality, poor graft flow
Emboli (air, clot, particulate matter)	ECG, TOE, graft flow	ECG changes, regional wall motion abnormality, poor graft flow
Technical graft anastomotic tissues	ECG, TOE, graft flow	ECG changes, regional wall motion abnormality, poor graft flow
Kink/clotting of bypass grafts, native vessels	ECG, TOE, graft flow, inspection	ECG changes, regional wall motion abnormality, poor graft flow
Incomplete revascularization		
Non-graftable vessels		
Known intrinsic disease		
Metabolic		
Hypoxia, hypercarbia	ABG, electrolytes, check ventilation	
Hypokalemia, hyperkalemia	Electrolytes	
Uncorrected pathology		
Hypertrophic cardiomyopathy	TOE	Abnormal outflow gradient, SAM
Valve gradients	TOE	Abnormal valve gradient
Shunts	TOE	Abnormal Doppler jet
Mechanical issues		
Prosthetic valve function	TOE	Poor leaflet motion, abnormal gradient
Intracardiac shunt (ASD, VSD)	TOE	Abnormal Doppler jet
Conduction issues		
Bradycardia	ECG	Heart rate less than 60
Atrioventricular dissociation	ECG	Third degree heart block
Atrial fibrillation	ECG, ABG, electrolytes	Hypoxia, electrolyte abnormality
Ventricular arrhythmias	ECG, ABG, electrolytes	Hypoxia, electrolyte abnormality
Vasodilation	Transpulmonary thermodilation, Swan-Ganz monitoring	Decreased systemic vascular resistance
Hypovolemia	Stroke volume monitoring	Decreased stroke volume, increased SVV
Pulmonary hypertension		
Pre-existing elevated pulmonary pressures, hypoxia, hypercarbia, fluid overload	ABG	Elevated pulmonary artery pressures, hypoxia, hypercarbia, RV distention
Right ventricular failure		
Elevated pulmonary pressures, inadequate myocardial protection, emboli to native or bypass circulation, fluid overload	Swan-Ganz monitoring, ABG, TOE	RV distention, poor RV wall motion, elevated pulmonary artery pressure, elevated central venous pressure

ABG = arterial blood gas; ASD, atrial septic defect; ECG, electrocardiogram, RV, right ventricle, SAM, systolic anterior motion of mitral valve leaflet; SVV, stoke volume variation; TOE, transoesophageal echocardiography; VSD, ventricular septal defect. Data taken from [80].

phenomena associated with epinephrine use include hyperlactataemia and hyperglycaemia. Dopexamine has no haemodynamic advantage over dopamine or dobutamine [61,62] in LV dysfunction.

Phosphodiesterase III inhibitors

Phosphodiesterase III inhibitors, such as amrinone, milrinone or enoximone, are all potent vasodilators that cause reductions in cardiac filling pressures, pulmonary vascular resistance and SVR [63-65]; they are commonly used in combination with β_1 -adrenergic agonists. Compared to dobutamine in postoperative low CO, phosphodiesterase III inhibitors caused a less pronounced increase in heart rate and decreased the likelihood of arrhythmias [66-68]; also, the incidence of postoperative myocardial infarction was significantly lower (0%) with amrinone compared to dobutamine (40%) [66]. This could be explained by phosphodiesterase III inhibitors decreasing LV wall tension without increasing MVO_2 , despite increases in heart rate and contractility, in striking contrast to catecholamines [59].

Levosimendan

Levosimendan has been recommended for the treatment of acute HF [8] and was recently used for the successful treatment of low CO after cardiac surgery [69-71]. The effects of levosimendan have been compared to those of dobutamine [72,73] and milrinone [69,74]. Levosimendan has been shown to decrease the time to extubation compared to milrinone [74]. Compared to dobutamine, levosimendan decreases the incidence of postoperative atrial fibrillation [42] and myocardial infarction, ICU length of stay [73], acute renal dysfunction, ventricular arrhythmias, and mortality in the treatment of postoperative LV dysfunction. Levosimendan showed little change in MVO_2 [75] and improved early heart relaxation after aortic valve replacement. [76].

In summary, the above described inotropic agents can be started either alone or in combination with an agent from another class (multimodal approach) in myocardial depression. Common examples include norepinephrine with dobutamine or phosphodiesterase III inhibitors, and dobutamine with levosimendan. The beneficial effects of treatment with inotropic agents on outcome in the management of postoperative low CO need to be confirmed in a large multicentre study.

Clinical scenarios

Group recommendations

- The classification of cardiac impairment in the perioperative period of cardiac surgery should be based on the time of occurrence:
 - precardiomy

- failure to wean
 - postcardiotomy
- and on the haemodynamic severity of the condition of the patient:
- crash and burn
 - deteriorating fast
 - stable but inotrope dependent

In cardiosurgical patients the timing of surgical intervention in relationship to the development of acute HF with subsequent cardiogenic shock is of utmost importance, leading to three distinct clinical scenarios: precardiomy HF, failure to wean and postcardiotomy HF. While their names are self-explanatory, these three distinct clinical scenarios differ from each other substantially concerning diagnosis, monitoring and management.

There is consensus that cardiogenic shock is the severest form of HF; regardless of aetiology, pathophysiology, or initial clinical presentation, it can be the final stage of both acute and chronic HF, with the highest mortality (Table 4).

Precardiomy heart failure

In the precardiomy HF profile the underlying pathology may still be obscure. Altered LV function primarily due to myocardial ischaemia is one of the most frequent causes of precardiomy low output syndrome. The patient may be anywhere in the hospital or pre-hospital setting, with or without an initial working diagnosis, and quite often only basic monitoring options are available. The availability of life support measures may be limited compared with the other two scenarios. The primary aim being the patient's survival, priorities focus on deciding the steps necessary for diagnosis and treatment. The next priority should be surgery avoiding further alterations in myocardial function, possibly by introducing an IABP preoperatively. As described above, preoperative poor LV function is the most important predictor of postoperative morbidity and mortality after CABG. However, the dysfunctional myocardium may not be irreversibly damaged and possibly only 'stunned' or 'hibernating'. Revascularization of the reversibly injured heart areas may result in improved LV performance. Still cold injury or inhomogeneous cardioplegic delivery may exacerbate perioperative ischaemic injury, resulting in inadequate early postoperative ventricular function [77]. Prolonged reperfusion with a terminal 'hot shot' of cardioplegic solution may restore function in patients with poor ventricular function [78]. Warm cardioplegia may improve postoperative LV function in patients with high-risk conditions [77]. Some patients will continue to have poor ventricular function postoperatively, restricting the role of myocardial protection to limiting the extent of perioperative injury [79].

Table 4. The three clinical heart failure scenarios and the clinical profiles in each scenario

Clinical scenarios	Clinical profiles in each scenario
Precardiomy heart failure	
Precardiomy crash and burn	Refractory cardiogenic shock requiring emergent salvage operation: CPR <i>en route</i> to the operating theatre or prior to anaesthesia induction Refractory cardiogenic shock (STS definition SBP <80 mmHg and/or CI <1.8 L/minute/m ² despite maximal treatment) requiring emergency operation due to ongoing, refractory (difficult, complicated, and/or unmanageable) unrelenting cardiac compromise resulting in life threatening haemodynamic compromise
Precardiomy deteriorating fast	Deteriorating haemodynamic instability: increasing doses of intravenous inotropes and/or IABP necessary to maintain SBP > 80mmHg and/or CI >1.8 L/minute/m ² . Progressive deterioration. Emergency operation required due to ongoing, refractory (difficult, complicated, and/or unmanageable) unrelenting cardiac compromise, resulting in severe haemodynamic compromise
Precardiomy stable on inotropes	Inotrope dependency: intravenous inotropes and/or IABP are necessary to maintain SBP >80 mmHg and/or CI >1.8 L/minute/m ² without clinical improvement. Failure to wean from inotropes (decreasing inotropes results in symptomatic hypotension or organ dysfunction). Urgent operation is required
Failure to wean from CPB	
Failure to wean from CPB	Cardiac arrest after prolonged weaning time (>1 hour)
Deteriorating fast on withdrawal from CPB	Deteriorating haemodynamic instability on withdrawal of CBP after prolonged weaning time (>1 hour) Increasing doses of intravenous inotropes and/or IABP necessary to maintain SBP >80 mmHg and/or CI >1.8 L/minute/m ²
Stable but inotrope dependent on withdrawal from CPB	Inotrope dependency on withdrawal of CBP after weaning time >30 minutes. Intravenous inotropes and/or IABP are necessary to maintain SBP >80 mmHg and/or CI >1.8 L/minute/m ² without clinical improvement The high incidence of complications after VAD implantation is directly related to prolonged attempted weaning periods from CPB. Application of IABP within 30 minutes from the first attempt to wean from CPB and mechanical circulatory support within 1 hour from the first attempts to wean from the CPB are suggested [90]
Postcardiotomy cardiogenic shock	
Postcardiotomy crash and burn	Cardiac arrest requiring CPR until intervention Refractory cardiogenic shock (SBP <80 mmHg and/or CI <1.8 L/minute/m ² , critical organ hypoperfusion with systemic acidosis and/or increasing lactate levels despite maximal treatment, including inotropes and IABP) resulting in life threatening haemodynamic compromise. Emergency salvage intervention required
Postcardiotomy deteriorating fast	Deteriorating haemodynamic instability. Increasing doses of intravenous inotropes and/or IABP necessary to maintain SBP >80 mmHg and/or CI >1.8 L/minute/m ² . Progressive deterioration, worsening acidosis and increasing lactate levels. Emergent intervention required due to ongoing, refractory unrelenting cardiac compromise, resulting in severe haemodynamic compromise
Postcardiotomy stable on inotropes	Inotrope dependency: intravenous inotropes and/or IABP necessary to maintain SBP >80 mmHg and/or CI >1.8 L/minute/m ² without clinical improvement. Failure to decrease inotropic support

CI, cardiac index; CPB, cardiopulmonary bypass; CPR, cardiopulmonary resuscitation; IABP, intra-aortic balloon pump; SBP, systolic blood pressure; STS, Society of Thoracic Surgeons; VAD, ventricular assist device.

Failure to wean

In the failure to wean from CPB profile, although the reason to perform surgery is more or less established, the basis for a successful therapeutic approach is establishing a correct diagnosis of cardiac failure as soon as possible. Acute HF associated with failure to wean patients off CPB may be surgery related, patient specific or both, as summarized in Table 3 [80]. Table 3 also lists the investigations necessary to ascertain the underlying cause of failure to wean from CPB.

Postcardiotomy heart failure

As patients with postcardiotomy HF are usually in the ICU, we can usually guesstimate the diagnosis. Sophisticated monitoring and diagnostic and therapeutic options are readily available should the need arise. Although the chest remains closed, it can be reopened quickly if needed, either in the ICU bed or in theatre following the patient's transfer back there. Support with cardiac assist devices can also be initiated, although not as promptly as in the failure to wean scenario. The

priority is preserving end organ function and bridging the patient to recovery.

The initial strategy for management of postcardiotomy cardiac dysfunction includes the optimization of both preload appropriate to LV function and rhythm and support with positive inotropic and/or vasopressor agents and IABP. This strategy will restore haemodynamics in most patients. Requirements for optimal LV function and preservation of RV coronary perfusion include careful assessment of right-left ventricular interactions, ventricular-aorta coupling and adequate mean arterial pressure. [81]

When in postcardiotomy HF an IABP becomes necessary, survival rates between 40% and 60% have been reported. In more severe cases of postcardiotomy HF, reported rates of hospital discharge have been disappointing (6% to 44%) even with the implementation of extracorporeal ventricular assist devices [82].

A perioperative clinical severity classification of severe acute HF is suggested in Table 4.

Mechanical circulatory support

Group recommendations

- In case of heart dysfunction with suspected coronary hypoperfusion, IABP is highly recommended
- Ventricular assist device should be considered early rather than later, before end organ dysfunction is evident
- Extra-corporeal membrane oxygenation is an elegant solution as a bridge to recovery or decision making

Intra-aortic balloon pump

IABP is the first choice device in intra- and perioperative cardiac dysfunction. Its advantages include easy insertion (Seldinger technique), the modest increase in CO and coronary perfusion, and four decades of refined technology and experience resulting in a low complication rate. The IABP's main mechanism of action is a reduction of afterload and increased diastolic coronary perfusion via electrocardiogram triggered counterpulsation. However, the newer generations of IABPs are driven by aorta flow detection, thereby overcoming limitations in patients with atrial fibrillation and other arrhythmias. IABP reduces heart work and myocardial oxygen consumption, favourably modifying the balance of oxygen demand/supply.

Consequently, it is an ideal application in postcardiotomy cardiac dysfunction, especially in suspected coronary hypoperfusion. IABP insertion should be considered as soon as evidence points to possible cardiac dysfunction, preferably intraoperatively to avoid the excessive need of inotropic support.

IABP is contraindicated for patients with severe aortic insufficiency, and advanced peripheral and aortic vascular disease.

Catheter based axial flow devices

Experiences with the first miniaturized 14 Fr catheter based axial flow pump, used in the early 1980s (Hemopump), provided flow rates in the range of 2.0 to 2.5 L/minute, but initial mechanical problems limited its clinical application in supporting the failing heart.

A new design (Impella pump) provides a more stable mechanical function through modifications and improvements, including both the pump-head and the miniaturized motor mounted on the tip of the catheter. However, even with these improvements transfemoral placement is only possible with the smallest version of this pump; larger diameter versions require surgical placement. Pump versions are available for both LV and RV support. Increased flow rates in the range of 2.5 to 5.0 L/minute can be achieved directly in proportion with increasing diameter of the pumps. It is CE-marked for temporary use of 5 to 10 days only, and seems efficient in medium flow demands in postcardiotomy low CO syndrome.

Extra-corporeal membrane oxygenation

Extra-corporeal membrane oxygenation (ECMO) is increasingly used for temporary mechanical circulatory support due to the relatively low cost of the system and disposables, as well as its broad availability (practically accessible to all cardiosurgical units, without requiring a major investment in hardware). Indications include all types of ventricular failure, for example, intraoperative or perioperative low CO syndrome, severe acute myocardial infarction, and cardiac resuscitation. An additional advantage is its versatile use not only in LV, RV or biventricular support, but also for respiratory assistance and even renal support by addition of a haemofilter.

ECMO is a simplified CPB using a centrifugal pump (5 to 6 L/minute), allowing for augmentation of venous drainage despite relatively small cannulas, with the option of taking the full workload over from the heart. ECMO is not only used as a bridge to recovery, a bridge to transplantation, or a bridge to assist with middle and long-term assist devices, but also as a bridge to decision making - for example, neurological assessment after resuscitation prior to long-term assist/transplantation.

The limitations of ECMO mainly stem from the necessity of permanent operator supervision and intervention. Currently, many different ECMO configurations are available for temporary use up to 30 days. Although patients supported by ECMO can be extubated, they are usually bed-ridden and have to stay in the ICU, which is very much in contrast to modern ventricular assist device therapy (see below).

Ventricular assist device

Mechanical blood pumps, capable of taking over the full CO of the failing heart, are used today as an established

therapy option for patients with end-stage HF. In the majority of cases only the failing LV needs mechanical support; pumps are therefore left ventricular assist devices. Patients with pronounced biventricular failure or patients in cardiogenic shock will nowadays receive biventricular mechanical support.

Besides achieving adequate perfusion of the peripheral organs, thereby facilitating survival in the ICU, increasingly the objective of modern ventricular assist device therapy is to obtain a level of functionality that results in an acceptable quality of life for the patient. Hence, weaning from the ventilator, mobilisation, transfer from the ICU to the general ward, excursions, discharge home, and ultimately return to work must be the goals when transplantation is not feasible within a reasonable time frame.

In terms of technology, the available pumps provide either pulsatile or continuous flow (may be modulated by residual ventricular function). In continuous flow, axial and centrifugal designs are distinguished. Almost all currently available second-generation rotary axial and centrifugal pumps require a transcutaneous drive line or cable, a serious limitation for the patient as well as a port of entry for infections. However, they can easily be miniaturized, produce no noise, have thin and flexible drive-lines and their driving units can be miniaturized to the size of a cigarette package. In third-generation rotary pumps the spinning rotor floats by means of either a magnetic field or hydrodynamic levitation, never touching the pump housing, thereby eliminating mechanical wear. The second and third generation pumps have prospective lifetimes of more than 10 years, producing an acceptable quality of life.

Steadily increasing implant numbers have improved clinical outcomes, with 1- and 2-year survival rates of approximately 90% and 80%, respectively [83,84].

In summary, in this day and age mechanical circulatory support should be considered as a course of treatment and not as a last effort in patients with failing hearts, especially those with perioperative cardiac dysfunction inadequately responding to advanced inotropic treatment. Initially, most patients demonstrating perioperative low CO syndrome receive short-term mechanical support. Under this initial support they stabilize or recover and can be weaned from the pump (bridge to recovery). Patients, whose cardiac function does not recover during the initial support and are eligible for cardiac transplantation can be switched to long-term mechanical support (bridge to transplantation, chronic mechanical support as an alternative to transplantation). If the haemodynamics are inadequate with an unclear indication for potentially long-term assist, ECMO provides an elegant low cost and short-term solution as a bridge to recovery. Table 5 summarizes short- and

Table 5. Mechanical circulatory support used in the three clinical heart failure scenarios

Clinical scenarios	Commonly used devices
Precardiotomy HF	IABP
	Micro-axial flow pump ^a
	Percutaneous (transfemoral) ECMO
	LA femoral artery centrifugal pump ^b
Failure to wean from CPB	IABP
	Micro-axial flow pump ^a
	ECMO
	Centrifugal pumps as LVAD, RVAD, BVAD
	Percutaneous pulsatile devices as LVAD, RVAD, BVAD ^c
Postcardiotomy HF	Long-term implantable devices
	IABP
	Micro-axial flow pump
	ECMO
	Centrifugal pumps ^d as LVAD, RVAD, BVAD
	Percutaneous pulsatile devices ^e as LVAD, RVAD, BVAD
Long-term implantable devices first, second and third generation	

^aImpella; ^bTandemHeart; ^cAbiomed BVS 5000, AB 5000; Thoratec PVAD, Berlin Heart EXCOR; ^dCentrimag Levitronix, Biomedicus Medtronic etc. II devices except those specified as long term are for short-term support. BVAD, bi-ventricular assist device; CPB, cardiopulmonary bypass; ECMO, extracorporeal membrane oxygenation; HF, heart failure; IABP, intra-aortic balloon pump; LA, left atrial; LVAD, left ventricular assist device; PVAD, paracorporeal ventricular assist device; RVAD, right ventricular assist device.

long-term mechanical circulatory devices used in the three clinical scenarios.

Conclusion

This review offers practical recommendations for managing perioperative HF in cardiac surgery based mostly on European experts' opinion. It outlines typical scenarios and profiles classifying and defining low CO syndrome and cardiogenic shock in cardiac surgery. As the role of inotropes is accentuated, the cardiosurgical community needs to have evidence-based facts on the short- and long-term mortality in cardiac surgery in European cardiosurgical centres. The impact of inotropes is increasingly studied outside of cardiac surgery, highlighting the urgent necessity for cardiac surgery to mimic these studies. Similarly, large trials are still required to assess the best cardioprotective agent(s) and optimal protocol(s) for their use. The continuously expanding implementation of mechanical circulatory support - by means of short-term (extra- or paracorporeal) and long-term (implantable) devices - demand its documentation and study in a European registry.

Competing interests

All coauthors received reimbursement of travel expenses and/or a fee to participate at the workshop, entitled 'Management of Perioperative Cardiovascular Failure in Cardiothoracic Surgery' that was held in Zurich the 7th-8th of November 2008 for which event an Educational grant was received from Abbott. Dr Follath has received lecture fees and advisory board honoraria from Abbott. Dr Longrois reported being a consultant for Abbott and Orion Pharma. Dr Mebazaa reported being a consultant for Abbott, Orion Pharma, Pronota, Inverness and Bayer Pharma and receiving lecture fees from Abbott and Edwards Life Sciences. Dr Ranucci received consultancy fees from Edwards Lifesciences in the years 2006-2008 for Educational programs in the field of Hemodynamic monitoring; Edwards Lifesciences is not sponsoring this article. Dr Toller has received speaker's fees and advisory board fees from Abbott. Dr Wouters has received speaker's fees from Abbott for lectures on topics unrelated to this manuscript. Dr Seeberger is the principal investigator of the ongoing investigator initiated study: "The TEAM-project: multi-center trial on the effect of anesthetics on morbidity and mortality in patients undergoing major non cardiac surgery" that has received partial research funding by Abbott.

Acknowledgements

This initiative was sponsored by way of an educational grant from Abbott. The views expressed in this supplement are not necessarily the views of the sponsor.

Author details

¹Department of Anaesthesia and Intensive care, INSERM UMR 942, Lariboisière Hospital, University of Paris 7 - Diderot, 2 rue Ambroise Paré, 75010 Paris, France. ²Thessaloniki Heart Institute, St Luke's Hospital, Thessaloniki, Greece, 552 36. ³Intensive Care Unit, Department of Internal Medicine, University Hospital Zurich, Raemistrasse 100, CH 8091 Zurich, Switzerland. ⁴Department of Anaesthesiology and Intensive Care Medicine, Medical University Graz, 8036 Graz, Austria. ⁵APHP, Hôpital Bichat-Claude Bernard, Département d'Anesthésie-Réanimation, University Paris 7 Denis Diderot, Unité INSERM U 698, Paris, France. ⁶Department of Cardiothoracic Anesthesia and Intensive Care, Sahlgrenska University Hospital, S-413 45 Gothenburg, Sweden. ⁷Department of Nephrology Dialysis and Transplantation, San Bortolo Hospital, Viale Rodolfo 37, 36100 Vicenza, Italy. ⁸Department of Anaesthesiology, Academic Medical Center, University of Amsterdam, 1105 Amsterdam, Netherlands. ⁹Department for Cardiothoracic Surgery, Medical University of Vienna, Waehringer Guertel 18-20, A-1090 Vienna, Austria. ¹⁰Institute of Anaesthesiology Heart and Diabetes-Center, Nordrhein-Westfalen University Clinic of Ruhr-University Bochum, Georgstrasse 11, D-32545 Bad Oeynhausen, Germany. ¹¹Department of Cardio-Vascular Surgery, CHUV, Rue du Bugnon 46, 1011 Lausanne, Switzerland. ¹²Department of Anaesthesiology and Intensive Care Medicine, Charité-Universitätsmedizin Berlin, Campus Charité Mitte and Campus Virchow-Klinikum, 10098 Berlin, Germany. ¹³Department of Vascular Surgery, Erasmus Medical Centre, 's Gravendijkwal 230, 3015 CE Rotterdam, the Netherlands. ¹⁴Department of Cardiothoracic and Vascular Anesthesia and ICU, IRCCS Policlinico S Donato, 20097 Milan, Italy. ¹⁵Department of Anesthesia, Chelsea and Westminster Hospital, 369 Fulham Road, London SW10 9NH, UK. ¹⁶Department of Anesthesia, University Hospital Ghent, De Pintelaan 185, B-9000 Ghent, ER Schmid Institute of Anaesthesiology, Division of Cardiovascular Anaesthesia, University Hospital Zurich, Raemistrasse 100, CH-8091 Zurich, Switzerland. ¹⁷Department of Anesthesia, University Hospital, University of Basel, 4031 Basel, Switzerland. ¹⁸Institute of Anaesthesiology, Division of Cardiovascular Anaesthesia, University Hospital Zurich, Raemistrasse 100, CH-8091 Zurich, Switzerland. ¹⁹Division of Thoracic surgery, University Hospital Zurich, Raemistrasse 100, CH-8091 Zurich, Switzerland. ²⁰University Hospital Zürich, CH 8091 Zürich, Rämistr. 100, Switzerland.

Published: 28 April 2010

References

- Nieminen MS, Böhm M, Cowie MR, Drexler H, Filippatos GS, Jondeau G, Hasin Y, Lopez-Sendon J, Mebazaa A, Metra M, Rhodes A, Swedberg K, Priori SG, Garcia MA, Blanc JJ, Budaj A, Cowie MR, Dean V, Deckers J, Burgos EF, Lekakis J, Lindahl B, Mazzotta G, Morais J, Oto A, Smiseth OA, Garcia MA, Dickstein K, Albuquerque A, Conthe P, et al.: **Executive summary of the guidelines on the diagnosis and treatment of acute heart failure: the Task Force on Acute Heart Failure of the European Society of Cardiology.** *Eur Heart J* 2005,

- 26:384-416.
- Rudiger A, Harjola VP, Muller A, Mattila E, Salla P, Nieminen M, Follath F: **Acute heart failure: clinical presentation, one-year mortality and prognostic factors.** *Eur J Heart Fail* 2005, **7**:662-670.
- Siirila-Waris K, Lassus J, Melin J, Peuhkurinen K, Nieminen MS, Harjola VP: **Characteristics, outcomes, and predictors of 1-year mortality in patients hospitalized for acute heart failure.** *Eur Heart J* 2006, **27**:3011-3017.
- Tavazzi L, Maggioni AP, Lucci D, Cacciatore G, Ansalone G, Oliva F, Porcu M: **Nationwide survey on acute heart failure in cardiology ward services in Italy.** *Eur Heart J* 2006, **27**:1207-1215.
- Nieminen MS, Brutsaert D, Dickstein K, Drexler H, Follath F, Harjola VP, Hochadel M, Komajda M, Lassus J, Lopez-Sendon JL, Ponikowski P, Tavazzi L; EuroHeart Survey Investigators; Heart Failure Association, European Society of Cardiology: **EuroHeart Failure Survey II (EHFS II): a survey on hospitalized acute heart failure patients: description of population.** *Eur Heart J* 2006, **27**:2725-2736.
- Zannad F, Mebazaa A, Juillière Y, Cohen-Solal A, Guize L, Alla F, Rougé P, Blin P, Barlet MH, Paolozzi L, Vincent C, Desnos M, Samii K; EFICA Investigators: **Clinical profile, contemporary management and one-year mortality in patients with severe acute heart failure syndromes: The EFICA study.** *Eur J Heart Fail* 2006, **8**:697-705.
- Fleisher LA, Beckman JA, Brown KA, Calkins H, Chaikof E, Fleischmann KE, Freeman WK, Froehlich JB, Kasper EK, Kersten JR, Riegel B, Robb JF; ACC/AHA TASK FORCE MEMBERS, Smith SC Jr, Jacobs AK, Adams CD, Anderson JL, Antman EM, Buller CE, Creager MA, Ettinger SM, Faxon DP, Fuster V, Halperin JL, Hiratzka LF, Hunt SA, Lytle BW, Md RN, Ornato JP, Page RL, et al.: **ACC/AHA 2007 Guidelines on Perioperative Cardiovascular Evaluation and Care for Noncardiac Surgery: Executive Summary: A Report of the American College of Cardiology/American Heart Association Task Force on Practice Guidelines (Writing Committee to Revise the 2002 Guidelines on Perioperative Cardiovascular Evaluation for Noncardiac Surgery): Developed in Collaboration With the American Society of Echocardiography, American Society of Nuclear Cardiology, Heart Rhythm Society, Society of Cardiovascular Anesthesiologists, Society for Cardiovascular Angiography and Interventions, Society for Vascular Medicine and Biology, and Society for Vascular Surgery.** *Circulation* 2007, **116**:1971-1996.
- Task Force for Diagnosis and Treatment of Acute and Chronic Heart Failure 2008 of European Society of Cardiology, Dickstein K, Cohen-Solal A, Filippatos G, McMurray JJ, Ponikowski P, Poole-Wilson PA, Strömberg A, van Veldhuisen DJ, Atar D, Hoes AW, Keren A, Mebazaa A, Nieminen M, Priori SG, Swedberg K; ESC Committee for Practice Guidelines, Vahanian A, Camm J, De Caterina R, Dean V, Dickstein K, Filippatos G, Funck-Brentano C, Hellemans I, Kristensen SD, McGregor K, Sechtem U, Silber S, Tendera M, et al.: **ESC Guidelines for the diagnosis and treatment of acute and chronic heart failure 2008: the Task Force for the Diagnosis and Treatment of Acute and Chronic Heart Failure 2008 of the European Society of Cardiology. Developed in collaboration with the Heart Failure Association of the ESC (HFA) and endorsed by the European Society of Intensive Care Medicine (ESICM).** *Eur Heart J* 2008, **29**:2388-2442.
- Jessup M, Abraham WT, Casey DE, Feldman AM, Francis GS, Ganiats TG, Konstam MA, Mancini DM, Rahko PS, Silver MA, Stevenson LW, Yancy CW: **2009 focused update: ACCF/AHA Guidelines for the Diagnosis and Management of Heart Failure in Adults: a report of the American College of Cardiology Foundation/American Heart Association Task Force on Practice Guidelines: developed in collaboration with the International Society for Heart and Lung Transplantation.** *Circulation* 2009, **119**:1977-2016.
- Rudiger A, Businger F, Streit M, Schmid ER, Maggiorini M, Follath F: **Presentation and outcome of critically ill medical and cardiac-surgery patients with acute heart failure.** *Swiss Med Wkly* 2009, **139**:110-116.
- Pae WE Jr, Miller CA, Matthews Y, Pierce WS: **Ventricular assist devices for postcardiotomy cardiogenic shock. A combined registry experience.** *J Thorac Cardiovasc Surg* 1992, **104**:541-552; discussion 552-553.
- Tritapepe L, De Santis V, Vitale D, Guarracino F, Pellegrini F, Pietropaoli P, Singer M: **Levosimendan pre-treatment improves outcomes in patients undergoing coronary artery bypass graft surgery.** *Br J Anaesth* 2009, **102**:198-204.
- Davila-Roman VG, Waggoner AD, Hopkins WE, Barzilai B: **Right ventricular dysfunction in low output syndrome after cardiac operations: assessment by transesophageal echocardiography.** *Ann Thorac Surg* 1995, **60**:1081-1086.

14. Dunser MW, Mayr AJ, Ulmer H, Ritsch N, Knotzer H, Pajk W, Luckner G, Mutz NJ, Hasibeder WR: **The effects of vasopressin on systemic hemodynamics in catecholamine-resistant septic and postcardiotomy shock: a retrospective analysis.** *Anesth Analg* 2001, **93**:7-13.
15. Morales DL, Garrido MJ, Madigan JD, Helman DN, Faber J, Williams MR, Landry DW, Oz MC: **A double-blind randomized trial: prophylactic vasopressin reduces hypotension after cardiopulmonary bypass.** *Ann Thorac Surg* 2003, **75**:926-930.
16. Nashef SA, Roques F, Michel P, Gauducheau E, Lemeshow S, Salamon R: **European system for cardiac operative risk evaluation (EuroSCORE).** *Eur J Cardiothorac Surg* 1999, **16**:9-13.
17. Rao V, Ivanov J, Weisel RD, Ikonomidis JS, Christakis GT, David TE: **Predictors of low cardiac output syndrome after coronary artery bypass.** *J Thorac Cardiovasc Surg* 1996, **112**:38-51.
18. Kazmers A, Cerqueira MD, Zierler RE: **Perioperative and late outcome in patients with left ventricular ejection fraction of 35% or less who require major vascular surgery.** *J Vasc Surg* 1988, **8**:307-315.
19. Bhatti F, Grayson AD, Grotte G, Fabri BM, Au J, Jones M, Bridgewater B: **The logistic EuroSCORE in cardiac surgery: how well does it predict operative risk?** *Heart* 2006, **92**:1817-1820.
20. Matsuura K, Ogino H, Matsuda H, Minatoya K, Sasaki H, Yagihara T, Kitamura S: **Limitations of EuroSCORE for measurement of risk-stratified mortality in aortic arch surgery using selective cerebral perfusion: is advanced age no longer a risk?** *Ann Thorac Surg* 2006, **81**:2084-2087.
21. Grossi EA, Schwartz CF, Yu PJ, Jorde UP, Crooke GA, Grau JB, Ribakove GH, Baumann FG, Ursunanno P, Culliford AT, Colvin SB, Galloway AC: **High-risk aortic valve replacement: are the outcomes as bad as predicted?** *Ann Thorac Surg* 2008, **85**:102-106; discussion 107.
22. Choong CK, Sergeant P, Nashef SA, Smith JA, Bridgewater B: **The EuroSCORE risk stratification system in the current era: how accurate is it and what should be done if it is inaccurate?** *Eur J Cardiothorac Surg* 2009, **35**:59-61.
23. Zheng Z, Li Y, Zhang S, Hu S: **The Chinese coronary artery bypass grafting registry study: how well does the EuroSCORE predict operative risk for Chinese population?** *Eur J Cardiothorac Surg* 2009, **35**:54-58.
24. D'Errigo P, Seccareccia F, Rosato S, Manno V, Badoni G, Fusco D, Perucci CA: **Comparison between an empirically derived model and the EuroSCORE system in the evaluation of hospital performance: the example of the Italian CABG Outcome Project.** *Eur J Cardiothorac Surg* 2008, **33**:325-333.
25. Maisel A, Mueller C, Adams K Jr, Anker SD, Aspromonte N, Cleland JG, Cohen-Solal A, Dahlstrom U, DeMaria A, Di Somma S, Filippatos GS, Fonarow GC, Jourdain P, Komajda M, Liu PP, McDonagh T, McDonald K, Mebazaa A, Nieminen MS, Peacock WF, Tubaro M, Valle R, Vanderhyden M, Yancy CW, Zannad F, Braunwald E: **State of the art: using natriuretic peptide levels in clinical practice.** *Eur J Heart Fail* 2008, **10**:824-839.
26. Jankowski M: **B-type natriuretic peptide for diagnosis and therapy.** *Recent Pat Cardiovasc Drug Discov* 2008, **3**:77-83.
27. Hutfless R, Kazanegra R, Madani M, Bhalla MA, Tulua-Tata A, Chen A, Clopton P, James C, Chiu A, Maisel AS: **Utility of B-type natriuretic peptide in predicting postoperative complications and outcomes in patients undergoing heart surgery.** *J Am Coll Cardiol* 2004, **43**:1873-1879.
28. Pedrazzini GB, Masson S, Latini R, Klersy C, Rossi MG, Pasotti E, Faletta FF, Siclari F, Minervini F, Moccetti T, Auricchio A: **Comparison of brain natriuretic peptide plasma levels versus logistic EuroSCORE in predicting in-hospital and late postoperative mortality in patients undergoing aortic valve replacement for symptomatic aortic stenosis.** *Am J Cardiol* 2008, **102**:749-754.
29. Eliasdottr SB, Klemenzson G, Torfason B, Valsson F: **Brain natriuretic peptide is a good predictor for outcome in cardiac surgery.** *Acta Anaesthesiol Scand* 2008, **52**:182-187.
30. Ross S, Foex P: **Protective effects of anaesthetics in reversible and irreversible ischaemia-reperfusion injury.** *Br J Anaesth* 1999, **82**:622-632.
31. De Hert SG, Turani F, Mathur S, Stowe DF: **Cardioprotection with volatile anaesthetics: mechanisms and clinical implications.** *Anesth Analg* 2005, **100**:1584-1593.
32. Bein B, Turowski P, Renner J, Hanss R, Steinfath M, Scholz J, Tonner PH: **Comparison of xenon-based anaesthesia compared with total intravenous anaesthesia in high risk surgical patients.** *Anaesthesia* 2005, **60**:960-967.
33. Conzen PF, Fischer S, Dettler C, Peter K: **Sevoflurane provides greater protection of the myocardium than propofol in patients undergoing off-pump coronary artery bypass surgery.** *Anesthesiology* 2003, **99**:826-833.
34. De Hert SG, Cromheecke S, ten Broecke PW, Mertens E, De Blier IG, Stockman BA, Rodrigus IE, Van der Linden PJ: **Effects of propofol, desflurane, and sevoflurane on recovery of myocardial function after coronary surgery in elderly high-risk patients.** *Anesthesiology* 2003, **99**:314-323.
35. De Hert SG, ten Broecke PW, Mertens E, Van Sommeren EW, De Blier IG, Stockman BA, Rodrigus IE: **Sevoflurane but not propofol preserves myocardial function in coronary surgery patients.** *Anesthesiology* 2002, **97**:42-49.
36. De Hert SG, Van der Linden PJ, Cromheecke S, Meeus R, Nelis A, Van Reeth V, ten Broecke PW, De Blier IG, Stockman BA, Rodrigus IE: **Cardioprotective properties of sevoflurane in patients undergoing coronary surgery with cardiopulmonary bypass are related to the modalities of its administration.** *Anesthesiology* 2004, **101**:299-310.
37. Landoni G, Biondi-Zoccai GG, Zangrillo A, Bignami E, D'Avolio S, Marchetti C, Calabrò MG, Fochi O, Guarracino F, Tritapepe L, De Hert S, Torri G: **Desflurane and sevoflurane in cardiac surgery: a meta-analysis of randomized clinical trials.** *J Cardiothorac Vasc Anesth* 2007, **21**:502-511.
38. Jakobsen CJ, Berg H, Hindsholm KB, Faddy N, Sloth E: **The influence of propofol versus sevoflurane anaesthesia on outcome in 10,535 cardiac surgical procedures.** *J Cardiothorac Vasc Anesth* 2007, **21**:664-671.
39. Du Toit EF, Muller CA, McCarthy J, Opie LH: **Levosimendan: effects of a calcium sensitizer on function and arrhythmias and cyclic nucleotide levels during ischemia/reperfusion in the Langendorff-perfused guinea pig heart.** *J Pharmacol Exp Ther* 1999, **290**:505-514.
40. Sonntag S, Sundberg S, Lehtonen LA, Kleber FX: **The calcium sensitizer levosimendan improves the function of stunned myocardium after percutaneous transluminal coronary angioplasty in acute myocardial ischemia.** *J Am Coll Cardiol* 2004, **43**:2177-2182.
41. Zangrillo A, Biondi-Zoccai G, Mizzi A, Bruno G, Bignami E, Gerli C, De Santis V, Tritapepe L, Landoni G: **Levosimendan reduces cardiac troponin release after cardiac surgery: a meta-analysis of randomized controlled studies.** *J Cardiothorac Vasc Anesth* 2009, **23**:474-478.
42. De Hert SG, Lørsomradee S, vanden Eede H, Cromheecke S, Van der Linden PJ: **A randomized trial evaluating different modalities of levosimendan administration in cardiac surgery patients with myocardial dysfunction.** *J Cardiothorac Vasc Anesth* 2008, **22**:699-705.
43. Soeding PE, Royse CF, Wright CE, Royse AG, Angus JA: **Inoprotection: the perioperative role of levosimendan.** *Anaesth Intensive Care* 2007, **35**:845-862.
44. Buhre W, Weyland A, Schorn B, Scholz M, Kazmaier S, Hoeft A, Sonntag H: **Changes in central venous pressure and pulmonary capillary wedge pressure do not indicate changes in right and left heart volume in patients undergoing coronary artery bypass surgery.** *Eur J Anaesthesiol* 1999, **16**:11-17.
45. Godje O, Peyrel M, Seebauer T, Lamm P, Mair H, Reichart B: **Central venous pressure, pulmonary capillary wedge pressure and intrathoracic blood volumes as preload indicators in cardiac surgery patients.** *Eur J Cardiothorac Surg* 1998, **13**:533-539; discussion 539-540.
46. Kumar A, Anel R, Bunnell E, Habet K, Zanotti S, Marshall S, Neumann A, Ali A, Cheang M, Kavinsky C, Parrillo JE: **Pulmonary artery occlusion pressure and central venous pressure fail to predict ventricular filling volume, cardiac performance, or the response to volume infusion in normal subjects.** *Crit Care Med* 2004, **32**:691-699.
47. Shippy CR, Appel PL, Shoemaker WC: **Reliability of clinical monitoring to assess blood volume in critically ill patients.** *Crit Care Med* 1984, **12**:107-112.
48. Buhre W, Buhre K, Kazmaier S, Sonntag H, Weyland A: **Assessment of cardiac preload by indicator dilution and transoesophageal echocardiography.** *Eur J Anaesthesiol* 2001, **18**:662-667.
49. Lichtwarck-Aschoff M, Beale R, Pfeiffer UJ: **Central venous pressure, pulmonary artery occlusion pressure, intrathoracic blood volume, and right ventricular end-diastolic volume as indicators of cardiac preload.** *J Crit Care* 1996, **11**:180-188.
50. Wiesenack C, Prasser C, Keyl C, Rodig G: **Assessment of intrathoracic blood volume as an indicator of cardiac preload: single transpulmonary thermodilution technique versus assessment of pressure preload parameters derived from a pulmonary artery catheter.** *J Cardiothorac Vasc Anesth* 2001, **15**:584-588.
51. Cavallaro F, Sandroni C, Antonelli M: **Functional hemodynamic monitoring and dynamic indices of fluid responsiveness.** *Minerva Anesthesiol* 2008, **74**:123-135.
52. Sander M, Spies CD, Berger K, Grubitzsch H, Foer A, Kramer M, Carl M, von Heymann C: **Prediction of volume response under open-chest conditions during coronary artery bypass surgery.** *Crit Care* 2007, **11**:R121.
53. Couture P, Denault AY, McKenty S, Boudreault D, Plante F, Perron R, Babin D,

- Normandin L, Poirier N: **Impact of routine use of intraoperative transesophageal echocardiography during cardiac surgery.** *Can J Anaesth* 2000, **47**:20-26.
54. Mebazaa A, Karpati P, Renaud E, Algotsson L: **Acute right ventricular failure - from pathophysiology to new treatments.** *Intensive Care Med* 2004, **30**:185-196.
55. Fellahi JL, Parienti JJ, Hanouz JL, Plaud B, Riou B, Ouattara A: **Perioperative use of dobutamine in cardiac surgery and adverse cardiac outcome: propensity-adjusted analyses.** *Anesthesiology* 2008, **108**:979-987.
56. Gillies M, Bellomo R, Doolan L, Buxton B: **Bench-to-bedside review: Inotropic drug therapy after adult cardiac surgery - a systematic literature review.** *Crit Care* 2005, **9**:266-279.
57. Butterworth JFt, Prielipp RC, Royster RL, Spray BJ, Kon ND, Wallenhaupt SL, Zaloga GP: **Dobutamine increases heart rate more than epinephrine in patients recovering from aortocoronary bypass surgery.** *J Cardiothorac Vasc Anesth* 1992, **6**:535-541.
58. Fowler MB, Alderman EL, Oesterle SN, Derby G, Daughters GT, Stinson EB, Ingels NB, Mitchell RS, Miller DC: **Dobutamine and dopamine after cardiac surgery: greater augmentation of myocardial blood flow with dobutamine.** *Circulation* 1984, **70**:1103-1111.
59. Gunnicker M, Brinkmann M, Donovan TJ, Freund U, Schieffer M, Reidemeister JC: **The efficacy of amrinone or adrenaline on low cardiac output following cardiopulmonary bypass in patients with coronary artery disease undergoing preoperative beta-blockade.** *Thorac Cardiovasc Surg* 1995, **43**:153-160.
60. Svedjeholm R, Hallhagen S, Ekroth R, Joachimsson PO, Ronquist G: **Dopamine and high-dose insulin infusion (glucose-insulin-potassium) after a cardiac operation: effects on myocardial metabolism.** *Ann Thorac Surg* 1991, **51**:262-270.
61. Rosseel PM, Santman FW, Bouter H, Dott CS: **Postcardiac surgery low cardiac output syndrome: dopexamine or dopamine?** *Intensive Care Med* 1997, **23**:962-968.
62. MacGregor DA, Butterworth JFt, Zaloga CP, Prielipp RC, James R, Royster RL: **Hemodynamic and renal effects of dopexamine and dobutamine in patients with reduced cardiac output following coronary artery bypass grafting.** *Chest* 1994, **106**:835-841.
63. Kikura M, Sato S: **The efficacy of preemptive Milrinone or Amrinone therapy in patients undergoing coronary artery bypass grafting.** *Anesth Analg* 2002, **94**:22-30.
64. Rathmell JP, Prielipp RC, Butterworth JF, Williams E, Villamaria F, Testa L, Viscomi C, Ittleman FP, Baisden CE, Royster RL: **A multicenter, randomized, blind comparison of amrinone with milrinone after elective cardiac surgery.** *Anesth Analg* 1998, **86**:683-690.
65. Zerkowski HR, Gunnicker M, Freund U, Dieterich HA, Dressler HT, Doetsch N, Schieffer M, Hakim-Meibodi K, Lockhart JD, Reidemeister JC: **Low-output syndrome after heart surgery: is a monotherapy with phosphodiesterase-III inhibitors feasible? A comparative study of amrinone and enoximone.** *Thorac Cardiovasc Surg* 1992, **40**:371-377.
66. Dupuis JY, Bondy R, Cattran C, Nathan HJ, Wynands JE: **Amrinone and dobutamine as primary treatment of low cardiac output syndrome following coronary artery surgery: a comparison of their effects on hemodynamics and outcome.** *J Cardiothorac Vasc Anesth* 1992, **6**:542-553.
67. Feneck RO, Sherry KM, Withington PS, Oduro-Dominah A: **Comparison of the hemodynamic effects of milrinone with dobutamine in patients after cardiac surgery.** *J Cardiothorac Vasc Anesth* 2001, **15**:306-315.
68. Tarr TJ, Moore NA, Frazer RS, Shearer ES, Desmond MJ: **Haemodynamic effects and comparison of enoximone, dobutamine and dopamine following mitral valve surgery.** *Eur J Anaesthesiol Suppl* 1993, **8**:15-24.
69. Al-Shawaf E, Ayed A, Vislocky I, Radomir B, Dehrab N, Tarazi R: **Levosimendan or milrinone in the type 2 diabetic patient with low ejection fraction undergoing elective coronary artery surgery.** *J Cardiothorac Vasc Anesth* 2006, **20**:353-357.
70. Labriola C, Siro-Brigiani M, Carrata F, Santangelo E, Amantea B: **Hemodynamic effects of levosimendan in patients with low-output heart failure after cardiac surgery.** *Int J Clin Pharmacol Ther* 2004, **42**:204-211.
71. Siirila-Waris K, Suojaranta-Yliinen R, Harjola VP: **Levosimendan in cardiac surgery.** *J Cardiothorac Vasc Anesth* 2005, **19**:345-349.
72. Alvarez J, Bouzada M, Fernandez AL, Caruezo V, Taboada M, Rodriguez J, Ginesta V, Rubio J, Garcia-Bengochea JB, Gonzalez-Juanatey JR: **[Hemodynamic effects of levosimendan compared with dobutamine in patients with low cardiac output after cardiac surgery].** *Rev Esp Cardiol* 2006, **59**:338-345.
73. Levin RL, Degrange MA, Porcile R, Salvagio F, Blanco N, Botbol AL, Tanus E, del Mazo CD: **[The calcium sensitizer levosimendan gives superior results to dobutamine in postoperative low cardiac output syndrome].** *Rev Esp Cardiol* 2008, **61**:471-479.
74. De Hert SG, Lørsomradee S, Cromheecke S, Van der Linden PJ: **The effects of levosimendan in cardiac surgery patients with poor left ventricular function.** *Anesth Analg* 2007, **104**:766-773.
75. Michaels AD, McKeown B, Kostal M, Vakharia KT, Jordan MV, Gerber IL, Foster E, Chatterjee K: **Effects of intravenous levosimendan on human coronary vasomotor regulation, left ventricular wall stress, and myocardial oxygen uptake.** *Circulation* 2005, **111**:1504-1509.
76. Jorgensen K, Bech-Hanssen O, Houltz E, Ricksten SE: **Effects of levosimendan on left ventricular relaxation and early filling at maintained preload and afterload conditions after aortic valve replacement for aortic stenosis.** *Circulation* 2008, **117**:1075-1081.
77. Yau TM, Ikonomidis JS, Weisel RD, Mickle DA, Ivanov J, Mohabber MK, Tumiati L, Carson S, Liu P: **Ventricular function after normothermic versus hypothermic cardioplegia.** *J Thorac Cardiovasc Surg* 1993, **105**:833-843; discussion 843-844.
78. Teoh KH, Christakis GT, Weisel RD, Fremes SE, Mickle DA, Romaschin AD, Harding RS, Ivanov J, Madonik MM, Ross IM, et al.: **Accelerated myocardial metabolic recovery with terminal warm blood cardioplegia.** *J Thorac Cardiovasc Surg* 1986, **91**:888-895.
79. Christakis GT, Weisel RD, Ivanov J, David TE, Goldman BS, Salerno TA: **Coronary artery bypass grafting in patients with poor ventricular function.** *Cardiovascular Surgeons of the University of Toronto. J Thorac Cardiovasc Surg* 1992, **103**:1083-1091; discussion 1091-1092.
80. Fedoruk LM, Kron IL: **An unusual case of cardiac dysfunction after left ventricular reconstruction.** *J Cardiothorac Surg* 2006, **1**:28.
81. Cotter G, Moshkovitz Y, Kaluski E, Milo O, Nobikov Y, Schneeweiss A, Krakover R, Vered Z: **The role of cardiac power and systemic vascular resistance in the pathophysiology and diagnosis of patients with acute congestive heart failure.** *Eur J Heart Fail* 2003, **5**:443-451.
82. Helman DN, Morales DL, Edwards NM, Mancini DM, Chen JM, Rose EA, Oz MC: **Left ventricular assist device bridge-to-transplant network improves survival after failed cardiomy.** *Ann Thorac Surg* 1999, **68**:1187-1194.
83. Miller LW, Pagani FD, Russell SD, John R, Boyle AJ, Aaronson KD, Conte JV, Naka Y, Mancini D, Delgado RM, MacGillivray TE, Farrar DJ, Frazier OH; HeartMate II Clinical Investigators: **Use of a continuous-flow device in patients awaiting heart transplantation.** *N Engl J Med* 2007, **357**:885-896.
84. Wiesenthaler G, O'Driscoll G, Jansz P, Khaghani A, Strueber M: **First clinical experience with the novel HeartWare HVAD pump with hydrodynamically levitated rotor in a multiinstitutional trial.** *J Heart Lung Transpl* 2009, in press.
85. Pons JM, Granados A, Espinas JA, Borrás JM, Martín I, Moreno V: **Assessing open heart surgery mortality in Catalonia (Spain) through a predictive risk model.** *Eur J Cardiothorac Surg* 1997, **11**:415-423.
86. Roques F, Gabrielle F, Michel P, De Vincentiis C, David M, Baudet E: **Quality of care in adult heart surgery: proposal for a self-assessment approach based on a French multicenter study.** *Eur J Cardiothorac Surg* 1995, **9**:433-439.
87. Tu JV, Jaglal SB, Naylor CD: **Multicenter validation of a risk index for mortality, intensive care unit stay, and overall hospital length of stay after cardiac surgery.** *Steering Committee of the Provincial Adult Cardiac Care Network of Ontario. Circulation* 1995, **91**:677-684.
88. Higgins TL, Estafanous FG, Loop FD, Beck GJ, Blum JM, Parandhi L: **Stratification of morbidity and mortality outcome by preoperative risk factors in coronary artery bypass patients. A clinical severity score.** *JAMA* 1992, **267**:2344-2348.
89. Parsonnet V, Dean D, Bernstein AD: **A method of uniform stratification of risk for evaluating the results of surgery in acquired adult heart disease.** *Circulation* 1989, **79**:13-12.
90. Samuels LE, Kaufman MS, Thomas MP, Holmes EC, Brockman SK, Wechsler AS: **Pharmacological criteria for ventricular assist device insertion following postcardiotomy shock: experience with the Abiomed BVS system.** *J Card Surg* 1999, **14**:288-293.

doi:10.1186/cc8153

Cite this article as: Mebazaa A, et al: Practical recommendations on the management of perioperative heart failure in cardiac surgery. *Critical Care* 2010, **14**:201.

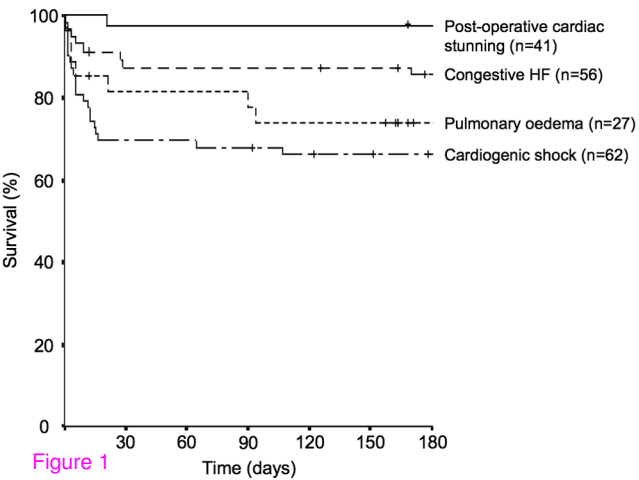
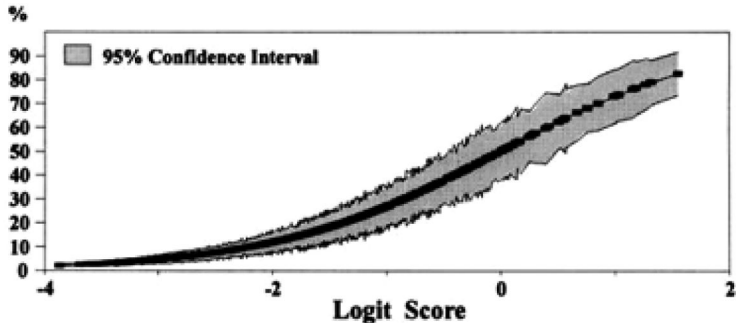


Figure 1



LVGRADE	1	2	2	1	2	1	1	2	3	3	1	3	3	2	3	3	2	3	3	4	2	4	3	2	3	3	3	3	4	4	4	4		
ACB REDO	0	0	0	0	0	0	0	0	0	0	0	0	1	0	0	1	1	1	1	1	0	1	1	0	1	0	1	0	1	1	0	1	0	
SEX	M	M	M	M	M	F	M	M	M	F	M	F	M	M	M	M	M	F	F	M	F	M	F	M	M	F	M	M	F	M	F	F		
TIMING	E	E	S	S	E	S	S	S	S	E	S	S	E	E	S	S	S	E	S	E	U	E	S	U	S	U	U	S	U	U	U	U		
DIABETES	0	0	0	0	0	1	0	0	1	1	0	0	1	1	1	0	0	1	0	0	0	1	0	1	1	1	1	1	1	1	0	0	1	
AGE \geq 70	0	0	0	1	0	0	0	0	0	1	1	0	0	0	1	1	0	1	0	0	0	1	0	0	1	1	0	1	1	0	1	0	1	
L MAIN DISEASE	0	0	0	0	0	0	1	0	0	0	1	0	0	1	1	1	0	0	0	1	1	0	0	0	1	0	0	0	1	0	0	0	0	
RECENT MI	0	0	0	0	1	0	0	1	0	0	1	1	0	0	0	0	0	0	1	0	0	0	0	1	1	1	1	1	1	1	1	1	1	
TVD	0	0	0	0	1	1	0	1	0	0	0	1	0	1	1	0	1	1	0	1	1	0	1	1	0	1	1	1	1	1	1	0	1	1

Figure 2

Comparison: Levosimendan in cardiac surgery

Outcome: Cardiac troponin release

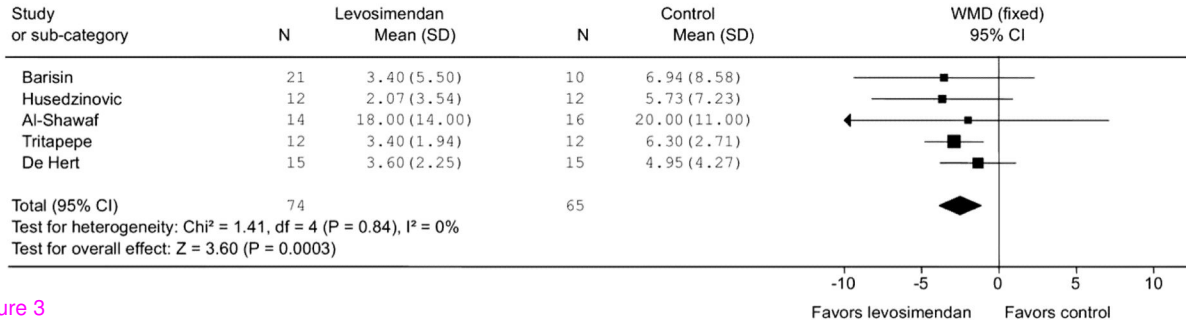


Figure 3