



HAL
open science

Peripheral T-cell lymphomas with a follicular growth pattern are derived from follicular helper T cells (TFH) and may show overlapping features with angioimmunoblastic T-cell lymphomas.

Yenlin Huang, Anne Moreau, Jehan Dupuis, Berthold Streubel, Barbara Petit, Steven Le Gouill, Nadine Martin-Garcia, Christiane Copie-Bergman, Fanny Gaillard, Marwan Qubaja, et al.

► **To cite this version:**

Yenlin Huang, Anne Moreau, Jehan Dupuis, Berthold Streubel, Barbara Petit, et al.. Peripheral T-cell lymphomas with a follicular growth pattern are derived from follicular helper T cells (TFH) and may show overlapping features with angioimmunoblastic T-cell lymphomas.. American Journal of Surgical Pathology, 2009, 33 (5), pp.682-90. 10.1097/PAS.0b013e3181971591 . inserm-00385332

HAL Id: inserm-00385332

<https://inserm.hal.science/inserm-00385332v1>

Submitted on 19 May 2009

HAL is a multi-disciplinary open access archive for the deposit and dissemination of scientific research documents, whether they are published or not. The documents may come from teaching and research institutions in France or abroad, or from public or private research centers.

L'archive ouverte pluridisciplinaire **HAL**, est destinée au dépôt et à la diffusion de documents scientifiques de niveau recherche, publiés ou non, émanant des établissements d'enseignement et de recherche français ou étrangers, des laboratoires publics ou privés.

1
2
3
4 **TITLE:**

5 **Peripheral T-cell lymphomas with a follicular growth pattern are derived from**
6 **follicular helper T cells (T_{FH}) and may show overlapping features with**
7 **angioimmunoblastic T-cell lymphomas**
8
9

10
11
12 **AUTHORS:**

13
14 Yenlin Huang, MD (1, 2, 3), Anne Moreau, MD (4), Jehan Dupuis, MD (5), Berthold
15 Streubel, MD (6), Barbara Petit, MD (7), Steven Le Gouill, MD, PhD (8), Nadine Martin-
16 Garcia (1, 2, 3), Christiane Copie-Bergman, MD, PhD (1, 2, 3), Fanny Gaillard, MD (4),
17 Marwan Qubaja, MD (9), Bettina Fabiani, MD, (10), Giovanna Roncador (11), Corinne
18 Haioun, MD (5), Marie-Hélène Delfau-Larue, MD, PhD (1, 2, 12), Teresa Marafioti, MD,
19 FRCPath (13), Andreas Chott, MD (6), Philippe Gaulard, MD (1, 2, 3).

20
21 (1) INSERM, Unité 841, Equipe 9, Créteil, F-94010, France; (2) Université Paris 12, Faculté
22 de Médecine, Créteil, F-94010, France; (3) Département de Pathologie, (5) Service
23 d'Hématologie Clinique, (12) Service d'Immunologie Biologique, AP-HP, Groupe Henri-
24 Mondor Albert-Chenevier, Créteil, F-94010, France; (4) Pathologie, (8) Hématologie
25 Clinique, Hôpital Hôtel-Dieu, Nantes, France ; (6) Pathology, Medical University of Vienna,
26 Austria; (7) Pathologie, CHU Dupuytren, Limoges, France; (9) Pathologie, Hôpital Hôtel
27 Dieu, Paris, France; (10) Pathologie, Hôpital Saint-Antoine, Paris, France; (11) Monoclonal
28 antibodies unit, Centro Nacional de Investigaciones Oncologicas, Madrid, Spain ; (13)
29 Leukaemia Research Immunodiagnosics Unit, Nuffield Department of Clinical Laboratory
30 Sciences, University of Oxford, John Radcliffe Hospital, Oxford, United Kingdom.
31
32
33
34
35
36
37
38
39
40
41
42

43 **CORRESPONDENCE**

44 Philippe Gaulard, MD.

45 Département de Pathologie

46 Hôpital Henri Mondor

47 94010 Créteil, FRANCE

48 Phone +33 (0) 1 49 81 27 43

49 Fax: +33 (0) 1 49 81 27 33

50 E.mail : philippe.gaulard@hmn.aphp.fr
51
52
53
54
55
56
57
58
59
60
61
62
63
64
65

1
2
3
4 **ABSTRACT**

5 Rare cases of peripheral T-cell lymphomas with follicular growth pattern (PTCL-F) have been
6 recently reported, and their association with t(5;9)(q33;q22) involving *ITK* and *SYK* has been
7 suggested. However, the clinicopathologic aspects of PTCL-F are poorly described and the
8 normal cell counterpart of this subgroup of lymphoma is still unknown.

9
10 Therefore, we analysed the pathological, phenotypic and cytogenetic features of a series of 30
11 patients (range 33 – 88 years) which showed histopathologic features of PTCL-F in at least
12 one biopsy (n=30), either at initial presentation (n=26) or at relapse (n=4). Neoplastic cells
13 were medium-sized clear cells that were CD4+ (24/27, 89%), CD10+ (21/29, 72%), BCL-6+
14 (14/19, 74%) and expressed PD-1 (27/27, 100%), CXCL13 (23/27, 85%), and ICOS (11/11,
15 100%), markers of follicular helper T cells (T_{FH}). Four out of 22 patients (18%) had
16 t(5;9)(q33;q22) detected by fluorescent in situ hybridization. Patients with clinical data
17 available had multiple lymphadenopathies (25/28, 89%), stage III-IV disease (17/26, 65%), B
18 symptoms (7/27, 26%) and skin lesions (6/23, 26%). Three patients with sequential biopsies
19 disclosed clinical and histopathological features of AITL at initial presentation.

20
21 Our results show that this rare form of PTCL-F (1) has an immunophenotype indicative of
22 derivation from T_{FH} cells, (2) is associated with t(5;9) in a proportion of cases, and (3) shows
23 some overlapping features with AITL, raising the question of a possible relationship.
24
25

26
27 **Key words:** peripheral T-cell lymphoma, angioimmunoblastic T-cell lymphoma, follicular
28 helper T cell.
29
30
31
32
33
34
35
36
37
38
39
40
41
42
43
44
45
46
47
48
49
50
51
52
53
54
55
56
57
58
59
60
61
62
63
64
65

INTRODUCTION

Peripheral T-cell lymphomas (PTCL) comprise around 12% of all non-Hodgkin's lymphomas in Western countries. Among PTCL, those with a nodal presentation, include two well-defined clinicopathologic entities, angioimmunoblastic T-cell lymphomas (AITL) and ALK-positive anaplastic large cell lymphomas (ALCL) (36). The other cases are classified as either ALK-negative ALCL, or more frequently, peripheral T-cell lymphomas, unspecified (PTCL-u). Most cases of PTCL-u involve lymph nodes in a diffuse pattern and it was suggested that most PTCL-u were derived from CD4+ central memory T-cells (13) or activated peripheral T-cells (28). However, de Leval et al (8) recently reported three cases of PTCL-u with follicular involvement, and some cases with perifollicular growth pattern or involving the mantle zone have been described in other case reports (16, 32). Recently, Streubel et al (35) reported a novel t(5;9)(q33;q22) translocation in five out of 30 PTCL-u, including three with follicular growth pattern and one with perifollicular involvement. However, as for most PTCL, the normal cell counterpart of these PTCL with follicular involvement (PTCL-F) is unknown, and it is not established whether these PTCL-F represent a distinct subtype or a morphological variant showing overlap with other PTCL-u or AITL. In this respect, previous reports pointed out the common CD4+/CD10+/BCL-6+ phenotype of these PTCL-F, resembling that described in AITL, an entity which is now thought to be derived from a peculiar minor subset of T cells, designated follicular B helper T cells (T_{FH}) (7, 11, 14, 21, 42) and shows a morphological spectrum from cases demonstrating hyperplastic follicles to those with a diffuse pattern (1).

In this study, we aimed to investigate a series of PTCL-u with follicular growth pattern (PTCL-F) in order to describe their pathological and clinical aspects, to determine their normal cell counterpart, and to attempt to approach their possible relationship with AITL.

MATERIALS AND METHODS

Case selection

Forty specimens (lymph nodes = 36, skin = 2, nasopharynx = 2) from 30 patients were retrieved from the files of Departments of Pathology at Centre Hospitalo-Universitaire Henri Mondor in Créteil (n=22, 14 patients), at Centre Hospitalo-Universitaire de Nantes (n=12, 10 patients), and at Vienna General Hospital (n=6, 6 patients) during the period from 1994 to 2007. All patients had a diagnosis of PTCL-F either at diagnosis (n = 26) or at relapse (n=4). Parts of clinical, histologic, immunohistochemical, and genetic data of five patients have already been reported in two earlier publications (29, 35). Each biopsy was reviewed by at

1
2
3
4 least three of the four hematopathologists (P.G., A.M., Y.H., A.C.). Although none of the 30
5 samples classified as PTCL-F fulfilled the complete morphological and phenotypic criteria of
6 the recognized patterns of AITL (1), special attention was given to the presence of the
7 following features of AITL such as neoplastic clear cells, vascular hyperplasia, polymorphous
8 cellular infiltrates including eosinophils and plasma cells, and scattered B immunoblasts.
9 Cases had been previously stained with a panel of antibodies, directed against B (CD20) and
10 T-cell markers (CD2, CD3, CD5, CD7, CD4, CD8) and a follicular growth pattern had been
11 demonstrated by staining follicular dendritic cells (FDC) with CD23 and/or CNA.42
12 antibodies and mantle zone B-cells with IgD.
13
14
15
16
17
18
19
20

21 ***Immunohistochemical studies***

22 Immunohistochemistry was performed on deparaffinized tissue sections using a three-step
23 immunoperoxidase technique (for all antibodies except CXCL13). After antigen retrieval
24 either with 1mM EDTA buffer at pH 8.0 (DakoCytomation, Glostrup, Denmark) in a water
25 bath for 40 minutes (for most antibodies) or with 1X citrate buffer at pH 6 (Diapath,
26 Martinengo, Italy) in a 750W microwave oven for 15 minutes (for CXCL13), sections were
27 stained for CD2, CD4, CD5, CD7, CD10, CD23, CD57 (Novocastra, Newcastle, UK); CD3,
28 CD8, CD20, CNA.42, IgD, BCL-6 (DakoCytomation, Glostrup, Denmark) and CXCL13
29 (53610, R&D Systems, Minneapolis, MN) antigens. PD-1 was produced by one of the authors
30 (G.R.) (31). For CXCL13, a tyramide signal amplification system (CSAII kit,
31 DakoCytomation) was applied as previously described (11). ICOS staining was performed by
32 one of the authors (T.M) (24).
33
34
35
36
37
38
39
40
41
42

43 ***Epstein-Barr virus (EBV) studies***

44 The detection of EBV infected cells was performed using either immunohistochemistry with a
45 monoclonal antibody to LMP-1 (CS1-4, DakoCytomation) or in situ hybridization (ISH) with
46 fluorescein-conjugated EBV (EBERs 1 and 2) oligonucleotides (DakoCytomation, Glostrup,
47 Denmark) complementary to nuclear RNA portions of the *EBER* 1 and 2 genes. The ISH
48 procedure was performed on deparaffinized tissue sections, as previously reported (19).
49
50
51
52
53
54

55 ***Clonality analysis***

56 Twenty specimens from 17 patients were investigated for clonality analysis. DNA was
57 extracted from tumor samples using High Pure PCR Template Preparation Kit (Roche,
58 Mannheim, Germany). T-cell receptor (TCR) γ chain gene rearrangements were studied by
59
60
61
62
63
64
65

1
2
3
4 using a GC-clamp multiplex PCR- γ -DGGE procedure as previously described (37, 38) and
5 the immunoglobulin (Ig) gene rearrangements by using consensus primers from European
6 BIOMED-2 concerted action (41).
7
8
9

10 ***Fluorescent in situ hybridization (FISH) study***

11
12 Fluorescent in situ hybridization study was performed on deparaffinized tissue sections
13 according to the protocol described previously (35). The following bacterial artificial clones
14 (BACs) were selected to identify *ITK-SYK* rearrangements: RP11-563G12 and RP11-1091N2
15 flanking *ITK* for *ITK* translocations, RP11-31B18 and RP11-47O12 flanking *SYK* for *SYK*
16 translocations, and RP11-956N15 and CTB4E7 spanning *ITK* and *SYK* for *ITK-SYK*
17 translocations. BAC probes were directly labelled with SpectrumOrange- and
18 SpectrumGreen-dUTP using nick translation (Vysis). Twenty-four specimens from 23
19 patients were studied with all above-mentioned clones. For interphase FISH, 300 cells were
20 analyzed. The cutoff value for the diagnosis of each set of probes was the mean percentage of
21 cells with a false-positive signal constellation plus three standard deviation as assessed with
22 the use of tissue specimens obtained from 10 reactive lymph nodes.
23
24
25
26
27
28
29
30
31
32

33 **RESULTS**

34 ***Clinical characteristics of PTCL-F***

35
36 Sixteen patients were male and 14 were female. Median age was 67 years (range 33-88).
37
38 Among the patients with clinical data available, the clinical presentation appears similar to
39 what is usually observed in nodal forms of PTCL (data are given at the time of the first
40 episode with PTCL-F histology): 25/28 patients (89%) had multiple lymphadenopathies, 6/27
41 (22%) splenomegaly, 7/27 (26%) presented with B symptoms (ie. fever, weight loss or night
42 sweats) and 6/23 patients (26%) had skin rash or other skin lesions. Most patients (17/26,
43 65%) had disseminated, Ann Arbor stage III or IV disease. Eight out of 23 patients (35%) had
44 an elevated LDH level at diagnosis. Interestingly, some patients presented with peculiar
45 biological features characteristic for PTCL, and AITL in particular: hypergammaglobulinemia
46 (5/23, 22%), eosinophilia (1/21, 5%) or a positive Coombs' test (6/12, 50%). Owing to the
47 retrospective nature of this study including many referral cases, treatments given were
48 heterogeneous and follow-up data was not available for all patients, making it difficult to
49 draw any firm conclusion on therapeutic results in these patients. Among 23 patients with
50 available data regarding response to treatment (which ranged from oral alkylating-agent
51 monotherapy to high-dose chemotherapy with stem cell support), 20 (87%) eventually
52
53
54
55
56
57
58
59
60
61
62
63
64
65

1
2
3
4 showed at least a partial response to treatment, the others being refractory. At the time of last
5 follow-up, 11 patients died of their disease or disease related-complications after a median
6 follow-up of 24 months, 13 were alive including seven disease-free (follow-up ranging from
7 12 to 87 months, median 35 months) and six patients were lost to follow-up. Four patients
8 reached a persistent complete remission following multiagent, anthracyclin-based
9 chemotherapy, lasting for as long as 5 years.

10
11 Among the seven patients with sequential biopsies, three (#8, 15, 30) had clinical and
12 biological features of AITL at initial presentation - that is multiple lymphadenopathies,
13 splenomegaly, B symptoms, hypergammaglobulinemia, eosinophilia or a positive Coombs'
14 test.
15
16
17
18
19
20
21

22 ***Histopathological features of PTCL-F***

23
24 Among the 40 biopsies from these 30 patients, 30 disclosed features of PTCL with follicular
25 growth pattern (Table 1). Among those 30 samples with a diagnosis of PTCL-F (Figure 1 A-
26 F), neoplastic cells in eight samples were found to be confined within sharply demarcated
27 lymphoid follicles with attenuated mantle zones or marginal zones, responsible of a pattern
28 mimicking follicular lymphoma (FL-like). However, unlike centrocytes, neoplastic cells
29 displayed round or slightly irregular, medium-sized nuclei, with usually abundant cytoplasm.
30 The 22 remaining samples predominantly showed large, regular or irregular nodules
31 reminiscent of progressive transformation of germinal centers (PTGC-like). These nodules
32 were composed of mature IgD+ B lymphocytes admixed with small aggregates of neoplastic
33 cells displaying medium-sized nuclei with abundant clear cytoplasm. In five of these samples
34 (#9, 11, 21, 23, 28), a mixed FL-like and PTGC-like pattern was present. Three samples
35 (#15-2nd, 18, 26) classified in this category showed a more extensive background of small
36 IgD+ B lymphocytes interpreted as confluent B-cell nodules in view of the presence of some
37 remnants of FDC meshwork, with scattered aggregates of atypical clear T cells. At careful
38 examination, in nine samples (#9, 10, 12-1st, 14, 15-2nd, 16, 20, 24, 25), some limited foci of
39 paracortical hyperplasia containing a few plasma cells, eosinophils, and/or hyperplastic high
40 endothelial venules were observed.
41
42
43
44
45
46
47
48
49
50
51
52
53

54 ***Pathological features (histological evolution) in patients with consecutive biopsies (Table 2)***

55
56 Among the seven patients (#4, 5, 8, 12, 13, 15, 30) with consecutive biopsies, it is noteworthy
57 that three patients at first presentation disclosed typical histological and clinical features of
58 AITL (#8, 15, 30), but at relapse showed PTCL-F (Figure 1 G-H). Another patient (#4)
59
60
61
62
63
64
65

1
2
3
4 presenting with skin rash, disclosed polymorphous skin infiltrate consistent with cutaneous
5 lesions in AITL at first diagnosis, but the axillary lymph node biopsy three years later
6 revealed a PTCL-F with a FL-like pattern. Among the three remaining patients, one patient
7 (#13) with PTCL-F in the first biopsy at diagnosis relapsed as skin lesions with diffuse,
8 haphazard infiltrates of lymphoma cells suggestive of AITL, and the other two patients (#5,
9 12) with PTCL-F in the first lymph node biopsies then relapsed with a T-cell lymphoma
10 showing features of PTCL-F associated with areas reminiscent of AITL in the second lymph
11 node biopsies four and 14 years later, respectively.
12
13
14
15
16
17
18

19 ***Immunohistochemical findings of PTCL-F***

20 Neoplastic cells were T cells with a CD2+ (22/22, 100%), CD3+ (29/29, 100%), CD5+
21 (21/21, 100%) phenotype with a common loss of CD7 (5/23, 22%) and frequent expression of
22 CD10 (21/29, 72%) and of T_{FH} markers [PD-1+ (27/27, 100%), CXCL13+ (23/27, 85%),
23 BCL-6+ (14/19, 74%), CD57+ (4/19, 21%), ICOS (11/11, 100%)]. A CD4+ helper T-cell
24 immunophenotype was demonstrated in 24 out of 27 studied cases (89%). All three CD4-
25 cases were also negative for CD8. The 11 cases investigated for expression of TIA1 and/or
26 Granzyme B cytotoxic proteins were negative. Two of the 9 cases investigated for CD25
27 antigen disclosed heterogeneous staining on neoplastic cells. Presence of scattered CD20+ B-
28 immunoblasts was scored in 13/23 cases (56%) in the vicinity of the atypical T cells and a
29 few EBV-positive cells in 13/19 cases (68%). In addition, a population of small IgD+ B
30 lymphocytes surrounding the neoplastic cells was evidenced in 14 cases. With respect to the
31 three newly described T_{FH} markers CXCL13 (11, 14), PD-1 (31), and ICOS (20), CXCL13
32 was found to be positive in 23 out of the 27 interpretable specimens with a cytoplasmic and/or
33 dot-like staining whereas PD-1 disclosed membrane positivity on neoplastic cells of all 27
34 interpretable specimens and ICOS in the all 11 tested cases. The growth pattern was often
35 highlighted by the aid of CXCL13, PD-1 and/or ICOS staining. Between these three T_{FH}
36 markers, PD-1 and ICOS usually stained more neoplastic cells, often with a sheet-like pattern,
37 than did CXCL13.
38
39
40
41
42
43
44
45
46
47
48
49
50
51
52

53 ***Genotypic findings***

54 T-cell receptor γ rearrangement analysis was performed in 20 specimens from 17 patients.
55 Among the 16 patients with interpretable results, 14 patients were found to be clonal,
56 including one case disclosing, in addition to a predominant clone, oligoclonal bands (#21).
57 Clonality could be investigated in consecutive biopsies of two patients (#8, 15) showing
58
59
60
61
62
63
64
65

1
2
3
4 identical bands in the consecutive biopsies. Five out of the six cases (#9, 10, 13-1st, 16, 21)
5 investigated for immunoglobulin gene rearrangement were polyclonal, the remaining (#12-
6 2nd) showing an oligoclonal pattern, without any evidence of composite B-cell lymphoma
7 under microscopic examination.
8
9

10 11 ***Fluorescent in situ Hybridization findings***

12
13
14 Fluorescent in situ hybridization for t(5;9)(q33;q22) was performed in 24 biopsies from 23
15 patients. One (#3) failed due to lack of signal. Among the 22 patients with adequate signals,
16 four patients (18%) were found to have t(5;9)(q33;q22) (Figure 1 I), including two patients
17 previously reported (35). One additional patient (#29) was investigated by conventional
18 cytogenetics and it was negative for t(5;9). Among the four patients positive for t(5;9), one
19 (#20) presented with symptoms - intense pruritus, general weakness, multiple
20 lymphadenopathy, haemolytic anemia, and splenomegaly - known to be associated with
21 AITL. Another patient (#5) was investigated by FISH in two consecutive biopsies: this patient
22 initially presented as a disseminated disease with multiple lymphadenopathies showing
23 PTCL-F (FL-like) and recurred 4 years later as a stage II disease with some areas reminiscent
24 of AITL in addition to features of PTCL-F. Translocation t(5;9) was demonstrated on both
25 episodes.
26
27
28
29
30
31
32
33
34
35

36 **DISCUSSION**

37
38 We here report a series of 30 patients with peripheral T-cell lymphomas showing a follicular
39 growth pattern, the largest so far reported. We describe their morphological spectrum and
40 show their immunophenotype which is highly suggestive of derivation from T_{FH} cells. Based
41 on several observations including that of some patients with consecutive biopsies, we suggest
42 their possible relationship with AITL.
43
44
45

46
47 Peripheral T-cell lymphomas with a nodular growth pattern have been recently recognized
48 and regarded as part of the morphological spectrum of PTCL-u. To the best of our
49 knowledge, around 30 cases have been reported (3, 8, 15, 16, 18, 23, 29, 32, 34, 39, 40) that
50 have variable morphological appearance. In fact, several of these cases have been referred as
51 PTCL with either “follicular” or “perifollicular” involvement, comprising cases in which
52 neoplastic cells seem to localize within the germinal center, and other cases where neoplastic
53 cells are distributed within the marginal zone with a so-called perifollicular distribution or
54 involve expanded mantle zones of the follicles. Interestingly, most cases have been reported
55 to derive from helper CD4⁺ T cells (8, 16, 32), with frequent expression of BCL-6 and CD10
56
57
58
59
60
61
62
63
64
65

1
2
3
4 (8, 15, 16, 18, 34) and many cases have been reported to be associated with FDC network (8,
5 16, 18, 34, 40). It is yet unknown whether these variants represent the morphological
6 spectrum of the same disease. In the present series, we emphasized that PTCL with follicular
7 growth pattern include cases resembling those previously described by de Leval et al (8) and
8 by Ikonomidou et al (16) with a predominant involvement of the germinal center and patchy
9 involvement of the expanded mantle zones of the B-cell follicles, respectively.
10

11
12
13
14 By definition, all cases disclosed a peculiar distribution of neoplastic cells within the
15 germinal center and/or mantle zone of the B-cell follicles, therefore suggesting a possible
16 derivation from T_{FH} cells. Thus, we investigated by immunohistochemistry the expression of
17 several T_{FH} markers (CD10, CD57, BCL-6, CXCL13, PD-1, ICOS). In addition to the
18 frequent expression of CD10, CD57, BCL-6 in agreement with previous reports, we
19 demonstrate here expression of CXCL13, PD-1 and/or ICOS - three characteristic T_{FH}
20 markers recently shown to be applicable in diagnostic practice - in all 27 evaluable cases of
21 PTCL-F (3, 9, 11, 25, 26, 30, 31). This profile strongly supports that the T_{FH} cell can be
22 regarded as the normal cell counterpart of these lymphomas. CXCL13 is a chemokine that
23 promotes follicular homing by B and T cells as well as the migration of a subset of dendritic
24 cells into B-cell follicles in a lymphotoxin-dependent fashion (46). Originally designated as
25 B-cell-attracting chemokine 1 (BCA1), it interacts with its receptor, CXCR5, to help follicular
26 homing process. In view of these functions, its secretion by neoplastic T_{FH} cells could explain
27 the capacity to induce follicular structures with frequent expansion of IgD small lymphocytes
28 together with that of FDC in PTCL-F. Programmed death-1 (PD-1) and inducible
29 costimulator (ICOS) are members of the CD28 family of receptors that also includes CD28,
30 cytotoxic T-lymphocyte-associated antigen 4 (CTLA-4) and B- and T-lymphocyte attenuator
31 (BTLA) (9). These receptors play a role in the cellular immune response. These molecules
32 play an important role in T-cell dependent antibody responses and are expressed at very high
33 levels on T_{FH} cells within the light zone of germinal centers (5, 33). Recently, several reports
34 described that CXCL13, PD-1 and ICOS are overexpressed in T_{FH} cells as well as in AITL
35 not only at the transcriptional level (6, 7) but also at the protein level as documented by
36 immunohistochemistry (11, 14, 24, 31)
37

38
39
40
41
42
43
44
45
46
47
48
49
50
51
52
53
54
55
56
57
58
59
60
61
62
63
64
65
It is questionable whether there might be some overlap between those PTCL-F and some
variants of AITL. AITL is a distinct entity characterized by systemic manifestations including
B symptoms, multiple lymphadenopathies, skin rash, effusions, arthritis, typically associated
with polyclonal hypergammaglobulinemia and autoimmune manifestations (25). However,
the constellation of clinical and biological symptoms seen in the classic form of AITL is not

1
2
3
4 present in every patient (25) and the diagnosis of AITL – at least in its classic form – can rely
5 on a combination of morphologic, immunohistochemical and/or molecular criteria (2). AITL
6 has peculiar pathological features with a diffuse polymorphous infiltrate including variable
7 proportions of medium-sized neoplastic cells associated with prominent arborizing blood
8 vessels, proliferation of FDC and the presence of EBV-positive large B-cell blasts (10, 17).
9
10 Detection of markers such as CD10 or T_{FH} molecules may help (1, 9, 11, 14, 31). In a recent
11 study, we have shown its molecular link with T_{FH} (7), a finding further confirmed by
12 Piccaluga et al (27), therefore strongly supporting its derivation from the minor T_{FH} cell
13 population. By contrast, PTCL-u is regarded as a diagnosis of exclusion (36). Therefore, this
14 latter category is recognized as heterogeneous and may include cases with overlapping
15 features with other T-cell lymphoma entities (43), as recently suggested at the molecular level
16 between PTCL-u and AITL (7, 27, 28). In most of the previous studies, PTCL-F has been
17 included in the category of PTCL-u. Contrary to AITL, they do not show a diffuse effacement
18 of the architecture, lack polymorphous infiltrate in most cases and had not been so far
19 reported to have the clinical and biological features typical of AITL. From these previous
20 reports, most patients appear to present with multiple lymphadenopathies, disseminated stage
21 III-IV disease as well as frequent B symptoms, but the presence of skin lesions and biological
22 manifestations such as hypergammaglobulinemia and autoimmune haemolytic anemia were
23 not recorded. However, in addition to the common expression of CD10 and BCL-6 in a
24 proportion of cases, it is noteworthy that proliferation of high endothelial venules was noted
25 in several reports (8, 16, 32), and marked plasmacytosis, presence of large B-immunoblasts
26 and/or EBV-positive scattered cells have been reported (32, 34). In our study, we emphasize
27 these previous pathological overlapping findings with AITL: the neoplastic cells in PTCL-F
28 have medium-sized nuclei and abundant clear cytoplasm, are frequently admixed with
29 occasional large immunoblasts and also scattered EBV-positive blasts in a proportion of cases.
30
31 In addition, despite the fact that complete clinical and biological data could not be recorded
32 for all patients, some clinical and biological characteristics of AITL such as skin
33 manifestations, hypergammaglobulinemia and positive Coombs' test were recorded in a
34 percentage of patients in the present series. Finally, we show the common T_{FH}
35 immunophenotype in both diseases and describe some patients that may switch from AITL to
36 PTCL-F over time.

37
38
39
40
41
42
43
44
45
46
47
48
49
50
51
52
53
54
55
56
57 Altogether, these morphologic and phenotypic similarities and our observation of three
58 patients in this series disclosing typical clinical and pathological features of AITL at initial
59 presentation and PTCL-F in other sequential biopsies, support a relationship between PTCL-F
60
61
62
63
64
65

1
2
3
4 and AITL. Therefore, in agreement with a recent case report (3), it might be tempting to
5 speculate that, in at least some cases, PTCL-F could represent a peculiar stage of AITL in
6 which neoplastic cells remain located within the B-cell follicles as highlighted by PD-1,
7 CXCL13, and ICOS stainings. This hypothesis would imply several differences especially in
8 terms of cytokine secretion capacities which would explain why the *bona fide* clinical,
9 biological and histological features of AITL are lacking in most PTCL-F (such as marked
10 polymorphous infiltrates and florid hyperplasia of high-endothelial venules). This would also
11 imply that the criteria used to define AITL should be reviewed, including cases without the
12 constellation of clinical symptoms and pathological features of AITL observed in its classic
13 form. This hypothesis may be also supported by the observation that a proportion of T_{FH}-
14 derived PTCL-u shows at least some pathological and/or clinical features of AITL (7, 11, 30).
15 Interestingly, EBV was observed in 68% of the PTCL-F tested cases with a pattern
16 reminiscent of B-immunoblasts, a finding closer to that reported in most AITL than in PTCL-
17 u (2, 25, 44). Whether the presence of EBV should be regarded as an initiating event in
18 PTCL-F, as it has been proposed for AITL (10), is questionable. Therefore, our findings may
19 suggest that at least some PTCL-F cases may reflect the broad morphologic spectrum of AITL
20 and/or the lack of precise criteria for distinguishing borderline cases between PTCL-U,
21 PTCL-F, and AITL. However, it cannot be formally excluded that AITL and PTCL-F
22 represent distinct subtypes that, despite a common derivation from T_{FH} cells, differ according
23 to some oncogenic alterations.
24
25

26 Translocations of *ITK* on chromosome 5q33 and *SYK* on 9q22 which result in an *ITK-SYK*
27 fusion transcript were observed in four patients of the present series, but have not been
28 reported in 32 AITL cases investigated by FISH (12, 35). *ITK* belongs to a group of five
29 related kinases comprising the Tec family and plays a role in T cell development,
30 differentiation, and T cell receptor signalling (45). *SYK* is a non-receptor protein tyrosine
31 kinase that functions as a key regulator of multiple signal transduction pathways (4). In
32 comparison with *ITK*, the translocation of *SYK* has already been shown in myelodysplastic
33 syndromes in addition to t(5;9) (22). The biological significance of this translocation and its
34 specificity remain unclear, and studies aiming to investigate the genetic abnormalities of
35 PTCL-F compared to AITL are needed. Interestingly, overexpression of *SYK* has been
36 recently recorded in the vast majority of PTCL-u and AITL, independent of *ITK-SYK*
37 translocation, suggesting alternative alterations resulting in the involvement of *SYK* pathway
38 (12).
39
40
41
42
43
44
45
46
47
48
49
50
51
52
53
54
55
56
57
58
59
60
61
62
63
64
65

1
2
3
4 Whatever their relationship with other PTCL entities is, the peculiar histologic appearance of
5 PTCL-F generates a list of differential diagnoses. PTCL with follicular growth pattern should
6 be distinguished from reactive conditions and some B-cell lymphomas. At low power
7 magnification, nodular growth pattern could be mistaken as a follicular lymphoma. Follicles
8 in both diseases have decreased numbers of tingible body macrophages, attenuated mantle
9 zone, and neoplastic cells could be both BCL-6 and CD10 positive. Lack of cytologic
10 characteristics of centrocytes, abundant clear cytoplasm, and expression of T-cell markers in
11 addition to CXCL13, PD-1 and/or ICOS argue for a diagnosis of PTCL. Other cases with
12 large irregular nodules should be distinguished from a reactive process, specially PTGC, or
13 nodular lymphocyte predominant Hodgkin lymphoma and other small B-cell lymphomas such
14 as mantle cell lymphomas and marginal zone lymphomas. Immunohistochemistry showing
15 aggregates of atypical medium-sized T cells – sometimes with an abnormal T-cell phenotype
16 - within the follicles and salient morphology of background B cell infiltrates could help in
17 making a correct diagnosis. T_{FH} markers are useful to highlight the presence of aggregates of
18 atypical T cells in hyperplastic follicles.

19
20 In conclusion, our study shows that, in agreement with the distribution of the neoplastic cells
21 within zones of the B-cell follicle, the subgroup of PTCL with follicular growth pattern
22 derives from T_{FH} cells. It also indicates that at least some of them may present with the
23 clinical and pathological features of AITL. These findings may support a possible link
24 between PTCL-F and AITL. In routine practice, immunohistochemistry with T_{FH} markers is
25 mandatory to distinguish these lymphomas from reactive lymphoid hyperplasia and some B-
26 cell lymphomas. The biological significance of the association with t(5;9) warrants further
27 study.

28 29 30 31 32 33 34 35 36 37 38 39 40 41 42 43 44 **ACKNOWLEDGEMENTS:**

45 The authors wish to thank our colleagues Drs. T Petrella, AC Baglin, J Brière, and all other
46 pathologists as well as clinicians for providing samples and clinical informations.
47
48
49
50
51
52
53
54
55
56
57
58
59
60
61
62
63
64
65

1
2
3
4 **FIGURE LEGEND**

5 Two types of peripheral T-cell lymphoma with follicular growth pattern. A, Hematoxylin and
6 eosin (H&E)-stained sections showing a follicular lymphoma-like PTCL-F (#1) characterized
7 by numerous nodules in a back-to-back fashion mimicking a follicular lymphoma, composed
8 of medium-sized neoplastic cells with clear cytoplasm and irregular nuclei (inset). The
9 neoplastic cells are surrounded by (B) CD20+ B cells and positive for (C) CD5 and CXCL13
10 (inset, #8). D, H&E sections showing a progressive transformation of germinal center-like
11 PTCL-F (#29) characterized by small aggregates of neoplastic cells dispersed in large
12 irregular nodules mimicking progressive transformation of germinal center. The inset shows
13 that the neoplastic cells have irregular nuclei and clear cytoplasm. The neoplastic cells are
14 surrounded by (E) IgD+ small, mature B cells and positive for (F) CD3 and CXCL13 (inset,
15 #15). G and H, H&E sections showing features of (G) angioimmunoblastic T-cell lymphoma
16 in the first episode then relapsed as (H) PTCL-F in patient #15. I, FISH for the detection of
17 the t(5;9)/*ITK-SYK*. Separate green and red signals for *ITK* (left panel) and *SYK* (right panel)
18 demonstrate rearrangements of the genes in a t(5;9)/*ITK-SYK* positive patient (#5-1st).
19 (Original magnification A and D x2.5; B, C, E, and F, x10; G, and H, x25; A inset, C inset, D
20 inset, and F inset, x40).
21
22
23
24
25
26
27
28
29
30
31
32
33
34
35
36
37
38
39
40
41
42
43
44
45
46
47
48
49
50
51
52
53
54
55
56
57
58
59
60
61
62
63
64
65

REFERENCES

1. Attygalle A, Al-Jehani R, Diss TC, et al. Neoplastic T cells in angioimmunoblastic T-cell lymphoma express CD10. *Blood*. 2002;99:627-633.
2. Attygalle AD, Chuang SS, Diss TC, et al. Distinguishing angioimmunoblastic T-cell lymphoma from peripheral T-cell lymphoma, unspecified, using morphology, immunophenotype and molecular genetics. *Histopathology*. 2007;50:498-508.
3. Bacon CM, Paterson JC, Liu H, et al. Peripheral T-cell lymphoma with a follicular growth pattern: derivation from follicular helper T cells and relationship to angioimmunoblastic T-cell lymphoma. *Br J Haematol*. 2008, published online on August 22 2008, as DOI 10.1111/j.1365-2141.2008.07352.x..
4. Bolen JB, Brugge JS. Leukocyte protein tyrosine kinases: potential targets for drug discovery. *Annu Rev Immunol*. 1997;15:371-404.
5. Breitfeld D, Ohl L, Kremmer E, et al. Follicular B helper T cells express CXC chemokine receptor 5, localize to B cell follicles, and support immunoglobulin production. *J Exp Med*. 2000;192:1545-1552.
6. Chtanova T, Newton R, Liu SM, et al. Identification of T cell-restricted genes, and signatures for different T cell responses, using a comprehensive collection of microarray datasets. *J Immunol*. 2005;175:7837-7847.
7. de Leval L, Rickman DS, Thielen C, et al. The gene expression profile of nodal peripheral T-cell lymphoma demonstrates a molecular link between angioimmunoblastic T-cell lymphoma (AITL) and follicular helper T (TFH) cells. *Blood*. 2007;109:4952-4963.
8. de Leval L, Savilo E, Longtine J, et al. Peripheral T-cell lymphoma with follicular involvement and a CD4+/bcl-6+ phenotype. *Am J Surg Pathol*. 2001;25:395-400.
9. Dorfman DM, Brown JA, Shahsafaei A, et al. Programmed death-1 (PD-1) is a marker of germinal center-associated T cells and angioimmunoblastic T-cell lymphoma. *Am J Surg Pathol*. 2006;30:802-810.
10. Dunleavy K, Wilson WH, Jaffe ES. Angioimmunoblastic T cell lymphoma: pathobiological insights and clinical implications. *Curr Opin Hematol*. 2007;14:348-353.
11. Dupuis J, Boye K, Martin N, et al. Expression of CXCL13 by neoplastic cells in angioimmunoblastic T-cell lymphoma (AITL): a new diagnostic marker providing evidence that AITL derives from follicular helper T cells. *Am J Surg Pathol*. 2006;30:490-494.
12. Feldman AL, Sun DX, Law ME, et al. Overexpression of Syk tyrosine kinase in peripheral T-cell lymphomas. *Leukemia*. 2008;22:1139-1143.
13. Geissinger E, Bonzheim I, Krenacs L, et al. Nodal peripheral T-cell lymphomas correspond to distinct mature T-cell populations. *J Pathol*. 2006;210:172-180.
14. Grogg KL, Attygalle AD, Macon WR, et al. Expression of CXCL13, a chemokine highly upregulated in germinal center T-helper cells, distinguishes angioimmunoblastic T-cell lymphoma from peripheral T-cell lymphoma, unspecified. *Mod Pathol*. 2006;19:1101-1107.
15. Hatano B, Fukushima T, Honda M, et al. Peripheral T-cell lymphoma with a nodular growth pattern. *Pathol Int*. 2002;52:400-405.
16. Ikonomou IM, Tierens A, Troen G, et al. Peripheral T-cell lymphoma with involvement of the expanded mantle zone. *Virchows Arch*. 2006;449:78-87.
17. Jaffe ES. Pathobiology of peripheral T-cell lymphomas. *Hematology Am Soc Hematol Educ Program*. 2006:317-322.
18. Jiang L, Jones D, Medeiros LJ, et al. Peripheral T-cell lymphoma with a "follicular" pattern and the perifollicular sinus phenotype. *Am J Clin Pathol*. 2005;123:448-455.
19. Kanavaros P, Lescs MC, Briere J, et al. Nasal T-cell lymphoma: a clinicopathologic entity associated with peculiar phenotype and with Epstein-Barr virus. *Blood*. 1993;81:2688-2695.

- 1
2
3
4 20. King C, Tangye SG, Mackay CR. T follicular helper (TFH) cells in normal and
5 dysregulated immune responses. *Annu Rev Immunol*. 2008;26:741-766.
- 6 21. Krenacs L, Schaerli P, Kis G, et al. Phenotype of neoplastic cells in
7 angioimmunoblastic T-cell lymphoma is consistent with activated follicular B helper T cells.
8 *Blood*. 2006;108:1110-1111.
- 9 22. Kuno Y, Abe A, Emi N, et al. Constitutive kinase activation of the TEL-Syk fusion
10 gene in myelodysplastic syndrome with t(9;12)(q22;p12). *Blood*. 2001;97:1050-1055.
- 11 23. Macon WR, Williams ME, Greer JP, et al. Paracortical nodular T-cell lymphoma.
12 Identification of an unusual variant of peripheral T-cell lymphoma. *Am J Surg Pathol*.
13 1995;19:297-303.
- 14 24. Marafioti T, Ballabio E, Paterson JC, et al. ICOS is expressed in follicular helper T
15 cells and in angioimmunoblastic T-cell lymphoma (abstract). *J Hematopathol*. 2008;1:205.
16 Abstract 72.
- 17 25. Mourad N, Mounier N, Brière J, et al. Clinical, biologic, and pathologic features in
18 157 patients with angioimmunoblastic T-cell lymphoma treated within the Groupe d'Etude
19 des Lymphomes de l'Adulte (GELA) trials. *Blood*. 2008;111:4463-4470.
- 20 26. Nam-Cha SH, Roncador G, Sanchez-Verde L, et al. PD-1, a follicular T-cell marker
21 useful for recognizing nodular lymphocyte-predominant Hodgkin lymphoma. *Am J Surg*
22 *Pathol*. 2008;32:1252-1257.
- 23 27. Piccaluga PP, Agostinelli C, Califano A, et al. Gene expression analysis of
24 angioimmunoblastic lymphoma indicates derivation from T follicular helper cells and
25 vascular endothelial growth factor deregulation. *Cancer Res*. 2007;67:10703-10710.
- 26 28. Piccaluga PP, Agostinelli C, Califano A, et al. Gene expression analysis of peripheral
27 T cell lymphoma, unspecified, reveals distinct profiles and new potential therapeutic targets. *J*
28 *Clin Invest*. 2007;117:823-834.
- 29 29. Qubaja M, Audouin J, Moulin JC, et al. Nodal follicular helper T-cell lymphoma may
30 present with different patterns. A case report. *Hum pathol*. 2008. Available online on August
31 28, 2008, as DOI 101016/j.humpath.2008.05.018.
- 32 30. Rodriguez-Pinilla SM, Atienza L, Murillo C, et al. Peripheral T-cell Lymphoma With
33 Follicular T-cell Markers. *Am J Surg Pathol*. 2008. Prepublished on September 5, 2008, as
34 DOI 101097/PAS0b013e31817f123e.
- 35 31. Roncador G, Garcia Verdes-Montenegro JF, Tedoldi S, et al. Expression of two
36 markers of germinal center T cells (SAP and PD-1) in angioimmunoblastic T-cell lymphoma.
37 *Haematologica*. 2007;92:1059-1066.
- 38 32. Rudiger T, Ichinohasama R, Ott MM, et al. Peripheral T-cell lymphoma with distinct
39 perifollicular growth pattern: a distinct subtype of T-cell lymphoma? *Am J Surg Pathol*.
40 2000;24:117-122.
- 41 33. Schaerli P, Willmann K, Lang AB, et al. CXC chemokine receptor 5 expression
42 defines follicular homing T cells with B cell helper function. *J Exp Med*. 2000;192:1553-
43 1562.
- 44 34. Starkey CR, Corn AI, Porensky RS, et al. Peripheral T-cell lymphoma with extensive
45 dendritic cell network mimicking follicular dendritic cell tumor: a case report with pathologic,
46 immunophenotypic, and molecular findings. *Am J Clin Pathol*. 2006;126:230-234.
- 47 35. Streubel B, Vinatzer U, Willheim M, et al. Novel t(5;9)(q33;q22) fuses ITK to SYK in
48 unspecified peripheral T-cell lymphoma. *Leukemia*. 2006;20:313-318.
- 49 36. Swerdlow SH, Campo E, Harris NL, et al. *WHO classification of tumours of the*
50 *haematopoietic and lymphoid tissues*. Lyon: International Agency of Research on Cancer
51 (IARC); 2008.
- 52
53
54
55
56
57
58
59
60
61
62
63
64
65

- 1
2
3
4 37. Theodorou I, Bigorgne C, Delfau MH, et al. VJ rearrangements of the TCR gamma
5 locus in peripheral T-cell lymphomas: analysis by polymerase chain reaction and denaturing
6 gradient gel electrophoresis. *J Pathol.* 1996;178:303-310.
- 7 38. Theodorou I, Delfau-Larue MH, Bigorgne C, et al. Cutaneous T-cell infiltrates:
8 analysis of T-cell receptor gamma gene rearrangement by polymerase chain reaction and
9 denaturing gradient gel electrophoresis. *Blood.* 1995;86:305-310.
- 10 39. Uherova P, Ross CW, Finn WG, et al. Peripheral T-cell lymphoma mimicking
11 marginal zone B-cell lymphoma. *Mod Pathol.* 2002;15:420-425.
- 12 40. van den Oord JJ, de Wolf-Peters C, O'Connor NT, et al. Nodular T-cell lymphoma.
13 Report of a case studied with morphologic, immunohistochemical, and DNA hybridization
14 techniques. *Arch Pathol Lab Med.* 1988;112:133-138.
- 15 41. van Dongen JJ, Langerak AW, Bruggemann M, et al. Design and standardization of
16 PCR primers and protocols for detection of clonal immunoglobulin and T-cell receptor gene
17 recombinations in suspect lymphoproliferations: report of the BIOMED-2 Concerted Action
18 BMH4-CT98-3936. *Leukemia.* 2003;17:2257-2317.
- 19 42. Vinuesa CG, Tangye SG, Moser B, et al. Follicular B helper T cells in antibody
20 responses and autoimmunity. *Nat Rev Immunol.* 2005;5:853-865.
- 21 43. Warnke RA, Jones D, Hsi ED. Morphologic and immunophenotypic variants of nodal
22 T-cell lymphomas and T-cell lymphoma mimics. *Am J Clin Pathol.* 2007;127:511-527.
- 23 44. Weiss LM, Jaffe ES, Liu XF, et al. Detection and localization of Epstein-Barr viral
24 genomes in angioimmunoblastic lymphadenopathy and angioimmunoblastic
25 lymphadenopathy-like lymphoma. *Blood.* 1992;79:1789-1795.
- 26 45. Yang WC, Collette Y, Nunes JA, et al. Tec kinases: a family with multiple roles in
27 immunity. *Immunity.* 2000;12:373-382.
- 28 46. Yu P, Wang Y, Chin RK, et al. B cells control the migration of a subset of dendritic
29 cells into B cell follicles via CXC chemokine ligand 13 in a lymphotoxin-dependent fashion.
30 *J Immunol.* 2002;168:5117-5123.
- 31
32
33
34
35
36
37
38
39
40
41
42
43
44
45
46
47
48
49
50
51
52
53
54
55
56
57
58
59
60
61
62
63
64
65

Table 1. Summary of predominant histology, immunophenotype, clonality, and t(5;9) in patients with first diagnosis of PTCL-F.

Patient no.	Age/sex	Biopsy site	CD4	CD10	BCL6	CXCL13	PD-1	ICOS	EBV*	Clonality	t(5;9)
1	60/F	LN	+	+	NI	+	+	NI	+		-
2	74/F	LN	+	+	+		+		+		-
3	78/M	LN	+	-	NI	+	+	+	+		NI
4	86/M	LN	+	-	+	+	+				-
5	79/F	LN	+	+	-	+	+	+	+	+	+
6	51/M	LN	+	+	+	+	+	+		+	+
7	77/M	LN	+	-	-	-	+	+			
8	62/M	LN		+	+	+	+			+	
9	69/F	Nasopharynx				-			+	+	
10	45/M	LN	+	+		-	+		-	+	-
11	88/F	LN	+	+	+	NI			-	NI	
12	45/M	LN	+	+	+				+	+	-
13	81/M	LN	+	-		+	+	+	+	-	-
14	77/F	LN	+	+	+	+	+	+			-
15	64/F	LN	+	+		+	+		+	+	-
16	81/M	Nasopharynx	+	+		+	+	+	+	+	-
17	71/F	LN	+	+	+	+	+		+		
18	54/F	LN	+	+	+	+	+		+		-
19	70/M	LN	+	-	-	-	+		-		-
20	80/F	LN	+	+	+	+	+		+		+
21	65/F	LN	+	+	+	+	+			+	-
22	72/M	LN	+	+	+	+	+	+	-	+	-
23	45/F	LN	-	-	-	+	+	+		+	-
24	74/F	LN	-	+		+	+		-		-
25	33/M	LN	-	-	+	+	+	NI		-	-
26	72/M	LN	+	-		+	+		NI		-
27	55/M	LN	+	+	-	+	+	+		+	+
28	71/F	LN	+	+		+	+	+		+	-
29	50/M	LN	+	+	+	+	+		+		-†

Patient no.	Age/sex	Biopsy site	CD4	CD10	BCL6	CXCL13	PD-1	ICOS	EBV*	Clonality	t(5;9)
30	45/M	LN		+		+	+		-	+	

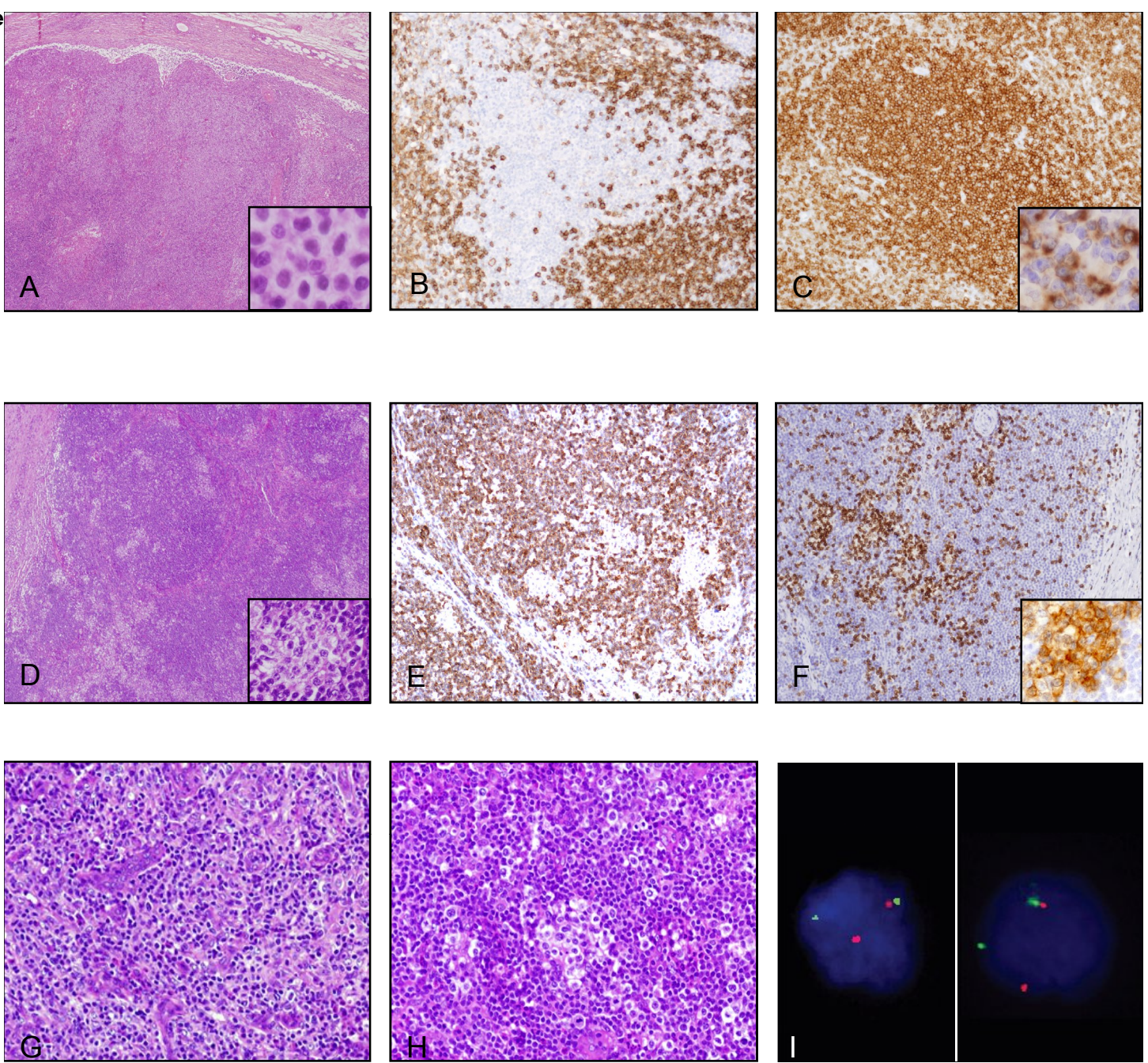
*: defined as the presence of scattered EBV-infected cells positive for LMP-1 and/or EBER in situ hybridization, reminiscent of CD20+ B immunoblasts, †: by conventional cytogenetic study, LN: lymph node, NI: non-interpretable.

Table 2. Summary of clinical, histological, immunophenotypic and cytogenetic features in patients with consecutive biopsies.

Patient no.	Years to recur	Pattern	Site of biopsy	B symptoms	Skin rash	Multiple lymphadenopathies	Stage	Hyper-gammaglobulinemia	Coombs' test	CD10	BCL6	EBV*	CXCL13	ICOS	PD-1	t(5;9)
4	0	AITL	Skin													
4	3	PTCL-F	LN				IV			-	+		+		+	-
5	0	PTCL-F	LN	-		+	IV	-		+	-	+	+	+	+	+
5	4	AITL		-		-	II	-		-		+	+		+	+
8	0	AITL	LN	+	+	+	III	+	+	+	+		+		+	
8	8	PTCL-F	LN	-	-	+		-	+	+	+		+		+	
8	9	PTCL-u		-	-	-		-		+			+		+	
12	0	PTCL-F	LN	+	-	+				+	+	+				
12	14	AITL								+		-			+	-
13	0	PTCL-F	LN	-	+	+	II	-		-		+	+	+	+	-
13	1	AITL	Skin													
15	0	AITL	LN	-	+	+	IV	+		+		+				
15	2	PTCL-F	LN	-		+	II	-	+	+		+	+		+	-
30	0	AITL	LN	+	-	+	III	-		+	+	-	+		+	
30	2	PTCL-F	LN													
30	8	AITL		+	-	+	IV	+	+	+		-				
30	8	PTCL-F	LN	+	+	+	IV	-		+		-	+		+	
30	13	AITL	LN	+	+	+	IV	-		+			+		+	

*: defined as the presence of scattered EBV-infected cells positive for LMP-1 and/or EBER ISH, reminiscent of CD20+ B immunoblasts, AITL: angioimmunoblastic T-cell lymphoma, LN: lymph node, PTCL-F / AITL: T-cell lymphoma showing features of PTCL-F associated with areas reminiscent of AITL, PTCL-u: peripheral T-cell lymphoma unspecified.

Figure



This piece of the submission is being sent via mail.