

# Pertinence of apoptosis markers for the improvement of *in vitro* fertilization (IVF)

D.Haouzi<sup>a,b,c,d,\*</sup>, S.Hamamah<sup>a,b,c,d,e</sup>

<sup>a</sup> CHU de Montpellier, Institut de recherche en biothérapie, hôpital Saint-Éloi, 80 avenue  
Augustin-Fliche, F-34295 Montpellier cedex 5, France;

<sup>b</sup> CHU Montpellier, ART/PGD Division, Département de Médecine et Biologie de la  
Reproduction, hôpital Arnaud-de-Villeneuve,  
371 avenue du Doyen-Gaston-Giraud, F-34295 Montpellier cedex 5, France;

<sup>c</sup> Inserm, U847, Montpellier, F-34 000 France ;

<sup>d</sup> Université Montpellier 1, UFR de Médecine, Laboratoire 'Développement embryonnaire  
précoce et cellules souches embryonnaires humaines', Montpellier, F-34000 France.

Running title: Apoptotic markers in ART

<sup>e</sup> Corresponding author

Pr. Samir Hamamah

Département de Médecine et Biologie de la Reproduction, Hôpital Arnaud de Villeneuve  
34295 Montpellier, France

Tél : 04 67 33 64 04

Fax : 04 67 33 62 90

Mail: [s-hamamah@chu-montpellier.fr](mailto:s-hamamah@chu-montpellier.fr)

## Abstract

In assisted reproductive technology (ART), the pregnancy and birth rates following *in vitro* fertilization (IVF) attempts are still low. Recently, apoptotic markers have been suggested as new criteria for oocyte and embryo quality selection. Many studies have provided evidence that poor oocyte and embryo quality can be associated with apoptosis. The aim of this review is to summarize our current knowledge on the apoptotic process in oocytes and embryos, and focus on the possibility for using apoptotic markers as a reliable and predictive marker to select competent oocytes and embryos during IVF. Moreover, it is currently accepted that IVF failures, linked to poor embryo quality, are, in part, associated with suboptimal *in vitro* culture conditions. Here, we also review the current state of knowledge concerning how the genetic control of apoptosis during folliculogenesis and pre-implantation embryonic development is affected by *in vitro* culture conditions during IVF. In the future, identification of apoptotic markers in ART for oocyte and embryo selection should result in the development of new agonistic or antagonistic molecules of apoptosis by medicinal chemistry.

Keywords: IVF, Apoptosis markers, Genetic control, Oocyte, Embryo, Microenvironment, Diagnosis

## I – Introduction

Infertility is a public health issue affecting some 60 000 reproductive-age couples every year in France. Female infertility represents 60 % of these cases. *In vitro* fertilization (IVF) is a possible solution for many of these couples. Despite the enormous progress made in IVF, many couples, however, are subject to repeated IVF failure and birth rates following IVF are still little more than 15 % per initiated cycle [1]. Though the reasons for this are both subtle and complex, poor quality of the embryos, that is itself conditioned by poor quality of the gametes, is obviously an important criterion. Many studies have provided evidence that poor embryo quality and bad grade (III or IV) can be associated with apoptosis [2, 3]. Although apoptosis might be induced, or facilitated, on account of the sub-optimal *in vitro* culture condition of the embryo, its primary cause could also derive from apoptotic signalling already triggered in the oocyte. Therefore, the possibility of using apoptotic markers as reliable markers to select competent oocytes and embryos, which were hitherto selected by “operator-dependent” evaluation of morphological criteria, opens new perspectives in ART centers.

Here, we review the current state of knowledge concerning the genetic control of apoptosis in the oocyte and embryo as well as how this process is affected by *in vitro* culture conditions.

## II – Apoptosis

Apoptosis is a form of programmed cell death that is indispensable to embryonic development, homeostasis and in the surveillance of aggressions such as infection, uncontrolled cell division or severe cellular damage [4]. During development, cells are produced in excess. Structures specific to each organ are produced by the selective ablation of

certain cells by apoptosis. The number of cells in an organ is therefore finely controlled by an equilibrium between cell proliferation and cell death. The classical example is the morphogenesis of the fingers that involves the apoptotic demise of cells in the inter-digital spaces during embryogenesis. Similarly, the developing nervous system comprises a large excess of neurons, over half of which will be eliminated by apoptosis in order to establish correctly connected neural networks. Development of the reproductive system is no exception; for example the Müllerian ducts that develop into the uterus, the Fallopian tubes and the upper vagina are initially present in both the male and the female foetus, but are lost in the male through apoptosis. Dysregulation of apoptosis is associated with a number of human pathologies, such as Huntington's disease, Alzheimer's disease and AIDS as well as playing a preponderant role in carcinogenesis.

### *II-1- The morphological features of apoptosis*

When cells die by apoptosis, they progressively acquire a characteristic morphology arising from profound changes in structure and function. These changes, that are very different to those observed in necrosis, allow the dying cell to be detached from its neighbours and to be eliminated by phagocytosis. The structural modifications include nuclear and cytoplasmic condensation, the alteration of organelles such as mitochondria and lysosomes and the invagination of the plasma membrane and nuclear envelope [5-7]. Membrane blebbing gives the cell the appearance of a bunch of grapes that can be easily visualised by real-time video microscopy [8]. The sum of these structural modifications leads to the fragmentation of the cell into membrane-bound apoptotic bodies that will be phagocytosed by surrounding cells [5, 6]. Modification of membrane asymmetry, accompanied by the externalisation of phosphatidylserine (PS), allows the recognition of these apoptotic bodies by phagocytic cells.

1 It is possible to use a specific ligand of PS, annexin V, to detect and quantify apoptotic cells  
2 by immunofluorescence and flow cytometry (Fig. 1) [9]. The apoptotic process also involves  
3 the fragmentation of DNA by endonucleases. Genomic DNA is preferentially cleaved in the  
4 internucleosomal regions leading to fragments of DNA with sizes that are multiples of 200  
5 base pairs. These fragments can be separated by agarose gel electrophoresis giving a  
6 characteristic ladder pattern. The fragmented DNA can also be detected by the histochemical  
7 labelling of the free 3'OH ends created by the endonucleases using a technique called TUNEL  
8 (Terminal deoxynucleotidyl Transferase-mediated dUTP-biotin Nick End Labelling) [10-12].  
9

## 10 *II-2- Apoptotic Genes*

11

12 Two complementary approaches, biochemical analysis and genetical analysis of simple model  
13 organisms (notably *C. elegans* and *D. melanogaster*), have been particularly fruitful in the  
14 description of apoptosis, which is the most abundant and best studied of the cell death  
15 mechanisms [13, 4]. The core enzymatic machinery of apoptosis is composed of a family of  
16 cysteine proteases called caspases. To date, 14 caspases have been identified in man; though it  
17 is probable that this list is not exhaustive [14–18]. Caspases are omnipresent in the form of  
18 zymogens, the activation of which is subject to a number of regulatory mechanisms [14–18].  
19 Members of the Bcl2 and IAP (Inhibitor of Apoptosis) families of proteins are fundamental  
20 elements in the pathways that control apoptosis [19-21]. Two major pathways regulate  
21 apoptosis (Fig. 2). The extrinsic pathway is activated by the binding of ligands to membrane-  
22 bound death receptors of the TNFR family [22]. The intrinsic pathway involves a plethora of  
23 signals that converge on the mitochondria *via* the pro- and the anti- apoptotic members of the  
24 Bcl2 family [19-23]. The extrinsic pathway links into the intrinsic pathway *via* a pro-  
25 apoptotic Bcl2-family protein, Bid [24].

Apoptotic phenomena have been described in the blastocyst and, more recently, throughout the development of the pre-implantation embryo [25, 26]. The development of the embryos could well depend on an equilibrium between cellular proliferation and apoptosis. Accumulating data indicate that sub-optimal *in vitro* culture conditions severely affect the survival of the embryos. However, it is also highly probable that the poor quality of the fertilized oocytes, that are already apoptotically compromised, is a major factor in embryonic survival. This underlines the considerable importance of studying the genetic control of apoptosis in both the gametes and the pre-implantation embryos.

### III – Oocyte apoptosis

#### *III-1- During the foetal period*

The definitive stock of primordial follicles, that will ultimately enter into the follicular growth phase, during adult life, is established during foetal oogenesis. More than 90 % of germinal cells present in the foetus at mid-gestation will have disappeared by birth. Experimental results from animal models confirm that this loss of germinal cells occurs through apoptosis during gonad mitosis, prophase of meiosis I and primordial follicle formation. Apoptotic cells have been identified, by *in situ* labelling, both in man [27, 28] and in the mouse [29]. Owing to the limits imposed on the exploitation of human tissue samples, most available data derive from experiments with other animal species. The invalidation of genes in the mouse, especially members of the Bcl2 family and the caspases, have been invaluable in establishing their key roles in oocyte and follicular apoptosis [30, 31]. The implication of these pathways in the regulation of germ-cell number in the human foetal ovary has largely been established using immunolocalisation techniques. Thus, certain members of the Bcl2 family of proteins,

such as the anti-apoptotic Bcl2 and Mcl1 and the pro-apoptotic Bax [28, 32] in addition to caspases 2, 3, 7, 8 and 9 have all been detected [33, 34]. The presence of cleaved, active, forms of the initiator caspases 8 and 9 and executioner caspases 2 and 7 have been confirmed by western blotting; although this is not the case for caspase 3, one of the best characterised executioner caspases [33]. The presence of activated caspase 3 has been observed, however, by immunohistochemistry in all species tested. The number of germinal cells expressing active caspase 3 increases between the 14<sup>th</sup> and 19<sup>th</sup> weeks of gestation, but then falls to zero in primordial follicles in both human [33] and mouse [34]. The invalidation of the caspase 3 gene in the mouse suggests that this protease is primordial in the apoptosis of granulosa cells, but not in germinal cells, during ovarian development [35, 36]. In contrast, the inactivation of the caspase 2 or Bax genes, in the mouse, leads to a dramatic increase in the number of primordial follicles in the post-natal ovary [37, 38]. The study of the expression profiles of the actors and regulators of apoptosis, therefore, appears to be crucial in order to define the mechanisms and signalling pathways implicated in this physiological process.

A number of trophic factors, identified in the developing ovary, have been shown to reduce the loss of both human [39] and rodent [40] germinal cells *in vitro*. Although the causes, and the regulation, of this apoptosis are not yet fully understood, recent studies have implicated the tyrosine kinase receptor TrkB whose principal ligands are the neurotrophins BDNF (Bone-Derived Neurotrophic Factor) and NT4 (neurotrophin 4) [41]. TrkB is a so-called dependence receptor that can transmit two opposing signals: a survival signal in the presence of the principal ligands, and an apoptotic signal in their absence. The implication of TrkB has been confirmed by the invalidation of its catalytic activity in the mouse, the use of specific inhibitors in *in vitro* culture of human and mouse ovaries and the localisation of neurotrophin 4 mRNA [41].

### *III-2- In the Adult*

In the adult human ovary, the individual fate of a follicle (growth/ovulation vs atresia) is tightly regulated by a dialogue of death and survival signalling, including both endocrine factors (gonadotropins) and paracrine factors (e.g. GDF9, BMP15). Only a small proportion of the primordial follicles present at birth progress to ovulation, the others die by apoptosis during the regulated process of follicular atresia.

Two types of follicular atresia can be distinguished. Basal atresia principally affects reserve follicles as they start to grow. This type of atresia, that is observed throughout reproductive life, and that is independent of the menstrual cycle, is characterised by the premature involution of the oocyte and by mild nuclear fragmentation in the granulosa cells [36]. Preantral follicles, and follicles at the start of antrum, show high levels of atresia ( $\approx 30\%$ ), whereas follicles between the sizes of 0.5 and 2 mm show lower levels ( $\approx 15\%$ ). In addition to this basal atresia, larger follicles ( $> 2$  mm) are subjected to cyclic atresia. This type of atresia starts with high levels of nuclear fragmentation in granulosa cells, followed by a rapid degeneration of the oocyte. The highest levels of atresia are observed in the mid-luteal phase (73 % for 2 – 5 mm follicles and 100 % for 6 – 10 mm follicles). A number of studies of human and mouse oocyte quality have reported high levels of DNA fragmentation, as analysed by TUNEL, associated with low fecundity [42-44]. The expression of caspase 3 is greatly increased in pre-ovulatory follicles entering into atresia [45] and activated caspase 3 has been detected not only in the oocyte [34], but also in the granulosa cells of atretic follicles in the mouse ovary [46]. Apoptosis could, therefore, be a means of eliminating defective or fertilization-incompetent oocytes. The description of the apoptotic cascade, as well as its induction and regulation, have, and continue to be, the object of a very large number of



1 studies (Table I). It is probable that the death receptor Fas expressed in the oocytes of  
 2 primordial and primary follicles in the post-natal ovary, is involved in apoptotic signalling  
 3 [43]. Fas ligand (Fas-L) is expressed in oocytes of primary, secondary and tertiary follicles,  
 4 adding weight to the argument that the couple Fas/Fas-L is involved in the regulation of  
 5 oocyte apoptosis [47]. Moreover, the activation of the Fas pathway during oocyte maturation  
 6 *in vitro* increases the incidence of apoptosis of cells of the cumulus oophorus [48] and  
 7 granulosa [49]. In addition, soluble Fas, a truncated form of Fas that acts as an inhibitor of  
 8 Fas-induced apoptosis, is found at high concentration in follicular fluid and in the medium  
 9 bathing the cumulus oophorus/mature oocyte complex [50]. Other factors that induce  
 10 apoptosis have also been incriminated, including cytokines such as TNF- $\alpha$  and IL-6 [51-53].  
 11 These latter may act either by inducing the uncontrolled production of free radicals, or by  
 12 increasing intracellular  $\text{Ca}^{2+}$ , that in turn leads to endonuclease activation, either by activating  
 13 pro-apoptotic genes of the Bcl-2 family (Bax, Bcl<sub>XS</sub>), or by generating second messengers  
 14 such as ceramide that lead to caspase activation [54, 55]. Indeed, the knockout of either Bax  
 15 or caspase 2 leads to a spectacular increase in the number of primordial follicles [57, 37].  
 16 Nevertheless, these apoptotic signals are not present in the developing follicle in normal  
 17 conditions. One theory that could explain this is that cell proliferation activates a default  
 18 apoptotic programme that, unless countered by survival signalling, leads to the inexorable  
 19 demise of the cell. Here, the principal survival signal is Follicle-Stimulating Hormone (FSH)  
 20 that is prerequisite to the survival of post-antral stage follicles. FSH both inhibits the  
 21 expression of pro-apoptotic genes of the Bcl2 family (Bax and Bcl<sub>XS</sub>) and stimulates the  
 22 production of growth factors, such as EGF, TGF $\alpha$ , bFGF and the IGFs, that have a positive  
 23 effect on the oxidative stress response. In addition, when small antral follicles from rat are  
 24 cultured in the presence of FSH, they show increased follicular growth, reduced apoptosis and  
 25 an increased expression of XIAP (X-linked Inhibitor of Apoptosis) [58]. Originally identified

1 in baculovirus, the IAPs are a family of survival proteins that regulate cell fate by modulating  
2 post-mitochondrial apoptotic signalling. Several members have been identified in man,  
3 including XIAP [59]. A causal relationship between XIAP and apoptosis has been confirmed  
4 by the fact that inhibition of its expression induces apoptosis and represses follicular  
5 development, even in the presence of FSH. XIAP would, therefore, seem to play a key role in  
6 FSH-stimulated follicular development. We have recently demonstrated, by transcriptome  
7 analysis, that oocytes also strongly express two other anti-apoptotic factors, Bcl2L10/DIVA  
8 and survivin (another member of the IAP family), as well as a pro-apoptotic factor (BNIP1)  
9 [60]. The equilibrium between these pro- and anti- apoptotic factors may contribute to the  
10 regulation of oocyte apoptosis in the adult.

11 It is interesting to note that, contrary to the well established anti-apoptotic role of  
12 gonadotropins during early antral follicle development, Luteinizing Hormone (LH) and FSH  
13 stimulate caspase 3 and caspase 7 activities in *in vitro* cultures of rat pre-ovulatory follicles,  
14 potentialising apoptosis in theca cells but not granulosa cells [61]. This strongly suggests that  
15 apoptosis of theca cells is a physiological process that is necessary for gonadotropin-induced  
16 ovulation [62].

17 Although the growing body of literature that has been generated over the past few years has  
18 permitted the identification of the major actors regulating apoptotic signalling in oocytes, the  
19 reason that it should occur at all remains a mystery. A number of hypotheses might be  
20 suggested, such as the selection of oocytes prior to ovulation or the surveillance of their  
21 genomic integrity.

#### 23 **IV - Apoptosis in early stage of embryos development**

24

1 The term early embryo stages refers to the developing from the zygote (resulting from the  
2 fertilization of the oocyte) to the moment that it implants in the uterus, at the blastocyst  
3 stages, and establishes an intense molecular dialogue with the maternal tissues. Indeed, during  
4 this period, zygote migrates along the genital tract to the uterus and the embryo undergoes  
5 important developmental stages and cellular differentiation. The apoptotic phenomena,  
6 observed throughout the development of the pre-implantation embryo, are necessary for the  
7 elimination of genetically abnormal or mutated cells [3]. The degree of apoptosis, that is  
8 particularly elevated at the blastocyst stage, however, cannot exceed a certain threshold  
9 without leading to the collapse of embryonic homeostasis and developmental arrest. Despite  
10 this “natural selection” during the pre-implantation stages, there is still a substantial loss  
11 (estimated at 20 to 25 % *in vivo*) on account of defective implantation [63].

12 The critical phase of implantation process, occurring between the sixth and the fifteenth day  
13 post fertilization, has been little studied because of difficulties encountered in the culture of  
14 human embryos from these stages of development. Despite efforts to improve the culture  
15 conditions (reduced glucose concentration, amino-acid supplements, growth factors in the  
16 culture medium, controlled hypoxia) of early stages of *in vitro* embryo culture, only 20 – 40%  
17 of embryos reach the blastocyst stage after 5 – 6 days post fertilization, and very few of these  
18 have the morphological characteristics of implantation-stage embryos.

19 Embryos are selected essentially on the basis of morphological criteria: number and regularity  
20 of blastomeres, rate of development, and embryonic fragmentation percentage [64, 65] (Fig.  
21 **3**). The low implantation rate of embryos aged between 2 and 3 days (10 – 12 %) might be  
22 explained by uterine hyper-motricity and the inappropriate timing of transfer. Indeed, these  
23 embryos are placed in an unsuitable environment because, *in vivo*, they would still be in the  
24 Fallopian tubes, and would not reach the uterus until the blastocyst stage *i.e.* 5 to 6 days post  
25 fertilisation. This is one of the reasons that have led to the *in vitro* culture of embryos up to

the blastocyst stage. In addition to synchronising the embryo to the endometrium, the prolonged culture *in vitro* also allows the selection of the most competent embryos, with the highest developmental potential, and the elimination of those that are blocked at a stage corresponding to genomic activation (6 – 8 cell stage, D3 post-insemination). Thus, most IVF teams transfer 1 or 2 embryos at the blastocyst stage and achieved better pregnancy success rates per blastocyst compared to embryo transfer on day 2 or 3 [66]. In many embryos, the embryonic genome is not activated and they remain blocked at the 4 – 8 cell stage. Arrested development at this stage is possibly due to genetic factors, apoptosis, maternal age or paternal genome.

In addition, around two-thirds of the embryos obtained show cellular fragmentation > 15%. This fragmentation is observed in both *in vivo* and *in vitro* fertilized embryos [63, 2]. The origin, the role and the mechanism of this fragmentation remain to be clarified. However, there is now little doubt that it does affect embryonic development. Indeed, a number of studies have highlighted a negative correlation between the degree of fragmentation and development to the blastocyst stage; excessive fragmentation being associated with diminished embryonic viability and a low implantation rate [67]. Several hypotheses have been proposed to explain the negative effect of fragmentation on pre-implantation embryonic development. First, the fragments could physically disrupt cell-cell interactions, interfering with embryonic development, especially during compaction, cavitation and blastocyst formation [68, 69]. Secondly, the fragments could reduce the cytoplasmic volume, depleting essential organelles or polarised domains that are indispensable for correct development [70]. Thirdly, ultrastructural analysis reveals that blastomeres that are adjacent to fragments show signs of degeneration; probably due to the liberation of toxic substances by the fragments [71, 2].

1 On account of the resemblance of these fragments to apoptotic bodies, a number of groups  
2 have taken an interest in the role of apoptosis during the development of pre-implantation  
3 embryos cultured *in vitro* [72]. It is probable that the activation of apoptosis in human pre-  
4 implantation embryos prevents the transmission of damaged DNA. This apoptosis is  
5 preponderant after compaction, mainly at the morula and blastocyst stages, initially amongst  
6 the embryonic stem cells (cells of the inner mass) and later throughout the foetus [70]. In  
7 embryos with low, or no, fragmentation, 7 – 8% of the cells of the inner mass undergo  
8 apoptosis. Two hypotheses have been proposed. In the first hypothesis, the number of cells in  
9 the inner mass of the developing blastocyst is maintained at equilibrium by regulated  
10 proliferation and cell death [73]. The fact that embryos with a low morphological quality, and  
11 a reduced number of cells in the inner mass, have a lower rate of apoptosis than embryos that  
12 are morphologically perfect argues in favour of a role for apoptosis in the maintenance of  
13 cellular homeostasis. The second hypothesis proposes that, in the developing foetus, apoptosis  
14 eliminates cells with an altered genome. Indeed, aneuploid cells can appear in the inner mass.  
15 Until recently, these fragments were thought to be structures that are independent of the  
16 blastomeres, and simply derived from the mass of embryonic cells. This notion, however, is  
17 currently under debate. Several studies have reported a fragmentation of blastomeres as well  
18 as trophoectodermal cells [74, 75]. Importantly, a recent study has shown that severe  
19 fragmentation, equivalent to the loss of at least one blastomere, at two days post fertilization,  
20 is associated with a drastic decrease in the rate of formation of blastocysts at six days post  
21 fertilization (12% vs 60 % in non-fragmented embryos) [76].  
22 Human early embryos that are marked by an excessive fragmentation on day 6 post  
23 fertilization, or that have an arrested development, display a high proportion of cells  
24 undergoing apoptosis (over 15 % of the cells), characterized by cytoplasmic and nuclear  
25 fragmentation, condensed chromatin, fragmented DNA and phagocytosis. These

characteristics have been observed for the most part by classical microscopy techniques and have not been confirmed by biochemical markers such as TUNEL or annexin V binding [70, 77, 78]. Whether embryonic fragmentation is associated with the activation of an apoptotic cascade is, therefore, a valid question. The ratio of the expression of transcripts of pro-apoptotic (Bak, Bax, Bid, Bik, Bad) and anti-apoptotic (Bcl2, Bcl<sub>XL</sub>, Mcl1, Bclw) members of the Bcl2 family is invariable throughout normal embryonic development in both man and mouse (Table I) [79, 80]. At the protein level, only Bax is constitutively present, the other members of the family show variable expression levels throughout development, with some data in the literature being contradictory [80, 81]. Bcl2 expression, however, appears to be restricted to specific cells of the inner mass, whereas Bax is localised in the cytoplasm of the blastomeres, the cells of the inner mass and the trophectodermal cells. Similarly, an increased expression of Bax has been described in human blastocysts with poor quality morphology [72, 75], whilst Bcl2 has been reported to be over-expressed in mouse blastocysts with good morphology as compared to blastocysts with a fragmented morphology [79]. It would appear, therefore, that blastocysts with a high degree of fragmentation are characterised by disequilibrium between pro- and anti-apoptotic members of the Bcl2 family of proteins [79, 72, 82]. Caspase 2 and 3 transcripts are detectable at all developmental stages of the human pre-implantation embryo [82, 76]. Increased caspase 3 activity, as well as increased expression of Harakiri, a pro-apoptotic protein of the Bcl2 family, has been reported in fragmented embryos as of the 4-cell stage [76].

Finally, survivin, a member of the IAP family, plays a key role in embryonic development. Survivin is highly expressed throughout embryonic life and is absent from differentiated tissues. It is re-expressed, however, in most common cancers and in tumour-derived cell lines [83]. The anti-apoptotic function of this protein is associated with its capacity to bind certain caspases (especially caspases 3, 7 and 9). Recently, alternative transcripts have been shown to

1 give rise to proteins with different (and sometimes opposing) apoptotic or anti-apoptotic  
2 effects [84]. Survivin appears to act during mitosis. It associates with the mitotic spindle and  
3 appears to be regulated by the absence of tension at the kinetochores. Transgenic embryos,  
4 lacking survivin expression, die *in utero* from massive apoptosis [85]. Similarly, down  
5 regulation of survivin expression, by antisense RNA, provokes metaphase arrest and various  
6 anomalies, depending on the model studied. In the early mouse embryo this is translated by  
7 developmental arrest at the morula or blastocyst stage, followed by apoptosis [86]. In addition  
8 this apoptosis can be inhibited by inhibitors of caspases 3 and 9. Survivin is, therefore, an  
9 essential anti-apoptotic gene, that is expressed throughout all stages of development of the  
10 human pre-implantation embryo and that can protect embryos from apoptosis by inhibiting  
11 apoptotic pathways implicating caspases.

12 Despite some controversy over the role of apoptosis in inducing fragmentation, the altered  
13 expression of apoptotic regulatory proteins does seem to be linked to embryonic viability.

## 15 **V- Micro-environment and apoptotic signalling**

17 We have described above the state of our knowledge concerning the genetic control of  
18 apoptosis in the oocyte and the embryo, and will now examine the consequences of culture  
19 conditions on folliculogenesis and the development of the early embryo development.

20 It is currently accepted that IVF failures, linked to poor embryo quality, are, in part,  
21 associated with suboptimal *in vitro* culture conditions [74, 78]. Apoptosis in early embryos  
22 might be provoked by the lack of maternally derived factors, such as essential growth factors  
23 and cytokines [87-89]. However, the mechanisms that trigger apoptosis in suboptimal *in vitro*  
24 culture conditions have not yet been clearly identified. Ideally, an experimental model should  
25 take into account the three-dimensional (3D) structure of the tissue. Classical cell culture,

1 however, obliges cells to adapt to physical and environmental constraints that are very  
2 different to those encountered *in vivo*. Indeed, cell behaviour has to adapt to the unnatural  
3 rigidity of the support and to the lack of other cells above and below. Within the organism,  
4 cells are organised into tissues and bound to the extracellular matrix that is composed of  
5 molecules such as collagen, fibronectin and laminin. The spatial constraints of 3D cell culture  
6 aim to recreate these conditions, such that the cells correctly perceive and interpret the  
7 biochemical and biophysical cues of the microenvironment; especially those related to their  
8 binding to the extracellular matrix and neighbouring cells and their response to growth factors  
9 [90-93]. In the context of 3D culture, cells conserve the characteristics of a tissue, whilst  
10 remaining amenable to experimentation. The importance of 3D culture is especially crucial in  
11 the study of complex cellular systems, such as epithelia. Indeed the composition of the  
12 extracellular matrix, as well as its topographical organisation are essential elements  
13 contributing to the survival, migration and differentiation of epithelial cells that are otherwise  
14 unable to polarize correctly and differentiate [94]. Epithelial cell polarisation, that depends on  
15 binding to the extracellular matrix, *via* integrins, and to neighbouring cells, *via* adherent and  
16 tight junctions, both affects, and is affected by, intracellular signalling pathways including the  
17 PI(3)K pathway [95, 96]. One of the effectors of this pathway is the serine/threonines kinase,  
18 Akt that constitutes a signalling node that regulates cell survival [97]. The substrates of Akt  
19 include several components of the core apoptotic machinery.

20 In conclusion, an understanding of the molecular mechanisms involved in cell death decisions  
21 necessitates the use of experimental models that recapitulate major aspects of physiological  
22 conditions, such as the extracellular matrix and growth factor composition.

### 24 *V-1- Impact of the microenvironment on folliculogenesis*



### *V-1-1- Culture medium and microenvironment*

A number of studies have highlighted the importance of the culture media employed in *in vitro* maturation, as they affect not only the maturation of the oocytes, but also the subsequent development of the embryo. For instance, the use of basal media (bicarbonate buffered physiological saline containing pyruvate, glucose and lactate) with low concentrations of non-essential amino acids and vitamins, but lacking purine precursors (glutamine, glycine, aspartic acid) and hypoxanthine (responsible for meiotic arrest), and supplemented with human serum seems to significantly increase the survival and maturation of oocytes [98].

For over a decade now embryologists have recognized the importance of preserving the microenvironment [99]. Follicle culture, for instance, has given way to the culture of fragments of ovarian cortex as numerous studies have reported that the growth and development of the oocytes and follicles are better when the integrity of the oocyte/granulosa cell/follicular component interactions is preserved. Indeed, follicle survival is significantly increased when the ovarian tissues are only partially dispersed [100]. In these conditions it is possible to maintain inter-follicular interactions, as well as the action of various factors present in the follicular liquid. However, it is difficult to maintain the three dimensional nature of the tissue *in vitro* and the follicles degenerate after a few days in culture. The culture of follicles or ovarian tissues on a monolayer of extracellular matrix does allow the maintenance of follicular structure over a longer period of time [100], but the culture systems suffer from the lack of extracellular matrix contact on the upper side of the biological sample.

### *V-1-2- Hormones and Growth Factors*

Primordial follicles present in the ovary represent the stock of follicles for the reproductive lifetime. As the follicle is characterised by rapid growth, intense interaction between follicle cells and growth factors, hormones and steroids is necessary in order to transmit elements

1 indispensable for the maturation of the oocyte. Notably, cumulus oophorus cells secrete, in an  
2 FSH dependent manner, glycolytic intermediates (lactate, pyruvate ...) as nutrients for the  
3 germline. Indeed, the oocytes, themselves, have little, or no, glycolytic activity [101] and  
4 increased glycolytic activity in cells of the cumulo-oocyte complex is associated with the  
5 complete maturation of human oocytes *in vitro* [102] (Fig. 4). The hormone FSH is already  
6 used to supplement most culture media used for the maturation of oocytes *in vitro* [102].  
7 Protocols, however, remain to be standardised. Indeed, the concentrations of FSH vary  
8 between laboratories. In certain animal species, treatment with high doses of exogenous  
9 gonadotropins affects the pre-implantation period as well as post implantation development.  
10 Studies of cumulus cells-oocyte complexes *in vitro* have shown that the metabolism of  
11 pyruvate, but not that of glucose, is affected by high doses of FSH. This example highlights  
12 the urgent need to standardise protocols for the *in vitro* maturation of oocytes [102].  
13 The mechanisms permitting the consumption of glucose by cumulus oophorus cells, following  
14 gonadotropic stimulation, is currently well understood and involves the activation of the  
15 PI(3)K/AKT (phosphoinositide-3-kinase/V-akt murine thymoma viral oncogene) [102, 103].  
16 This signalling pathway plays a determining role in the suppression of both spontaneous and  
17 gonadotropin-stimulated meiotic re-entry in oocytes [102]. Indeed, the low levels of Akt  
18 activity found in the cumulus, as well as those observed immediately after the collection of  
19 the oocyte in its follicle, are necessary for meiotic arrest. Increased Akt activity favours the  
20 production of progesterone by the cumulus cells, which in turn favours meiotic resumption  
21 and survival signalling (Fig. 4). The pharmacological inhibition of the PI(3)K pathway,  
22 blocking the activation of Akt, increases caspase-3 activity and the proportion of apoptotic  
23 cells in the cumulus oophorus, and affects meiotic resumption stimulated by porcine oocytes  
24 [104]. The use of basal media for the culture of cumulo-oocyte complexes, however, does not  
25 allow the maintenance of Akt activity, which decreases drastically within a few hours of

1 culture [104]. It is probable that the loss of survival signalling in the cumulus cells-oocyte  
2 complexes provokes the apoptosis of cells in the cumulus oophorus. As interactions between  
3 these cells and the oocytes are necessary for embryonic development, decreases in their  
4 numbers have a negative effect on development rate [105].

5 A number of factors are involved in follicular progression and growth; notably the tyrosine  
6 kinase receptor cKit, that is synthesized by the oocyte, and its ligand, KITL that is present at  
7 the surface of the follicle cells. Mice with naturally occurring KITL mutations form  
8 primordial follicles that are incapable of progressing to the primary follicle stage. All of the  
9 stages from the formation of follicles through their progression up to the secondary follicle  
10 stage are independent of hypophyseal gonadotropins, and are regulated instead by intra-  
11 ovarian paracrine factors. Of these, three are members of the TGF $\beta$  (Transforming Growth  
12 Factor) super family: AMH (Anti-Mullerian Hormone), that appears to drive primordial  
13 follicles into the following stages, GDF9 (Growth Differentiation factor) that is implicated in  
14 stages posterior to the primary follicle and BMP15 (Bone Morphogenetic Protein) that affects  
15 the proliferation of follicle cells [106-110]. GDF9 is expressed very early during follicular  
16 development, and is secreted by oocytes within growing follicles [111]. The addition of  
17 GDF9 to the culture medium enhances survival and follicular progression up to the secondary  
18 follicle stage in cultured ovarian slices [112]. In this same model, other growth factors, such  
19 as IGF-I, IGF-II and insulin have been shown to be oocyte survival factors [113 – 115].

20 Transcriptome studies, along with the completed genome sequences of several species (man,  
21 mouse, cow, pig *etc.*), have led to the identification of novel transcripts expressed in the  
22 developing ovary [116, 117]. This should allow the improvement of ovary and early embryo  
23 culture conditions in the near future.

V-2- *The impact of the microenvironment on the early embryo development*

Studies with mice have demonstrated that *in vitro* culture increases cell death in the embryos to a degree that is dependent upon the culture medium [78, 118]. There is now a good deal of evidence that the cellular microenvironment influences the degree of fragmentation in early embryo stages. For example, embryos cultured on a monolayer of feeder cells (*e.g.* fibroblasts) have a lower degree of fragmentation than those cultured alone [119]. Likewise, embryos cultured in small volumes, or those expressing growth factors and their receptors, have a lower incidence of fragmentation [120, 121]. Thus, in order to take into account nutritional (modification of glucose metabolism) and environmental (passage from the Fallopian tubes to the uterus) changes of the developing embryo *in vivo*, two different culture media are used sequentially in most IVF centers today: one for culture up to the 4-cell stage, the other for culture up to the activation of the genome and compaction. Most mammalian cells cultivated in the absence of serum (or other extracellular signalling molecules), however, undergo apoptosis. In most cell types, the proteins necessary for the execution of the death program are constitutively expressed, but are maintained in an inactive state by extracellular survival signals. Although few data are available concerning the exact composition of the fluid surrounding the embryo *in vivo*, evidence is now accumulating as to the role of growth factors, of both maternal and embryonic origin, in the development of the pre-implantation embryo. Notably, the addition of growth factors, such as TGF- $\alpha$ , IGF-I, or insulin, to the culture medium is beneficial to the development of the embryo, increasing the formation and number of blastocyst cells (60% of embryos at the blastocyst stage in the presence of IGF-I *vs* 35% without IGF-I). In addition, the presence of IGF-I or TGF- $\alpha$  strongly represses the number of apoptotic nuclei in the human blastocyst [72, 98, 118, 89]. Other growth factors,

such as LIF (leukaemia inhibitory factor) and HB-EGF (Heparin Binding EGF) increase blastocyst formation by 24 and 30 % respectively [122, 123]. Further studies will be necessary, however, before these results can be extrapolated in terms of implantation and clinical pregnancy rate.

## **VI- Apoptotic markers and pre-implantation potential**

Taken together, the above review of the literature suggest that apoptotic markers might be of predictive value in the selection of competent oocytes and early embryos of high quality. With this in mind, the results of Malamitsi-Puchner *et al* [49] are of particular interest as they underline the correlation between the level of soluble Fas in the follicular fluid and/or the cumulus cells-oocyte complex with both the morphological quality of the pre-implantation embryos and the clinical pregnancy success rate. Indeed, these authors demonstrate that high soluble Fas levels, in the follicular fluids, are a reflection of oocyte maturity. In addition, low levels of soluble Fas in the cumulus cells-oocyte complex are only observed following fertilization of the oocyte, when the morphology of the pre-implantation embryo is perfect or in the case of a successful clinical pregnancy [49]. However, this study, albeit promising, involved only a small number of patients and needs to be verified on a larger scale in order to confirm the predictive potential, for IVF, of soluble Fas levels in the follicular fluid and/or the cumulus cells-oocyte complex.

Other studies suggest that telomere length in the oocyte is a predictive factor of cytoplasmic fragmentation in the embryo [124]. Telomeres that are too short are known to lead to genomic instability, with unrepairable damage to DNA that can lead to apoptosis, suggesting that shortened telomeres in the oocyte might be responsible for increased apoptosis in the human pre-implantation embryo. However, the inverse correlation between telomere length, as

1 measured by Fluorescent In Situ Hybridization (FISH), and cytoplasmic fragmentation has  
2 only been observed as of the 3<sup>rd</sup> day after fertilization, the moment at which the pre-  
3 implantation embryos are transferred into the uterus [124]. Taking into account the technical  
4 difficulties and complexity (24 to 48 h) of molecular cytogenetic techniques, such as FISH, it  
5 is difficult to envisage that it can be a pertinent diagnostic tool in the evaluation of oocyte and  
6 embryo quality. In addition, recent studies indicate that up to 26 % of FISH analyses  
7 involving oocytes are artefactual [125, 126], introducing an element of doubt as to the  
8 reliability of the technique.

9 Finally, classical apoptotic markers (nuclear fragmentation, annexin 5 labelling, caspase  
10 activation), as described above, do not currently appear to be very promising. Data in the  
11 literature do not yet give a clear indication as to whether embryonic fragmentation is indeed  
12 associated with activation of the apoptotic cascade. Although alterations in the expression of  
13 protein regulators of apoptosis (Bcl-2 family members and IAPs) do appear to be associated  
14 with the viability of embryos, the evidence in the literature remains contradictory [70, 77, 78,  
15 80, 81, 88]. Thus, there is still a need to identify novel markers, especially those involved in  
16 early events within the apoptotic signalling pathways. The identification of a genetic signature  
17 as a reliable way to predict the fertilisability of the oocyte and the quality of its pre-  
18 implantation embryonic development remains a crucial goal. Identifying gene expression  
19 profiles is the first indispensable step in the identification of potential molecular markers of  
20 the expression of abnormal genes in the oocytes and the pre-implantation embryos.

21 Although this type of strategy has already been applied to cumulus cells, oocytes and human  
22 supernumerary embryos [116, 117, 127, 128], the samples were in each case biologically  
23 stimulated or super-ovulated and, therefore, far from being in a physiologically normal  
24 environment. Using a recent technology, laser dissection microscopy, Arrazola *et al* [128]  
25 isolated primordial oocytes from sections of rhesus monkey ovary and uncovered 84 novel

genes implicated in the survival and maturation of oocytes. It is also difficult to draw specific conclusions from such global data and further work will be required to validate the predictive value of the candidate genes in order to develop novel diagnostic genetic tests for oocyte and embryo quality.

## VII- Conclusion and perspectives

Despite much progress in IVF over the past decades, more than 50% of human embryos cultured *in vitro* do not reach the blastocyst stage on account of developmental defaults. This is due, in part, to defective oocyte maturation, for which suboptimal culture conditions are probably a contributing factor. Little is known of the molecular events driving early embryonic development and transcriptome and proteome studies should lead not only to major advances in our understanding of the first week of human life, but also to the identification of pertinent and reliable markers of oocyte and embryo quality.

**Acknowledgments:** We thank the direction of the University-Hospital of Montpellier for support and the ART team for their assistance during this study. Partial financial support for this study was provided by the Ferring pharmaceutical company.

- 1 [1] Hamamah, S. Oocyte and embryo quality: is their morphology a good criterion? *J.*  
2 *Gynecol. Obstet. Biol. Reprod.*, **2005**, 34(7 Pt 2), 5S38-5S41.
- 3 [2] Alikani, M.; Cohen, J.; Tomkin, G.; Garrisi G.J.; Mack, C.; Scott R.T. Human embryo  
4 fragmentation in vitro and its implications for pregnancy and implantation. *Fertil.*  
5 *Steril.*, **1999**, 71(5), 836-842.
- 6 [3] Delimitreva, S.M.; Zhivkova, R.S.; Vatev, I.T.; Toncheva, D.I. Chromosomal  
7 disorders and nuclear and cell destruction in cleaving human embryos. *Int. J. Dev.*  
8 *Biol.*, **2005**, 49(4), 409-416.
- 9 [4] Jacobson, M.D.; Weil, M.; Raff, M.C. Programmed cell death in animal development.  
10 *Cell*, **1997**, 88(3), 347-354.
- 11 [5] Kerr, J.F.; Wyllie, A.H.; Currie, A.R. Apoptosis: A basic biological phenomenon with  
12 wide ranging implications in tissue kinetics. *Br. J. Cancer*, **1972**, 26, 239-257.
- 13 [6] Wyllie, A.H.; Kerr, J.F.; Currie, A.R. Cell death: the significance of apoptosis. *Int.*  
14 *Rev. Cytol.*, **1980**, 68, 251-306.
- 15 [7] Feldmann, G.; Haouzi, D.; Moreau, A.; Durand-Schneider, A.M.; Bringuier, A.;  
16 Berson, A.; Mansouri, A.; Fau, D.; Pessayre, D. Opening of the mitochondrial  
17 permeability transition pore causes matrix expansion and outer membrane rupture in  
18 Fas-mediated hepatic apoptosis in mice. *Hepatology*, **2000**, 31(3), 674-683.
- 19 [8] Evan, G.I.; Wyllie, A.H.; Gilbert, C.S.; Littlewood, T.D.; Land, H.; Brooks, M.;  
20 Waters, C.M.; Penn, L.Z.; Hancock, D.C. Induction of apoptosis in fibroblasts by c-  
21 myc protein. *Cell*, **1992**, 69, 119-128.
- 22 [9] Van Engeland, M.; Nieland, L.J.; Ramaekers, F.C.; Schutte, B.; Reutelingsperger, C.P.  
23 Annexin V-affinity assay: a review on an apoptosis detection system based on  
24 phosphatidylserine exposure. *Cytometry*, **1998**, 31(1), 1-9.



- 1 [10] Gold, R.; Schmied, M.; Rothe, G.; Zischler, H.; Breitschopf, H.; Wekerle, H.;  
2 Laussmann, H. Detection of DNA fragmentation in apoptosis: application of *in situ*  
3 nick translation to cell culture systems and tissue sections. *J. Histochem. Cytochem.*,  
4 **1993**, 41, 1023-1030.
- 5 [11] Migheli, A.; Attanasio, A.; Schiffer, D. Ultrastructural detection of DNA strand breaks  
6 in apoptotic neural cells by *in situ* end-labelling techniques. *J. Pathol.*, **1995**, 176, 27-  
7 35.
- 8 [12] Mundle, S.D.; Gao, X.Z.; Khan, S.; Gregory, S.A.; Preisler, H.D.; Raza, A. Two *in*  
9 *situ* end labeling techniques reveal different patterns of DNA fragmentation during  
10 spontaneous apoptosis *in vivo* and induced apoptosis *in vitro*. *Anticancer Res.*, **1995**,  
11 15, 1895-1904.
- 12 [13] Hengartner, M.O.; Horvitz, H.R. C. elegans cell survival gene ced-9 encodes a  
13 functional homolog of the mammalian proto-oncogene bcl-2. *Cell*, **1994**, 76(4), 665-  
14 676.
- 15 [14] Earnshaw, W.C.; Martins, L.M.; Kaufmann, S.H. Mammalian caspases: structure,  
16 activation, substrates, and functions during apoptosis. *Annu. Rev. Biochem.*, **1999**, 8,  
17 383-424.
- 18 [15] Cohen, G.M. Caspases: the executioners of apoptosis. *Biochem. J.*, **1997**, 326 (Pt1), 1-  
19 16.
- 20 [16] Thornberry, N.A. The caspase family of cysteine proteases. *Br. Med. Bull.*, **1997**,  
21 53(3), 478-490.
- 22 [17] Thornberry, N.A.; Lazebnik, Y. Caspases: enemies within. *Science*, **1998**, 281, 1312-  
23 1316.
- 24 [18] Kumar, S. Caspase function in programmed cell death. *Cell. Death. Differ.*, **2007**,  
25 14(1), 32-43.

- 1 [19] Green, D.R.; Reed, J.C. Mitochondria and apoptosis. *Science*, **1998**, 281(5381), 1309-  
2 1312.
- 3 [20] Mignotte, B.; Vayssiere, J.L. Mitochondria and apoptosis. *Eur. J. Biochem.*, **1998**,  
4 252(1), 1-15.
- 5 [21] Danial, N.N.; Korsmeyer, S.J. Cell death: critical control points. *Cell*, **2004**, 116(2),  
6 205-219.
- 7 [22] Nagata, S.; Suda, T. Fas and Fas ligand: lpr and gld mutations. *Immunol. Today*, **1995**,  
8 16, 39-43.
- 9 [23] Thornberry, N.A.; Bull, H.G.; Calaycay, J.R.; Chapman, K.T.; Howard, A.D.; Kostura,  
10 M.J.; Miller, D.K.; Molineaux, S.M.; Weidner, J.R.; Aunins, J.; et al. A novel  
11 heterodimeric cysteine protease is required for interleukin-1 beta processing in  
12 monocytes. *Nature*, **1992**, 356(6372), 768-774.
- 13 [24] Li, H.; Zhu, H.; Xu, C.J.; Yuan, J. Cleavage of BID by caspase 8 mediates the  
14 mitochondrial damage in the Fas pathway of apoptosis. *Cell*, **1998**, 94(4), 491-501.
- 15 [25] Levy, R. Genetic regulation of preimplantation embryo survival. *Int. Rev. Cytol.*,  
16 **2001**, 210, 1–37.
- 17 [26] Hardy, K.; Spanos, S.; Becker, D.; Iannelli, P.; Winston, R.M.; Stark, J. From cell  
18 death to embryo arrest: mathematical models of human preimplantation embryo  
19 development. *Proc. Natl. Acad. Sci. U S A*, **2001**, 98(4), 1655-1660.
- 20 [27] de Pol ,A.; Vaccina, F.; Foraboscu, A.; Cavazzuti, E.; Marzoni, L. Apoptosis of germ  
21 cells during human prenatal oogenesis. *Hum. Reprod*, **1997**, 12, 2235–2241.
- 22 [28] Vaskivuo, T.E.; Anttonen, M.; Herva, R.; Billig, H.; Dorland, M.; te Velde, E.R.;  
23 Stenbäck, F.; Heikinheimo, M.; Tapanainen, J.S. Survival of human ovarian follicles  
24 from fetal to adult life: apoptosis, apoptosis-related proteins, and transcription factor  
25 GATA-4. *J. Clin. Endocrinol. Metab.*, **2001**, 86(7), 3421–3429.

- 1 [29] Pepling, M.E.; Spradling, A.C. Mouse ovarian germ cell cysts undergo programmed  
2 breakdown to form primordial follicles. *Dev. Biol.*, **2001**, 234, 339–351.
- 3 [30] Ratts, V.S.; Flaws, J.A.; Kolp, R.; Sorenson, C.M.; Tilly, J.L. Ablation of bcl-2 gene  
4 expression decreases the numbers of oocytes and primordial follicles established in the  
5 post-natal female mouse gonad. *Endocrinology*, **1995**, 136(8):3665-3668.
- 6 [31] Pru JK, Tilly JL. Programmed cell death in the ovary: insights and future prospects  
7 using genetic technologies. *Mol. Endocrinol.*, **2001**, 15, 845–853.
- 8 [32] Quenby, S.M.; Gazvani, M.R.; Brazeau, C.; Neilson, J.; Lewis-Jones, D.I.; Vince, G.  
9 Oncogenes and tumour suppressor genes in first trimester human fetal development.  
10 *Mol. Hum. Reprod.*, **1999**, 5, 737–741.
- 11 [33] Albamonte, M.S.; Willis, M.A.; Albamonte, M.I.; Jensen, F.; Espinosa, M.B.; Vitullo,  
12 A.D. The developing human ovary: immunohistochemical analysis of germ-cell-  
13 specific VASA protein, BCL-2/Bax expression balance and apoptosis. *Hum. Reprod.*,  
14 **2008**, 23(8), 1895-1901.
- 15 [34] Fenwick, M.A.; Hurst, P.R. Immunohistochemical localization of active caspase-3 in  
16 the mouse ovary: growth and atresia of small follicles. *Reproduction*, **2002**, 124, 659–  
17 665.
- 18 [35] Matikainen, T.; Perez, G.I.; Zheng, T.S.; Kluzak, T.R.; Rueda, B.R.; Flavell, R.A.;  
19 Tilly, J.L. Caspase-3 gene knockout defines cell lineage specificity for programmed  
20 cell death signaling in the ovary. *Endocrinology*, **2001**, 142, 2468–2480.
- 21 [36] Feldmann, G.; Benifla, J.L.; Madelenat, P. Apoptosis of granulosa cells as a predictive  
22 marker of in vitro fertilization success ?. *Gynecol. Obstet. Fertil.*, **2006**, 34 (7-8), 547-  
23 582.
- 24 [37] Bergeron, L.; Perez, G.I.; Macdonald, G.; Shi, L.; Sun, Y.; Jurisicova, A.; Varmuza,  
25 S.; Latham, K.E.; Flaws, J.A.; Salter, J.C.; Hara, H.; Moskowitz, M.A.; Li, E.;

- Greenberg, A.; Tilly, J.L.; Yuan, J. Defects in regulation of apoptosis in caspase-2-deficient mice. *Genes Dev.*, **1998**, 12(9), 1304-1314.
- [38] Morita, Y.; Perez, G.I.; Maravei, D.V.; Tilly, K.I.; Tilly, J.L. Targeted expression of Bcl-2 in mouse oocytes inhibits ovarian follicle atresia and prevents spontaneous and chemotherapy-induced oocyte apoptosis *in vitro*. *Mol. Endocrinol.*, **1999**, 13, 841–850.
- [39] Martins da Silva, S.J.; Bayne, R.A.; Cambray, N.; Hartley, P.S.; McNeilly, A.S.; Anderson, R.A. Expression of activin subunits and receptors in the developing human ovary: activin A promotes germ cell survival and proliferation prior to primordial follicle formation. *Dev. Biol.*, **2004**, 266, 334–345.
- [40] Dolci, S.; Pesce, M.; De Felici, M. Combined action of stem cell factor, leukemia inhibitory factor, and cAMP on *in vitro* proliferation of mouse primordial germ cells. *Mol. Reprod. Dev.*, **1993**, 35, 134–139.
- [41] Spears, N.; Molinek, M.D.; Robinson, L.L.; Fulton, N.; Cameron, H.; Shimoda, K.; Telfer, E.E.; Anderson, R.A.; Price, D.J. The role of neurotrophin receptors in female germ-cell survival in mouse and human. *Development*, **2003**, 130(22), 5481-5491.
- [42] Perez, G.I.; Tilly, J.L. Cumulus cells are required for the increased apoptotic potential in oocytes of aged mice. *Hum. Reprod.*, **1997**, 12(12), 2781-2783.
- [43] Tilly, J.L. Commuting the death sentence: how oocytes strive to survive. *Nat. Rev. Mol. Cell. Biol.*, **2001**, 2(11), 838-848.
- [44] Wu, J.; Zhang, L.; Wang, X. Maturation and apoptosis of human oocytes *in vitro* are age-related. *Fertil. Steril.*, **2000**, 74(6), 1137-1141.
- [45] Boone, D.L.; Carnegie, J.A.; Rippstein, P.U.; Tsang, B.K. Induction of apoptosis in equine chorionic gonadotropin (eCG)-primed rat ovaries by anti-eCG antibody. *Biol. Reprod.*, **1997**, 57, 20-27.

- 1 [46] Hurst, P.R.; Mora, J.M.; Fenwick, M.A. Caspase-3, TUNEL and ultrastructural studies  
2 of small follicles in adult human ovarian biopsies. *Hum. Reprod.*, **2006**, 21(8), 1974-  
3 1980.
- 4 [47] Kim, J.M.; Boone, D.L.; Auyeung, A.; Tsang, B.K. Granulosa cell apoptosis induced  
5 at the penultimate stage of follicular development is associated with increased levels  
6 of Fas and Fas ligand in the rat ovary. *Biol. Reprod.*, **1998**, 58, 1170-1176.
- 7 [48] Rubio Pomar, F.J.; Roelen, B.A.; Slot, K.A.; van Tol, H.T.; Colenbrander, B.; Teerds,  
8 K.J. Role of Fas-mediated apoptosis and follicle-stimulating hormone on the  
9 developmental capacity of bovine cumulus oocyte complexes in vitro. *Biol. Reprod.*,  
10 **2004**, 71(3), 790-796.
- 11 [49] Chen, Q.; Yano, T. ; Matsumi, H. ; Osuga, Y.; Yano, N. ; Xu, J. ; Wada, O.; Koga, K.;  
12 Fujiwara, T.; Kugu, K.; Taketani, Y. Cross-Talk between Fas/Fas ligand system and  
13 nitric oxide in the pathway subserving granulosa cell apoptosis: a possible regulatory  
14 mechanism for ovarian follicle atresia. *Endocrinology*, **2005**, 146(2), 808-815.
- 15 [50] Malamitsi-Puchner, A.; Sarandakou, A.; Baka, S.; Vrachnis, N.; Kouskouni, E.;  
16 Hassiakos, D. Soluble Fas concentrations in the follicular fluid and oocyte-cumulus  
17 complex culture medium from women undergoing in vitro fertilization: association  
18 with oocyte maturity, fertilization, and embryo quality. *J. Soc. Gynecol. Investig.*,  
19 **2004**, 11(8), 566-569.
- 20 [51] Lee, K.S.; Joo, B.S.; Na, Y.J.; Yoon, M.S.; Choi, O.H.; Kim, W.W. Relationships  
21 between concentrations of tumor necrosis factor-alpha and nitric oxide in follicular  
22 fluid and oocyte quality. *J. Assist. Reprod. Genet.*, **2000**, 17(4), 222-228.
- 23 [52] Zolti, M.; Ben-Rafael, Z.; Meirom, R.; Shemesh, M.; Bider, D.; Mashiach, S.; Apte,  
24 R.N. Cytokine involvement in oocytes and early embryos. *Fertil. Steril.*, **1991**, 6(2),  
25 265-272.

- 1 [53] Maeda, A.; Inoue, N.; Matsuda-Minehata, F.; Goto, Y.; Cheng, Y.; Manabe, N. The  
2 role of interleukin-6 in the regulation of granulosa cell apoptosis during follicular  
3 atresia in pig ovaries. *J. Reprod. Dev.*, **2007**, 53(3), 481-490.
- 4 [54] Kim, M.R.; Tilly, J.L. Current concepts in Bcl-2 family member regulation of female  
5 germ cell development and survival. *Biochim. Biophys. Acta.*, **2004**, 1644(2-3), 205-  
6 210.
- 7 [55] Lin, C.F.; Chen, C.L.; Lin, Y.S. Ceramide in apoptotic signaling and anticancer  
8 therapy. *Curr. Med. Chem.*, **2006**, 13(14), 1609-1616.
- 9 [56] Knudson, C.M.; Tung, K.S.; Tourtellotte, W.G.; Brown, G.A.; Korsmeyer, S.J. Bax-  
10 deficient mice with lymphoid hyperplasia and male germ cell death. *Science*, **1995**,  
11 270(5233), 96-99.
- 12 [57] Tilly, J.L.; Tilly, K.I.; Perez, G.I. The genes of cell death and cellular susceptibility to  
13 apoptosis in the ovary: a hypothesis. *Cell. Death. Differ.*, **1997**, 4(3), 180-187.
- 14 [58] Wang, Y.; Rippstein, P.U.; Tsang, B.K. Role and gonadotrophic regulation of X-  
15 linked inhibitor of apoptosis protein expression during rat ovarian follicular  
16 development *in vitro*. *Biol. Reprod.*, **2003**, 68, 610-619.
- 17 [59] Schimmer, A.D. Inhibitor of apoptosis proteins: translating basic knowledge into  
18 clinical practice. *Cancer Res.*, **2004**, 64, 7183-7190.
- 19 [60] Assou, S.; Anahory, T.; Pantesco, V.; Le Carrou, T.; Pellestor, F.; Klein, B.;  
20 Reyftmann, L.; Dechaud, H.; De Vos, J.; Hamamah, S. The human cumulus--oocyte  
21 complex gene-expression profile. *Hum. Reprod.*, **2006**, 21(7), 1705-1719.
- 22 [61] Yacobi, K.; Wojtowicz, A.; Tsafriri, A.; Gross, A. Gonadotropins enhance caspase-3  
23 and -7 activity and apoptosis in the theca-interstitial cells of rat preovulatory follicles  
24 in culture. *Endocrinology*, **2004**, 145, 1943-1951.

- 1 [62] Murdoch, W. J.; Gottsch, M.L. Proteolytic mechanisms in the ovulatory folliculo-  
2 luteal transformation. *Connect. Tissue Res.*, **2003**, 44, 50-57.
- 3 [63] Pereda, J.; Cheviakoff, S.; Croxatto, H.B. Ultrastructure of a 4-cell human embryo  
4 developed in vivo. *Hum. Reprod.*, **1989**, 4(6), 680-688.
- 5 [64] Holte, J.; Berglund, L.; Milton, K.; Garelllo, C.; Gennarelli, G.; Revelli, A.; Bergh, T.  
6 Construction of an evidence-based integrated morphology cleavage embryo score for  
7 implantation potential of embryos scored and transferred on day 2 after oocyte  
8 retrieval. *Hum. Reprod.*, **2007**, 22(2), 548-557.
- 9 [65] Scott, L.; Finn, A.; O'Leary, T.; McLellan, S.; Hill, J. Morphologic parameters of  
10 early cleavage-stage embryos that correlate with fetal development and delivery:  
11 prospective and applied data for increased pregnancy rates. *Hum. Reprod.*, **2007**,  
12 22(1), 230-40.
- 13 [66] della Ragione, T.; Verheyen, G.; Papanikolaou, E.G.; Van Landuyt, L.; Devroey, P.;  
14 Van Steirteghem, A. Developmental stage on day-5 and fragmentation rate on day-3  
15 can influence the implantation potential of top- quality blastocysts in IVF cycles with  
16 single embryo transfer. *Reprod. Bio.l Endocrinol.*, **2007**, 5, 2.
- 17 [67] Ebner, T.; Yaman, C.; Moser, M.; Sommergruber, M.; Polz, W.; Tews, G. Embryo  
18 fragmentation in vitro and its impact on treatment and pregnancy outcome. *Fertil.*  
19 *Steril.*, **2001**, 76(2), 281-285.
- 20 [68] Alikani, M.; Calderon, G.; Tomkin, G.; Garrisi, J.; Kokot, M.; Cohen, J. Cleavage  
21 anomalies in early human embryos and survival after prolonged culture in-vitro. *Hum.*  
22 *Reprod.*, **2000**, 15(12), 2634-2643.
- 23 [69] Van Blerkom, J.; Davis, P.; Alexander, S. A microscopic and biochemical study of  
24 fragmentation phenotypes in stage-appropriate human embryos. *Hum. Reprod.*, **2001**,  
25 16(4), 719-729.

- [70] Antczak, M.; Van Blerkom, J. Temporal and spatial aspects of fragmentation in early human embryos: possible effects on developmental competence and association with the differential elimination of regulatory proteins from polarized domains. *Hum. Reprod.*, **1999**, 14(2), 429-447.
- [71] Trounson, A.; Sathananthan, A.H. The application of electron microscopy in the evaluation of two- to four-cell human embryos cultured in vitro for embryo transfer. *J. In Vitro Fert. Embryo Transf.*, **1984**, 1(3), 153-165.
- [72] Hardy, K. Apoptosis in the human embryo. *J. Reprod. Fert.*, **1999**, 4, 125-134.
- [73] Jurisicova, A.; Varmuza, S.; Casper, R.F. Programmed cell death and human embryo fragmentation. *Mol. Hum. Reprod.*, **1995**, 2(2), 93-98.
- [74] Hardy, K. Cell death in the mammalian blastocyst. *Mol. Hum. Reprod.*, **1997**, 3(10), 919-925.
- [75] Hardy, K.; Stark, J.; Winston, R.M. Maintenance of the inner cell mass in human blastocysts from fragmented embryos. *Biol. Reprod.*, **2003**, 68(4), 1165-1169.
- [76] Jurisicova, A.; Antenos, M.; Varmuza, S.; Tilly, J.L.; Casper, R.F. Expression of apoptosis-related genes during human preimplantation embryo development: potential roles for the Harakiri gene product and Caspase-3 in blastomere fragmentation. *Mol. Hum. Reprod.*, **2003**, 9(3), 133-141.
- [77] Levy, R.; Benchaib, M.; Cordonier, H.; Guerin, J.F. Apoptosis in the pre-implantation embryo. *Contracept. Fertil. Sex.*, **1998**, 26(7-8), 536-541.
- [78] Moley, K.H.; Chi, M.M.; Knudson, C.M.; Korsmeyer, S.J.; Mueckler, M.M. Hyperglycemia induces apoptosis in pre-implantation embryos through cell death effector pathways. *Nat. Med.*, **1998**, 4(12), 1421-1424.



- 1 [79] Exley, G.E.; Tang, C.; McElhinny, A.S.; Warner, C.M. Expression of caspase and  
2 BCL-2 apoptotic family members in mouse preimplantation embryos. *Biol. Reprod.*,  
3 **1999**, 61(1), 231-239.
- 4 [80] Metcalfe, A.D.; Hunter, H.R.; Bloor, D.J.; Lieberman, B.A.; Picton, H.M.; Leese, H.J.;  
5 Kimber, S.J.; Brison, D.R. Expression of 11 members of the BCL-2 family of  
6 apoptosis regulatory molecules during human preimplantation embryo development  
7 and fragmentation. *Mol. Reprod. Dev.*, **2004**, 68(1), 35-50.
- 8 [81] Warner, C.M.; Cao, W.; Exley, G.E.; McElhinny, A.S.; Alikani, M.; Cohen, J.; Scott,  
9 R.T.; Brenner, C.A. Genetic regulation of egg and embryo survival. *Hum. Reprod.*,  
10 **1998**, 13Suppl3, 178-190.
- 11 [82] Spanos, S.; Rice, S.; Karagiannis, P.; Taylor, D.; Becker, D.L.; Winston, R.M.; Hardy,  
12 K. Caspase activity and expression of cell death genes during development of human  
13 preimplantation embryos. *Reproduction*, **2002**, 124(3), 353-363.
- 14 [83] Li, F.; Brattain, M.G. Role of the Survivin gene in pathophysiology. *Am. J. Pathol.*,  
15 **2006**, 169(1), 1-11.
- 16 [84] Johnson, M.E.; Howerth, E.W. Survivin: a bifunctional inhibitor of apoptosis protein.  
17 *Vet. Pathol.*, **2004**, 41(6), 599-607
- 18 [85] Uren, A.G.; Wong, L.; Pakusch, M.; Fowler, K.J.; Burrows, F.J.; Vaux, D.L.; Choo,  
19 K.H.A. Survivin and the inner centromere protein INCENP show similar cell-cycle  
20 localization and gene knockout phenotype. *Curr. Biol.*, **2000**, 10, 1319-1328.
- 21 [86] Kawamura, K.; Sato, N.; Fukuda, J.; Kodama, H.; Kumagai, J.; Tanikawa, H.;  
22 Shimizu, Y.; Tanaka, T. Survivin acts as an antiapoptotic factor during the  
23 development of mouse preimplantation embryos. *Dev. Biol.*, **2003**, 256(2), 331-341.
- 24 [87] O'Neill, C. The potential roles for embryotrophic ligands in preimplantation embryo  
25 development. *Hum. Reprod. Update*, **2008**, 14(3), 275-288.

- 1 [88] Bedaiwy, M.; Shahin, A.Y.; AbulHassan, A.M.; Goldberg, J.M.; Sharma, R.K.;  
2 Agarwal, A.; Falcone, T. Differential expression of follicular fluid cytokines:  
3 relationship to subsequent pregnancy in IVF cycles. *Reprod. Biomed. Online*, **2007**,  
4 15(3), 321-325.
- 5 [89] Spanos, S.; Becker, D.L.; Winston, R.M.; Hardy, K. Anti-apoptotic action of insulin-  
6 like growth factor-I during human preimplantation embryo development. *Biol.*  
7 *Reprod.*, **2000**, 63(5), 1413-1420.
- 8 [90] Chen, C.S.; Mrksich, M.; Huang, S.; Whitesides, G.M.; Ingber, D.E. Geometric  
9 control of cell life and death. *Science*, **1997**, 276, 1425-1428.
- 10 [91] Bissell, M.J.; Radisky, D.C.; Rizki, A.; Weaver, V.M.; Petersen, O.W. The organizing  
11 principle: microenvironmental influences in the normal and malignant breast.  
12 *Differentiation*, **2002**, 70(9-10), 537-546.
- 13 [92] Ingber, D.E. Mechanical signaling and the cellular response to extracellular matrix in  
14 angiogenesis and cardiovascular physiology. *Circ. Res.*, **2002**, 91, 877-887.
- 15 [93] Radisky, D.; Muschler, J.; Bissell, M.J. Order and disorder: the role of extracellular  
16 matrix in epithelial cancer. *Cancer Invest.*, **2002**, 20, 139-153
- 17 [94] Walpita, D.; Hay, E. Studying actin-dependent processes in tissue culture. *Nat. Rev.*  
18 *Mol. Cell. Biol.*, **2002**, 3, 137-141.
- 19 [95] Weaver, V.M.; Peterson, O.W.; Wang, F.; Larabell, C.A.; Briand, P.; Damsky, C.;  
20 Bissell, M.J. Reversion of the malignant phenotype of human breast cells in three-  
21 dimensional culture and in vivo by integrin blocking antibodies. *J. Cell. Biol.*, **1997**,  
22 137, 231-245.
- 23 [96] Weaver, V.M.; Lelievre, S.; Lakins, J.N.; Chrenek, M.A.; Jones, J.C.; Giancotti, F.;  
24 Werb, Z.; Bissell, M.J. Beta4 integrin-dependent formation of polarized three-

dimensional architecture confers resistance to apoptosis in normal and malignant mammary epithelium. *Cancer Cell*, **2002**, 2, 205-216.

[97] Downward, J. PI 3-kinase, Akt and cell survival. *Semin. Cell. Dev. Biol.*, **2004**, 15, 177-182.

[98] Hardy, K.; Spanos, S. Growth factor expression and function in the human and mouse preimplantation embryo. *J. Endocrinol.*, **2002**, 172(2), 221-236.

[99] Roberts, R.; Franks, S.; Hardy, K. Culture environment modulates maturation and metabolism of human oocytes. *Hum. Reprod.*, **2002**, 17(11), 2950-2956.

[100] Hovatta, O.; Silye, R.; Abir, R.; Krausz, T.; Winston, R.M. Extracellular matrix improves survival of both stored and fresh human primordial and primary ovarian follicles in long-term culture. *Hum. Reprod.*, **1997**, 12(5), 1032-1036.

[101] Downs, S.M.; Utecht, A.M. Metabolism of radiolabeled glucose by mouse oocytes and oocyte-cumulus cell complexes. *Biol. Reprod.*, **1999**, 60(6), 1446-1452.

[102] Roberts, R.; Stark, J.; Iatropoulou, A.; Becker, D.L.; Franks, S.; Hardy, K. Energy substrate metabolism of mouse cumulus-oocyte complexes: response to follicle-stimulating hormone is mediated by the phosphatidylinositol 3-kinase pathway and is associated with oocyte maturation. *Biol. Reprod.*, **2004**, 71(1), 199-209.

[103] Hoshino, Y.; Yokoo, M.; Yoshida, N.; Sasada, H.; Matsumoto, H.; Sato, E. Phosphatidylinositol 3-kinase and Akt participate in the FSH-induced meiotic maturation of mouse oocytes. *Mol. Reprod. Dev.*, **2004**, 69(1), 77-86.

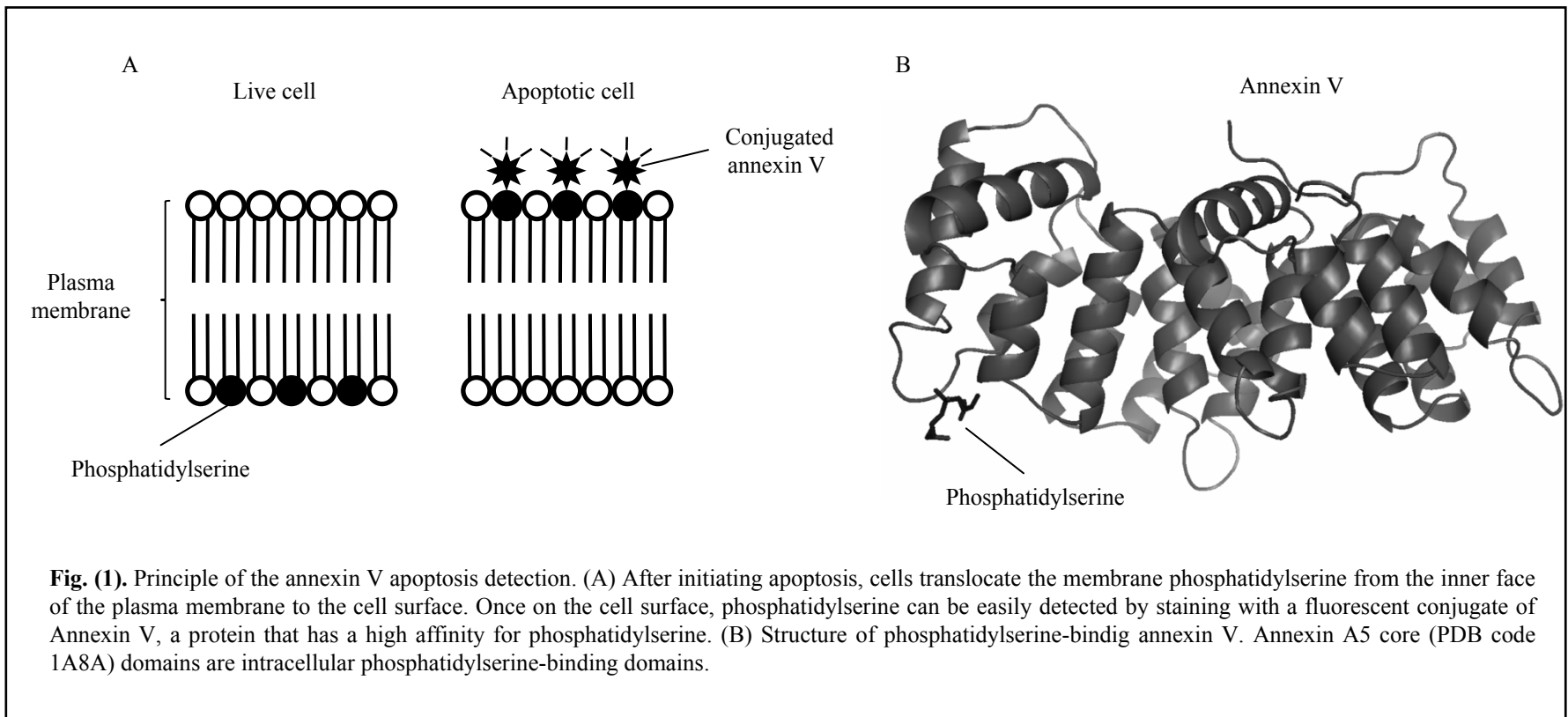
[104] Shimada, M.; Ito, J.; Yamashita, Y.; Okazaki, T.; Isobe, N. Phosphatidylinositol 3-kinase in cumulus cells is responsible for both suppression of spontaneous maturation and induction of gonadotropin-stimulated maturation of porcine oocytes. *J. Endocrinol.*, **2003**, 179(1), 25-34.

- [105] Blondin, P.; Sirard, M.A. Oocyte and follicular morphology as determining characteristics for developmental competence in bovine oocytes. *Mol. Reprod. Dev.*, **1995**, 41(1), 54-62.
- [106] Dong, J.; Albertini, D.F.; Nishimori, K.; Kumar, T.R.; Lu, N.; Matzuk, M.M. Growth differentiation factor-9 is required during early ovarian folliculogenesis. *Nature*, **1996**, 383(6600), 531-535.
- [107] Hayashi, M.; McGee, E.A.; Min, G.; Klein, C.; Rose, U.M.; van Duin, M.; Hsueh, A.J. Recombinant growth differentiation factor-9 (GDF-9) enhances growth and differentiation of cultured early ovarian follicles. *Endocrinology*, **1999**, 140(3), 1236-1244.
- [108] Nilsson, E.E.; Skinner, M.K. Growth and differentiation factor-9 stimulates progression of early primary but not primordial rat ovarian follicle development. *Biol. Reprod.*, **2002**, 67(3), 1018-1024.
- [109] Gueripel, X.; Brun, V.; Gougeon, A. Oocyte bone morphogenetic protein 15, but not growth differentiation factor 9, is increased during gonadotropin-induced follicular development in the immature mouse and is associated with cumulus oophorus expansion. *Biol. Reprod.*, **2006**, 75(6), 836-843.
- [110] McNatty, K.P.; Reader, K.; Smith, P.; Heath, D.A.; Juengel, J.L. Control of ovarian follicular development to the gonadotrophin-dependent phase: a 2006 perspective. *Soc. Reprod. Fertil.*, **2007**, 64, 55-68.
- [111] Aaltonen, J.; Laitinen, M.P.; Vuojolainen, K.; Jaatinen, R.; Horelli-Kuitunen, N.; Seppä, L.; Louhio, H.; Tuuri, T.; Sjöberg, J.; Bützow, R.; Hovatta, O.; Dale, L.; Ritvos, O. Human growth differentiation factor 9 (GDF-9) and its novel homolog GDF-9B are expressed in oocytes during early folliculogenesis. *J. Clin. Endocrinol. Metab.*, **1999**, (8), 2744-2750.

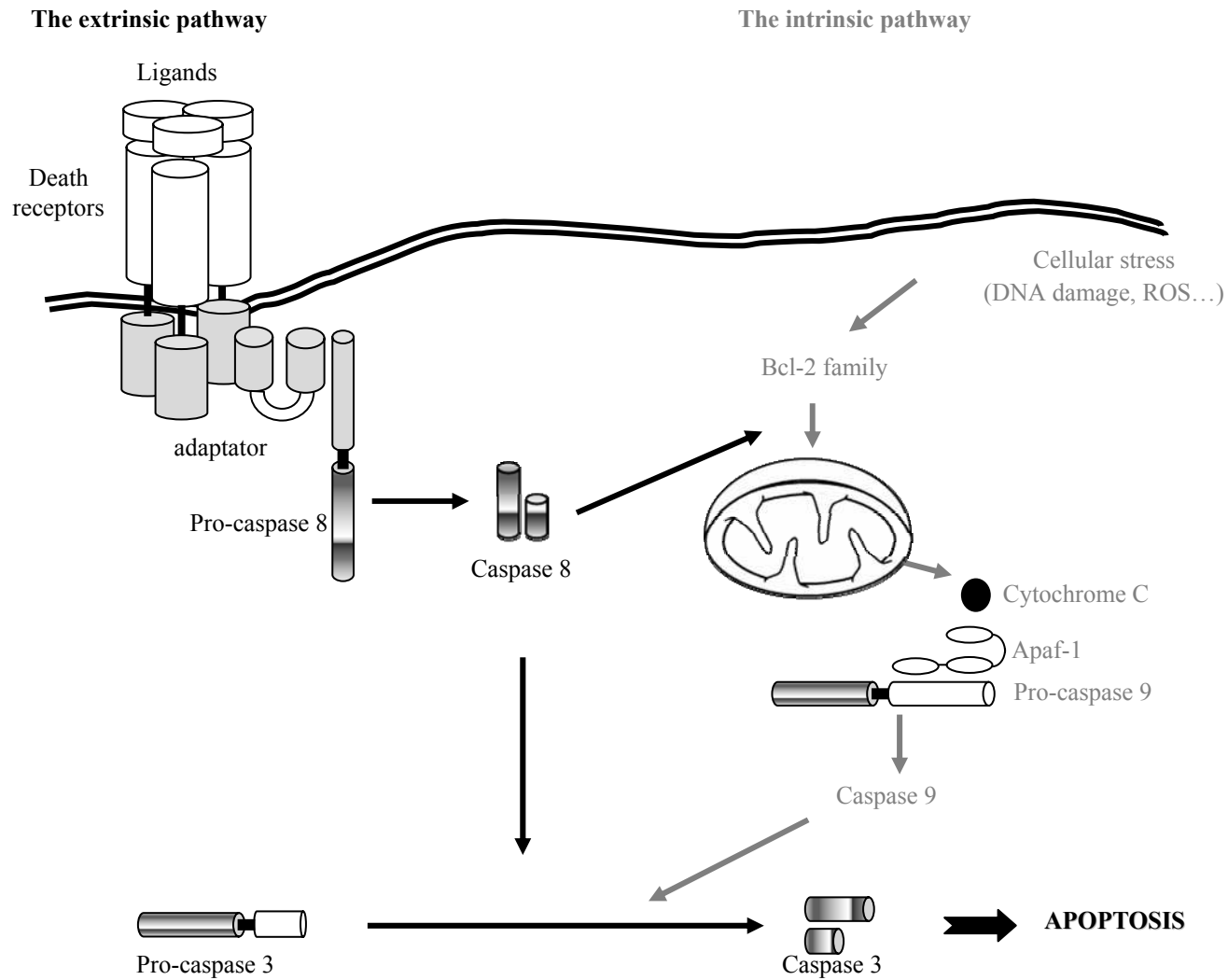
- 1 [112] Hreinsson, J.G.; Scott, J.E.; Rasmussen, C.; Swahn, M.L.; Hsueh, A.J.; Hovatta, O.  
2 Growth differentiation factor-9 promotes the growth, development, and survival of  
3 human ovarian follicles in organ culture. *J. Clin. Endocrinol. Metab.*, **2002**, 7(1), 316-  
4 321.
- 5 [113] Lackey, B.R.; Gray, S.L.; Henricks, D.M. The insulin-like growth factor (IGF) system  
6 and gonadotropin regulation: actions and interactions. *Cytokine Growth Factor Rev.*,  
7 **1999**, 10(3-4), 201-217.
- 8 [114] Woodward, T.L.; Xie, J.; Fendrick, J.L.; Haslam, S.Z. Proliferation of mouse  
9 mammary epithelial cells in vitro: interactions among epidermal growth factor,  
10 insulin-like growth factor I, ovarian hormones, and extracellular matrix proteins.  
11 *Endocrinology*, **2000**, 141(10), 3578-3586.
- 12 [115] Weber, G.M.; Moore, A.B.; Sullivan, C. In vitro actions of insulin-like growth factor-I  
13 on ovarian follicle maturation in white perch (*Morone americana*). *Gen. Comp.*  
14 *Endocrinol.*, **2007**, 151(2), 180-187.
- 15 [116] Assou, S.; Le Carrou, T.; Tondeur, S.; Strom, S.; Gabelle, A.; Marty, S.; Nadal, L.;  
16 Pantesco, V.; Réme, T.; Hugnot, J.P.; Gasca, S.; Hovatta, O.; Hamamah, S.; Klein, B.;  
17 De Vos, J. A meta-analysis of human embryonic stem cells transcriptome integrated  
18 into a web-based expression atlas. *Stem Cells*, **2007**, 25(4), 961-973.
- 19 [117] Gasca, S.; Pellestor, F.; Assou, S.; Loup, V.; Anahory, T.; Dechaud, H.; De Vos, J.;  
20 Hamamah, S. Identifying new human oocyte marker genes: a microarray approach.  
21 *Reprod. Biomed. Online*, **2007**, 4(2), 175-183.
- 22 [118] Brison, D.R.; Schultz, R.M. Increased incidence of apoptosis in transforming growth  
23 factor alpha-deficient mouse blastocysts. *Biol. Reprod.*, **1998**, 59(1), 136-144.

- 1 [119] Morgan, K.; Wiemer, K.; Steuerwald, N.; Hoffman, D.; Maxson, W.; Godke, R. Use  
2 of video cinematography to assess morphological qualities of conventionally cultured  
3 and cocultured embryos. *Hum. Reprod.*, **1995**, 10(9), 2371-2376.
- 4 [120] Kane, M.T.; Morgan, P.M.; Coonan, C. Peptide growth factors and preimplantation  
5 development. *Hum. Reprod. Update*, **1997**, 3(2), 137-157.
- 6 [121] Teruel, M.; Smith, R. Effect of embryo density and growth factors on in vitro  
7 preimplantation development of mouse embryos. *Acta Physiol. Pharmacol. Ther.*  
8 *Latinoam.*, **1997**, 47(2), 87-96.
- 9 [122] Dunglison, G.F.; Barlow, D.H.; Sargent, I.L. Leukaemia inhibitory factor significantly  
10 enhances the blastocyst formation rates of human embryos cultured in serum-free  
11 medium. *Hum. Reprod.*, **1996**, 11(1), 191-196.
- 12 [123] Martin, K.L.; Barlow, D.H.; Sargent, I.L. Heparin-binding epidermal growth factor  
13 significantly improves human blastocyst development and hatching in serum-free  
14 medium. *Hum. Reprod.*, **1998**, 13(6), 1645-1652.
- 15 [124] Keefe, D.L.; Franco, S.; Liu, L.; Trimarchi, J.; Cao, B.; Weitzen, S.; Agarwal, S.;  
16 Blasco, M.A. Telomere length predicts embryo fragmentation after in vitro  
17 fertilization in women-toward a telomere theory of reproductive aging in women. *Am.*  
18 *J. Obstet. Gynecol.*, **2005**, 192(4), 1256-1260.
- 19 [125] Cupisti, S.; Conn, C.M.; Fragouli, E.; Whalley, K.; Mills, J.A.; Faed, M.J.; Delhanty,  
20 J.D. Sequential FISH analysis of oocytes and polar bodies reveals aneuploidy  
21 mechanisms. *Prenat. Diagn.*, **2003**, 23, 663-668.
- 22 [126] Pellestor, F.; Andréo, B.; Anahory, T.; Déchaud, H.; Hédon, B.; Hamamah, S. The  
23 cytogenetics of human oocytes: 40 years of progress. *Gynecol. Obstet. Fertil.*, **2005**,  
24 33(5), 283-292.

- 1 [127] Bermúdez, M.G.; Wells, D.; Malter, H.; Munné, S.; Cohen, J.; Steuerwald, N.M.;  
2 Expression profiles of individual human oocytes using microarray technology.  
3 *Reprod. Biomed. Online*, **2004**, 8(3), 325-337.
- 4 [128] Arraztoa, J.A.; Zhou, J.; Marcu, D.; Cheng, C.; Bonner, R.; Chen, M.; Xiang, C.;  
5 Brownstein, M.; Maissey, K.; Imarai, M.; Bondy, C. Identification of genes expressed  
6 in primate primordial oocytes. *Hum. Reprod.*, **2005**, 20(2), 476-483.



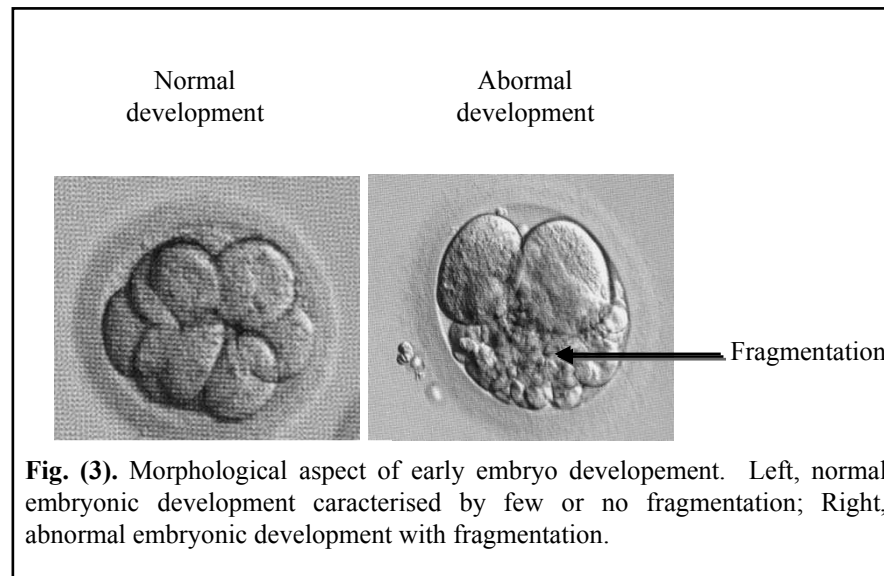


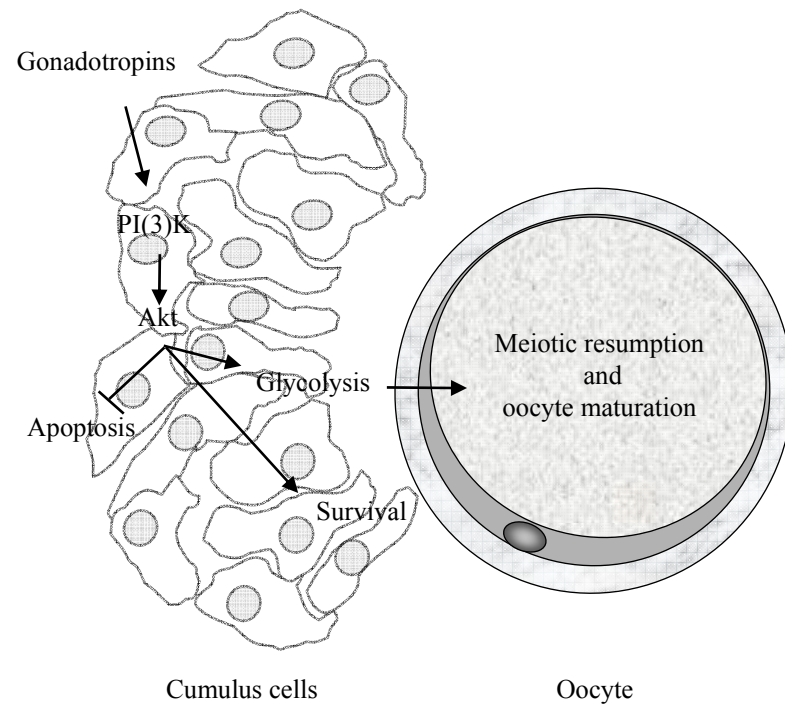


**Fig. (2).** Schematic representation of the two major transduction pathways of apoptotic signalling. The first one, called the extrinsic pathway, is activated by the binding of ligands to membrane-bound death receptors of the TNFR family. The second pathway, called the intrinsic pathway, involves a plethora of signals that converge on the mitochondria *via* the pro- and the anti- apoptotic members of the Bcl2 family. The extrinsic pathway links into the intrinsic pathway *via* a pro-apoptotic Bcl2-family protein, Bid.

		Ovary	Oocyte	Early embryo development stage			
				zygote	2 cells	8 cells	Blastocyst
<i>Bcl-2 family</i>							
Pro-apoptotic members:	Bak	+/-	n.d	+	+	+	+
	Bax	+/-	+/-	+	+	+	+
	Bid	n.d	n.d	-	+	+	-
	Bad	n.d	n.d	+	+	+	+
Anti-apoptotic members:	Bcl-2	+/-	+	+	+	+	+
	Bcl-xL	+/-	+/-	+/-	-	+	-
	Bcl-w	n.d	n.d	+	+	-	-
<i>Caspases</i>							
	Caspase 2	+	+	+	+	+	+
	Caspase 3	+/-	+	+	+/-	+	+

Table I: mRNA expression of the Bcl-2 family and caspases during human pre-implantation embryo development. This table shows the data of several publications and the contradictory results. + : detected, - : not detected, +/- : detected and not detected, n.d : not determined.





**Fig. (4).** Key role of the PI(3)K/Akt signalling in the cumulo-oocyte complex survival. The PI(3)K/Akt signalling pathway in cumulus cells plays a determining role in the suppression of both spontaneous and gonadotropin-stimulated meiotic re-entry in oocyte as well as in oocyte survival.