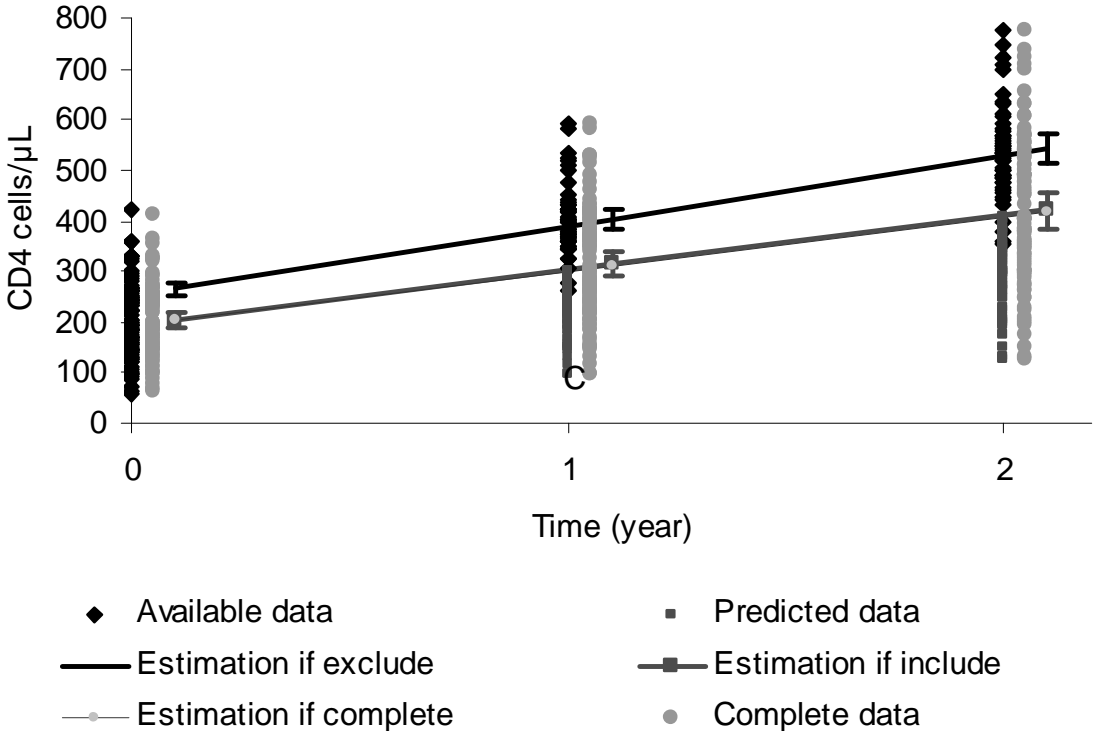


Figure 1. Data and estimation of mean CD4 cells/ μ L according to data used: complete dataset (grey), excluding patients without follow-up measurements due to low baseline CD4 cell count (black), including all patients (red).



Note: estimates from the complete dataset (in grey) are very similar to with estimates from model fitted with patients having one measurement available or more (in red) (see Table 1).