



HAL
open science

Dissection of the unusual structural and functional properties of the variant H2A.Bbd nucleosome.

Cécile-Marie Doyen, Fabien Montel, Thierry Gautier, Hervé Menoni, Cyril Claudet, Marlène Delacour-Larose, Dimitar Angelov, Ali Hamiche, Jan Bednar, Cendrine Faivre-Moskalenko, et al.

► **To cite this version:**

Cécile-Marie Doyen, Fabien Montel, Thierry Gautier, Hervé Menoni, Cyril Claudet, et al.. Dissection of the unusual structural and functional properties of the variant H2A.Bbd nucleosome.. EMBO Journal, 2006, 25 (18), pp.4234-44. 10.1038/sj.emboj.7601310 . inserm-00335077

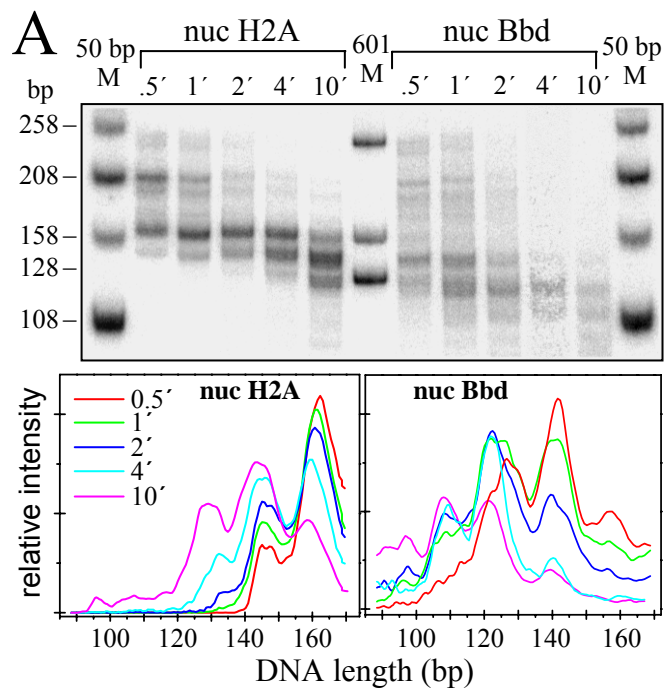
HAL Id: inserm-00335077

<https://inserm.hal.science/inserm-00335077>

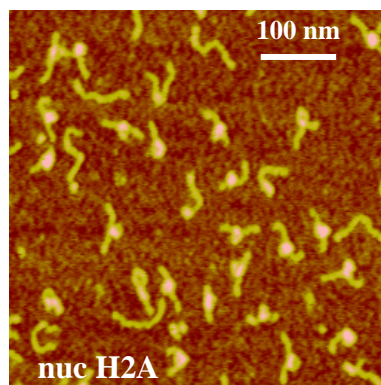
Submitted on 28 Oct 2008

HAL is a multi-disciplinary open access archive for the deposit and dissemination of scientific research documents, whether they are published or not. The documents may come from teaching and research institutions in France or abroad, or from public or private research centers.

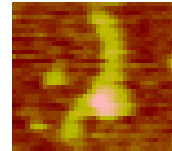
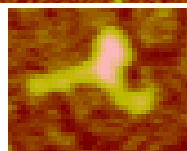
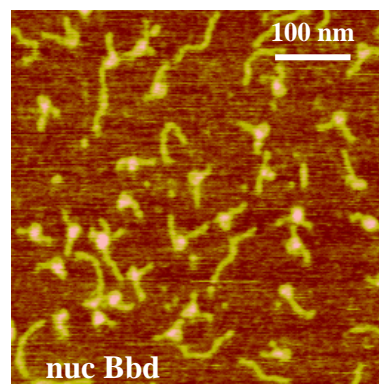
L'archive ouverte pluridisciplinaire **HAL**, est destinée au dépôt et à la diffusion de documents scientifiques de niveau recherche, publiés ou non, émanant des établissements d'enseignement et de recherche français ou étrangers, des laboratoires publics ou privés.



B



C



D

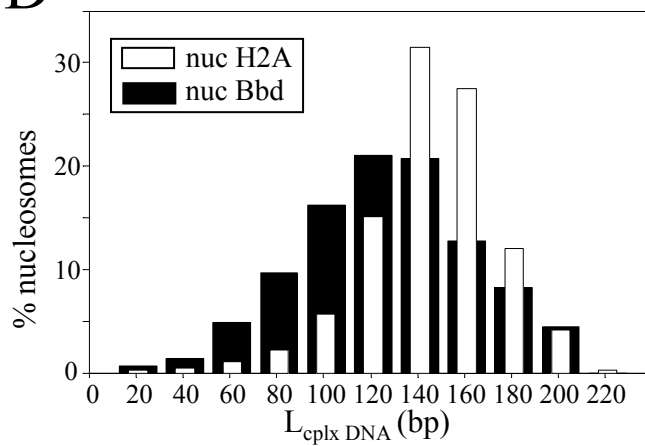


Figure 1

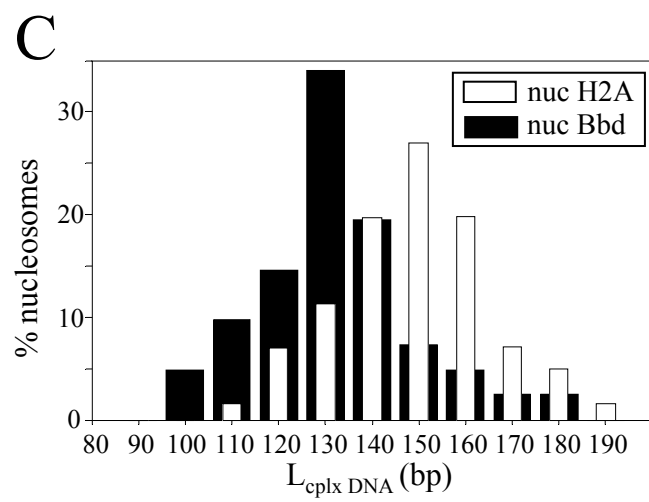
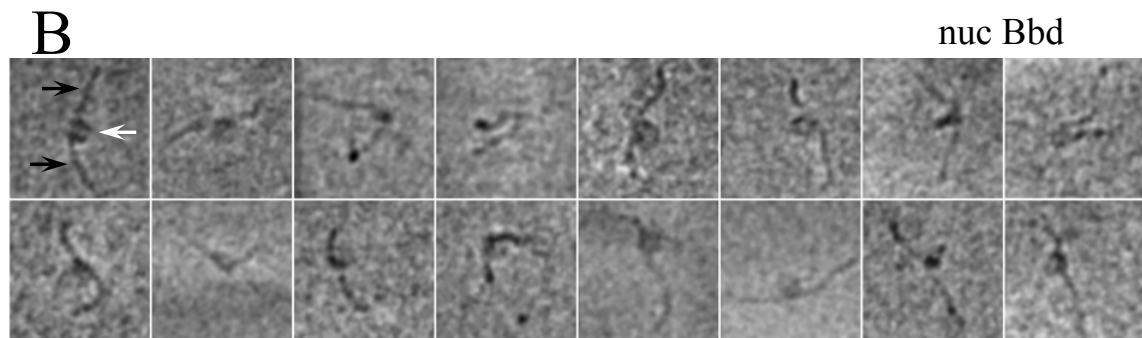
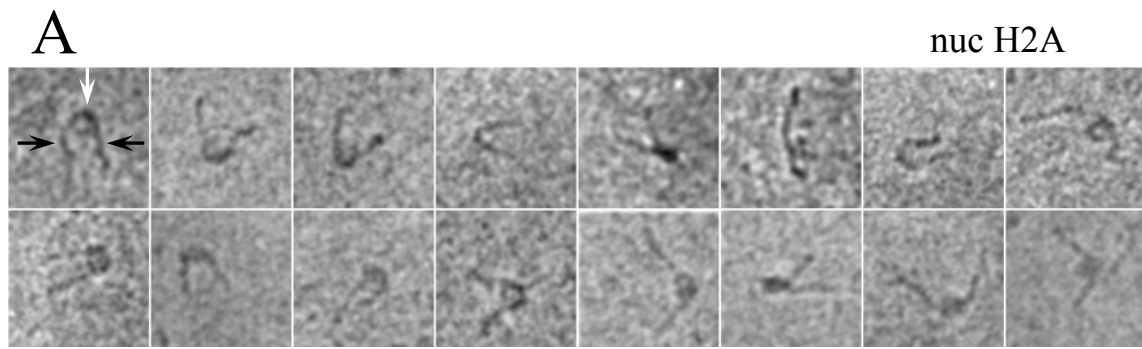


Figure 2

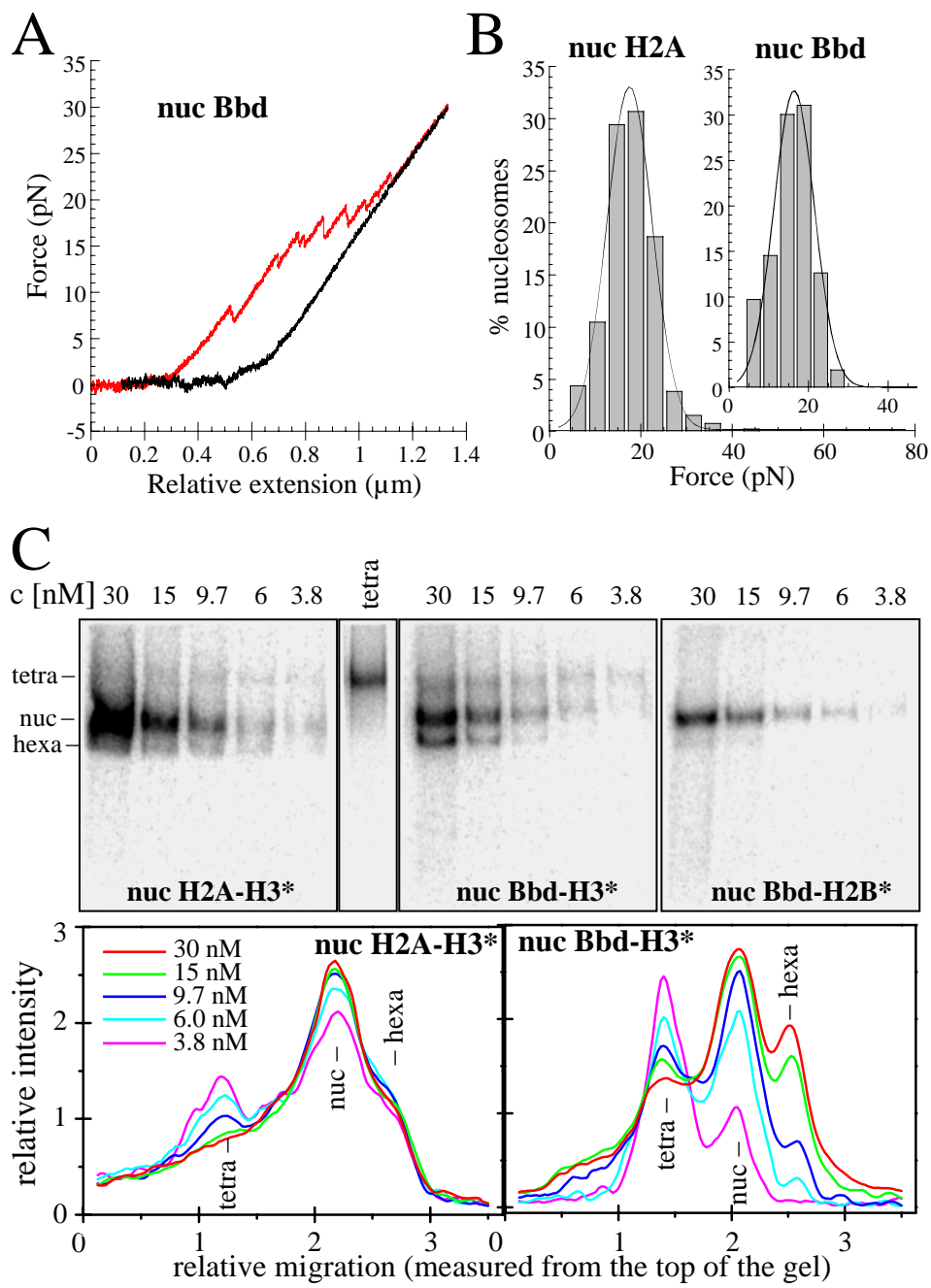


Figure 3

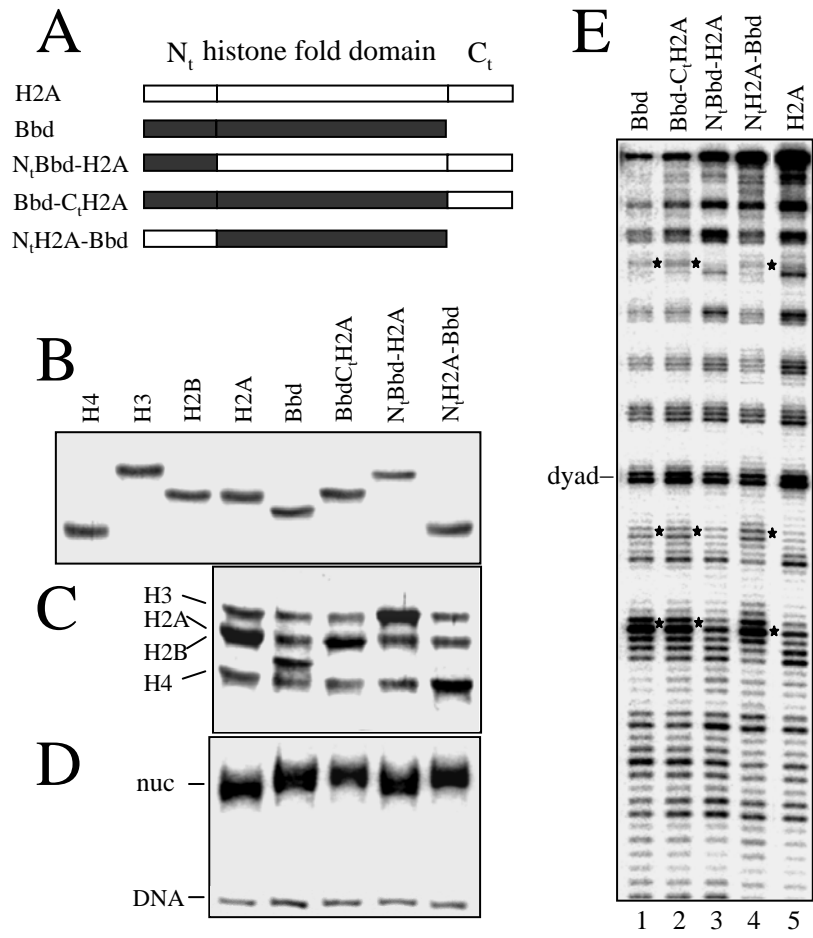


Figure 4

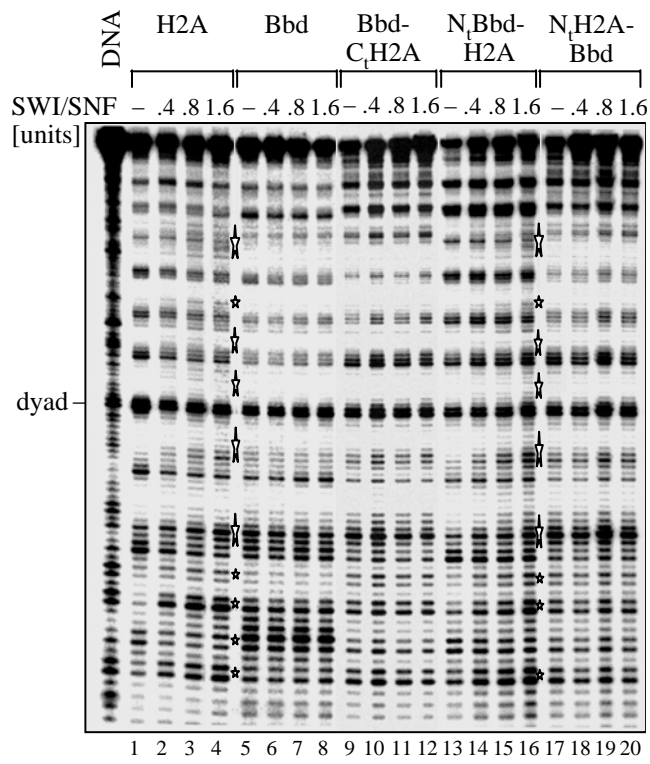


Figure 5

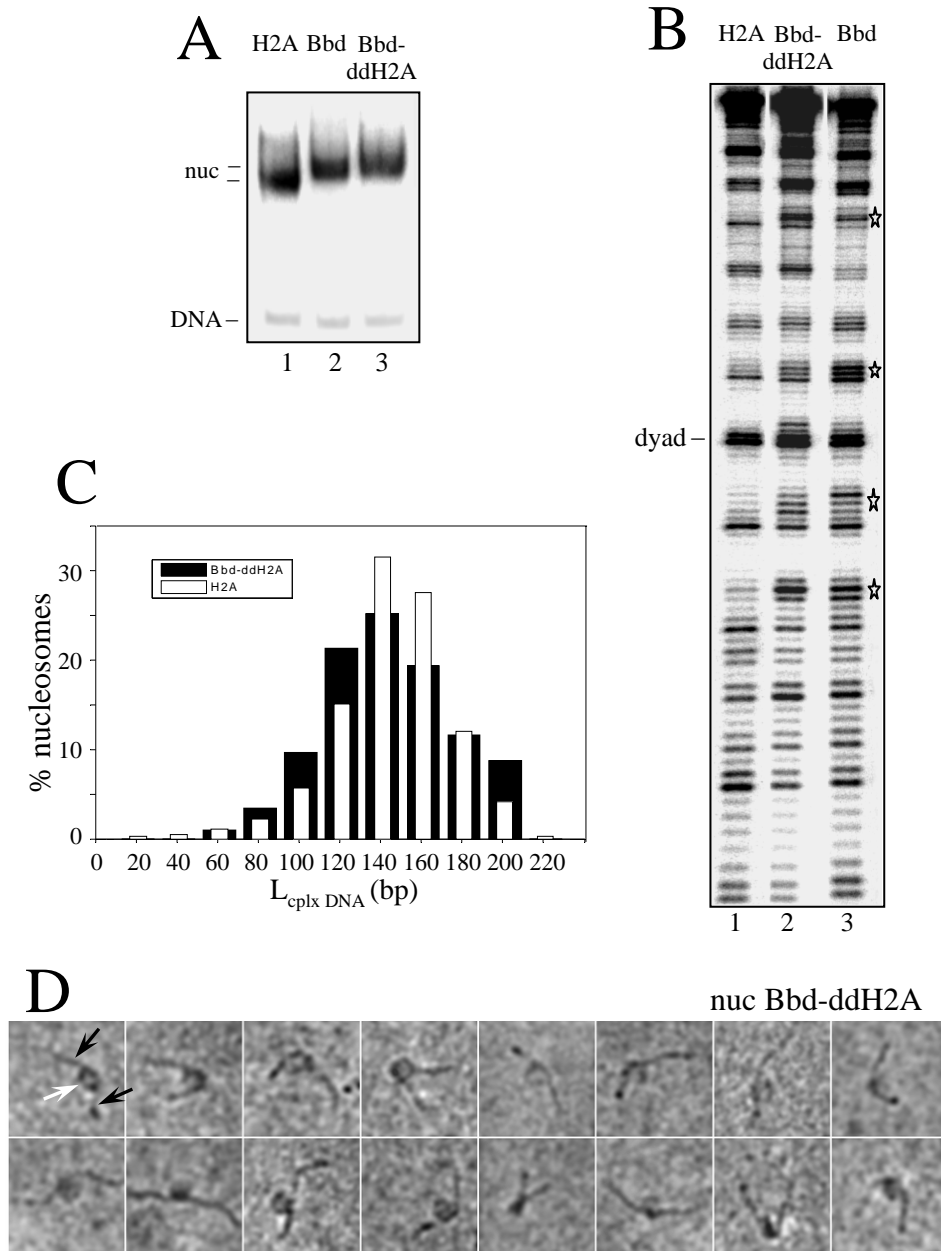


Figure 6

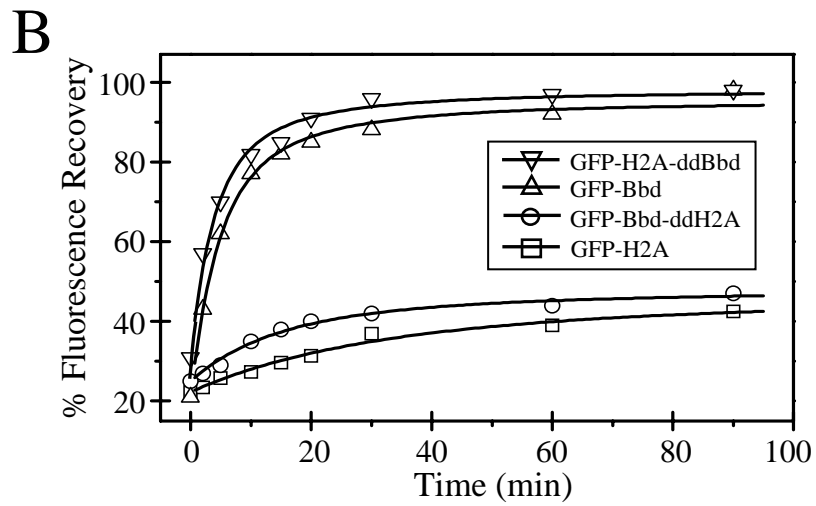
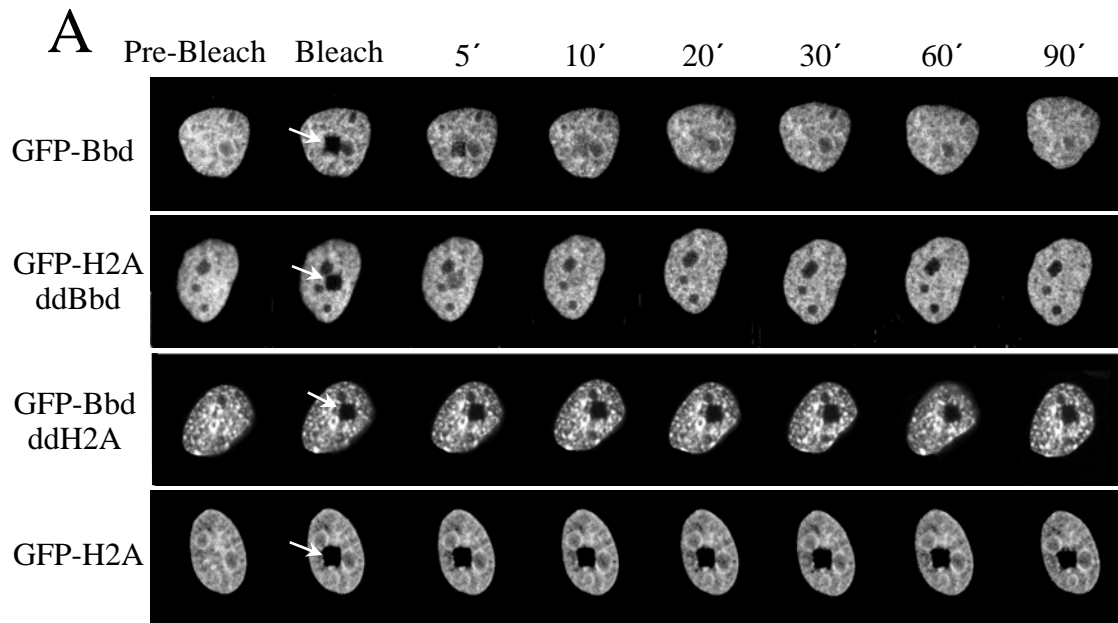


Figure 7

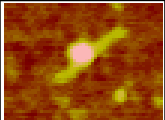
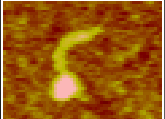
| + SWI/SNF | nuc H2A | | nuc Bbd | | nuc Bbd-ddH2A | |
|-----------------------------------------------------------------------------------|-------------------|-------------------|-------------------|-------------------|-------------------|-------------------|
| | -ATP [140 nuc] | +ATP [132 nuc] | -ATP [221 nuc] | +ATP [236 nuc] | -ATP [119 nuc] | +ATP [115 nuc] |
|  | 90 % | 43 % | 69 % | 59 % | 86 % | 58 % |
|  | 10 % | 57 % | 31 % | 41 % | 14 % | 42 % |
| % Sliding | 52% | | 14% | | 31% | |

Figure 8