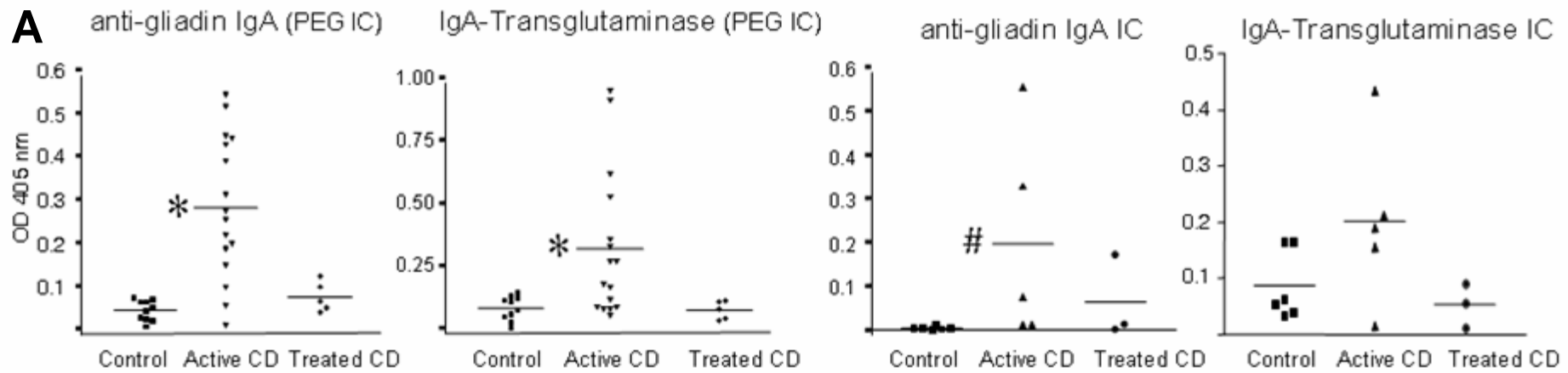


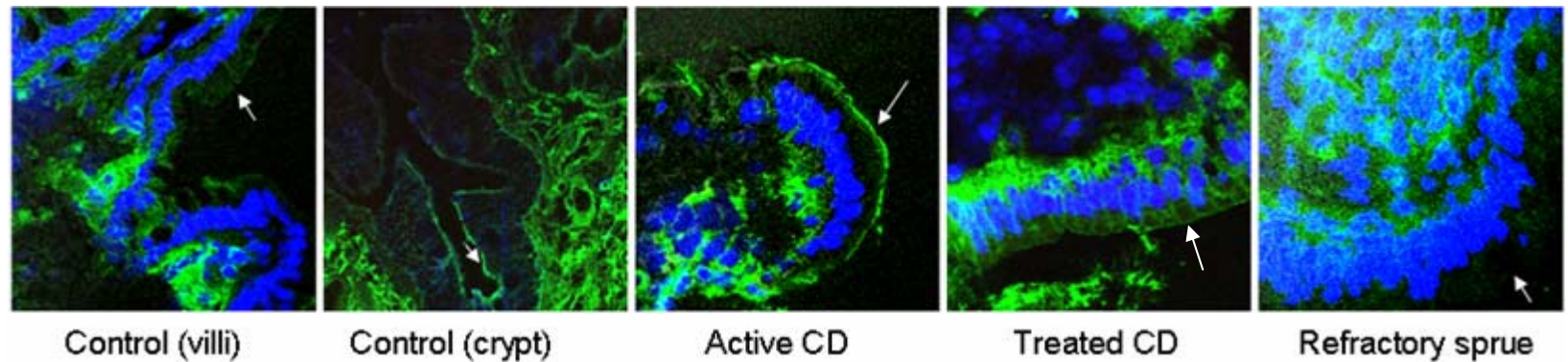
Figure 1

Serum

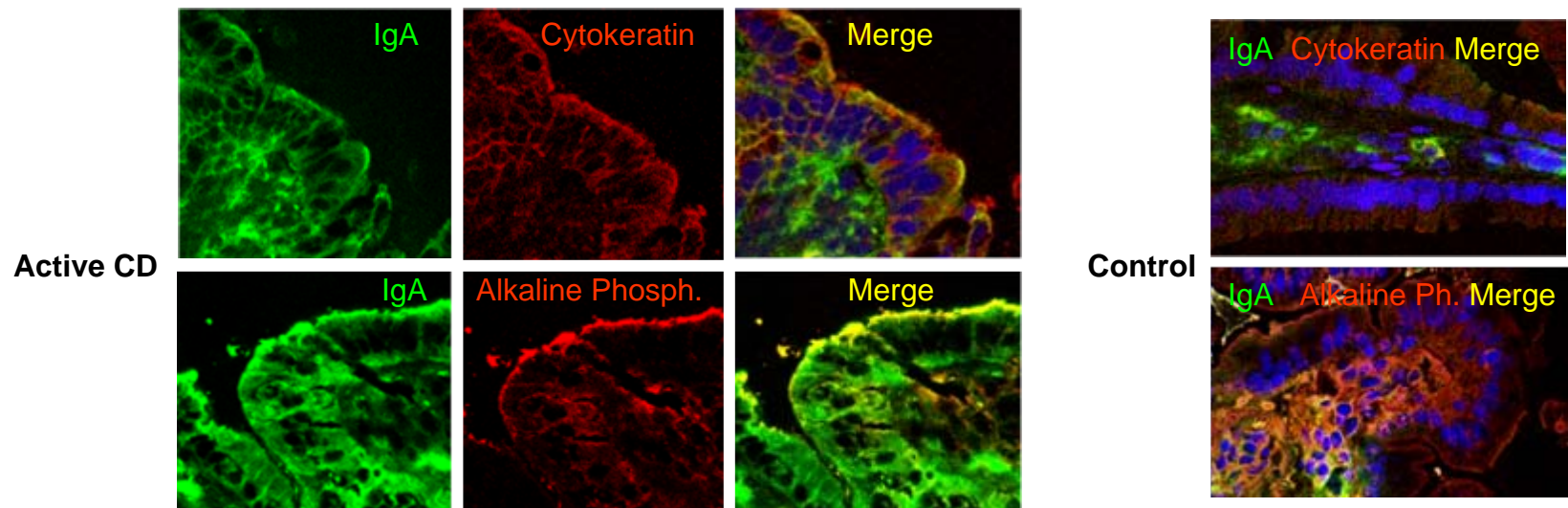
Duodenal secretion



**B**



**C**



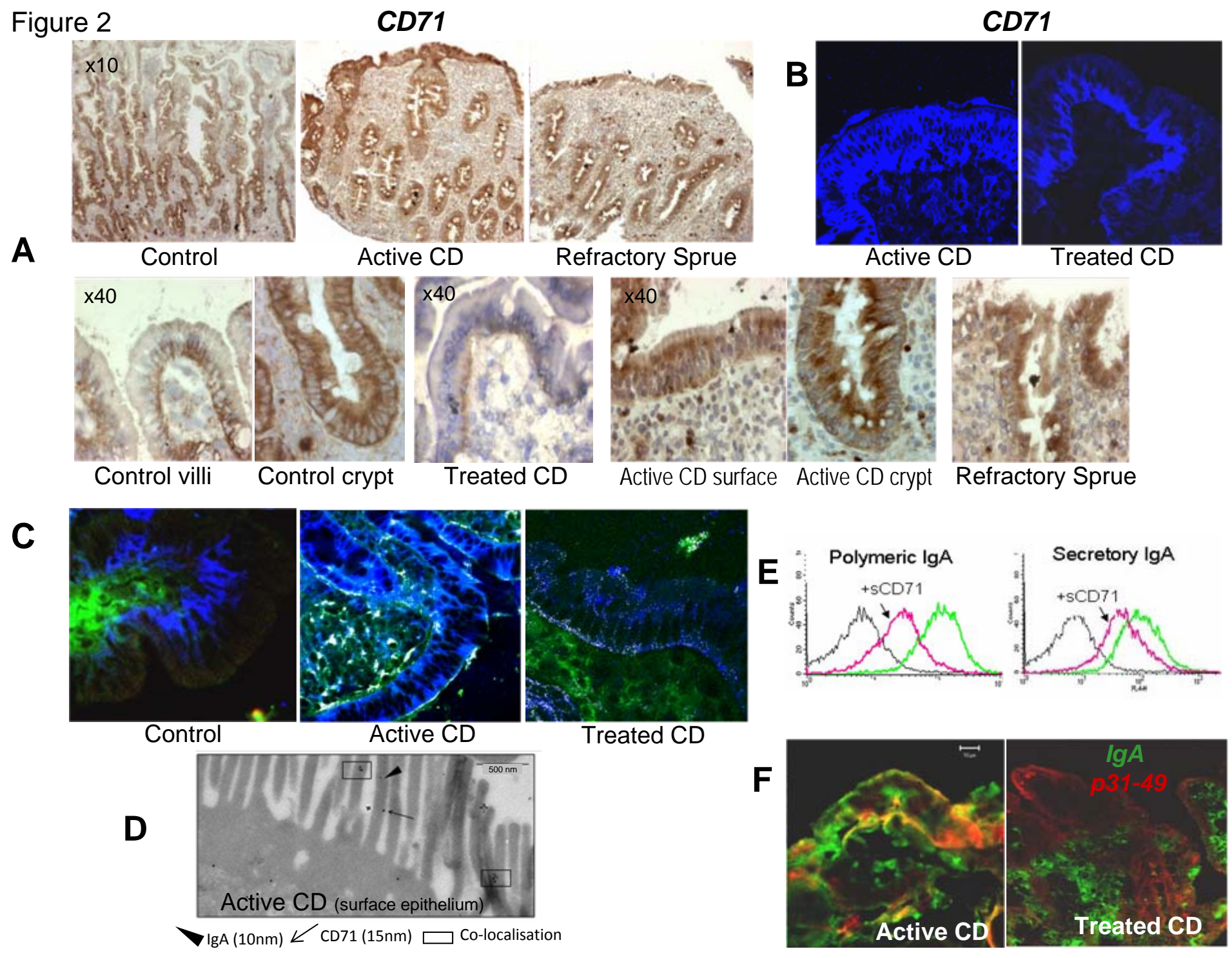




Figure 3

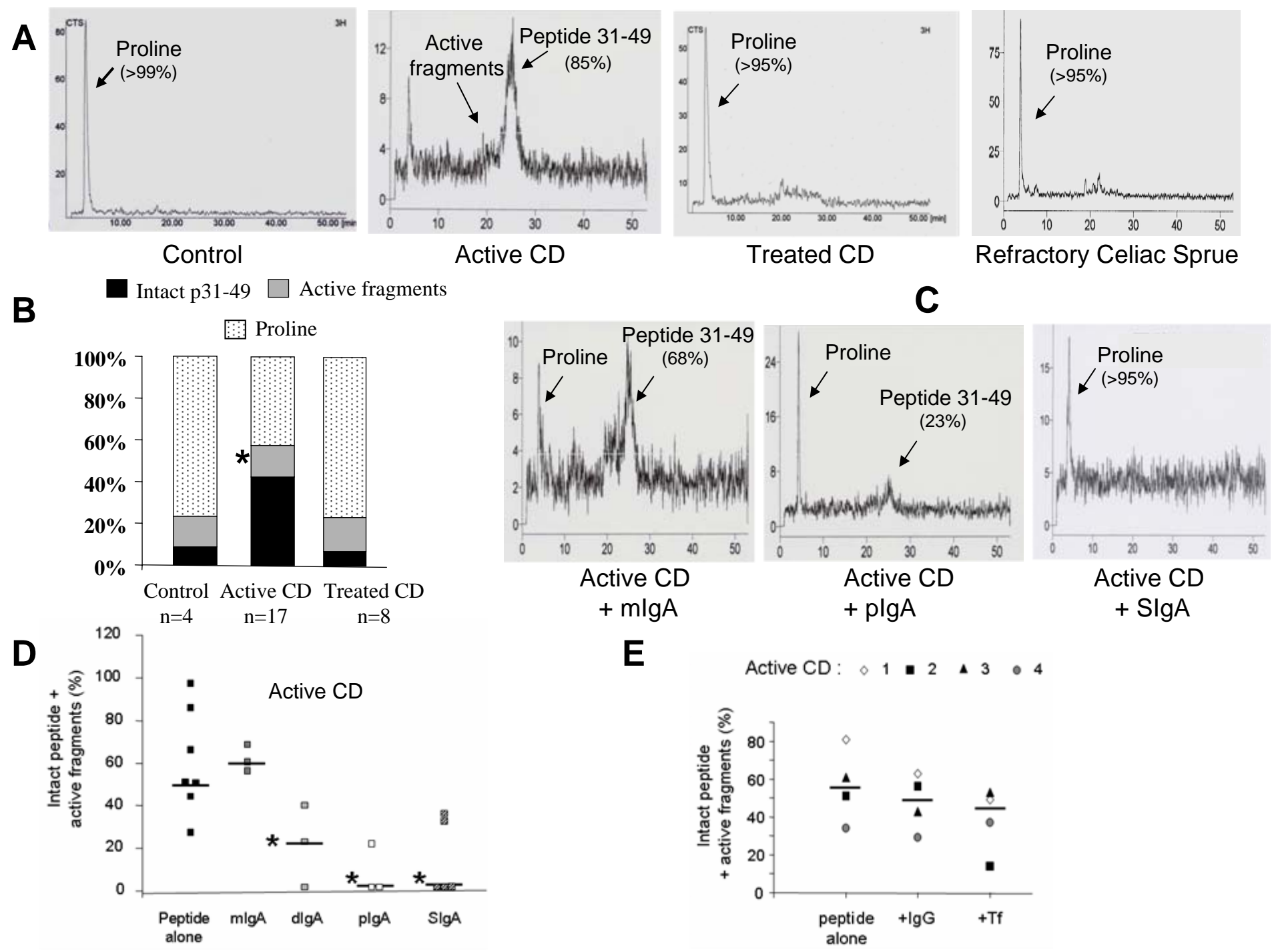
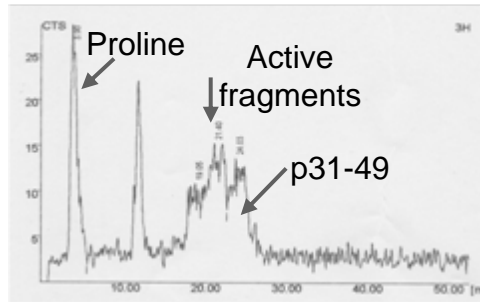


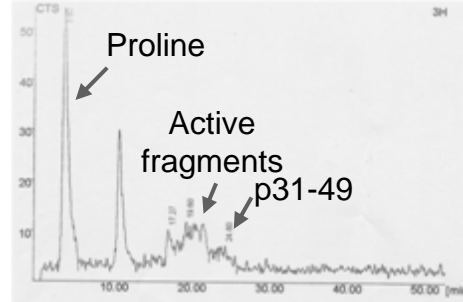
Figure 4

*Active CD patient 1*

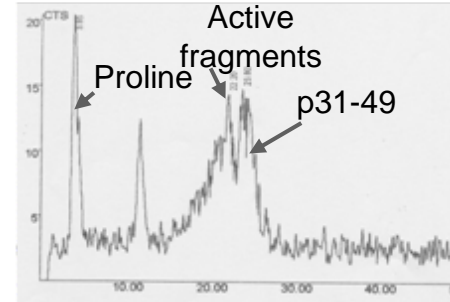
**A**



Peptide alone

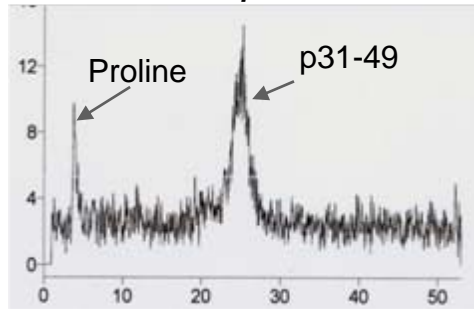


sCD71

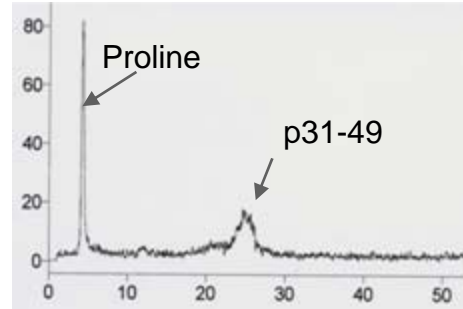


sCD89

*Active CD patient 2*

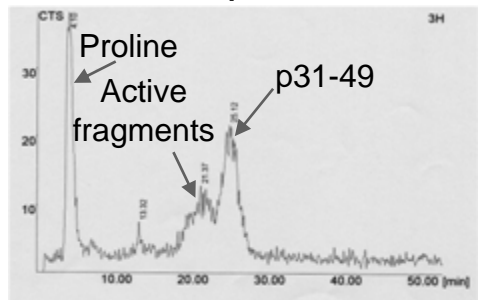


Peptide alone

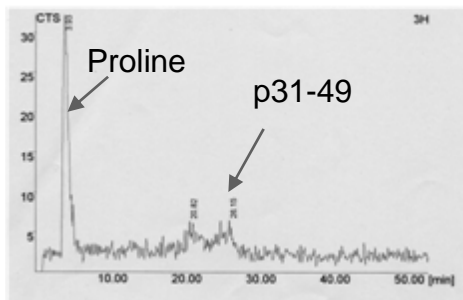


sCD71

*Active CD patient 3*



Peptide alone



sCD71

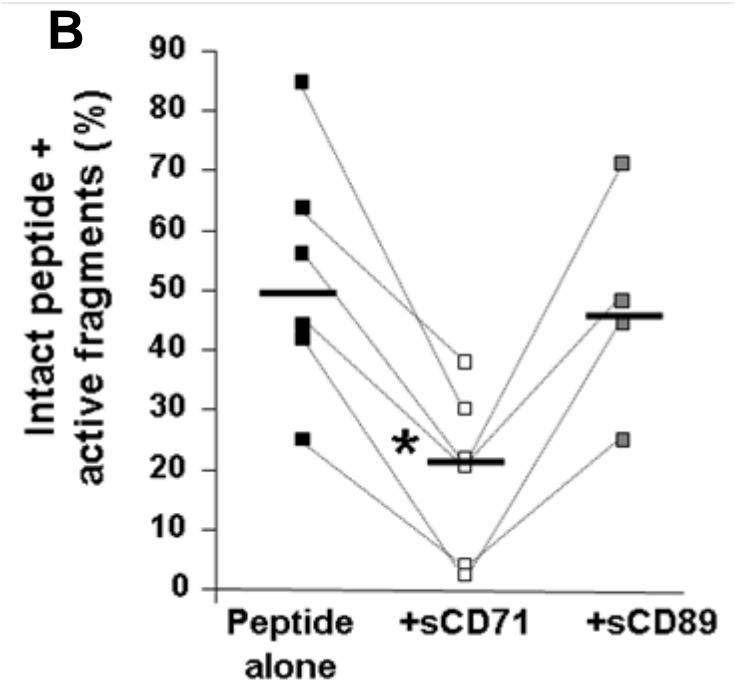


Figure 5

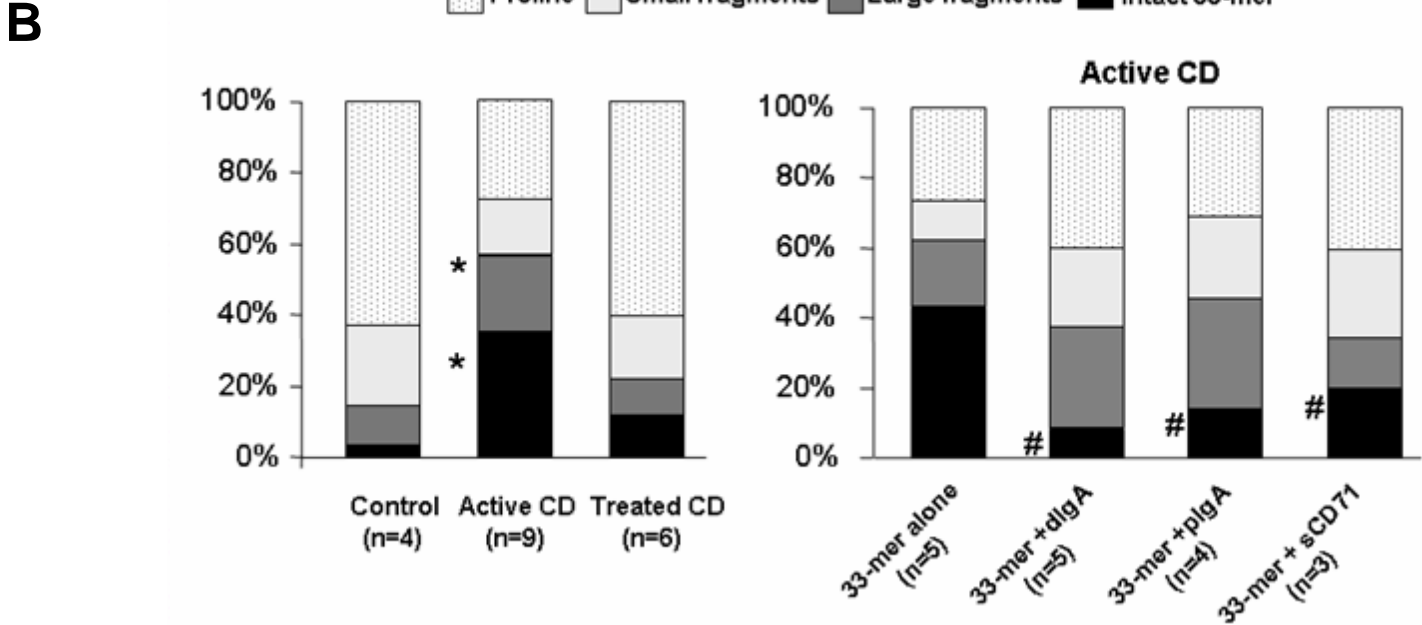
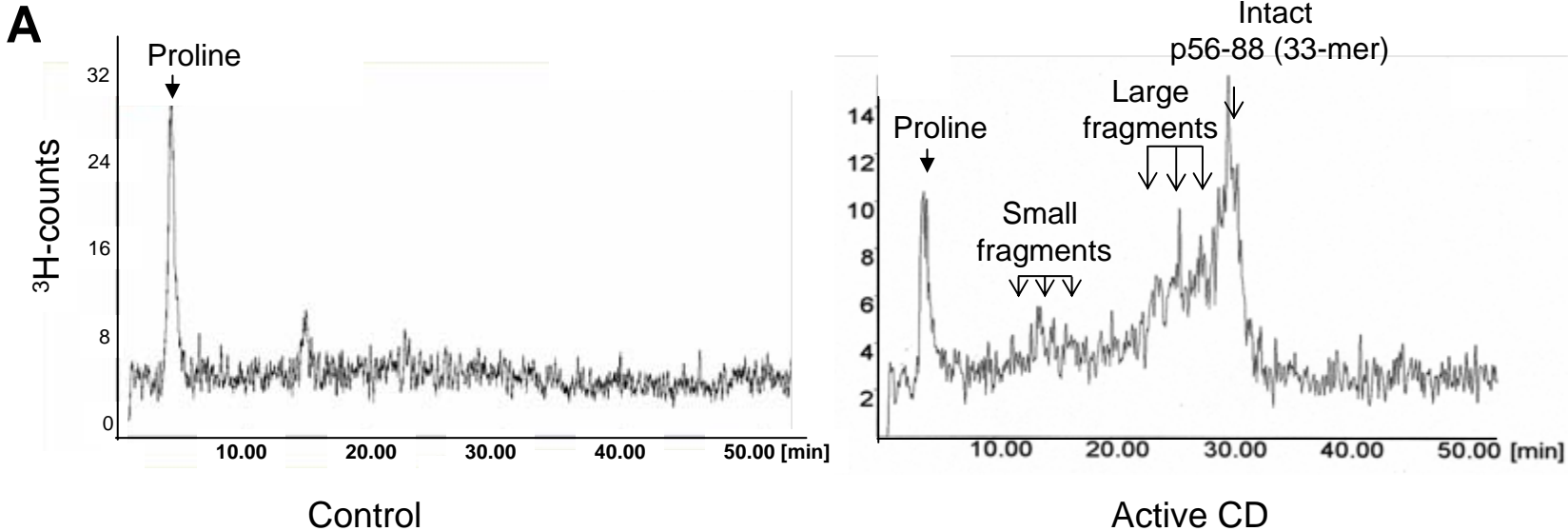
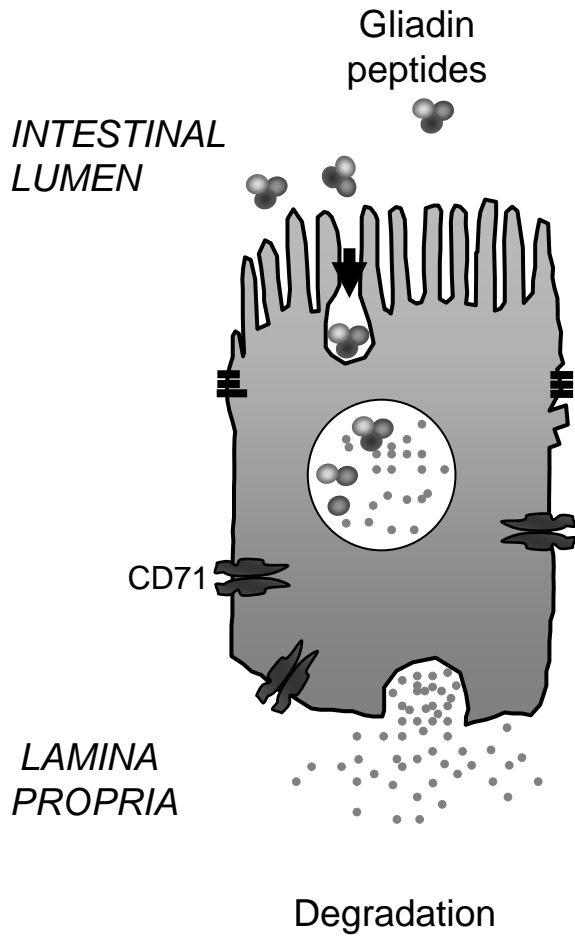
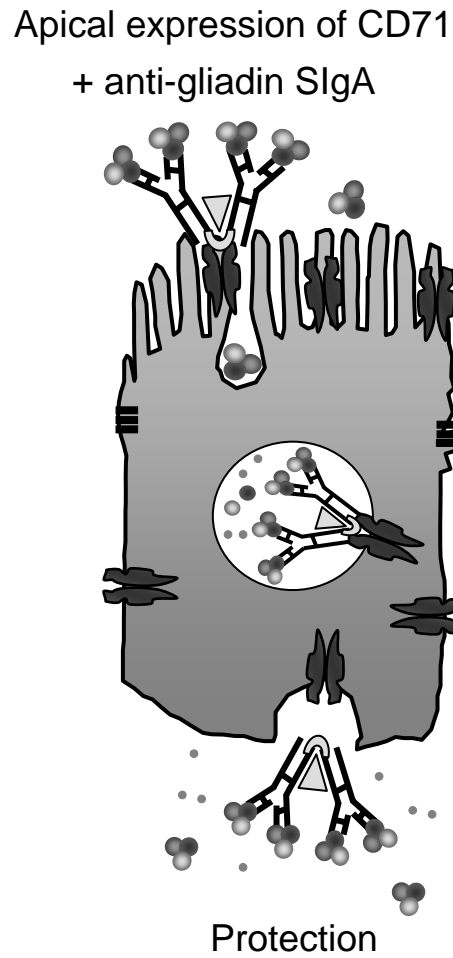


Figure 6

**Healthy individuals**



**Active celiac disease**



**Treatment strategy ?**

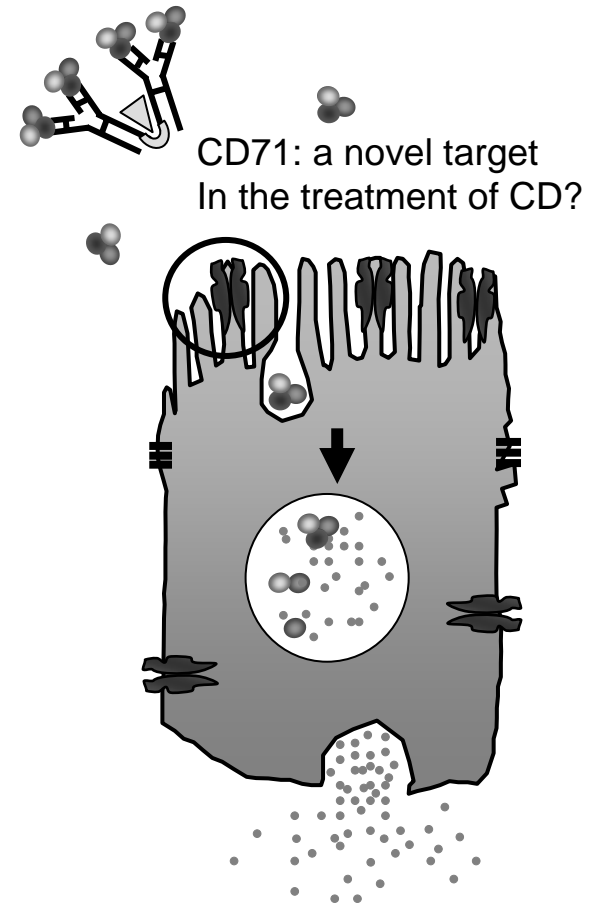


Figure S1

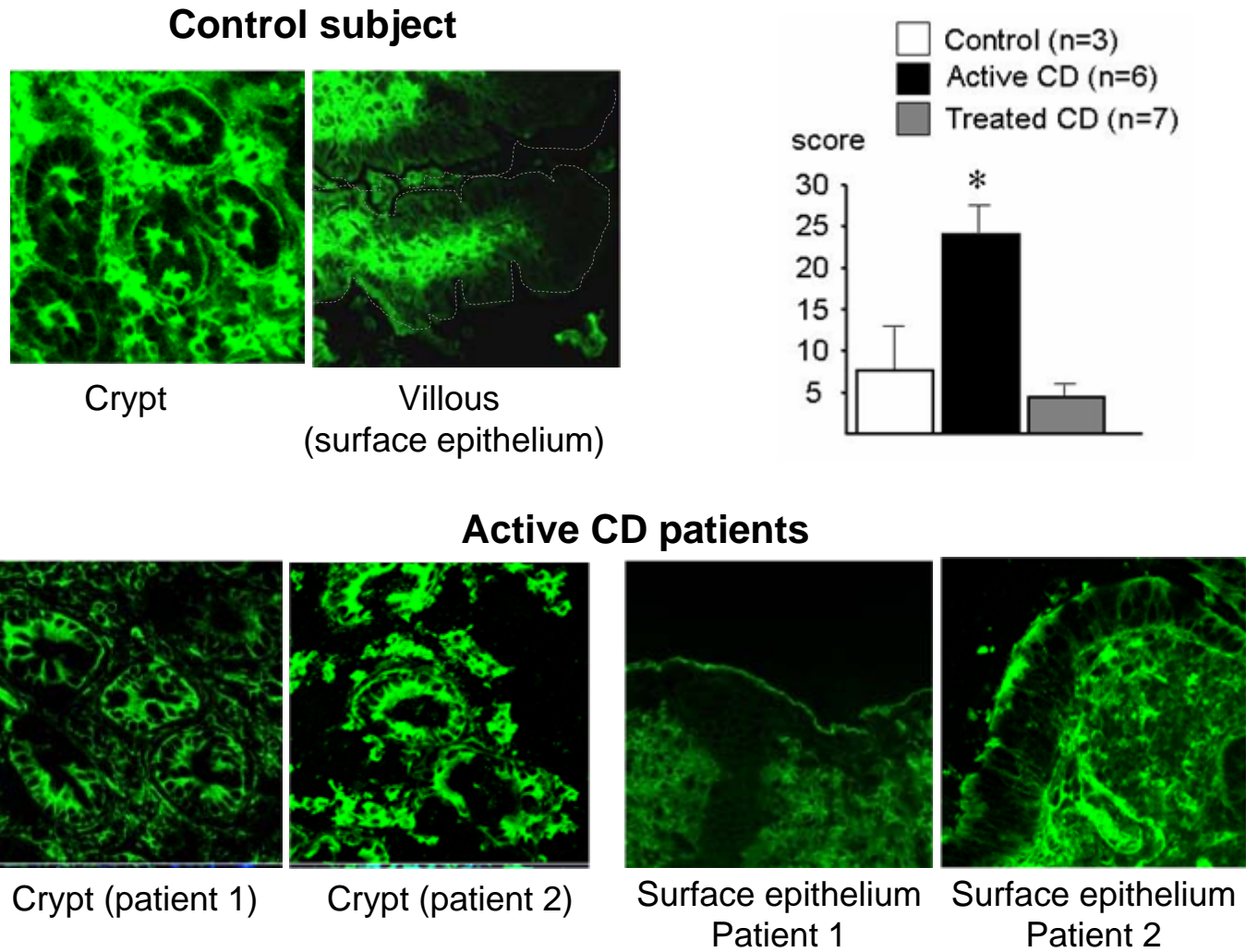
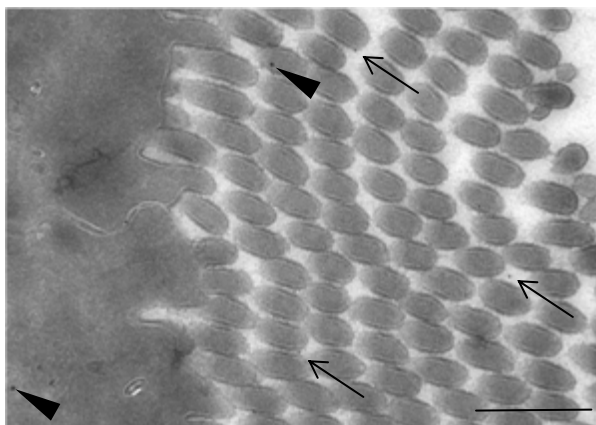


Figure S2

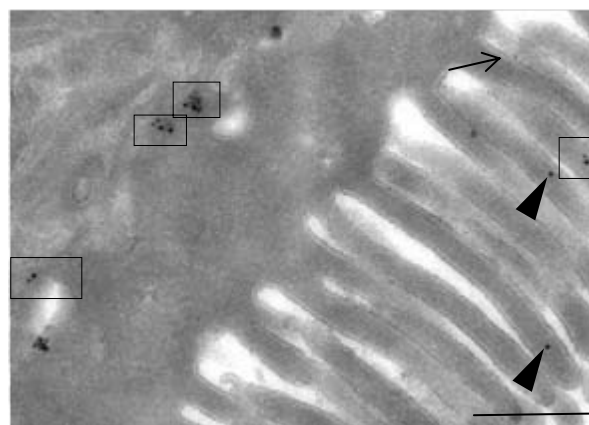
**Control subject**

Crypt epithelium



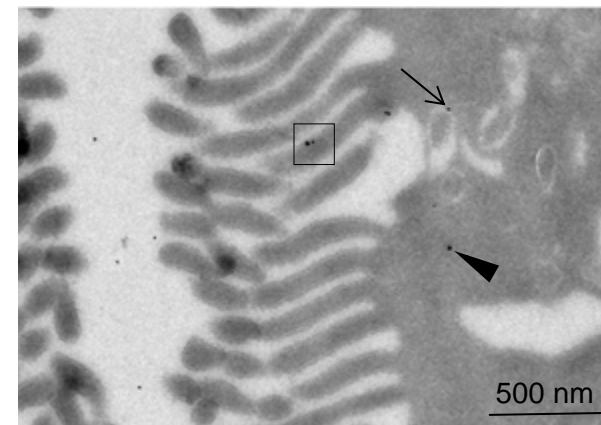
**Active CD patient 1**

Crypt epithelium

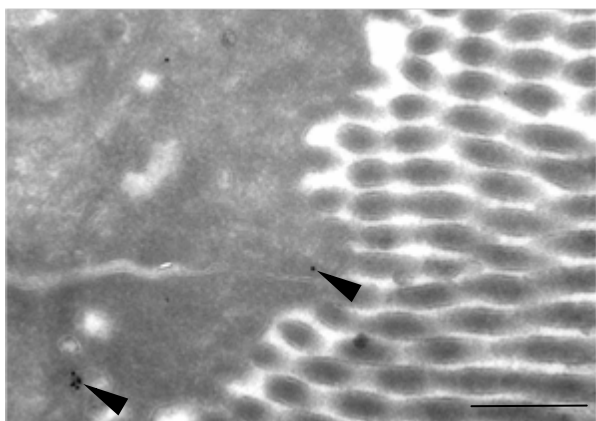


**Active CD patient 2**

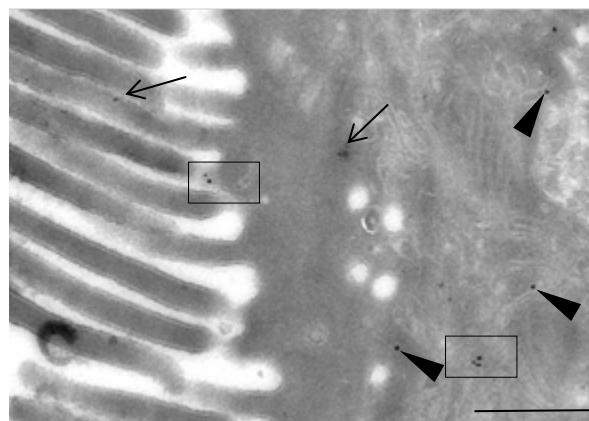
Crypt epithelium



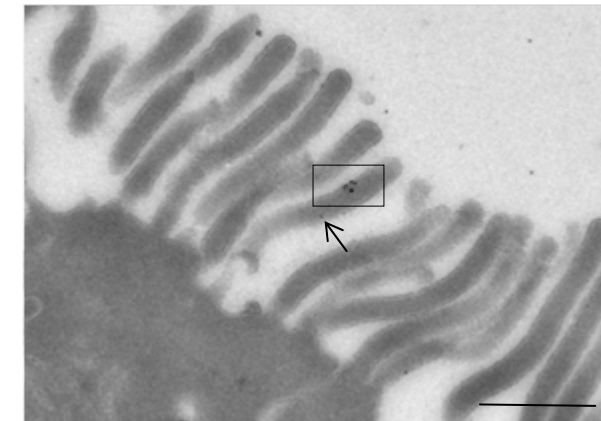
Villous epithelium



Surface epithelium



Surface epithelium



← IgA (10nm)

▴ CD71 (15nm)

□ Co-localisation IgA/CD71



Figure S3

