



HAL
open science

ER beta inhibits proliferation and invasion of breast cancer cells.

Gwendal Lazennec, Damien Bresson, Annick Lucas, Corine Chauveau,
Françoise Vignon

► **To cite this version:**

Gwendal Lazennec, Damien Bresson, Annick Lucas, Corine Chauveau, Françoise Vignon. ER beta inhibits proliferation and invasion of breast cancer cells.. *Endocrinology*, 2001, 142 (9), pp.4120-30. inserm-00153812

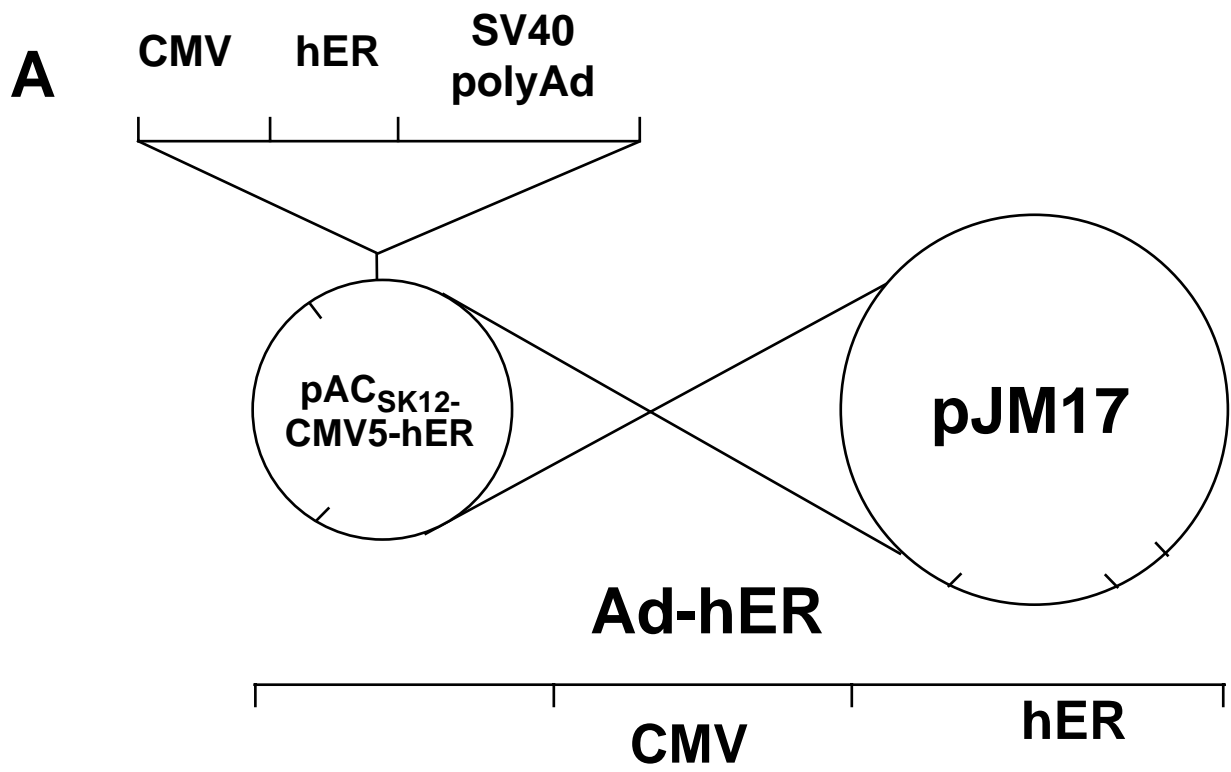
HAL Id: inserm-00153812

<https://inserm.hal.science/inserm-00153812>

Submitted on 12 Jun 2007

HAL is a multi-disciplinary open access archive for the deposit and dissemination of scientific research documents, whether they are published or not. The documents may come from teaching and research institutions in France or abroad, or from public or private research centers.

L'archive ouverte pluridisciplinaire **HAL**, est destinée au dépôt et à la diffusion de documents scientifiques de niveau recherche, publiés ou non, émanant des établissements d'enseignement et de recherche français ou étrangers, des laboratoires publics ou privés.



B

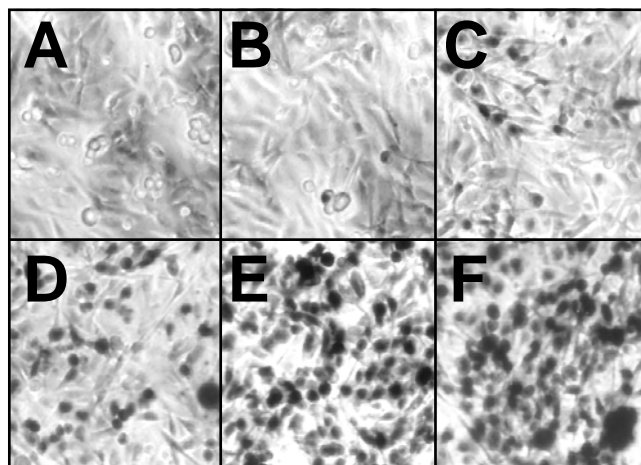
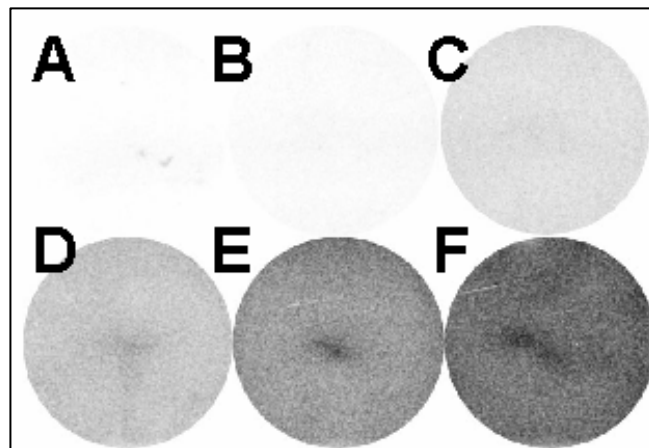


Fig. 1

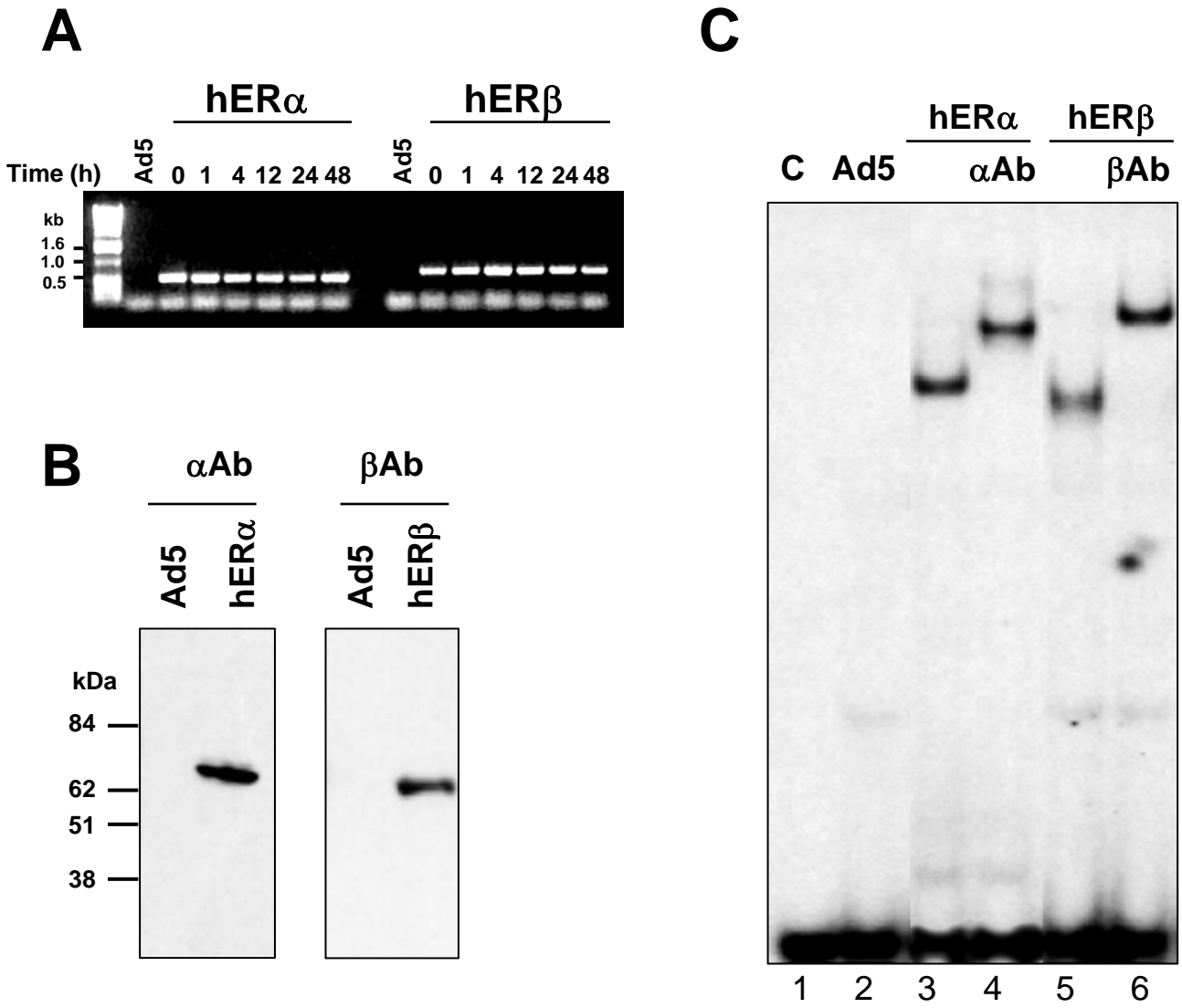


Fig. 2

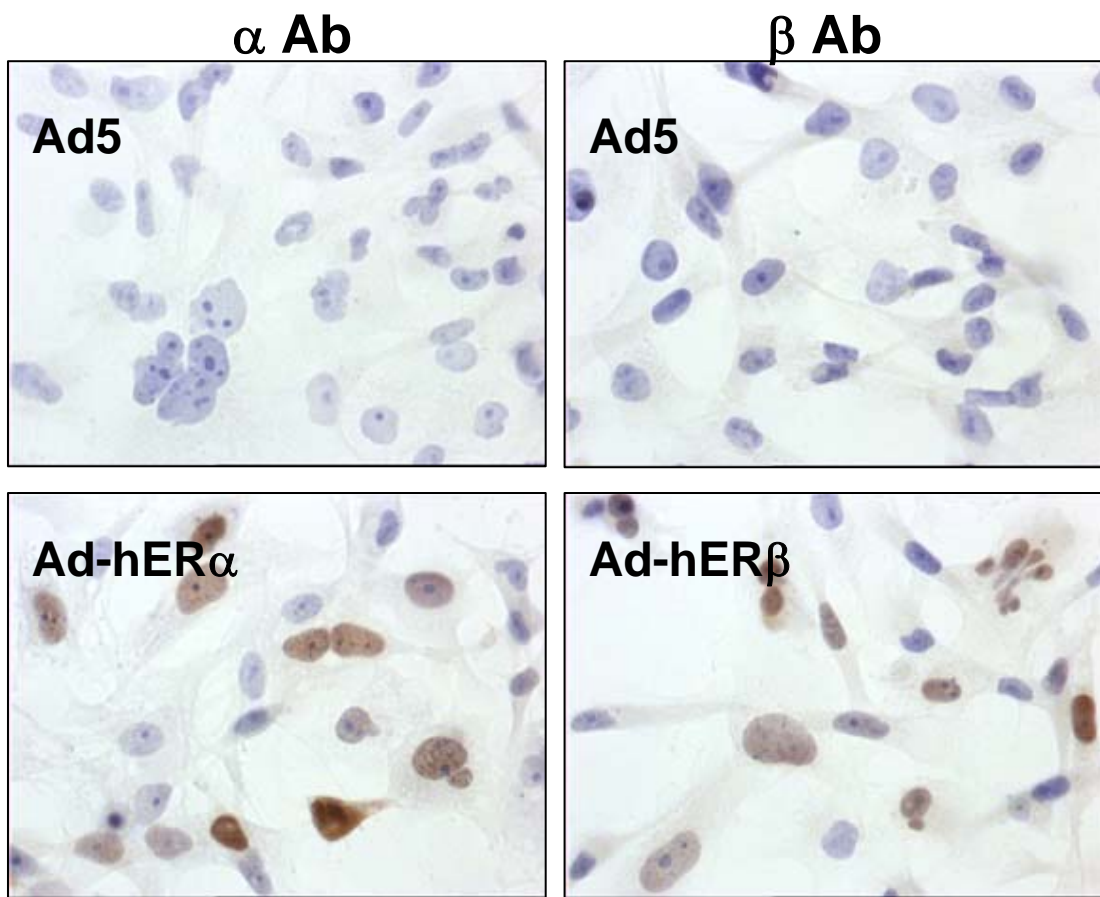


Fig. 2D

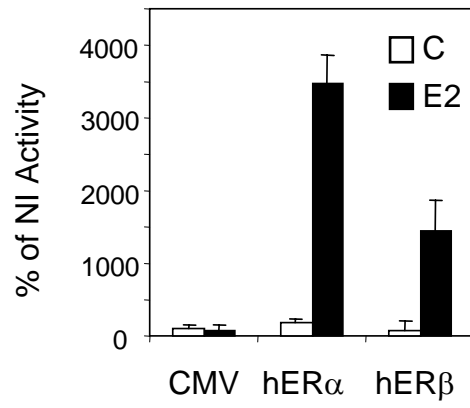
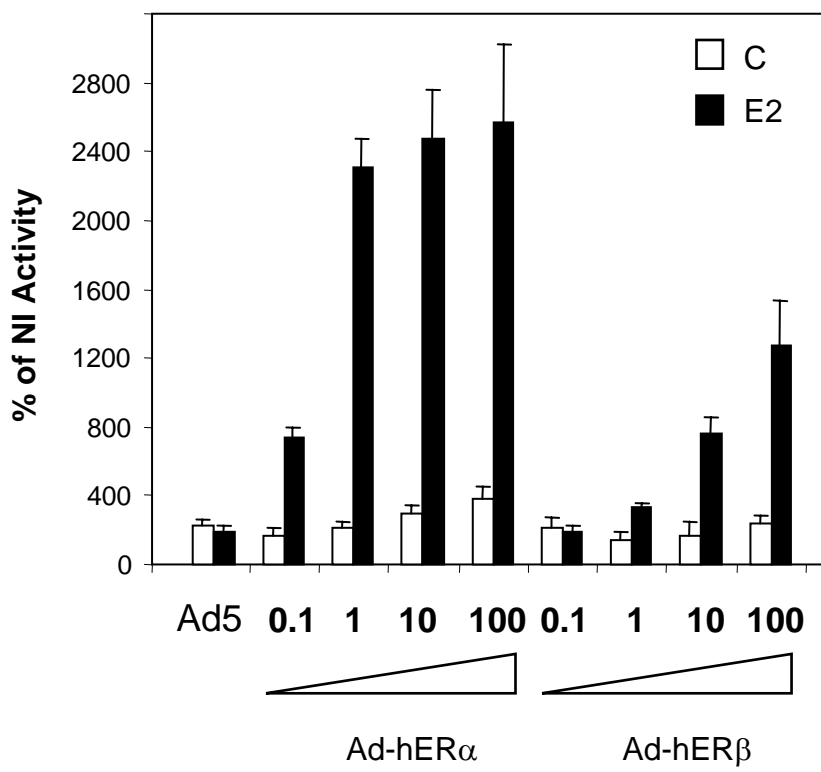
A**B**

Fig. 3

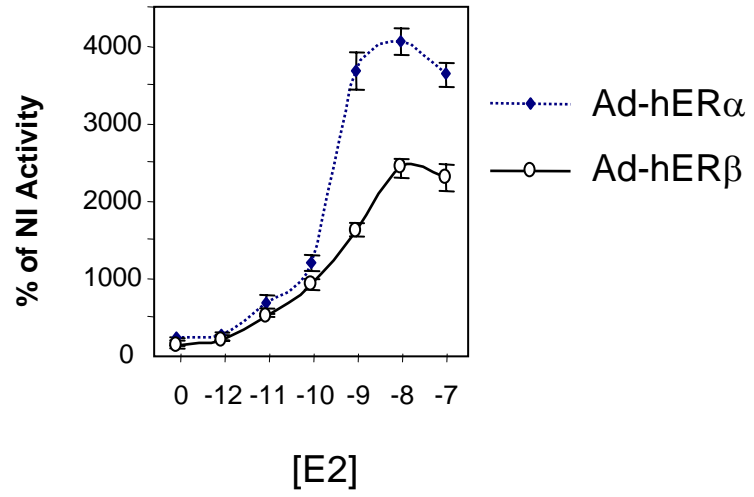
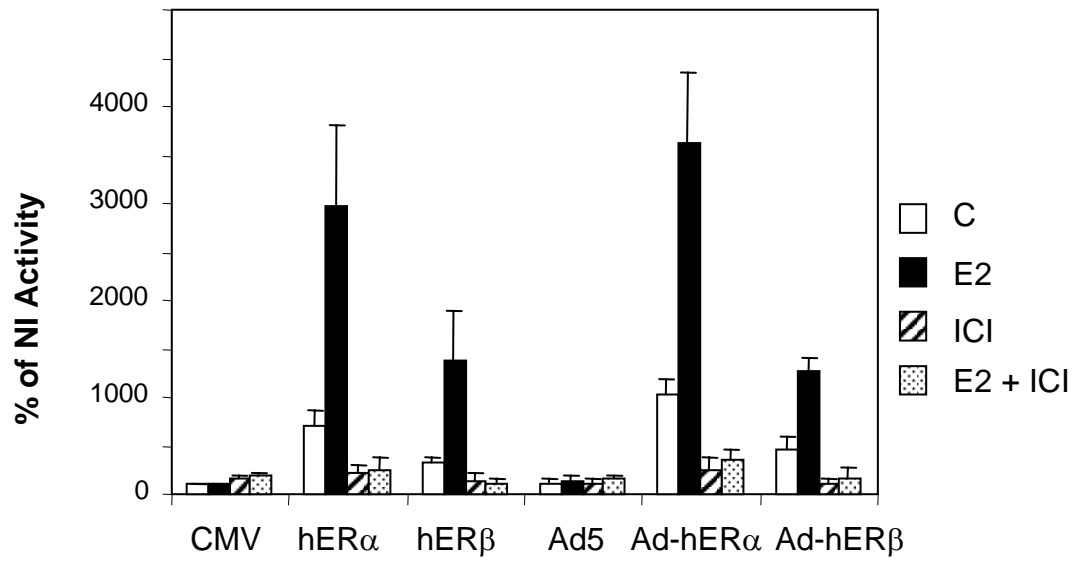
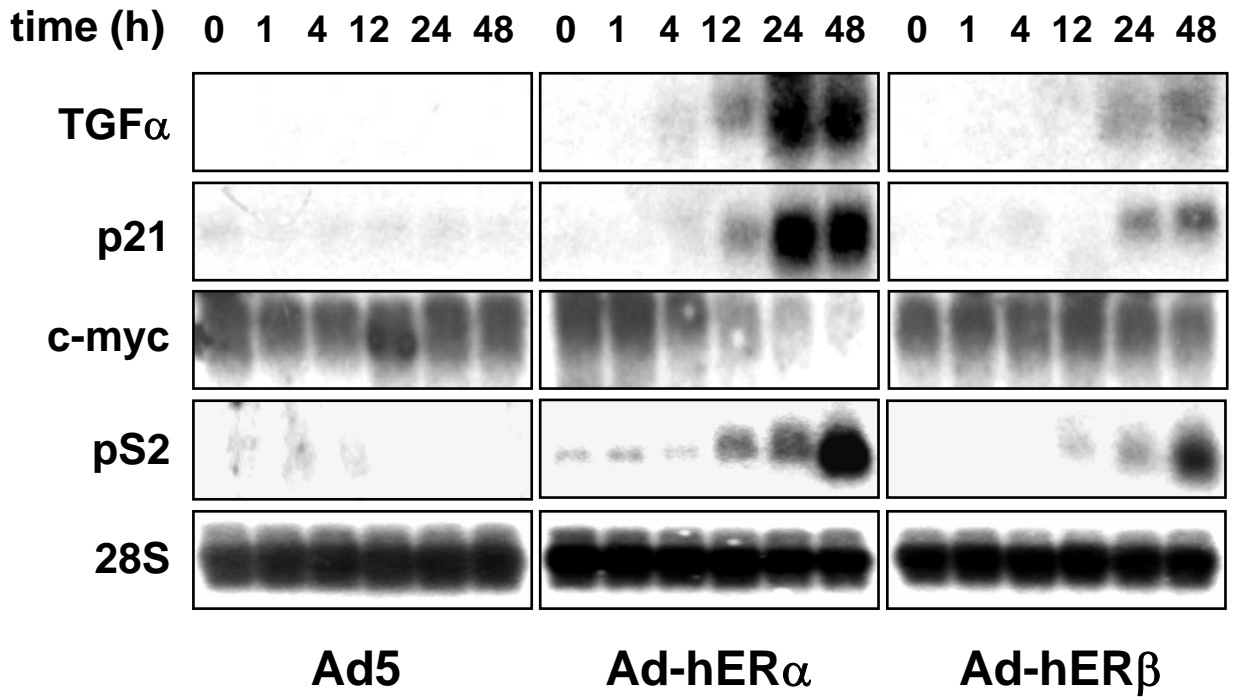
C**D**

Fig. 3

A



B

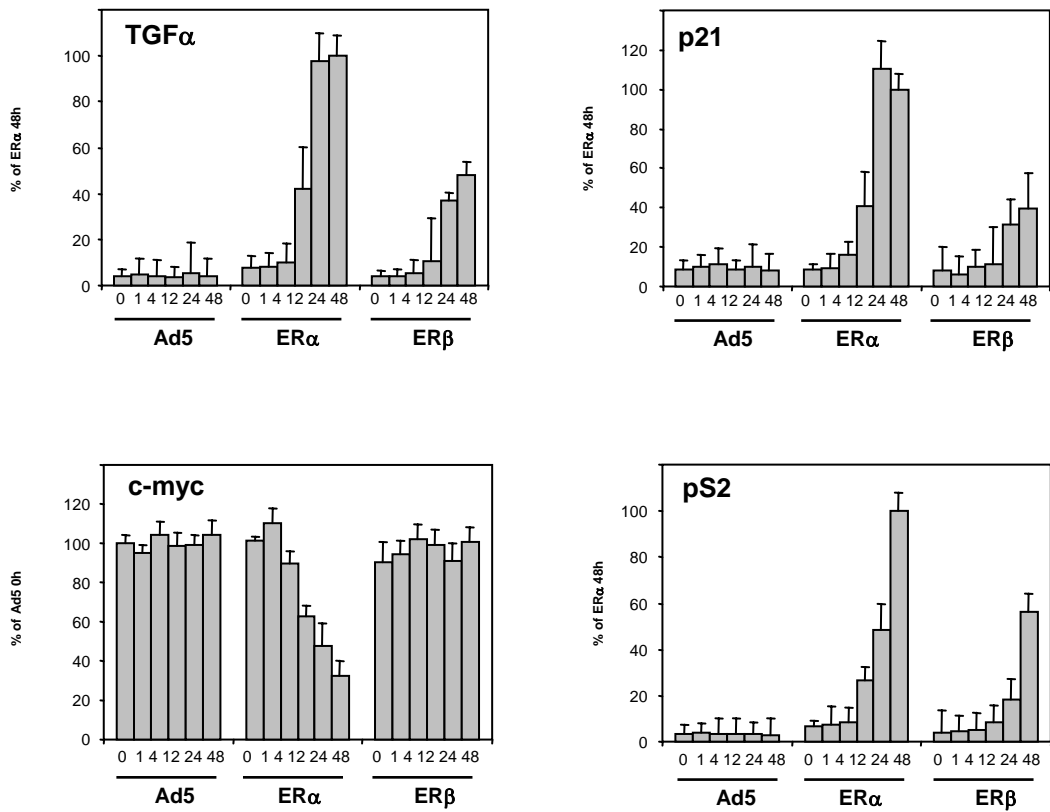


Fig. 4

C

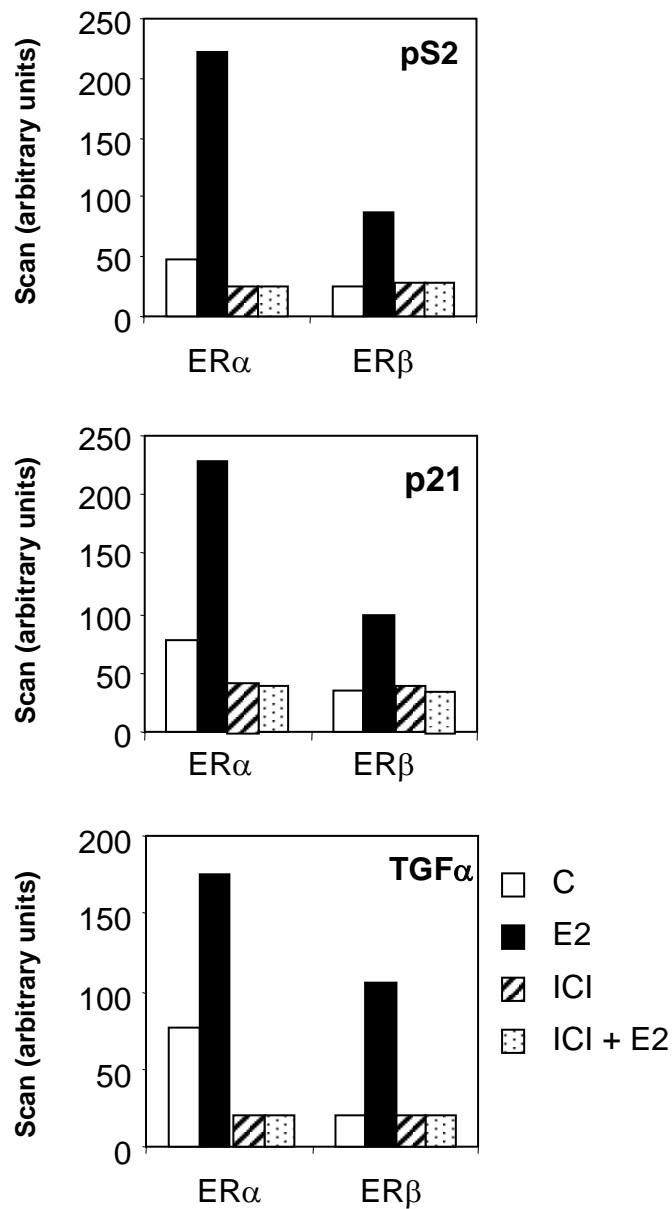
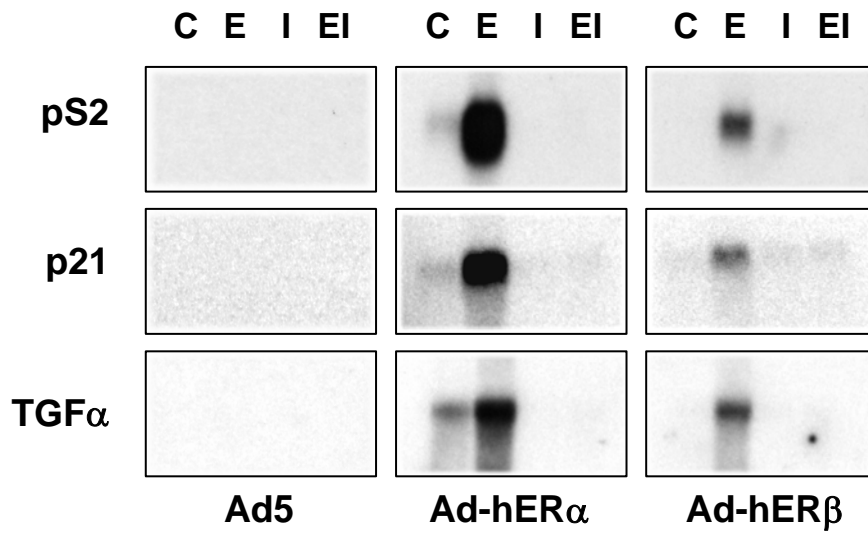


Fig. 4

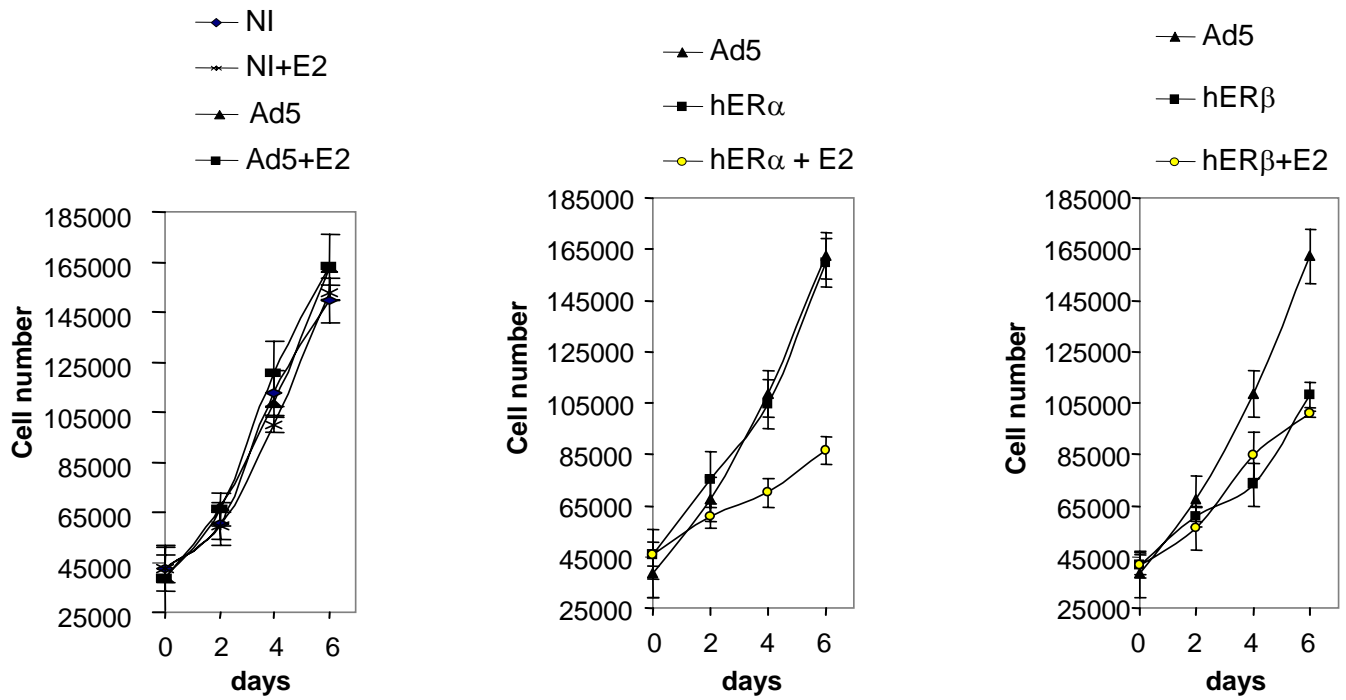
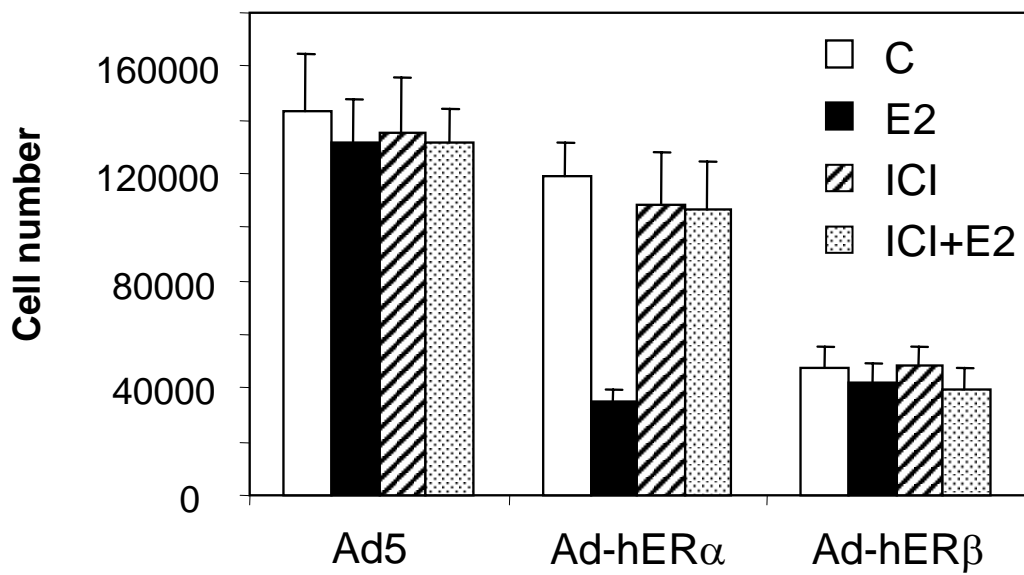
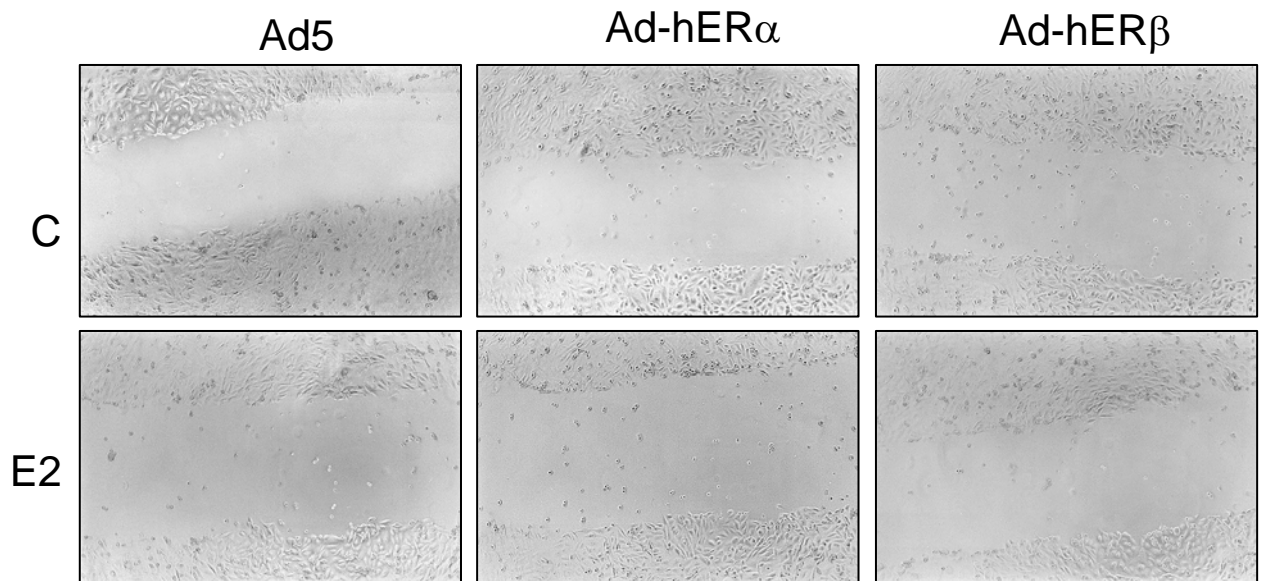
A**B**

Fig. 5

A

t = 0



t = 18h

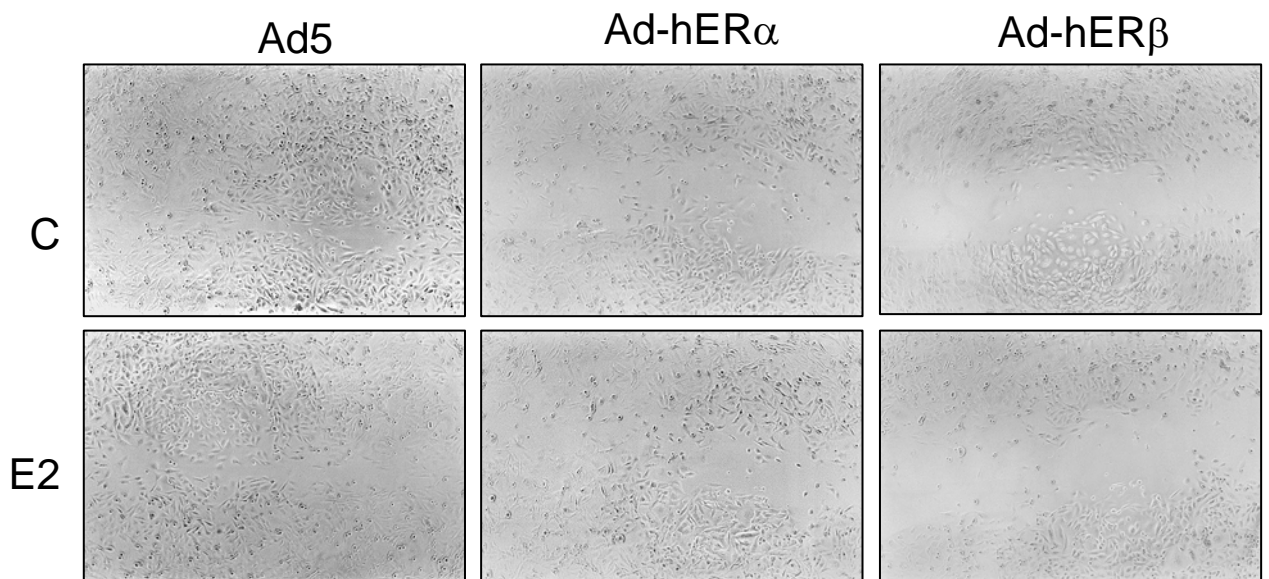


Fig. 6

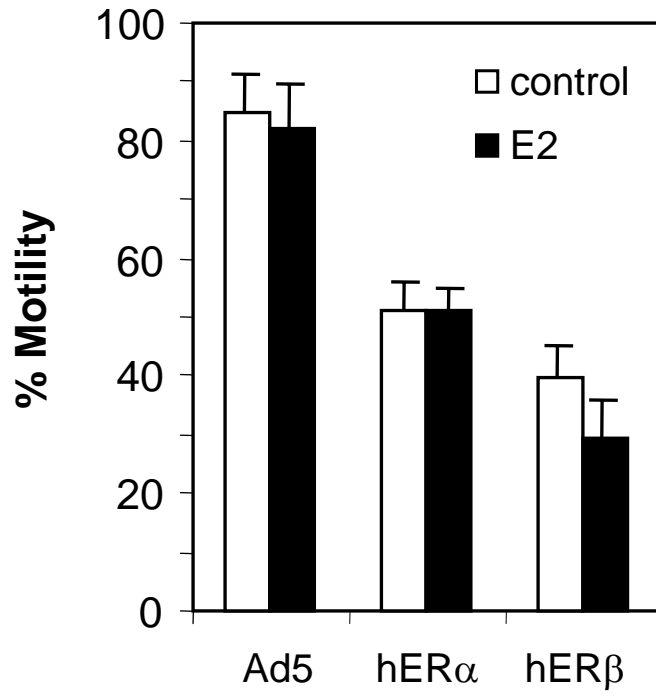
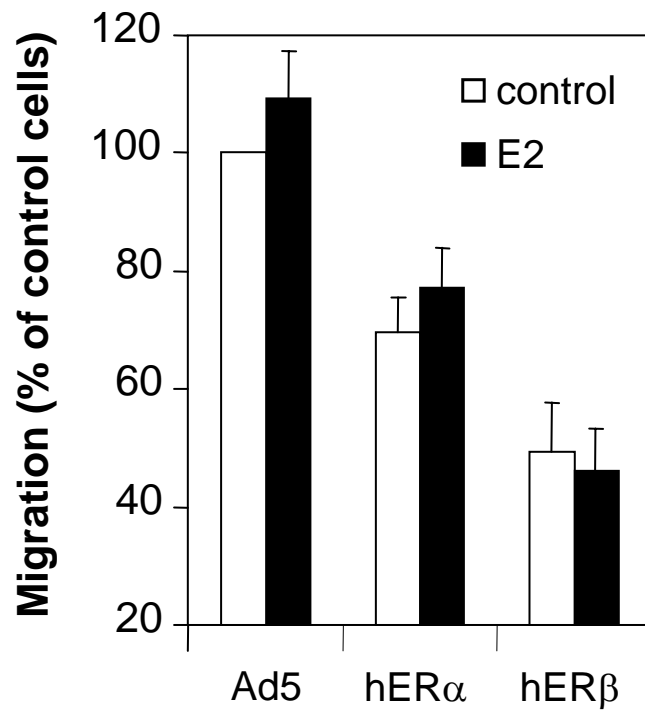
B**C**

Fig. 6

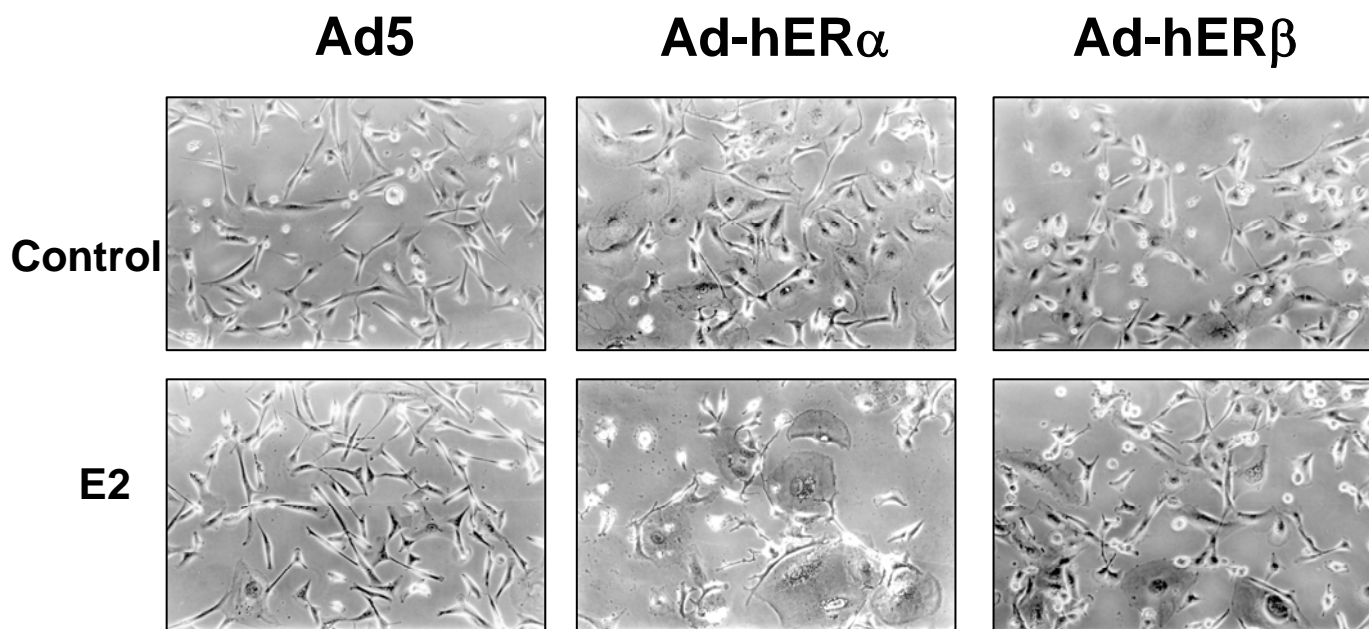


Fig. 7