



**HAL**  
open science

**Effects of irradiance and stimulus duration on early gene expression (Fos) in the suprachiasmatic nucleus: temporal summation and reciprocity.**

Ouria Dkhissi-Benyahya, Bruno Sicard, Howard M. Cooper

► **To cite this version:**

Ouria Dkhissi-Benyahya, Bruno Sicard, Howard M. Cooper. Effects of irradiance and stimulus duration on early gene expression (Fos) in the suprachiasmatic nucleus: temporal summation and reciprocity.. *Journal of Neuroscience*, 2000, 20 (20), pp.7790-7. inserm-00131432

**HAL Id: inserm-00131432**

**<https://inserm.hal.science/inserm-00131432v1>**

Submitted on 16 Feb 2007

**HAL** is a multi-disciplinary open access archive for the deposit and dissemination of scientific research documents, whether they are published or not. The documents may come from teaching and research institutions in France or abroad, or from public or private research centers.

L'archive ouverte pluridisciplinaire **HAL**, est destinée au dépôt et à la diffusion de documents scientifiques de niveau recherche, publiés ou non, émanant des établissements d'enseignement et de recherche français ou étrangers, des laboratoires publics ou privés.

## **Effects of irradiance and stimulus duration on early gene expression (Fos) in the suprachiasmatic nucleus : temporal summation and reciprocity**

O. Dkhissi-Benyahya <sup>1</sup>, B. Sicard <sup>2</sup>, H.M. Cooper <sup>1</sup>

1) I.N.S.E.R.M. Unité 371, Cerveau et Vision, 18 Avenue du Doyen Lépine, 69675 Bron, France

2) Laboratoire de Mammalogie, I.R.D., Bamako, Mali

**ABBREVIATED TITLE :** Photon integration in the circadian system

### **Corresponding Author :**

Dr. H.M. Cooper  
I.N.S.E.R.M. Unité 371  
Cerveau et Vision  
18 Avenue du Doyen Lépine  
69675 Bron, France  
tel. 33-472.91.34.69  
fax. 33-472.91.34.61  
email cooper@lyon151.inserm.fr

### **Acknowledgements**

We would like to thank Christel Merrouche and Naura Chounlamountri for technical assistance. This research was funded by grants from Human Frontier (RG95/68), Biomed2 (BMH4-CT972327) and NATO (#950334)

## Abstract

The daily behavioral, physiological, and hormonal rhythms in mammals are regulated by an endogenous circadian clock located in the suprachiasmatic nucleus (SCN) and are synchronized by the natural 24h light-dark (LD) cycle. We studied the response properties (threshold, saturation, and linearity) of the photic system to irradiance by assaying light induction of Fos, the protein product of the immediate early gene *c-fos*. Fos expression was quantified by image analysis in the SCN and in the retina. Fos expression in the SCN and retina are unrelated since the response differs in terms of threshold, saturation, and range. In the SCN, Fos expression increases proportionately to increases in both irradiance and duration of light exposure. The photic system shows a linear temporal integration of photons for durations ranging from 3 seconds to 47.5 minutes. The principal result of this study shows that in the SCN, Fos expression is directly proportional to the total number of photons rather than to irradiance or duration alone (reciprocity), and that integration occurs over a range of 5 log units of photon number. This report provides the first demonstration that the mechanism of photon integration by the circadian system is expressed at a cellular level in the SCN.

**Key words.** Suprachiasmatic nucleus, immediate early genes, circadian system, photoreception, retina, endogenous rhythms

HAL author manuscript inserm-00131432, version 1

The characterization of the mechanisms by which light influences the phase of the circadian oscillator is one of the major problems which must be addressed in order to understand circadian physiology (Pittendrigh, 1981). Studies in rodents suggest that the coupling of light information to intracellular signaling pathways in the SCN involves the proto-oncogene *c-fos*, an immediate early gene and its product, the phosphoprotein Fos: (1) The photic induction of *c-fos* is mainly restricted to the ventrolateral part of the SCN, in the region of retinal terminals (Aronin et al., 1990; Earnest et al., 1990; Rusak et al., 1990). (2) Pharmacological agents that block behavioral phase shifts also block the photic stimulation of *c-fos* in the SCN of hamster (Vindlacheruvu et al., 1992; Rea et al., 1993, Colwell et al., 1993a). (3) Light-induced phase shifts of rat circadian locomotor activity are prevented by intracerebroventricular injections of antisense oligodeoxynucleotides to both *c-fos* and *JunB* (Wollnik et al., 1995). (4) Light-induced Fos expression is characterized by a phase dependence similar to that for light-induced phase shifts of locomotor activity (Aronin et al., 1990; Rusak et al., 1990, 1992; Kornhauser et al., 1990, 1992; Colwell and Foster, 1992; Swchartz et al., 1994; Cooper et al., 1998).

In both animals and humans the amplitude of circadian responses such as a phase shift of locomotor activity and light suppression of plasma melatonin are correlated with the level of irradiance (Brainard et al., 1988; Kornhauser et al., 1990; Foster et al., 1991; Nelson and Takahashi, 1991a, b; Bauer, 1992; Yoshimura and Ebihara, 1996; Boivin et al., 1996). In addition, the degree of *c-fos* mRNA or Fos protein induction is correlated with irradiance and the amplitude of a phase shift, although only a limited range of irradiance levels have been studied (Kornhauser et al., 1990; Shimomura et al., 1998; Lupi et al., 1999).

In contrast, relatively few studies have attempted to quantify responses of the circadian system to stimulus duration. A single short pulse of light (< 1 sec) fails to induce a phase shift of locomotor activity, which generally requires longer durations of light exposure. Studies of temporal response properties have suggested that the circadian system may function as a « photon counter » by integrating the number of photons in the light stimulus over extended periods of time (Takahashi et al., 1984; Nelson and Takahashi, 1991a, 1999). For stimulus durations in the range of 300 sec, the amplitude of a behavioral phase shift is directly dependent on the total photon number in the light stimulus. However, the efficiency of the system is decreased for short (<30 sec) and long (1 h) duration pulses.

The stimulus response relationships for irradiance and duration in relation to *c-fos* induction in the SCN have not been clearly defined. Since both behavioral phase shifts and *c-*

*fos* induction are dependent on irradiance, the question arises as to whether temporal integration of photons, and reciprocity for irradiance and duration, hold for light-induced *c-fos* expression. The issue of whether reciprocity for stimulus irradiance-duration is expressed at a cellular level is important, since the mechanism and site of photon integration in the circadian system is unknown.

## Material and Methods

### Animals and photic stimulation

Gerbils (*Taterillus petteri*) were captured in the field in the region of Bamako, Mali 3-4 weeks before testing and maintained in the laboratory in individual cages on a diet of rodent pellets and apples. This species was used as a model for these investigations since substantial data are available on Fos induction (Cooper et al., 1998) and this rodent is of considerable economic importance (Sicard et al., 1999). All animals were kept for at least 10 days under a 12-h light/12-h dark cycle using fluorescent lights (approximately 300 lux) prior to the experiments. On the day of testing, the light-dark cycle was discontinued and the gerbils were maintained in constant darkness. Thus, the time of that light onset would normally have occurred (ZT0) was used as the beginning of the subjective day (CT0; Schwartz et al., 1994). Animals were stimulated with a light pulse at CT16, since this time corresponded to the period of the circadian cycle of maximum amplitude of Fos expression in the gerbil (Cooper et al., 1998).

In the series tested for irradiance, animals (n=41) were exposed to a 15 minute monochromatic pulse of light ( $\lambda = 500$  nm) at different irradiance levels. The wavelength and level of irradiance was varied using interference and neutral density filters (see below for details of light stimulation and measurement). Light irradiance extended over 7 log units from  $3.8 \times 10^{-5}$  to  $3.8 \times 10^2$   $\mu\text{watts}/\text{cm}^2$ . Following the light pulse, animals were returned to complete darkness and perfused 60 minutes after the beginning of the light pulse.

In the series tested for stimulus duration, animals (n=45) were exposed to a 500 nm monochromatic pulse of light at a constant irradiance ( $3.8 \times 10^{-1}$   $\mu\text{watts}/\text{cm}^2$ ) but of variable duration in 1/2 log unit steps (3, 9, 15, 28, 90, 285, 900, 2850 seconds). Subsequently, animals were returned to complete darkness until perfusion which was performed 60 minutes after the beginning of the light pulse. For each time point of each series, 3-4 animals were examined for the presence of Fos protein in the SCN and in the retina using

immunohistochemistry. All handling and transfer of the animals were performed in light tight rooms in complete darkness. Control animals (6 for each series) were handled identically, but were not exposed to light. Data for the analysis of Fos induction in the SCN and retina were obtained from the same individual animals of each of the above series. All treatment of animals was in strict accordance with current international regulations on animal care, housing, and experimentation.

The stimulus apparatus used a tungsten-halogen light source (24V-150W) equipped with condenser and collimating lenses and an infrared absorbing filter. Monochromatic light was produced with a Schott interference filter and irradiance varied with neutral density filters (Kodak). Peak irradiance and spectral output ( $\lambda = 500$  nm, half band width 9.34 nm) were measured in the stimulation chamber using an International Light model IL 700 photometer and a spectrophotometer (Ocean Optics S2000). Irradiance of the stimulus was measured in  $\mu\text{watt}/\text{cm}^2$  and converted to photons/ $\text{cm}^2/\text{s}$  based upon the energy per photon for  $\lambda = 500$  nm. All results are presented as both photon flux and  $\mu\text{watt}/\text{cm}^2$ . The cylindrical chamber (diameter=14 cm, height=7 cm) was coated with reflective neutral white enamel. Light was projected into the stimulation chamber through an opal diffuser (3 mm thick) The homogeneity of transmission over the surface of the diffuser and the spectral reflectance of the chamber were verified with the spectrophotometer. The entire stimulator (light source and chamber) was enclosed in a light tight box. Onset and duration of the light pulse were controlled with electronic timers.

### **Fos Immunohistochemistry.**

Animals were rapidly anesthetized in complete darkness with halothane followed by an intraperitoneal injection of nembutal (100 mg/kg i.p.) and then perfused intracardially (in dim light with the head covered) with warm (37°C) heparinized saline followed by 300 ml of Zamboni's fixative at 4°C. The anesthesia always began 60 minutes after the beginning of the light stimulation, and perfusion was initiated within 2-3 minutes thereafter. Brains and eyes were post-fixed overnight in the same fixative at 4°C, removed from the skull and subsequently stored in phosphate buffer with 0.1% sodium azide. Prior to sectioning, brains were cryoprotected in 30% sucrose phosphate buffer for 24 hours. Serial coronal sections were made at 40  $\mu\text{m}$  on a freezing microtome. The retinas were removed from the eye, dissected free from the pigment epithelium and the vitreous cleaned away. Free floating retinas were processed identically to brain sections for Fos immunohistochemistry. All sections of series 1 and 2 were processed simultaneously to obtain identical levels of tissue

staining for data analysis. Endogenous peroxidase was first suppressed using a solution of 50% ethanol in saline with 0.03% H<sub>2</sub>O<sub>2</sub>. Free floating sections were briefly rinsed in phosphate buffered saline (0.01M, pH 7.2) containing 0.3% triton and 0.1% sodium azide (PBSTA) and blocked with 1.5% normal goat serum. Sections were incubated in the anti-Fos primary antibody (Ab-5 rabbit antiserum, Oncogene Research Products, Calbiochem; dilution 1/10,000) for 3 days at 4°C. Immunoreactivity was visualized using a Vectastain ABC Elite kit (PK-6100, Vector Laboratories), followed by incubation in 0.2% 3,3'-diaminobenzidine- with 0.5% ammonium nickel sulfate and 0.003% H<sub>2</sub>O<sub>2</sub> in tris buffer (0.05M, pH 7.6). Controls sections were made by pre-incubation of the primary antibody with Fos peptide (Oncogene Research, #PP10), by omitting the primary antiserum or by replacement with normal serum at the same concentration as the antibody. No labeling was observed in control sections.

### **Quantitative analysis of Fos induction**

Quantitative levels of Fos-like immunopositive product in the SCN was determined using computer assisted image analysis (Biocom, Les Ulis, France). Optical density of label was measured bilaterally from digitized images of the SCN. This method is based on quantification of the total optical density of Fos labeling, defined as the integral sum of the surface area of all pixels in the SCN multiplied by their corresponding optical density value. The optical density was obtained by first subtracting the background density value determined from an adjacent area of hypothalamus which did not contain Fos-positive cells. The background for each animal was systematically measured and in general did not vary more than  $\pm 3\%$ . A threshold value was determined for detection of label significantly above the background level. The identity of the individual animals was unknown to the observer during the analysis and every section of the SCN of each series was analysed.

For valid comparative measures using image analysis, reduction of variations in the light source and the constancy of the histological methods are imperative. The intensity of the microscope light source (12V tungsten-halogen lamp) was held constant using a 220V stabilizer (500 VA) and a stabilized 220V-12V transformer. A fiber optic coupler between the light source and microscope was used to finely adjust light levels and provide uniform illumination. In order to assure uniformity over the digitized field, differences in density due to optical distortion were corrected by subtracting the brightfield background image (blank slide) from the digitized image. Room temperature was also held relatively constant, since the output response of digital cameras can vary with a difference of few degrees. The irradiance

level of the microscope field was verified between measures of each animal. Identical histological treatment is also important since previous tests have also shown that direct quantitative comparisons between different animals requires that all sections of the series be treated simultaneously in the same reaction trays.

### **Ganglion cell density counts**

The number of Fos-positive nuclei in the retinal ganglion cell layer was quantified in the following way. An estimation of the total number of Fos-positive nuclei was made by moving a 0.15 x 0.15 mm square graticule sample surface over the whole retina using a 25x objective. Five samples were collected within each of the four main retinal quadrants, upper, lower, nasal and temporal were counted. The number of cells was expressed as the mean number of cells per mm<sup>2</sup> of retina.

### **Choice of the analysis methods**

To analyse Fos induction in the SCN, we used an image analysis rather than the usual cell counting method for several reasons. 1) The analysis of the optical density is an objective measure since constant conditions and a threshold value are applied for the entire analysis. Counting cells is more subjective because a precise threshold value cannot be quantitatively fixed and can vary according to the observer, illumination and other factors. 2) Quantitative immunohistochemical studies of several neurotransmitters have shown that optical density is proportional to the quantity of immuno-label in tissue sections (Nabors et al., 1988; Jojich and Pourcho, 1996). Preliminary results in our laboratory also show that measures of optical density are linearly proportional to Fos peptide concentration (Rieux et al., in prep.). Cell counts do not take into account the difference in the quantity of label between cells, thus giving equal weight to lightly or densely stained cells. 3) The image analysis method of optical density allows determination of the total optical density in all sections of the SCN (and from a large sample of animals) whereas direct cell counts are usually only done in a small number of sections which may thus introduce bias. 4) Counting cells in thick sections without use of stereological methods is inaccurate.

For the retina, we counted cells localized in the ganglion cell layer rather than measuring the optical density. Due to the greater thickness of the retina (superior to 200 µm), as well as regional variations in thickness from center to periphery (and thus variations in background), plus scattered deposits of pigment epithelium, it is difficult to apply a constant threshold value between retinas or within the same retina. Stereological methods for cell



counting cells in the ganglion cell layer of retina are not necessary since neurons can be visualized throughout the entire thickness.

### Statistical analyses and terminology

To compare the relationship between stimulus irradiance and duration in the retina and the SCN, the data were fit with a 4-parameter logistic equation using a modified form of the Naka-Rushton equation (Naka and Rushton, 1966). For this function

$$R = \frac{R_{\min} - R_{\max}}{1 + \left(\frac{I}{\sigma}\right)^p} + R_{\max}$$

Where I is the value of the light stimulus (irradiance, duration, or the total number of photons) and the response, R, is the total optical density of Fos labeling.  $R_{\max}$  is the maximum response to the stimulus parameter, I, and  $R_{\min}$  is the response when  $I = 0$ . The stimulus value required to induce a response of one half the maximum response is  $\sigma$ . p is the slope of the function.

Statistical analyses were performed using a one-way analysis of variance (ANOVA) followed, when significant ( $p < 0.05$ ) by Student's t test for a comparisons of two groups. Results in the graphs (figures 1-3) are shown as standard error of the mean.

Several terms are generally used for the description of response properties. *Sensitivity* usually refers to the reciprocal of the stimulus required to produce a response of a criterion value. In psychophysics, the magnitude of the stimulus required to elicit a *one-half maximum response* is usually used, since the response measured represents a probability of observing a given effect. This definition of sensitivity is independent of the maximum response but is dependent on the range (interval between threshold-saturation) and slope of the response in given stimulus conditions. *Threshold* refers to the stimulus quantity required to induce a response of a criterion value, or of statistical significance compared to control values. *Saturation* refers to the stimulus quantity beyond which response amplitude shows no significant increase.

## Results

### Fos induction in the SCN in response to stimulus irradiance and duration

Previous studies have shown that Fos induction in the SCN is related to the level of irradiance (Kornhauser et al., 1990; Zhang et al., 1996; Lupi et al., 1999). In the SCN, the

HAL author manuscript inserm-00131432, version 1

lowest irradiance stimuli delivered in our study ( $0.95 \times 10^8$  photons/cm<sup>2</sup>/s, corresponding to  $3.8 \times 10^{-5}$  μwatts/cm<sup>2</sup>) induces significant Fos expression ( $p < 0.05$ ) at CT 16 compared to dark control animals (figures 1A, 4A). Fos expression remains at reduced but constant levels from  $0.95 \times 10^8$  to  $0.95 \times 10^{10}$  photons/cm<sup>2</sup>/s ( $3.8 \times 10^{-5}$  to  $3.8 \times 10^{-3}$  μwatts/cm<sup>2</sup>). Subsequently, the density of Fos induction in the SCN increases proportionately with increasing irradiance levels from  $0.95 \times 10^{10}$  to  $0.95 \times 10^{14}$  photons/cm<sup>2</sup>/s ( $3.8 \times 10^{-3}$  to  $3.8 \times 10^1$  μwatts/cm<sup>2</sup>, figures 1A, 4). At this level of irradiance ( $0.95 \times 10^{14}$  photons/cm<sup>2</sup>/s) the response reaches saturation levels, with no further increase observed at the highest irradiance employed ( $0.95 \times 10^{15}$  photons/cm<sup>2</sup>/s,  $3.8 \times 10^2$  μwatts/cm<sup>2</sup>, figures 1A, 4G). The irradiance threshold for induction of Fos in the SCN in the hamster was originally described to be in the range of  $10^{11}$  photons/cm<sup>2</sup>/s (Kornhauser et al., 1990). A subsequent study from the same group (Zhang et al., 1996) observed a lower threshold of  $7.5 \times 10^9$  photons/cm<sup>2</sup>/s ( $2.9 \times 10^{-3}$  μwatts/cm<sup>2</sup>) similar to that required for a behavioral phase shift (Nelson and Takahashi, 1991a; Zhang et al., 1996). In our study, we observe a significant induction of Fos at an irradiance level almost 2 log units less. This value is nevertheless several log units above scotopic responses in rodents or humans (Dodt and Echte, 1961; Le Grand, 1968; Emerson, 1980). The differences in the absolute values of the thresholds may simply be related to the fact that few studies have examined the effects of very low irradiance levels. Indeed, there is some suggestion that at very low light levels ( $10^{-4}$  μwatts/cm<sup>2</sup>), a behavioral effect is not totally absent (see Foster et al., 1991, figure 3; Nelson and Takahashi, 1991a, figure 3B). The irradiance required for saturation differs, since Fos expression saturates above  $10^{14}$  photons/cm<sup>2</sup>/s whereas the phase shift response saturates at approximately  $10^{13}$  photons/cm<sup>2</sup>/s.

When the density of light-induced Fos expression is plotted as a function of log<sub>10</sub>-stimulus irradiance, the data can be fitted by a four parameter curve (Naka and Rushton, 1966). The slope of the function was 0.42 and the irradiance necessary to induce a half maximum response was  $3.74 \times 10^{12}$  photons/cm<sup>2</sup>/s ( $1.49$  μwatts/cm<sup>2</sup>).

To determine the photic response to different stimulus durations, the degree of Fos induction was measured following 3, 9, 15, 28.5, 90, 285, 900 and 2850 seconds of light stimulation at a constant irradiance level ( $0.95 \times 10^{12}$  photons/cm<sup>2</sup>/s,  $3.8 \times 10^{-1}$  μwatts/cm<sup>2</sup>), which is essentially equal to the half saturation value determined above. We demonstrate for the first time that Fos levels in the SCN increase proportionately with an increase in the duration of the light stimulus. In the gerbil, a 3 second-light duration is sufficient to induce significant levels of Fos ( $p < 0.05$ ) in the SCN. Fos levels then increase proportionately with increasing stimulus duration (figure 1B) up to 47.5 minutes (2850 seconds). The magnitude of

the response of light-induced Fos expression was fit to log stimulus duration by a four parameter curve. At the longest stimulus duration in our study (47.5 minutes) the Fos response does not appear to saturate (see discussion below), suggesting that the duration used in this study is not limiting. The slope of the function is 0.37, which is similar to that of the irradiance response curve. The duration necessary to induce a half maximum response was 504 sec (approximately 10 minutes).

### **Fos induction in the retina in response to stimulus irradiance and duration**

The responses of Fos induction to variations in irradiance and duration of the light stimulus have never been studied in the retina although several investigations have reported Fos protein and *c-fos* mRNA induction by light in retinal neurons (Sagar and Sharp, 1990; Earnest et al., 1990; Chambille et al., 1993; Yoshida et al., 1993; Nir and Agarwal, 1993). In the retina, Fos induction in relation to light stimulation shows a distinctly different pattern from that in the SCN, in terms of threshold, slope and saturation levels. A significantly higher level of irradiance ( $0.95 \times 10^{12}$  photons/cm<sup>2</sup>/s,  $3.8 \times 10^{-1}$  μwatts/cm<sup>2</sup>) is required to induce any observable Fos expression in the ganglion cell layer (figures 2A, 4F-H). At this irradiance approximately 380 cells/mm<sup>2</sup> are present. These Fos-immunoreactive profiles were presumed to correspond to displaced amacrine and ganglion cells. Below this level, and in the dark control animals, less than 12 cells/mm<sup>2</sup> are seen in the ganglion cell layer (figures 4B, D). In contrast to the SCN, Fos induction saturates rapidly at  $0.95 \times 10^{13}$  photons/cm<sup>2</sup>/s ( $3.8 \times 10^0$  μwatts/cm<sup>2</sup>, figures 2A). By fitting the data for the response for Fos-positive ganglion cells to irradiance with a four parameter curve, we find that the slope of the curve is relatively steep (1.41) and the irradiance necessary to induce a half maximum response was  $3.0 \times 10^{11}$  photons/cm<sup>2</sup>/s (0.12 μwatts/cm<sup>2</sup>).

The threshold for Fos induction in the retina to photic stimuli of different durations also requires higher levels of irradiance compared to the SCN. A significant level of Fos induction is only observed after 900 sec (15 min) and 2850 sec (47.5 min) of continuous light stimulation (figure 2B). The slope of the curve was 0.9, resulting in a narrow stimulus-response range (SCN=5 log units, retina=2 log units). In our experimental conditions saturation is not observed.

Thus, the hypothesis that ganglion cells, which express Fos in the retina, are afferent to the SCN and linked to the induction of Fos in the SCN seems inappropriate (Servièrè and Laviàlle, 1996). These results agrees with a recent study in a rodless transgenic mouse (Lupi

et al., 1999) in which constitutive expression of Fos in the retina remains constant, whereas in the SCN Fos levels vary according to irradiance.

### **Photic response to total photons in the SCN and the retina**

Figure 3 shows the responses plotted in the SCN as a function of total number of photons in the stimulus. In the SCN, the Naka-Rushton curve fit shows a proportional increase in the response of light-induced Fos expression to irradiance levels, from approximately  $10^{12}$  to  $10^{17}$  photons/cm<sup>2</sup>. From  $10^{10}$  to  $10^{12}$  photons/cm<sup>2</sup>, Fos expression is significantly higher than in dark controls, although no increase with increased irradiance is observed over at least 2 log units. The response saturates above  $10^{17}$  photons/cm<sup>2</sup>. The photon values obtained from the duration series fall in the range of  $10^{12}$  to  $10^{15}$  photons/cm<sup>2</sup>, below that required for saturation, which explains why in figure 1B the response shows no saturation in our conditions.

The response curve for Fos induction as a function of photon number suggests a reciprocal relationship over 5 log units between the irradiance and duration of the light stimulation from  $10^{12}$  to  $10^{17}$  photons/cm<sup>2</sup> in the SCN. The slope of the function was 0.44 (similar to the slopes for irradiance and duration above) and the total number of photons necessary to induce a half saturation was  $1 \times 10^{15}$  photons/cm<sup>2</sup>.

The response was completely different in the retina (curve not shown). A significant Fos induction in the ganglion cell layer was only observed starting at  $3.8 \times 10^{14}$  photons/cm<sup>2</sup> and the response saturates rapidly (1 log unit higher). The slope was 1.0 and the half saturation value  $9.9 \times 10^{14}$  photons/cm<sup>2</sup>. The two curves differ in term of threshold, slope and saturation value. Compared to the SCN, the response for the retina has a steeper slope, a higher threshold (several log units), but a lower half saturation value.

## **DISCUSSION**

### **Irradiance response for Fos induction in the SCN**

The amplitude of Fos induction and of a behavioral phase shift both increase with increased irradiance, although the responses differ in threshold, saturation and range. These differences may be related to a number of factors, including prior exposure to constant darkness (Shimomura et al., 1998) or other feedback mechanisms. For example, in the *tau* mutant hamster, the amplitude of a phase shift increases significantly after a long period (49

HAL author manuscript inserm-00131432, version 1

days) in constant darkness compared to a short period (2 days), whereas the amplitude of the Fos response remains similar regardless of the time spent in the dark (Shimomura et al., 1998). This argues that the magnitude of Fos response to light is more tightly linked to the direct photic input to the circadian clock, whereas the output locomotor response, depends on feedback or neural integration at subsequent stages of the clock mechanism. This is consistent with the observation that while the amplitude of a phase shift to different irradiances differs between wildtype and rodless transgenic mice, the amplitude of Fos expression in both strains remains proportional to photon number (Lupi et al., 1999). Finally there are a number of studies which show that, for an equivalent level of irradiance, certain anesthetics or pharmacological agents can diminish the amplitude of the phase shift without affecting the amplitude of Fos induction (Colwell et al., 1993a, b).

As a consequence, the kinetics of the response characteristics of different outputs of the clock differ in terms of threshold, range, and saturation (figure 5). In addition to reflecting distinctions in the inherent mechanisms of each response, these differences may be related to the resolution of the technique employed. For example, the 5-10 minute sampling intervals used for behavioral phase shifts offer low resolution, whereas quantitative measures of Fos distinguish fine relative levels of expression in individual cells. Furthermore, since Fos reflects cellular activity at the input stage of the clock, it is not unexpected that the range is greater than other outputs at subsequent stages of neural integration.

Figure 6 further illustrates the difference in the significance of response sensitivity and threshold sensitivity. The former term expresses the probability of response to changes in irradiance and has usually been employed to express the relative degree of sensitivity for responses of the circadian system. Applied in this sense, the response for melatonin suppression is more sensitive than a phase shift, whereas induction of Fos is the least sensitive. In terms of threshold, on the contrary, Fos induction is observed at 1-2 log units lower than melatonin suppression or a behavioral phase shift. This distinction is particularly well illustrated by comparison of Fos induction in the SCN and in the retina: in terms of response sensitivity the retina is more sensitive, but this definition of sensitivity appears paradoxical since at irradiance levels when no response is observed in the retina, the SCN shows robust Fos induction.

### **Temporal response for Fos induction in the SCN**

The minimal duration required for obtaining a response in the circadian system has not been well studied, and the response differs depending on whether one considers a phase shift

HAL author manuscript inserm-00131432, version 1

or entrainment. Entrainment of locomotor activity has been observed to brief stimuli (0.5-1000 ms) in both nocturnal squirrels and bats (DeCoursey, 1972; Joshi and Chandrashekar, 1984). In contrast, Nelson and Takahashi (1991a) originally reported that a behavioral phase shift could not be induced using very short duration (3 ms) light flashes. The authors suggested that this lack of responsiveness reflects the inability of the circadian system or some component of the transduction pathway, to detect or integrate very short duration pulses of light. Van del Pol et al. (1998) and Arvanitogiannis and Amir (1999) subsequently demonstrated that although a single short (10  $\mu$ sec - 2 ms) bright flash fails to induce a phase shift, trains of pulses produce a phase shift similar to a continuous light stimulus if the total energy falls into the appropriate range. In the latter study only the response for Fos remains proportional to total stimulus duration, indicating integration of photons. The lack of response to a single short pulse is also coherent with the fact that some SCN neurons which initially show no electrophysiological response to a single light stimulation can respond to both repeated flashes, and to continuous 1-2 minute light durations (Meijer et al., 1986).

### **Photon integration and reciprocity in the circadian system**

The idea of reciprocity in the circadian system, first suggested by Takahashi et al. (1984), implies that the magnitude of the phase shift depends on the total number of photons received by the retina independent of irradiance or duration. This concept is of fundamental importance since it implies the existence of a cellular mechanism capable of integrating, or counting, photons over long durations without becoming non-linear. For a given stimulus duration the amplitude of a phase shift was proportional to the number of photons in the light stimulus, but for durations shorter than 30 seconds or longer than 300 seconds sensitivity was reduced. Furthermore, at equivalent irradiances the amplitude of the phase shift to 1 hour pulses was usually larger than for 300 second pulses, whereas when considered as a function of equivalent numbers of photons, the amplitudes of the response at 1 hour were less than at 300 seconds. As a result the authors concluded that "the hamster circadian system appears unable to integrate light information in pulses longer than 300 sec". Nelson and Takahashi (1991a) suggest that this reduced sensitivity occurs downstream from the retina and neural pathway to the SCN, since electrophysiological studies (Meijer et al., 1986) show that SCN neurons can maintain response levels over sustained periods of time, with little or no loss of sensitivity. However, a more recent study shows that the circadian system can integrate the number of photons in single or multiple pulses of light within a 1 hour time interval (Nelson and Takahashi, 1999).

We demonstrate that the response of the circadian system for Fos induction presents a reciprocal relationship for the total number of photons within a range of 3 seconds to 47.5 minutes. The amplitude of the response can be predicted from a single linear function, based on photon number. This relation of reciprocity holds for 5 log units of photon number and is reported for the first time at a cellular level. This broad range of temporal integration and reciprocity is a unique feature of the circadian system and is coherent with, and predictable from, the known luminance response properties of SCN neurons (Meijer et al., 1986). Individual neurons show a monotonic increase in discharge rate as a function of irradiance and sustained activation for periods exceeding 1 hour. Many neurons fail to attain saturation even at the highest stimulus values (800 lux, white light). We speculate that the difference between the linear temporal integration of photons for Fos induction, and the duration dependent sensitivity for a phase shift, may be related to feedback mechanisms at subsequent stages of neural treatment.

The site of integration might occur at one or several possible steps in the transduction pathway from the photoreceptors to the clock. The data from the present study support the idea that the site of integration occurs within the SCN rather than in the retina. However, the hypothesis that some photic integration may occur in retina cannot be excluded. The retinal ganglion cells which project to the SCN may express a different early gene or have a different response threshold. For example, the retino-hypothalamic ganglion cells may have a higher threshold (or different time course) for Fos induction than early gene expression in the SCN. In addition, we use monochromatic green light (500 nm) and the response may be different for other wavelengths, in particular if opponent photoreceptor mechanisms are involved upstream. Furthermore, certain aspects of retinal photostasis (rhodopsin levels, rod outer segment length) imply the existence of long-term integrative physiological mechanisms, which may ultimately be linked to circadian photoreception (Schremser and Williams, 1995). Since reciprocity is observed in the expression of an immediate early gene, the proto-oncogene *c-fos* may either reflect some aspect of the cellular mechanism of photic integration or be an essential factor in the mechanism of integration. It is unknown whether certain clock gene homologs for which expression depends on circadian phase and irradiance (similar to Fos), may also play a role in photic integration. For example, mammalian homologs of the *Drosophila* clock gene period (*per*) have recently been characterized in several studies (Albrecht et al., 1997; Shearman et al., 1997; Shigeyoshi et al., 1997; Tei et al., 1997). Moreover, *mPer1* and *mPer2* RNA levels exhibit circadian rhythms in the SCN (Albrecht et al., 1997; Shearman et al., 1997; Tei et al., 1997) and both are induced by light exposure

during subjective night but not during subjective day (Albrecht et al., 1997; Shearman et al., 1997; Shigeyoshi et al., 1997). *mPer3*, a clock-relevant member of the mammalian Per gene family has been cloned and characterized more recently (Zylka et al., 1998), but unlike *mPer1* and *mPer2*, *mPer3* RNA levels are not induced by light pulses during subjective night. Since *mPer1* mRNA increases with increasing irradiance and the degree of induction is correlated with the relative amount of phase shift of locomotor activity (Shigeyoshi et al., 1997) this clock gene could putatively participate in the mechanism of photon integration. In addition, since the kinetics of *c-fos* and *mPer1* appear to be more or less simultaneous, it is possible that light-induced Fos may have synergistic effects in accelerating the transcription of *mPer1*. However, the potential role of Fos in the induction of *mPer* awaits clarification (Best et al., 1999).

The present results also have important implications concerning the nature of the irradiance detection system. The capacity for an extensive range of temporal integration by the circadian system is unusual compared to responses of the visual or other sensory systems (Nelson and Takahashi, 1999). Temporal summation in the visual system is limited to a few hundred milliseconds (Baumgardt, 1972). A 5 log-unit capacity for stimulus integration is unique for biological systems, with the possible exception of the effect of light on plant germination, involving phytochromes (Cone et al., 1985). The capacity for temporal integration must be compatible with the photopigment properties and/or the organisation of the neural input pathway to the SCN. Previous studies have considered that a cone-like photoreceptor could be involved in circadian photoreception, based on the threshold and range of cone sensitivity (Nelson and Takahashi, 1991a), and on the conservation of circadian responses in rodless *rd* (Provencio et al., 1994, 1998) and transgenic (Lupi et al., 1999) mice. In comparison, the threshold for human cones is  $10^9$  photons/cm<sup>2</sup>/s and a steady state of cone saturation occurs between  $10^{13}$ - $10^{15}$  photons/cm<sup>2</sup>/s, values similar to the response range of the circadian system. However, more recent evidence from rodless/coneless transgenic mice suggests that a novel non-rod, non-cone photopigment may be involved in circadian photoreception (Lucas et al., 1999; Freedman et al., 1999). Putative photopigments include homologs of VA opsin (Soni et al., 1998), melanopsin (Provencio et al., 1998), or the cryptochromes (Miyamoto et Sancar, 1998) which may show different phototransduction properties (Soni and Foster, 1997). Definition of the response properties of the photopigment, and of the functional architecture of the neural network involved in irradiance detection are necessary to determine the mechanisms of photon integration.



## References

- Albrecht U, Sun Z, Eichele G, Lee, C (1997) A differential response of two putative mammalian circadian regulators, *mper1* and *mper2*, to light. *Cell* 91:1055-1064.
- Aronin N, Sagar SM, Sharp FR, Schartz WJ (1990) Light regulates expression of a fos-related protein in rat suprachiasmatic nuclei. *Proc Natl Acad Sci USA* 87:5959-5962.
- Arvanitogiannis A, Amir S (1999) Resetting the rat circadian clock by ultra-short light flashes. *Neurosci Lett* 261:159-162.
- Bauer MS (1992) Irradiance responsivity and unequivocal type-1 phase responsivity of rat circadian activity rhythms. *Am J Physiol* 263:R1110-R1114.
- Baumgardt E (1972) Threshold quantal problems. In: *Handbook of Sensory Physiology, Visual Psychophysics* (Jameson D and Hurvich LM, eds.) vol.VII, pp 29-55. Berlin: Springer-Verlag.
- Best JD, Maywood ES, Smith KL, Hastings MH (1999) Rapid resetting of the mammalian circadian clock. *J Neurosci* 19:828-835.
- Boivin D, Duffy J, Kronauer R, Czeisler C (1996) Dose-response relationships for resetting of human circadian clock by light. *Nature* 379:540-542.
- Brainard GC, Lewy AJ, Menaker M, Fredrickson RH, Miller LS, Weleber RG, Cassone V, Hudson D (1988) Dose-response relationship between irradiance and the suppression of plasma melatonin in human volunteers. *Brain Res* 454:212-218.
- Chambille I, Doyle S, Servièrè J (1993) Photic induction and circadian expression of fos-like protein. Immunohistochemical study in the retina and suprachiasmatic nuclei of hamster. *Brain Res* 612:138-150.
- Colwell CS, Foster RG (1992) Photic regulation of fos-like immunoreactivity in the suprachiasmatic nucleus of the mouse. *J Comp Neurol* 324:135-142.
- Colwell CS, Kaufman CM, Menaker M (1993a) Photic induction of Fos in the hamster suprachiasmatic nucleus is inhibited by baclofen but not by diazepam or bicucullin. *Neurosci Letters* 163:177-181.
- Colwell CS, Kaufman CM, Menaker M, Ralph MR (1993b) Light-induced phase shifts and Fos expression in the hamster circadian system: the effects of anesthetics. *J Biol Rhythms* 8:179-188.
- Cone JW, Jaspers P, Kendrick RE (1985) Biphasic fluence-response curves for light-induced germination of *Arabidopsis thaliana* seeds. *Plant Cell Environ* 8:605-612.
- Cooper HM, Dkhissi O, Sicard B, Groscarret H (1998) Light-evoked c-fos expression in the SCN is different under on/off and twilight conditions. In: *Biological clocks: Mechanisms and Applications* (Touitou Y, ed), pp 181-188. Amsterdam: Elsevier Science.

DeCoursey PJ (1972) LD ratios and the entrainment of a circadian activity in a nocturnal and a diurnal rodent. *J Comp Physiol* 78:221-235.

Doty E, Echte K (1961) Dark and light adaptation in pigmented and white rat as measured by electroretinogram threshold. *J Neurophysiol* 24:427-445.

Earnest DJ, Iadarola M, Yeh HH, Olschowka JA (1990) Photic regulation of *c-fos* expression in neural components governing the entrainment of circadian rhythms. *Exp Neurobiol* 109:53-361.

Emerson VF (1980) Grating acuity in the golden hamster: The effects of stimulus orientation and luminance. *Exp Brain Res* 38:43-52.

Foster R, Provencio I, Hudson D, Fiske S, DeGrip W, Menaker M (1991) Circadian photoreception in the retinally degenerate mouse (*rd/rd*). *J Comp Physiol A* 169:39-50.

Freedman MS, Lucas RJ, Soni B, von Schantz M, Munoz M, David-Gray Z, Foster R (1999) Regulation of mammalian circadian behavior by non-rod, non-cone, ocular photoreceptors. *Science* 284:502-504.

Jojich L, Pourcho RG (1996) Glutamate immunoreactivity in the cat retina: a quantitative study. *Vis Neurosci* 13:117-133.

Joshi D, Chandrashekar MK (1984) Bright light flashes of 0.5 milliseconds reset the circadian clock of a microchiropteran bat. *J Comp Exp Zool* 230:325-328.

Kornhauser JM, Nelson DE, Mayo KE, Takahashi JS (1990) Photic and circadian regulation of *c-fos* gene expression in the hamster suprachiasmatic nucleus. *Neuron* 5:127-134.

Kornhauser JM, Nelson DE, Mayo KE, Takahashi JS (1992) Regulation of *jun-B* messenger RNA and AP-1 activity by light and a circadian clock. *Science* 255:1581-1584.

Le Grand Y (1968) *Light, Colour and Vision*. (Hunt RWG, Walsh JWT, Hunt FRW, eds.) London: Chapman and Hall.

Lucas RJ, Freedman MS, Munoz M, Garcia-Fernandez JM, Foster RG (1999) Regulation of the mammalian pineal by non-rod, non-cone, ocular photoreceptors. *Science* 284:505-507.

Lupi D, Cooper H, Froehlich A, Standford L, McCall M, Foster R (1999) Transgenic ablation of rod photoreceptors alters the circadian phenotype of mice. *Neurosci* 89:363-374.

Meijer JH, Groos GA, Rusak B (1986) Luminance coding in a circadian pacemaker: The suprachiasmatic nucleus of the rat and hamster. *Brain Res* 382:109-118.

Miyamoto Y, Sancar A (1998) Vitamin B2-based blue-light photoreceptors in the retinohypothalamic tract as the photoactive pigments for setting the circadian clock in mammals. *Proc Natl Acad Sci USA* 95:6097-6102.

Nabors LB, Songu-Mize E, Mize RR (1988) Quantitative immunohistochemistry using an image analyzer. II. Concentration standards for transmitter immunohistochemistry. *J Neurosci Methods* 26:25-34.

Naka KI, Rushton WAH (1966) S-potentials from luminosity units in the retina of fish (Cyprinidae). *J Physiol* 185:587-599.

Nelson DE, Takahashi JS (1991a) Sensitivity in a visual pathway for circadian entrainment in the hamster (*Mesocricetus auratus*). *J Physiol* 439:115-145.

Nelson DE, Takahashi JS (1991b) Comparison of visual sensitivity for suppression of pineal melatonin and circadian phase-shifting in the golden hamster. *Brain Res* 554:272-277.

Nelson DE, Takahashi JS (1999) Integration and saturation within the circadian photic entrainment pathway of hamsters. *Am J Physiol* 46:R1351-R1361.

Nir I, Agarwal N (1993) Diurnal expression of c-fos in the mouse retina. *Mol Brain Res* 19:47-54.

Pittendrigh CS (1981) Circadian systems: Entrainment. In: *Biological rhythms. Handbook of Behavioral Neurobiology* (Aschoff J, ed.) 4, pp 95-124. New-York: Plenum.

Podolin PL, Rollag MD, Brainard GC (1987) The suppression of nocturnal pineal melatonin in the syrian hamster: Dose-response curves at 500 and 360 nm. *Endocrinol* 121:266-270.

Provencio I, Wong S, Lederman AB, Argamaso SM, Foster RG (1994) Visual and circadian responses to light in aged retinally degenerate mice. *Vision Res* 34:1799-1806.

Provencio I, Jiang G, De Grip WJ, Par Hayes W, Rollag MD (1998) Melanopsin: an opsin in melanophores, brain and eye. *Proc Natl Acad Sci USA* 95:340-345.

Rea MA (1989) Light increases Fos-related protein immunoreactivity in the rat suprachiasmatic nuclei. *Brain Res Bull* 23:577-581.

Rea MA, Buckley B, Lutton LM (1993) Local administration of EAA antagonists blocks light-induced phase shifts and c-fos expression in hamster SCN. *Am J Physiol* 265:R1191-R1198.

Rusak B, Robertson HA, Wisden W, Hunt SP (1990) Light pulses that shift rhythms induce gene expression in the suprachiasmatic nucleus. *Science* 248:1237-1240.

Rusak B, McNaughton L, Robertson HA, Hunt SP (1992) Circadian variation in photic regulation of immediate-early gene mRNAs in rat suprachiasmatic nucleus cells. *Brain Res Mol Brain Res* 14:124-30.

Sagar SM, Sharp FR (1990) Light induces a Fos-like nuclear antigen in retinal neurons. *Brain Res Mol Brain Res* 7:17-21.

Schremser J-L, Williams TP (1995) Rod outer segment (ROS) renewal as a mechanism for adaptation to a new intensity environment. I. Rhodopsin levels and ROS length. *Exp Eye Res* 61:17-24.

Schwartz WJ, Takeuchi J, Shannon W, Davis EM, Aronin N (1994) Temporal regulation of light-induced fos and fos-like protein expression in the ventrolateral subdivision of the rat suprachiasmatic nucleus. *Neuroscience* 58:573-583.

Servière S, Laviaille M (1996) Le noyau suprachiasmatique: Approche cellulaire du fonctionnement de l'horloge. *Pathologie Biologie* 44:497-508.

Shearman LP, Zylka MJ, Weaver DR, Kolakowski LF Jr, Reppert SM (1997). Two period homologs: circadian expression and photic regulation in the suprachiasmatic nuclei. *Neuron* 19:1261-1269.

Shigeyoshi Y, Taguchi K, Yamamoto S, Takekida S, Yan L, Tei H, Moriya T., Shibata S, Loros J, Dunlap J, Okamura H (1997) Light-induced resetting of a mammalian circadian clock is associated with rapid induction of *mPer1* transcript. *Cell* 91:1043-1053.

Shimomura K, Kornhauser JM, Wisor JP, Umezu T, Yamazaki S, Ihara NL, Takahashi, JS, Menaker M (1998) Circadian behavior and plasticity of light-induced *c-fos* expression in SCN of *tau* mutant hamsters. *J Biol Rhythms* 13:305-314.

Sicard B, Diarra W, Cooper HM (1999) Ecophysiology and chronobiology applied to rodent pest management in semi-arid agriculture areas in sub-saharan west Africa. In: *Ecology Based Management of Rodent Pests* (Singleton GR, Hinds LA, Liers H, Zhang Z, eds.) 59, pp 409-440. Canberra :ACIAR monograph.

Soni BG, Foster RG (1997) A novel and ancient vertebrate opsin. *FEBS Lett* 406:279-283.

Soni B, Philip A, Foster, R (1998) Novel retinal photoreceptors. *Nature* 394:27.

Takahashi JS, DeCoursey PJ, Bauman L, Menaker M (1984) Spectral sensitivity of a novel photoreceptive system mediating entrainment of mammalian circadian rhythms. *Nature* 308:186-188.

Tei H, Okamura H, Shigeyoshi Y, Fukuhara C, Ozawa R, Hirose M, Sakaki Y (1997). Circadian oscillation of a mammalian homologue of the *Drosophila* period gene. *Nature* 389:512-516.

Van del Pol A, Cao V, Heller H (1998) Circadian system of mice integrates brief light stimuli. *Am J Physiol* 44:R654-R657.

Vindlacheruvu RR, Ebling FJP, Maywood ES, Hastings MH (1992) Blockade of glutamatergic neurotransmission in the suprachiasmatic nucleus prevents cellular and behavioral responses of the circadian system to light. *Eur J Neurosci* 4:673-679.

Wollnik F, Brysch W, Uhlmann E, Gillardon F, Bravo R, Zimmermann M, Schingensiepen KH, Herdegen T (1995) Block of *c-fos* and *JunB* expression by antisense oligonucleotides

inhibits light-induced phase shifts of the mammalian circadian clock. *Eur J Neurosci* 7:388-393.

Yoshida K, Kawamura K, Imaki J (1993) Differential expression of c-fos mRNA in rat retinal cell: regulation by light/dark cycle. *Neuron* 10:1049-1054.

Yoshimura T, Ebihara S (1996) Spectral sensitivity of photoreceptors mediating phase-shifts of circadian rhythms in retinally degenerate CBA/J (*rd/rd*) and normal CBA/N (+/+) mice. *J Comp Physiol A* 178:797-802.

Zhang Y, Kornhauser J, Zee P, Mayo K, Takahashi J, Turek F (1996) Effects of aging on light-induced phase-shifting of circadian behavioral rhythms, Fos expression and CREB phosphorylation in the hamster suprachiasmatic nucleus. *Neuroscience* 70:951-961.

Zylka MJ, Shearman LP, Weaver DR, Reppert SM (1998) Three period homologs in mammals: differential light responses in the suprachiasmatic circadian clock and oscillating transcripts outside of brain. *Neuron* 20:1103-1110.

## Figure Legends

*Figure 1.* Fos induction in the SCN in response to stimulus irradiance and duration. Fos induction increases proportionately to both irradiance level and to the duration of exposure. (A) Animals were exposed to a monochromatic pulse of light ( $\lambda=500\text{nm}$ ) of different irradiances but of constant duration (15 min). Irradiance of the light stimulus increased in 1 log unit steps from  $0.95 \times 10^8$  to  $0.95 \times 10^{15}$  photons/cm<sup>2</sup>/s. The continuous line is the modified Naka-Rushton function fitted to the data ( $R_{\min} = 1.68 \times 10^4$ ,  $R_{\max} = 4.84 \times 10^4$ ). The stimulus irradiance required to induce a one-half maximum response ( $\sigma$ ) is  $3.74 \times 10^{12}$  photons/cm<sup>2</sup>/s with a slope of  $p=0.42$ . The response saturates above  $0.95 \times 10^{14}$  photons/cm<sup>2</sup>/s. The amplitude of Fos expression at the lowest irradiance tested ( $0.95 \times 10^8$  photons/cm<sup>2</sup>/s) was significantly higher than in the dark controls.

(B) Animals were exposed to a monochromatic pulse of light at a constant irradiance ( $\lambda=500\text{nm}$ ;  $0.95 \times 10^{12}$  photons/cm<sup>2</sup>/s) but of variable duration in  $\frac{1}{2}$  log unit steps (3, 9, 15, 28, 90, 285, 900, 2850 seconds). Significant levels of Fos are observed for very short duration stimuli (3 sec) and the response does not attain saturation for the irradiance level used in this experiment. The continuous line is the modified Naka-Rushton function fitted to the data ( $R_{\min} = 8.45 \times 10^3$ ,  $R_{\max} = 5.46 \times 10^4$ ). The slope ( $p$ ) of the function is 0.37 and the duration necessary to induce a half maximum response ( $\sigma$ ) is 504 sec (8.4 minutes).

In these 2 series, animals were returned to constant darkness following stimulation and perfused 60 minutes after the beginning of the light pulse. Control animals were handled identically but were not exposed to light. Error bars represent S.E.M. ( $n = 4$  for each point).

*Figure 2.* Fos induction in the ganglion cell layer of the retina in response to stimulus irradiance (A) and duration (B). Experimental conditions and stimulus irradiance and duration were the same as in figure 1. The data points represent retinas from the same individuals used in figure 1. The mean number of Fos-immunopositive nuclei (cells per mm<sup>2</sup>) were counted in the ganglion cell layer over the surface of whole retinal flatmounts. (A) In the retina, the number of Fos immunopositive cells increases sharply at a relatively high level of irradiance ( $0.95 \times 10^{12}$  photons/cm<sup>2</sup>/s). We fitted the density of Fos-positive ganglion cells using a four parameter curve. The continuous line is the modified Naka-Rushton function fitted to the data ( $R_{\min} = 10.10$ ,  $R_{\max} = 543.2$ ). The slope ( $p$ ) of the curve is relatively steep (1.41) and the irradiance necessary to induce a half maximum response is  $3.0 \times 10^{11}$  photons/cm<sup>2</sup>/s. (B) For the response to different stimulus durations, relatively long durations are required to induce Fos. The continuous line is the modified Naka-Rushton function fitted to the data ( $R_{\min} = 16.67$ ,  $R_{\max} = 701.5$ ,  $p = 0.9$  and  $\sigma = 450$  sec).

*Figure 3.* Induction of Fos in the SCN in response to the total number of photons. The data from figure 1 for the SCN were plotted as a function of the total number of photons in the light stimulus. This figure shows that light-evoked Fos expression in the SCN is proportional to the total number of photons in the range of  $10^{12}$  to  $10^{17}$  photons/cm<sup>2</sup>, rather than irradiance or duration alone. (solid squares = data points from irradiance response curve, fig 1A, empty squares = data points from duration response curve, fig 1B). The continuous line is the modified Naka-Rushton function fitted to the data ( $R_{\min} = 1.47 \times 10^4$ ,  $R_{\max} = 4.53 \times 10^4$ ). The number of photons required to induce a one-half maximum response ( $\sigma$ ) is  $1.088 \times 10^{15}$  photons/cm<sup>2</sup> and the slope ( $p$ ) is =0.44.

*Figure 4.* Photomicrographs showing the distribution of Fos-immunoreactive nuclei in the SCN (A, C, E, G) and in flat-mounted retina from the same animals (B, D, F, H)

Animals were placed in the light apparatus at CT16 and either exposed to no light (dark controls, A and B) or given monochromatic light pulses (15 min,  $\lambda = 500$  nm,) of increasing irradiance:  $0.95 \times 10^9$  (C, D) or  $0.95 \times 10^{13}$  (E, F) or  $0.95 \times 10^{15}$  photons/cm<sup>2</sup>/s (G, H). Scale bar = 200  $\mu$ m (SCN) and 40  $\mu$ m (retina). At saturation levels the entire SCN is filled with densely stained neurons primarily located in the ventral region of the SCN (G). In animals having received lower levels of irradiance, the number of Fos positive cells is diminished and more restricted in distribution (C, E). In control animals, none or only a few lightly stained neurons are seen in the nucleus (A), and the total optical density of the entire nucleus is low. In all cases, Fos positive cells are also observed in the lateral hypothalamic region, and in the periventricular region immediately dorsal to the SCN, extending toward the periventricular nuclei.

*Figure 5.* Comparison of different measures of circadian responses (melatonin suppression, phase shift of locomotor activity, and Fos expression) in relation to irradiance. This figure summarizes results of the present and previous studies of responses of the circadian system. Only those studies using monochromatic light (500-515 nm) are used in order to provide valid comparisons in terms of irradiance (photon flux). The range (solid line) and irradiance levels required for both threshold (black triangle) and for saturation (black diamond) for the different responses are indicated. In general, threshold levels are lower and the range of the response greater in more recent studies than those obtained in earlier investigations, possibly due to differences in methodological or conceptual approaches. In terms of threshold irradiance required to induce a response, melatonin suppression, a behavioral phase shift and Fos induction show roughly similar threshold values, between  $10^9$  and  $10^{10}$  photons/cm<sup>2</sup>/s. The threshold in our study is slightly lower ( $10^8$  photons/cm<sup>2</sup>/s), possibly because similar low levels of irradiance have not previously been examined. Fos induction shows the widest response range and highest saturation value. In contrast, melatonin suppression has a very narrow range compared to a behavioral shift and Fos induction, and rapidly reaches saturation levels at  $10^{11}$  photons/cm<sup>2</sup>/s.

(1. Brainard *et al.*, 1988; 2. Podolin *et al.*, 1987; 3. Nelson and Takahashi, 1991b; 4. Lucas *et al.*, 1999; 5. Foster *et al.*, 1991; 6. Yoshimura and Ebihara, 1996; 7. Nelson and Takahashi, 1991a; 8. Kornhauser *et al.*, 1990; 9. Zhang *et al.*, 1996; 10. present study)

*Figure 6.* Schematic representation of differences in sensitivity and threshold for melatonin suppression, phase shift of locomotor activity, and Fos expression in relation to irradiance (from figure 5). The term sensitivity is an aspect of response probability, and refers to the reciprocal of the irradiance value required to induce a one-half maximum response (see vertical lines which intersect the half saturation line). The sensitivity value depends on the range (threshold-saturation) and slope of the response. Using this definition, melatonin suppression is the most sensitive response. Threshold refers to the irradiance required to induce a response statistically different from a control value. In terms of threshold (shown as open arrows), Fos induction requires the lowest irradiance. The range of response for Fos induction is greatest since the threshold is low and saturation is high (shown as closed arrows).

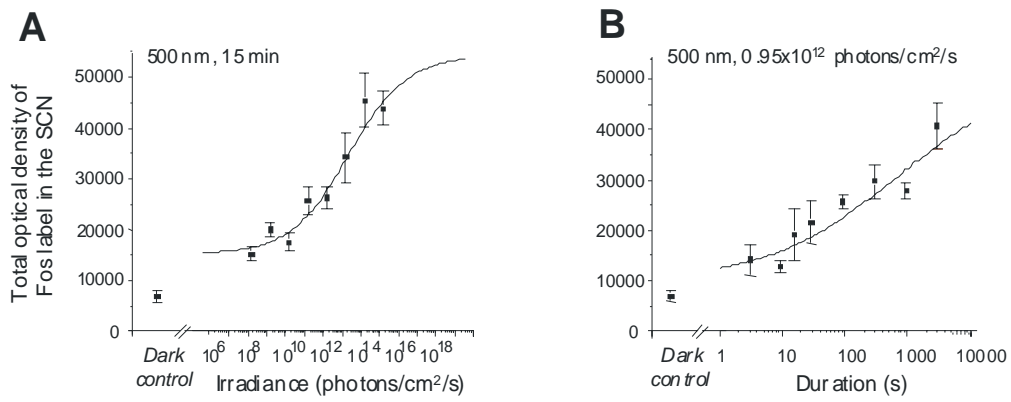




Figure 2, top

Dkhissi-Benyahya et al.

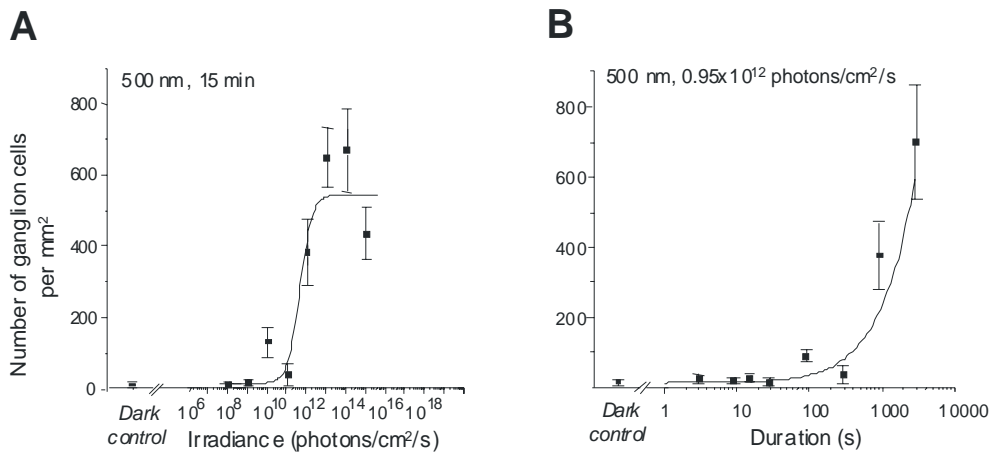


Figure 3, top

Dkhissi-Benyahya et al.

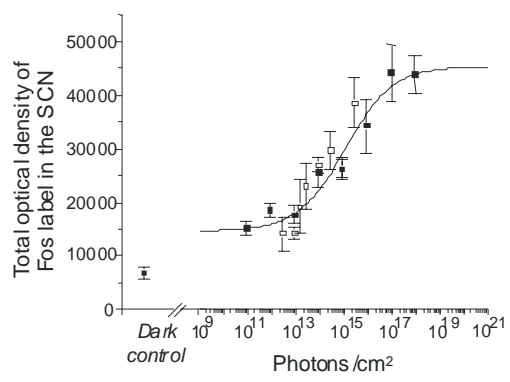


Figure 4

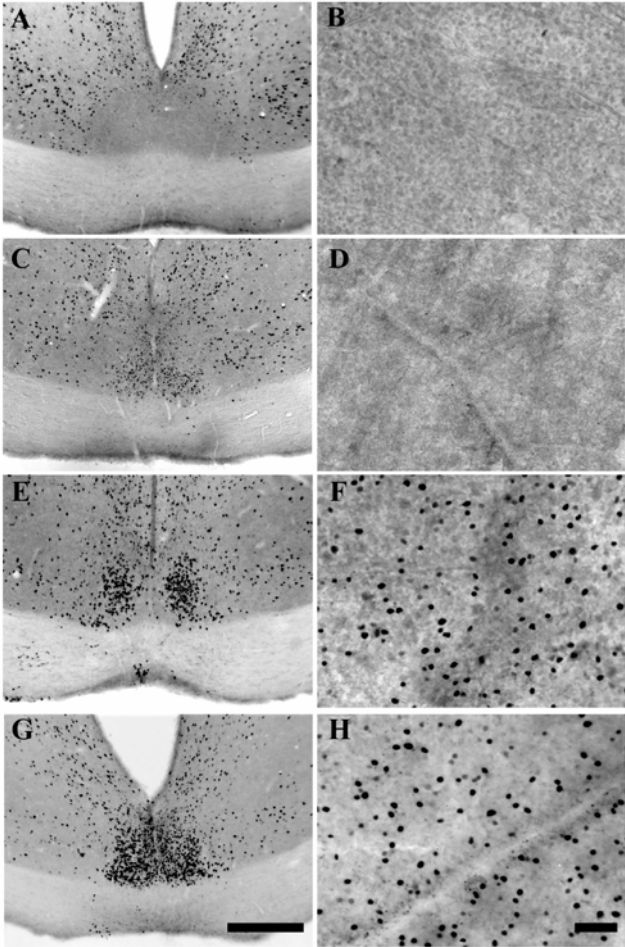


Figure 5, top

Dkhissi-Benyahya et al.

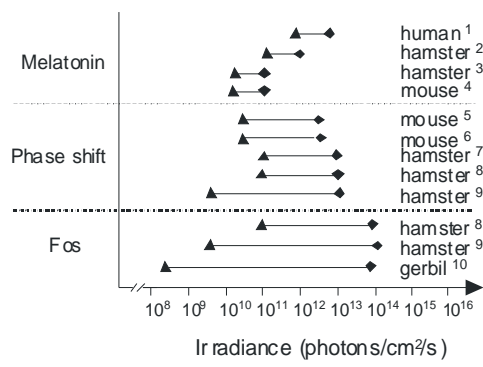


Figure 6, top

Dkhissi-Benyahya et al.

