



HAL
open science

Frequency, prognostic impact, and subtype association of 8p12, 8q24, 11q13, 12p13, 17q12, and 20q13 amplifications in breast cancers.

Anne Letessier, Fabrice Sircoulomb, Christophe Ginestier, Nathalie Cervera, Florence Monville, Véronique Gelsi-Boyer, Benjamin Esterni, Jeannine Geneix, Pascal Finetti, Christophe Zemmour, et al.

► To cite this version:

Anne Letessier, Fabrice Sircoulomb, Christophe Ginestier, Nathalie Cervera, Florence Monville, et al.. Frequency, prognostic impact, and subtype association of 8p12, 8q24, 11q13, 12p13, 17q12, and 20q13 amplifications in breast cancers.. *BMC Cancer*, 2006, 6, pp.245. 10.1186/1471-2407-6-245 . inserm-00122145

HAL Id: inserm-00122145

<https://inserm.hal.science/inserm-00122145v1>

Submitted on 27 Dec 2006

HAL is a multi-disciplinary open access archive for the deposit and dissemination of scientific research documents, whether they are published or not. The documents may come from teaching and research institutions in France or abroad, or from public or private research centers.

L'archive ouverte pluridisciplinaire **HAL**, est destinée au dépôt et à la diffusion de documents scientifiques de niveau recherche, publiés ou non, émanant des établissements d'enseignement et de recherche français ou étrangers, des laboratoires publics ou privés.

Research article

Open Access

Frequency, prognostic impact, and subtype association of 8p12, 8q24, 11q13, 12p13, 17q12, and 20q13 amplifications in breast cancers

Anne Letessier¹, Fabrice Sircoulomb¹, Christophe Ginestier¹, Nathalie Cervera¹, Florence Monville¹, Véronique Gelsi-Boyer^{1,2,3}, Benjamin Esterni⁴, Jeannine Geneix¹, Pascal Finetti¹, Christophe Zemmour¹, Patrice Viens^{3,4}, Emmanuelle Charafe-Jauffret^{1,2,3}, Jocelyne Jacquemier^{1,2}, Daniel Birnbaum¹ and Max Chaffanet*¹

Address: ¹Centre de Recherche en Cancérologie de Marseille, Département d'Oncologie Moléculaire, UMR599 Inserm/Institut Paoli-Calmettes, Marseille, France, ²Centre de Recherche en Cancérologie de Marseille, Département de BioPathologie, UMR599 Inserm/Institut Paoli-Calmettes, Marseille, France, ³Faculté de Médecine, Université de la Méditerranée, Marseille, France and ⁴Centre de Recherche en Cancérologie de Marseille, Département d'Oncologie Médicale, UMR599 Inserm/Institut Paoli-Calmettes, Marseille, France

Email: Anne Letessier - letessiera@marseille.fnclcc.fr; Fabrice Sircoulomb - sircoulombf@marseille.fnclcc.fr; Christophe Ginestier - cginesti@med.umich.edu; Nathalie Cervera - cerveran@marseille.fnclcc.fr; Florence Monville - monvillef@marseille.fnclcc.fr; Véronique Gelsi-Boyer - gelsiv@marseille.fnclcc.fr; Benjamin Esterni - esternib@marseille.fnclcc.fr; Jeannine Geneix - geneixj@marseille.fnclcc.fr; Pascal Finetti - finettip@marseille.fnclcc.fr; Christophe Zemmour - chaffanetm@marseille.fnclcc.fr; Patrice Viens - viensp@marseille.fnclcc.fr; Emmanuelle Charafe-Jauffret - jauffrete@marseille.fnclcc.fr; Jocelyne Jacquemier - jacquemierj@marseille.fnclcc.fr; Daniel Birnbaum - birnbaum@marseille.inserm.fr; Max Chaffanet* - chaffanetm@marseille.fnclcc.fr

* Corresponding author

Published: 13 October 2006

Received: 18 August 2006

BMC Cancer 2006, 6:245 doi:10.1186/1471-2407-6-245

Accepted: 13 October 2006

This article is available from: <http://www.biomedcentral.com/1471-2407/6/245>

© 2006 Letessier et al; licensee BioMed Central Ltd.

This is an Open Access article distributed under the terms of the Creative Commons Attribution License (<http://creativecommons.org/licenses/by/2.0>), which permits unrestricted use, distribution, and reproduction in any medium, provided the original work is properly cited.

Abstract

Background: Oncogene amplification and overexpression occur in tumor cells. Amplification status may provide diagnostic and prognostic information and may lead to new treatment strategies. Chromosomal regions 8p12, 8q24, 11q13, 17q12 and 20q13 are recurrently amplified in breast cancers.

Methods: To assess the frequencies and clinical impact of amplifications, we analyzed 547 invasive breast tumors organized in a tissue microarray (TMA) by fluorescence in situ hybridization (FISH) and calculated correlations with histoclinical features and prognosis. BAC probes were designed for: (i) two 8p12 subregions centered on *RAB1*/*IFIPI* and *FGFR1* loci, respectively; (ii) 11q13 region centered on *CCND1*; (iii) 12p13 region spanning *NOL1*; and (iv) three 20q13 subregions centered on *MYBL2*, *ZNF217* and *AURKA*, respectively. Regions 8q24 and 17q12 were analyzed with *MYC* and *ERBB2* commercial probes, respectively.

Results: We observed amplification of 8p12 (amplified at *RAB1*/*IFIPI* and/or *FGFR1*) in 22.8%, 8q24 in 6.1%, 11q13 in 19.6%, 12p13 in 4.1%, 17q12 in 9.9%, 20q13^Z (amplified at *ZNF217* only) in 9.9%, and 20q13^{Co} (co-amplification of two or three 20q13 loci) in 8.5% of cases. The 8q24, 12p13, and 17q12 amplifications were correlated with high grade. The most frequent single amplifications were 8p12 (9.8%), 8q24 (3.3%) and 12p13 (3.3%), 20q13^Z and 20q13^{Co} (1.6%) regions. The 17q12 and 11q13 regions were never found amplified alone. The most frequent co-amplification was 8p12/11q13. Amplifications of 8p12 and 17q12 were associated with poor outcome. Amplification of 12p13 was associated with basal molecular subtype.

Conclusion: Our results establish the frequencies, prognostic impacts and subtype associations of various amplifications and co-amplifications in breast cancers.

Background

Amplification is a frequent and important mechanism for oncogene overexpression in breast tumor cells. Several amplified regions may participate to breast tumor initiation and/or progression [1]. Chromosomal regions 8p12, 8q24, 11q13, 17q12 and 20q13 are amplified in a consistent proportion of breast tumors [2-5]. The 12p13 region was also found amplified in some breast tumors [6,7].

Amplification status may be determined in clinics as an indicator of prognosis or before applying a specific treatment: *ERBB2* amplification, found in 15 to 25% of breast cancers, is a marker of adverse prognosis and encodes a tyrosine kinase receptor that is the target of trastuzumab (Herceptin) [8-10]. Amplifications at 8p12, 8q24, 11q13, 12p13, and 20q13 have also potential clinical interest as prognosis markers and/or therapeutic targets. Amplification of the 8p12 region is found in around 15% of breast cancers [11-13]. Although the identity of the driver genes has not been definitely established, the importance of the *FGFR1* tyrosine kinase receptor gene has been suggested [5,14]. Amplification of this region has an adverse impact on prognosis in breast cancer [5]. *MYC* is localized in 8q24 and encodes a nuclear protein that plays a role in cell cycle progression. Amplification of 8q24 occurs in up to 20% of breast cancers and is associated with a poor clinical outcome [15-21]. *CCND1* localized in 11q13 encodes cyclin D1, which is active during the G1 phase of the cell cycle. Amplification of *CCND1* occurs in 10 to 30% of breast cancers [3,22-24]. Amplification of 12p13 is not a frequent event in breast cancers but genomic studies indicate its potential importance in basal breast cancers [7,25]. The 20q13 chromosomal region is amplified in 5% to 20% in breast tumors and its prognosis impact is unclear [26-29]. Several potential oncogenes have been suggested, including *MYBL2* [23,30], *AURKA* [31], and *ZNF217* [32-34].

To assess the frequencies and to evaluate the impact on prognosis of amplifications and co-amplifications, we analyzed 547 breast tumors organized in a tissue microarray (TMA) by fluorescence in situ hybridization (FISH) with probes covering amplified regions. BAC probes were designed for: (i) two 8p12 subregions [5] centered on *RAB11FIP1* and *FGFR1* loci, respectively; (ii) 11q13 region centered on *CCND1*; (iii) 12p13 region spanning *NOL1*; and (iv) three 20q13 subregions [29] centered on *MYBL2*, *ZNF217* and *AURKA*, respectively. Regions 8q24 and 17q12 were analyzed with *MYC* and *ERBB2* commercial probes, respectively.

Methods

Patients and histological samples

We studied a consecutive series of 547 unilateral localized invasive breast carcinomas from women treated at the Institut Paoli-Calmettes between October 1987 and December 1999. According to the WHO classification, this series comprised 386 ductal, 72 lobular, 37 tubular, 8 medullary carcinomas and 44 other histological types. They were obtained after informed consent and stored in an anonymous fashion according to an approval of the local Ethics Committee. The Ethics Committee of the Institut Paoli-Calmettes (Marseille's Cancer Institute) approved the use of these specimens and the data in research. The average age at diagnosis was 59 years (range 25-94). Raw survival data were either obtained from the cancer registry of the Institut Paoli-Calmettes or collected from the patients attending physicians. The pathologic stage, tumor diameter, and nodal status were obtained from the primary pathology reports. A total of 254 tumors were associated with lymph node invasion and 403 were positive for estrogen receptor. All slides from all tumors were reviewed by one of two pathologists (J. J. and E.C.J.) to define the various histoclinical factors collected for this series. They included patient age, invasive histological type, pathological tumor size, Scarff-Bloom-Richardson (SBR) grade (I to III), peritumoral vascular invasion, axillary lymph node status, estrogen receptor expression (ER), progesterone receptor expression (PR), P53 status, as evaluated by immunohistochemistry (IHC) with a positivity cut-off value of 1%, *ERBB2* status, evaluated by IHC with the 0-3+ score as illustrated by the HercepTest kit scoring guidelines (DakoCytomation, Copenhagen, Denmark), and Ki67 status as evaluated by IHC with a positive cut-off value at 20%. This study was approved and executed in compliance with our institutional review board.

Tissue microarray construction

Tissue microarray (TMA) was prepared as described previously [35]. Five- μ m sections of the resulting TMA block were made and used for fluorescence in situ hybridization (FISH) and IHC analysis after transfer onto glass slides.

Fluorescence In Situ Hybridization on TMA analysis

To characterize the 8q24 and 17q12 amplified regions, FISH on TMA was done according to the histology FISH instructions of DakoCytomation with the *MYC* probe and *HER2* FISH pharmDx™ kit (DakoCytomation, Copenhagen, Denmark). To characterize the 8p12, 11q13, 12p13, and 20q13 amplified regions, FISH on TMA was done according to published protocols [36,37]. Two 8p12 sub-

regions centered on *RAB11FIP1* and *FGFR1* loci, respectively, were analyzed. From telomere to centromere, the different BAC pools were constituted as follows: BAC pool 1 (*RAB11FIP1* region): RP11-863K10 (AC138356; chr8:37,630,477-37,820,753), RP11-113G10 (chr8:37,715,876-37,881,776), RP11-457O21 (chr8:37,881,796-38,044,340); BAC pool 2 (*FGFR1* region): RP11-90P5 (AC084024.17; chr8:38,091,019-38,226,422), RP11-513D5 (AC087362.13; chr8:38,216,677-38,358,846), RP11-100B16 (chr8:38,358,839-38,522,417), RP11-675F6 (AC069120.9; chr8:38,485,749-38,646,922). The 11q13 region centred on *CCND1* was analyzed with the following combination of BAC pools, from centromere to telomere: RP11-300I6 (AP001888; chr11:69,162,462-69,323,966), RP11-643C9 (chr11:69,297,662-69,494,887), RP11-626H12 (AP003555; chr11:69,478,620-69,600,219). The 12p13 region spanning *NOL1* region was analyzed with, from telomere to centromere, RP5-940J5 (AC006064; chr12:6,422,311-6,594,917), RP11-433J6 (AC135892; chr12:6,579,330-6,755,900), RP11-578M14 (chr12:6,699,832-6,884,088) BAC pool. Three 20q13 subregions of amplification corresponding to *MYBL2*, *ZNF217* and *AURKA* loci were analyzed with locus-specific BAC pools, from centromere to telomere : *MYBL2* locus BAC pool : RP11-69I10 (chr20:41,467,083-41,631,733), RP11-153L9 (chr20:41,659,456-41,808,516), RP5-1030M6 (AL035089; chr20:41,816,168-41,989,971); *ZNF217* locus BAC pool : RP11-91L1 (chr20:51,421,217-51,572,829), RP4-724E16 (AL157838; chr20:51,561,511-51,690,363), RP11-299C12 (chr20:51,647,272-51,837,964); and *AURKA* locus BAC pool : RP11-380D15 (AL139824; chr20:54,122,911-54,316,054), RP5-1167H4 (AL121914; chr20:54,336,458-54,472,150), RP5-1153D9 (AL109806; chr20:54,472,051-54,566,171). Genomic information was taken from the UCSC Genome Browser on Human (March 2006 Assembly), which is based on NCBI Build 35 (National Center for Biotechnology Information, U.S. National Library of Medicine 8600 Rockville Pike, Bethesda, MD, USA).

DNA from BAC clones were purified, labeled and individually verified for their specificity of their addressed

regions. All BAC clones were obtained from the BACPAC resource (Children's Hospital Oakland – BACPAC Resources, Oakland, CA, USA). After counterstaining with Vectashield containing 4,6-diamidino-2-phenylindole (DAPI) (Vector, Burlingame, CA, USA), images were analyzed with a microscope (DMRXA, Leica Microsystemes, Marseille, France), captured with a CCD camera, filtered and processed with ISIS software (In Situ Imaging Systems, Metasystems Hard- und Software GmbH, Alt-lusheim, Germany)[38].

Fluorescence was scored on a minimum of 50 nuclei per tumor. The 50 nuclei of cancer cells were representative of the overall cell heterogeneity of the tumor. For each region analyzed, two observers read the TMA independently. The region analyzed was considered as amplified when the number of BAC pool signal was >5 in the cell. Tumors were defined as amplified when 10% or more of tumor cells showed such amplification.

Immunohistochemistry analysis

The characteristics of the antibodies used are listed in Table 1. IHC was done as previously described [35], using LSAB2 kit in the autostainer (Dako Autostainer, Copenhagen, Denmark). Results were evaluated under a light microscope by two pathologists (EC-J, JJ) and scored by the quick score (QS) as previously done [35], except for ERBB2 status, which was evaluated with the Dako scale (HercepTest kit scoring guidelines). For each tumor, the mean of the score of a minimum of two core biopsies was calculated.

Statistical methods

Amplification data were summarized by frequencies and percentages. Clinical data were dichotomized as follows: Amplicon: amplified vs. non-amplified, grade: I vs. II/III, age: <50 vs. ≥ 50, tumor size: pT1 vs. pT2/pT3, peritumoral vascular invasion: absent vs. present, estrogen receptor and progesterone receptor: negative vs. positive, Ki67: <20 vs. ≥ 20 and axillary lymph node: negative vs. positive.

The association between two categorical variables was examined using Fisher's exact or χ^2 tests. The primary endpoint was the metastasis-free survival (MFS), which was

Table 1: List of proteins tested by immunohistochemistry and characteristics of the corresponding antibodies.

Protein	Antibody	Origin	Clone	Dilution
Estrogen receptor	mmab	Novocastra Laboratories	6F11	1/60
Progesterone receptor	mmab	DakoCytomation	PgR 636	1/80
ERBB2	rpab	DakoCytomation	HercepTest	1/400
P53	mmab	Immunotech	DO-1	1/4
Ki67	mmab	DakoCytomation	MIB-1	1/100

mmab, mouse monoclonal antibody; rpab, rabbit polyclonal antibody

defined by the time interval between the diagnosis of breast cancer and a distant metastasis. Metastasis-free patients were right censored at the date of the last follow-up, death, recurrence of local or regional disease, or development of a second primary cancer. Survival curves were derived from Kaplan-Meier estimates and compared by log-rank test. Significant changes of relative risks of metastasis according to the amplification status were explored using Cox's proportional hazard models in univariate and multivariate analysis. Multivariate models were built using a backward stepwise selection of variables to minimize the Akaike Information Criterion. All results are presented with their 95% confidence intervals. Statistical tests were two-sided at the 5% level of significance. All the statistical analyses were done using R.2.3.0 statistical software [39].

Results

Frequencies of amplifications and co-amplifications

Six regions of amplification were analyzed: 8p12 (amplified at least at one locus: *RAB11FIP1* and/or *FGFR1*), 8q24 (*MYC*), 11q13 (*CCND1*), 12p13 (*NOL1*), 17q12 (*ERBB2*), and 20q13^{Co} (co-amplification of either two of three loci: *MYBL2*, *ZNF217* and *AURKA*, or all three) regions. For the 20q13 region, in regard to the significant impact of *ZNF217* amplification on disease evolution [29], we decided to distinguish the amplified subregion 20q13^Z centered on *ZNF217*. To assess the frequencies of the 8p12, 8q24, 11q13, 12p13, 17q12 and 20q13 amplifications we used FISH on TMA with specific probes. The number of interpretable cases varied between different FISH experiments (Figure 1). All TMA sections were only hybridized once. Reasons for non-informative results were: lack of tissue on the TMA, absence of unequivocal tumor cells, or non-interpretable hybridization data.

Among the informative cases, the frequency of amplification was 22.8% for 8p12, 6.1% for 8q24, 19.6% for 11q13, 4.1% for 12p13, 9.9% for 17q12, 9.9% for 20q13^Z and 8.5% for 20q13^{Co} regions (Figure 1). More in detail, the amplification frequencies of subregions centered on *RAB11FIP1* and *FGFR1* (8p12) as well as on *MYBL2*, *ZNF217* and *AURKA* (20q13) loci are listed in Table 2. The highest amplification frequencies were obtained with *RAB11FIP1* and *ZNF217* subregions for 8p12 and 20q13, respectively.

We then looked at the distribution of the frequency of amplifications and co-amplifications. Overall, only 128 cases were informative for all the regions analyzed. A total of 57.4% of cases showed no amplification. The frequency of single amplifications was 9.8% for 8p12, 3.3% for 8q24 and 12p13, 1.6% for 20q13^{Co} and 20q13^Z. The 11q13 and 17q12 regions were never found amplified alone. The frequency of co-amplifications was 8.2% for 8p12/11q13,

3.3% for 11q13/17q12, 1.6% for 17q12/20q13^{Co}, 11q13/20q13^{Co}, 11q13/20q13^Z/20q13^{Co}, 8q24/11q13/17q12, 8q24/20q13^Z/20q13^{Co}, 8p12/11q13/12p13 and 8p12/11q13/20q13^Z/20q13^{Co} (Figure 2). We also looked for associations between amplified regions. The 11q13/20q13^{Co}, 12p13/20q13^Z and 8p12/11q13 co-amplifications were among the most strongly correlated [see Additional file 1].

Correlation of amplified regions with histoclinical factors

We next examined the relation between amplifications and histoclinical factors [see Additional file 2]. We did not find any association between amplified regions and age, histological type and pathological tumor size. Amplification of 8q24, 12p13, 17q12 and 20q13^{Co} regions were correlated with high grade. Amplification of 8p12, 12p13 and 17q12 were correlated with a high proliferation index. Amplification of 8q24, 12p13, 17q12, and 20q13^Z were associated with ER and/or PR negativity. The 20q13^{Co} amplification was associated with axillary lymph node invasion.

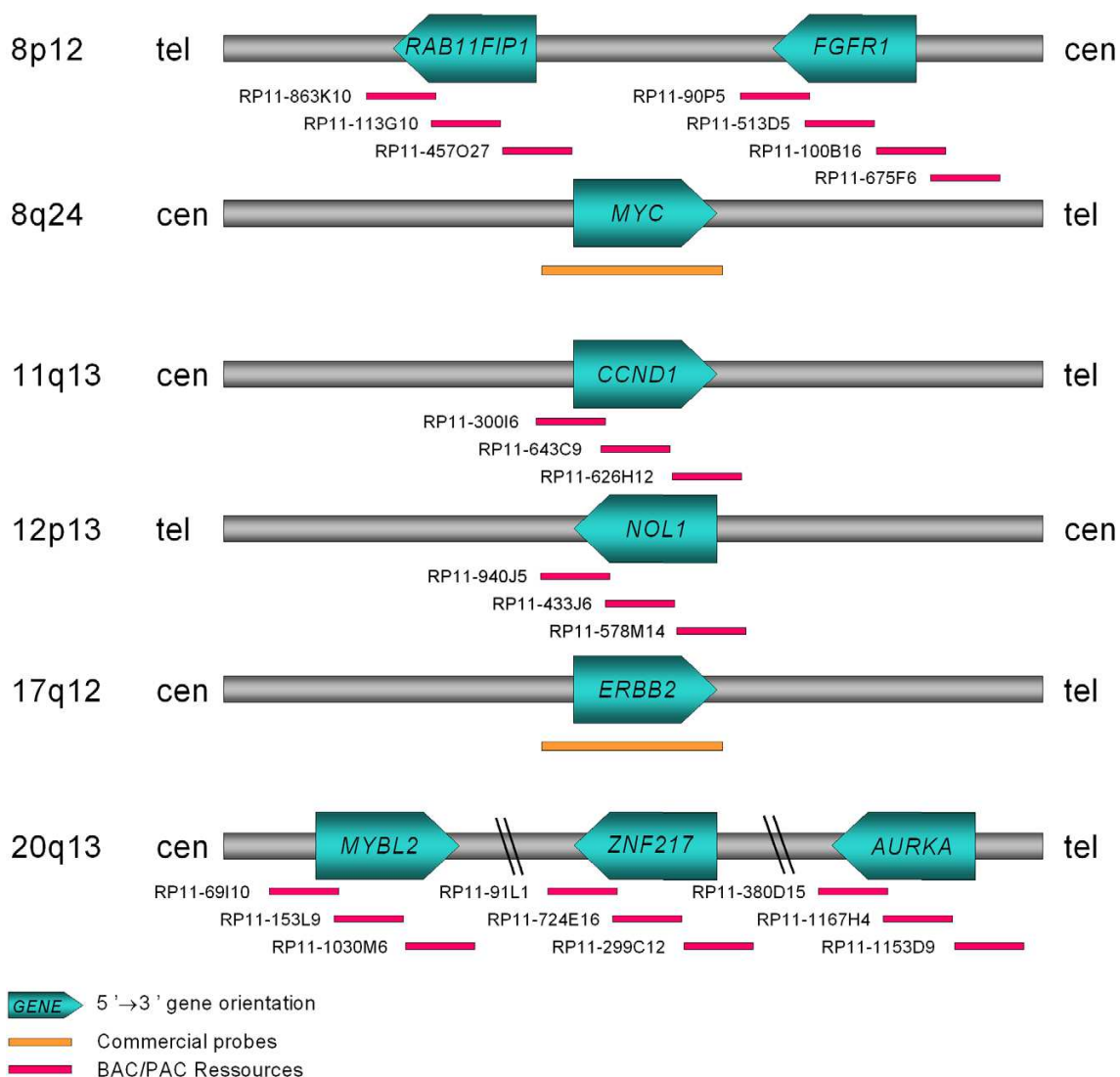
Correlation of amplified regions with clinical outcome

We then examined the impact of amplifications and co-amplifications on clinical outcome. We did univariate analyses to determine the impact of each individual amplified region on the MFS. The 8p12 and 17q12 amplifications but not the others were associated with clinical outcome (Table 3). Both were associated with decreased five-year MFS in the whole population and in N- patients (Figure 3A–D). To estimate the impact of co-amplification on MFS we did a multivariate analysis of significant amplifications in univariate analysis followed by a stepwise selection. We found that co-amplification of 8p12/17q12 was associated with a poor outcome in N- patients (Figure 3E).

We further evaluated the importance of the amplifications as prognosis markers. We did a Cox multivariate analysis of MFS. The values for amplification, grade, age, tumor size, peritumoral vascular invasion, ER, PR, and Ki67 were considered as categorical variables. Amplification status of 8p12 remained significant as well as Ki67 status according to the Akaike Information criterium when dichotomized amplified vs. non-amplified and <20 vs. ≥ 20 in N-patients (Table 4). The relative risk of recurrence was 2.52 for 8p12-amplified disease compared to non-8p12-amplified disease ($p = 0.15$).

Correlation of amplified regions with molecular subtypes

Five main molecular subtypes (luminal A, luminal B, basal, ERBB2-overexpressing, and normal-like) have been identified by gene expression profiling of breast tumor samples using an intrinsic set of ~500 genes [40,41]. We determined the subtype of our samples by both mRNA



Region of amplification	Number of FISH informative cases	% of tumors with amplification
8p12	219	22.8%
8q24	246	6.1%
11q13	296	19.6%
12p13	318	4.1%
17q12	272	9.9%
20q13 ^Z	233	9.9%
20q13 ^{Co}	270	8.5%

Figure 1
Amplification regions and FISH probes. Schematic representation of the six regions analyzed with probes used in FISH experiments and the main corresponding genes. The number of informative cases and the percentage (frequency) of amplifications of each analyzed region is given in the table.

Table 2: 8p12 and 20q13 subregional amplification frequencies

Region of amplification	Gene regions	Number of FISH informative cases	% of tumors with amplification
8p12	<i>RAB11FIP1</i>	279	13.3%
	<i>FGFR1</i>	319	9.4%
20q13	<i>MYBL2</i>	265	5.7%
	<i>ZNF217</i>	233	9.9%
	<i>AURKA</i>	282	3.5%

and protein analyses (not shown). The 11q13 amplification was strongly correlated with the luminal A subtype (p value = 0.00029) and negatively correlated with the basal subtype (p value = 0.005633), whereas the 12p13 amplification was correlated with the basal subtype (p value = 0.020). As expected, the 17q12 amplification was corre-

lated with the ERBB2 subtype (p value = 2.061e-06) (Table 5).

Discussion

Several chromosomal regions are frequent targets for gene amplification in breast cancers. Oncogene activation and genomic instability associated with this process may play

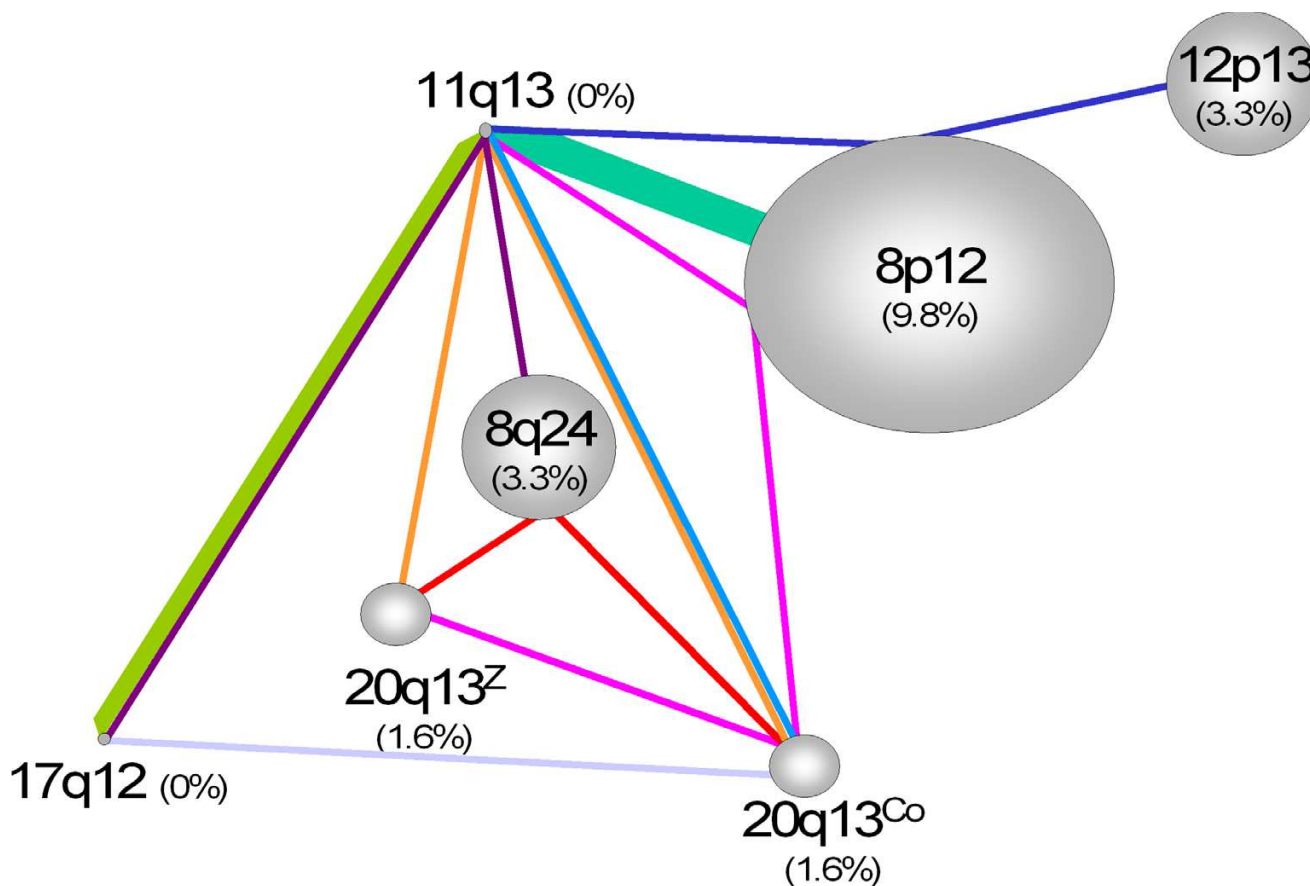


Figure 2
Co-amplification network. Schematic representation of frequencies of single amplifications and co-amplifications in 128 breast tumors samples. The size of spheres represents the frequency of region amplified as single. Lines of the same color represent co-amplification and the thickness of lines represents the frequency of the co-amplification: small: 1.6%, medium: 3.3%, large: 8.2%. For instance, the pink line linking 11q13, 8p12, 20q13^{Co} and 20q13^Z represents a co-amplification of all these regions found in 1.6% of informative cases (N = 128).

Table 3: Cox univariate analyses of metastasis-free survival.

Region of amplification	Population			5-year M FS [95% CI]		Hazard ratio [95% CI]	p-value
	W hole	N +	N -	With amplification	Without amplification		
8p12	+			68.75 [56.73–83.3]	82.4 [76.6–88.7]	2.25 [1.28–3.93]	0.0046
8p12		+		63.2 [46.6–85.6]	72.6 [63–83.67]	1.87 [0.95–3.71]	0.071
8p12			+	73.77 [57.59–94.49]	91.33 [85.37–97.70]	2.98 [1.1–8.06]	0.031
8q24	+			78.6 [59.8–100]	82.61 [77.63–87.92]	0.825 [0.25–2.75]	0.75
8q24		+		75 [50.3–100]	74.53 [66.32–83.75]	0.728 [0.17–3.04]	0.66
8q24			+	83.3 [58.3–100]	89.55 [84.09–95.36]	0.825 [0.09–7.66]	0.87
11q13	+			75.93 [65.28–88.31]	83.95 [79.18–89]	1.46 [0.8–2.67]	0.22
11q13		+		75.72 [61.54–93.17]	74 [65.7–83.4]	0.962 [0.44–2.1]	0.92
11q13			+	76.02 [60.88–94.92]	91.72 [86.91–96.80]	2.46 [0.93–6.48]	0.069
12p13	+			91.67 [77.29–100]	82.23 [77.85–86.85]	0.427 [0.06–3.08]	0.4
12p13		+		100 [100–100]	72.14 [64.84–80.26]	*	1
12p13			+	83.3 [58.3–100]	91.28 [86.85–95.94]	2.46 [0.32–18.75]	0.39
17q12	+			64.7 [47.5–88.2]	83.92 [79.28–88.83]	2.09 [1.02–4.26]	0.044
17q12		+		68.2 [48.6–95.7]	75.37 [67.54–84.10]	1.24 [0.52–2.95]	0.63
17q12			+	55.6 [27.4–100]	91.25 [86.44–96.33]	4.2 [1.18–14.95]	0.027
20q13 ^Z	+			85.4 [71.27–100]	79.43 [73.82–85.47]	0.57 [0.18–1.83]	0.35
20q13 ^Z		+		90.91 [75.41–100]	63.98 [54.65–74.89]	0.186 [0.03–1.35]	0.097
20q13 ^Z			+	79.5 [57.7–100]	93.05 [88.18–98.19]	2.58 [0.55–12.15]	0.23
20q13 ^{Co}	+			90.43 [78.63–100]	79.80 [74.71–85.24]	0.364 [0.09–1.51]	0.16
20q13 ^{Co}		+		87.84 [73.37–100]	66.80 [58.20–76.66]	0.276 [0.07–1.15]	0.076
20q13 ^{Co}			+	100 [100–100]	90.40 [85.35–95.75]	*	1

*No event in the amplified group

a role in tumor initiation and/or progression. Moreover, amplification may have prognostic and/or therapeutic significance for patients with breast cancer. However, few studies have looked at multiple amplifications and their potential correlations with tumor features and patient outcome [3,4].

Using FISH on TMA, we assessed the frequency of six amplifications, their potential association and their impact on clinical outcome. FISH technique is an easy and rapid method for amplification detection [42] and may provide prognostic information sometimes superior to other methods [43].

Frequency of amplifications and correlations with prognosis

The most frequent amplification and co-amplification involved the 8p12 region. Several studies have shown that 8p12 is a common region of amplification and may harbor important breast cancer oncogenes [5,44-46]. This region, like other "hot spots" for gene amplification, may contain several genes that contribute to cell transformation. Because the exact 8p loci of significance are not known, we analyzed two subregions of 8p12 spanning many potentially relevant genes [5,44-46]. The two subregions covered genes that are amplified and most of them are overexpressed [5]. The frequency of 8p12 amplification in our breast tumor series was greater than the 10–15% commonly reported in literature, but similar to that

recently reported by Garcia *et al.* (2005) [45]. Our results strengthen the idea that the 8p amplification, when all subregions are combined, may occur in a higher number of breast cancer than published so far. The 8p amplification was correlated with the amplification of 11q13 region: while 24.6% of tumors contained either amplified 8p12 region or 11q13 region, simultaneous amplification of both was seen in 10.8%. This result is in agreement with a previous study [47,48]. This suggests a coordinated mechanism of amplification and oncogene activation, and some kind of relation between proteins encoded by genes from the two regions. The 8p12 amplification tended to have aggressive tumor features such as high proliferative index and high SBR grade, but no association with histological subtype was found. With respect to prognosis, the 8p amplification was a significant predictor of reduced MFS. Multivariate analyses indicated that amplification of 8p12 added to the prognostic power of Ki67 status to define high risk N- patients. Our findings are consistent with the idea that 8p12 is a common region of amplification that may play a role in tumor behavior and/or pathogenesis. Previous analysis of 8p12 subregional amplifications in breast cancer [5] pointed to the amplified *FGFR1* subregion as the best prognostic marker of bad disease evolution among other 8p amplifications. The identification of the best candidate drivers or the best therapeutic targets could refine the impact of the 8p12 amplification on survival and help determine which population should be targeted.

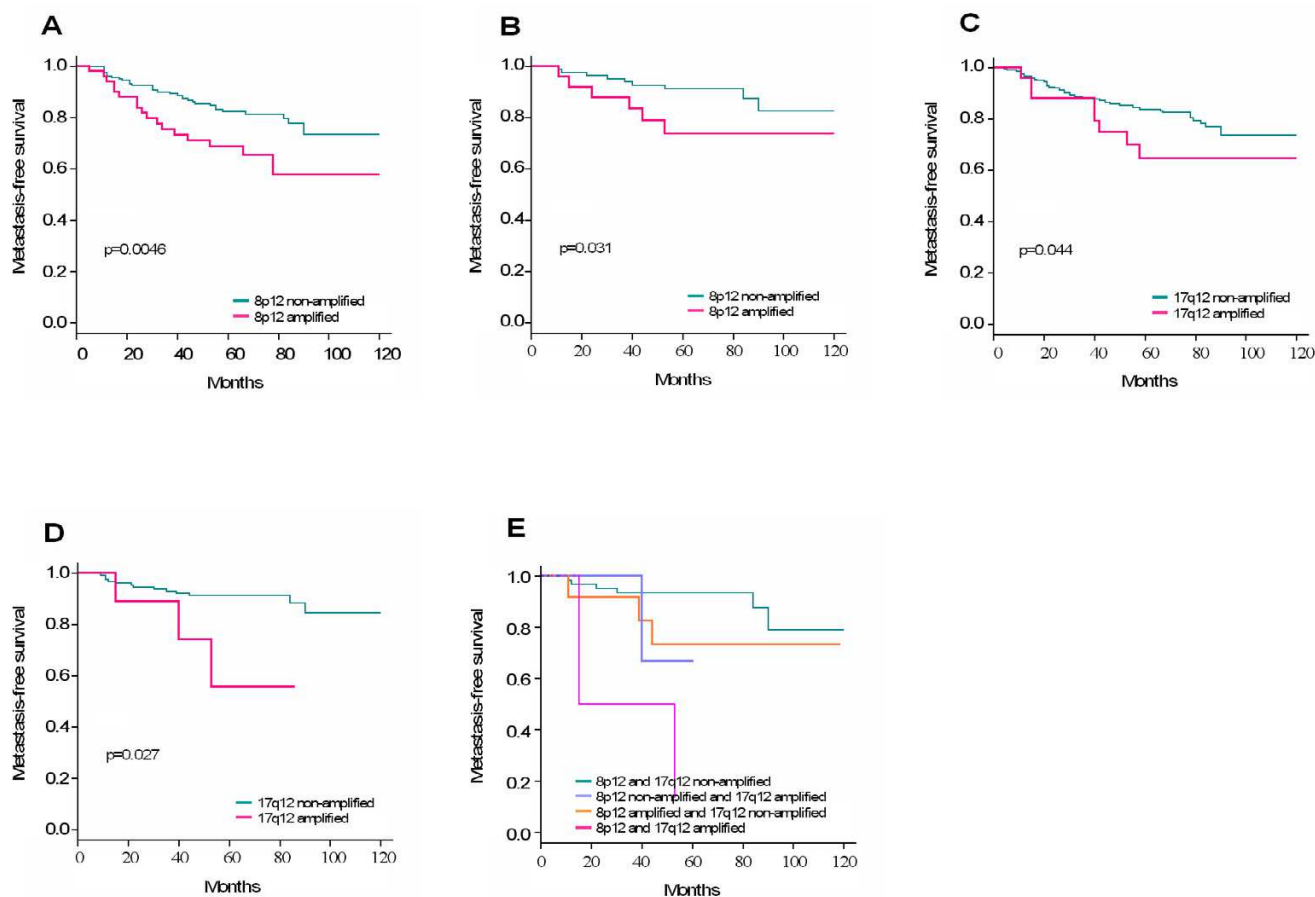


Figure 3
Amplification status and associated metastasis-free survival in breast cancer. **A.** Impact of the amplification of 8p12 region on MFS of the whole population (N = 219). **B.** Impact of the amplification of 8p12 region on MFS of N- patients (N = 114). **C.** Impact of the amplification of 17q12 region on MFS of the whole population (N = 272). **D.** Impact of the amplification of 17q12 region on MFS of N- patients (N = 140). **E.** Impact of the co-amplification of 8p12 and 17q12 regions on MFS of N- patients (N = 84). Kaplan-Meier curves illustrate MFS according to the status of amplification of different regions analyzed.

The *MYC* gene on 8q24 encodes a transcriptional regulator whose expression is strongly associated with cell proliferation. *MYC* amplification occurs in several types of cancers [49,50]. We found that the incidence of *MYC* amplification was in the range of those described previously [19]. About 13% of tumors contained either amplified *MYC* or *ERBB2*, whereas simultaneous amplification of both was seen in 1.9%. About 22% of tumors con-

tained either amplified *MYC* or *CCND1*, whereas simultaneous amplification of both was found in 4.2%. *MYC* amplification was correlated with high grade and tended to be associated with high proliferation index, in agreement with previous studies [19]. Although the expression of the *MYC* protein is stimulated by estrogen and down-regulated by tamoxifen in hormone-responsive breast tumors in vitro [51-54], we found that *MYC* amplification

Table 4: Cox multivariate analysis of metastasis free survival for patients without axillary lymph node invasion.

Variable	Coefficient value	Hazard ratio 95% CI	p-value
8p12	0.925	1	0.15
Non Amplified			
Amplified		2.52 (0.72–8.79)	
Ki67	1.29	1	0.055
<20			
≥20		3.63 (0.97–13.52)	

Table 5: Correlation between the amplification and molecular breast subtypes.

Region of amplification	Basal	Non Basal	p-value	ERBB2	Non ERBB2	p-value	Luminal A	Non Luminal A	p-value
	No. of patients (%)			No. of patients (%)			No. of patients (%)		
11q13									
Amplification	1 (5.5)	22 (45.8)	p = 0.006	2 (25)	21 (36.2)	NS	19 (57.6)	4 (12.1)	p = 0.0003
No Amplification	17 (94.5)	26 (54.2)		6 (75)	37 (63.8)		14 (42.4)	29 (87.9)	
12p13									
Amplification	5 (27.8)	2 (4.2)	p = 0.02	1 (11.1)	6 (10.5)	NS	1 (3.1)	6 (17.6)	NS
No Amplification	13 (72.2)	46 (95.8)		8 (88.9)	51 (89.5)		31 (96.9)	28 (82.4)	
17q12									
Amplification	0 (0)	6 (17.6)	NS	5 (71.4)	1 (2.2)	p = 2.061e-06	0 (0)	6 (20)	NS
No Amplification	19 (100)	28 (82.4)		2 (28.6)	45 (97.8)		23 (100)	24 (80)	

NS: Not significant

was correlated with the absence of estrogen receptor, which is in agreement with other studies [21,55] but contradictory to others [56,57]. No correlation was found with hormone therapy (data not shown). With respect to prognosis, MYC amplification was not associated with MFS, neither in the whole population nor in the two different lymph node populations of patients. This is consistent with a previous study [58].

Amplification of the 11q13 region is a relatively frequent event in breast tumors [59]. This region harbors four distinct subregions of amplification, which can be amplified independently or together in different combinations [59,60]. Candidate genes have been suggested such as CCND1, EMS1, and PAK1 [60]. Amplification of CCND1 is within the most frequently amplified subregion and is found in two-thirds of all 11q13 amplifications. CCND1 overexpression promotes tumorigenesis in transgenic mice [61]. Amplification could promote sustained expression, which may cause the cell to cycle continuously. Amplification of CCND1 was found in 19.6% which is close to what is usually found in breast tumors. No association with histoclinical factors or survival was found, in disagreement with published data [22,62].

Amplification of 12p13 in breast cancers was first identified by Dib *et al.* (1994) [6] and characterized by comparative genomic hybridization by Yao *et al.* (2006) [7]. Overexpression of presumptive amplicon genes was found in medullary breast cancers [25]. Amplification of the short arm of chromosome 12, mostly as isochromosome, or as amplified 12p11-12 and 12p13 regions, is a hallmark of testicular germ cell tumors (TGCT) [63-65] and its overrepresentation is related to invasive growth of TGCT [66]. The 12p13 region harbors several candidate

cancer genes. Human embryonic stem cell genes NANOG, GDF3 and STELLA, which are downregulated when cells commit differentiation, are expressed in TGCT and in breast cancers [67,68]. This suggests a role of these stem cell genes in carcinoma progression. Like CCND1, the CCND2 protein is involved in G1 phase of the cell cycle. NOL1 encodes the nucleolar protein P120, a proliferation-associated antigen that is temporally regulated during the cell cycle with an increase in protein expression at the G1/S transition. The choice of the NOL1 region for FISH was further suggested because its protein expression is associated with overall survival in node-negative breast cancers [69]. However, we did not find any association between amplification and survival. The 12p13 amplicon was correlated with 20q13², which may also be associated with proliferation.

ERBB2 amplification was found in 9.9% of tumors and was associated with high grade, absence of steroid receptors, overexpression of ERBB2 protein, and high proliferation index, which is an agreement with previous studies [17,70,71]. In univariate analysis, ERBB2 amplification was associated with MFS in the whole population and in N- patients. This is consistent with a poor outcome reported in several studies [43,71-73].

We found the 20q13 region amplified in 8.5–9.9% of tumors, which is consistent with frequencies previously reported in sporadic breast cancers [3,27-29] as well as in familial breast cancer [74]. The 20q13 amplified region was associated with 8q24, 11q13 and 12p13 amplifications. Co-amplification of 11q13/20q13 occurred in 1.6% of cases. The 20q13^{Co} amplification was associated with high grade and axillary lymph node invasion, in agreement with previous studies [27,29]. Amplification of

20q13^Z was associated with progesterone receptor negativity and with an accumulation of P53 in cells. Aberrant expression of 20q13 genes may be selected during breast cancer progression because it allows breast cells to overcome senescence and/or apoptosis. This is likely to be due to *ZNF217* which promotes immortalization of human mammary epithelial cells [33] and plays a role in suppressing apoptosis [34]. Overexpression of other genes such as *AURKA* or *MYBL2*, which encode proteins involved in cell cycle regulation, could generate genomic instability. This accumulation of alterations could then lead to an increased sensitivity to chemotherapy and may explain the better prognosis for patients with amplified 20q13^{Co} region [29].

Amplifications and molecular subtypes

We found that the 12p13 amplification was correlated with the basal subtype, which is in agreement with previous expression profiling data [25]. Moreover, the 12p13 amplification was correlated with high grade, absence of steroid receptors and high proliferation index, which are all features of the basal subtype. In contrast, the 11q13 (*CCND1*) amplification was negatively correlated with the basal subtype and strongly correlated with the luminal A subtype. This is consistent with a previous study [75] that found an inverse correlation between basal-like markers and *CCND1* amplification.

Conclusion

Our results show that regional amplification and co-amplification can be associated with pejorative evolution of breast cancer. Prognosis relevance applies for 8p12 and 17q12 amplifications analyzed as individual variable, and for 8p12/17q12 co-amplification. The 8p12 region has the most important impact on clinical outcome in two populations of patients: whole and axillary lymph node-negative. Therefore, 8p12 amplification could be used as a marker of adverse evolution in good prognosis breast cancer.

Abbreviations

Amp: Amplification, BAC: Bacterial artificial chromosome, ER: Estrogen receptor, FISH: Fluorescence in situ hybridization, IHC: Immunohistochemistry, MFS: Metastasis-free survival, N-: axillary lymph node negative, N+: axillary lymph node positive, NS: Not significant, PR: Progesterone receptor, TGCT: Testicular germ cell tumors, TMA: Tissue microarray.

Competing interests

The author(s) declare that they have no competing interests.

Authors' contributions

AL, FS, CG, NC, FM, VGB carried out the FISH experiments, tissue microarray and immunohistochemistry were done by JG and read by ECJ, JJ. CZ, PF and BE did the statistical analyses. PV provided clinical data. AL, DB and MC drafted the manuscript. PV, DB and MC designed and coordinated the study. All authors read and approved the final manuscript.

Additional material

Additional file 1

Correlation between amplified regions analyzed by FISH.xls

Click here for file

[<http://www.biomedcentral.com/content/supplementary/1471-2407-6-245-S1.xls>]

Additional file 2

Correlation between amplified regions determined by FISH and histoclinical factors.xls

Click here for file

[<http://www.biomedcentral.com/content/supplementary/1471-2407-6-245-S2.xls>]

Acknowledgements

We thank F. Birg, D. Maraninchi and L. Xerri for encouragements, C. Chabannon for biobank sample management. This work was supported by Institut Paoli-Calmettes, INSERM, and grants from Ligue Nationale Contre le Cancer (LNCC) (Label 2003–2006), the Association pour la Recherche contre le Cancer (ARC-3128) and Ministries of Health and Research (Cancéropôle PACA). CG, FM, and FS have been supported by a fellowship from Ministry of Research, VGB by a fellowship from ARC, and AL by a fellowship from LNCC.

References

1. Beckmann MW, Niederacher D, Schnurch HG, Gusterson BA, Bender HG: **Multistep carcinogenesis of breast cancer and tumour heterogeneity.** *J Mol Med* 1997, **75(6)**:429-439.
2. Tanner MM, Tirkkonen M, Kallioniemi A, Isola J, Kuukasjarvi T, Collins C, Kowbel D, Guan XY, Trent J, Gray JW, Meltzer P, Kallioniemi OP: **Independent amplification and frequent co-amplification of three nonsyntenic regions on the long arm of chromosome 20 in human breast cancer.** *Cancer Res* 1996, **56(15)**:3441-3445.
3. Cuny M, Kramar A, Courjal F, Johansdottir V, Iacopetta B, Fontaine H, Grenier J, Culine S, Theillet C: **Relating genotype and phenotype in breast cancer: an analysis of the prognostic significance of amplification at eight different genes or loci and of p53 mutations.** *Cancer Res* 2000, **60(4)**:1077-1083.
4. Al-Kuraya K, Schraml P, Torhorst J, Tapia C, Zaharieva B, Novotny H, Spichtin H, Maurer R, Mirlacher M, Kochli O, Zuber M, Dieterich H, Mross F, Wilber K, Simon R, Sauter G: **Prognostic relevance of gene amplifications and coamplifications in breast cancer.** *Cancer Res* 2004, **64(23)**:8534-8540.
5. Gelsi-Boyer V, Orsetti B, Cervera N, Finetti P, Sircoulomb F, Rouge C, Lasorsa L, Letessier A, Ginestier C, Monville F, Esteyries S, Adelaide J, Esterni B, Henry C, Ethier SP, Bibeau F, Mozziconacci MJ, Charafe-Jauffret E, Jacquemier J, Bertucci F, Birnbaum D, Theillet C, Chaffanet M: **Comprehensive profiling of 8p11-12 amplification in breast cancer.** *Mol Cancer Res* 2005, **3(12)**:655-667.
6. Dib A, Adelaide J, Coujal F, Courseaux A, Jacquemier J, Gaudray P, Theillet C, Pebusque MJ, Birnbaum D: **Co-amplification in human breast tumors and physical linkage at chromosomal band**

- 12p13, of CCND2 and FGF6 genes.** *International Journal of Oncology* 1994, **5**:1375-1378.
7. Yao J, Weremowicz S, Feng B, Gentleman RC, Marks JR, Gelman R, Brennan C, Polyak K: **Combined cDNA array comparative genomic hybridization and serial analysis of gene expression analysis of breast tumor progression.** *Cancer Res* 2006, **66(8)**:4065-4078.
 8. Slamon DJ, Clark GM, Wong SG, Levin WJ, Ullrich A, McGuire WL: **Human breast cancer: correlation of relapse and survival with amplification of the HER-2/neu oncogene.** *Science* 1987, **235(4785)**:177-182.
 9. Kallioniemi OP, Kallioniemi A, Kurisu W, Thor A, Chen LC, Smith HS, Waldman FM, Pinkel D, Gray JW: **ERBB2 amplification in breast cancer analyzed by fluorescence in situ hybridization.** *Proc Natl Acad Sci U S A* 1992, **89(12)**:5321-5325.
 10. Vogel CL, Cobleigh MA, Tripathy D, Gutheil JC, Harris LN, Fehrenbacher L, Slamon DJ, Murphy M, Novotny WF, Burchmore M, Shak S, Stewart SJ, Press M: **Efficacy and safety of trastuzumab as a single agent in first-line treatment of HER2-overexpressing metastatic breast cancer.** *J Clin Oncol* 2002, **20(3)**:719-726.
 11. Theillet C, Adelaide J, Louason G, Bonnet-Dorion F, Jacquemier J, Adnane J, Longy M, Katsaros D, Sismondi P, Gaudray P, et al: **FGFR1 and PLAT genes and DNA amplification at 8p12 in breast and ovarian cancers.** *Genes Chromosomes Cancer* 1993, **7(4)**:219-226.
 12. Courjal F, Theillet C: **Comparative genomic hybridization analysis of breast tumors with predetermined profiles of DNA amplification.** *Cancer Res* 1997, **57(19)**:4368-4377.
 13. Adelaide J, Chaffanet M, Imbert A, Allione F, Geneix J, Popovici C, van Alewijk D, Trapman J, Zeillinger R, Borresen-Dale AL, Lidereau R, Birnbaum D, Pebusque MJ: **Chromosome region 8p11-p21: refined mapping and molecular alterations in breast cancer.** *Genes Chromosomes Cancer* 1998, **22(3)**:186-199.
 14. Ugolini F, Adelaide J, Charafe-Jauffret E, Nguyen C, Jacquemier J, Jordan B, Birnbaum D, Pebusque MJ: **Differential expression assay of chromosome arm 8p genes identifies Frizzled-related (FRP1/FRZB) and Fibroblast Growth Factor Receptor 1 (FGFR1) as candidate breast cancer genes.** *Oncogene* 1999, **18(10)**:1903-1910.
 15. Bonilla M, Ramirez M, Lopez-Cueto J, Gariglio P: **In vivo amplification and rearrangement of c-myc oncogene in human breast tumors.** *J Natl Cancer Inst* 1988, **80(9)**:665-671.
 16. Berns EM, Klijn JG, van Putten WL, van Staveren IL, Portengen H, Foekens JA: **c-myc amplification is a better prognostic factor than HER2/neu amplification in primary breast cancer.** *Cancer Res* 1992, **52(5)**:1107-1113.
 17. Berns EM, Foekens JA, van Putten WL, van Staveren IL, Portengen H, de Koning WC, Klijn JG: **Prognostic factors in human primary breast cancer: comparison of c-myc and HER2/neu amplification.** *J Steroid Biochem Mol Biol* 1992, **43(1-3)**:13-19.
 18. Roux-Dosseto M, Romain S, Dussault N, Desideri C, Piana L, Bonnier P, Tubiana N, Martin PM: **c-myc gene amplification in selected node-negative breast cancer patients correlates with high rate of early relapse.** *Eur J Cancer* 1992, **28A(10)**:1600-1604.
 19. Deming SL, Nass SJ, Dickson RB, Troock BJ: **C-myc amplification in breast cancer: a meta-analysis of its occurrence and prognostic relevance.** *Br J Cancer* 2000, **83(12)**:1688-1695.
 20. Schlotter CM, Vogt U, Bosse U, Mersch B, Wassmann K: **C-myc, not HER-2/neu, can predict recurrence and mortality of patients with node-negative breast cancer.** *Breast Cancer Res* 2003, **5(2)**:R30-6.
 21. Aulmann S, Adler N, Rom J, Helmchen B, Schirmacher P, Sinn HP: **c-myc amplifications in primary breast carcinomas and their local recurrences.** *J Clin Pathol* 2006, **59(4)**:424-428.
 22. Seshadri R, Lee CS, Hui R, McCaul K, Horsfall DJ, Sutherland RL: **Cyclin D1 amplification is not associated with reduced overall survival in primary breast cancer but may predict early relapse in patients with features of good prognosis.** *Clin Cancer Res* 1996, **2(7)**:1177-1184.
 23. Kononen J, Bubendorf L, Kallioniemi A, Barlund M, Schraml P, Leighton S, Torhorst J, Mihatsch MJ, Sauter G, Kallioniemi OP: **Tissue microarrays for high-throughput molecular profiling of tumor specimens.** *Nat Med* 1998, **4(7)**:844-847.
 24. Naidu R, Wahab NA, Yadav MM, Kutty MK: **Expression and amplification of cyclin D1 in primary breast carcinomas: relationship with histopathological types and clinico-pathological parameters.** *Oncol Rep* 2002, **9(2)**:409-416.
 25. Bertucci F, Finetti P, Cervera N, Charafe-Jauffret E, Mamessier E, Adelaide J, Debono S, Houvenaeghel G, Maraninchi D, Viens P, Charpin C, Jacquemier J, Birnbaum D: **Gene expression profiling shows medullary breast cancer is a subgroup of basal breast cancers.** *Cancer Res* 2006, **66(9)**:4636-4644.
 26. Isola JJ, Kallioniemi OP, Chu LW, Fuqua SA, Hilsenbeck SG, Osborne CK, Waldman FM: **Genetic aberrations detected by comparative genomic hybridization predict outcome in node-negative breast cancer.** *Am J Pathol* 1995, **147(4)**:905-911.
 27. Tanner MM, Tirkkonen M, Kallioniemi A, Holli K, Collins C, Kowbel D, Gray JW, Kallioniemi OP, Isola J: **Amplification of chromosomal region 20q13 in invasive breast cancer: prognostic implications.** *Clin Cancer Res* 1995, **1(12)**:1455-1461.
 28. Hodgson JG, Chin K, Collins C, Gray JW: **Genome amplification of chromosome 20 in breast cancer.** *Breast Cancer Res Treat* 2003, **78(3)**:337-345.
 29. Ginestier C, Cervera N, Finetti P, Esteyries S, Esterni B, Adelaide J, Xerri L, Viens P, Jacquemier J, Charafe-Jauffret E, Chaffanet M, Birnbaum D, Bertucci F: **Prognosis and gene expression profiling of 20q13-amplified breast cancers.** *Clinical Cancer Research* 2006, **12(15)**:4533-4544.
 30. Forozan F, Mhalmaki EH, Monni O, Chen Y, Veldman R, Jiang Y, Gooden GC, Ethier SP, Kallioniemi A, Kallioniemi OP: **Comparative genomic hybridization analysis of 38 breast cancer cell lines: a basis for interpreting complementary DNA microarray data.** *Cancer Res* 2000, **60(16)**:4519-4525.
 31. Sen S, Zhou H, White RA: **A putative serine/threonine kinase encoding gene BTAK on chromosome 20q13 is amplified and overexpressed in human breast cancer cell lines.** *Oncogene* 1997, **14(18)**:2195-2200.
 32. Collins C, Rommens JM, Kowbel D, Godfrey T, Tanner M, Hwang SI, Polikoff D, Nonet G, Cochran J, Myambo K, Jay KE, Froula J, Cloutier T, Kuo WL, Yaswen P, Dairkee S, Giovanola J, Hutchinson GB, Isola J, Kallioniemi OP, Palazzolo M, Martin C, Ericsson C, Pinkel D, Albertson D, Li WB, Gray JW: **Positional cloning of ZNF217 and NABC1: genes amplified at 20q13.2 and overexpressed in breast carcinoma.** *Proc Natl Acad Sci U S A* 1998, **95(15)**:8703-8708.
 33. Nonet GH, Stampfer MR, Chin K, Gray JW, Collins CC, Yaswen P: **The ZNF217 gene amplified in breast cancers promotes immortalization of human mammary epithelial cells.** *Cancer Res* 2001, **61(4)**:1250-1254.
 34. Huang G, Krig S, Kowbel D, Xu H, Hyun B, Volik S, Feuerstein B, Mills GB, Stokoe D, Yaswen P, Collins C: **ZNF217 suppresses cell death associated with chemotherapy and telomere dysfunction.** *Hum Mol Genet* 2005, **14(21)**:3219-3225.
 35. Ginestier C, Charafe-Jauffret E, Bertucci F, Eisinger F, Geneix J, Bechlian D, Conte N, Adelaide J, Toiron Y, Nguyen C, Viens P, Mozziconacci MJ, Houlgatte R, Birnbaum D, Jacquemier J: **Distinct and complementary information provided by use of tissue and DNA microarrays in the study of breast tumor markers.** *Am J Pathol* 2002, **161(4)**:1223-1233.
 36. Chin SF, Daigo Y, Huang HE, Iyer NG, Callagy G, Kranjac T, Gonzalez M, Sangan T, Earl H, Caldas C: **A simple and reliable pretreatment protocol facilitates fluorescent in situ hybridisation on tissue microarrays of paraffin wax embedded tumour samples.** *Mol Pathol* 2003, **56(5)**:275-279.
 37. Huang TJ, Huang BJ, Liang QW, Huang CW, Fang Y: **Dual fluorescence in situ hybridization in detection of HER-2 oncogene amplification in primary hepatocellular carcinoma.** *Hepatobiliary Pancreat Dis Int* 2004, **3(1)**:62-68.
 38. **Website title [www.metasytems.de].**
 39. **Website title [http://www.R-project.org].**
 40. Perou CM, Sorlie T, Eisen MB, van de Rijn M, Jeffrey SS, Rees CA, Pollack JR, Ross DT, Johnsen H, Akslen LA, Fluge O, Pergamenschikov A, Williams C, Zhu SX, Lonning PE, Borresen-Dale AL, Brown PO, Botstein D: **Molecular portraits of human breast tumours.** *Nature* 2000, **406(6797)**:747-752.
 41. Sorlie T, Tibshirani R, Parker J, Hastie T, Marron JS, Nobel A, Deng S, Johnsen H, Pesich R, Geisler S, Demeter J, Perou CM, Lonning PE, Brown PO, Borresen-Dale AL, Botstein D: **Repeated observation of breast tumor subtypes in independent gene expression data sets.** *Proc Natl Acad Sci U S A* 2003, **100(14)**:8418-8423.

42. Gray JW, Collins C, Henderson IC, Isola J, Kallioniemi A, Kallioniemi OP, Nakamura H, Pinkel D, Stokke T, Tanner M, et al.: **Molecular cytogenetics of human breast cancer.** *Cold Spring Harb Symp Quant Biol* 1994, **59**:645-652.
43. Pauletti G, Dandekar S, Rong H, Ramos L, Peng H, Seshadri R, Slamon DJ: **Assessment of methods for tissue-based detection of the HER-2/neu alteration in human breast cancer: a direct comparison of fluorescence in situ hybridization and immunohistochemistry.** *J Clin Oncol* 2000, **18(21)**:3651-3664.
44. Ray ME, Yang ZQ, Albertson D, Kleer CG, Washburn JG, Macoska JA, Ethier SP: **Genomic and expression analysis of the 8p11-12 amplicon in human breast cancer cell lines.** *Cancer Res* 2004, **64(1)**:40-47.
45. Garcia MJ, Pole JC, Chin SF, Teschendorff A, Naderi A, Ozdag H, Vias M, Kranjac T, Subkhankulova T, Paish C, Ellis I, Brenton JD, Edwards PA, Caldas C: **A 1 Mb minimal amplicon at 8p11-12 in breast cancer identifies new candidate oncogenes.** *Oncogene* 2005, **24(33)**:5235-5245.
46. Prentice LM, Shadeo A, Lestou VS, Miller MA, deLeeuw RJ, Makretsov N, Turbin D, Brown LA, Macpherson N, Yorida E, Cheang MC, Bentley J, Chia S, Nielsen TO, Gilks CB, Lam W, Huntsman DG: **NRG1 gene rearrangements in clinical breast cancer: identification of an adjacent novel amplicon associated with poor prognosis.** *Oncogene* 2005, **24(49)**:7281-7289.
47. Courjal F, Cuny M, Simony-Lafontaine J, Louason G, Speiser P, Zeillinger R, Rodriguez C, Theillet C: **Mapping of DNA amplifications at 15 chromosomal localizations in 1875 breast tumors: definition of phenotypic groups.** *Cancer Res* 1997, **57(19)**:4360-4367.
48. Bautista S, Theillet C: **CCND1 and FGFR1 coamplification results in the colocalization of 11q13 and 8p12 sequences in breast tumor nuclei.** *Genes Chromosomes Cancer* 1998, **22(4)**:268-277.
49. Schraml P, Kononen J, Bubendorf L, Moch H, Bissig H, Nocito A, Mihatsch MJ, Kallioniemi OP, Sauter G: **Tissue microarrays for gene amplification surveys in many different tumor types.** *Clin Cancer Res* 1999, **5(8)**:1966-1975.
50. Rummukainen JK, Salminen T, Lundin J, Kytola S, Joensuu H, Isola JJ: **Amplification of c-myc by fluorescence in situ hybridization in a population-based breast cancer tissue array.** *Mod Pathol* 2001, **14(10)**:1030-1035.
51. Dubik D, Shiu RP: **Transcriptional regulation of c-myc oncogene expression by estrogen in hormone-responsive human breast cancer cells.** *J Biol Chem* 1988, **263(25)**:12705-12708.
52. Santos GF, Scott GK, Lee WM, Liu E, Benz C: **Estrogen-induced post-transcriptional modulation of c-myc proto-oncogene expression in human breast cancer cells.** *J Biol Chem* 1988, **263(20)**:9565-9568.
53. van der Burg B, van Selm-Miltenburg AJ, de Laat SW, van Zoelen EJ: **Direct effects of estrogen on c-fos and c-myc protooncogene expression and cellular proliferation in human breast cancer cells.** *Mol Cell Endocrinol* 1989, **64(2)**:223-228.
54. Le Roy X, Escot C, Brouillet JP, Theillet C, Maudelonde T, Simony-Lafontaine J, Pujol H, Rochefort H: **Decrease of c-erbB-2 and c-myc RNA levels in tamoxifen-treated breast cancer.** *Oncogene* 1991, **6(3)**:431-437.
55. Naidu R, Wahab NA, Yadav M, Kutty MK: **Protein expression and molecular analysis of c-myc gene in primary breast carcinomas using immunohistochemistry and differential polymerase chain reaction.** *Int J Mol Med* 2002, **9(2)**:189-196.
56. Varley JM, Swallow JE, Brammar WJ, Whittaker JL, Walker RA: **Alterations to either c-erbB-2 (neu) or c-myc proto-oncogenes in breast carcinomas correlate with poor short-term prognosis.** *Oncogene* 1987, **1**:423-430.
57. Berns EM, Klijn JG, van Staveren IL, Portengen H, Noordegraaf E, Foekens JA: **Prevalence of amplification of the oncogenes c-myc, HER2/neu, and int-2 in one thousand human breast tumours: correlation with steroid receptors.** *Eur J Cancer* 1992, **28(2-3)**:697-700.
58. Park K, Kwak K, Kim J, Lim S, Han S: **c-myc amplification is associated with HER2 amplification and closely linked with cell proliferation in tissue microarray of nonselected breast cancers.** *Hum Pathol* 2005, **36(6)**:634-639.
59. Karlseder J, Zeillinger R, Schneeberger C, Czerwenka K, Speiser P, Kubista E, Birnbaum D, Gaudray P, Theillet C: **Patterns of DNA amplification at band q13 of chromosome 11 in human breast cancer.** *Genes Chromosomes Cancer* 1994, **9(1)**:42-48.
60. Ormandy CJ, Musgrove EA, Hui R, Daly RJ, Sutherland RL: **Cyclin D1, EMS1 and 11q13 amplification in breast cancer.** *Breast Cancer Res Treat* 2003, **78(3)**:323-335.
61. Wang TC, Cardiff RD, Zukerberg L, Lees E, Arnold A, Schmidt EV: **Mammary hyperplasia and carcinoma in MMTV-cyclin D1 transgenic mice.** *Nature* 1994, **369(6482)**:669-671.
62. Bieche I, Olivi M, Nogues C, Vidaud M, Lidereau R: **Prognostic value of CCND1 gene status in sporadic breast tumours, as determined by real-time quantitative PCR assays.** *Br J Cancer* 2002, **86(4)**:580-586.
63. Henegariu O, Vance GH, Heiber D, Pera M, Heerema NA: **Triple-color FISH analysis of 12p amplification in testicular germ-cell tumours using 12p band-specific painting probes.** *J Mol Med* 1998, **76(9)**:648-655.
64. Summersgill B, Goker H, Weber-Hall S, Huddart R, Horwich A, Shipley J: **Molecular cytogenetic analysis of adult testicular germ cell tumours and identification of regions of consensus copy number change.** *Br J Cancer* 1998, **77(2)**:305-313.
65. Looijenga LH, Oosterhuis JW: **Pathogenesis of testicular germ cell tumours.** *Rev Reprod* 1999, **4(2)**:90-100.
66. Rosenberg C, Van Gurp RJ, Geelen E, Oosterhuis JW, Looijenga LH: **Overrepresentation of the short arm of chromosome 12 is related to invasive growth of human testicular seminomas and nonseminomas.** *Oncogene* 2000, **19(51)**:5858-5862.
67. Ezeh UI, Turek PJ, Reijo RA, Clark AT: **Human embryonic stem cell genes OCT4, NANOG, STELLAR, and GDF3 are expressed in both seminoma and breast carcinoma.** *Cancer* 2005, **104(10)**:2255-2265.
68. Korkola JE, Houldsworth J, Chadalavada RS, Olshen AB, Dobrzynski D, Reuter VE, Bosl GJ, Chaganti RS: **Down-regulation of stem cell genes, including those in a 200-kb gene cluster at 12p13.31, is associated with in vivo differentiation of human male germ cell tumours.** *Cancer Res* 2006, **66(2)**:820-827.
69. McGrath PC, Holley DT, Hamby LS, Powell DE, Mattingly C, Freeman JW: **Proliferation-associated nucleolar antigen P120: a prognostic marker in node-negative breast cancer.** *Surgery* 1994, **116(4)**:616-20; discussion 20-1.
70. Garcia I, Dietrich PY, Aapro M, Vauthier G, Vadas L, Engel E: **Genetic alterations of c-myc, c-erbB-2, and c-Ha-ras protooncogenes and clinical associations in human breast carcinomas.** *Cancer Res* 1989, **49(23)**:6675-6679.
71. Quenel N, Wafflard J, Bonichon F, de Mascarel I, Trojani M, Durand M, Avril A, Coindre JM: **The prognostic value of c-erbB2 in primary breast carcinomas: a study on 942 cases.** *Breast Cancer Res Treat* 1995, **35(3)**:283-291.
72. Press MF, Bernstein L, Thomas PA, Meisner LF, Zhou JY, Ma Y, Hung G, Robinson RA, Harris C, El-Naggar A, Slamon DJ, Phillips RN, Ross JS, Wolman SR, Flom KJ: **HER-2/neu gene amplification characterized by fluorescence in situ hybridization: poor prognosis in node-negative breast carcinomas.** *J Clin Oncol* 1997, **15(8)**:2894-2904.
73. Kakar S, Puangsuvan N, Stevens JM, Serenas R, Mangan G, Sahai S, Mihalov ML: **HER-2/neu assessment in breast cancer by immunohistochemistry and fluorescence in situ hybridization: comparison of results and correlation with survival.** *Mol Diagn* 2000, **5(3)**:199-207.
74. Melchor L, Alvarez S, Honrado E, Palacios J, Barroso A, Diez O, Osorio A, Benitez J: **The accumulation of specific amplifications characterizes two different genomic pathways of evolution of familial breast tumors.** *Clin Cancer Res* 2005, **11(24 Pt 1)**:8577-8584.
75. Reis-Filho JS, Savage K, Lambros MB, James M, Steele D, Jones RL, Dowsett M: **Cyclin D1 protein overexpression and CCND1 amplification in breast carcinomas: an immunohistochemical and chromogenic in situ hybridisation analysis.** *Mod Pathol* 2006, **19(7)**:999-1009.

Pre-publication history

The pre-publication history for this paper can be accessed here:

<http://www.biomedcentral.com/1471-2407/6/245/prepub>

Publish with **BioMed Central** and every scientist can read your work free of charge

"BioMed Central will be the most significant development for disseminating the results of biomedical research in our lifetime."

Sir Paul Nurse, Cancer Research UK

Your research papers will be:

- available free of charge to the entire biomedical community
- peer reviewed and published immediately upon acceptance
- cited in PubMed and archived on PubMed Central
- yours — you keep the copyright

Submit your manuscript here:
http://www.biomedcentral.com/info/publishing_adv.asp

