



HAL
open science

Mitochondrial activities in human cultured skin fibroblasts contaminated by *Mycoplasma hyorhinis*.

Niklas Darin, Norman Kadhom, Jean-Jacques Brière, Dominique Chretien, Cécile M. Bébéar, Agnès Rötig, Arnold Munnich, Pierre Rustin

► To cite this version:

Niklas Darin, Norman Kadhom, Jean-Jacques Brière, Dominique Chretien, Cécile M. Bébéar, et al.. Mitochondrial activities in human cultured skin fibroblasts contaminated by *Mycoplasma hyorhinis*.. BMC Biochemistry, 2003, 4, pp.15. 10.1186/1471-2091-4-15 . inserm-00114072

HAL Id: inserm-00114072

<https://inserm.hal.science/inserm-00114072>

Submitted on 15 Nov 2006

HAL is a multi-disciplinary open access archive for the deposit and dissemination of scientific research documents, whether they are published or not. The documents may come from teaching and research institutions in France or abroad, or from public or private research centers.

L'archive ouverte pluridisciplinaire **HAL**, est destinée au dépôt et à la diffusion de documents scientifiques de niveau recherche, publiés ou non, émanant des établissements d'enseignement et de recherche français ou étrangers, des laboratoires publics ou privés.

Research article

Open Access

Mitochondrial activities in human cultured skin fibroblasts contaminated by *Mycoplasma hyorhinis*

Niklas Darin¹, Norman Kadhom¹, Jean-Jacques Brière¹,
Dominique Chretien¹, Cécile M Bébéar², Agnès Rötig¹, Arnold Munnich¹ and
Pierre Rustin*¹

Address: ¹Unité de Recherches sur les Handicaps Génétiques de l'Enfant, INSERM U393, Tour Lavoisier, Hôpital Necker Enfants-Malades, 149 Rue de Sèvres, 75743 Paris Cedex 15, France and ²Laboratoire de Bactériologie, Université Victor Segalen Bordeaux 2, 33076, Bordeaux Cedex, France

Email: Niklas Darin - niklas.darin@vgregion.se; Norman Kadhom - benit@necker.fr; Jean-Jacques Brière - jejac.briere@free.fr; Dominique Chretien - chretien@necker.fr; Cécile M Bébéar - Cecile.Bebear@labbebear.u-bordeaux2.fr; Agnès Rötig - roetig@necker.fr; Arnold Munnich - munnich@necker.fr; Pierre Rustin* - rustin@necker.fr

* Corresponding author

Published: 04 November 2003

Received: 20 August 2003

BMC Biochemistry 2003, 4:15

Accepted: 04 November 2003

This article is available from: <http://www.biomedcentral.com/1471-2091/4/15>

© 2003 Darin et al; licensee BioMed Central Ltd. This is an Open Access article: verbatim copying and redistribution of this article are permitted in all media for any purpose, provided this notice is preserved along with the article's original URL.

Abstract

Background: Mycoplasma contaminations are a recurrent problem in the use of cultured cells, including human cells, especially as it has been shown to impede cell cycle, triggering cell death under various conditions. More specific consequences on cell metabolism are poorly known.

Results: Here we report the lack of significant consequence of a heavy contamination by the frequently encountered mycoplasma strain, *M. hyorhinis*, on the determination of respiratory chain activities, but the potential interference when assaying citrate synthase. Contamination by *M. hyorhinis* was detected by fluorescent imaging and further quantified by the determination of the mycoplasma-specific phosphate acetyltransferase activity. Noticeably, this latter activity was not found equally distributed in various mycoplasma types, being exceptionally high in *M. hyorhinis*.

Conclusion: While we observed a trend for respiration reduction in heavily contaminated cells, no significant and specific targeting of any respiratory chain components could be identified. This suggested a potential interference with cell metabolism rather than direct interaction with respiratory chain components.

Background

The *mollicutes* (lat., *molis*, soft; *cutis*, skin) or mycoplasmas, with over 100 different species, are the smallest self-replicating organisms known at present and constitute a distinct class within the prokaryotes characterized by their lack of a rigid cell wall. They can be classified into fermentative strains, which gain energy by fermentation of carbohydrates and non-fermentative strains that are unable to metabolize carbohydrates via glycolysis. The mycoplasmas are extra cellular parasites usually attached to the

external surface of cells, but can also penetrate these [1]. In humans, *M. pneumoniae* is a frequent cause of respiratory infections, and is at the origin of approximately 20% of all community-acquired pneumonias [2]. The mycoplasmas may also lead to genitourinary and neonatal infections [3]. In addition, mycoplasmas have been implicated in the pathogenesis of AIDS [4] and rheumatoid arthritis [5], although their precise contribution is still under debate. Being 'minimal cells', mycoplasma have

also been used to investigate the machinery of self-replicating organisms [6].

Beside health problems, mycoplasma contamination constitutes one frequent problem when studying cultured cells (estimated frequency varying from 5 to 35%). The strains *M. hyorhinitis*, *M. orale*, *M. arginini*, *M. fermentans*, *M. hominis* and *Acholeplasma laidlawii* represent 90–95% of the contaminating isolates [7,8]. Contamination is initially often difficult to detect because the contaminated culture grows well and appears normal by ordinary light microscopy. In addition, mycoplasma is highly contagious and can rapidly spread through the cell stocks. The possible consequences of mycoplasma infection for the host-cells are multiple and variable, ranging from no apparent effect to extensive changes with inhibition of cell proliferation, induction of apoptosis, induction of cytokines and oxidative radicals, and malignant transformation [9–12]. There is also a possibility that mycoplasma biological activities may erroneously be interpreted as being of host origin [13].

The consequences of mycoplasma-contamination on the host cell metabolism are not well established. In mycoplasma-infected individuals, a decrease of cell respiration, dehydrogenase activities and ATP content have been described in tracheal cell explants and the cytochrome *c* oxidase (COX) activity has been claimed to be decreased in muscle tissue [14,15]. In cultured cells, the consumption of the nutrients in the medium may affect the cell metabolism by interfering with deoxyribonucleic acid, ribonucleic acid and protein synthesis [16]. The aim of this study was to evaluate the *in vitro* consequences of cultured skin fibroblasts contamination by one frequent mycoplasma strain, *M. hyorhinitis*, on mitochondrial enzyme determination. In the course of this study, *M. hyorhinitis* was quantified by a new and convenient approach using the assay of the phosphate acetyltransferase activity, absent from human cultured skin fibroblasts.

Results

Mycoplasma detection

The fluorescent Hoechst 33258 stain test showed the occurrence of nucleic acid-rich particles in the cytosol of four fibroblast cell lines. These were no longer observed after Ciprofloxacin treatment in any of these cell lines, denoting the initial presence of contaminating mycoplasma (Fig. 1). The strain of contaminating mycoplasma was subsequently identified to be *M. hyorhinitis* by PCR, DNA staining and enzyme-linked immunosorbent assay (ELISA) (not shown).

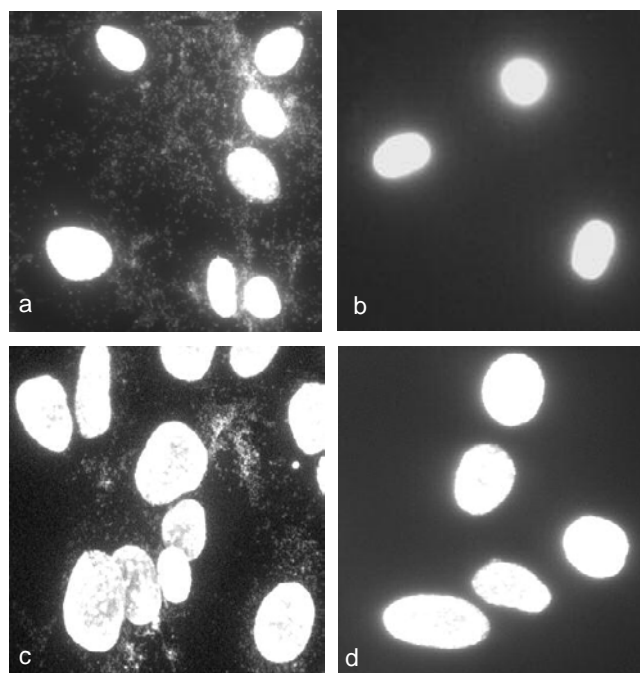


Figure 1

***In situ* fluorescent stain of *Mycoplasma hyorhinitis*.** The Hoechst 33258 fluorescent stain was used before (a) and after ciprofloxacin treatment of cultured skin fibroblasts (b). Positive (c) and negative control (d) were slides from Sigma Mycoplasma Stain Kit (MYC-I; 3T6-Swiss Albino; ATCC**CCL96*).

Mitochondrial activities

After Ciprofloxacin treatment, intact fibroblast respiration tends to slightly increase (about 10% more than infected cells). A similar trend was observed for succinate, and for malate *plus* glutamate oxidation, by digitonin-permeabilized fibroblasts (not shown). A detailed spectrophotometric study of mitochondrial respiratory chain (RC) activities was next performed on both heavily contaminated and mycoplasma-free fibroblasts (Table 1). None of the RC enzyme activities of the studied cells was found significantly changed by the Ciprofloxacin treatment. Several activities were found slightly decreased or increased upon antibiotic treatment of the cells, but the large variations associated with these measurements make these apparent changes unreliable. We next analysed the activity ratios between the components of the RC previously shown to represent the most sensitive parameters for detecting changes in RC enzyme activities [17,18]. The differences between treated and untreated cells were not statistically different for any of the ratios (Table 1). Similarly none of these ratios was found significantly different from

Table 1: Respiratory chain enzyme activities in mycoplasma contaminated fibroblasts before and after antibiotic treatment. Values are means \pm 1 SD of values obtained independently on 4 different fibroblast cultures. Data between brackets represent values for uninfected, Ciprofloxacin-naïve, fibroblasts (n > 400). NQR, NADH quinone oxidoreductase; SCCR, Succinate cytochrome c reductase; GPCCR, glycerol-3-phosphate cytochrome c reductase; QCCR, quinol cytochrome c reductase; COX, cytochrome c oxidase; CS, citrate synthase; SD, Standard deviation.

	Fibroblasts heavily contaminated with <i>M. hyorhinis</i>	Fibroblasts after Ciprofloxacin treatment
Enzyme activity (nmol/min/mg protein)	(n = 4)	(n = 4)
NQR*	20.2 \pm 3.8	15.8 \pm 0.8
SCCR	22.0 \pm 13.6	19.2 \pm 3.0
GPCCR	7.8 \pm 3.1	6.7 \pm 1.8
QCCR	70.9 \pm 25.3	66.6 \pm 15.3
COX	71.1 \pm 25.3	49.7 \pm 8.0
ATPase*	31.1 \pm 6.2	43.3 \pm 7.7
CS	18.8 \pm 7.3	15.2 \pm 4.2
Enzyme activity ratios		
COX/SCCR	3.7 \pm 1.14	2.7 \pm 0.84 (3.1 \pm 0.2)
COX/GPCCR	9.3 \pm 0.84	8.0 \pm 3.0 (7.5 \pm 0.4)
COX/QCCR	1.0 \pm 0.21	0.8 \pm 0.29 (0.7 \pm 0.05)
QCCR/SCCR	3.7 \pm 1.15	3.5 \pm 0.94 (4.0 \pm 0.2)
QCCR/GPCCR	9.3 \pm 1.5	10.5 \pm 3.9 (11.7 \pm 0.5)
SCCR/GPCCR	2.6 \pm 0.61	2.9 \pm 0.64 (2.2 \pm 0.1)
COX/CS	4.2 \pm 2.0	3.6 \pm 1.6 (2.8 \pm 0.2)
COX/ATP*	6.5 \pm 2.0	2.8 \pm 0.43 (3.4 \pm 0.6)
COX/NQR*	9.9 \pm 2.4	7.6 \pm 0.49 (10.1 \pm 1.6)
ATP/NQR*	1.6 \pm 0.38	2.7 \pm 0.61 (2.1 \pm 0.4)

* These values were only obtained for three of the four infected cell lines.

the corresponding value obtained from mycoplasma-free, Ciprofloxacin-naïve, fibroblasts (Table 1).

Phosphate acetyltransferase activity

Interestingly enough, in the course of citrate synthase activity assay, we noticed that contaminated cell extracts readily reduced DTNB in phosphate buffer before the addition of oxaloacetate (Fig. 2A). This reducing activity was not detectable anymore in treated cells. Such a rapid reduction of DTNB in the mycoplasma-contaminated cells suggested the presence of a mycoplasmal enzyme capable of cleaving acetyl-CoA. Two such enzymes have been identified in mycoplasma, namely the acetyl-CoA acetyltransferase, which forms CoA-SH and acetoacetyl-CoA from 2 acetyl-CoA, and the phosphate-dependant phosphate acetyltransferase, which yields CoA-SH and acetate from one molecule of acetyl-CoA. In order to distinguish between these two enzymes, the experiment was repeated in a buffered solution with or without phosphate (Fig. 2B). The strict dependency of the activity on the presence of phosphate indicated that the phosphate acetyltransferase activity was present in *M. hyorhinis*. The activity was next measured in titrated suspension of this mycoplasma. Owing to the high specific activity of the enzyme, the activity liberated from as low as 45,000 organisms could be spectrophotometrically detected (Fig. 3). For the

sake of comparison, a similar assay was performed on three other mycoplasma species, *M. fermentans*, *M. orale*, *M. arginini*. A ten time lower specific activity was detected in the former species, while no activity could be detected in the two latter species (Table 2).

Discussion

The contamination by mycoplasmas is a frequent problem encountered when studying cultured cells. The mycoplasmas may have a myriad of different effects upon the infected host cells, which may moreover depends on the mycoplasma species. However, all the mollicutes examined so far have truncated respiratory systems, lacking a complete tricarboxylic acid cycle and having no quinones or cytochromes, ruling out oxidative phosphorylation as an ATP-generating mechanism [19]. Our analysis of RC activity in four human skin fibroblast cell lines heavily contaminated by *M. hyorhinis* indicates a potential mild decrease of cell respiration and substrate oxidation in the mycoplasma contaminated cells, but no significant effect on any of the RC components. Slight decrease of cell respiration might result from a competition in the use of intermediate substrates resulting from proliferating mycoplasmas in the cell cytosol.

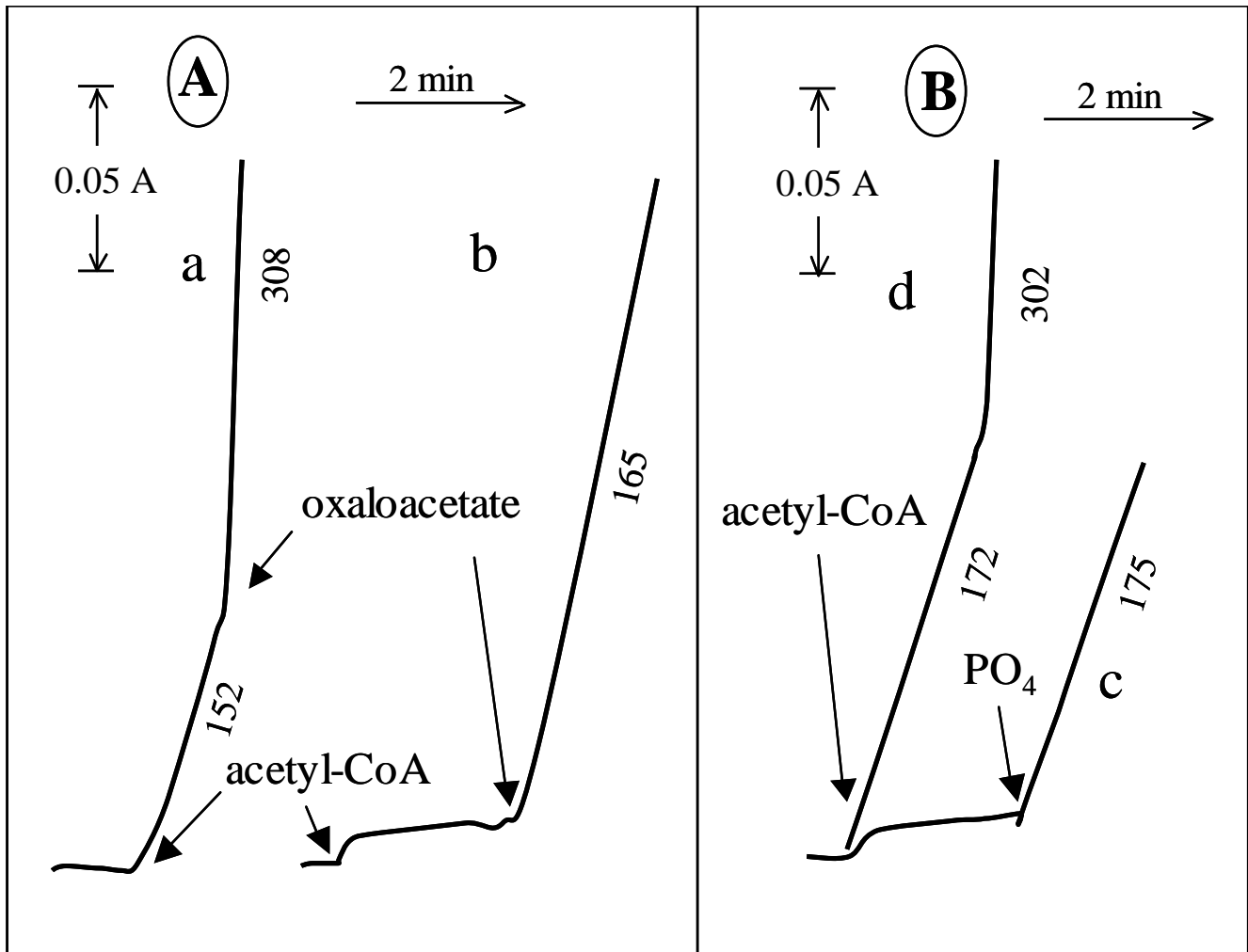


Figure 2
Phosphate acetyltransferase activity of *Mycoplasma hyorhinis* can be confused with citrate synthase activity of cultured skin fibroblasts contaminated by *M. hyorhinis*. **A:** Measurement of the citrate synthase activity before (a) and after (b) treatment showing, before oxaloacetate addition, the rapid reduction of DTNB in the mycoplasma-contaminated fibroblasts as compared to treated cells. The experiment was started with the addition of Triton X100-permeabilized fibroblasts and DTNB followed by the addition of acetylCoA and oxaloacetate. **B:** Measurement of the DTNB reduction in mycoplasma-contaminated cells in the presence (d) or absence (c) of phosphate in the medium. The experiment started with the addition of cells and DTNB, followed by the addition of acetyl-CoA. In b and c, 10 mM phosphate was later added to the cuvette. Numbers along the traces are nmol DTNB reduced/min/mg protein and represent mean values of experiments carried out independently on the 4 different cell lines. Rather large standard variations (between 20 to 30%) were calculated presumably reflecting variable level of cell contamination by *M. hyorhinis* (not shown).

The studied mycoplasma, *M. hyorhinis*, is a fermentative mollicute usually inhabiting the nasal cavity of swine and is one of the most common cell culture contaminants encountered, probably originating from the bovine sera [8]. The mechanisms of ATP-generation in the mollicutes are not fully understood, but among a number of potential energy-yielding mechanisms in mollicutes is the ac-

tate kinase-ATP-generating pathway [20]. In this pathway acetyl-phosphate needs to be produced through the action of phosphate acetyltransferase on acetyl-CoA:

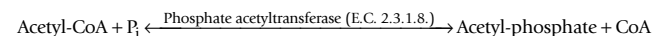


Table 2: Phosphate acetyltransferase activity in different mycoplasma species. Numbers are the mean values of triplicates. *M. fermentans* 1 and 2 represent two different batches. DTNB, dithionitrobenzoic acid.

Species	Phosphate acetyltransferase activity (nmol DTNB reduced/min/mg protein)
<i>M. hyorhinis</i>	1600
<i>M. fermentans</i> 1	114
<i>M. fermentans</i> 2	95
<i>M. orale</i>	n.d.*
<i>M. arginini</i>	n.d.

*n.d., no detectable DTNB reduction after 20 min incubation.

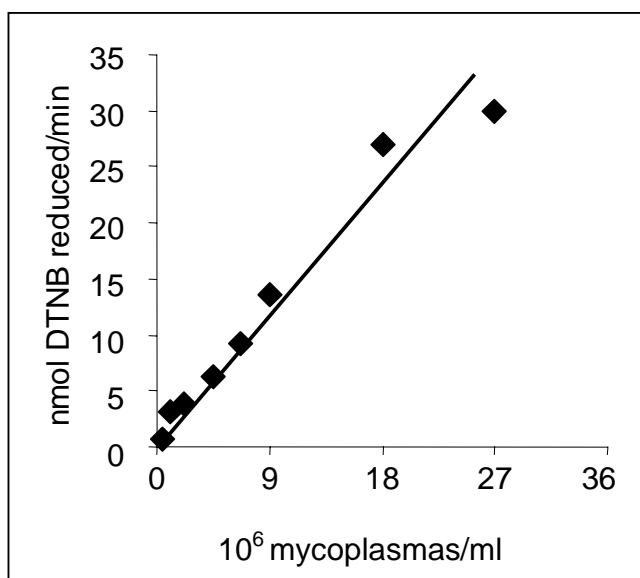
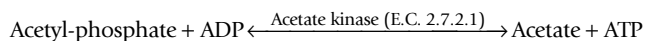


Figure 3
Phosphate acetyltransferase activity in titrated suspensions of *Mycoplasma hyorhinis*. Measurement of DTNB reduction as a function of organisms/ml. Notice that 9×10^6 organisms represents about 30 μ g protein, one color-changing units (CCU) corresponding roughly to 10 to 100 organisms [29].



Although these enzymes have been reported to be commonly found in both fermentative and non-fermentative mollicutes [21], we found phosphate acetyltransferase mostly active in the two fermentative species (*M. hyorhinis* and *M. fermentans*). The enzyme was indeed particularly active in *M. hyorhinis* with two major consequences. On one hand, the activity of this enzyme can be confused with the activity of the citrate synthase, if this latter activity

is not carefully checked to be dependent on oxaloacetate. On the other hand, measurement of the phosphate acetyltransferase activity represents a quite sensitive, convenient, and costless tool to detect the presence of *M. hyorhinis* in biological samples, particularly in human cultured cells where it represents a common contaminant. Its routine measurement along with citrate synthase assay may prove to be a valuable supplement to the diagnostic arsenal of mycoplasma detection.

Conclusion

The above data indicate that *M. hyorhinis* results in a potential mild decrease of cell respiration and substrate oxidation in the mycoplasma contaminated cells, but does not have any significant effect on the RC components. With the noticeable exception of citrate synthase, our study indicates that contamination by *M. hyorhinis* should not influence routine diagnostic procedures used to detect mitochondrial defects in cultured skin fibroblasts.

Methods

Mycoplasma detection and species identification

As a consequence of reduced cell proliferation and increased cell mortality, mycoplasma contamination was suspected in four human fibroblast cell lines and detection initially performed with the fluorescent Hoechst 33258 stain using the Mycoplasma stain kit (Sigma-Aldrich Co. Ltd, Irvine, UK) according to the manufacturer's description. The identification of *M. hyorhinis* as the contaminating species was carried out using molecular typing by PCR-based methods [22,23].

Cell culture

Fibroblast cultures were established from skin biopsies obtained from 3-year to 77-year old individuals for diagnostic purpose but no evidence of RC dysfunction. Cells were cultured in RPMI 1640 (Life technologies SARL, Cergy Pontoise, France) supplemented with glutamax (446 mg/l), 10% foetal calf serum, 100 μ g/ml streptomycin, 100 IU/ml penicillin, 200 μ M uridine and 2.5 mM

sodium pyruvate, at 37°C under standard conditions [24]. When indicated, cells were treated with 20 µg/ml Ciprofloxacin (Bayer, Leverkusen, Germany) for 14 days and culture medium changed every 3–4 day. Ciprofloxacin treatment is considered as a safe and effective method for elimination of cell culture mycoplasmas [25].

Cell respiration and enzyme activities

Polarographic measurements were performed on fresh cells before and after 1 week of the antibiotic treatment. Cell pellets frozen on the same occasion were thawed and used for spectrophotometric measurements, which were performed blindly. Intact fibroblast respiration and mitochondrial substrate oxidation with malate and glutamate and with succinate (Figure 1) were polarographically studied in cell suspensions of digitonin-permeabilized fibroblasts as previously described [26]. The activity of the RC complexes, NADH-ubiquinone reductase (NQR, complex I), succinate-cytochrome *c* reductase (SCCR, complex II-III), glycerol-3-phosphate cytochrome *c* reductase, (GPCCR, glycerol-3-Phosphate dehydrogenase + complex III), decylubiquinol-cytochrome *c* reductase (QCCR, complex III), cytochrome *c* oxidase (COX, complex IV), mitochondrial ATP synthetase (ATPase, complex V) were spectrophotometrically measured on freeze-thaw permeabilized fibroblasts in cell suspension as previously described [26,27]. The NQR, and ATPase activity were measured in 1 ml of 10 mM Tris-HCl buffer (pH 8.0) containing 0.8 mM NADH, 1 mM KCN, 50 µM decylubiquinone for NQR assay, subsequently added with 3 µM rotenone, 5 mM MgCl₂, 10 mM KCl, 2 mM PEP, 0.5 mM ATP, 4 IU lactic dehydrogenase and pyruvate kinase for ATPase assay. Cytochrome *c* reductase activities (SCCR, GCCR, QCCR) were measured in 1 ml of 10 mM KH₂PO₄ (pH 7.8), EDTA 2 mM in the presence of 1 mM KCN, 3 µM rotenone and 0.2 mM ATP. Succinate (10 mM), glycerol 3-phosphate (20 mM), decylubiquinol (50 µM) were used as substrates for determining SCCR, GCCR and QCCR, respectively. COX activity was measured in 1 ml of 10 mM KH₂PO₄ (pH 6.5) in the presence of 2.5 mM lauryl-maltoside, and 10 µM reduced cytochrome *c*. Citrate synthase was spectrophotometrically measured at 412–600 nm in the presence of 0.1% Triton X-100 by following the appearance of the free SH-group of the released CoA-SH upon the addition of 10 mM oxaloacetate to a cell suspension to which 100 µM acetyl-CoA and 2 mM DTNB (Dithionitrobenzoic acid; Ellman's reagent) have been added [28]. In order to discriminate between the phosphate-independent acetyl-CoA acetyltransferase and the phosphate-dependant phosphate acetyltransferase, the analysis was performed either in 10 mM KH₂PO₄ or in 10 mM MOPS (3-N-morpholino-propane-sulfonic acid) (pH 7.8). All measurements were carried out at 37°C and assay media supplemented with 1 mg/ml bovine serum albumin. All chemicals were analytical reagent grade from

Sigma-Aldrich Chimie (Saint Quentin Fallavier; France). The protein content was measured using the Bradford method.

Statistical analyses

Student's T-test was performed using the Statview 5.0 software (SAS Institute Inc. USA).

Authors' contributions

ND carried out most of the polarographic and spectrophotometric assay of the RC; NK took care of the cell cultures; JJB and DC worked on the enzyme assays carried out on mycoplasma strains which were grown and provided by CB; PR conceived of the study, wrote the paper; AR and AM participated in its design and coordination. All authors read and approved the final manuscript.

Acknowledgements

This project was supported by Grants from the Wenner-Gren Foundations, the Swedish Association of Neurologically Disabled, the Swedish Medical Association and the Association Française contre l'Ataxie de Frie-dreich (AFAF)

References

1. Razin S, Yoge V and Naot Y: **Molecular biology and pathogenicity of mycoplasmas.** *Microbiol Mol Biol Rev* 1998, **62**:1094-1156.
2. Waites KB and Taylor-Robinson D: **Mycoplasma and Ureaplasma.** *Manual of clinical microbiology* 7th edition. Edited by: Murray P B. Washington, D.C., ASM Press; 1999:782-794.
3. Blanchard A., and C. M. Bébéar: **Mycoplasmas of humans.** *Molecular biology and pathogenicity of mycoplasmas* Edited by: S Razin and R Herrmann. London, Kluwer Academic/Plenum Publishers; 2002:45-71.
4. Blanchard A and Montagnier L: **AIDS-associated mycoplasmas.** *Annu Rev Microbiol* 1994, **48**:687-712.
5. Gilroy CB, Keat A and Taylor-Robinson D: **The prevalence of Mycoplasma fermentans in patients with inflammatory arthritides.** *Rheumatology (Oxford)* 2001, **40**:1355-1358.
6. Razin S: **Peculiar properties of mycoplasmas: the smallest self-replicating prokaryotes.** *FEMS Microbiol Lett* 1992, **79**:423-431.
7. Hay RJ, Macy ML and Chen TR: **Mycoplasma infection of cultured cells.** *Nature* 1989, **339**:487-488.
8. Drexler HG and Uphoff CC: **Contamination of cell culture, mycoplasma.** *Encyclopedia of cell technology Volume 1.* Edited by: Spier R E. New York, John Wiley & Sons, Inc.; 2000:609-627.
9. Avron A and Gallily R: **Mycoplasma stimulates the production of oxidative radicals by murine peritoneal macrophages.** *J Leukoc Biol* 1995, **57**:264-268.
10. Sasaki T, Shintani M, Yamada K, Okumura H and Kihara K: **Behavior of Mycoplasma hominis in a human diploid cell culture system.** *Microbiol Immunol* 1981, **25**:537-543.
11. Sokolova IA, Vaughan AT and Khodarev NN: **Mycoplasma infection can sensitize host cells to apoptosis through contribution of apoptotic-like endonuclease(s).** *Immunol Cell Biol* 1998, **76**:526-534.
12. Tsai S, Wear DJ, Shih JW and Lo SC: **Mycoplasmas and oncogenesis: persistent infection and multistage malignant transformation.** *Proc Natl Acad Sci U S A* 1995, **92**:10197-10201.
13. Choi JW, Haigh WG and Lee SP: **Caveat: mycoplasma arginine deiminase masquerading as nitric oxide synthase in cell cultures.** *Biochim Biophys Acta* 1998, **1404**:314-320.
14. Gabridge MG: **Metabolic consequences of Mycoplasma pneumoniae infection.** *Isr J Med Sci* 1987, **23**:574-579.
15. Astrom E, Friman G and Pilstrom L: **Effects of viral and mycoplasma infections on ultrastructure and enzyme activities in human skeletal muscle.** *Acta Pathol Microbiol Scand [A]* 1976, **84**:113-122.

16. Doersen CJ and Stanbridge EJ: **Effects of mycoplasma contamination on phenotypic expression of mitochondrial mutants in human cells.** *Mol Cell Biol* 1981, **1**:321-329.
17. Chretien D, Gallego J, Barrientos A, Casademont J, Cardellach F, Munnich A, Rotig A and Rustin P: **Biochemical parameters for the diagnosis of mitochondrial respiratory chain deficiency in humans, and their lack of age-related changes.** *Biochem J* 1998, **329**:249-254.
18. Rustin P, Chretien D, Bourgeron T, Wucher A, Saudubray JM, Rotig A and Munnich A: **Assessment of the mitochondrial respiratory chain.** *Lancet* 1991, **338**:60.
19. Pollack JD, Williams MV and McElhane RN: **The comparative metabolism of the mollicutes (Mycoplasmas): the utility for taxonomic classification and the relationship of putative gene annotation and phylogeny to enzymatic function in the smallest free-living cells.** *Crit Rev Microbiol* 1997, **23**:269-354.
20. Kahane I, Razin S and Muhlrad A: **Possible role of acetate kinase in ATP generation in Mycoplasma hominis and Mycoplasma laidlawii.** *FEMS Microbiol Lett* 1978, **3**:143-145.
21. Muhlrad A, Peleg I, Robertson JA, Robinson IM and Kahane I: **Acetate kinase activity in mycoplasmas.** *J Bacteriol* 1981, **147**:271-273.
22. Teyssou R, Poutiers F, Saillard C, Grau O, Laigret F, Bove JM and Bebear C: **Detection of mollicute contamination in cell cultures by 16S rDNA amplification.** *Mol Cell Probes* 1993, **7**:209-216.
23. Dussurget O., A. Henry, B. Lemercier, and D. Roulland-Dussoix: **Polymerase chain reaction-based diagnosis of mollicute infection of commercial animal sera.** *J. Microbiol. Methods* 1994, **20**:125-135.
24. Bourgeron T, Chretien D, Amati P, Rotig A, Munnich A and Rustin P: **Expression of respiratory chain deficiencies in human cultured cells.** *Neuromuscul Disord* 1993, **3**:605-608.
25. Schmitt K, Daubener W, Bitter-Suermann D and Hadding U: **A safe and efficient method for elimination of cell culture mycoplasmas using ciprofloxacin.** *J Immunol Methods* 1988, **109**:17-25.
26. Rustin P, Chretien D, Bourgeron T, Gerard B, Rotig A, Saudubray JM and Munnich A: **Biochemical and molecular investigations in respiratory chain deficiencies.** *Clin Chim Acta* 1994, **228**:35-51.
27. Chretien D, Benit P, Chol M, Lebon S, Rotig A, Munnich A and Rustin P: **Assay of mitochondrial respiratory chain complex I in human lymphocytes and cultured skin fibroblasts.** *Biochem Biophys Res Commun* 2003, **301**:222-224.
28. Srere PA: **Citrate synthase.** *Meth Enzymol* 1969, **13**:3-11.
29. Bernet C, Garret M, de Barbeyrac B, Bebear C and Bonnet J: **Detection of Mycoplasma pneumoniae by using the polymerase chain reaction.** *J Clin Microbiol* 1989, **27**:2492-2496.

Publish with **BioMed Central** and every scientist can read your work free of charge

"BioMed Central will be the most significant development for disseminating the results of biomedical research in our lifetime."

Sir Paul Nurse, Cancer Research UK

Your research papers will be:

- available free of charge to the entire biomedical community
- peer reviewed and published immediately upon acceptance
- cited in PubMed and archived on PubMed Central
- yours — you keep the copyright

Submit your manuscript here:
http://www.biomedcentral.com/info/publishing_adv.asp

