



HAL
open science

A computer decision aid for medical prevention: a pilot qualitative study of the Personalized Estimate of Risks (EsPeR) system.

Isabelle Colombet, Thierry Dart, Laurence Leneveut, Sylvain Zunino, Joël Ménard, Gilles Chatellier, Group Esper

► **To cite this version:**

Isabelle Colombet, Thierry Dart, Laurence Leneveut, Sylvain Zunino, Joël Ménard, et al.. A computer decision aid for medical prevention: a pilot qualitative study of the Personalized Estimate of Risks (EsPeR) system.. BMC Medical Informatics and Decision Making, 2003, 3, pp.13. 10.1186/1472-6947-3-13 . inserm-00113694

HAL Id: inserm-00113694

<https://inserm.hal.science/inserm-00113694>

Submitted on 15 Nov 2006

HAL is a multi-disciplinary open access archive for the deposit and dissemination of scientific research documents, whether they are published or not. The documents may come from teaching and research institutions in France or abroad, or from public or private research centers.

L'archive ouverte pluridisciplinaire **HAL**, est destinée au dépôt et à la diffusion de documents scientifiques de niveau recherche, publiés ou non, émanant des établissements d'enseignement et de recherche français ou étrangers, des laboratoires publics ou privés.

Research article

Open Access

A computer decision aid for medical prevention: a pilot qualitative study of the Personalized Estimate of Risks (EsPeR) system

Isabelle Colombet*¹, Thierry Dart¹, Laurence Leneveut¹, Sylvain Zunino¹, Joël Ménard¹, Gilles Chatellier¹ and for the EsPeR Group^{1,2,3}

Address: ¹SPIM, Broussais Hotel Dieu University, ERM 202, INSERM, Paris, France, ²LERTIM, Faculté de Médecine Université de la Méditerranée, Marseille, France and ³SC8-INSERM, Le Vésinet, France

Email: Isabelle Colombet* - isabelle.colombet@spim.jussieu.fr; Thierry Dart - thierry.dart@spim.jussieu.fr; Laurence Leneveut - laurence.leneveut@wanadoo.fr; Sylvain Zunino - sylvain.zunino@spim.jussieu.fr; Joël Ménard - joel.menard@spim.jussieu.fr; Gilles Chatellier - gilles.chatellier@spim.jussieu.fr; for the EsPeR Group -

* Corresponding author

Published: 27 November 2003

Received: 02 July 2003

BMC Medical Informatics and Decision Making 2003, **3**:13

Accepted: 27 November 2003

This article is available from: <http://www.biomedcentral.com/1472-6947/3/13>

© 2003 Colombet et al; licensee BioMed Central Ltd. This is an Open Access article: verbatim copying and redistribution of this article are permitted in all media for any purpose, provided this notice is preserved along with the article's original URL.

Abstract

Background: Many preventable diseases such as ischemic heart diseases and breast cancer prevail at a large scale in the general population. Computerized decision support systems are one of the solutions for improving the quality of prevention strategies.

Methods: The system called *EsPeR* (Personalised Estimate of Risks) combines calculation of several risks with computerisation of guidelines (cardiovascular prevention, screening for breast cancer, colorectal cancer, uterine cervix cancer, and prostate cancer, diagnosis of depression and suicide risk). We present a qualitative evaluation of its ergonomics, as well as its understanding and acceptance by a group of general practitioners. We organised four focus groups each including 6–11 general practitioners. Physicians worked on several structured clinical scenarios with the help of *EsPeR*, and three senior investigators led structured discussion sessions.

Results: The initial sessions identified several ergonomic flaws of the system that were easily corrected. Both clinical scenarios and discussion sessions identified several problems related to the insufficient comprehension (expression of risks, definition of familial history of disease), and difficulty for the physicians to accept some of the recommendations.

Conclusion: Educational, socio-professional and organisational components (*i.e.* time constraints for training and use of the *EsPeR* system during consultation) as well as acceptance of evidence-based decision-making should be taken into account before launching computerised decision support systems, or their application in randomised trials.

Background

In France, a considerable number of deaths are due to preventable diseases. Ischemic heart diseases and cerebrovascular diseases still account for more than 80,000

premature deaths and breast cancer, more than 10,000 deaths. The control of the main cardiovascular risk factors, such as hypertension, remains poor, both because of lack of awareness and insufficient blood pressure control [1].

The objectives of breast cancer screening (mammography every 2 years in women aged between 50 and 69 years recommended in French guidelines) are not completely attained either [2].

In France, the promotion of prevention strategies in the ambulatory setting remains a national challenge. Several initiatives have been undertaken by Public Health authorities and by Health Insurance National Office, to prompt general practitioners to modify their prevention practices and improve their adherence to national guidelines. The development of the *EsPeR* system (*Personalised Estimate of Risks*) is one of these actions. It relies on three hypotheses:

1. for a given individual, an accurate estimation of his (her) health risks allows a more pertinent choice of prevention interventions
2. presentation of a patient-customized clinical guideline, will promote its implementation.
3. the combination of risk estimations and patient-specific guidelines embedded in a computerised decision aid can promote physician application of guideline recommendations during consultations and stimulate the communication with the patient.

The objective of this paper is to describe *EsPeR*, a computerised decision support system designed to help prevention practices by use of risk estimates and guidelines and to present a pilot qualitative evaluation of its ergonomics, understanding and acceptance by general practitioners.

Methods

Design of *EsPeR*

The *EsPeR* system is designed for health professionals and it is freely accessible on the Internet, after a simple identification process. An interactive decision support system allows an estimation of risks and a presentation of clinical guidelines. A non-interactive part describes the scientific rationale and background of the system (the documentation part) and provides its sources of medical and epidemiological knowledge (the library part). The following functional description focuses on the decision support system.

Functional description

The decision support system on the *EsPeR* website includes four primary functions:

1. Presentation of the 10 highest risks of avoidable causes of death according to demographic characteristics (age, sex and region of residence).

2. Estimation of specific risks, using published risk prediction models.

3. Individualized presentation of French guidelines on cardiovascular risk management and cancer screening

4. Printable summary of prevention messages for physicians and patients.

Highest risks of death

For a specific patient, the user is asked to enter the system via a screen that presents the 10 highest risks of avoidable causes of death according to demographic characteristics (age, sex and region of residence) (see figure 1). The total 10-year mortality risk is displayed along with the absolute risk and the relative part of risk for each cause. These probabilities have been computed from 1) the French national statistics on the causes of deaths (along with available explicative variables (age, sex and region of residence) and 2) the French population data given by 1990 national census and intermediate estimates by INSEE (the French national Institute of Statistics and Economics). The probability of death from one cause, at a given age is estimated thanks to the method used by INSEE, based on a the use of fictitious cohort, which allows to estimate prospective probabilities from the transformation of transversal observational data [3]. The aim of this part is to suggest a hierarchy of preventable risks that should be adjusted according to the patient specific risk factors (*e.g.* consumption of tobacco and alcohol, blood pressure level, etc.).

Specific risks and individualized guidelines

After this first screen the physician can choose the specific risks he/she wants to further estimate and consider for prevention in his/her patient (cardiovascular risk, alcohol abuse screening, breast cancer, colorectal cancer, uterine cervix and prostate cancer screening, depression and suicide risk). A data input form is dynamically created with relevant clinical and biological items, once the physician has selected the risks (Figure 2). For breast cancer and cardiovascular disease, the form is integrated with a module which allows to create a family tree, enter disease history for each person in the pedigree and estimate familial risk of the patient [4] (Figure 3). The validation of the form provides a risk estimate for each selected risk, and a presentation of guidelines.

The method of implementation of guidelines has been previously described [5]. It relies on a generic guideline representation model derived from the GLIF 2 (Guideline Interchange Format) model [6], and the use of XML as a language of representation for any specific guideline, according to a specific DTD (document type definition) of

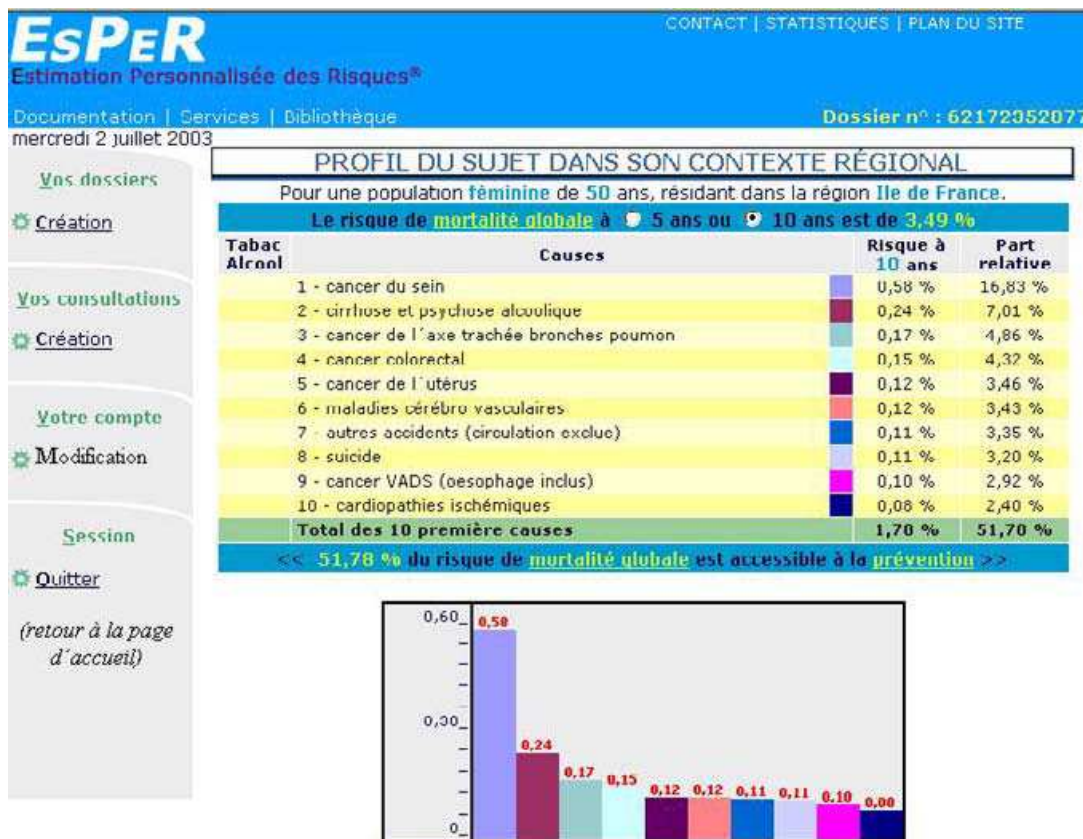


Figure 1
Presentation of the ten first causes of mortality in a women aged 55 years, in the EsPeR system

this model. An inference engine implements the guideline model and executes any specific guideline represented in XML.

All original guidelines have been analysed to specify a decision algorithm, represented in XML language, and a list of elementary messages (*e.i.* extracts of guideline for a given patient profile). Two physicians experienced in medical informatics performed these analysis and specifications. For a given patient, the presentation of guideline consists in 1) the list of variables (*i.e.* the patient's characteristics) used in the decision algorithm, and 2) the successive elementary recommendations related to his(her) characteristics.

Knowledge base

All knowledge used in the system has been selected on the basis of extensive validation (according to evidence-based

medicine methodology). Cardiovascular risks and breast cancer risk are computed thanks to published risk prediction models [7,8]. We considered the Framingham models as sufficiently validated for cardiovascular risk stratification in various cohorts, including French ones [9-11]. Since the Gail model for breast cancer has never been tested on any French data, we chose to only present an estimate of relative risk. Provided guidelines have been selected from those published by the French National Agency for Health Evaluation (ANAES) for:

- Diagnosis and management of hypertension, hyperlipidemia, and type 2 diabetes
- Screening for breast cancer, colorectal cancer, cervical cancer, and prostate cancer
- Diagnosis of depression and suicide risk

EsPeR
Estimation Personnalisée des Risques®

CONTACT | STATISTIQUES | PLAN DU SITE

Documentation | Services | Bibliothèque

mardi 7 octobre 2003

Dossier n° : 971639407

NOUVELLE CONSULTATION

Sur quels risques souhaitez vous approfondir la consultation :

Tabac Alcool Dépression Cardio-vasculaire

Cancer du sein Cancer du côlon Cancer du col utérin

Afficher le questionnaire >>

Antécédents familiaux

Antécédents familiaux Risque familial

Cancer du sein non

Cancer du sein

Catégorie d'âge	>=50
Age des premières règles	>=14
Age à la première naissance vivante	<20
Antécédent personnel de cancer du sein	<input checked="" type="radio"/> non <input type="radio"/> oui
Nombre de biopsies du sein	0

Validez Effacez tout

Figure 2
Data form after selection of breast cancer risk

- Diagnosis and management of alcohol abuse.

Printable summary

Finally, a printable summary of all risk estimates and guidelines is made accessible for both physician and patient, with words and format adapted to each.

Technical architecture

The *EsPeR* system is based on a 3-tier client-server architecture. The concepts used by the decision support modules (patient data, risks estimates) are implemented in JAVA classes; these classes encapsulate relational databases with SQL queries and generate with the results HTML pages by using Active Server Pages technology.

Qualitative evaluation

Following published recommendations [12], we designed a pilot qualitative study to evaluate the ergonomics,

understanding and acceptance of the interactive decision support system of *EsPeR* by general practitioners. The main objective of this preliminary evaluation in laboratory was to appreciate how general practitioners could use and react to *EsPeR* and to go in depth with them into their reactions and beliefs. A secondary objective of this study was to prepare a larger qualitative study to be organised in ambulatory practice, with use of *EsPeR* during consultation.

Study design

The study was performed in two sessions, each consisting in two focus groups. The first session was organised in January 2002 with the version 1 of the system and the second one in October 2002, with the version 2, improved according to several results of the first session. The differences between the first version and the second one concern the number of provided guidelines and the global

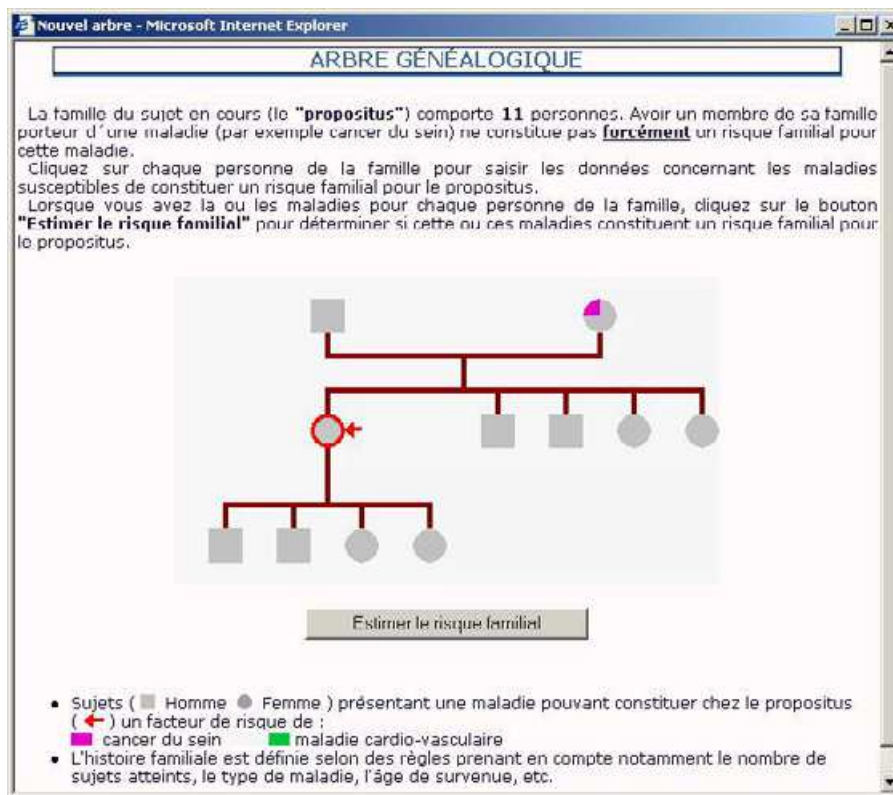


Figure 3
Presentation of the pedigree in the familial history module

ergonomics and navigation within the site. All focus groups were animated by three investigators (GC, IC and TD for the first and second ones, GC, IC and LL for the third and fourth ones)

Each focus group was divided into four phases: 1) a structured discussion to evaluate skills and culture on prevention (at the beginning of the session) 2) a presentation of the project and short training to *EsPeR* (1 hour), 3) an individual work on 6 to 12 structured clinical scenarios with or without *EsPeR* (2 to 4 hours) and 4) a structured discussion to draw a consensus synthesis on the evaluation of *EsPeR* (at the end of the session) (1 to 2 hours).

The same investigator (GC) conducted discussion during phases 1 and 4 in all groups, according to outlines presented in Table 1, while the others (IC and TD for the 1st session in January and IC and LL for the 2nd session in

October) took notes of the discussion. The later were asked to transcribe original comments of physicians as faithfully as possible, rather than their own interpretations. Both topics of discussion (prevention and synthesis of evaluation) were also addressed thanks to a structured individual questionnaire filled out by physicians before the corresponding discussion.

During the second phase, the three investigators observed the physicians' behaviour in using the system. They collected physicians' remarks, difficulties and suggestions, along with their personal comments or opinion on these reactions. Structured clinical scenarios were formulated according to *a priori* hypotheses on physician's practices or beliefs, which could be in contradiction with the scientific content of *EsPeR*. For example, as current French guideline recommend systematic mammography screening of breast cancers in women aged 50 to 70 years, we depicted

Table 1: Outlines for structured discussion in focus groups

Discussion on prevention	Consensus synthesis
<ul style="list-style-type: none"> • Physician point of view <ul style="list-style-type: none"> What is prevention? Knowledge on risk (vocabulary, interpretation) Knowledge on guidelines Current use of guidelines Part of prevention in their practice • Patient point of view (as perceived by physicians) <ul style="list-style-type: none"> Expectations for prevention Attitudes and adherence to the process of risk control • Expectations of physicians for computer decision support systems: <ul style="list-style-type: none"> For medical decision making To be usable while facing the patient For communication with patients For continuous medical education 	<ul style="list-style-type: none"> • Ergonomics and adoption of the computer decision support system (by main functionalities) • Patient medical record (PMR) <ul style="list-style-type: none"> Unique/multiple forms Archives Interoperability with personal practice PMR • Presentation of risks <ul style="list-style-type: none"> Were they puzzled by risk estimates? Perceived utility of risk estimates for the care of individual patients • Presentation of guidelines <ul style="list-style-type: none"> Perceived appropriateness of advices in GPs field practice • Printable synthesis for patient <ul style="list-style-type: none"> Usability for communication with patients

a scenario of a 43 aged women with average personal risk of breast cancer according to the Gail model (particularly, with one history of breast cancer in her mother, diagnosed at the age of 70). Physicians were asked to answer to each scenario on a structured form, about what would be their estimates of health risks and prevention strategies, whether concordant or not with *EsPeR*, used as decision aid.

Recruitment of general practitioners

Physicians were recruited differently for both sessions. For the January session, we requested volunteers in two different professional groups by the intermediate of the executive manager of each group (the National French Federation of Mutuality, which manages non for profit health centres with full-time of part time salaried GPs, and the National College of Teaching GPs). For the October session, we recruited volunteers by a mail shot to physicians who practice in two administrative departments of France (n = 437 in Indre et Loire, n = 135 in Seine et Marne) and who already participated in a prevention program organized by the CANAM (Health Insurance National Office for non salaried workers). Volunteers were asked to have minimal computer and Internet skills. In each focus group, the participants were not supposed to know each other and had no working contacts with the investigators before the sessions. All GPs were paid for their participation in the study.

Data collection and analysis

Demographic and professional characteristics of participants were collected by a questionnaire mailed to each participant before the session.

Evaluation data were collected:

1. During the discussion phases: from discussion notes collected by two investigators
2. During individual work on clinical scenarios: from standardized structured answer form filled out by each physician for all scenarios, with open commentaries and observation notes from the three investigators
3. Using two structured questionnaires evaluating the degree of knowledge (beginning of the session) and the satisfaction of physicians with *EsPeR* (end of the session).

Observations and discussion notes collected by the different investigators were all pooled together, with indication of the origin of each item (original comments by physicians or interpretation by investigators). They were summarized by one investigator (IC) and validated by two others (by GC and TD in January then by GC and LL in October). This qualitative verbatim of the focus group was further classified into:

- Ergonomics of the system (navigation, speed, intuitiveness)
- Understanding of contents
- Acceptance of advices (barriers and facilitators to put guidelines into practice).

We also checked the consistency of this verbatim with answers to questionnaires and we tried to infer from this

Table 2: Characteristics of participants (figures are numbers)

	January session		October session	
	Group A (n = 11)	Group B (n = 11)	Group A (n = 8)	Group B (n = 6)
Age, median (IQR)	46 (11)	51 (10)	42.5 (11.5)	51 (10)
Sex (number of males)	8	11	7	6
Practice setting				
Health centre	5	1	0	0
Teaching activity	3	8	0	0
Ambulatory (urban)	-	-	6	4
Ambulatory (semi-rural)	-	-	2	2
Use of computer during consultation	6	10	8	6
Use of an electronic medical record (EMR)	6	10	8	5
Use of EMR during consultation	4	10	7	5
Use of decision support systems for diagnosis	2	4	1	1
Use of decision support systems for prescription	2	9	8	5

verbatim some pragmatic interpretation potentially leading to concrete improvement of the *EsPeR* system.

Finally, we analysed the answers to each individual clinical scenario as concordant or discordant with the answers recommended in *EsPeR*. We expressed this concordance in terms of "acceptance" ("not acceptable": no concordance with the recommendation of *EsPeR* and negative comments from physicians; "intermediate": no concordance but no negative comments or concordance but negative comments; "acceptable": concordance with the recommendation of *EsPeR* and positive comments). We tried to explain this acceptance in the light of the verbatim of the focus group.

Results

Participants characteristics

The four focus groups were performed respectively with a total of 36 participants (11 and 11 in January session, 8 and 6 in October session). Mean age was 48 years, 89% were male and 80% used electronic medical record software. The four groups were different in terms of professional setting and use of informatics (Table 2).

Problems of ergonomics

Several problems of ergonomics were clearly identified with the two first groups in January (both through observation by investigators and reports by physicians). These problems concerned:

- Navigation in the family tree module

- Navigation between data forms and results (risk and guidelines)

- Absence of archive of medical record and absence of an export function to avoid duplicate data entry (in *EsPeR* and in personal EMR software)

Some solutions to these problems were developed for the version 2 and GPs of the October sessions found the ergonomics and navigation correct, easy to use and fast enough (see Table 3). Physicians needed 15 to 20 minutes to work on one clinical scenario with *EsPeR*.

Problems of understanding

The physicians' understanding of risks was highly variable. Several of them were not familiar with a quantitative estimate of risk. They did not know how to apply the absolute risk provided in *EsPeR* and asked for explanations. Few participants asserted being more confident in their own risk estimate. Few GPs did not know clinical practice guidelines. Most had heard about them but did not refer to them, and few both read and used them routinely (Table 3).

Acceptance of EsPeR content

The acceptance of the guideline messages was evaluated from GPs answers to clinical scenarios (adherence or no adherence to the messages), from their reactions observed during individual work and from the comments reported in discussion notes during open group discussion (Table 3). The cardiovascular guidelines were in general better

Table 3: Extracts of discussion notes and written open comments by participating physicians

Discussion notes on prevention	
January 2002:	October 2002:
<p><u>Prevention is:</u> "individual prevention or population prevention?" "to inform the patient" "to educate the patient for health: nutrition, etc." "cancer prevention consists in regular and systematic exam, more specifically according to particular risks of patients" "a lot of time !" "the activity of prevention is guided more by a the reasons of consultations or the circumstances than by any structured prevention plan." <u>Demand of patients:</u> "there is an harmful role of the medias: sometime, patients are informed before we are" "patients would accept messages of prevention if we had more time with them" <u>Guidelines:</u> "there are too many of them" "we lack time to read them" "we can agree with them but not use them" "general practitioners are not involved enough in their development" "guidelines avoid to do bibliography and the ANAES is independent from Health Insurance institutions"</p>	<p><u>Prevention is:</u> "Prevention is included in the time of regular consultation, according to its context" "to use appropriate means to avoid accidents and diseases" "a specific consultation for prevention would be twice longer than regular consultation" " <u>Guidelines:</u> "ANAES guidelines are more acceptable for us when we have the opportunity to work on them in our continuous medical education group" "we trust the ANAES guidelines more than experts opinions" "there are a strong pressure by the media on patients concerning PSA screening"</p>
Written open comments on clinical scenario answer forms	
January 2002:	October 2002:
<p>"the keyboarding is too long in the family history module" "EsPeR does not take into account the treatment of risk factors" "Two myocardial infarctions and one stroke in the family (uncles and aunts) do not constitute a familial risk" "there is no estimated familial risk despite her mother had breast cancer" "I will prescribe a mammography, even though EsPeR tells me it is not recommended." "Don't forget that we care of a patient who does not care about his(her) probability or about the cost of his(her) screening test" "EsPeR helps to be aware of intensity of risks", "EsPeR helps to balance risk of cardiovascular diseases and risk of cancer", "I thought I knew the guidelines... finally: I don't",</p>	<p>"I did not find any answer with EsPeR" "We cannot refuse a mammography screening to a 43 years aged women, even though screening is recommended at 50 years of age." "There is a strong incentive from laboratories to use PSA for systematic prostate cancer screening" * (it is not recommended by guideline in EsPeR) "I am questioned in my idea on the pertinence of screening"</p>
Discussion notes on evaluation synthesis	
January 2002:	October 2002:
<p>"EsPeR is not ready for use in consultation" "This tool is not appropriate for daily practice" "EsPeR is easy to use, but difficult to integrate in one consultation" "EsPeR allow to learn" "Criteria used to define risk are too strict. In practice, we use fuzzy criteria" "We trust our clinical experience to estimate risks" "the statistical truth is not the clinical truth" "I need to adapt guideline to my personal practice" "cognitive interest of the individualisation of guidelines brought at the moment of decision" "I was able to integrate the concepts of risk only when I started working with EsPeR."</p>	<p>"I learned something today...I have practiced prevention for 23 years, only based on my common sense" "The presentation of mortality data provides an interesting tool to communicate with the patient" "We need a framework to interpret risks or some labels; we do not know how to relate cardiovascular risk with mortality risk" "more warnings and more active alerts are needed from the estimations of risks" "highlight individual messages better in guideline messages" "we often overestimate familial risks"</p>

Table 4: Degree of acceptance of guideline messages, possible interpretation and solutions

Examples of clinical scenarios (and corresponding guideline message)	Acceptance of <i>EsPeR</i> advice [#]	Characterization of the problem of acceptance	Possible solution
Tobacco smoking (only the last year consumption is taken into account in <i>EsPeR</i>)	Intermediate	Lack of knowledge (cardiovascular risk returns to baseline after smoking cessation)	More explicit reasoning and detailed explanations
Familial cardiovascular risk of a 60-year old man with 2 brothers who had myocardial infarction at more than 70 years of age... (no familial risk according to the definition used in the guideline)	Not acceptable	Over estimation of familial risk. Knowledge and evidence disagree with common sense and inherited cultural belief	More explanation and information on evidence
Absence of familial risk of breast cancer in a woman whose mother had a breast cancer at 60 and had no other family member having had a cancer	Intermediate	Knowledge and evidence disagree with common sense and inherited cultural belief	More explanation and information on evidence
Breast cancer screening in a 43-year old women at average risk (mammography not recommended as systematic screening, genetic screening only if high familial risk)	Not acceptable	Over-estimation of familial risk. High pressure (anxiety) of patients for screening without knowledge on benefit and risk of screening	More accurate information targeted on both the physician and the patient
Colorectal cancer screening by colonoscopy in a 60-year old man whose father is dead from colorectal cancer at 80 (not recommended in average risk patients except in research programs)	Not acceptable	Over-estimation of familial risk. Over estimation of the benefit/risk of colonoscopy	More explanation and information on evidence
Cervical cancer screening in a 55-year old women (pap smear recommended until 70 years of age)	Acceptable	-	-
Prostate cancer mass screening in men aged more than 50 (screening not recommended)	Intermediate	Poor knowledge of evidence	More information on evidence

[#] Acceptance: "not acceptable"= no concordance with the recommendation of *EsPeR* and negative comments from physicians; "intermediate" = no concordance but no negative comments or concordance but negative comments; "acceptable" = concordance with the recommendation of *EsPeR* and positive comments

accepted than guidelines on cancer screening. Several recommendations given by *EsPeR* concerning cancers screening were perceived as inappropriate because of patients' demands and social or organizational pressures.

Overall, physicians perceived the system as useful. Few participants would have liked to be guided more directly to select the risks that should be considered in priority for prevention for a given patient.

Table 4 presents examples of the acceptance of some recommendations of *EsPeR*, for different clinical situations addressed in scenarios, along with plausible explanations and solutions inferred from discussion notes and from physicians' comments.

Discussion

The present paper describes a computerised system devoted to the prevention of avoidable morbidity, based on risk assessment and valid recommendations. The main objective of *EsPeR* is to put in perspective the different health risks for one individual and to present guideline messages appropriate for this individual. The hierarchy of risks currently relies on the presentation of French mortality data and is therefore poorly "individualized", taking into account age, sex and region of residence. A more accurate estimate of several risks is possible thanks to specific models such as the Framingham model. However, these models have been demonstrated as being adequately discriminant but poorly calibrated in French population [10,13]. Other models have been recently published thanks to the SCORE project and are recommended by the Third Joint Task Force of European Societies on Cardiovascular prevention [14,15]. We intend to

integrate them in *EsPeR*. We also experienced difficulties in implementing the French guidelines on cardiovascular prevention because of the heterogeneity of recommended tools for risk stratification.

We ran a pilot qualitative study in laboratory, in order to observe physicians' reaction and behaviour while using *EsPeR* and to find with them some explanations. We interpreted the collected verbatim and observations as potential barriers and facilitators for the diffusion of this tool. No focus group session was recorded or videotaped and no social scientist was involved in the study: the groups were animated by three different investigators among whom one was not involved directly in the design of *EsPeR* and supposed to be "neutral". Recruitment was different for both sessions (in January and October) and led to very different groups which interestingly suggested that different kinds of reactions may pertain to different backgrounds (socio-professional environment, use of informatics, etc.).

Despite these limitations, ergonomics problems were easily identified thanks to the first two focus groups. Corrective measures were taken in the version 2 and led to solve these problems, as verified with the second session of focus groups. The main problems pertained to the content of *EsPeR* and presentation of knowledge. Analysis of these results led to several actions. The first one consisted in giving a feedback to the ANAES (the French national agency in charge of the development of guidelines) on difficulties encountered while computerizing guidelines. This resulted in a partnership between our laboratory and the ANAES to set up a guideline development framework designed for the guideline authors, in order for them to write directly and unequivocally "computerizable" guidelines. Our results also suggest that improving the quality of preventive strategies in the primary care setting requires considering the multiple competing demands faced by patients and physicians during each consultation. The promotion of the *EsPeR* system, designed for assisting physicians in setting rational priorities in prevention strategies, should therefore include both an educational intervention (*i.e.* teaching evidence and the concept of risk for increasing physician's confidence in recommendations) and an organisational intervention (*i.e.* increase of the consultation duration to allow the complete use of the computerised decision support system, or promote the delegation of certain tasks to nurse practitioners).

The key assumption made by people developing decision aids is that providing decision support (recommendations, alerts, reminders, calculations) as well as useful clinical information at the point of care can reduce unwarranted variations in care and improve patients' health. It is generally acknowledged that computerised reminders

and alerts improve the practice of simple preventive measures (screening, vaccinations...) [16]. However, more complex decision support systems such as computerised guidelines [17], or calculation of cardiovascular risk [18] did not improved quality of care in several recent well designed randomised trials. These findings can have several explanations: either the system does not work, or it is not used because it does not fit the physicians' needs or else it is in conflict with physicians beliefs and constraints. In keeping with this idea, some authors encourage evaluating computerised decision support systems not only with randomised trials [19]. In some examples, a qualitative study helps to explain the negative of poor results of a randomised controlled trial [17,20]. We therefore plan a qualitative on-field evaluation of the system to assess its usability and its acceptance by general practitioners on larger scale, in two different regions of France, before considering evaluating its impact in a randomised trial.

Conclusion

We presented an original computerized decision support system for medical prevention based on concepts like risks and complex knowledge found in clinical practice guidelines. The pilot qualitative evaluation of this system reinforces the need of training on its content, prior to its on-field evaluation. The main perspective of this work is the design of a larger qualitative study to evaluate the utilization and barriers to acceptance of the *EsPeR* system in the day to day practice. Potential important implication of this project could be the use of *EsPeR* as a structuring tool for prevention strategies in ambulatory medicine.

Competing interests

None declared.

Acknowledgements

This project has been developed thanks to a grant by the Caisse Nationale d'Assurance Maladie des Travailleurs Indépendants (CANAM). We thank Catherine Wajs for her help in revising the manuscript and all other members of the *EsPeR* Group for their contribution to the project: Pr P Degoulet, Pr M Fieschi, Dr J Gouvernet, Dr R Giorgi, Dr JC Dufour, E Jougla, E Michel, Y Xu.

Authors' contributions

IC, GC, and JM wrote the manuscript. IC and GC designed and organized the study. IC, TD, LL and GC animated the focus groups. SZ ensured software development and maintenance for the *EsPeR* project and followed the focus group for technical support. The *EsPeR* Group collaborated to the design of the software

References

1. Lang T, de Gaudemaris R, Chatellier G, Hamici L, Diene E: **Prevalence and therapeutic control of hypertension in 30,000 subjects in the workplace.** *Hypertension* 2001, **38**:449-454.
2. Ganry O, Peng J, Dubreuil A: **[Evaluation of mass screening for breast cancer in the Somme district (France) between 1990 and 1996].** *Rev Epidemiol Sante Publique* 1999, **47**:335-341.

3. Giorgi R, Gouvernet J, Jouglu E, Chatellier G, Degoulet P, Fieschi M: **The use of the personalized estimate of death probabilities for medical decision making.** *Comput Biomed Res* 2000, **33**:75-83.
4. Colombet I, Xu Y, Jaulent MC, Desages D, Degoulet P, Chatellier G: **A generic computerized method for estimate of familial risks.** *Proc AMIA Symp* 2002:175-179.
5. Dart T, Xu Y, Chatellier G, Degoulet P: **Computerization of guidelines: towards a "guideline markup language".** *Medinfo* 2001, **10**:186-190.
6. Ohno-Machado L, Gennari JH, Murphy SN, Jain NL, Tu SW, Oliver DE, Pattison-Gordon E, Greenes RA, Shortliffe EH, Barnett GO: **The guideline interchange format: a model for representing guidelines.** *J Am Med Inform Assoc* 1998, **5**:357-372.
7. Anderson KM, Wilson PW, Odell PM, Kannel WB: **An updated coronary risk profile. A statement for health professionals.** *Circulation* 1991, **83**:356-362.
8. Gail MH, Brinton LA, Byar DP, Corle DK, Green SB, Schairer C, Mulvihill JJ: **Projecting individualized probabilities of developing breast cancer for white females who are being examined annually.** *J Natl Cancer Inst* 1989, **81**:1879-1886.
9. Dréau H, Colombet I, Degoulet P, Chatellier G: **Identification of patients at high cardiovascular risk: a critical appraisal of applicability of statistical risk prediction models.** *Meth Inform Med* 2001, **40**:6-11.
10. Bastuji-Garin S, Deverly A, Moyses D, Castaigne A, Mancía G, de Leeuw PW, Ruilope LM, Rosenthal T, Chatellier G: **The Framingham prediction rule is not valid in a European population of treated hypertensive patients.** *J Hypertens* 2002, **20**:1973-1980.
11. D'Agostino R. B., Sr., Grundy S, Sullivan LM, Wilson P: **Validation of the Framingham coronary heart disease prediction scores: results of a multiple ethnic groups investigation.** *Jama* 2001, **286**:180-187.
12. Giacomini MK, Cook DJ: **Users' guides to the medical literature: XXIII. Qualitative research in health care A. Are the results of the study valid? Evidence-Based Medicine Working Group.** *JAMA* 2000, **284**:357-362.
13. Laurier D, Nguyen PC, Cazelles B, Segond P: **Estimation of CHD risk in a French working population using a modified Framingham model. The PCV-METRA Group.** *J Clin Epidemiol* 1994, **47**:1353-1364.
14. Conroy RM, Pyorala K, Fitzgerald AP, Sans S, Menotti A, De Backer G, De Bacquer D, Ducimetiere P, Jousilahti P, Keil U, Njolstad I, Oganov RG, Thomsen T, Tunstall-Pedoe H, Tverdal A, Wedel H, Whincup P, Wilhelmsen L, Graham IM: **Estimation of ten-year risk of fatal cardiovascular disease in Europe: the SCORE project.** *Eur Heart J* 2003, **24**:987-1003.
15. De Backer G, Ambrosioni E, Borch-Johnsen K, Brotons C, Cifkova R, Dallongeville J, Ebrahim S, Faergeman O, Graham I, Mancía G, Manger Cats V, Orth-Gomer K, Perk J, Pyorala K, Rodicio JL, Sans S, Sansoy V, Sechtem U, Silber S, Thomsen T, Wood D: **European guidelines on cardiovascular disease prevention in clinical practice. Third Joint Task Force of European and Other Societies on Cardiovascular Disease Prevention in Clinical Practice.** *Eur Heart J* 2003, **24**:1601-1610.
16. Shea S, DuMouchel W, Bahamonde L: **A meta-analysis of 16 randomized controlled trials to evaluate computer-based clinical reminder systems for preventive care in the ambulatory setting [see comments].** *J Am Med Inform Assoc* 1996, **3**:399-409.
17. Eccles M, McColl E, Steen N, Rousseau N, Grimshaw J, Parkin D, Purves I: **Effect of computerised evidence based guidelines on management of asthma and angina in adults in primary care: cluster randomised controlled trial.** *BMJ* 2002, **325**:941.
18. Montgomery AA, Fahey T, Peters TJ, MacIntosh C, Sharp DJ: **Evaluation of computer based clinical decision support system and risk chart for management of hypertension in primary care: randomised controlled trial.** *BMJ* 2000, **320**:686-690.
19. Kaplan B: **Evaluating informatics applications--some alternative approaches: theory, social interactionism, and call for methodological pluralism.** *Int J Med Inf* 2001, **64**:39-56.
20. Rousseau N, McColl E, Newton J, Grimshaw J, Eccles M: **Practice based, longitudinal, qualitative interview study of computerised evidence based guidelines in primary care.** *Bmj* 2003, **326**:314.

Pre-publication history

The pre-publication history for this paper can be accessed here:

<http://www.biomedcentral.com/1472-6947/3/13/prepub>

Publish with **BioMed Central** and every scientist can read your work free of charge

"BioMed Central will be the most significant development for disseminating the results of biomedical research in our lifetime."

Sir Paul Nurse, Cancer Research UK

Your research papers will be:

- available free of charge to the entire biomedical community
- peer reviewed and published immediately upon acceptance
- cited in PubMed and archived on PubMed Central
- yours — you keep the copyright

Submit your manuscript here:
http://www.biomedcentral.com/info/publishing_adv.asp

