

**Table 1 – Number of subjects and deaths**

Sub-cohort	Men		women	
	Number of subjects at baseline	Number of deaths in the period	Number of subjects at baseline	Number of deaths in the period
1968-1974	82 481(1)	5109	88 745	2529
	<i>97 142(2)</i>	<i>5795</i>	<i>101 009</i>	<i>2815</i>
1975-1981	84 374	5051	89 629	2348
	<i>100 638</i>	<i>5339</i>	<i>103 102</i>	<i>2469</i>
1982-1988	93 003	5615	98 230	2285
	<i>110 623</i>	<i>5918</i>	<i>113 366</i>	<i>2428</i>
1990-1996	102 887	5228	108 035	2256
	<i>122 031</i>	<i>5442</i>	<i>125 374</i>	<i>2351</i>

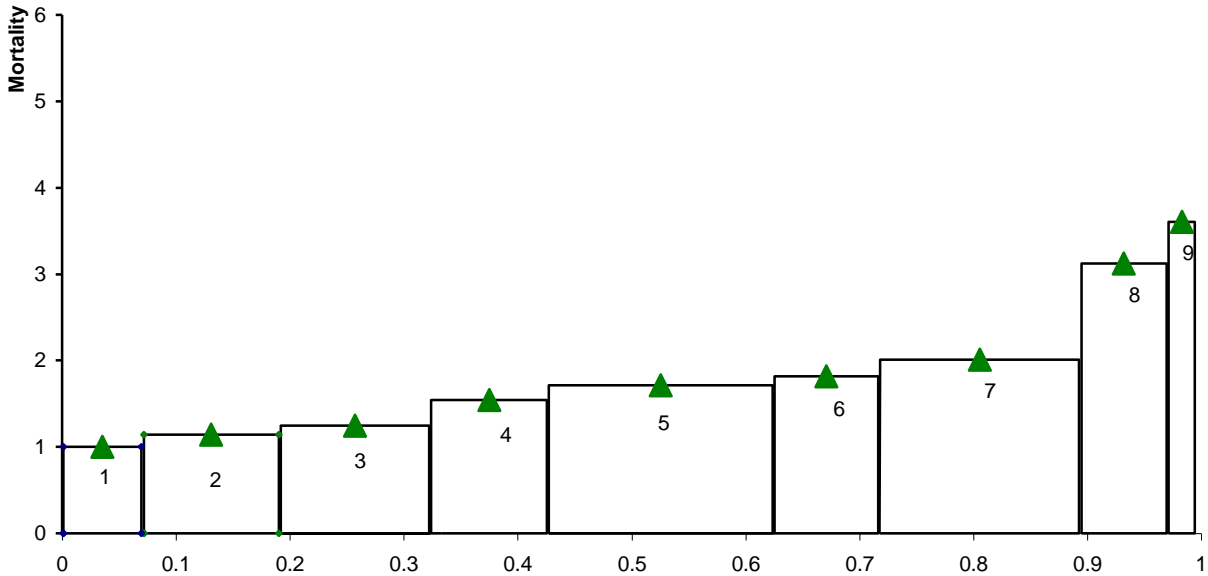
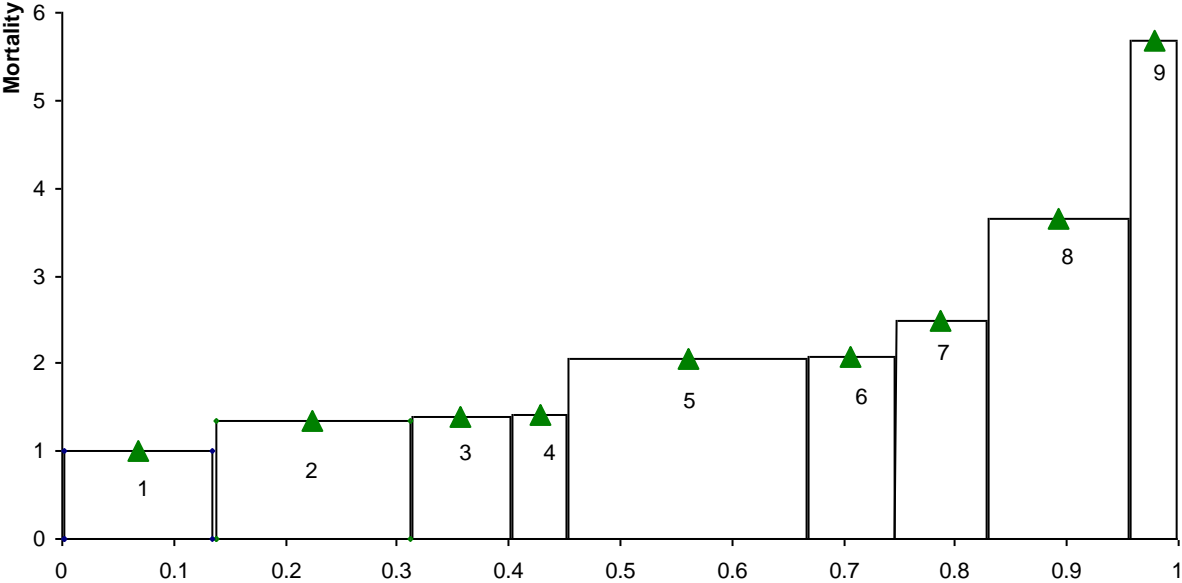
(1) aged 30-64 years at the beginning of the census year, limited to: French born in France.

(2) in italic, numbers for the whole sample of the age group.

**Table 2 – Distribution of the population (in %) according to employment status at the four censuses**

Census	Men				Women			
	Employed	Retired	Job-seeking	Other inactive	Employed	Retired	Job-seeking	Other inactive
1968	88.80	7.61	1.13	2.45	41.02	6.64	0.84	51.51
1975	88.06	8.46	1.08	2.40	45.77	7.02	1.23	45.97
1982	83.77	9.72	2.85	3.67	51.74	6.91	3.77	37.59
1990	78.00	12.36	4.50	4.88	55.78	8.15	6.51	29.56

**Figure 1 – Mortality ratios standardised on age, men, periods 1968-1974 (top) and 1990-1996 (bottom)**

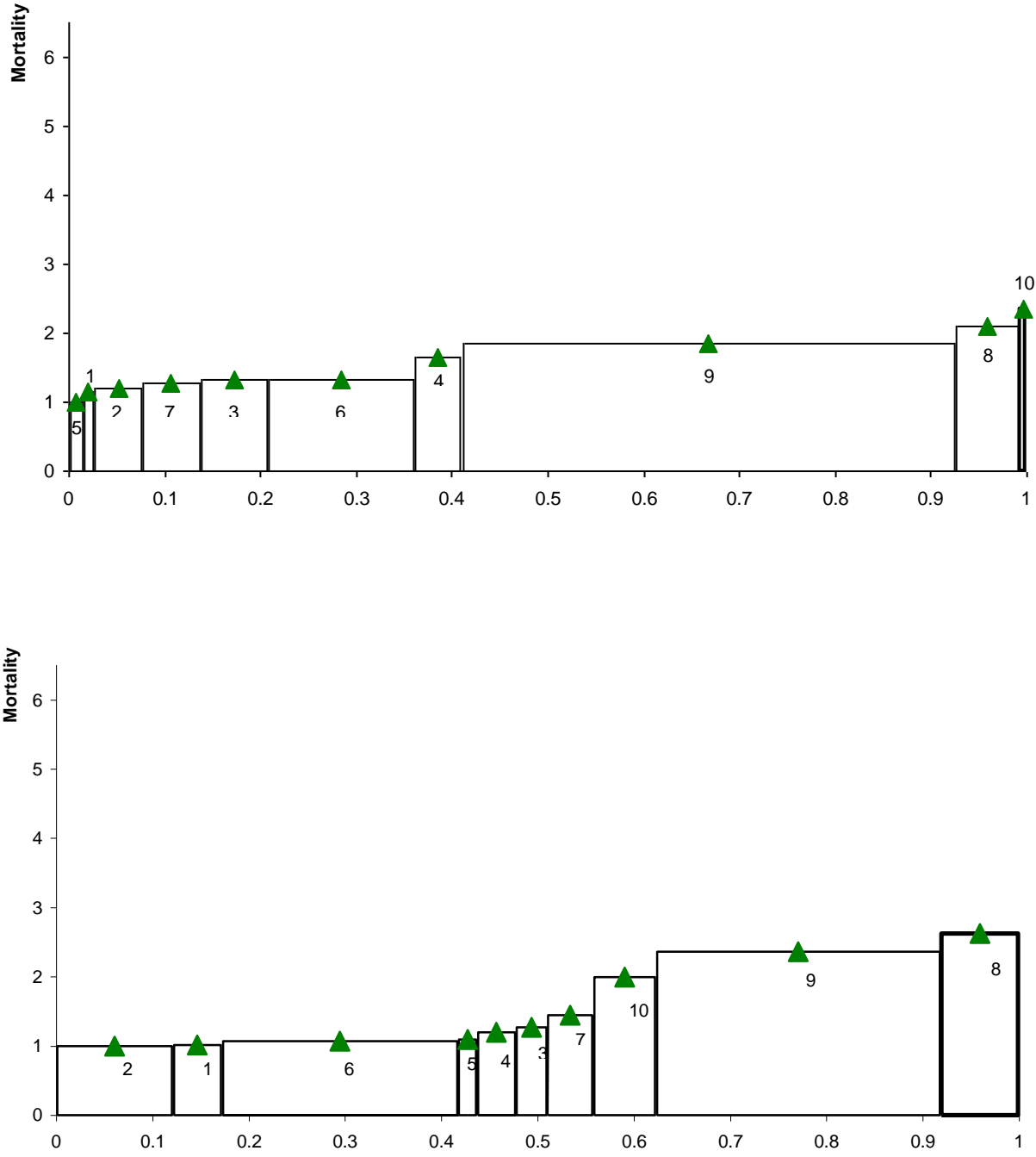


Abscissa : cumulative part of the population. Categories are ranked according to their mortality level.

Ordinate: mortality ratio, according to a Cox model. The reference 1 correspond to the category with the lowest mortality.

Categories in the figure: 1 - professionals and managers; 2 - intermediate white-collar workers; 3 - farmers; 4 - self-employed (except farmers), 5 - skilled manual workers; 6 - office and sale personnel; 7 - unskilled manual workers; 8 - retired; 9 - other inactive (comprises job-seekers and other inactive).

**Figure 2 – Mortality ratios standardised on age, women, periods 1968-1974 (top) and 1990-1996 (bottom)**



Abscissa: cumulative part of the population. Categories are ranked according to their mortality level.

Ordinate: mortality ratio, according to a Cox model. The reference 1 correspond to the category with the lowest mortality.

Categories in the figure: 1 - professionals and managers; 2 - intermediate white-collar workers; 3 - farmers; 4 - self-employed (except farmers), 5 - skilled manual workers; 6 - office and sale personnel; 7 - unskilled manual workers; 8 - retired; 9 - inactive (except retired and job-seekers); 10 - job-seekers.

**Table 3 – Magnitude of inequalities quantified by RIIs, comparison between four periods**

Period	Men				Women			
	Comparisons 1, employed at the census only (1)		Comparisons 2, employed or not at the census (2)		Comparisons 1, employed at the census only (1)		Comparisons 2, employed or not at the census (2)	
	RII	95% CI	RII	95% CI	RII	95% CI	RII	95% CI
1968-1974	2.06	1.83; 2.32	3.53	3.20; 3.90	1.38	1.07; 1.79	1.94	1.68; 2.25
1975-1981	2.91	2.57; 3.30	4.98	4.47; 5.55	1.34	1.03; 1.76	2.21	1.89; 2.59
1982-1988	2.63	2.31; 2.98	5.83	5.24; 6.48	1.55	1.18; 2.04	3.27	2.76; 3.87
1990-1996	2.39	2.06; 2.78	6.54	5.81; 7.36	1.52	1.09; 2.12	3.88	3.22; 4.67

(1) According to the occupation at the census in seven categories: professionals, farmers, own-account workers (except farmers), intermediate, junior white collar, skilled workers, unskilled workers.

(2) According to the situation at the census in ten categories for women (seven as above for those occupied at the census, plus: retired; looking for a job, other unoccupied) and nine categories for men (“looking for a job and other inactive” grouped).

**Table 4 – Inequalities by cause specific mortality; RIIs according to the situation at the census**

Period	Total mortality	Cancer (1)	Cardio Vascular (2)	External causes (3)	Other causes	Total mortality	Cancer (1)	Cardio Vascular (2)	External causes (3)	Other causes
Number of deaths (4)	21003	7625	5109	2449	5820	9418	3749	2006	854	2809
1968-1974	3.53	2.27	2.96	3.16	7.42	1.94	1.39	2.13		3.27
1975-1981	4.98	3.56	3.31	5.21	12.09	2.21	1.51	2.98		3.58
1982-1988	5.83	4.29	4.17	5.18	16.27	3.27	2.19	3.96		8.70
1990-1996	6.54	4.68	5.00	5.72	16.58	3.88	2.41	7.13		7.37

(1) Codes 140-239, ICD-9 or ICD-8

(2) Codes 390-459, ICD-9; codes 390-444.1; 444.3-458; 782.4, ICD8

(3) Codes E800-E999, ICD-9 or ICD-8. Results given only for men, due to small numbers in some categories among women.

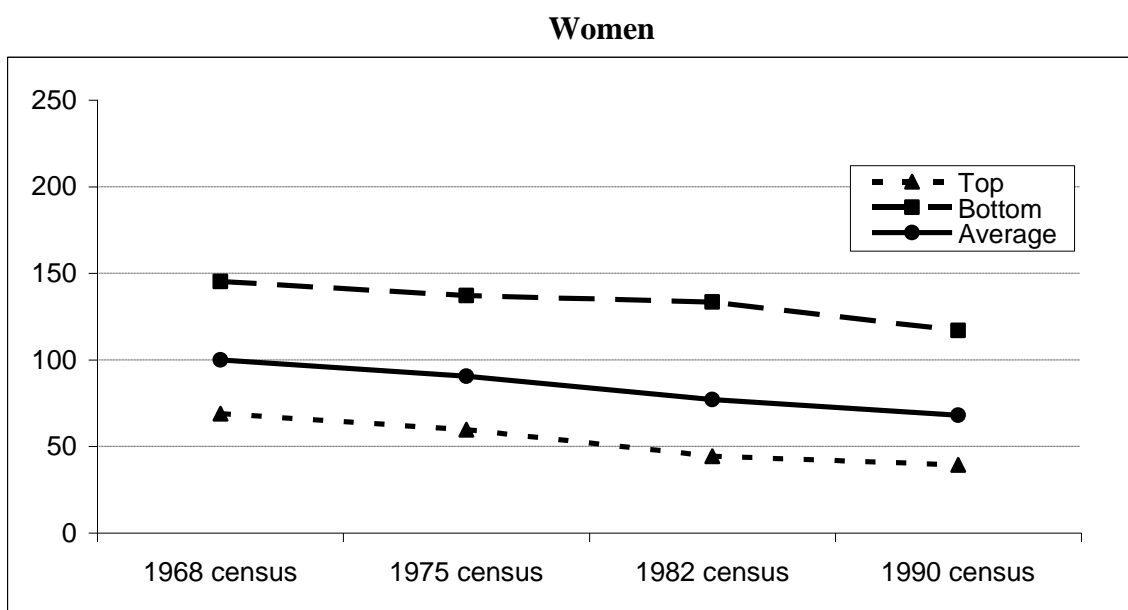
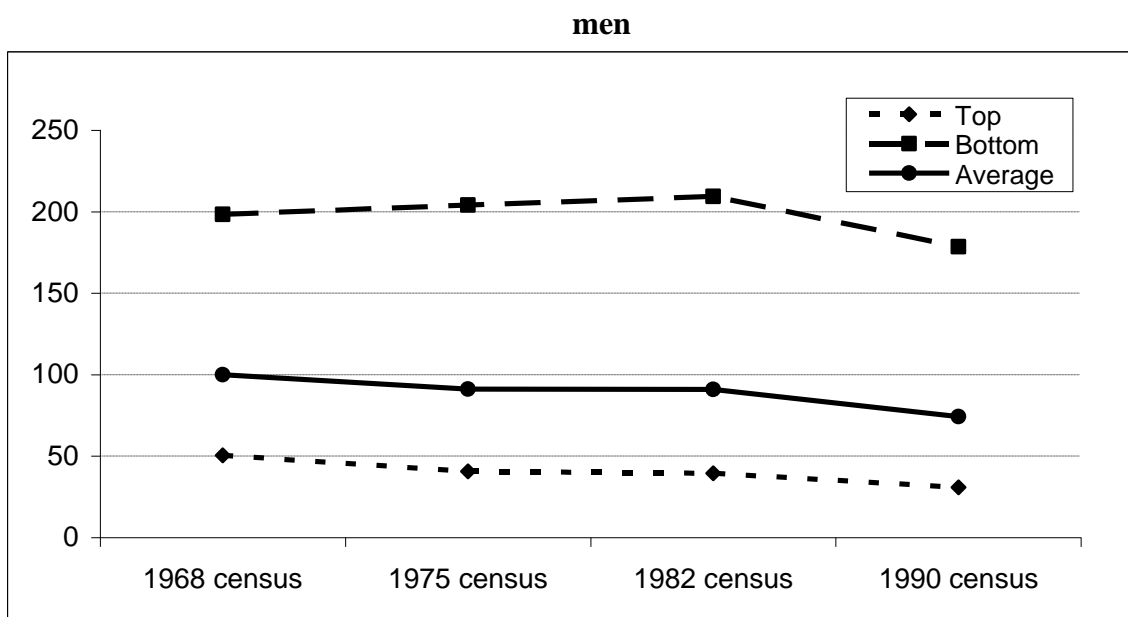
(4) Total number for the four periods

**Table 5 – Model describing changes in mortality and changes in inequalities over the period 1968-1996 ( employed or not at the census)**

	Men		Women	
	Estimate (1)	95% CI	Estimate (1)	95% CI
Changes in mortality				
1968 census	1		1	
1975 census	0.91	0.87; 0.95	0.91	0.85; 0.96
1982 census	0.91	0.87; 0.95	0.77	0.72; 0.82
1990 census	0.74	0.71; 0.78	0.68	0.64; 0.72
Inequality				
RII	3.94	3.57; 4.35	2.11	1.82; 2.44
Interaction terms, inequality x period				
RII x 1975 census	1.28	1.11; 1.47	1.09	0.88; 1.34
RII x 1982 census	1.35	1.17; 1.55	1.42	1.15; 1.76
RII x 1990 census	1.47	1.27; 1.70	1.41	1.13; 1.74

(1) round numbers; those given in the appendix are more precise.

Figure 3 – Mortality changes over time, top and bottom of the socioeconomic scale (1)



(1) the reference, 100, is the mortality of a person with an average socio-economic situation at the first period.