



HAL
open science

Multicentric Standardized Flow Cytometry Routine Assessment of Patients With Sepsis to Predict Clinical Worsening

Thomas Daix, Estelle Guerin, Elsa Tavernier, Emmanuelle Mercier, Valérie Gissot, Olivier Herault, Jean-Paul Mira, Florence Dumas, Nicolas Chapuis, Christophe Guitton, et al.

► **To cite this version:**

Thomas Daix, Estelle Guerin, Elsa Tavernier, Emmanuelle Mercier, Valérie Gissot, et al.. Multicentric Standardized Flow Cytometry Routine Assessment of Patients With Sepsis to Predict Clinical Worsening. *Chest*, 2018, 154 (3), pp.617–627. 10.1016/j.chest.2018.03.058 . hal-01881116

HAL Id: hal-01881116

<https://inserm.hal.science/hal-01881116>

Submitted on 2 Jul 2019

HAL is a multi-disciplinary open access archive for the deposit and dissemination of scientific research documents, whether they are published or not. The documents may come from teaching and research institutions in France or abroad, or from public or private research centers.

L'archive ouverte pluridisciplinaire **HAL**, est destinée au dépôt et à la diffusion de documents scientifiques de niveau recherche, publiés ou non, émanant des établissements d'enseignement et de recherche français ou étrangers, des laboratoires publics ou privés.

Abstract word count: 257 words

Text word count: 3473 words

Multicentric standardized flow cytometry routine assessment of septic patient to predict clinical worsening

Running head: New tool to predict clinical course during sepsis

Thomas Daix^{1,2}, MD, Estelle Guerin^{3,4}, MD, Elsa Tavernier⁵, PhD, Emmanuelle Mercier⁶, MD, Valérie Gissot⁵, MD, Olivier Hérault⁷, MD, Jean-Paul Mira⁸, MD, PhD, Florence Dumas⁹, MD, Nicolas Chapuis¹⁰, MD, Christophe Guitton¹¹, MD, Marie C Béné¹², PharmSciD, PhD, Jean-Pierre Quenot¹³, MD, Cindy Tissier¹⁴, MD, Julien Guy¹⁵, MD, Gaël Piton¹⁶, MD, Anne Roggy¹⁷, MD, Grégoire Muller¹⁸, MD, Éric Legac¹⁹, MD, Nicolas de Prost²⁰, MD, Mehdi Khellaf²¹, MD, PhD, Oriane Wagner-Ballon²², MD, Rémi Coudroy²³, MD, Elodie Dindinaud²⁴, MD, Fabrice Uhel²⁵, MD, Mikaël Roussel²⁶, MD, Thomas Lafon^{27,2}, MD, Robin Jeannet³, MD, Frédéric Vargas²⁸, MD, PhD, Catherine Fleureau²⁹, MD, Mickaël Roux³⁰, MD, Kaoutar Allou³¹, PharmD, Philippe Vignon^{1,2,32}, MD, PhD, Jean Feuillard^{4,5}, MD, PhD, Bruno François^{1,2,32}, MD for the Septiflux trial Group

¹Réanimation Polyvalente, CHU Dupuytren, Limoges, France

²Inserm CIC1435, CHU Dupuytren, Limoges, France

Hématologie Biologique, CHU Dupuytren, Limoges, France

⁴CNRS UMR 7276, Université de Limoges, Limoges, France

⁵Inserm CIC1415, CHRU and Université François Rabelais, Tours, France

⁶Réanimation Polyvalente, CHRU de Tours, Tours, France

⁷Hématologie Biologique, CHRU de Tours, Tours, France

⁸Réanimation Médicale Polyvalente, Hôpital Cochin, Assistance Publique des Hôpitaux de Paris, Paris, France

- ⁹Urgences, Hôpital Cochin/Hôtel-Dieu, Assistance Publique des Hôpitaux de Paris and Inserm UMR 970, Université Paris Descartes, Paris, France
- ¹⁰Hématologie Biologique, Hôpital Cochin, Assistance Publique des Hôpitaux de Paris, Paris, France
- ¹¹Réanimation Médicale and Inserm UMR1064 CHU de Nantes, Nantes, France
- ¹²Hématologie Biologique, CHU de Nantes, Nantes, France
- ¹³Réanimation Polyvalente, CHU François Mitterrand and Lipness Team, Centre de Recherche Inserm LNC-UMR1231 and LabExLipSTIC and Inserm CIC 1432, Epidémiologie Clinique, Université de Bourgogne, Dijon, France
- ¹⁴Urgences, CHU de Dijon, Dijon, France
- ¹⁵Hématologie Biologique, CHU de Dijon, Dijon, France
- ¹⁶Réanimation Médicale, CHRU de Besançon, Université de Franche Comte, UFR SMP, EA3920, Besançon, France
- ¹⁷Inserm UMR1098 and Laboratoire d'Immunologie, EFS BFC, Besançon, France
- ¹⁸Réanimation Médicale, CHR d'Orléans, Orléans, France
- ¹⁹Hématologie Biologique, CHR d'Orléans, Orléans, France
- ²⁰Réanimation Médicale, CHU Henri Mondor, Assistance Publique-Hôpitaux de Paris, DHU A-TVb, and Université Paris Est Créteil, Faculté de Médecine de Créteil, Groupe de Recherche CARMAS, Créteil, France
- ²¹Urgences, Assistance Publique-Hôpitaux de Paris, CHU Henri Mondor, Créteil, France
- ²²Hématologie et Immunologie Biologiques, Assistance Publique-Hôpitaux de Paris, CHU Henri Mondor and Université Paris-Est Créteil, Inserm UMR 955, Créteil, France
- ²³Réanimation Médicale, CHU de Poitiers, Poitiers, France
- ²⁴Hématologie Biologique, CHU de Poitiers, Poitiers, France
- ²⁵Réanimation Médicale and Inserm CIC1414, CHU de Rennes, and Inserm UMR 917, Université de Rennes, Rennes, France
- ²⁶Hématologie Biologique and Inserm UMR 1236, CHU Pontchaillou, Rennes, France
- ²⁷Urgences, CHU Dupuytren, Limoges, France

²⁸Réanimation, CHU de Bordeaux, Bordeaux, France

²⁹Anesthésie – Réanimation II, CHU de Bordeaux, Pessac, France

³⁰Urgences, CHU de Bordeaux, Bordeaux, France

³¹Hématologie Biologique, CHU de Bordeaux, Bordeaux, France

³²Inserm UMR 1092, Université de Limoges, Limoges, France

Corresponding author:

Bruno FRANCOIS, MD, Service de Réanimation Polyvalente, CHU de Limoges,

2 Avenue Martin Luther King, 87042 LIMOGES cedex, France

Email: b.francois@unilim.fr

Conflicts of interest: The authors declare that they have no conflict of interest

Funding: This study was supported by a grant from the French Ministry of Health (Septiflux 2, 2012, I11 020: PHRCN 12 016 04 51).

Prior abstract presentations:

- Congress of the *Société de Réanimation de Langue Française*. 13-15 January 2016, Paris, France
- Congress of the *Société Française d'Hématologie*. 23-23 March 2016, Paris, France
- Congress of the European Hematology Association. 9-12 June 2016, Copenhagen, Denmark
- Congress of the *Société Française d'Anesthésie Réanimation*, 22-24 September 2016, Paris, France

Abbreviation list

AUC: area under the curve

CBC: complete blood count

ED: emergency department

FCGR1: immunoglobulin G Fc-gamma-R1

FCM: flow cytometry

HIV: human immunodeficiency virus

ICU: intensive care unit

IG: immature granulocytes

MAP: mean arterial pressure

NLR: neutrophil/lymphocyte ratio

qSOFA: quick SOFA

ROC: receiver operating characteristics

SAPS: simplified acute physiology score

SIRS: systemic inflammatory response syndrome

SOFA: sequential organ failure assessment

WBC: white blood cell

Abstract

Background: In this study, we primarily sought to assess the ability of flow cytometry to predict early clinical deterioration and overall survival in septic patients admitted in the emergency department and intensive care unit.

Methods: Patients admitted for community-acquired acute sepsis from 11 hospital centers were eligible. Early (Day 7) and late (Day 28) deaths were notified. Levels of CD64^{pos} granulocytes, CD16^{pos} monocytes, CD16^{dim} immature granulocytes (IG), T and B lymphocytes were assessed by flow cytometry, using an identical, cross-validated, robust and simple consensus standardized protocol in each center.

Results: Among 1062 patients screened, 781 patients with confirmed sepsis were studied (age: 67±48 years, SAPS II: 36±17, SOFA: 5±4). Patients were divided into three groups (sepsis, severe sepsis and septic shock) on Day 0 and on Day 2. On Day 0, septic patients exhibited increased level of CD64^{pos} granulocytes, CD16^{pos} monocytes and IG with T-cell lymphopenia. Clinical severity was associated with higher percentages of IG and deeper T-cell lymphopenia. IG percentages tended to be higher in patients whose clinical status worsened on Day 2 (35.1 ± 35.6 vs 43.5 ± 35.2, p=0.07). Increased IG percentages were also related to occurrence of new organ failures on Day 2. Increased IG percentages, especially when associated with T-cell lymphopenia, were independently associated with early (p<0.01) and late (p<0.01) death.

Conclusions: Increased circulating IG at the acute phase of sepsis are linked to clinical worsening, especially when associated with T-cell lymphopenia. Early flow cytometry could help clinicians to target patients at high risk of clinical deterioration.

Clinical trial registration: ClinicalTrials.gov: NCT01995448.

Keywords: Sepsis, Inflammation, Immunosuppression, Flow cytometry, Prognosis

Background

Sepsis is a major healthcare burden and the leading cause of mortality in critically ill patients. Despite early recognition of septic patients, which is closely related to prognosis¹ and appropriate care, some of them present early clinical deterioration²⁻⁴. Several clinical trials tried to evaluate the value of various markers such as Presepsin or N-GAL in predicting the clinical course of septic patients admitted to the emergency department (ED)⁵⁻⁸. Most of these studies were single-center, small population-based trials and evaluated the ability of a given biomarker to predict late death in septic patients. Nevertheless, no trial has yet assessed the ability of biomarkers to accurately predict early clinical deterioration. Moreover, prior studies showed that patients who are secondarily transferred from a general hospital ward to the intensive care unit (ICU) have a poorer prognosis than patients admitted directly to the ICU from the ED^{4,9,10}. Accordingly, a biological marker allowing early prediction of sepsis progression would be highly valuable on clinical grounds to identify the population at high risk of short-term deterioration and to determine the required level of monitoring and hospital admission location.

Sepsis course is not only related to the clinical status and medical history of patients, but also highly influenced by the host's response to infection^{11,12} with major changes of circulating white blood cell (WBC) levels. Flow cytometry (FCM) is the reference method to characterize the immunophenotype of WBC. Major improvements have been achieved in FCM harmonization and in quality external controls which allow inter-laboratory comparisons^{13,14}. FCM is increasingly used routinely to identify and quantify hematopoietic cells as it is more precise, rapid and reproducible than conventional cytology¹⁵.

In a pilot study¹⁵, we previously showed that the level of immature granulocytes (IG) could be a good candidate to predict early clinical deterioration at the acute phase of sepsis. These preliminary results needed to be validated in a larger population of septic patients based on a multicenter FCM protocol. Accordingly, the primary objective of the present study was to confirm the ability of IG levels to predict early clinical deterioration on Day 2. Secondary objectives were to assess the ability of other leukocyte subsets which are known

to be modified during sepsis, such as inflammatory CD64^{pos} granulocytes, pro inflammatory CD16^{pos} monocytes and CD3^{pos} T-cells and CD24^{pos} B-cells to predict early clinical deterioration (Day 2) and mortality (Day 7 and Day 28). We also evaluated the link between IG levels and mortality (Day 7 and Day 28) of acute septic patients admitted in ICU and ED.

Material and methods

Patients and controls

This prospective, multicenter observational study was accepted by the Ethics Committee of Limoges University Hospital, approval number 119-2013-19. Written information was given to the patients or next-of-kin if patients were unable to approve their participation in the study and informed consent was obtained from all. The trial was registered in ClinicalTrials.gov: NCT01995448.

Patients admitted to one of the participating centers' ED or ICU with at least two criteria in favor of a systemic inflammatory response syndrome (SIRS) and a clinically or microbiologically documented infection evolving for less than 24 hours were eligible. The patients were divided into three groups of severities upon study enrollment, based on previous definitions: (i) sepsis, (ii) severe sepsis and (iii) septic shock^{16,17}. Exclusion criteria included pregnancy, solid tumor, HIV infection, history of hematological or inflammatory condition, immunosuppressive treatment and a time to ICU admission exceeding 48 hours. Demographic data and a simplified acute physiology score (SAPS II) were recorded on admission. To evaluate clinical deterioration, organ failure i.e. respiratory (mechanical ventilation 12h/day or PaO₂/FiO₂ < 300), renal (urine output <0.5 mL/kg/h despite fluid resuscitation), hematological (platelets count < 100x10⁹/L), metabolic (lactatemia > 2 mmol/L) or circulatory failure reflected by hypotension (MAP < 60mmHg or need for vasopressor) and Sequential Organ Failure Assessment (SOFA) were compared between the inclusion visit and that of Day 2 after admission.

Each suspected infection as well as the diagnosis and severity of acute sepsis were validated by an independent adjudication committee including two independent experts based on the initial sepsis definition¹⁶. In addition, patients were separated according to the initial course of the disease. Sepsis was defined as worsening when deteriorating from sepsis to severe sepsis or septic shock or from severe sepsis to septic shock, or when the patient died by Day 2. In all other cases, sepsis was defined as stable or improved. Vital status was also evaluated on Day 7 and Day 28.

The control group included 20 outpatients without any hematological or infectious disorders who were recruited in all participating centers.

Flow cytometry

At the time of patients' enrollment, 8-color immunophenotyping was performed with a FCM protocol close to that currently used in daily clinical practice of participating centers. The two types of flow cytometers used were NaviosTM (Beckman Coulter, Miami, FL) or Canto IITM (BD Biosciences, San Jose, CA). The instruments were harmonized as previously described by Solly et al¹³. As training for local laboratories and to insure inter-center reproducibility, FCM results of controls and of the first 20 patients were first analyzed in the local laboratory and then by the coordinating center where results and thresholds proposed by each center were validated before going on with the study. We checked that mean fluorescence intensity and percentage of positive cells for CD16, CD10 and CD64 for these patients were comparable between centers and flow cytometers (e-Figure 1). We also checked that CD3+ T cell absolute counts were in the same range between centers (e-Figure 1).

The gating strategy, performed with the KaluzaTM (Beckman Coulter) software, is presented in supplementary material (e-Table 1 and e-Figure 2). In each laboratory, fluorescence thresholds to assess the percentages of CD16^{dim} and CD10^{dim} granulocytes, CD64^{pos} granulocytes and CD16^{pos} monocytes were set-up by comparison with healthy controls so that more than 95% of controls exhibited less than 5% of each population of interest. Expression stability of the markers was checked up to 12 h after sampling (data not shown).

FCM analysis was performed on leftovers of complete blood count (CBC) within 12 hours after sample collection at ICU or ED admission (e-Table 2). In one single tube, we evaluated B-lymphocytes, defined by the expression of CD24 (CD24^{pos}), global T-lymphocytes subsets defined by the expression of CD3 (CD3^{pos}). For monocytes subsets we evaluated proinflammatory monocytes which are characterized by the expression of CD16 (CD16^{pos}). For granulocytes we evaluated the expression of CD64 which is known to be high during sepsis (proinflammatory granulocytes - CD64^{pos}) and IG defined by the low expression of CD16. IG, CD64^{pos} granulocytes, T and B lymphocytes and proinflammatory CD16^{pos} monocytes were quantified as percentages. Absolute counts were then calculated from CBC. For each patient we recorded neutrophil and lymphocyte counts from the CBC performed on the same blood sample as FCM analysis and evaluated the neutrophil/lymphocyte ratio (NLR).

Statistical analysis

Analyses were performed on the whole study population and on the 3 distinct groups of septic patients (sepsis, severe sepsis, septic shock). Qualitative variables were expressed as numbers and percentages and quantitative variables were expressed as means \pm standard deviations. Population characteristics were compared between the 3 groups. Quantitative variables were compared using Anova tests, qualitative variables were compared using Chi² tests, or exact Fisher tests when appropriate. Since our study was explanatory, we did not perform alpha adjustment to take into account multiplicity of tests. To assess the ability of all leukocyte subsets analyzed by FCM and NLR ratio in predicting the sepsis course on Day 2, we performed univariate logistic regressions, receiver operating characteristics (ROC) curves and calculated areas under the curve (AUC). Survival curves were estimated using the Kaplan-Meier method, and differences between groups were tested for significance with the log-rank test. Quantitative variables were compared with Student's T tests. Analyses were performed using R software version 3.1.0 and Medcalc 11.1.1 (Ostend, Belgium).

Results

Study population

Between January 2013 and June 2015, 1062 patients were screened (530 from ICU and 532 from ED) in 11 French hospital centers, and 281 of them were secondarily excluded for unconfirmed sepsis (n=242) or lack of FCM data (n=39). Finally, 781 consecutive patients with confirmed sepsis (sepsis: n=343; severe sepsis: n=192; septic shock: n=246) were analyzed (age: 67±48 years; SAPS II: 36±17; SOFA: 5±4) and 769 completed the study (Figure 1, Table 1). Among the 781 consecutive patients, 732 patients had a clinically documented infection – 327 of them with a microbiological confirmation – and the 49 remaining patients had only a microbiologically confirmed infection. Pulmonary and urinary infections were the main causes of sepsis (Table 1). Clinical deterioration on Day 2 was observed in 25 (8%), 21 (12%) and 21 (9%) patients with sepsis, severe sepsis and septic shock, respectively. Forty-eight patients (6%) were deceased on Day 7 and 79 patients (10%) on Day 28 (Figure 1, Table 1).

Leukocyte subsets on Day 0

To enumerate precisely IGs with CD64^{pos} neutrophils, monocytes and CD3^{pos} T-cells, we set up a robust standardized 8-color FCM protocol identical in the 11 university hospital centers. Upon admission, the three groups of septic patients, when compared to healthy controls, exhibited significant increased leukocyte counts (14.55 10⁹/L ± 6.13 in sepsis vs 6.59 10⁹/L ± 1.65 in controls, Table 2), due to elevated percentages of granulocytes (79.3% ± 10.94 in sepsis vs 57.47% ± 9.24 in controls, Table 2). Conversely, the levels of CD3^{pos} T-cells were significantly lower (0.84 10⁹/L ± 0.58 in sepsis vs 1.53 10⁹/L ± 0.58 in controls, Table 2). T-cell lymphopenia was even more profound in severe sepsis and septic shock (Table 2 and Figure 2). The global percentage of monocytes was mildly decreased, but the proportion of CD16^{pos} monocytes was significantly higher (12.37% ± 4.32 of total monocytes in controls vs 20.39% ± 11.51 in sepsis), with values increasing with the severity of sepsis (Table 2 and Figure 2). Among granulocytes, percentages of both CD64^{pos} and CD16^{dim} IGs were

significantly increased (Table 2). Again, these percentages increased with the severity of sepsis, especially for IG (Table 2 and Figures 2 and 3).

NLR was significantly higher in patients with severe sepsis when compared to those with sepsis (21.30 ± 23.5 vs 15.97 ± 19.14 ; $p < 0.05$), but not between patients with septic shock and those with severe sepsis (Table 1).

Clinical worsening on Day 2

Percentages of monocytes tended to be higher in patients with early clinical deterioration compared to others (Table 3, $6.7\% \pm 4.1$ vs $5.3\% \pm 3.1$, $p < 0.01$) with a proportion of CD16^{pos} pro inflammatory monocytes unchanged when compared to improved/stable patients.

Whole lymphocyte counts were not related to clinical deterioration on Day 2, but CD3^{pos} T-lymphocytes counts tended to be lower in patients with early clinical deterioration (Table 3, $0.5 \cdot 10^9/L \pm 0.5$ vs $0.7 \cdot 10^9/L \pm 0.5$, $p = 0.06$). Increased percentages of IG tended to be higher in patients whose clinical status worsened on Day 2 (Table 3, $35.1\% \pm 35.6$ vs $43.5\% \pm 35.2$, $p = 0.07$). IG increase on Day 0 was also statistically significantly associated with the occurrence of new organ failures on Day 2 and especially thrombocytopenia on Day 2 (33.4 ± 34.4 vs 67.2 ± 31.8 , $p < 0.01$) (Table 4). NLR was not associated with clinical deterioration on Day 2 (OR=1.21; 95% CI [0.77; 2.23]; $p = 0.54$; AUC = 0.52).

CD64 expression was statistically significantly higher in patients who presented new renal failure on Day 2 ($p < 0.001$) but was not associated with a worsening of sepsis on Day 2 (Table 3 and e-Table 3).

Early and late death

We did not find any significant association between NLR and early death (OR = 0.63; 95% CI [0.32; 1.28]; $p = 0.2$; AUC = 0.56) nor between NLR and late death (OR = 1.18, 95% CI [0.69; 2.07]; $p = 0.55$; AUC = 0.52).

As presented in Figure 4A, 77% of the patients who died on Day 7 had a percentage of IG over 30% on Day 0. In contrast, only 42% of patients still alive on Day 7 had IG above this threshold ($p < 0.001$).

Patients with less than 30% circulating IG had a 95% overall survival rate at Day 28. As shown in Figure 4B, associated deep T-cell lymphopenia ($< 0.25 \times 10^9/l$) did not significantly modify the prognosis of these patients. As for early clinical deterioration and Day-7 death, percentages of circulating IG at the early phase of sepsis over 30% were significantly linked with the probability of Day-28 death (19.6 ± 17 vs 56.5 ± 42.4 < 0.01 , Figure 4B). Association with deep T-cell lymphopenia deteriorated the prognosis with approximately 80% overall survival rate on Day 28 (Figure 4B). Of note, the 95% CI of the survival curve of patients with both IG $> 30\%$ and T-cell lymphopenia < 0.25 G/L did not overlap that of patients with IG $< 30\%$, irrespective of lymphocytosis (e-Figure 3). When considering the latter group as reference, patients with both increased IG and decreased lymphocytosis exhibited an OR of 3.88 (95% CI [2.14; 7.04]) for D7 death.

Discussion

In this multicenter study, we showed the feasibility and the reproducibility of a leukocyte immunophenotyping by FCM in septic patients and its clinical value using a robust FCM protocol close to that used in daily clinical practice. Increased percentages of circulating CD16^{dim} IG at hospital admission were significantly associated with the severity of sepsis. High IG levels also appeared to be associated with a clinical deterioration on Day 2, and with early (Day 7) and late (Day 28) death. This confirms our previous results and the prognostic value of this leukocyte subset in septic patients¹⁵. We obtained these data using the samples collected for classical CBC, within a few hours after the diagnosis of sepsis either in the ED or in the ICU. Early FCM could thus be informative to help front-line clinicians in the ED or ICU determining the appropriate level of monitoring and the need for ICU admission. Specifically, prognostic scores commonly used in septic patients (e.g., SOFA score and

APACHE II) ^{18,19} are difficult to implement routinely in the ED. Despite a good prognostic value on a global population, these scores could fail individually in certain patients. In addition, leukocyte immunophenotyping and especially IG level and depth of lymphopenia evaluated on leftovers of a blood sample could provide clinicians with early information on patients' immune status and could be of prognostic value.

This multicenter study was based on the former definition of sepsis ¹⁶. Nevertheless, the prediction of early clinical deterioration of septic patients remains challenging, irrespective of the definition used. Traditional definition of sepsis was based on the association of SIRS and infection ¹⁶, whereas the use of quick SOFA (qSOFA) has recently been proposed to better identify high-risk patients with suspected infection outside the ICU ²⁰. Both qSOFA and SIRS criteria lack specificity in the ED setting since some patients without confirmed sepsis present with a qSOFA or SIRS criteria ≥ 2 ²¹.

Our study confirmed that early increased percentages of CD64^{pos} granulocytes and, to a lesser extent CD16^{pos} monocytes, were strongly associated with the diagnosis of sepsis ¹⁵. CD64 expression, the high-affinity receptor for immunoglobulin G Fc-gamma-RI (FCGR1), on granulocytes has been reported to have a relevant specific diagnostic value to early identify sepsis in adult patients ²²⁻²⁴. Although they increased with the severity of sepsis, the levels of either CD64^{pos} granulocytes or CD16^{pos} monocytes did not influence the survival rate of patients with sepsis, suggesting that changes in these leukocyte subsets probably reflect the infectious status but are not linked to clinical severity.

Identification of IG using microscopic blood smear examination by a human being, with the problem of separating band cells from mature neutrophils, is poorly reproducible ^{11,12,15}. This problem is even more pronounced during sepsis, because granulocytes suffer various morphological changes related to their bactericidal activity, such as degranulation, vacuolization of the cytoplasm or alterations of nucleus lobulation. Automated cytological recognition of cells would be theoretically feasible. Yet, comparison between counting of granulocytes on blood smears with one of the most popular apparatus (DM9600 from

Cellavision[®], Lunt, Sweden) and FCM was performed by two of us (EG and JF), and the correlation was very poor (data not shown). In contrast, NLR is an easily obtained hematological parameter ²⁵. To our knowledge, no trial has yet evaluated the link between NLR and clinical deterioration. Moreover, cutoff values are not well defined ²⁶. In the present study we did not find any value of NLR to predict a clinical deterioration on day 2 or both early and late death. Some cell counters propose to count IG but these counting methods are based on proprietary methods that preclude any universal solution. Conversely, FCM allows counting cells in a manner that is independent of any industrial supplier. Here, IG were defined by decreased CD16 expression, which spans almost all stages of immature granulocytes ²⁷. To reduce center-related bias the FCM protocol was standardized and implemented in each routine laboratory of the 12 participating centers, based on a preliminary consensus and on a training step in order to obtain homogeneous results. In including more than 700 patients in the acute phase of sepsis in a multicenter trial, we demonstrate the feasibility of incorporating a simple, robust and standardized FCM protocol in routine care not only in ICU ²³, but also in the ED.

Based on the inclusion of a large and heterogeneous population hospitalized in EDs and ICUs for proven sepsis, IG levels measured using FCM appeared as a powerful predictor of the clinical course of sepsis, both in terms of impending organ failure and survival. This is in agreement with the known major role played by granulocyte subsets in the immune response at the acute phase of sepsis ¹⁵. Dysregulation of systemic inflammation, which may be reflected by high percentages of IG ²⁸, is a common trigger of clinical deterioration and worsening organ failures ²⁹⁻³¹. Indeed, as previously shown in a surgical population, IG percentages reflect the intensity of the inflammatory insult ²⁸. Increased percentages of IG during sepsis are related to the expression of proinflammatory cytokines such as IL-6 and IL-8 ³². This association between circulating cytokine levels and percentages of IG could explain the significant link between clinical severity and IG levels. On the other hand, IG could directly contribute to the SIRS. Indeed, having some bacterial

phagocytosis and killing properties, IGs express increased levels of tumor necrosis factor- α when compared to IL-10, suggesting a proinflammatory phenotype ³³.

Drewry et al. have reported that persistent lymphopenia after a diagnosis of sepsis is associated with mortality ³⁴. In the present study, global lymphopenia was predominantly related to T-cell lymphopenia. Profound T-cell lymphopenia, a marker of immunosuppression, also appeared to be prognostic, but only when associated with high percentages of circulating IG ^{31,34}. In that case, the IG subset harbors a myeloid derived suppressor cell (MDSC) fraction able to kill T-cells ¹⁵. The prognostic value of T-cell lymphopenia could be explained by a higher risk of secondary opportunistic infection leading to prolonged hospitalization ³¹.

The present study has several limitations. First, we enrolled a large cohort of septic patients with various origins and severity coming from the ICU and ED and interpretation of FCM results could somehow vary between centers. This variability could explain why the monocyte count by FCM was not robust enough to be validated, in a multicenter manner, as a predictor of sepsis deterioration. In contrast, by overcoming these sources of variability, this multicenter study allowed the clear demonstration that granulocyte immunophenotyping, and especially IG level, is a robust predictor of clinical course and short and long-term mortality. Other cell markers could have been tested, such as expression of HLA-DR on monocytes³⁵. We chose not to assess this parameter because published pre-analytical conditions are rather strict ³⁶, and thus incompatible with the daily practice of the centers participating in this study. To confirm that IG level is a predictor of the sepsis evolution raises the question of immunosuppression in sepsis, since this compartment encompasses MDSCs. In that view, future studies focusing on the PD-1/PD-L1 axis could be of interest ³⁷. However, expression of these markers would certainly have to be studied not only on granulocytes (including IG and MDSCs) but also on all other circulating leukocyte subsets among them monocytes, dendritic cells or lymphocyte subpopulations.

Conclusion

This multicenter study shows that IG is a biological marker of severity at the early phase of sepsis since (i) it accurately identifies patients at high risk of early clinical deterioration who require advanced monitoring, and (ii) it is linked with early and late death, especially when associated with T-cell lymphopenia. To quantify IG by standardized FCM based on decreased CD16 expression was technically simple. In the near future, routine quantification of circulating IG using FCM could help front-line clinicians in predicting the outcome of patients with acute sepsis both in the ED and in the ICU.

Acknowledgments

Dr Bruno François takes responsibility for the content of the manuscript, including the data and analysis.

Authors' contributions: TD, EG, PV, JF, BF: designed the study, enrolled patients or performed flow cytometry on samples, analyzed the final data and drafted the manuscript
EM, VG, OH, JPM, FD, NC, CG, MCB, JPQ, CT, JG, GP, AR, GM, EL, NP, MK, OWB, RC, ED, FU, M Roussel, TL, RJ, FV, CF, M Roux, KA: enrolled patients or performed flow cytometry on samples, critically reviewed the manuscript.

All authors read and approved the final version of the manuscript.

Financial/nonfinancial disclosures: The authors declare that they have no conflict of interest

Role of the sponsors: This study was supported by a grant from the French Ministry of Health (Septiflux 2, 2012, I11 020: PHRCN 12 016 04 51). It was not involved in the conduct of the study and the writing of the manuscript.

Collaborators: Septiflux trial group

- Adollès Di Vittorio : Urgences, CHRU Tours, Tours, France
- Sébastien Lachot : Hématologie Biologique, CHRU Tours, Tours, France
- Marie-Thérèse Georget : Hématologie Biologique, CHRU Tours, Tours, France
- Joelle Hanna : Hématologie Biologique, CHRU Tours, Tours, France
- Cédric Bretonnière : Réanimation Médicale, CHU de Nantes, Nantes, France
- Olivier Zambon : Réanimation Médicale, CHU de Nantes, Nantes, France
- Laurent Nicolet : Réanimation Médicale, CHU de Nantes, Nantes, France
- Noëlle Brule : Réanimation Médicale, CHU de Nantes, Nantes, France

- Camille Debord : Hématologie Biologique, CHU de Nantes, Nantes, France
- Yannick Le Bris : Hématologie Biologique, CHU de Nantes, Nantes, France
- Nelly Robillard : Hématologie Biologique, CHU de Nantes, Nantes, France
- Auguste Dargent : Réanimation Polyvalente, CHU François Mitterrand / Lipness Team, Centre de Recherche Inserm LNC-UMR1231 / LabExLipSTIC, Université de Bourgogne, Dijon, France
- Anne Bretagnol : Réanimation Médicale, CHR d'Orléans, Orléans, France
- Armelle Mathonnet : Réanimation Médicale, CHR d'Orléans, Orléans, France
- Thierry Boulain : Réanimation Médicale, CHR d'Orléans, Orléans, France
- François Barbier : Réanimation Médicale, CHR d'Orléans, Orléans, France
- Dalila Benzekri : Réanimation Médicale, CHR d'Orléans, Orléans, France
- Isabelle Runge : Réanimation médicale, CHR d'Orléans, Orléans, France
- Toufik Kamel : Réanimation Médicale, CHR d'Orléans, Orléans, France
- Jérôme Cecchini : DHU A-TVb, Réanimation Médicale, CHU Henri Mondor, Assistance Publique-Hôpitaux de Paris / Université Paris Est Créteil, Faculté de Médecine de Créteil, Groupe de Recherche CARMAS, Créteil, France
- Sabine Bouyer : Hématologie Biologique, CHU de Poitiers, Poitiers, France
- René Robert : Hématologie Biologique, CHU de Poitiers, Poitiers, France
- Alexandre Ouattara : Anesthésie – Réanimation II, CHU de Bordeaux / Univ. Bordeaux, Inserm, UMR1034, Biologie des Maladies Cardiovasculaires, Pessac, France

We would like to thank Séverine Laleu and Sébastien Alcolea from the CIC1435 in Limoges who coordinated the study and Sarah Demai who provided medical writing services.

References

1. Gaieski DF, Mikkelsen ME, Band RA, et al. Impact of time to antibiotics on survival in patients with severe sepsis or septic shock in whom early goal-directed therapy was initiated in the emergency department. *Crit Care Med* 2010;38:1045-1053.
2. Kennedy M, Joyce N, Howell MD, Lawrence Mottley J, Shapiro NI. Identifying infected emergency department patients admitted to the hospital ward at risk of clinical deterioration and intensive care unit transfer. *Acad Emerg Med* 2010;17:1080-1085.
3. Vincent JL, Sakr Y, Sprung CL, et al. Sepsis Occurrence in Acutely Ill Patients Investigators. Sepsis in European intensive care units: results of the SOAP study. *Crit Care Med* 2006;34:344-353.
4. Brun-Buisson C, Meshaka P, Pinton P, Vallet B; EPISEPSIS Study Group. EPISEPSIS: a reappraisal of the epidemiology and outcome of severe Sepsis in French intensive care units. *Intensive Care Med* 2004;30:580-588.
5. Carpio R, Zapata J, Spanuth E, Hess G. Utility of presepsin (sCD14-ST) as a diagnostic and prognostic marker of sepsis in the emergency department. *Clin Chim Acta* 2015;450:169-175.
6. Hong DY, Kim JW, Paik JH, et al. Value of plasma neutrophil gelatinase-associated lipocalin in predicting the mortality of patients with sepsis at the emergency department. *Clin Chim Acta* 2016;452:177-181.
7. Franchini S, Marciànò T, Sorlini C, et al. Serum CXCL12 levels on hospital admission predict mortality in patients with severe sepsis/septic shock. *Am J Emerg Med* 2015;33:1802-1804.
8. Zhao GJ, Li D, Zhao Q, et al. Prognostic value of plasma tight-junction proteins for sepsis in emergency department: an observational study. *Shock* 2016;45:326-332.
9. Lundberg JS, Perl TM, Wiblin T, et al. Septic shock: an analysis of outcomes for patients with onset on hospital wards versus intensive care units. *Crit Care Med* 1998;26:1020-1024.

10. Knott JC, Tan SL, Street AC, Bailey M, Cameron P. Febrile adults presenting to the emergency department: outcomes and markers of serious illness. *Emerg Med J* 2004;21:170-174.
11. Davenport EE, Burnham KL, Radhakrishnan J, Humburg P, Hutton P, Mills TC, Genomic landscape of the individual host response and outcomes in sepsis: a prospective cohort study. *Lancet Respir Med* 2016;4:259-271.
12. Emonts M, Sweep FC, Grebenchtchikov N, et al. Association between high levels of blood macrophage migration inhibitory factor, inappropriate adrenal response, and early death in patients with severe sepsis. *Clin Infect Dis* 2007;44:1321-1328.
13. Solly F, Rigollet L, Baseggio L, et al. Comparable flow cytometry data can be obtained with two types of instruments, Canto II, and Navios. A GEIL study. *Cytometry A* 2013;83:1066-1072.
14. Lacombe F, Bernal E, Bloxham D, et al. Harmonemia: a universal strategy for flow cytometry immunophenotyping-A European LeukemiaNet WP10 study. *Leukemia* 2016;30:1769-1772.
15. Guérin E, Orabona M, Raquil MA, et al. Circulating immature granulocytes with T-cell killing functions predict sepsis deterioration. *Crit Care Med* 2014;42:2007-2018.
16. Bone RC, Balk RA, Cerra FB, et al. Definitions for sepsis and organ failure and guidelines for the use of innovative therapies in sepsis. The ACCP/SCCM Consensus Conference Committee. American College of Chest Physicians/Society of Critical Care Medicine. *Chest* 1992;101:1644-1655.
17. Levy MM, Fink MP, Marshall JC, et al. SCCM / ESICM / ACCP / ATS / SIS. 2001 SCCM / ESICM / ACCP / ATS / SIS International Sepsis Definitions Conference. *Crit Care Med* 2003;31:1250-1256.
18. Moreno R, Vincent JL, Matos R, et al. The use of maximum SOFA score to quantify organ dysfunction/failure in intensive care. Results of a prospective, multicentre study. Working Group on Sepsis related Problems of the ESICM. *Intensive Care Med* 1999;25(7):686-696.

19. Knaus WA. Mortality risk prediction in sepsis. *Crit Care Med* 1995;23(10):1793-1794.
20. Singer M, Deutschman CS, Seymour CW, et al. The Third International Consensus Definitions for Sepsis and Septic Shock (Sepsis-3). *JAMA* 2016;315:801-810.
21. Vincent JL, Martin GS, Levy MM. qSOFA does not replace SIRS in the definition of sepsis. *Crit Care* 2016;20:210.
22. Gros A, Roussel M, Sauvadet E, et al. The sensitivity of neutrophil CD64 expression as a biomarker of bacterial infection is low in critically ill patients. *Intensive Care Med* 2012;38:445-452.
23. Wang X, Li ZY, Zeng L, et al. Neutrophil CD64 expression as a diagnostic marker for sepsis in adult patients: a meta-analysis. *Crit Care* 2015;19:245.
24. Icardi M, Erickson Y, Kilborn S, Stewart B, Grief B, Scharnweber G. CD64 index provides simple and predictive testing for detection and monitoring of sepsis and bacterial infection in hospital patients. *J Clin Microbiol* 2009;47:3914-3919.
25. de Jager CP, van Wijk PT, Mathoera RB, de Jongh-Leuvenink J, van der Poll T, Wever PC. Lymphocytopenia and neutrophil-lymphocyte count ratio predict bacteremia better than conventional infection markers in an emergency care unit. *Crit Care* 2010;14(5):R192.
26. Gürol G, Çiftci İH, Terizi HA, Atasoy AR, Ozbek A, Köroğlu M. Are there standardized cutoff values for neutrophil-lymphocyte ratios in bacteremia or sepsis? *J Microbiol Biotechnol* 2015;25(4):521-525.
27. Orr Y, Taylor JM, Bannon PG, Geczy C, Kritharides L. Circulating CD10-/CD16low neutrophils provide a quantitative index of active bone marrow neutrophil release. *Br J Haematol* 2005;131:508-519.
28. Orr Y, Wilson DP, Taylor JM, et al. A kinetic model of bone marrow neutrophil production that characterizes late phenotypic maturation. *Am J Physiol Regul Integr Comp Physiol* 2007;292:R1707-1716.
29. Bozza FA, Salluh JI, Japiassu AM, et al. Cytokine profiles as markers of disease severity in sepsis: a multiplex analysis. *Crit Care* 2007;11:R49.

30. Ramírez P, Ferrer M, Martí V, et al. Inflammatory biomarkers and prediction for intensive care unit admission in severe community-acquired pneumonia. *Crit Care Med* 2011;39:2211-2217.
31. Menéndez R, Martínez R, Reyes S, et al. Stability in community-acquired pneumonia: one step forward with markers? *Thorax* 2009;64:987-992.
32. Suwa T, Hogg JC, English D, Van Eeden SF. Interleukin-6 induces demargination of intravascular neutrophils and shortens their transit in marrow. *Am J Physiol Heart Circ Physiol* 2000;279:H2954-2960.
33. Drifte G, Dunn-Siegrist I, Tissières P, Pugin J. Innate immune functions of immature neutrophils in patients with sepsis and severe systemic inflammatory response syndrome. *Crit Care Med* 2013;41(3):820-832.
34. Drewry AM, Samra N, Skrupky LP, Fuller BM, Compton SM, Hotchkiss RS. Persistent lymphopenia after diagnosis of sepsis predicts mortality. *Shock* 2014;42(5):383-391.
35. Monneret G, Lepape A, Voirin N, et al. Persisting low monocyte human leukocyte antigen-DR expression predicts mortality in septic shock. *Intensive Care Med* 2006;32(8):1175-1183.
36. Döcke WD, Höflich C, Davis KA, et al. Monitoring temporary immunodepression by flow cytometric measurement of monocytic HLA-DR expression: a multicenter standardized study. *Clin Chem* 2005;51(12):2341-2347.
37. Boomer JS, To K, Chang KC, et al. Immunosuppression in patients who die of sepsis and multiple organ failure. *JAMA* 2011;306(23):2594-605.

Table 1: Population characteristics

Criteria	Sepsis (n=343)	Severe Sepsis (n=192)	Septic Shock (n=246)	p
Age*	67 ± 75	67 ± 67	65 ± 15	0.91
Gender, n (%):				
- Male	176 (51%)	117 (61%)	152 (62%)	0.02
BMI*	27 ± 7	27 ± 7	29 ± 9	0.14
Status, n (%):				
- Surgical	25 (7%)	16 (8%)	41 (17%)	<0.01
- Medical	318 (93%)	176 (92%)	205 (83%)	
Site of infection, n (%):				
- Pulmonary	109 (32%)	81 (42%)	80 (32%)	0.04
- Urinary	123 (36%)	49 (25%)	55 (22%)	<0.01
- Abdominal	43 (12%)	20 (10%)	53 (21%)	<0.01
- Skin and soft tissue	39 (11%)	13 (7%)	21 (8%)	0.19
- Other	29 (8%)	29 (15%)	37 (15%)	0.75
SOFA score*	2 ± 2	5 ± 3	9 ± 3	<0.01
SAPS II score*	25 ± 11	37 ± 13	51 ± 17	<0.01
Organ failures, n (%):				
- Respiratory	-	74 (38%)	146 (59%)	<0.01
- Kidney	-	42 (22%)	86 (35%)	<0.01
- Blood	-	52 (27%)	51 (21%)	0.14
- Metabolic	-	81 (42%)	145 (59%)	<0.01
- Hypotension	-	31 (16%)	43 (17%)	0.81
- Vasopressor support	-	-	246 (100%)	-
Clinical worsening at Day-2, n (%)	25 (7.2%)	21 (10.9%)	21 (9.5%)	
Dead at Day 7, n (%)	2 (0.6%)	8 (4.2%)	38 (15.0%)	<0.01
Dead at Day 28, n (%)	10 (2.9%)	14 (7.3%)	55 (22.3%)	<0.01

Abbreviations: BMI: Body Mass Index; SOFA: Sequential Organ Failure Assessment; SAPS

II: Simplified Acute Physiology Score II

Table 2: Leukocyte subset counts regarding sepsis severity on D0.

Leukocytes subsets	Control	Sepsis	Severe sepsis	Septic shock
Leukocytes, 10 ⁹ /L	6.59 ± 1.65	14.55 ± 6.13*	13.82 ± 7.04	15.87 ± 9.44*
Lymphocytes, 10 ⁹ /L	2.16 ± 0.78	1.35 ± 1.43*	0.89 ± 0.66*	0.93 ± 0.73
B-Lymphocytes, 10 ⁹ /L	0.2 ± 0.12	0.24 ± 1.19*	0.16 ± 0.32	0.18 ± 0.25
CD3 ^{pos} Lymphocytes, 10 ⁹ /L	1.53 ± 0.58	0.84 ± 0.58*	0.54 ± 0.41*	0.54 ± 0.5
Monocytes, %	8.29 ± 2.28	7.72 ± 3.89*	6.02 ± 3.73*	5.3 ± 4.01*
CD16 ^{pos} Monocytes, %	12.37 ± 4.32	20.39 ± 11.51*	22.54 ± 14.23	24.36 ± 14.37
Granulocytes, %	57.47 ± 9.24	79.3 ± 10.94*	83.98 ± 8.27*	84.06 ± 11.86
64 ^{pos} Granulocytes, %	1.49 ± 5.03	47.43 ± 36.23*	54.18 ± 37.41*	63.5 ± 33.95*
CD16 ^{dim} Granulocytes, %	2.97 ± 5.61	19.67 ± 26.53*	34.95 ± 34.04*	59.27 ± 34.68*

*p < 0.05 (control vs sepsis, sepsis vs severe sepsis, severe sepsis vs septic shock)

Table 3: Leukocyte subsets evaluated by flow cytometry and clinical deterioration on Day 2, odds ratio its 95% CI and p value associated to the univariate logistic regression, area under the curve and its 95% CI.

Leukocytes subsets	Improved / Stable	Deteriorated	OR	95% CI	<i>p</i>	AUC	95% CI
Leukocytes, 10 ⁹ /L	14.9 ± 7.4	14 ± 9.4	0.98	[0.95; 1.02]	0.37	0.55	[0.47;0.63]
Lymphocytes, 10 ⁹ /L	1.1 ± 1.1	0.9 ± 0.8	0.76	[0.51; 1.05]	0.15	0.57	[0.49;0.64]
B-Lymphocytes, 10 ⁹ /L	0.2 ± 0.9	0.1 ± 0.1	0.33	[0.04; 1.07]	0.25	0.57	[0.49;0.65]
CD3 ^{pos} Lymphocytes, 10 ⁹ /L	0.7 ± 0.5	0.5 ± 0.5	0.58	[0.32; 0.98]	0.06	0.59	[0.52;0.66]
Monocytes, %	6.7 ± 4.1	5.3 ± 3.1	0.91	[0.84; 0.97]	<0.01	0.59	[0.52;0.66]
CD16 ^{pos} Monocytes, %	22.3 ± 13.2	22.3 ± 14.7	1.00	[0.98; 1.02]	0.99	0.52	[0.44;0.59]
Granulocytes, %	81.9 ± 10.8	82.1 ± 13.2	1.00	[0.98; 1.03]	0.89	0.53	[0.46;0.61]
CD64 ^{pos} Granulocytes, %	53.6 ± 36.3	58.9 ± 36.6	1.00	[1.00; 1.01]	0.25	0.53	[0.46;0.61]
CD16 ^{dim} Granulocytes, %	35.1 ± 35.6	43.5 ± 35.2	1.01	[1.00; 1.01]	0.07	0.59	[0.53;0.66]

Abbreviations: OR: Odds Ratio; AUC: Area Under the Curve; CI: Confidence Interval

Table 4: Percentage of IG subsets in relation to the occurrence of new organ failure on Day 2, odds ratio its 95% CI and p value associated to the logistic regression, area under the curve and its 95% CI

Organ failure	Improvement/ Stabilization	Occurrence	OR	95% CI	p	AUC	95% CI
Respiratory failure	35.7 ± 35.4	48.6 ± 37.2	1.01	[1.00; 1.02]	0.01	0.6	[0.52;0.68]
Kidney failure	35.1 ± 35	61.7 ± 35.7	1.02	[1.01; 1.03]	<0.01	0.72	[0.64;0.79]
Thrombocytopenia	33.4 ± 34.4	67.2 ± 31.8	1.03	[1.02; 1.04]	<0.01	0.77	[0.72;0.82]
Hyperlactatemia	35.7 ± 35.2	59.8 ± 36.5	1.02	[1.01; 1.03]	<0.01	0.69	[0.6;0.78]
Hypotension	36.1 ± 35.5	57.9 ± 36	1.02	[1.01; 1.03]	<0.01	0.69	[0.6;0.77]
Vasopressor support	35.6 ± 35.4	53.6 ± 34.9	1.01	[1.00; 1.02]	<0.01	0.67	[0.6;0.73]

Abbreviations: IG: Immature Granulocytes; OR: Odds Ratio; AUC: Area Under the Curve; CI: Confidence Interval

Figure legends

Figure 1: Flow chart of the Septiflux2 trial

Figure 2: Box and whisker plot of leukocyte subsets in the control group compared to patients with confirmed sepsis, severe sepsis and septic shock

A: Comparison of CD16^{pos} monocytes, CD64^{pos} granulocytes, CD16^{dim} immature granulocytes percentages

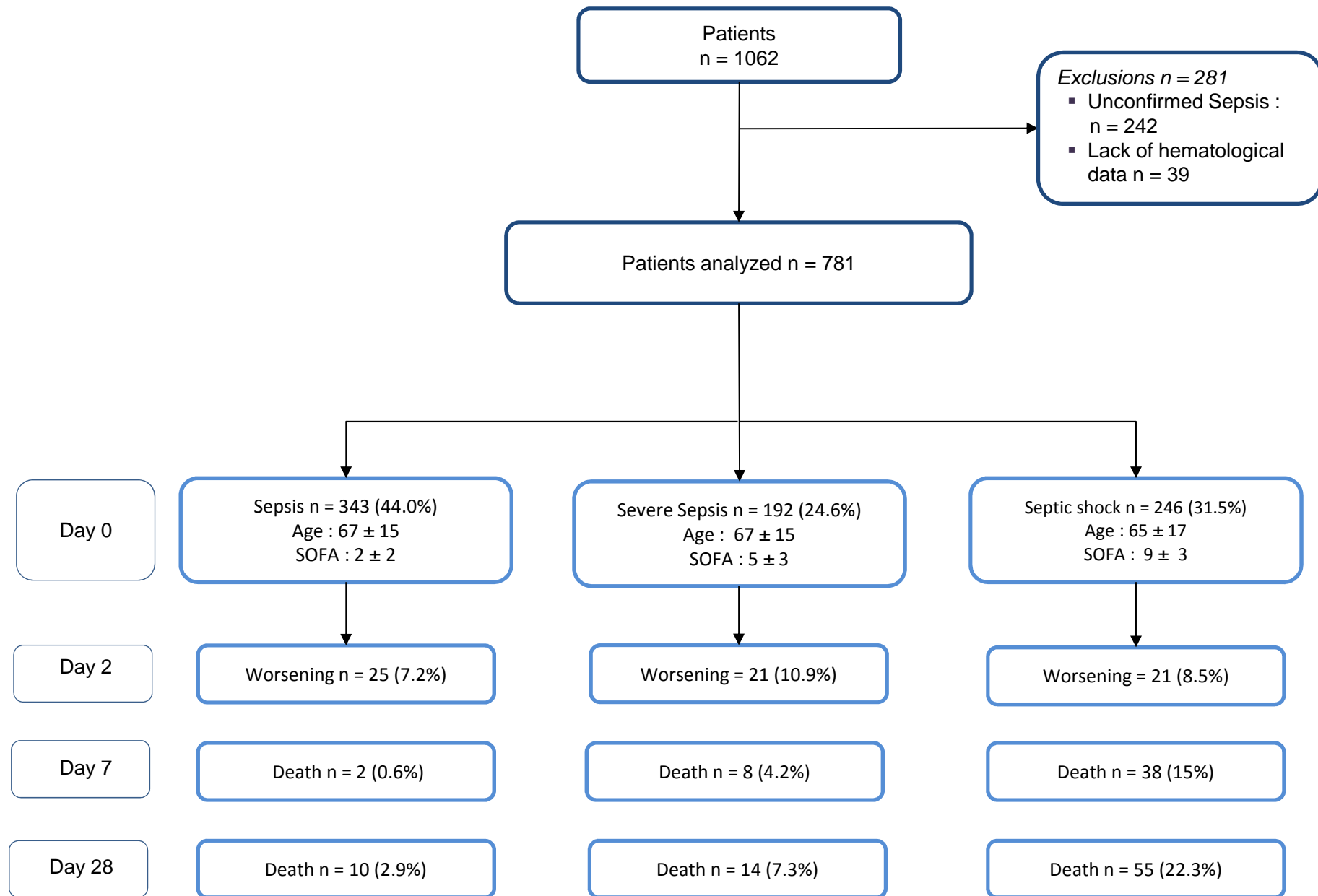
B: Comparison of CD3^{pos} lymphocyte and monocyte counts

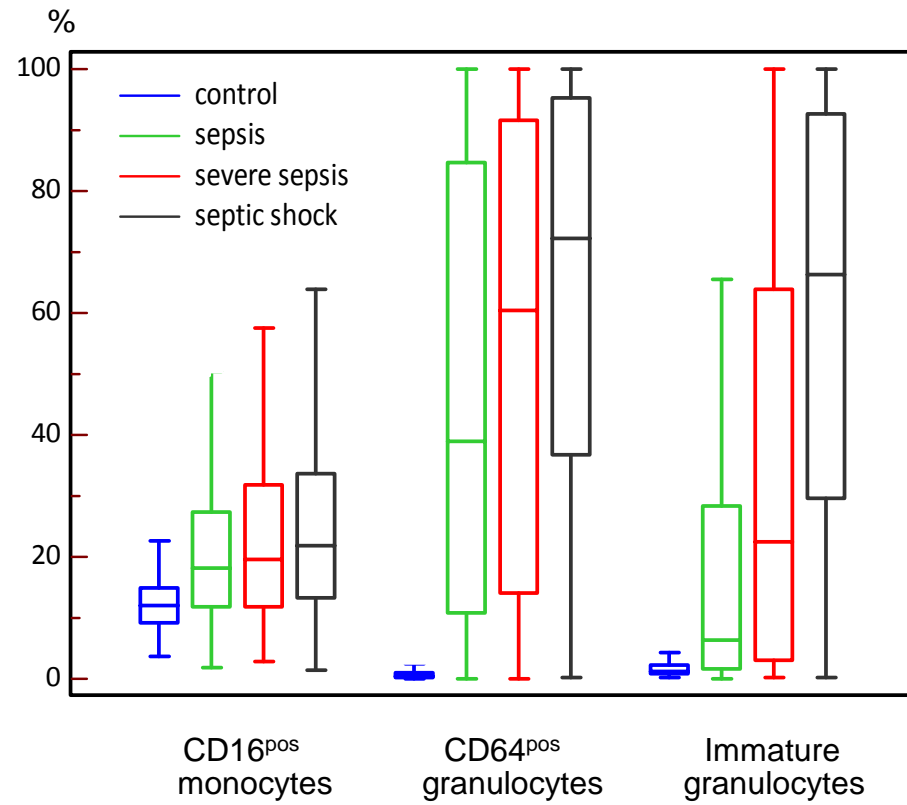
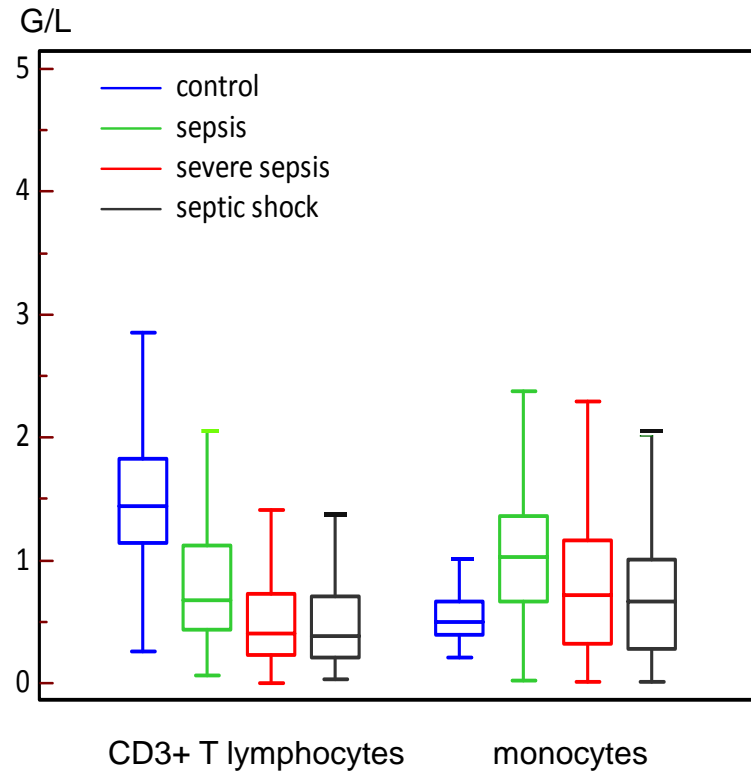
Figure 3: Examples of biparametric CD10/CD16 histograms in a typical out patient and patients with different sepsis severity. The red box corresponds to the gate in which CD16^{dim} IG were counted. The detailed gating strategy is given in the e-Figure 2.

Figure 4: Relationship between sepsis evolution and CD16^{dim} IG and CD3 lymphopenia

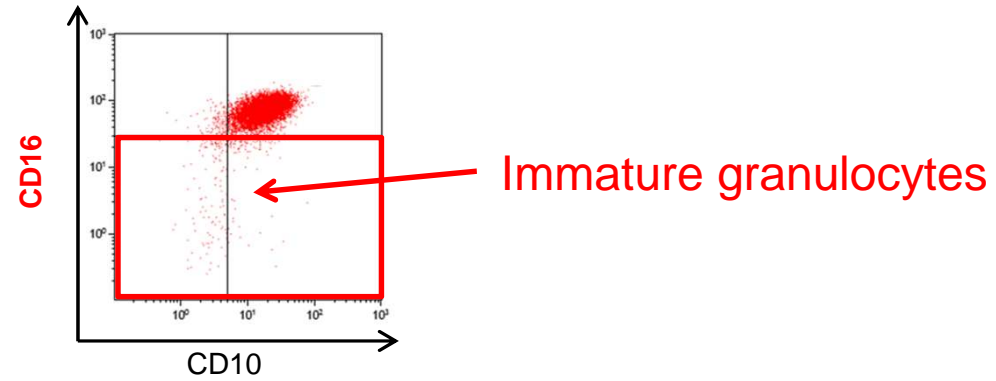
A: Percentage of patients with the parameter over the 30% threshold according to the vital status on Day 7.

B: Kaplan-Meier overall survival curves for patients according to the proportion of CD16^{dim} IG and CD3^{pos} lymphocyte counts.

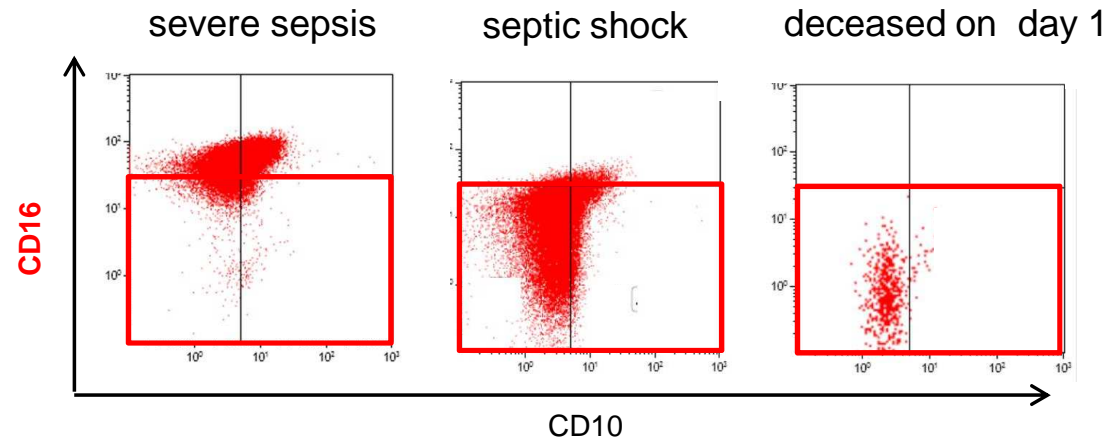


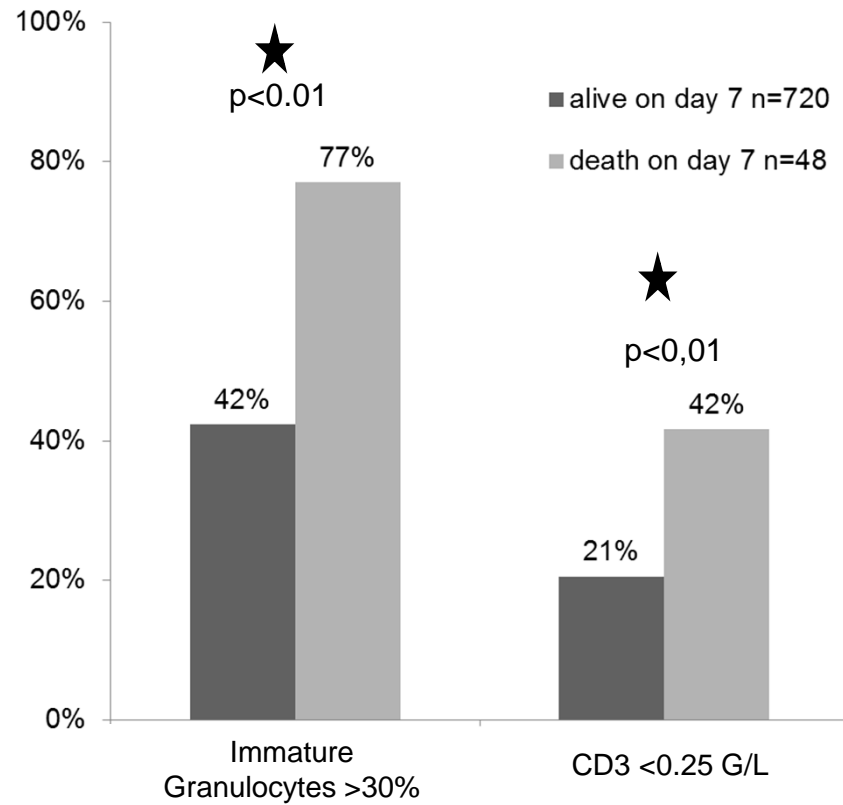
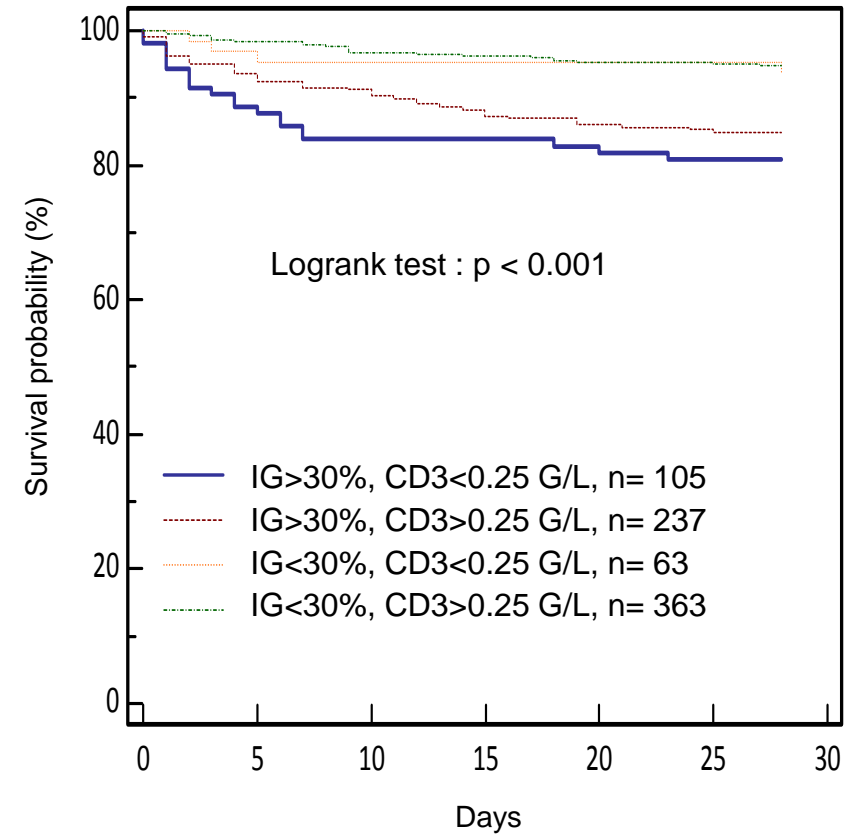
A**B**

Outpatient



Septic patients with low CD16 expression



A**B**

e-Table 1: Presumed deduced cell types from the gating characteristics of each cell studied

Variable	Gating characteristics
Lymphocytes 10 ⁹ /L	SSC ^{low} , CD45 ^{high}
B-lymphocytes, CD24+ 10 ⁹ /L	SSC ^{low} , CD45 ^{high} , CD24+
T-lymphocytes, CD3+ 10 ⁹ /L	SSC ^{low} , CD45 ^{high} , CD3+
Granulocytes 10 ⁹ /L :	SSC ^{high} , CD45 ^{int} , CD14-, CD3-, CD24-
- CD64 ^{pos} %*	SSC ^{high} , CD45 ^{int} , CD14-, CD3-, CD24-, CD64+
- CD10 ^{dim} and not CD16 ^{dim} % *	SSC ^{high} , CD45 ^{int} , CD14-, CD3-, CD24-, CD10 ^{dim-} , not CD16 ^{dim}
- not CD10 ^{dim} and CD16 ^{dim} % *	SSC ^{high} , CD45 ^{int} , CD14-, CD3-, CD24-, not CD10 ^{dim-} , CD16 ^{dim}
- CD10 ^{dim} and CD16 ^{dim} % *	SSC ^{high} , CD45 ^{int} , CD14-, CD3-, CD24-, CD10 ^{dim}
Monocytes, 10 ⁹ /L	SSC ^{int} , CD45 ^{high} , CD14+
- increased CD16 expression, %*	SSC ^{int} , CD45 ^{high} , CD14+, CD16+

*The threshold has been established from a control group

e-Table 2: Antibodies used for flow cytometry

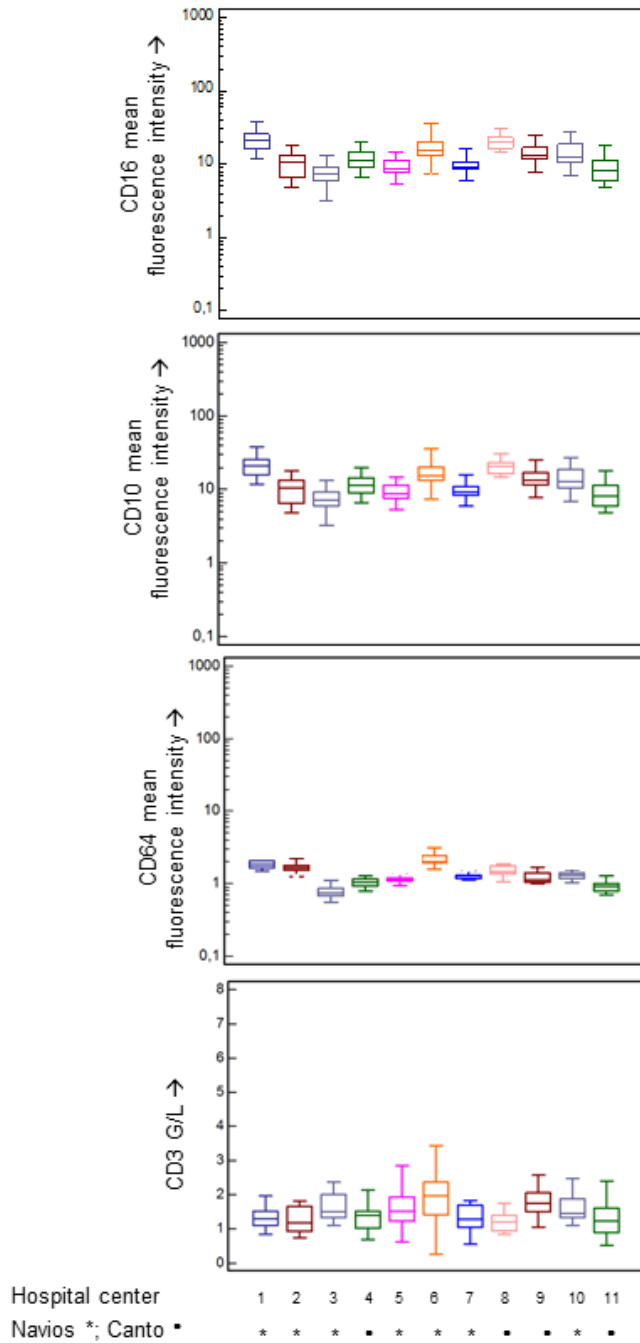
Antibodies	Manufacturer
Fluoresceine Iso Thio Cyanate (FITC) conjugated CD64 mAb (CD64-FITC, clone 22)	Immunotech (Marseille, France).
phycoerythrin (PE) conjugated CD10 mAb (CD10-PE, clone ALB1)	
PE-cyanine 5,5 (PC5,5) conjugated CD14 mAb (CD14-PC5,5, clone RMO52)	
PE-cyanine 7 (PC7) conjugated CD3 mAb (CD3-PC7, clone UCHT1)	
Allophycocyanin (APC) conjugated CD24 mAb (CD24-APC, clone ALB9)	
APC Alexia Fluor 750 (APC-A750) conjugated CD11b mAb (CD11b-APC-A750, clone Bear 1)	
Pacific blue (PB) conjugated CD16 mAb (CD16-PB, clone 3G8)	
Krome Orange (KO) conjugated CD45 mAb (CD45-KO, clone J.33)	



e-Table 3: Percentage of CD64^{pos} granulocytes regarding the occurrence of new organ failure on Day 2, odds ratio and p value associated to the logistic regression, area under the curve and its 95% CI

	Improvement/ Stabilization	New Organ Failure	OR	p	AUC	95% CI
Respiratory failure	58.5	68	1	0.43	0.53	[0.44; 0.61]
Renal failure	57.1	81.9	1.01	<0.01	0.60	[0.52; 0.68]
Thrombopenia	58.1	73.7	1.10	0.05	0.57	[0.5; 0.64]
Hyperlactatemia	57.2	83.8	1.02	<0.01	0.63	[0.54; 0.72]
Hypotension	58.3	68	1.01	0.13	0.58	[0.47; 0.68]
Vasopressor support	57.1	81.2	1.01	<0.01	0.6	[0.52; 0.68]

e-Figure 1: Box and whisker plot of CD16, CD10, CD64 mean fluorescence intensity and CD3 count subsets in the control group from the eleven centers and depends of flow cytometers used.



e-Figure 2: Gating strategy to identify leukocyte subsets in a representative case of outpatient used as control

A: Cells were selected on morphological parameters (FS versus SS)

B: Hematopoietic cells were defined as CD45^{pos} cells.

C, D: Monocytes were roughly selected as CD14^{pos} cells and then refined as CD45^{pos}/SS intermediate cells.

E: Monocytes were separated into two subtypes (i) classical CD14^{pos}/CD16^{neg} (classical and MO1), (ii) CD14^{pos}/CD16^{pos} (intermediate or MO2) and CD14^{low}/CD16^{pos} (non-classical or MO3).

F: CD3^{pos} T-lymphocytes were gated.

G: Lymphocytes CD45^{high}/SS^{low} were separated on cells after exclusion of monocytes

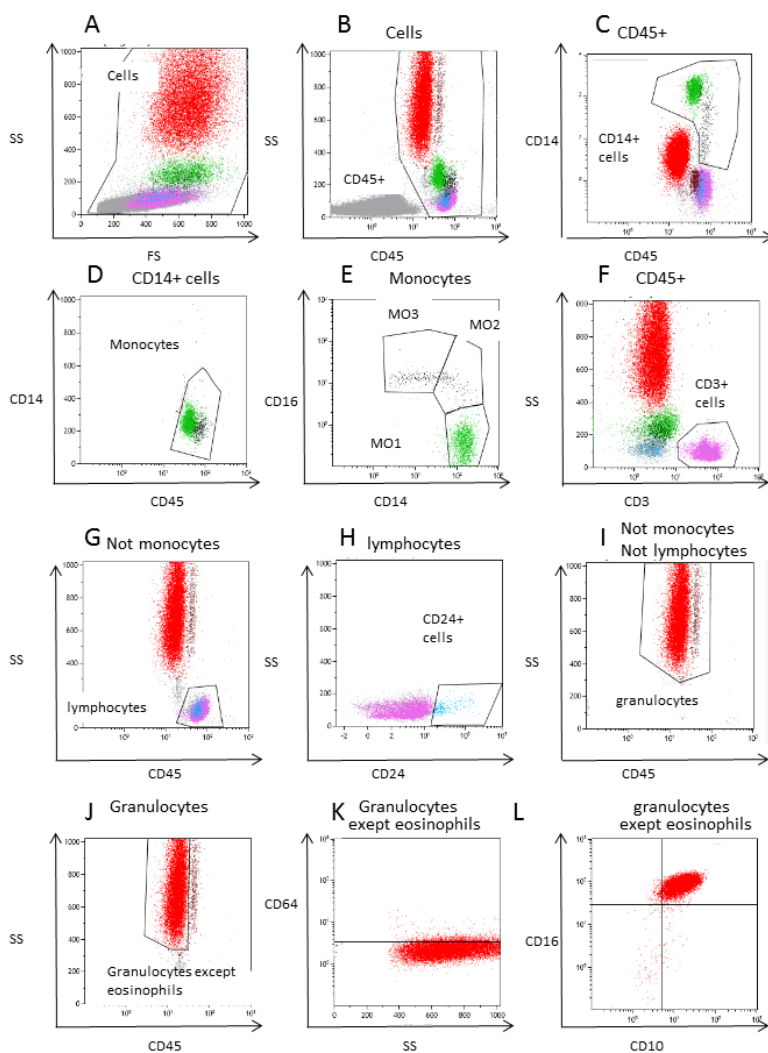
H: CD24^{pos} B-lymphocytes were gated.

I: Granulocytes were gated after exclusion of monocytes and lymphocytes.

J: Exclusion of CD45^{high} eosinophils.

K, L: CD10, CD16 and CD64 expression on granulocytes without eosinophils.

Thresholds were determined by comparison with 20 control subjects in each center.



e-Figure 3: Kaplan-Meier overall survival curves for patients according to the proportion of CD16^{dim} IG and CD3^{pos} lymphocyte count including 95% IC in graph

